



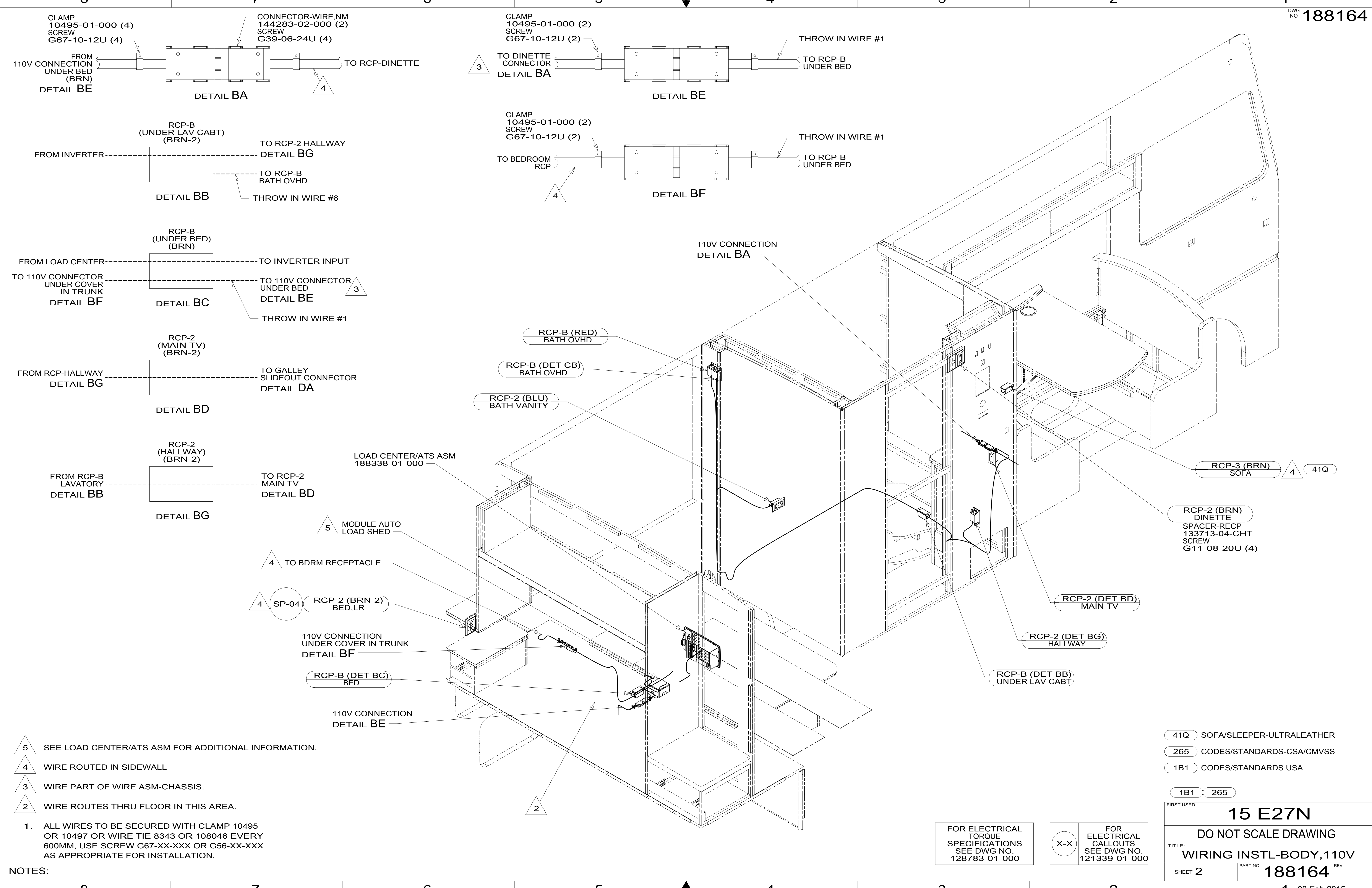
DANGER

Danger of electrical shock, burns or death. Always remove all power sources before attempting any repair, service or diagnostic work. Power can be present from shore power, generator, inverter or battery. All power sources must be disabled and secured before performing any service.



CAUTION

If you lack the skills, tools or equipment to perform diagnostic or repair work leave such work to an authorized Winnebago Industries dealer or other qualified shop.



- NOTES:
- 5 SEE LOAD CENTER/ATS ASM FOR ADDITIONAL INFORMATION.
 - 4 WIRE ROUTED IN SIDEWALL
 - 3 WIRE PART OF WIRE ASM-CHASSIS.
 - 2 WIRE ROUTES THRU FLOOR IN THIS AREA.
1. ALL WIRES TO BE SECURED WITH CLAMP 10495 OR 10497 OR WIRE TIE 8343 OR 108046 EVERY 600MM, USE SCREW G67-XX-XXX OR G56-XX-XXX AS APPROPRIATE FOR INSTALLATION.

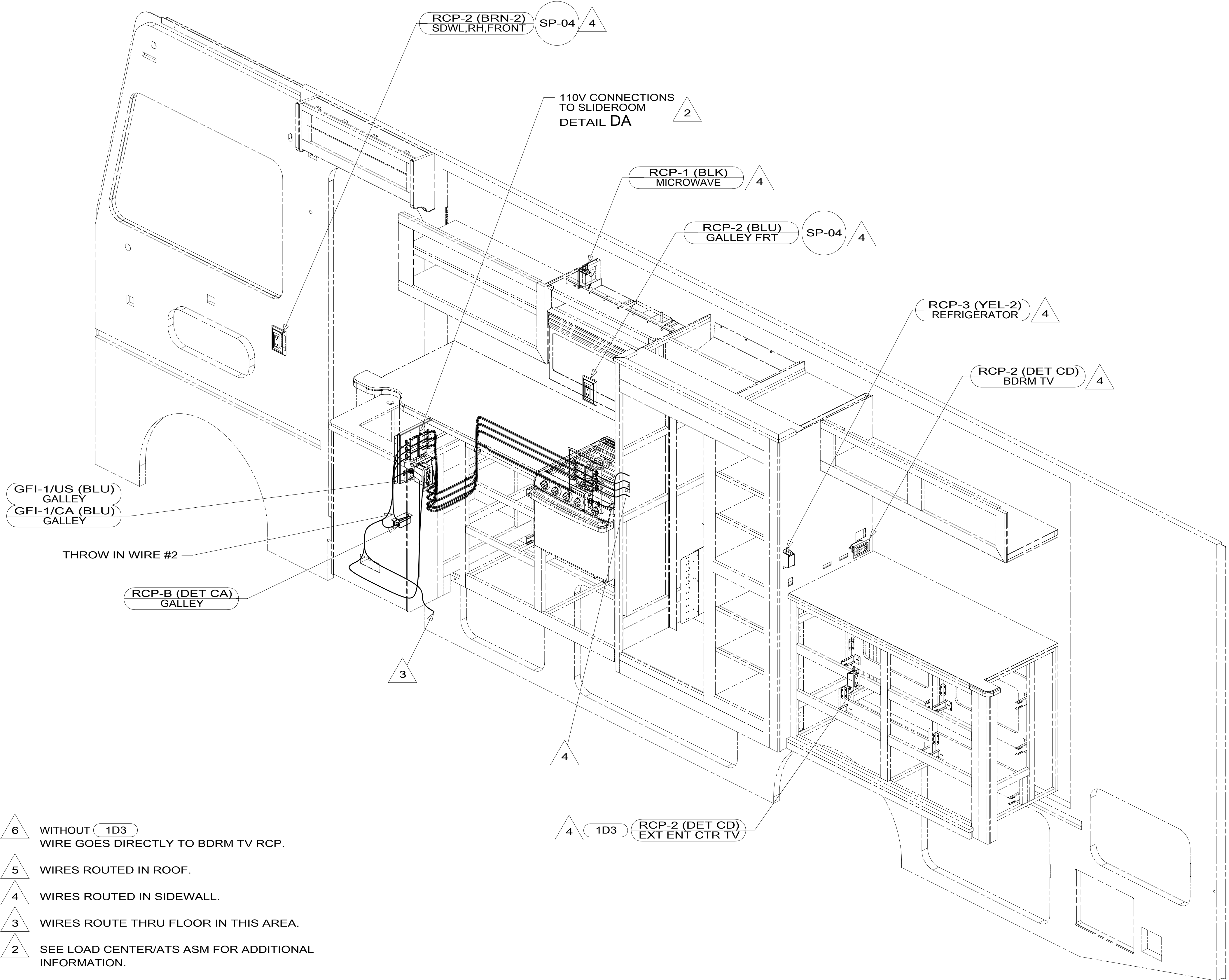
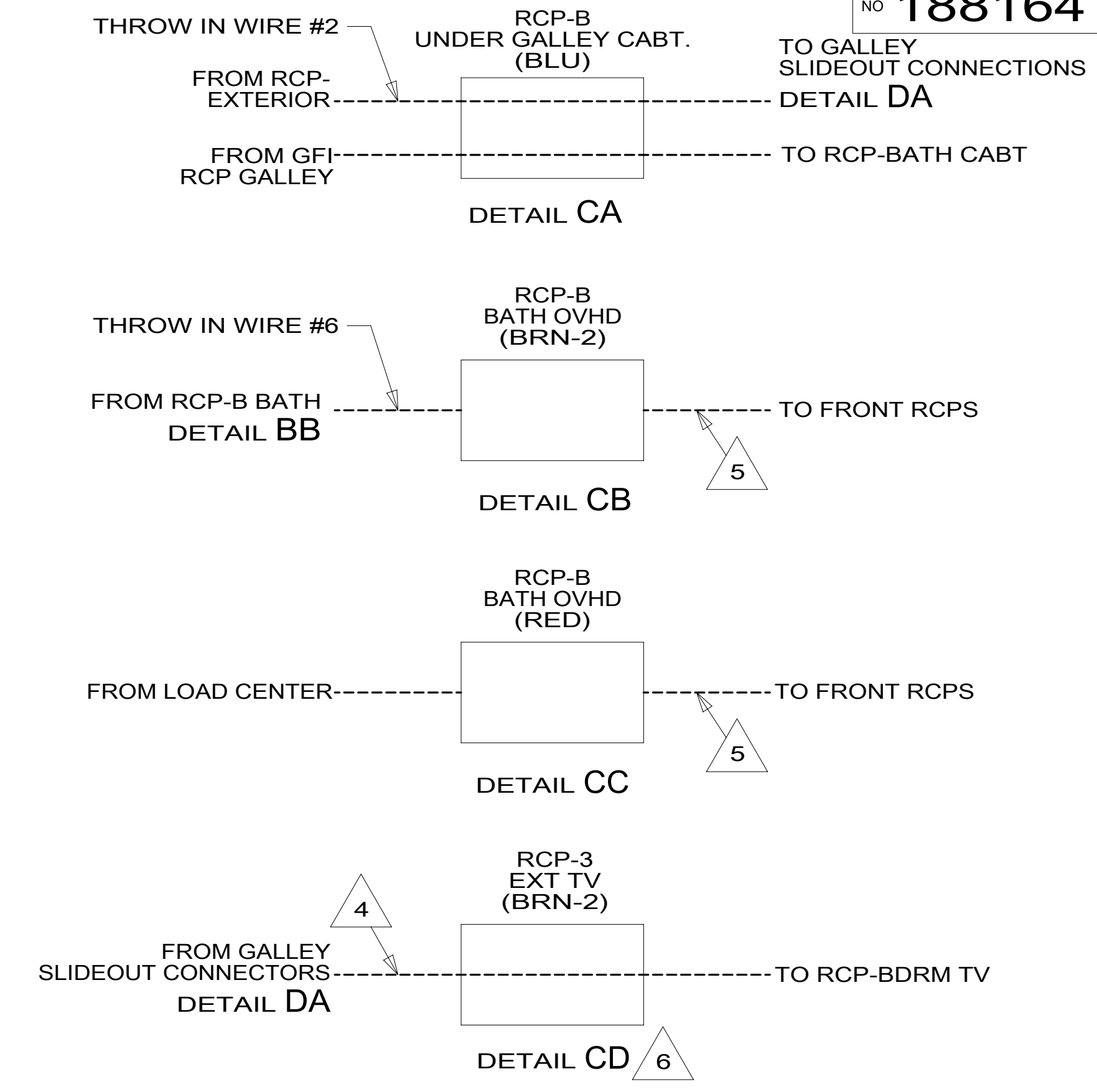
FOR ELECTRICAL TORQUE SPECIFICATIONS SEE DWG NO. 128783-01-000

FOR ELECTRICAL CALLOUTS SEE DWG NO. 121339-01-000

- 41Q SOFA/SLEEPER-ULTRALEATHER
- 265 CODES/STANDARDS-CSA/CMVSS
- 1B1 CODES/STANDARDS USA

FIRST USED	
15 E27N	
DO NOT SCALE DRAWING	
TITLE: WIRING INSTL-BODY, 110V	
SHEET 2	PART NO 188164 REV
1 03-Feb-2015	

*188164 *A



- 6 WITHOUT 1D3 WIRE GOES DIRECTLY TO BDRM TV RCP.
- 5 WIRES ROUTED IN ROOF.
- 4 WIRES ROUTED IN SIDEWALL.
- 3 WIRES ROUTE THRU FLOOR IN THIS AREA.
- 2 SEE LOAD CENTER/ATS ASM FOR ADDITIONAL INFORMATION.

1. ALL WIRES TO BE SECURED WITH CLAMP 10495 OR 10497 OR WIRE TIE 8343 OR 108046 EVERY 600MM, USE SCREW G67-XX-XXX OR G56-XX-XXX AS APPROPRIATE FOR INSTALLATION.

NOTES:

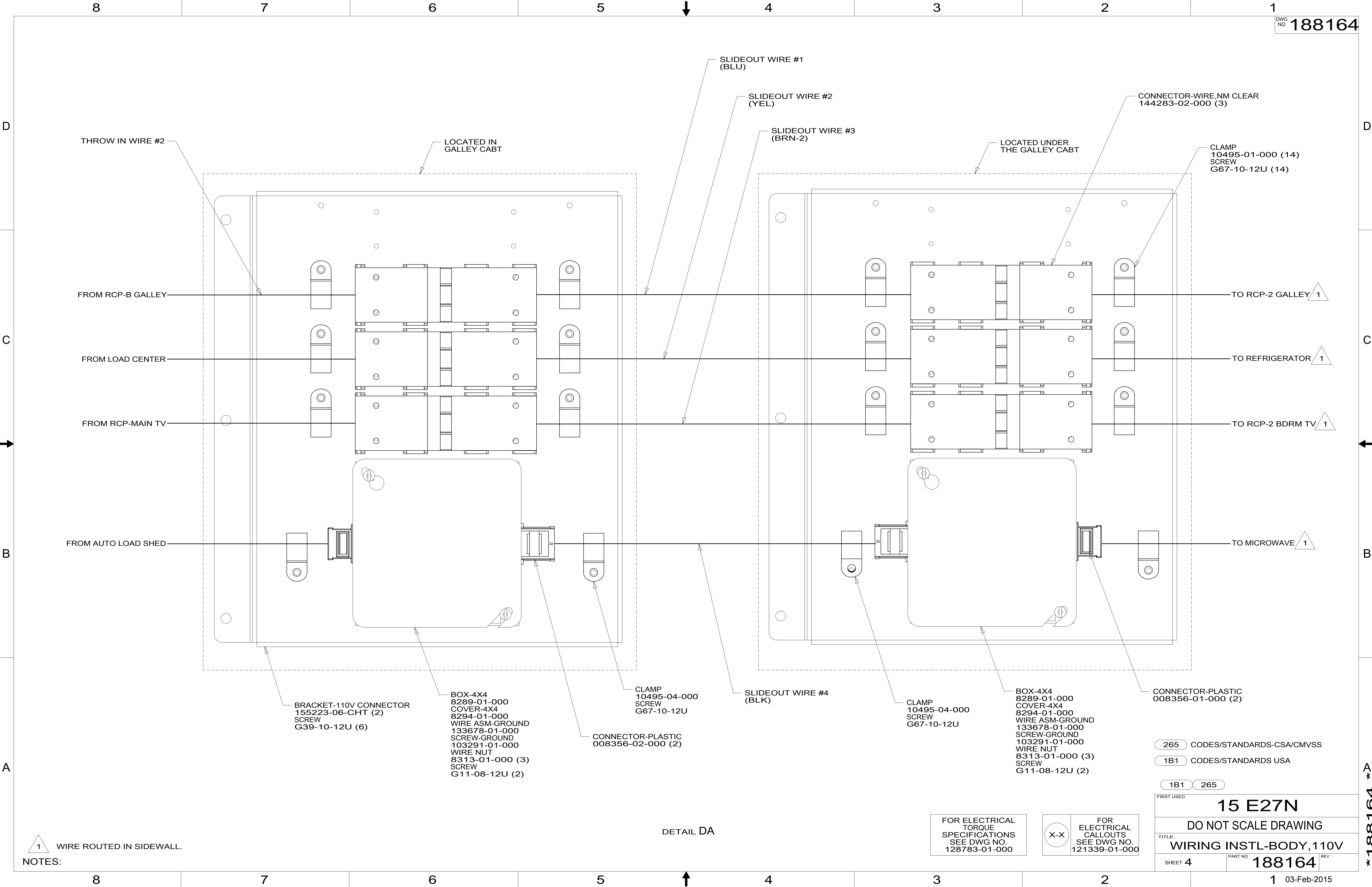
- 1D3 ENTERTAIN CENTR/EXT TV-DVD
- 265 CODES/STANDARDS-CSA/CMVSS
- 1B1 CODES/STANDARDS USA

FIRST USED	
15 E27N	
DO NOT SCALE DRAWING	
TITLE: WIRING INSTL-BODY, 110V	
SHEET 3	PART NO. 188164 REV

FOR ELECTRICAL TORQUE SPECIFICATIONS SEE DWG NO. 128783-01-000

FOR ELECTRICAL CALLOUTS SEE DWG NO. 121339-01-000

*188164 *A



THROW IN WIRE #2

LOCATED IN GALLEY CABT

SLIDEOUT WIRE #1 (BLU)

SLIDEOUT WIRE #2 (YEL)

SLIDEOUT WIRE #3 (BRN-2)

LOCATED UNDER THE GALLEY CABT

CONNECTOR-WIRE,NM CLEAR 144283-02-000 (3)

CLAMP 10495-01-000 (14)
SCREW G67-10-12U (14)

FROM RCP-B GALLEY

TO RCP-2 GALLEY 1

FROM LOAD CENTER

TO REFRIGERATOR 1

FROM RCP-MAIN TV

TO RCP-2 BDRM TV 1

FROM AUTO LOAD SHED

TO MICROWAVE 1

BRACKET-110V CONNECTOR 155223-06-CHT (2)
SCREW G39-10-12U (6)

BOX-4X4 8289-01-000
COVER-4X4 8294-01-000
WIRE ASM-GROUND 133678-01-000
SCREW-GROUND 103291-01-000
WIRE NUT 8313-01-000 (3)
SCREW G11-08-12U (2)

CLAMP 10495-04-000
SCREW G67-10-12U

CONNECTOR-PLASTIC 008356-02-000 (2)

SLIDEOUT WIRE #4 (BLK)

CLAMP 10495-04-000
SCREW G67-10-12U

BOX-4X4 8289-01-000
COVER-4X4 8294-01-000
WIRE ASM-GROUND 133678-01-000
SCREW-GROUND 103291-01-000
WIRE NUT 8313-01-000 (3)
SCREW G11-08-12U (2)

CONNECTOR-PLASTIC 008356-01-000 (2)

265 CODES/STANDARDS-CSA/CMVSS

1B1 CODES/STANDARDS USA

1B1 265

FIRST USED 15 E27N

DO NOT SCALE DRAWING

TITLE: WIRING INSTL-BODY, 110V

SHEET 4 PART NO 188164 REV

1 03-Feb-2015

FOR ELECTRICAL TORQUE SPECIFICATIONS SEE DWG NO. 128783-01-000

FOR ELECTRICAL CALLOUTS SEE DWG NO. 121339-01-000

DETAIL DA

1 WIRE ROUTED IN SIDEWALL.
NOTES:

*188164 *A

