



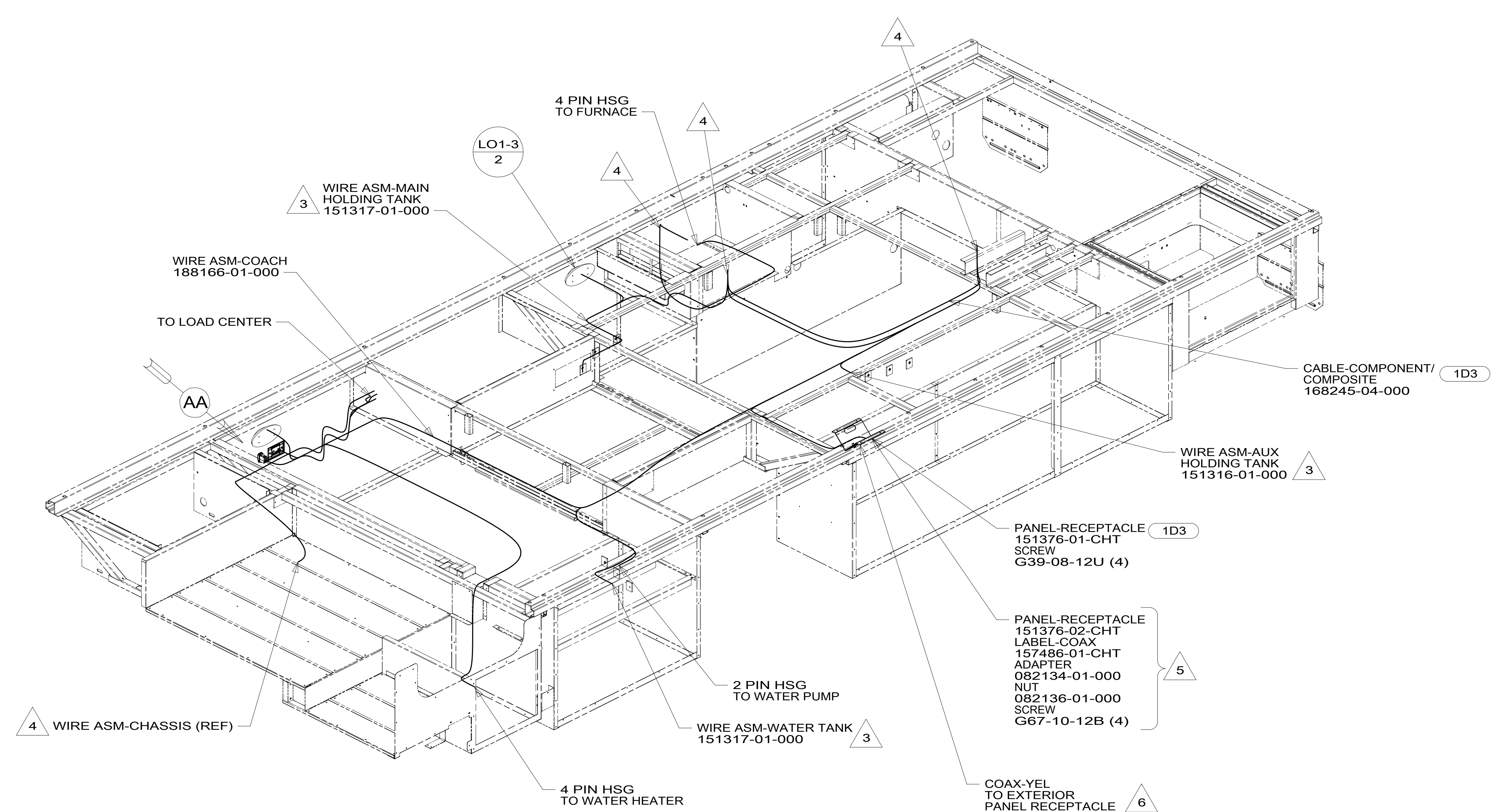
DANGER

Danger of electrical shock, burns or death. Always remove all power sources before attempting any repair, service or diagnostic work. Power can be present from shore power, generator, inverter or battery. All power sources must be disabled and secured before performing any service.



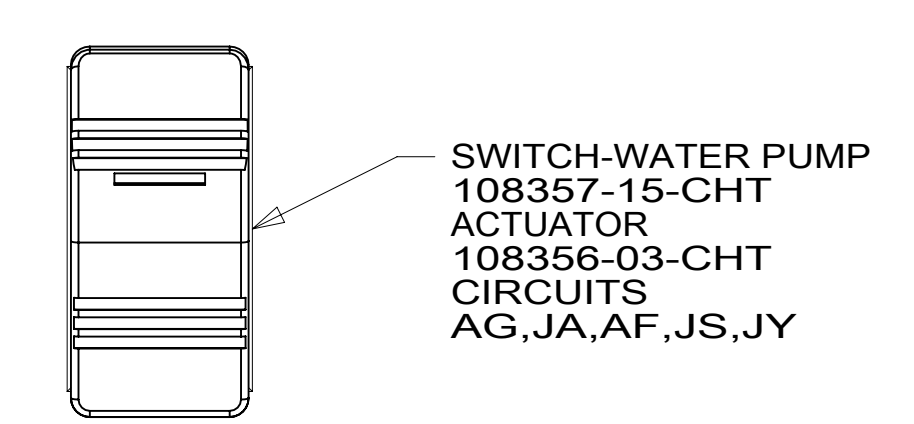
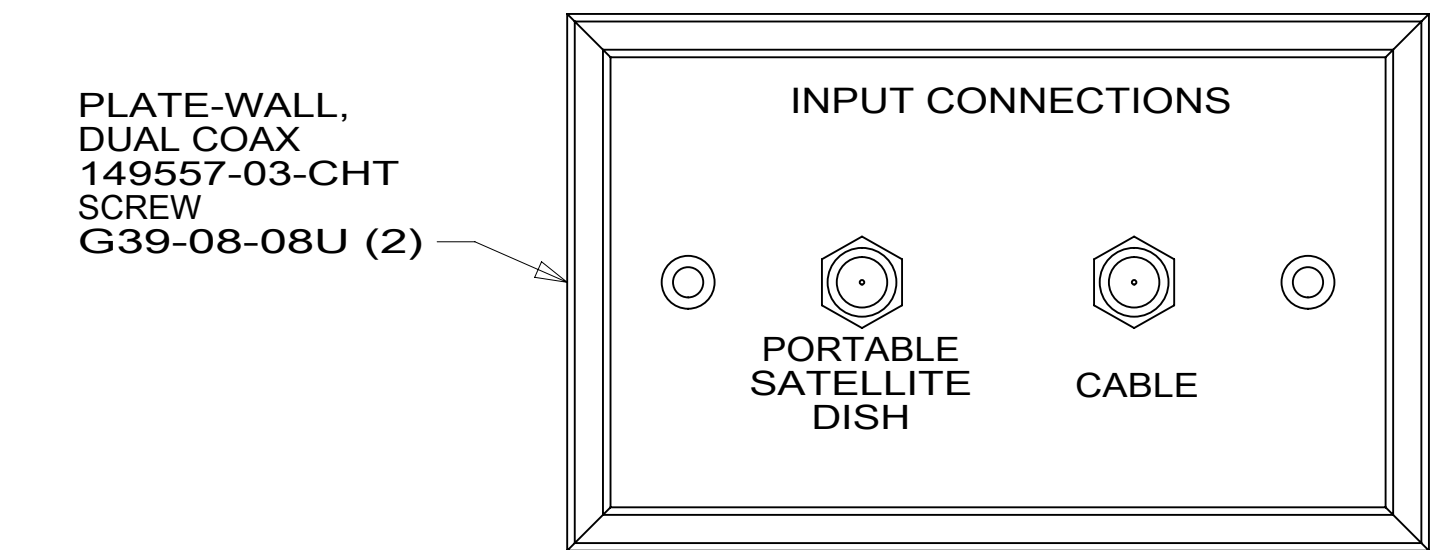
CAUTION

If you lack the skills, tools or equipment to perform diagnostic or repair work leave such work to an authorized Winnebago Industries dealer or other qualified shop.



- 1D3 ENTERTAIN CENTR/EXT TV-DVD
- 265 CODES/STANDARDS-CSA/CMVSS
- 1B1 CODES/STANDARDS USA
- 1B1 265

- 6 WITH 1D3 ROUTE YELLOW COAX TO SLIDEOUT WITH WIRE ASM-COACH.
 - 5 NOT USED WITH 1D3
 - 4 WIRE PASSES THROUGH FLOOR IN THIS AREA.
 - 3 PLACE CROSS LOCATOR ON SENSORS OVER DIMPLES ON TANK.
2. ROUTE TANK SENSOR WIRES SO THEY DO NOT PASS OVER SENSORS. USE WIRE TIE MOUNT 155366-01-000 AND WIRE TIE 8343-01-000 AS NEEDED. TANK SURFACE MUST BE CLEANED USING ISOPROPYL ALCOHOL AND PRIMED WITH PRIMER 94.
 1. AT MINIMUM ALL WIRES TO BE SUPPORTED AND SECURED PER CODE REQUIREMENTS. USE CLAMP 10495 OR 10497 OR WIRE TIE 8343 OR 108046 AND SCREW G67-XX-XXX OR G56-XX-XXX AS APPROPRIATE FOR INSTALLATION.



FOR ELECTRICAL TORQUE SPECIFICATIONS SEE DWG NO. 128783-01-000

FOR ELECTRICAL CALLOUTS SEE DWG NO. 121339-01-000

WINNEBAGO COPYRIGHT 2014 WINNEBAGO INDUSTRIES, INC.

| | |
|------|-----------------------------------|
| DTR | ORIG. DATE |
| CHKR | ALL DIMENSIONS ARE IN MILLIMETERS |
| P.E. | FIRST USED |
| M.E. | 15 E27N |
| DSNR | |

UNSPECIFIED TOLERANCES ARE:
 WHOLE DIM (X) : 3
 ONE-PLACE (X.X) : 1.5
 TWO-PLACE (X.XX) : 0.50
 ANGLE : 1°

THIRD ANGLE PROJECTION

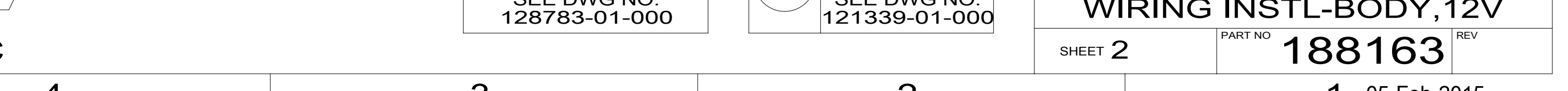
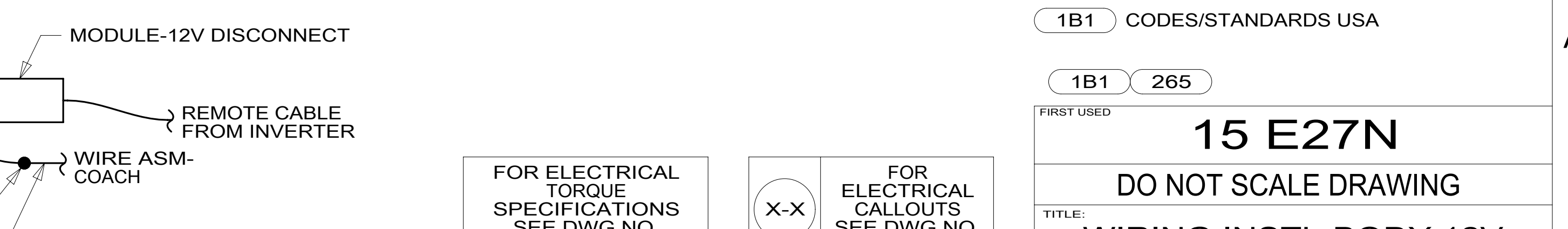
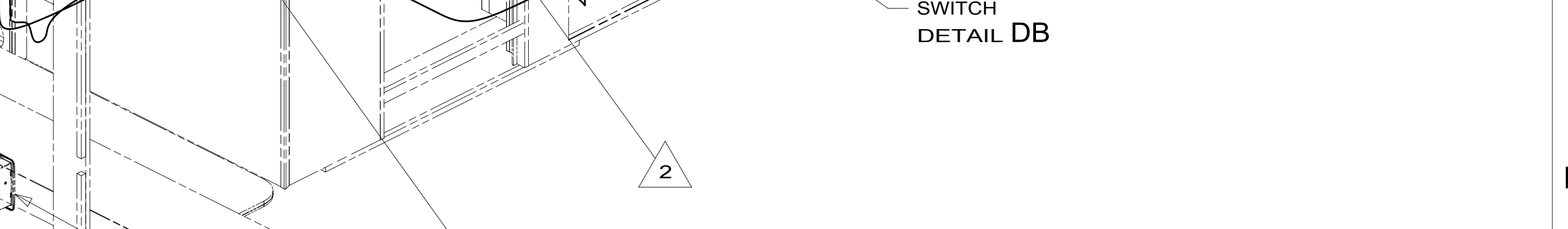
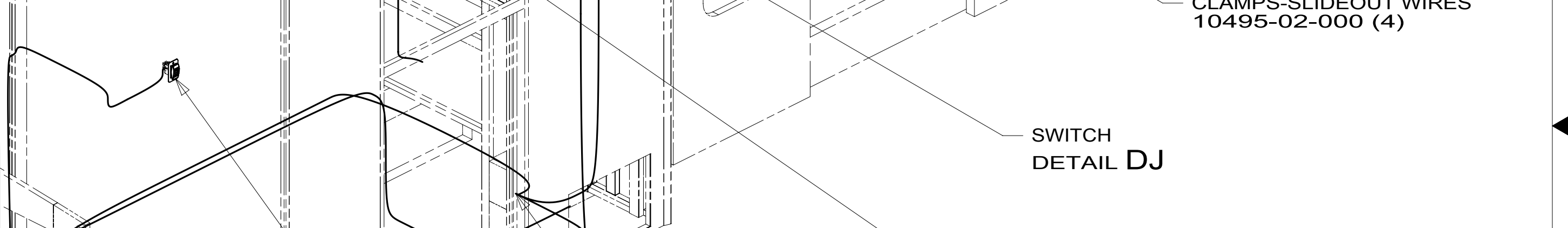
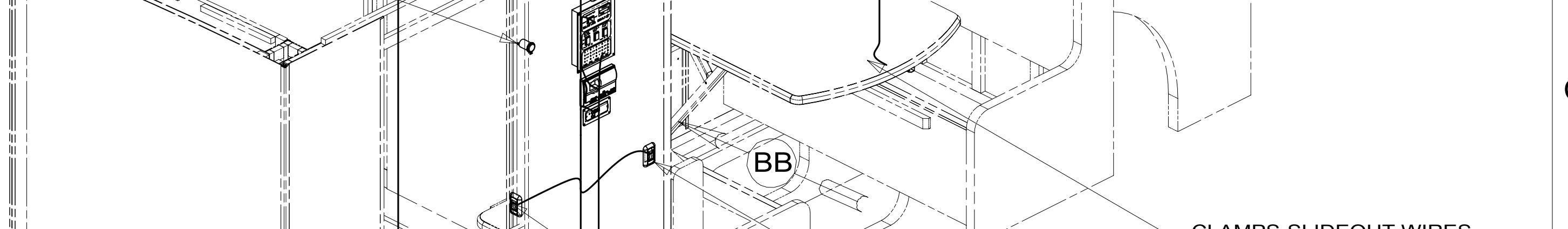
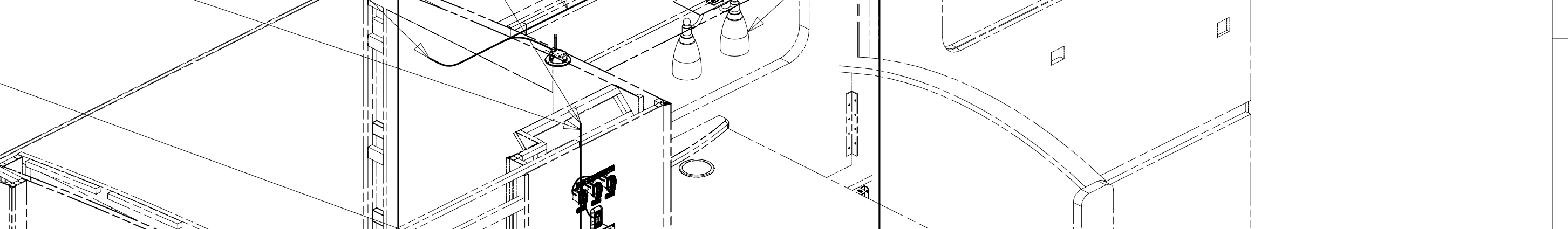
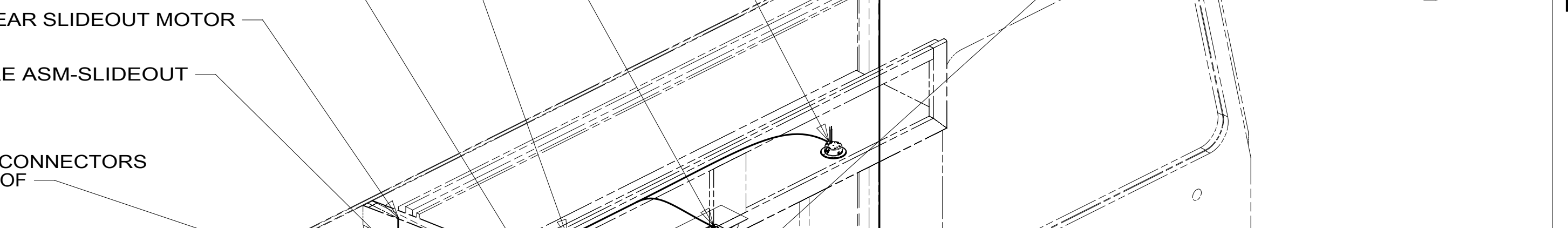
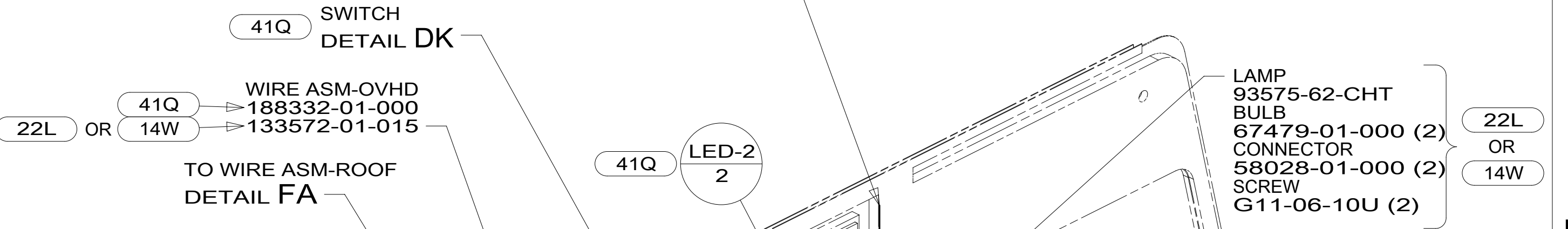
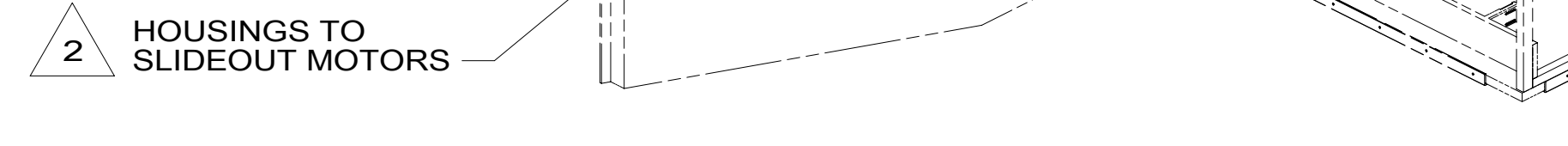
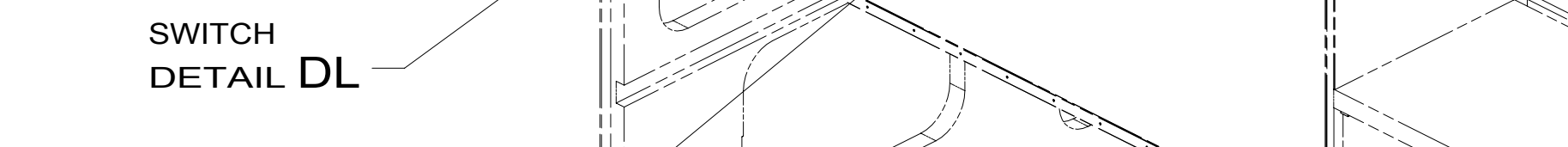
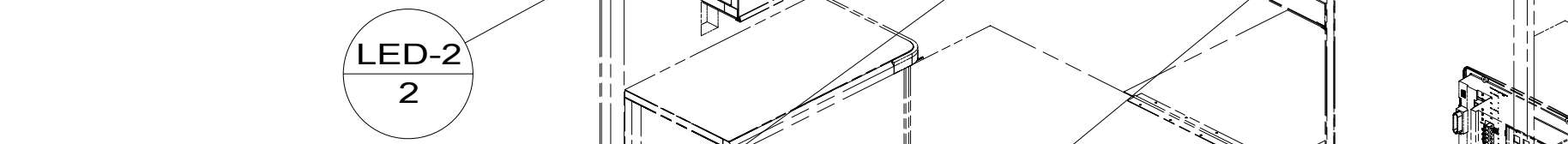
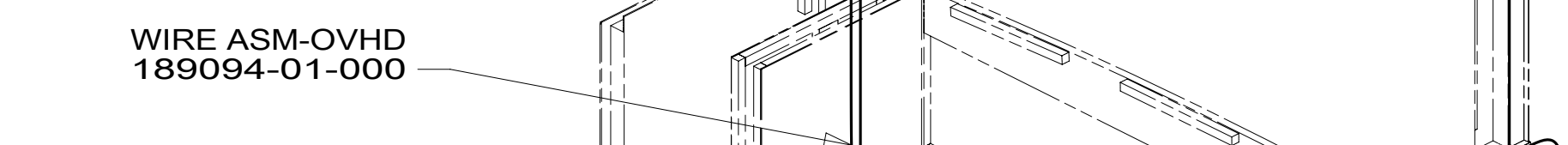
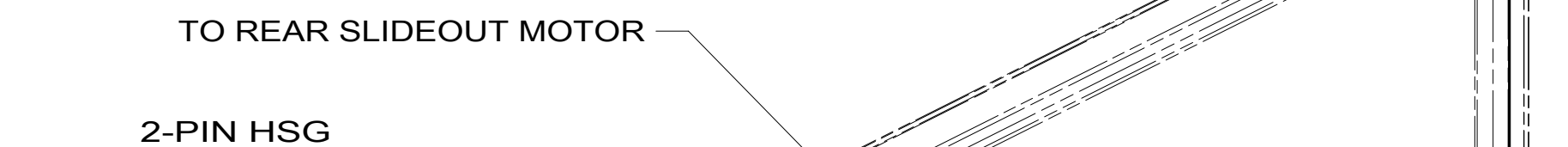
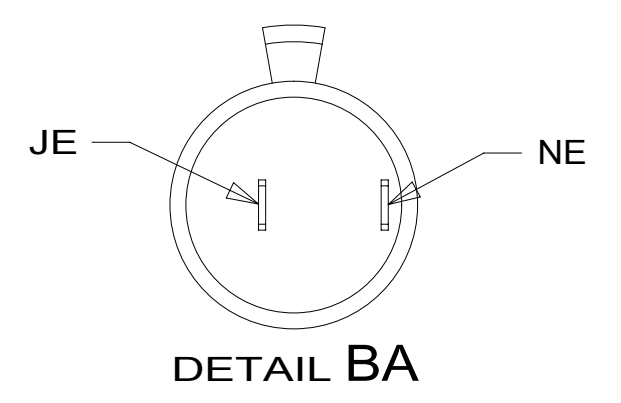
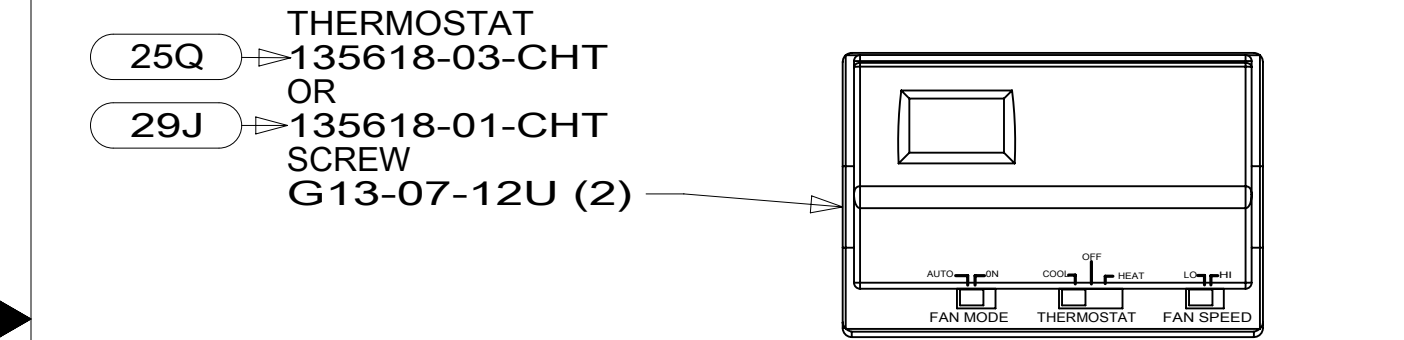
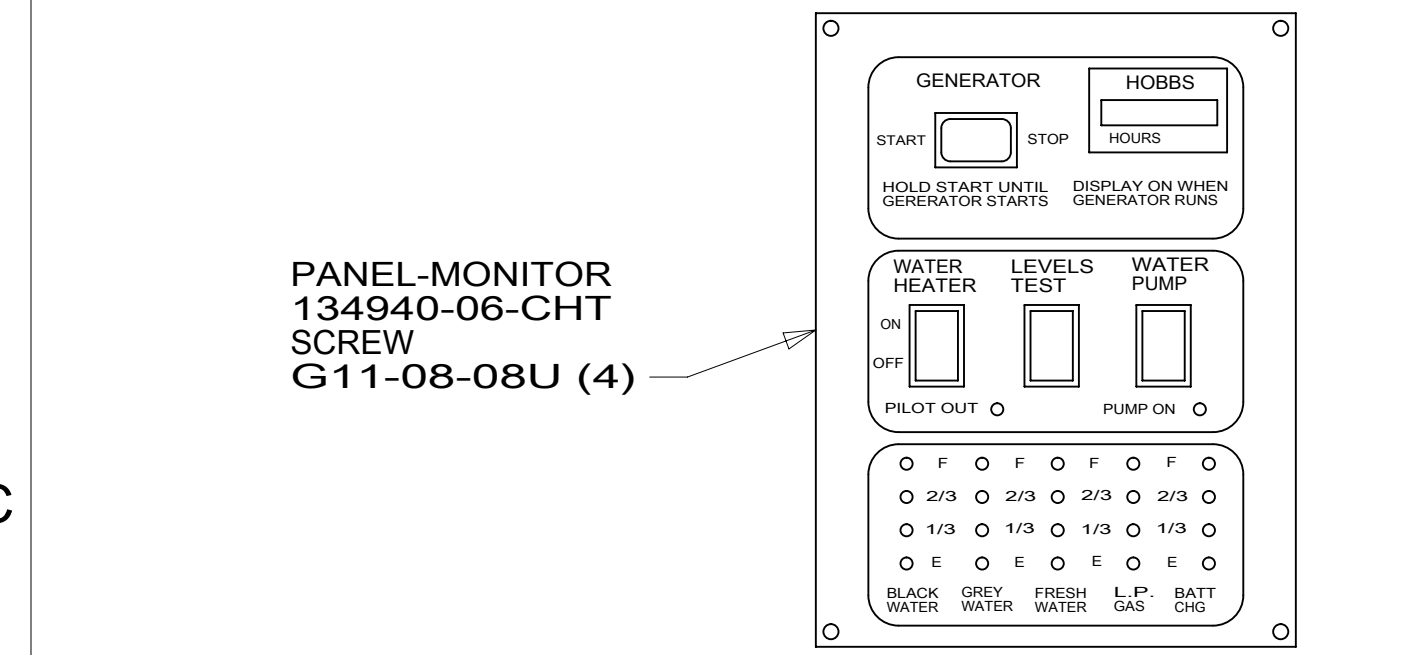
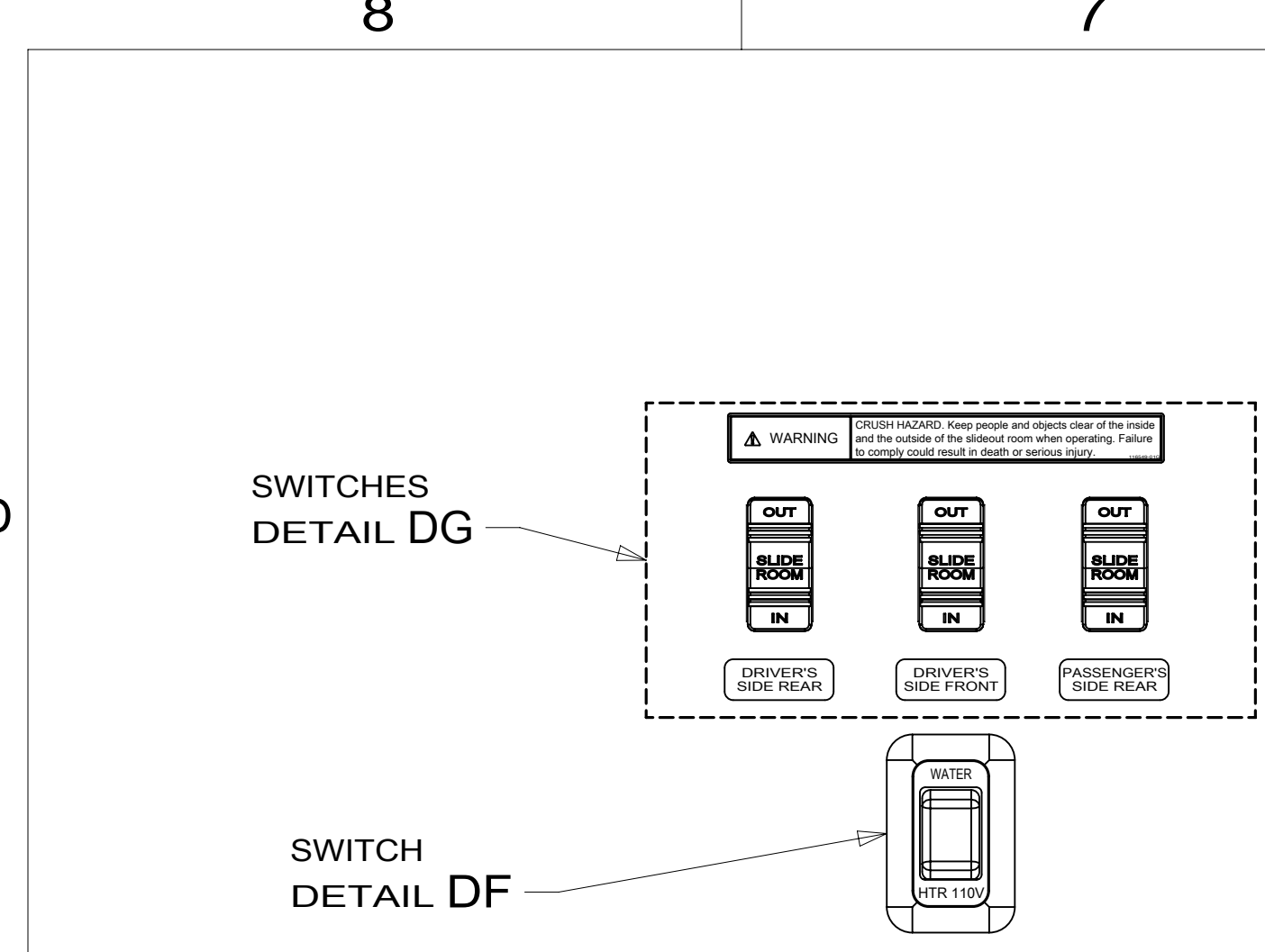
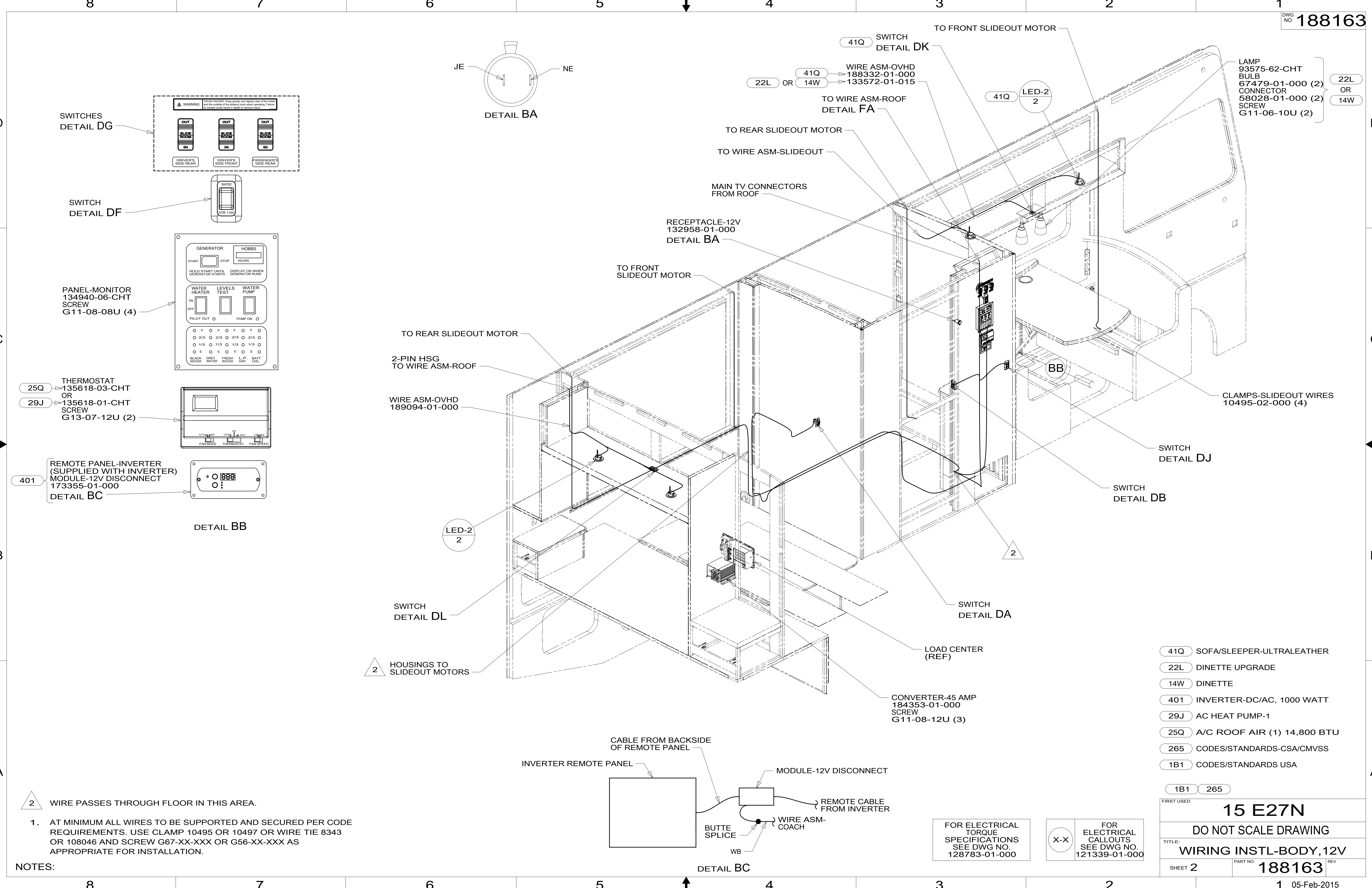
DO NOT SCALE DRAWING REFER TO ES0018 FOR FASTENER TIGHTENING GUIDELINES

TITLE: WIRING INSTL-BODY, 12V

SHEET 1 OF 6 PART NO 188163 REV

REF: 1 05-Feb-2015

188163



NOTES:
 1. AT MINIMUM ALL WIRES TO BE SUPPORTED AND SECURED PER CODE REQUIREMENTS. USE CLAMP 10495 OR 10497 OR WIRE TIE 8343 OR 108046 AND SCREW G67-XX-XXX OR G56-XX-XXX AS APPROPRIATE FOR INSTALLATION.

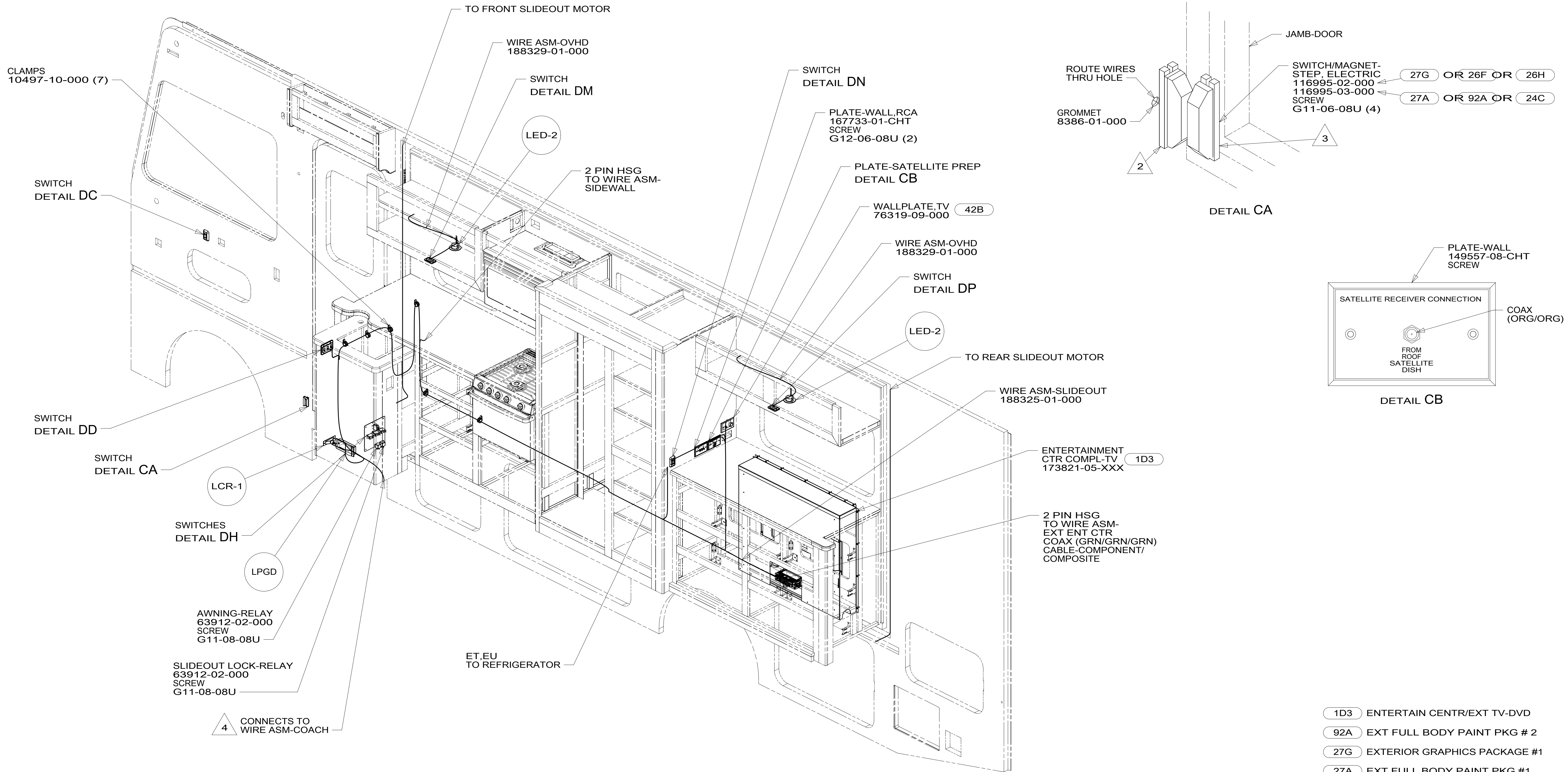
- 41Q SOFA/SLEEPER-ULTRALEATHER
- 22L DINETTE UPGRADE
- 14W DINETTE
- 401 INVERTER-DC/AC, 1000 WATT
- 29J AC HEAT PUMP-1
- 25Q A/C ROOF AIR (1) 14,800 BTU
- 265 CODES/STANDARDS-CSA/CMVSS
- 1B1 CODES/STANDARDS USA

FOR ELECTRICAL TORQUE SPECIFICATIONS SEE DWG NO. 128783-01-000

FOR ELECTRICAL CALLOUTS SEE DWG NO. 121339-01-000

| | | | |
|-------------------------------|---------|---------|-------------|
| FIRST USED | | 15 E27N | |
| DO NOT SCALE DRAWING | | | |
| TITLE: WIRING INSTL-BODY, 12V | | | |
| SHEET 2 | PART NO | 188163 | REV |
| | | 1 | 05-Feb-2015 |

188163



- 4 WIRE PASSES THROUGH FLOOR IN THIS AREA.
- 3 MOUNT MAGNET USING PILOT HOLES IN SCREEN DOOR FRAME, MOUNT WITH MAGNET TOWARD SWITCH.
- 2 MOUNT SWITCH AND SPACER TO BLOCK ON JAMB, ADJUST HEIGHT TO MATCH MAGNET.

1. AT MINIMUM ALL WIRES TO BE SUPPORTED AND SECURED PER CODE REQUIREMENTS. USE CLAMP 10495 OR 10497 OR WIRE TIE 8343 OR 108046 AND SCREW G67-XX-XXX OR G56-XX-XXX AS APPROPRIATE FOR INSTALLATION.

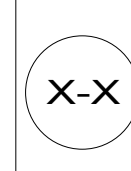
NOTES:

- 1D3 ENTERTAIN CENTR/EXT TV-DVD
- 92A EXT FULL BODY PAINT PKG # 2
- 27G EXTERIOR GRAPHICS PACKAGE #1
- 27A EXT FULL BODY PAINT PKG #1
- 26H EXT GRAPHIC/PAINT-DLX PKG 2
- 26F EXT GRAPHIC/PAINT DLX PKG 1
- 24C EXT FULL BODY PAINT PKG # 3
- 265 CODES/STANDARDS-CSA/CMVSS
- 1B1 CODES/STANDARDS USA

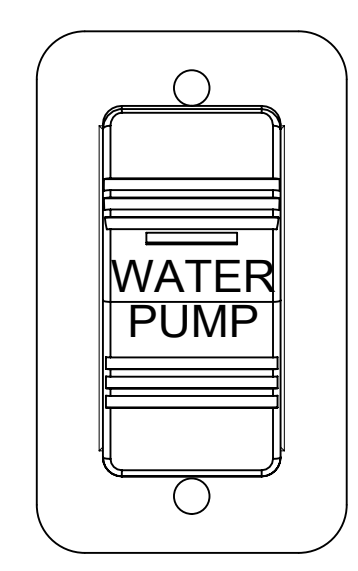
| | |
|--------------------------------------|---------------------------|
| 1B1 | 265 |
| FIRST USED | |
| 15 E27N | |
| DO NOT SCALE DRAWING | |
| TITLE: WIRING INSTL-BODY, 12V | |
| SHEET 3 | PART NO 188163 REV |

FOR ELECTRICAL TORQUE SPECIFICATIONS SEE DWG NO. 128783-01-000

FOR ELECTRICAL CALLOUTS SEE DWG NO. 121339-01-000

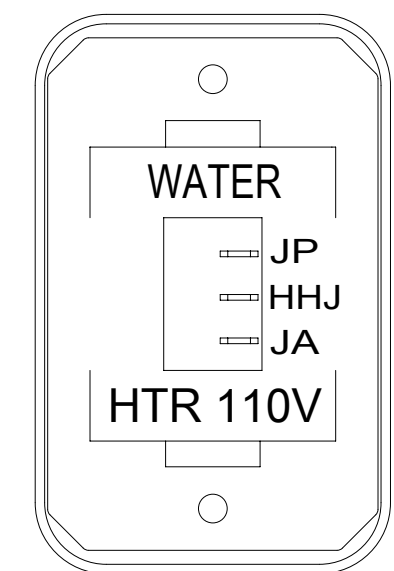


188163



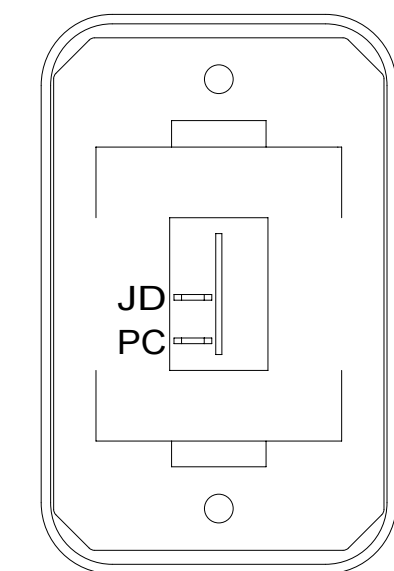
SWITCH-PUMP
108357-15-000
ACTUATOR
108356-23-CHT
PLATE
98351-07-CHT
SCREW
G11-06-10U (2)

DETAIL DA
(2 PLACES)



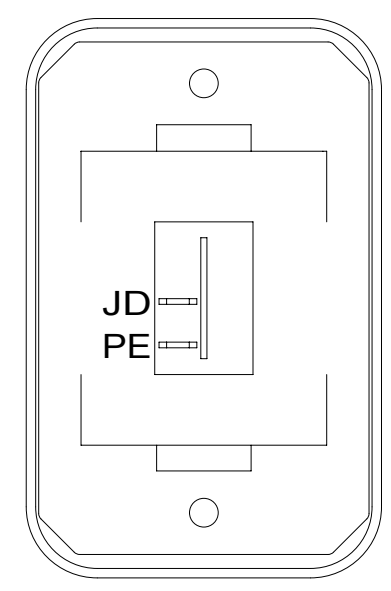
SWITCH-ROCKER
135740-06-CHT
SWITCH-BASE
135741-01-CHT
SWITCH-BEZEL
135742-35-CHT
SCREW
G11-08-08U (2)

DETAIL DF



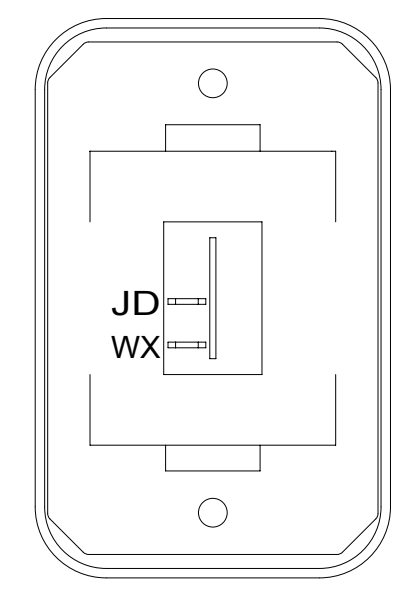
SWITCH-ROCKER
135740-01-CHT
SWITCH-BASE
135741-01-CHT
SWITCH-BEZEL
135742-01-CHT
SCREW
G11-08-08U (2)

DETAIL DN



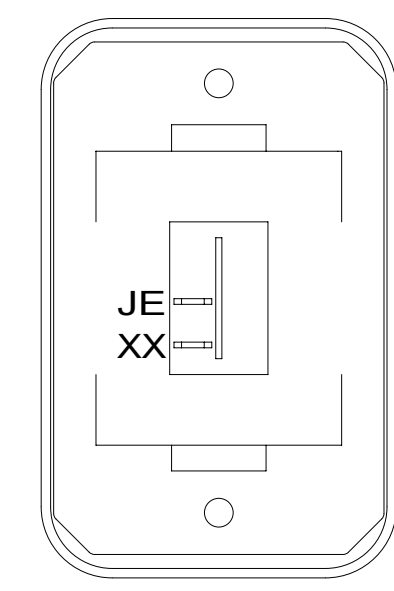
SWITCH-ROCKER
135740-01-CHT
SWITCH-BASE
135741-01-CHT
SWITCH-BEZEL
135742-01-CHT
SCREW
G11-08-08U (2)

DETAIL DB



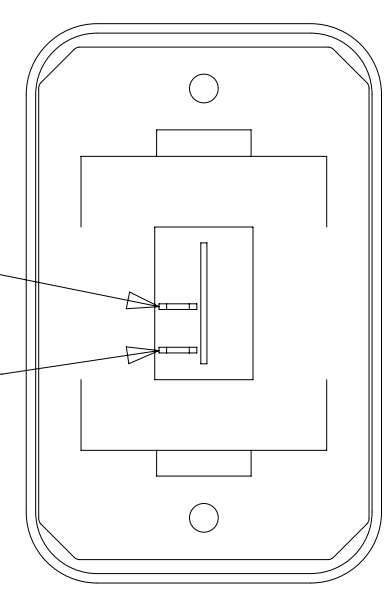
SWITCH-ROCKER
135740-01-CHT
SWITCH-BASE
135741-01-CHT
SWITCH-BEZEL
135742-01-CHT
SCREW
G11-08-08U (2)

DETAIL DJ



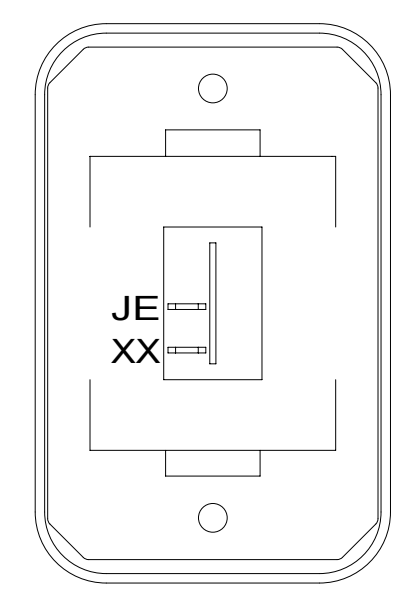
SWITCH-ROCKER
135740-01-CHT
SWITCH-BASE
135741-01-CHT
SWITCH-BEZEL
135742-01-CHT
SCREW
G11-08-08U (2)

DETAIL DP



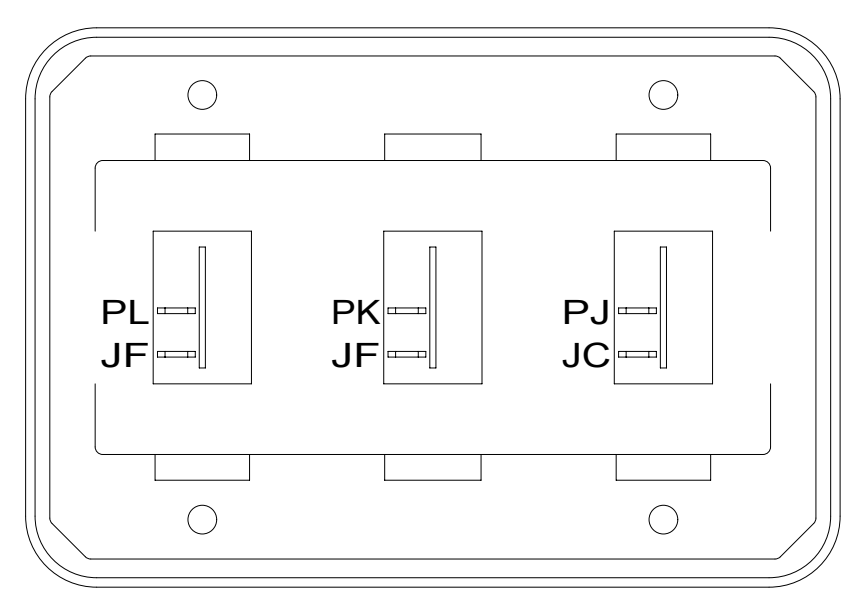
SWITCH-ROCKER
135740-01-CHT
SWITCH-BASE
135741-01-CHT
SWITCH-BEZEL
135742-01-CHT
SCREW
G11-08-08U (2)

DETAIL DC



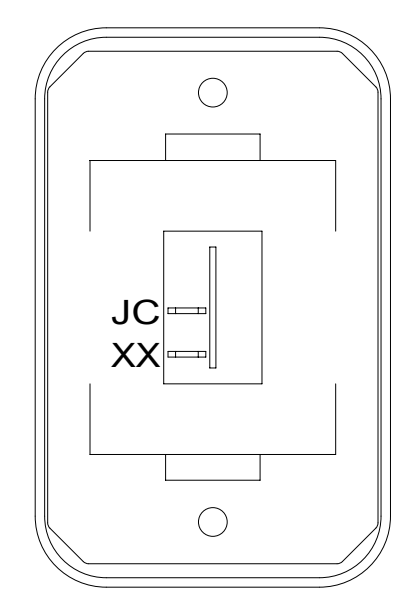
SWITCH-ROCKER
135740-01-CHT
SWITCH-BASE
135741-01-CHT
SWITCH-BEZEL
135742-01-CHT
SCREW
G11-08-08U (2)

DETAIL DK



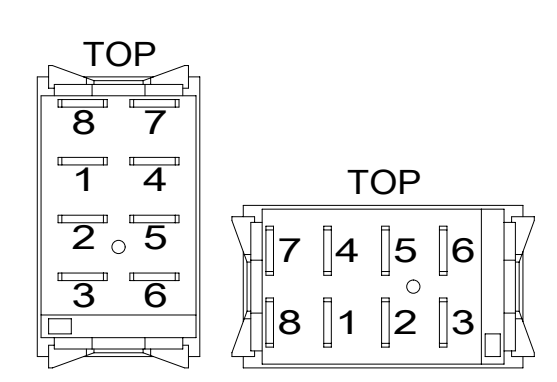
SWITCH-ROCKER
135740-01-CHT (3)
SWITCH-BASE
135741-03-CHT
SWITCH-BEZEL
135742-03-CHT
SCREW
G11-08-08U (4)

DETAIL DD

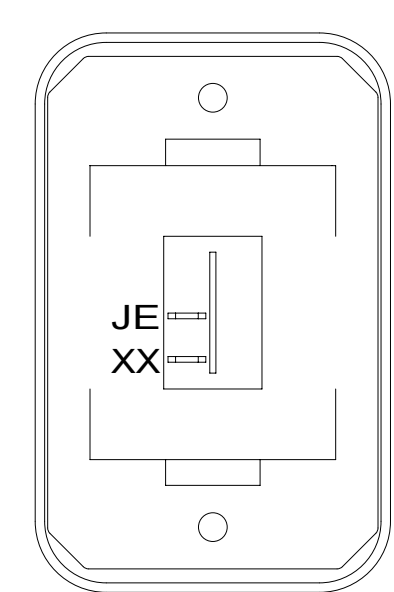


SWITCH-ROCKER
135740-01-CHT
SWITCH-BASE
135741-01-CHT
SWITCH-BEZEL
135742-01-CHT
SCREW
G11-08-08U (2)

DETAIL DL



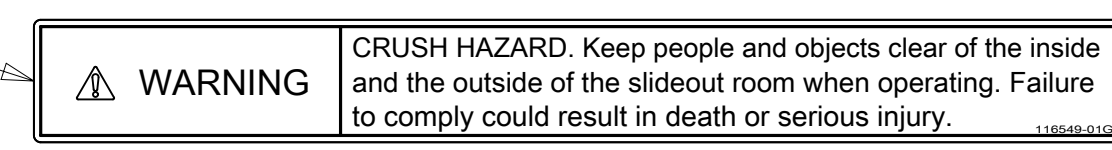
DETAIL DE



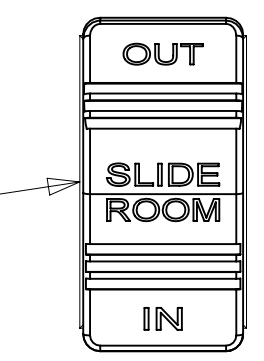
SWITCH-ROCKER
135740-01-CHT
SWITCH-BASE
135741-01-CHT
SWITCH-BEZEL
135742-01-CHT
SCREW
G11-08-08U (2)

DETAIL DM

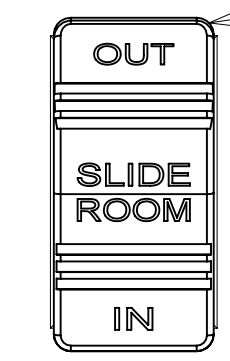
LABEL-WARNING,SLIDEOUT
116549-01-000



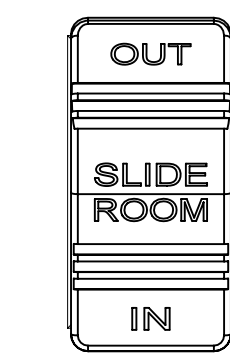
SWITCH
108357-07-000
ACTUATOR
108356-24-CHT
CIRCUITS
BBM,DT,BBN



DRIVER'S
SIDE REAR



DRIVER'S
SIDE FRONT



PASSENGER'S
SIDE REAR

SWITCH
108357-07-000
ACTUATOR
108356-24-CHT
CIRCUITS
DR,DT,DU

SWITCH
108357-07-000
ACTUATOR
108356-24-CHT
CIRCUITS
LLZ,DT,MMC

LABEL-SLIDEOUT
PASS,REAR
163992-03-CHT

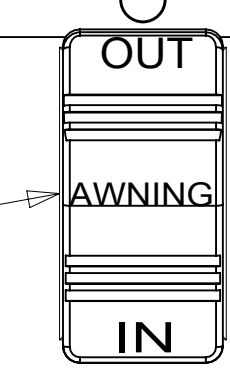
LABEL-SLIDEOUT,
DRIVER,REAR
163992-02-CHT

LABEL-SLIDEOUT,
DRIVER,FRONT
163992-01-CHT

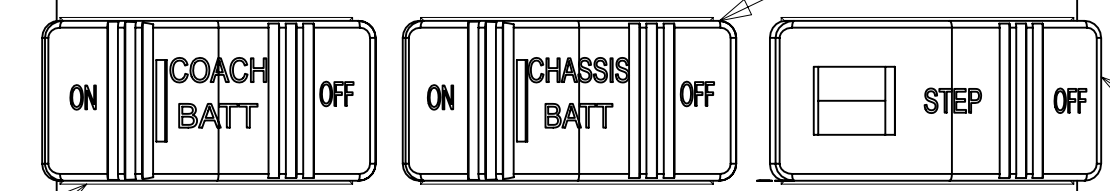
DETAIL DG

PLATE-SWITCH
158431-29-CHT
SEAL-FUSE BOX
092492-25-000
SCREW
000G11-06-10U (6)

SWITCH-AWNING
108357-06-000
ACTUATOR-SWITCH
108356-12-CHT
CIRCUITS
FFD,FFR,FFE,
FFE,JJR,FFD



SWITCH-CHASSIS BATTERY
108357-18-000
ACTUATOR-SWITCH
108356-20-CHT
CIRCUITS
UUC,TTY,UUB
UUB,TTZ,MK
WIRE ASM-THERM
186796-01-000



SWITCH-COACH BATT
108357-18-000
ACTUATOR-SWITCH
108356-19-CHT
CIRCUITS
KF,LG,LJ,LH,WC
WIRE ASM-THERM
186796-01-000

SWITCH-STEP
108357-19-000
CIRCUITS
ER,ES



DETAIL DH 1

2 PLACE AROUND ENTIRE PERIMETER WITH SEAM AT BOTTOM.
1 FOR SWITCH ORIENTATION SEE DETAIL DE

FOR ELECTRICAL TORQUE SPECIFICATIONS SEE DWG NO. 128783-01-000

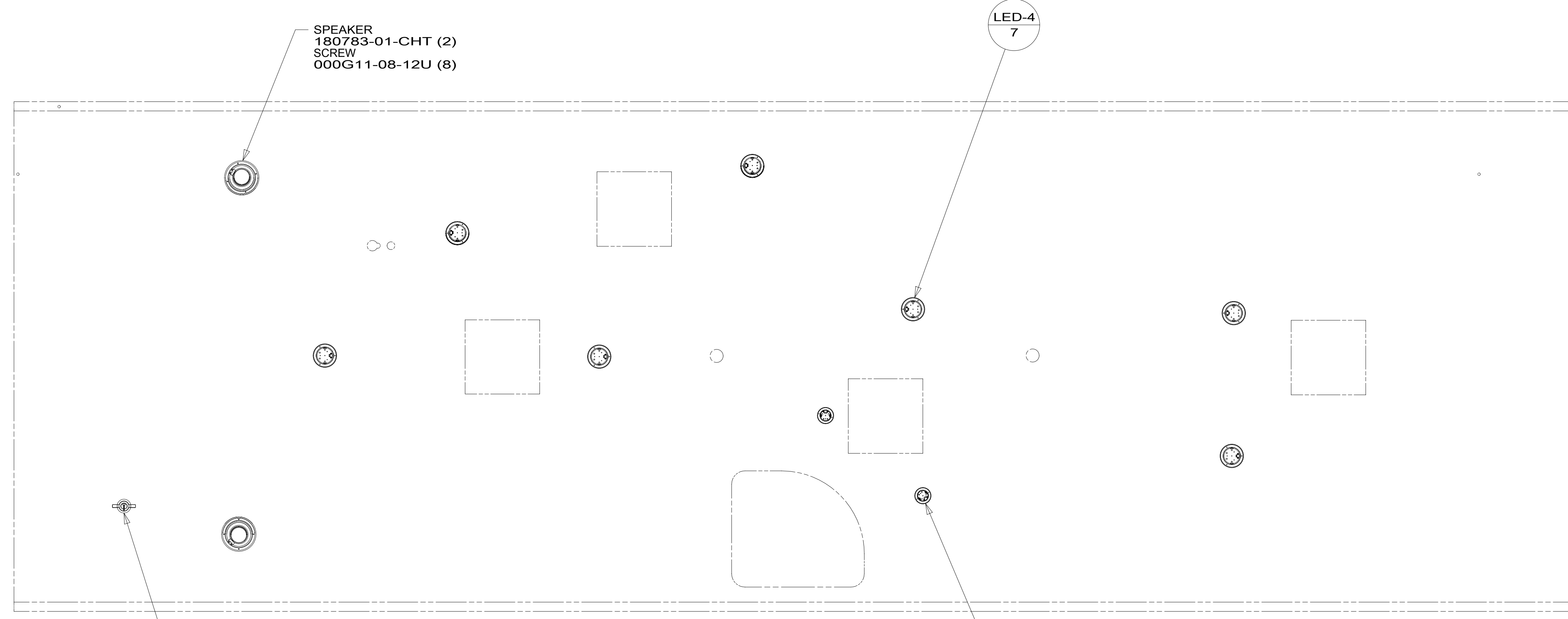
FOR ELECTRICAL CALLOUTS SEE DWG NO. 121339-01-000

265 CODES/STANDARDS-CSA/CMVSS

1B1 CODES/STANDARDS USA

1B1 265

| | | |
|--------------------------------------|-----------------------|-----|
| FIRST USED | 15 E27N | |
| DO NOT SCALE DRAWING | | |
| TITLE: WIRING INSTL-BODY, 12V | | |
| SHEET 4 | PART NO 188163 | REV |



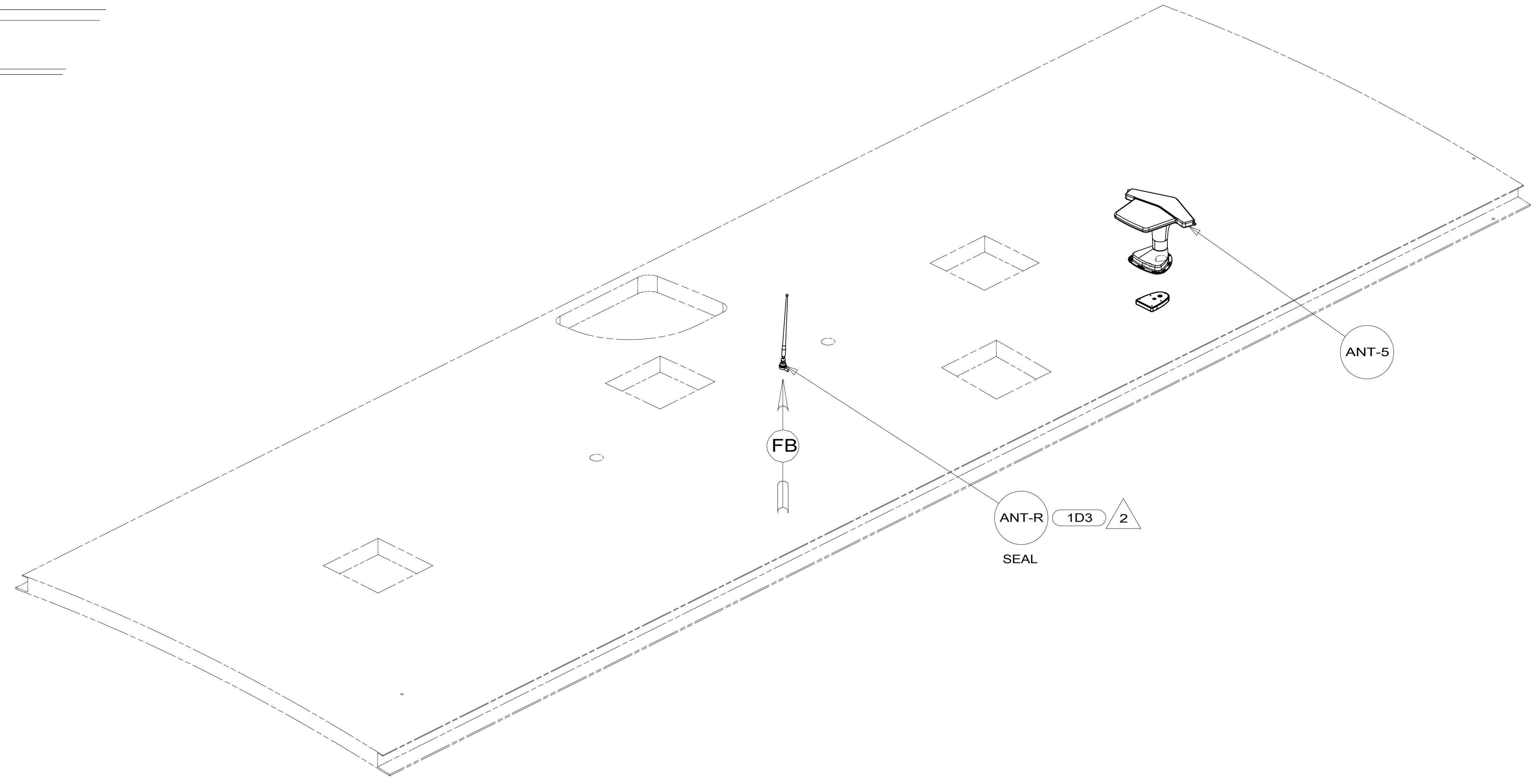
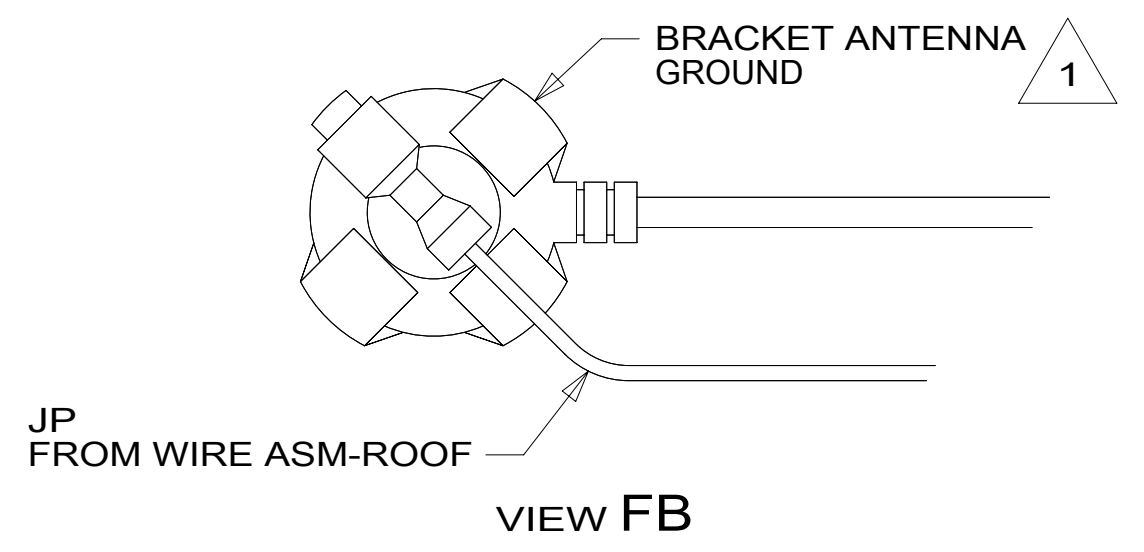
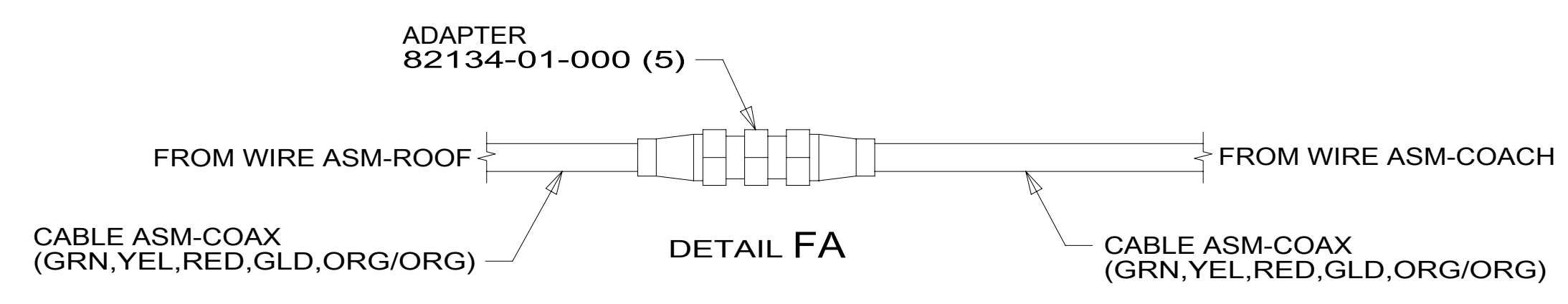
FOR ELECTRICAL TORQUE SPECIFICATIONS SEE DWG NO. 128783-01-000

FOR ELECTRICAL CALLOUTS SEE DWG NO. 121339-01-000

- 45B LOFT BED
- 265 CODES/STANDARDS-CSA/CMVSS
- 1B1 CODES/STANDARDS USA

| | | | |
|--------------------------------------|---------|----------------|-------------|
| FIRST USED | | 15 E27N | |
| DO NOT SCALE DRAWING | | | |
| TITLE: WIRING INSTL-BODY, 12V | | | |
| SHEET 5 | PART NO | 188163 | REV |
| | | 1 | 05-Feb-2015 |

188163



- NOTES:
- 2 REMOVE GROUND WIRE FROM ANTENNA BASE.
 - 1 WRAP LEGS AROUND ANTENNA BASE.

FOR ELECTRICAL TORQUE SPECIFICATIONS SEE DWG NO. 128783-01-000

FOR ELECTRICAL CALLOUTS SEE DWG NO. 121339-01-000

- 1D3 ENTERTAIN CENTR/EXT TV-DVD
- 265 CODES/STANDARDS-CSA/CMVSS
- 1B1 CODES/STANDARDS USA

1B1 265

| | | |
|--------------------------------------|-----------------------|-----|
| FIRST USED | 15 E27N | |
| DO NOT SCALE DRAWING | | |
| TITLE: WIRING INSTL-BODY, 12V | | |
| SHEET 6 | PART NO 188163 | REV |

188163