



DANGER

Danger of electrical shock, burns or death. Always remove all power sources before attempting any repair, service or diagnostic work. Power can be present from shore power, generator, inverter or battery. All power sources must be disabled and secured before performing any service.

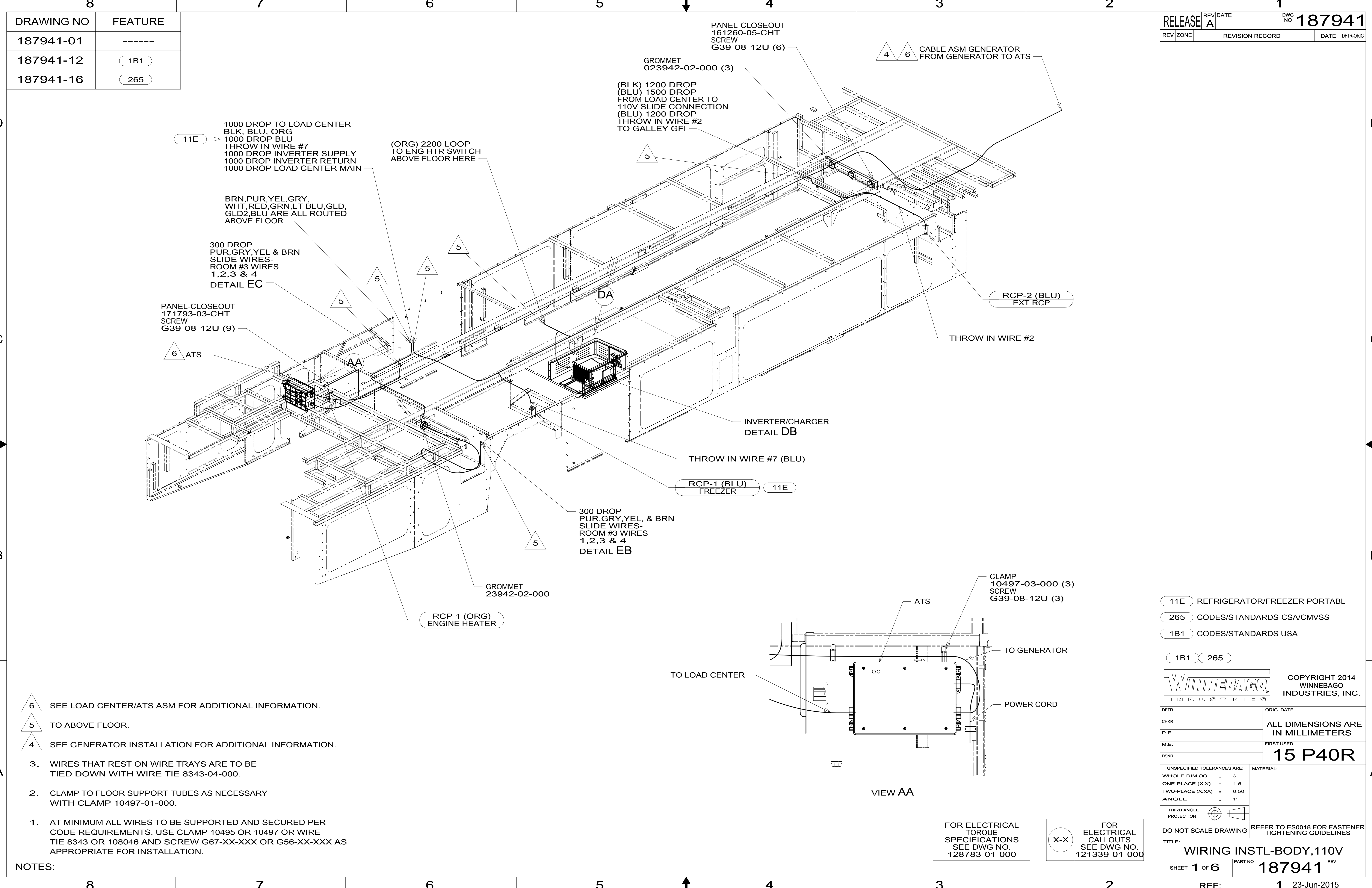


CAUTION

If you lack the skills, tools or equipment to perform diagnostic or repair work leave such work to an authorized Winnebago Industries dealer or other qualified shop.

DRAWING NO	FEATURE
187941-01	-----
187941-12	(1B1)
187941-16	(265)

RELEASE	REV/DATE	DWG NO	187941
REV ZONE	REVISION RECORD	DATE	DFTR-ORIG



11E 1000 DROP TO LOAD CENTER
BLK, BLU, ORG
1000 DROP BLU
THROW IN WIRE #7
1000 DROP INVERTER SUPPLY
1000 DROP INVERTER RETURN
1000 DROP LOAD CENTER MAIN

BRN, PUR, YEL, GRY,
WHT, RED, GRN, LT BLU, GLD,
GLD2, BLU ARE ALL ROUTED
ABOVE FLOOR

300 DROP
PUR, GRY, YEL & BRN
SLIDE WIRES-
ROOM #3 WIRES
1,2,3 & 4
DETAIL EC

PANEL-CLOSEOUT
171793-03-CHT
SCREW
G39-08-12U (9)

6 ATS

(ORG) 2200 LOOP
TO ENG HTR SWITCH
ABOVE FLOOR HERE

PANEL-CLOSEOUT
161260-05-CHT
SCREW
G39-08-12U (6)

GROMMET
023942-02-000 (3)

(BLK) 1200 DROP
(BLU) 1500 DROP
FROM LOAD CENTER TO
110V SLIDE CONNECTION
(BLU) 1200 DROP
THROW IN WIRE #2
TO GALLEY GFI

4 6 CABLE ASM GENERATOR
FROM GENERATOR TO ATS

RCP-2 (BLU)
EXT RCP

THROW IN WIRE #2

INVERTER/CHARGER
DETAIL DB

THROW IN WIRE #7 (BLU)

RCP-1 (BLU)
FREEZER

11E

300 DROP
PUR, GRY, YEL, & BRN
SLIDE WIRES-
ROOM #3 WIRES
1,2,3 & 4
DETAIL EB

GROMMET
23942-02-000

RCP-1 (ORG)
ENGINE HEATER

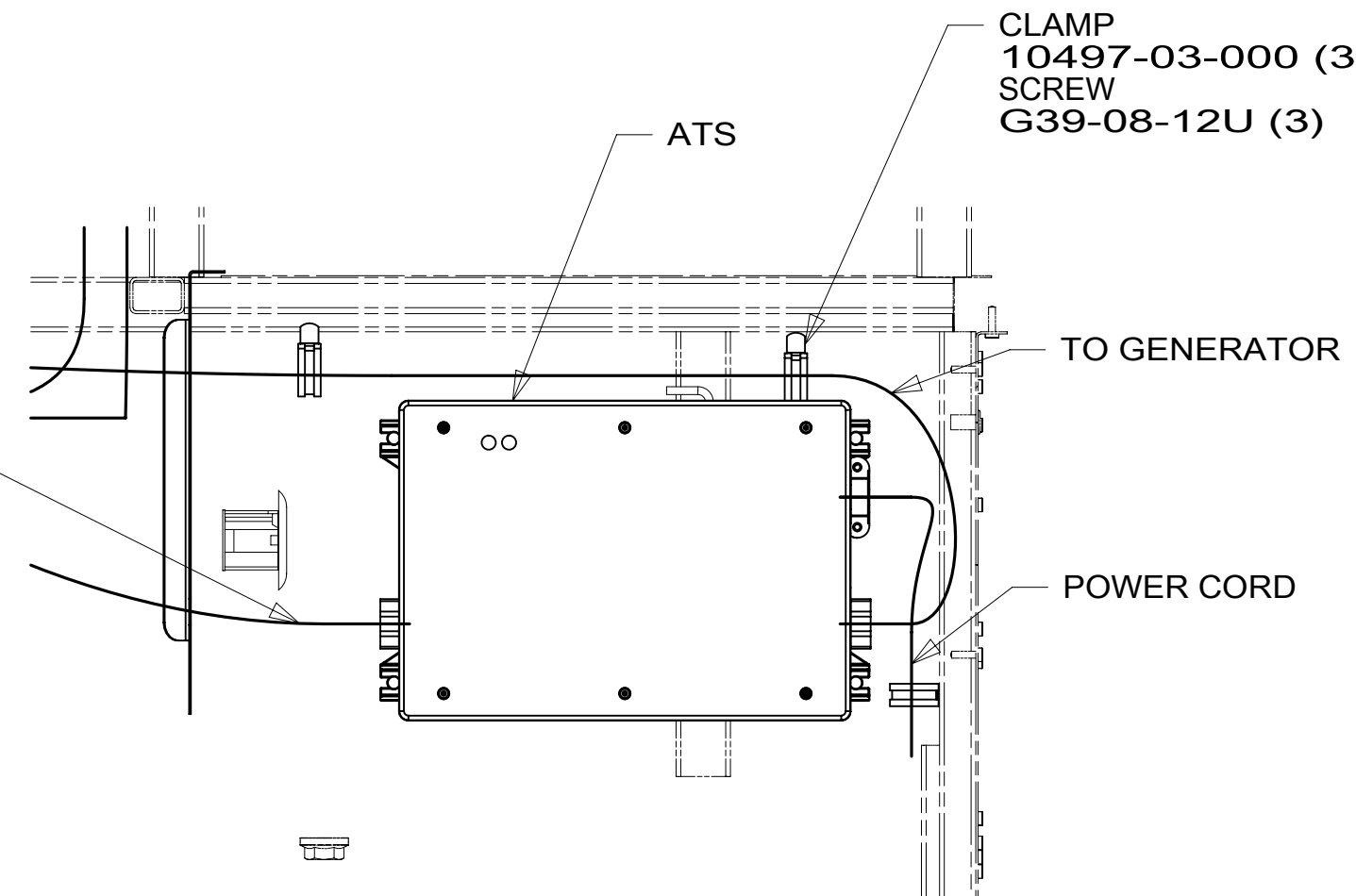
CLAMP
10497-03-000 (3)
SCREW
G39-08-12U (3)

ATS

TO GENERATOR

POWER CORD

TO LOAD CENTER



VIEW AA

- 6 SEE LOAD CENTER/ATS ASM FOR ADDITIONAL INFORMATION.
- 5 TO ABOVE FLOOR.
- 4 SEE GENERATOR INSTALLATION FOR ADDITIONAL INFORMATION.

3. WIRES THAT REST ON WIRE TRAYS ARE TO BE TIED DOWN WITH WIRE TIE 8343-04-000.
2. CLAMP TO FLOOR SUPPORT TUBES AS NECESSARY WITH CLAMP 10497-01-000.
1. AT MINIMUM ALL WIRES TO BE SUPPORTED AND SECURED PER CODE REQUIREMENTS. USE CLAMP 10495 OR 10497 OR WIRE TIE 8343 OR 108046 AND SCREW G67-XX-XXX OR G56-XX-XXX AS APPROPRIATE FOR INSTALLATION.

NOTES:

FOR ELECTRICAL
TORQUE
SPECIFICATIONS
SEE DWG NO.
128783-01-000

FOR
ELECTRICAL
CALLOUTS
SEE DWG NO.
121339-01-000

- 11E REFRIGERATOR/FREEZER PORTABL
- 265 CODES/STANDARDS-CSA/CMVSS
- 1B1 CODES/STANDARDS USA

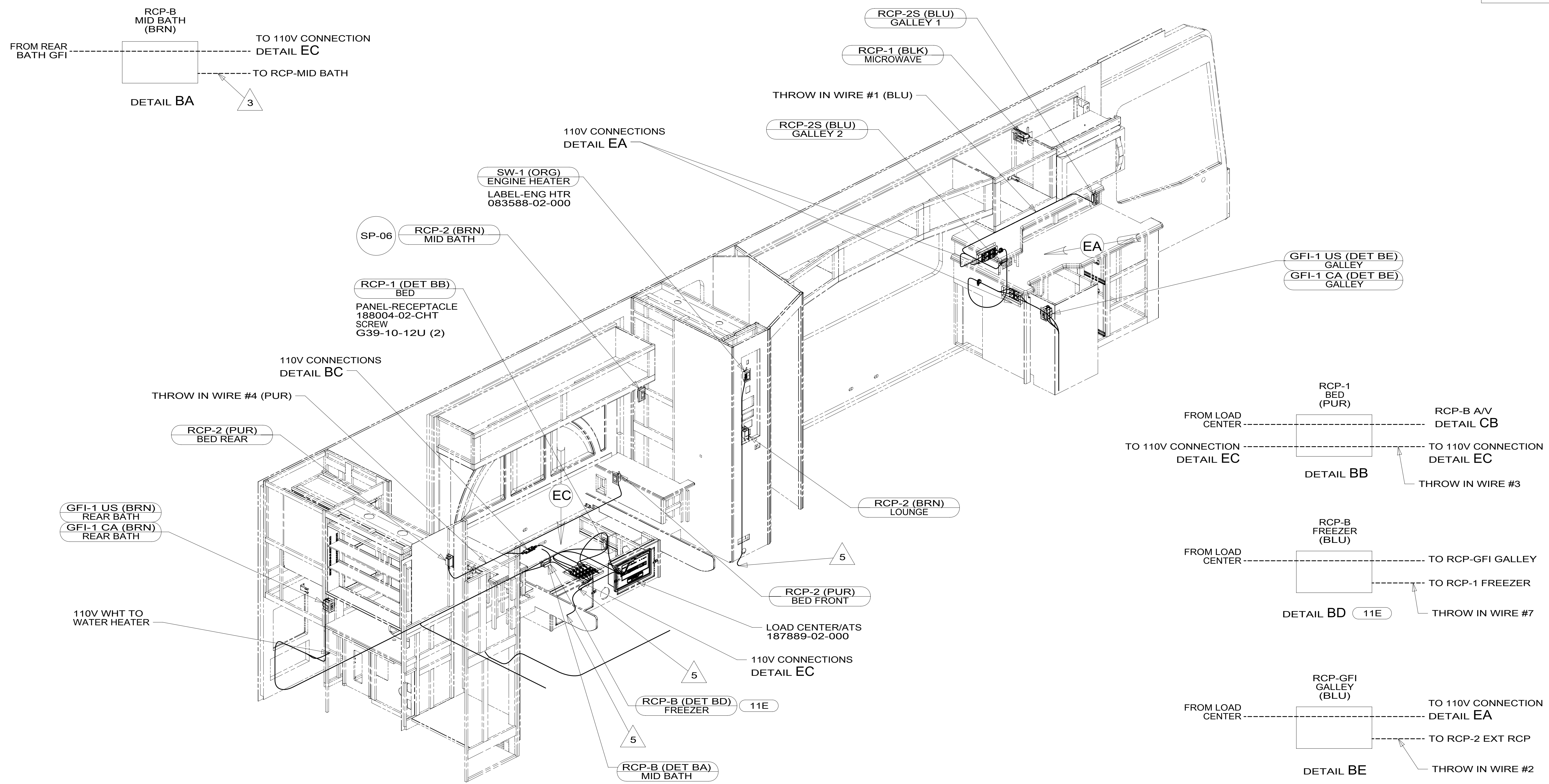
1B1 265



DFTR	ORIG. DATE
CHKR	ALL DIMENSIONS ARE IN MILLIMETERS
P.E.	
M.E.	FIRST USED
DSNR	15 P40R
UNSPECIFIED TOLERANCES ARE:	
WHOLE DIM (X)	: 3
ONE-PLACE (X.X)	: 1.5
TWO-PLACE (X.XX)	: 0.50
ANGLE	: 1°
THIRD ANGLE PROJECTION	
DO NOT SCALE DRAWING REFER TO ES0018 FOR FASTENER TIGHTENING GUIDELINES	
TITLE: WIRING INSTL-BODY, 110V	

SHEET 1 OF 6	PART NO 187941	REV
REF:	1	23-Jun-2015

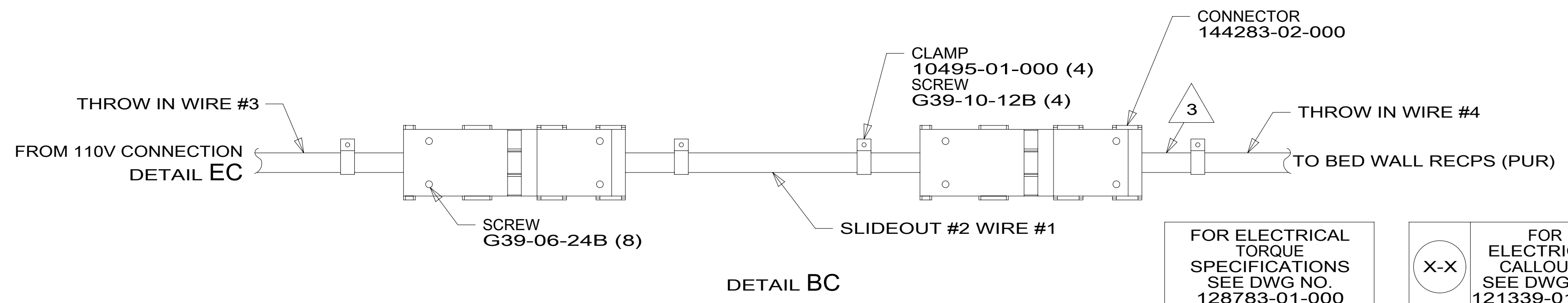
187941



- 5 TO BELOW FLOOR.
- 4 MOUNT TO SIDEWALL.
- 3 WIRE ROUTED IN SIDEWALL.

2. ALL 110V WIRES TO BE CLAMPED WITH CLAMP 10497-05-000 WITHIN 200MM OF OUTLET BOXES, USE SCREW G67-10-12B.
1. AT MINIMUM ALL WIRES TO BE SUPPORTED AND SECURED PER CODE REQUIREMENTS. USE CLAMP 10495 OR 10497 OR WIRE TIE 8343 OR 108046 AND SCREW G67-XX-XXX OR G56-XX-XXX AS APPROPRIATE FOR INSTALLATION.

NOTES:



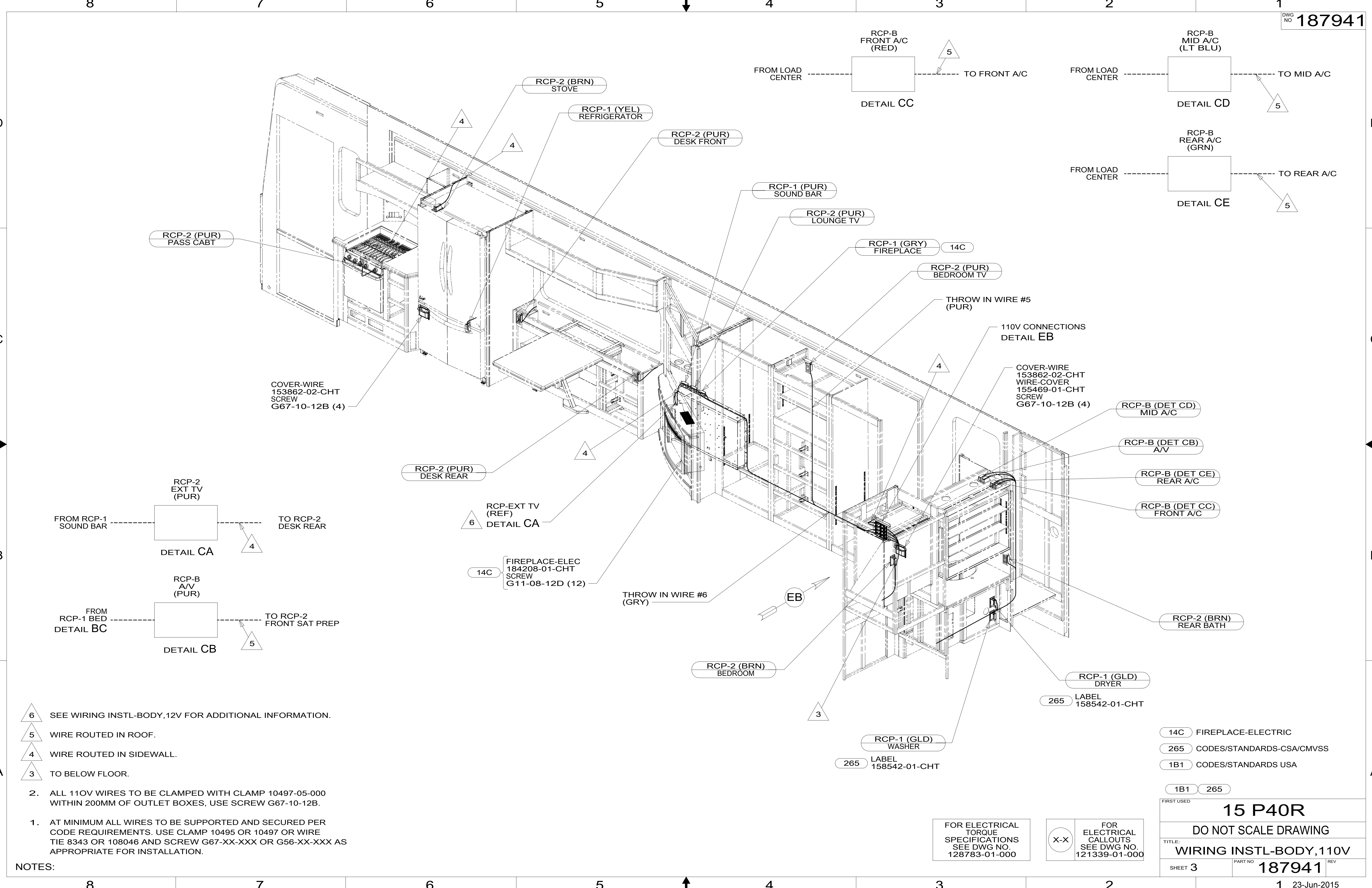
FOR ELECTRICAL TORQUE SPECIFICATIONS SEE DWG NO. 128783-01-000

FOR ELECTRICAL CALLOUTS SEE DWG NO. 121339-01-000

- 11E REFRIGERATOR/FREEZER PORTABL
- 265 CODES/STANDARDS-CSA/CMVSS
- 1B1 CODES/STANDARDS USA

FIRST USED		15 P40R	
DO NOT SCALE DRAWING			
TITLE: WIRING INSTL-BODY, 110V			
SHEET 2	PART NO	187941	REV

187941



- 6 SEE WIRING INSTL-BODY, 12V FOR ADDITIONAL INFORMATION.
- 5 WIRE ROUTED IN ROOF.
- 4 WIRE ROUTED IN SIDEWALL.
- 3 TO BELOW FLOOR.

2. ALL 110V WIRES TO BE CLAMPED WITH CLAMP 10497-05-000 WITHIN 200MM OF OUTLET BOXES, USE SCREW G67-10-12B.
1. AT MINIMUM ALL WIRES TO BE SUPPORTED AND SECURED PER CODE REQUIREMENTS. USE CLAMP 10495 OR 10497 OR WIRE TIE 8343 OR 108046 AND SCREW G67-XX-XXX OR G56-XX-XXX AS APPROPRIATE FOR INSTALLATION.

NOTES:

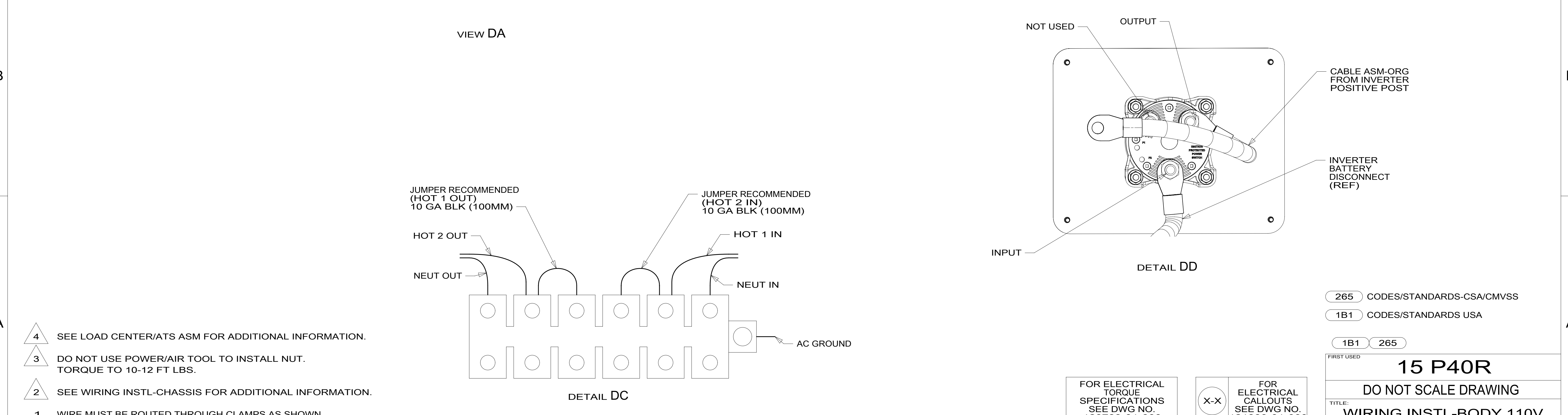
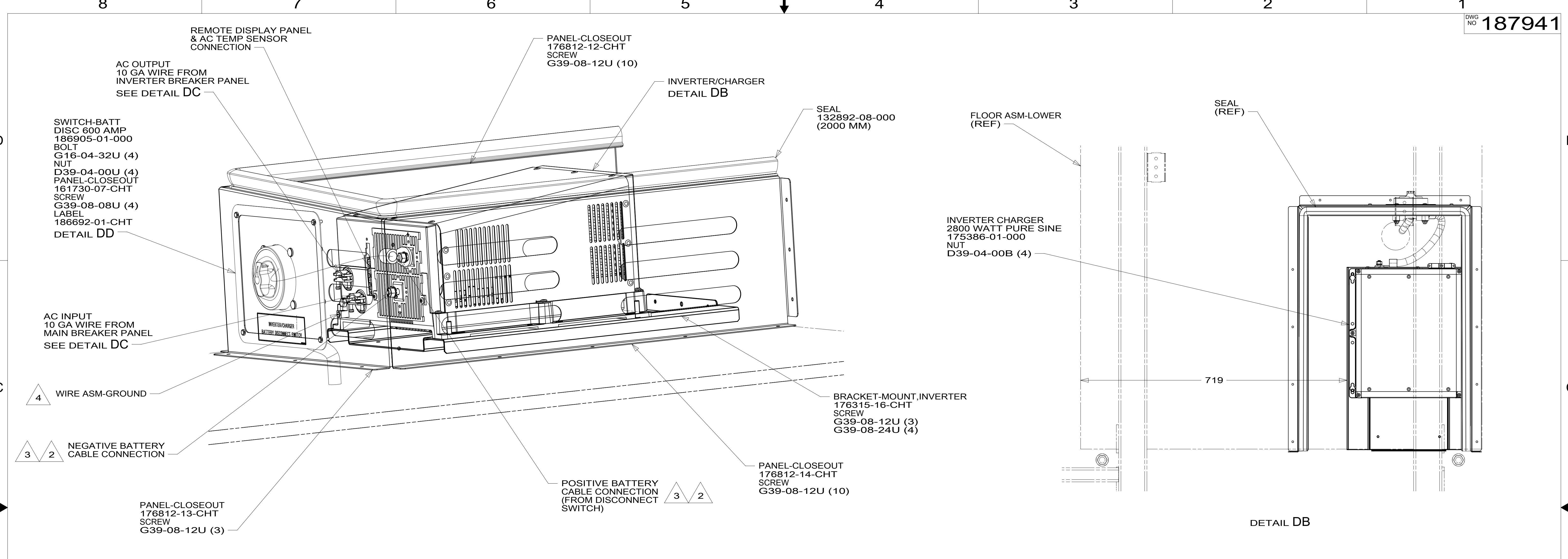
- 14C FIREPLACE-ELECTRIC
- 265 CODES/STANDARDS-CSA/CMVSS
- 1B1 CODES/STANDARDS USA
- 1B1 265

FOR ELECTRICAL TORQUE SPECIFICATIONS SEE DWG NO. 128783-01-000

FOR ELECTRICAL CALLOUTS SEE DWG NO. 121339-01-000

FIRST USED	
15 P40R	
DO NOT SCALE DRAWING	
TITLE: WIRING INSTL-BODY, 110V	
SHEET 3	PART NO 187941 REV
1 23-Jun-2015	

187941



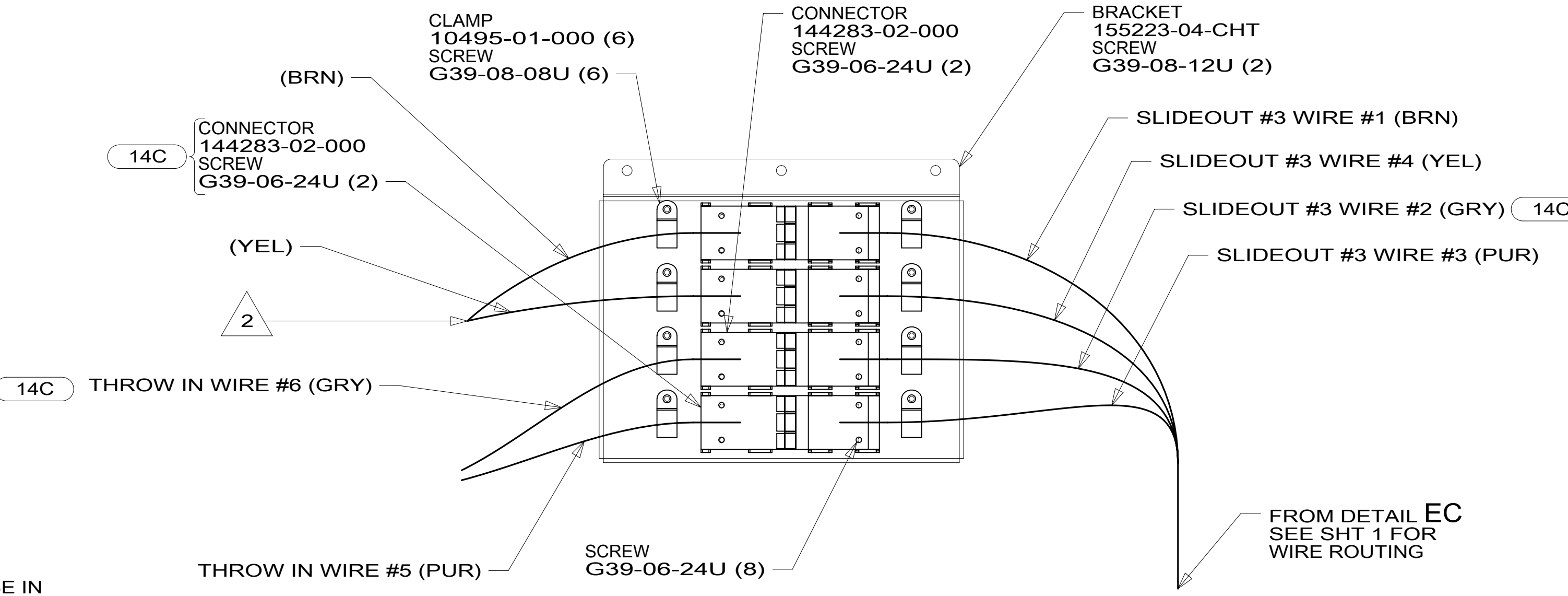
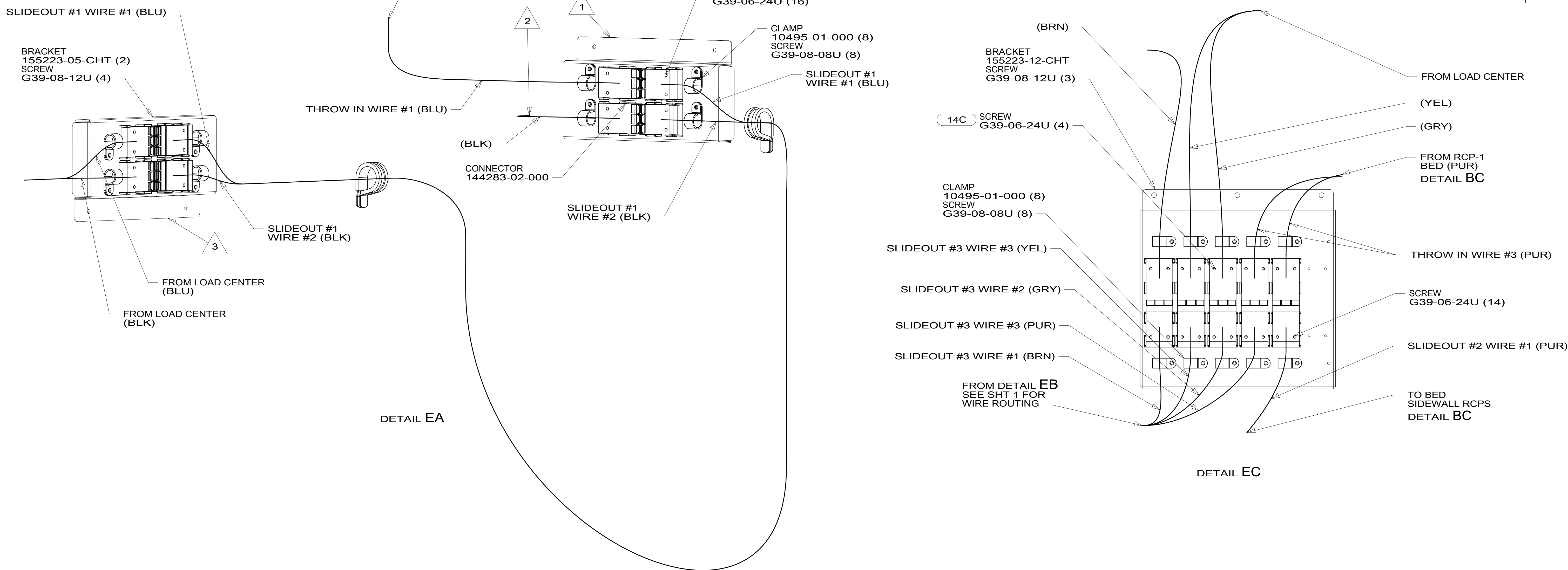
- NOTES:**
- 4 SEE LOAD CENTER/ATS ASM FOR ADDITIONAL INFORMATION.
 - 3 DO NOT USE POWER/AIR TOOL TO INSTALL NUT. TORQUE TO 10-12 FT LBS.
 - 2 SEE WIRING INSTL-CHASSIS FOR ADDITIONAL INFORMATION.
1. WIRE MUST BE ROUTED THROUGH CLAMPS AS SHOWN.

FOR ELECTRICAL TORQUE SPECIFICATIONS SEE DWG NO. 128783-01-000

X-X FOR ELECTRICAL CALLOUTS SEE DWG NO. 121339-01-000

265	CODES/STANDARDS-CSA/CMVSS
1B1	CODES/STANDARDS USA
1B1	265
FIRST USED	
15 P40R	
DO NOT SCALE DRAWING	
TITLE: WIRING INSTL-BODY, 110V	
SHEET 4	PART NO. 187941 REV
1 23-Jun-2015	

187941



- NOTES:
- 3 110V CONNECTORS ARE MOUNTED TO STEEL TUBE IN GALLEY CABINET.
 - 2 WIRE ROUTED IN SIDEWALL.
 - 1 110V CONNECTORS ARE MOUNTED TO LEFT SIDEWALL.

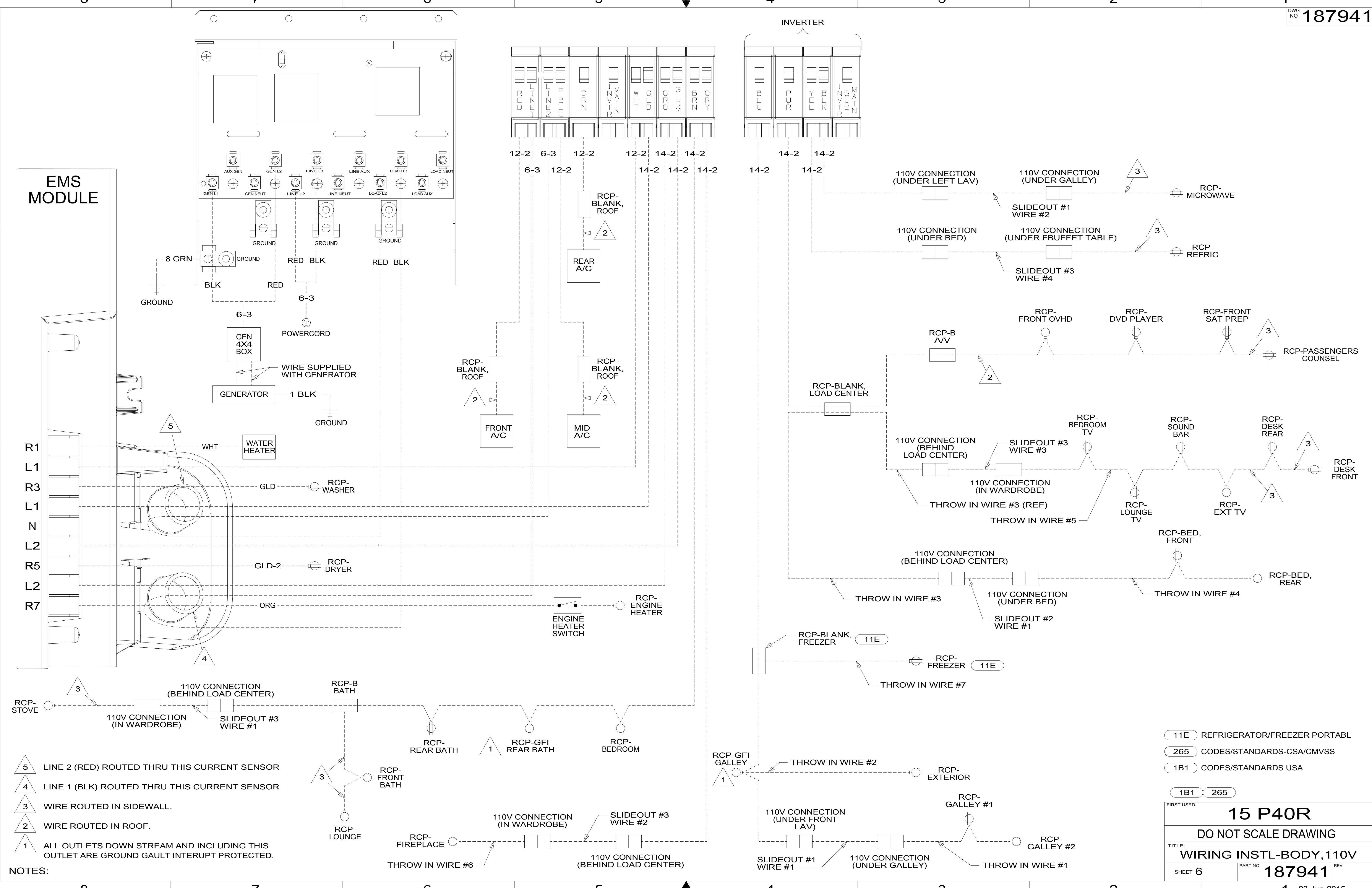
- 14C FIREPLACE-ELECTRIC
- 265 CODES/STANDARDS-CSA/CMVSS
- 1B1 CODES/STANDARDS USA

FIRST USED		15 P40R	
DO NOT SCALE DRAWING			
TITLE: WIRING INSTL-BODY, 110V			
SHEET 5	PART NO.	187941	REV
		1 23-Jun-2015	

FOR ELECTRICAL TORQUE SPECIFICATIONS SEE DWG NO. 128783-01-000

FOR ELECTRICAL CALLOUTS SEE DWG NO. 121339-01-000

187941



- NOTES:
- 5 LINE 2 (RED) ROUTED THRU THIS CURRENT SENSOR
 - 4 LINE 1 (BLK) ROUTED THRU THIS CURRENT SENSOR
 - 3 WIRE ROUTED IN SIDEWALL.
 - 2 WIRE ROUTED IN ROOF.
 - 1 ALL OUTLETS DOWN STREAM AND INCLUDING THIS OUTLET ARE GROUND GAULT INTERRUPT PROTECTED.

- 11E REFRIGERATOR/FREEZER PORTABL
- 265 CODES/STANDARDS-CSA/CMVSS
- 1B1 CODES/STANDARDS USA

FIRST USED		15 P40R	
DO NOT SCALE DRAWING			
TITLE: WIRING INSTL-BODY, 110V			
SHEET 6	PART NO	187941	REV
		23-Jun-2015	

187941