



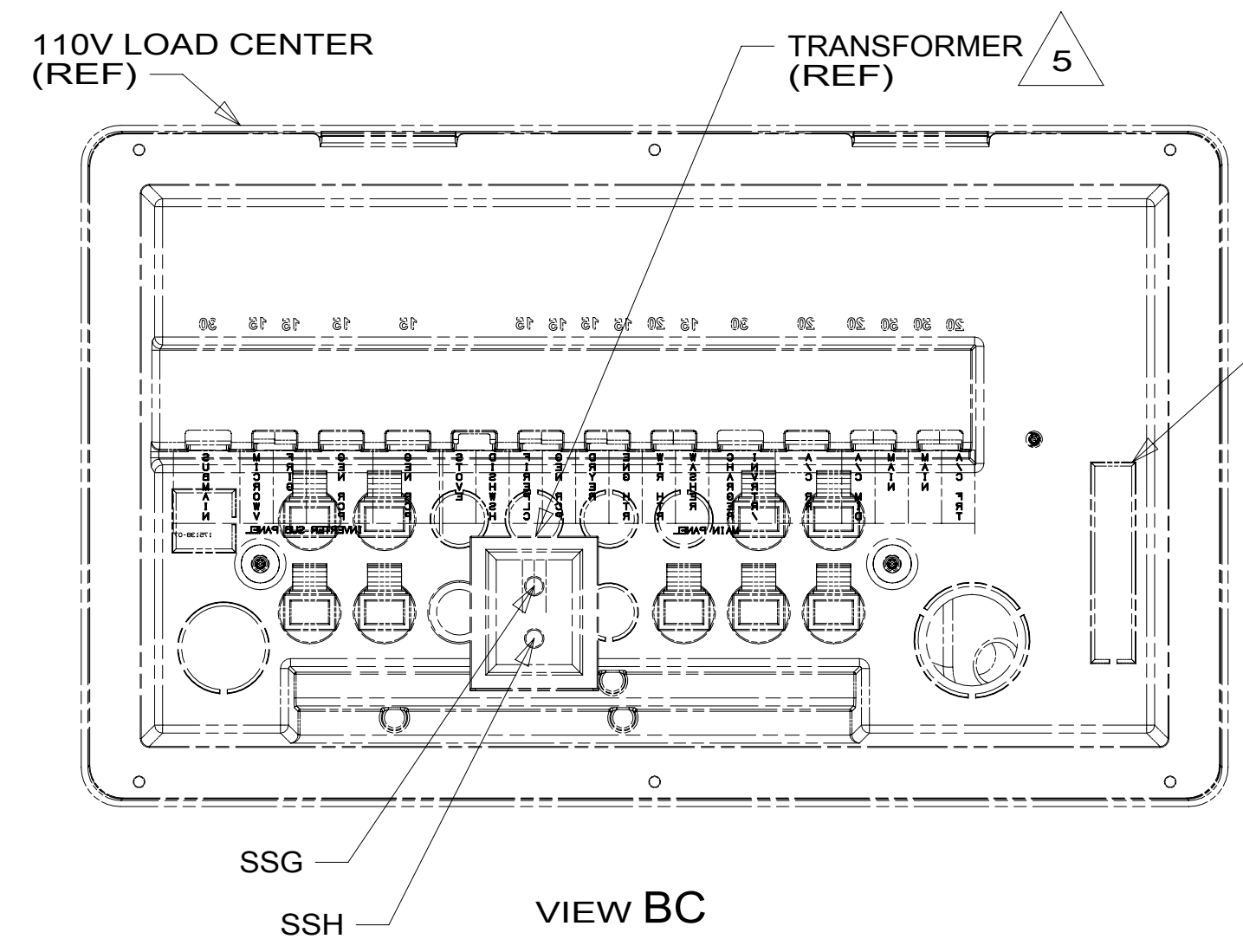
DANGER

Danger of electrical shock, burns or death. Always remove all power sources before attempting any repair, service or diagnostic work. Power can be present from shore power, generator, inverter or battery. All power sources must be disabled and secured before performing any service.



CAUTION

If you lack the skills, tools or equipment to perform diagnostic or repair work leave such work to an authorized Winnebago Industries dealer or other qualified shop.



WIRE ASM-COACH REMOVE KNOCKOUT
DETAIL BD

TEMP SENSOR
171186-02-CHT
SCREW
G67-06-10T (2)
(CONNECTS TO
CIRCUITS TTG & TTH)
(ZONE 2)

SWITCH-ROCKER
135740-01-CHT
SWITCH-BASE
135741-01-CHT
SWITCH-BEZEL
135742-01-CHT
SCREW
G11-08-08U (2)
(CONNECTS TO
CIRCUITS YEL, BBL)

WIRE ASM-OVHD
186200-01-000

WIRE ASM-OVHD
188912-01-000

LED-2C

MAIN 12V DROP TO
WIRE ASM-ROOF
DETAIL FA

WIRE FROM
WIRE ASM-
SIDEWALL

LED-2C
3

RELAY
63912-02-000 (3)
SCREW
G12-08-12U (3)

SWITCH-ROCKER
135740-01-CHT
SWITCH-BASE
135741-01-CHT
SWITCH-BEZEL
135742-01-CHT
SCREW
G11-08-08U (2)
(CONNECTS TO
CIRCUITS YEL, BBL)

6-PIN HOUSING
TO WIRE ASM-SIDEWALL

TEMP SENSOR
171186-02-CHT
SCREW
G67-06-10T (2)
(CONNECTS TO
CIRCUITS YJU & YVU)
(ZONE 3)

SUB POS AND SUB NEG
TO SUBWOOFER
FROM SIDEWALL

MM AND MS
TO SIDE MARKER LAMP

LED-2C
2

WIRE ASM-OVHD
186413-01-000

(2) 3 PIN HOUSINGS
TO WIRE ASM-BED

SUB SUPPLIED WITH
HOME THEATER
BRACE
172938-01-CHT (2)
SCREW
G39-08-12U (8)

WIRE ASM-
COACH

3 PIN HSG
TO SLIDEOUT
WIRE ASM-SIDEWALL

2-PIN HSG
FROM SIDEWALL
TO SOFA

SWITCH
DETAIL EC

SWITCH
DETAIL EN

SWITCH
DETAIL EG

SWITCH
DETAIL EE

SWITCH
DETAIL EH

SWITCH
DETAIL EB

2 PIN HSG
TO SIDEWALL
SERVICE LAMP

LIGHT-COURTESY
108354-01-CHT

DETECTOR-LP GAS
150138-03-CHT

SWITCH
DETAIL EV

EL

12V WIRES TO
CONTROLS IN 110V
LOAD CENTER
DETAIL BC

TO SLIDEOUT CONTROL

12V BREAKER PANEL
DETAIL DA

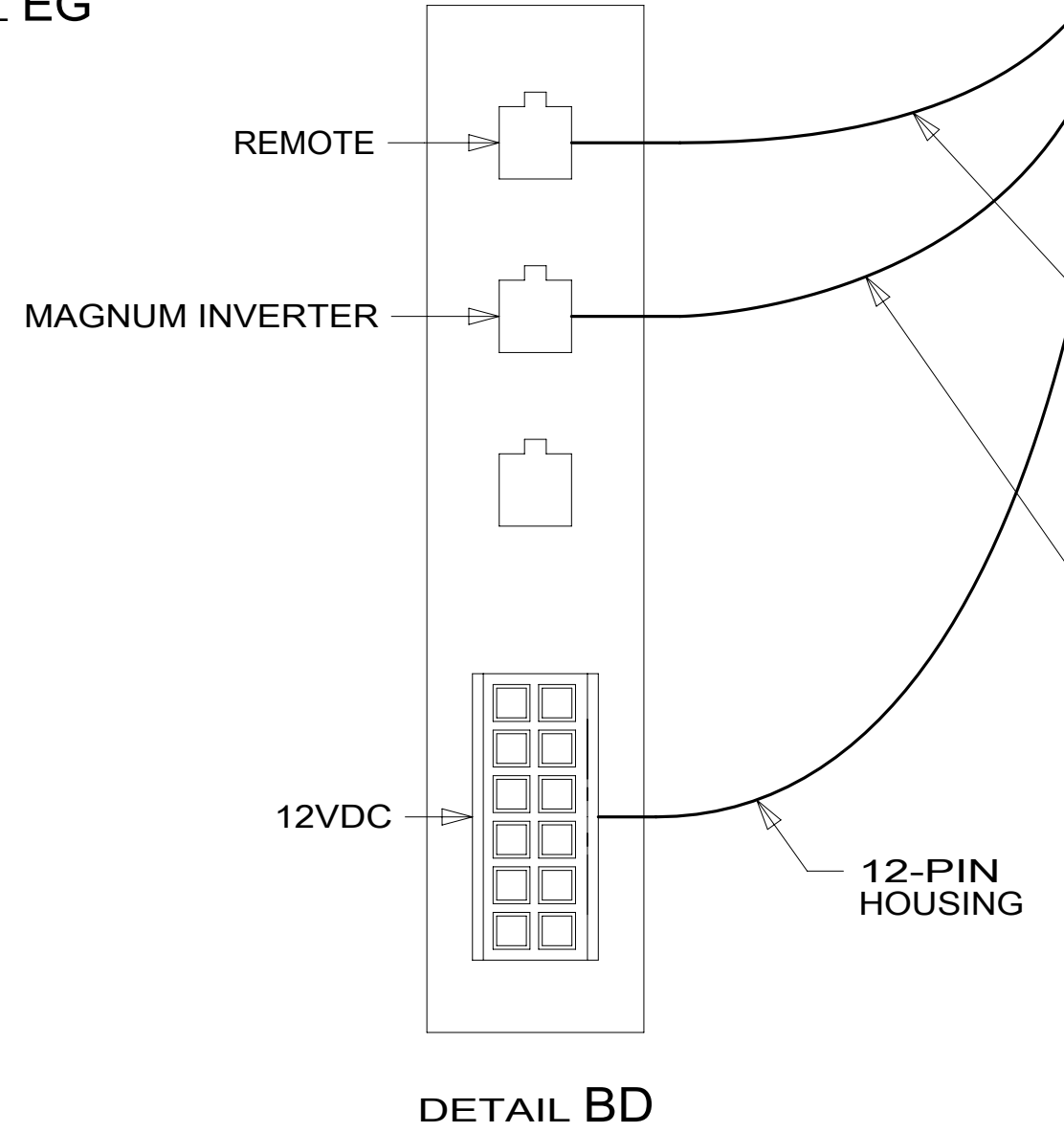
SWITCH
DETAIL EW

WIRE ASM-COACH
TO RIGHT SIDE

4-PIN HOUSING
TO REAR FURNACE

4-PIN HOUSING
TO WATER HEATER

1BT WIRE ASM-
WATER HEATER
188043-01-000



- 1BT WATER HEATER, TANKLESS
- 265 CODES/STANDARDS-CSA/CMVSS
- 1B1 CODES/STANDARDS USA

1B1 265

FIRST USED		15 P40R	
DO NOT SCALE DRAWING			
TITLE: WIRING INSTL-BODY, 12V			
SHEET 2	PART NO	187940	REV
		14-May-2015	

FOR ELECTRICAL
TORQUE
SPECIFICATIONS
SEE DWG NO.
128783-01-000

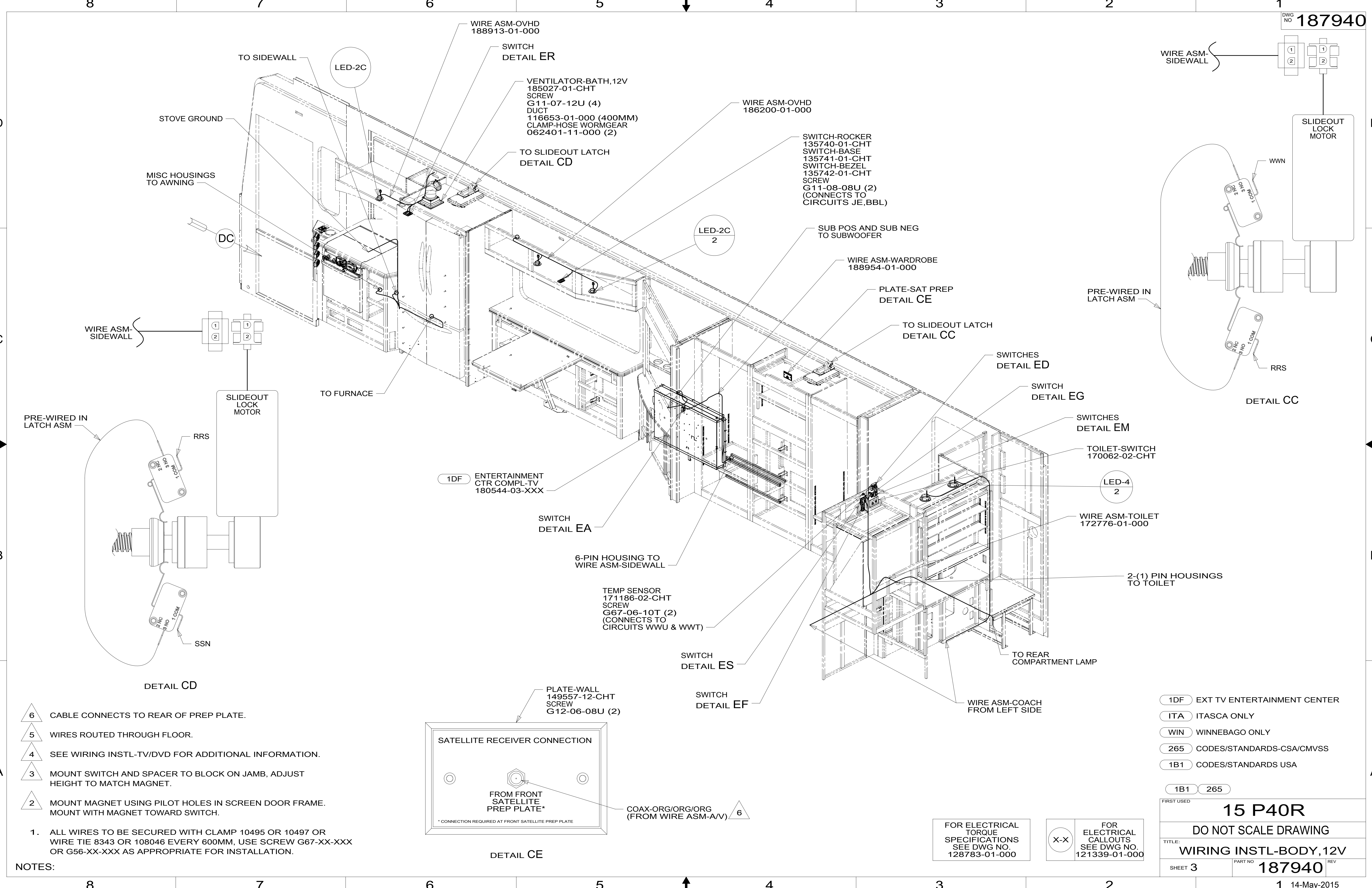
FOR
ELECTRICAL
CALLOUTS
SEE DWG NO.
121339-01-000

- 5 SEE LOAD CENTER/ATS ASM FOR ADDITIONAL INFORMATION.
- 4 SEE WIRING INSTL-TV/DVD FOR ADDITIONAL INFORMATION.
- 3 WIRE ASM-COACH PASSES THRU FLOOR HERE.
- 2 MOUNT LAMP SO THE TOP OF THE SHADE IS 150MM FROM BOTTOM OF OVHD CABINET.

1. ALL WIRES TO BE SECURED WITH CLAMP 10495 OR 10497 OR WIRE TIE 8343 OR 108046 EVERY 600MM, USE SCREW G67-XX-XXX OR G56-XX-XXX AS APPROPRIATE FOR INSTALLATION.

NOTES:

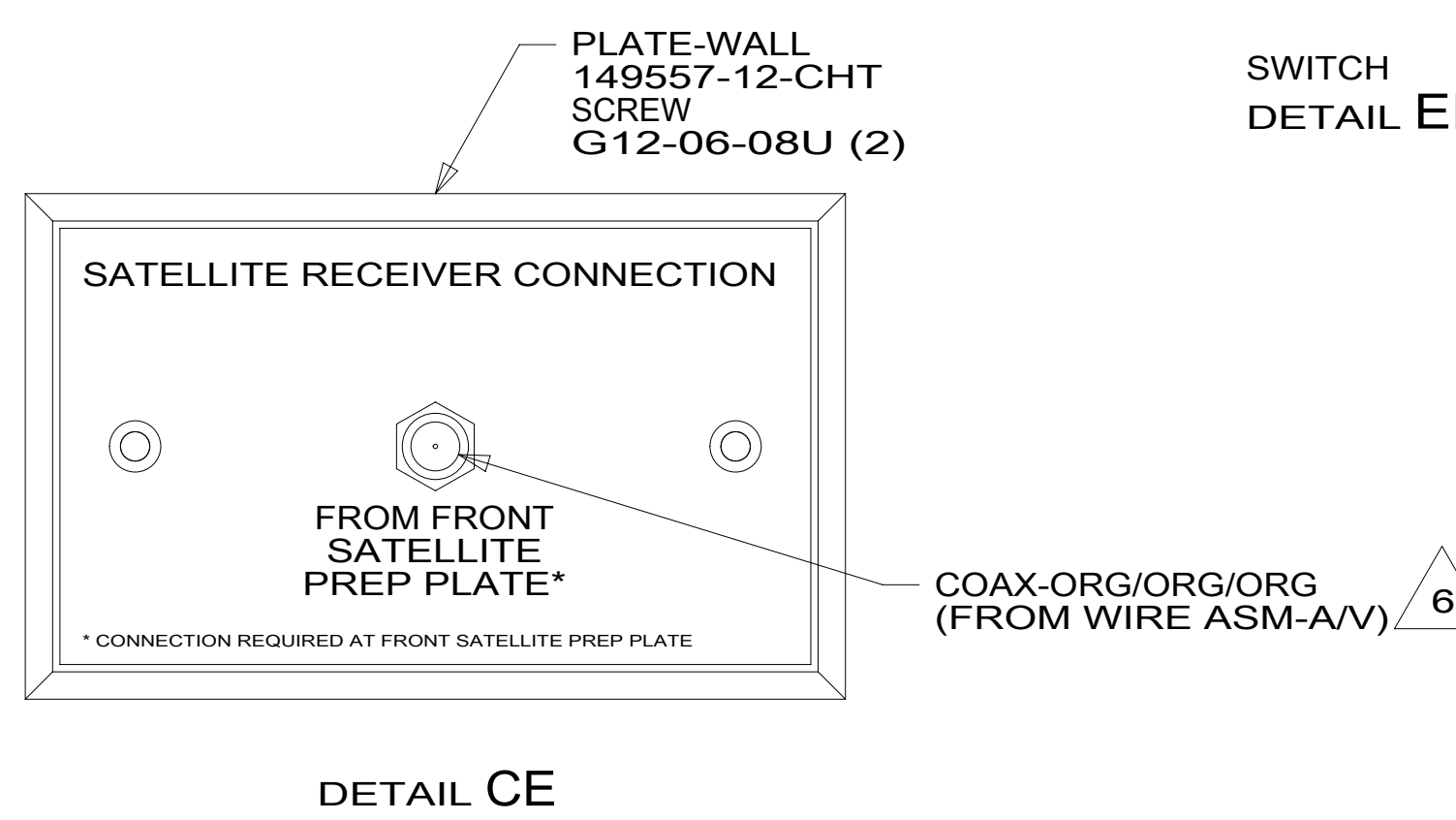
187940



- 6 CABLE CONNECTS TO REAR OF PREP PLATE.
- 5 WIRES ROUTED THROUGH FLOOR.
- 4 SEE WIRING INSTL-TV/DVD FOR ADDITIONAL INFORMATION.
- 3 MOUNT SWITCH AND SPACER TO BLOCK ON JAMB, ADJUST HEIGHT TO MATCH MAGNET.
- 2 MOUNT MAGNET USING PILOT HOLES IN SCREEN DOOR FRAME. MOUNT WITH MAGNET TOWARD SWITCH.

1. ALL WIRES TO BE SECURED WITH CLAMP 10495 OR 10497 OR WIRE TIE 8343 OR 108046 EVERY 600MM, USE SCREW G67-XX-XXX OR G56-XX-XXX AS APPROPRIATE FOR INSTALLATION.

NOTES:



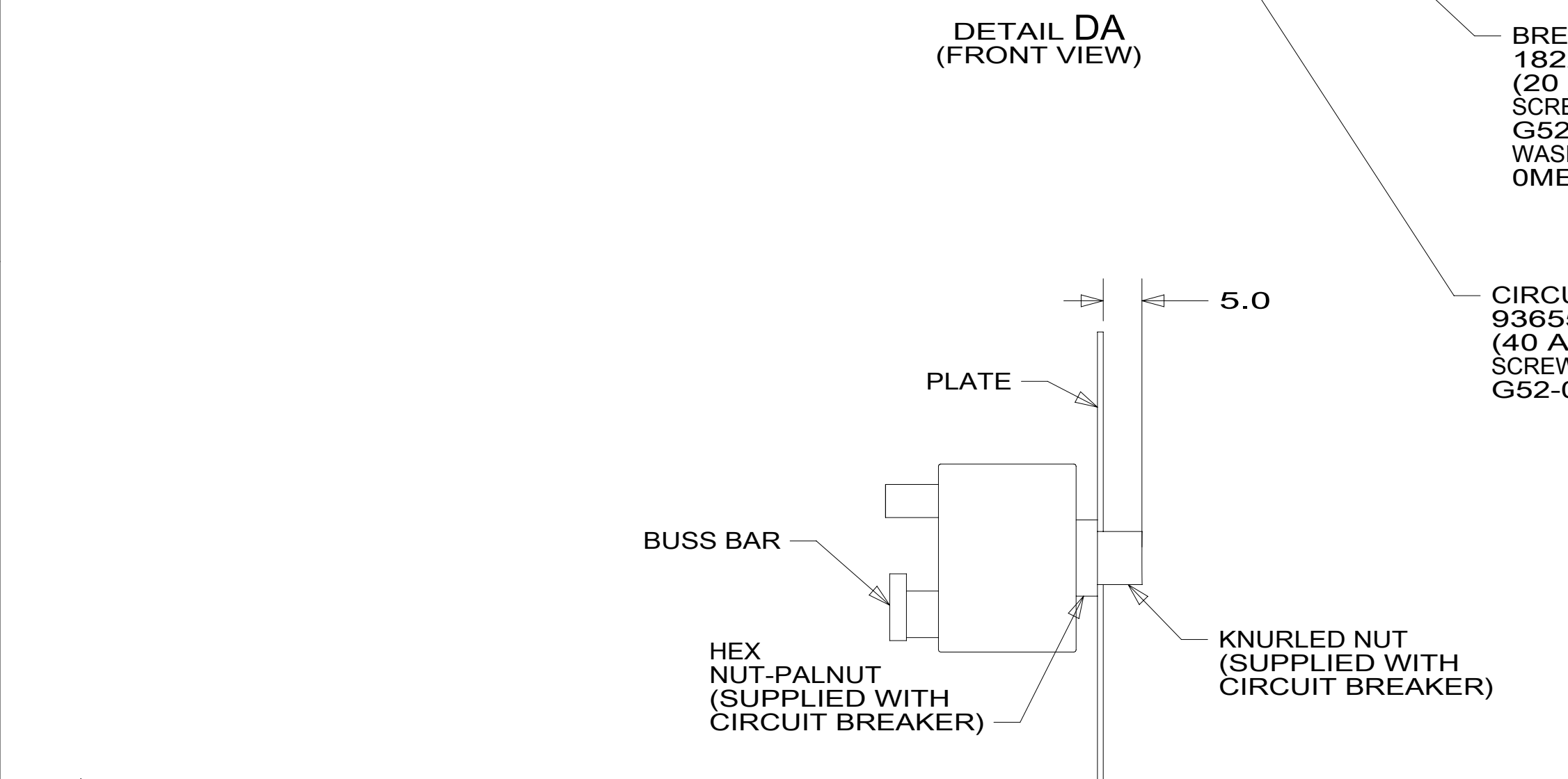
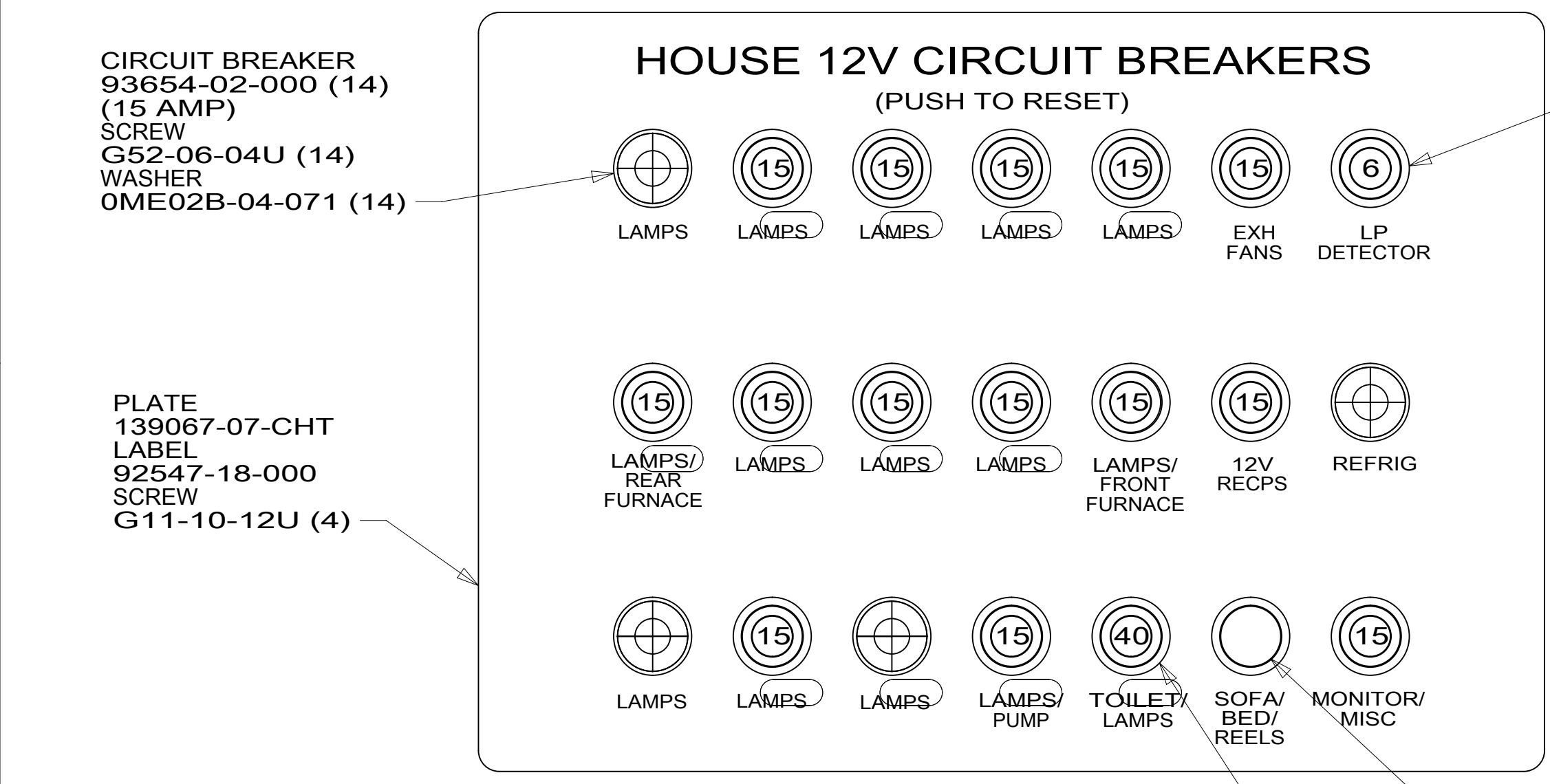
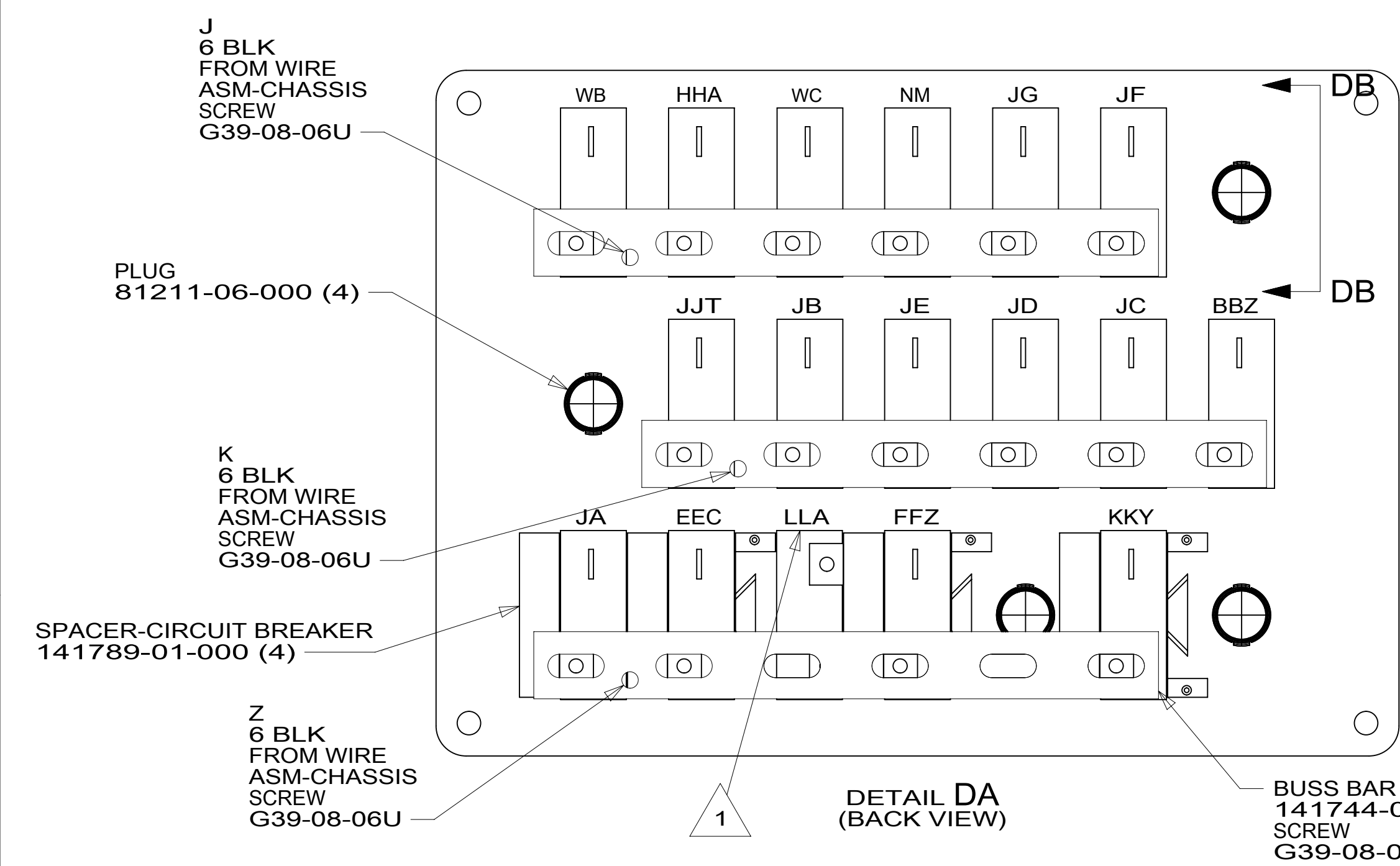
- 1DF EXT TV ENTERTAINMENT CENTER
- ITA ITASCA ONLY
- WIN WINNEBAGO ONLY
- 265 CODES/STANDARDS-CSA/CMVSS
- 1B1 CODES/STANDARDS USA

FIRST USED		15 P40R	
DO NOT SCALE DRAWING			
WIRING INSTL-BODY, 12V			
SHEET 3	PART NO	187940	
		REV 14-May-2015	

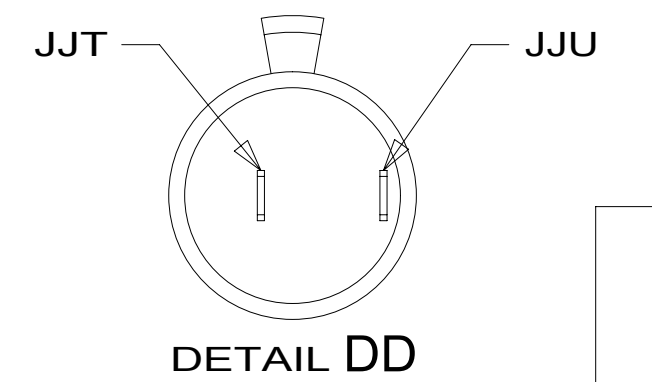
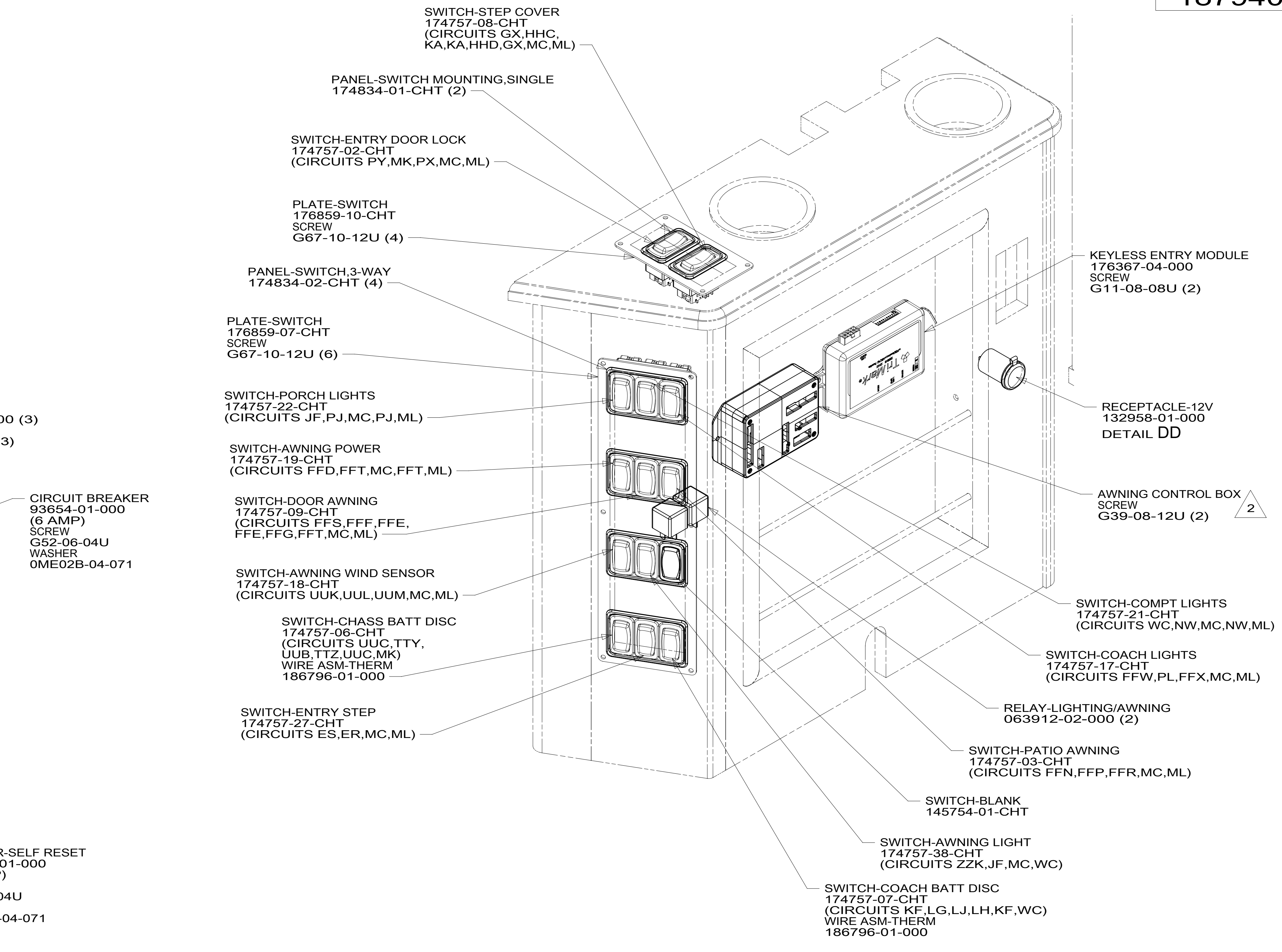
FOR ELECTRICAL TORQUE SPECIFICATIONS SEE DWG NO. 128783-01-000

FOR ELECTRICAL CALLOUTS SEE DWG NO. 121339-01-000

187940



NOTES:
 2 SEE AWNING INSTL FOR ADDITIONAL INFORMATION.
 1 CIRCUIT IS 8 AWG BLACK.

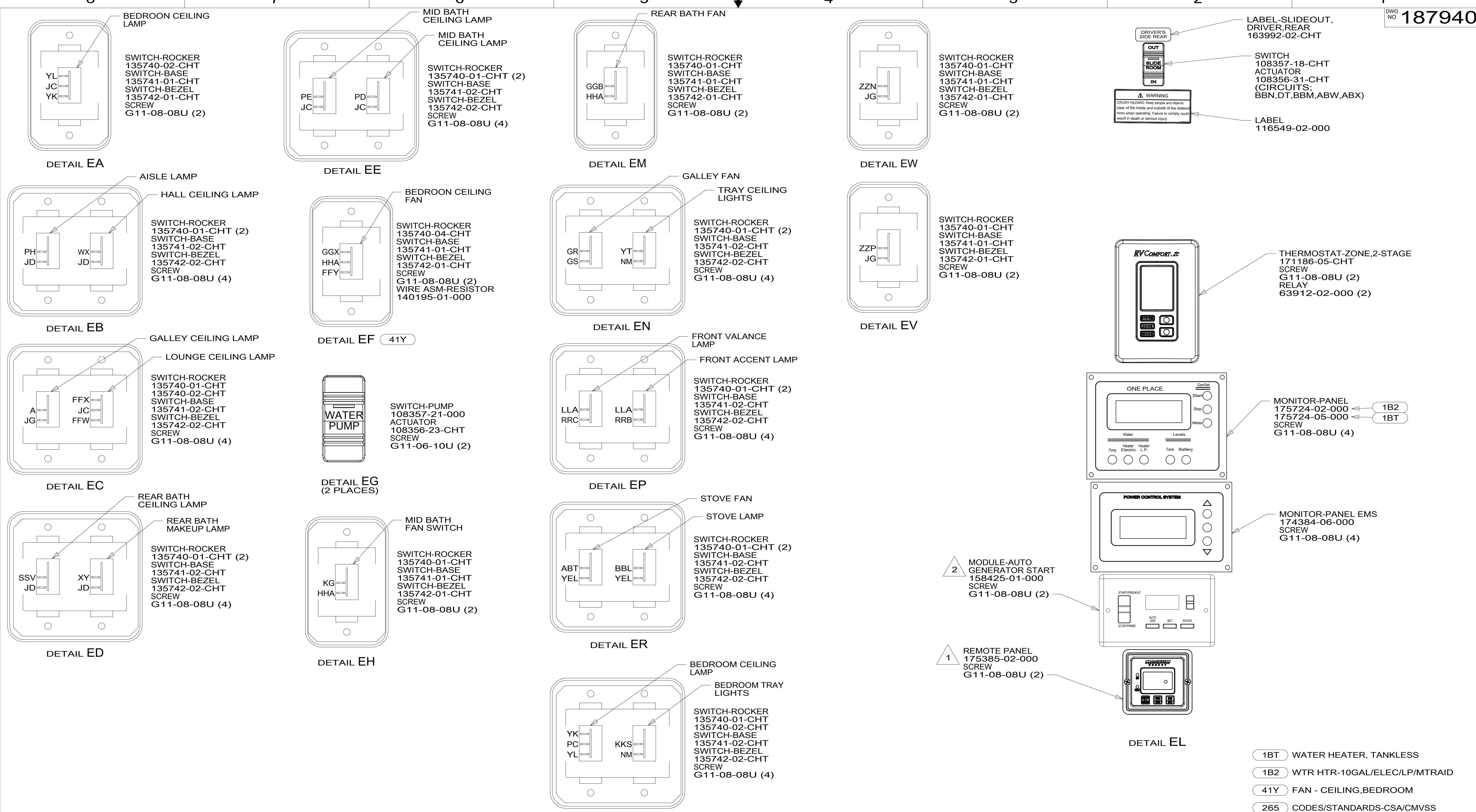


FOR ELECTRICAL TORQUE SPECIFICATIONS SEE DWG NO. 128783-01-000

FOR ELECTRICAL CALLOUTS SEE DWG NO. 121339-01-000

265	CODES/STANDARDS-CSA/CMVSS
1B1	CODES/STANDARDS USA
1B1	265
FIRST USED	
15 P40R	
DO NOT SCALE DRAWING	
WIRING INSTL-BODY, 12V	
SHEET 4	PART NO. 187940 REV
14-May-2015	

* 187940 * A



NOTES:

2 SET 'GEN TYPE' TO 'QD 6-8'
 SET 'SAFE TYPE' TO 'IGNITION'
 SET 'SP SENSE' TO 'AFTER'
 SEE OWNERS MANUAL FOR SETUP PROCEDURE.

1 SET 'BAT TYPE' TO 'AGM2'
 SET 'LBCO' TO '11VDC'
 SET 'BAT AHRS' TO '600 AH'
 SEE OWNERS MANUAL FOR SETUP PROCEDURE.

FOR ELECTRICAL TORQUE SPECIFICATIONS SEE DWG NO. 128783-01-000

FOR ELECTRICAL CALLOUTS SEE DWG NO. 121339-01-000

- 1BT WATER HEATER, TANKLESS
- 1B2 WTR HTR-10GAL/ELEC/LP/MTRAIID
- 41Y FAN - CEILING,BEDROOM
- 265 CODES/STANDARDS-CSA/CMVSS
- 1B1 CODES/STANDARDS USA

1B1 265

FIRST USED

15 P40R

DO NOT SCALE DRAWING

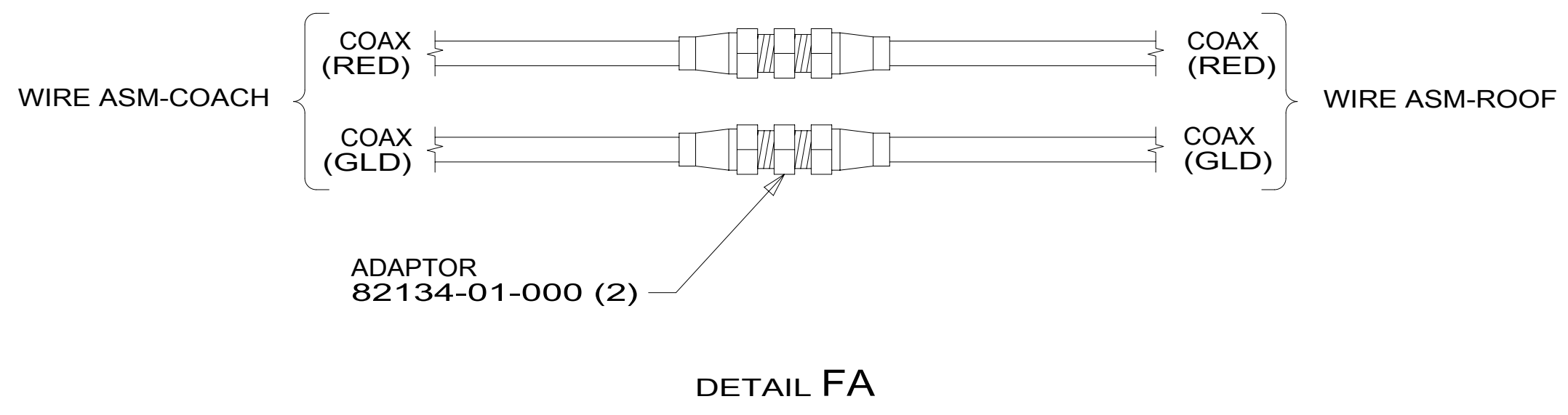
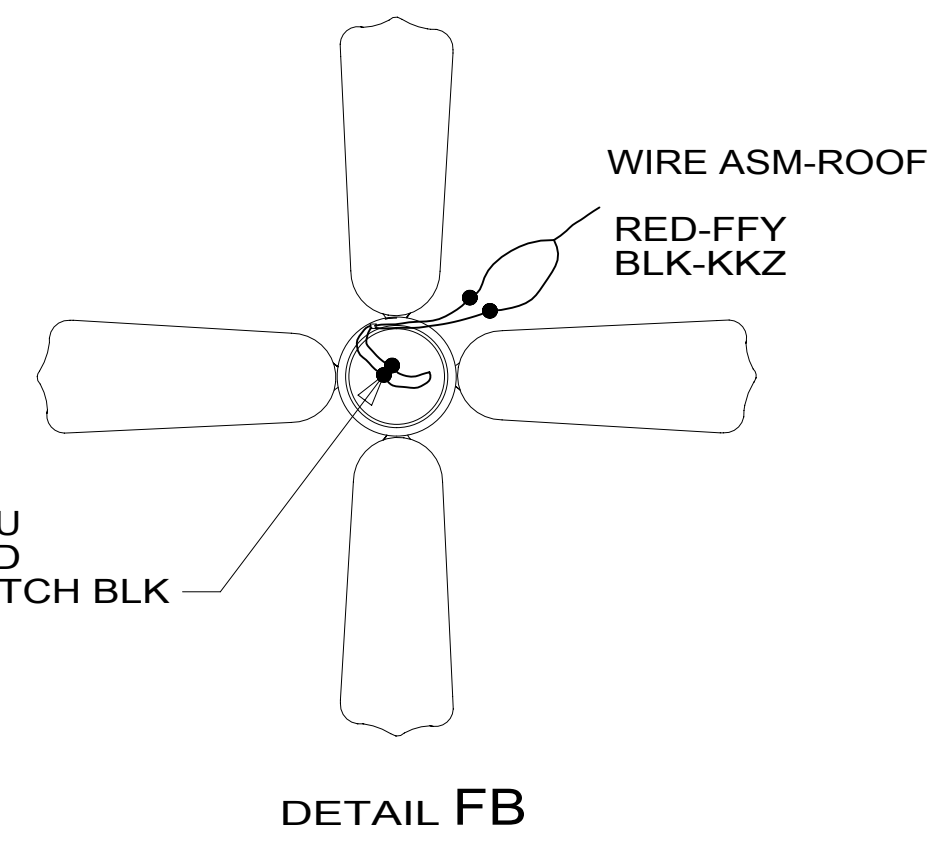
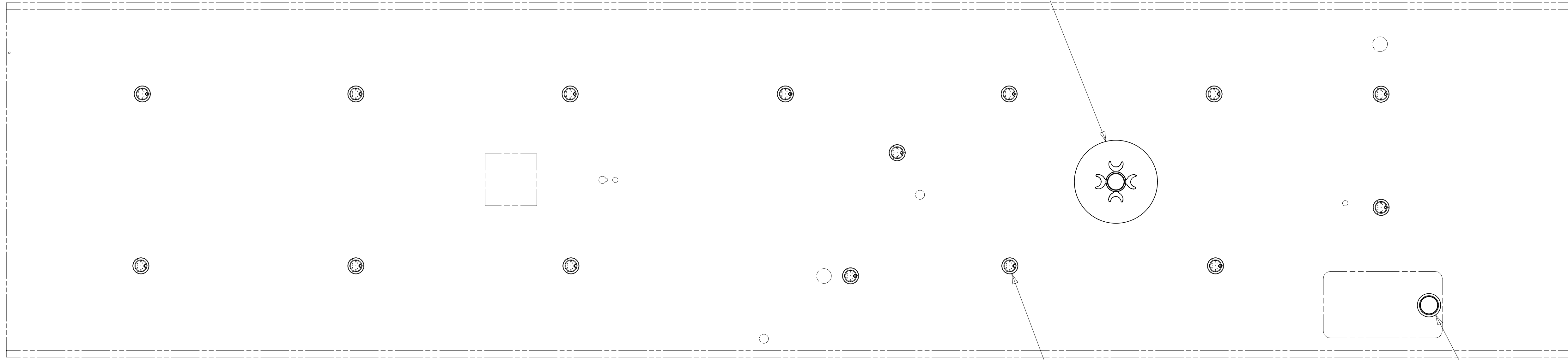
TITLE: **WIRING INSTL-BODY, 12V**

SHEET 5 PART NO **187940** REV

14-May-2015

187940

- 41Y
- 2
- 3
- FAN 188368-01-CHT
- SCREW G11-10-16B (3)
- CONNECTOR 58028-01-000 (2)
- DETAIL FB



- NOTES:
- 3 CENTER FAN OVER 25MM HOLE IN ROOF.
 - 2 APPLY LOCTITE P/N 62917-06-000 TO FAN BLADE MOUNTING NUT THREADS.
 - 1 SEE WIRING INSTL-TV/DVD FOR ADDITIONAL INFORMATION.

FOR ELECTRICAL TORQUE SPECIFICATIONS SEE DWG NO. 128783-01-000

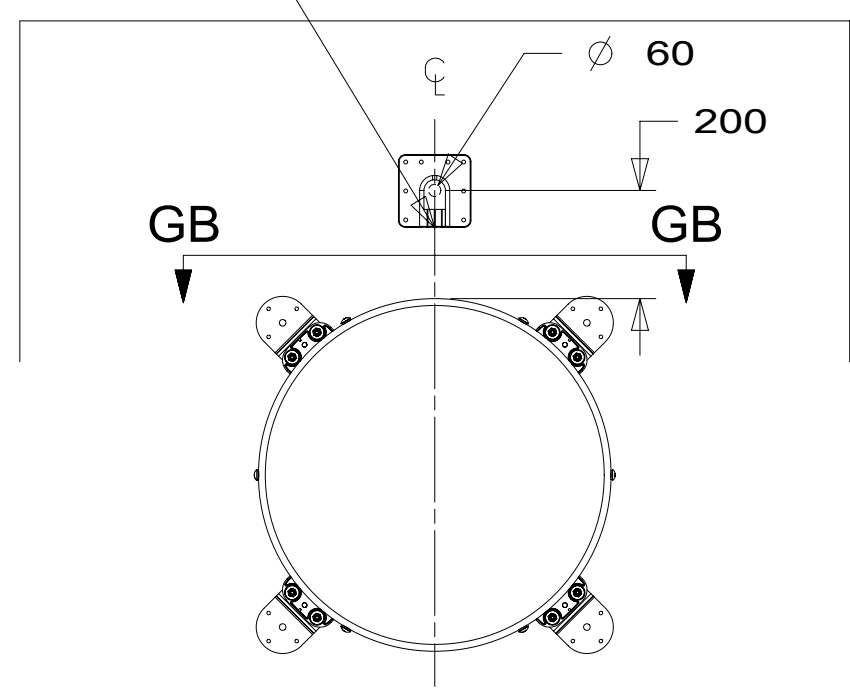
FOR ELECTRICAL CALLOUTS SEE DWG NO. 121339-01-000

- 41Y FAN - CEILING,BEDROOM
- 265 CODES/STANDARDS-CSA/CMVSS
- 1B1 CODES/STANDARDS USA

FIRST USED	15 P40R	
DO NOT SCALE DRAWING		
TITLE: WIRING INSTL-BODY, 12V		
SHEET 6	PART NO 187940	REV
1 14-May-2015		

187940

THE SATELLITE DISH WIRE CONNECTIONS ARE TO BE PLACED ON THE CENTERLINE OF THE MOTORHOME FACING FORWARD

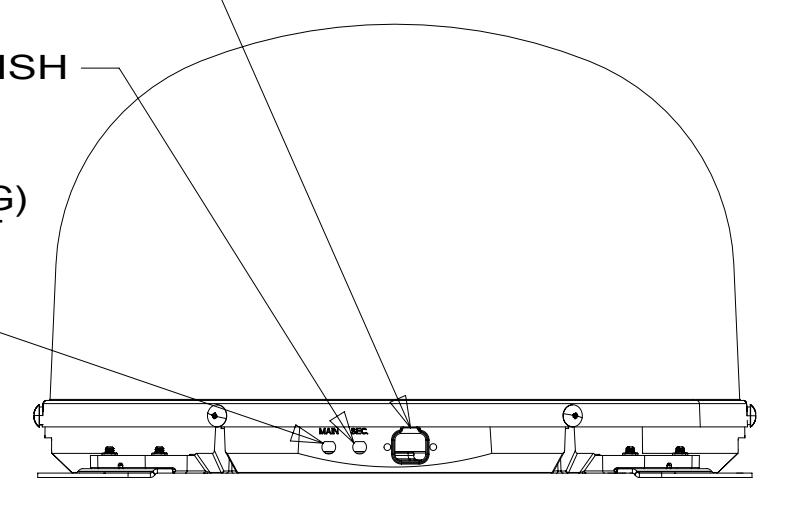


DETAIL GA 2

CONNECT 2-PIN HOUSING FROM ROOF ASM TO SATELLITE DISH HERE AND ADD CONVOLUTED TUBING

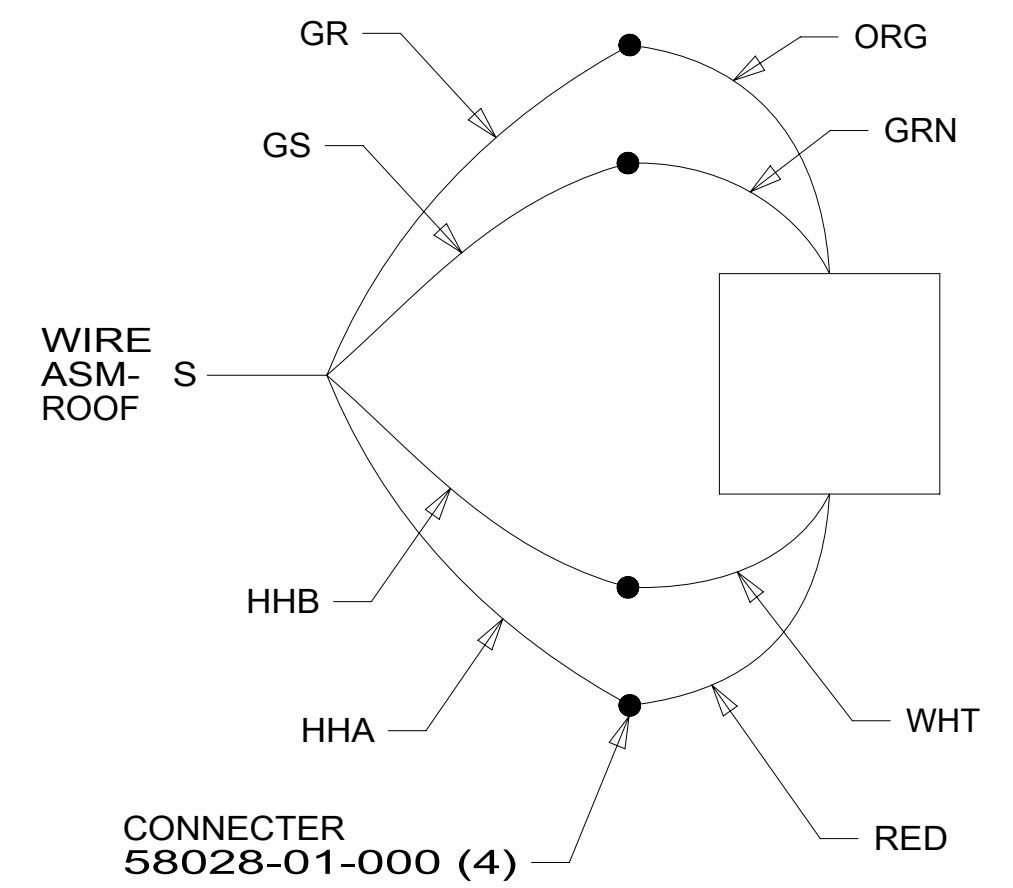
CONNECT CABLE ASM COAX (ORG-2) FROM ROOF ASM TO SEC INPUT ON SATELLITE DISH

CONNECT CABLE ASM COAX (ORG) FROM ROOF ASM TO MAIN INPUT ON SATELLITE DISH



VIEW GB-GB

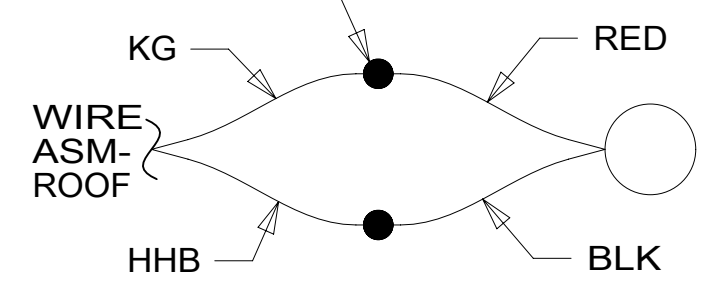
GJ



DETAIL GF

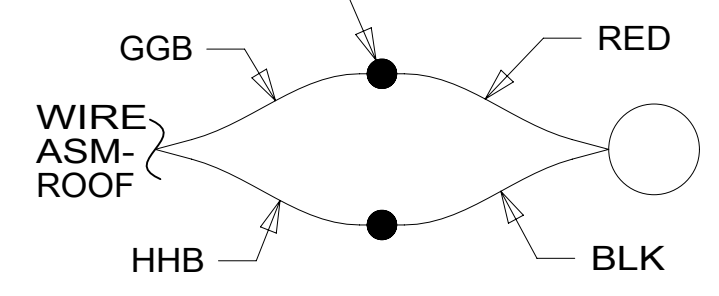
WIRING
DETAIL GF

CONNECTOR 58028-01-000 (2)

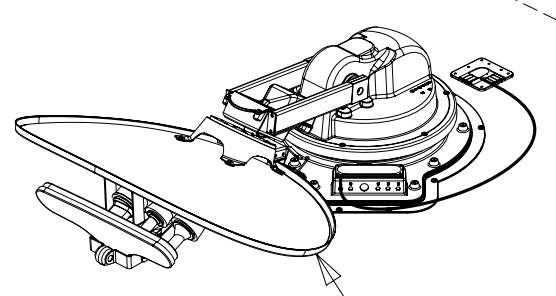


DETAIL GG

CONNECTOR 58028-01-000 (2)



DETAIL GH



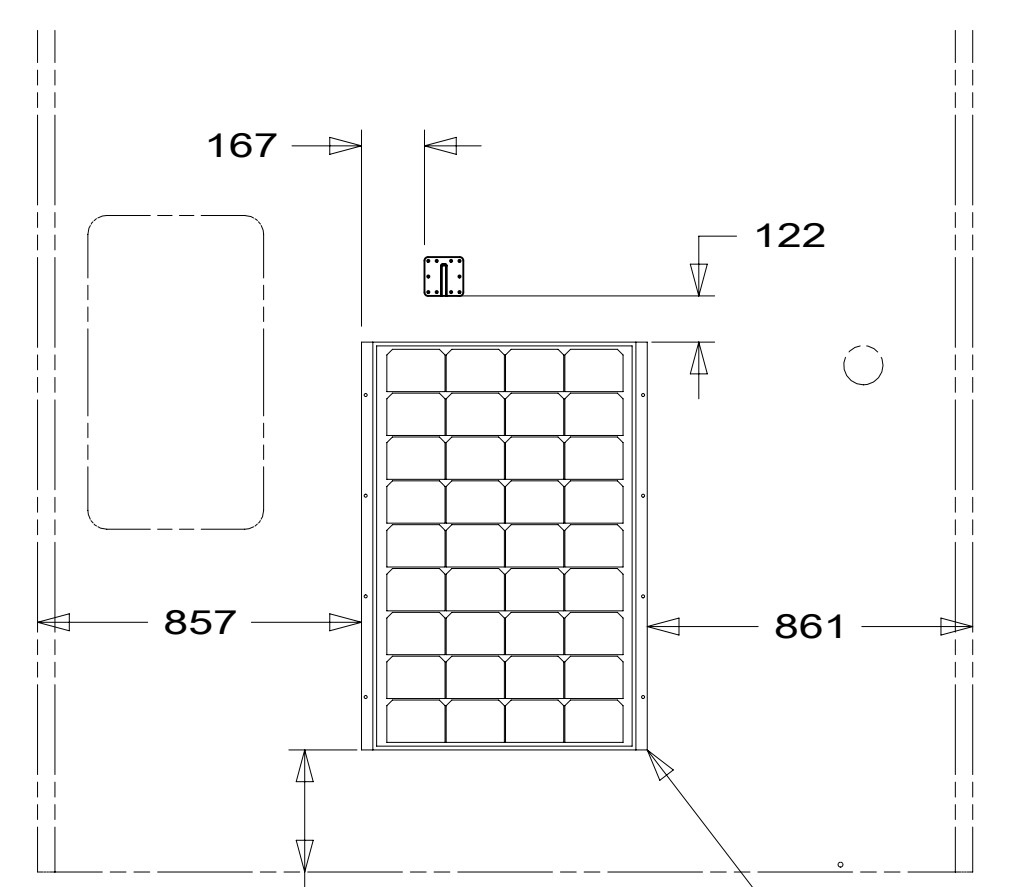
DA-4 783 1
DETAIL GC

DI-3 48P 1
DETAIL GA

ANT-5 193 1

WIRING
DETAIL GG

WIRING
DETAIL GH



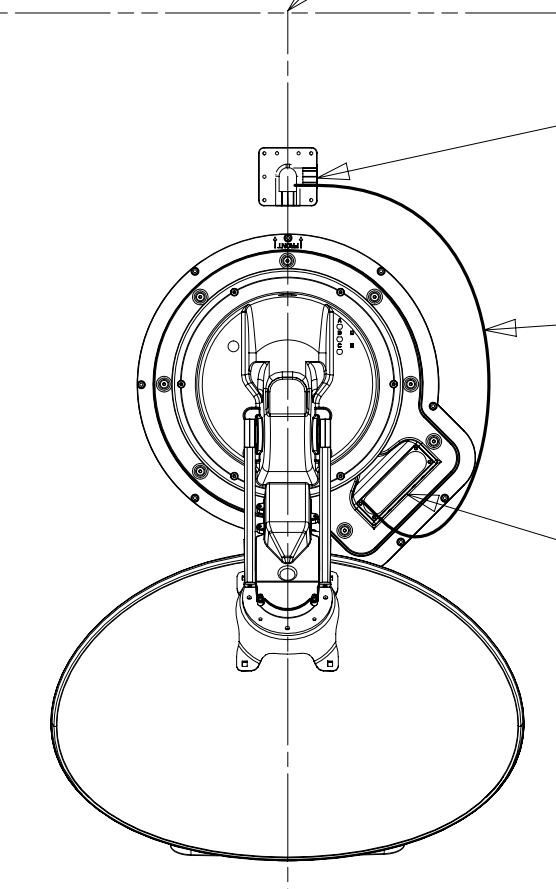
DETAIL GJ

THE SATELLITE DISH AND WIRE CONNECTIONS ARE TO BE PLACED ON THE CENTERLINE OF THE MOTORHOME FACING FORWARD.

SEPARATE CABLES AND INSTALL WIRE COVER OVER HOLE IN ROOF ASM WITH CABLES EXITING ON PASSENGERS SIDE.

WHEN APPLYING ROOF SEALANT TO SATELLITE DISH, PLACE ROOF SEALANT HERE (APPROXIMATELY 75MM WIDE) AND PUSH THE CABLES INTO THE SEALANT TO STABILIZE THEM.

CONNECT CABLE ASM-COAX FROM ROOF ASM TO COAX CABLES ON SATELLITE DISH AND CONNECT 10' CABLE-DATA FROM ROOF ASM TO DATA CABLE FROM SATELLITE DISH AND PLACE ALL CONNECTIONS BACK INTO ROOF ASM.



DETAIL GC

- 282 SOLAR PANEL - 100 WATT
- 783 SATELLITE HD TV SYSTEM AUTOC
- 193 TV ANTENNA-AMPLIFIED SYSTEM
- 48P SAT TV SYSTEM IN-MOTION
- 29Q SOLAR PANEL - 10 WATT
- 25D STEREO SYSTEM/W/CD/DVD REAR
- 1D3 ENTERTAIN CENTR/EXT TV-DVD
- 265 CODES/STANDARDS-CSA/CMVSS
- 1B1 CODES/STANDARDS USA

1B1	265
FIRST USED	
15 P40R	
DO NOT SCALE DRAWING	
TITLE: WIRING INSTL-BODY, 12V	
SHEET 7	PART NO. 187940 REV

FOR ELECTRICAL TORQUE SPECIFICATIONS SEE DWG NO. 128783-01-000

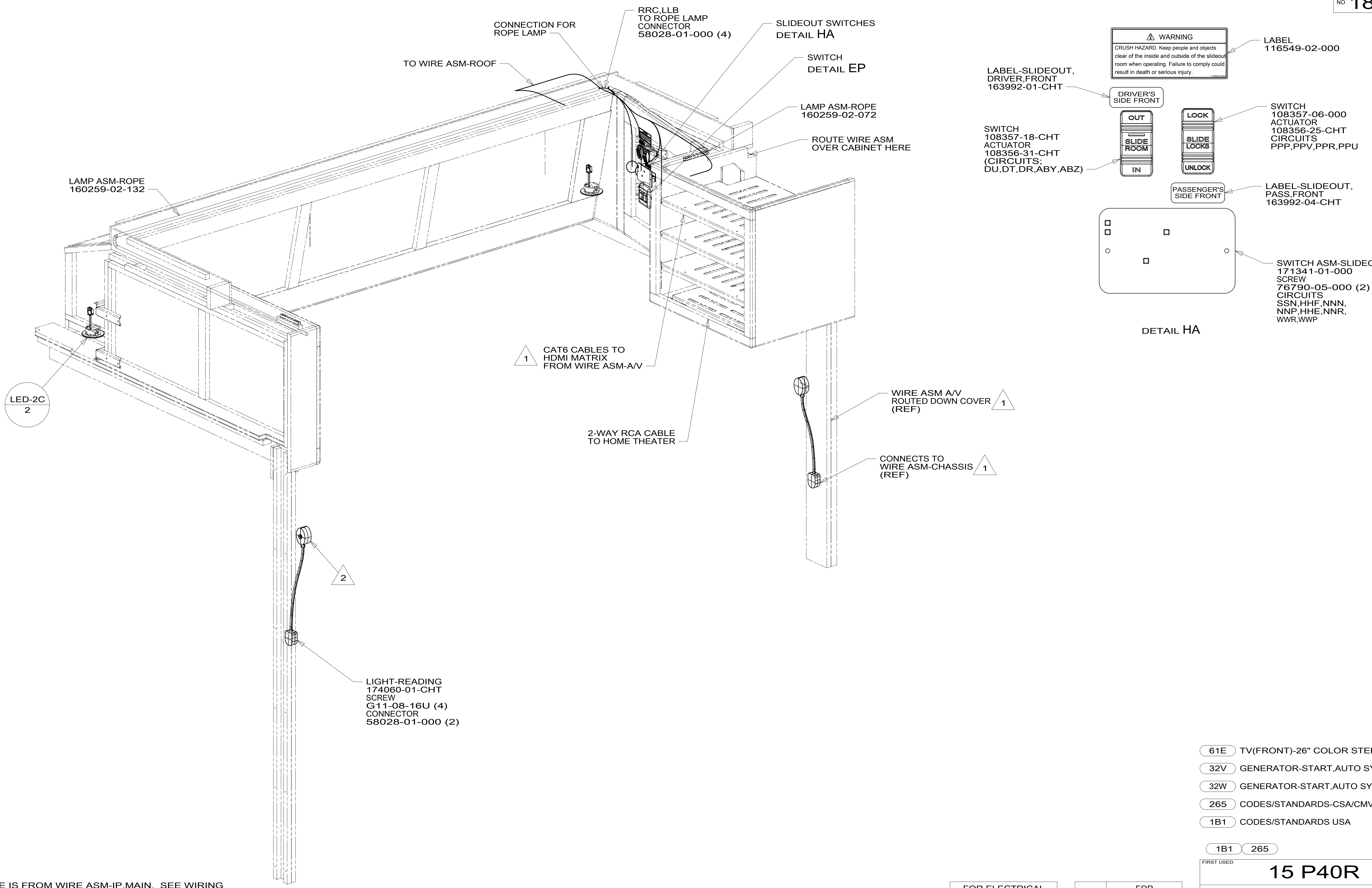
FOR ELECTRICAL CALLOUTS SEE DWG NO. 121339-01-000

2 REMOVE ALL SHIPPING RESTRAINTS AND FIRMLY INSERT THE SUPPLIED PLUGS INTO THE APPROPRIATE SIZED HOLES AS SPECIFIED IN THE INSTALLATION PROCESS.

1 SEE MANUFACTURER'S INSTALLATION FOR ADDITIONAL INFORMATION.

NOTES:

187940



NOTES:
 2 WIRE IS FROM WIRE ASM-IP,MAIN. SEE WIRING INSTL-FRONT END FOR ADDITIONAL INFORMATION.
 1 SEE WIRING INSTL-CHASSIS FOR ADDITIONAL INFORMATION.

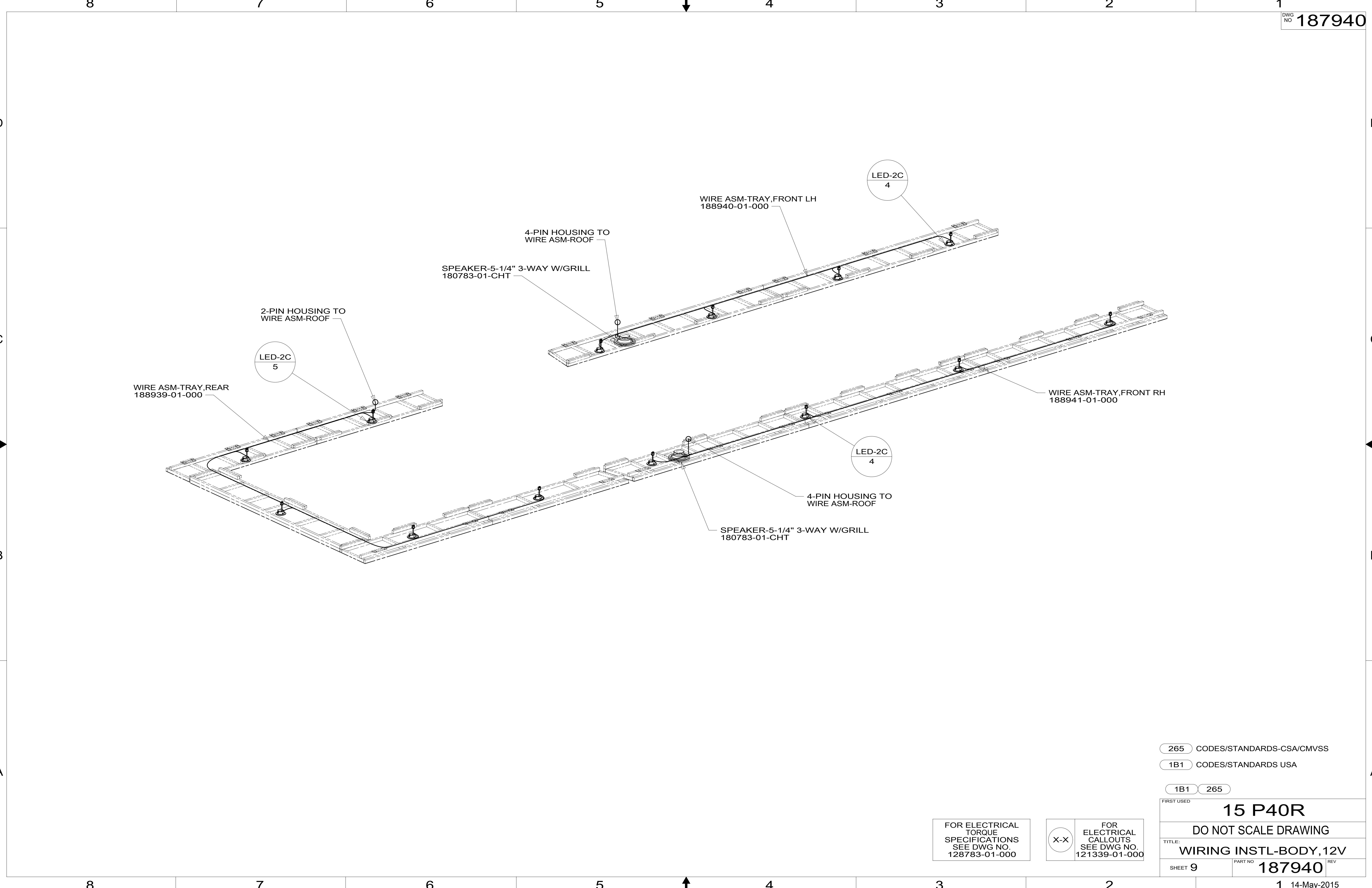
FOR ELECTRICAL TORQUE SPECIFICATIONS SEE DWG NO. 128783-01-000

FOR ELECTRICAL CALLOUTS SEE DWG NO. 121339-01-000

- 61E TV(FRONT)-26" COLOR STEREO
- 32V GENERATOR-START,AUTO SYS W/O
- 32W GENERATOR-START,AUTO SYSTEM
- 265 CODES/STANDARDS-CSA/CMVSS
- 1B1 CODES/STANDARDS USA

1B1	265
FIRST USED	
15 P40R	
DO NOT SCALE DRAWING	
TITLE: WIRING INSTL-BODY, 12V	
SHEET 8	PART NO. 187940 REV
14-May-2015	

187940



WIRE ASM-TRAY,REAR
188939-01-000

LED-2C
5

2-PIN HOUSING TO
WIRE ASM-ROOF

SPEAKER-5-1/4" 3-WAY W/GRILL
180783-01-CHT

4-PIN HOUSING TO
WIRE ASM-ROOF

WIRE ASM-TRAY,FRONT LH
188940-01-000

LED-2C
4

LED-2C
4

SPEAKER-5-1/4" 3-WAY W/GRILL
180783-01-CHT

4-PIN HOUSING TO
WIRE ASM-ROOF

WIRE ASM-TRAY,FRONT RH
188941-01-000

265 CODES/STANDARDS-CSA/CMVSS

1B1 CODES/STANDARDS USA

1B1 265

FIRST USED
15 P40R

DO NOT SCALE DRAWING

TITLE:
WIRING INSTL-BODY, 12V

SHEET 9 PART NO **187940** REV

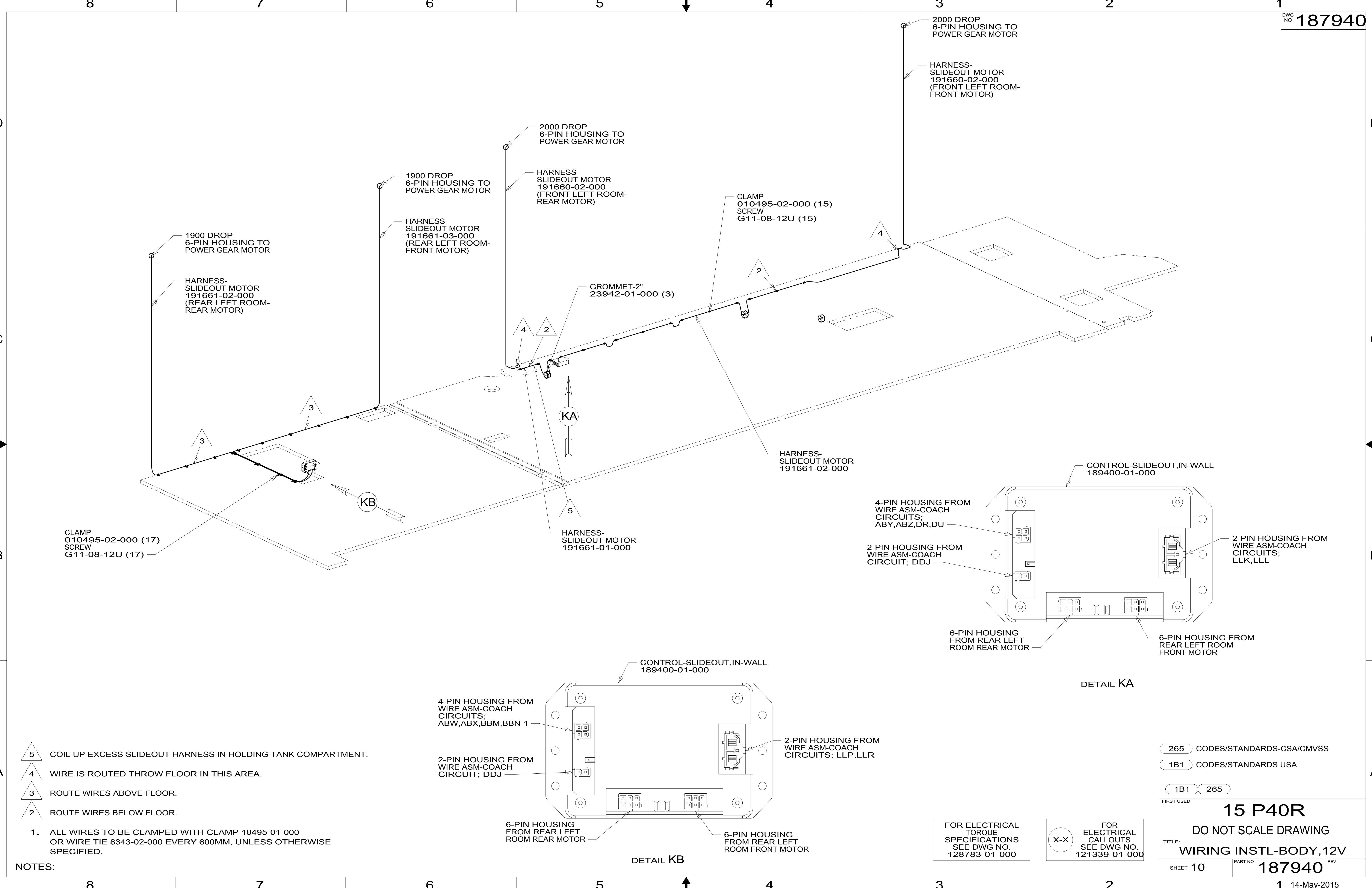
1 14-May-2015

FOR ELECTRICAL
TORQUE
SPECIFICATIONS
SEE DWG NO.
128783-01-000

FOR
ELECTRICAL
CALLOUTS
SEE DWG NO.
121339-01-000

X-X

187940



CLAMP
010495-02-000 (17)
SCREW
G11-08-12U (17)

4-PIN HOUSING FROM
WIRE ASM-COACH
CIRCUITS;
ABY,ABZ,DR,DU

2-PIN HOUSING FROM
WIRE ASM-COACH
CIRCUIT; DDJ

CONTROL-SLIDEOUT,IN-WALL
189400-01-000

2-PIN HOUSING FROM
WIRE ASM-COACH
CIRCUITS;
LLK,LLL

6-PIN HOUSING
FROM REAR LEFT
ROOM REAR MOTOR

6-PIN HOUSING FROM
REAR LEFT ROOM
FRONT MOTOR

DETAIL KA

4-PIN HOUSING FROM
WIRE ASM-COACH
CIRCUITS;
ABW,ABX,BBM,BBN-1

2-PIN HOUSING FROM
WIRE ASM-COACH
CIRCUIT; DDJ

2-PIN HOUSING FROM
WIRE ASM-COACH
CIRCUITS; LLP,LLR

6-PIN HOUSING
FROM REAR LEFT
ROOM REAR MOTOR

6-PIN HOUSING
FROM REAR LEFT
ROOM FRONT MOTOR

DETAIL KB

- 5 COIL UP EXCESS SLIDEOUT HARNESS IN HOLDING TANK COMPARTMENT.
- 4 WIRE IS ROUTED THROU FLOOR IN THIS AREA.
- 3 ROUTE WIRES ABOVE FLOOR.
- 2 ROUTE WIRES BELOW FLOOR.

1. ALL WIRES TO BE CLAMPED WITH CLAMP 10495-01-000 OR WIRE TIE 8343-02-000 EVERY 600MM, UNLESS OTHERWISE SPECIFIED.

NOTES:

FOR ELECTRICAL
TORQUE
SPECIFICATIONS
SEE DWG NO.
128783-01-000

FOR
ELECTRICAL
CALLOUTS
SEE DWG NO.
121339-01-000

- 265 CODES/STANDARDS-CSA/CMVSS
- 1B1 CODES/STANDARDS USA

FIRST USED		15 P40R	
DO NOT SCALE DRAWING			
WIRING INSTL-BODY, 12V			
SHEET 10	PART NO	187940	
		REV	

187940