



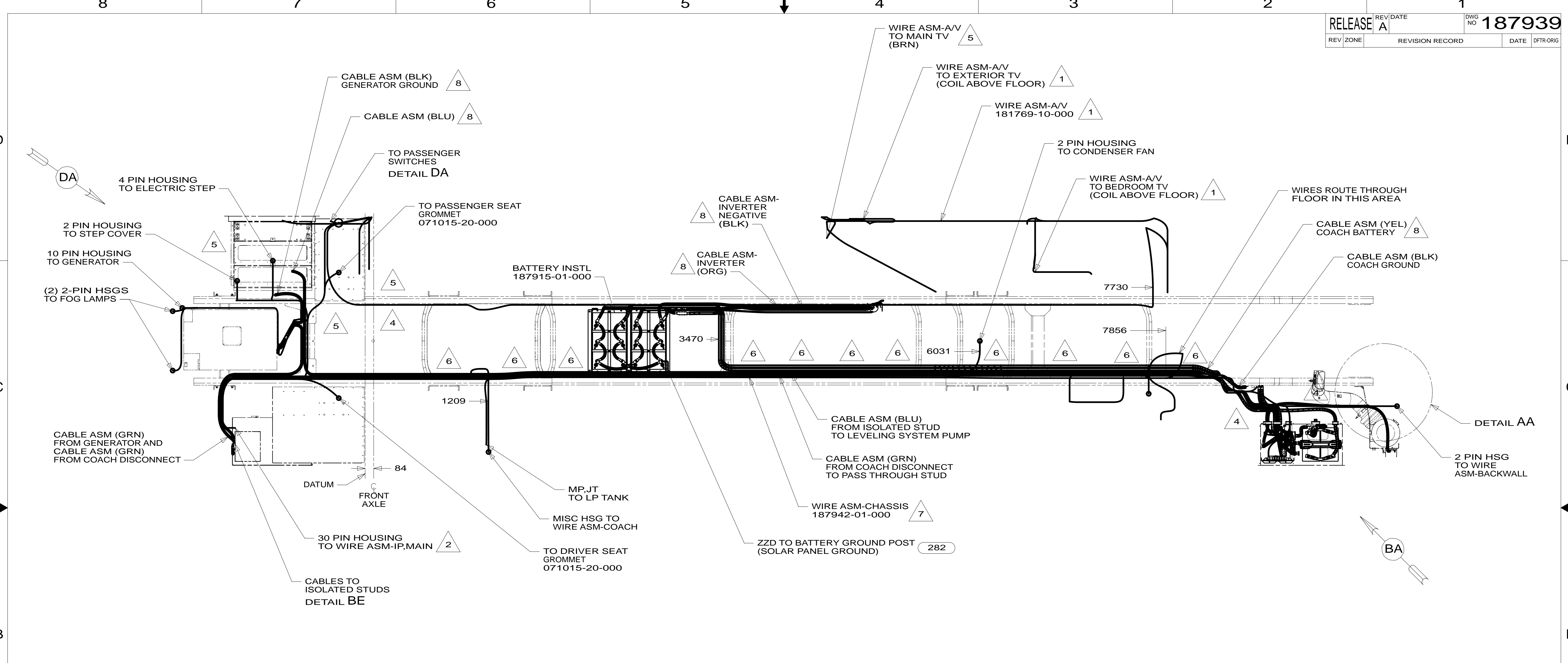
DANGER

Danger of electrical shock, burns or death. Always remove all power sources before attempting any repair, service or diagnostic work. Power can be present from shore power, generator, inverter or battery. All power sources must be disabled and secured before performing any service.

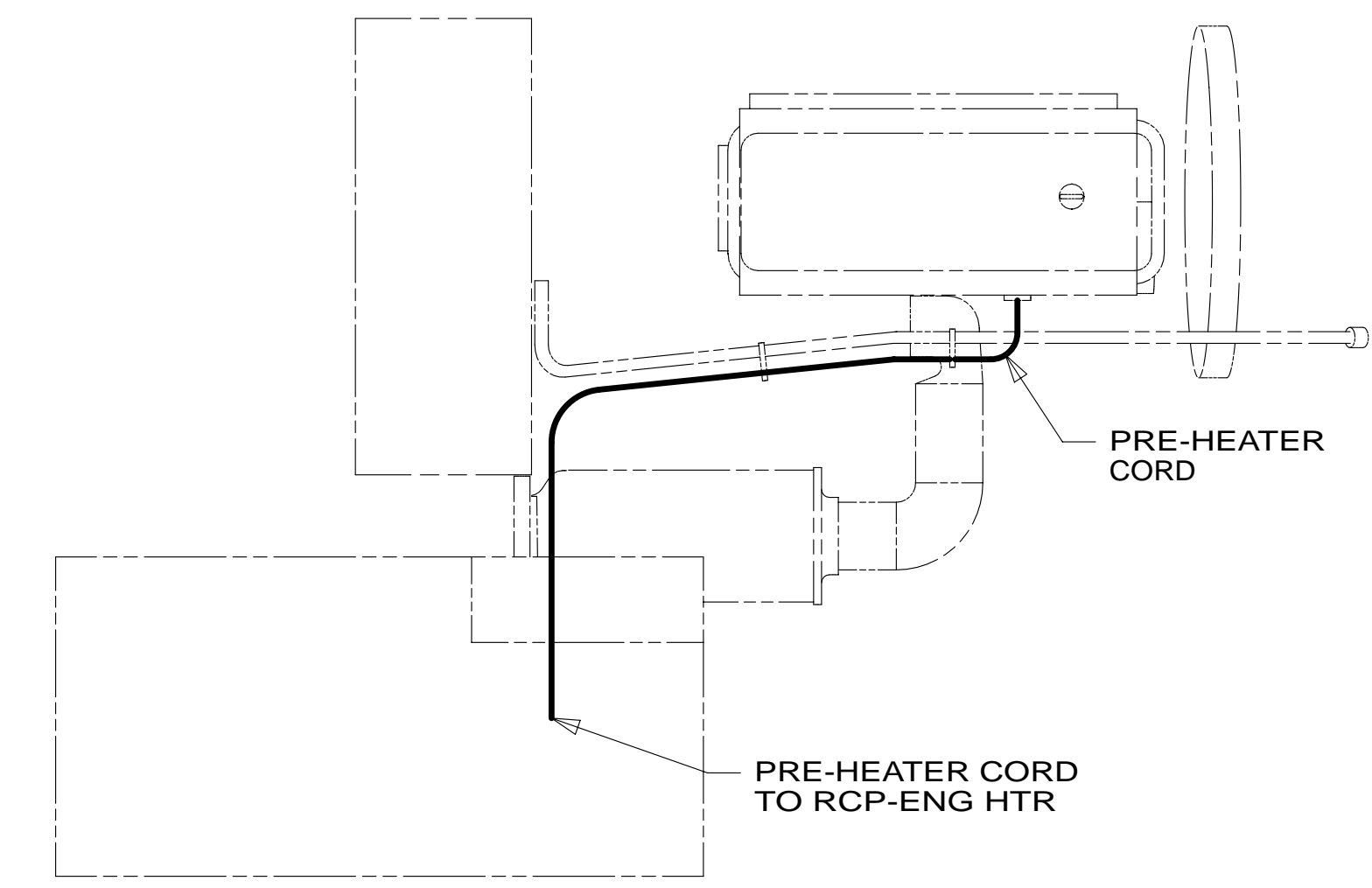


CAUTION

If you lack the skills, tools or equipment to perform diagnostic or repair work leave such work to an authorized Winnebago Industries dealer or other qualified shop.



- 8 SEE BATTERY INSTL FOR ADDITIONAL INFORMATION
- 7 REST WIRE IN FRAME RAIL WHEN APPLICABLE.
- 6 CLAMP 83610-01-000, SCREW G39-08-12U
- 5 CLAMP 10497-03-000, SCREW G39-08-12U
- 4 USE TIE-WIRE 8343-04-000 TO SECURE WIRES TO FLOOR SUPPORT FRAME AT LEAST ONCE EVERY 600MM.
- 3 SECURE CORD AWAY FROM ALL MOVING PARTS AND EXHAUST WITH WIRE-TIE 93147-01-000 AS REQUIRED
- 2 SEE WIRING INSTL-FRONT END FOR ADDITIONAL INFORMATION.
- 1 SEE SHEET 5 FOR ADDITIONAL INFORMATION.



- 282 SOLAR PANEL - 100 WATT
- 265 CODES/STANDARDS-CSA/CMVSS
- 1B1 CODES/STANDARDS USA
- 1B1 265

| | | | |
|------------------------------------|--------------------------------------|---|--|
| WINNEBAGO | | COPYRIGHT 2014 WINNEBAGO INDUSTRIES, INC. | |
| DFTR | ORIG. DATE | 15 P40R | |
| CHKR | ALL DIMENSIONS ARE IN MILLIMETERS | | |
| P.E. | FIRST USED | | |
| M.E. | | | |
| DSNR | | | |
| UNSPECIFIED TOLERANCES ARE: | | MATERIAL: | |
| WHOLE DIM (X) | : 3 | | |
| ONE-PLACE (X.X) | : 1.5 | | |
| TWO-PLACE (X.XX) | : 0.50 | | |
| ANGLE | : 1° | | |
| THIRD ANGLE PROJECTION | | | |
| DO NOT SCALE DRAWING | | REFER TO ES0018 FOR FASTENER TIGHTENING GUIDELINES | |
| TITLE: WIRING INSTL-CHASSIS | | | |
| SHEET 1 OF 5 | PART NO 187939 | REV | |
| REF: | 1 | 17-Jan-2014 | |

FOR ELECTRICAL TORQUE SPECIFICATIONS SEE DWG NO. 128783-01-000

X-X FOR ELECTRICAL CALLOUTS SEE DWG NO. 121339-01-000

* 187939 A

8 7 6 5 4 3 2 1

D

D

C

C

B

B

A

A

RELAY
063912-02-000

LABEL
98379-08-000

PANEL-CLOSEOUT
175347-06-CHT
SCREW
G11-08-12U (4)

CIRCUIT BREAKERS
DETAIL CA

CB

PANEL-CLOSEOUT,
ELECTRICAL
175347-02-CHT (2)
SCREW
G39-10-12U (4)

LABEL
98379-04-000

LABEL
98379-09-000

CRISIS MANUFACTURER'S
ELECTRICAL COMPONENTS
& NEAR FUSE PANEL
UNDER LEFT PANEL
VALANCE AREA

BATTERY MODE
SOLENOID AND
RELAYS

SOL-DETECT
CONTROLLERS

CHASSIS
BATTERIES
(REF)

FUSE BLOCK
(CHASSIS SUPPLIED)
(REF)

FREIGHTLINER
STARTER CABLE

VIEW BA

8 7 6 5 4 3 2 1

265 CODES/STANDARDS-CSA/CMVSS

1B1 CODES/STANDARDS USA

1B1 265

FIRST USED
15 P40R

DO NOT SCALE DRAWING

TITLE:
WIRING INSTL-CHASSIS

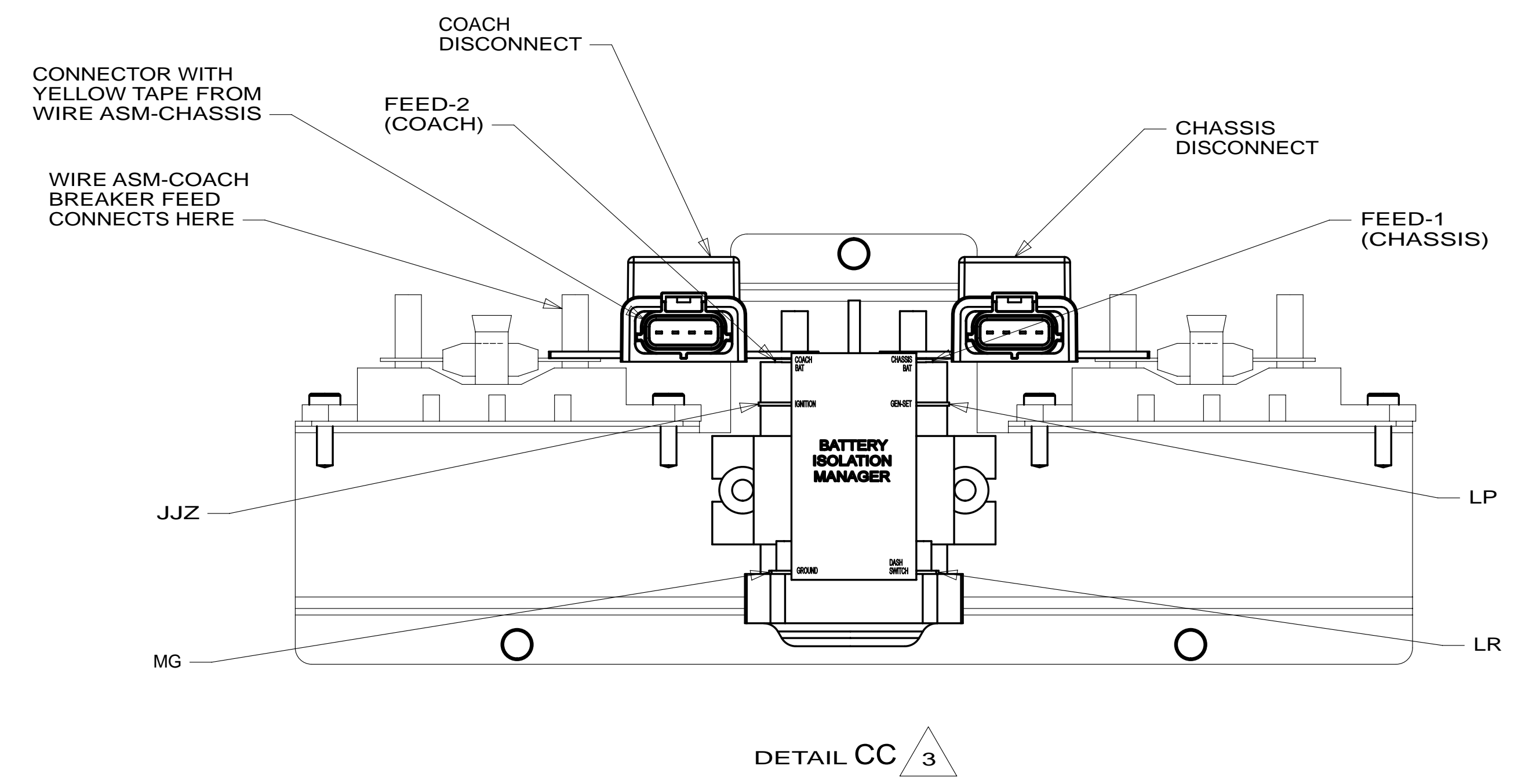
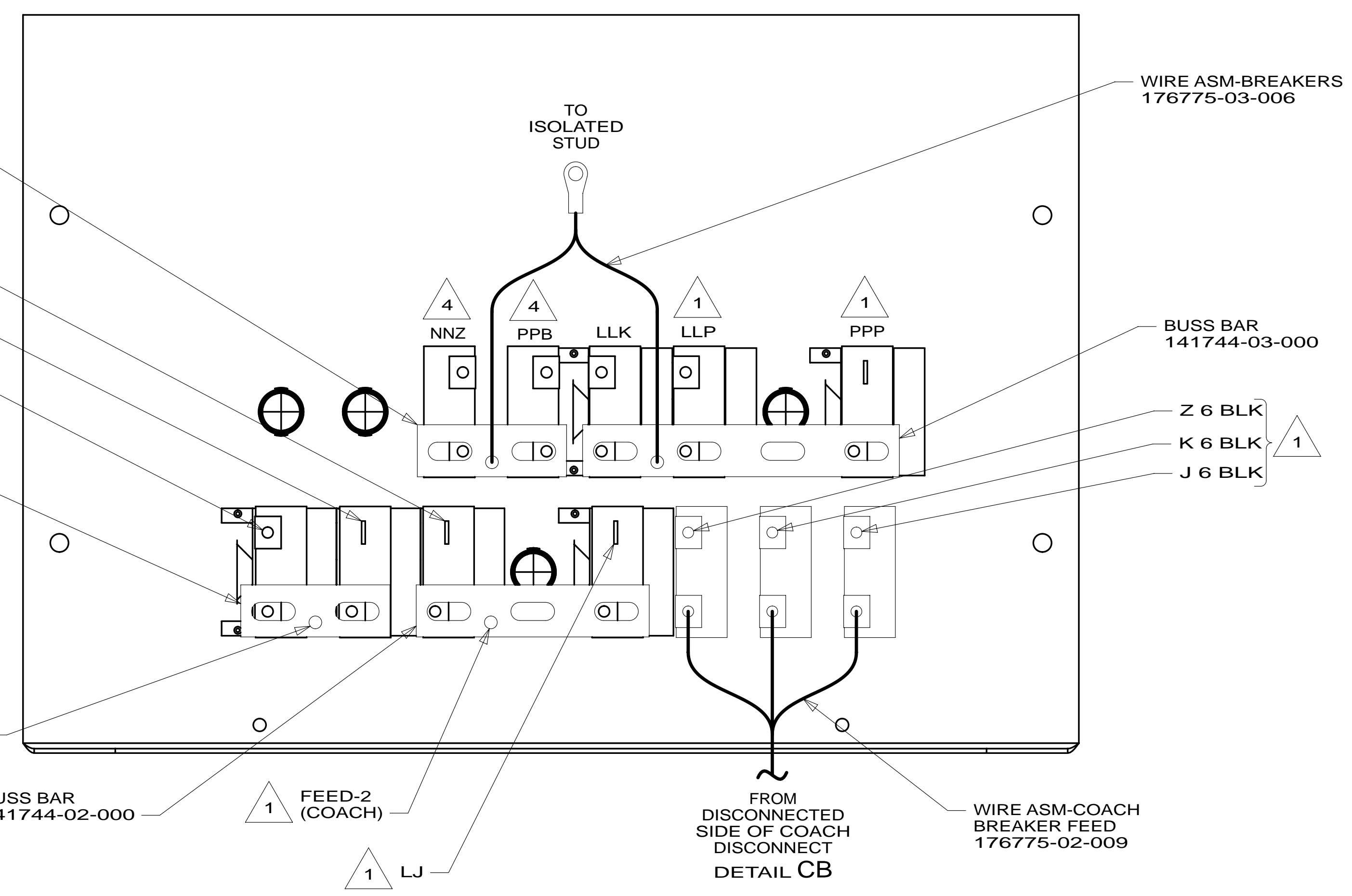
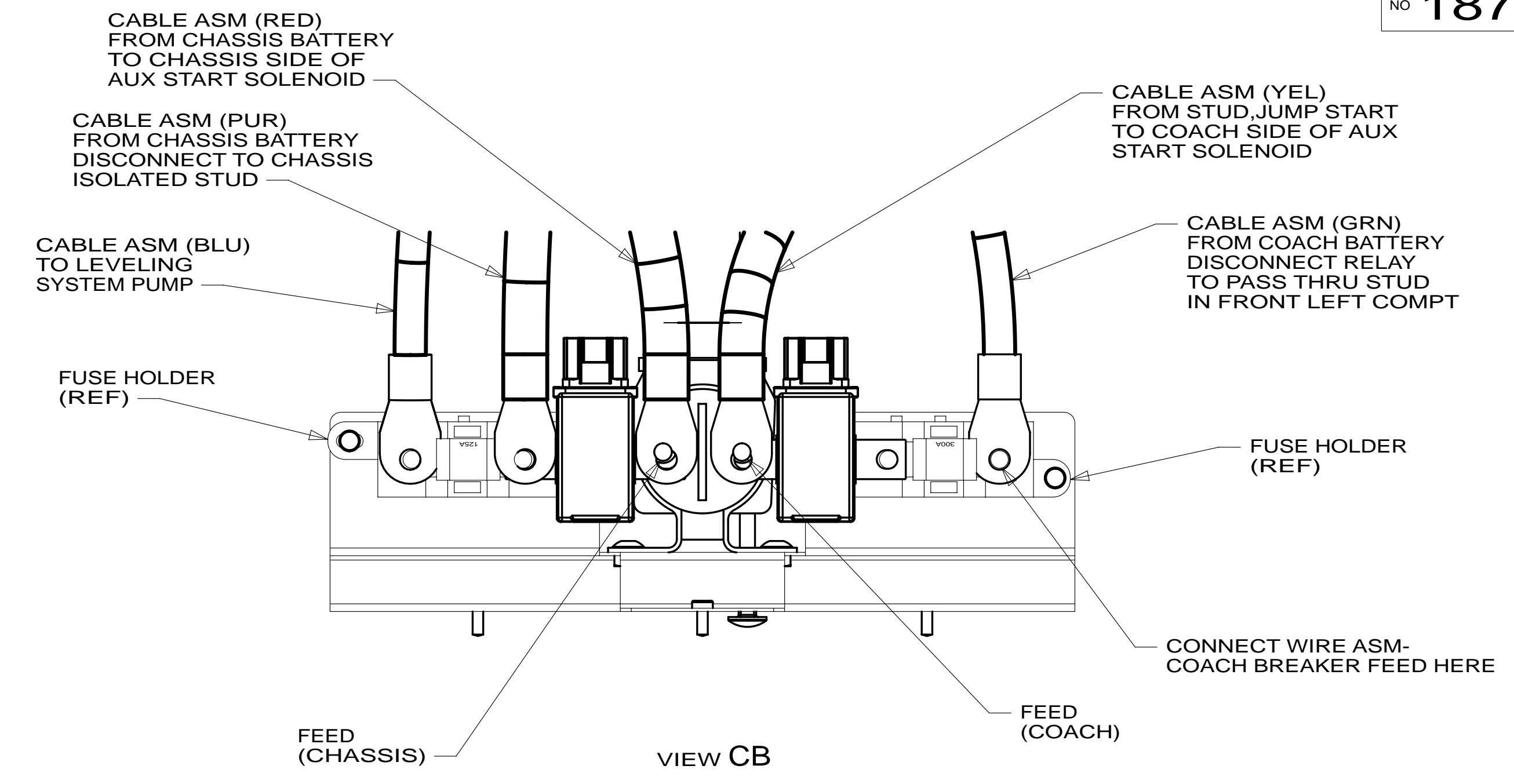
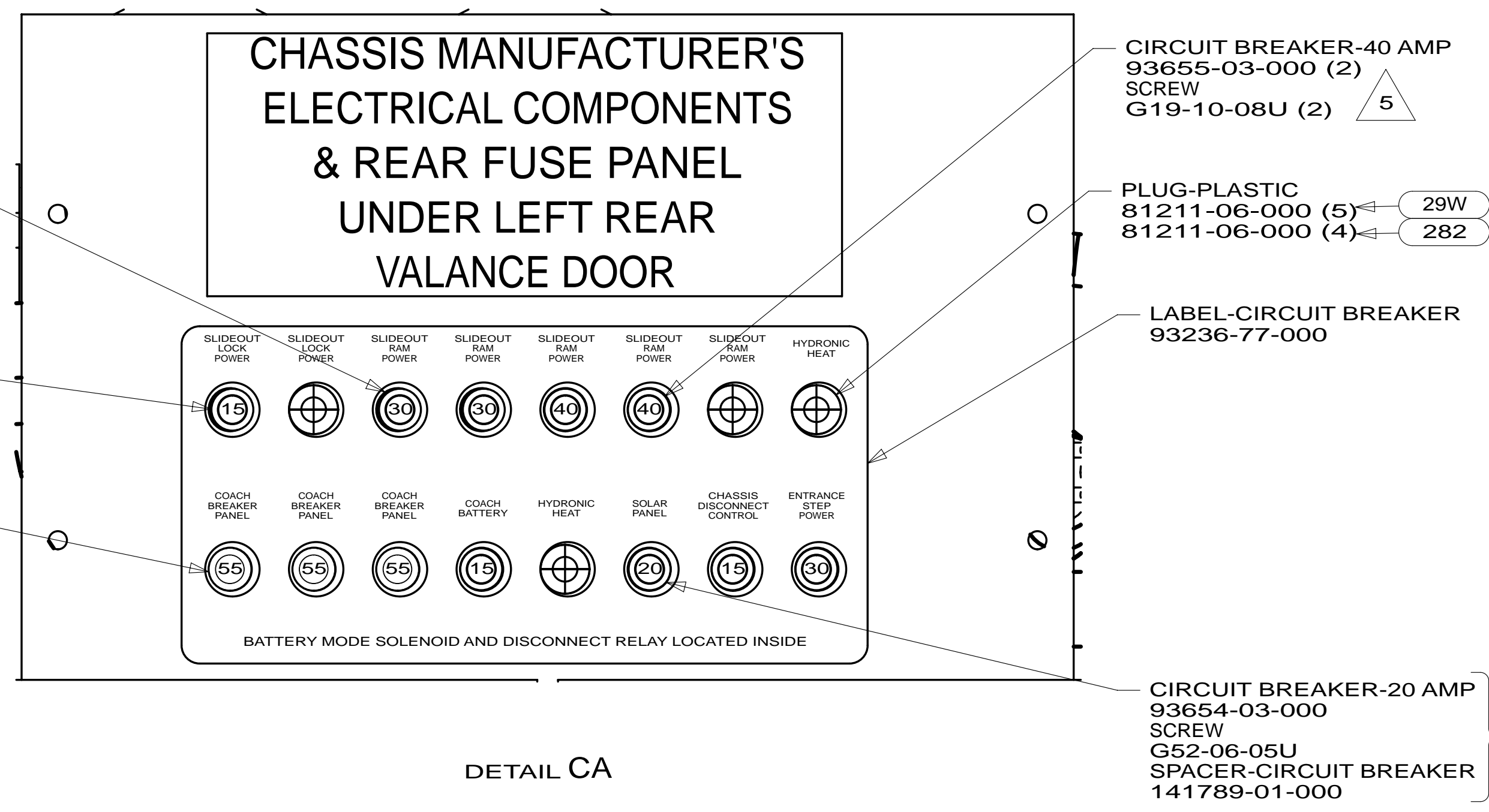
SHEET 2 PART NO **187939** REV

FOR ELECTRICAL
TORQUE
SPECIFICATIONS
SEE DWG NO.
128783-01-000

FOR
ELECTRICAL
CALLOUTS
SEE DWG NO.
121339-01-000

X-X

* 187939 *



- 5 CIRCUIT BREAKER-30 AMP 93655-02-000 (3) SCREW G52-06-05U (3) SPACER-CIRCUIT BREAKER 141789-01-000 (3)
- 5 CIRCUIT BREAKER-15 AMP 93654-02-000 (3) SCREW G52-06-05U (3) SPACER-CIRCUIT BREAKER 141789-01-000 (3)

- CIRCUIT BREAKER-55 AMP 113482-01-000 (3)

- NOTES:
- 5 REPLACE EXISTING SCREW TO PROPERLY ATTACH BREAKER TO BUSS BAR.
 - 4 FROM WIRE ASM-SLIDEOUT POWER.
 - 3 SEE BATTERY INSTL FOR ADDITIONAL INFORMATION.
 - 2 FROM WIRE ASM-CHASSIS. TIE BACK TO HARNESS WITH 29W
 - 1 CIRCUITS BRANCH FROM WIRE ASM-CHASSIS.

- 29W SOLAR PANEL/BATTERY CHRGR W/O
- 282 SOLAR PANEL - 100 WATT
- 265 CODES/STANDARDS-CSA/CMVSS
- 1B1 CODES/STANDARDS USA

FOR ELECTRICAL TORQUE SPECIFICATIONS SEE DWG NO. 128783-01-000

FOR ELECTRICAL CALLOUTS SEE DWG NO. 121339-01-000

FIRST USED

15 P40R

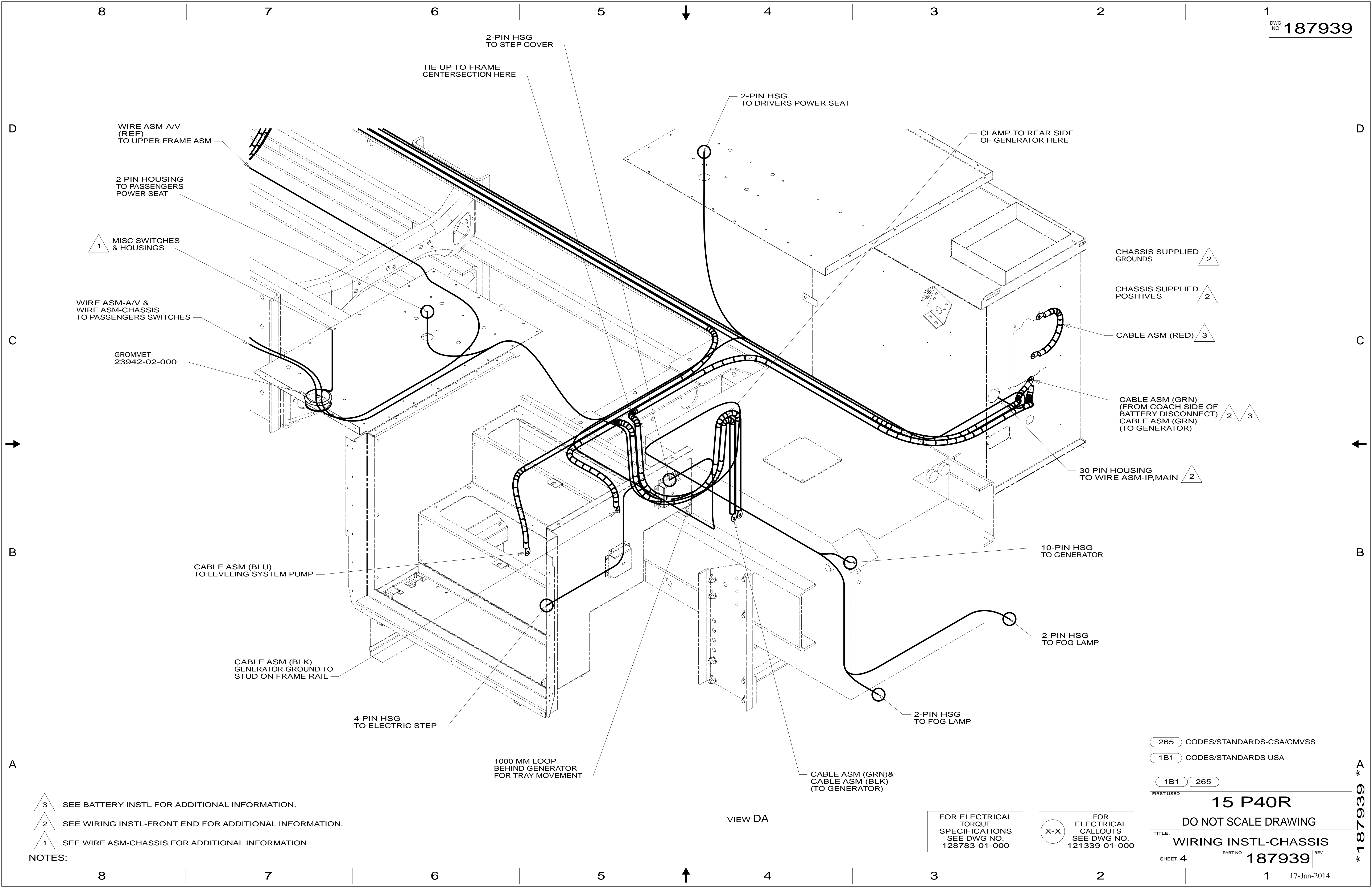
DO NOT SCALE DRAWING

TITLE: **WIRING INSTL-CHASSIS**

SHEET 3 PART NO **187939** REV

17-Jan-2014

* 187939



- NOTES:
- 3 SEE BATTERY INSTL FOR ADDITIONAL INFORMATION.
 - 2 SEE WIRING INSTL-FRONT END FOR ADDITIONAL INFORMATION.
 - 1 SEE WIRE ASM-CHASSIS FOR ADDITIONAL INFORMATION

VIEW DA

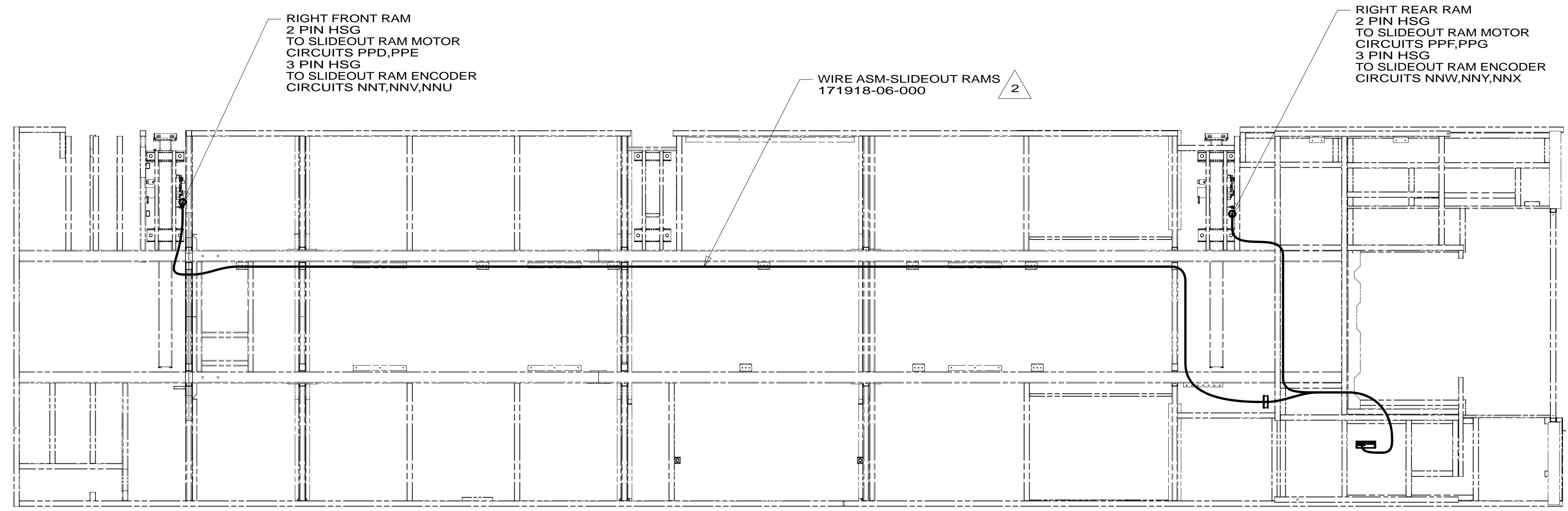
FOR ELECTRICAL TORQUE SPECIFICATIONS SEE DWG NO. 128783-01-000

FOR ELECTRICAL CALLOUTS SEE DWG NO. 121339-01-000

- 265 CODES/STANDARDS-CSA/CMVSS
- 1B1 CODES/STANDARDS USA
- 1B1 265

| | |
|------------------------------------|---------------------------|
| FIRST USED | |
| 15 P40R | |
| DO NOT SCALE DRAWING | |
| TITLE: WIRING INSTL-CHASSIS | |
| SHEET 4 | PART NO 187939 REV |
| 17-Jan-2014 | |

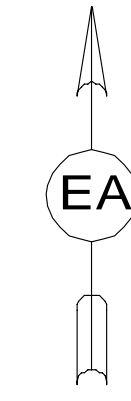
* 187939 * A



RIGHT FRONT RAM
2 PIN HSG
TO SLIDEOUT RAM MOTOR
CIRCUITS PPD,PPE
3 PIN HSG
TO SLIDEOUT RAM ENCODER
CIRCUITS NNT,NNV,NNU

WIRE ASM-SLIDEOUT RAMS
171918-06-000

RIGHT REAR RAM
2 PIN HSG
TO SLIDEOUT RAM MOTOR
CIRCUITS PPF,PPG
3 PIN HSG
TO SLIDEOUT RAM ENCODER
CIRCUITS NNW,NNY,NNX



4 PIN HSG
CIRCUITS
NNZ,PPA,PPC,PPB
FROM WIRE ASM-
SLIDEOUT POWER
149552-43-000

FROM WIRE
ASM-COACH
10 PIN HSG
CIRCUITS
HHF,NNN,NNP,
NNR,HHE,WWR,
DDJ,WWP,WWV

FROM WIRE
ASM-SLIDEOUT
RAM, RIGHT
6 PIN HSG
NNU,NNT,NNV,
NNX,NNW,NNY

(RIGHT FRONT SLIDE)
CONTROL-FLS/RPE,DUAL RA
171058-02-000
SCREW
G39-08-12U (4)

WIRE ASM-SLIDEOUT
RAM,RIGHT
5 PIN HSG
CIRCUITS
PPD,PPE,PPG,PPF

VIEW EA

2 WIRES ROUTED ALONG FRAME RAIL.

1. AT MINIMUM ALL WIRES TO BE SUPPORTED AND SECURED PER CODE REQUIREMENTS. USE CLAMP 10495 OR 10497 OR WIRE TIE 8343 OR 108046 AND SCREW G67-XX-XXX OR G56-XX-XXX AS APPROPRIATE FOR INSTALLATION.

NOTES:

FOR ELECTRICAL
TORQUE
SPECIFICATIONS
SEE DWG NO.
128783-01-000

FOR
ELECTRICAL
CALLOUTS
SEE DWG NO.
121339-01-000

265 CODES/STANDARDS-CSA/CMVSS

1B1 CODES/STANDARDS USA

1B1 265

FIRST USED
15 P40R

DO NOT SCALE DRAWING

TITLE: **WIRING INSTL-CHASSIS**

SHEET 5 PART NO **187939** REV