



**DANGER**

**Danger of electrical shock, burns or death.** Always remove all power sources before attempting any repair, service or diagnostic work. Power can be present from shore power, generator, inverter or battery. All power sources must be disabled and secured before performing any service.



**CAUTION**

If you lack the skills, tools or equipment to perform diagnostic or repair work leave such work to an authorized Winnebago Industries dealer or other qualified shop.

DRAWING NO.	MODELS	SHEETS
187915-01	P40R	1,2,3,5
187915-02	P36M	1,3,4,5
187915-03	P42E	1,3,5,6
187915-04	---	1,3,5

RELEASE REV/DATE A DWG NO. 187915  
 REV/ZONE REVISION RECORD DATE DFT-ORIG

	P40R	P36M	P42E
CABLE ASM (YEL) FROM COACH BATTERY FUSE TO COACH STUD,JUMP START	175207-52-069	175207-52-063	175207-52-082
CABLE ASM (YEL) FROM STUD,JUMP START TO COACH SIDE OF AUX START SOLENOID	175207-52-004	175207-52-004	175207-52-004
CABLE ASM (BLK) FROM STUD,JUMP START "GROUND" TO FRAME RAIL GROUND	175211-01-010	175211-01-010	175211-01-010
CABLE ASM (ORG) FROM COACH BATTERY TO INVERTER FUSE	175207-66-010	175207-66-010	175207-66-010
CABLE ASM (ORG) FROM INVERTER FUSE TO INVERTER DISCONNECT SWITCH	175207-67-023	175207-67-027	175207-67-034
CABLE ASM (ORG) FROM INVERTER DISCONNECT TO POSITIVE TERMINAL ON INVERTER	175207-65-005	175207-65-005	175207-65-005
CABLE ASM (BLK) FROM BATTERY TO INVERTER NEGATIVE TERMINAL	175211-01-028	175211-01-028	175211-01-034
CABLE ASM (BLK) FROM COACH BATTERY TO FRAME RAIL GROUND	175211-02-072	175211-02-060	175211-02-085
CABLE ASM (PUR) FROM CHASSIS BATTERY DISCONNECT TO CHASSIS ISOLATED STUD	175207-15-005	175207-15-005	175207-15-005
CABLE ASM (BLU) FROM CHASSIS DISCONNECT FUSE TO LEVELING SYSTEM PUMP	141416-26-120	141416-26-108	141416-26-129
CABLE ASM (BLK) FROM LEVELING SYSTEM TO FRAME RAIL GROUND	133567-11-005	133567-11-005	133567-11-005
CABLE ASM (GRN) FROM COACH BAT DISC RELAY TO PASS THRU STUD IN FRONT LEFT COMPT	175207-42-125	175207-42-115	175207-42-135
CABLE ASM (GRN) FROM PASS THRU STUD IN FRONT LEFT COMPT TO GENERATOR	175207-42-031	175207-42-031	175207-42-031
CABLE ASM (BLK) FROM GENERATOR TO FRAME RAIL GROUND BOLT	175211-02-020	175211-02-020	175211-02-020
CABLE ASM (YEL) JUMPER BETWEEN POSITIVE POSTS ON COACH BATTERY	141417-52-004 141417-51-002 (4)	141417-52-004 141417-51-002 (4)	141417-52-004 141417-51-002 (4)
CABLE ASM (BLK) JUMPER BETWEEN NEGATIVE POSTS ON COACH BATTERY	133568-12-004 133568-11-002 (4)	133568-12-004 133568-11-002 (4)	133568-12-004 133568-11-002 (4)
CABLE ASM (RED) JUMPER BETWEEN POSITIVE POSTS IN LEFT FRONT COMPT	141417-32-002	141417-32-002	141417-32-002
CABLE ASM-TEMPERATURE,BATTERY	175385-03-000	175385-03-000	175385-03-000
CABLE ASM (RED) FROM CHASSIS BATTERY FUSE TO CHASSIS SIDE OF AUX START SOLENOID	175207-35-008	175207-35-008	175207-35-008
CABLE ASM (RED) FROM CHASSIS BATTERY TO CHASSIS BATTERY FUSE	175207-35-005	175207-35-005	175207-35-005
CABLE ASM (YEL) FROM COACH BATTERY TO COACH BATTERY FUSE	175207-52-006	175207-52-006	175207-52-006

2

2

1

1

2

3

2

3

265 CODES/STANDARDS-CSA/CMVSS  
 1B1 CODES/STANDARDS USA  
 1B1 265

WINNEBAGO COPYRIGHT 2014 WINNEBAGO INDUSTRIES, INC.

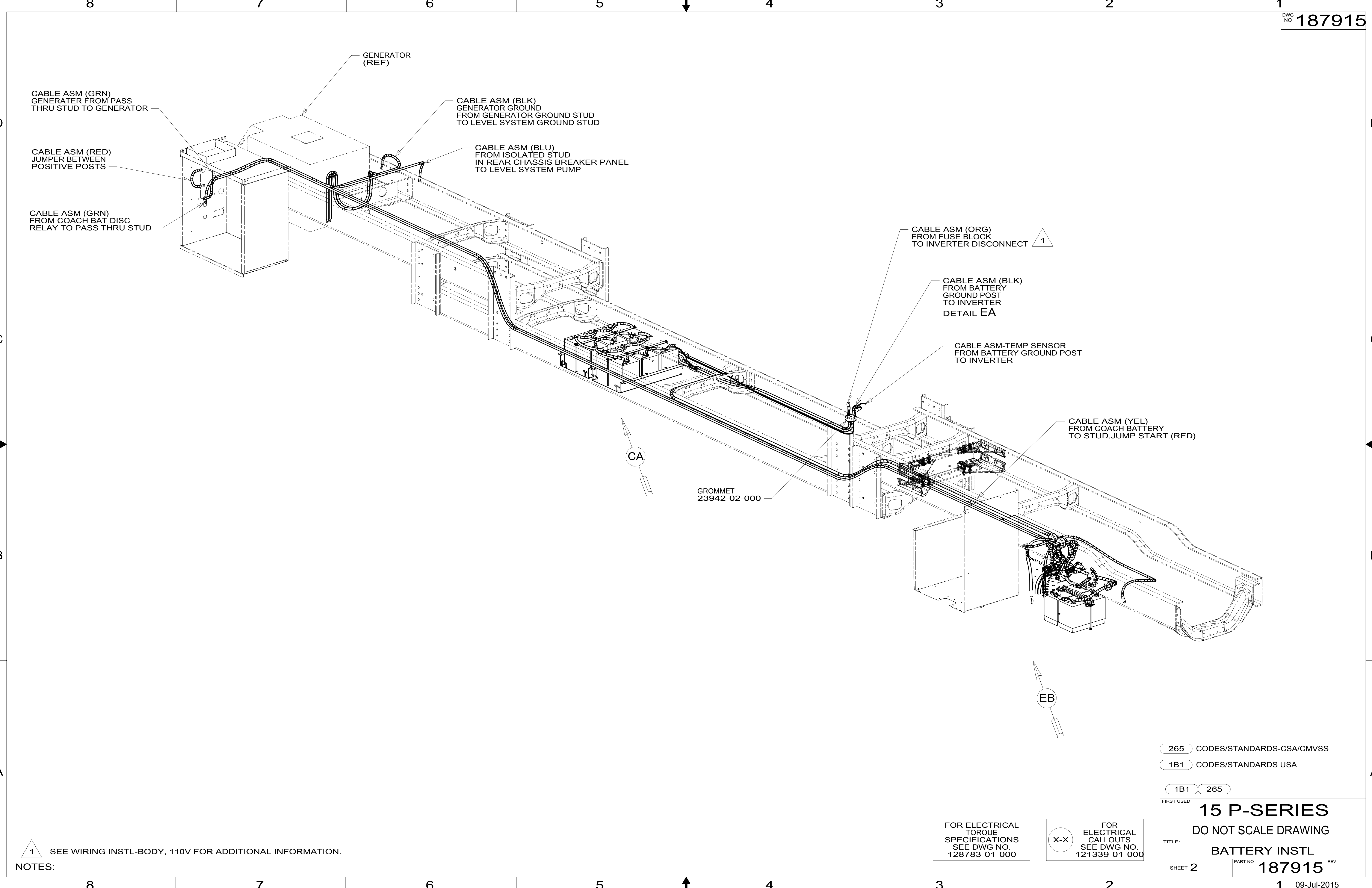
DFT-ORIG	ORIG. DATE
CHKR	ALL DIMENSIONS ARE IN MILLIMETERS
P.E.	
M.E.	FIRST USED
DSNR	15 P-SERIES
UNSPECIFIED TOLERANCES ARE:	
WHOLE DIM (X)	: 3
ONE-PLACE (X.X)	: 1.5
TWO-PLACE (X.XX)	: 0.50
ANGLE	: 1'
THIRD ANGLE PROJECTION	
DO NOT SCALE DRAWING	REFER TO ES0018 FOR FASTENER TIGHTENING GUIDELINES
TITLE: BATTERY INSTL	
SHEET 1 OF 7	PART NO. 187915 REV

3 SEE WIRING INSTL-FRONT END FOR ADDITIONAL INFORMATION.  
 2 SEE WIRING INSTL-CHASSIS FOR ADDITIONAL INFORMATION.  
 1 SEE LEVELING SYSTEM INSTL FOR ADDITIONAL INFORMATION.

FOR ELECTRICAL TORQUE SPECIFICATIONS SEE DWG NO. 128783-01-000

FOR ELECTRICAL CALLOUTS SEE DWG NO. 121339-01-000

\*187915\*



CABLE ASM (GRN)  
GENERATOR FROM PASS  
THRU STUD TO GENERATOR

CABLE ASM (RED)  
JUMPER BETWEEN  
POSITIVE POSTS

CABLE ASM (GRN)  
FROM COACH BAT DISC  
RELAY TO PASS THRU STUD

GENERATOR  
(REF)

CABLE ASM (BLK)  
GENERATOR GROUND  
FROM GENERATOR GROUND STUD  
TO LEVEL SYSTEM GROUND STUD

CABLE ASM (BLU)  
FROM ISOLATED STUD  
IN REAR CHASSIS BREAKER PANEL  
TO LEVEL SYSTEM PUMP

CABLE ASM (ORG)  
FROM FUSE BLOCK  
TO INVERTER DISCONNECT 1

CABLE ASM (BLK)  
FROM BATTERY  
GROUND POST  
TO INVERTER  
DETAIL EA

CABLE ASM-TEMP SENSOR  
FROM BATTERY GROUND POST  
TO INVERTER

CABLE ASM (YEL)  
FROM COACH BATTERY  
TO STUD, JUMP START (RED)

GROMMET  
23942-02-000

CA

EB

NOTES:  
1 SEE WIRING INSTL-BODY, 110V FOR ADDITIONAL INFORMATION.

FOR ELECTRICAL  
TORQUE  
SPECIFICATIONS  
SEE DWG NO.  
128783-01-000

X-X  
FOR  
ELECTRICAL  
CALLOUTS  
SEE DWG NO.  
121339-01-000

265 CODES/STANDARDS-CSA/CMVSS

1B1 CODES/STANDARDS USA

1B1 265

FIRST USED  
**15 P-SERIES**

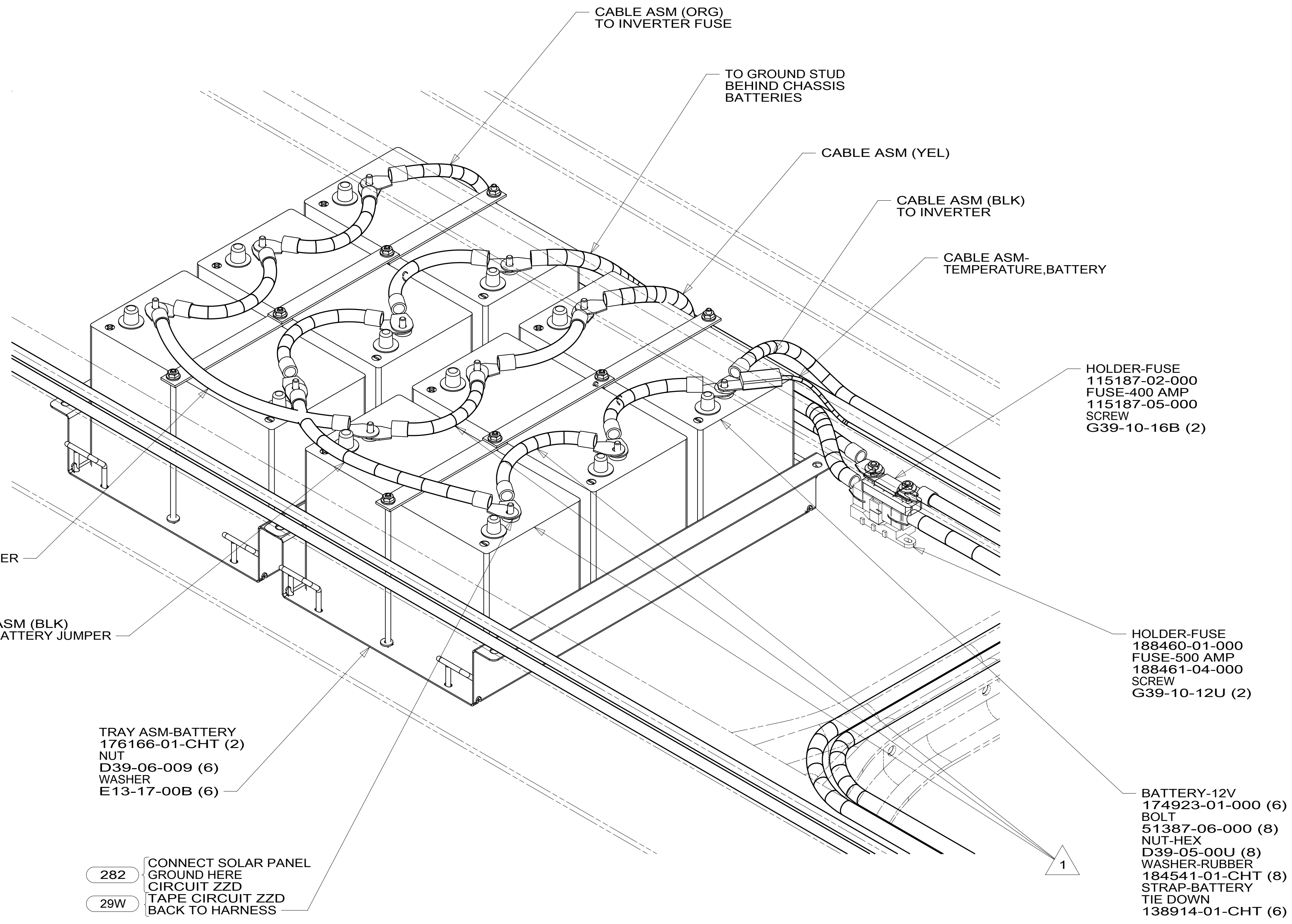
DO NOT SCALE DRAWING

TITLE:  
**BATTERY INSTL**

SHEET 2 PART NO **187915** REV

1 09-Jul-2015

\*187915\*



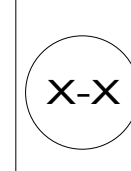
VIEW CA

- 29W SOLAR PANEL/BATTERY CHRГ W/O
- 282 SOLAR PANEL - 100 WATT
- 265 CODES/STANDARDS-CSA/CMVSS
- 1B1 CODES/STANDARDS USA

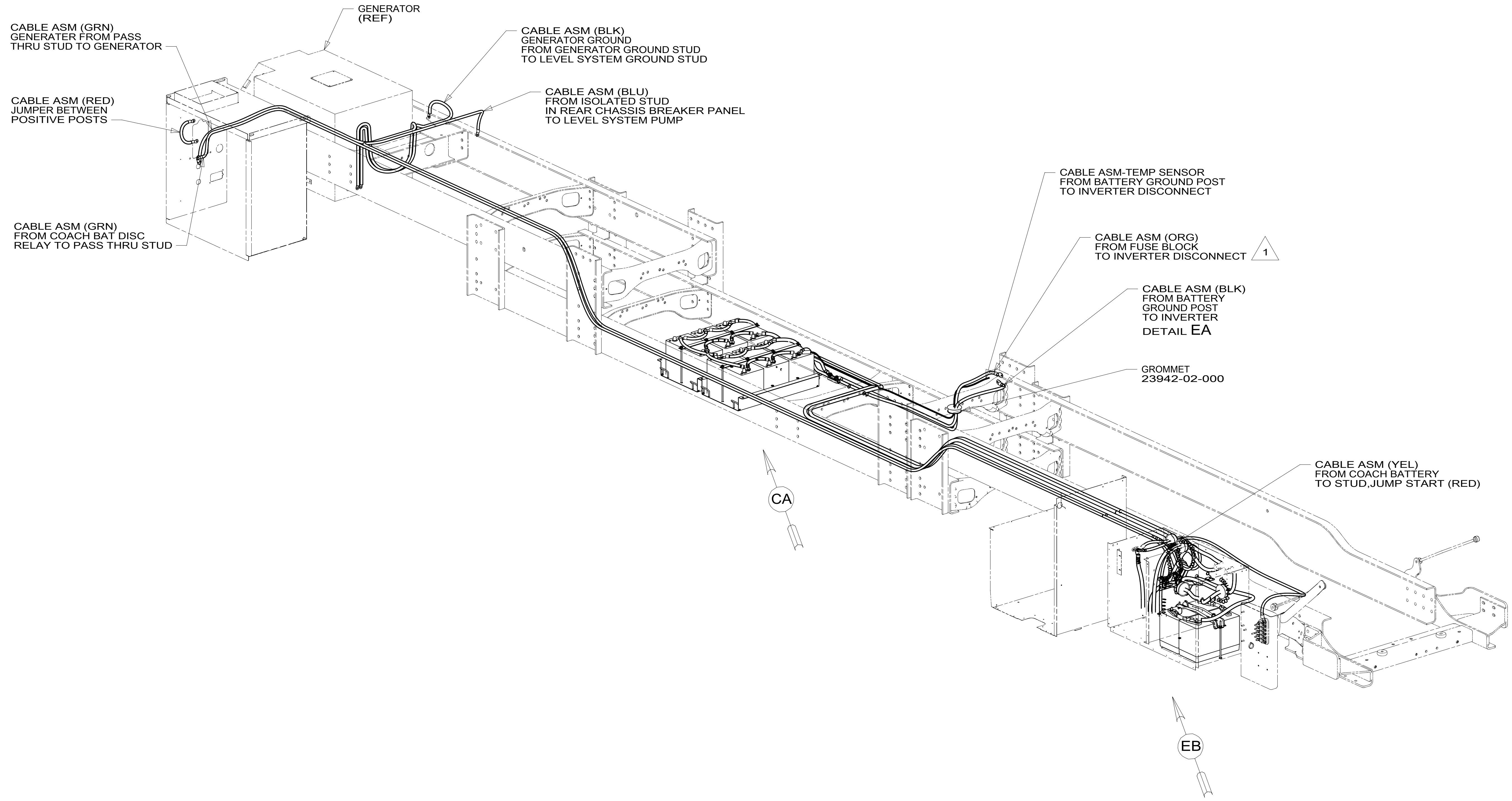
FIRST USED	
<b>15 P-SERIES</b>	
DO NOT SCALE DRAWING	
TITLE: <b>BATTERY INSTL</b>	
SHEET 3	PART NO <b>187915</b> REV
1 09-Jul-2015	

FOR ELECTRICAL TORQUE SPECIFICATIONS SEE DWG NO. 128783-01-000

FOR ELECTRICAL CALLOUTS SEE DWG NO. 121339-01-000



\*187915\*



NOTES:  
 1 SEE WIRING INSTL-BODY, 110V FOR ADDITIONAL INFORMATION.

FOR ELECTRICAL TORQUE SPECIFICATIONS SEE DWG NO. 128783-01-000

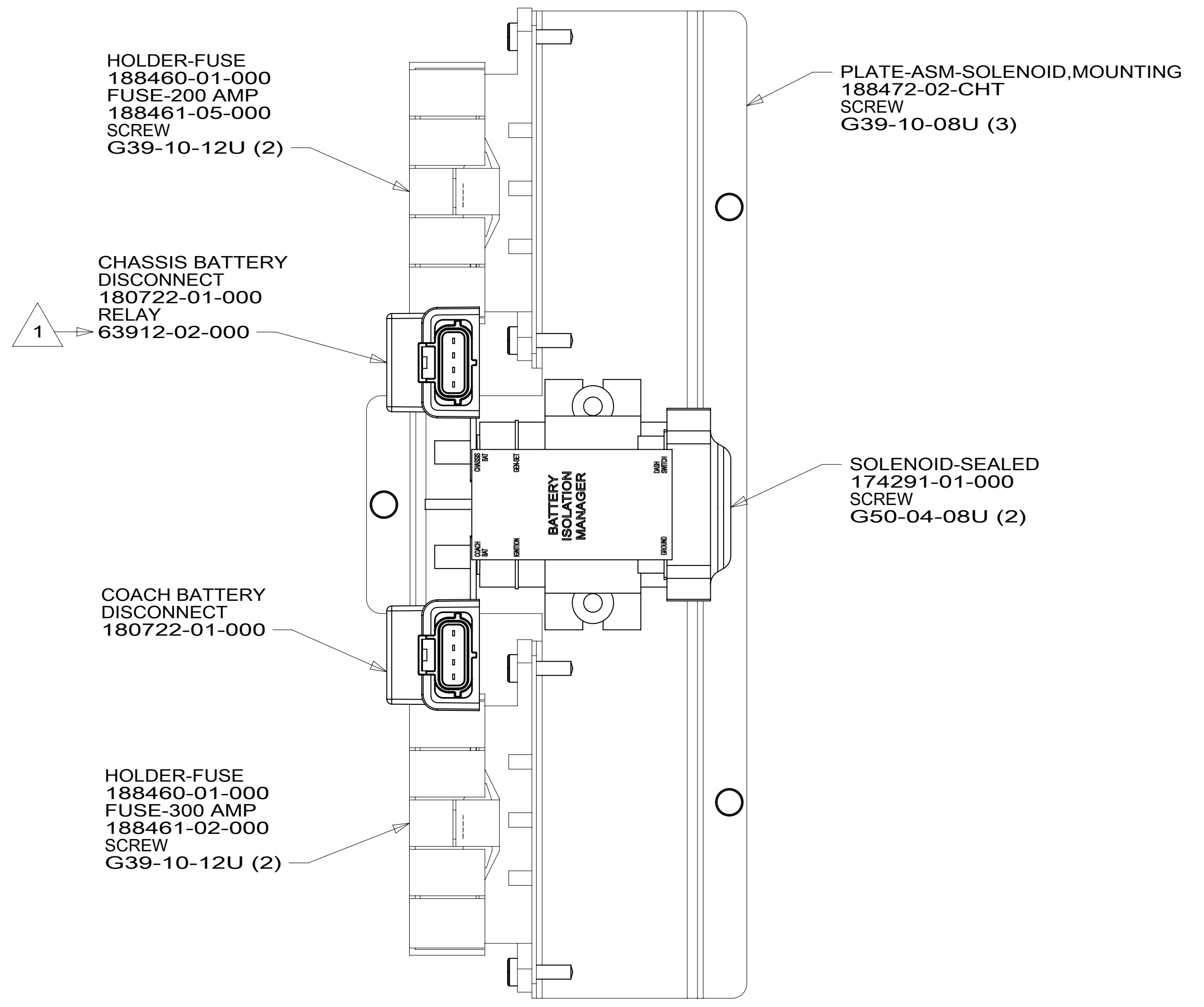
FOR ELECTRICAL CALLOUTS SEE DWG NO. 121339-01-000

- 265 CODES/STANDARDS-CSA/CMVSS
- 1B1 CODES/STANDARDS USA
- 1B1 265

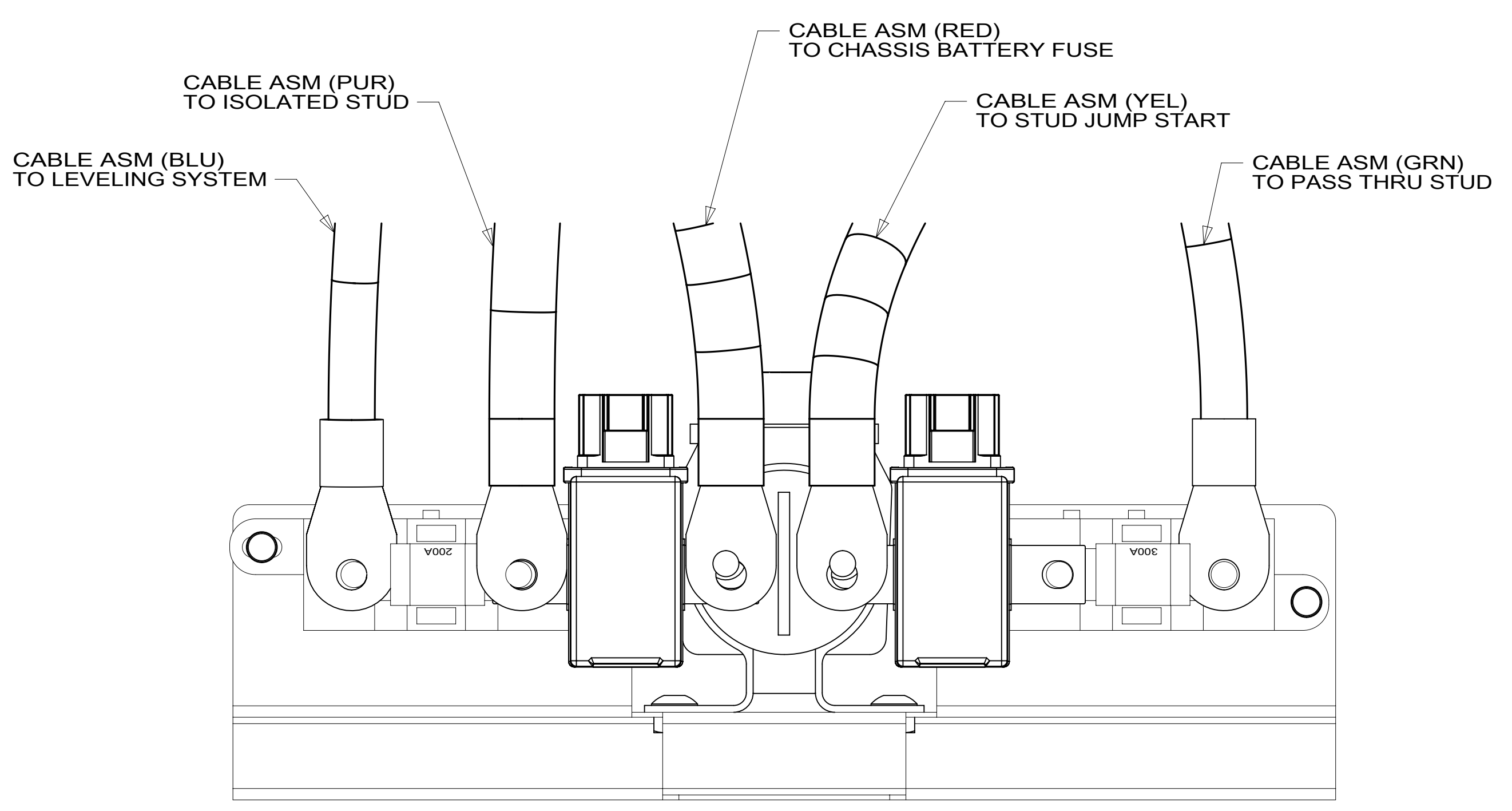
FIRST USED	
<b>15 P-SERIES</b>	
DO NOT SCALE DRAWING	
TITLE: <b>BATTERY INSTL</b>	
SHEET 4	PART NO <b>187915</b> REV
1 09-Jul-2015	

\*187915\*

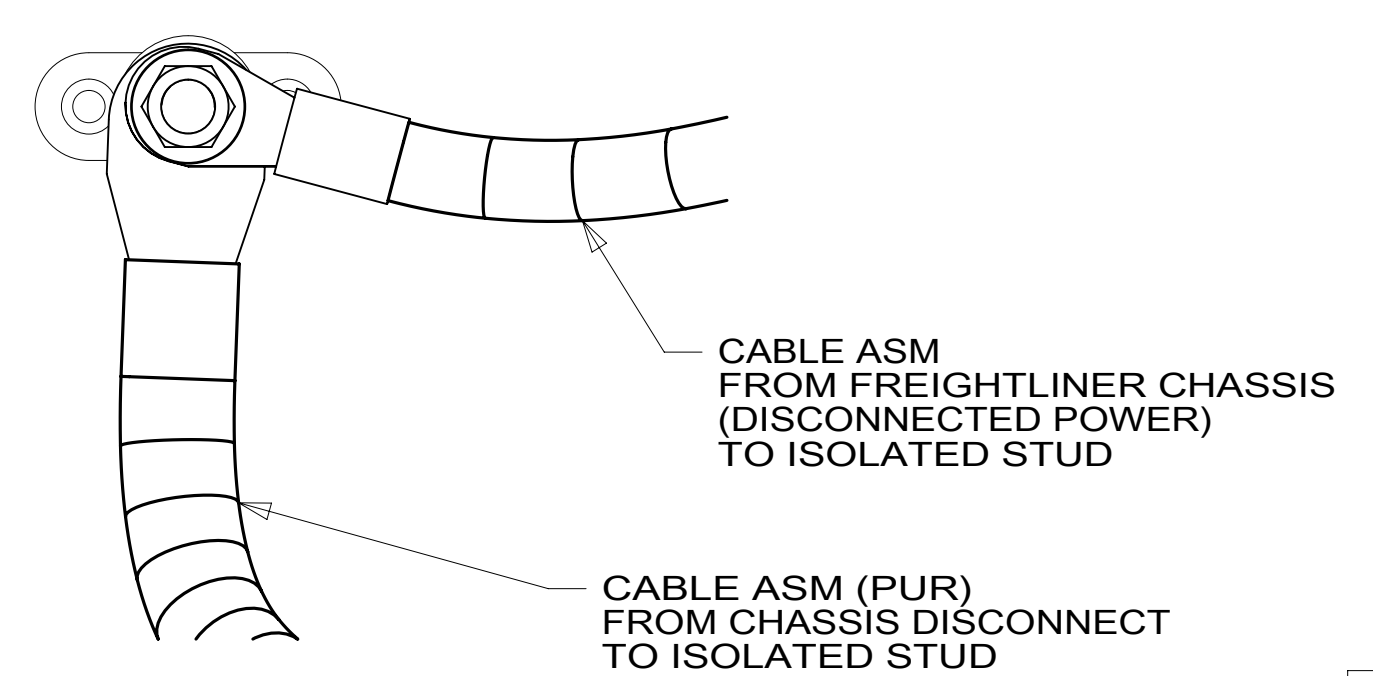




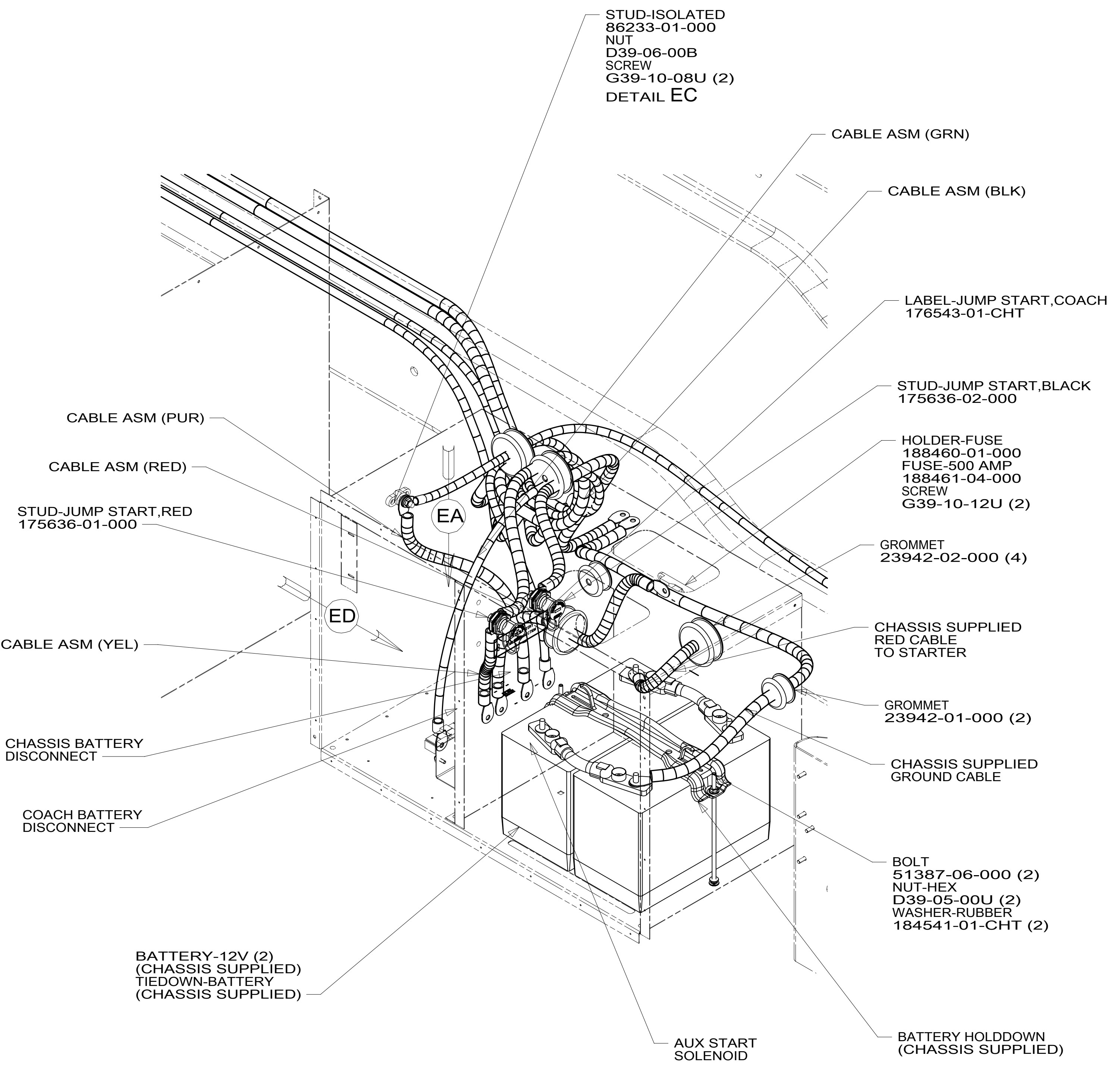
VIEW EA



VIEW ED



DETAIL EC



VIEW EB

1 RELAY CONNECTS TO WIRE ASM-CHASSIS. (CHASSIS DISCONNECT LOCKOUT RELAY)

NOTES:

FOR ELECTRICAL TORQUE SPECIFICATIONS SEE DWG NO. 128783-01-000

FOR ELECTRICAL CALLOUTS SEE DWG NO. 121339-01-000

265 CODES/STANDARDS-CSA/CMVSS

1B1 CODES/STANDARDS USA

1B1 265

FIRST USED **15 P-SERIES**

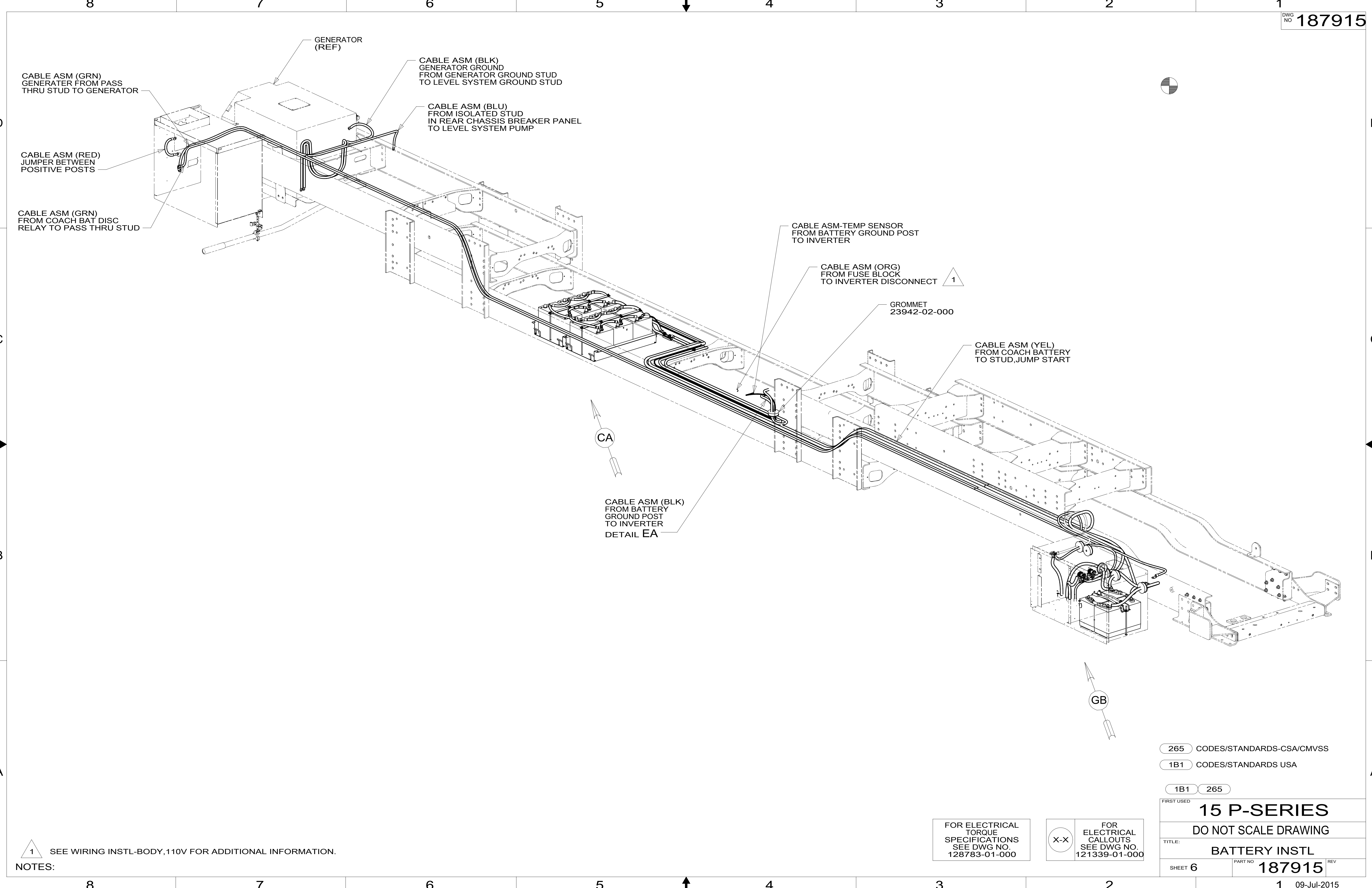
DO NOT SCALE DRAWING

TITLE: **BATTERY INSTL**

SHEET 5 PART NO **187915** REV

09-Jul-2015

\*187915\*



CABLE ASM (GRN)  
GENERATOR FROM PASS  
THRU STUD TO GENERATOR

CABLE ASM (RED)  
JUMPER BETWEEN  
POSITIVE POSTS

CABLE ASM (GRN)  
FROM COACH BAT DISC  
RELAY TO PASS THRU STUD

GENERATOR  
(REF)

CABLE ASM (BLK)  
GENERATOR GROUND  
FROM GENERATOR GROUND STUD  
TO LEVEL SYSTEM GROUND STUD

CABLE ASM (BLU)  
FROM ISOLATED STUD  
IN REAR CHASSIS BREAKER PANEL  
TO LEVEL SYSTEM PUMP

CABLE ASM-TEMP SENSOR  
FROM BATTERY GROUND POST  
TO INVERTER

CABLE ASM (ORG)  
FROM FUSE BLOCK  
TO INVERTER DISCONNECT 1

GROMMET  
23942-02-000

CABLE ASM (YEL)  
FROM COACH BATTERY  
TO STUD, JUMP START

CA

CABLE ASM (BLK)  
FROM BATTERY  
GROUND POST  
TO INVERTER  
DETAIL EA

GB

1 SEE WIRING INSTL-BODY, 110V FOR ADDITIONAL INFORMATION.

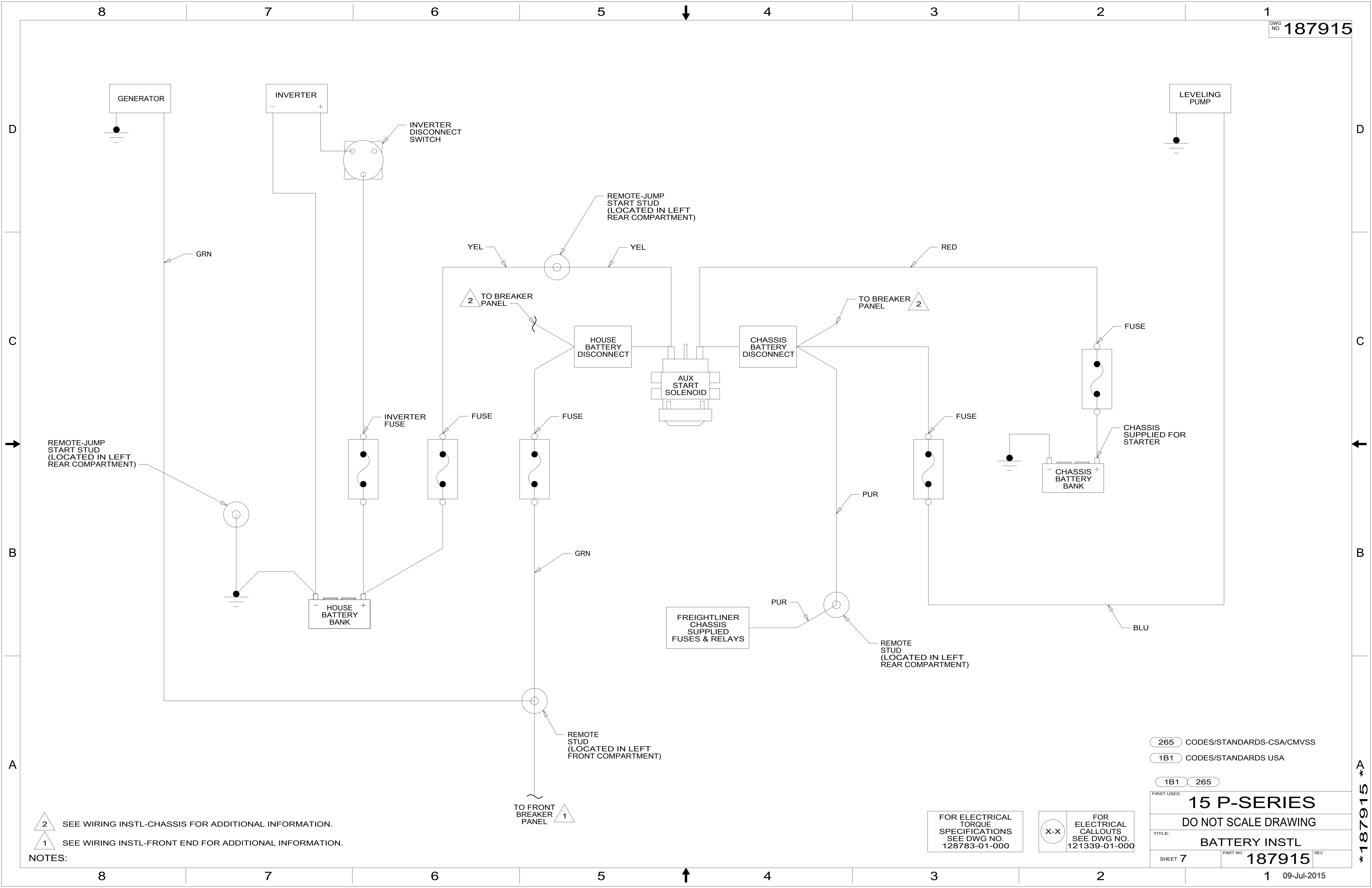
FOR ELECTRICAL  
TORQUE  
SPECIFICATIONS  
SEE DWG NO.  
128783-01-000

X-X  
FOR  
ELECTRICAL  
CALLOUTS  
SEE DWG NO.  
121339-01-000

265 CODES/STANDARDS-CSA/CMVSS  
1B1 CODES/STANDARDS USA  
1B1 265

FIRST USED  
**15 P-SERIES**  
DO NOT SCALE DRAWING  
TITLE: **BATTERY INSTL**  
SHEET 6 PART NO **187915** REV  
1 09-Jul-2015

\*187915\*



2 SEE WIRING INSTL-CHASSIS FOR ADDITIONAL INFORMATION.  
 1 SEE WIRING INSTL-FRONT END FOR ADDITIONAL INFORMATION.

NOTES:

FOR ELECTRICAL TORQUE SPECIFICATIONS SEE DWG NO. 128783-01-000

FOR ELECTRICAL CALLOUTS SEE DWG NO. 121339-01-000

- 265 CODES/STANDARDS-CSA/CMVSS
- 1B1 CODES/STANDARDS USA
- 1B1 265

FIRST USED	
<b>15 P-SERIES</b>	
<b>DO NOT SCALE DRAWING</b>	
TITLE: <b>BATTERY INSTL</b>	
SHEET 7	PART NO <b>187915</b> REV
1 09-Jul-2015	

\*187915\*A