



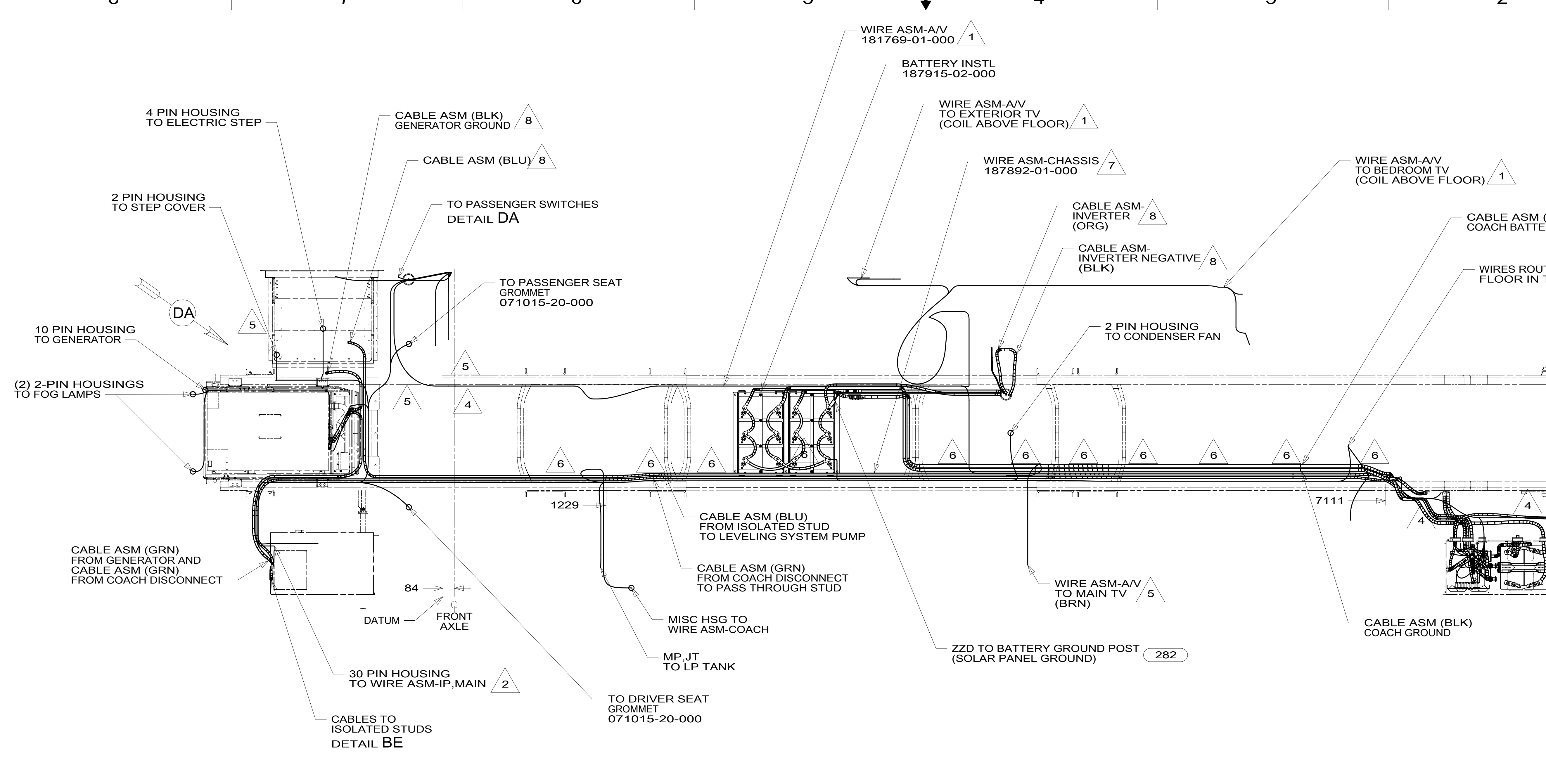
DANGER

Danger of electrical shock, burns or death. Always remove all power sources before attempting any repair, service or diagnostic work. Power can be present from shore power, generator, inverter or battery. All power sources must be disabled and secured before performing any service.

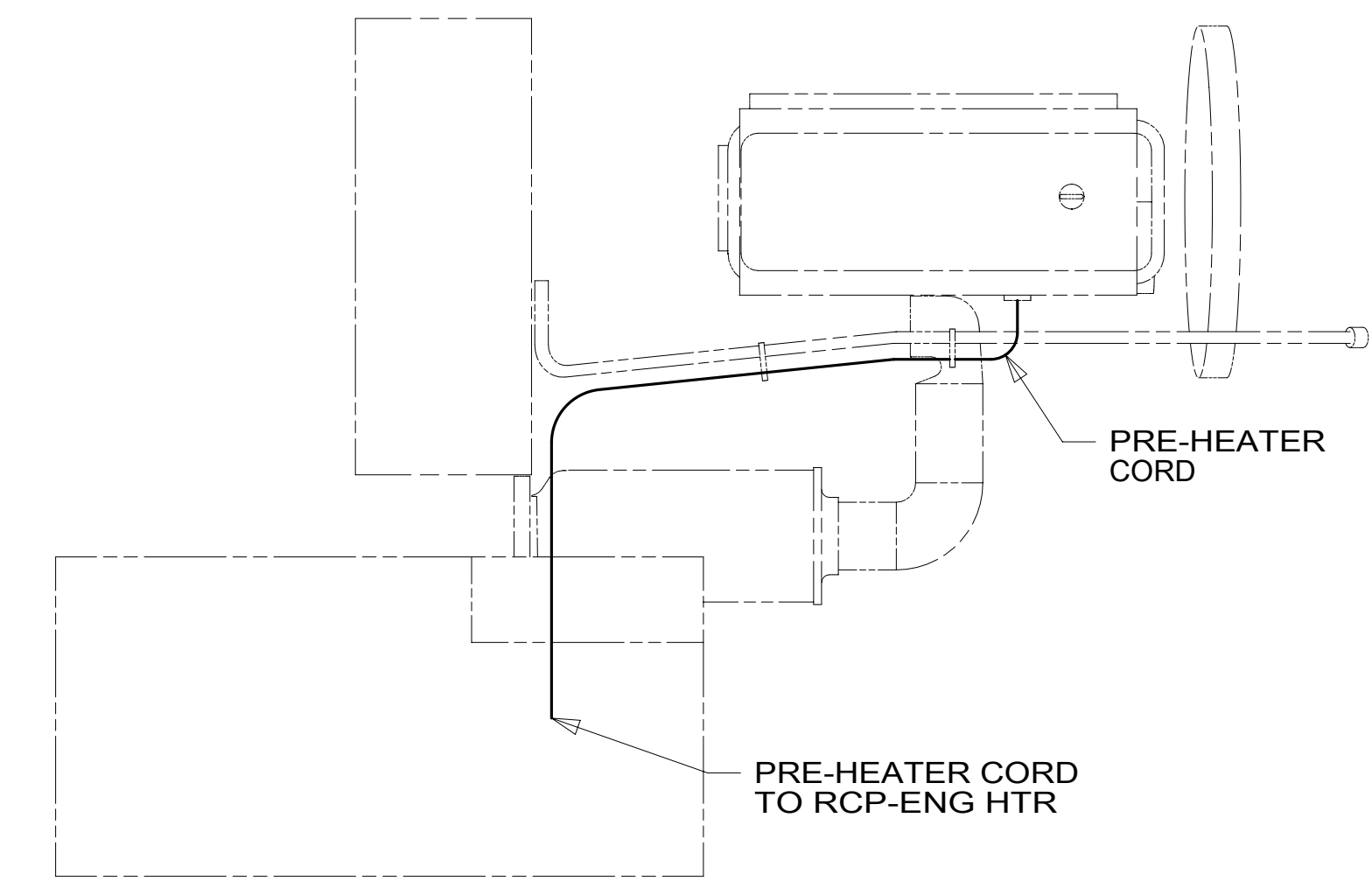


CAUTION

If you lack the skills, tools or equipment to perform diagnostic or repair work leave such work to an authorized Winnebago Industries dealer or other qualified shop.



- NOTES:
- 8 SEE BATTERY INSTL FOR ADDITIONAL INFORMATION
 - 7 REST WIRE IN FRAME RAIL WHEN APPLICABLE.
 - 6 CLAMP 83610-01-000, SCREW G39-08-12U
 - 5 CLAMP 10497-03-000, SCREW G39-08-12U
 - 4 USE TIE-WIRE 8343-04-000 TO SECURE WIRES TO FLOOR SUPPORT FRAME AT LEAST ONCE EVERY 600MM.
 - 3 SECURE CORD AWAY FROM ALL MOVING PARTS AND EXHAUST WITH WIRE-TIE 93147-01-000 AS REQUIRED
 - 2 SEE WIRING INSTL-FRONT END FOR ADDITIONAL INFORMATION.
 - 1 SEE SHEET 5 FOR ADDITIONAL INFORMATION.



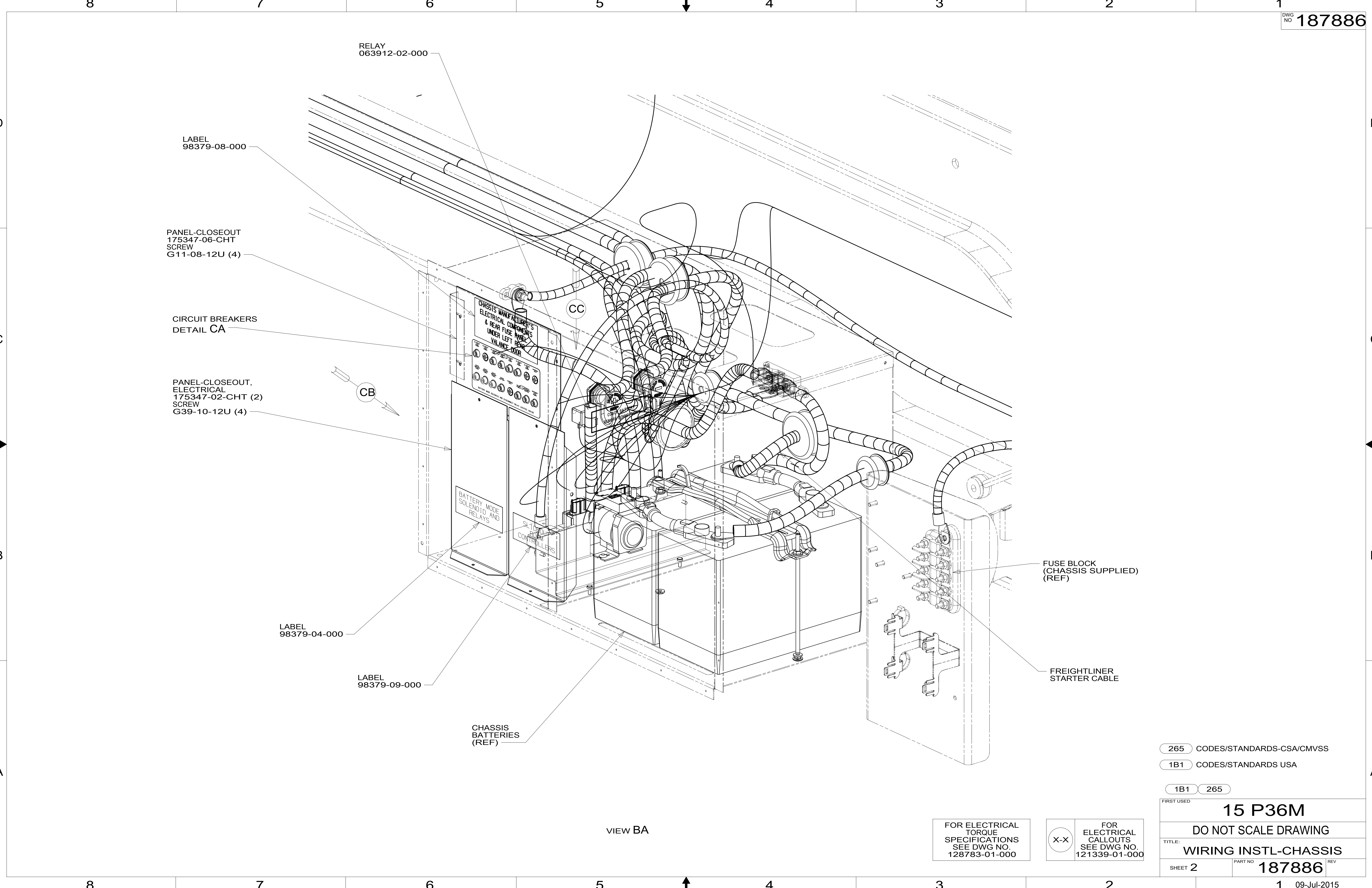
- 282 SOLAR PANEL - 100 WATT
- 265 CODES/STANDARDS-CSA/CMVSS
- 1B1 CODES/STANDARDS USA
- 1B1 265

		COPYRIGHT 2014 WINNEBAGO INDUSTRIES, INC.	
DFTR	ORIG. DATE	ALL DIMENSIONS ARE IN MILLIMETERS	
CHKR		FIRST USED	
P.E.		15 P36M	
M.E.		MATERIAL:	
DSNR		UNSPECIFIED TOLERANCES ARE:	
		WHOLE DIM (X)	: 3
		ONE-PLACE (X.X)	: 1.5
		TWO-PLACE (X.XX)	: 0.50
		ANGLE	: 1'
		THIRD ANGLE PROJECTION	
DO NOT SCALE DRAWING		REFER TO ES0018 FOR FASTENER TIGHTENING GUIDELINES	
TITLE: WIRING INSTL-CHASSIS			
SHEET 1 OF 5	PART NO 187886	REV	
REF:	1	09-Jul-2015	

FOR ELECTRICAL TORQUE SPECIFICATIONS SEE DWG NO. 128783-01-000

X-X FOR ELECTRICAL CALLOUTS SEE DWG NO. 121339-01-000

*187886 A



RELAY
063912-02-000

LABEL
98379-08-000

PANEL-CLOSEOUT
175347-06-CHT
SCREW
G11-08-12U (4)

CIRCUIT BREAKERS
DETAIL CA

PANEL-CLOSEOUT,
ELECTRICAL
175347-02-CHT (2)
SCREW
G39-10-12U (4)

LABEL
98379-04-000

LABEL
98379-09-000

CHASSIS
BATTERIES
(REF)

FUSE BLOCK
(CHASSIS SUPPLIED)
(REF)

FREIGHTLINER
STARTER CABLE

VIEW BA

FOR ELECTRICAL
TORQUE
SPECIFICATIONS
SEE DWG NO.
128783-01-000

FOR
ELECTRICAL
CALLOUTS
SEE DWG NO.
121339-01-000

265 CODES/STANDARDS-CSA/CMVSS

1B1 CODES/STANDARDS USA

1B1 265

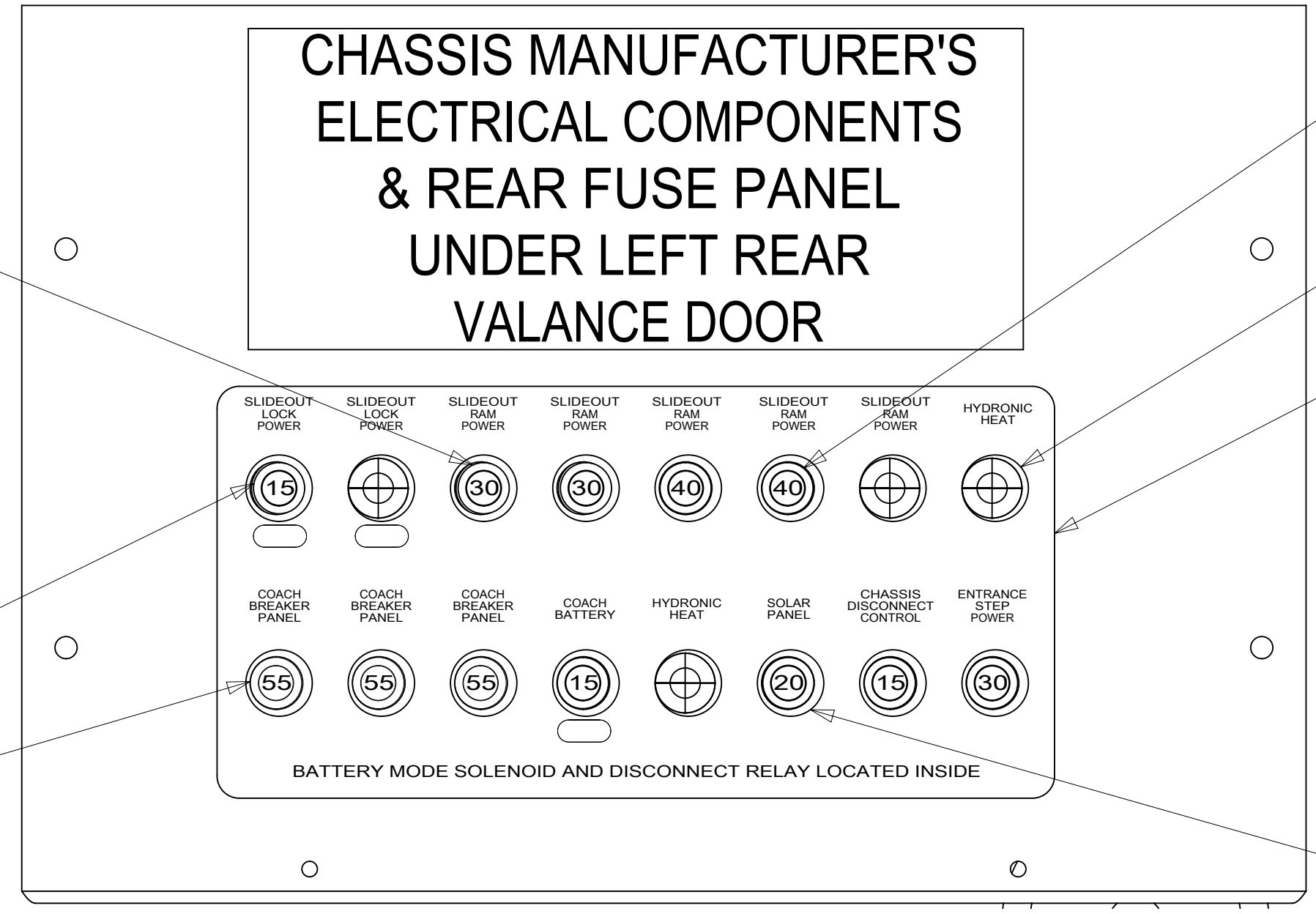
FIRST USED
15 P36M

DO NOT SCALE DRAWING

TITLE:
WIRING INSTL-CHASSIS

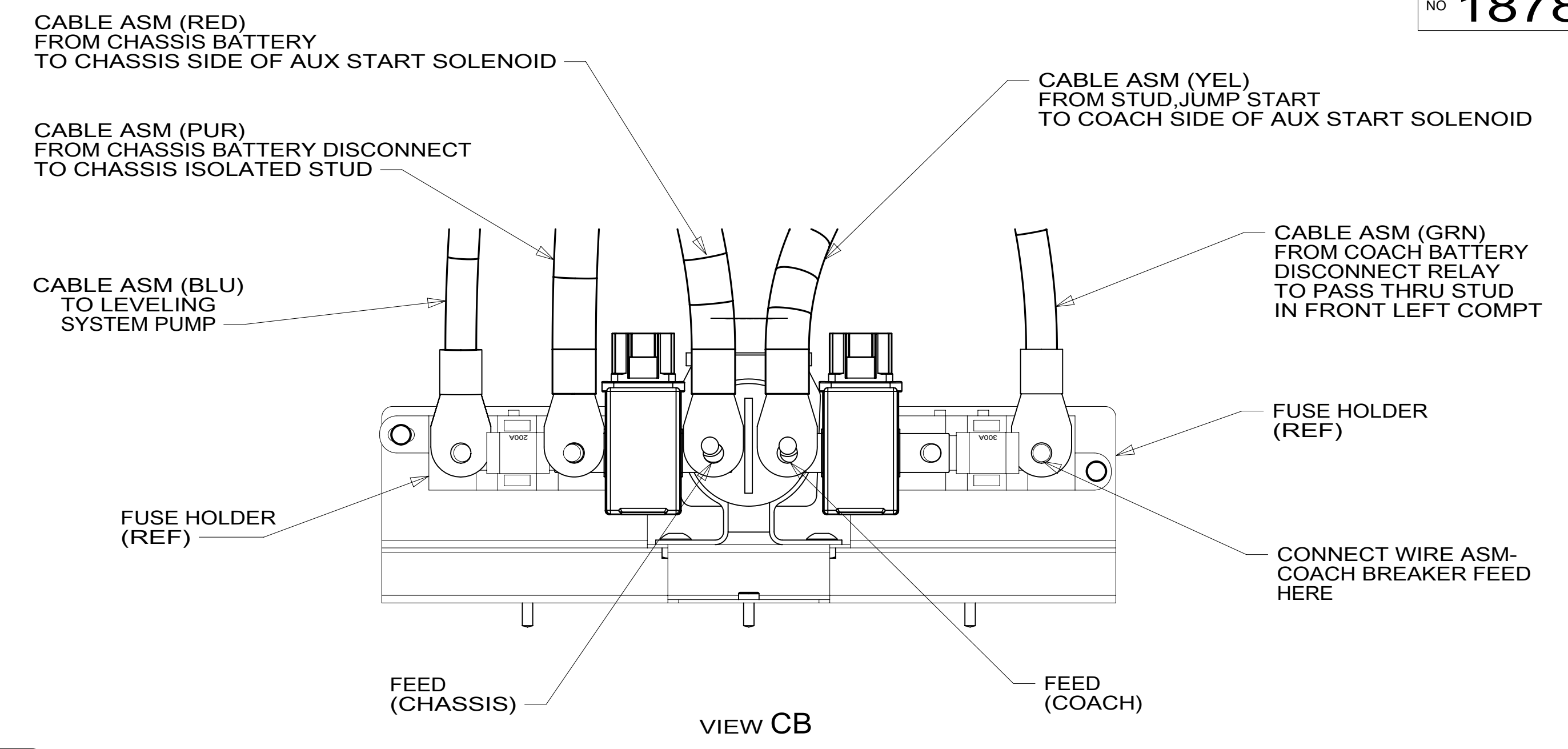
SHEET 2 PART NO **187886** REV

187886

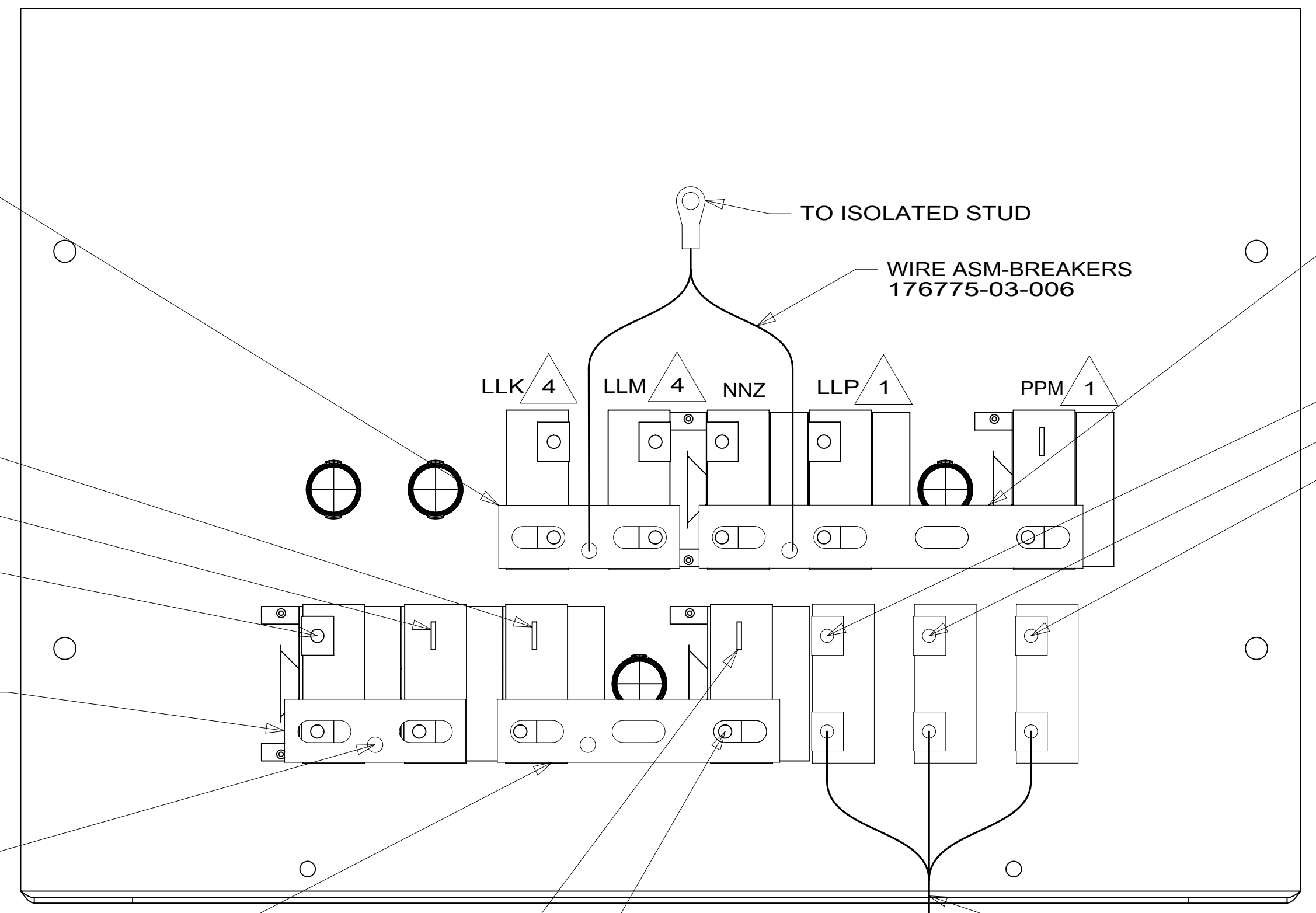


CHASSIS MANUFACTURER'S ELECTRICAL COMPONENTS & REAR FUSE PANEL UNDER LEFT REAR VALANCE DOOR

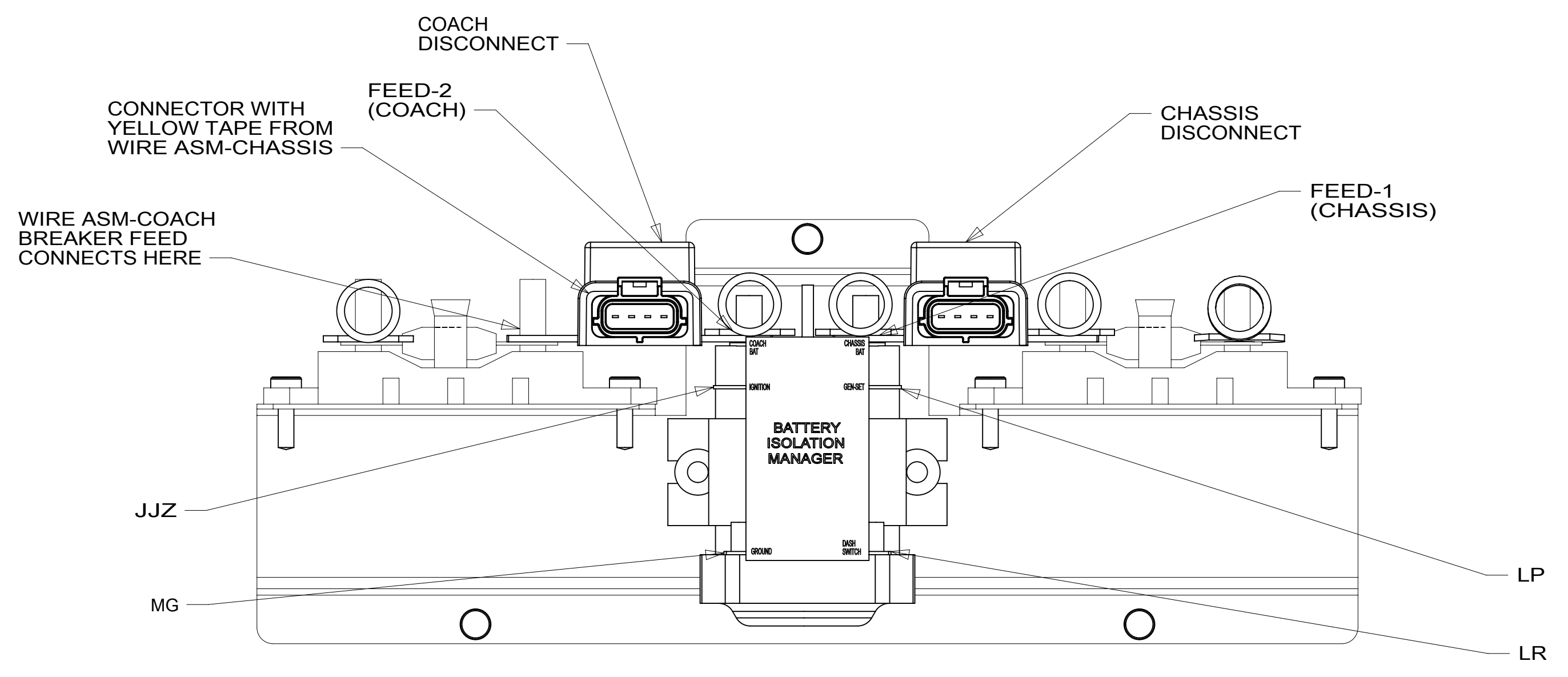
DETAIL CA



VIEW CB



DETAIL CA (BACK VIEW-COMPONENTS)



DETAIL CC 3

- 5 CIRCUIT BREAKER-30 AMP 93655-02-000 (3) SCREW G52-06-05U (3) SPACER-CIRCUIT BREAKER 141789-01-000 (3)
- 5 CIRCUIT BREAKER-15 AMP 93654-02-000 (3) SCREW G52-06-05U (3) SPACER-CIRCUIT BREAKER 141789-01-000 (3)
- CIRCUIT BREAKER-55 AMP 113482-01-000 (3)

- CIRCUIT BREAKER-40 AMP 93655-03-000 (2) SCREW G19-10-08U (2) 5
- PLUG-PLASTIC 81211-06-000 (5) 29W 81211-06-000 (4) 282
- LABEL-CIRCUIT BREAKER 93236-77-000
- CIRCUIT BREAKER-20 AMP 93654-03-000 SCREW G52-06-05U SPACER-CIRCUIT BREAKER 141789-01-000 282

- BUSS BAR 141744-01-000
- 2 GJ
- 1 UUG
- 1 SJ
- BUSS BAR 141744-01-000
- 1 FEED-1 (CHASSIS)
- 282 BUSS BAR 141744-02-000
- 1 LJ
- 1 FEED-2 (COACH)
- TO ISOLATED STUD
- WIRE ASM-BREAKERS 176775-03-006
- BUSS BAR 141744-03-000
- Z 6 BLK 1
- K 6 BLK 1
- J 6 BLK 1
- LLK 4
- LLM 4
- NNZ
- LLP 1
- PPM 1
- WIRE ASM-COACH BREAKER FEED 176775-02-009
- FROM DISCONNECTED SIDE OF COACH DISCONNECT

- COACH DISCONNECT
- CONNECTOR WITH YELLOW TAPE FROM WIRE ASM-CHASSIS
- FEED-2 (COACH)
- CHASSIS DISCONNECT
- FEED-1 (CHASSIS)
- WIRE ASM-COACH BREAKER FEED CONNECTS HERE
- JJZ
- MG
- LP
- LR

- NOTES:
- 5 REPLACE EXISTING SCREW TO PROPERLY ATTACH BREAKER TO BUSS BAR.
 - 4 FROM WIRE ASM-SLIDEOUT POWER.
 - 3 SEE BATTERY INSTL FOR ADDITIONAL INFORMATION.
 - 2 FROM WIRE ASM-CHASSIS. TIE BACK TO HARNESS WITH 29W
 - 1 CIRCUITS BRANCH FROM WIRE ASM-CHASSIS.

- 29W SOLAR PANEL/BATTERY CHRGR W/O
- 282 SOLAR PANEL - 100 WATT
- 265 CODES/STANDARDS-CSA/CMVSS
- 1B1 CODES/STANDARDS USA

FIRST USED	
15 P36M	
DO NOT SCALE DRAWING	
TITLE: WIRING INSTL-CHASSIS	
SHEET 3	PART NO 187886 REV
09-Jul-2015	

FOR ELECTRICAL TORQUE SPECIFICATIONS SEE DWG NO. 128783-01-000

FOR ELECTRICAL CALLOUTS SEE DWG NO. 121339-01-000

187886 A

8 7 6 5 4 3 2 1

D

D

C

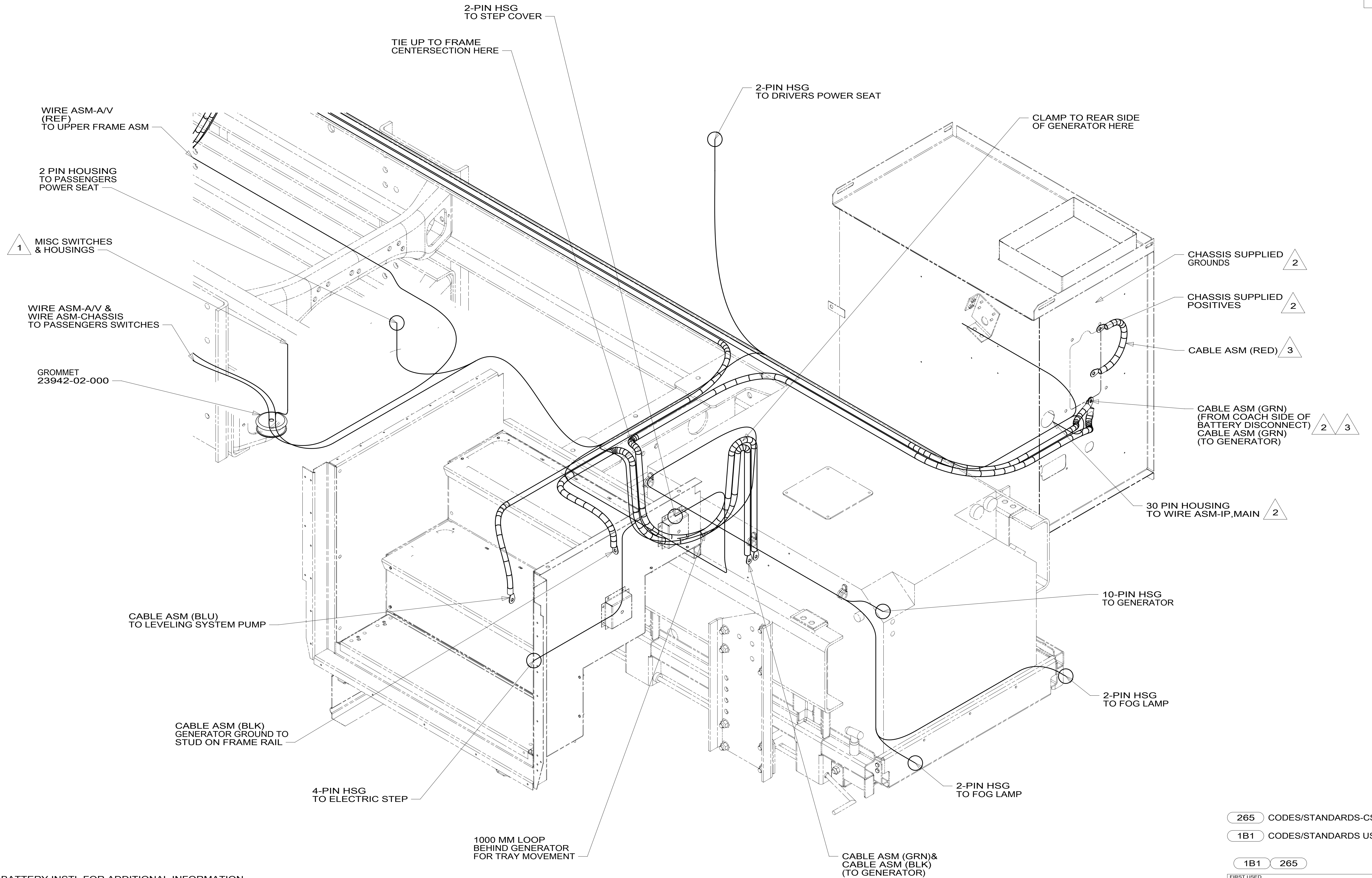
C

B

B

A

A



- NOTES:
- 3 SEE BATTERY INSTL FOR ADDITIONAL INFORMATION.
 - 2 SEE WIRING INSTL-FRONT END FOR ADDITIONAL INFORMATION.
 - 1 SEE WIRE ASM-CHASSIS FOR ADDITIONAL INFORMATION

VIEW DA

FOR ELECTRICAL TORQUE SPECIFICATIONS SEE DWG NO. 128783-01-000

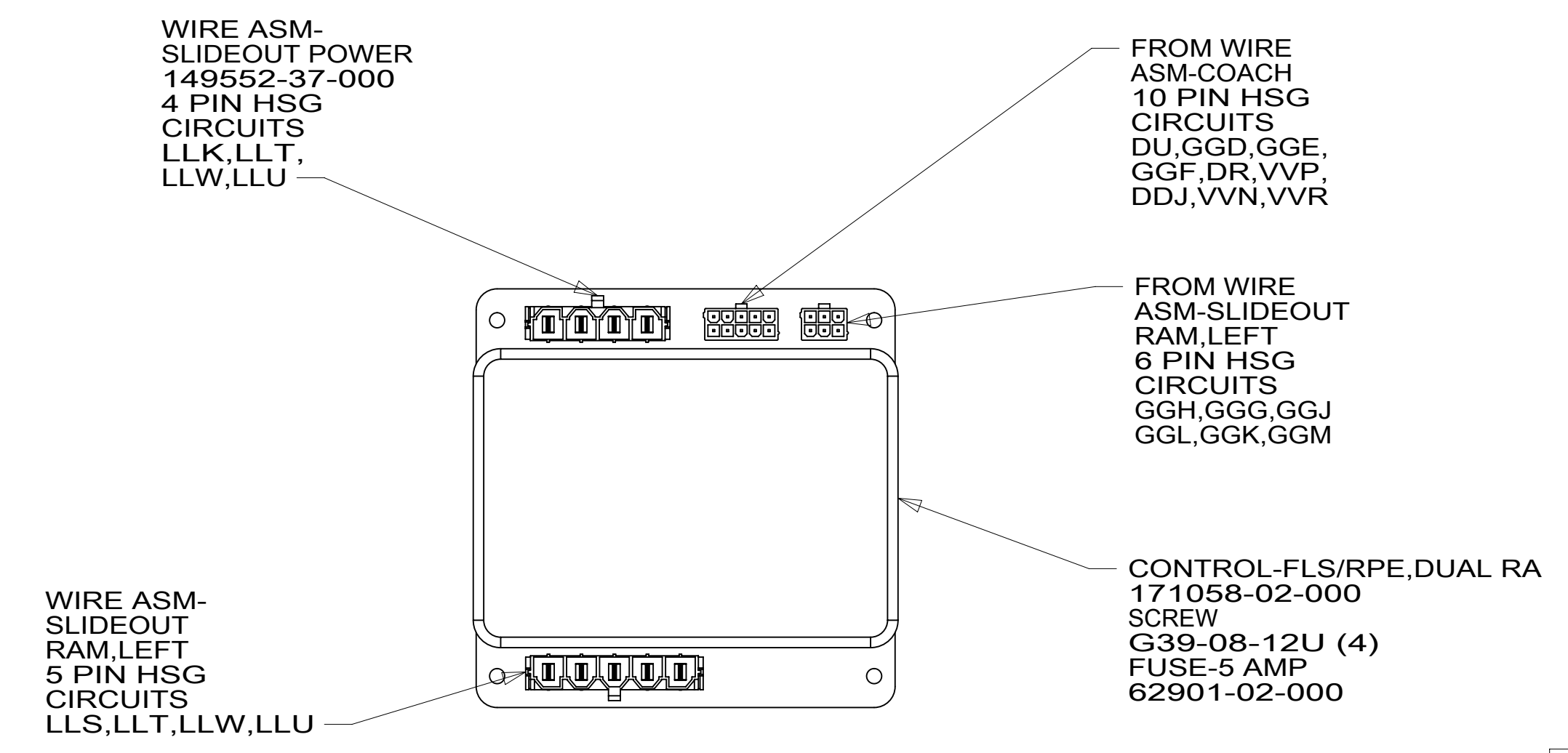
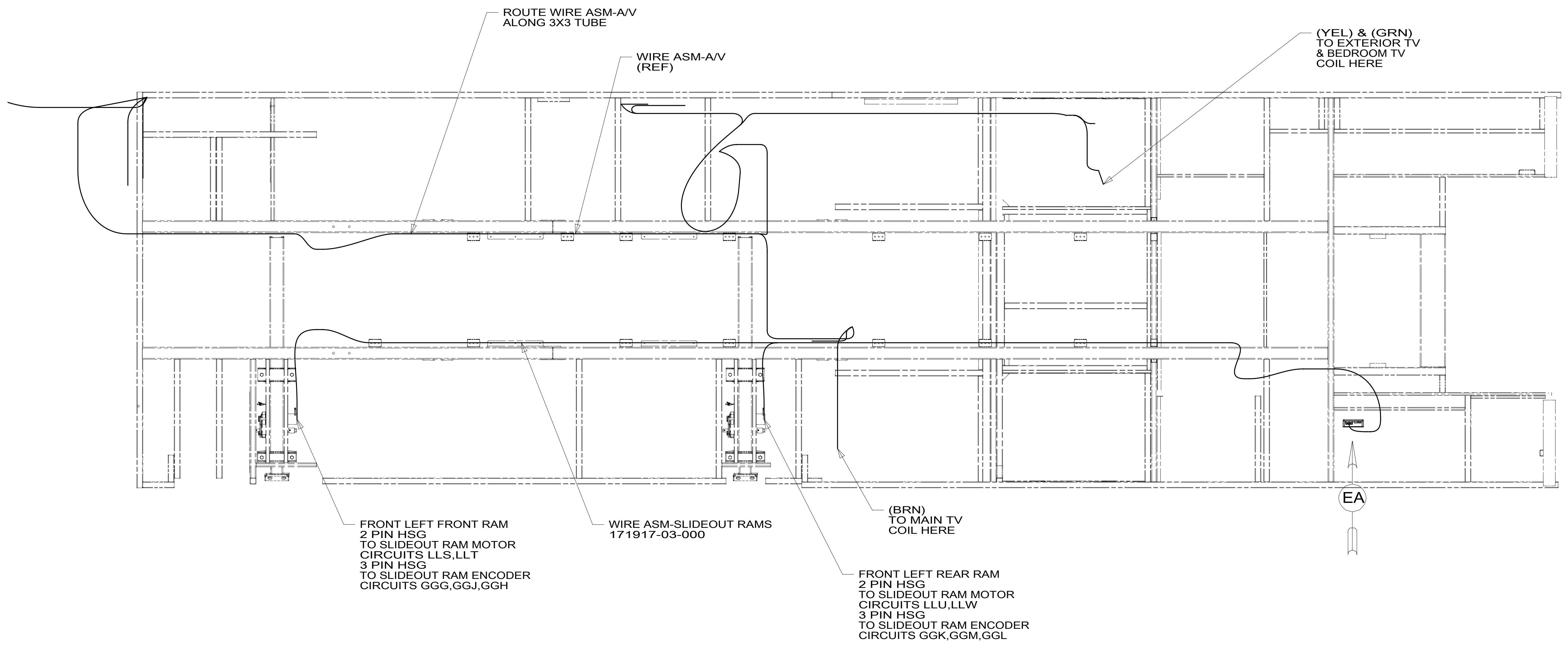
FOR ELECTRICAL CALLOUTS SEE DWG NO. 121339-01-000

- 265 CODES/STANDARDS-CSA/CMVSS
- 1B1 CODES/STANDARDS USA
- 1B1 265

FIRST USED	
15 P36M	
DO NOT SCALE DRAWING	
TITLE: WIRING INSTL-CHASSIS	
SHEET 4	PART NO 187886 REV
1 09-Jul-2015	

8 7 6 5 4 3 2 1

187886



VIEW EA
(LOCATED BEHIND CHASSIS BREAKER PANEL)

NOTES:
1. ALL WIRES TO BE CLAMPED WITH 10495-01-000 OR WIRE TIE 8343-02-000 EVERY 600MM, UNLESS OTHERWISE SPECIFIED.

FOR ELECTRICAL TORQUE SPECIFICATIONS SEE DWG NO. 128783-01-000

FOR ELECTRICAL CALLOUTS SEE DWG NO. 121339-01-000

265	CODES/STANDARDS-CSA/CMVSS
1B1	CODES/STANDARDS USA
1B1	265

FIRST USED	
15 P36M	
DO NOT SCALE DRAWING	
TITLE: WIRING INSTL-CHASSIS	
SHEET 5	PART NO 187886 REV
1 09-Jul-2015	

187886