



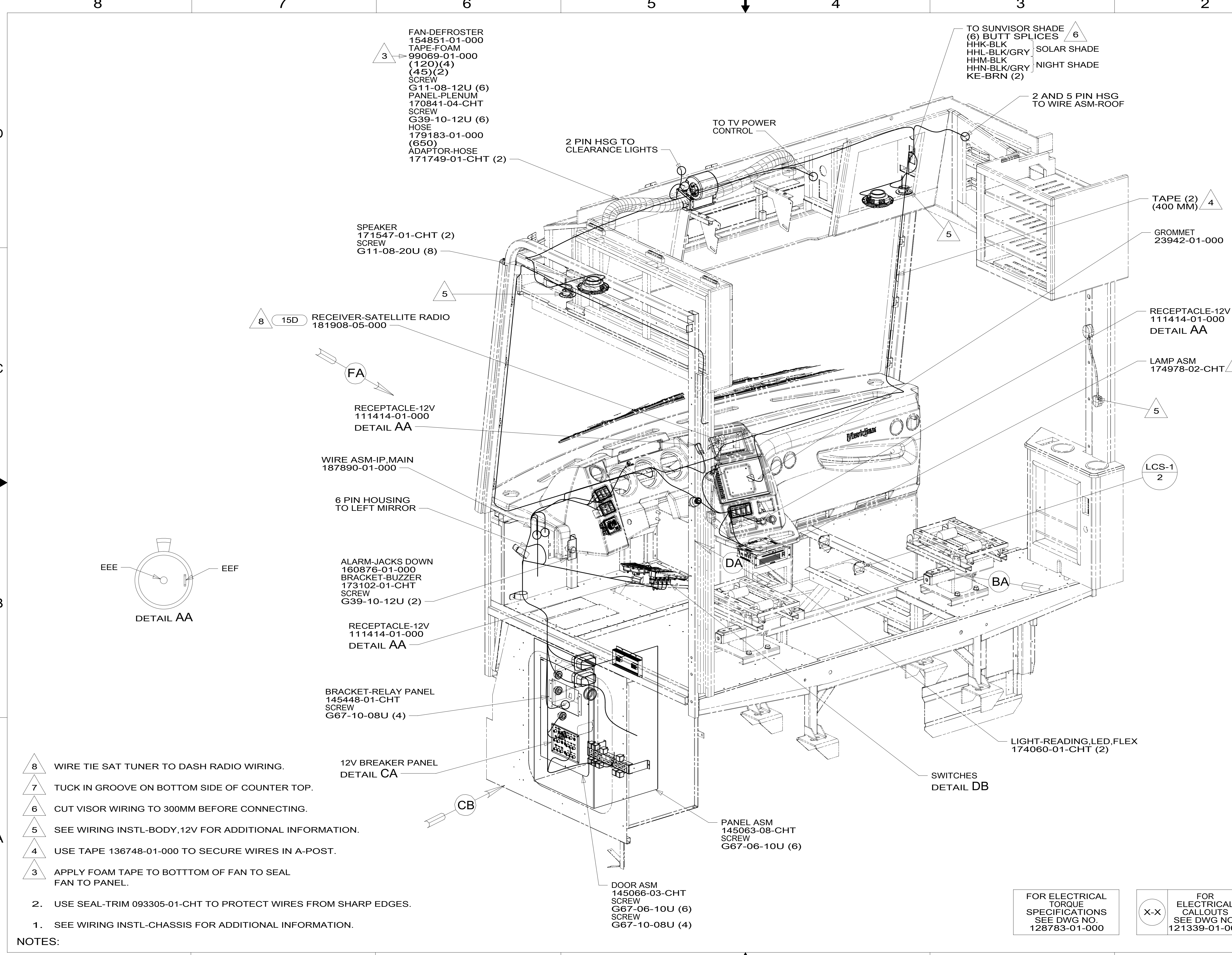
**DANGER**

**Danger of electrical shock, burns or death.** Always remove all power sources before attempting any repair, service or diagnostic work. Power can be present from shore power, generator, inverter or battery. All power sources must be disabled and secured before performing any service.



**CAUTION**

If you lack the skills, tools or equipment to perform diagnostic or repair work leave such work to an authorized Winnebago Industries dealer or other qualified shop.



FAN-DEFROSTER  
 154851-01-000  
 TAPE-FOAM  
 99069-01-000  
 (120)(4)  
 (45)(2)  
 SCREW  
 G11-08-12U (6)  
 PANEL-PLENUM  
 170841-04-CHT  
 SCREW  
 G39-10-12U (6)  
 HOSE  
 179183-01-000  
 (650)  
 ADAPTOR-HOSE  
 171749-01-CHT (2)

TO SUNVISOR SHADE (6) BUTT SPLICES  
 HHK-BLK  
 HHL-BLK/GRY SOLAR SHADE  
 HHM-BLK  
 HHN-BLK/GRY NIGHT SHADE  
 KE-BRN (2)

TAPE (2)  
 (400 MM) 4  
 GROMMET  
 23942-01-000

8 15D RECEIVER-SATELLITE RADIO  
 181908-05-000

SPEAKER  
 171547-01-CHT (2)  
 SCREW  
 G11-08-20U (8)

RECEPTACLE-12V  
 111414-01-000  
 DETAIL AA

LAMP ASM  
 174978-02-CHT 7

RECEPTACLE-12V  
 111414-01-000  
 DETAIL AA

WIRE ASM-IP,MAIN  
 187890-01-000

6 PIN HOUSING  
 TO LEFT MIRROR

ALARM-JACKS DOWN  
 160876-01-000  
 BRACKET-BUZZER  
 173102-01-CHT  
 SCREW  
 G39-10-12U (2)

RECEPTACLE-12V  
 111414-01-000  
 DETAIL AA

BRACKET-RELAY PANEL  
 145448-01-CHT  
 SCREW  
 G67-10-08U (4)

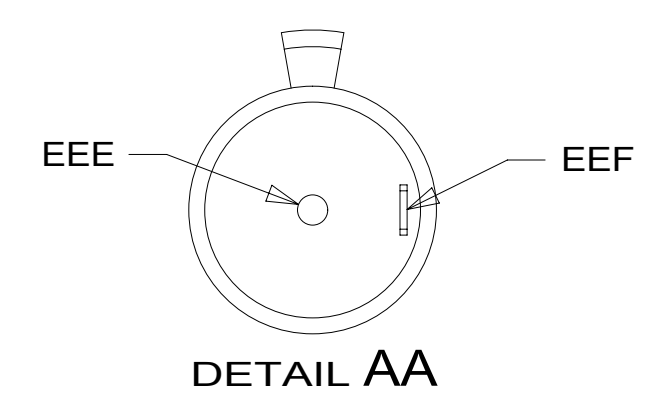
12V BREAKER PANEL  
 DETAIL CA

PANEL ASM  
 145063-08-CHT  
 SCREW  
 G67-06-10U (6)

DOOR ASM  
 145066-03-CHT  
 SCREW  
 G67-06-10U (6)  
 SCREW  
 G67-10-08U (4)

LIGHT-READING,LED,FLEX  
 174060-01-CHT (2)

SWITCHES  
 DETAIL DB



- 8 WIRE TIE SAT TUNER TO DASH RADIO WIRING.
- 7 TUCK IN GROOVE ON BOTTOM SIDE OF COUNTER TOP.
- 6 CUT VISOR WIRING TO 300MM BEFORE CONNECTING.
- 5 SEE WIRING INSTL-BODY,12V FOR ADDITIONAL INFORMATION.
- 4 USE TAPE 136748-01-000 TO SECURE WIRES IN A-POST.
- 3 APPLY FOAM TAPE TO BOTTTOM OF FAN TO SEAL FAN TO PANEL.

- 2. USE SEAL-TRIM 093305-01-CHT TO PROTECT WIRES FROM SHARP EDGES.
- 1. SEE WIRING INSTL-CHASSIS FOR ADDITIONAL INFORMATION.

NOTES:

FOR ELECTRICAL  
 TORQUE  
 SPECIFICATIONS  
 SEE DWG NO.  
 128783-01-000

FOR  
 ELECTRICAL  
 CALLOUTS  
 SEE DWG NO.  
 121339-01-000

- 15D INFOTAINMENT CENTER/GPS
- 265 CODES/STANDARDS-CSA/CMVSS
- 1B1 CODES/STANDARDS USA

1B1 265

**WINNEBAGO** INDUSTRIES, INC. COPYRIGHT 2014

DFT-ORIG	ORIG. DATE
CHKR	ALL DIMENSIONS ARE IN MILLIMETERS
P.E.	
M.E.	FIRST USED
DSNR	<b>15 P-SERIES</b>

UNSPECIFIED TOLERANCES ARE:

WHOLE DIM (X)	: 1
ONE-PLACE (X.X)	: 1
TWO-PLACE (X.XX)	: 1
ANGLE	: 1

THIRD ANGLE PROJECTION

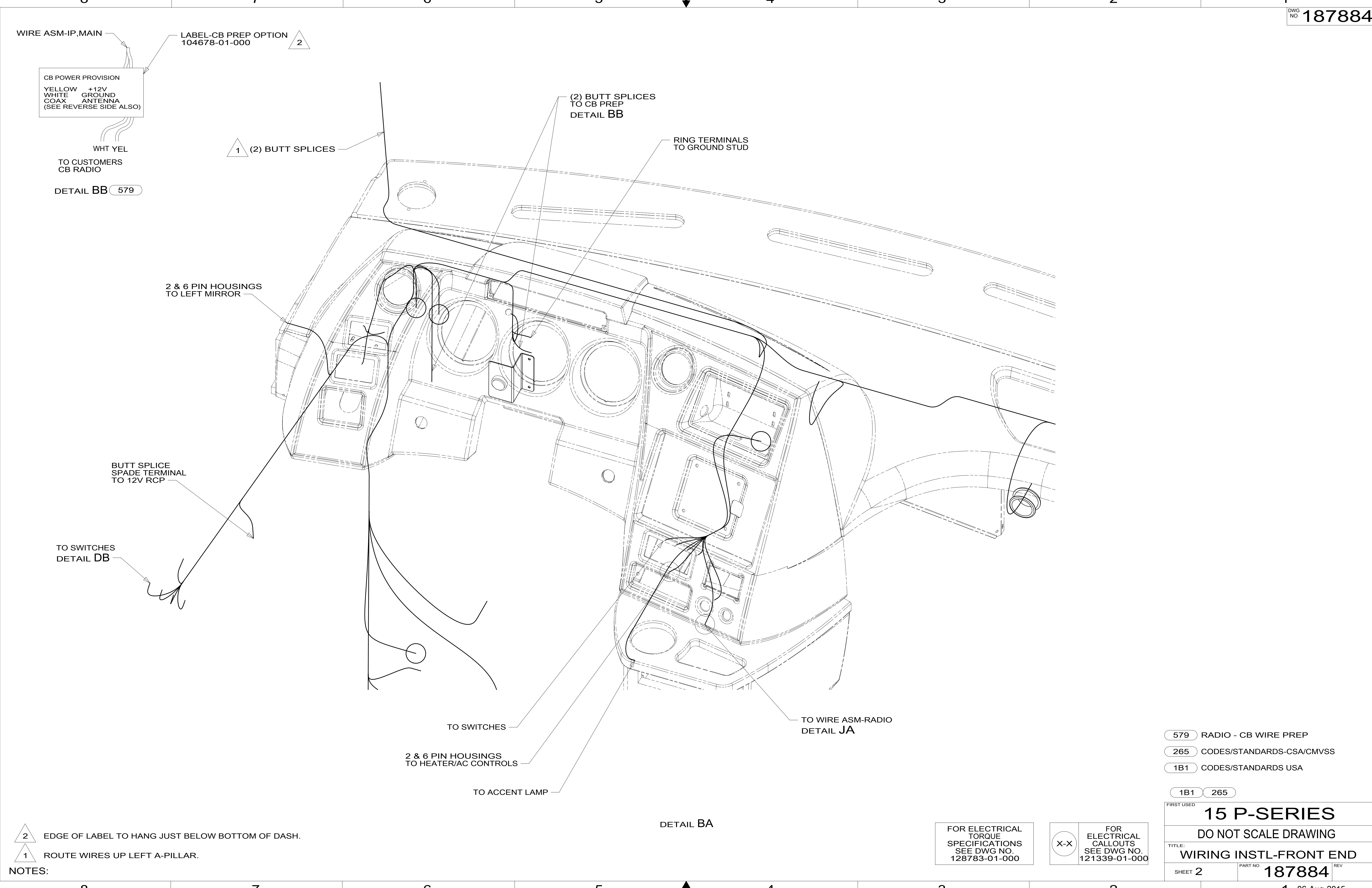
DO NOT SCALE DRAWING REFER TO ES0018 FOR FASTENER TIGHTENING GUIDELINES

TITLE: **WIRING INSTL-FRONT END**

SHEET 1 OF 9 PART NO. **187884** REV

REF: 1 06-Aug-2015

\*187884 A



- 2 EDGE OF LABEL TO HANG JUST BELOW BOTTOM OF DASH.
- 1 ROUTE WIRES UP LEFT A-PILLAR.

NOTES:

- 579 RADIO - CB WIRE PREP
- 265 CODES/STANDARDS-CSA/CMVSS
- 1B1 CODES/STANDARDS USA

1B1 265

FIRST USED **15 P-SERIES**

DO NOT SCALE DRAWING

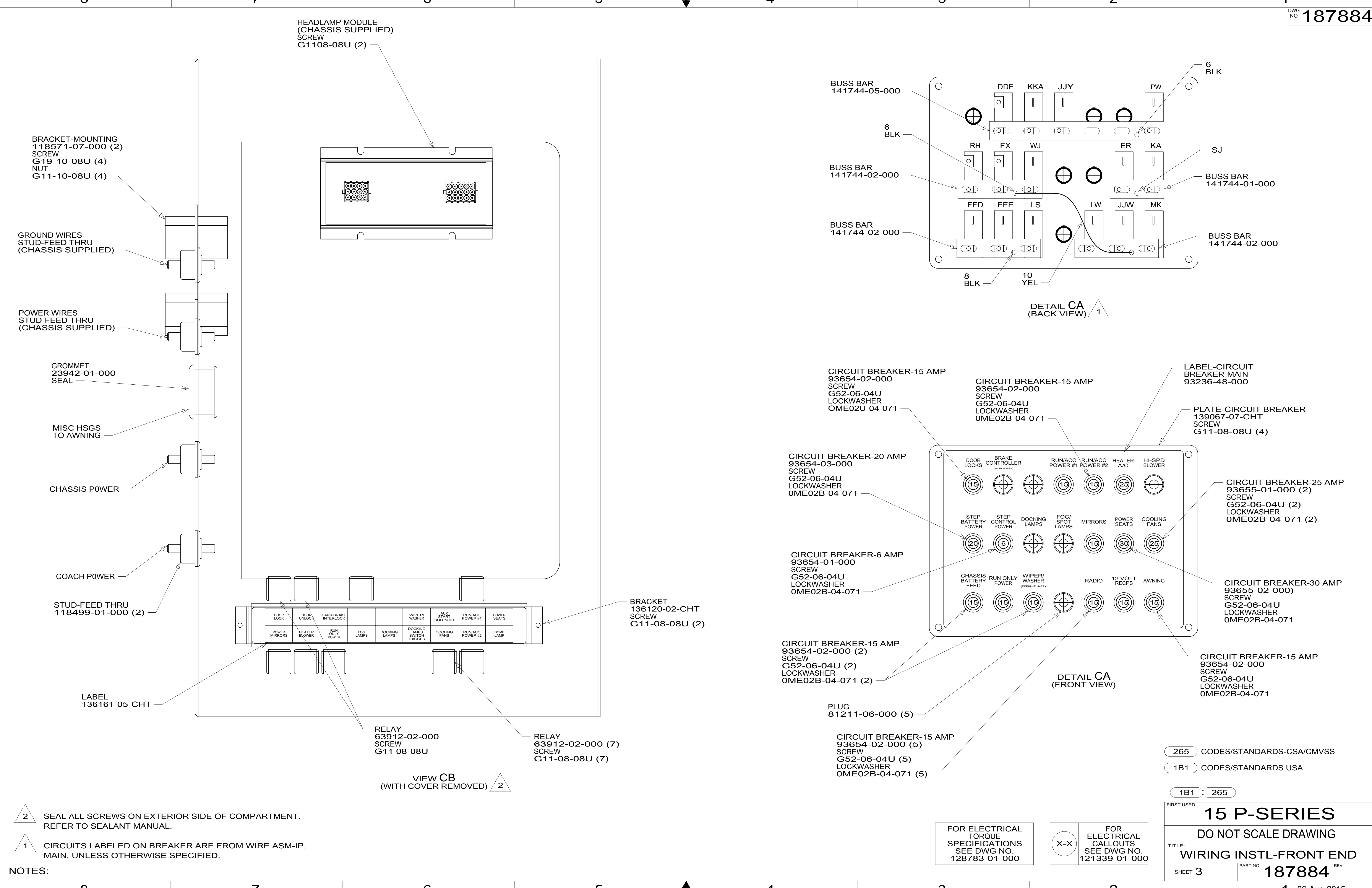
TITLE: **WIRING INSTL-FRONT END**

SHEET 2 PART NO **187884** REV

FOR ELECTRICAL TORQUE SPECIFICATIONS SEE DWG NO. 128783-01-000

FOR ELECTRICAL CALLOUTS SEE DWG NO. 121339-01-000

\*187884 \*A



HEADLAMP MODULE  
(CHASSIS SUPPLIED)  
SCREW  
G1108-08U (2)

BRACKET-MOUNTING  
118571-07-000 (2)  
SCREW  
G19-10-08U (4)  
NUT  
G11-10-08U (4)

GROUND WIRES  
STUD-FEED THRU  
(CHASSIS SUPPLIED)

POWER WIRES  
STUD-FEED THRU  
(CHASSIS SUPPLIED)

GROMMET  
23942-01-000  
SEAL

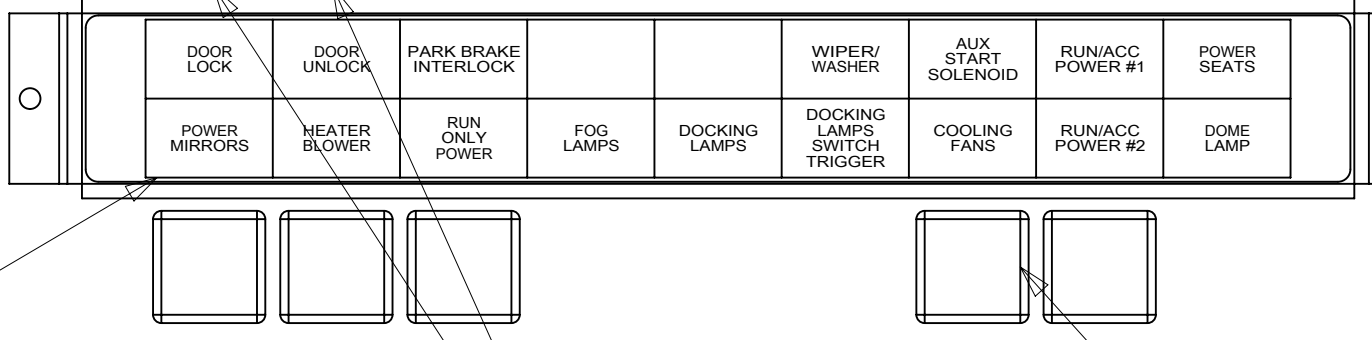
MISC HSGS  
TO AWNING

CHASSIS POWER

COACH POWER

STUD-FEED THRU  
118499-01-000 (2)

LABEL  
136161-05-CHT



RELAY  
63912-02-000  
SCREW  
G11 08-08U

RELAY  
63912-02-000 (7)  
SCREW  
G11-08-08U (7)

BRACKET  
136120-02-CHT  
SCREW  
G11-08-08U (2)

VIEW CB  
(WITH COVER REMOVED) 2

BUSS BAR  
141744-05-000

6 BLK

BUSS BAR  
141744-02-000

BUSS BAR  
141744-02-000

8 BLK

DETAIL CA  
(BACK VIEW) 1

CIRCUIT BREAKER-15 AMP  
93654-02-000  
SCREW  
G52-06-04U  
LOCKWASHER  
OME02U-04-071

CIRCUIT BREAKER-15 AMP  
93654-02-000  
SCREW  
G52-06-04U  
LOCKWASHER  
OME02B-04-071

LABEL-CIRCUIT  
BREAKER-MAIN  
93236-48-000

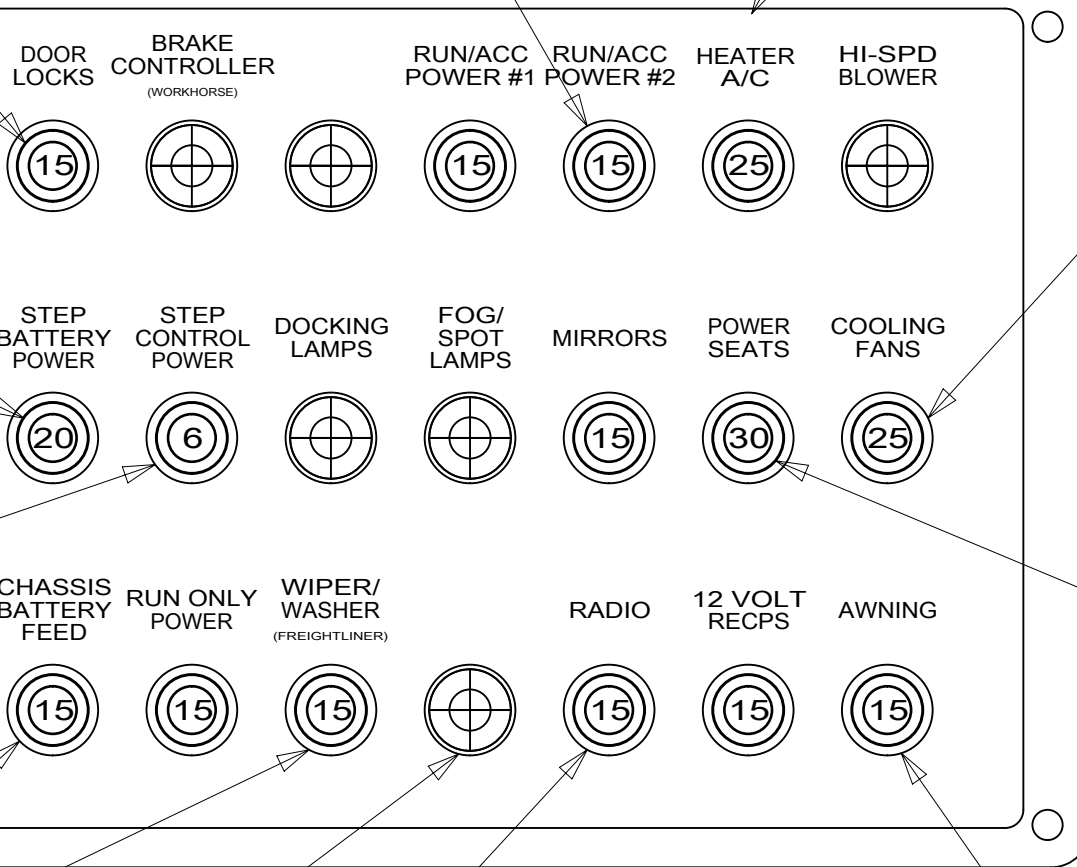
PLATE-CIRCUIT BREAKER  
139067-07-CHT  
SCREW  
G11-08-08U (4)

CIRCUIT BREAKER-20 AMP  
93654-03-000  
SCREW  
G52-06-04U  
LOCKWASHER  
OME02B-04-071

CIRCUIT BREAKER-6 AMP  
93654-01-000  
SCREW  
G52-06-04U  
LOCKWASHER  
OME02B-04-071

CIRCUIT BREAKER-15 AMP  
93654-02-000 (2)  
SCREW  
G52-06-04U (2)  
LOCKWASHER  
OME02B-04-071 (2)

CIRCUIT BREAKER-15 AMP  
93654-02-000 (5)  
SCREW  
G52-06-04U (5)  
LOCKWASHER  
OME02B-04-071 (5)



CIRCUIT BREAKER-25 AMP  
93655-01-000 (2)  
SCREW  
G52-06-04U (2)  
LOCKWASHER  
OME02B-04-071 (2)

CIRCUIT BREAKER-30 AMP  
93655-02-000)  
SCREW  
G52-06-04U  
LOCKWASHER  
OME02B-04-071

CIRCUIT BREAKER-15 AMP  
93654-02-000  
SCREW  
G52-06-04U  
LOCKWASHER  
OME02B-04-071

PLUG  
81211-06-000 (5)

DETAIL CA  
(FRONT VIEW)

- NOTES:
- 2 SEAL ALL SCREWS ON EXTERIOR SIDE OF COMPARTMENT. REFER TO SEALANT MANUAL.
  - 1 CIRCUITS LABELED ON BREAKER ARE FROM WIRE ASM-IP, MAIN, UNLESS OTHERWISE SPECIFIED.

FOR ELECTRICAL TORQUE SPECIFICATIONS SEE DWG NO. 128783-01-000

FOR ELECTRICAL CALLOUTS SEE DWG NO. 121339-01-000

- 265 CODES/STANDARDS-CSA/CMVSS
- 1B1 CODES/STANDARDS USA
- 1B1 265

FIRST USED

**15 P-SERIES**

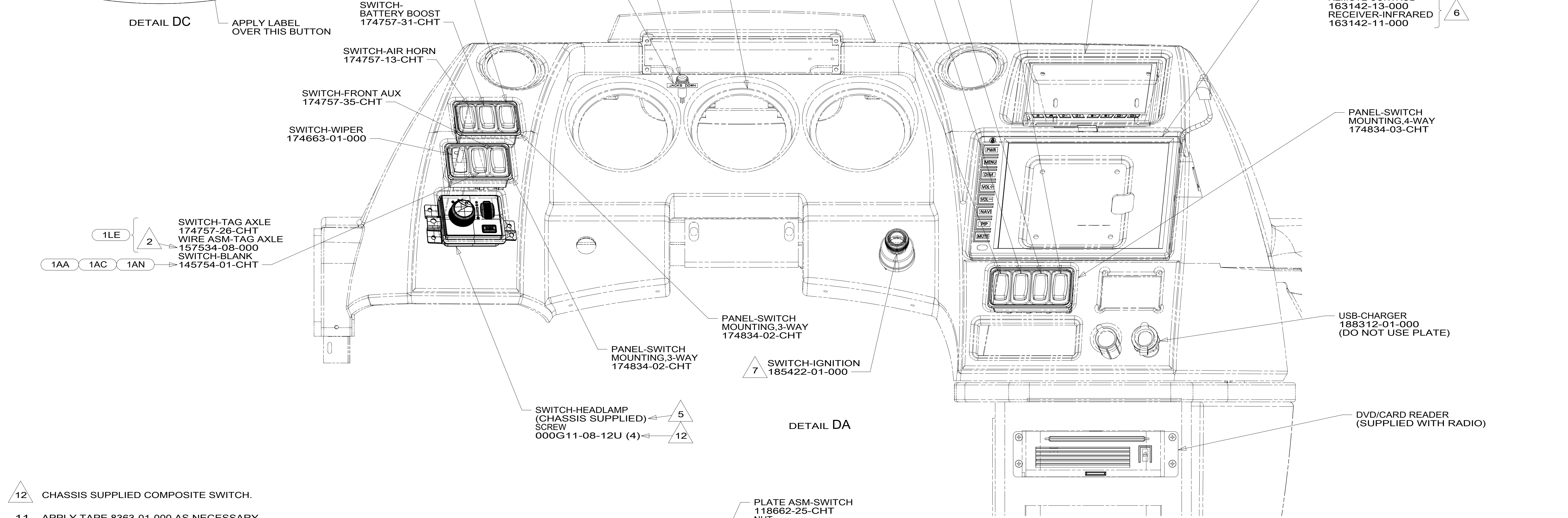
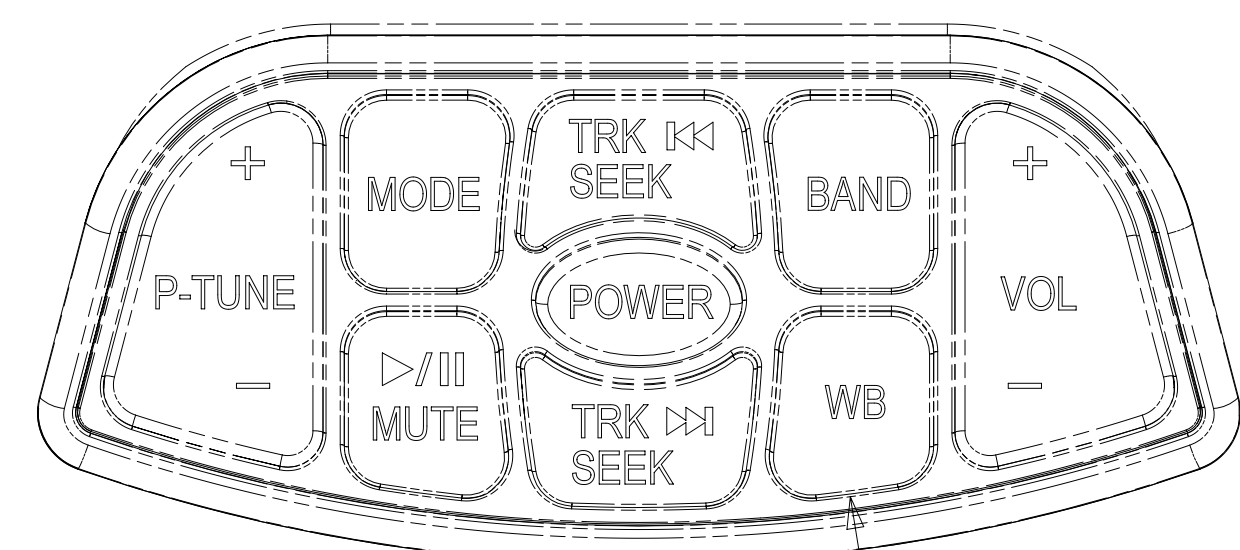
DO NOT SCALE DRAWING

TITLE: **WIRING INSTL-FRONT END**

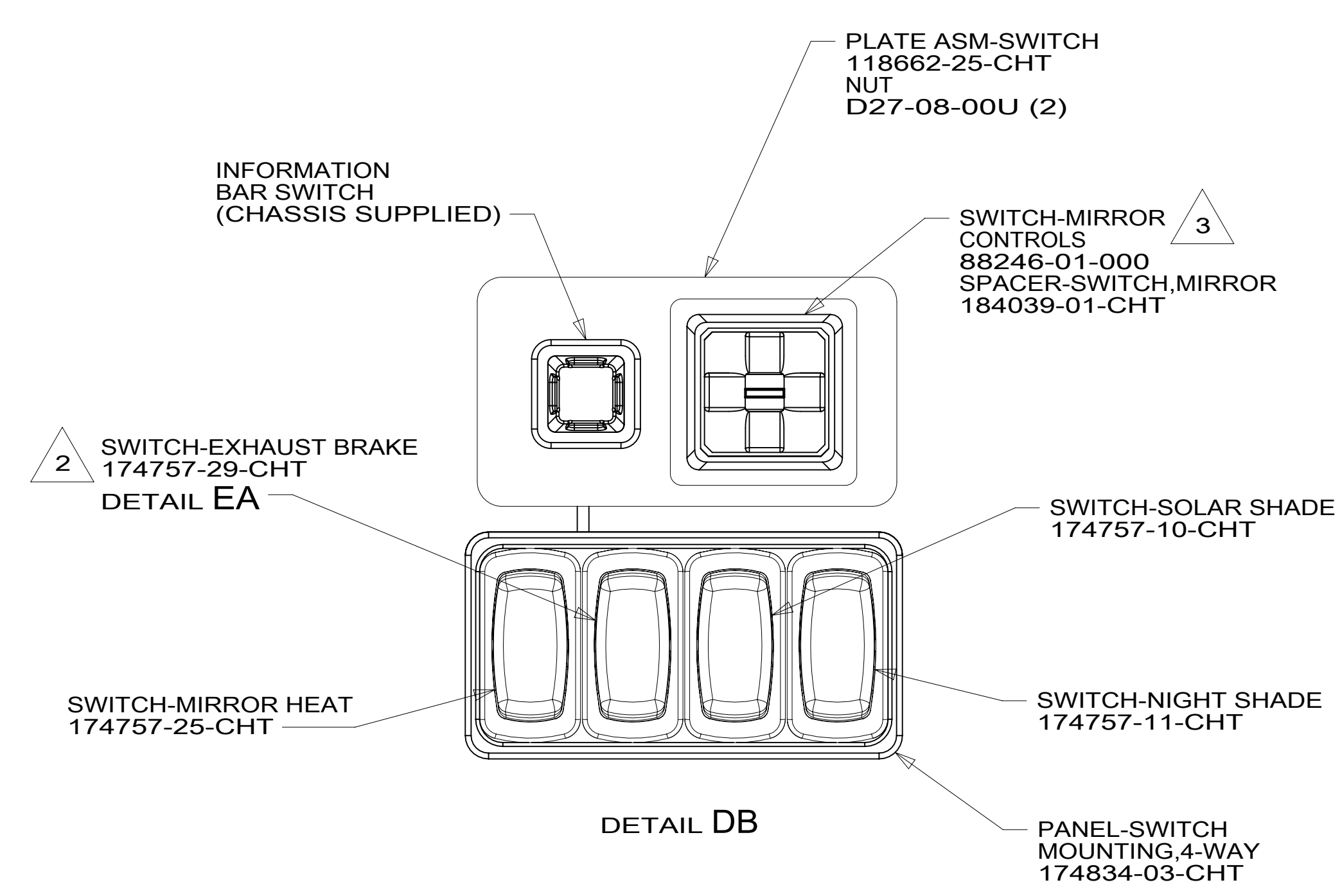
SHEET 3 PART NO **187884** REV

06-Aug-2015

\*187884 \*A



- NOTES:**
- 12 CHASSIS SUPPLIED COMPOSITE SWITCH.
  - 11. APPLY TAPE 8363-01-000 AS NECESSARY TO SECURE NON-LOCKING CONNECTIONS.
  - 10 MOUNT GPS ANTENNA ON TOP OF DEFROST PLENUM.
  - 9 APPLY LABEL OVER "WB" BUTTON. SEE DETAIL DC.
  - 8 ROUTE TEMP SENSOR THRU HOLE IN BULKHEAD TO BRACKET (SEE SHEET 6).
  - 7 REMOVE AND REPLACE CHASSIS SUPPLIED IGNITION SWITCH.
  - 6 INSTALL PER DRAWING 170205.
  - 5 CHASSIS SUPPLIED ROCKER SWITCHES. DOME LAMP SWITCH NOT USED. SEE DETAIL DD FOR SWITCH POSITION.
  - 4 SEE SHEET 5 FOR GAUGE PLACEMENT.
  - 3 MOUNT SWITCH SO WHEN ACTUATOR IS PUSHED LEFT, THE LETTER L IS SHOWING.
  - 2 CONNECT TO MATING LABELED CONNECTOR ON CHASSIS SUPPLIED WIRING.
  - 1 CONNECT POSITIVE WIRE TO TERMINAL MARKED WITH RED, YEL-WINNEBAGO WIRING RED-HWH WIRING



- 1AN FRTL 37,320 380 8.9L 6 SPD
- 1LE FRTL 44,320 400HP 6SPD TAG
- 1AA FRTL 29,410 340 6.7L 6 SPEED
- 1AC FRTL 32,350 360HP 6.7L 6 SPD
- 15D GPS-NAVIGATION SYSTEM
- 265 CODES/STANDARDS-CSA/CMVSS
- 1B1 CODES/STANDARDS USA

FOR ELECTRICAL TORQUE SPECIFICATIONS SEE DWG NO. 128783-01-000

FOR ELECTRICAL CALLOUTS SEE DWG NO. 121339-01-000

1B1 265

FIRST USED

**15 P-SERIES**

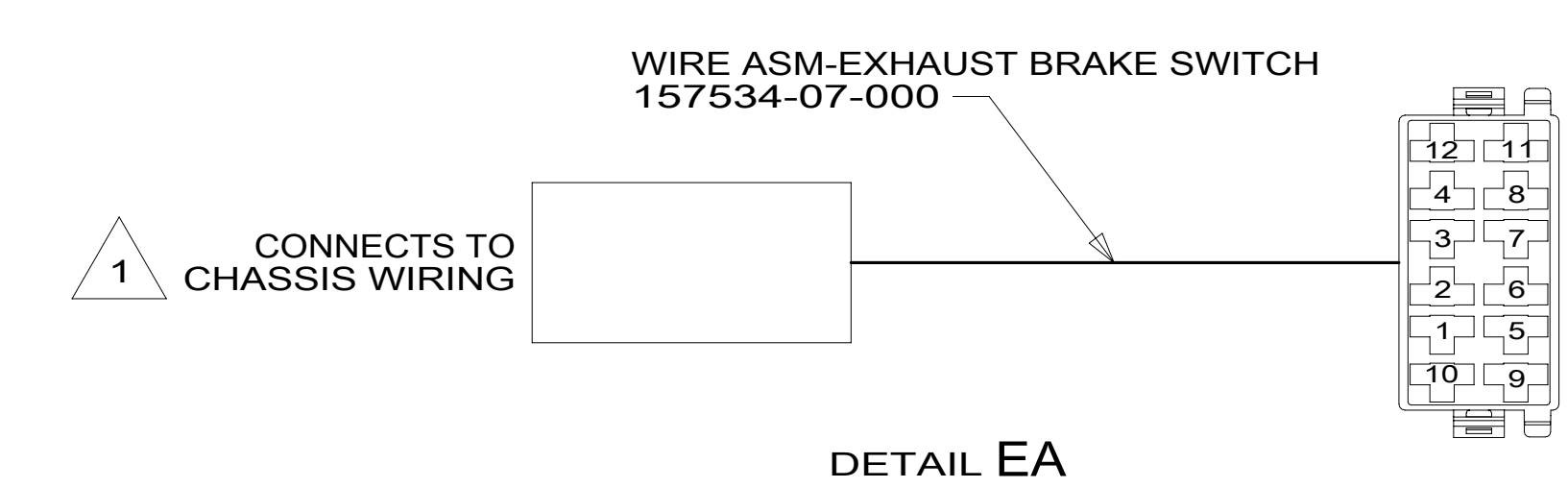
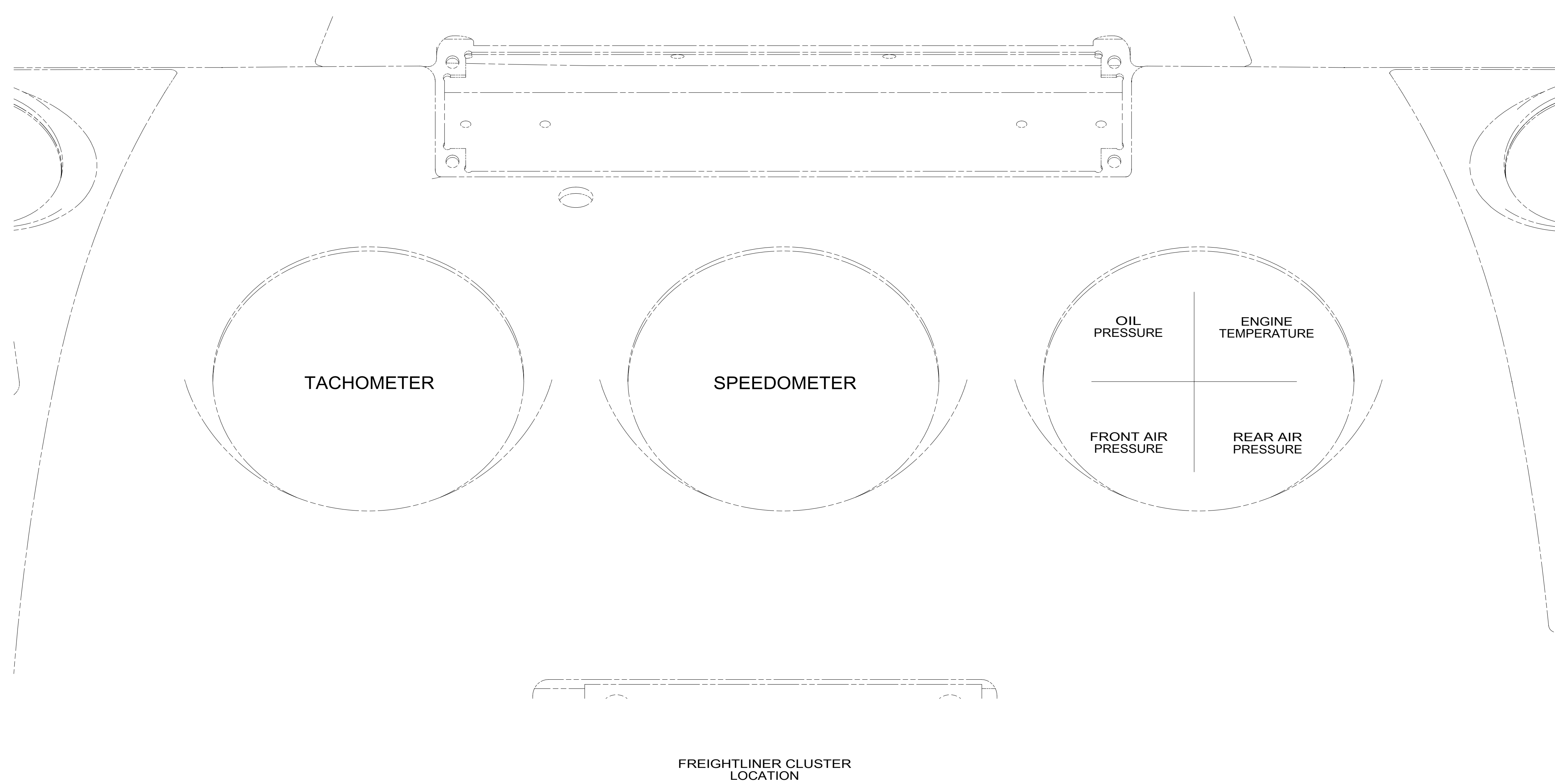
DO NOT SCALE DRAWING

TITLE: **WIRING INSTL-FRONT END**

SHEET 4 PART NO **187884** REV

1 06-Aug-2015

\*187884\*



1 CHASSIS WIRING HAS MATING CONNECTOR AND IS LABELED "ENGINE BRAKE SWITCH"

FOR ELECTRICAL TORQUE SPECIFICATIONS SEE DWG NO. 128783-01-000

X-X FOR ELECTRICAL CALLOUTS SEE DWG NO. 121339-01-000

265 CODES/STANDARDS-CSA/CMVSS  
1B1 CODES/STANDARDS USA  
1B1 265

FIRST USED  
**15 P-SERIES**  
DO NOT SCALE DRAWING  
TITLE: **WIRING INSTL-FRONT END**  
SHEET 5 PART NO **187884** REV

\*187884 \*A

8

7

6

5

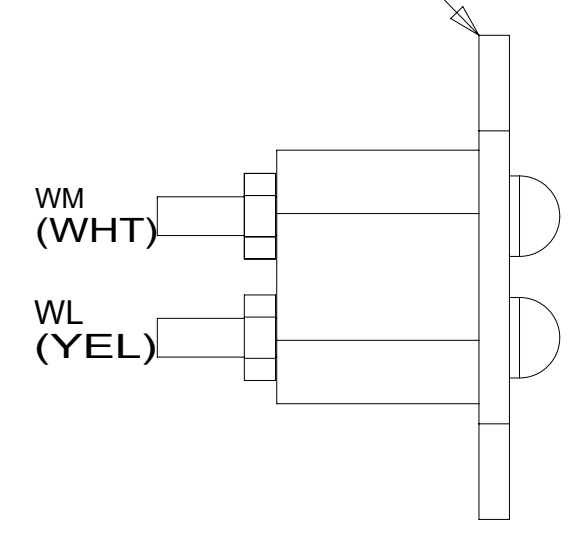
4

3

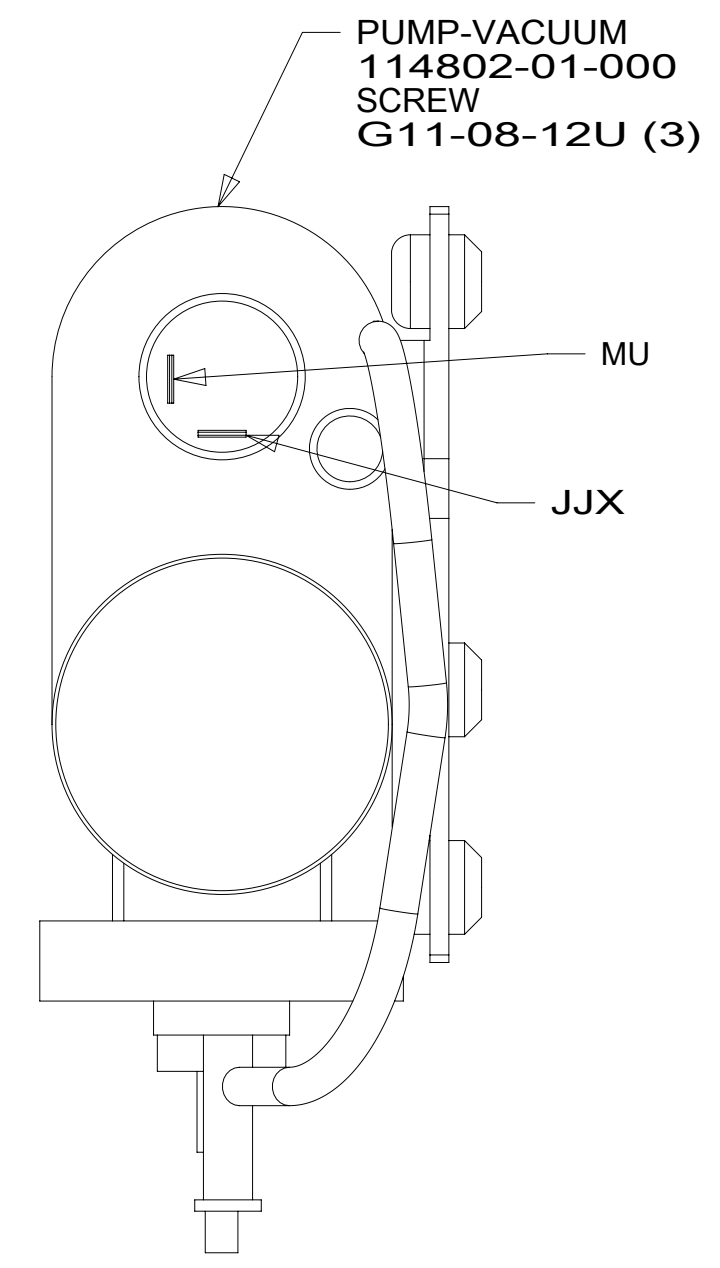
2

1

THIS SIDE POINTED TO TOP OF DOOR



DETAIL FC



DETAIL FB

2 PIN HOUSING AND REAR CAMERA CABLE TO RIGHT MIRROR

TO DOOR CONNECTION SEE DETAIL FC

TO STEP LIGHTS

WIRE ASM-DOOR LOCK (FROM SIDEWALL-DETAIL FC)

4 PIN HOUSING TO WIRE ASM-DOOR LOCK IN SIDEWALL

2 PIN HOUSING TO WASHER BOTTLE

WIRE ASM-IP,MAIN FROM INTERIOR

TO EVAPORATOR THERMOSTAT AND A/C BINARY SWITCH

RELAY 177459-01-000 (3)  
SCREW G39-10-08U (3)

2 PIN HOUSING TO VACUUM PUMP  
DETAIL FB

4 PIN HOUSING TO WIRE ASM-HEADLAMP

TEMP SENSOR (REF)

BRACKET-ZEE,TEMP SENSOR 147428-01-CHT  
SCREW G39-08-08U (2)

VIEW FA

265 CODES/STANDARDS-CSA/CMVSS

1B1 CODES/STANDARDS USA

1B1 265

FIRST USED **15 P-SERIES**

DO NOT SCALE DRAWING

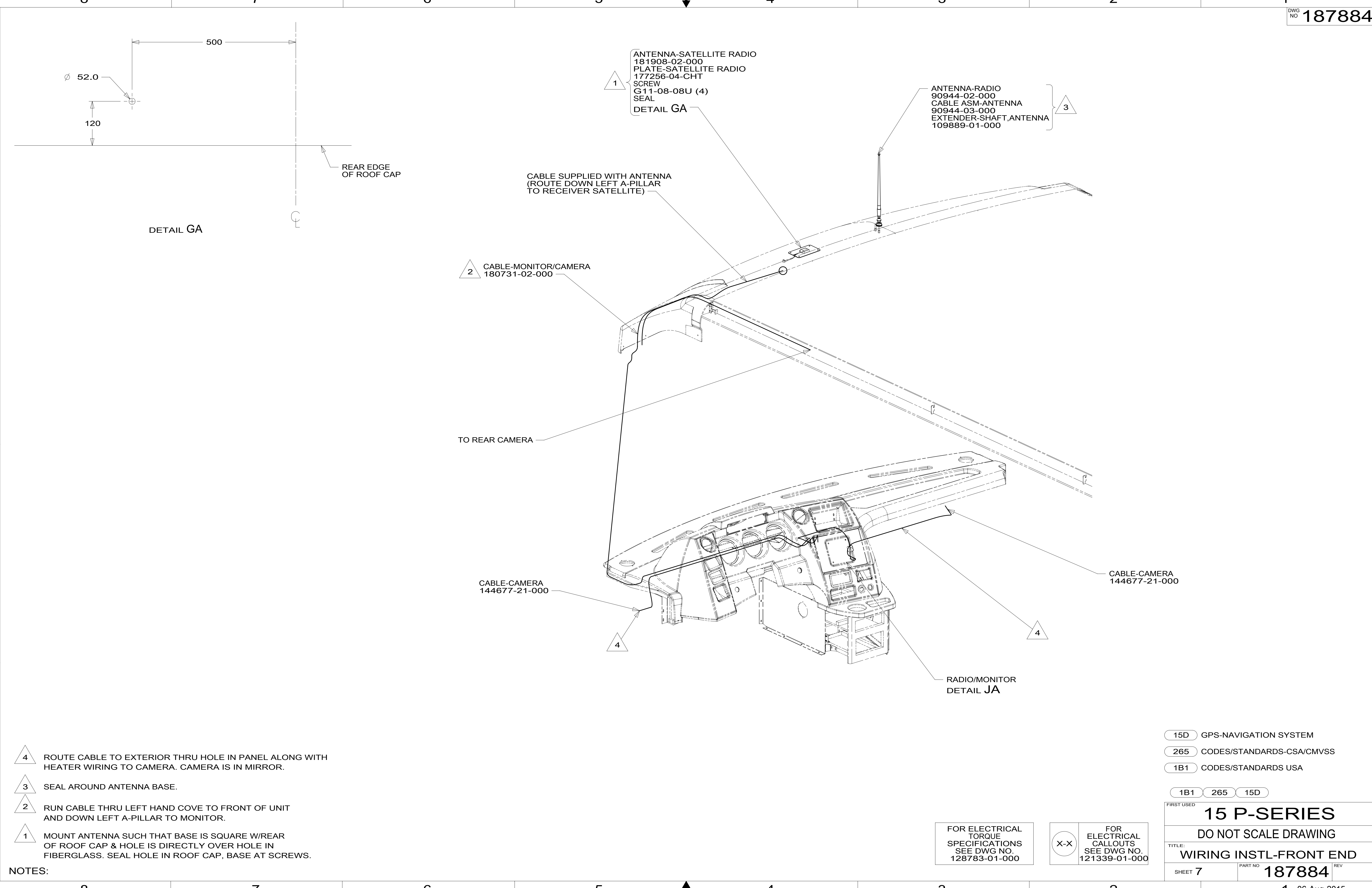
TITLE: **WIRING INSTL-FRONT END**

SHEET 6 PART NO **187884** REV

FOR ELECTRICAL TORQUE SPECIFICATIONS SEE DWG NO. 128783-01-000

FOR ELECTRICAL CALLOUTS SEE DWG NO. 121339-01-000

\*187884\*



- NOTES:
- 4 ROUTE CABLE TO EXTERIOR THRU HOLE IN PANEL ALONG WITH HEATER WIRING TO CAMERA. CAMERA IS IN MIRROR.
  - 3 SEAL AROUND ANTENNA BASE.
  - 2 RUN CABLE THRU LEFT HAND COVE TO FRONT OF UNIT AND DOWN LEFT A-PILLAR TO MONITOR.
  - 1 MOUNT ANTENNA SUCH THAT BASE IS SQUARE W/REAR OF ROOF CAP & HOLE IS DIRECTLY OVER HOLE IN FIBERGLASS. SEAL HOLE IN ROOF CAP, BASE AT SCREWS.

- 15D GPS-NAVIGATION SYSTEM
- 265 CODES/STANDARDS-CSA/CMVSS
- 1B1 CODES/STANDARDS USA

1B1 265 15D

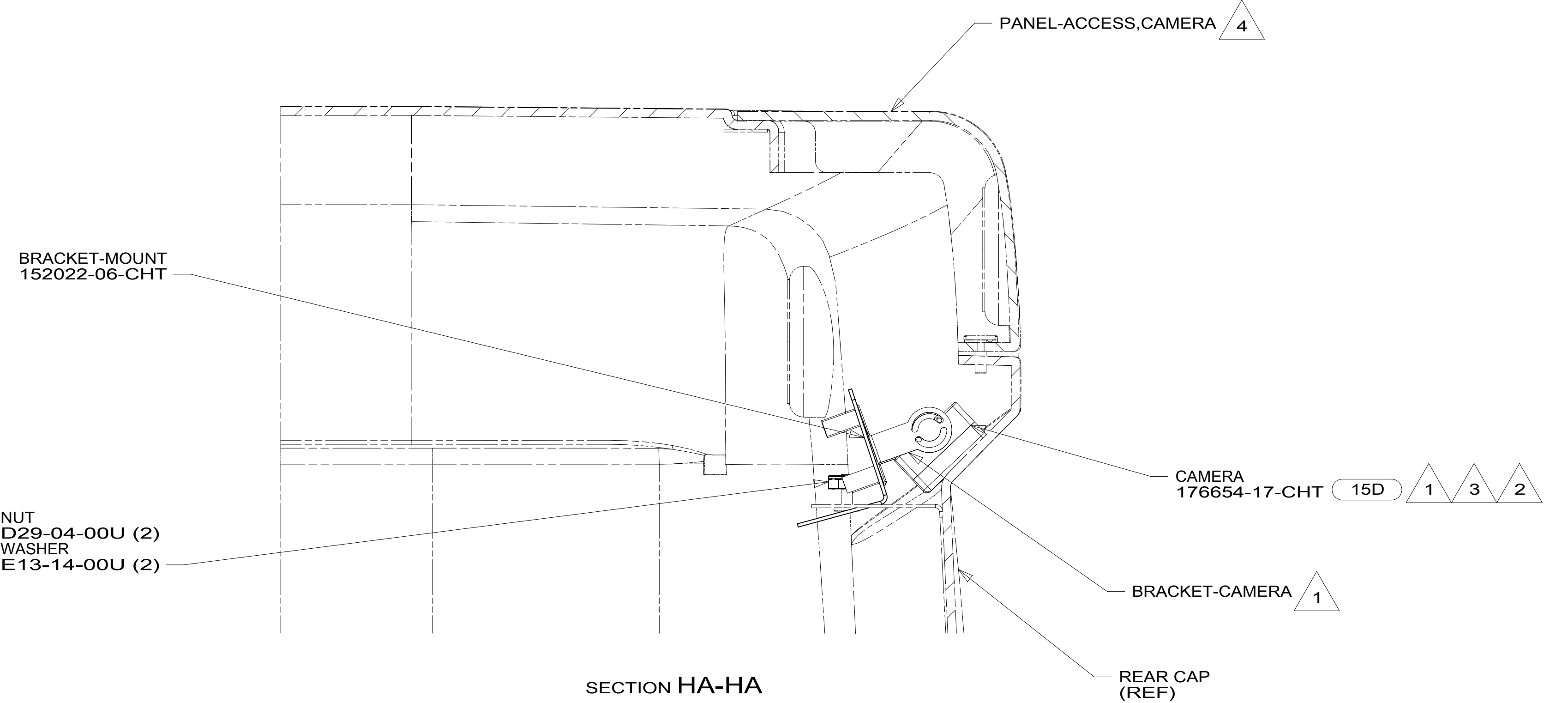
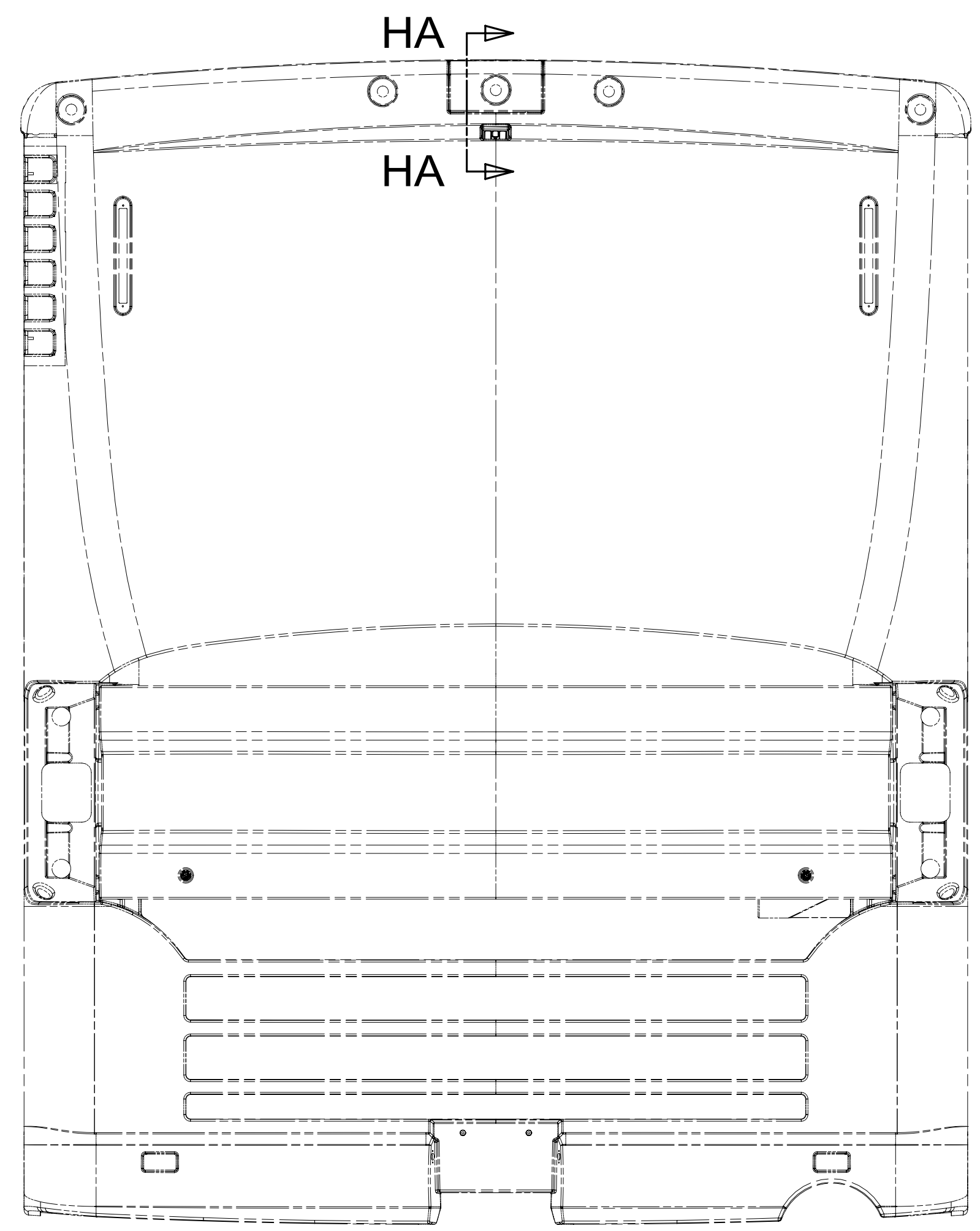
FIRST USED		
<b>15 P-SERIES</b>		
DO NOT SCALE DRAWING		
TITLE: <b>WIRING INSTL-FRONT END</b>		
SHEET 7	PART NO <b>187884</b>	REV

FOR ELECTRICAL TORQUE SPECIFICATIONS SEE DWG NO. 128783-01-000

FOR ELECTRICAL CALLOUTS SEE DWG NO. 121339-01-000

\*187884 \*A





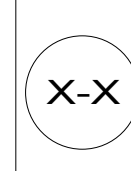
- NOTES:
- 4 SEE PANEL-REAR CAP FOR LOCATION.
  - 3 ALIGN CAMERA IN CENTER OF OPENING AND ADJUST CAMERA VIEWING SO BACKWALL IS JUST VISIBLE IN MONITOR.
  - 2 APPLY TAPE 180131-01-CHT TO SEAL CAMERA CONNECTOR, THEN COVER WITH TAPE 8363-01-000 WITH 15D
  - 1 PARTS SUPPLIED WITH REAR CAMERA

- 15D INFOTAINMENT CENTER/GPS
- 265 CODES/STANDARDS-CSA/CMVSS
- 1B1 CODES/STANDARDS USA

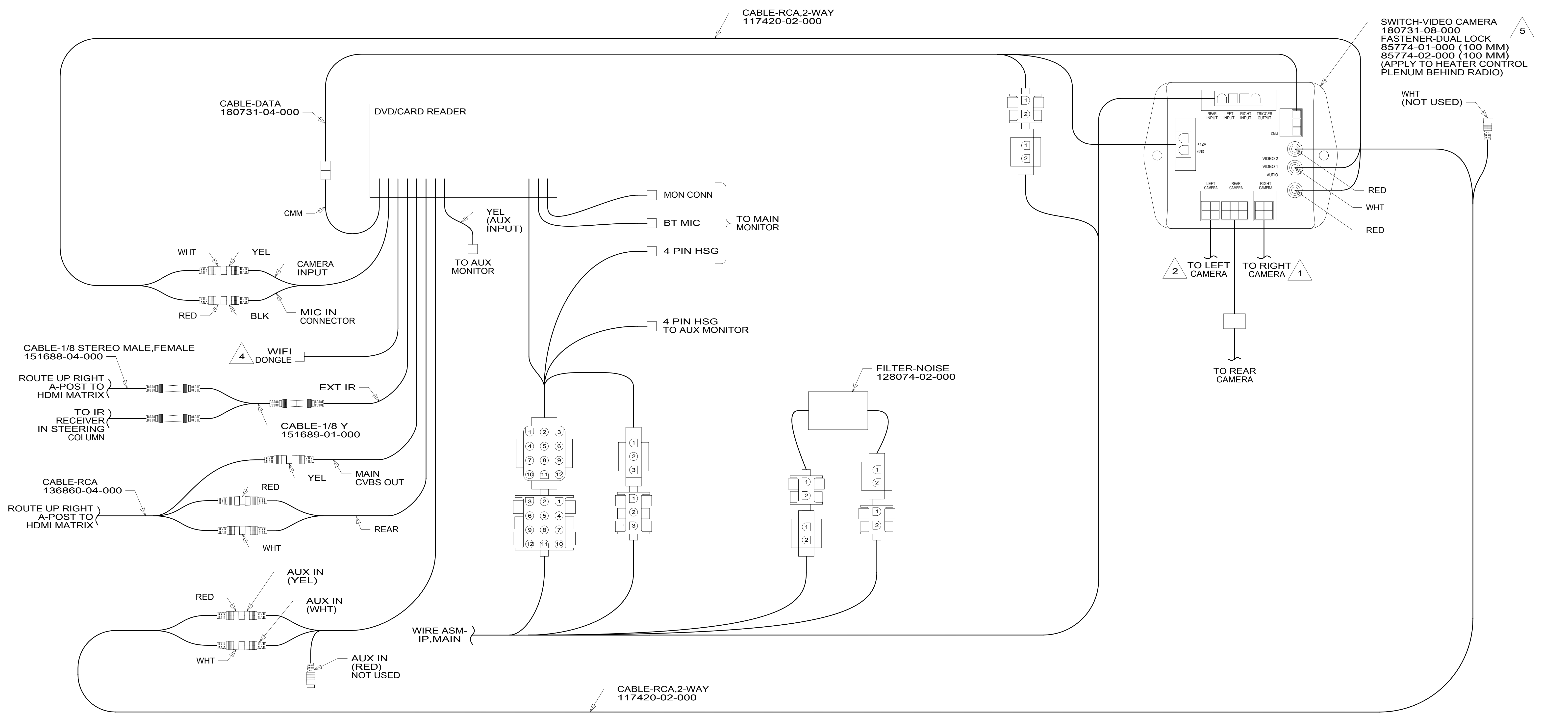
FIRST USED	
<b>15 P-SERIES</b>	
DO NOT SCALE DRAWING	
TITLE: <b>WIRING INSTL-FRONT END</b>	
SHEET 8	PART NO <b>187884</b> REV

FOR ELECTRICAL TORQUE SPECIFICATIONS SEE DWG NO. 128783-01-000

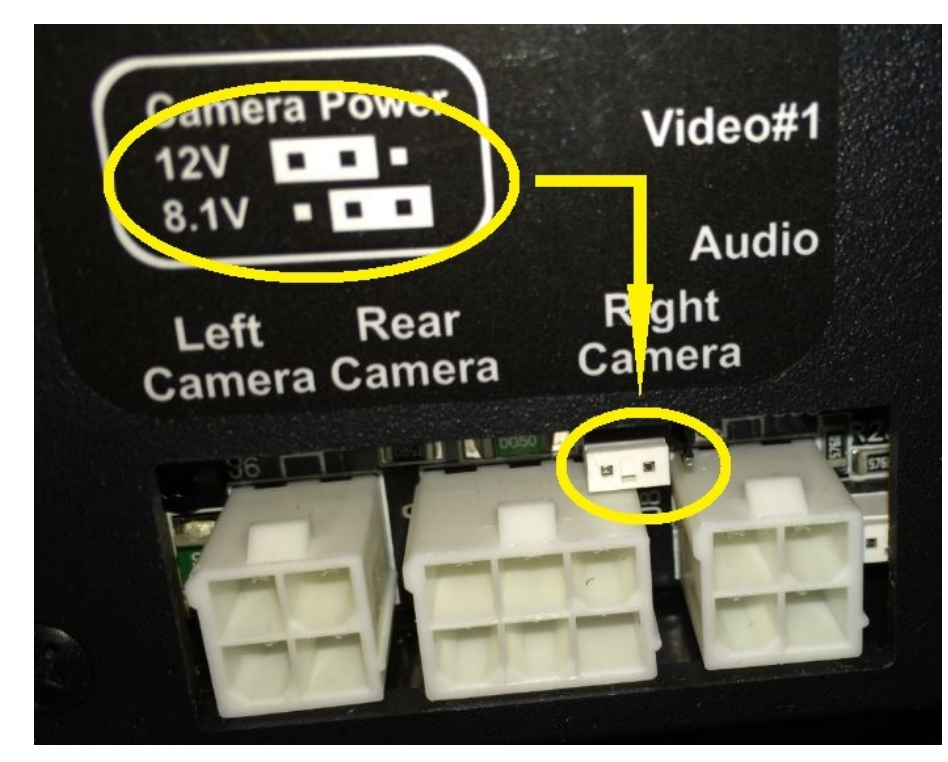
FOR ELECTRICAL CALLOUTS SEE DWG NO. 121339-01-000



\*187884 \*A



- NOTES:**
- 5 ENSURE CAMERA POWER JUMPER IS IN 12V POSITION. MOVE TO 12V POSITION IF NECESSARY. SEE DETAIL JB
  - 4 CABLE SUPPLIED WITH RADIO.
  - 3. APPLY TAPE 8363-01-000 AS NECESSARY TO SECURE NON-LOCKING CONNECTIONS.
  - 2 MARK LEFT CABLE WITH YELLOW TAPE 900000-07-000 NEXT TO CONNECTOR.
  - 1 MARK RIGHT CABLE WITH WHITE TAPE 900000-08-000 NEXT TO CONNECTOR.



DETAIL JB

DETAIL JA

- 15D GPS-NAVIGATION SYSTEM
- 265 CODES/STANDARDS-CSA/CMVSS
- 1B1 CODES/STANDARDS USA

1B1 265 15D

FIRST USED

**15 P-SERIES**

DO NOT SCALE DRAWING

TITLE: **WIRING INSTL-FRONT END**

SHEET 9 PART NO **187884** REV

1 06-Aug-2015

FOR ELECTRICAL TORQUE SPECIFICATIONS SEE DWG NO. 128783-01-000

FOR ELECTRICAL CALLOUTS SEE DWG NO. 121339-01-000

\*187884 \*A