



**DANGER**

**Danger of electrical shock, burns or death.** Always remove all power sources before attempting any repair, service or diagnostic work. Power can be present from shore power, generator, inverter or battery. All power sources must be disabled and secured before performing any service.

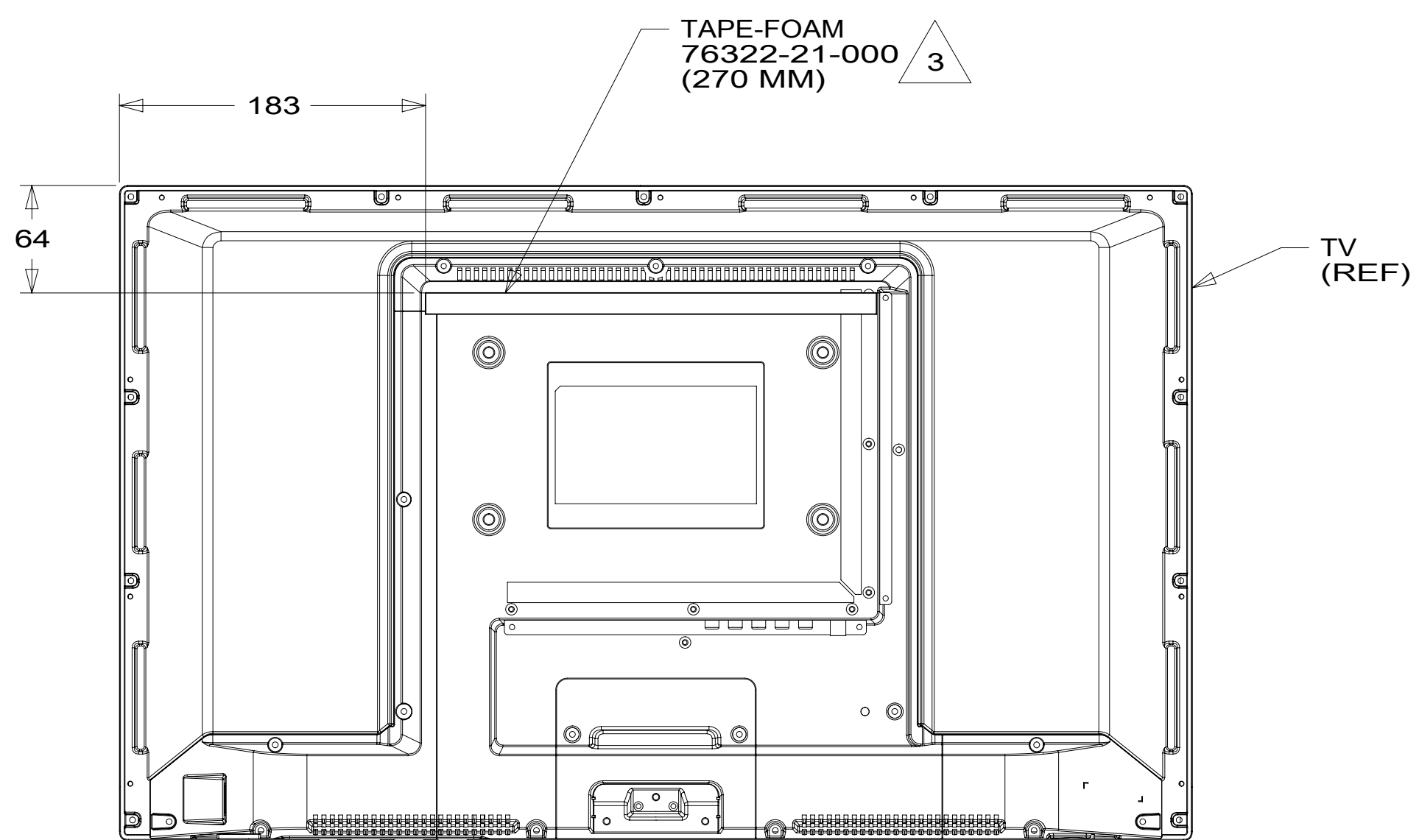
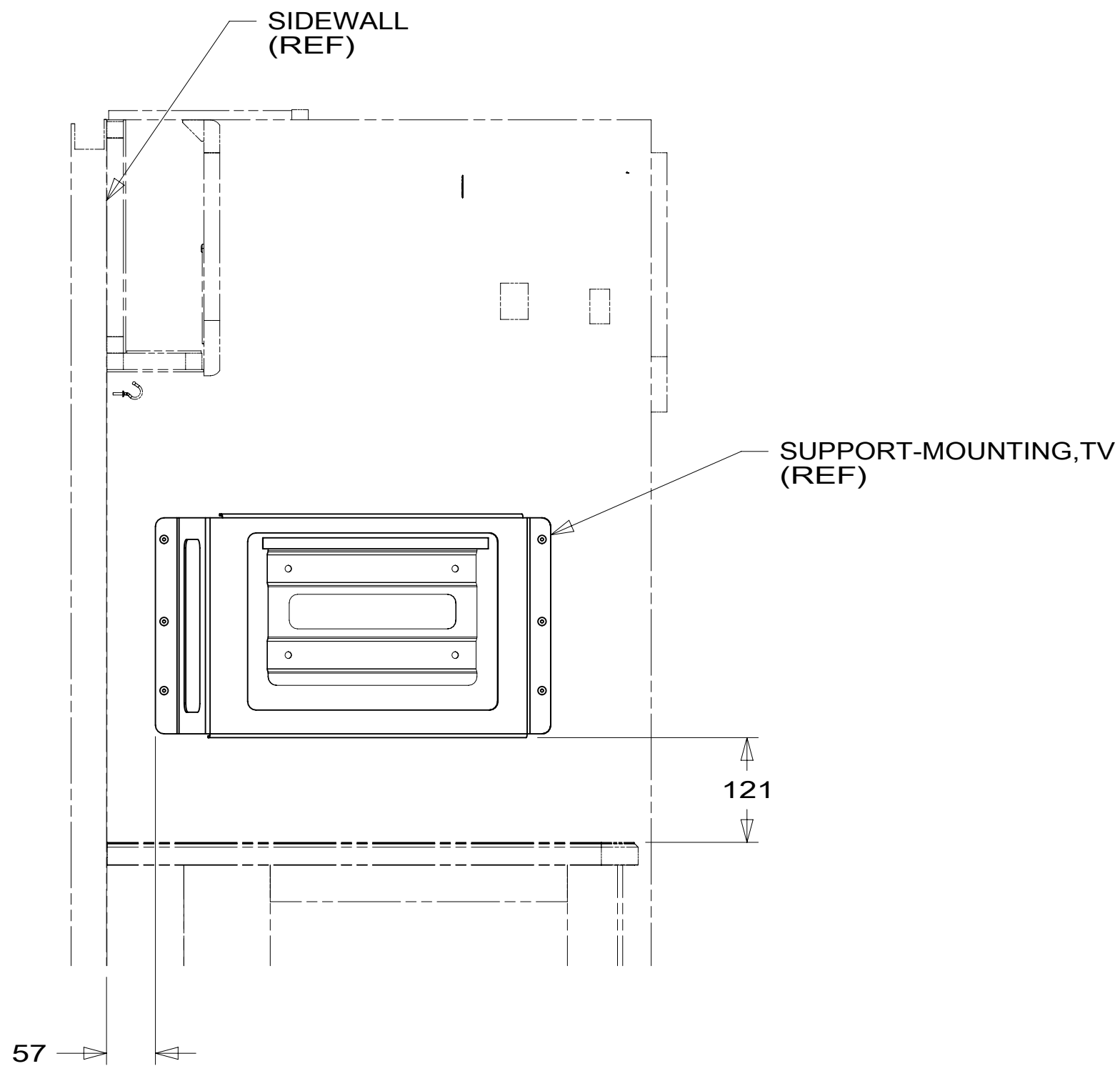
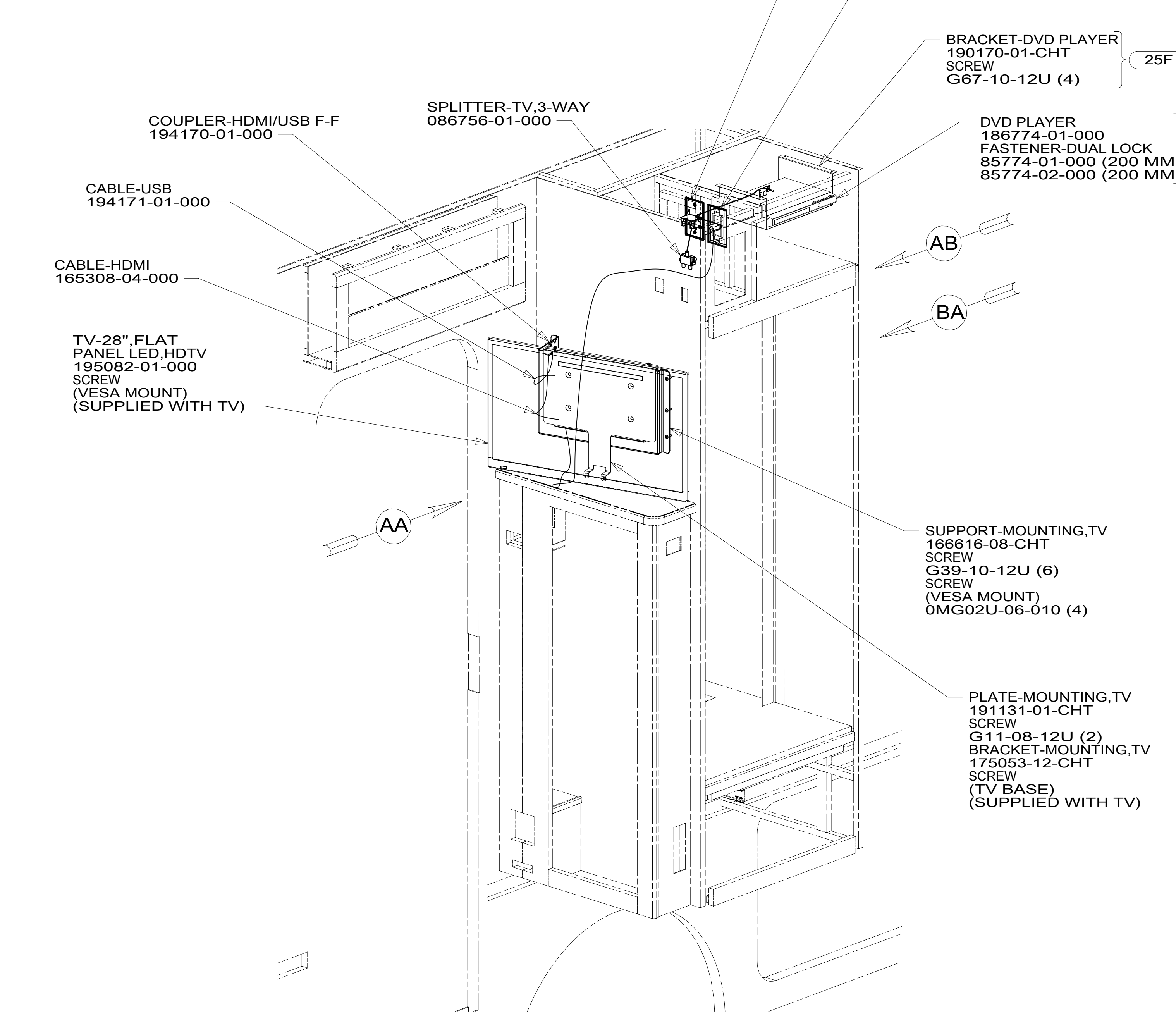


**CAUTION**

If you lack the skills, tools or equipment to perform diagnostic or repair work leave such work to an authorized Winnebago Industries dealer or other qualified shop.

DRAWING NO.	MODEL	SHEETS
187793-01	A26A	1,2
187793-02	A27B	3,4
187793-03	A31C	5,6,7

RELEASE	REV/DATE	DWG NO	187793
REV ZONE	REVISION RECORD	DATE	DFT-ORIG



- 3 CLEAN AND APPLY ADHESIVE PROMOTER 87211-01-000 TO BOTH SURFACES AND BOND WHERE BRACKET CONTACTS TV.
2. WHERE WIRES PASS THROUGH HOLES IN STEEL AND NOT OTHERWISE PROTECTED, USE GROMMET 92908-02-000.
1. AT MINIMUM ALL WIRES TO BE SUPPORTED AND SECURED PER CODE REQUIREMENTS. USE CLAMP 10495 OR 10497 OR WIRE TIE 8343 OR 108046 AND SCREW G67-XX-XXX OR G56-XX-XXX AS APPROPRIATE FOR INSTALLATION.

FOR ELECTRICAL TORQUE SPECIFICATIONS SEE DWG NO. 128783-01-000

FOR ELECTRICAL CALLOUTS SEE DWG NO. 121339-01-000

- 25F DIGITAL VIDEO DISC PLAYER
- 265 CODES/STANDARDS-CSA/CMVSS
- 1B1 CODES/STANDARDS USA

1B1 265

**WINNEBAGO**

COPYRIGHT 2014 WINNEBAGO INDUSTRIES, INC.

DFT-ORIG	ORIG. DATE
CHKR	ALL DIMENSIONS ARE IN MILLIMETERS
P.E.	
M.E.	FIRST USED
DSNR	<b>15 A-SERIES</b>

UNSPECIFIED TOLERANCES ARE:

WHOLE DIM (X)	: 3
ONE-PLACE (X.X)	: 1.5
TWO-PLACE (X.XX)	: 0.50
ANGLE	: 1°

THIRD ANGLE PROJECTION

DO NOT SCALE DRAWING REFER TO ES0018 FOR FASTENER TIGHTENING GUIDELINES

TITLE: **WIRING INSTL-TV/DVD**

SHEET 1 OF 7 PART NO **187793** REV

REF: 1 02-Nov-2015

\*187793\*

8

7

6

5

4

3

2

1

D

D

C

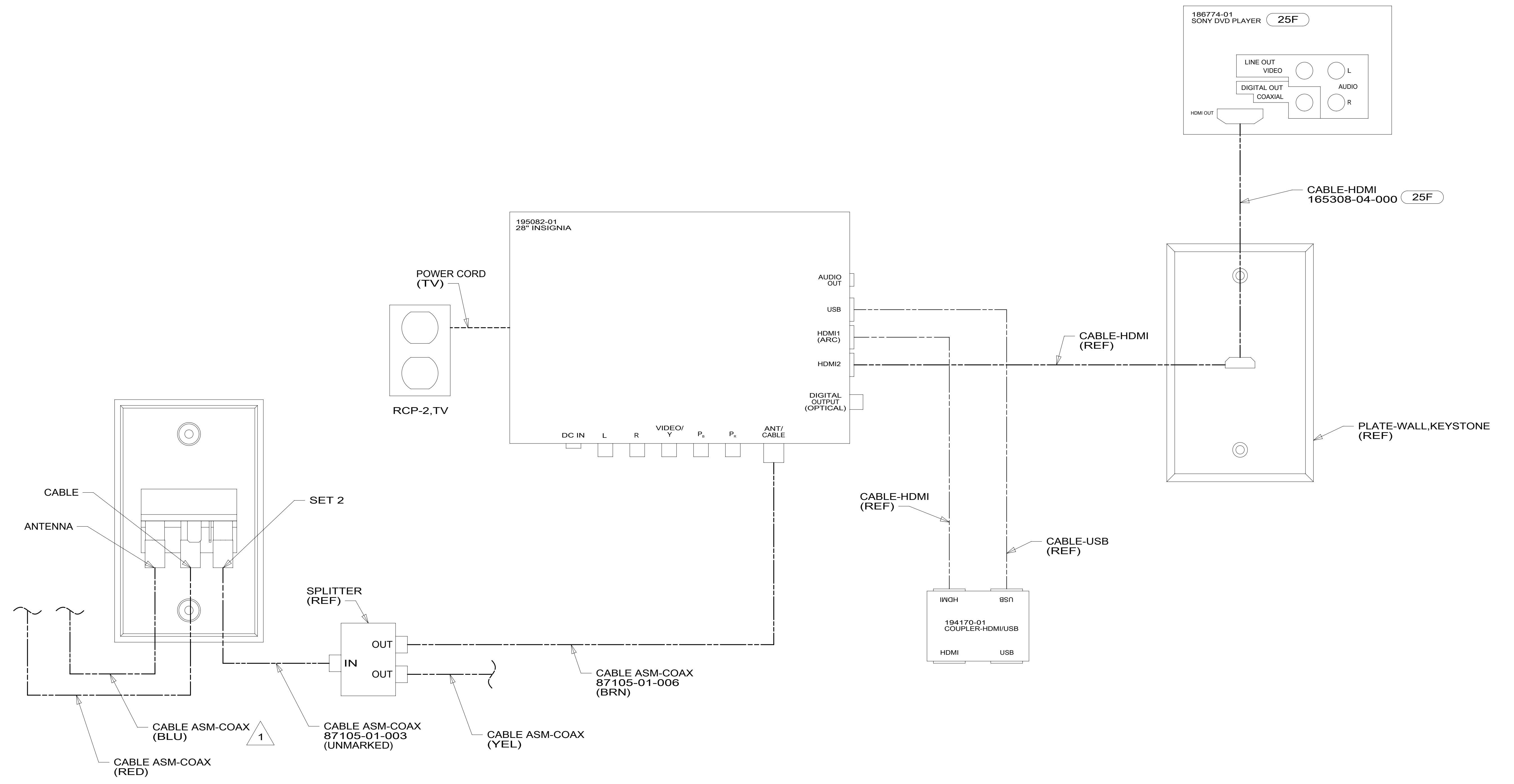
C

B

B

A

A



1 CABLE ROUTED IN ROOF.  
NOTES:

DETAIL BA

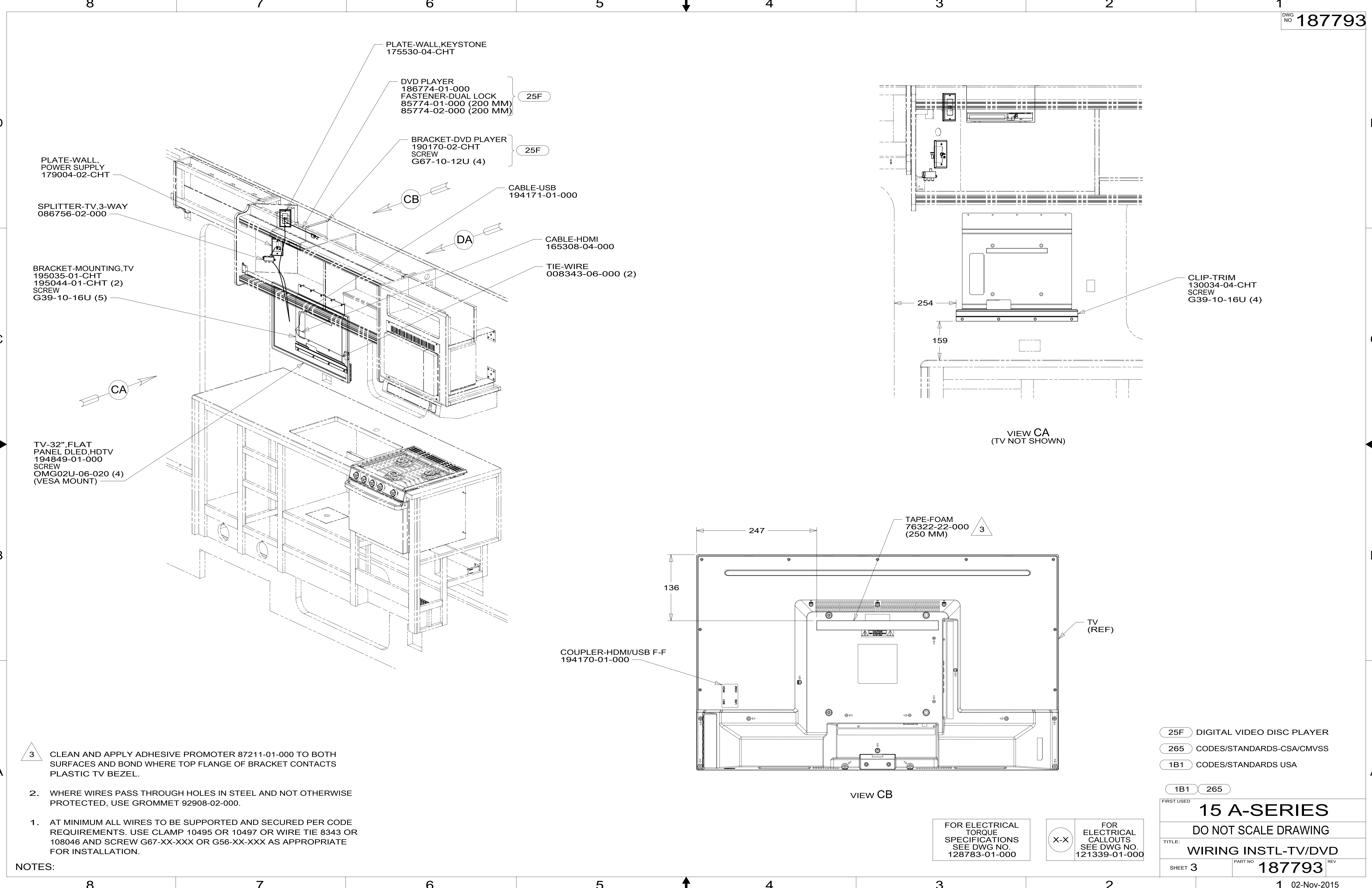
FOR ELECTRICAL TORQUE SPECIFICATIONS SEE DWG NO. 128783-01-000

FOR ELECTRICAL CALLOUTS SEE DWG NO. 121339-01-000

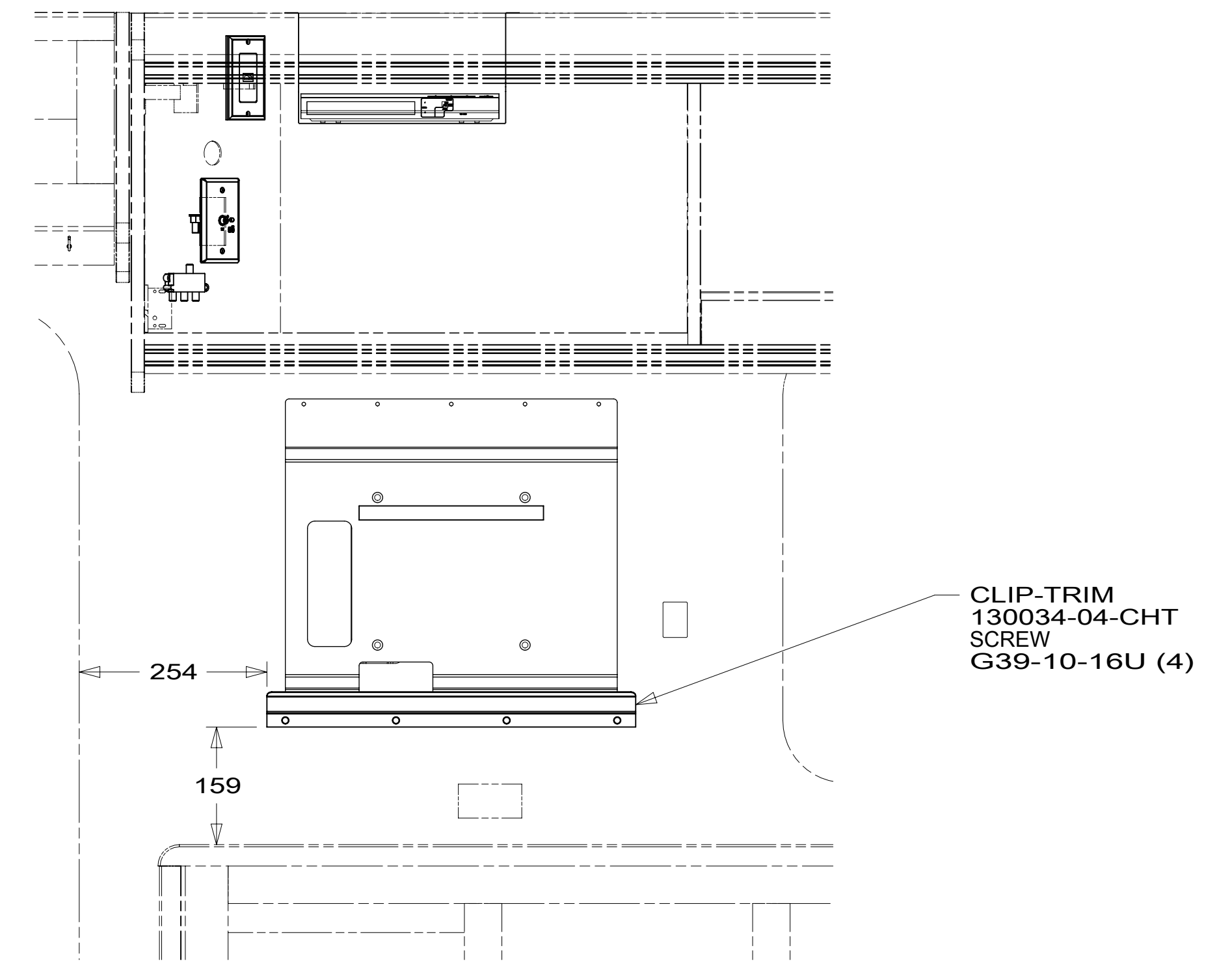
- 25F DIGITAL VIDEO DISC PLAYER
- 265 CODES/STANDARDS-CSA/CMVSS
- 1B1 CODES/STANDARDS USA

1B1	265
FIRST USED	
<b>15 A-SERIES</b>	
DO NOT SCALE DRAWING	
TITLE: <b>WIRING INSTL-TV/DVD</b>	
SHEET 2	PART NO <b>187793</b> REV
1 02-Nov-2015	

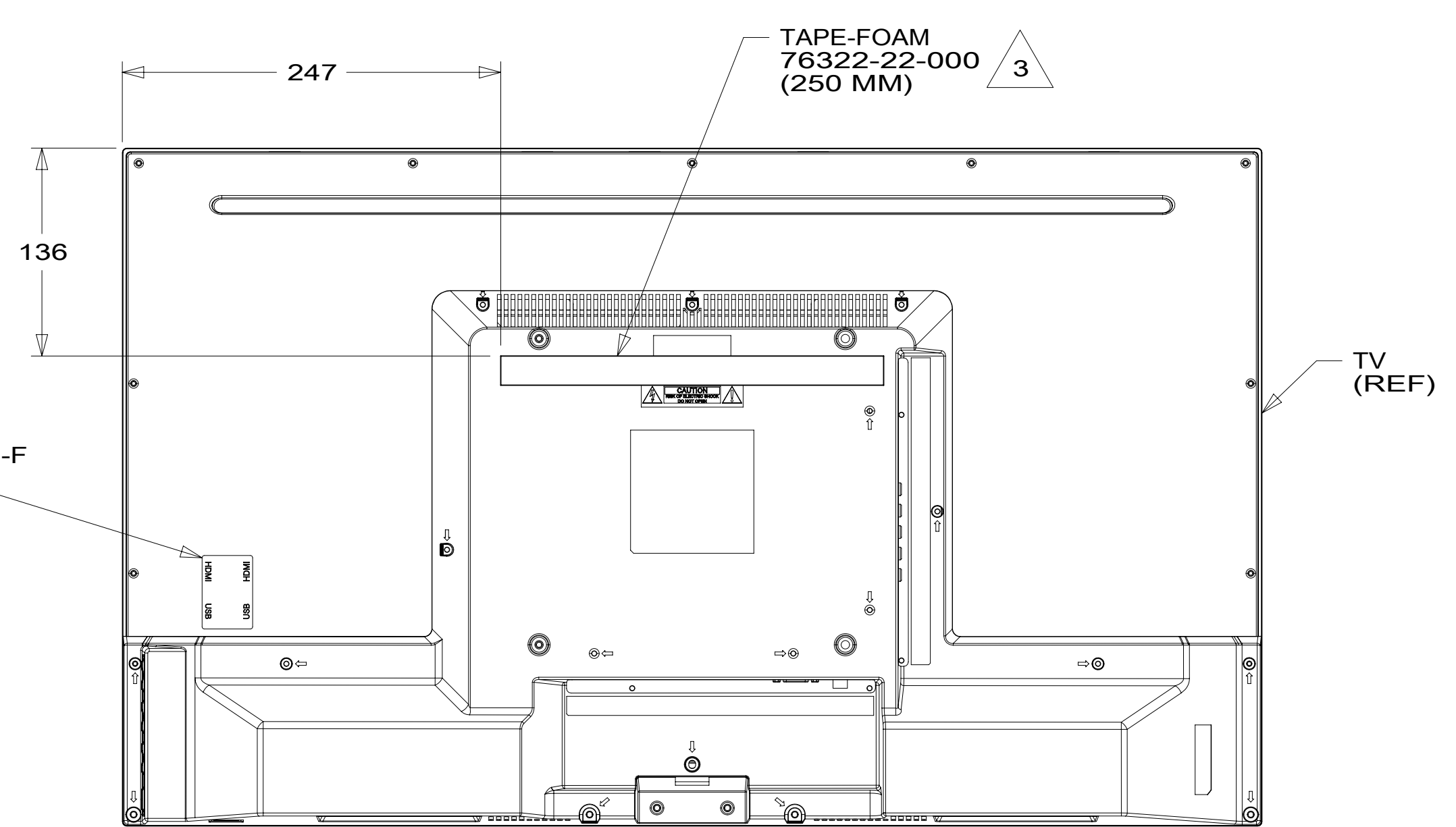
\*187793\*



- PLATE-WALL, KEYSTONE  
175530-04-CHT
- DVD PLAYER  
186774-01-000  
FASTENER-DUAL LOCK  
85774-01-000 (200 MM)  
85774-02-000 (200 MM)
- BRACKET-DVD PLAYER  
190170-02-CHT  
SCREW  
G67-10-12U (4)
- PLATE-WALL, POWER SUPPLY  
179004-02-CHT
- SPLITTER-TV, 3-WAY  
086756-02-000
- BRACKET-MOUNTING, TV  
195035-01-CHT  
195044-01-CHT (2)  
SCREW  
G39-10-16U (5)
- CABLE-USB  
194171-01-000
- CABLE-HDMI  
165308-04-000
- TIE-WIRE  
008343-06-000 (2)
- TV-32" FLAT  
PANEL DLED, HDTV  
194849-01-000  
SCREW  
OMG02U-06-020 (4)  
(VESA MOUNT)



VIEW CA  
(TV NOT SHOWN)



VIEW CB

- 3 CLEAN AND APPLY ADHESIVE PROMOTER 87211-01-000 TO BOTH SURFACES AND BOND WHERE TOP FLANGE OF BRACKET CONTACTS PLASTIC TV BEZEL.
2. WHERE WIRES PASS THROUGH HOLES IN STEEL AND NOT OTHERWISE PROTECTED, USE GROMMET 92908-02-000.
1. AT MINIMUM ALL WIRES TO BE SUPPORTED AND SECURED PER CODE REQUIREMENTS. USE CLAMP 10495 OR 10497 OR WIRE TIE 8343 OR 108046 AND SCREW G67-XX-XXX OR G56-XX-XXX AS APPROPRIATE FOR INSTALLATION.

NOTES:

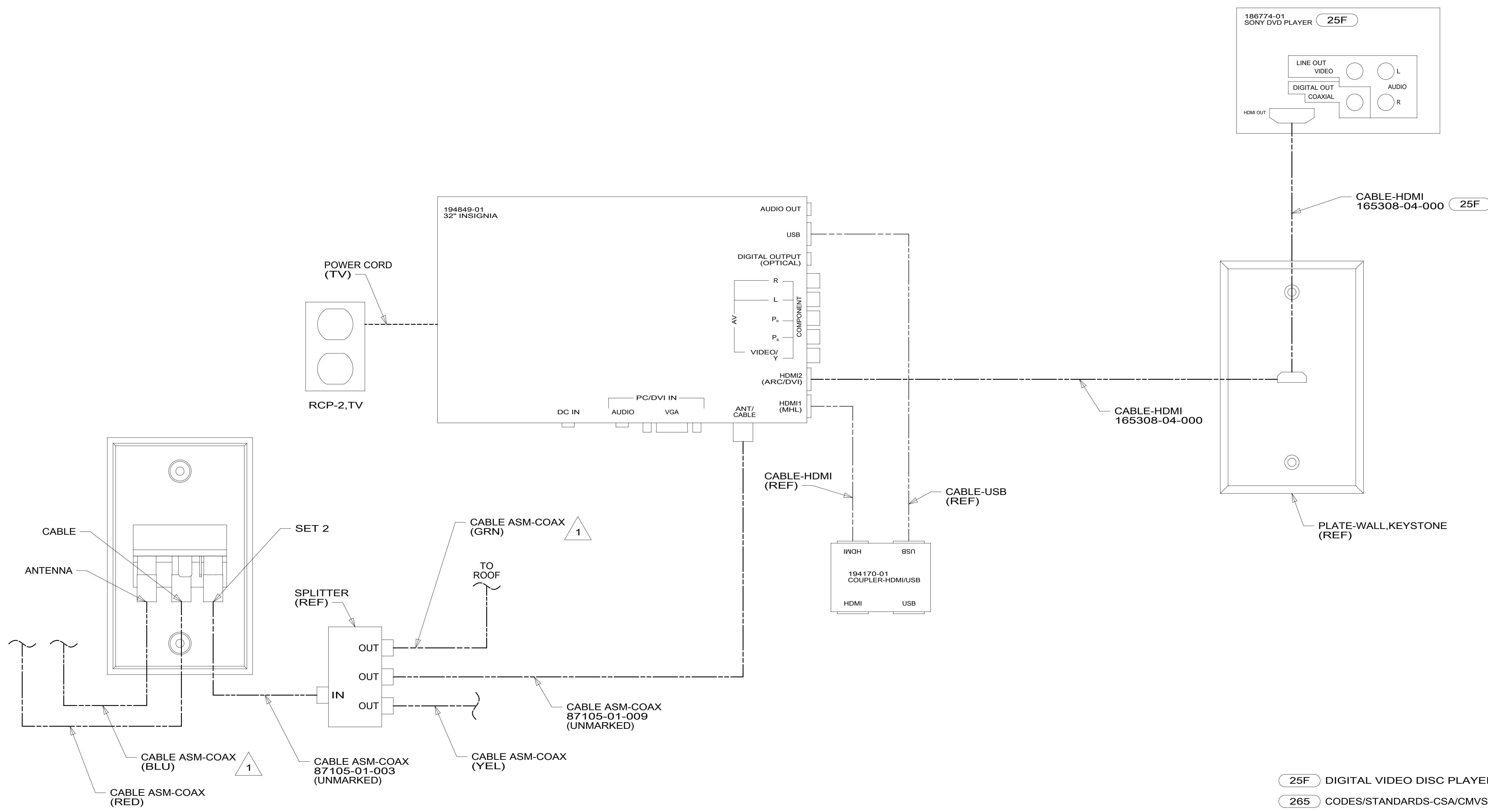
- 25F DIGITAL VIDEO DISC PLAYER
- 265 CODES/STANDARDS-CSA/CMVSS
- 1B1 CODES/STANDARDS USA

1B1	265
FIRST USED	
<b>15 A-SERIES</b>	
DO NOT SCALE DRAWING	
TITLE: <b>WIRING INSTL-TV/DVD</b>	
SHEET 3	PART NO <b>187793</b> REV

FOR ELECTRICAL TORQUE SPECIFICATIONS SEE DWG NO. 128783-01-000

FOR ELECTRICAL CALLOUTS SEE DWG NO. 121339-01-000

\*187793\*



1 CABLE ROUTED IN ROOF.  
NOTES:

DETAIL DA

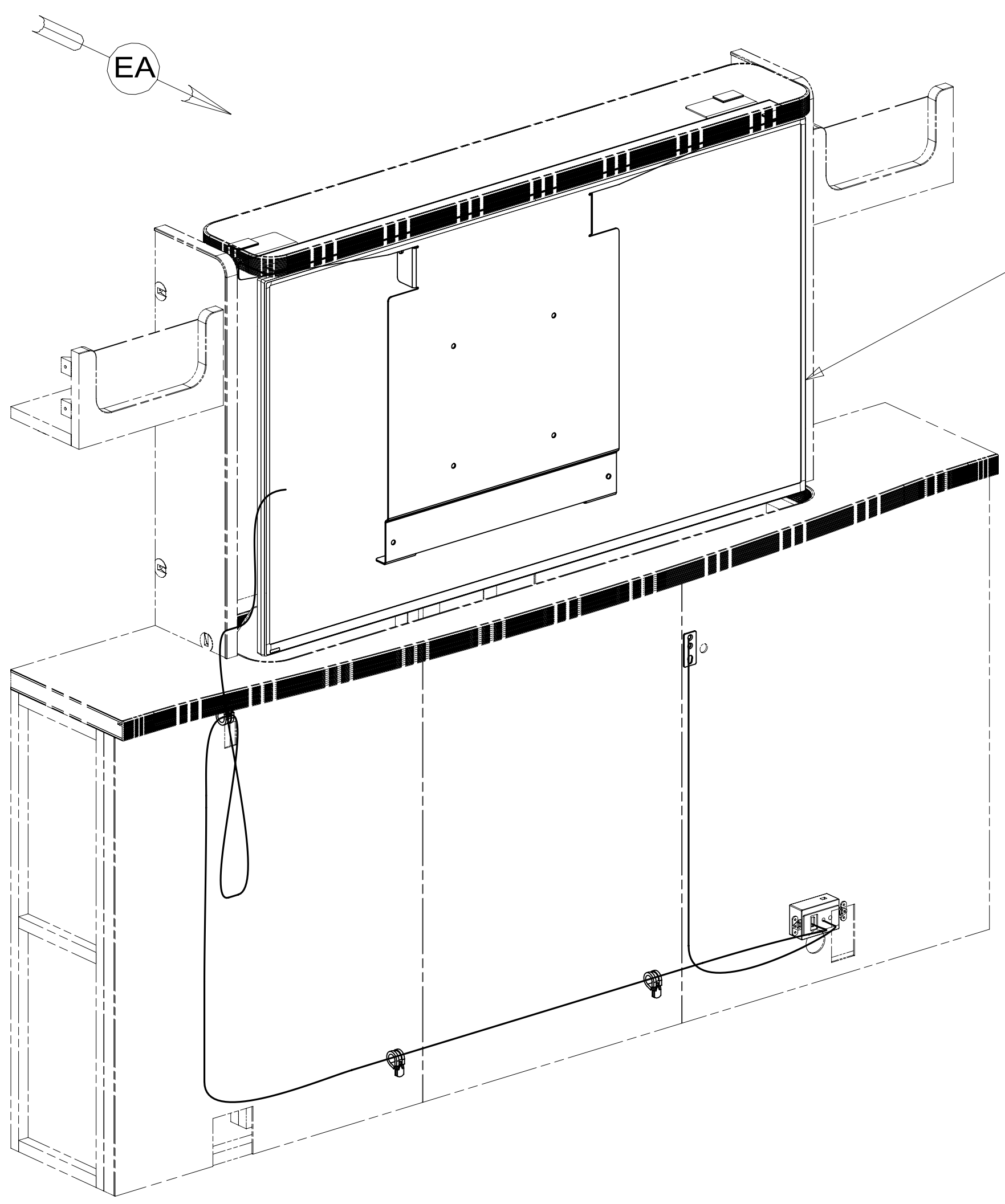
FOR ELECTRICAL TORQUE SPECIFICATIONS SEE DWG NO. 128783-01-000

X-X FOR ELECTRICAL CALLOUTS SEE DWG NO. 121339-01-000

- 25F DIGITAL VIDEO DISC PLAYER
- 265 CODES/STANDARDS-CSA/CMVSS
- 1B1 CODES/STANDARDS USA

FIRST USED	
<b>15 A-SERIES</b>	
<b>DO NOT SCALE DRAWING</b>	
TITLE: <b>WIRING INSTL-TV/DVD</b>	
SHEET 4	PART NO <b>187793</b> REV
1 02-Nov-2015	

\*187793\*



TV-48" FLAT  
PANEL DLED.HDTV  
194365-01-000

CONVERTER-HDMI/CAT6 W/IR  
(IR RECEIVER)  
190382-01-000  
TAPE-FOAM, DBL COATED  
76322-21-000 (50 MM)  
PLATE-RECEIVER, IR  
177834-02-CHT  
SCREW  
G13-08-10U (2)

CONVERTER-HDMI/CAT6 W/IR  
(RECEIVER) (REF)  
FASTNER-DUAL LOCK  
85774-01-000 (50 MM) (2)  
85774-02-000 (50 MM) (2)

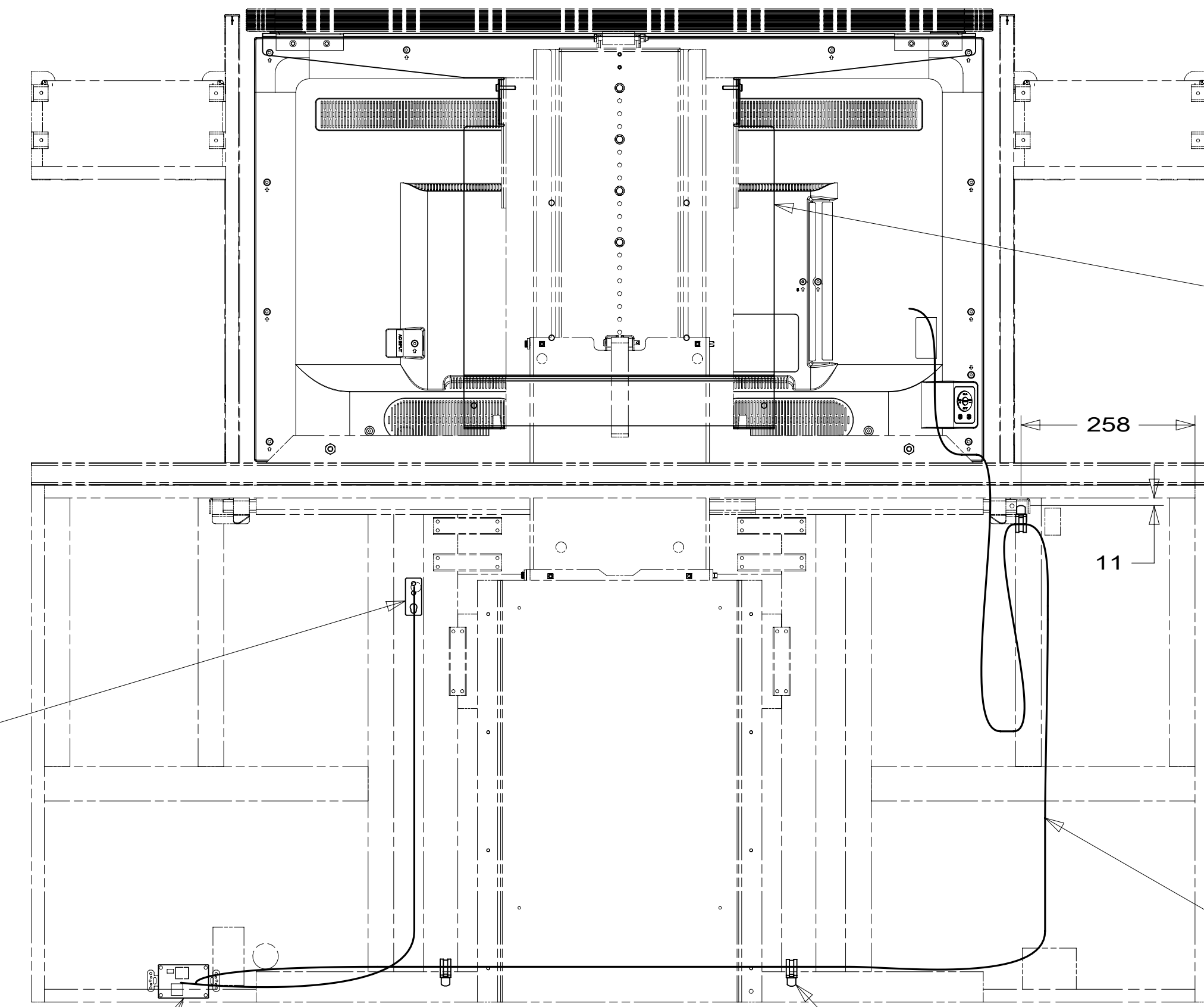
BRACKET ASM-TV  
302645-01-CHT  
SCREW-VESA MOUNT  
(SUPPLIED WITH TV)

CABLE-HDMI  
CABLE ASM-COAX  
(REF)

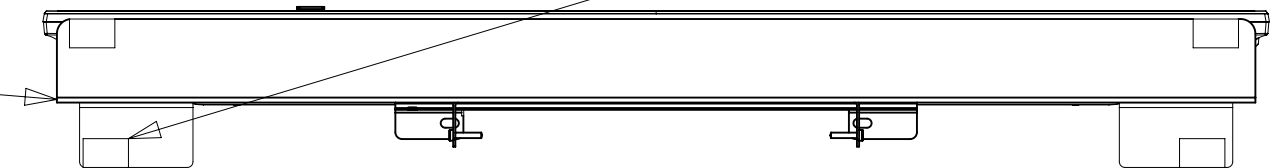
CLAMP  
10497-02-000 (3)  
SCREW  
G11-08-16U (3)

BRACKET ASM-TV  
(REF)

TAPE-LOOP, 1.0 WIDE  
029094-07-000  
(40 MM)  
TAPE-HOOK, 1.0 WIDE  
029096-04-000  
(40 MM)  
(USED TO ATTACH COUNTERTOP  
TO BRACKET ASM-TV)



VIEW EA



VIEW EB

FOR ELECTRICAL  
TORQUE  
SPECIFICATIONS  
SEE DWG NO.  
128783-01-000

FOR  
ELECTRICAL  
CALLOUTS  
SEE DWG NO.  
121339-01-000

265 CODES/STANDARDS-CSA/CMVSS  
1B1 CODES/STANDARDS USA

1B1 265

FIRST USED  
**15 A-SERIES**

DO NOT SCALE DRAWING

TITLE:  
**WIRING INSTL-TV/DVD**

SHEET 5 PART NO. **187793** REV

TV-32" FLAT  
PANEL DLED  
194849-01-000  
SCREW  
OMG02U-06-020 (4)  
WASHER  
00E13-23-00U (8)  
(VESA MOUNT)

CABLE-USB  
300593-01-000

CABLE-HDMI  
165308-03-000

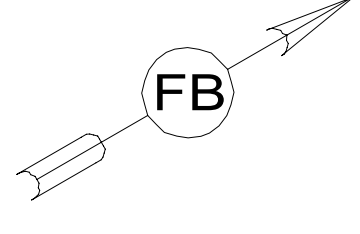


PLATE-MOUNTING,TV  
195035-01-CHT  
195044-01-CHT (2)  
SCREW  
G11-10-16U (9)  
CLIP-TRIM  
130034-04-CHT

BRACKET-COUPLER,  
HDMI/USB  
194568-01-CHT  
SCREW  
G11-08-08U (2)

COUPLER-HDMI/USB F-F  
194170-01-000

DVD PLAYER  
186774-01-000  
FASTENER-DUAL LOCK  
85774-01-000 (200 MM)  
85774-02-000 (200 MM)

25F

PLATE-WALL,KEYSTONE  
175530-04-CHT

CONVERTER-HDMI/CAT6 W/IR  
(IR TRANSMITTER) (REF)  
TAPE-FOAM,DBL COATED  
76322-21-000 (50 MM)

PLATE-WALL,  
POWER SUPPLY  
179004-02-CHT

SPLITTER-TV,3-WAY  
086756-02-000

SPLITTER-HDMI,1X2  
178632-01-000

CONVERTER-HDMI/CAT6 W/IR  
(TRANSMITTER) (REF)  
FASTENER-DUAL LOCK  
85774-01-000 (50 MM) (2)  
85774-02-000 (50 MM) (2)

CLIP-TRIM  
(REF)

118

20

VIEW FB

1 MOUNT BRACKET SO THAT COUPLER WILL BE AS FAR INBOARD AS POSSIBLE.

NOTES:

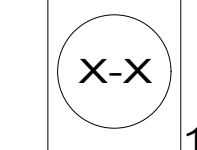
- 25F DIGITAL VIDEO DISC PLAYER
- 265 CODES/STANDARDS-CSA/CMVSS
- 1B1 CODES/STANDARDS USA

1B1 265

FIRST USED	
<b>15 A-SERIES</b>	
DO NOT SCALE DRAWING	
TITLE: <b>WIRING INSTL-TV/DVD</b>	
SHEET 6	PART NO <b>187793</b> REV

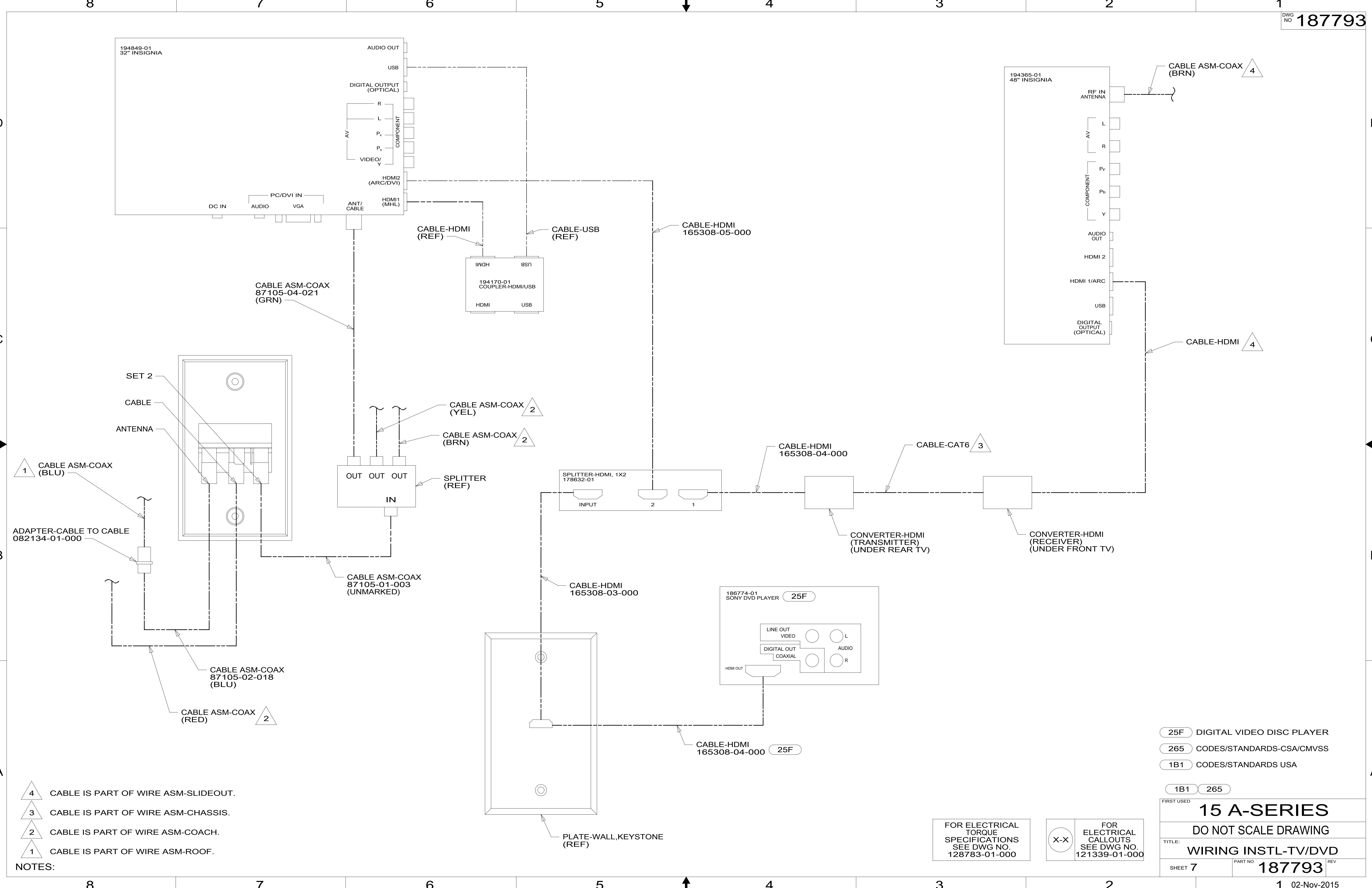
FOR ELECTRICAL  
TORQUE  
SPECIFICATIONS  
SEE DWG NO.  
128783-01-000

FOR  
ELECTRICAL  
CALLOUTS  
SEE DWG NO.  
121339-01-000



\*187793\*





- NOTES:
- 4 CABLE IS PART OF WIRE ASM-SLIDEOUT.
  - 3 CABLE IS PART OF WIRE ASM-CHASSIS.
  - 2 CABLE IS PART OF WIRE ASM-COACH.
  - 1 CABLE IS PART OF WIRE ASM-ROOF.

- 25F DIGITAL VIDEO DISC PLAYER
- 265 CODES/STANDARDS-CSA/CMVSS
- 1B1 CODES/STANDARDS USA

FIRST USED

**15 A-SERIES**

DO NOT SCALE DRAWING

TITLE: **WIRING INSTL-TV/DVD**

SHEET 7 PART NO **187793** REV

1 02-Nov-2015

FOR ELECTRICAL TORQUE SPECIFICATIONS SEE DWG NO. 128783-01-000

FOR ELECTRICAL CALLOUTS SEE DWG NO. 121339-01-000

\*187793\*