



DANGER

Danger of electrical shock, burns or death. Always remove all power sources before attempting any repair, service or diagnostic work. Power can be present from shore power, generator, inverter or battery. All power sources must be disabled and secured before performing any service.

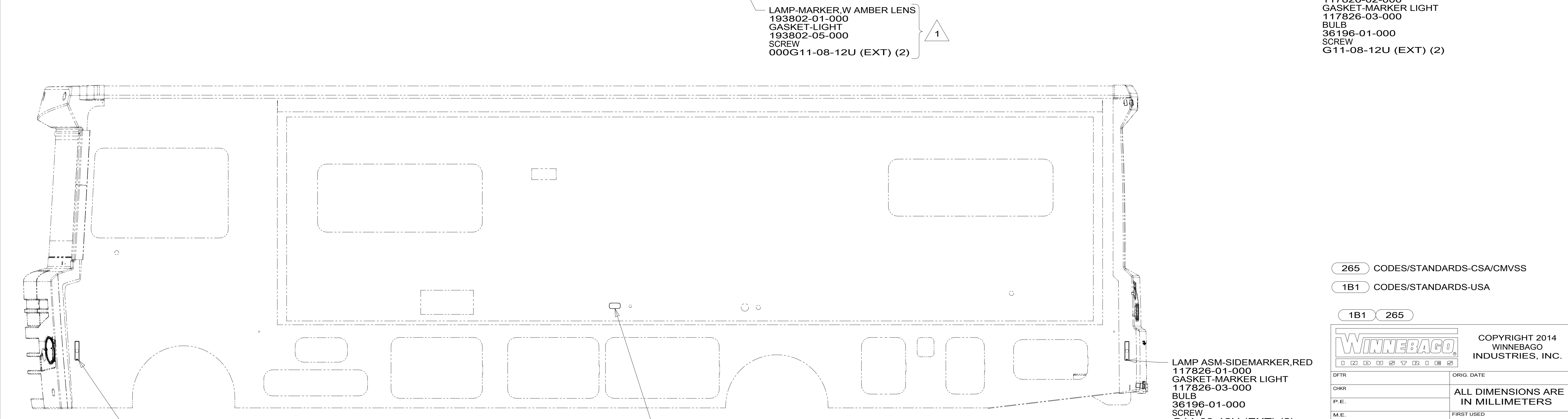
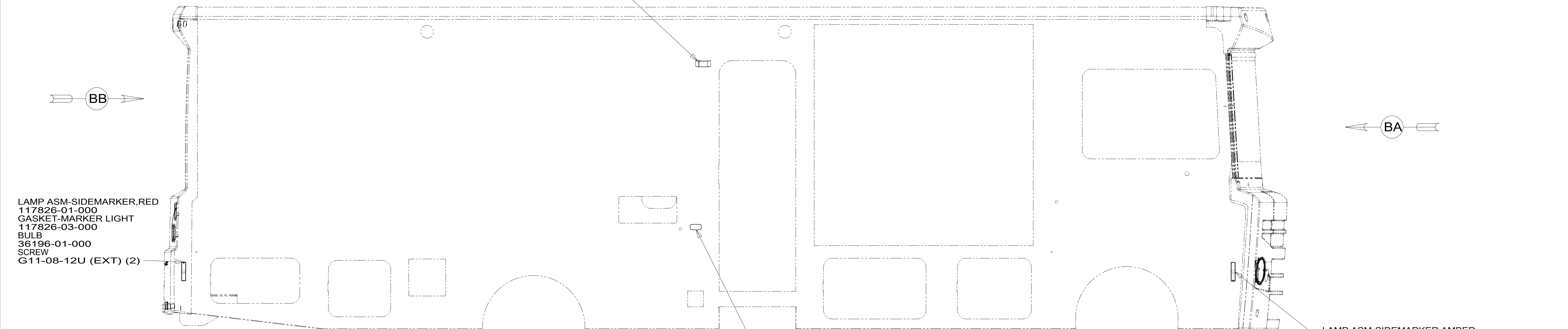


CAUTION

If you lack the skills, tools or equipment to perform diagnostic or repair work leave such work to an authorized Winnebago Industries dealer or other qualified shop.

DRAWING NO.	UNITS
187792-01	A26A,A27B
187792-02	A31C

RELEASE	REV/DATE	DWG NO	187792
REV ZONE	REVISION RECORD	DATE	DTR-ORIG



LAMP ASM-SIDEMARKER,AMBER
 117826-02-000
 GASKET-MARKER LIGHT
 117826-03-000
 BULB
 36196-01-000
 SCREW
 G11-08-12U (EXT) (2)

LAMP-MARKER.W AMBER LENS
 193802-01-000
 GASKET-LIGHT
 193802-05-000
 SCREW
 000G11-08-12U (EXT) (2)

LAMP ASM-SIDEMARKER,RED
 117826-01-000
 GASKET-MARKER LIGHT
 117826-03-000
 BULB
 36196-01-000
 SCREW
 G11-08-12U (EXT) (2)

LAMP ASM-SIDEMARKER,AMBER
 117826-02-000
 GASKET-MARKER LIGHT
 117826-03-000
 BULB
 36196-01-000
 SCREW
 G11-08-12U (EXT) (2)

NOTES:
 1 NOT USED ON A26A OR A27B.

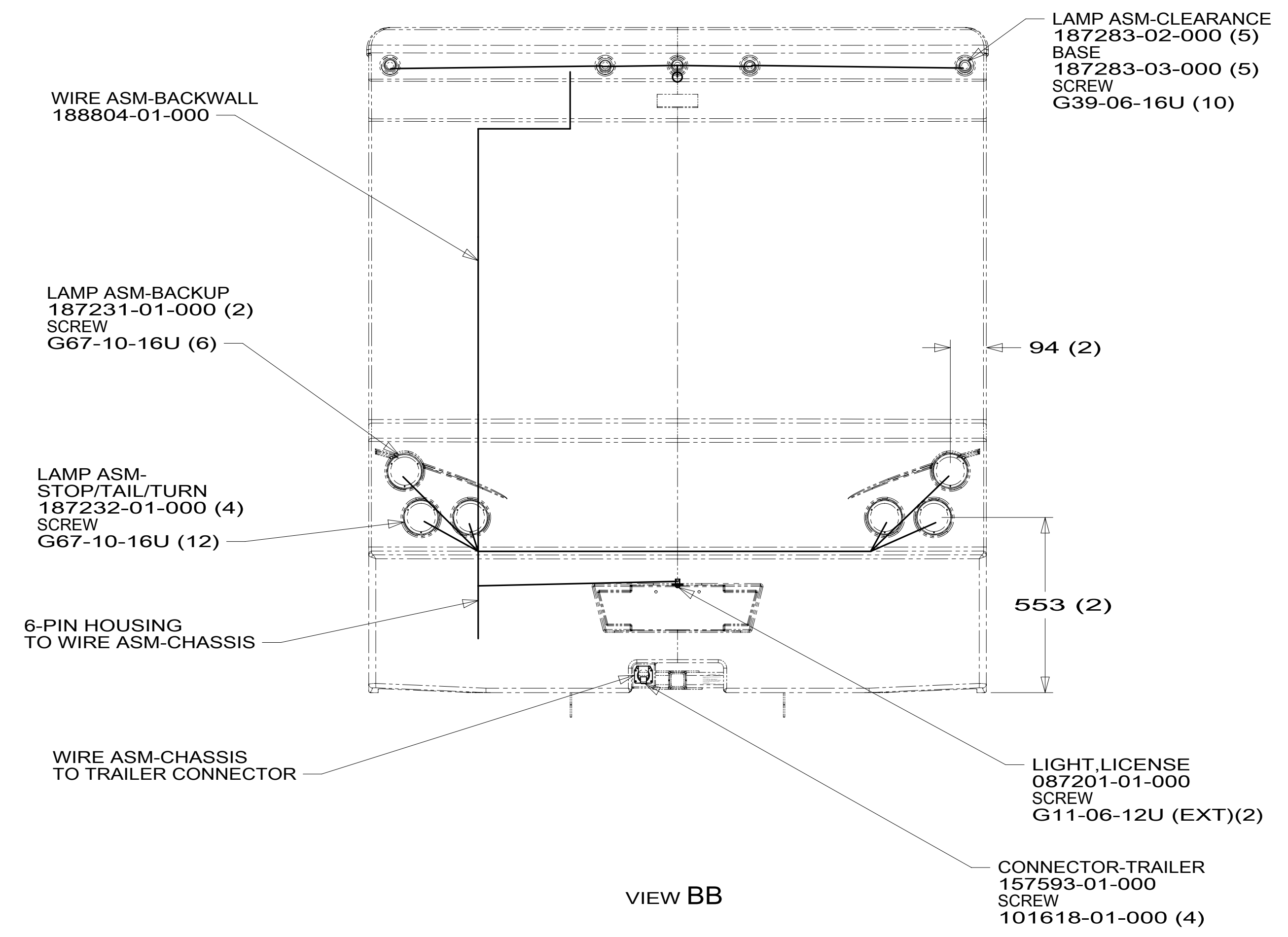
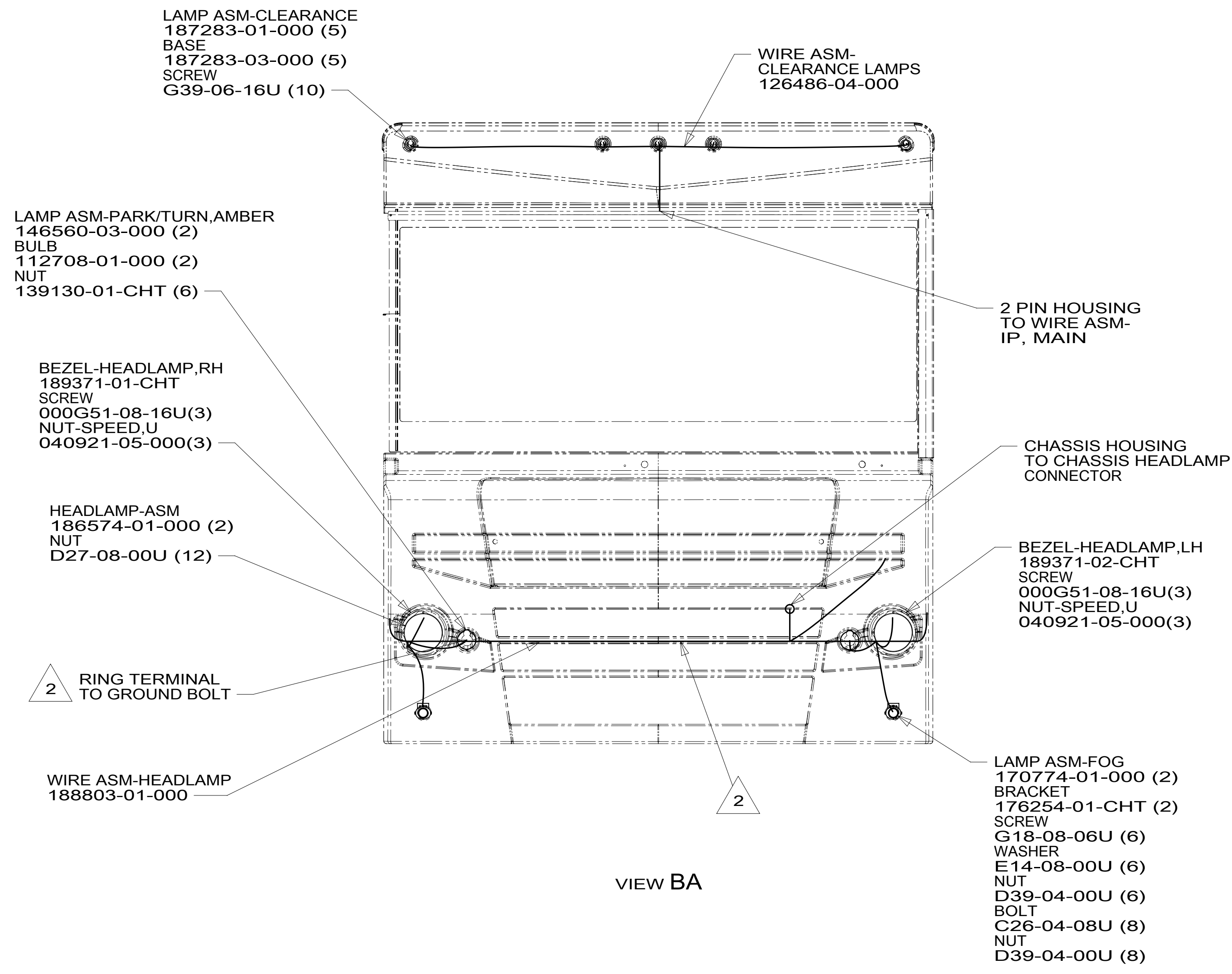
FOR ELECTRICAL TORQUE SPECIFICATIONS SEE DWG NO. 128783-01-000

FOR ELECTRICAL CALLOUTS SEE DWG NO. 121339-01-000

- 265 CODES/STANDARDS-CSA/CMVSS
- 1B1 CODES/STANDARDS-USA
- 1B1 265

WINNEBAGO		COPYRIGHT 2014 WINNEBAGO INDUSTRIES, INC.	
DTR	ORIG. DATE	ALL DIMENSIONS ARE IN MILLIMETERS	
CHKR		FIRST USED	
P.E.		15 A-SERIES	
M.E.		MATERIAL:	
DSNR		UNSPECIFIED TOLERANCES ARE:	
		WHOLE DIM (X)	: 3
		ONE-PLACE (X.X)	: 1.5
		TWO-PLACE (X.XX)	: 0.50
		ANGLE	: 1°
THIRD ANGLE PROJECTION		DO NOT SCALE DRAWING REFER TO ES0018 FOR FASTENER TIGHTENING GUIDELINES	
TITLE: WIRING INSTL-EXTERIOR LAMPS			
SHEET 1 OF 2	PART NO	187792	REV
REF:	1	09-Jul-2015	

187792



2 CLEAN PAINT OFF METAL (BOLT) BEFORE CONNECTING GROUND TO INSURE CONTACT. ALSO MOUNT CHASSIS SUPPLIED HORN TO GROUND BOLT.

1. GATHER ALL EXCESS WIRE AFTER MAKING ALL CONNECTIONS AND BUNDLE AND SECURE WITH TIE-WIRE 8343-01-000 OR 93147-01-000.

NOTES:

FOR ELECTRICAL TORQUE SPECIFICATIONS SEE DWG NO. 128783-01-000

FOR ELECTRICAL CALLOUTS SEE DWG NO. 121339-01-000

265 CODES/STANDARDS-CSA/CMVSS

1B1 CODES/STANDARDS USA

1B1 265

FIRST USED **15 A-SERIES**

DO NOT SCALE DRAWING

TITLE: **WIRING INSTL-EXTERIOR LAMPS**

SHEET 2 PART NO **187792** REV