



**DANGER**

**Danger of electrical shock, burns or death.** Always remove all power sources before attempting any repair, service or diagnostic work. Power can be present from shore power, generator, inverter or battery. All power sources must be disabled and secured before performing any service.



**CAUTION**

If you lack the skills, tools or equipment to perform diagnostic or repair work leave such work to an authorized Winnebago Industries dealer or other qualified shop.

DRAWING NO.	MODEL	SHEET
187791-01	A26A	1,2,3,4,7
187791-02	A27B	1,2,3,4,7
187791-03	A31C	1,2,4,5,6,7

RELEASE	REV/DATE	DWG NO	187791
REV ZONE	REVISION RECORD	DATE	DFT-ORIG

		A26A	A27B	A31C
RED	1B1	136135-07-070	136135-07-060	136135-07-081
	265	136136-07-070	136136-07-060	136136-07-081
YEL	1B1	136131-05-046	136131-05-013	136131-05-050
	265	136134-05-046	136134-05-013	136134-05-050
BRN	1B1	136131-03-140	136131-03-084	136131-03-026
	265	136134-03-140	136134-03-084	136134-03-026
BLU	1B1	136131-02-012	136131-02-074	136131-02-021
	265	136134-02-012	136134-02-074	136134-02-021
MAIN	1B1	136137-01-013	136137-01-013	176841-01-042
	265	136138-01-013	136138-01-013	176841-01-042
BLK	1B1	136135-06-013	136135-06-060	136131-06-020
	265	136136-06-013	136136-06-060	136134-06-020
GRN	1B1			136135-08-078
	265			136136-08-078
PUR	1B1			136131-04-035
	265			136134-04-035
GROUND ATS				136145-01-020
GROUND MAIN		178545-01-022	178545-01-033	136145-01-030
CASE GROUND CONVERTER		136145-05-022	136145-05-030	
MAIN EXTENSION	1B1	8022-01-000 (4500)	8022-01-000 (6300)	
	265	24743-01-000 (4500)	24743-01-000 (6300)	
MAIN EXT CONDUIT		91234-01-000 (4100)	91234-01-000 (5900)	

- CODES/STANDARDS-CSA/CMVSS
- CODES/STANDARDS USA
- 

**WINNEBAGO** COPYRIGHT 2014 WINNEBAGO INDUSTRIES, INC.

ALL DIMENSIONS ARE IN MILLIMETERS

**15 A-SERIES**

UNSPECIFIED TOLERANCES ARE:  
 WHOLE DIM (X) : 3  
 ONE-PLACE (X.X) : 1.5  
 TWO-PLACE (X.XX) : 0.50  
 ANGLE : 1°

THIRD ANGLE PROJECTION

DO NOT SCALE DRAWING REFER TO ES0018 FOR FASTENER TIGHTENING GUIDELINES

TITLE: **LOAD CENTER/ATS ASM**

SHEET **1** OF **7** PART NO **187791** REV

REF: **1** 08-Oct-2015

SEE DETAIL GB FOR ADDITIONAL INFORMATION.

1. ALL GROUNDS WIRES TO BE COVERED WITH TUBING 8041-02-000.

FOR ELECTRICAL TORQUE SPECIFICATIONS SEE DWG NO. 128783-01-000

FOR ELECTRICAL CALLOUTS SEE DWG NO. 121339-01-000

\*187791\*

		A26A	A27B	A31C
THROW IN WIRE #1	1B1	136131-02-137	136131-03-008	136131-06-038
	265	136134-02-137	136134-03-008	136134-06-038
THROW IN WIRE #2	1B1	136135-06-004	136131-03-007	136131-04-072
	265	136136-06-004	136134-03-007	136134-04-072
THROW IN WIRE #3	1B1		136131-03-042	136131-02-022
	265		136134-03-042	136134-02-022
THROW IN WIRE #4	1B1		136131-03-009	136131-04-021
	265		136134-03-009	136134-04-021
THROW IN WIRE #5	1B1		136131-05-009	136131-02-009
	265		136134-05-009	136134-02-009
THROW IN WIRE #6	1B1			136131-03-012
	265			136134-03-012
THROW IN WIRE #7	1B1			136131-03-005
	265			136134-03-005
SLIDEOUT WIRE #1				136151-02-023
INVERTER CHARGER MAIN	1B1			137136-01-013
	265			136138-01-013
INVERTER CHARGER SUB MAIN	1B1			136137-01-013
	265			136138-01-013
INVERTER CHARGER EXTENSION				189760-01-096

- MARK ONE WHITE WIRE OF ASSEMBLY WITH (1) WRAP OF BLACK TAPE ON EACH END. REFER TO WIRE ASM-INVERTER FOR MORE INFORMATION.
- SEE DETAIL GC FOR ADDITIONAL INFORMATION.
- SEE DETAIL GB FOR ADDITIONAL INFORMATION.
- SEE DETAIL GA FOR CONNECTOR INSTALLATION.

NOTES:  
 1. ALL GROUNDS WIRES TO BE COVERED WITH TUBING 8041-02-000.

CODES/STANDARDS-CSA/CMVSS  
 CODES/STANDARDS USA

FIRST USED

## 15 A-SERIES

DO NOT SCALE DRAWING

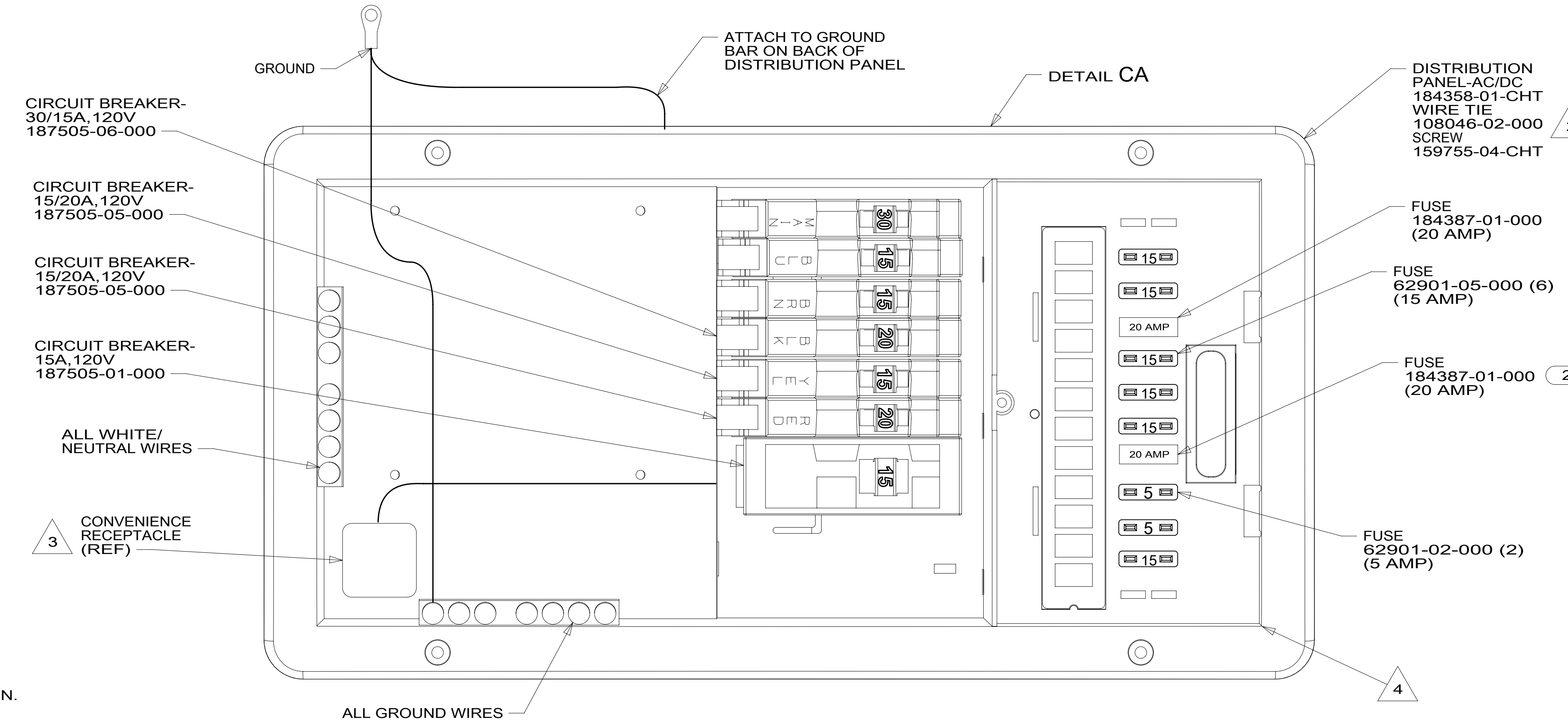
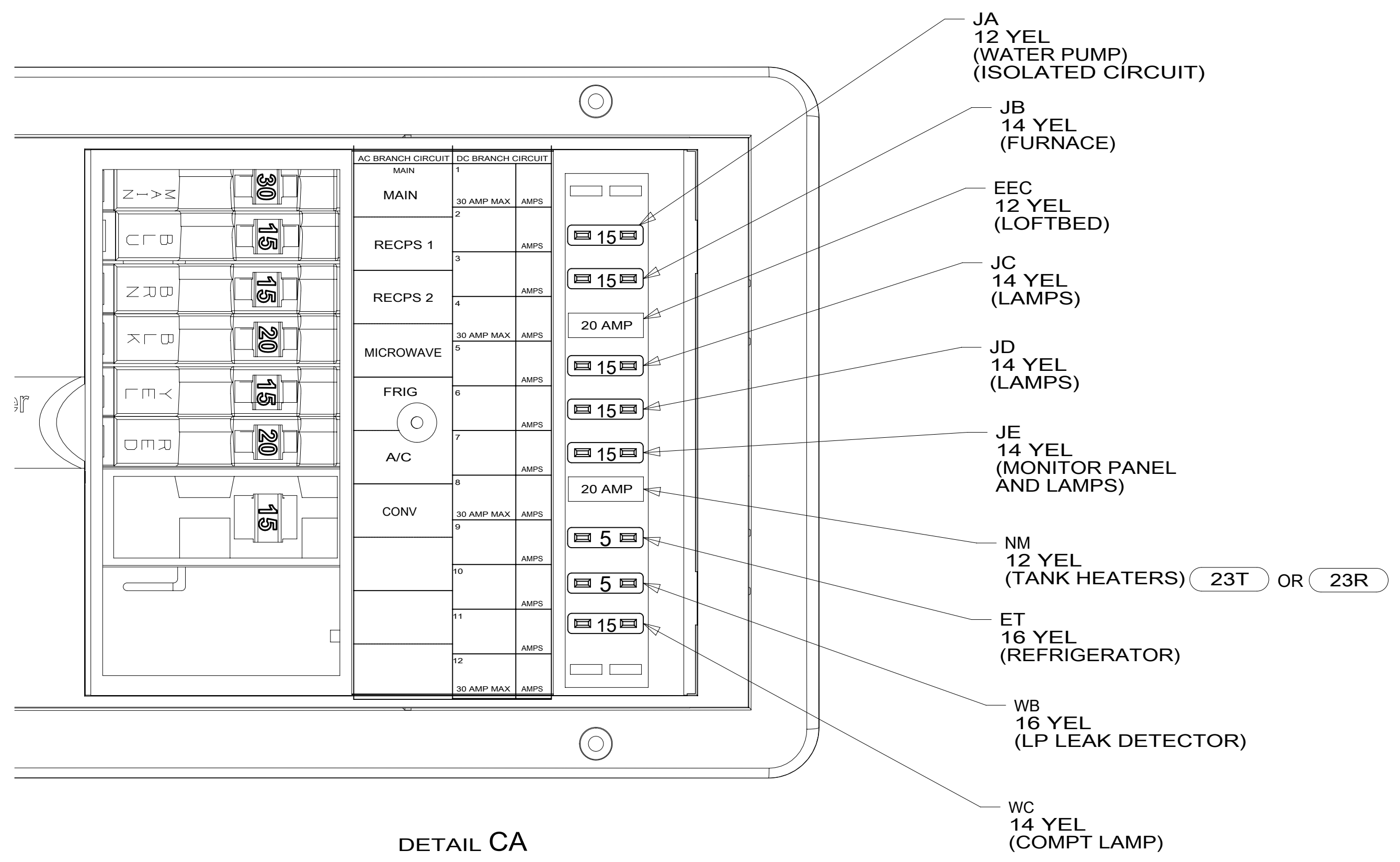
TITLE: LOAD CENTER/ATS ASM

SHEET 2 PART NO 187791 REV

FOR ELECTRICAL TORQUE SPECIFICATIONS SEE DWG NO. 128783-01-000

FOR ELECTRICAL CALLOUTS SEE DWG NO. 121339-01-000

\*187791\*



- 4 SEE WIRING INSTL-BODY, 12V FOR ADDITIONAL INFORMATION.
- 3 CONNECT BLACK WIRE FROM CONVENIENCE RECEPTACLE TO DEDICATED CIRCUIT BREAKER.
- 2 ATTACH TO UNUSED SCREW HOLE ON BACK SIDE OF PANEL TO SECURE WIRES.
1. ALL GROUND WIRES TO BE COVERED WITH TUBING 8041-02-000.

NOTES:

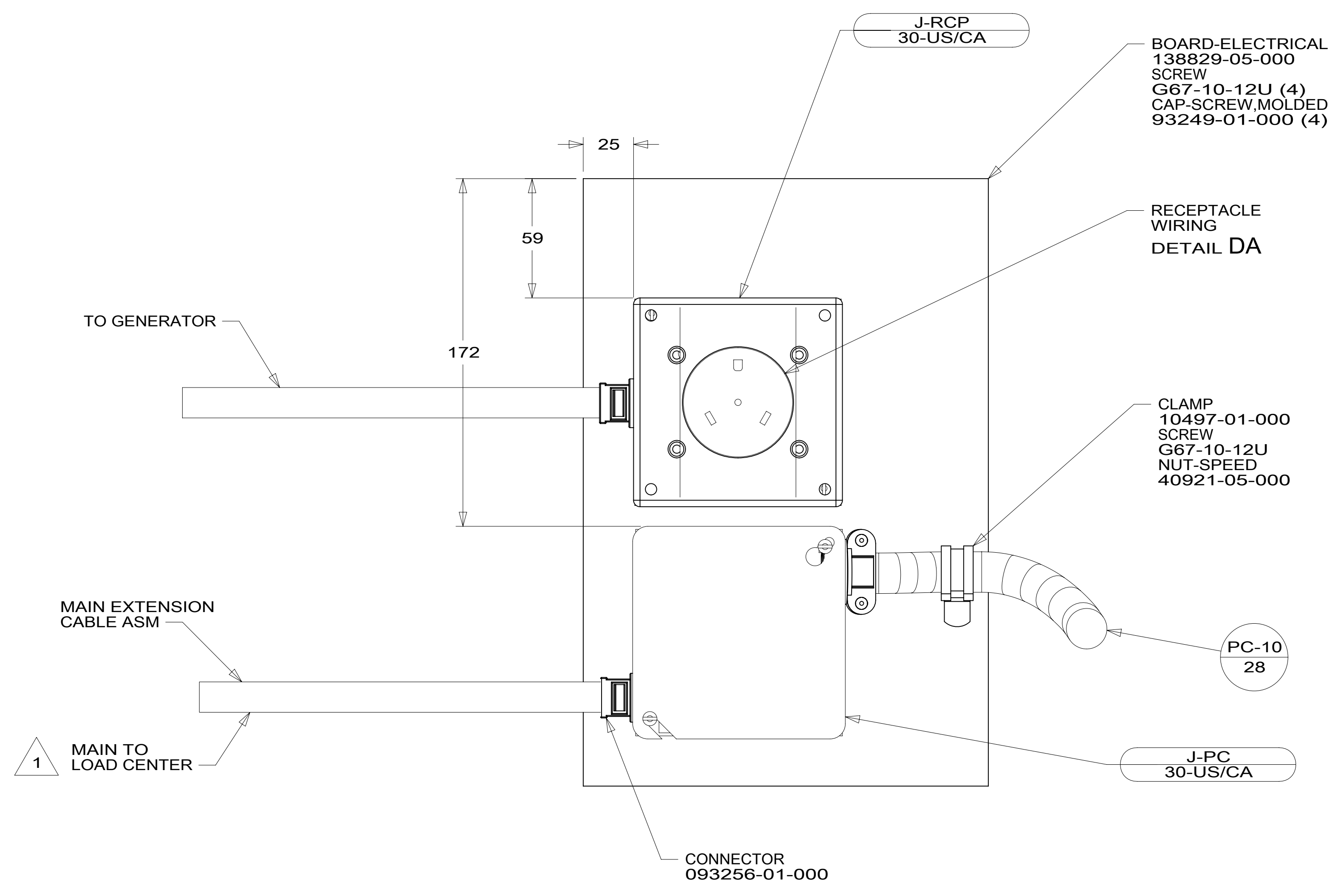
FOR ELECTRICAL TORQUE SPECIFICATIONS SEE DWG NO. 128783-01-000

FOR ELECTRICAL CALLOUTS SEE DWG NO. 121339-01-000

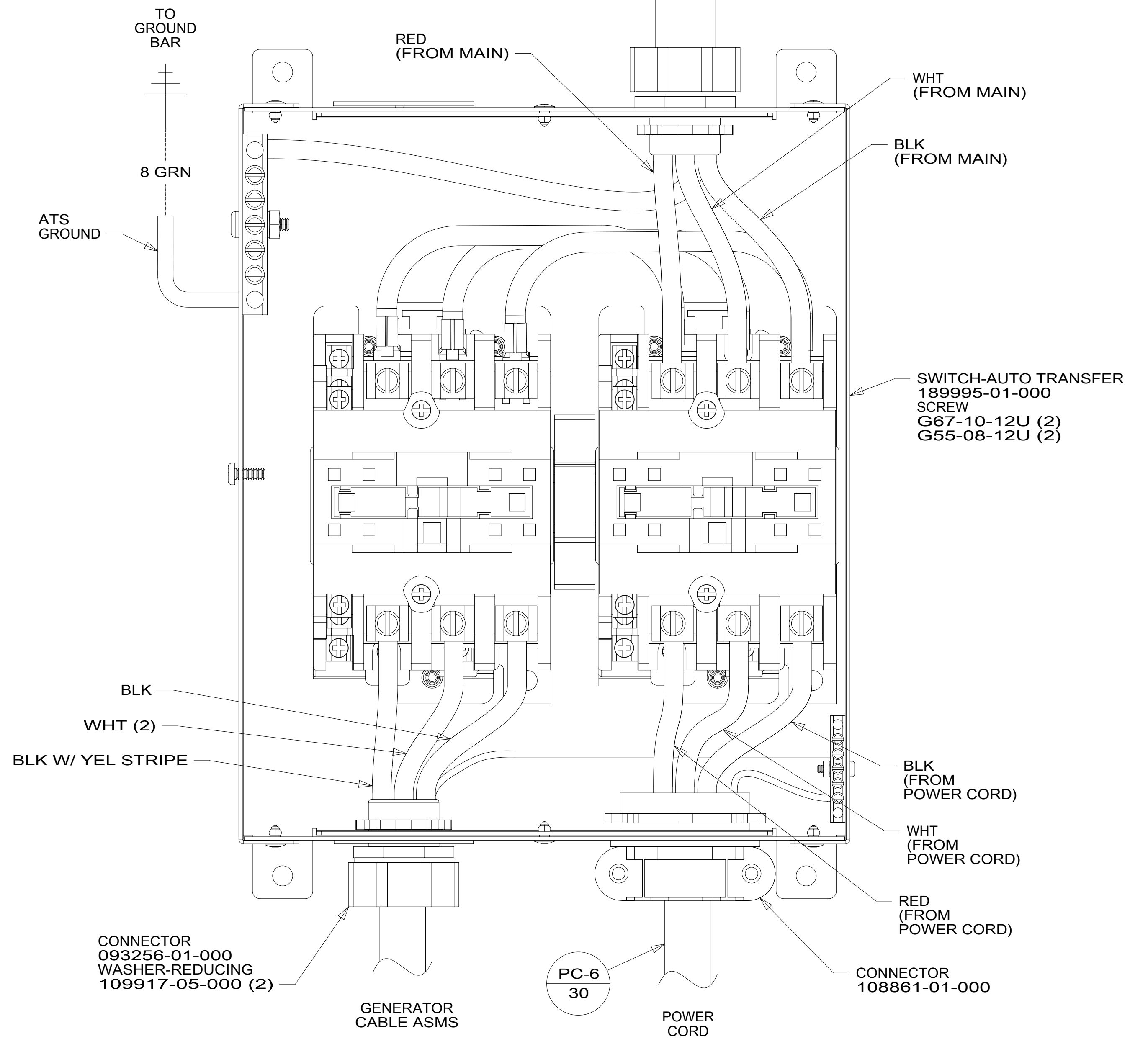
- 23R DRAINAGE SYSTEM/HEAT-PREWIRE
- 23T DRAINAGE SYSTEM-HEATED
- 265 CODES/STANDARDS-CSA/CMVSS
- 1B1 CODES/STANDARDS USA

FIRST USED	
<b>15 A-SERIES</b>	
DO NOT SCALE DRAWING	
TITLE: <b>LOAD CENTER/ATS ASM</b>	
SHEET 3	PART NO <b>187791</b> REV
1 08-Oct-2015	

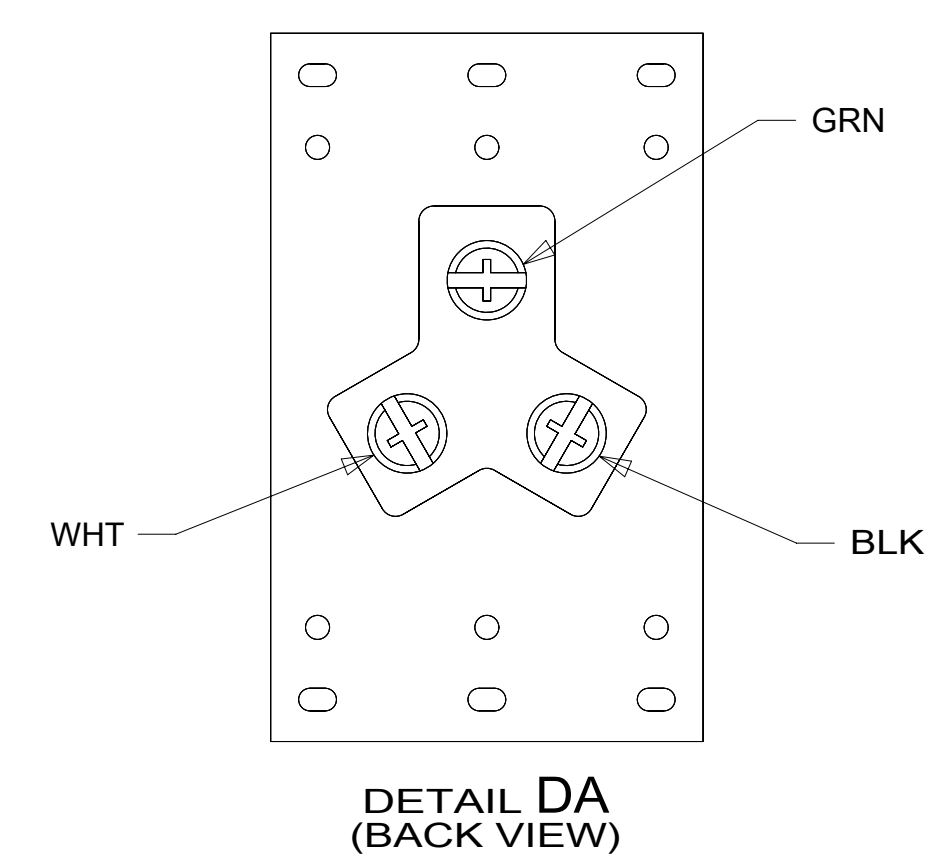
\*187791\*



A26A,A27B



A31C



2 DO NOT CONNECT CABLE TO ATS DURING ASSEMBLY OF LOAD CENTER. CABLE TO BE CONNECTED IN MOTOR HOME PLANT.

1 SEE WIRING INSTL-BODY, 110V FOR ADDITIONAL INFORMATION.

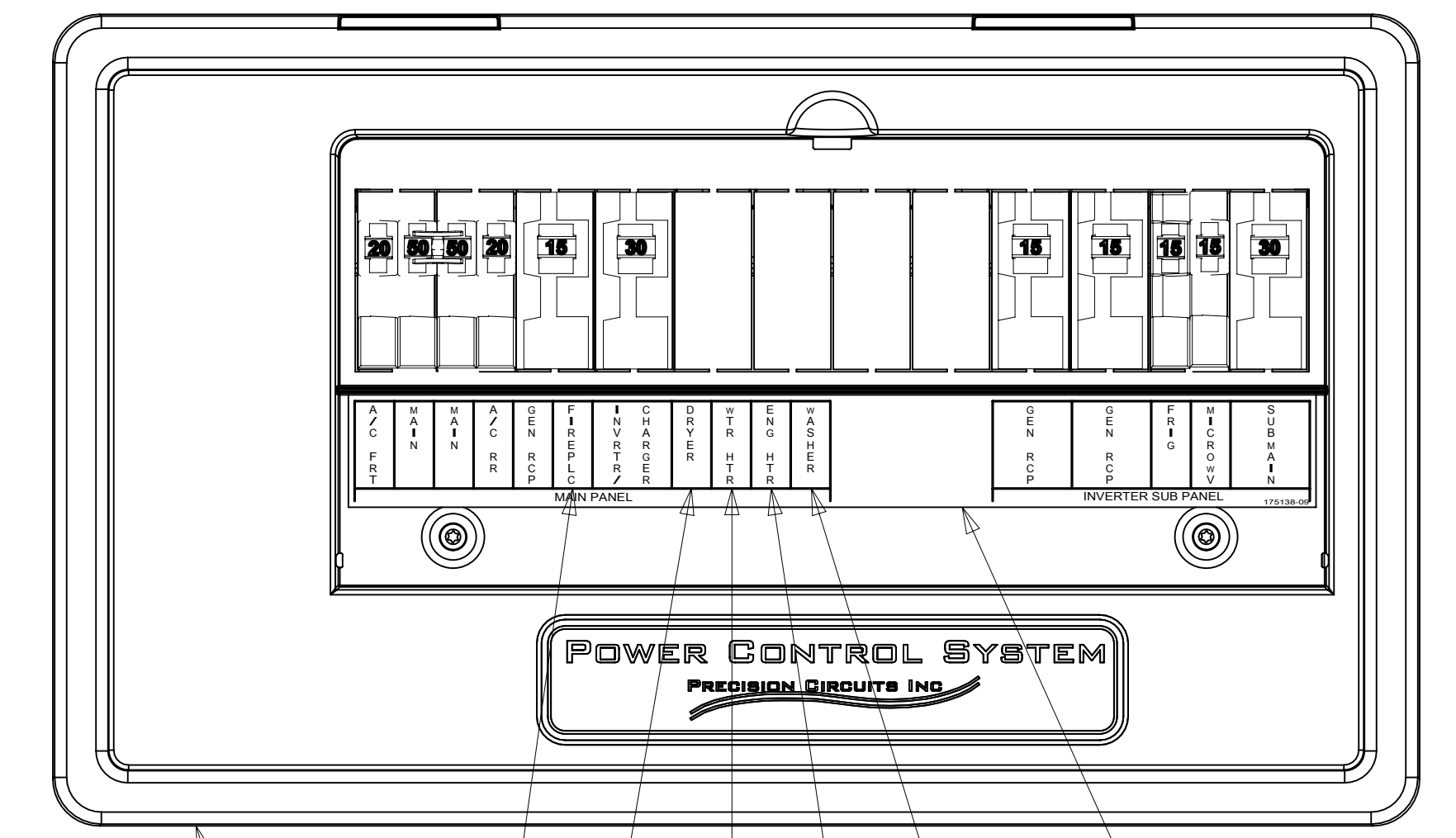
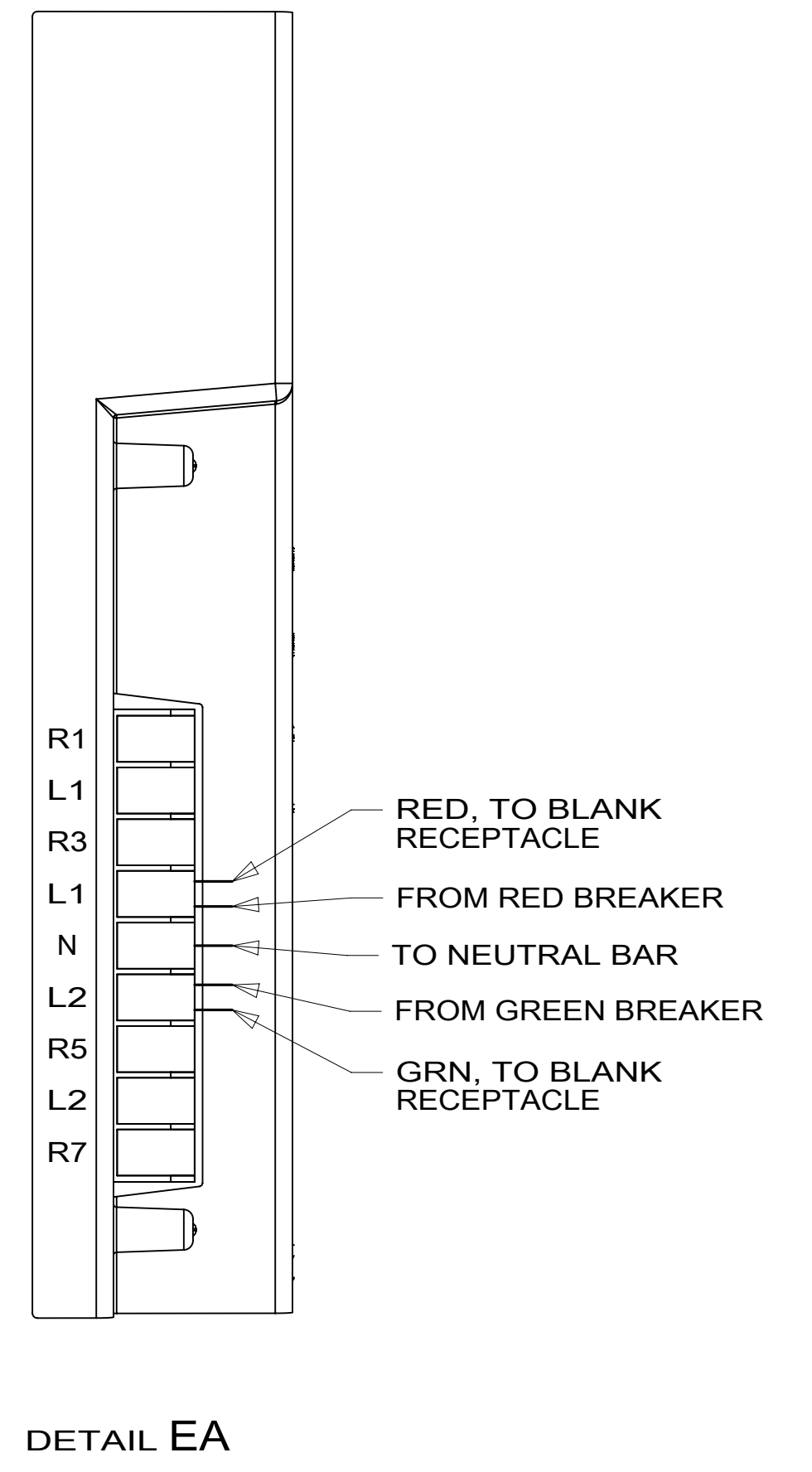
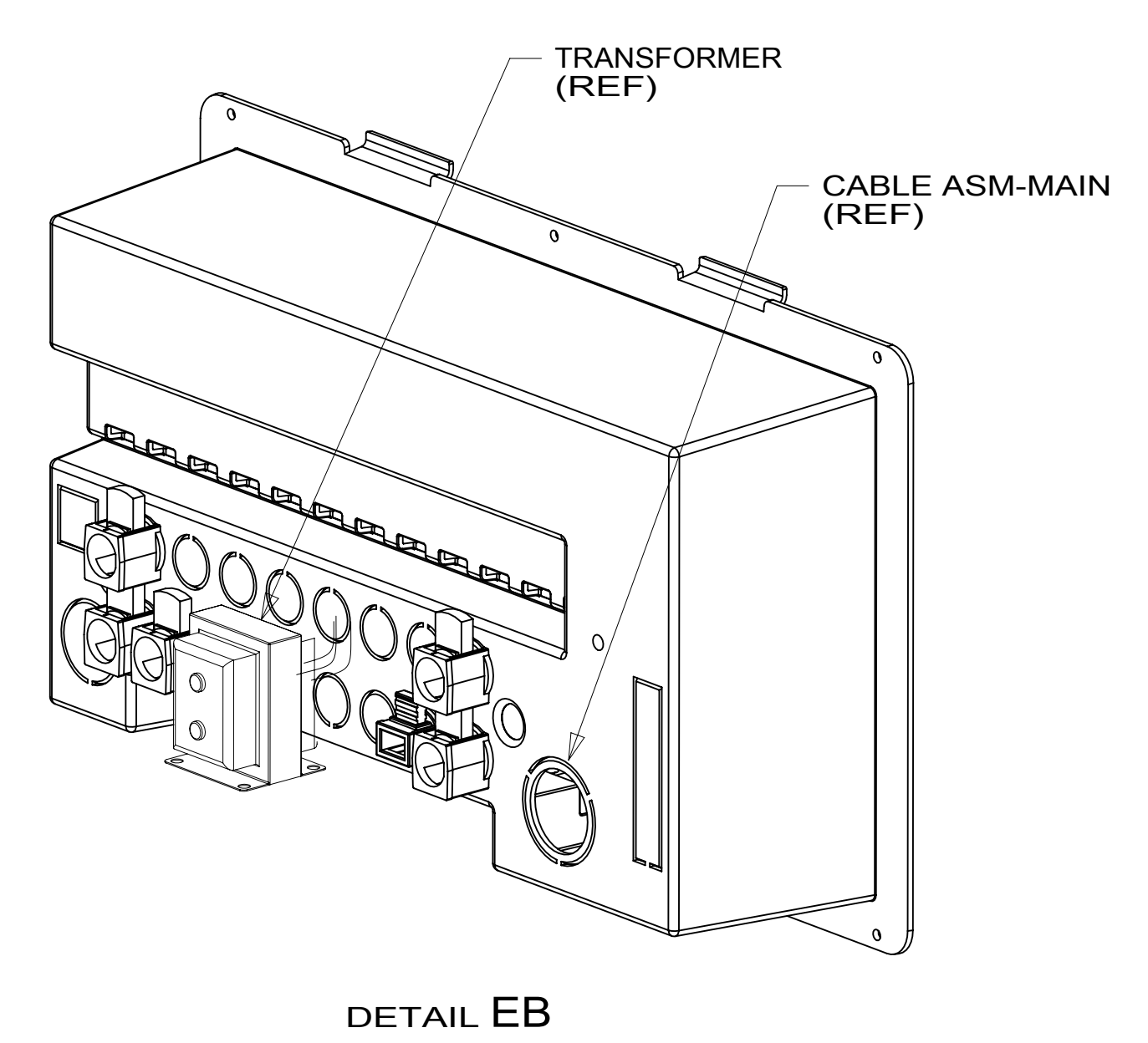
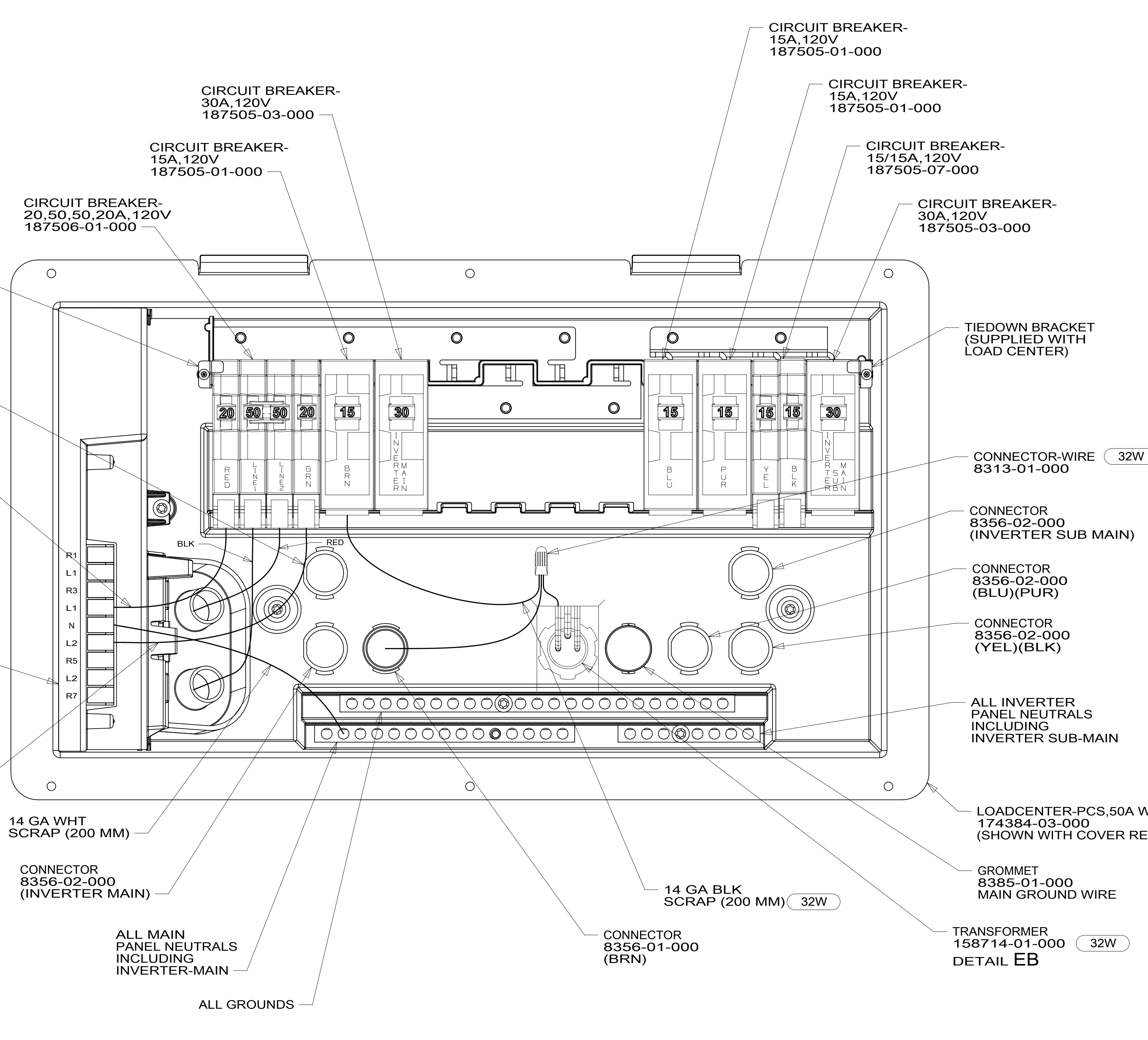
NOTES:

FOR ELECTRICAL TORQUE SPECIFICATIONS SEE DWG NO. 128783-01-000

FOR ELECTRICAL CALLOUTS SEE DWG NO. 121339-01-000

265	CODES/STANDARDS-CSA/CMVSS
1B1	CODES/STANDARDS USA
1B1	265
FIRST USED	
<b>15 A-SERIES</b>	
DO NOT SCALE DRAWING	
TITLE: <b>LOAD CENTER/ATS ASM</b>	
SHEET 4	PART NO <b>187791</b> REV
1 08-Oct-2015	

\*187791\*



- COVER (SUPPLIED WITH LOAD CENTER)
- 15L RESIDENTIAL REFRIGERATOR PKG
- 32W GENERATOR-START,AUTO SYSTEM
- 265 CODES/STANDARDS-CSA/CMVSS
- 1B1 CODES/STANDARDS USA
- 1B1 265

- NOTES:
1. ALL GROUND WIRES TO BE COVERED WITH TUBING 8041-02-000.
  2. REMOVE 400MM FROM OUTER JACKET ON ALL WIRES ENTERING LOAD CENTER AND TRIM INDIVIDUAL CONDUCTORS AS REQUIRED TO MAKE INTERNAL CONNECTIONS
  3. BLACKEN OUT ENG HTR.
  4. BLACKEN OUT FIREPLACE.
  5. BLACKEN OUT DRYER.
  6. BLACKEN OUT WTR HTR.
  7. BLACKEN OUT WASHER.

FOR ELECTRICAL TORQUE SPECIFICATIONS SEE DWG NO. 128783-01-000

X-X

FOR ELECTRICAL CALLOUTS SEE DWG NO. 121339-01-000

FIRST USED

## 15 A-SERIES

DO NOT SCALE DRAWING

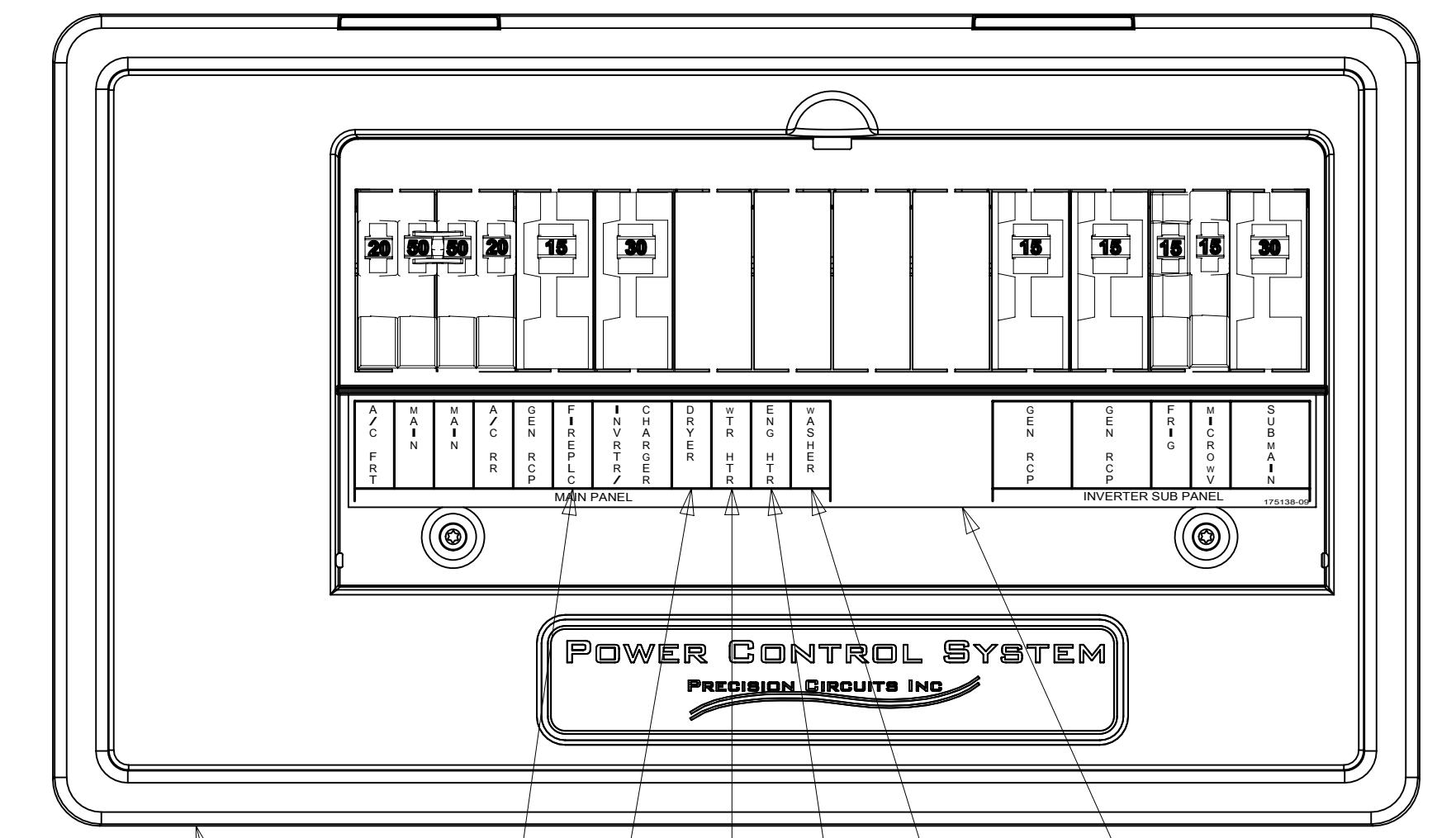
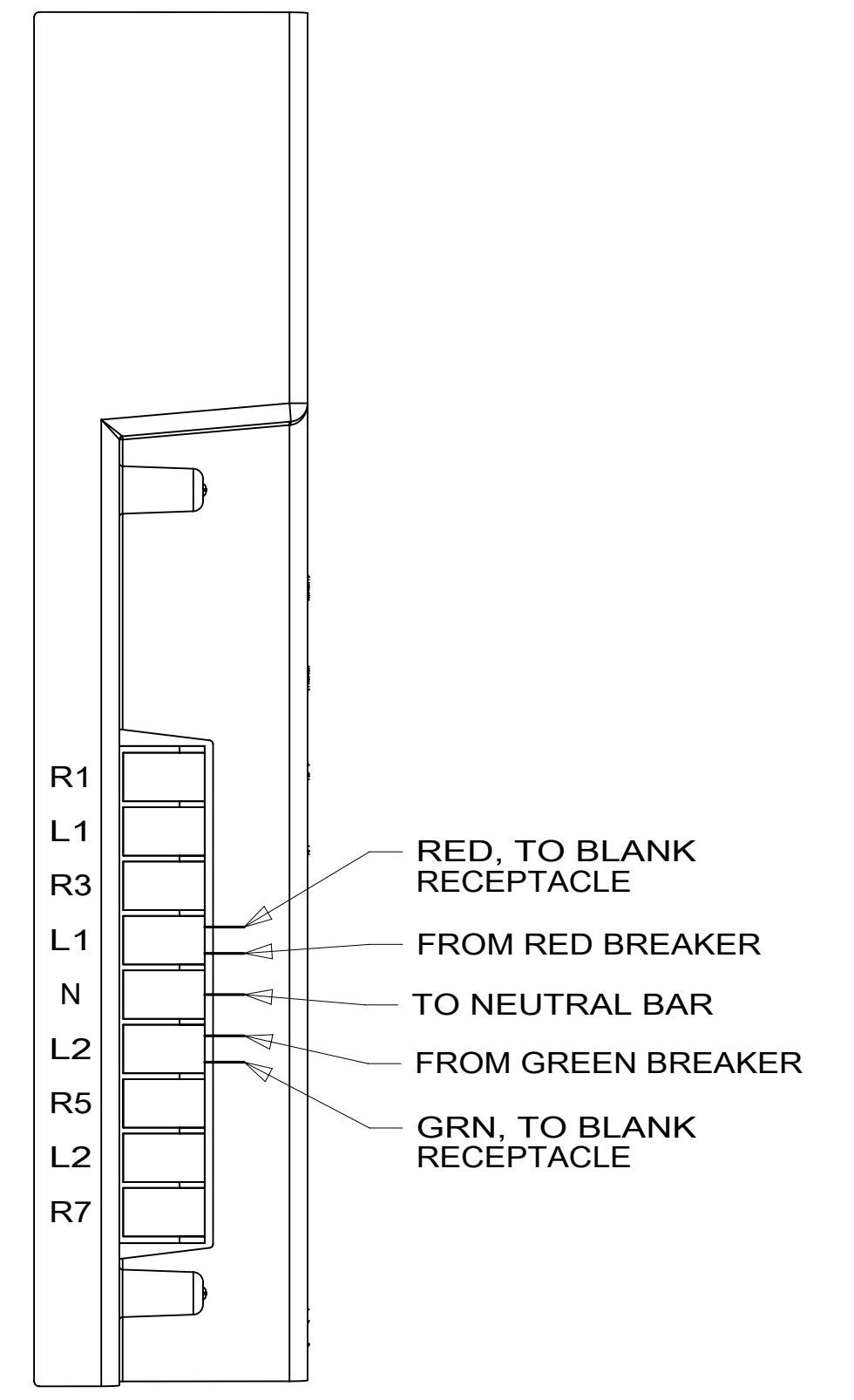
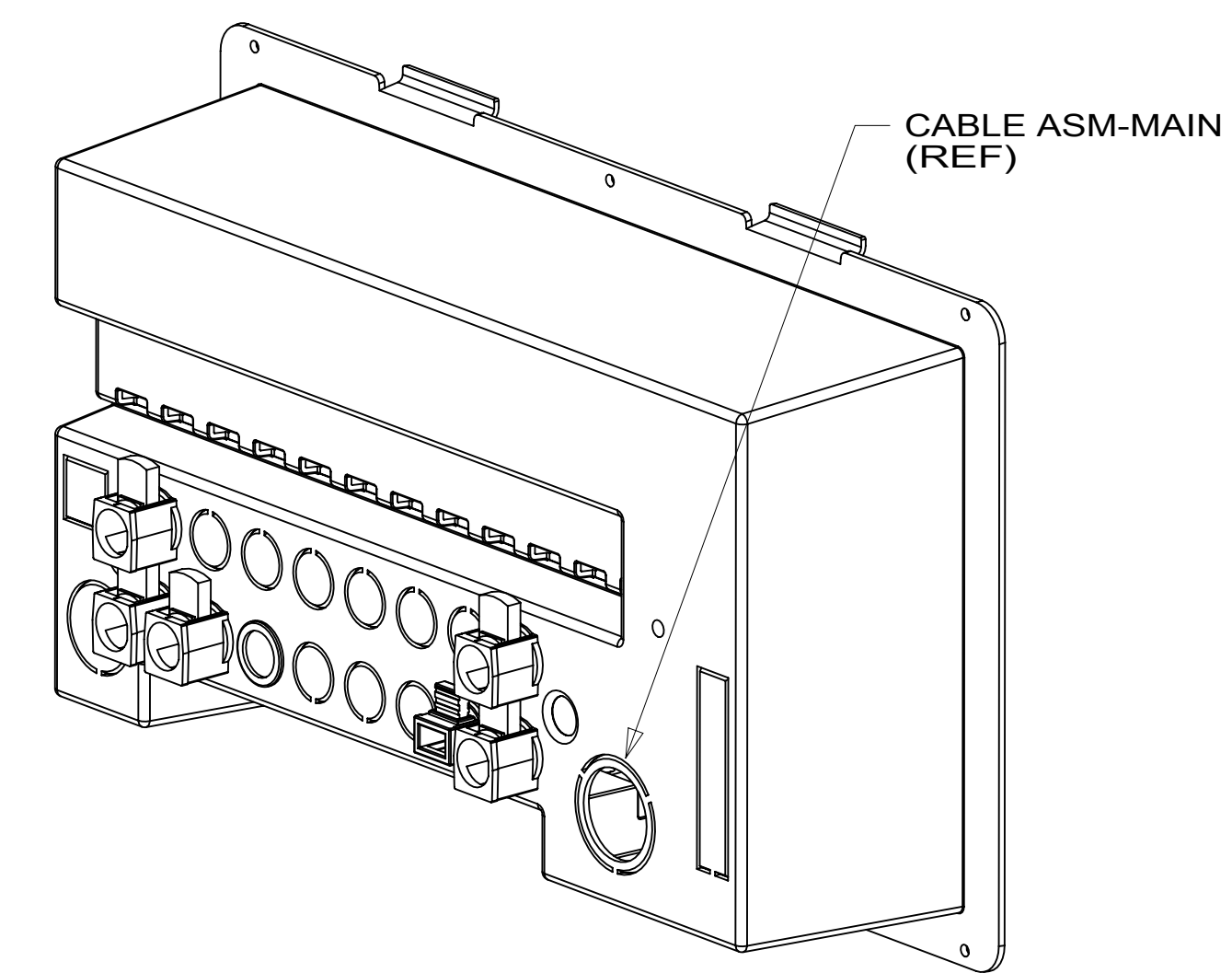
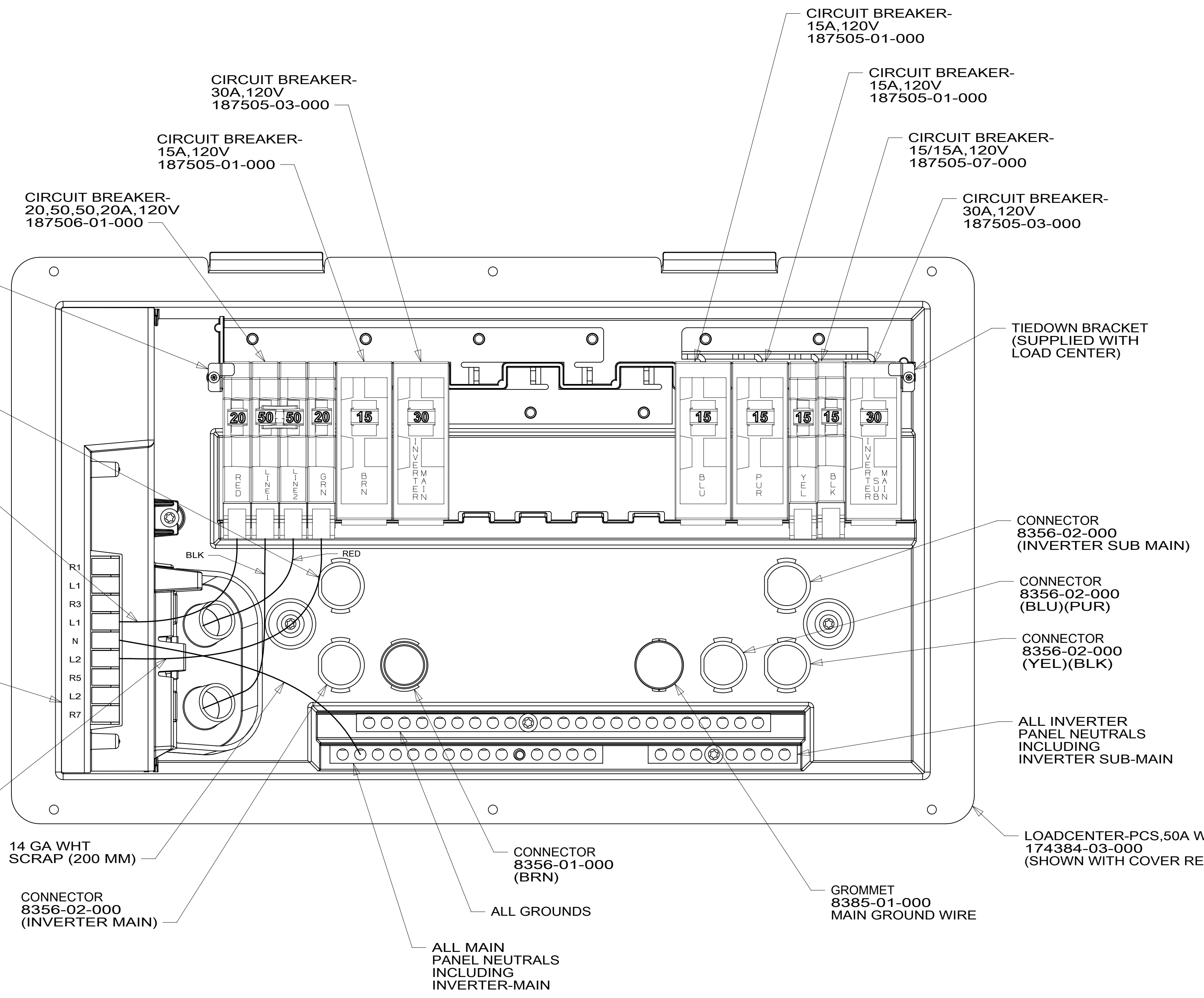
TITLE: **LOAD CENTER/ATS ASM**

SHEET 5 PART NO **187791** REV

08-Oct-2015

A31C WITH 32W AND 15L

\*187791\*



- 7 BLACKEN OUT WASHER.
- 6 BLACKEN OUT WTR HTR.
- 5 BLACKEN OUT DRYER.
- 4 BLACKEN OUT FIREPLACE.
- 3 BLACKEN OUT ENG HTR.

2. REMOVE 400MM FROM OUTER JACKET ON ALL WIRES ENTERING LOAD CENTER AND TRIM INDIVIDUAL CONDUCTORS AS REQUIRED TO MAKE INTERNAL CONNECTIONS
1. ALL GROUND WIRES TO BE COVERED WITH TUBING 8041-02-000.

NOTES:

FOR ELECTRICAL TORQUE SPECIFICATIONS SEE DWG NO. 128783-01-000

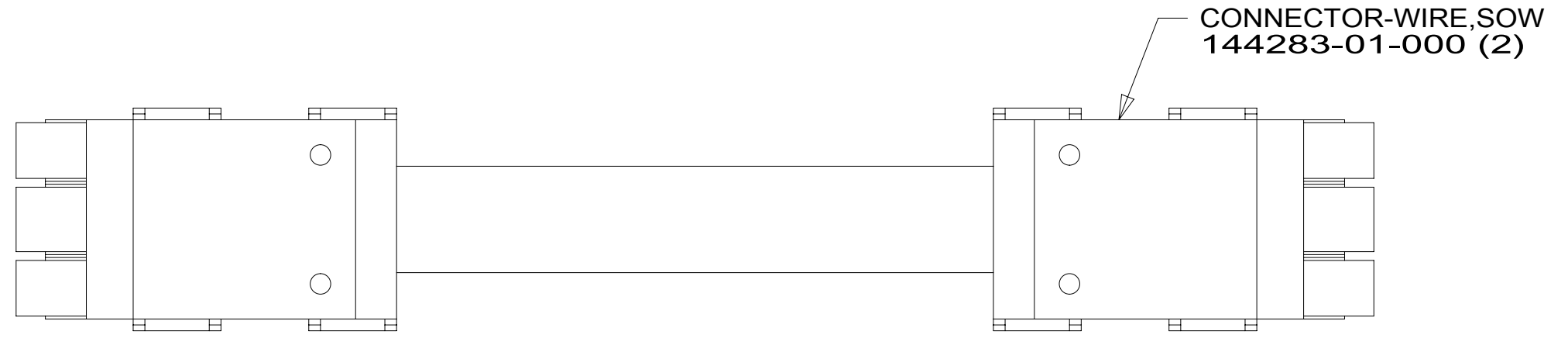
FOR ELECTRICAL CALLOUTS SEE DWG NO. 121339-01-000

- 144 REFRIGERATOR-DOUBLE DOOR
- 265 CODES/STANDARDS-CSA/CMVSS
- 1B1 CODES/STANDARDS USA

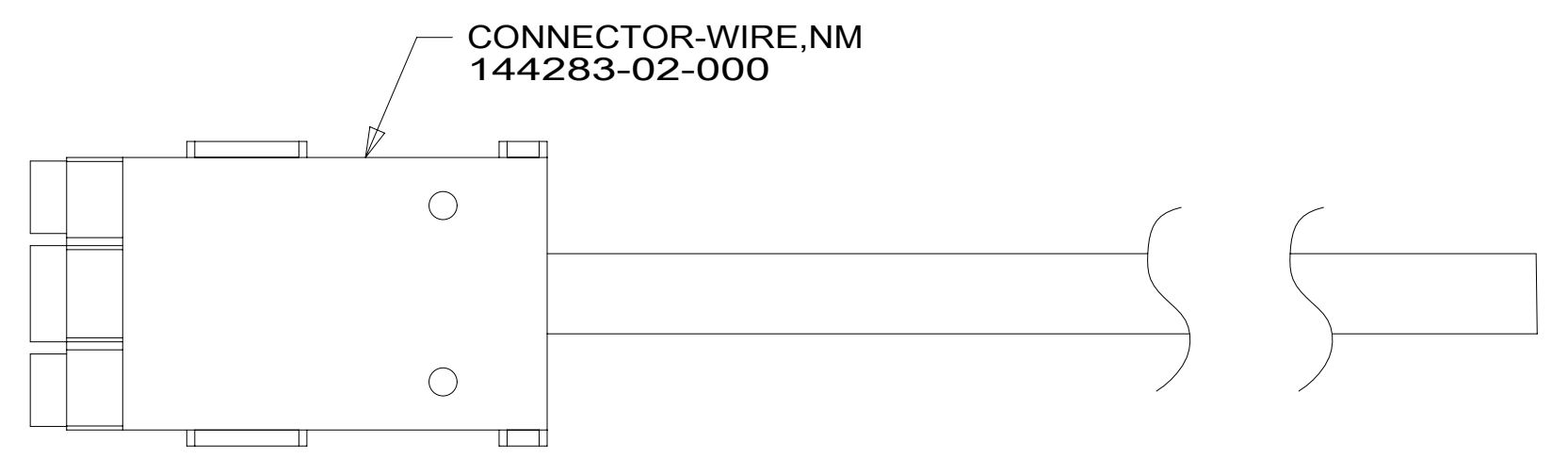
1B1	265
FIRST USED	
<b>15 A-SERIES</b>	
DO NOT SCALE DRAWING	
TITLE: <b>LOAD CENTER/ATS ASM</b>	
SHEET 6	PART NO <b>187791</b> REV
08-Oct-2015	

A31C WITH 144

\*187791\*



DETAIL GA



DETAIL GB



DETAIL GC

- 265 CODES/STANDARDS-CSA/CMVSS
- 1B1 CODES/STANDARDS USA
- 1B1 265

FOR ELECTRICAL TORQUE SPECIFICATIONS SEE DWG NO. 128783-01-000

X-X FOR ELECTRICAL CALLOUTS SEE DWG NO. 121339-01-000

FIRST USED	
<b>15 A-SERIES</b>	
DO NOT SCALE DRAWING	
TITLE: <b>LOAD CENTER/ATS ASM</b>	
SHEET 7	PART NO <b>187791</b> REV
1 08-Oct-2015	

\*187791\*