



DANGER

Danger of electrical shock, burns or death. Always remove all power sources before attempting any repair, service or diagnostic work. Power can be present from shore power, generator, inverter or battery. All power sources must be disabled and secured before performing any service.



CAUTION


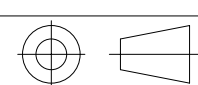
If you lack the skills, tools or equipment to perform diagnostic or repair work leave such work to an authorized Winnebago Industries dealer or other qualified shop.

DRAWING NO.	MODEL	SHEETS
187789-01	A26A	1,2,3,8
187789-02	A27B	1,4,5,8
187789-03	A31C	1,6,7,8

	A26A	A27B	A31C
CABLE ASM-CHASSIS GND EXT (BLK)	133566-12-030	133566-12-011	133566-12-030
CABLE ASM-CHASSIS BATTERY DISCONNECT SUPPLY (RED)	141415-32-051	141415-32-028	141415-32-062
CABLE ASM-COACH BATTERY DISCONNECT SUPPLY (YEL)	141416-52-054	141416-52-023	141416-52-036
CABLE ASM-COACH BATTERY GND (BLK)	133567-12-007	133567-12-007	133567-12-008
CABLE ASM-CHASSIS BATTERY DISCONNECT RETURN (PUR)	141415-12-028	141415-12-027	141415-12-034
CABLE ASM-GENERATOR (GRN)	141415-42-035	141415-42-065	141415-42-100
CABLE ASM-GENERATOR GND (BLK)	133566-12-008	133566-12-008	
LEVELING SYSTEM POWER CABLE (BLU)	141415-29-012	141415-29-012	141415-29-012
LEVELING SYSTEM GND CABLE (BLK)	133566-12-008	133566-12-008	133566-12-008
CABLE ASM-STARTER (RED)	141416-32-031	141416-32-010	141416-32-034
CABLE ASM-COACH BATTERY FUSE (YEL)	141416-52-004	141416-52-003	141416-52-004
CABLE ASM-CHASSIS BATTERY FUSE (RED)	141415-32-003	141415-32-003	141415-32-003
CABLE ASM-FROM COACH BATTERY TO INVERTER FUSE (ORG)			175207-62-004
CABLE ASM-FROM INVERTER FUSE TO INVERTER BATTERY DISCONNECT (ORG)			175207-62-016
CABLE ASM-FROM BATTERY DISCONNECT TO POSITIVE POST ON INVERTER (ORG)			175207-62-006
CABLE ASM-FROM COACH BATTERY TO INVERTER NEGATIVE TERMINAL (BLK)			175211-01-018
CABLE ASM-TEMPERATURE			
CABLE ASM-JUMPER BETWEEN POSITIVE POSTS ON COACH BATTERY (YEL)			141417-52-004 141417-51-002 ← 15L
CABLE ASM-JUMPER BETWEEN NEGATIVE POSTS ON COACH BATTERY (BLK)			133568-12-004 133568-11-002 ← 15L
CABLE ASM-INVERTER GROUND (GRN)			136145-01-020

RELEASE	REV/DATE	DWG NO	187789
REV ZONE	REVISION RECORD	DATE	DTR-ORIG

- 15L RESIDENTIAL REFRIGERATOR PKG
- 265 CODES/STANDARDS-CSA/CMVSS
- 1B1 CODES/STANDARDS USA
- 1B1 265

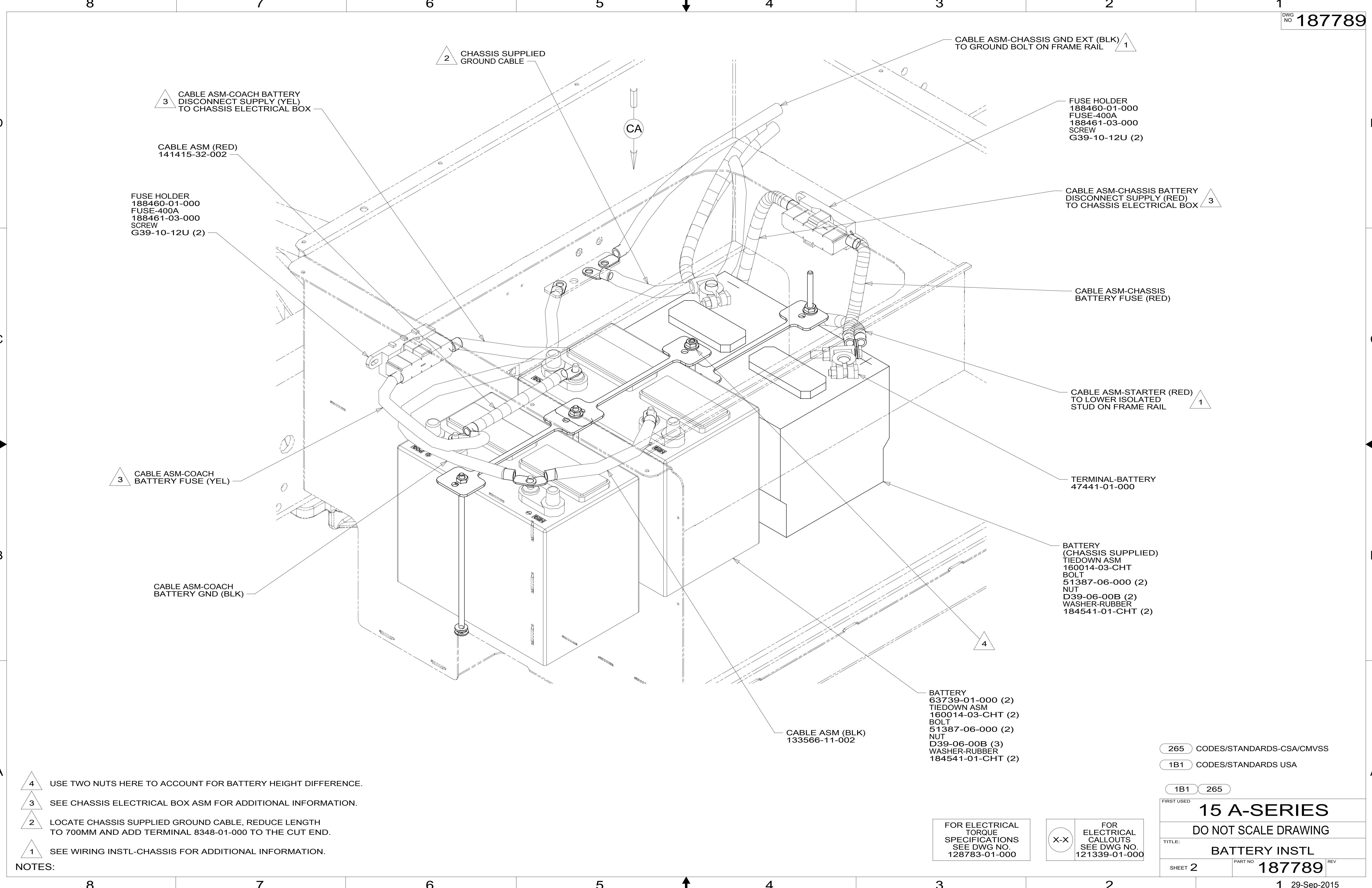
		COPYRIGHT 2014 WINNEBAGO INDUSTRIES, INC.	
DTR	ORIG. DATE	ALL DIMENSIONS ARE IN MILLIMETERS	
CHKR		FIRST USED	
P.E.		15 A-SERIES	
M.E.		MATERIAL:	
DSNR		UNSPECIFIED TOLERANCES ARE:	
		WHOLE DIM (X)	: 3
		ONE-PLACE (X.X)	: 1.5
		TWO-PLACE (X.XX)	: 0.50
		ANGLE	: 1°
THIRD ANGLE PROJECTION		DO NOT SCALE DRAWING REFER TO ES0018 FOR FASTENER TIGHTENING GUIDELINES	
TITLE: BATTERY INSTL			
SHEET 1 OF 8	PART NO	187789	REV
REF:		1	29-Sep-2015

FOR ELECTRICAL
TORQUE
SPECIFICATIONS
SEE DWG NO.
128783-01-000

FOR
ELECTRICAL
CALLOUTS
SEE DWG NO.
121339-01-000

NOTES:
1 CABLE ASM-TEMPERATURE IS PART OF WIRE ASM-CHASSIS.

187789



- 4 USE TWO NUTS HERE TO ACCOUNT FOR BATTERY HEIGHT DIFFERENCE.
- 3 SEE CHASSIS ELECTRICAL BOX ASM FOR ADDITIONAL INFORMATION.
- 2 LOCATE CHASSIS SUPPLIED GROUND CABLE, REDUCE LENGTH TO 700MM AND ADD TERMINAL 8348-01-000 TO THE CUT END.
- 1 SEE WIRING INSTL-CHASSIS FOR ADDITIONAL INFORMATION.

NOTES:

FOR ELECTRICAL TORQUE SPECIFICATIONS SEE DWG NO. 128783-01-000

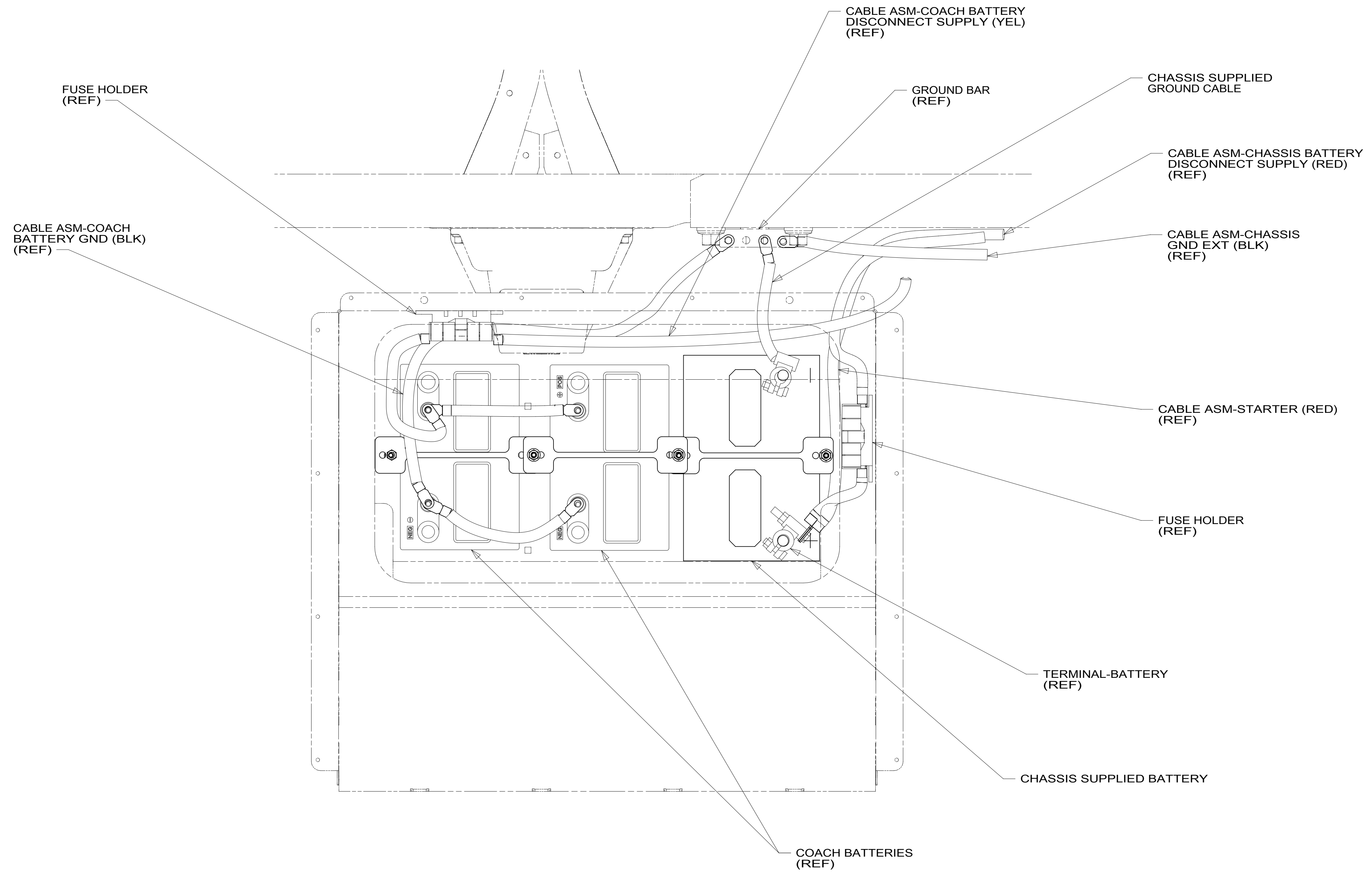
FOR ELECTRICAL CALLOUTS SEE DWG NO. 121339-01-000

265 CODES/STANDARDS-CSA/CMVSS
1B1 CODES/STANDARDS USA

1B1 265

FIRST USED	
15 A-SERIES	
DO NOT SCALE DRAWING	
TITLE: BATTERY INSTL	
SHEET 2	PART NO 187789 REV 1
1 29-Sep-2015	

187789



VIEW CA

265 CODES/STANDARDS-CSA/CMVSS

1B1 CODES/STANDARDS USA

1B1 265

FIRST USED **15 A-SERIES**

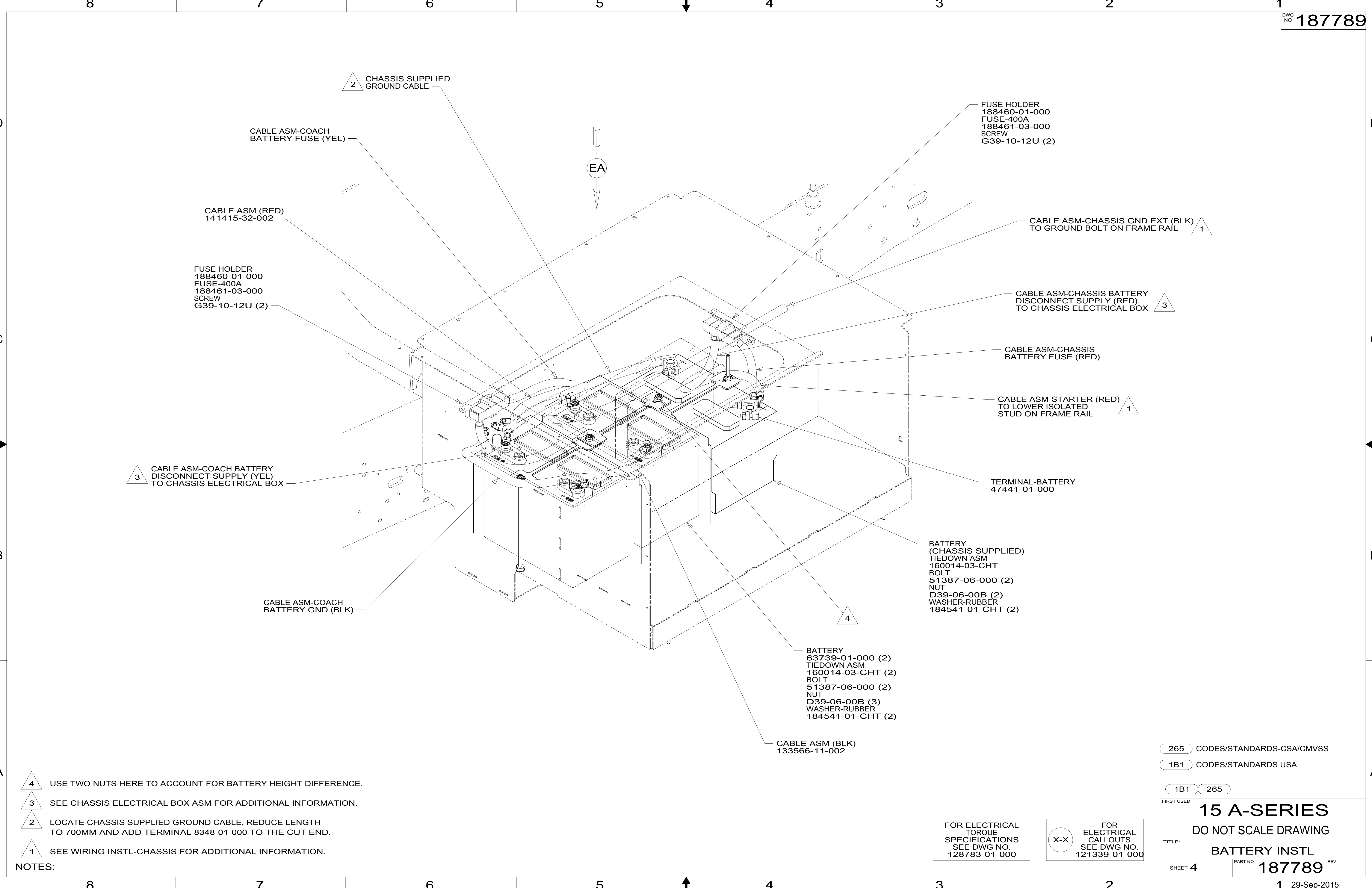
DO NOT SCALE DRAWING

TITLE: **BATTERY INSTL**

SHEET 3 PART NO **187789** REV

FOR ELECTRICAL TORQUE SPECIFICATIONS SEE DWG NO. 128783-01-000

X-X FOR ELECTRICAL CALLOUTS SEE DWG NO. 121339-01-000



- 4** USE TWO NUTS HERE TO ACCOUNT FOR BATTERY HEIGHT DIFFERENCE.
- 3** SEE CHASSIS ELECTRICAL BOX ASM FOR ADDITIONAL INFORMATION.
- 2** LOCATE CHASSIS SUPPLIED GROUND CABLE, REDUCE LENGTH TO 700MM AND ADD TERMINAL 8348-01-000 TO THE CUT END.
- 1** SEE WIRING INSTL-CHASSIS FOR ADDITIONAL INFORMATION.

NOTES:

265 CODES/STANDARDS-CSA/CMVSS
1B1 CODES/STANDARDS USA

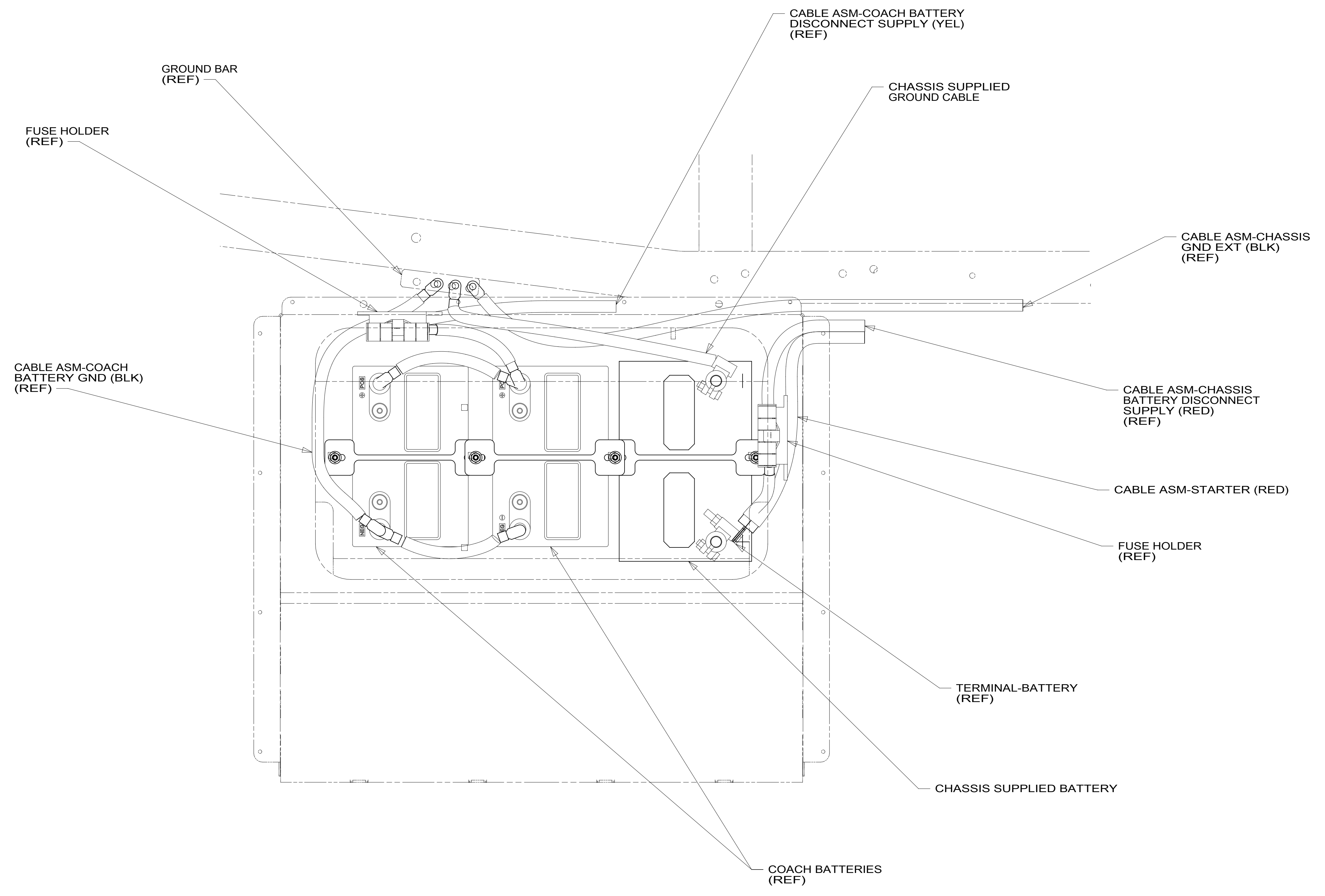
1B1 265

FIRST USED	
15 A-SERIES	
DO NOT SCALE DRAWING	
TITLE: BATTERY INSTL	
SHEET 4	PART NO 187789 REV

FOR ELECTRICAL TORQUE SPECIFICATIONS SEE DWG NO. 128783-01-000

FOR ELECTRICAL CALLOUTS SEE DWG NO. 121339-01-000

187789



VIEW EA

265 CODES/STANDARDS-CSA/CMVSS

1B1 CODES/STANDARDS USA

1B1 265

FIRST USED **15 A-SERIES**

DO NOT SCALE DRAWING

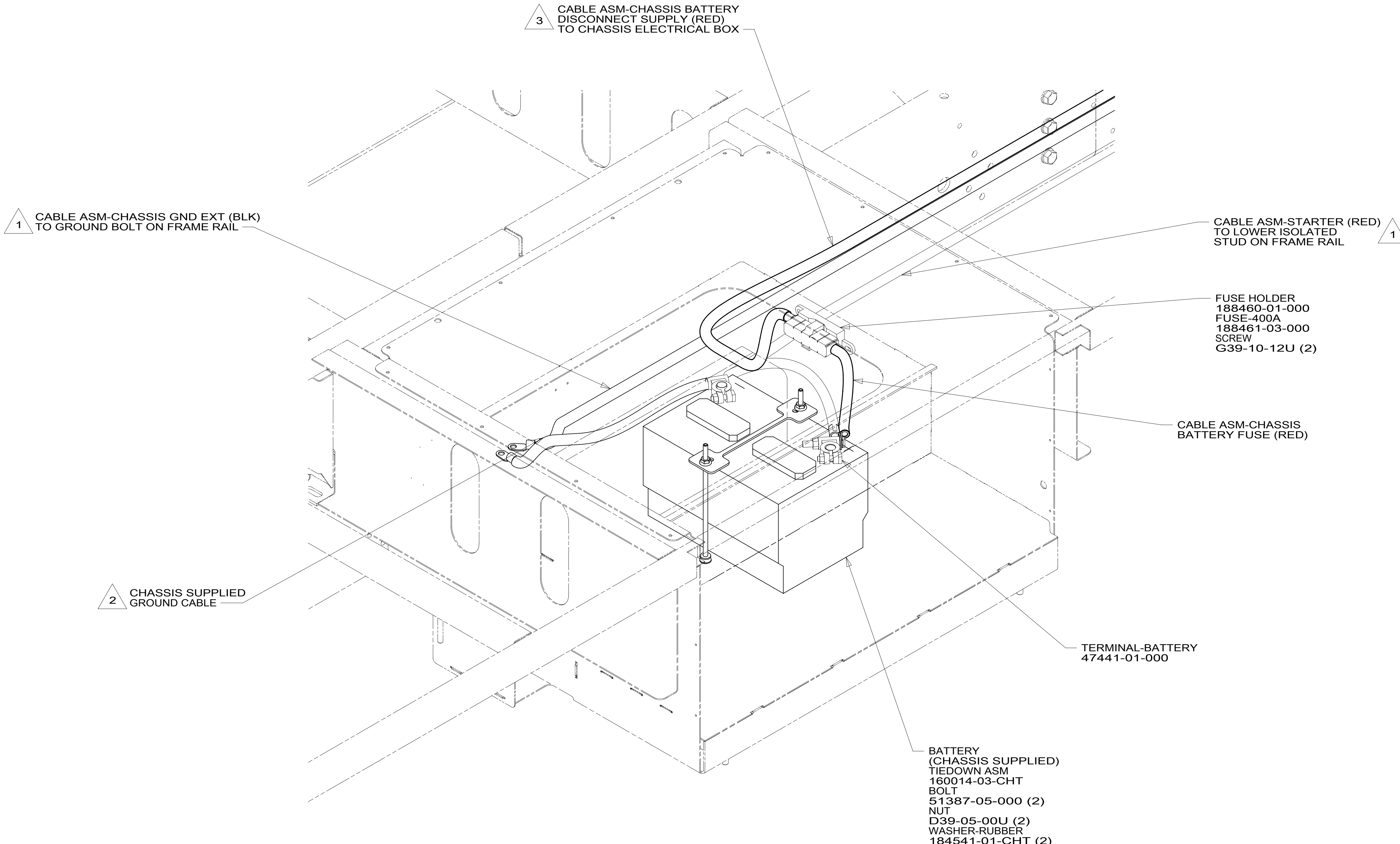
TITLE: **BATTERY INSTL**

SHEET 5 PART NO **187789** REV

FOR ELECTRICAL TORQUE SPECIFICATIONS SEE DWG NO. 128783-01-000

FOR ELECTRICAL CALLOUTS SEE DWG NO. 121339-01-000

187789



- 3 SEE CHASSIS ELECTRICAL BOX ASM FOR ADDITIONAL INFORMATION.
- 2 LOCATE CHASSIS SUPPLIED GROUND CABLE, REDUCE LENGTH TO 700MM AND ADD TERMINAL 8348-01-000 TO THE CUT END.
- 1 SEE WIRING INSTL-CHASSIS FOR ADDITIONAL INFORMATION.

NOTES:

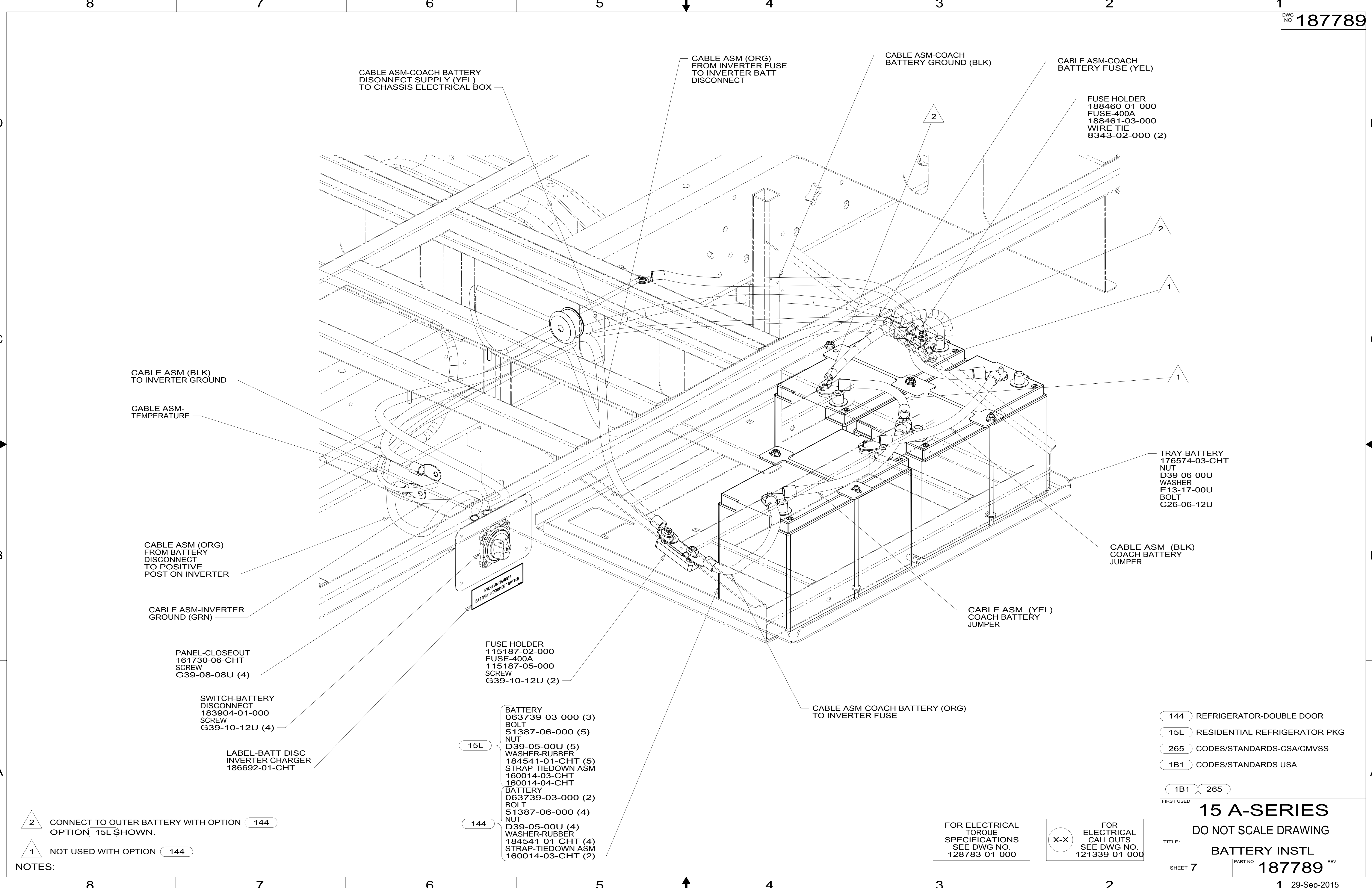
FOR ELECTRICAL TORQUE SPECIFICATIONS SEE DWG NO. 128783-01-000

FOR ELECTRICAL CALLOUTS SEE DWG NO. 121339-01-000

265 CODES/STANDARDS-CSA/CMVSS
 1B1 CODES/STANDARDS USA
 1B1 265

FIRST USED
15 A-SERIES
 DO NOT SCALE DRAWING
 TITLE: **BATTERY INSTL**
 SHEET 6 PART NO **187789** REV

187789



2 CONNECT TO OUTER BATTERY WITH OPTION 144
OPTION 15L SHOWN.

1 NOT USED WITH OPTION 144

NOTES:

- 15L BATTERY 063739-03-000 (3)
BOLT 51387-06-000 (5)
NUT D39-05-00U (5)
WASHER-RUBBER 184541-01-CHT (5)
STRAP-TIEDOWN ASM 160014-03-CHT
160014-04-CHT
- 144 BATTERY 063739-03-000 (2)
BOLT 51387-06-000 (4)
NUT D39-05-00U (4)
WASHER-RUBBER 184541-01-CHT (4)
STRAP-TIEDOWN ASM 160014-03-CHT (2)

- 144 REFRIGERATOR-DOUBLE DOOR
- 15L RESIDENTIAL REFRIGERATOR PKG
- 265 CODES/STANDARDS-CSA/CMVSS
- 1B1 CODES/STANDARDS USA

1B1 265

FIRST USED

15 A-SERIES

DO NOT SCALE DRAWING

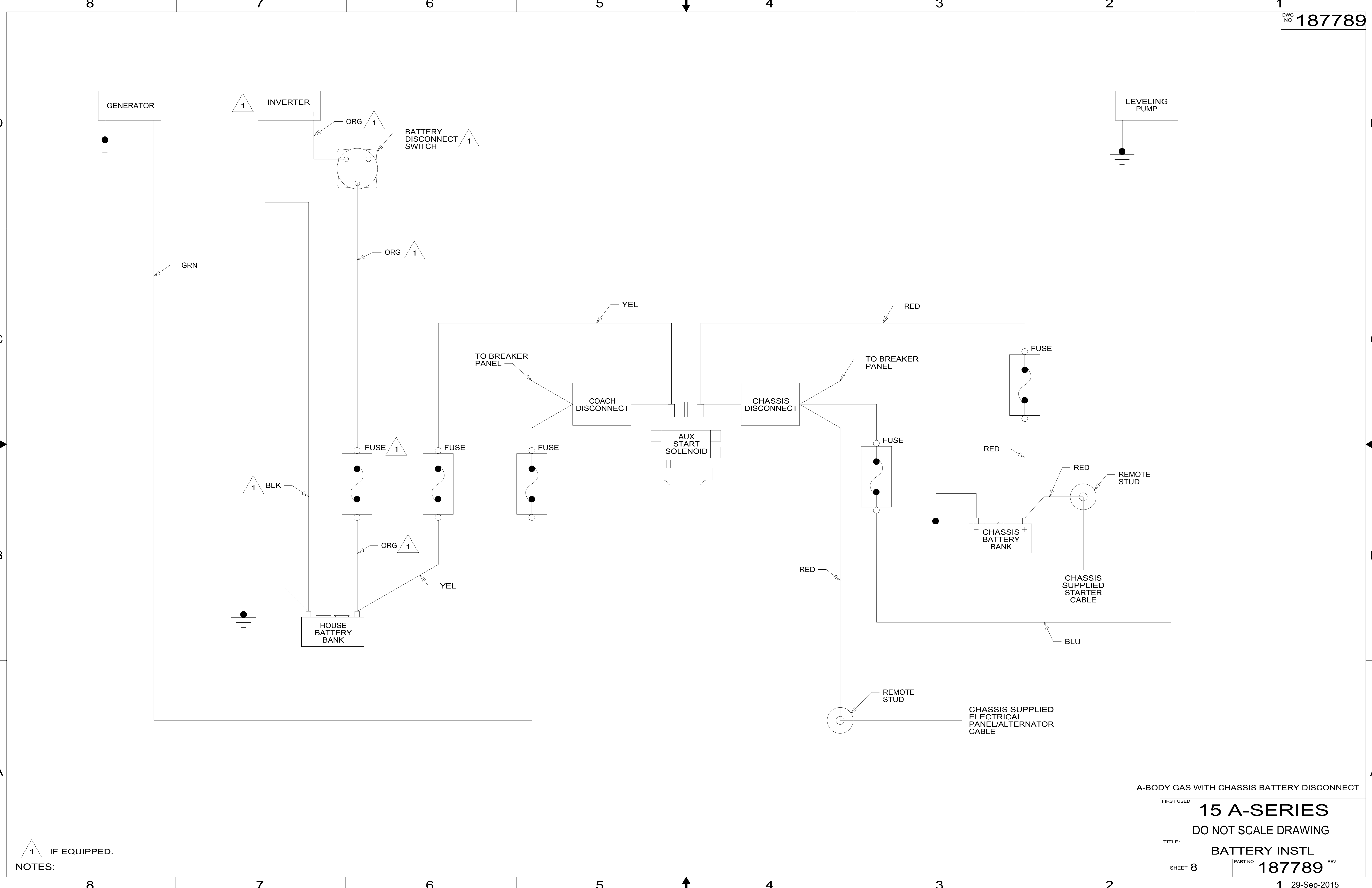
TITLE: **BATTERY INSTL**

SHEET 7 PART NO **187789** REV

FOR ELECTRICAL TORQUE SPECIFICATIONS SEE DWG NO. 128783-01-000

X-X FOR ELECTRICAL CALLOUTS SEE DWG NO. 121339-01-000

187789



NOTES:
1 IF EQUIPPED.

A-BODY GAS WITH CHASSIS BATTERY DISCONNECT

FIRST USED	15 A-SERIES	
TITLE:	DO NOT SCALE DRAWING	
SHEET 8	PART NO	187789
	REV	

187789