



**DANGER**

**Danger of electrical shock, burns or death.** Always remove all power sources before attempting any repair, service or diagnostic work. Power can be present from shore power, generator, inverter or battery. All power sources must be disabled and secured before performing any service.



**CAUTION**

If you lack the skills, tools or equipment to perform diagnostic or repair work leave such work to an authorized Winnebago Industries dealer or other qualified shop.

DRAWING NO.	MODEL	SHEET
187621-01	170C	1,2
187621-02	170C	1,3

RELEASE	REV/DATE	DWG NO	187621
REV ZONE	A	REVISION RECORD	DATE DFT-ORIG

	170C
CABLE ASM-STARTER (RED)	141415-37-013
CABLE ASM-COACH BATTERY (YEL)	141415-52-048
CABLE ASM-COACH BATTERY GND (BLK)	133566-17-009
CABLE ASM-GENERATOR (GRN)	141415-42-055
CABLE ASM-GENERATOR GND (BLK)	133566-17-020
CABLE ASM-JUMPER,POS	141415-52-022
CABLE ASM-JUMPER,NEG	133566-17-022

22W

22W

- 22W BATTERY-SECOND
- 265 CODES/STANDARDS-CSA/CMVSS
- 1B1 CODES/STANDARDS USA

1B1 265



DFT-ORIG	ORIG. DATE
CHKR	ALL DIMENSIONS ARE IN MILLIMETERS
P.E.	
M.E.	FIRST USED
DSNR	15 100-SERIES
UNSPECIFIED TOLERANCES ARE:	
WHOLE DIM (X)	MATERIAL:
ONE-PLACE (X.X)	
TWO-PLACE (X.XX)	
ANGLE	
THIRD ANGLE PROJECTION	
DO NOT SCALE DRAWING	REFER TO ES0018 FOR FASTENER TIGHTENING GUIDELINES
TITLE: BATTERY INSTL	
SHEET 1 OF 3	PART NO 187621 REV

FOR ELECTRICAL TORQUE SPECIFICATIONS SEE DWG NO. 128783-01-000

FOR ELECTRICAL CALLOUTS SEE DWG NO. 121339-01-000

\*187621 \*A

8 7 6 5 4 3 2 1

D

D

C

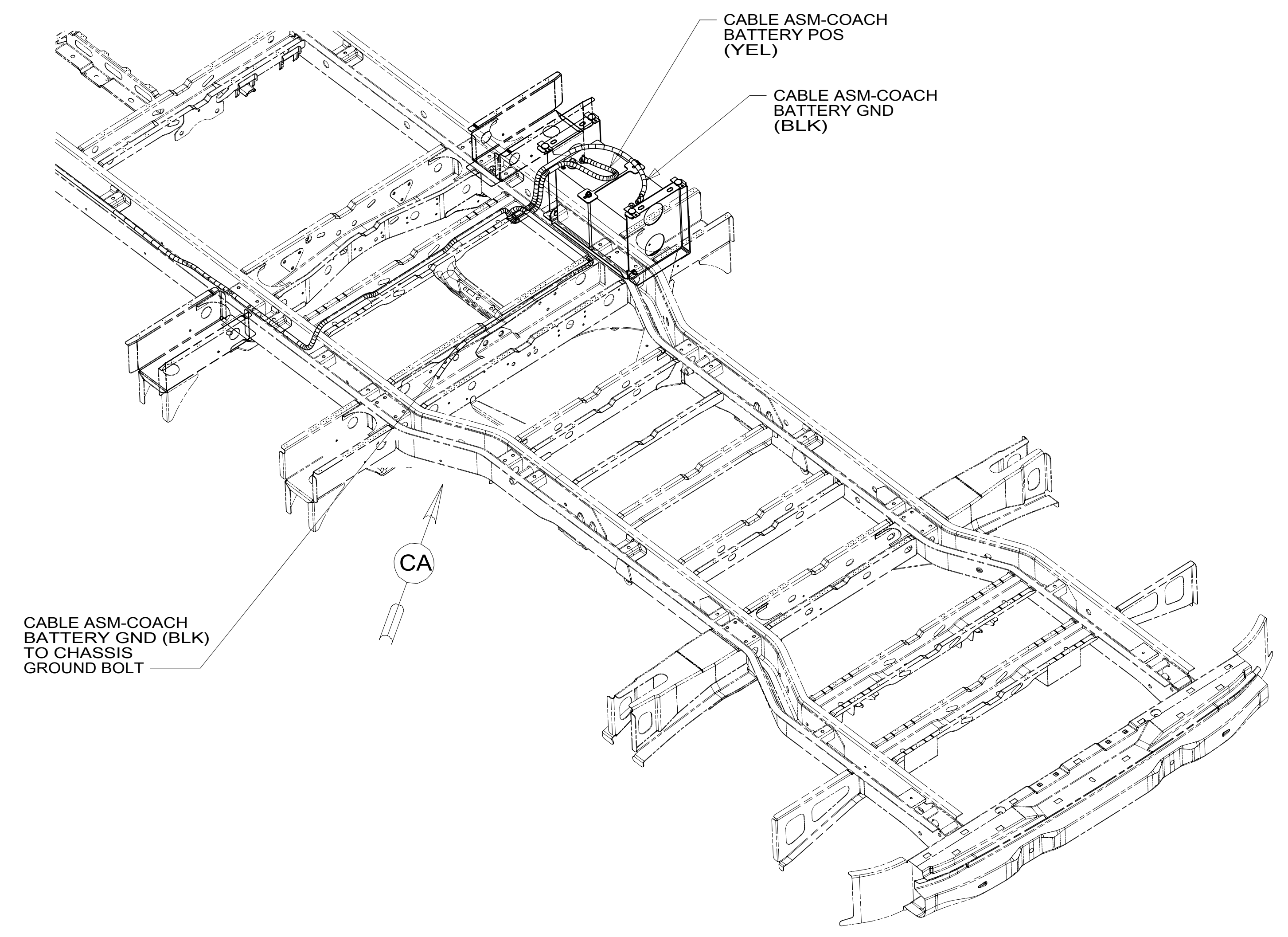
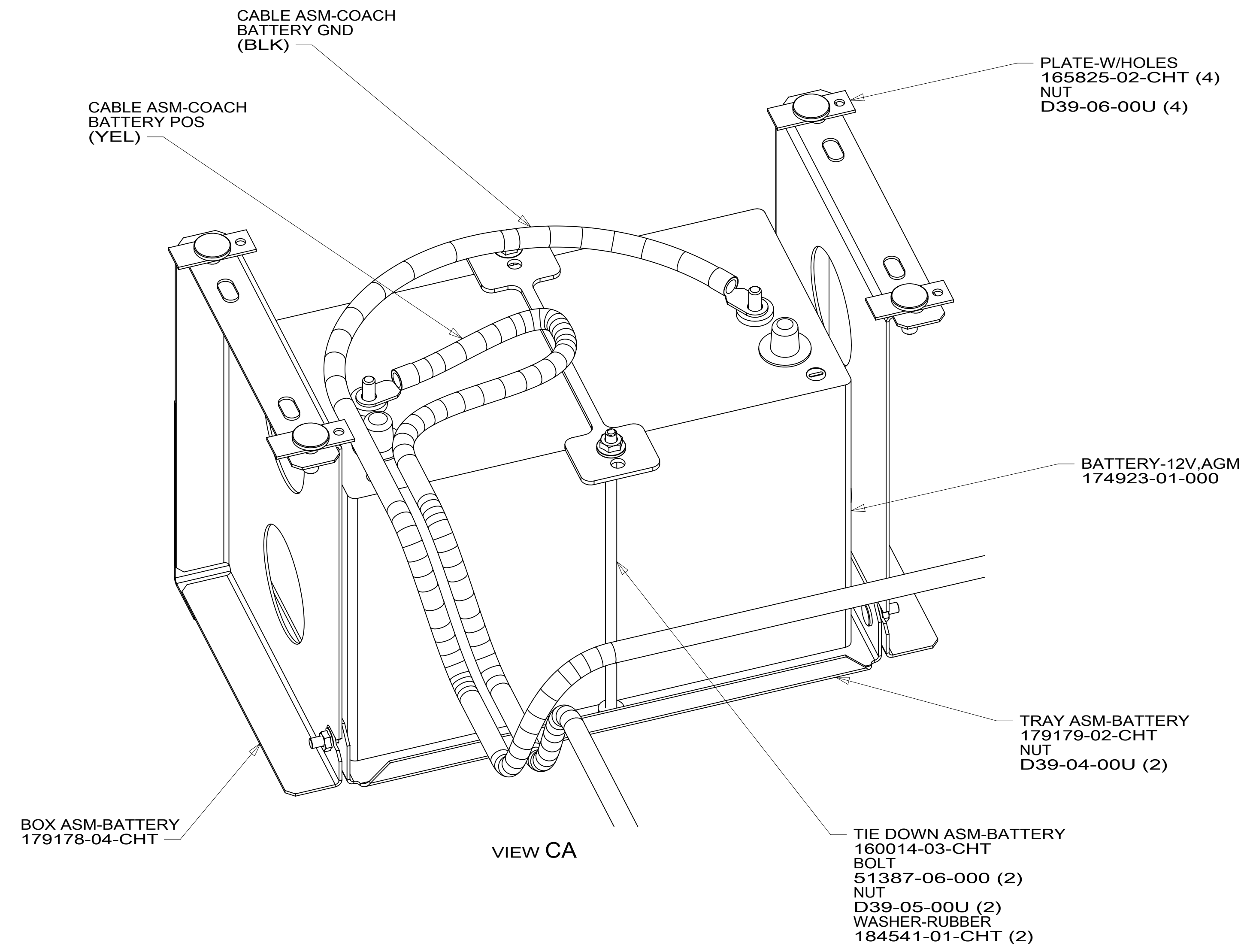
C

B

B

A

A



- 12X BATTERY-ONE
- 265 CODES/STANDARDS-CSA/CMVSS
- 1B1 CODES/STANDARDS USA

1B1 265 12X

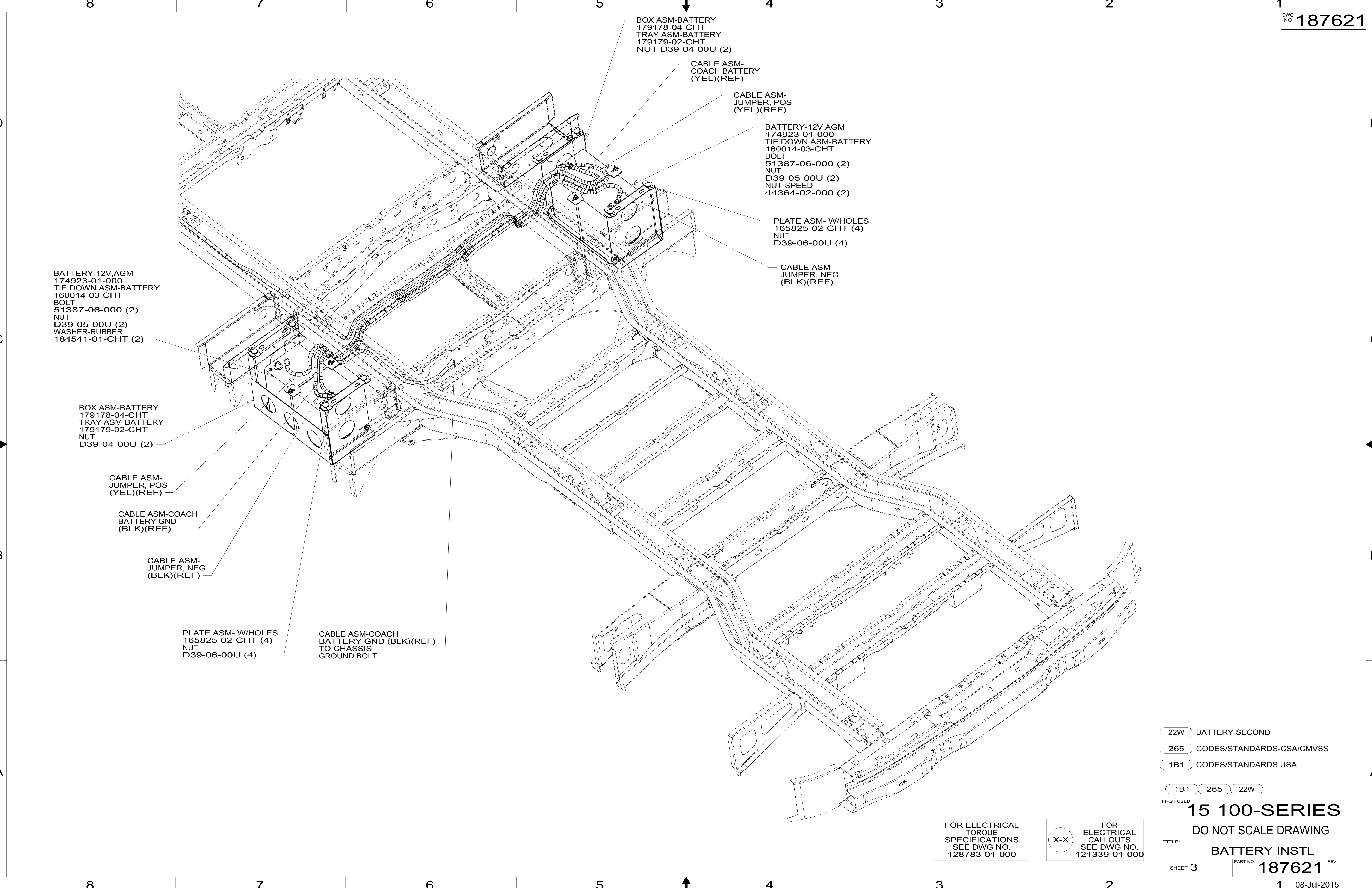
FIRST USED	
<b>15 100-SERIES</b>	
DO NOT SCALE DRAWING	
TITLE: <b>BATTERY INSTL</b>	
SHEET 2	PART NO <b>187621</b> REV
1 08-Jul-2015	

FOR ELECTRICAL TORQUE SPECIFICATIONS SEE DWG NO. 128783-01-000

X-X FOR ELECTRICAL CALLOUTS SEE DWG NO. 121339-01-000

\*187621\*

8 7 6 5 4 3 2 1



BATTERY-12V,AGM  
174923-01-000  
TIE DOWN ASM-BATTERY  
160014-03-CHT  
BOLT  
51387-06-000 (2)  
NUT  
D39-05-00U (2)  
WASHER-RUBBER  
184541-01-CHT (2)

BOX ASM-BATTERY  
179178-04-CHT  
TRAY ASM-BATTERY  
179179-02-CHT  
NUT  
D39-04-00U (2)

CABLE ASM-  
JUMPER, POS  
(YEL)(REF)

CABLE ASM-COACH  
BATTERY GND  
(BLK)(REF)

CABLE ASM-  
JUMPER, NEG  
(BLK)(REF)

PLATE ASM- W/HOLES  
165825-02-CHT (4)  
NUT  
D39-06-00U (4)

CABLE ASM-COACH  
BATTERY GND (BLK)(REF)  
TO CHASSIS  
GROUND BOLT

BOX ASM-BATTERY  
179178-04-CHT  
TRAY ASM-BATTERY  
179179-02-CHT  
NUT D39-04-00U (2)

CABLE ASM-  
COACH BATTERY  
(YEL)(REF)

CABLE ASM-  
JUMPER, POS  
(YEL)(REF)

BATTERY-12V,AGM  
174923-01-000  
TIE DOWN ASM-BATTERY  
160014-03-CHT  
BOLT  
51387-06-000 (2)  
NUT  
D39-05-00U (2)  
NUT-SPEED  
44364-02-000 (2)

PLATE ASM- W/HOLES  
165825-02-CHT (4)  
NUT  
D39-06-00U (4)

CABLE ASM-  
JUMPER, NEG  
(BLK)(REF)

- 22W BATTERY-SECOND
- 265 CODES/STANDARDS-CSA/CMVSS
- 1B1 CODES/STANDARDS USA

1B1 265 22W

### FIRST USED 15 100-SERIES

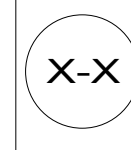
DO NOT SCALE DRAWING

TITLE: BATTERY INSTL

SHEET 3 PART NO 187621 REV

FOR ELECTRICAL  
TORQUE  
SPECIFICATIONS  
SEE DWG NO.  
128783-01-000

FOR  
ELECTRICAL  
CALLOUTS  
SEE DWG NO.  
121339-01-000



\*187621\*