



DANGER

Danger of electrical shock, burns or death. Always remove all power sources before attempting any repair, service or diagnostic work. Power can be present from shore power, generator, inverter or battery. All power sources must be disabled and secured before performing any service.



CAUTION

If you lack the skills, tools or equipment to perform diagnostic or repair work leave such work to an authorized Winnebago Industries dealer or other qualified shop.

8

7

6

5

4

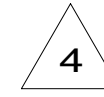
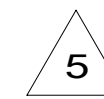
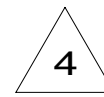
3

2

1

RELEASE	REV/DATE	DWG NO	187620
REV ZONE	REVISION RECORD	DATE	DFT-ORIG

		170C	
RED	1B1	136135-07-040	
	265	136136-07-040	
YEL	1B1	136131-05-025	
	265	136134-05-025	
BLK	1B1	136131-06-090	
	265	136134-06-090	
BLU	1B1	136131-02-215	
	265	136134-02-215	
WHT	1B1	136135-09-045	
	265	136136-09-045	
YEL-2	1B1	136131-13-027	
	265	136134-13-027	
MAIN	1B1	136137-01-018	
	265	136138-01-018	
GROUND MAIN		136145-05-066	4
MAIN EXTENSION	1B1	136137-01-026	
	265	136138-01-026	
CORD-POWER ASM		183140-01-000	5
GROUND ATS		136145-05-066	4



265 CODES/STANDARDS-CSA/CMVSS

1B1 CODES/STANDARDS USA

1B1 265



COPYRIGHT 2014 WINNEBAGO INDUSTRIES, INC.

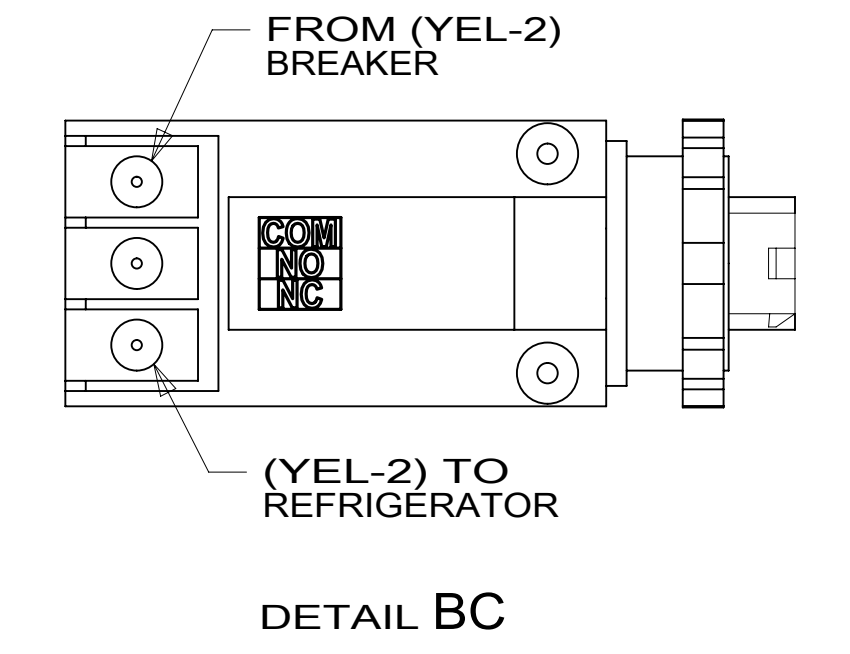
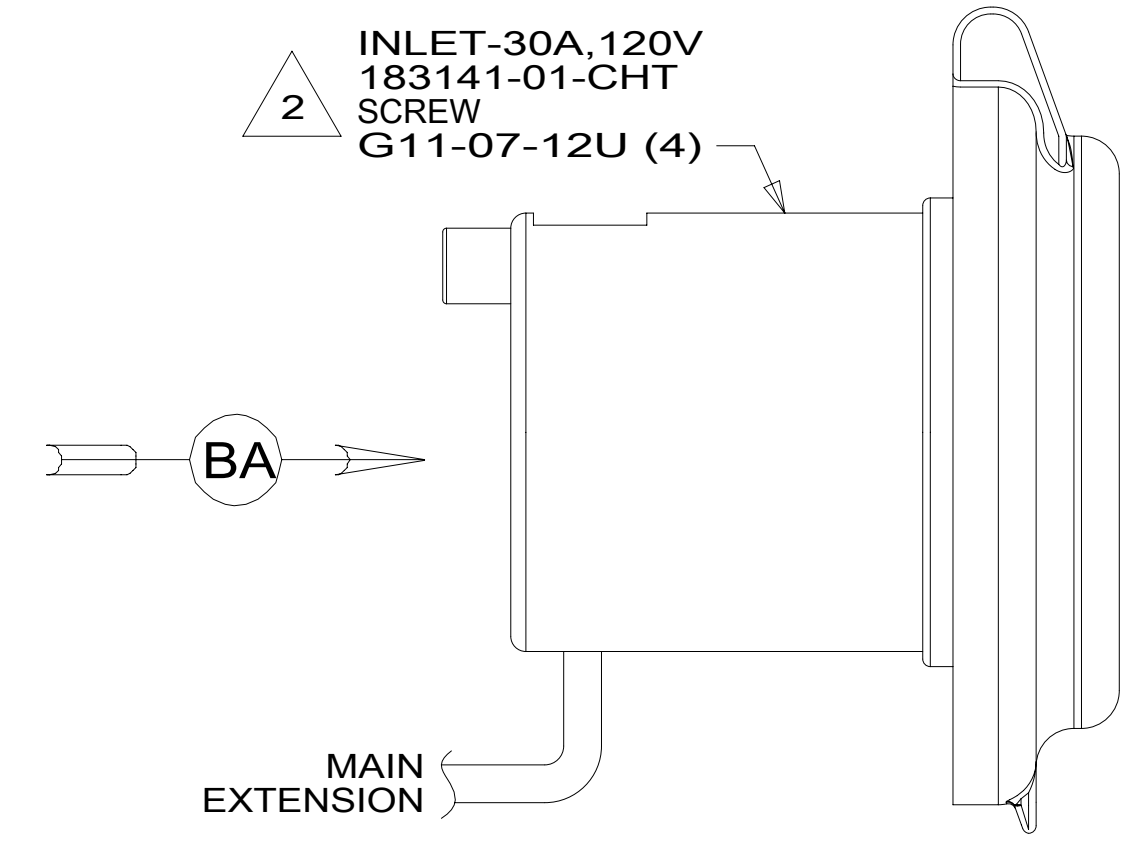
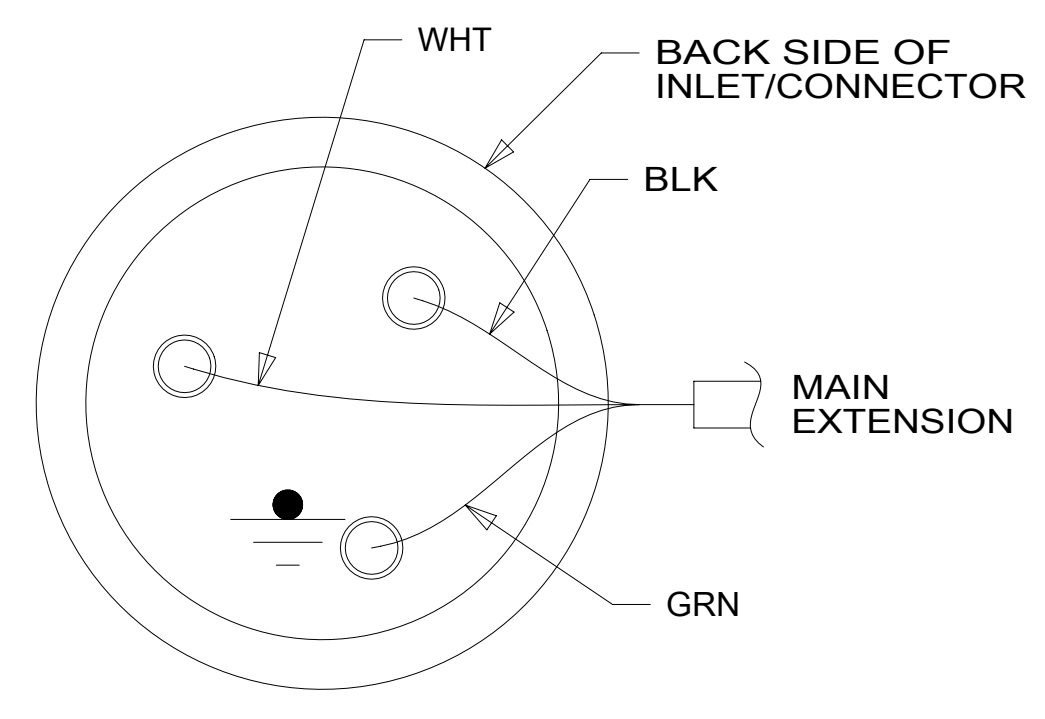
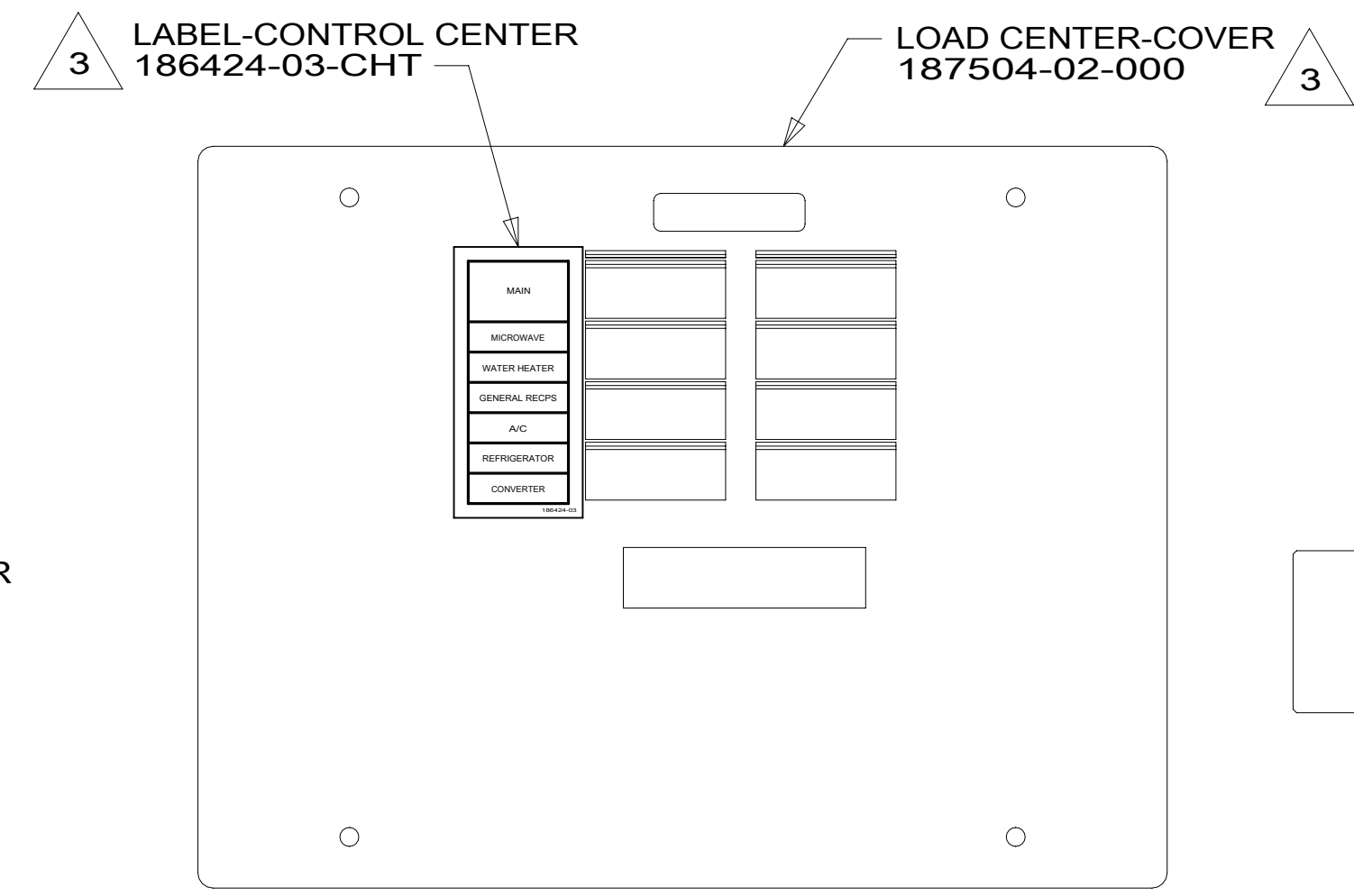
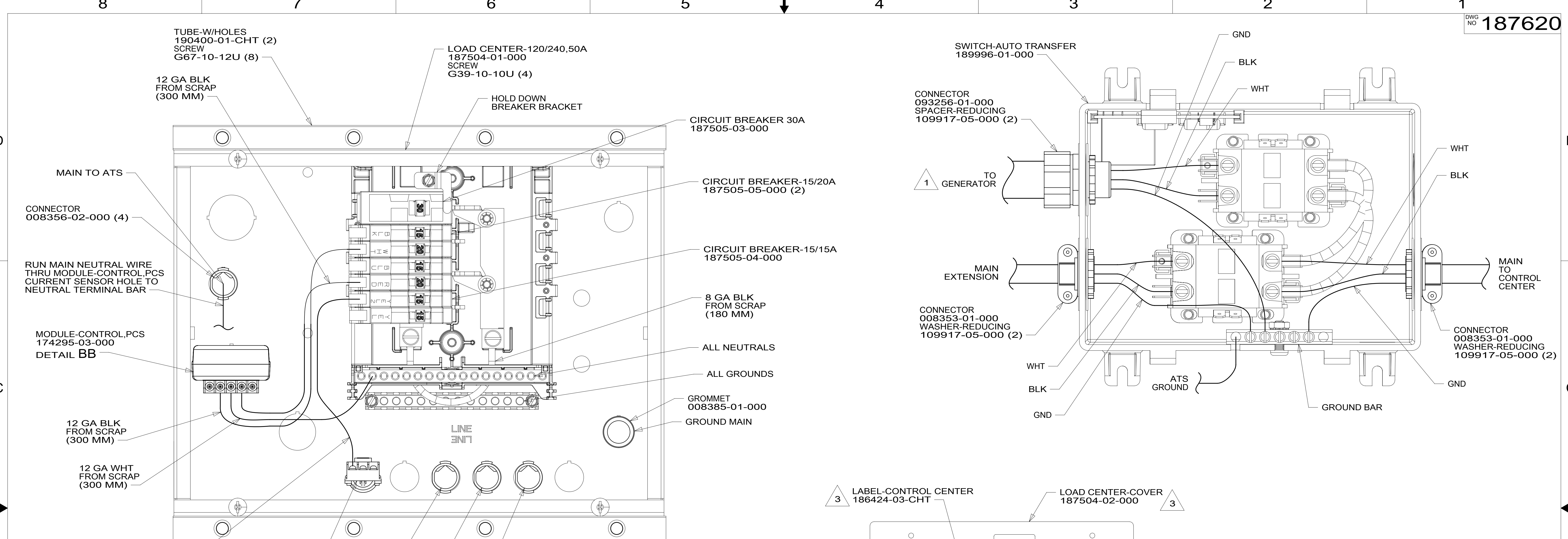
DFT-ORIG	ORIG. DATE
CHKR	ALL DIMENSIONS ARE IN MILLIMETERS
P.E.	
M.E.	
DSNR	FIRST USED
15 170C	
UNSPECIFIED TOLERANCES ARE:	
WHOLE DIM (X)	: 3
ONE-PLACE (X.X)	: 1.5
TWO-PLACE (X.XX)	: 0.50
ANGLE	: 1°
THIRD ANGLE PROJECTION	
DO NOT SCALE DRAWING	REFER TO ES0018 FOR FASTENER TIGHTENING GUIDELINES
TITLE: LOAD CENTER/ATS ASM	
SHEET 1 OF 2	PART NO 187620 REV

- NOTES:
- 5 DO NOT HI-POT POWER CORD, LED INDICATOR LIGHT MAY FAIL.
 - 4 GROUND WIRES TO BE INSTALLED ON MFG LINE. SHIP GROUND WIRES LOOSE WITH LOAD CENTER.
 - 3. SEE WIRING INSTL-BODY, 12V FOR ADDITIONAL INFORMATION.
 - 2. SECURE WIRES TO BACKSIDE OF LOAD CENTER WITH WIRE TIE 116673-01-000.
 - 1. ALL GROUNDS WIRES TO BE COVERED WITH TUBING 8041-02-000.

FOR ELECTRICAL TORQUE SPECIFICATIONS SEE DWG NO. 128783-01-000

FOR ELECTRICAL CALLOUTS SEE DWG NO. 121339-01-000

187620



- NOTES:**
9. ALL 110V STRANDED WIRE WITHOUT TERMINALS TO BE STRIPPED 10 MM AND SOLDER DIPPED.
 8. ATTACH WIRES TO BACK SIDE OF LOAD CENTER. USE EXISTING HOLES AND TIE-WIRE 116673-014-000.
 7. REMOVE 400 MM FROM OUTER JACKET ON ALL WIRES ENTERING LOAD CENTER AND TRIM INDIVIDUAL CONDUCTORS AS REQUIRED TO MAKE INTERNAL CONNECTIONS.
 6. ALL WIRES TO BE CLAMPED WITHIN 200 MM OF ATS.
 5. GROUND WIRES ARE NOT SHOWN FOR CLARITY.
 4. ALL GROUNDS TO BE COVERED WITH TUBING 8041-02-000.
 3. INSTALLED BY ASSEMBLY LINE.
 2. DO NOT HI-POT INLET, LED INDICATOR LIGHT MAY FAIL.
 1. SEE GENERATOR INSTL FOR ADDITIONAL INFORMATION.

FOR ELECTRICAL TORQUE SPECIFICATIONS SEE DWG NO. 128783-01-000
 FOR ELECTRICAL CALLOUTS SEE DWG NO. 121339-01-000

265	CODES/STANDARDS-CSA/CMVSS
1B1	CODES/STANDARDS USA
1B1	265
FIRST USED	
15 170C	
DO NOT SCALE DRAWING	
TITLE: LOAD CENTER/ATS ASM	
SHEET 2	PART NO 187620 REV
1 11-Aug-2015	

187620