



**DANGER**

**Danger of electrical shock, burns or death.** Always remove all power sources before attempting any repair, service or diagnostic work. Power can be present from shore power, generator, inverter or battery. All power sources must be disabled and secured before performing any service.



**CAUTION**

If you lack the skills, tools or equipment to perform diagnostic or repair work leave such work to an authorized Winnebago Industries dealer or other qualified shop.

DRAWING NO.	MODEL
187618-01	R42QD,R42QL,R42GD
187618-02	R42HD,R42HL

RELEASE	REV/DATE	DWG NO	187618
REV ZONE	REVISION RECORD	DATE	DTR-ORIG

	R-SERIES	ITEM
CABLE ASM (YEL) FROM COACH BATTERY FUSE TO STUD-JUMP START,RED	175207-52-076	1
CABLE ASM (YEL) FROM STUD-JUMP START,RED TO COACH SIDE OF AUX START SOLENOID	175207-52-004	2
CABLE ASM (ORG) FROM COACH BATTERY TO INVERTER FUSE	175207-66-005	3
CABLE ASM (BLK) FROM STUD-JUMP START,BLK TO FRAME RAIL GROUND	175211-01-006	4
CABLE ASM (ORG) FROM INVERTER FUSE TO INVERTER DISCONNECT	175207-67-024	5
CABLE ASM (ORG) FROM INVERTER DISCONNECT TO INVERTER	175207-65-004	17
CABLE ASM (BLK) FROM BATTERY TO INVERTER	175211-01-027	6
CABLE ASM (BLK) FROM COACH BATTERY TO FRAME RAIL GROUND	175211-02-081	7
CABLE ASM (PUR) FROM DISCONNECT SOLENOID TO ISOLATED STUD	175207-15-004	8
CABLE ASM (RED) FROM BATTERY SIDE OF DISCONNECT SOLENOID TO CHASSIS BATTERY FUSE	175207-35-007	9
CABLE ASM (BLU) FROM CHASSIS DISCONNECTED POWER FUSE TO LEVELING SYSTEM POWER	141416-26-115	10
CABLE ASM (BLK) FROM LEVELING SYSTEM TO FRAME RAIL GROUND	133567-11-004	1
CABLE ASM (GRN) FROM BAT DISC RELAY TO PASS THRU STUD	175207-42-138	11
CABLE ASM (GRN) FROM PASS THRU STUD TO GENERATOR	175207-42-031	2
CABLE ASM (BLK) FROM GENERATOR TO FRAME RAIL GROUND	175211-02-022	2
CABLE ASM (YEL) JUMPER BETWEEN POSITIVE POSTS ON COACH BATTERY	141417-52-004	12
	141417-51-002 (4)	13
CABLE ASM (BLK) JUMPER BETWEEN NEGATIVE POSTS ON COACH BATTERY	133568-12-004	14
	133568-11-002 (4)	15
CABLE ASM (RED) JUMPER BETWEEN POSITIVE POSTS IN LEFT FRONT COMPT	141417-32-002	3
CABLE ASM-TEMPERATURE,BATTERY	175385-03-000	16
CABLE ASM-COACH BATTERY FUSE (YEL)	175207-52-007	18
CABLE ASM-CHASSIS BATTERY FUSE (RED)	175207-35-005	19
CABLE ASM (FROM COACH DISCONNECT TO MULTIPLEX PANEL)	TAB 01: 189044-01-060 TAB 02: 189044-01-040	

- 265 CODES/STANDARDS-CSA/CMVSS
- 1B1 CODES/STANDARDS USA
- 1B1 265

**WINNEBAGO** COPYRIGHT 2014 WINNEBAGO INDUSTRIES, INC.

ALL DIMENSIONS ARE IN MILLIMETERS

**15 R-SERIES**

UNSPECIFIED TOLERANCES ARE:  
 WHOLE DIM (X) : 3  
 ONE-PLACE (X.X) : 1.5  
 TWO-PLACE (X.XX) : 0.50  
 ANGLE : 1°

THIRD ANGLE PROJECTION

DO NOT SCALE DRAWING REFER TO ES0018 FOR FASTENER TIGHTENING GUIDELINES

TITLE: **BATTERY INSTL**

SHEET 1 OF 4 PART NO **187618** REV

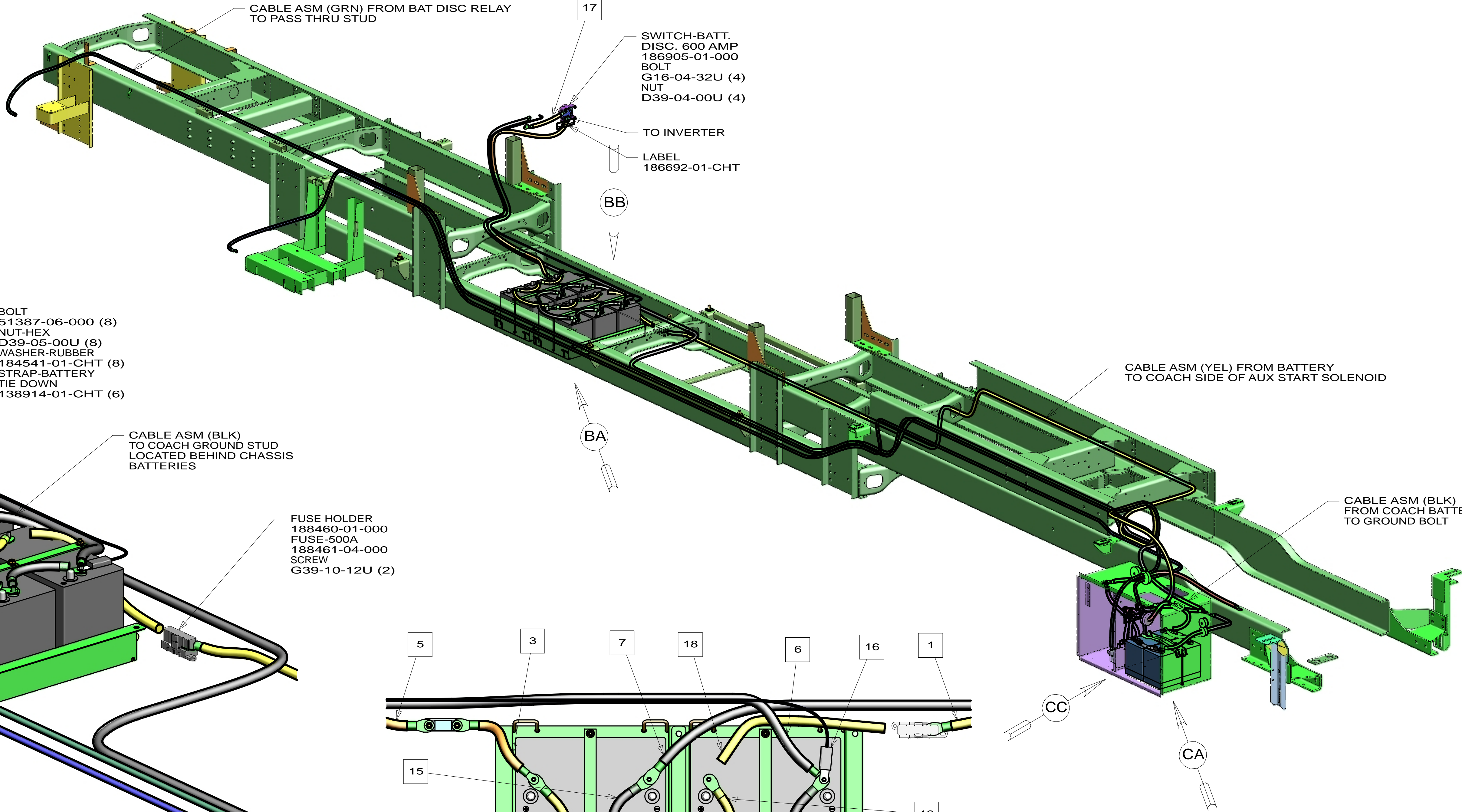
REF: 1 18-Aug-2014

- NOTES:
- 3 SEE WIRING INSTL-FRONT END FOR ADDITIONAL INFORMATION.
  - 2 SEE WIRING INSTL-CHASSIS FOR ADDITIONAL INFORMATION.
  - 1 SEE LEVELING SYSTEM INSTL FOR ADDITIONAL INFORMATION.

FOR ELECTRICAL TORQUE SPECIFICATIONS SEE DWG NO. 128783-01-000

FOR ELECTRICAL CALLOUTS SEE DWG NO. 121339-01-000

\* 187618 \*



HOLDER-FUSE  
115187-02-000  
FUSE-400 AMP  
115187-05-000  
SCREW  
G39-10-16B (2)

BATTERY-12V  
174923-01-000 (6)

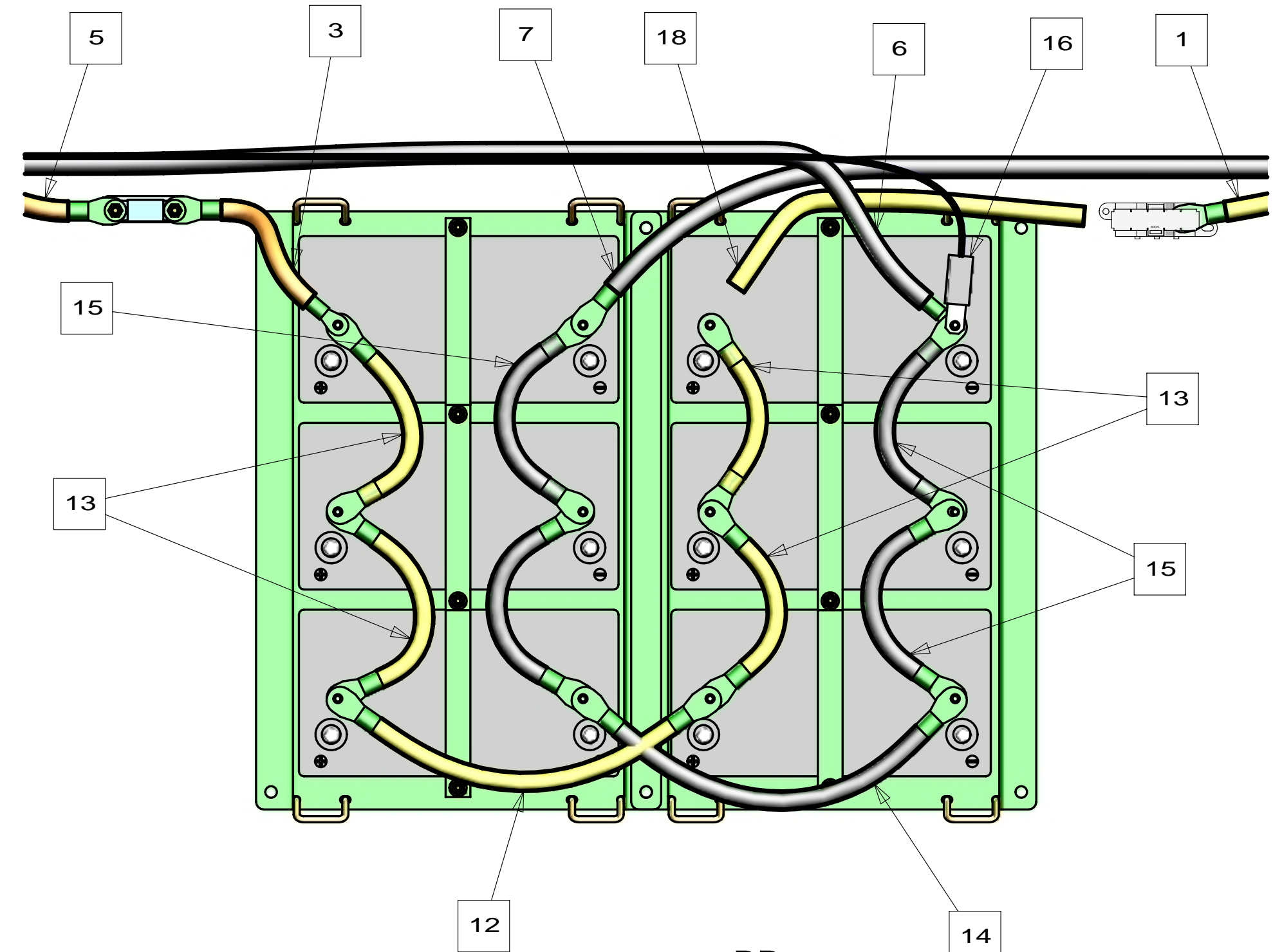
BOLT  
51387-06-000 (8)  
NUT-HEX  
D39-05-00U (8)  
WASHER-RUBBER  
184541-01-CHT (8)  
STRAP-BATTERY  
TIE DOWN  
138914-01-CHT (6)

CABLE ASM (BLK)  
TO COACH GROUND STUD  
LOCATED BEHIND CHASSIS  
BATTERIES

FUSE HOLDER  
188460-01-000  
FUSE-500A  
188461-04-000  
SCREW  
G39-10-12U (2)

TRAY ASM-BATTERY  
176166-01-CHT (2)  
NUT-HEX  
D39-06-00B (6)

VIEW BA



VIEW BB

FOR ELECTRICAL  
TORQUE  
SPECIFICATIONS  
SEE DWG NO.  
128783-01-000

FOR  
ELECTRICAL  
CALLOUTS  
SEE DWG NO.  
121339-01-000

265 CODES/STANDARDS-CSA/CMVSS

1B1 CODES/STANDARDS USA

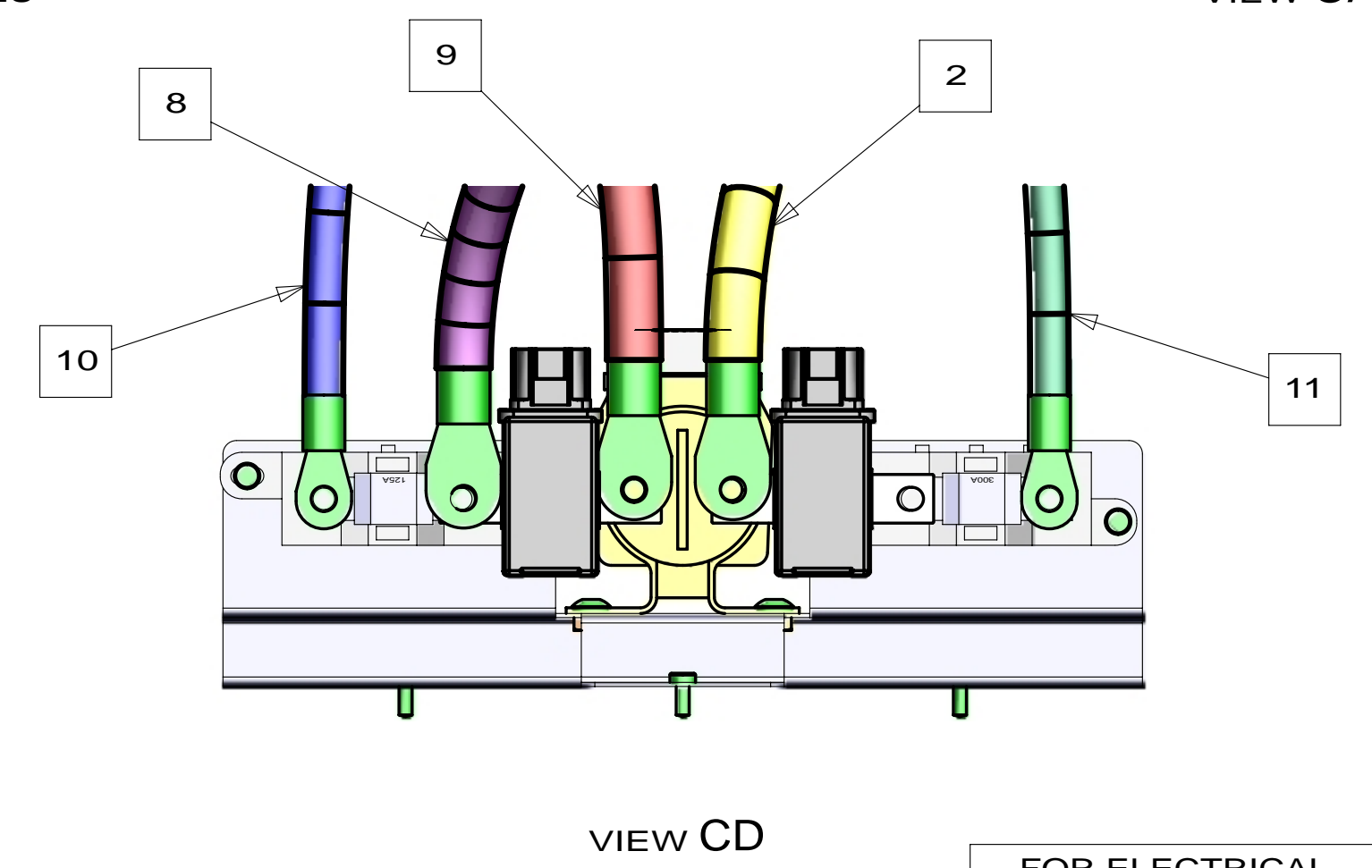
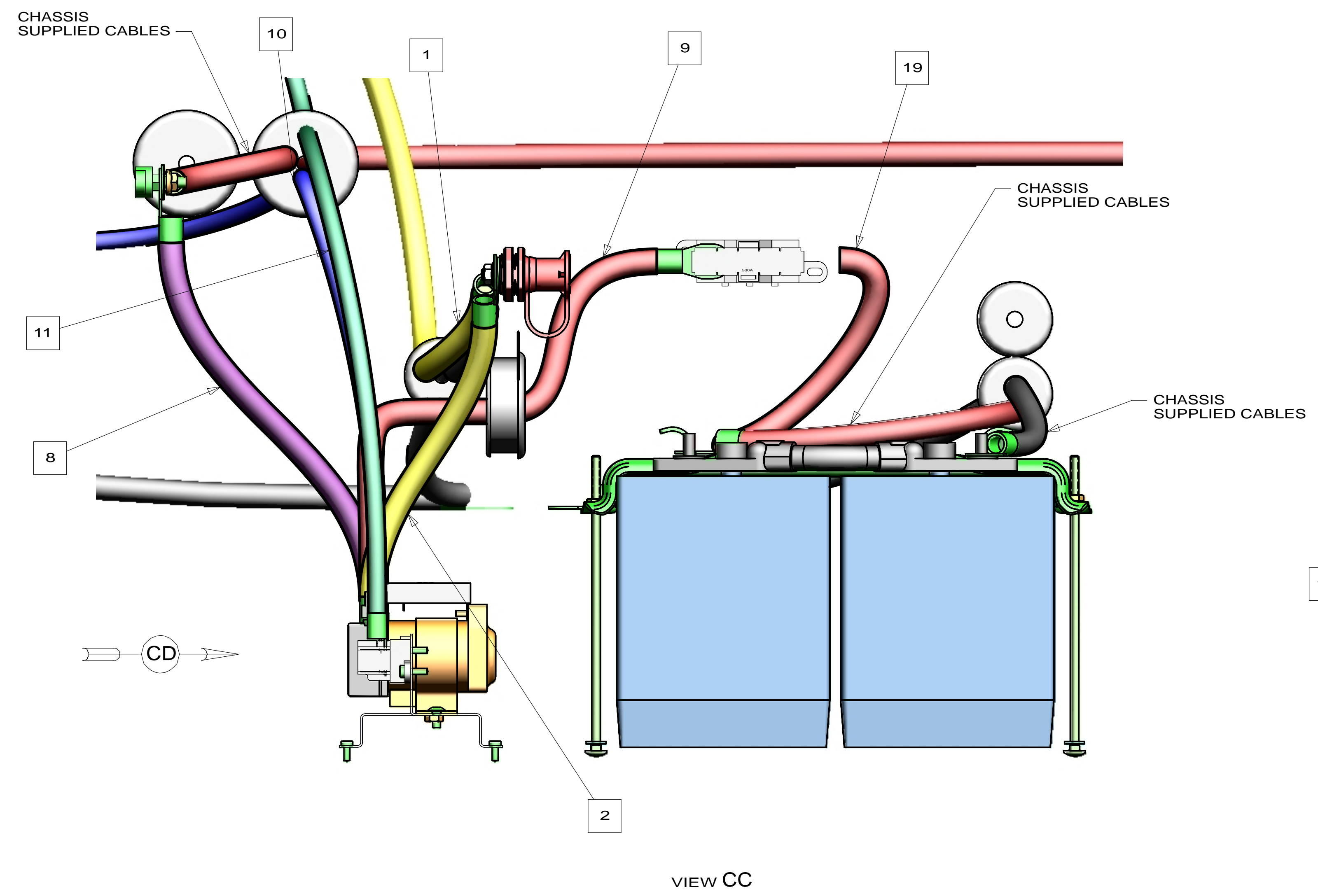
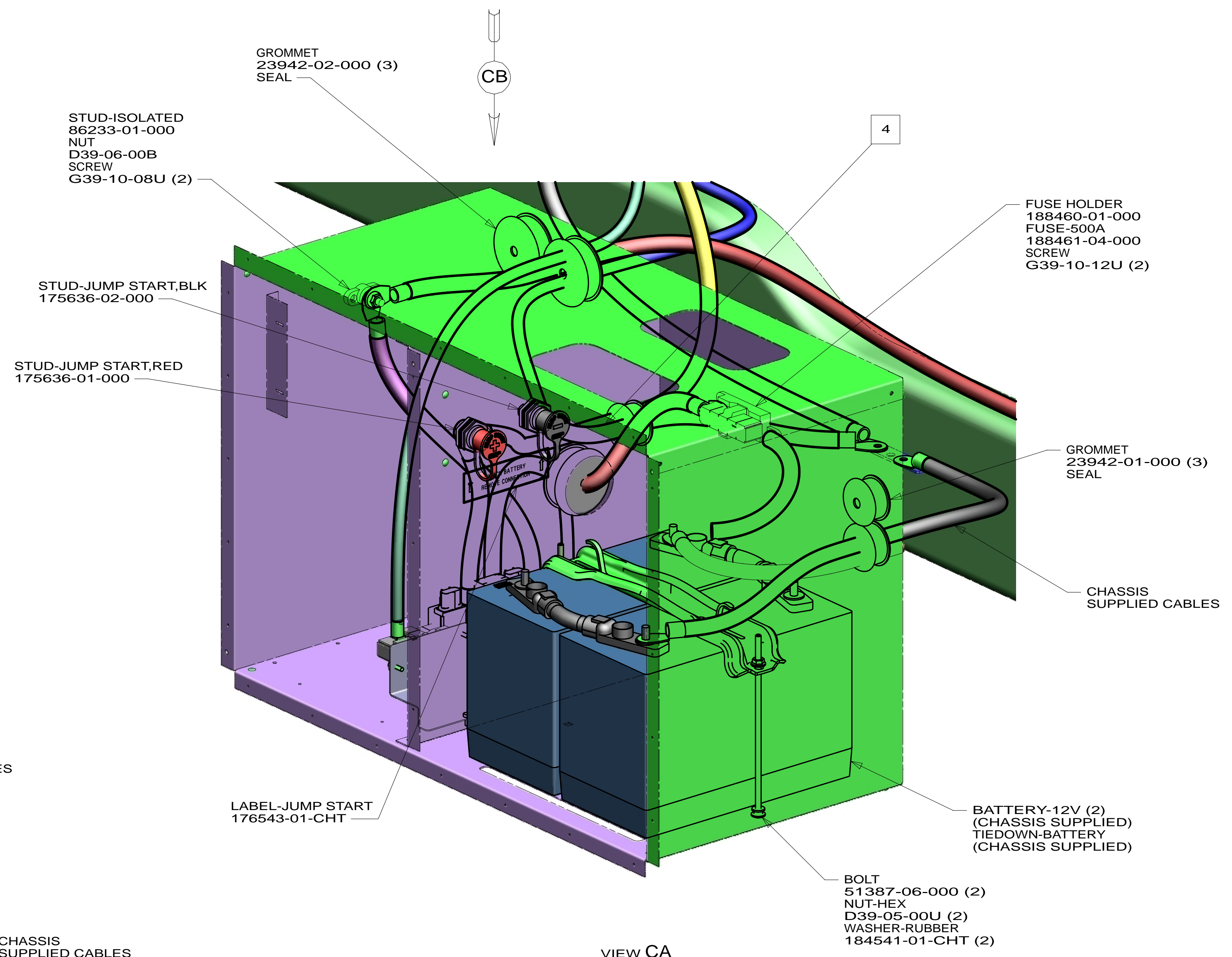
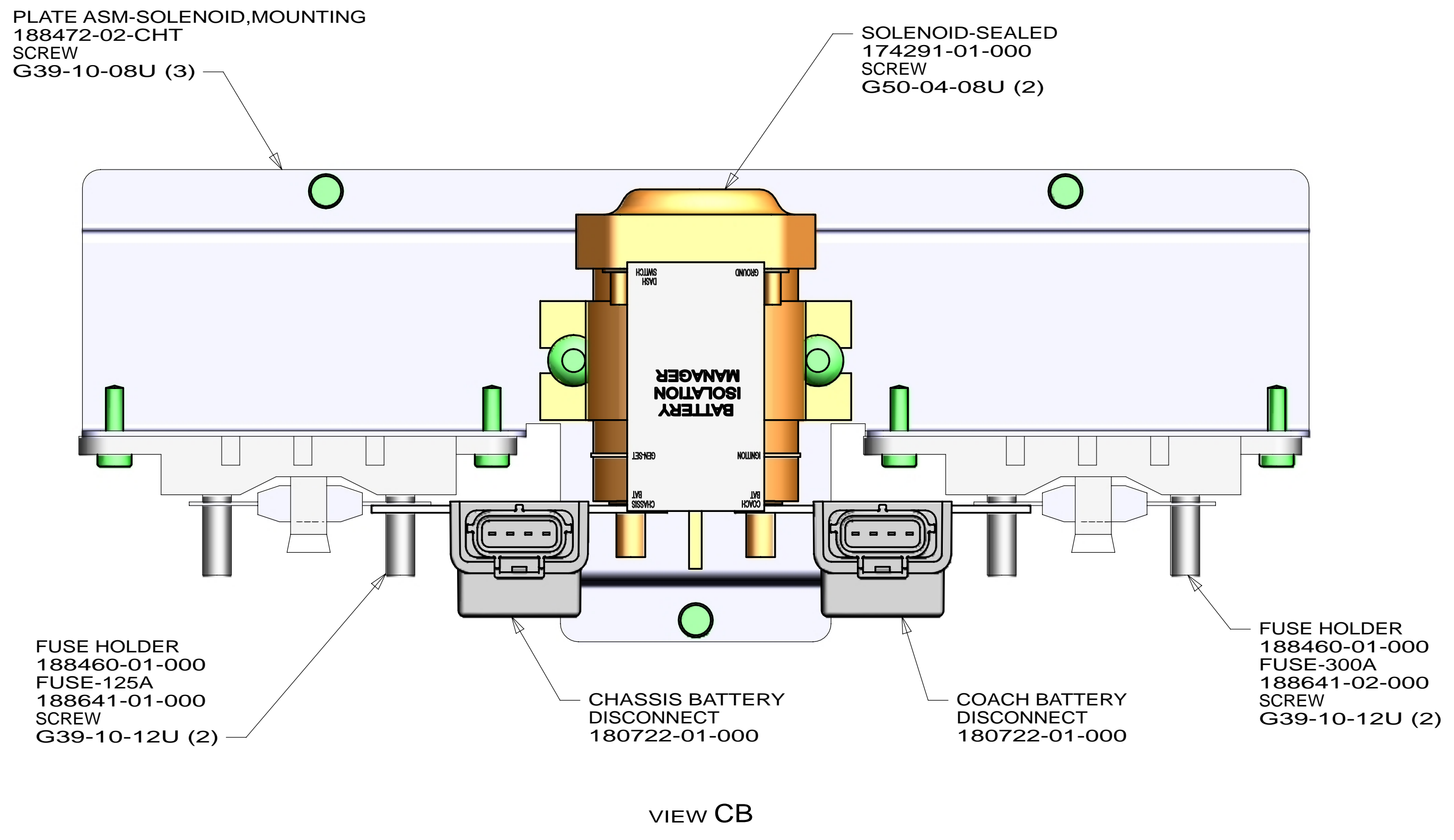
1B1 265

FIRST USED  
**15 R-SERIES**

DO NOT SCALE DRAWING

TITLE:  
**BATTERY INSTL**

SHEET 2 PART NO **187618** REV



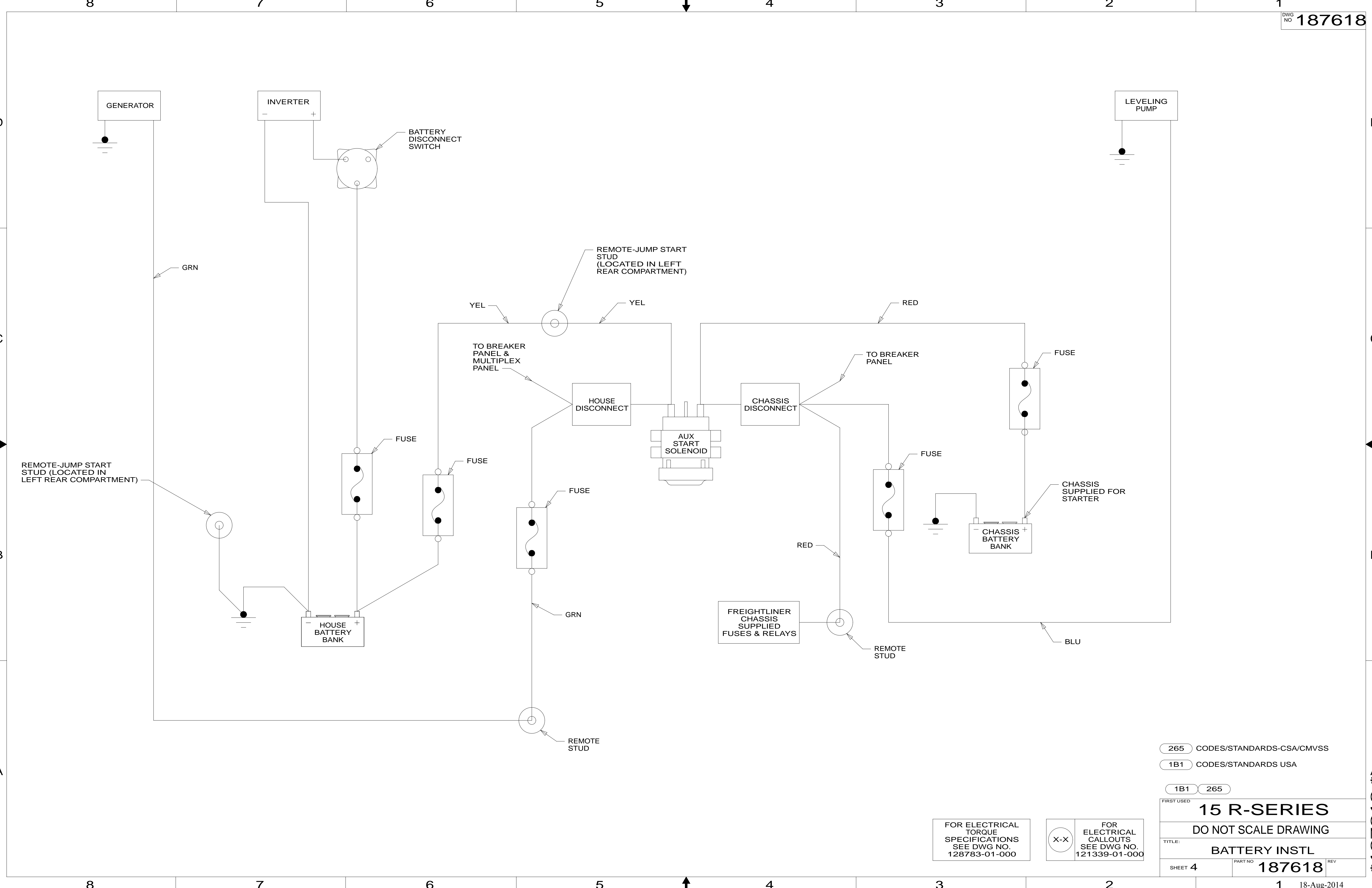
FOR ELECTRICAL TORQUE SPECIFICATIONS SEE DWG NO. 128783-01-000

FOR ELECTRICAL CALLOUTS SEE DWG NO. 121339-01-000

265 CODES/STANDARDS-CSA/CMVSS  
1B1 CODES/STANDARDS USA  
1B1 265

FIRST USED	
<b>15 R-SERIES</b>	
DO NOT SCALE DRAWING	
TITLE: <b>BATTERY INSTL</b>	
SHEET 3	PART NO <b>187618</b> REV

\* 187618



265 CODES/STANDARDS-CSA/CMVSS  
 1B1 CODES/STANDARDS USA

1B1 265

FIRST USED  
**15 R-SERIES**

DO NOT SCALE DRAWING

TITLE:  
**BATTERY INSTL**

SHEET 4 PART NO **187618** REV

FOR ELECTRICAL TORQUE SPECIFICATIONS SEE DWG NO. 128783-01-000

FOR ELECTRICAL CALLOUTS SEE DWG NO. 121339-01-000

\* 187618 \* A