



DANGER

Danger of electrical shock, burns or death. Always remove all power sources before attempting any repair, service or diagnostic work. Power can be present from shore power, generator, inverter or battery. All power sources must be disabled and secured before performing any service.

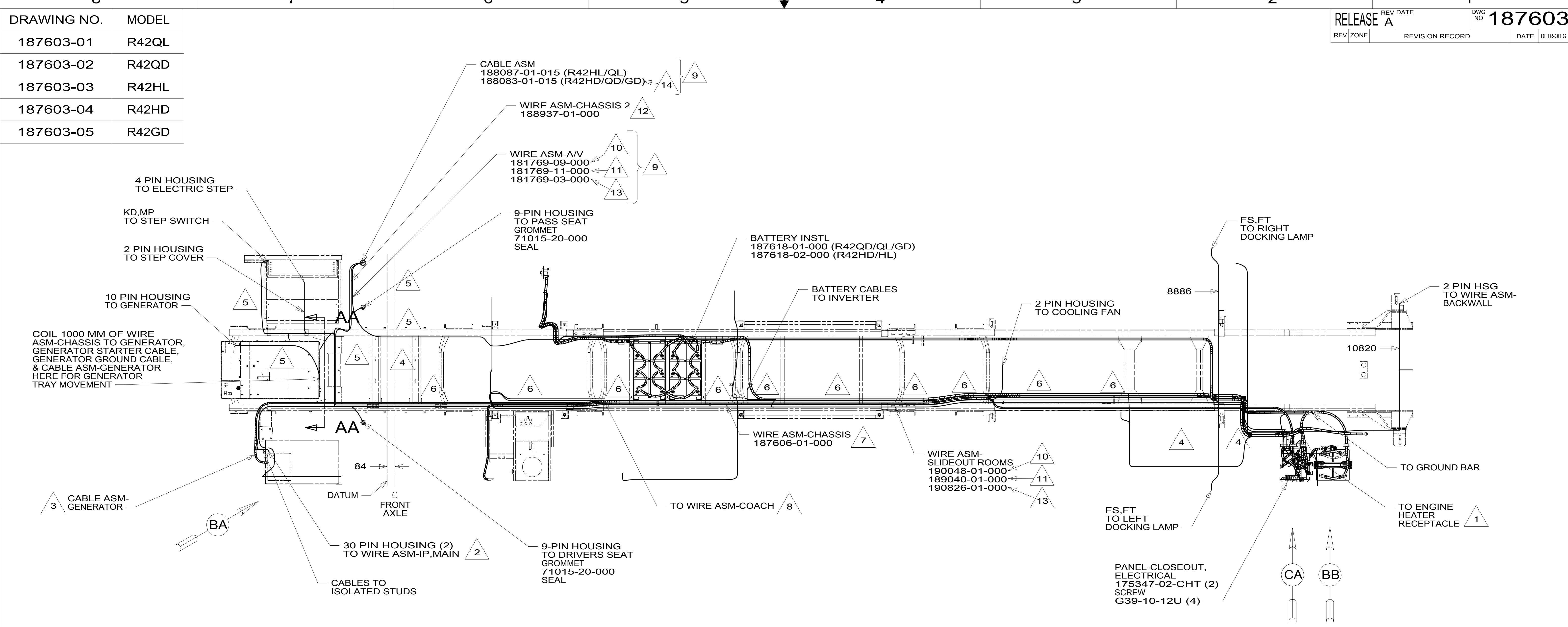


CAUTION

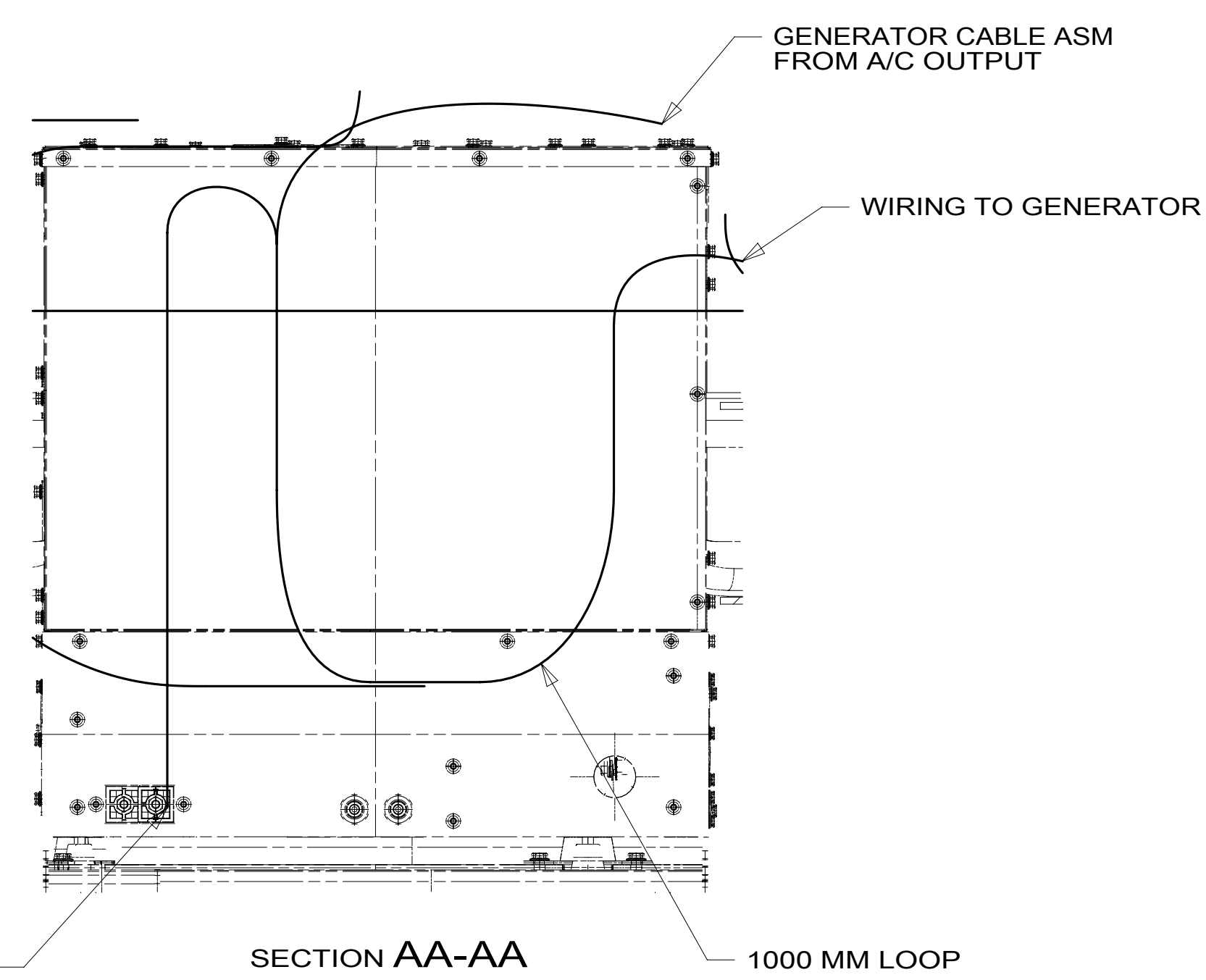
If you lack the skills, tools or equipment to perform diagnostic or repair work leave such work to an authorized Winnebago Industries dealer or other qualified shop.

DRAWING NO.	MODEL
187603-01	R42QL
187603-02	R42QD
187603-03	R42HL
187603-04	R42HD
187603-05	R42GD

RELEASE	REV/DATE	DWG NO	187603
REV ZONE	REVISION RECORD	DATE	DFT-ORIG



- NOTES:
- 14 ROUTE FEMALE END TO PASSENGER PANEL SWITCH, MALE END TO INPUT MODULE UNDER BED.
 - 13 USED ON R42GD ONLY.
 - 12 USED ON R42QD/HD/GD ONLY.
 - 11 USED ON R42HD/HL ONLY.
 - 10 USED ON R42QD/QL ONLY.
 - 9 COIL CABLE TO CENTER OF CHASSIS.
 - 8 SEE WIRE ASM-CHASSIS FOR ADDITIONAL INFORMATION.
 - 7 REST WIRE IN FRAME RAIL WHEN APPLICABLE.
 - 6 CLAMP 83610-01-000, SCREW G39-08-12B
 - 5 CLAMP 10497-03-000, SCREW G39-08-12B
 - 4 USE TIE-WIRE 8343-04-000 TO SECURE WIRES TO FLOOR SUPPORT FRAME AT LEAST ONCE EVERY 600MM.
 - 3 SEE BATTERY INSTL FOR ADDITIONAL INFORMATION.
 - 2 SEE WIRING INSTL-FRONT END FOR ADDITIONAL INFORMATION.
 - 1 SECURE CORD AWAY FROM ALL MOVING PARTS AND EXHAUST WITH WIRE-TIE 93147-01-000 AS REQUIRED.



FOR ELECTRICAL TORQUE SPECIFICATIONS SEE DWG NO. 128783-01-000

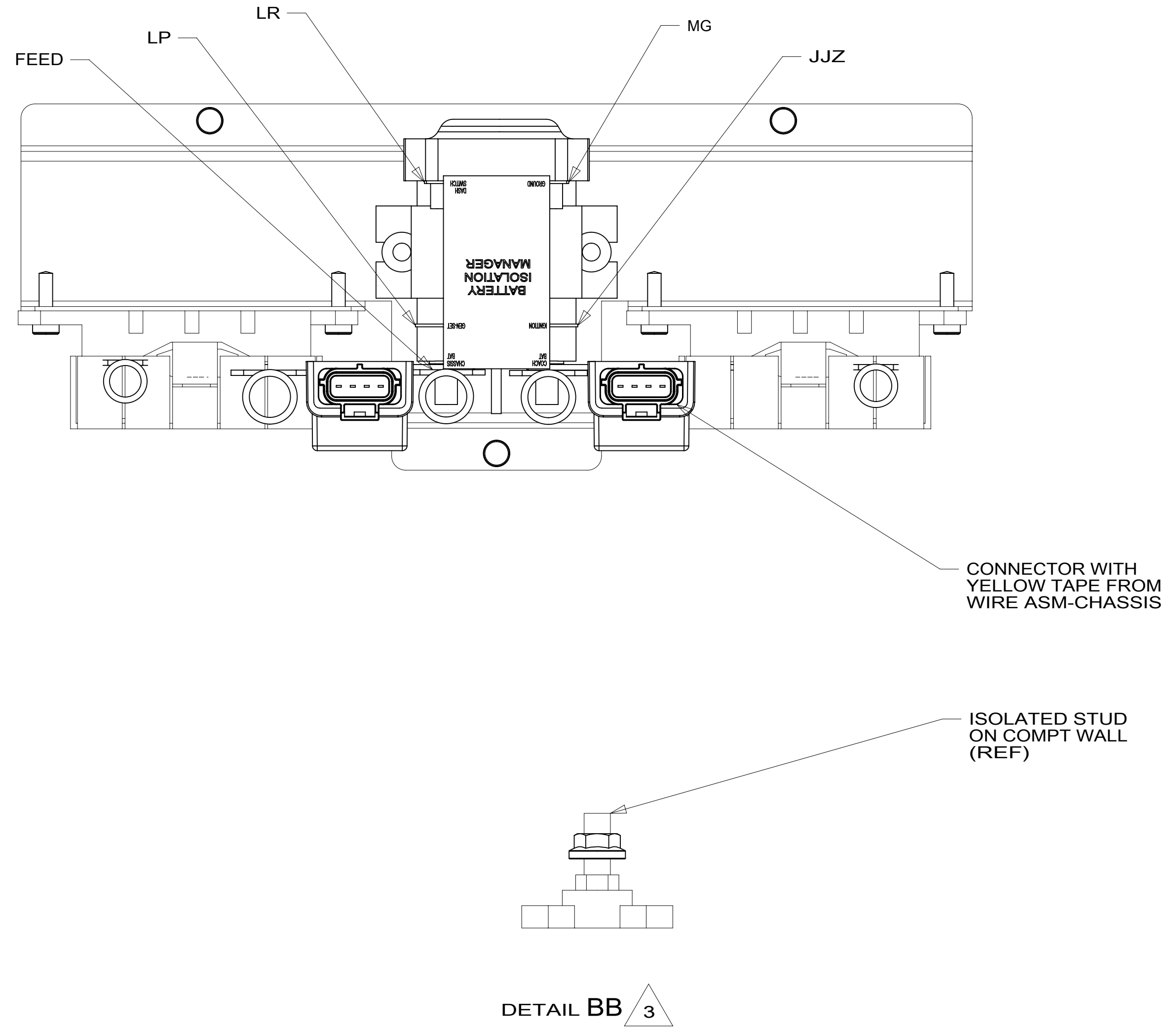
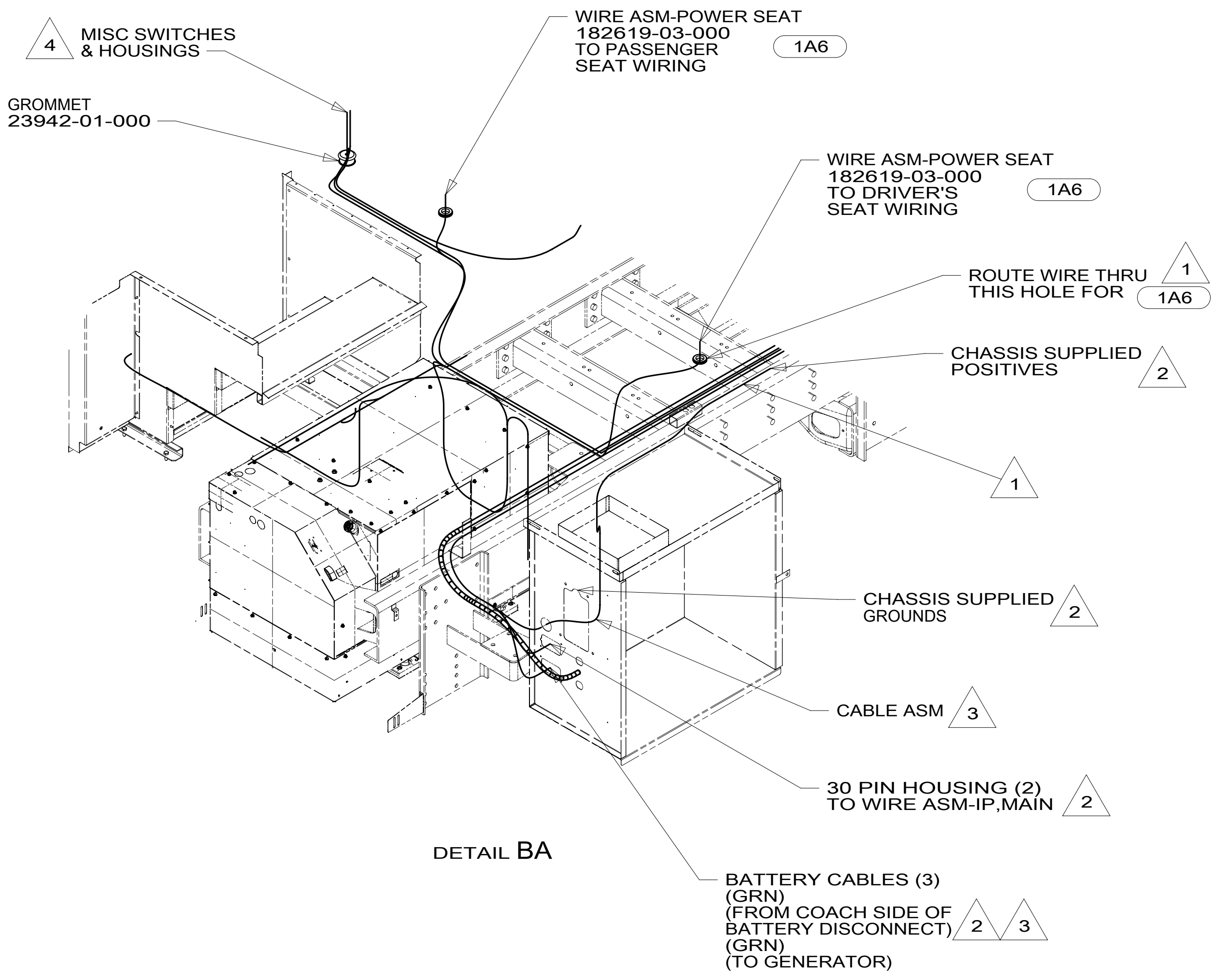
FOR ELECTRICAL CALLOUTS SEE DWG NO. 121339-01-000

- 265 CODES/STANDARDS-CSA/CMVSS
- 1B1 CODES/STANDARDS USA
- 1B1 265

WINNEBAGO COPYRIGHT 2014 WINNEBAGO INDUSTRIES, INC.

DFT-ORIG	ORIG. DATE
CHKR	ALL DIMENSIONS ARE IN MILLIMETERS
P.E.	FIRST USED
M.E.	15 R-SERIES
DSNR	MATERIAL:
UNSPECIFIED TOLERANCES ARE:	
WHOLE DIM (X)	: 3
ONE-PLACE (X.X)	: 1.5
TWO-PLACE (X.XX)	: 0.50
ANGLE	: 1°
THIRD ANGLE PROJECTION	
DO NOT SCALE DRAWING	REFER TO ES0018 FOR FASTENER TIGHTENING GUIDELINES
TITLE: WIRING INSTL-CHASSIS	
SHEET 1 OF 3	PART NO. 187603 REV
REF:	1 23-Jan-2015

187603



- NOTES:
- 4 SEE WIRE ASM-CHASSIS FOR ADDITIONAL INFORMATION.
 - 3 SEE BATTERY INSTL FOR ADDITIONAL INFORMATION.
 - 2 SEE WIRING INSTL-FRONT END FOR ADDITIONAL INFORMATION.
 - 1 USE PLUG-PLASTIC 61420-12-000 FOR UNUSED HOLE & SEAL.

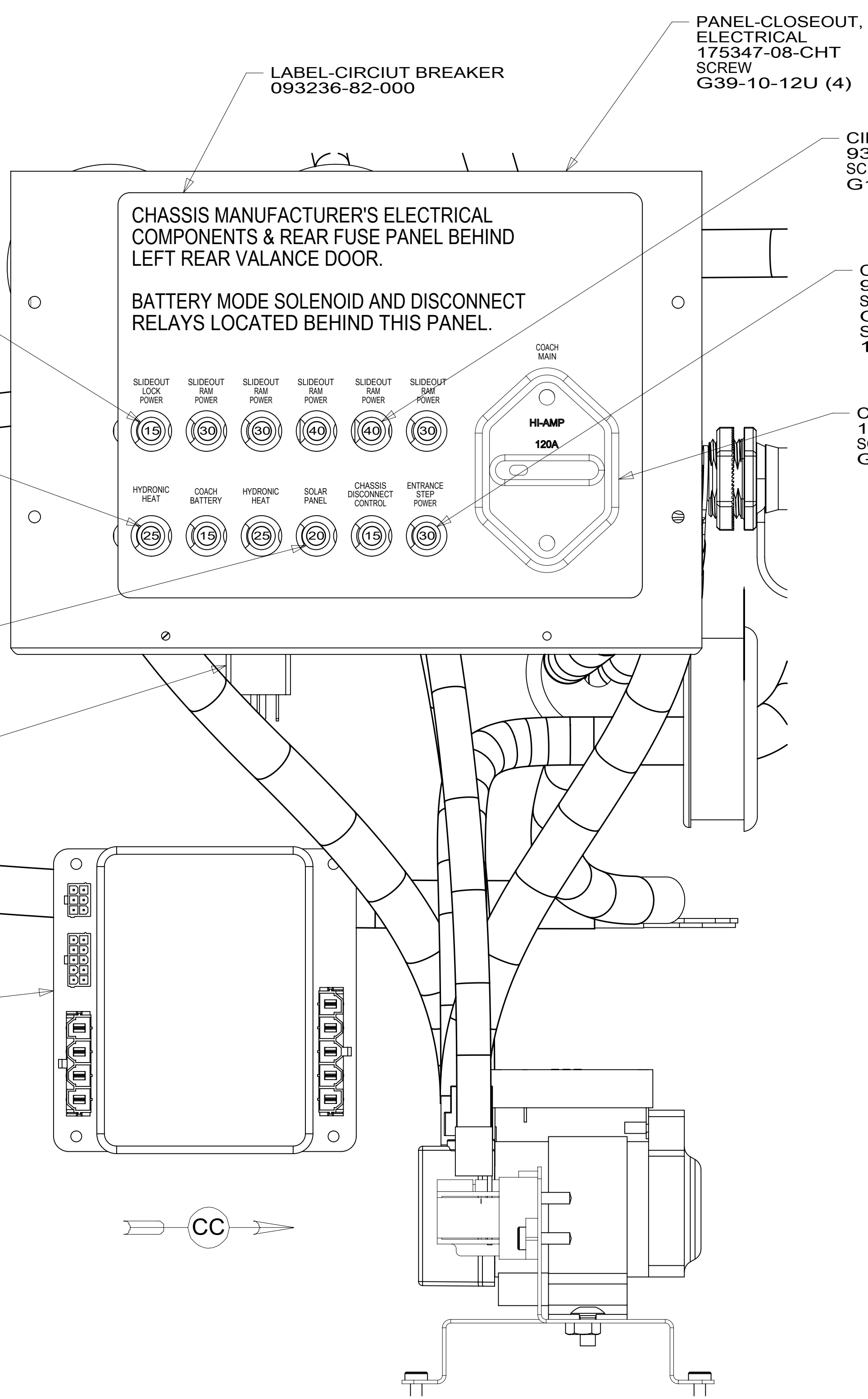
- 1A6 SEATS-DRIVER/PASSENGER
- 265 CODES/STANDARDS-CSA/CMVSS
- 1B1 CODES/STANDARDS USA

FIRST USED	
15 R-SERIES	
DO NOT SCALE DRAWING	
TITLE: WIRING INSTL-CHASSIS	
SHEET 2	PART NO 187603 REV
1 23-Jan-2015	

FOR ELECTRICAL TORQUE SPECIFICATIONS SEE DWG NO. 128783-01-000

FOR ELECTRICAL CALLOUTS SEE DWG NO. 121339-01-000

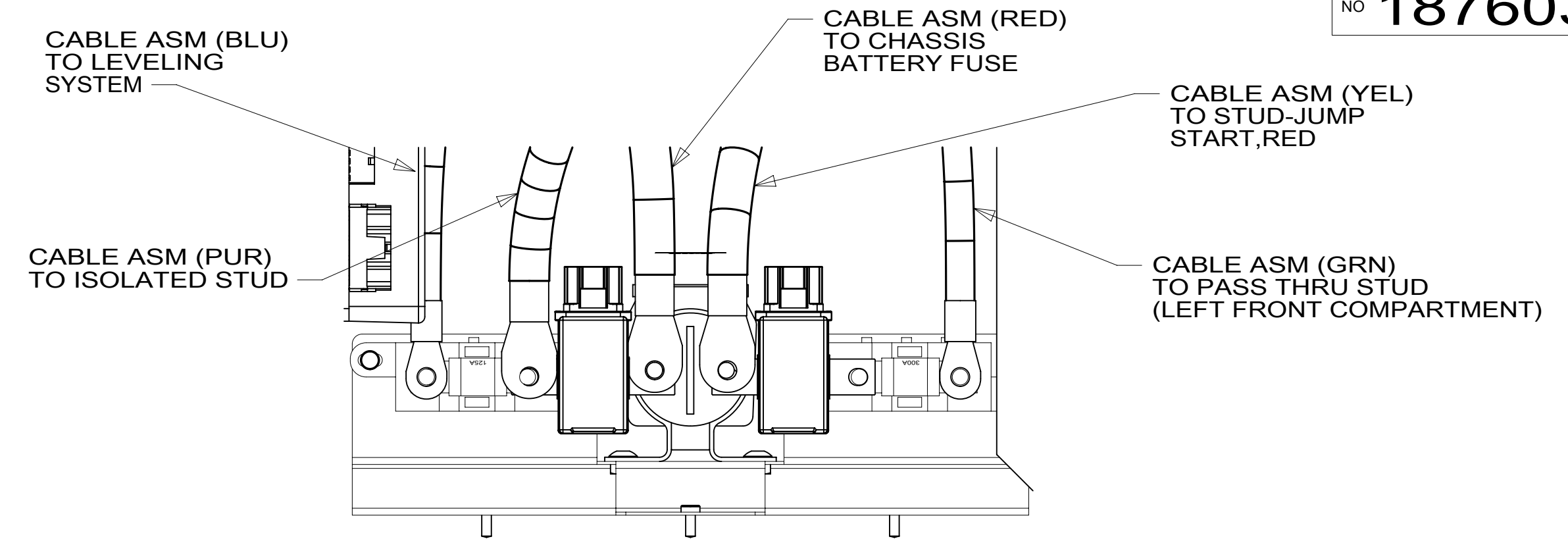
187603



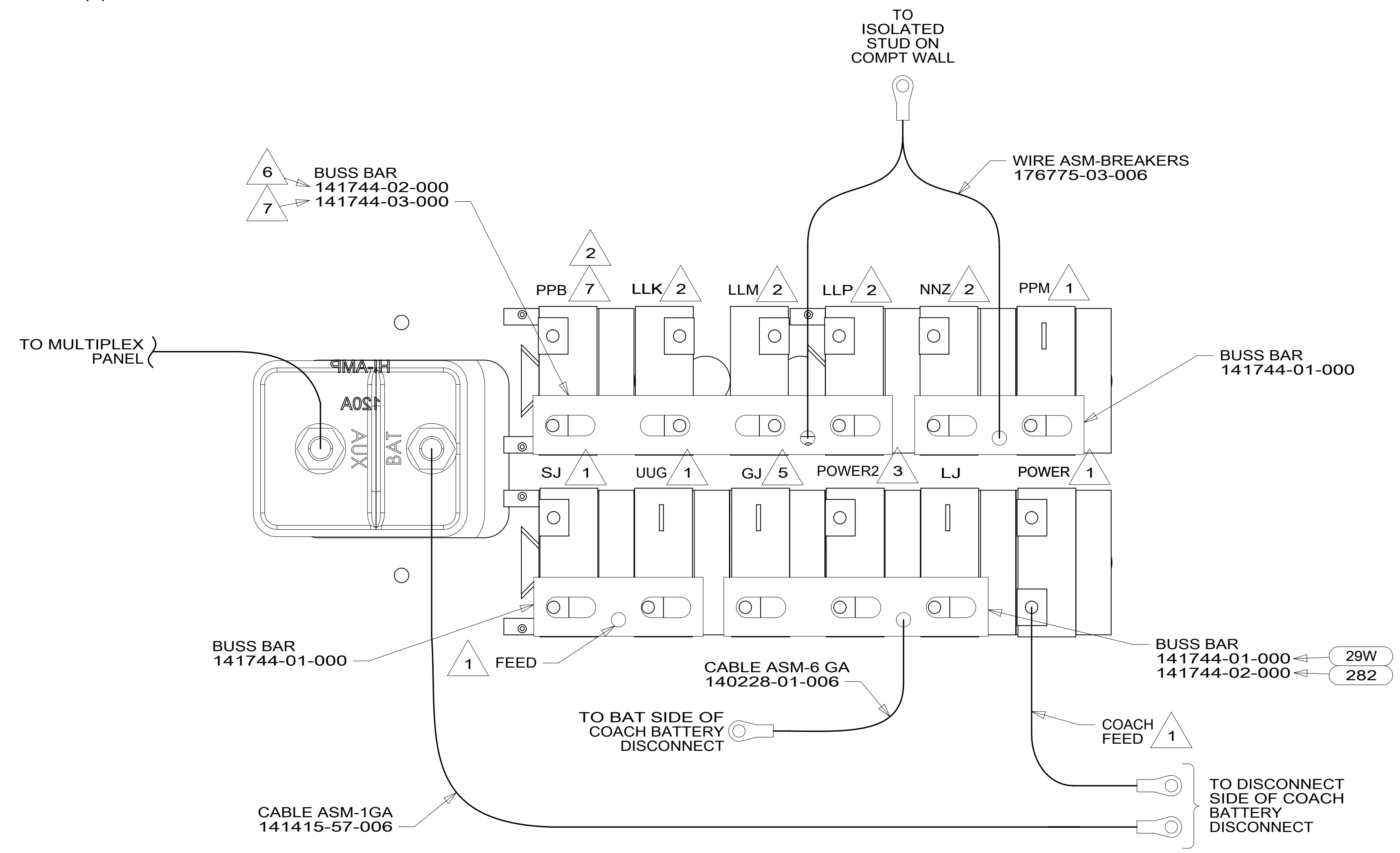
- 4 → CIRCUIT BREAKER-15 AMP
93654-02-000 (3)
SCREW
G52-06-05B (3)
SPACER-CIRCUIT BREAKER
141789-01-000 (3)
- CIRCUIT BREAKER-25 AMP
93655-01-000 (2)
SPACER-CIRCUIT BREAKER
141789-01-000 (2)
- 282 → CIRCUIT BREAKER-20 AMP
93654-03-000
SPACER-CIRCUIT BREAKER
141789-01-000
- RELAY
63912-02-000
SCREW
G39-08-08B
- MODULE-SLIDEOUT
171058-02-000
SCREW
G39-08-12U (4)

- NOTES:
- 7 → USED ON R42HD/HL ONLY.
 - 6 → USED ON R42QD/QL ONLY.
 - 5 → FROM WIRE ASM-CHASSIS. TIE BACK TO HARNESS WITH 29W
 - 4 → REPLACE EXISTING SCREW TO PROPERLY ATTACH BREAKER TO BUSS BAR.
 - 3 → FROM WIRE ASM-CHASSIS. MARKED WITH YELLOW TAPE.
 - 2 → FROM WIRE ASM-SLIDEOUT ROOMS.
 - 1 → FROM WIRE ASM-CHASSIS.

DETAIL CA



VIEW CC



DETAIL CB

- 29W → SOLAR PANEL/BATTERY CHRГ W/O
- 282 → SOLAR PANEL - 100 WATT
- 265 → CODES/STANDARDS-CSA/CMVSS
- 1B1 → CODES/STANDARDS USA

FOR ELECTRICAL TORQUE SPECIFICATIONS SEE DWG NO. 128783-01-000

X-X FOR ELECTRICAL CALLOUTS SEE DWG NO. 121339-01-000

FIRST USED	
15 R-SERIES	
DO NOT SCALE DRAWING	
TITLE: WIRING INSTL-CHASSIS	
SHEET 3	PART NO 187603 REV
1 23-Jan-2015	

187603