



**DANGER**

**Danger of electrical shock, burns or death.** Always remove all power sources before attempting any repair, service or diagnostic work. Power can be present from shore power, generator, inverter or battery. All power sources must be disabled and secured before performing any service.



**CAUTION**

If you lack the skills, tools or equipment to perform diagnostic or repair work leave such work to an authorized Winnebago Industries dealer or other qualified shop.

8

7

6

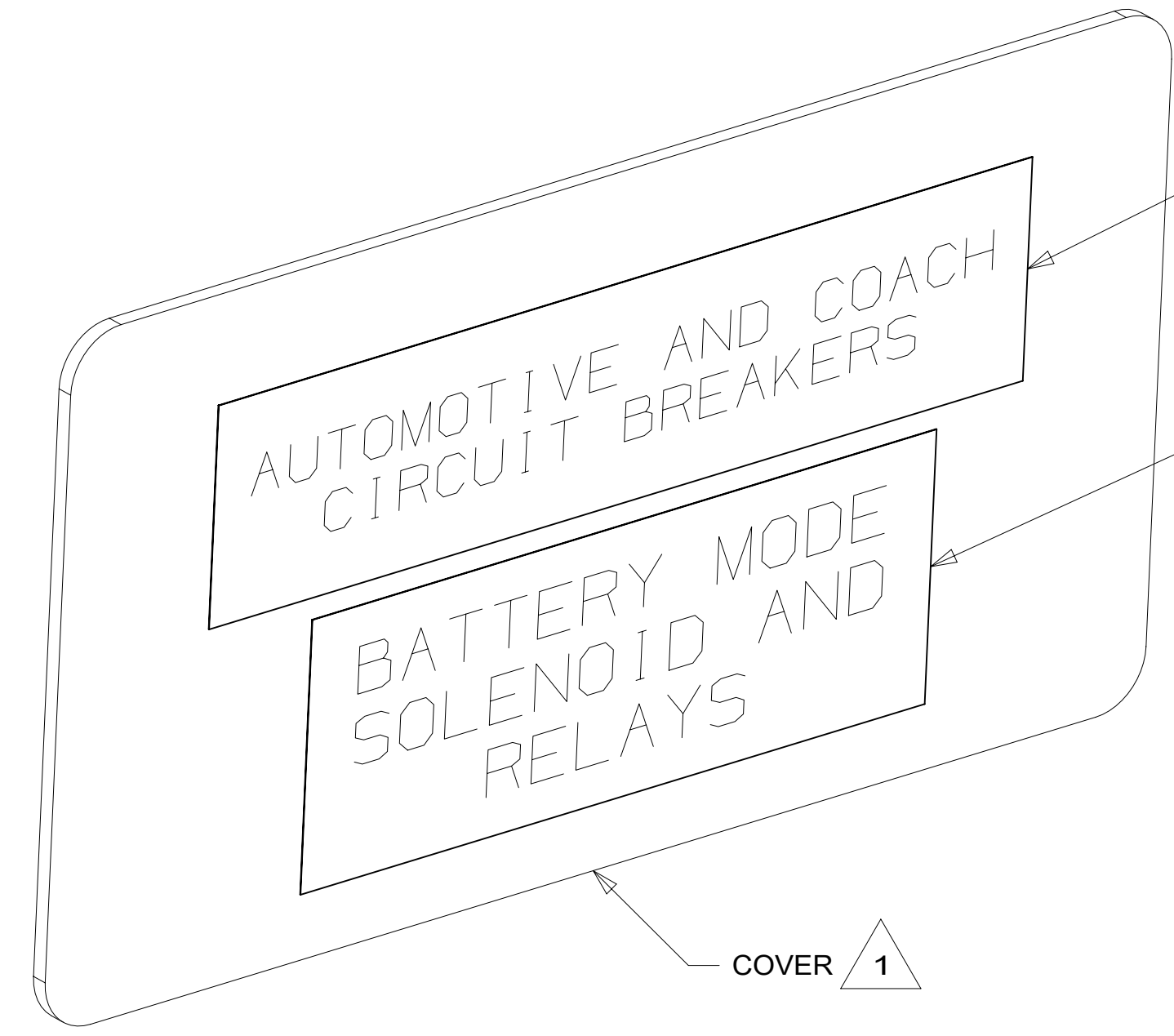
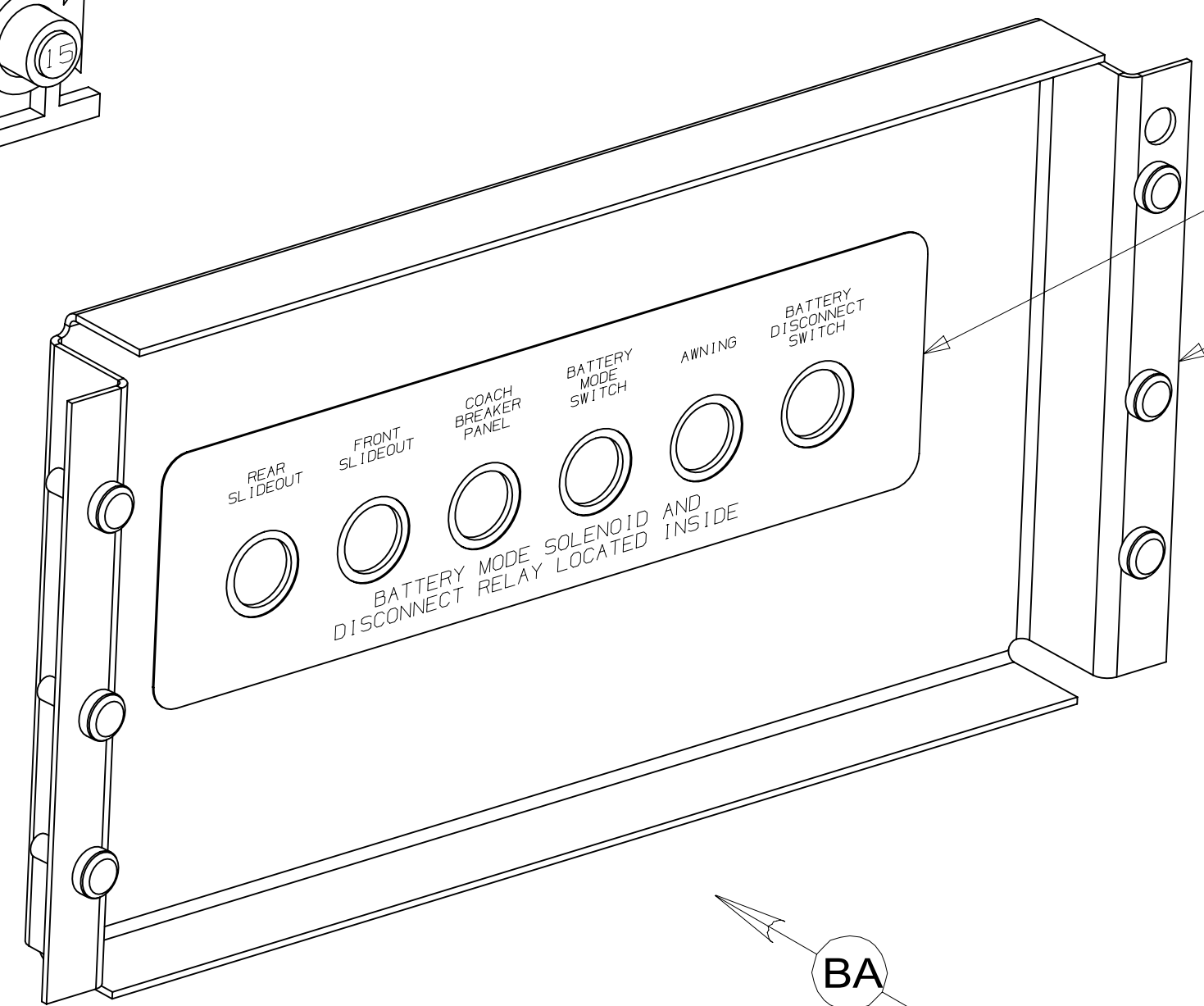
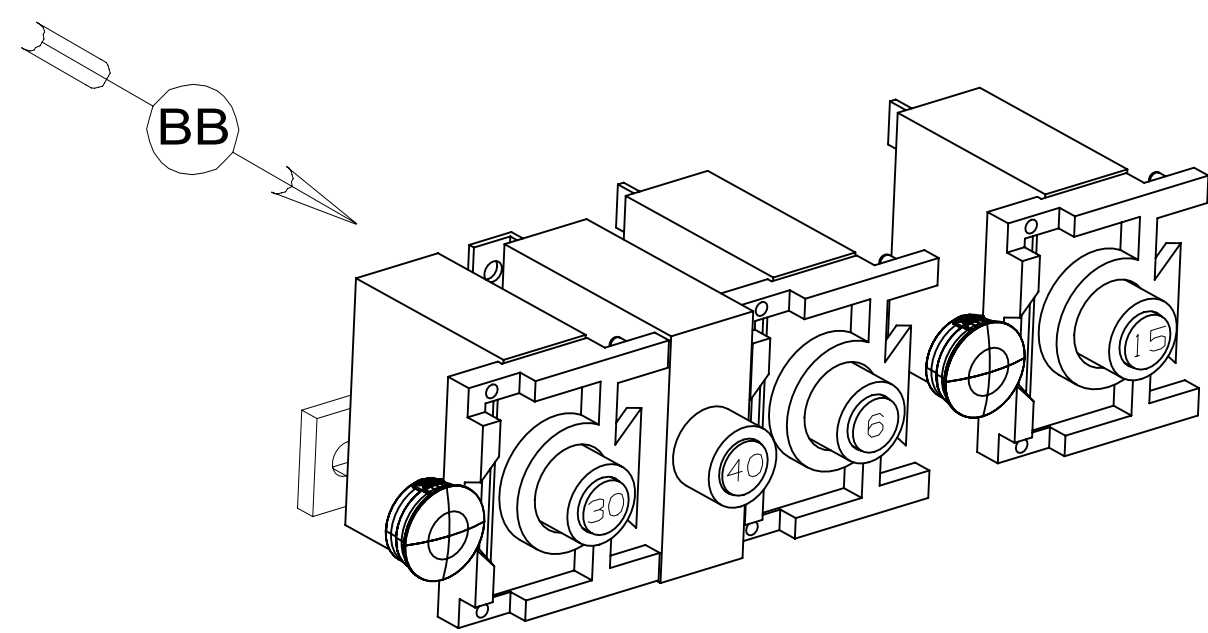
5

4

3

2

1



LABEL  
93236-78-000

PLATE-CIRCUIT BREAKERS  
165712-03-CHT  
SCREW  
G39-08-08U (6)

LABEL  
98379-01-000

LABEL  
98379-04-000

COVER 1

<b>WINNEBAGO</b>		COPYRIGHT 2014 WINNEBAGO INDUSTRIES, INC.	
DTR	ORIG. DATE	ALL DIMENSIONS ARE IN MILLIMETERS	
CHKR			
P.E.			
M.E.	FIRST USED	15 100-SER	
DSNR			
UNSPECIFIED TOLERANCES ARE:		MATERIAL:	
WHOLE DIM (X)	: 3		
ONE-PLACE (X.X)	: 1.5		
TWO-PLACE (X.XX)	: 0.50		
ANGLE	: 1°		
THIRD ANGLE PROJECTION			
DO NOT SCALE DRAWING	REFER TO ES0018 FOR FASTENER TIGHTENING GUIDELINES		
TITLE: <b>CHASSIS ELECTRICAL BOX ASM</b>			
SHEET 1 OF 2	PART NO	187567	REV

1 SUPPLIED WITH CHASSIS.  
NOTES:

8

7

6

5

4

3

2

\*187567\*

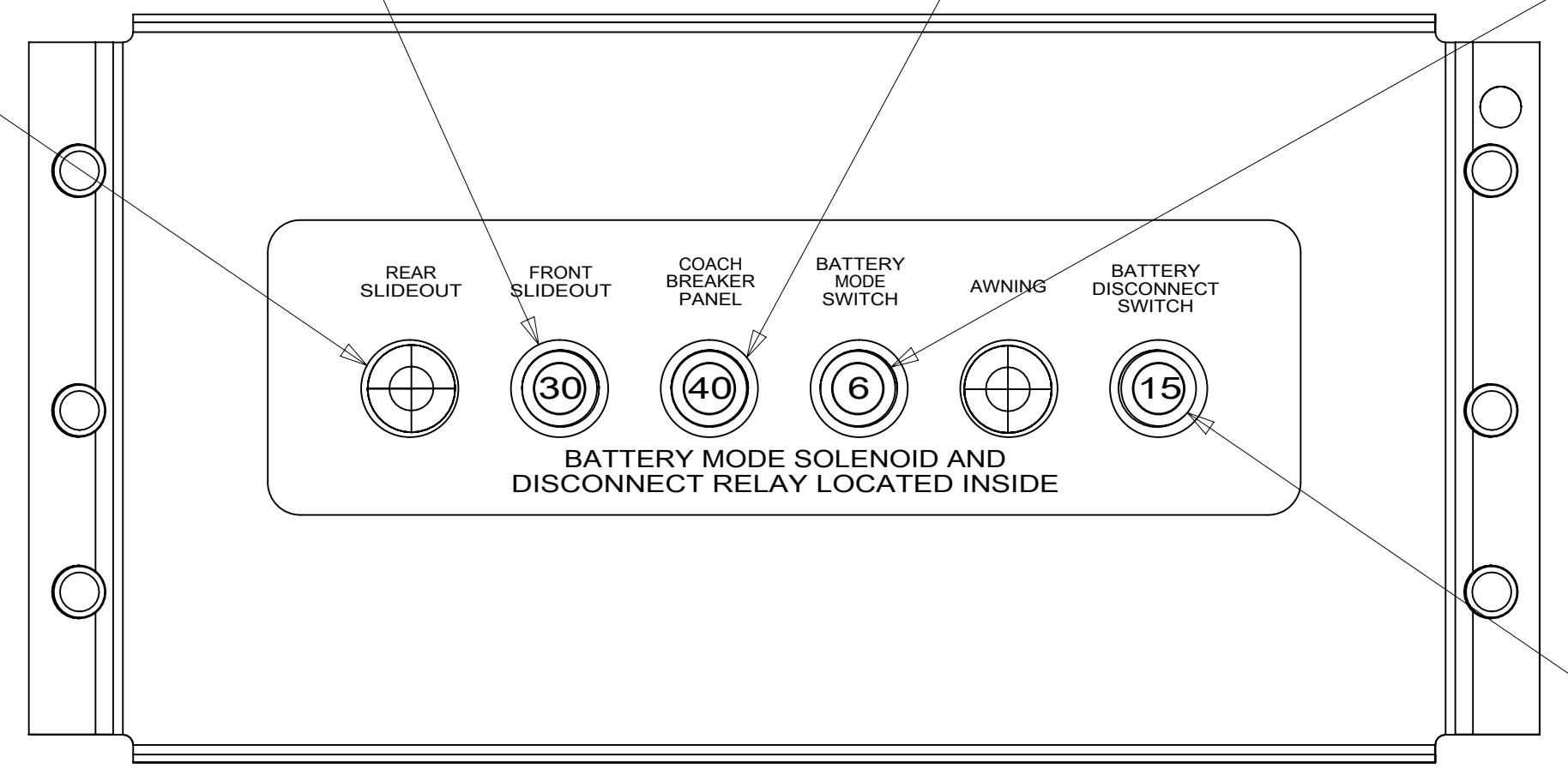
09L  
 5  
 1  
 CIRCUIT BREAKER-30 AMP  
 093655-02-000  
 SCREW  
 000G52-06-04U  
 000G52-06-05U  
 SPACER-CIRCUIT BREAKER  
 141789-01-000  
 PLUG  
 081211-06-000

1  
 CIRCUIT BREAKER-40 AMP  
 093655-03-000  
 SCREW  
 000G19-10-08U

CIRCUIT BREAKER-6 AMP  
 093654-01-000  
 SCREW  
 000G52-06-05U  
 SPACER  
 141789-01-000

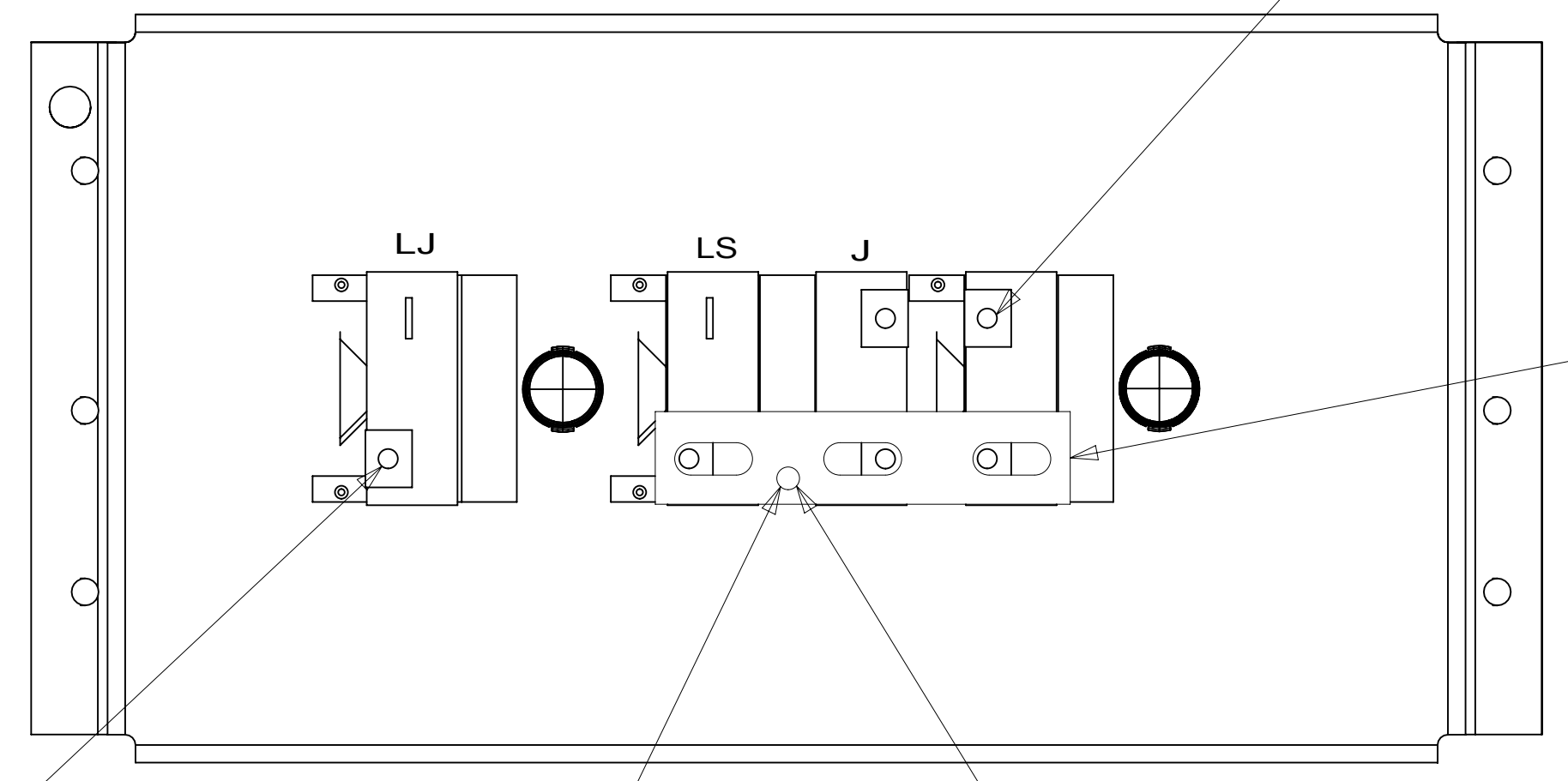
09L  
 CCY

09L  
 5  
 PLUG  
 081211-06-000 (2)

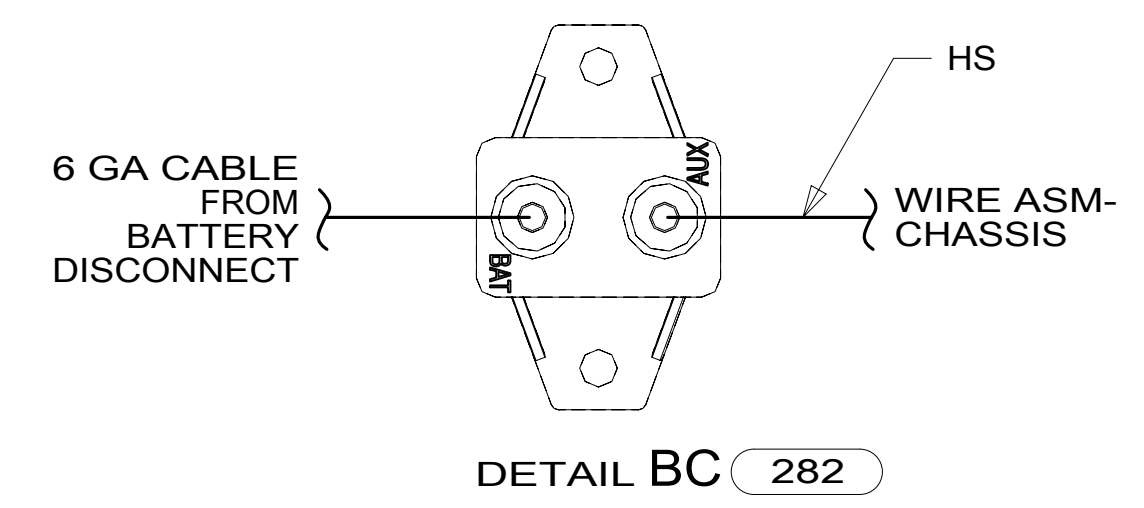


VIEW BA

CIRCUIT BREAKER-15 AMP  
 093654-02-000  
 SCREW  
 000G52-06-05U  
 SPACER  
 141789-01-000



VIEW BB



DETAIL BC 282

282 CABLE ASM-6 GA  
 104226-01-003

CABLE ASM (RED)  
 141415-31-002

282 HS

CIRCUIT BREAKER-30 AMP  
 183624-03-000  
 SCREW  
 G39-10-12U (2)  
 NUT  
 D24-10-00U (2)  
 WASHER  
 E13-10-00U (2)  
 DETAIL BC

282

3 COACH BATTERY  
 CABLE ASM (YEL)

09L  
 RELAY-SLIDEOUT  
 063912-02-000 (2)  
 SCREW  
 000G39-08-08U (2)

3 CHASSIS BATTERY  
 CABLE ASM (RED)

4 FM

SOLENOID  
 8188-01-000  
 SCREW  
 000G50-04-12U (2)  
 NUT  
 000D39-04-00U (2)

BRACKET-SOLENOID  
 164949-04-CHT  
 NUT  
 OMD54U-06-000 (2)

RELAY-BATTERY  
 DISCONNECT  
 180722-01-000  
 ISOLATED STUD  
 086233-02-000 (2)  
 SCREW  
 000G39-10-12U (4)  
 NUT  
 000D39-05-00U (2)

CABLE ASM (GRN)  
 TO GENERATOR 3

FROM WIRE  
 ASM-CHASSIS

- NOTES:
- 5 WITHOUT 09L
  - 4 SECURE WITH SOLENOID MOUNTING SCREW.
  - 3 WIRING INSTL-CHASSIS FOR ADDITIONAL INFORMATION.
  - 2 WIRE IS MARKED WITH YELLOW TAPE.
  - 1 REPLACE EXISTING SCREW TO PROPERLY ATTACH BREAKER TO BUSS BAR.

- 282 SOLAR PANEL - 100 WATT
- 09L SLIDEOUT ROOM FRONT LEFT
- 265 CODES/STANDARDS-CSA/CMVSS
- 1B1 CODES/STANDARDS USA

FIRST USED	
<b>15 100-SER</b>	
DO NOT SCALE DRAWING	
TITLE: <b>CHASSIS ELECTRICAL BOX ASM</b>	
SHEET 2	PART NO <b>187567</b> REV
1 08-Jul-2015	

\*187567\*