



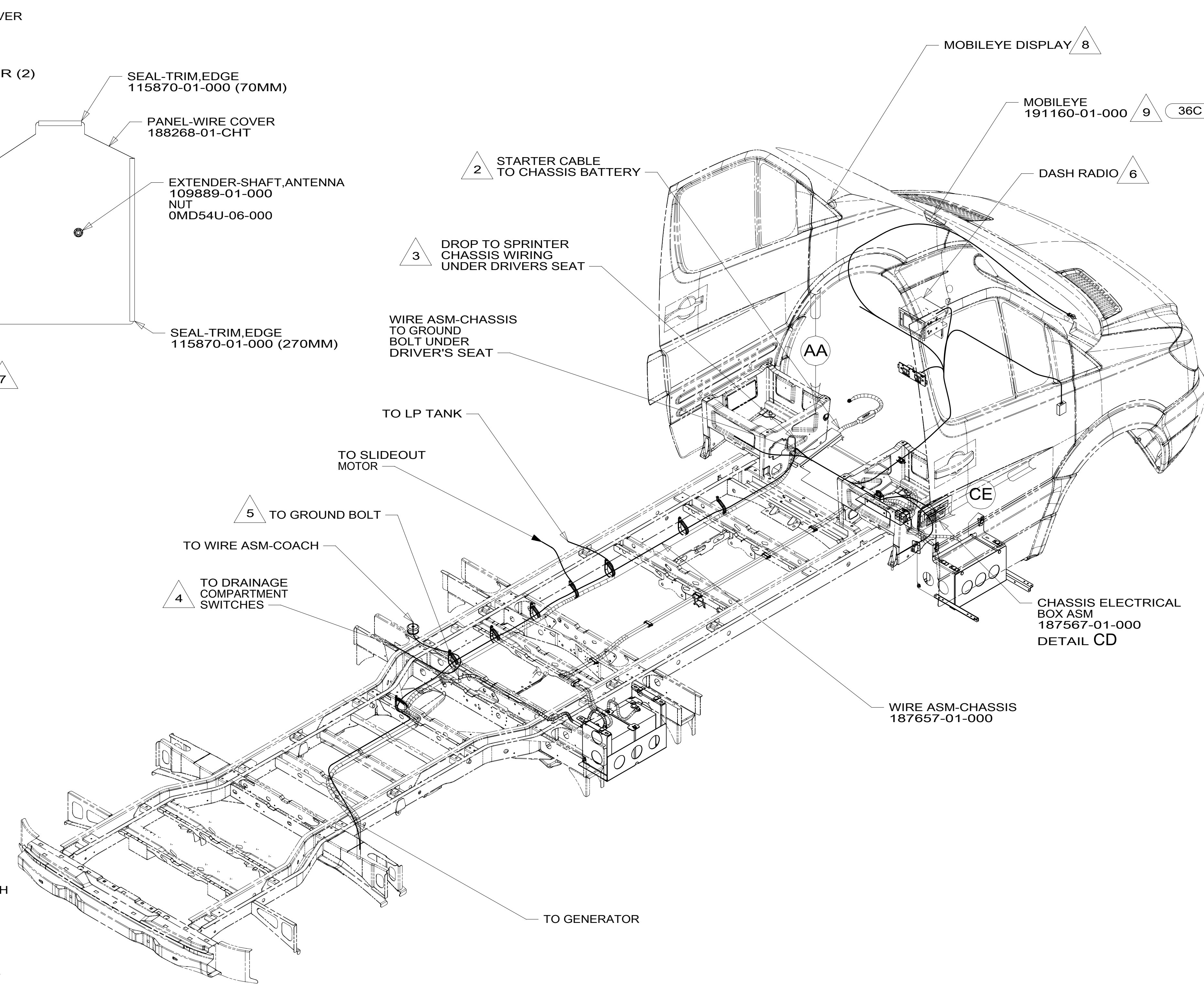
DANGER

Danger of electrical shock, burns or death. Always remove all power sources before attempting any repair, service or diagnostic work. Power can be present from shore power, generator, inverter or battery. All power sources must be disabled and secured before performing any service.



CAUTION

If you lack the skills, tools or equipment to perform diagnostic or repair work leave such work to an authorized Winnebago Industries dealer or other qualified shop.



- 9 REMOVE REAR VIEW MIRROR & MOUNT CAMERA TO CENTER OF WINDSHIELD AND 25MMBELOW REAR VIEW MIRROR BUTTON. ROUTE CABLE UP ABOVE HEADLINER THEN LEFT DOWN LEFT A-POST COVER TO CENTER DASH TO CONNECT TO WIRE ASM-CHASSIS.
- 8 NOTCH A-POST COVER WHERE IT MEETS THE DASH TO ALLOW DISPLAY CABLE THROUGH. MOUNT DISPLAY TO A-POST COVER AND ADJUST FOR DRIVER'S VIEWING. ROUTE DISPLAY CABLE TO CENTER DASH AND CONNECT TO CAMERA HARNESS.
- 7 REMOVE PLASTIC TRAY AND DISCARD.
- 6 SEE SHT 5 AND SHT 6 FOR ADDITIONAL INFORMATION.
- 5 REMOVE PAINT AND UNDER COATING FROM GROUND BOLT AND NUT TO INSURE PROPER CONTACT.
- 4 SEE WIRING INSTL-BODY,12V FOR ADDITIONAL INFORMATION.
- 3 CUT WIRE TIE AROUND SPRINTER SEAL, ROUTE THE CHASSIS WIRING THROUGH HOLE AND WIRE TIE SEAL WITH WIRE TIE 8343-04-000.
- 2 SEE BATTERY INSTL. FOR ADDITIONAL INFORMATION.

1. SECURE CONDUIT 41953, TAB AS REQUIRED, OVER ALL WIRES IN CONTACT WITH SHARP EDGES.

NOTES:

- 36C COLLISION AVOIDANCE SYSTEM
- 1MW MERCD-11030# DSL,D DOOR VAN
- 265 CODES/STANDARDS-CSA/CMVSS
- 1B1 CODES/STANDARDS USA

- 1B1 265 1MW

WINNEBAGO COPYRIGHT 2014 WINNEBAGO INDUSTRIES, INC.

DFTR	ORIG. DATE
CHKR	ALL DIMENSIONS ARE IN MILLIMETERS
P.E.	
M.E.	
DSNR	
15 170C	

UNSPECIFIED TOLERANCES ARE:	MATERIAL:
WHOLE DIM (X) : 3	
ONE-PLACE (X.X) : 1.5	
TWO-PLACE (X.XX) : 0.50	
ANGLE : 1°	
THIRD ANGLE PROJECTION	

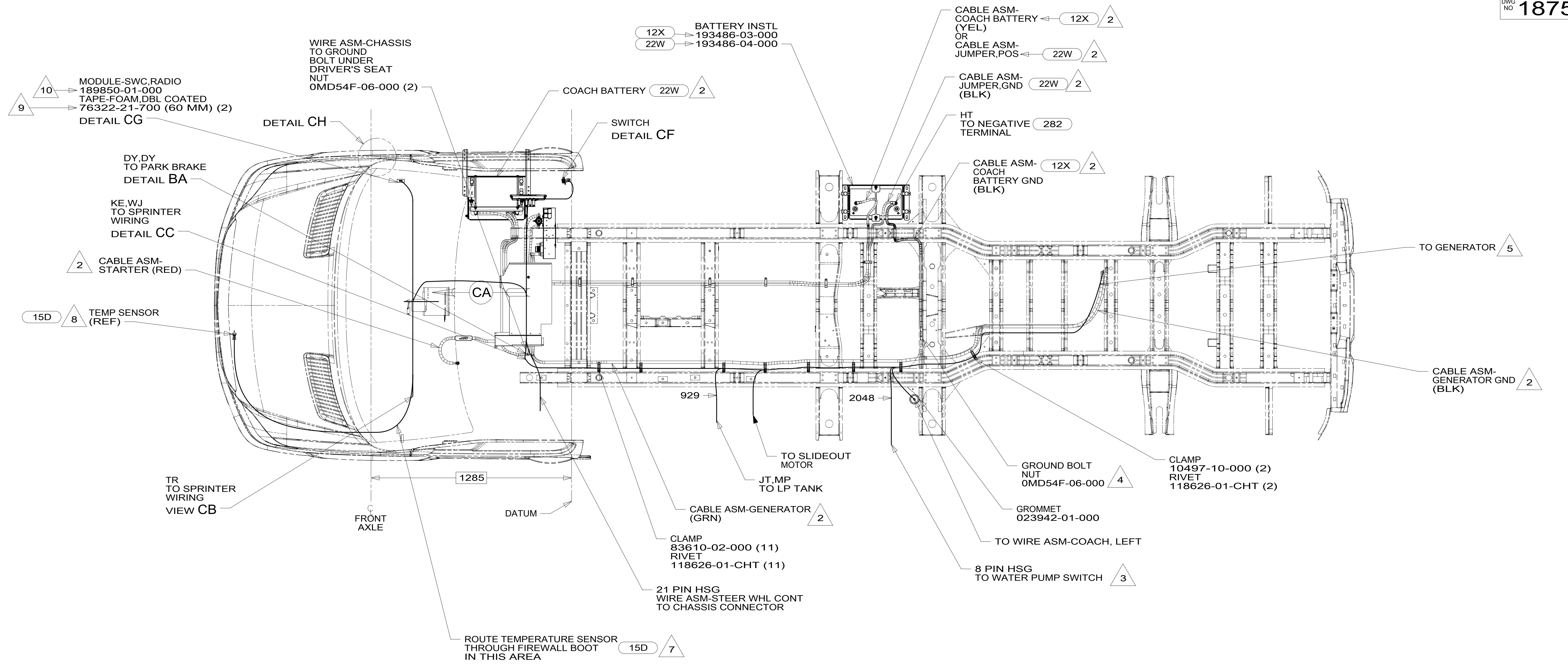
DO NOT SCALE DRAWING REFER TO ES0018 FOR FASTENER TIGHTENING GUIDELINES

TITLE: **WIRING INSTL-CHASSIS**
 SHEET 1 OF 6 PART NO 187564 REV

FOR ELECTRICAL TORQUE SPECIFICATIONS SEE DWG NO. 128783-01-000

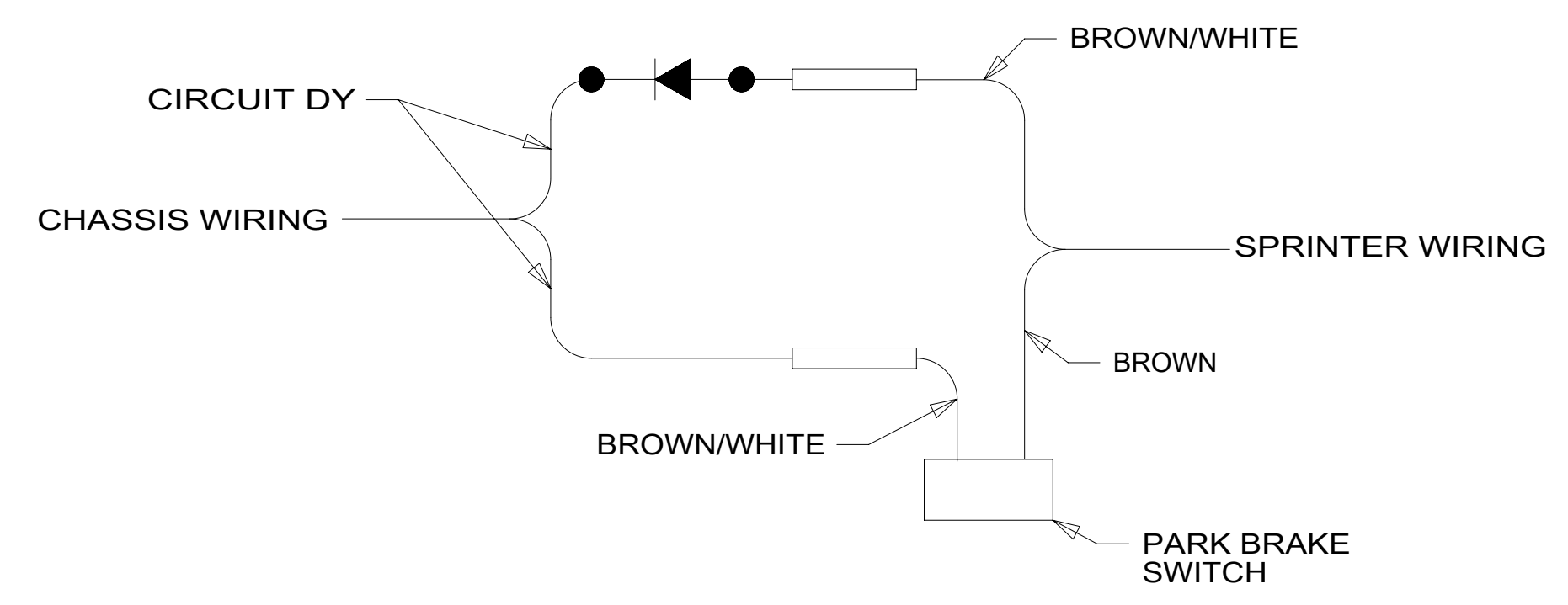
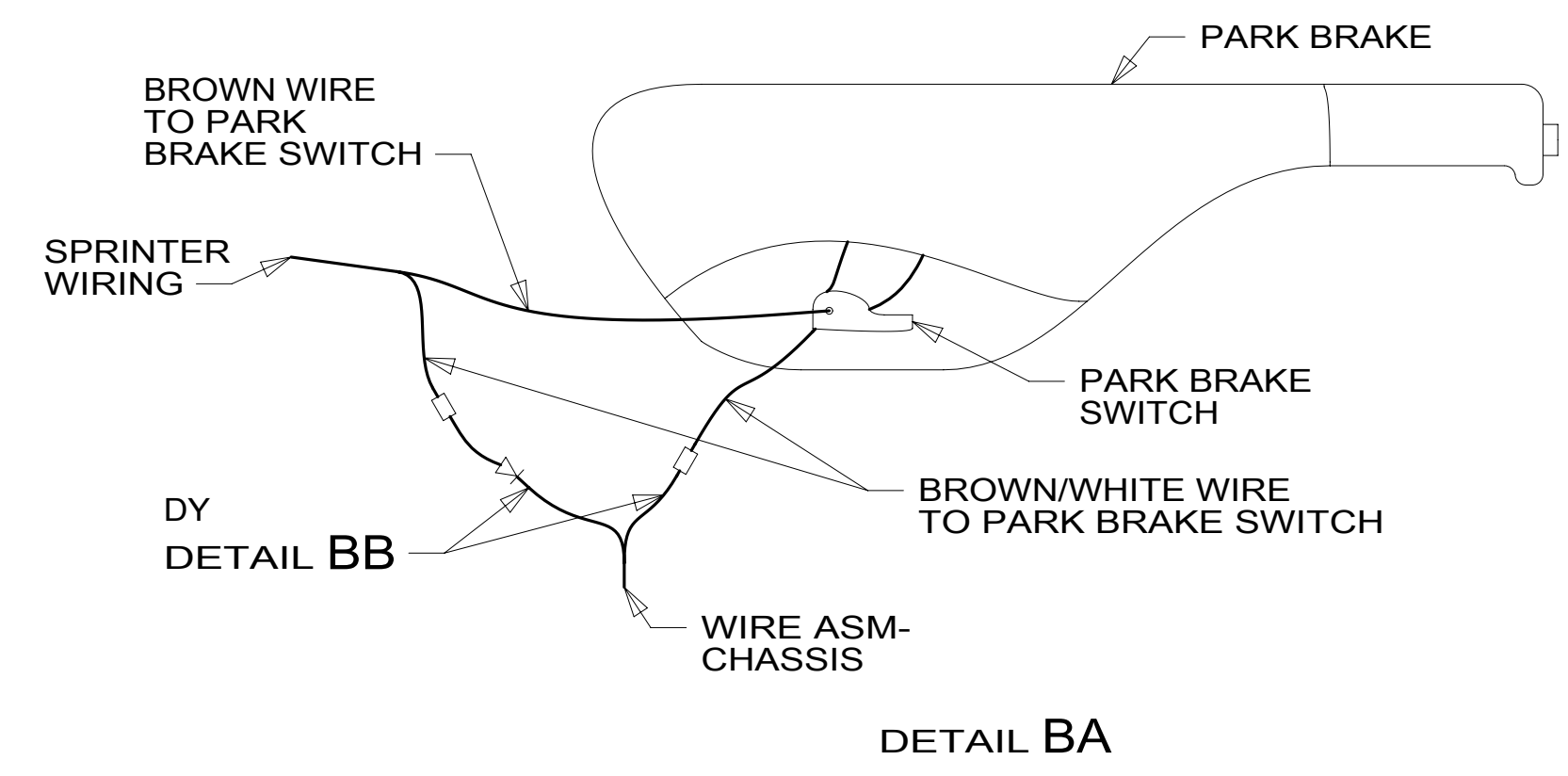
FOR ELECTRICAL CALLOUTS SEE DWG NO. 121339-01-000

*187564 *A



- 10 REFERENCE MODULE DRAWING FOR SETUP PROCEDURE.
- 9 CLEAN AND APPLY ADHESIVE PROMOTOR 87211-01-000 TO BOTH SURFACES AND BOND MODULE TO KICKER PANEL.
- 8 DRILL 16MM HOLE THROUGH BUMPER COVER BEHIND LICENSE PLATE BRACKET AND INSTALL SENSOR.
- 7 SEE SHEET 4 FOR ADDITIONAL INFORMATION.
- 6 CUT BROWN/BLACK WIRE FROM PARK BRAKE SWITCH AND RECONNECT TO CIRCUIT DY OF WIRE ASM-CHASSIS AS SHOWN.
- 5 SEE GENERATOR INSTL FOR ADDITIONAL INFORMATION.
- 4 REMOVE PAINT AND UNDER COATING FROM GROUND BOLT AND NUT TO INSURE PROPER CONTACT.
- 3 SEE WIRING INSTL-BODY, 12V FOR ADDITIONAL INFORMATION.
- 2 SEE BATTERY INSTL FOR ADDITIONAL INFORMATION.

1. SECURE CONDUIT 41953, TAB AS REQUIRED, OVER ALL WIRES IN CONTACT WITH SHARP EDGES.



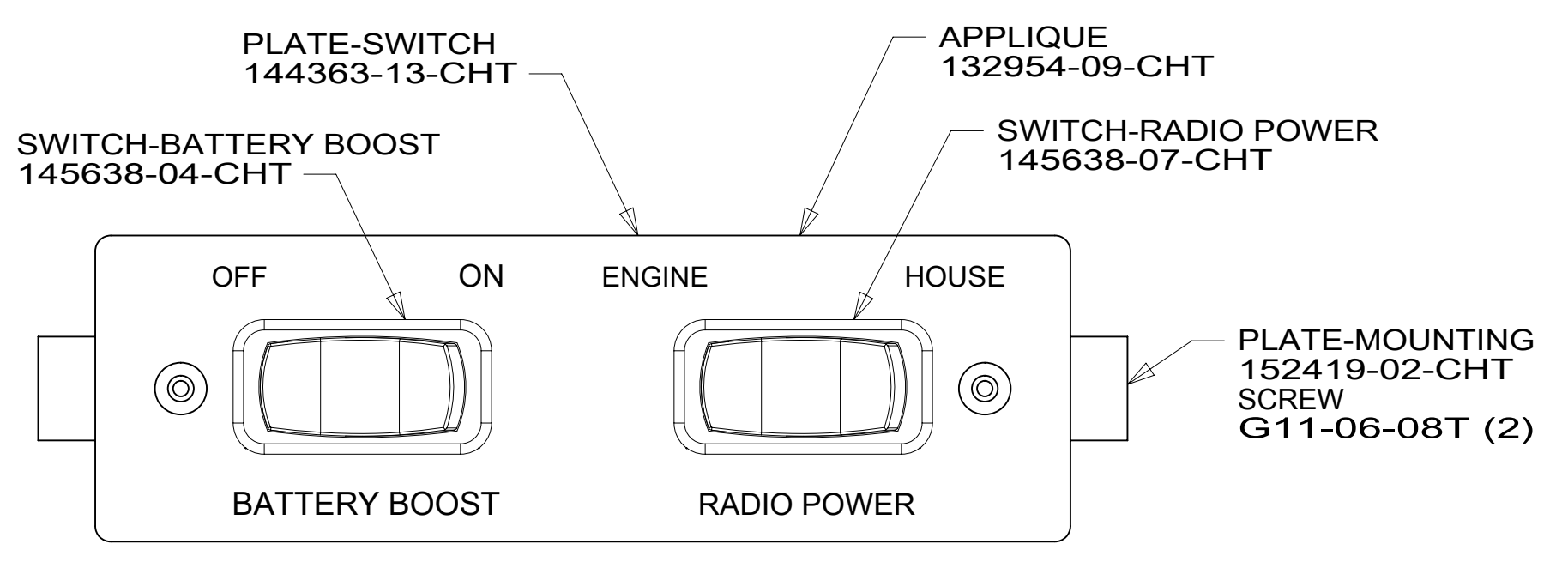
- 282 SOLAR PANEL - 100 WATT
- 15D INFOTAINMENT CENTER/GPS
- 22W BATTERY-SECOND
- 12X BATTERY-ONE
- 1MW MERCD-11030# DSL, D DOOR VAN
- 265 CODES/STANDARDS-CSA/CMVSS
- 1B1 CODES/STANDARDS USA

1B1	265	1MW
FIRST USED		
15 170C		
DO NOT SCALE DRAWING		
TITLE: WIRING INSTL-CHASSIS		
SHEET 2	PART NO 187564	REV

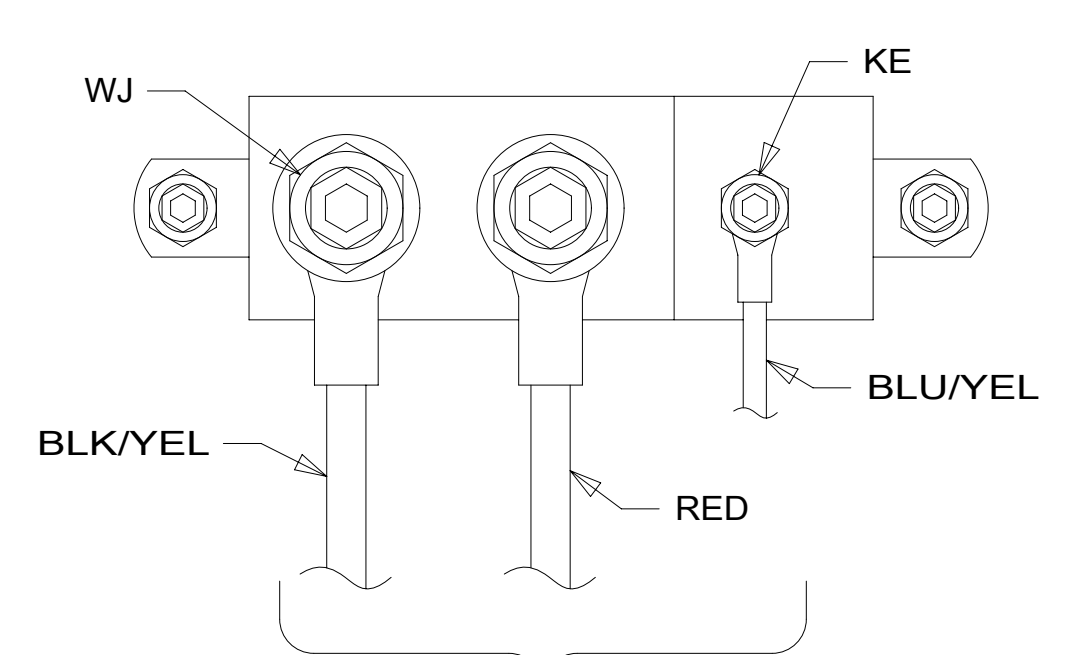
FOR ELECTRICAL TORQUE SPECIFICATIONS SEE DWG NO. 128783-01-000

FOR ELECTRICAL CALLOUTS SEE DWG NO. 121339-01-000

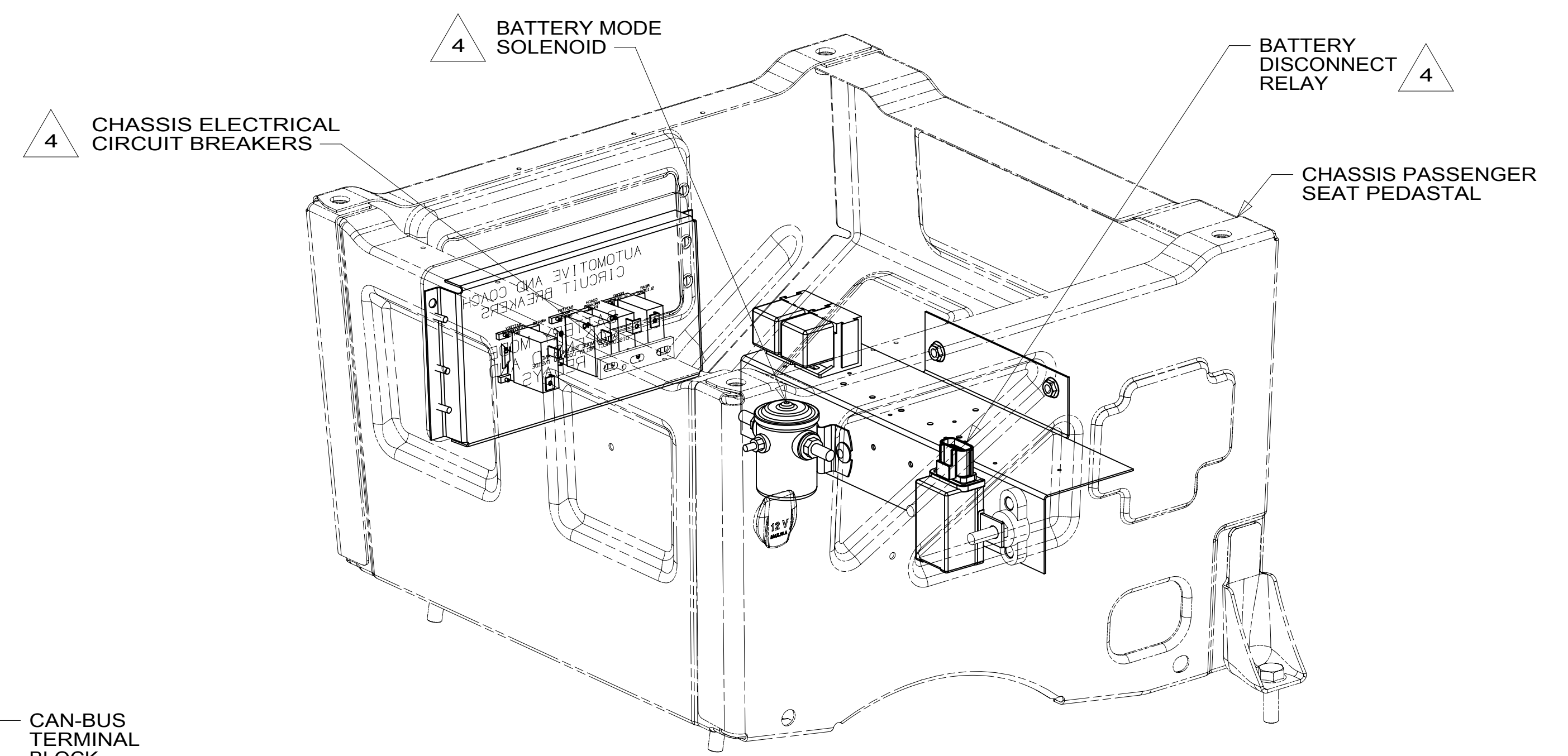
*187564 *A



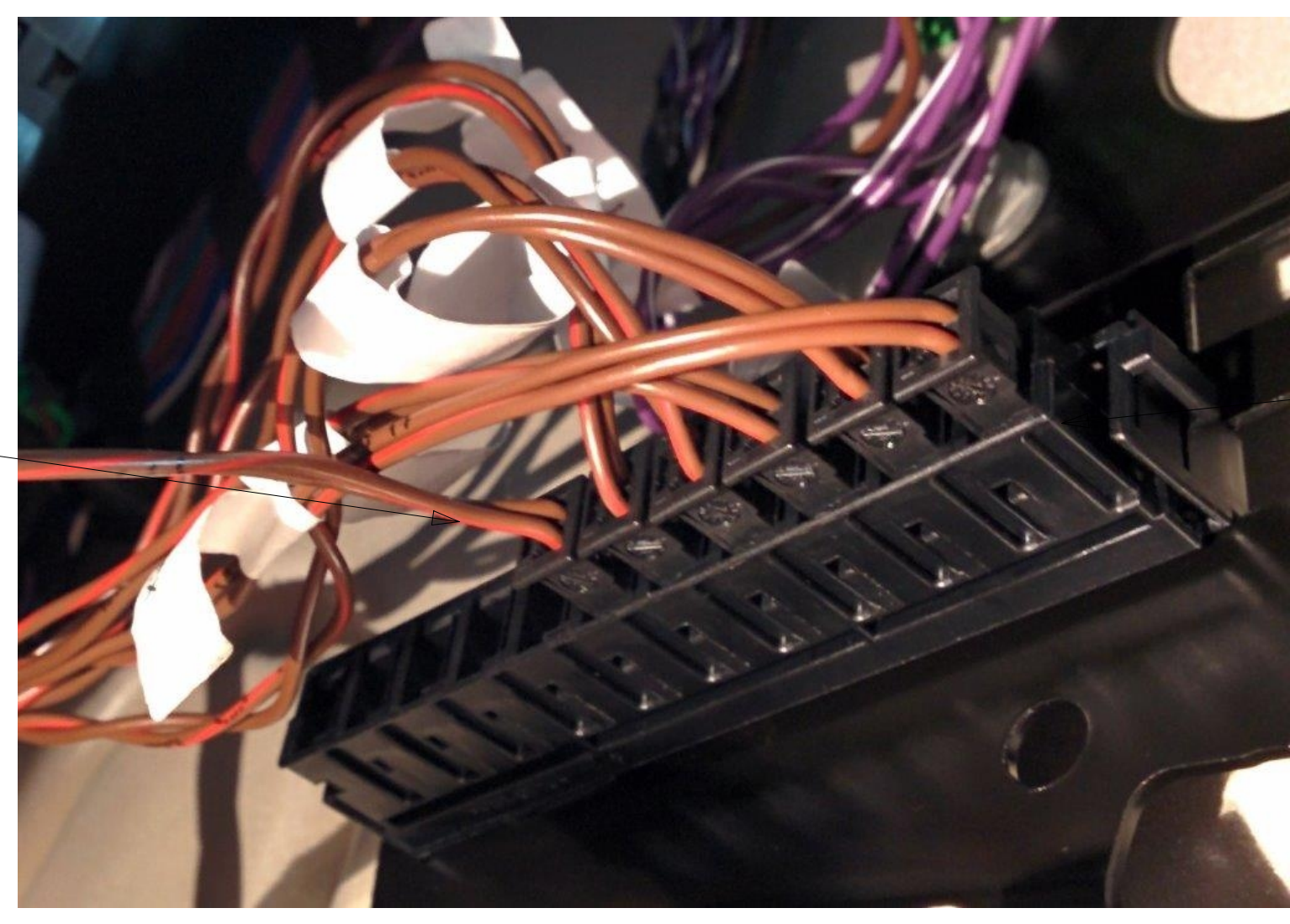
DETAIL CA



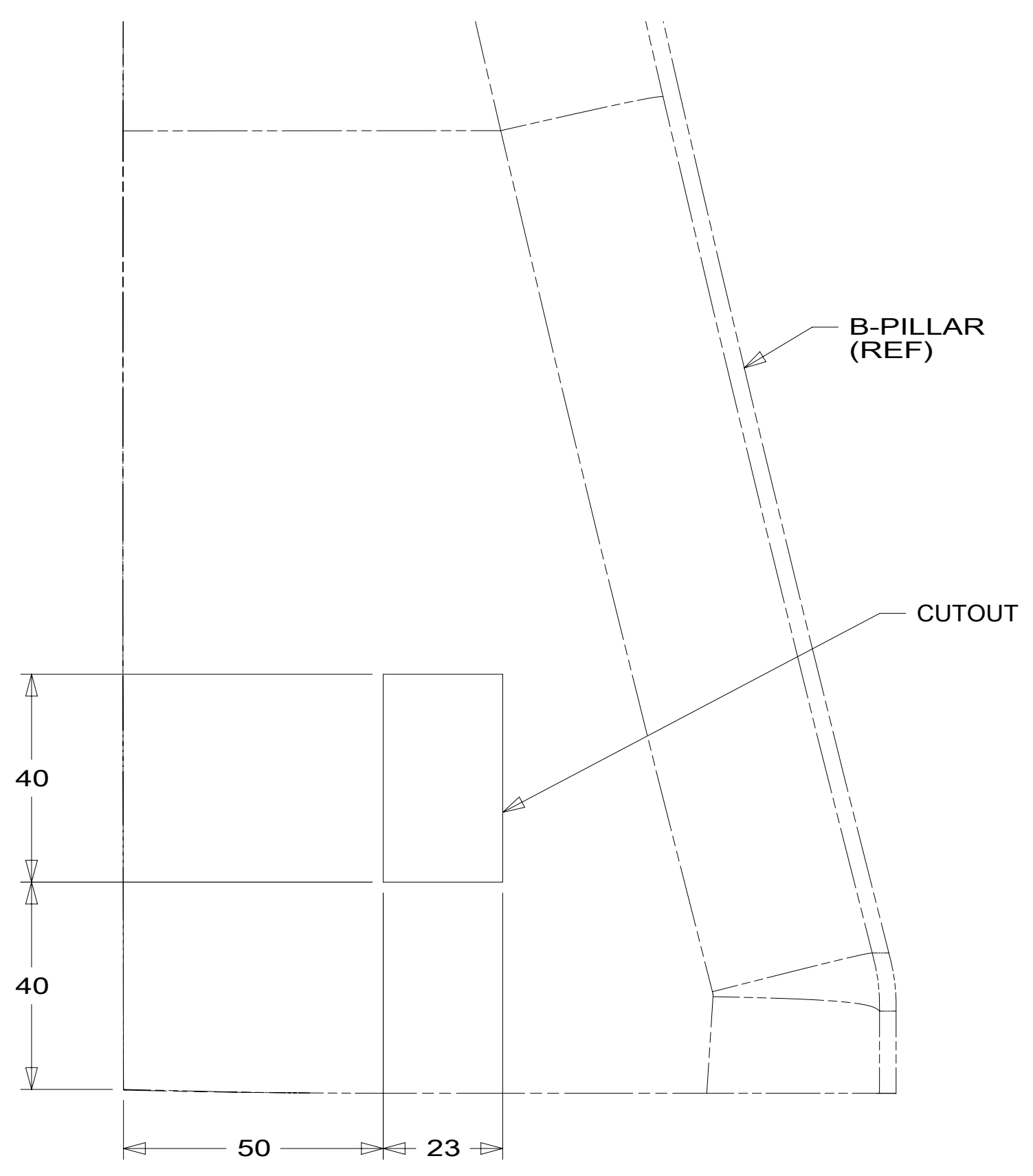
DETAIL CC 3



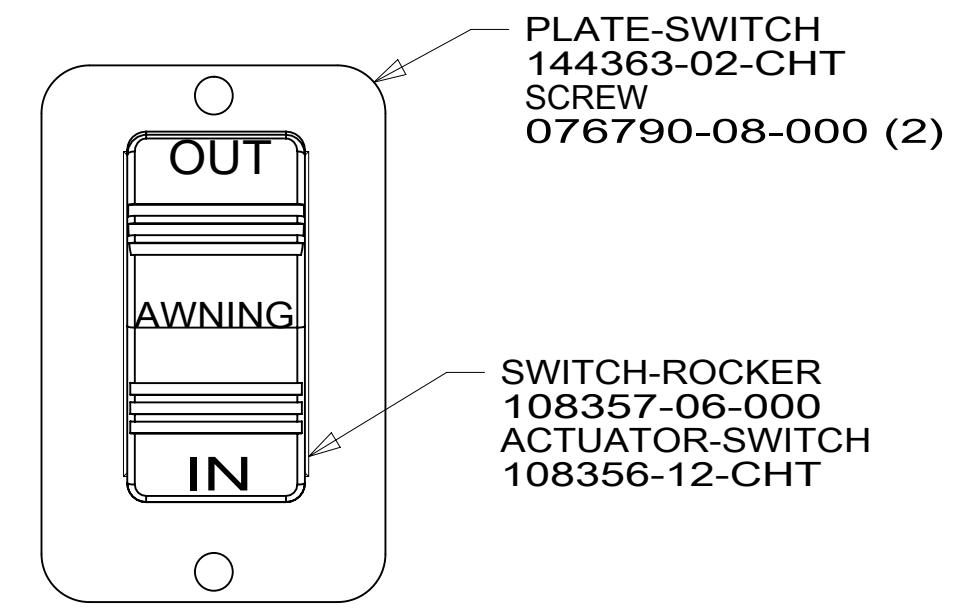
DETAIL CD



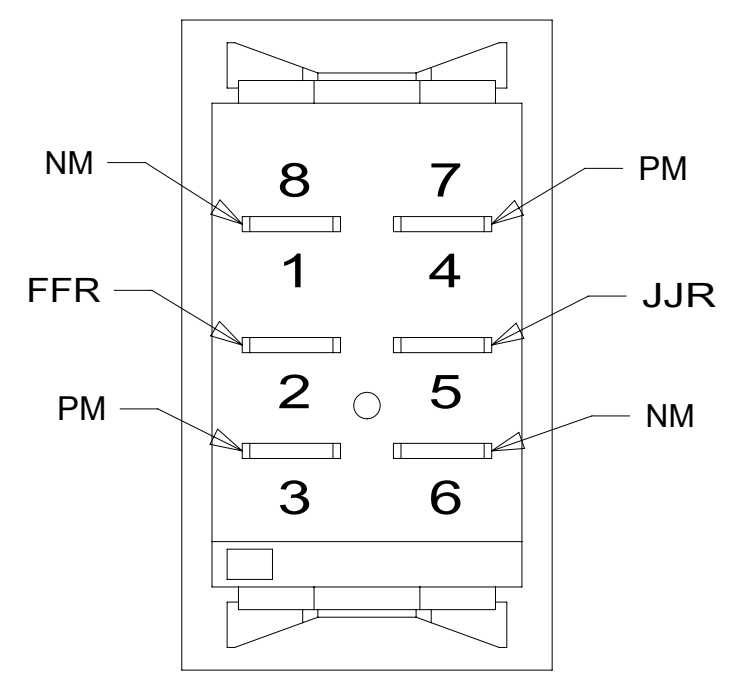
DETAIL CH



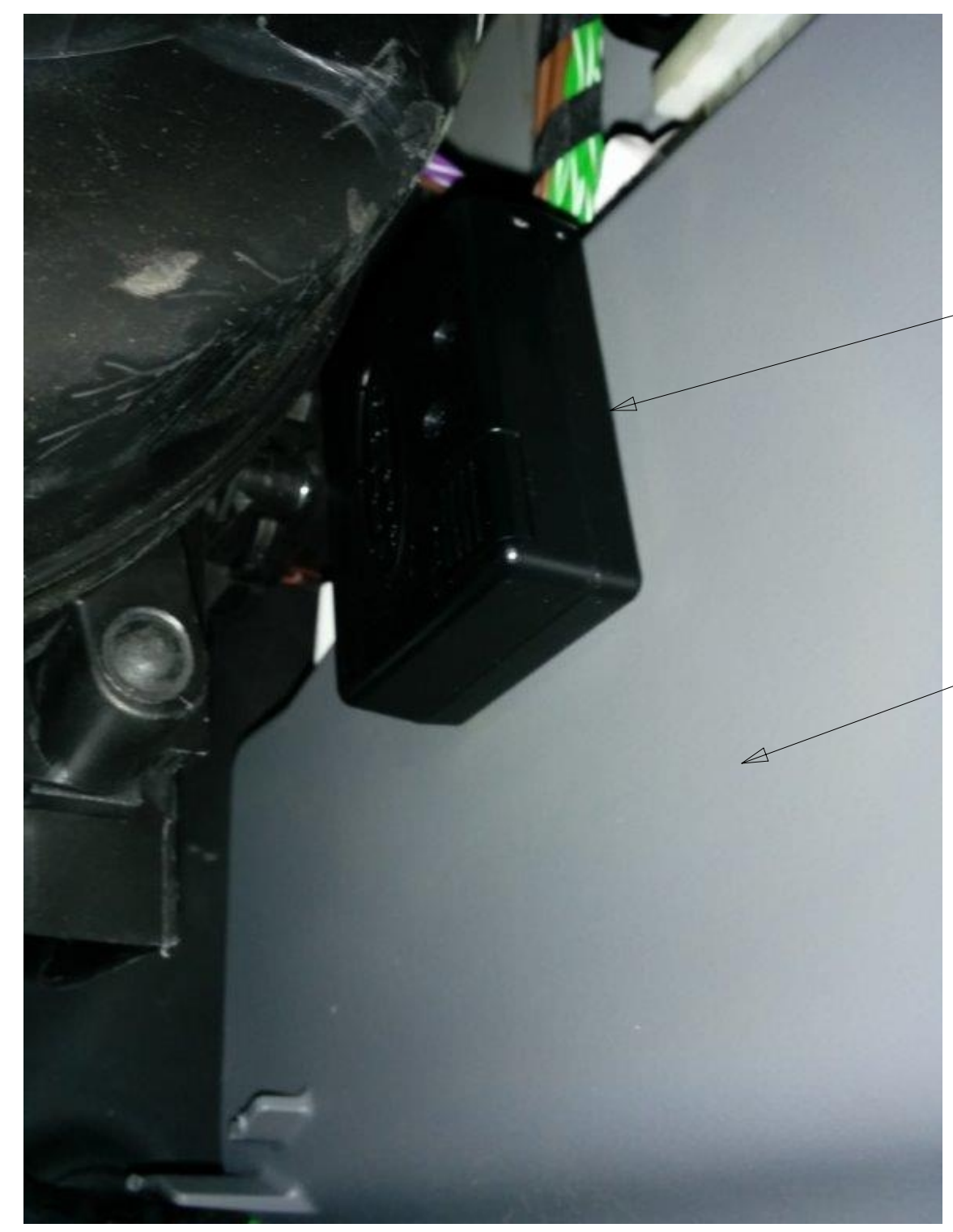
VIEW CE



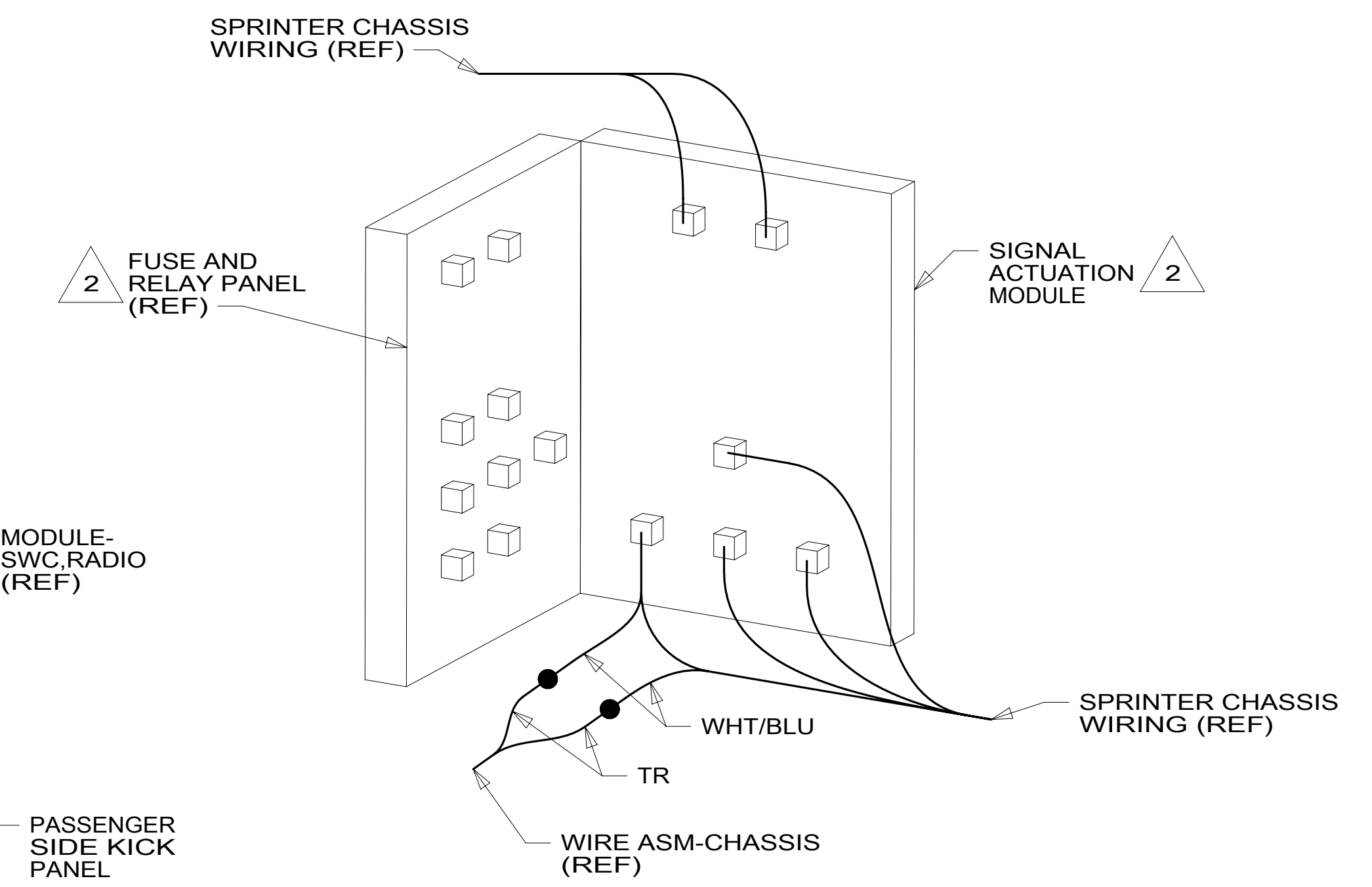
DETAIL CF (FRONT)



DETAIL CF (REAR)



DETAIL CG (LOCATED UNDER DASH)



VIEW CB

- NOTES:
- 5 PLUG CHASSIS SUPPLIED 2-PIN HOUSING INTO CAN-BUS TERMINAL BLOCK.
 - 4 SEE CHASSIS ELECTRICAL BOX ASM FOR ADDITIONAL INFORMATION.
 - 3 CONNECTION POINT IS LOCATED UNDER DRIVERS SEAT.
 - 2 LOCATED IN DRIVERS SIDE KICKER PANEL.
 - 1. SECURE CONDUIT 41953, TAB AS REQUIRED, OVER ALL WIRES IN CONTACT WITH SHARP EDGES.

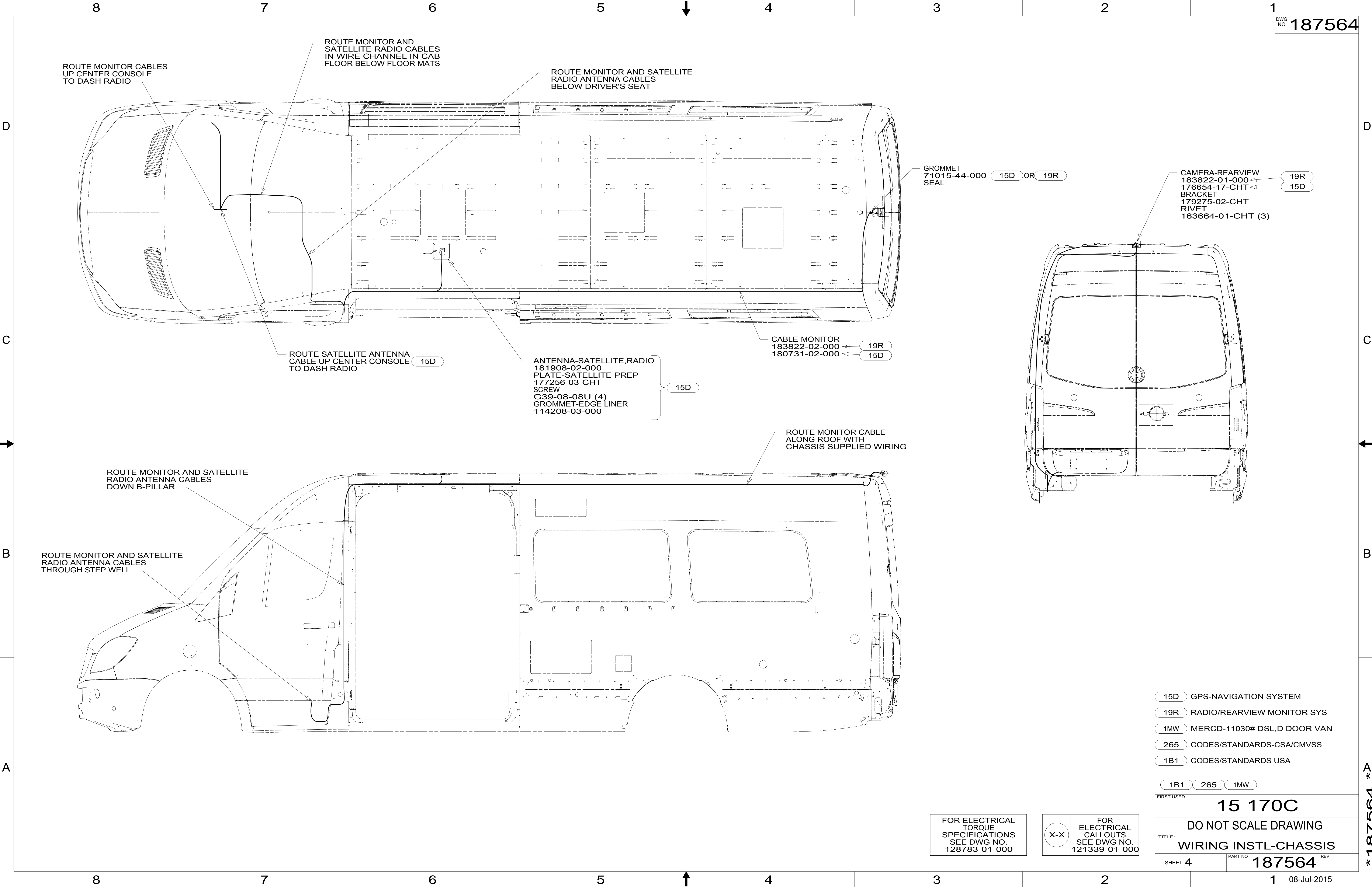
FOR ELECTRICAL TORQUE SPECIFICATIONS SEE DWG NO. 128783-01-000

FOR ELECTRICAL CALLOUTS SEE DWG NO. 121339-01-000

- 1MW MERCD-11030# DSL,D DOOR VAN
- 265 CODES/STANDARDS-CSA/CMVSS
- 1B1 CODES/STANDARDS USA

FIRST USED	15 170C
DO NOT SCALE DRAWING	
TITLE: WIRING INSTL-CHASSIS	
SHEET 3	PART NO. 187564 REV
1 08-Jul-2015	

*187564 *A



ROUTE MONITOR CABLES UP CENTER CONSOLE TO DASH RADIO

ROUTE MONITOR AND SATELLITE RADIO CABLES IN WIRE CHANNEL IN CAB FLOOR BELOW FLOOR MATS

ROUTE MONITOR AND SATELLITE RADIO ANTENNA CABLES BELOW DRIVER'S SEAT

GROMMET 71015-44-000 SEAL 15D OR 19R

CAMERA-REARVIEW 183822-01-000 19R
 176654-17-CHT 15D
 BRACKET 179275-02-CHT
 RIVET 163664-01-CHT (3)

ROUTE SATELLITE ANTENNA CABLE UP CENTER CONSOLE TO DASH RADIO 15D

ANTENNA-SATELLITE,RADIO 181908-02-000
 PLATE-SATELLITE PREP 177256-03-CHT
 SCREW G39-08-08U (4)
 GROMMET-EDGE LINER 114208-03-000 15D

CABLE-MONITOR 183822-02-000 19R
 180731-02-000 15D

ROUTE MONITOR CABLE ALONG ROOF WITH CHASSIS SUPPLIED WIRING

ROUTE MONITOR AND SATELLITE RADIO ANTENNA CABLES DOWN B-PILLAR

ROUTE MONITOR AND SATELLITE RADIO ANTENNA CABLES THROUGH STEP WELL

- 15D GPS-NAVIGATION SYSTEM
- 19R RADIO/REARVIEW MONITOR SYS
- 1MW MERCD-11030# DSL,D DOOR VAN
- 265 CODES/STANDARDS-CSA/CMVSS
- 1B1 CODES/STANDARDS USA

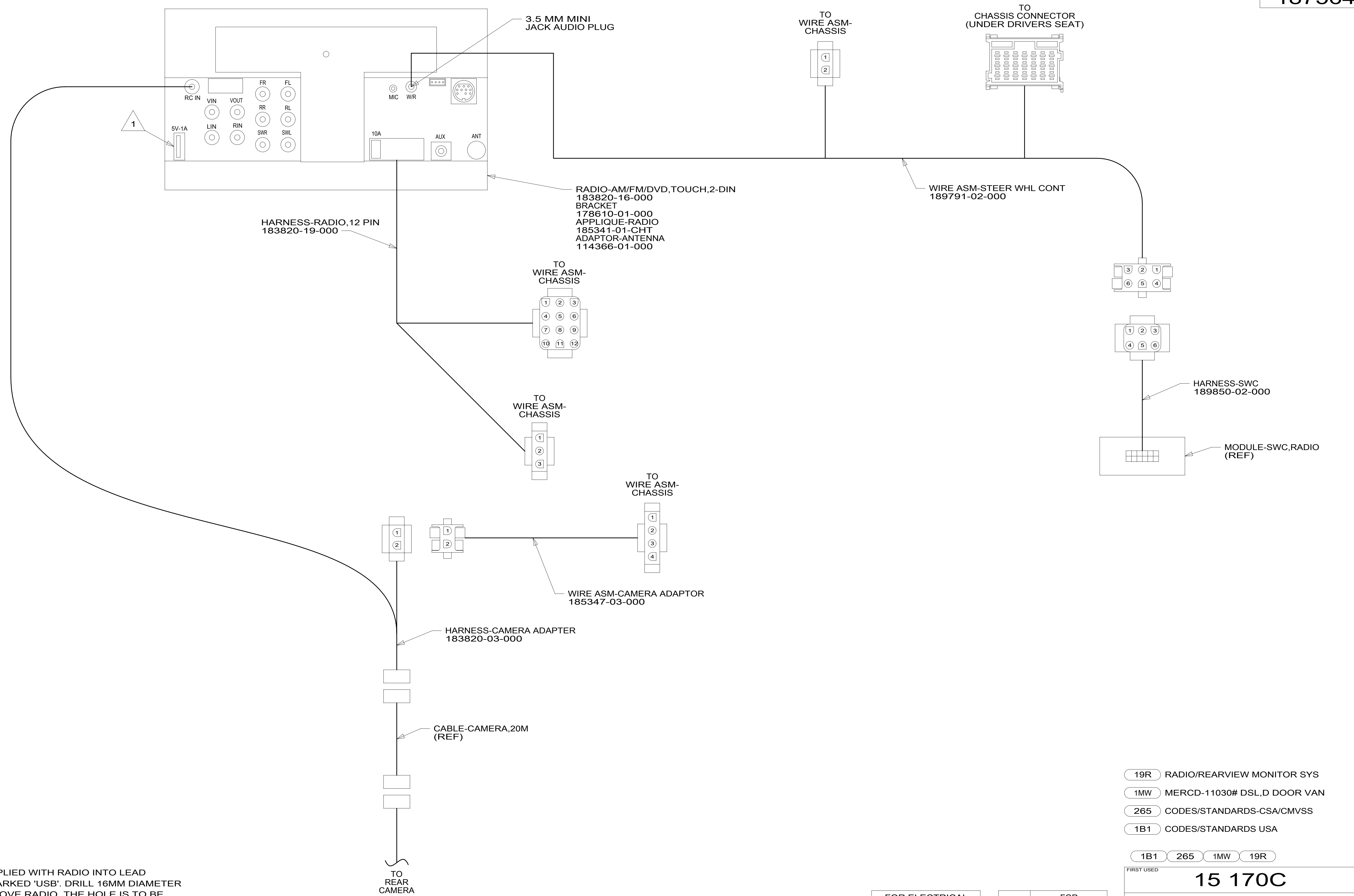
1B1 265 1MW

FOR ELECTRICAL TORQUE SPECIFICATIONS SEE DWG NO. 128783-01-000

FOR ELECTRICAL CALLOUTS SEE DWG NO. 121339-01-000

FIRST USED		15 170C	
DO NOT SCALE DRAWING			
TITLE: WIRING INSTL-CHASSIS			
SHEET 4	PART NO	187564	REV
			1 08-Jul-2015

*187564 *A



1 PLUG USB CABLE SUPPLIED WITH RADIO INTO LEAD ON BACK OF RADIO MARKED 'USB'. DRILL 16MM DIAMETER HOLE IN THE TRAY ABOVE RADIO. THE HOLE IS TO BE LOCATED ON THE PASSENGER SIDE OF THE TRAY 50MM FROM THE END NEAREST THE WINDSHIELD. ROUTE CABLE INTO TRAY AND LEAVE 200MM OF CABLE IN THE TRAY.

NOTES:

FOR ELECTRICAL TORQUE SPECIFICATIONS SEE DWG NO. 128783-01-000

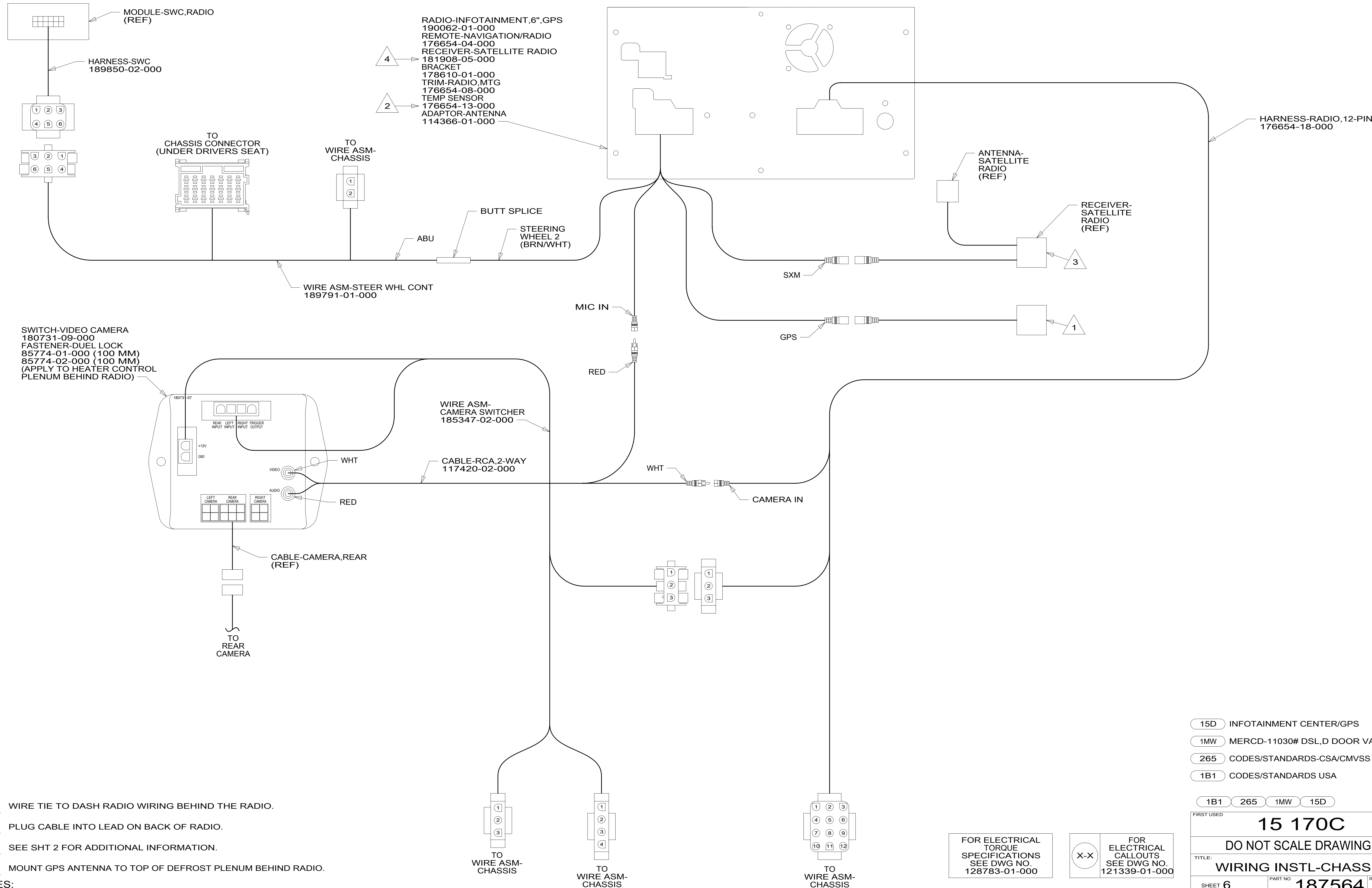
FOR ELECTRICAL CALLOUTS SEE DWG NO. 121339-01-000

- 19R RADIO/REARVIEW MONITOR SYS
- 1MW MERCD-11030# DSL,D DOOR VAN
- 265 CODES/STANDARDS-CSA/CMVSS
- 1B1 CODES/STANDARDS USA

1B1 265 1MW 19R

FIRST USED	15 170C
DO NOT SCALE DRAWING	
TITLE: WIRING INSTL-CHASSIS	
SHEET 5	PART NO 187564 REV
1 08-Jul-2015	

*187564 *A



- NOTES:
- 4 WIRE TIE TO DASH RADIO WIRING BEHIND THE RADIO.
 - 3 PLUG CABLE INTO LEAD ON BACK OF RADIO.
 - 2 SEE SHT 2 FOR ADDITIONAL INFORMATION.
 - 1 MOUNT GPS ANTENNA TO TOP OF DEFROST PLENUM BEHIND RADIO.

- 15D INFOTAINMENT CENTER/GPS
- 1MW MERCD-11030# DSL,D DOOR VAN
- 265 CODES/STANDARDS-CSA/CMVSS
- 1B1 CODES/STANDARDS USA

1B1	265	1MW	15D
FIRST USED			
15 170C			
DO NOT SCALE DRAWING			
TITLE: WIRING INSTL-CHASSIS			
SHEET 6	PART NO	187564	REV
			1 08-Jul-2015

FOR ELECTRICAL TORQUE SPECIFICATIONS SEE DWG NO. 128783-01-000

FOR ELECTRICAL CALLOUTS SEE DWG NO. 121339-01-000

*187564 *A