



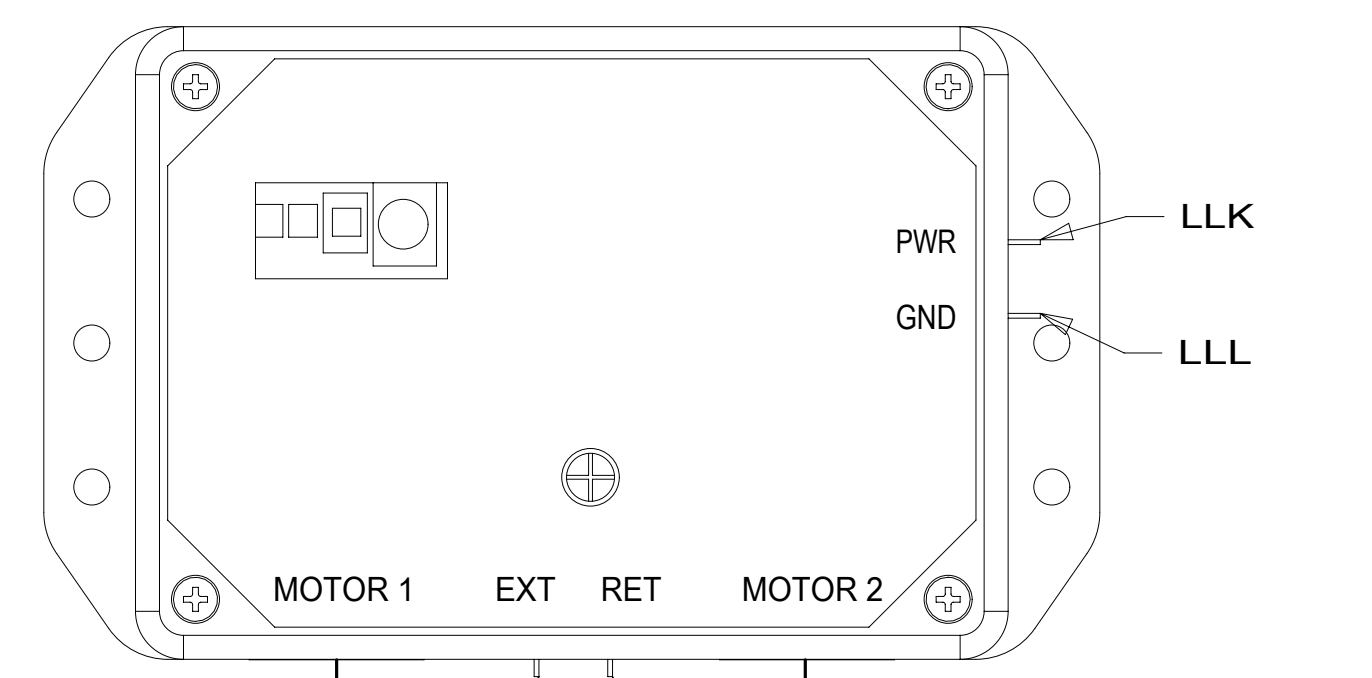
DANGER

Danger of electrical shock, burns or death. Always remove all power sources before attempting any repair, service or diagnostic work. Power can be present from shore power, generator, inverter or battery. All power sources must be disabled and secured before performing any service.



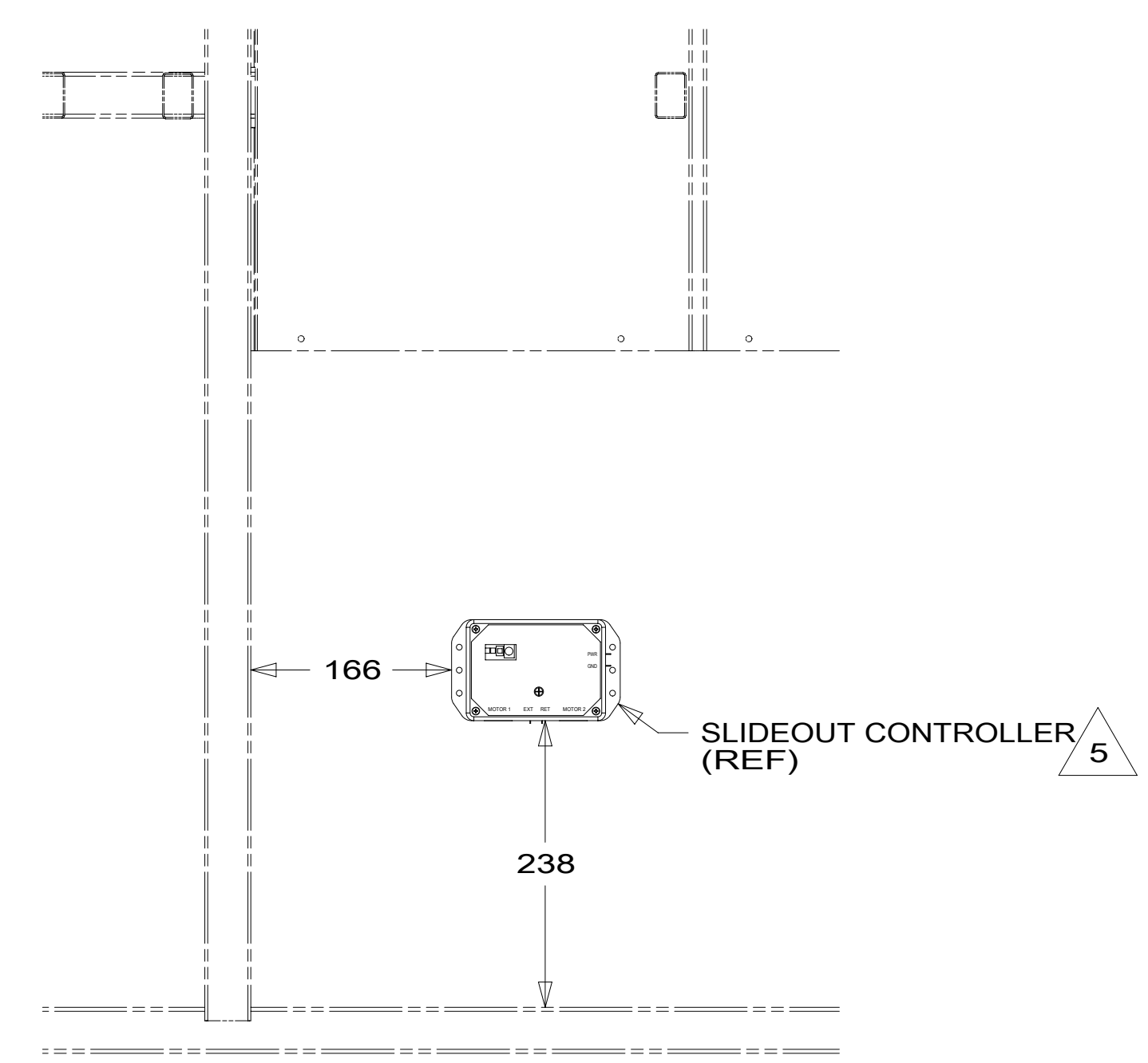
CAUTION

If you lack the skills, tools or equipment to perform diagnostic or repair work leave such work to an authorized Winnebago Industries dealer or other qualified shop.

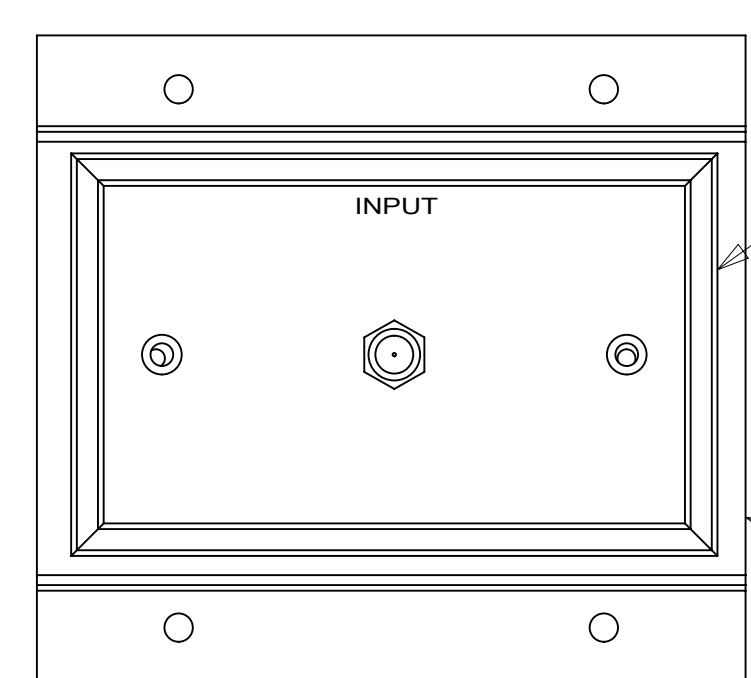
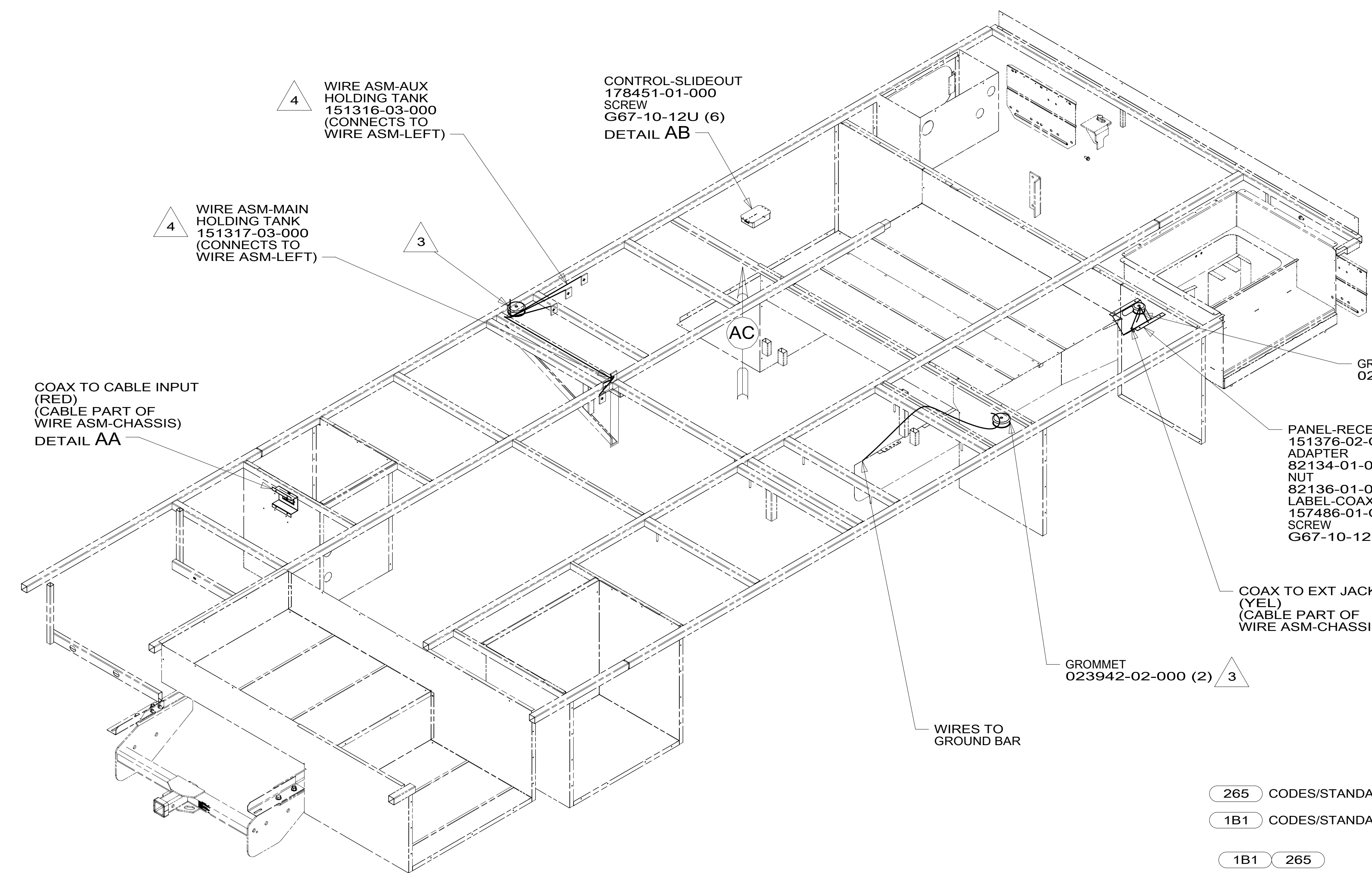


SLIDEOUT WIRE IS PART OF WIRE ASM-CHASSIS
 ROUTE TO REAR MOTOR
 DR
 DU
 ROUTE TO FRONT MOTOR
 SLIDEOUT WIRE IS PART OF WIRE ASM-CHASSIS

DETAIL AB



VIEW AC



DETAIL AA

PLATE-WALL, DUAL COAX
 149557-07-CHT
 SCREW
 G39-08-08U (2)

PANEL-SERVICE
 132862-04-CHT
 SCREW
 G11-10-10U (4)
 CAP-SCREW, MOLDED
 93249-01-000 (4)

FOR ELECTRICAL TORQUE SPECIFICATIONS SEE DWG NO. 128783-01-000

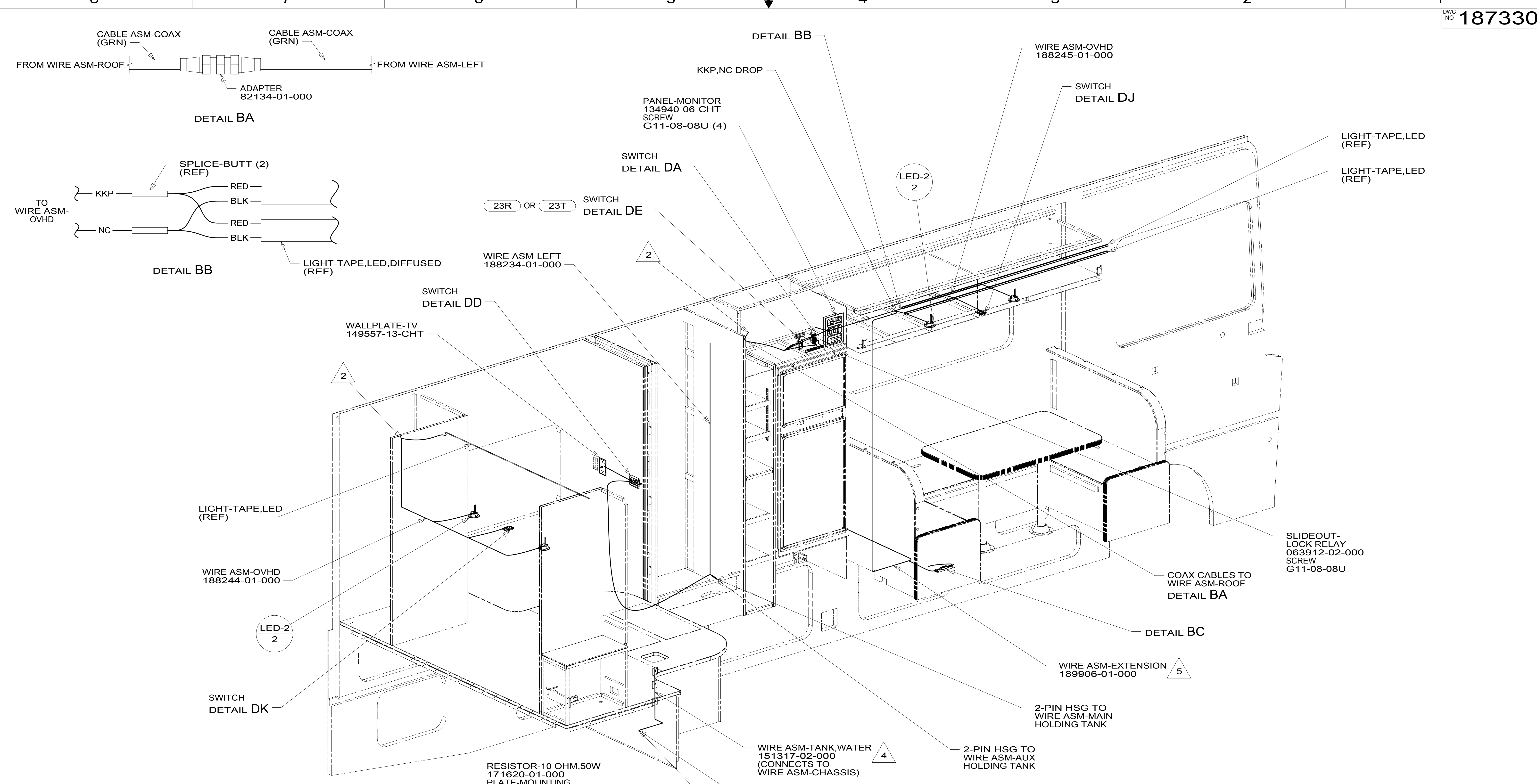
FOR ELECTRICAL CALLOUTS SEE DWG NO. 121339-01-000

- 265 CODES/STANDARDS-CSA/CMVSS
- 1B1 CODES/STANDARDS USA
- 1B1 265

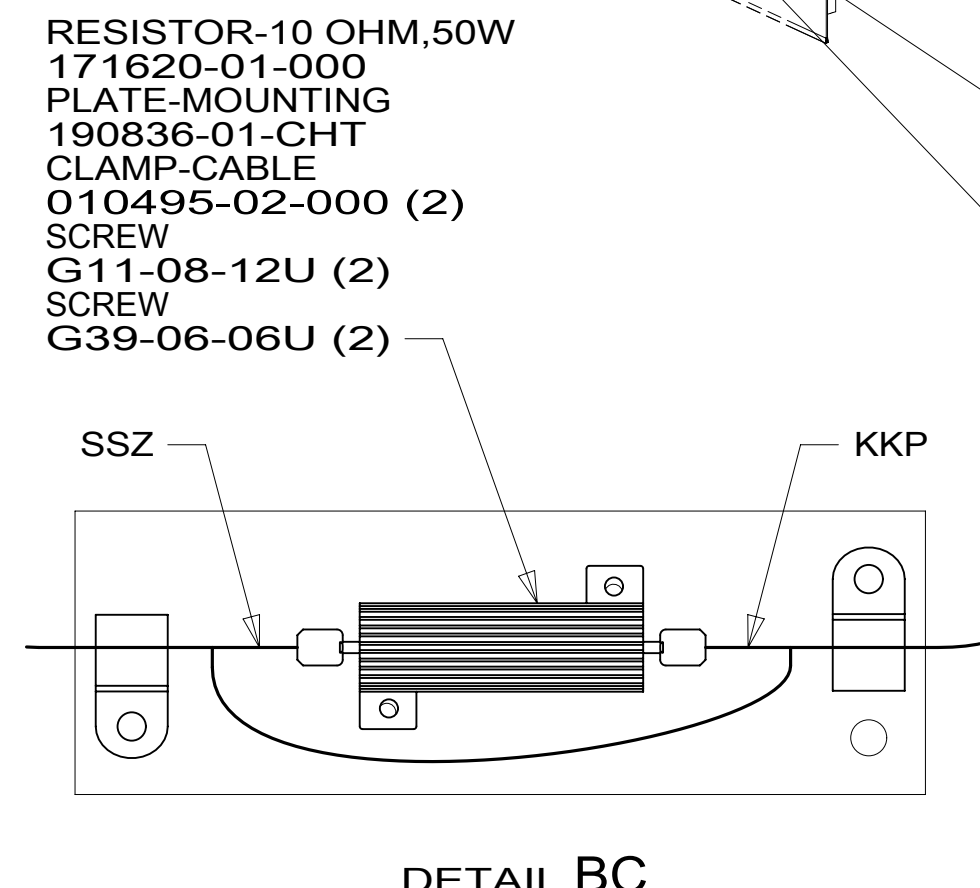
		COPYRIGHT 2014 WINNEBAGO INDUSTRIES, INC.	
DFTR	ORIG. DATE	ALL DIMENSIONS ARE IN MILLIMETERS	
CHKR		FIRST USED	
P.E.		15 A27B	
M.E.		UNSPECIFIED TOLERANCES ARE:	
DSNR		WHOLE DIM (X)	: 3
		ONE-PLACE (X.X)	: 1.5
		TWO-PLACE (X.XX)	: 0.50
		ANGLE	: 1°
		THIRD ANGLE PROJECTION	
DO NOT SCALE DRAWING		REFER TO ES0018 FOR FASTENER TIGHTENING GUIDELINES	
TITLE: WIRING INSTL-BODY, 12V			
SHEET 1 OF 6	PART NO. 187330	REV	
REF:	1	08-Jul-2015	

- NOTES:
- 5 DIMENSIONS FROM TUBES OF FRAME TO EDGE OF CONTROL MODULE.
 - 4 PLACE CROSS LOCATOR ON SENSORS OVER DIMPLES ON TANK.
 - 3 WIRE PASSES THROUGH FLOOR IN THIS AREA.
 2. ROUTE TANK SENSOR WIRES SO THEY DO NOT PASS OVER SENSORS. USE WIRE TIE MOUNT 155366-01-000 AND WIRE TIE 8343-01-000 AS NEEDED. TANK SURFACE MUST BE CLEANED USING ISOPROPYL ALCOHOL AND PRIMED WITH PRIMER 94.
 1. AT MINIMUM ALL WIRES TO BE SUPPORTED AND SECURED PER CODE REQUIREMENTS. USE CLAMP 10495 OR 10497 OR WIRE TIE 8343 OR 108046 AND SCREW G67-XX-XXX OR G56-XX-XXX AS APPROPRIATE FOR INSTALLATION.

187330



- NOTES:
- 5 ATTACH TO GROOVE IN SLIDEOUT MOLDING WITH TAPE 8363-01-000.
 - 4 PLACE CROSS LOCATOR ON SENSORS OVER DIMPLES ON TANK.
 - 3 WIRE PASSES THROUGH FLOOR IN THIS AREA.
 - 2 WIRE FROM ROOF.
 - 1. AT MINIMUM ALL WIRES TO BE SUPPORTED AND SECURED PER CODE REQUIREMENTS. USE CLAMP 10495 OR 10497 OR WIRE TIE 8343 OR 108046 AND SCREW G67-XX-XXX OR G56-XX-XXX AS APPROPRIATE FOR INSTALLATION.



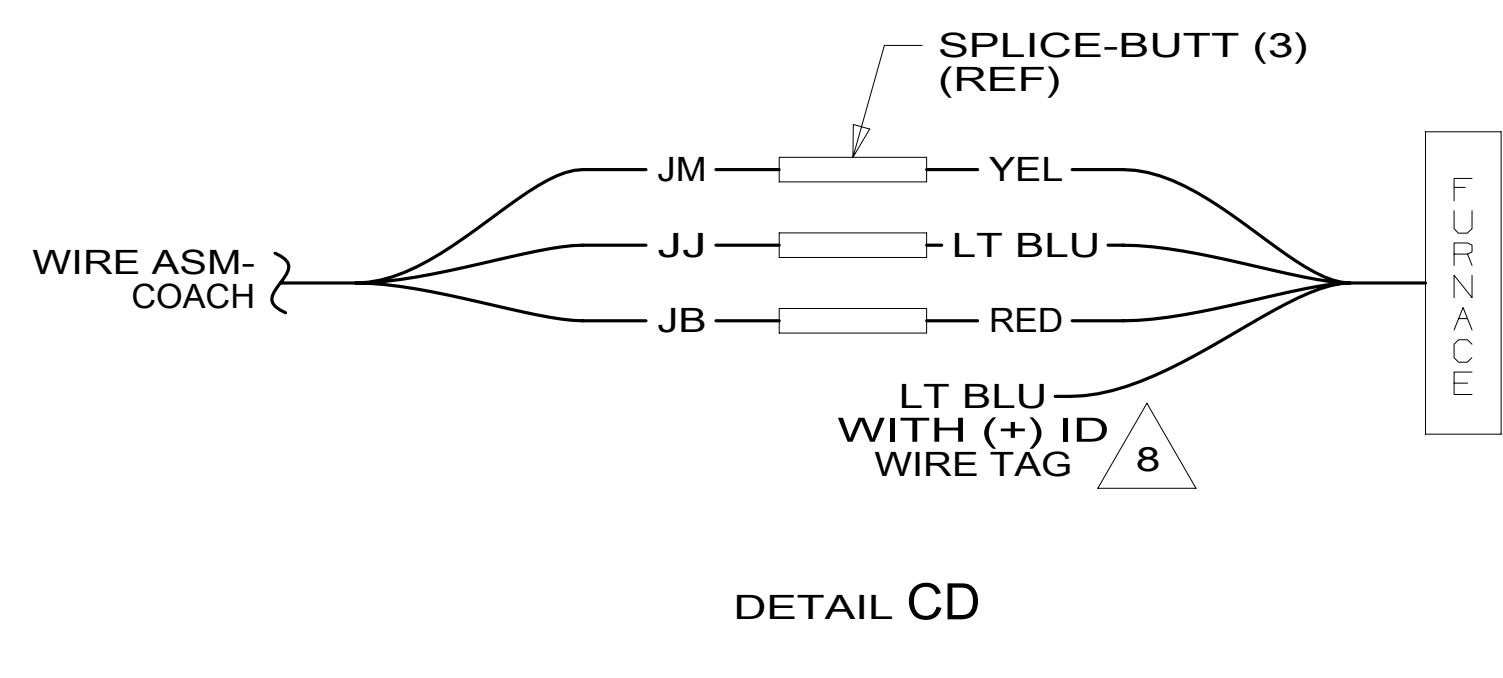
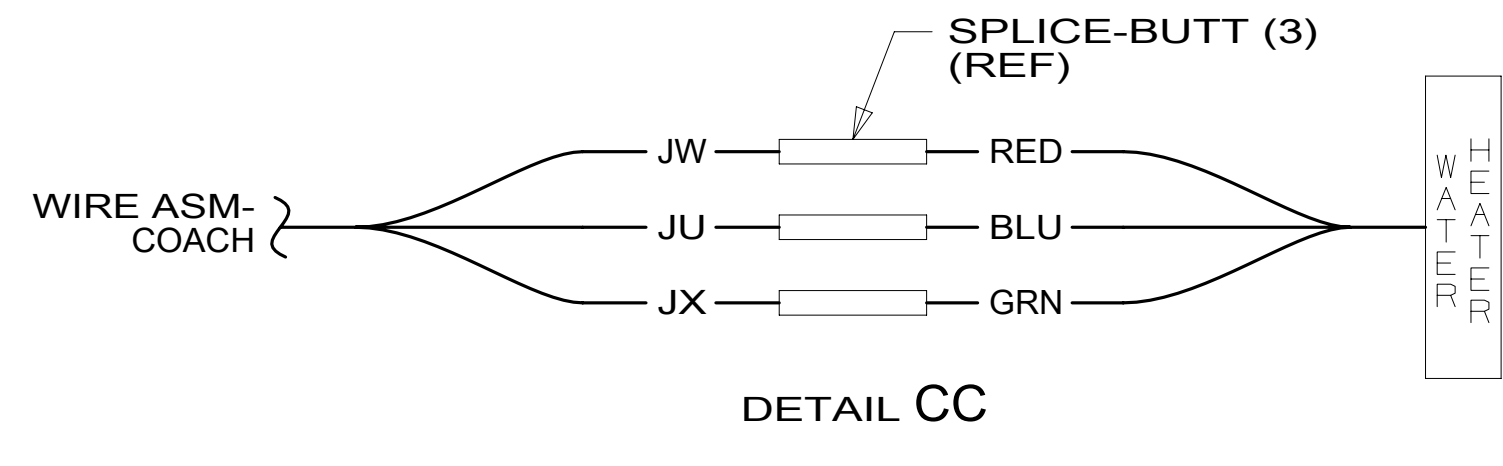
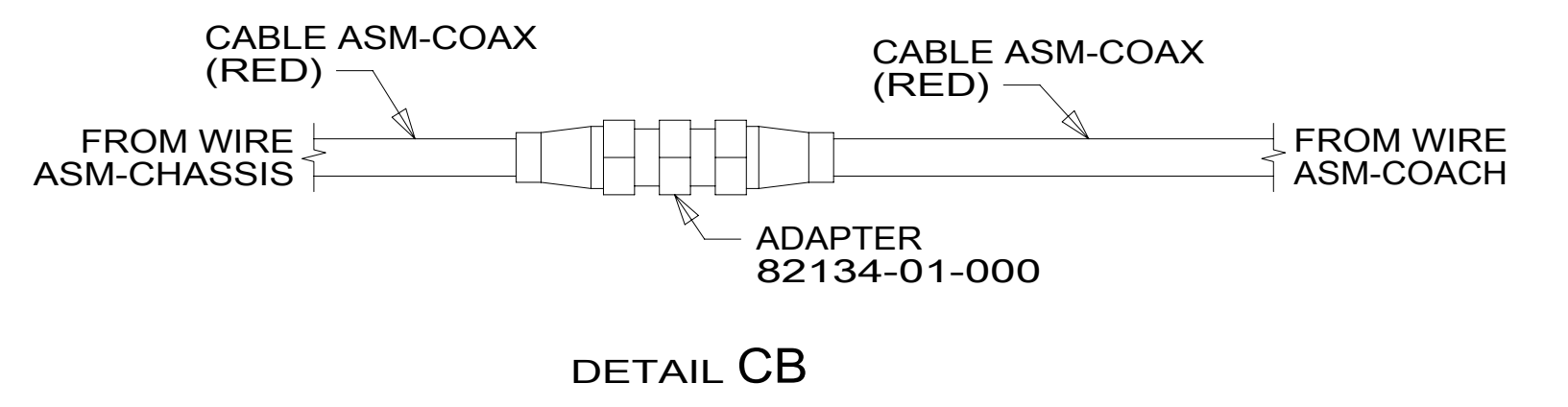
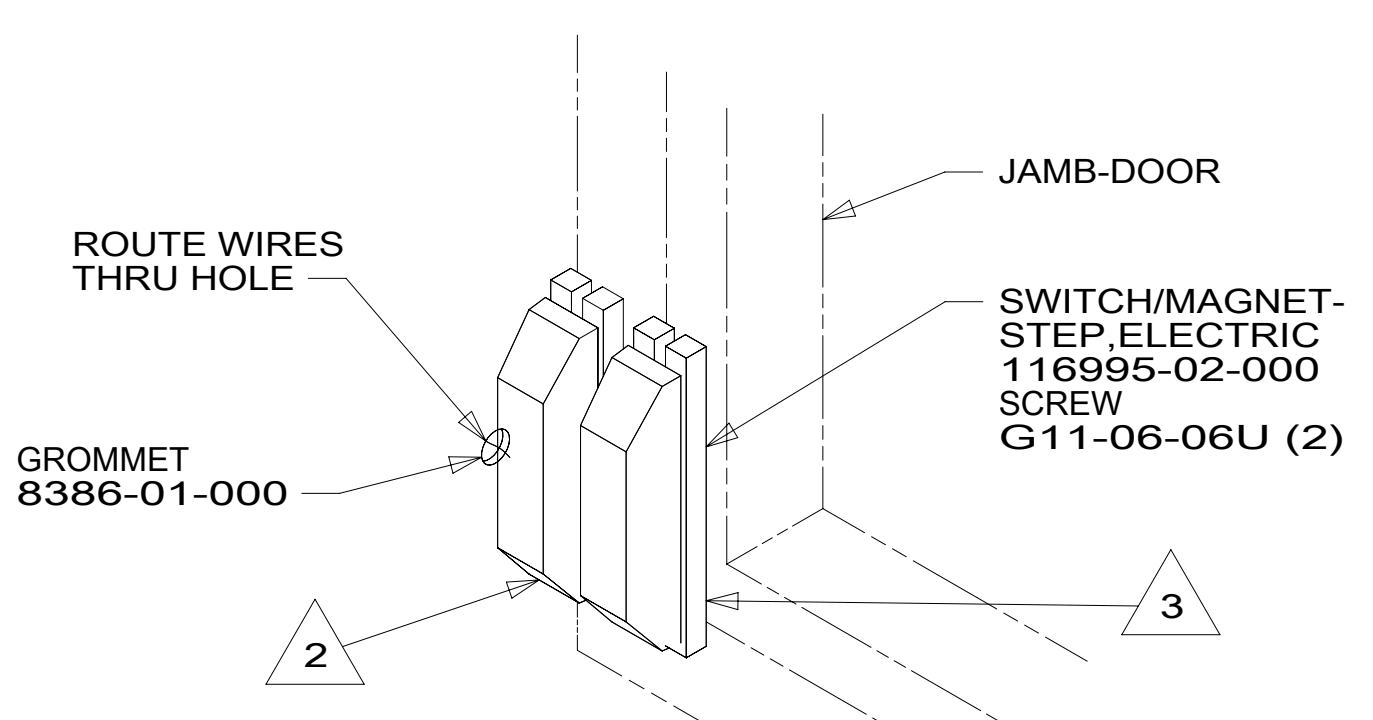
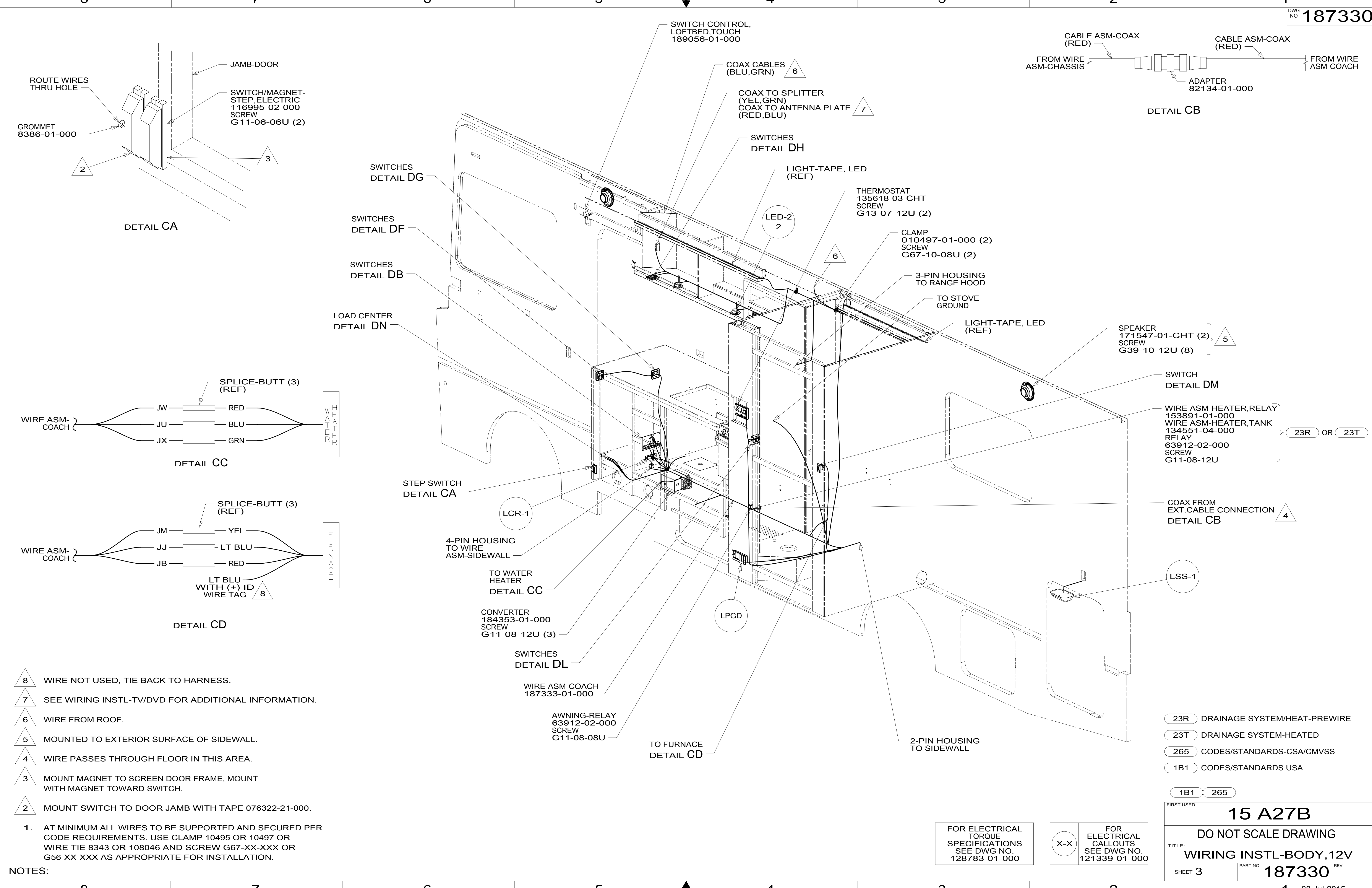
- 23R DRAINAGE SYSTEM/HEAT-PREWIRE
- 23T DRAINAGE SYSTEM-HEATED
- 265 CODES/STANDARDS-CSA/CMVSS
- 1B1 CODES/STANDARDS USA

FIRST USED		15 A27B	
DO NOT SCALE DRAWING			
WIRING INSTL-BODY, 12V			
SHEET 2	PART NO	187330	REV
			1 08-Jul-2015

FOR ELECTRICAL TORQUE SPECIFICATIONS SEE DWG NO. 128783-01-000

FOR ELECTRICAL CALLOUTS SEE DWG NO. 121339-01-000

*187330 *A



- 8 WIRE NOT USED, TIE BACK TO HARNESS.
- 7 SEE WIRING INSTL-TV/DVD FOR ADDITIONAL INFORMATION.
- 6 WIRE FROM ROOF.
- 5 MOUNTED TO EXTERIOR SURFACE OF SIDEWALL.
- 4 WIRE PASSES THROUGH FLOOR IN THIS AREA.
- 3 MOUNT MAGNET TO SCREEN DOOR FRAME, MOUNT WITH MAGNET TOWARD SWITCH.
- 2 MOUNT SWITCH TO DOOR JAMB WITH TAPE 076322-21-000.

1. AT MINIMUM ALL WIRES TO BE SUPPORTED AND SECURED PER CODE REQUIREMENTS. USE CLAMP 10495 OR 10497 OR WIRE TIE 8343 OR 108046 AND SCREW G67-XX-XXX OR G56-XX-XXX AS APPROPRIATE FOR INSTALLATION.

NOTES:

- 23R DRAINAGE SYSTEM/HEAT-PREWIRE
- 23T DRAINAGE SYSTEM-HEATED
- 265 CODES/STANDARDS-CSA/CMVSS
- 1B1 CODES/STANDARDS USA

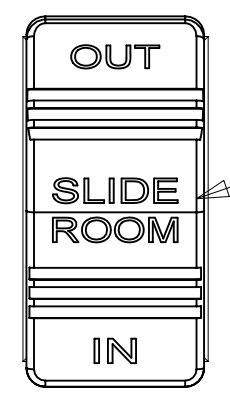
FIRST USED		15 A27B	
DO NOT SCALE DRAWING			
TITLE: WIRING INSTL-BODY, 12V			
SHEET 3	PART NO	187330	
		REV	08-Jul-2015

FOR ELECTRICAL TORQUE SPECIFICATIONS SEE DWG NO. 128783-01-000

FOR ELECTRICAL CALLOUTS SEE DWG NO. 121339-01-000

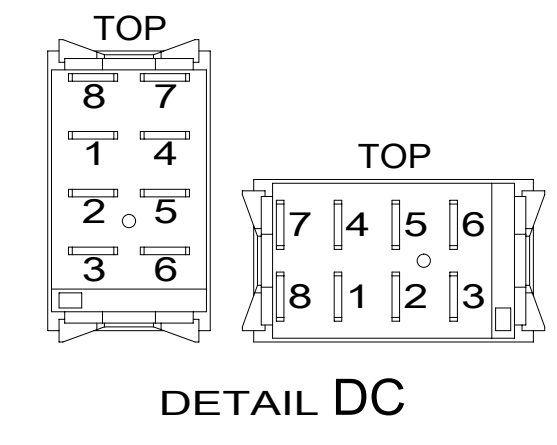
187330

DRIVER'S SIDE FRONT

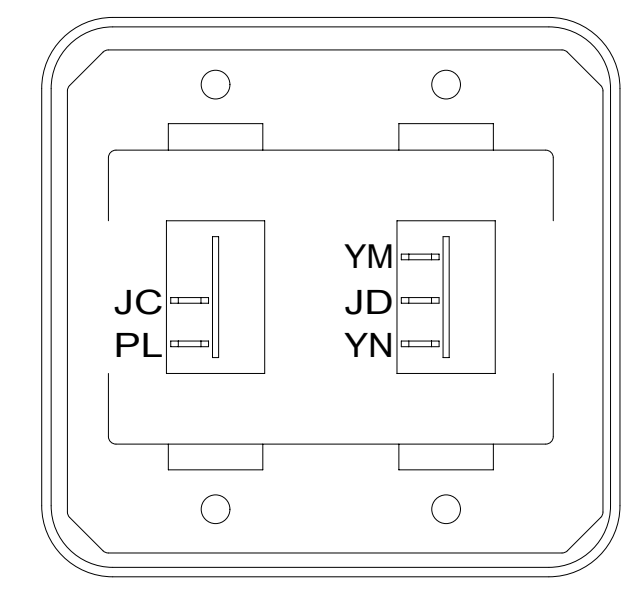


LABEL-SLIDEOUT, DRIVER, FRONT
163992-01-CHT

SWITCH
108357-07-000
ACTUATOR
108356-24-CHT
CIRCUITS
DR,DT,DU

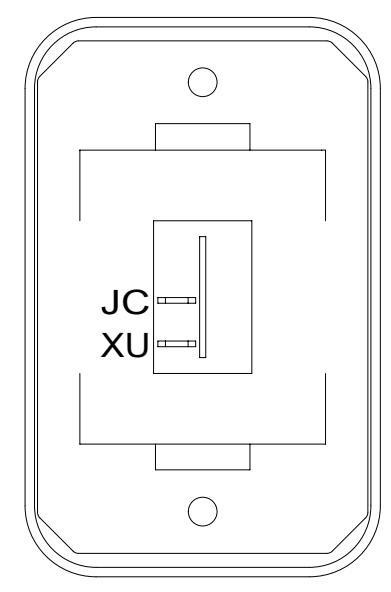


DETAIL DC



DETAIL DF

SWITCH-ROCKER
135740-01-CHT
135740-02-CHT
SWITCH-BASE
135741-01-CHT
SWITCH-BEZEL
135742-02-CHT
SCREW
G11-08-08U (4)

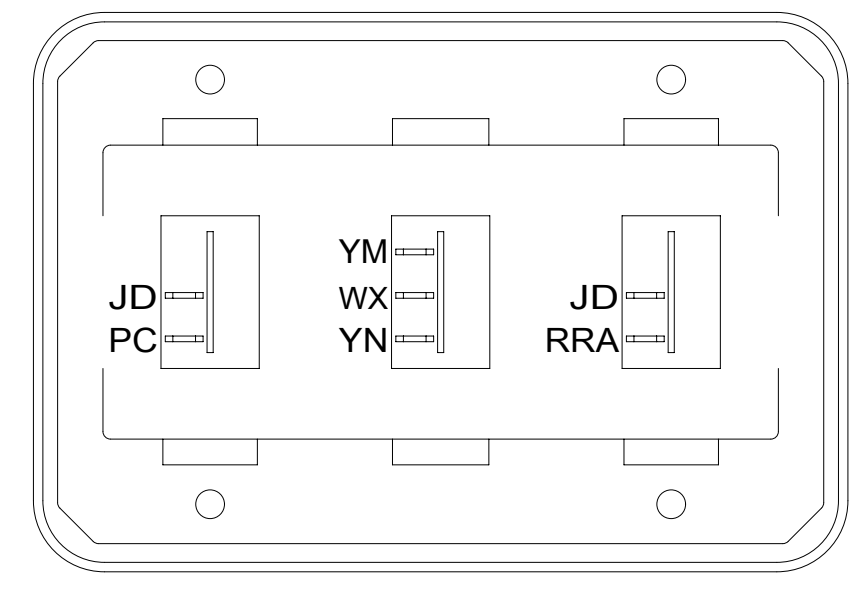


DETAIL DJ

SWITCH-ROCKER
135740-01-CHT
SWITCH-BASE
135741-01-CHT
SWITCH-BEZEL
135742-01-CHT
SCREW
G11-08-08U (2)

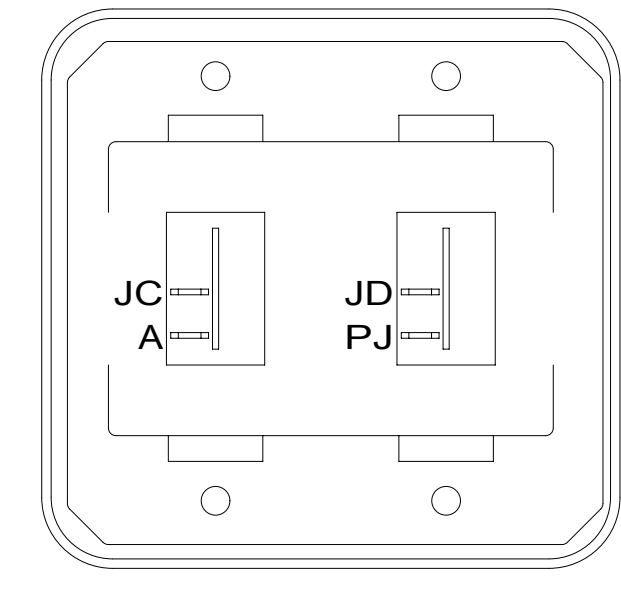
WARNING CRUSH HAZARD. Keep people and objects clear of the inside and the outside of the slideout room when operating. Failure to comply could result in death or serious injury.

DETAIL DA



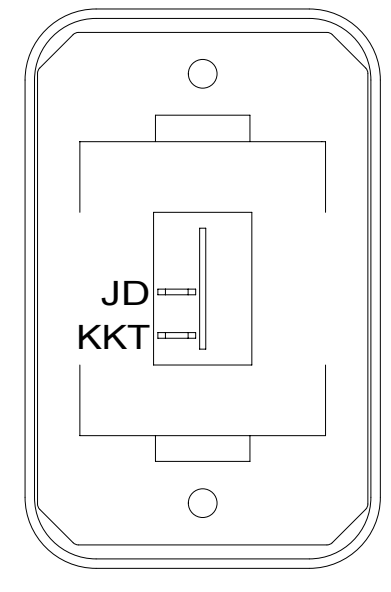
DETAIL DD

SWITCH-ROCKER
135740-01-CHT (2)
135740-02-CHT
SWITCH-BASE
135741-03-CHT
SWITCH-BEZEL
135742-03-CHT
SCREW
G11-08-08U (4)



DETAIL DG

SWITCH-ROCKER
135740-01-CHT (2)
SWITCH-BASE
135741-02-CHT
SWITCH-BEZEL
135742-02-CHT
SCREW
G11-08-08U (4)

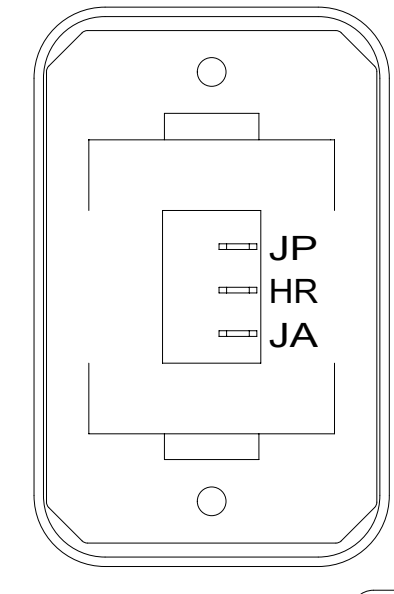


DETAIL DK

SWITCH-ROCKER
135740-01-CHT
SWITCH-BASE
135741-01-CHT
SWITCH-BEZEL
135742-01-CHT
SCREW
G11-08-08U (2)

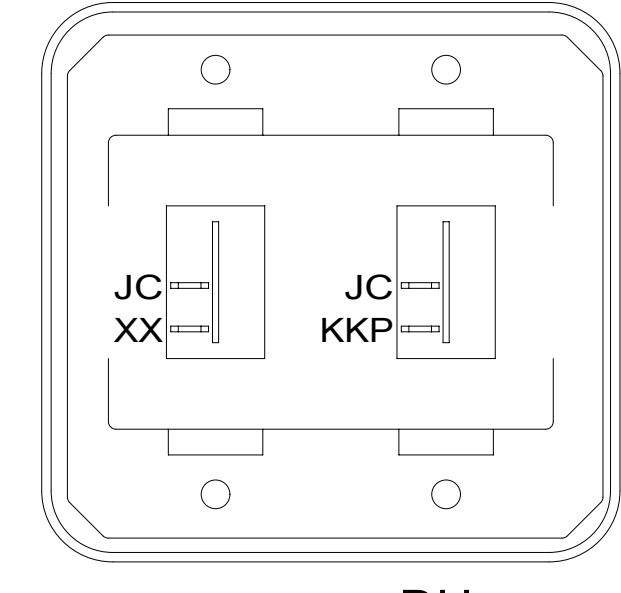
HOLDING TANK HEATER
TURN OFF When Not In Use
SEE OPERATORS MANUAL

LABEL-SWITCH,HEATER
134563-01-CHT



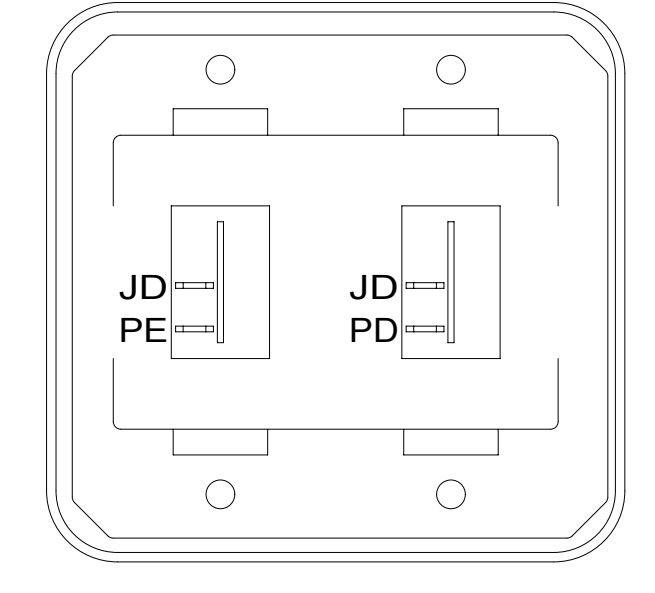
DETAIL DE 23T OR 23R

SWITCH-ROCKER
135740-06-CHT
SWITCH-BASE
135741-01-CHT
SWITCH-BEZEL
135742-01-CHT
SCREW
G11-08-08U (2)



DETAIL DH

SWITCH-ROCKER
135740-01-CHT (2)
SWITCH-BASE
135741-02-CHT
SWITCH-BEZEL
135742-02-CHT
SCREW
G11-08-08U (4)

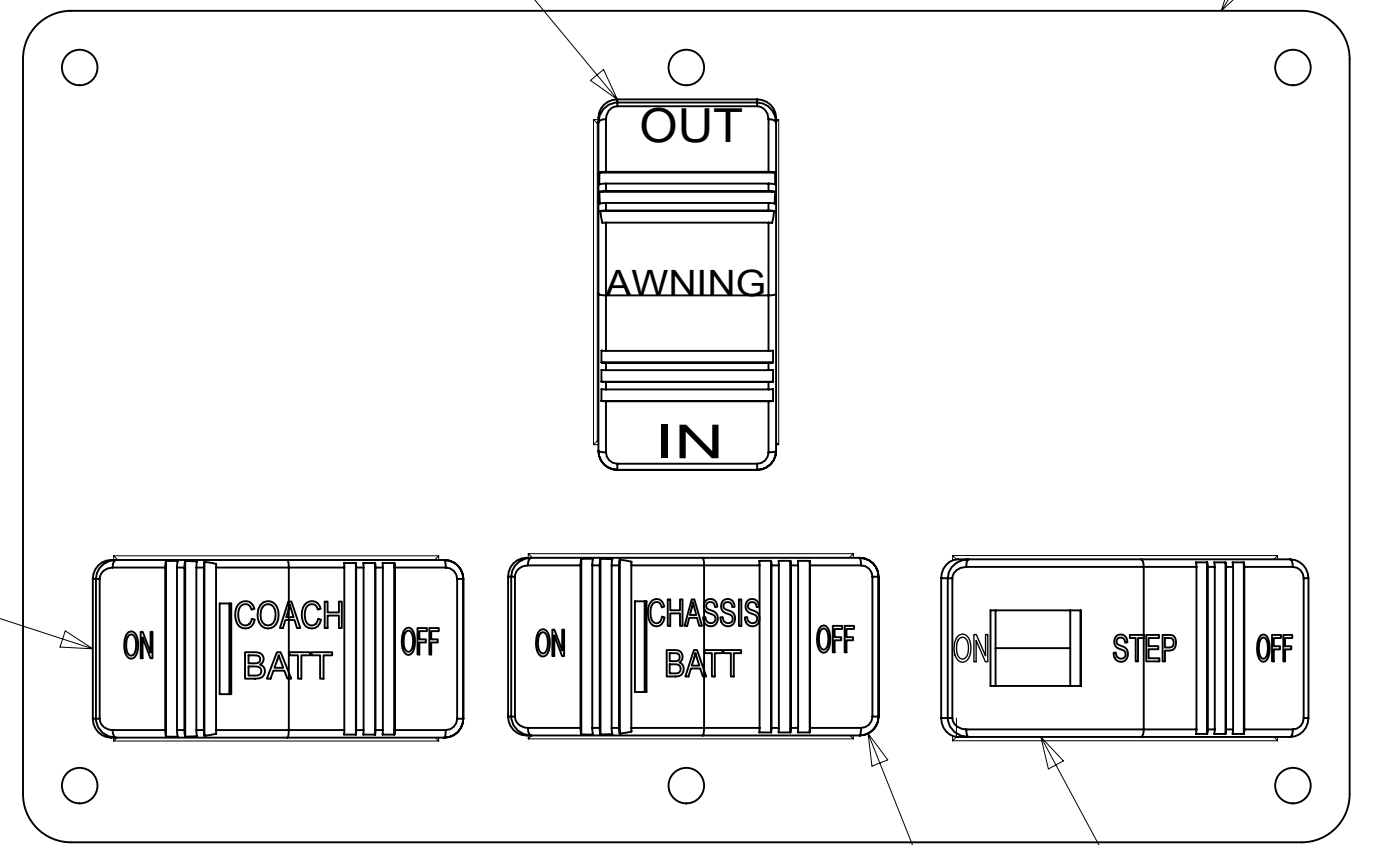


DETAIL DL

SWITCH-ROCKER
135740-01-CHT (2)
SWITCH-BASE
135741-02-CHT
SWITCH-BEZEL
135742-02-CHT
SCREW
G11-08-08U (4)

SWITCH-AWNING
108357-06-000
ACTUATOR-SWITCH
108356-12-CHT
CIRCUITS
FFD,FFR,FFE
FFE,JJR,FFD

PLATE-SWITCH
158431-15-CHT
SCREW
G11-06-10U (6)

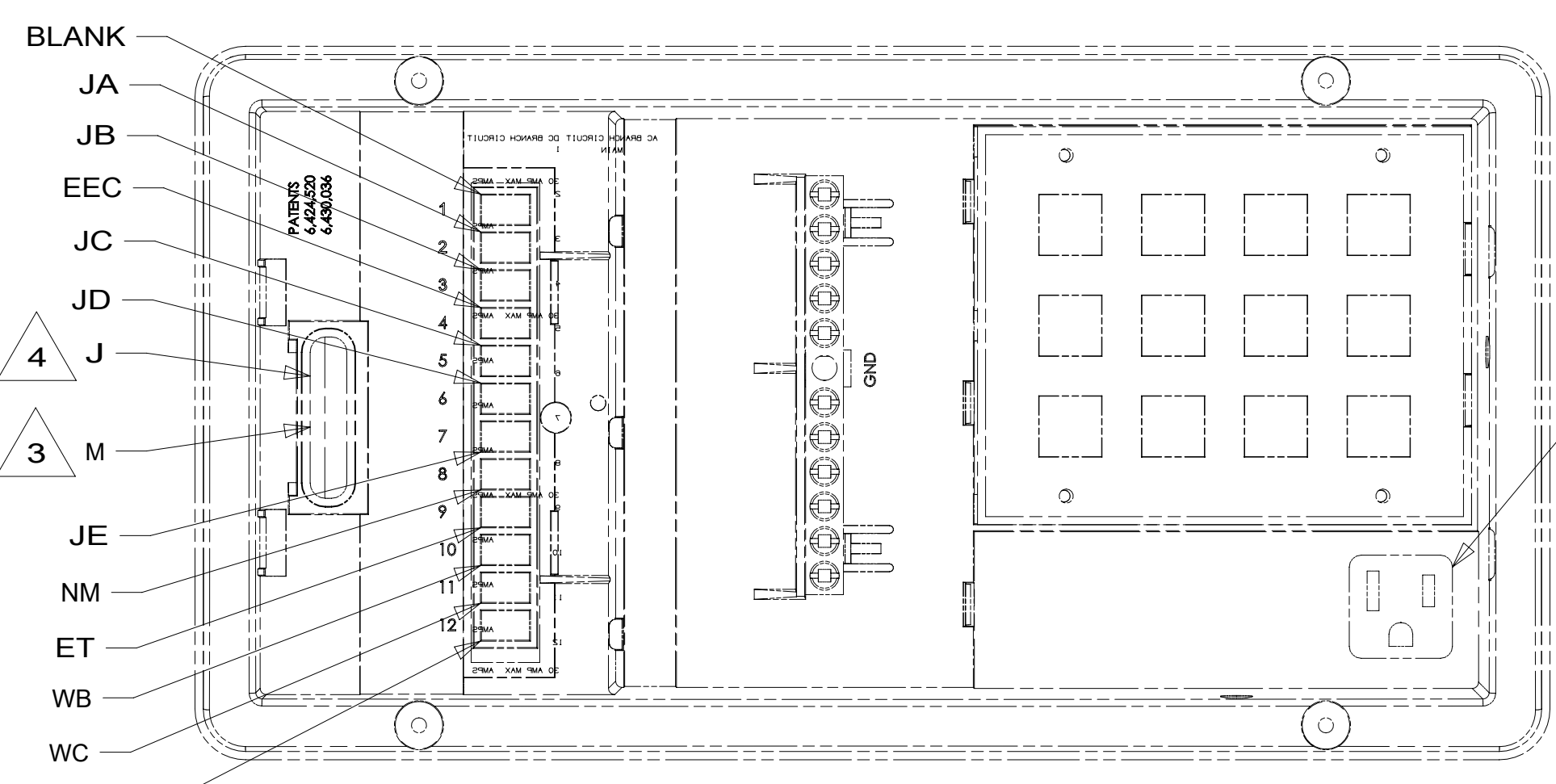


DETAIL DB 1

SWITCH-STEP
108357-19-000
CIRCUITS ER,ES

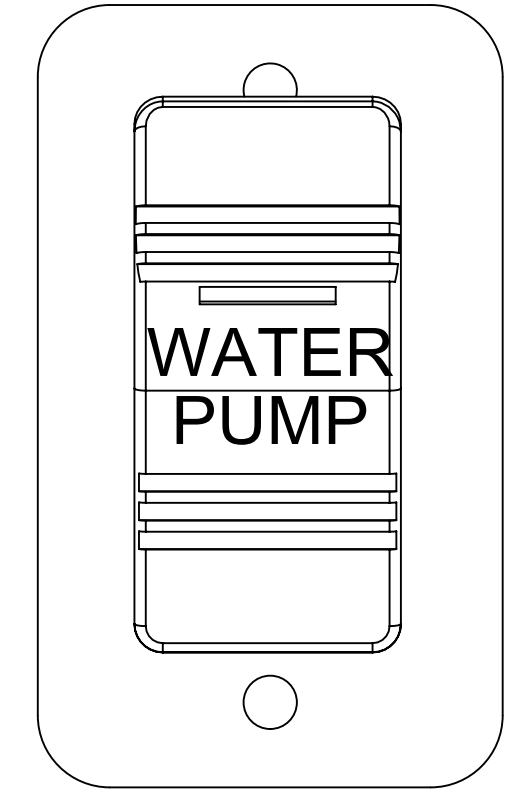
SWITCH-CHASSIS BATTERY
108357-18-000
ACTUATOR-SWITCH
108356-20-CHT
CIRCUITS
TTY,TTZ,MK,UUB,UUC
WIRE ASM-THERM
186796-01-000

SWITCH-COACH BATTERY
108357-18-000
ACTUATOR-SWITCH
108356-19-CHT
CIRCUITS
KF,LG,LJ,LH,WC
WIRE ASM-THERM
186796-01-000



DETAIL DN 2

PLUG CONVERTER POWER CORD INTO CONVENIENCE RECEPTACLE



DETAIL DM

SWITCH-PUMP
108357-15-000
ACTUATOR
108356-23-CHT
PLATE
98351-07-CHT
SCREW
G11-06-10U (2)

- NOTES:
- 4 CIRCUIT FROM WIRE ASM-CHASSIS.
 - 3 CIRCUIT FROM WIRE ASM-COACH.
 - 2 FOR REFERENCE ONLY, SEE LOAD CENTER/ATS ASM FOR ADDITIONAL INFORMATION.
 - 1 FOR SWITCH ORIENTATION SEE DETAIL DD.

FOR ELECTRICAL TORQUE SPECIFICATIONS SEE DWG NO. 128783-01-000

FOR ELECTRICAL CALLOUTS SEE DWG NO. 121339-01-000

- 23T DRAINAGE SYSTEM-HEATED
- 23R DRAINAGE SYSTEM/HEAT-PREWIRE
- 265 CODES/STANDARDS-CSA/CMVSS
- 1B1 CODES/STANDARDS USA

FIRST USED		15 A27B	
DO NOT SCALE DRAWING			
TITLE: WIRING INSTL-BODY, 12V			
SHEET 4	PART NO	187330	REV
		08-Jul-2015	

187330

8

7

6

5

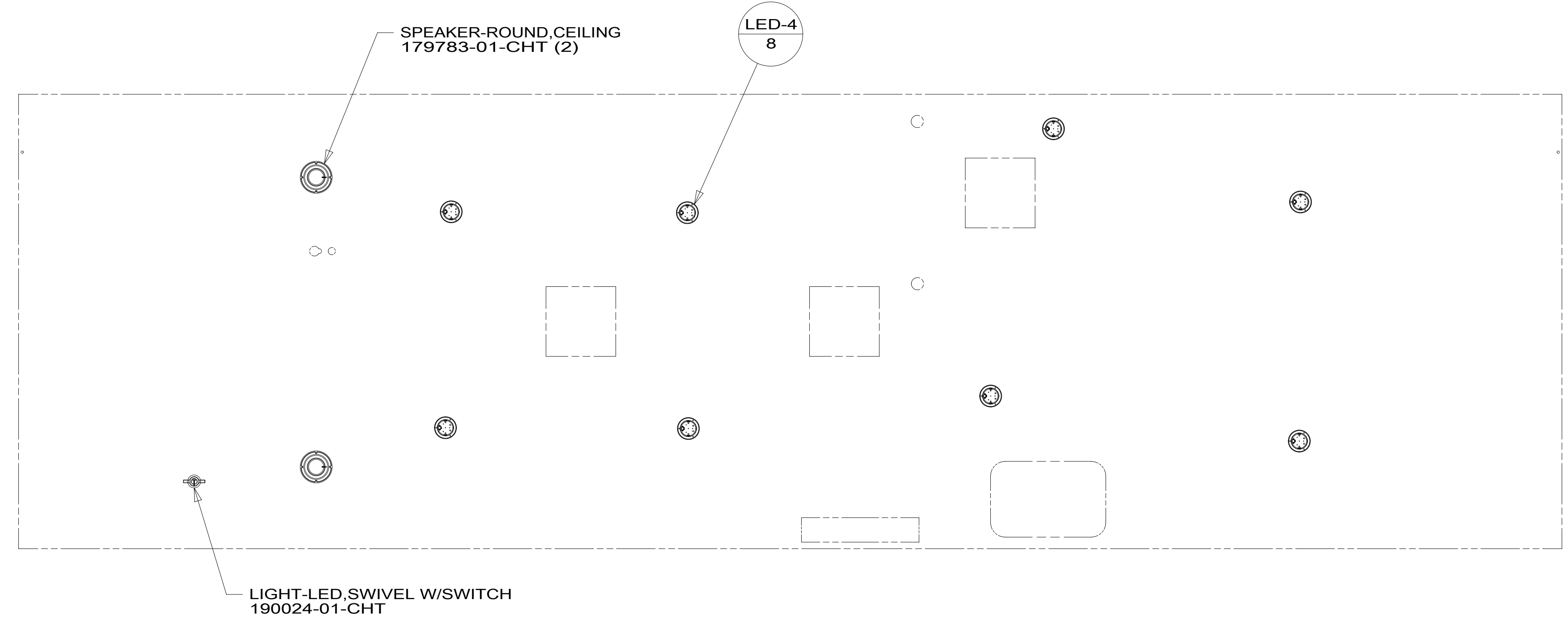
4

3

2

1

1



SPEAKER-ROUND, CEILING
179783-01-CHT (2)

LED-4
8

LIGHT-LED, SWIVEL W/SWITCH
190024-01-CHT

D

D

C

C

B

B

A

A

8

7

6

5

4

3

2

1

1

FOR ELECTRICAL
TORQUE
SPECIFICATIONS
SEE DWG NO.
128783-01-000

FOR
ELECTRICAL
CALLOUTS
SEE DWG NO.
121339-01-000

265 CODES/STANDARDS-CSA/CMVSS

1B1 CODES/STANDARDS USA

1B1 265

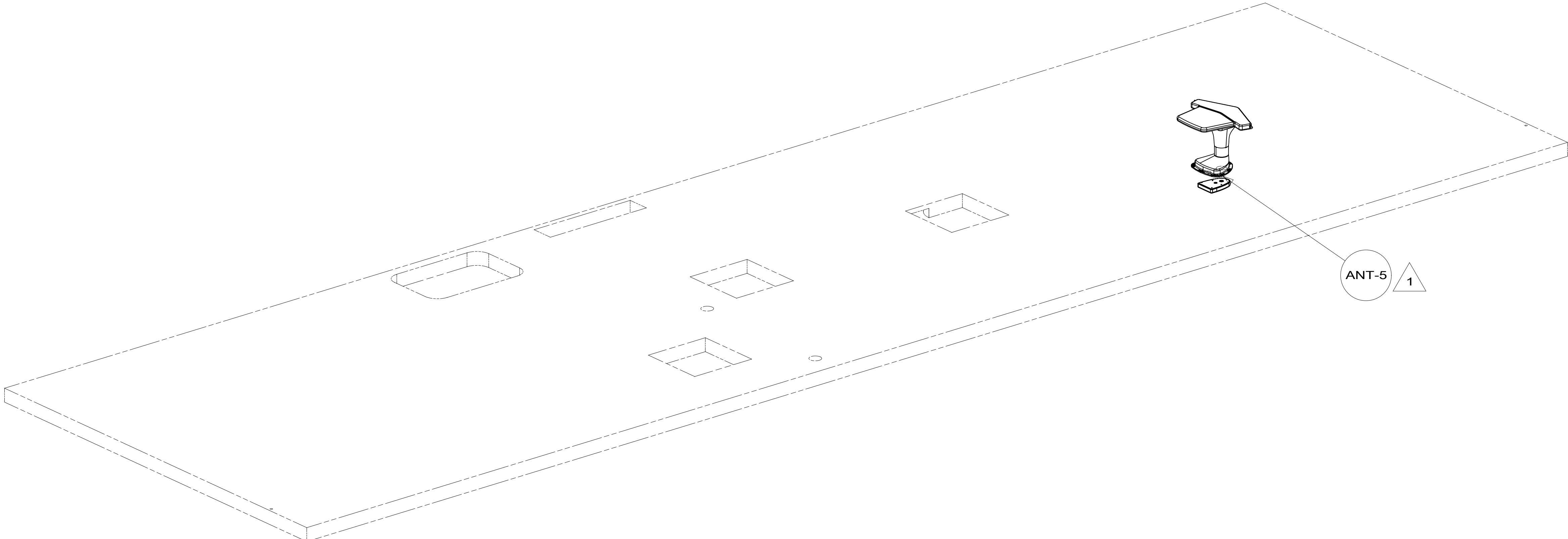
FIRST USED
15 A27B

DO NOT SCALE DRAWING

TITLE:
WIRING INSTL-BODY, 12V

SHEET 5 PART NO **187330** REV

*187330 *A



8

7

6

5

4

3

2

1

D

D

C

C

B

B

A

A



NOTES:

1 SEE ANTENNA INSTALLATION MANUAL FOR CORRECT INSTALLATION PROCEDURE.

FOR ELECTRICAL TORQUE SPECIFICATIONS SEE DWG NO. 128783-01-000

FOR ELECTRICAL CALLOUTS SEE DWG NO. 121339-01-000

265 CODES/STANDARDS-CSA/CMVSS

1B1 CODES/STANDARDS USA

1B1 265

FIRST USED **15 A27B**

DO NOT SCALE DRAWING

TITLE: **WIRING INSTL-BODY, 12V**

SHEET 6 PART NO **187330** REV

*187330 *A