



**DANGER**

**Danger of electrical shock, burns or death.** Always remove all power sources before attempting any repair, service or diagnostic work. Power can be present from shore power, generator, inverter or battery. All power sources must be disabled and secured before performing any service.



**CAUTION**

If you lack the skills, tools or equipment to perform diagnostic or repair work leave such work to an authorized Winnebago Industries dealer or other qualified shop.

DRAWING NO.	MODEL	SHEET
187248-01	524G	1,2
187248-02	524J	1,2
187248-03	524M	1,3
187248-04	524V	1,2

RELEASE	REV/DATE	DWG NO	187248
REV ZONE	REVISION RECORD	DATE	DFT-ORIG

	524M	524J	524G	524V
CABLE ASM-STARTER (RED)	141415-37-013	141415-37-013	141415-37-013	141415-37-013
CABLE ASM-COACH BATTERY (YEL)	141415-52-070	141415-52-043	141415-52-043	141415-52-043
CABLE ASM-COACH BATTERY GND (BLK)	133567-12-012	133567-12-006	133567-12-006	133567-12-006
CABLE ASM-GENERATOR (GRN) (321)	141415-42-077	141415-42-077	141415-42-077	141415-42-077
CABLE ASM-GENERATOR GND (BLK) (321)	133566-12-017	133566-12-017	133566-12-017	133566-12-017
CABLE ASM-GENERATOR (GRN) (33F)	141416-42-070	141416-42-070	141416-42-070	141416-42-070
CABLE ASM-GENERATOR GND (BLK) (33F)	133567-12-011	133567-12-011	133567-12-011	133567-12-011
CABLE ASM-INVERTOR FUSE (ORG) (401)	141415-62-005	141415-62-003	141415-62-003	141415-62-003
CABLE ASM-INVERTOR (ORG) (401)	141415-62-035	141415-62-024	141415-62-024	141415-62-024
CABLE ASM-INVERTOR GND (BLK) (401)	133566-12-009	133566-12-009	133566-12-009	133566-12-009

- (401) INVERTER-DC/AC, 1000 WATT
- (33F) GEN-3.2 KW ONAN DIESEL
- (321) GENERATOR PREP KIT
- (265) CODES/STANDARDS-CSA/CMVSS
- (1B1) CODES/STANDARDS USA

**WINNEBAGO** COPYRIGHT 2014 WINNEBAGO INDUSTRIES, INC.

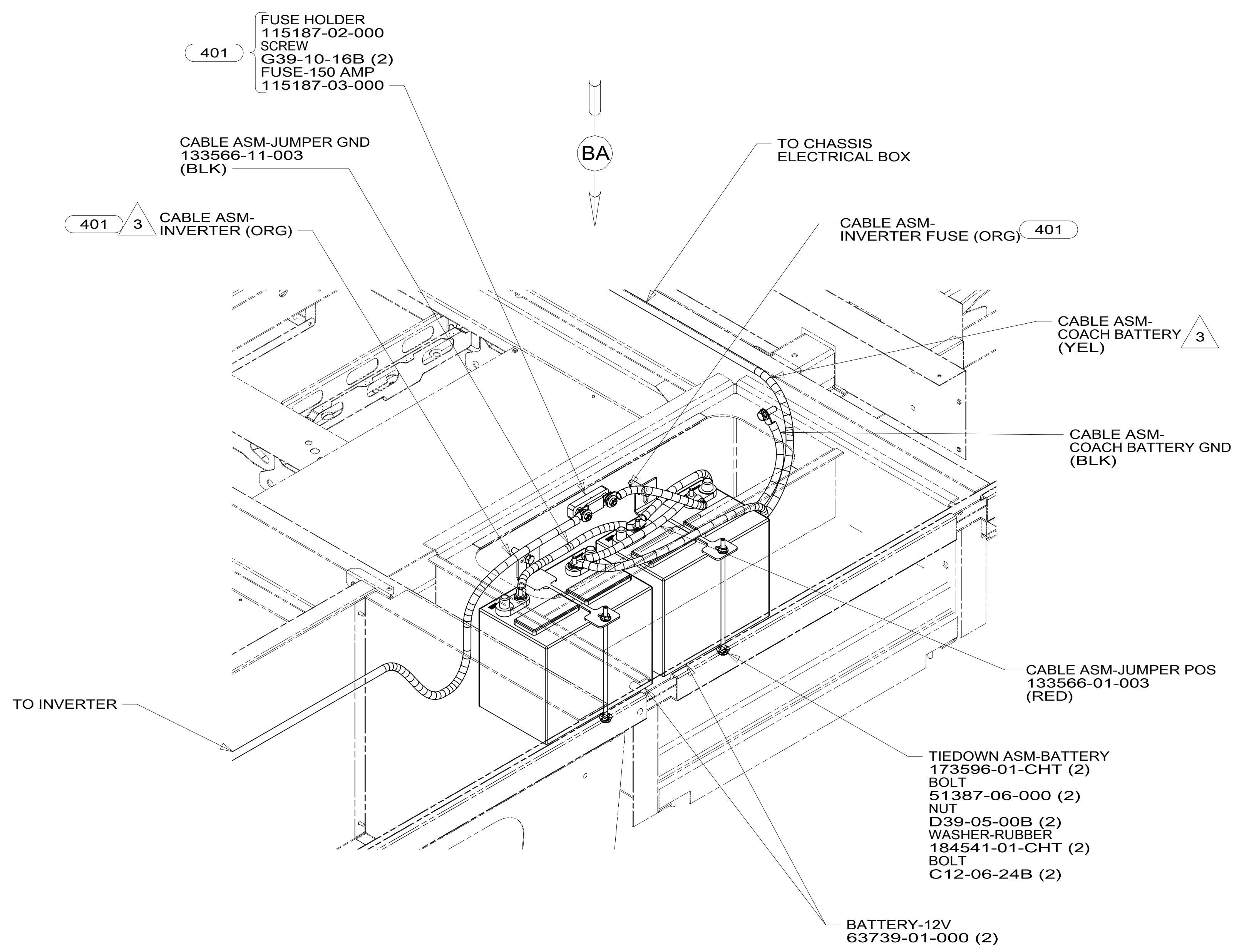
DFT-ORIG	ORIG. DATE
CHKR	ALL DIMENSIONS ARE IN MILLIMETERS
P.E.	
M.E.	FIRST USED
DSNR	15 500-SERIES
UNSPECIFIED TOLERANCES ARE:	
WHOLE DIM (X) :	MATERIAL:
ONE-PLACE (X.X) :	
TWO-PLACE (X.XX) :	
ANGLE :	
THIRD ANGLE PROJECTION	
DO NOT SCALE DRAWING	REFER TO ES0018 FOR FASTENER TIGHTENING GUIDELINES
TITLE: BATTERY INSTL	
SHEET 1 OF 3	PART NO 187248
REF:	1 08-Jul-2015

- NOTES:
- SEE WIRING INSTL-CHASSIS FOR ADDITIONAL INFORMATION FOR ROUTING CABLES.
  - BATTERY CABLES ARE NOT TO BE ROUTED OVER BATTERY FILL CAPS.

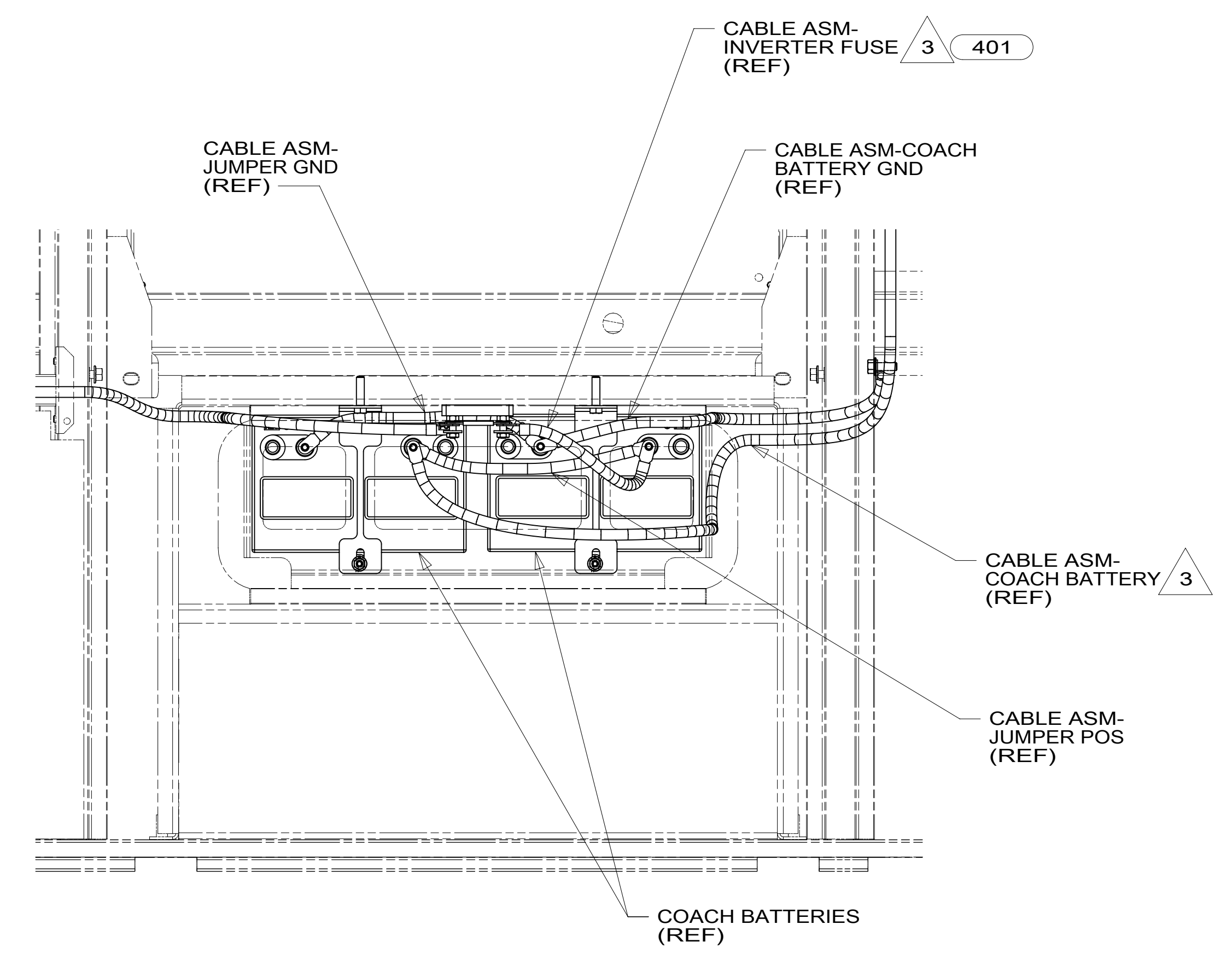
FOR ELECTRICAL TORQUE SPECIFICATIONS SEE DWG NO. 128783-01-000

FOR ELECTRICAL CALLOUTS SEE DWG NO. 121339-01-000

\*187248 \*A



BATTERY BOX



VIEW BA

- NOTES:
- 3 SEE WIRING INSTL-CHASSIS FOR ROUTING OF CABLE.
  - 2. BATTERY CABLES ARE NOT TO BE ROUTED OVER BATTERY FILL CAPS.
  - 1. CHASSIS FOR ADDITIONAL INFORMATION FOR ROUTING CABLES.

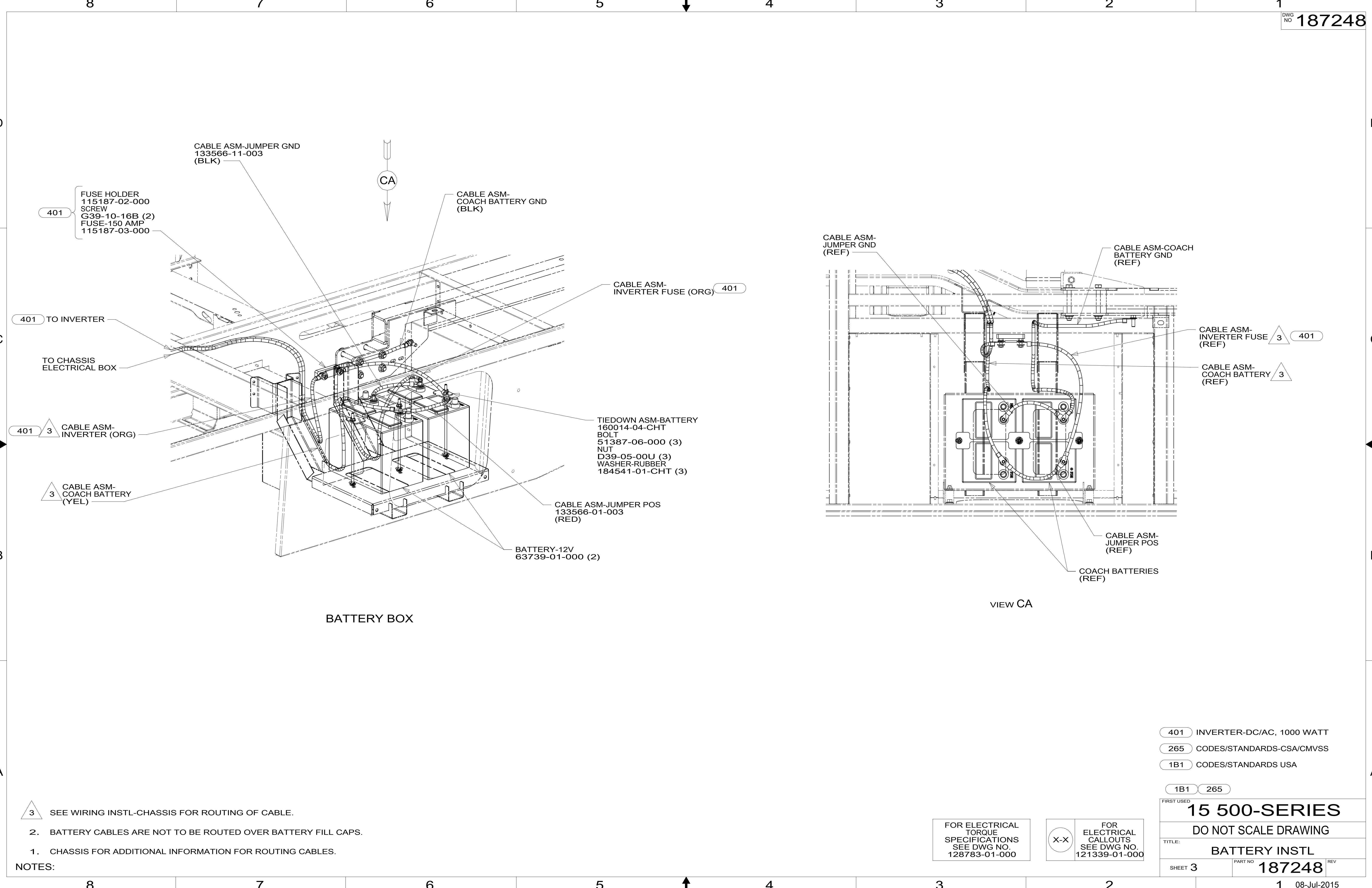
- 401 INVERTER-DC/AC, 1000 WATT
- 265 CODES/STANDARDS-CSA/CMVSS
- 1B1 CODES/STANDARDS USA

FIRST USED	
<b>15 500-SERIES</b>	
DO NOT SCALE DRAWING	
TITLE: <b>BATTERY INSTL</b>	
SHEET 2	PART NO <b>187248</b> REV
08-Jul-2015	

FOR ELECTRICAL TORQUE SPECIFICATIONS SEE DWG NO. 128783-01-000

FOR ELECTRICAL CALLOUTS SEE DWG NO. 121339-01-000

\*187248\*



BATTERY BOX

VIEW CA

- NOTES:
- 3 SEE WIRING INSTL-CHASSIS FOR ROUTING OF CABLE.
  - 2. BATTERY CABLES ARE NOT TO BE ROUTED OVER BATTERY FILL CAPS.
  - 1. CHASSIS FOR ADDITIONAL INFORMATION FOR ROUTING CABLES.

- 401 INVERTER-DC/AC, 1000 WATT
- 265 CODES/STANDARDS-CSA/CMVSS
- 1B1 CODES/STANDARDS USA

1B1 265

FOR ELECTRICAL TORQUE SPECIFICATIONS SEE DWG NO. 128783-01-000

FOR ELECTRICAL CALLOUTS SEE DWG NO. 121339-01-000

FIRST USED	
<b>15 500-SERIES</b>	
DO NOT SCALE DRAWING	
TITLE: <b>BATTERY INSTL</b>	
SHEET 3	PART NO <b>187248</b> REV

\*187248\*