



DANGER

Danger of electrical shock, burns or death. Always remove all power sources before attempting any repair, service or diagnostic work. Power can be present from shore power, generator, inverter or battery. All power sources must be disabled and secured before performing any service.

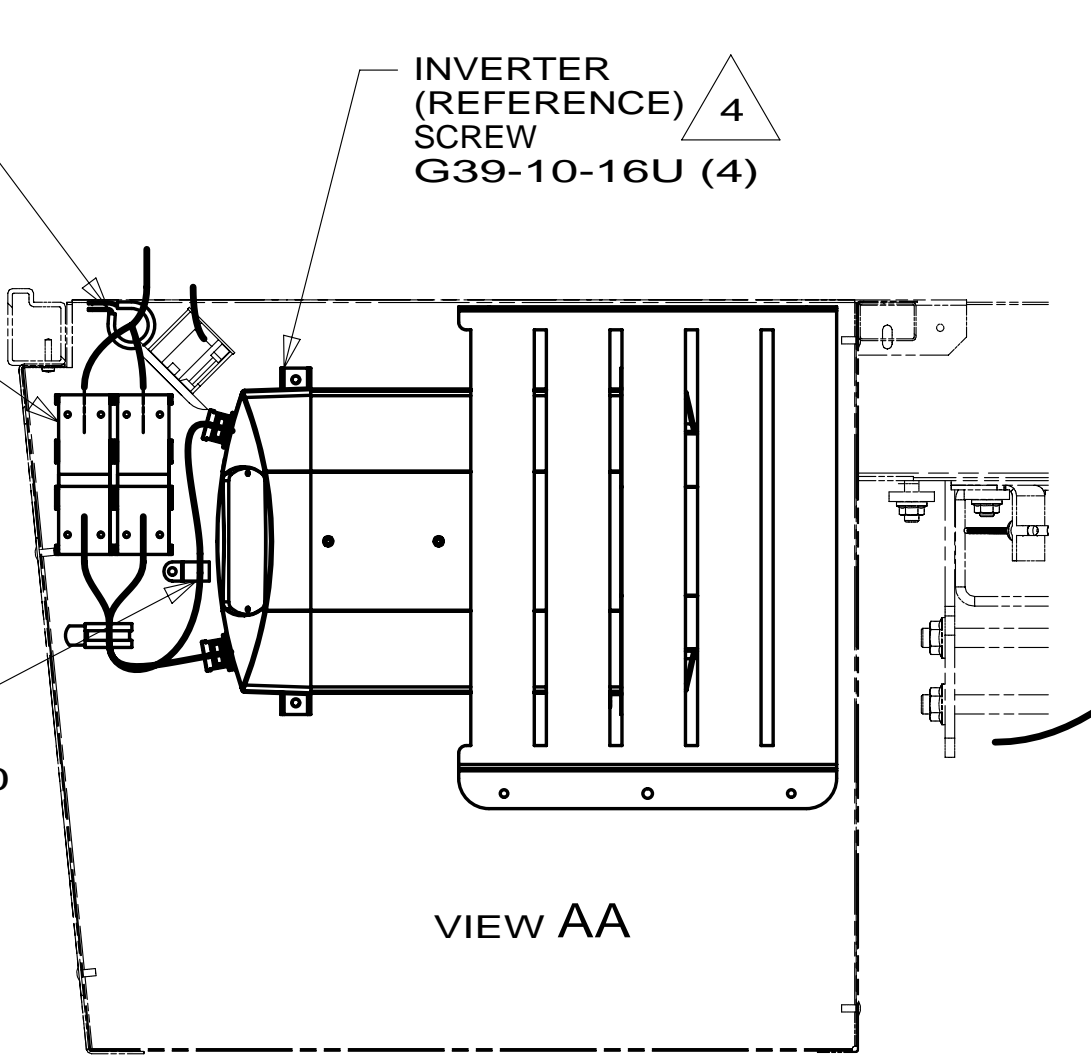
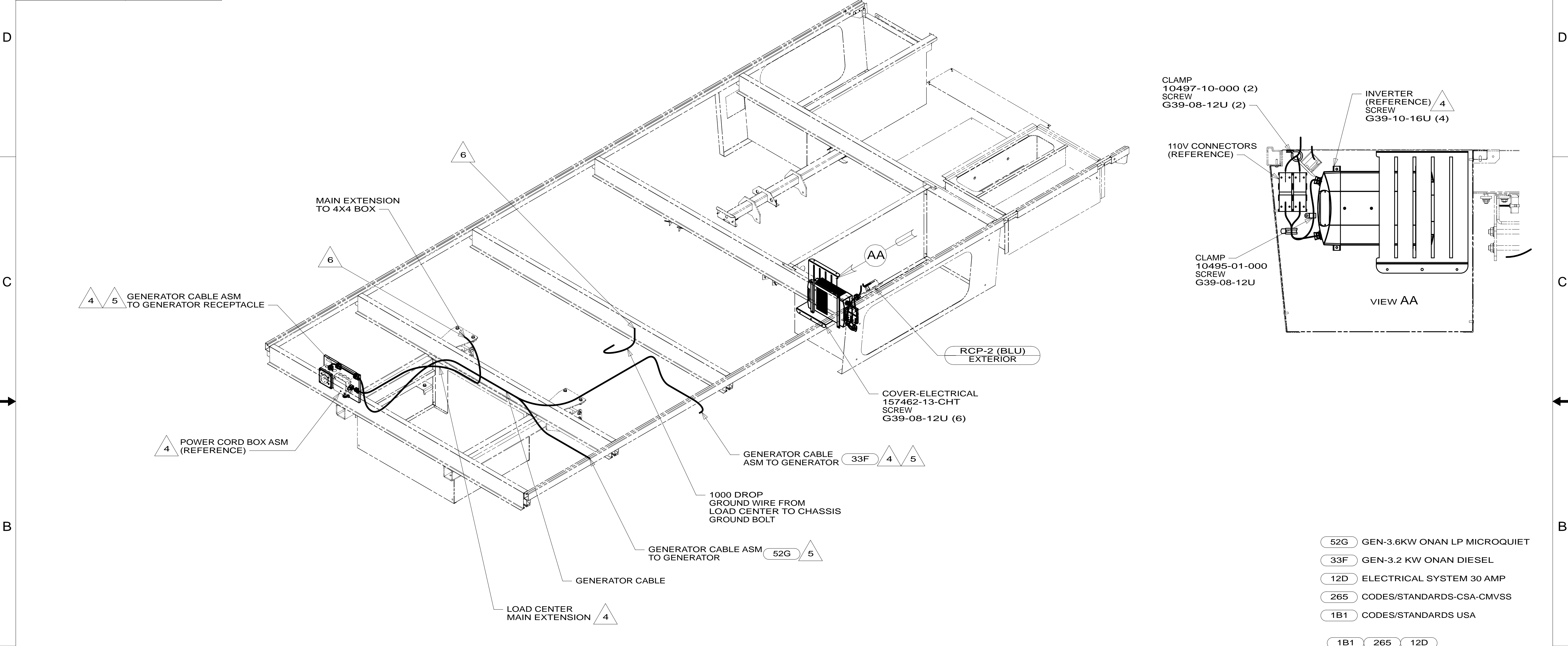


CAUTION

If you lack the skills, tools or equipment to perform diagnostic or repair work leave such work to an authorized Winnebago Industries dealer or other qualified shop.

DRAWING NO.	FEATURE
186250-01	-----
186250-11	1B1 12D
186250-15	265 12D

RELEASE	REV/DATE	DWG NO	186250
REV/ZONE	REVISION RECORD	DATE	DFTR-ORIG



- 6 WIRES ROUTED THROUGH FLOOR IN THIS AREA.
- 5 SEE GENERATOR INSTL FOR ADDITIONAL INFORMATION.
- 4 SEE LOAD CENTER/ATS ASM FOR ADDITIONAL INFORMATION.

3. ALL GROUND WIRES TO BE COVERED WITH TUBING 8041-02-000.
2. ALL 110V WIRE ARE TO BE CLAMPED WITH CLAMP 10497-05-000 WITHIN 200MM OF OUTLET BOXES, USE SCREW G67-10-12U.

1. ALL WIRES TO BE SECURED WITH CLAMP 10495-01-000 OR CLIP 80734-01-000 EVERY 600MM. USE SCREW G67-10-12U UNLESS OTHERWISE SPECIFIED.

NOTES:

FOR ELECTRICAL
TORQUE
SPECIFICATIONS
SEE DWG NO.
128783-01-000

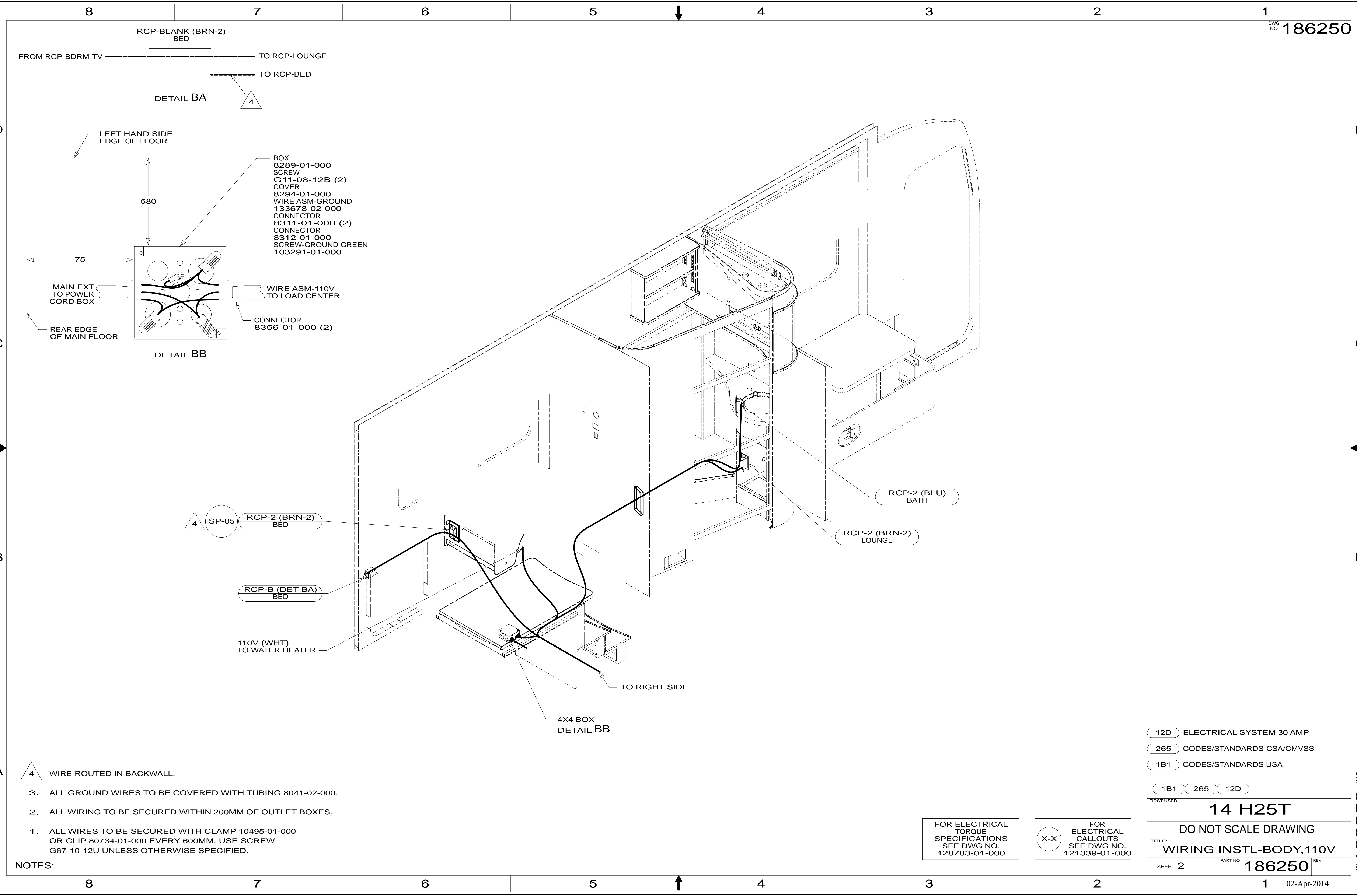
FOR
ELECTRICAL
CALLOUTS
SEE DWG NO.
121339-01-000

- 52G GEN-3.6KW ONAN LP MICROQUIET
- 33F GEN-3.2 KW ONAN DIESEL
- 12D ELECTRICAL SYSTEM 30 AMP
- 265 CODES/STANDARDS-CSA-CMVSS
- 1B1 CODES/STANDARDS USA

1B1 265 12D

WINNEBAGO INDUSTRIES		COPYRIGHT 2014 WINNEBAGO INDUSTRIES, INC.	
DFTR	ORIG. DATE		
CHKR	ALL DIMENSIONS ARE IN MILLIMETERS		
P.E.			
M.E.	FIRST USED		
DSNR	14 H25T		
UNSPECIFIED TOLERANCES ARE:		MATERIAL:	
WHOLE DIM (X) ± 3			
ONE-PLACE (X.X) ± 1.5			
TWO-PLACE (X.XX) ± 0.50			
ANGLE ± 1°			
THIRD ANGLE PROJECTION			
DO NOT SCALE DRAWING		REFER TO ES0018 FOR FASTENER TIGHTENING GUIDELINES	
TITLE: WIRING INSTL-BODY,110V			
SHEET 1 OF 4	PART NO	186250	REV
REF:		1	02-Apr-2014

* 186250 *



8 7 6 5 4 3 2 1

RCP-BLANK (BRN-2) BED
FROM RCP-BDRM-TV TO RCP-LOUNGE
TO RCP-BED
DETAIL BA
4

LEFT HAND SIDE
EDGE OF FLOOR
580
75
MAIN EXT
TO POWER
CORD BOX
REAR EDGE
OF MAIN FLOOR
WIRE ASM-110V
TO LOAD CENTER
CONNECTOR
8356-01-000 (2)
DETAIL BB
BOX
8289-01-000
SCREW
G11-08-12B (2)
COVER
8294-01-000
WIRE ASM-GROUND
133678-02-000
CONNECTOR
8311-01-000 (2)
CONNECTOR
8312-01-000
SCREW-GROUND GREEN
103291-01-000

D
C
B
A

4 SP-05 RCP-2 (BRN-2) BED
RCP-B (DET BA) BED
110V (WHT) TO WATER HEATER
TO RIGHT SIDE
4X4 BOX
DETAIL BB
RCP-2 (BLU) BATH
RCP-2 (BRN-2) LOUNGE

4 WIRE ROUTED IN BACKWALL.
3. ALL GROUND WIRES TO BE COVERED WITH TUBING 8041-02-000.
2. ALL WIRING TO BE SECURED WITHIN 200MM OF OUTLET BOXES.
1. ALL WIRES TO BE SECURED WITH CLAMP 10495-01-000 OR CLIP 80734-01-000 EVERY 600MM. USE SCREW G67-10-12U UNLESS OTHERWISE SPECIFIED.

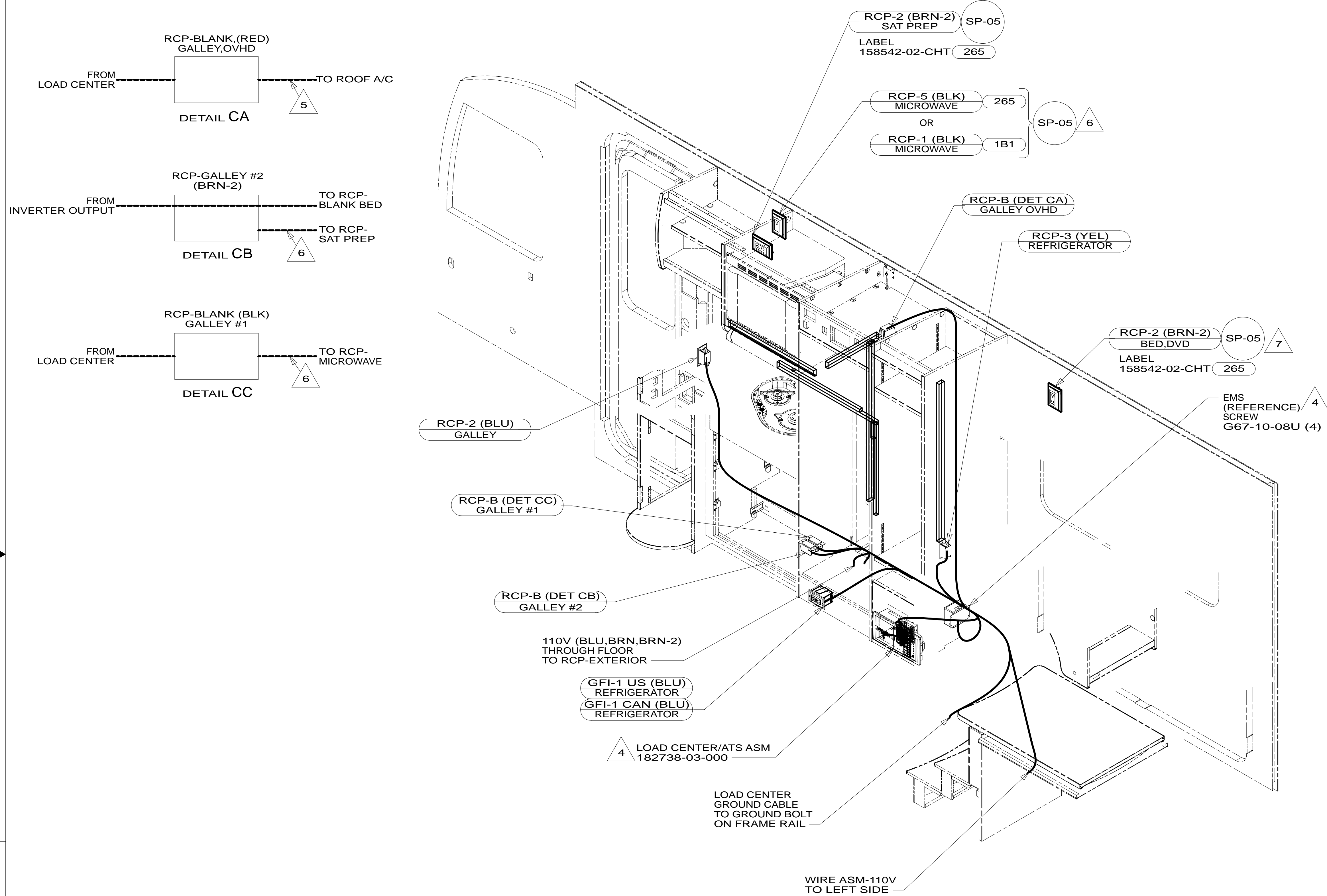
NOTES:





FOR ELECTRICAL TORQUE SPECIFICATIONS SEE DWG NO. 128783-01-000
FOR ELECTRICAL CALLOUTS SEE DWG NO. 121339-01-000

12D ELECTRICAL SYSTEM 30 AMP
265 CODES/STANDARDS-CSA/CMVSS
1B1 CODES/STANDARDS USA
1B1 265 12D
FIRST USED
14 H25T
DO NOT SCALE DRAWING
TITLE: WIRING INSTL-BODY, 110V
SHEET 2 PART NO. 186250 REV
1 02-Apr-2014

8 7 6 5 4 3 2 1

186250 * A



- | | |
|---|---|
|  | SEE WIRING INSTL-TV/DVD FOR ADDITIONAL INFORMATION. |
|  | WIRE ROUTED IN SIDEWALL. |
|  | WIRE ROUTED IN ROOF. |
|  | SEE LOAD CENTER/ATS ASM FOR MORE INFORMATION. |

3. ALL GROUND WIRES TO BE COVERED WITH TUBING 8041-02-000.
2. ALL WIRING TO BE SECURED WITHIN 200MM OF OUTLET BOXES.
1. ALL WIRES TO BE CLAMPED WITH CLAMP 10495-01-000 OR CLIP 80734-01-000 EVERY 1200MM. USE SCREW G67-10-12U UNLESS OTHERWISE SPECIFIED.

NOTES:

12D ELECTRICAL SYSTEM 30 AMP

265 CODES/STANDARDS-CSA/CMVSS

1B1 CODES/STANDARDS USA

1B1 265 12D

FIRST USED


14 H25T

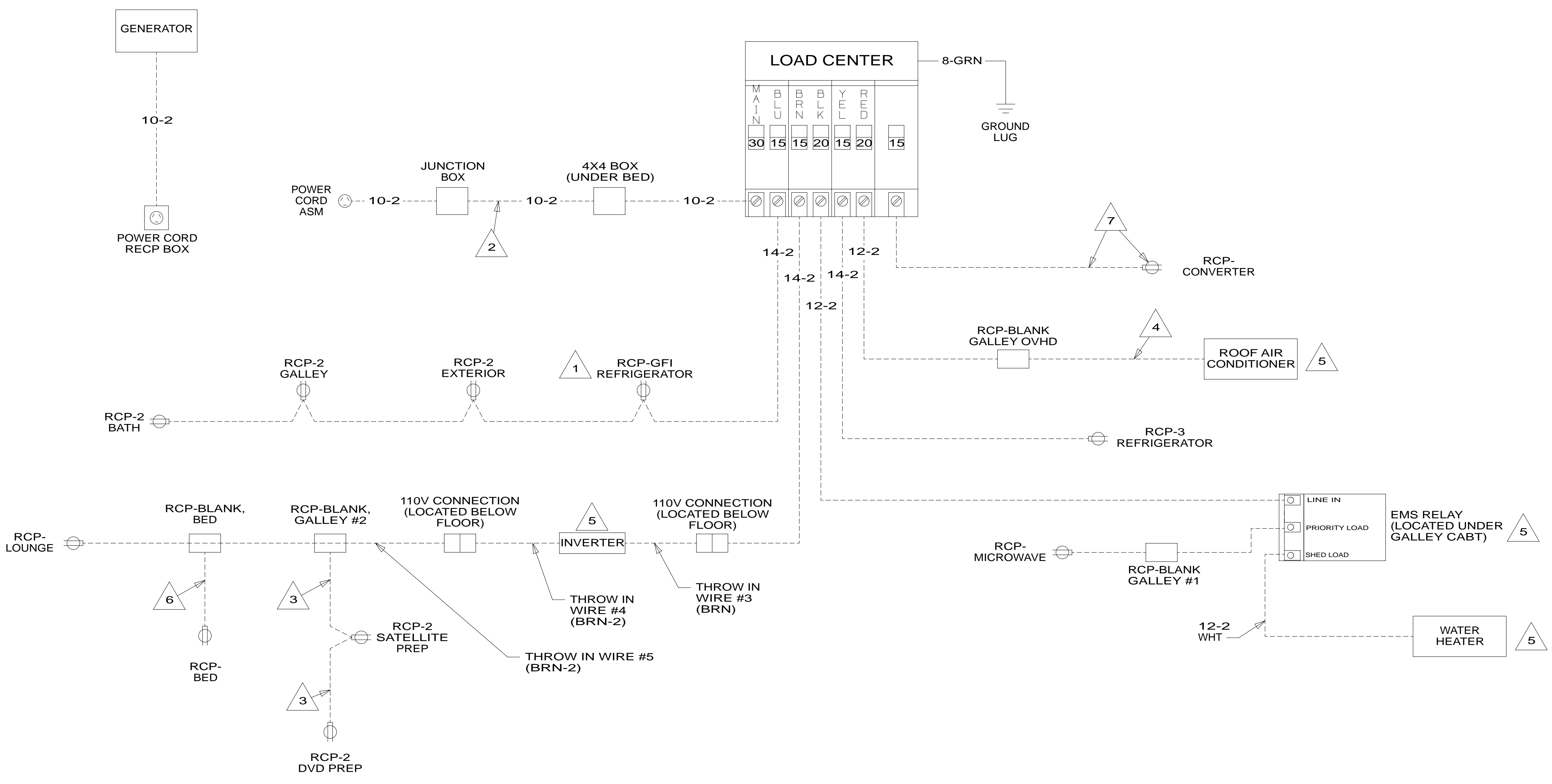
DO NOT SCALE DRAWING

WIRING INSTL-BODY,110V

SHEET 3	PART NO 186250	REV
---------	----------------	-----

FOR ELECTRICAL
TORQUE
SPECIFICATIONS
SEE DWG NO.
128783-01-000

	<p>FOR ELECTRICAL CALLOUTS SEE DWG NO. 121339-01-000</p>
---	--



- 7 WIRE AND RECEPTACLE SUPPLIED INTEGRATED INTO LOAD CENTER DISTRIBUTION PANEL.
- 6 WIRE ROUTED IN BACKWALL.
- 5 SEE MANUFACTURERS DIAGRAM.
- 4 WIRE ROUTED IN ROOF.
- 3 WIRE ROUTED IN SIDEWALL.
- 2 WIRE ROUTED THRU FLOOR.
- 1 ALL WIRES DOWN STREAM AND INCLUDING THIS OUTLET ARE GROUND FAULT CIRCUIT INTERRUPT PROTECTED.

NOTES:

- 265 CODES/STANDARDS-CSA/CMVSS
- 12D ELECTRICAL SYSTEM 30 AMP
- 1B1 CODES/STANDARDS USA

1B1 265 12D

FIRST USED			14 H25T
TITLE:			DO NOT SCALE DRAWING
SHEET			4
PART NO			186250
REV			

FOR ELECTRICAL TORQUE SPECIFICATIONS SEE DWG NO. 128783-01-000

FOR ELECTRICAL CALLOUTS SEE DWG NO. 121339-01-000

* 186250 *