



**DANGER**

**Danger of electrical shock, burns or death.** Always remove all power sources before attempting any repair, service or diagnostic work. Power can be present from shore power, generator, inverter or battery. All power sources must be disabled and secured before performing any service.

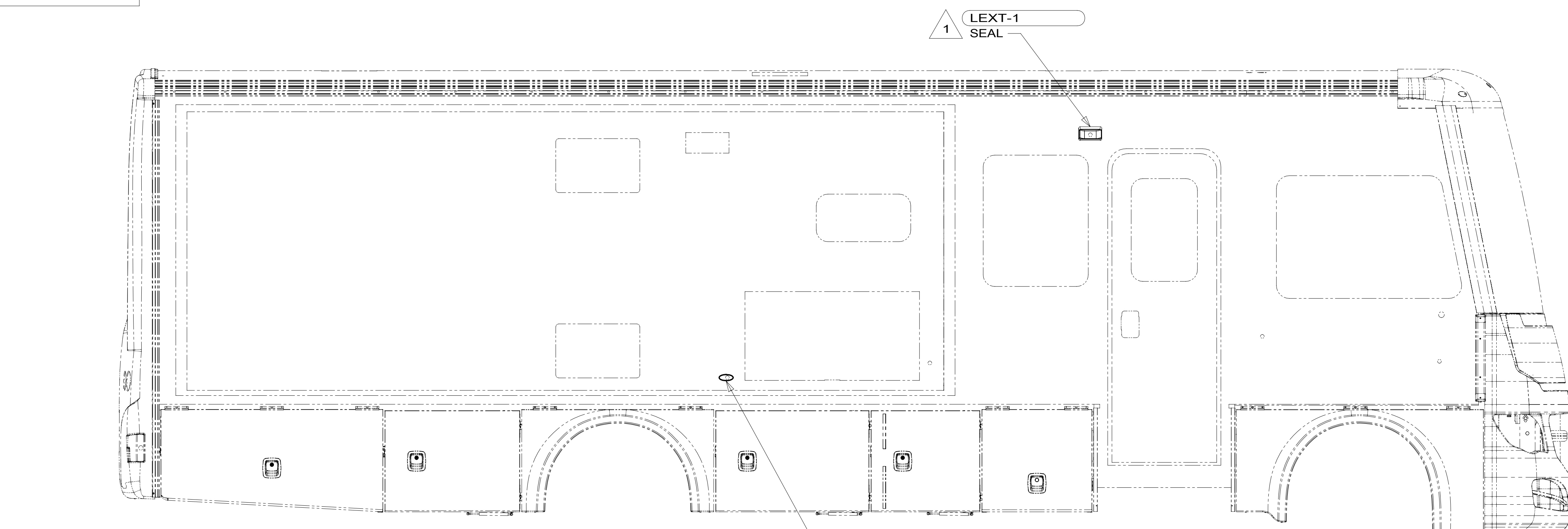


**CAUTION**

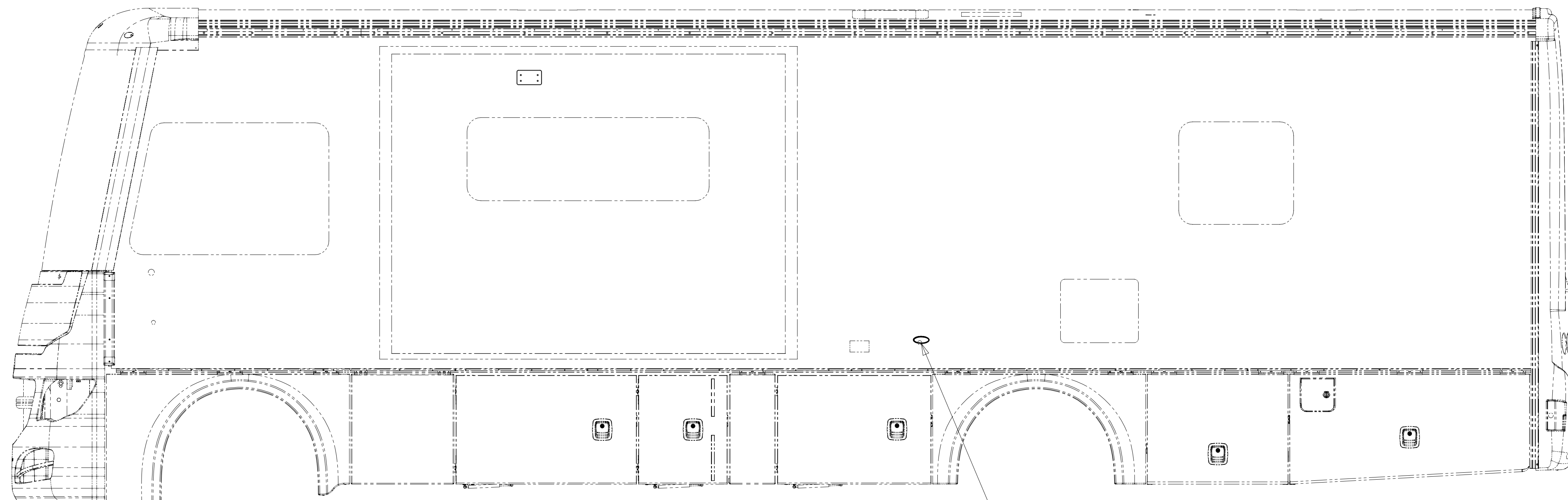
If you lack the skills, tools or equipment to perform diagnostic or repair work leave such work to an authorized Winnebago Industries dealer or other qualified shop.

DRAWING NO.	MODEL
186040-01	D30A,D33C
186040-02	D35G,D36V
186040-03	D36Z

RELEASE	REV/DATE	DWG NO	186040
REV ZONE	REVISION RECORD	DATE	DTR-ORIG



LAMP-MARKER, BASE  
 147680-01-CHT  
 LAMP-MARKER, LENS, AMBER  
 147680-02-CHT  
 SCREW  
 G11-08-12U (EXT) (2)



LAMP-MARKER, BASE  
 147680-01-CHT  
 LAMP-MARKER, LENS, AMBER  
 147680-02-CHT  
 SCREW  
 G11-08-12U (EXT) (2)

FOR ELECTRICAL TORQUE SPECIFICATIONS SEE DWG NO. 128783-01-000

FOR ELECTRICAL CALLOUTS SEE DWG NO. 121339-01-000

- 265 CODES/STANDARDS-CSA/CMVSS
- 1B1 CODES/STANDARDS-USA
- 1B1 265

**WINNEBAGO INDUSTRIES** COPYRIGHT 2014 WINNEBAGO INDUSTRIES, INC.

DTR	ORIG. DATE
CHKR	ALL DIMENSIONS ARE IN MILLIMETERS
P.E.	FIRST USED
M.E.	<b>14 D-SERIES</b>
DSNR	MATERIAL:
UNSPECIFIED TOLERANCES ARE:	
WHOLE DIM (X)	:
ONE-PLACE (X.X)	:
TWO-PLACE (X.XX)	:
ANGLE	:
THIRD ANGLE PROJECTION	
DO NOT SCALE DRAWING	REFER TO ES0018 FOR FASTENER TIGHTENING GUIDELINES
TITLE: <b>WIRING INSTL-EXTERIOR LAMPS</b>	
SHEET 1 OF 3	PART NO <b>186040</b> REV

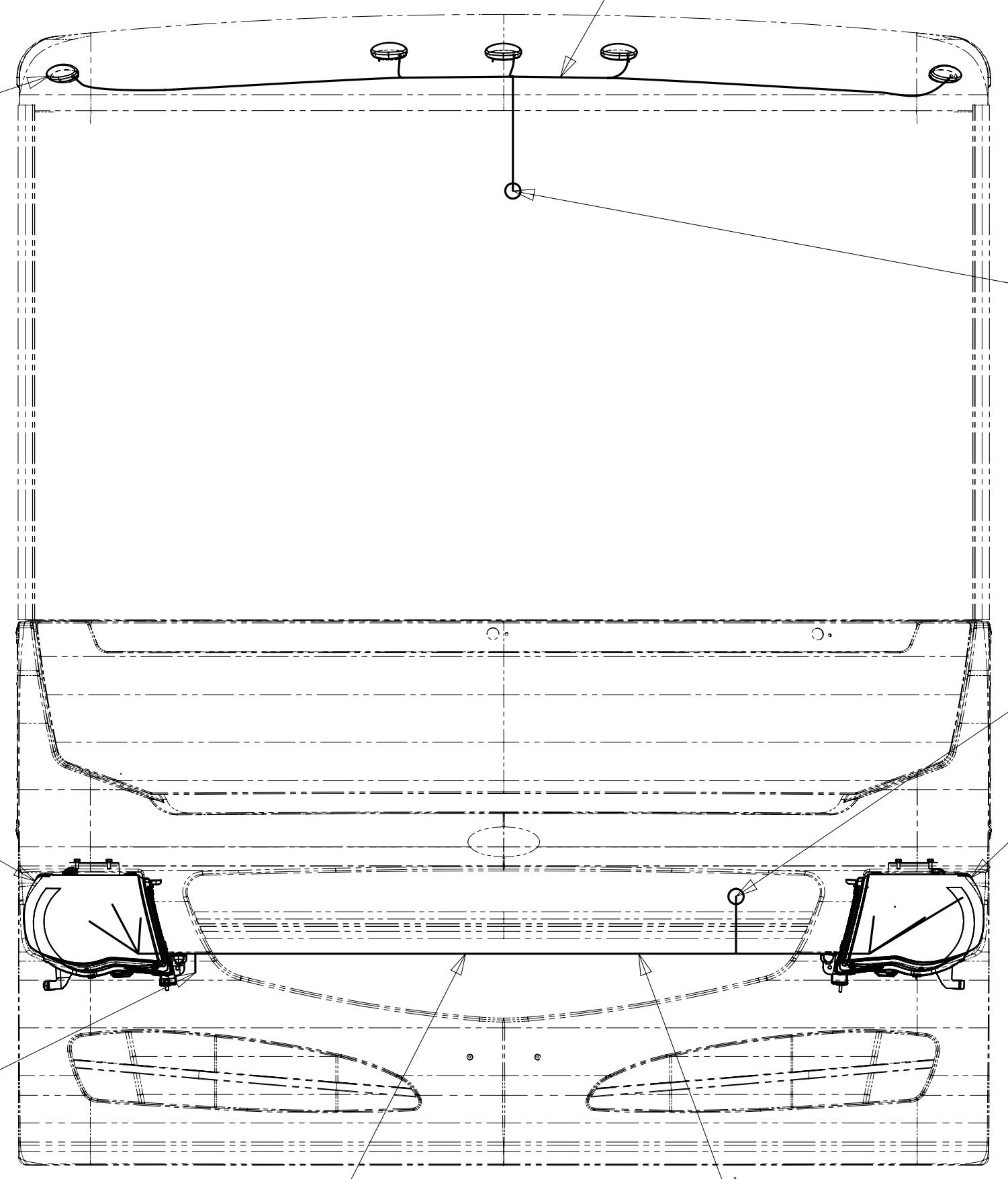
NOTES:  
 1 NOT USED ON D36Z.

\*186040

LAMP-MARKER,BASE  
147680-01-CHT (5)  
LAMP-MARKER,LENS,AMBER  
147680-02-CHT (5)  
SCREW  
G11-08-12U (EXT) (10)  
CONNECTOR  
58028-01-000 (10)

WIRE ASM-CLEARANCE LAMPS  
129943-01-000

LAMP-MARKER,BASE  
147680-01-CHT (5)  
LAMP-MARKER,LENS,RED  
147680-03-CHT (5)  
SCREW  
G11-08-12U (EXT) (10)  
CONNECTOR  
58028-01-000 (10)



2 PIN HOUSING  
TO WIRE ASM-  
IP, MAIN

CHASSIS HOUSING  
TO CHASSIS HEADLAMP  
CONNECTOR

HEADLAMP ASM-RIGHT  
175183-01-000

HEADLAMP ASM-LEFT  
175183-02-000

2 RING TERMINAL  
TO GROUND BOLT

WIRE ASM-HEADLAMP  
149398-15-000

4 LAMP-BACKUP  
172560-04-000

6 4 LIGHT ASM-STOP/TURN  
172560-02-000

LAMP-MARKER,RED  
117826-01-000 (2)  
GASKET-MARKER LIGHT  
117826-03-000 (2)  
BULB  
36196-01-000 (2)  
SCREW  
G11-08-12U (EXT) (4)

REFLECTOR-STICK ON-RED  
106646-02-000 (2)

7 LIGHT-LICENSE  
066432-02-000  
SCREW  
G39-08-12T (EXT) (2)  
CONNECTOR  
58028-01-000 (2)

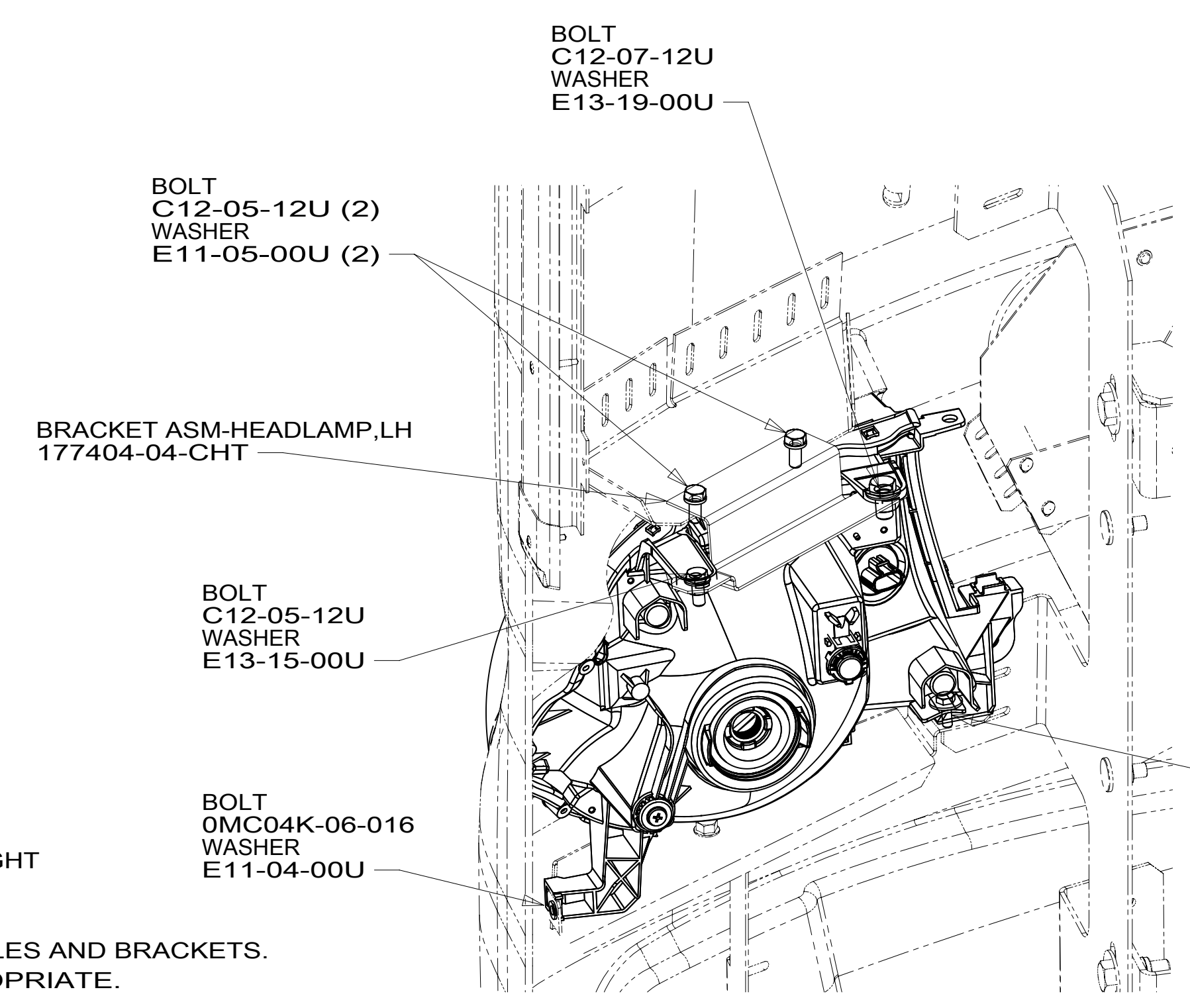
LAMP ASM-BRAKE  
136916-01-000  
SCREW  
G11-08-20T (2)  
CONNECTOR  
58028-01-000 (2)  
BLK/WHT TO YEL  
BLK TO WHT

LIGHT ASM-STOP/TURN  
172560-01-000

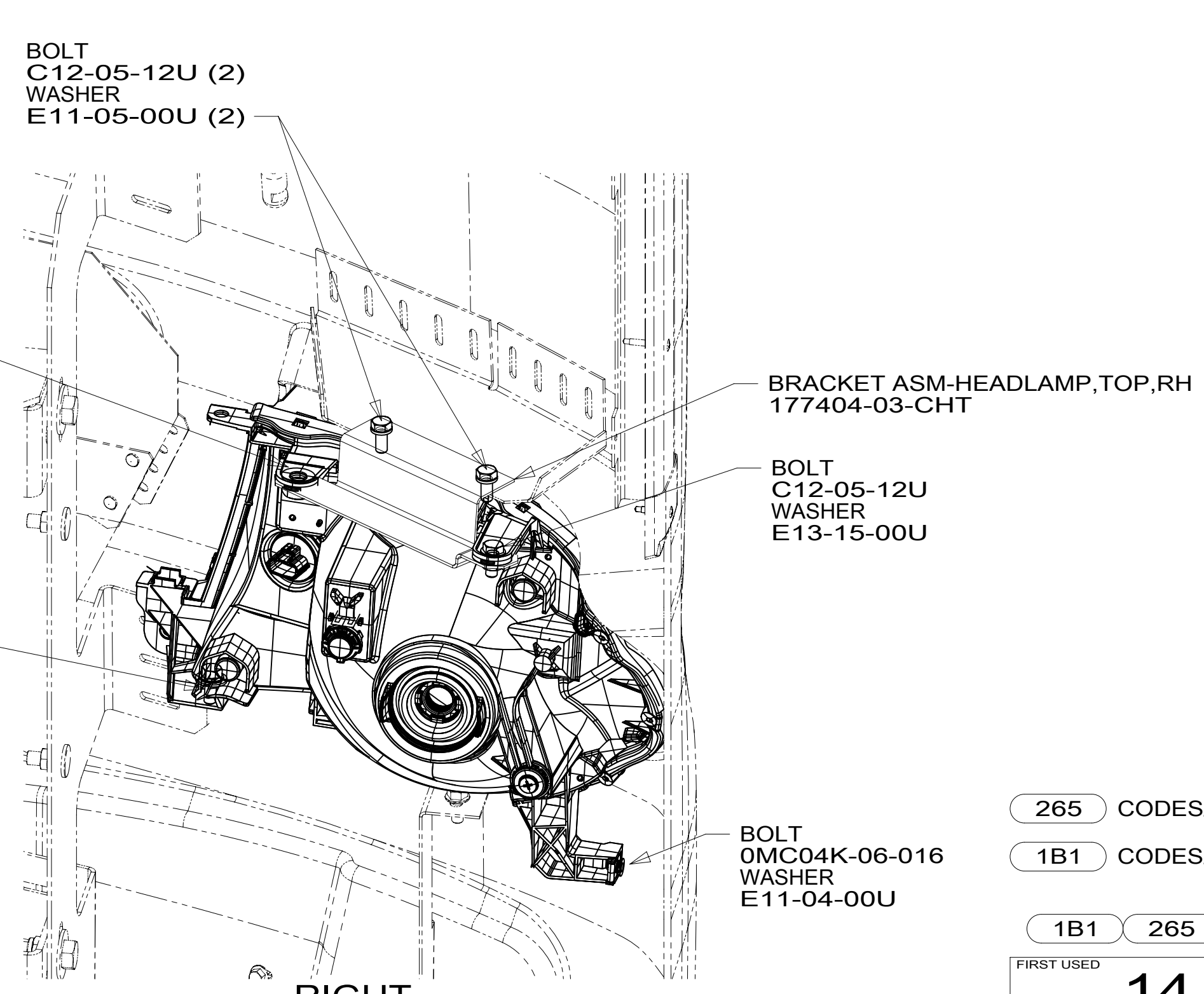
LAMP-BACKUP  
172560-03-000

LAMP-LICENSE PLATE  
87201-01-000  
SCREW  
G11-06-12U (EXT) (2)

CONNECTOR-TRAILER  
157593-01-000  
SCREW  
101618-01-000



LEFT



RIGHT

- 8 MOUNT LIGHT SUCH THAT THE MOLDED CONNECTOR ON LIGHT IS TOWARD THE BOTTOM.
- 7 USED ON D33C, D30A, D35G ONLY.
- 6 CONNECT 4 PIN HSG WITH WRAP OF RED TAPE TO THE STOP/TURN/TAILLAMP.
- 5 USED ON D35J, D36V.
- 4 MOUNT LIGHT SUCH THAT THE MOLDED CONNECTOR ON LIGHT IS TOWARD THE TOP.
- 3 SECURE WIRE ASM APPROX. EVERY 450 TO BATTERY CABLES AND BRACKETS. USE TIE-WIRE 8343-01-000 OR 93147-01-000 AS APPROPRIATE.
- 2 CLEAN PAINT OFF METAL (BOLT) BEFORE CONNECTING GROUND TO INSURE CONTACT. ALSO MOUNT CHASSIS SUPPLIED HORN TO GROUND BOLT.

1. GATHER ALL EXCESS WIRE AFTER MAKING ALL CONNECTIONS AND BUNDLE AND SECURE WITH TIE-WIRE 8343-01-000 OR 93147-01-000.

NOTES:

BOLT  
C12-07-12U  
WASHER  
E13-19-00U

BOLT  
C12-05-12U (2)  
WASHER  
E11-05-00U (2)

BRACKET ASM-HEADLAMP,LH  
177404-04-CHT

BOLT  
C12-05-12U  
WASHER  
E13-15-00U

BOLT  
OMC04K-06-016  
WASHER  
E11-04-00U

BOLT  
C12-05-12U (2)  
WASHER  
E11-05-00U (2)

BOLT  
C13-07-16B  
WASHER  
E13-19-00U

BOLT  
C26-05-12U  
WASHER  
E13-16-00U  
NUT  
D46-05-00A

BOLT  
C12-04-12U  
WASHER  
E13-16-00U  
NUT  
D46-05-00A

BRACKET ASM-HEADLAMP, TOP,RH  
177404-03-CHT

BOLT  
C12-05-12U  
WASHER  
E13-15-00U

BOLT  
OMC04K-06-016  
WASHER  
E11-04-00U

265 CODES/STANDARDS-CSA/CMVSS

1B1 CODES/STANDARDS USA

1B1 265

FIRST USED  
**14 D-SERIES**

DO NOT SCALE DRAWING

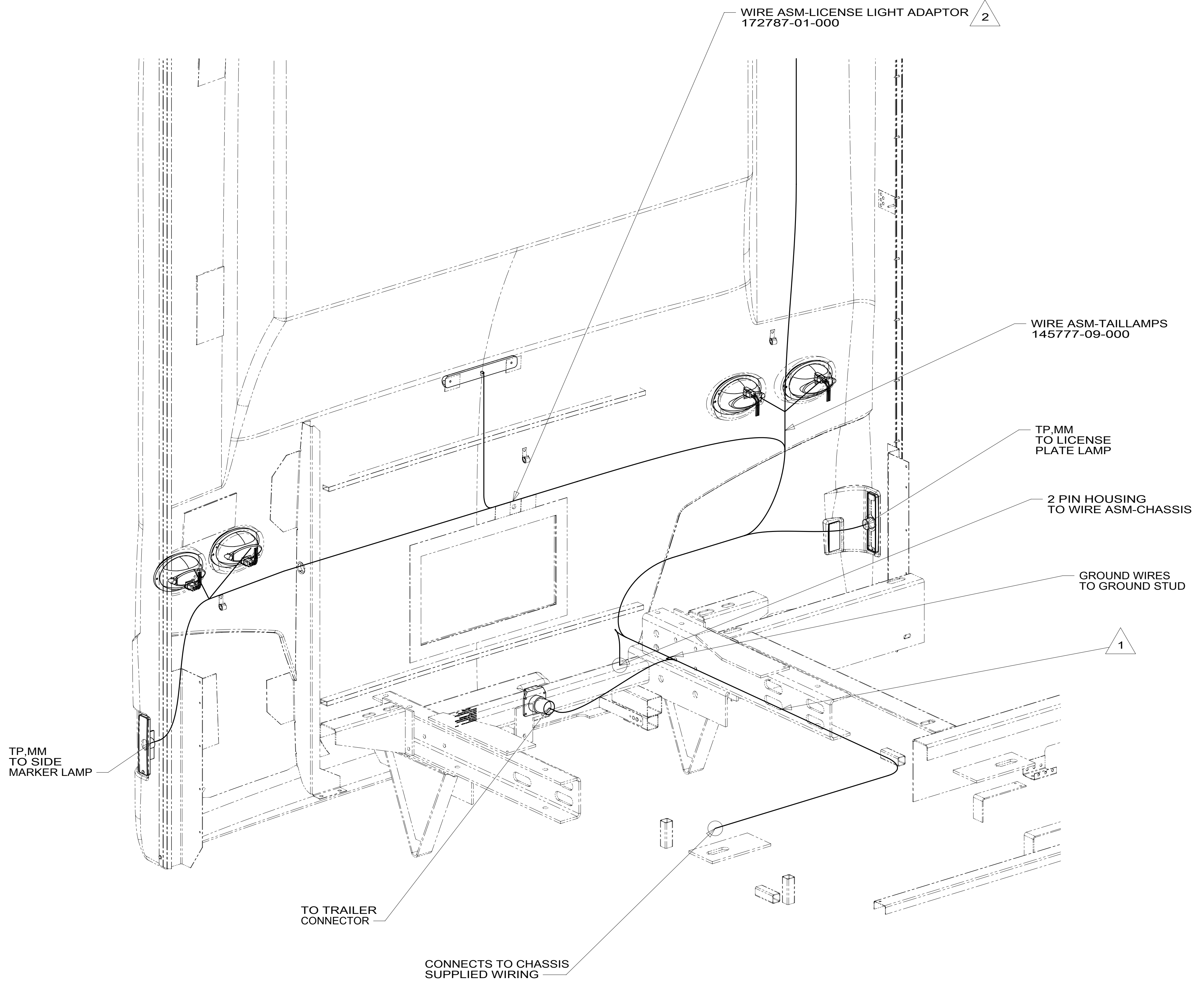
TITLE:  
**WIRING INSTL-EXTERIOR LAMPS**

SHEET 2 PART NO **186040** REV

\*186040

FOR ELECTRICAL  
TORQUE  
SPECIFICATIONS  
SEE DWG NO.  
128783-01-000

FOR ELECTRICAL  
CALLOUTS  
SEE DWG NO.  
121339-01-000



- 2 USED ON D33C & D30A ONLY.
- 1 WIRE TIE 8343-02. FASTEN TO FRAME AT LEAST ONCE EVERY 600MM.

NOTES:

FOR ELECTRICAL TORQUE SPECIFICATIONS SEE DWG NO. 128783-01-000

FOR ELECTRICAL CALLOUTS SEE DWG NO. 121339-01-000

265 CODES/STANDARDS-CSA/CMVSS

1B1 CODES/STANDARDS USA

1B1 265

FIRST USED **14 D-SERIES**

**DO NOT SCALE DRAWING**

TITLE: **WIRING INSTL-EXTERIOR LAMPS**

SHEET **3** PART NO **186040** REV