



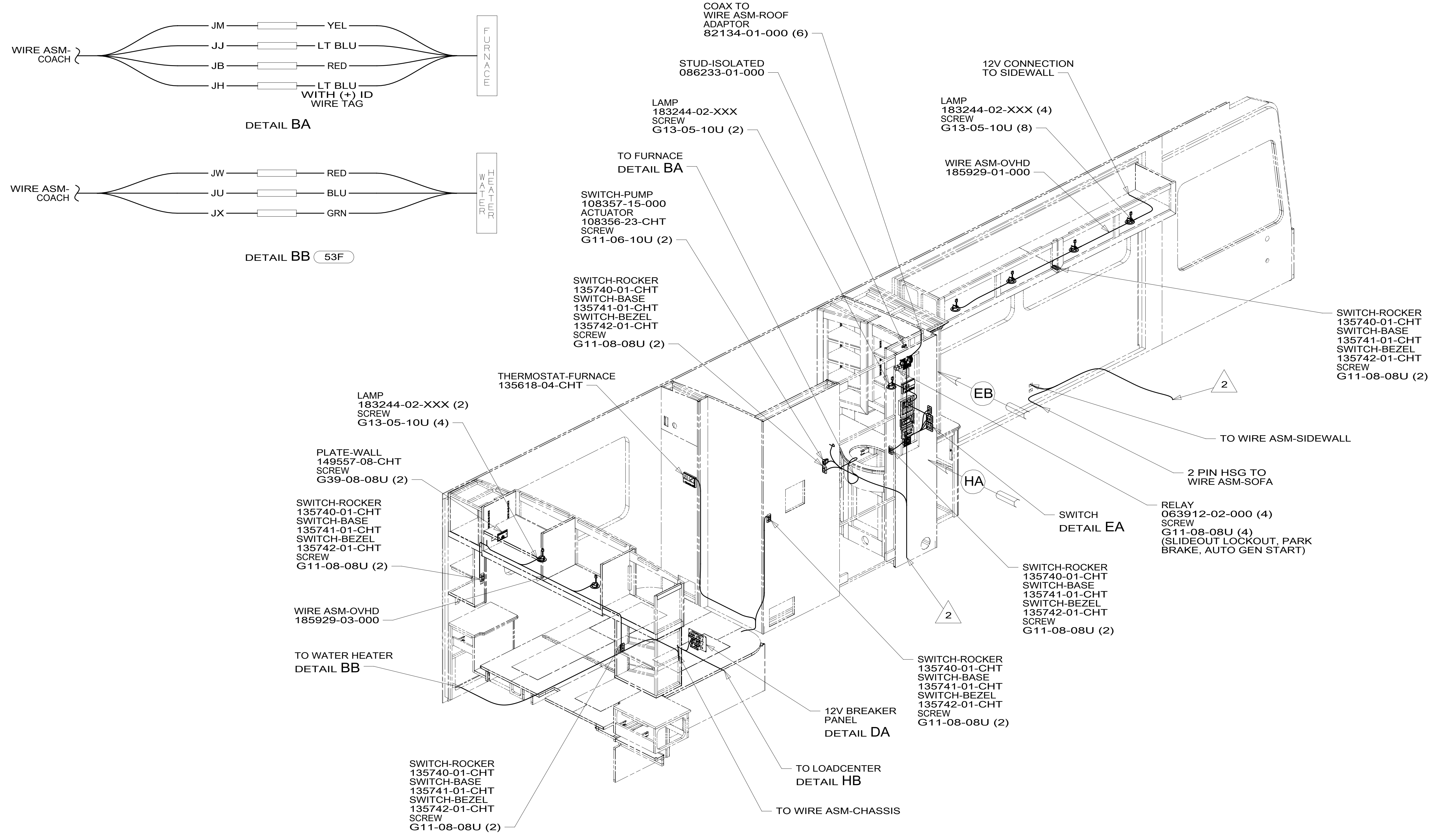
DANGER

Danger of electrical shock, burns or death. Always remove all power sources before attempting any repair, service or diagnostic work. Power can be present from shore power, generator, inverter or battery. All power sources must be disabled and secured before performing any service.



CAUTION

If you lack the skills, tools or equipment to perform diagnostic or repair work leave such work to an authorized Winnebago Industries dealer or other qualified shop.



- 2 WIRE PASSES THROUGH FLOOR IN THIS AREA.
1. AT MINIMUM ALL WIRES TO BE SUPPORTED AND SECURED PER CODE REQUIREMENTS. USE CLAMP 10495 OR 10497 OR WIRE TIE 8343 OR 108046 AND SCREW G67-XX-XXX OR G56-XX-XXX AS APPROPRIATE FOR INSTALLATION.

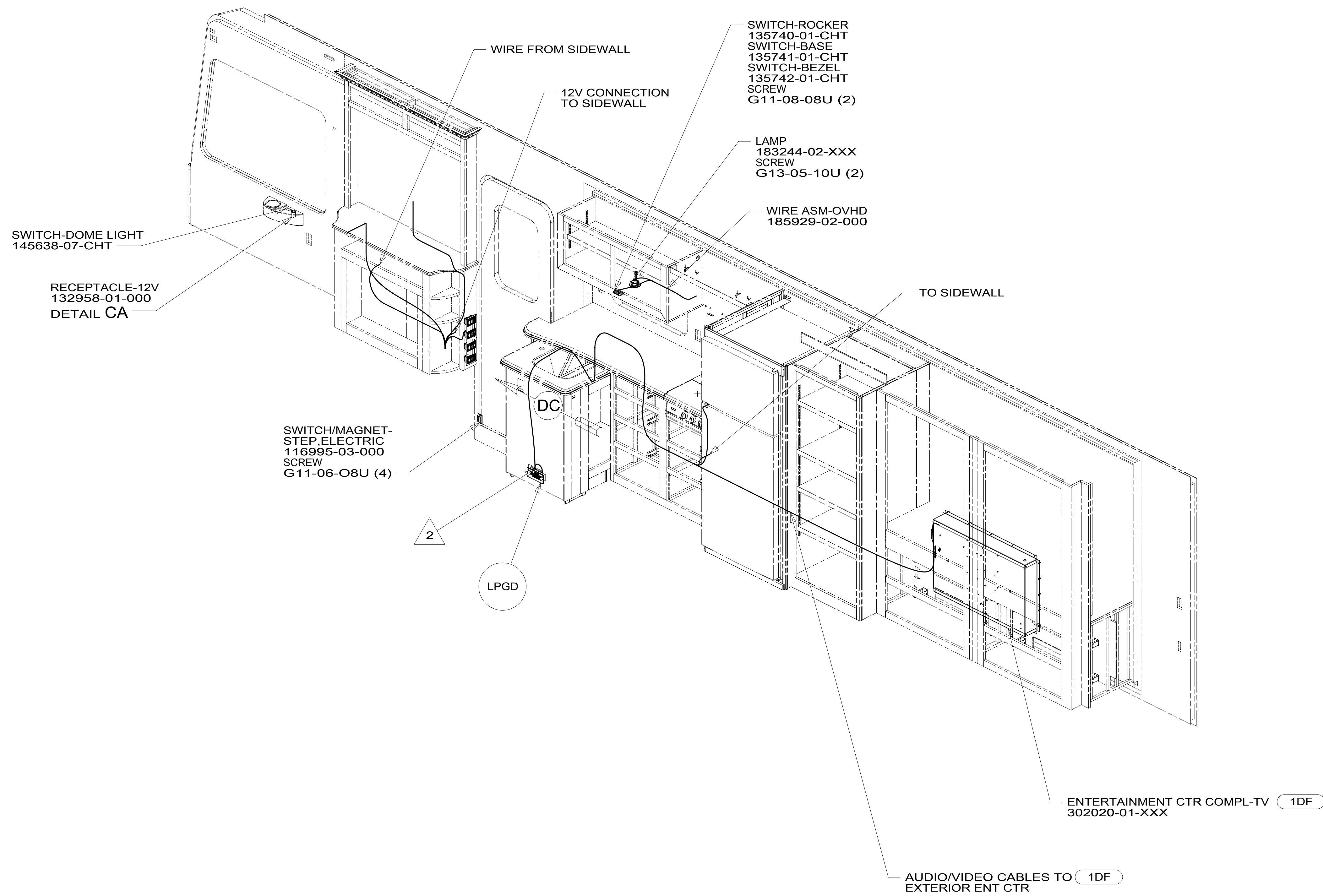
- 53F WATER HEATER-ELEC. IGNITION
- 265 CODES/STANDARDS-CSA/CMVSS
- 1B1 CODES/STANDARDS USA

FIRST USED	14 L34T	
DO NOT SCALE DRAWING		
WIRING INSTL-BODY, 12V		
SHEET 2	PART NO 185724	REV

FOR ELECTRICAL TORQUE SPECIFICATIONS SEE DWG NO. 128783-01-000

FOR ELECTRICAL CALLOUTS SEE DWG NO. 121339-01-000

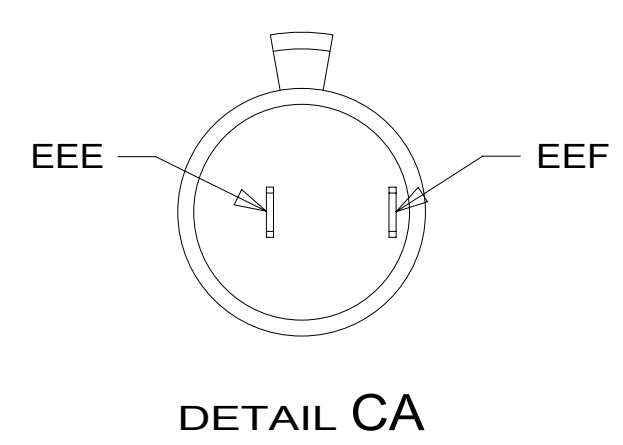
*185724 *A



2 WIRE PASSES THROUGH FLOOR IN THIS AREA.

1. AT MINIMUM ALL WIRES TO BE SUPPORTED AND SECURED PER CODE REQUIREMENTS. USE CLAMP 10495 OR 10497 OR WIRE TIE 8343 OR 108046 AND SCREW G67-XX-XXX OR G56-XX-XXX AS APPROPRIATE FOR INSTALLATION.

NOTES:



FOR ELECTRICAL TORQUE SPECIFICATIONS SEE DWG NO. 128783-01-000

FOR ELECTRICAL CALLOUTS SEE DWG NO. 121339-01-000

- 1DF EXT TV ENTERTAINMENT CENTER
- 265 CODES/STANDARDS-CSA/CMVSS
- 1B1 CODES/STANDARDS USA

1B1 265

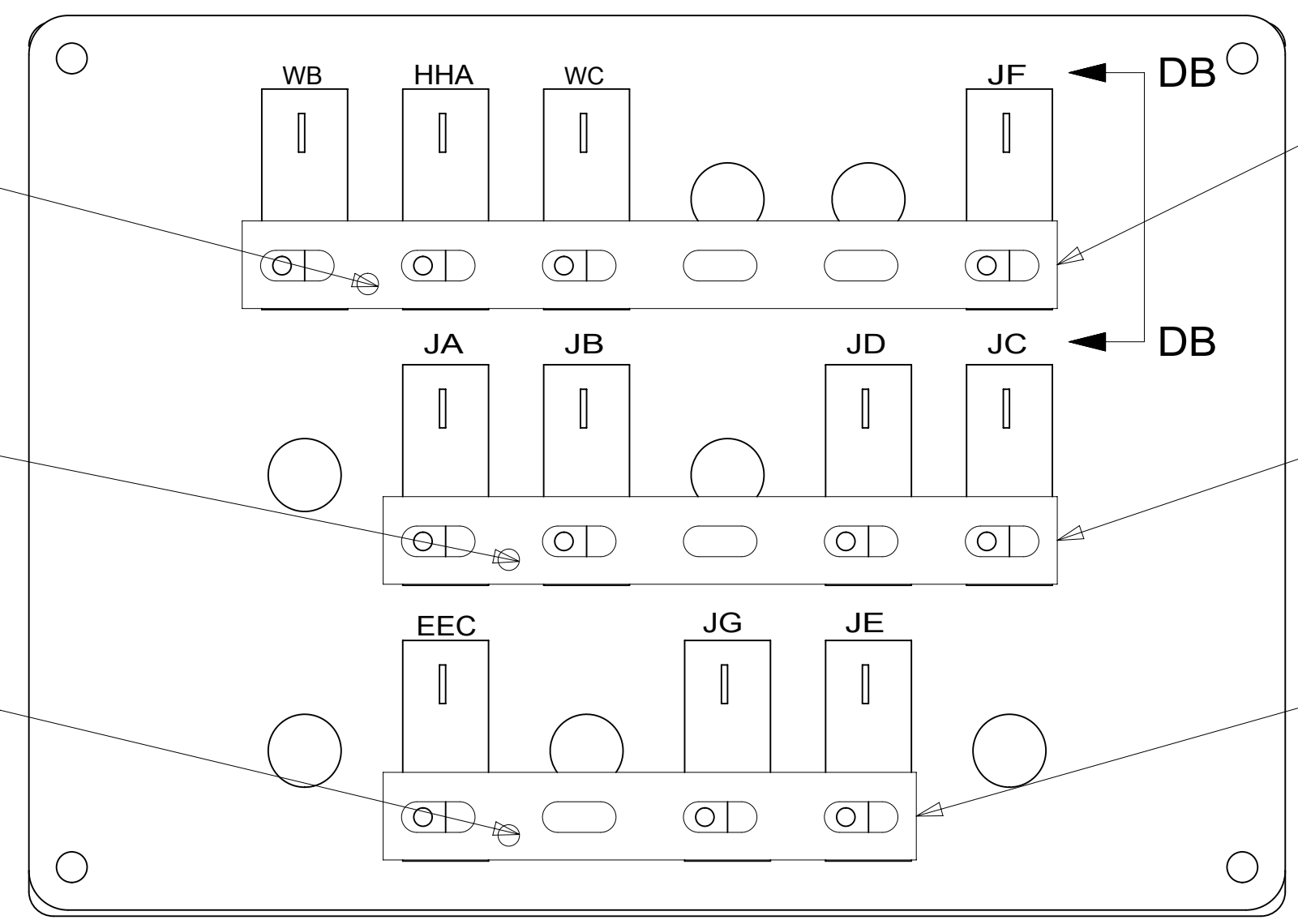
FIRST USED	
14 L34T	
DO NOT SCALE DRAWING	
TITLE: WIRING INSTL-BODY, 12V	
SHEET 3	PART NO 185724 REV

*185724 *A

J
6 BLK
FROM WIRE
ASM-CHASSIS
SCREW
G39-08-06U

K
6 BLK
FROM WIRE
ASM-CHASSIS
SCREW
G39-08-06U

Z
6 BLK
FROM WIRE
ASM-CHASSIS
SCREW
G39-08-06U



BUSS BAR
141744-05-000
SCREW
G39-08-06U

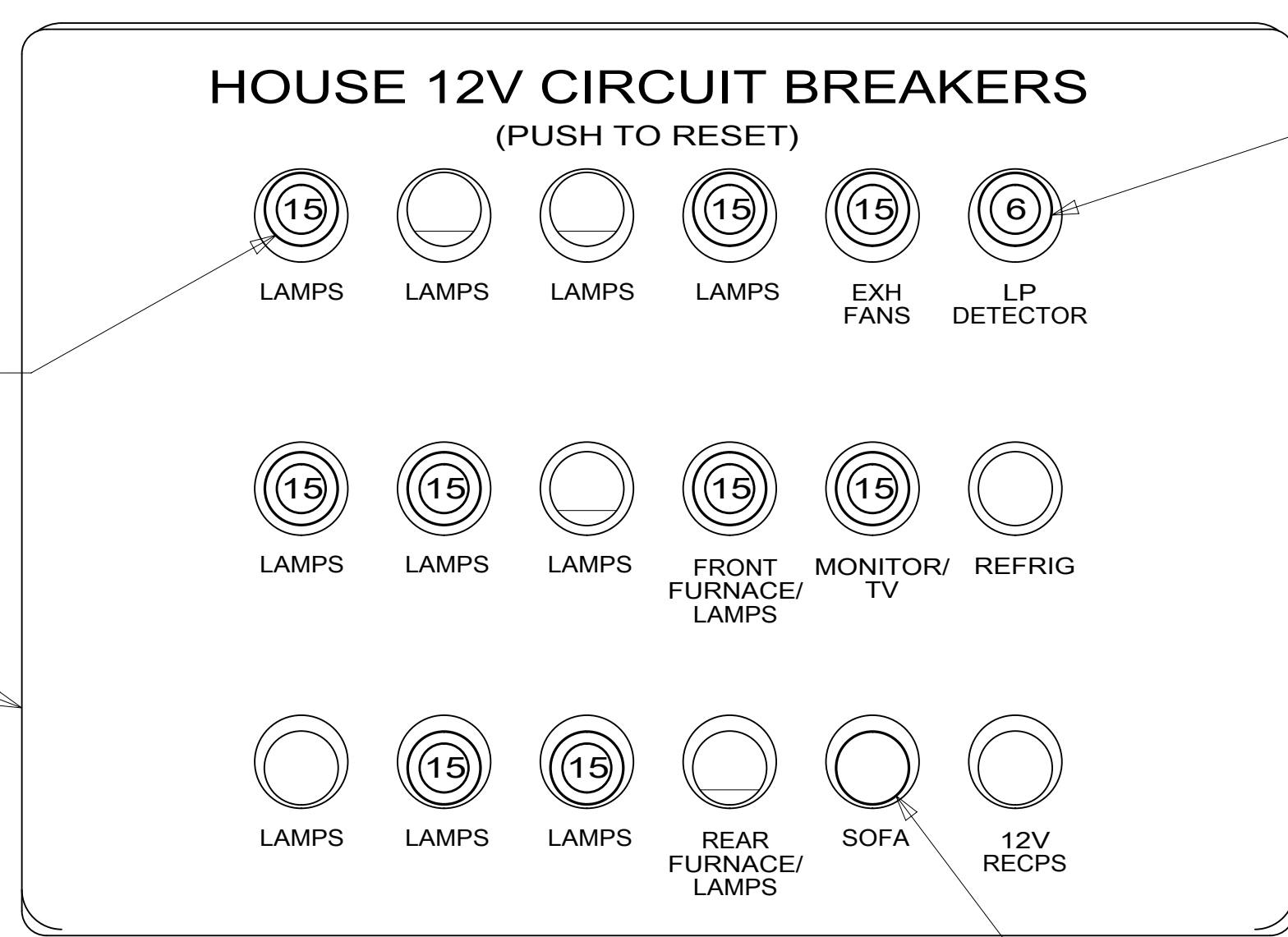
BUSS BAR
141744-04-000
SCREW
G39-08-06U

BUSS BAR
141744-03-000
SCREW
G39-08-06U

DETAIL DA
(BACK VIEW)

CIRCUIT BREAKER
93654-02-000 (10)
(15 AMP)
SCREW
G52-06-04U (10)
WASHER
OME02B-04-071 (10)

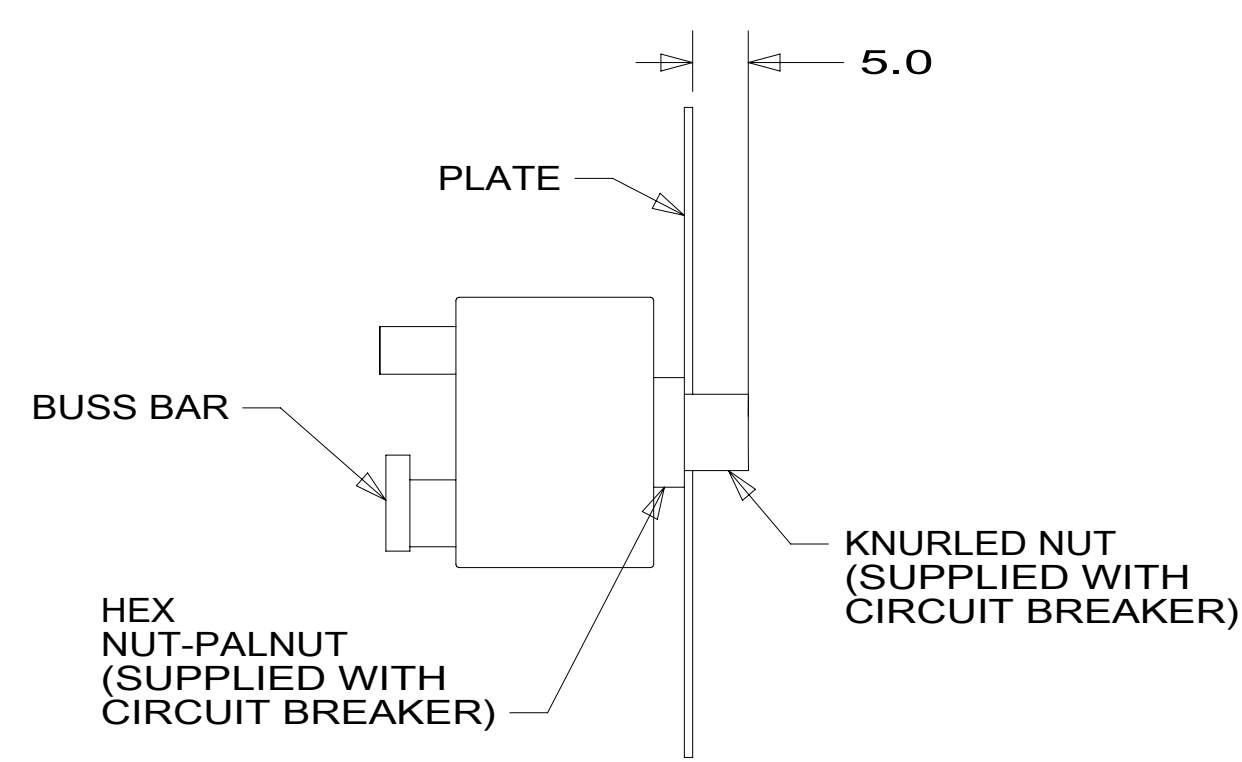
PLATE
139067-06-CHT
LABEL
92547-14-000
SCREW
G11-10-12U (4)



CIRCUIT BREAKER
93654-01-000
(6 AMP)
SCREW
G52-06-04U
WASHER
OME02B-04-071

CIRCUIT BREAKER
182283-01-000
(20 AMP)
SCREW
G52-06-04U
WASHER
OME02B-04-071

DETAIL DA
(FRONT VIEW)



VIEW DB-DB

PLATE-SWITCH
176859-07-CHT
SCREW
G67-10-12U (6)

SWITCH-COACH LIGHTS
174757-17-CHT

PANEL-SWITCH,3-WAY
174834-02-CHT (4)

SWITCH-AWNING POWER
174757-19-CHT

SWITCH-AWNING LIGHT
174757-38-CHT

SWITCH-AWNING LIGHT
174757-38-CHT

SWITCH-ENTRY STEP
174757-27-CHT

SWITCH-CHASS BATT DISC
174757-06-CHT
WIRE ASM-THERM
186796-01-000

RELAY
063912-02-000 (5)
SCREW
G11-08-08U (5)
(FRONT AWNING, REAR
AWNING, AWNING LOCKOUT)

SWITCH-BLANK
145754-01-CHT

SWITCH-COMPT LIGHTS
174757-21-CHT

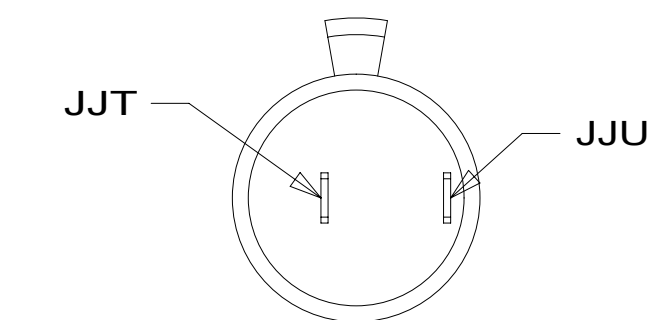
SWITCH-PATIO AWNING
174757-03-CHT

SWITCH-REAR AWNING
174757-36-CHT

SWITCH-AUTO LEVEL
174757-04-CHT

SWITCH-COACH BATT DISC
174757-07-CHT
WIRE ASM-THERM
186796-01-000

DETAIL DC



DETAIL DD

- (15L) RESIDENTIAL REFRIGERATOR PKG
- (79W) REFRIGERATOR-4 DOOR
- (265) CODES/STANDARDS-CSA/CMVSS
- (1B1) CODES/STANDARDS USA

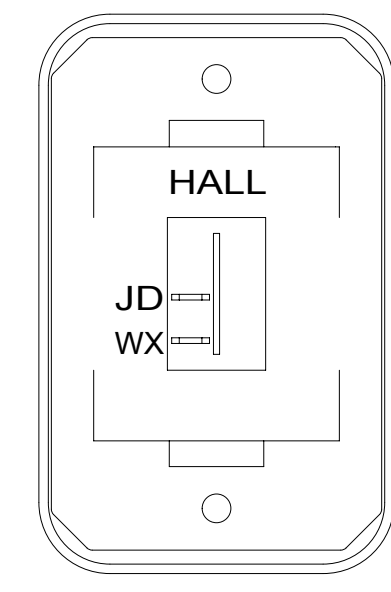
(1B1) (265)

FIRST USED	
14 L34T	
DO NOT SCALE DRAWING	
TITLE: WIRING INSTL-BODY, 12V	
SHEET 4	PART NO 185724
REV 1 02-Nov-2015	

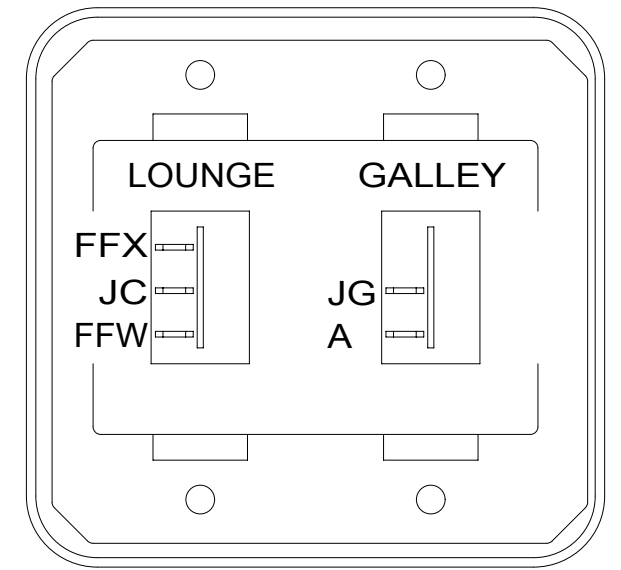
FOR ELECTRICAL
TORQUE
SPECIFICATIONS
SEE DWG NO.
128783-01-000

FOR
ELECTRICAL
CALLOUTS
SEE DWG NO.
121339-01-000

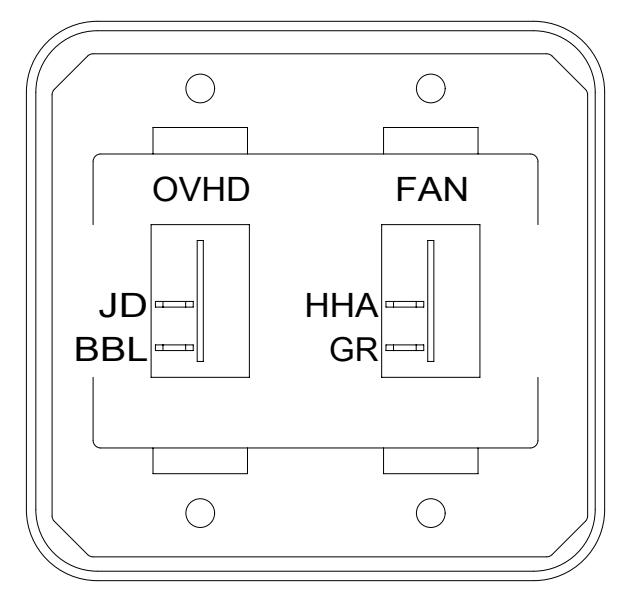
*185724 *A



SWITCH-ROCKER
135740-01-CHT
SWITCH-BASE
135741-01-CHT
SWITCH-BEZEL
135742-01-CHT
SCREW
G11-08-08U (2)



SWITCH-ROCKER
135740-01-CHT
135740-02-CHT
SWITCH-BASE
135741-02-CHT
SWITCH-BEZEL
135742-02-CHT
SCREW
G11-08-08U (4)

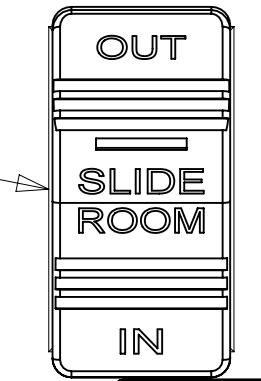


SWITCH-ROCKER
135740-01-CHT (2)
SWITCH-BASE
135741-02-CHT
SWITCH-BEZEL
135742-02-CHT
SCREW
G11-08-08U (4)

DETAIL EA 1

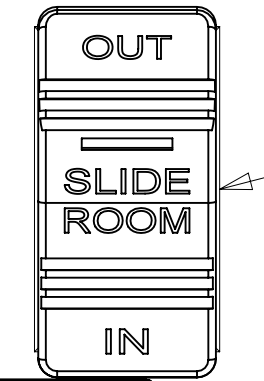
LABEL-SLIDEOUT,
PASS.FRONT
163992-04-CHT

PASSENGER'S
SIDE FRONT



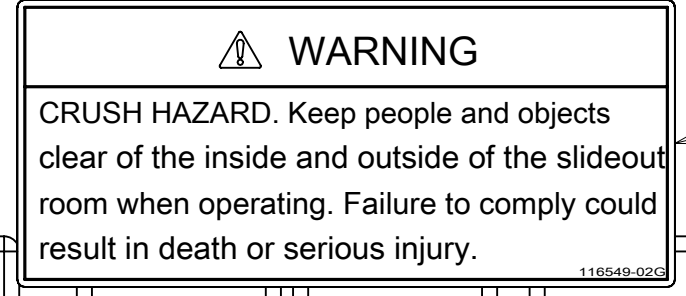
SWITCH-ROCKER
108357-18-000
ACTUATOR-SWITCH
108356-31-CHT

DRIVER'S
SIDE FRONT



LABEL-SLIDEOUT,
DRIVER.FRONT
163992-01-CHT

SWITCH-ROCKER
108357-18-000
ACTUATOR-SWITCH
108356-31-CHT



LABEL-WARNING,SLIDEOUT
116549-02-000

DETAIL EB

1 SWITCHES ARE NOT LABELED. LABELS ARE SHOWN FOR INFORMATION ONLY.

NOTES:

FOR ELECTRICAL
TORQUE
SPECIFICATIONS
SEE DWG NO.
128783-01-000

X-X
FOR
ELECTRICAL
CALLOUTS
SEE DWG NO.
121339-01-000

265 CODES/STANDARDS-CSA/CMVSS

1B1 CODES/STANDARDS USA

1B1 265

FIRST USED
14 L34T

DO NOT SCALE DRAWING

TITLE:
WIRING INSTL-BODY, 12V

SHEET 5 PART NO **185724** REV

*185724 *A

8

7

6

5

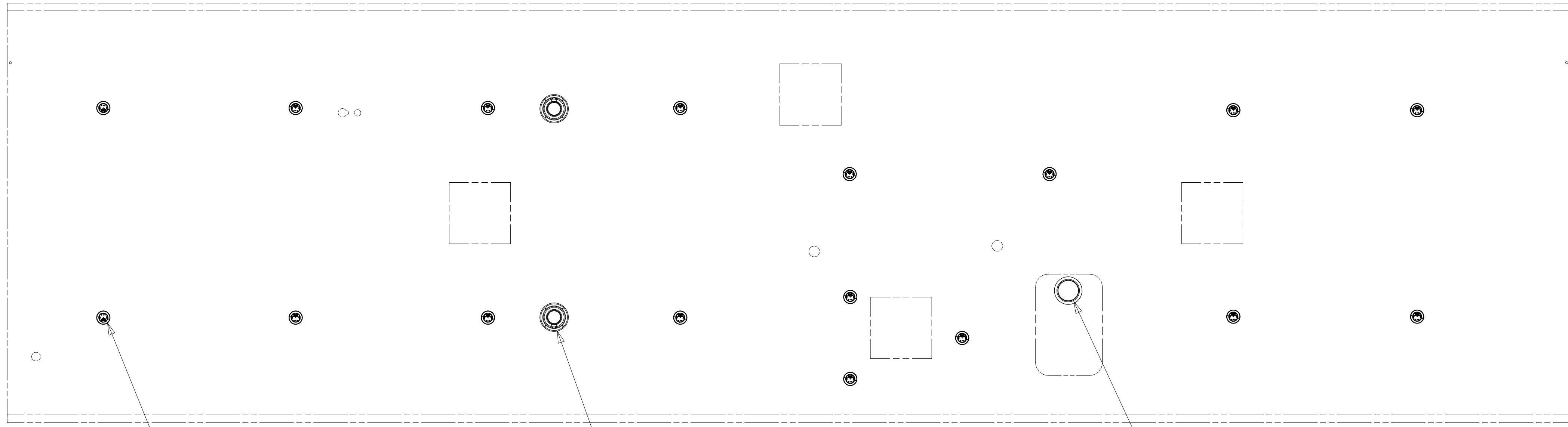
↓

4

3

2

1



LIGHT ASM-ROUND 3" W/HSG
183244-02-XXX (17)
SCREW
G13-05-10U (34)

SPEAKER-5-1/4"
180783-01-CHT (2)
SCREW
G11-08-12U (8)

LSH-3

D

D

C

C

B

B

A

A

8

7

6

5

↑

4

3

2

1

265 CODES/STANDARDS-CSA/CMVSS

1B1 CODES/STANDARDS USA

1B1 265

FIRST USED
14 L34T

DO NOT SCALE DRAWING

TITLE: **WIRING INSTL-BODY, 12V**

SHEET 6 PART NO **185724** REV

FOR ELECTRICAL
TORQUE
SPECIFICATIONS
SEE DWG NO.
128783-01-000

FOR ELECTRICAL
CALLOUTS
SEE DWG NO.
121339-01-000

X-X

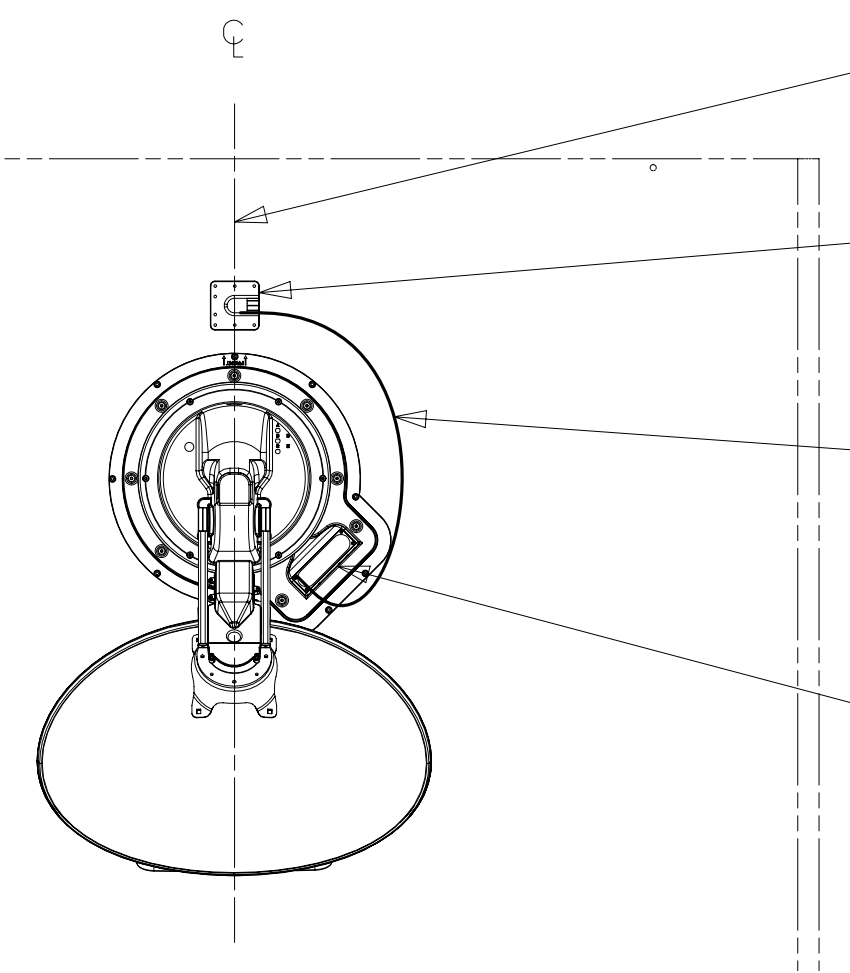
*185724 *A

THE SATELLITE DISH AND WIRE CONNECTIONS ARE TO BE PLACED ON THE CENTERLINE OF THE MOTORHOME FACING FORWARD.

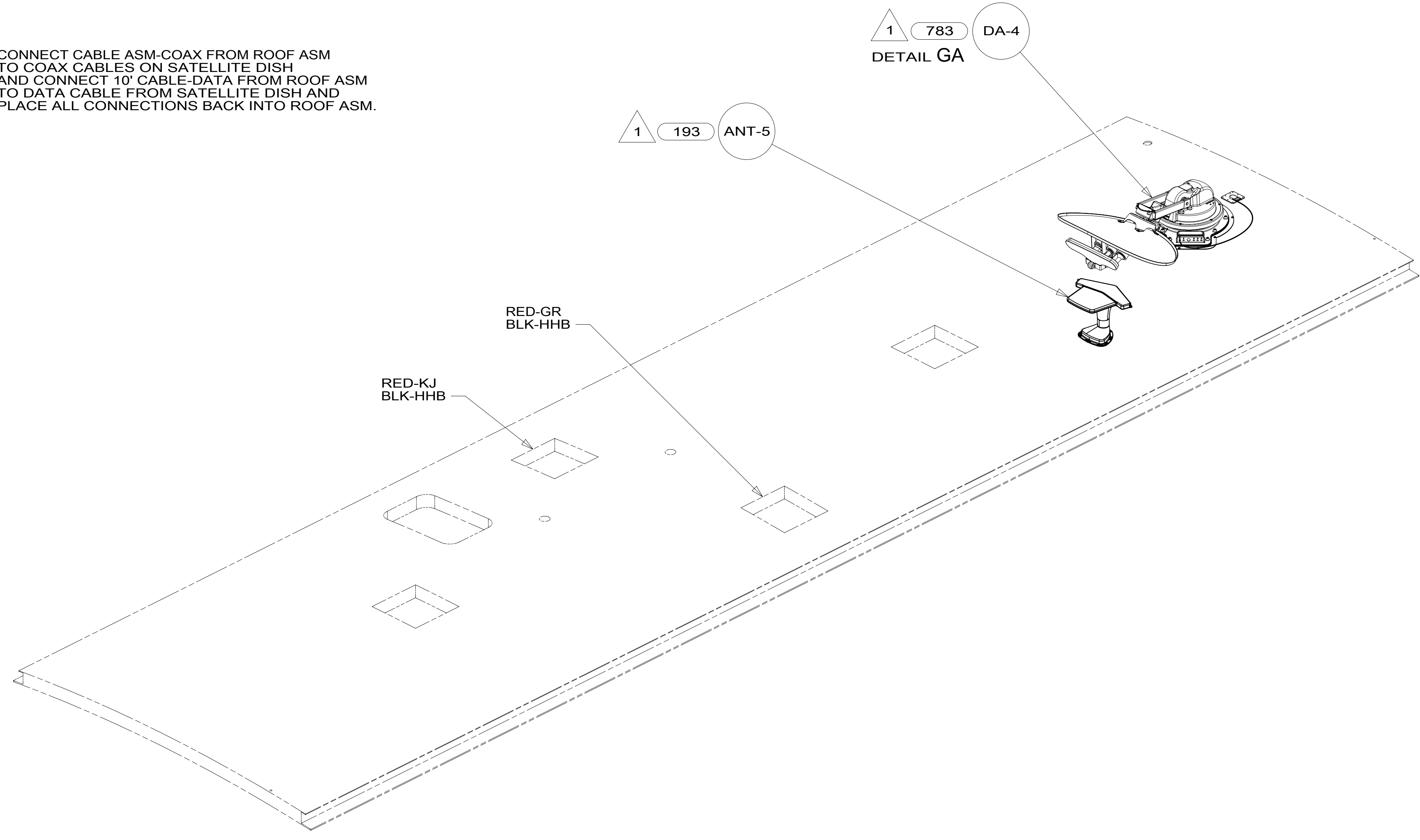
SEPARATE CABLES AND INSTALL WIRE COVER OVER HOLE IN ROOF ASM WITH CABLES EXITING ON PASSENGERS SIDE.

WHEN APPLYING ROOF SEALANT TO SATELLITE DISH, PLACE ROOF SEALANT HERE (APPROX. 75MM WIDE) AND PUSH THE CABLES INTO THE SEALANT TO STABILIZE THEM.

CONNECT CABLE ASM-COAX FROM ROOF ASM TO COAX CABLES ON SATELLITE DISH AND CONNECT 10' CABLE-DATA FROM ROOF ASM TO DATA CABLE FROM SATELLITE DISH AND PLACE ALL CONNECTIONS BACK INTO ROOF ASM.



DETAIL GA



1 SEE MANUFACTURER'S INSTALLATION FOR ADDITIONAL INFORMATION.

NOTES:

FOR ELECTRICAL TORQUE SPECIFICATIONS SEE DWG NO. 128783-01-000

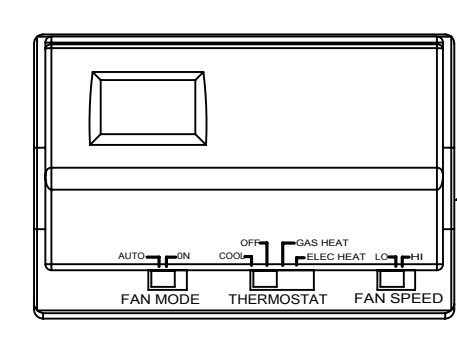
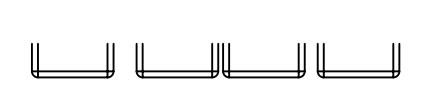
FOR ELECTRICAL CALLOUTS SEE DWG NO. 121339-01-000

- 783 SATELLITE HD TV SYSTEM AUTO C
- 193 TV ANTENNA-AMPLIFIED SYSTEM
- 265 CODES/STANDARDS-CSA/CMVSS
- 1B1 CODES/STANDARDS USA

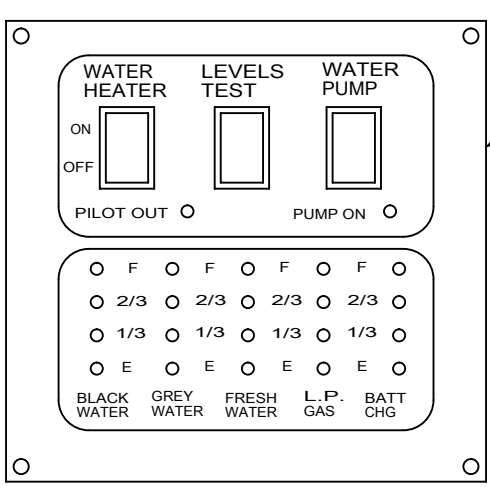
1B1 265

FIRST USED	
14 L34T	
DO NOT SCALE DRAWING	
TITLE: WIRING INSTL-BODY, 12V	
SHEET 7	PART NO 185724 REV

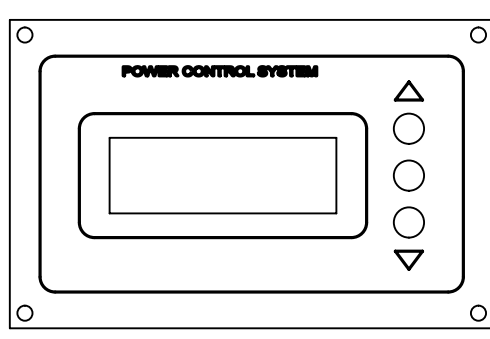
*185724 *A



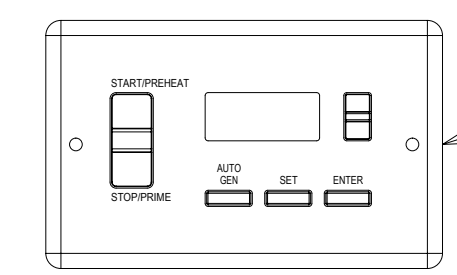
THERMOSTAT-HEAT PUMP/FURNACE
135618-01-CHT



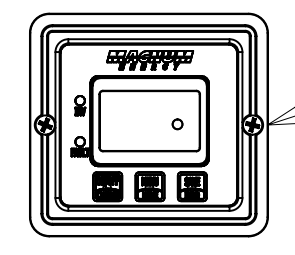
MONITOR-PANEL
134940-10-000
SCREW
G11-08-08U (4)



PANEL-MONITOR,
PCS 50 AMP
174384-06-000
SCREW
G11-08-08U (2)

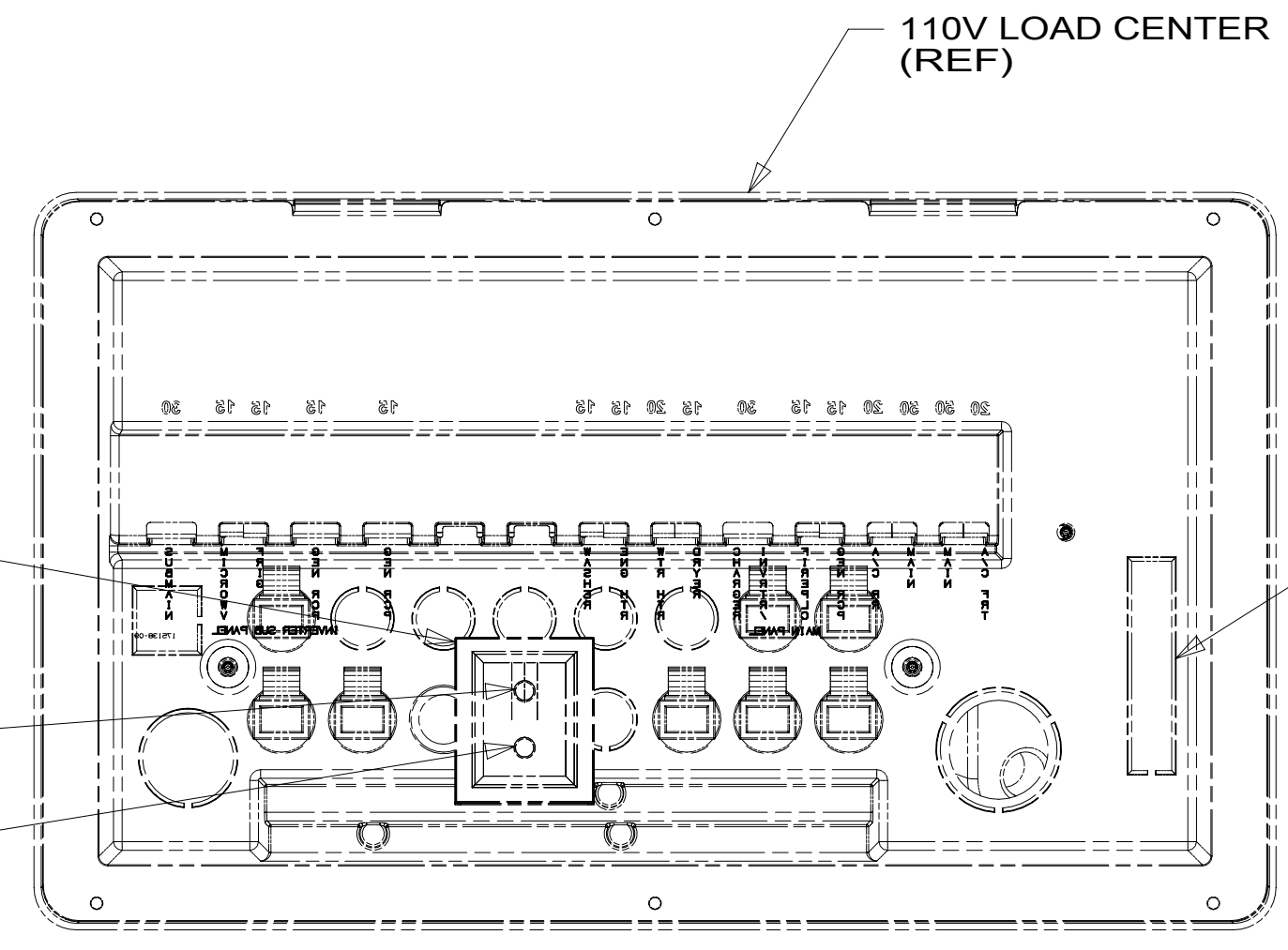


MODULE-AUTO GENERATOR START
158425-01-000

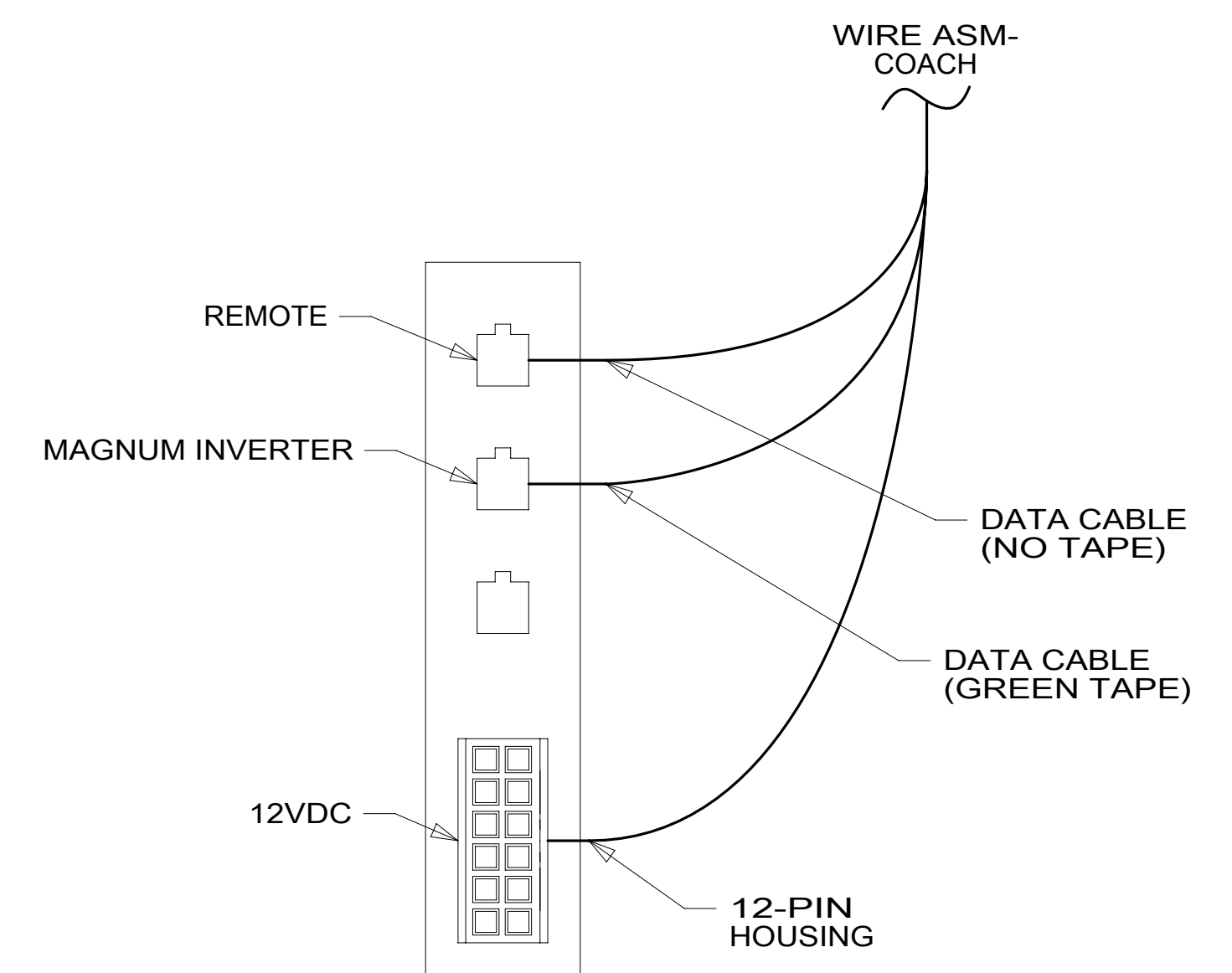


REMOTE PANEL-INVERTER
175385-02-000
SCREW
G11-08-08U (2)

DETAIL HA



VIEW HB



DETAIL HC

- NOTES:
- 3 SEE LOAD CENTER/ATS ASM FOR ADDITIONAL INFORMATION.
 - 2 SET 'BAT TYPE' TO 'FLOOD'
SET 'LBCO' TO '11VDC'
SET 'BAT AHRS' TO '400 AH'
SEE OPERATORS MANUAL FOR SETUP PROCEDURE.
 - 1 SET 'GEN TYPE' TO MATCH GENERATOR MODEL INSTALLED IN COACH.
SET 'SAFE TYPE' TO 'IGNITION'.
SEE OPERATORS MANUAL FOR SETUP PROCEDURE.

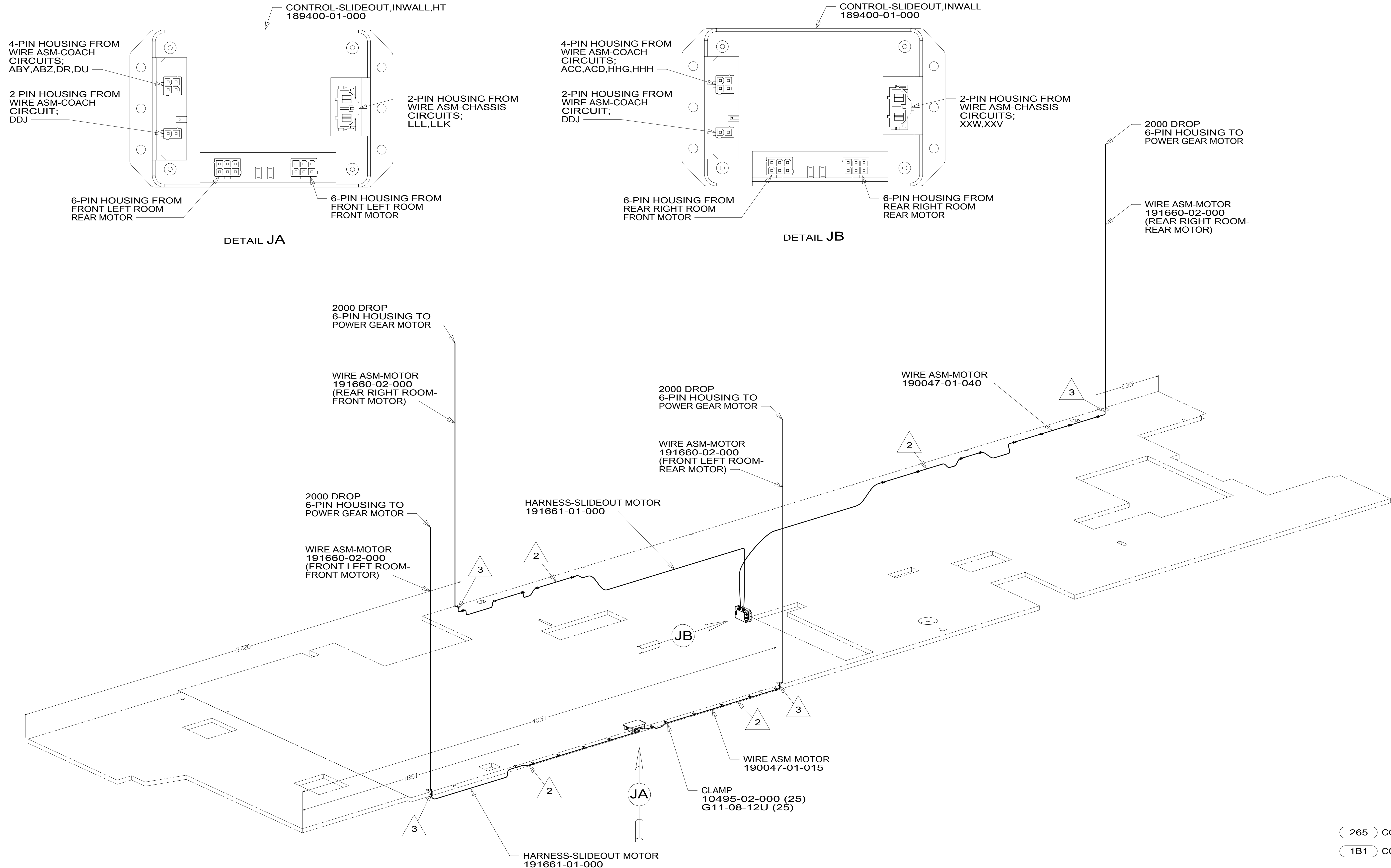
- 265 CODES/STANDARDS-CSA/CMVSS
- 1B1 CODES/STANDARDS USA

1B1	265
FIRST USED	
14 L34T	
DO NOT SCALE DRAWING	
TITLE: WIRING INSTL-BODY, 12V	
SHEET 8	PART NO 185724 REV
1 02-Nov-2015	

FOR ELECTRICAL TORQUE SPECIFICATIONS SEE DWG NO. 128783-01-000

FOR ELECTRICAL CALLOUTS SEE DWG NO. 121339-01-000

*185724 *A



- 3 WIRE IS ROUTED THROU FLOOR IN THIS AREA.
 2 WIRE IS ROUTED BELOW FLOOR.
1. ALL WIRES TO BE CLAMPED WITH CLAMP 10495-01-000 OR WIRE TIE 8343-02-000 EVERY 600MM, UNLESS OTHERWISE SPECIFIED.

NOTES:

265	CODES/STANDARDS-CSA/CMVSS
1B1	CODES/STANDARDS USA
1B1	265

FIRST USED	14 L34T
DO NOT SCALE DRAWING	
WIRING INSTL-BODY, 12V	
SHEET 9	PART NO 185724 REV

FOR ELECTRICAL TORQUE SPECIFICATIONS SEE DWG NO. 128783-01-000

FOR ELECTRICAL CALLOUTS SEE DWG NO. 121339-01-000

*185724 *A