



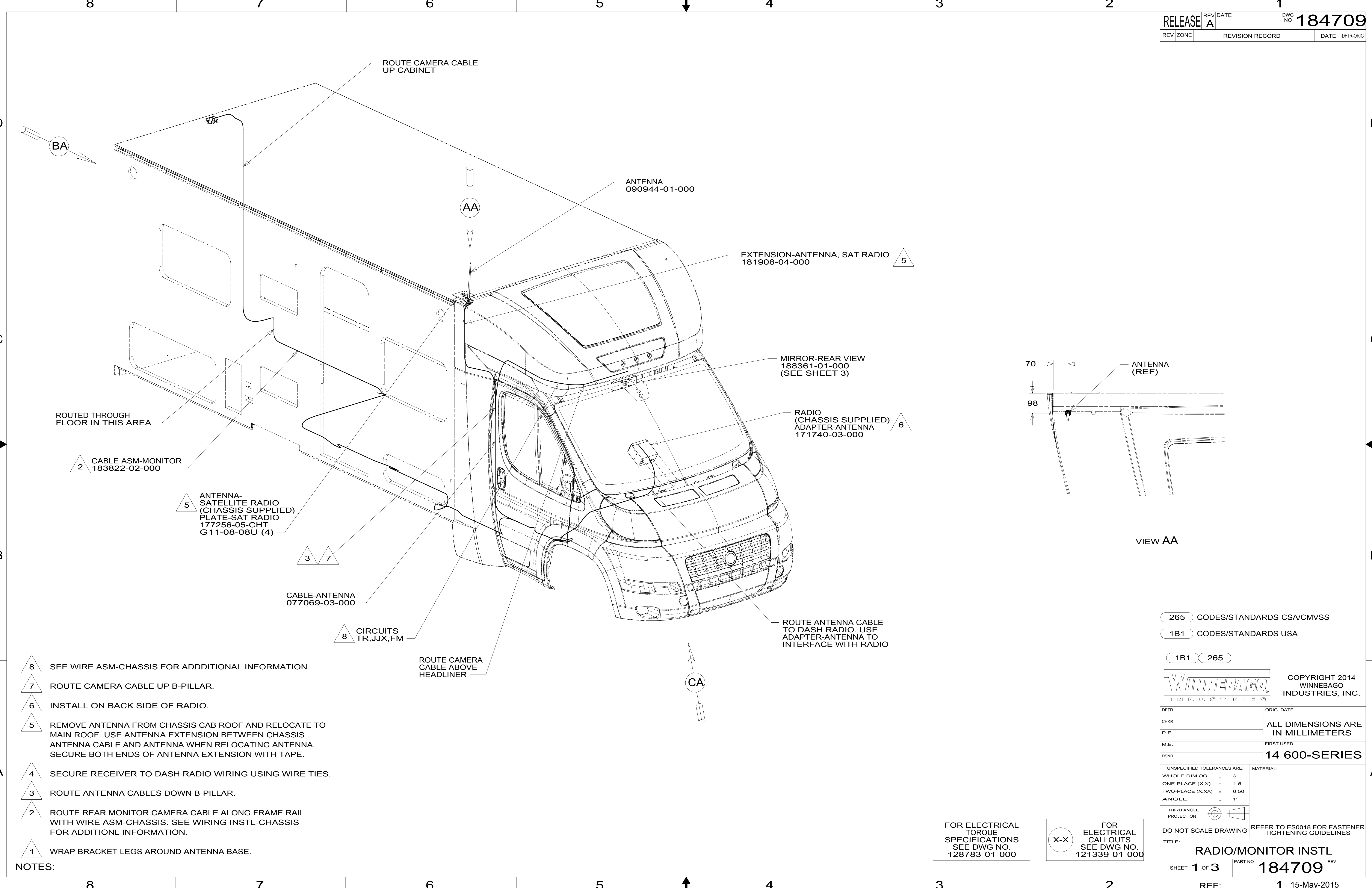
DANGER

Danger of electrical shock, burns or death. Always remove all power sources before attempting any repair, service or diagnostic work. Power can be present from shore power, generator, inverter or battery. All power sources must be disabled and secured before performing any service.



CAUTION

If you lack the skills, tools or equipment to perform diagnostic or repair work leave such work to an authorized Winnebago Industries dealer or other qualified shop.



ROUTE CAMERA CABLE UP CABINET

ANTENNA 090944-01-000

EXTENSION-ANTENNA, SAT RADIO 181908-04-000 5

MIRROR-REAR VIEW 188361-01-000 (SEE SHEET 3)

RADIO (CHASSIS SUPPLIED) ADAPTER-ANTENNA 171740-03-000 6

ROUTE ANTENNA CABLE TO DASH RADIO. USE ADAPTER-ANTENNA TO INTERFACE WITH RADIO

ROUTE CAMERA CABLE ABOVE HEADLINER

ROUTE ANTENNA CABLE TO DASH RADIO. USE ADAPTER-ANTENNA TO INTERFACE WITH RADIO

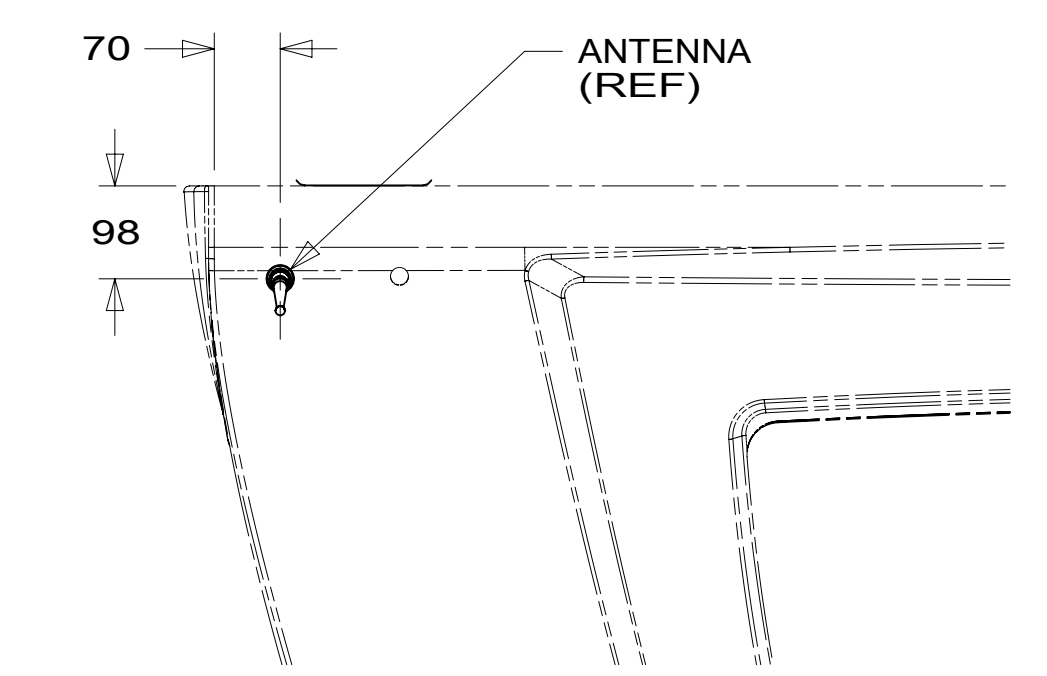
ROUTED THROUGH FLOOR IN THIS AREA

CABLE ASM-MONITOR 183822-02-000 2

ANTENNA-SATELLITE RADIO (CHASSIS SUPPLIED) PLATE-SAT RADIO 177256-05-CHT G11-08-08U (4) 5

CABLE-ANTENNA 077069-03-000 3 7

CIRCUITS TR,JJX,FM 8



VIEW AA

- NOTES:
- 8 SEE WIRE ASM-CHASSIS FOR ADDITIONAL INFORMATION.
 - 7 ROUTE CAMERA CABLE UP B-PILLAR.
 - 6 INSTALL ON BACK SIDE OF RADIO.
 - 5 REMOVE ANTENNA FROM CHASSIS CAB ROOF AND RELOCATE TO MAIN ROOF. USE ANTENNA EXTENSION BETWEEN CHASSIS ANTENNA CABLE AND ANTENNA WHEN RELOCATING ANTENNA. SECURE BOTH ENDS OF ANTENNA EXTENSION WITH TAPE.
 - 4 SECURE RECEIVER TO DASH RADIO WIRING USING WIRE TIES.
 - 3 ROUTE ANTENNA CABLES DOWN B-PILLAR.
 - 2 ROUTE REAR MONITOR CAMERA CABLE ALONG FRAME RAIL WITH WIRE ASM-CHASSIS. SEE WIRING INSTL-CHASSIS FOR ADDITIONL INFORMATION.
 - 1 WRAP BRACKET LEGS AROUND ANTENNA BASE.

265 CODES/STANDARDS-CSA/CMVSS
 1B1 CODES/STANDARDS USA
 1B1 265

		COPYRIGHT 2014 WINNEBAGO INDUSTRIES, INC.	
DFT-ORIG	ORIG. DATE	ALL DIMENSIONS ARE IN MILLIMETERS	
CHKR		FIRST USED	
P.E.		14 600-SERIES	
M.E.		MATERIAL:	
DSNR		UNSPECIFIED TOLERANCES ARE:	
		WHOLE DIM (X)	: 3
		ONE-PLACE (X.X)	: 1.5
		TWO-PLACE (X.XX)	: 0.50
		ANGLE	: 1°
THIRD ANGLE PROJECTION			
DO NOT SCALE DRAWING		REFER TO ES0018 FOR FASTENER TIGHTENING GUIDELINES	
TITLE: RADIO/MONITOR INSTL			
SHEET 1 OF 3	PART NO 184709	REV	
REF:	1	15-May-2015	

FOR ELECTRICAL TORQUE SPECIFICATIONS SEE DWG NO. 128783-01-000

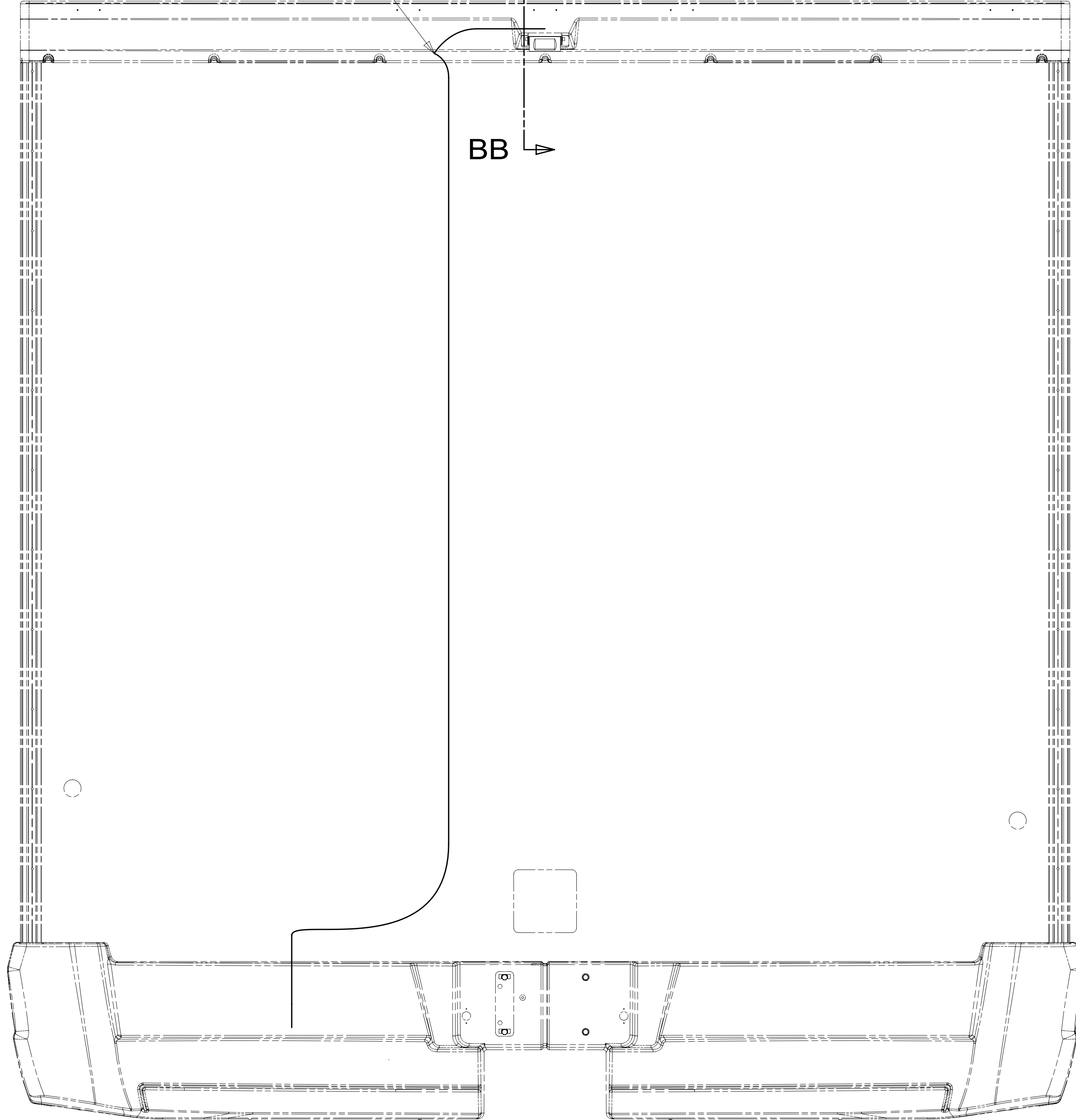
X-X FOR ELECTRICAL CALLOUTS SEE DWG NO. 121339-01-000

184709

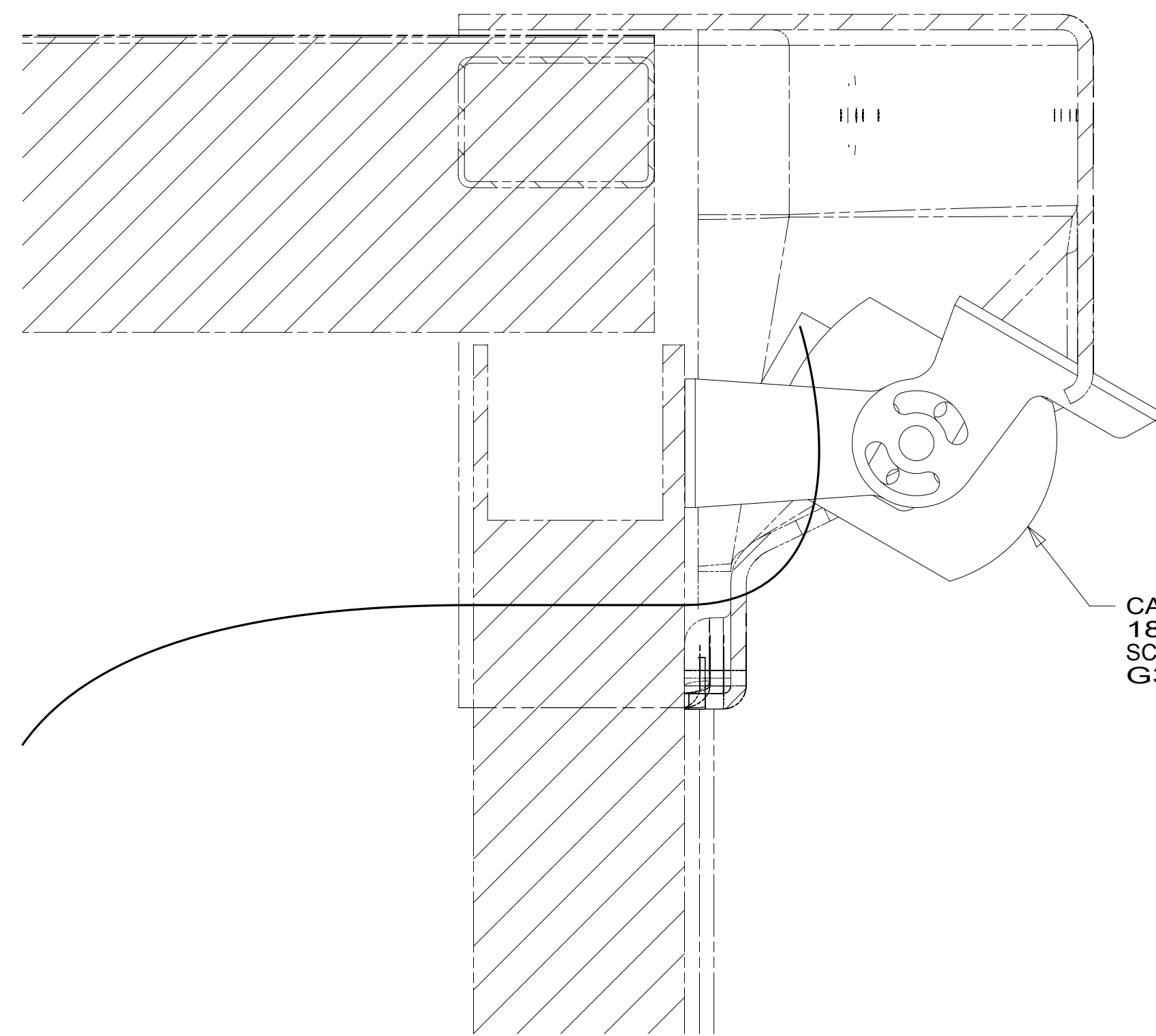
ROUTE CAMERA CABLE THROUGH BACKWALL

BB

BB



VIEW BA



CAMERA-REAR VIEW
183822-01-000
SCREW
G39-10-12U (5)

SECTION BB-BB

265 CODES/STANDARDS-CSA/CMVSS

1B1 CODES/STANDARDS USA

1B1 265

FIRST USED
14 600-SERIES

DO NOT SCALE DRAWING

TITLE:
RADIO/MONITOR INSTL

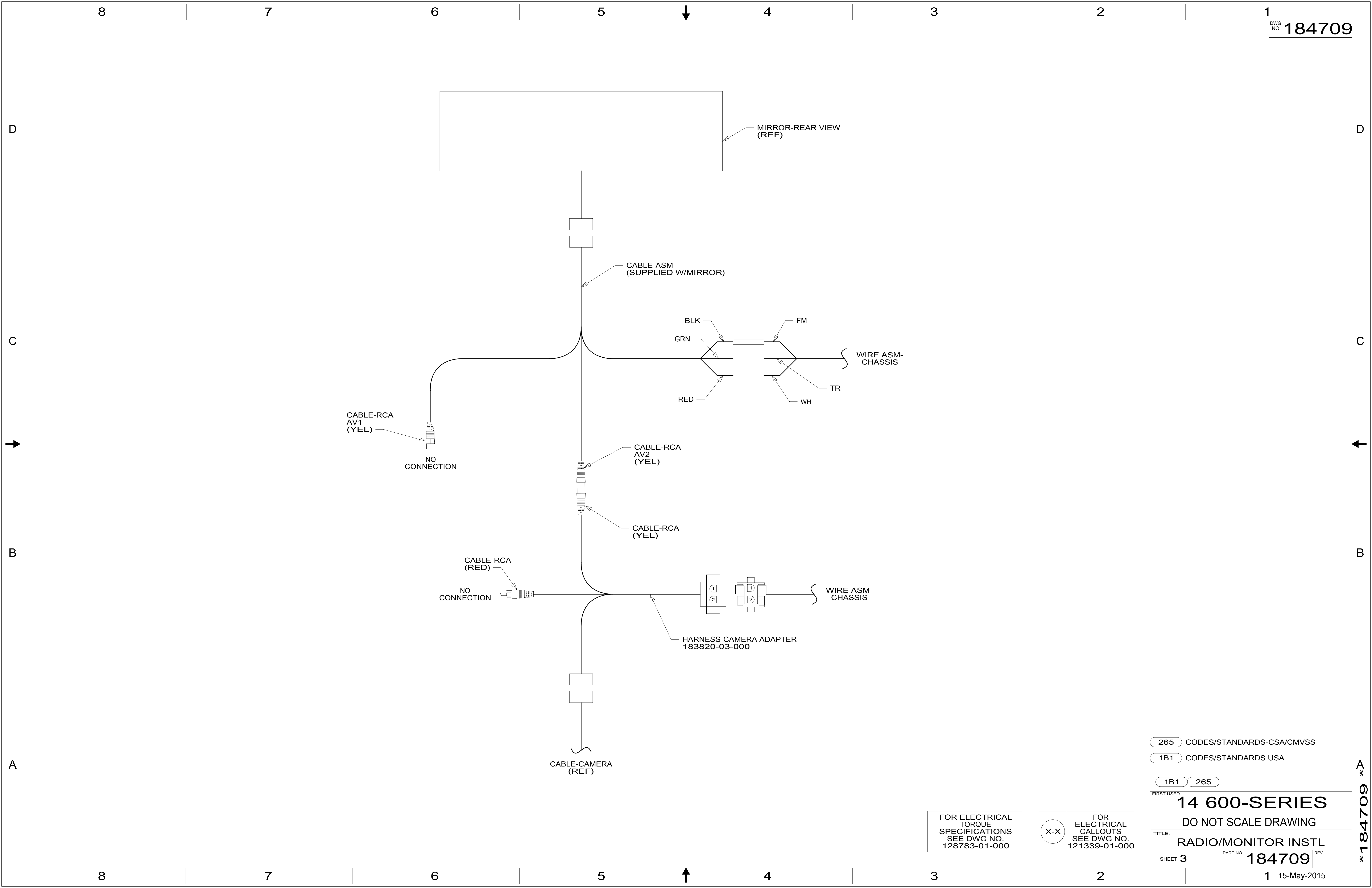
SHEET 2 PART NO **184709** REV

1 15-May-2015

FOR ELECTRICAL
TORQUE
SPECIFICATIONS
SEE DWG NO.
128783-01-000

X-X
FOR
ELECTRICAL
CALLOUTS
SEE DWG NO.
121339-01-000

*184709 *A



265 CODES/STANDARDS-CSA/CMVSS

1B1 CODES/STANDARDS USA

1B1 265

FIRST USED
14 600-SERIES

DO NOT SCALE DRAWING

TITLE:
RADIO/MONITOR INSTL

SHEET 3 PART NO **184709** REV

FOR ELECTRICAL TORQUE SPECIFICATIONS SEE DWG NO. 128783-01-000

X-X FOR ELECTRICAL CALLOUTS SEE DWG NO. 121339-01-000

184709