



DANGER

Danger of electrical shock, burns or death. Always remove all power sources before attempting any repair, service or diagnostic work. Power can be present from shore power, generator, inverter or battery. All power sources must be disabled and secured before performing any service.



CAUTION

If you lack the skills, tools or equipment to perform diagnostic or repair work leave such work to an authorized Winnebago Industries dealer or other qualified shop.

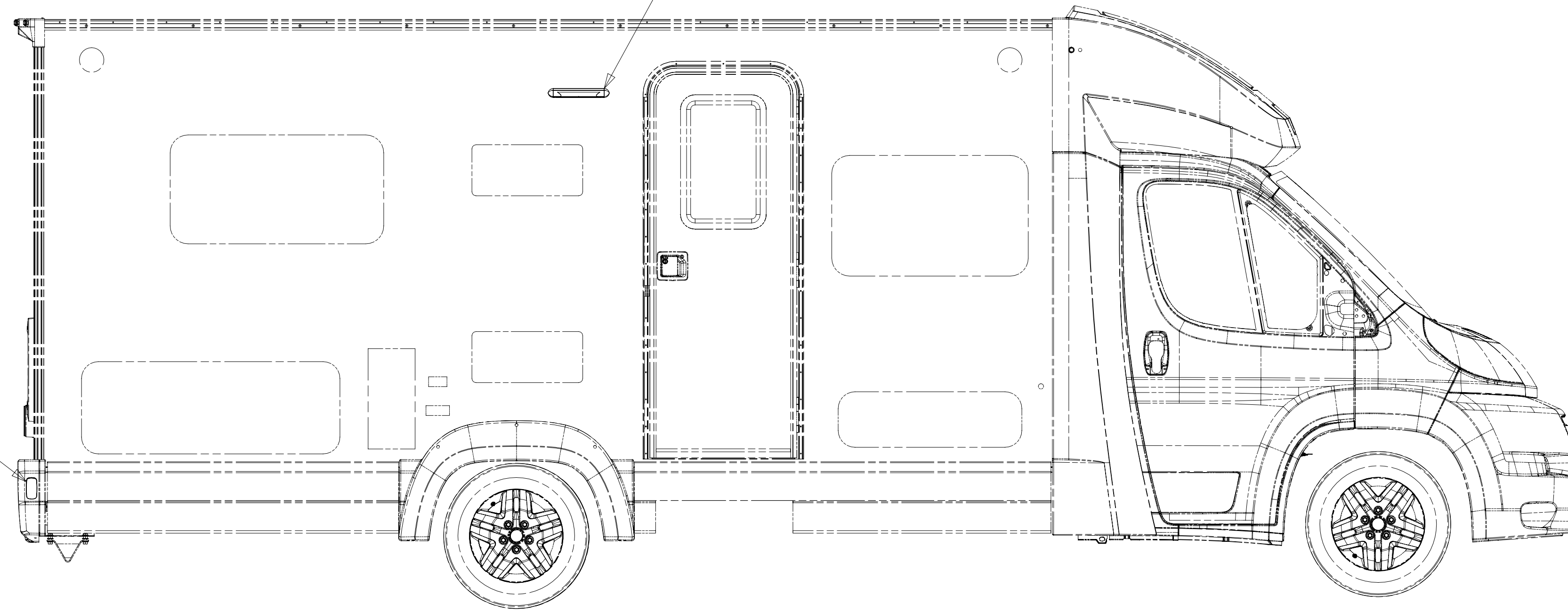
8 7 6 5 4 3 2 1

LAMP ASM-PORCH
184120-01-CHT
SCREW
G68-06-10U (2)
CONNECTOR
58028-01-000 (2)

BB

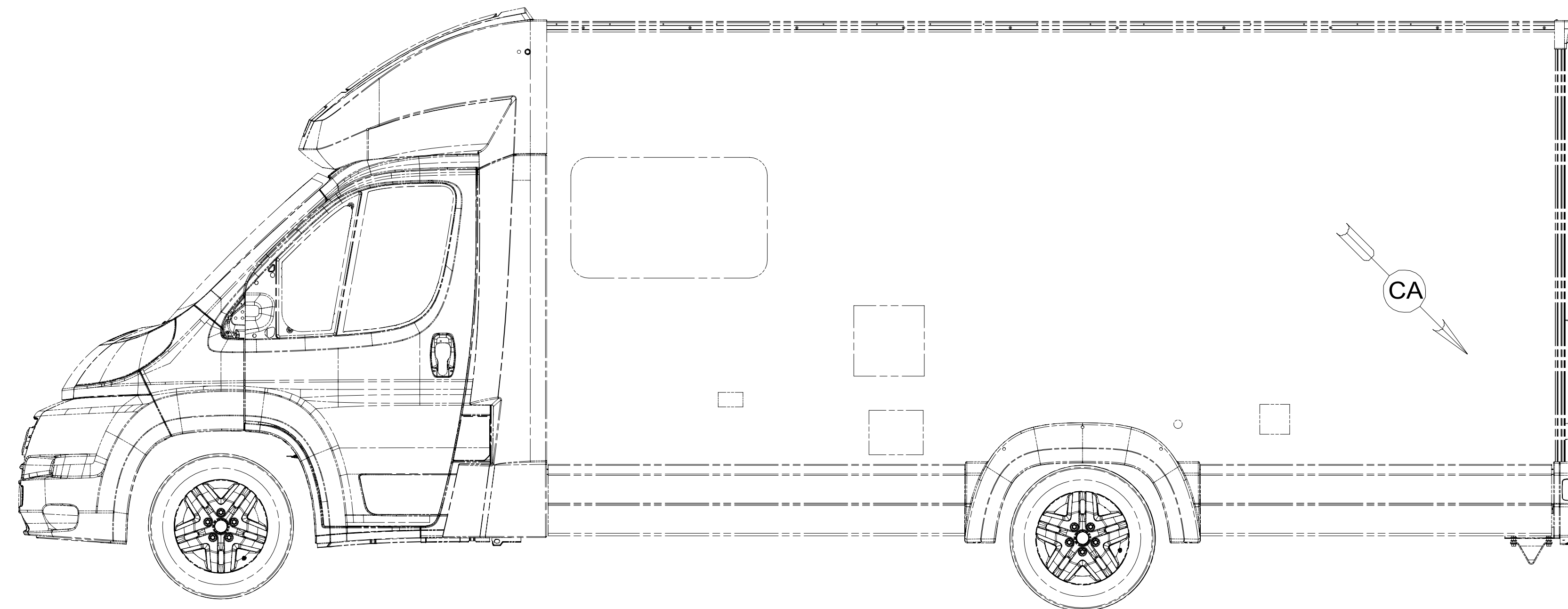
BA

LAMP-MARKER,
W RED LENS,BLK
193802-04-000
GASKET-LIGHT
193802-05-000
SCREW
G11-08-12U (EXT)(2)



CA

LAMP-MARKER,
W RED LENS,BLK
193802-04-000
GASKET-LIGHT
193802-05-000
SCREW
G11-08-12U (EXT)(2)



- 265 CODES/STANDARDS-CSA/CMVSS
- 1B1 CODES/STANDARDS USA
- 1B1 265

WINNEBAGO COPYRIGHT 2014
WINNEBAGO
INDUSTRIES, INC.

DFT-ORIG	ORIG. DATE
CHKR	ALL DIMENSIONS ARE IN MILLIMETERS
P.E.	
M.E.	FIRST USED
DSNR	14 600-SER
UNSPECIFIED TOLERANCES ARE:	
WHOLE DIM (X)	: 3
ONE-PLACE (X.X)	: 1.5
TWO-PLACE (X.XX)	: 0.50
ANGLE	: 1°
THIRD ANGLE PROJECTION	

FOR ELECTRICAL
TORQUE
SPECIFICATIONS
SEE DWG NO.
128783-01-000

FOR
ELECTRICAL
CALLOUTS
SEE DWG NO.
121339-01-000

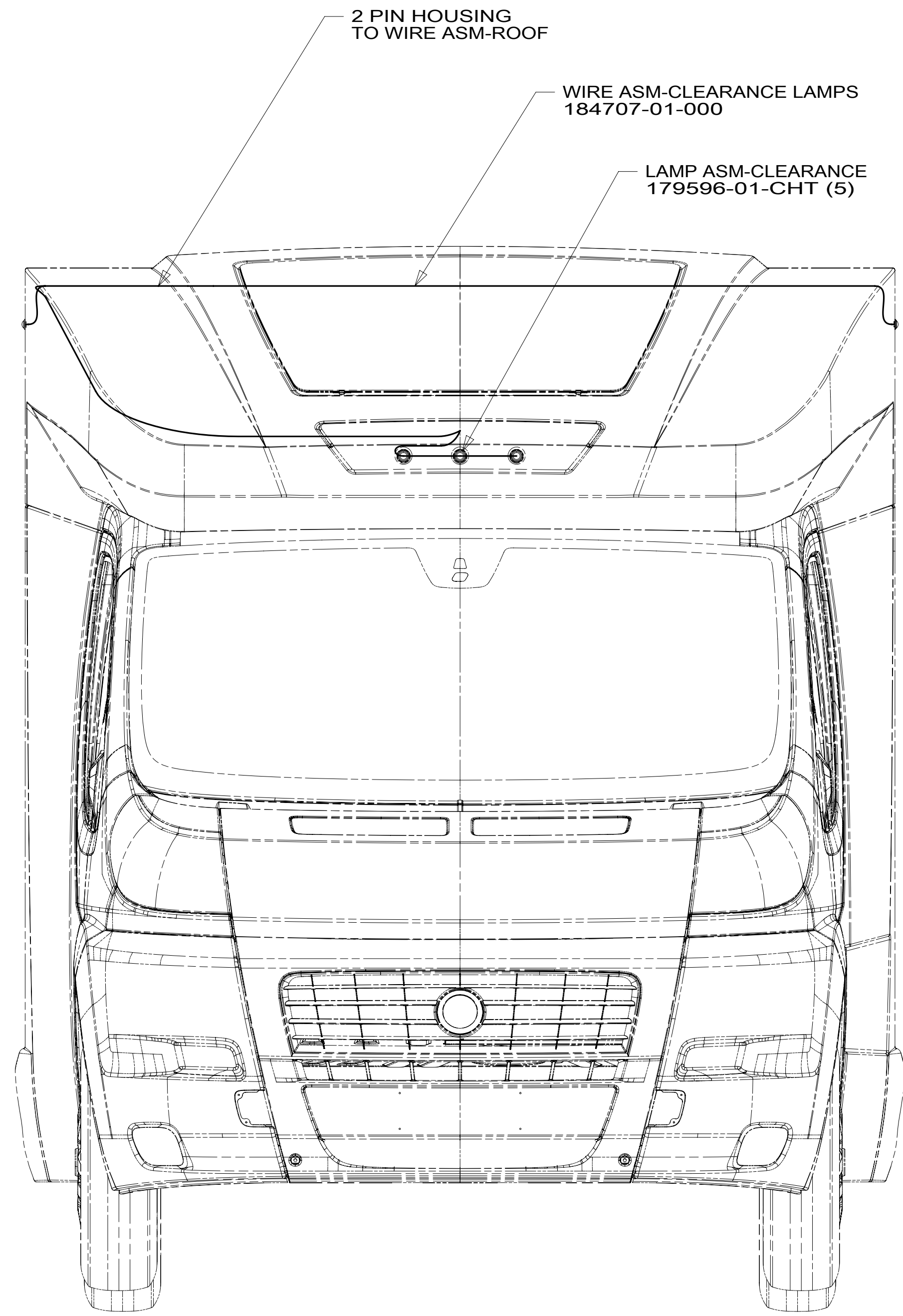
DO NOT SCALE DRAWING REFER TO ES0018 FOR FASTENER
TIGHTENING GUIDELINES

TITLE:
WIRING INSTL-EXTERIOR LAMPS

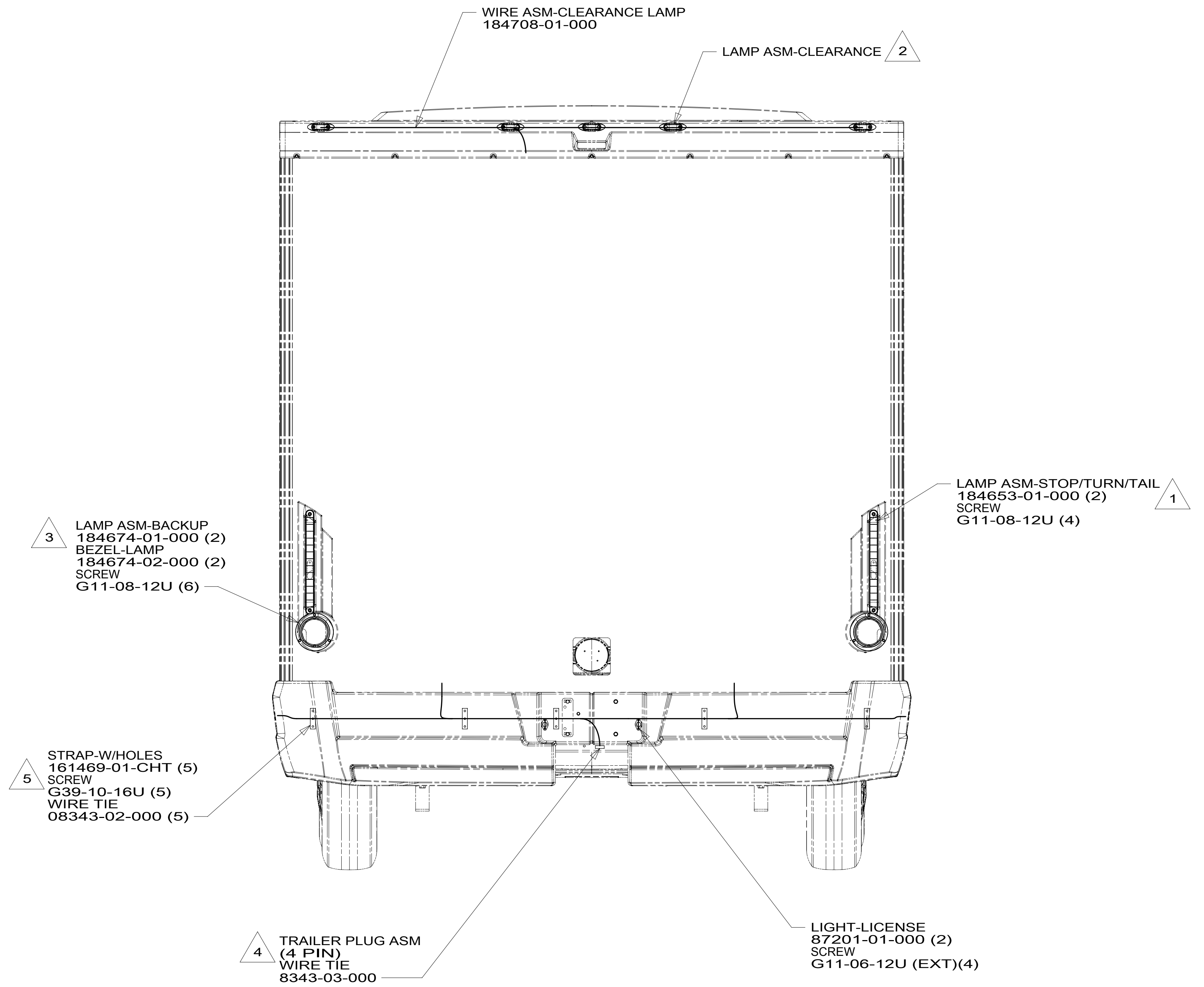
SHEET **1** OF **3** PART NO **184533** REV

8 7 6 5 4 3 2 1

*184533 *A



VIEW BA



VIEW BB

- NOTES:
- 5 CLAMP TRAILER HITCH AND EXTERIOR LAMP WIRE ALONG BOTTOM OF BACKWALL ASSEMBLY.
 - 4 WIRE TIE 4-PIN TRAILER PLUG TO HITCH ASSEMBLY NEAR RECEIVER.
 - 3 CUT CONNECTOR OFF OF LIGHT ASM. CONNECT CIRCUIT TR TO BLACK WIRE, CONNECT CIRCUIT MS TO WHITE WIRE.
 - 2 SEE TRIM ASM-BACKWALL, UPPER FOR ADDITIONAL INFORMATION.
 - 1 CONNECT CIRCUIT SC OR SD TO RED WIRE, CONNECT CIRCUIT MM TO BROWN WIRE, CONNECT CIRCUIT MS TO WHITE WIRE.

265 CODES/STANDARDS-CSA/CMVSS

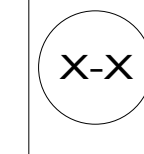
1B1 CODES/STANDARDS USA

1B1 265

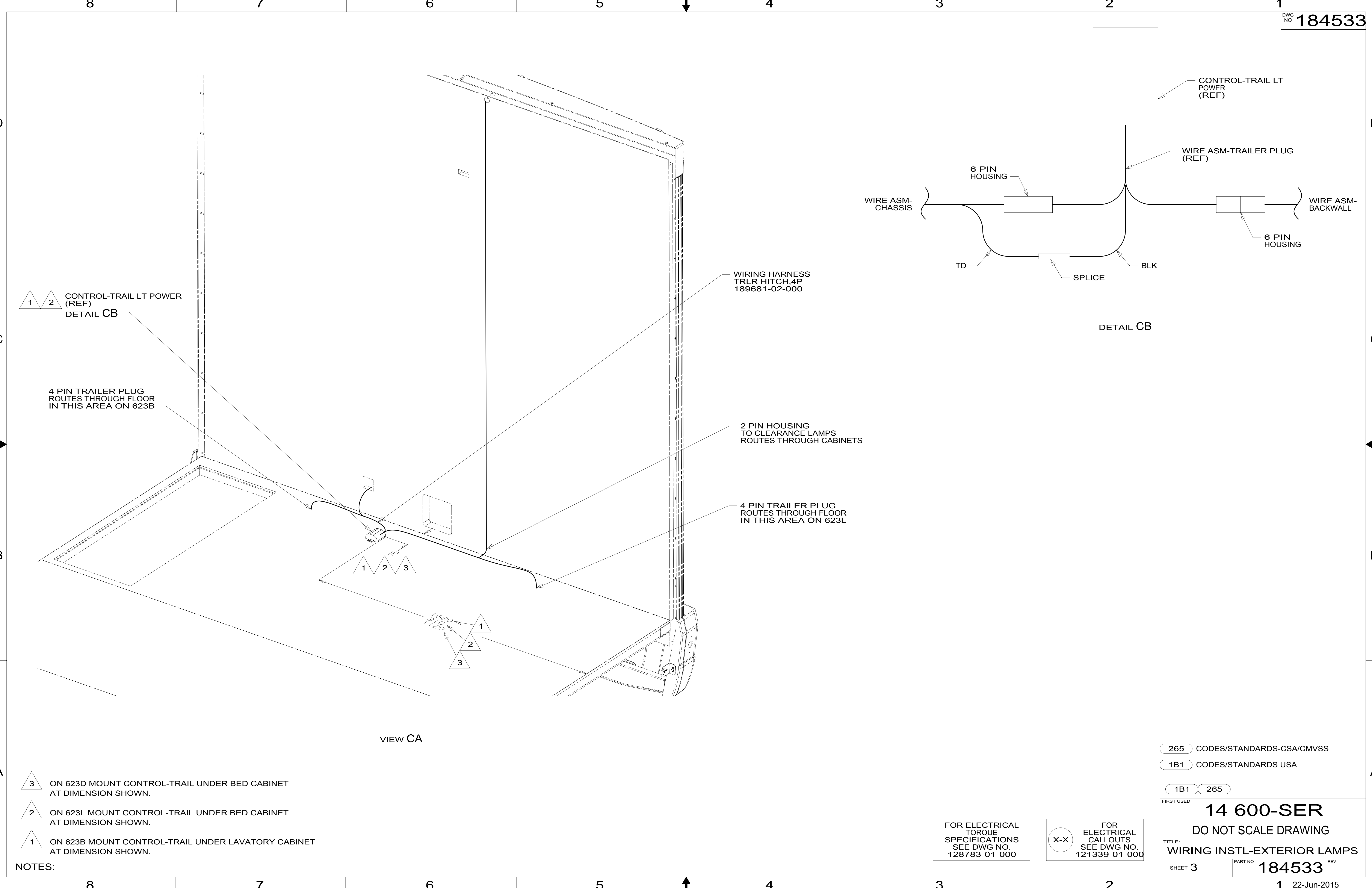
FIRST USED	
14 600-SER	
DO NOT SCALE DRAWING	
TITLE: WIRING INSTL-EXTERIOR LAMPS	
SHEET 2	PART NO 184533 REV

FOR ELECTRICAL TORQUE SPECIFICATIONS SEE DWG NO. 128783-01-000

FOR ELECTRICAL CALLOUTS SEE DWG NO. 121339-01-000



*184533 *A



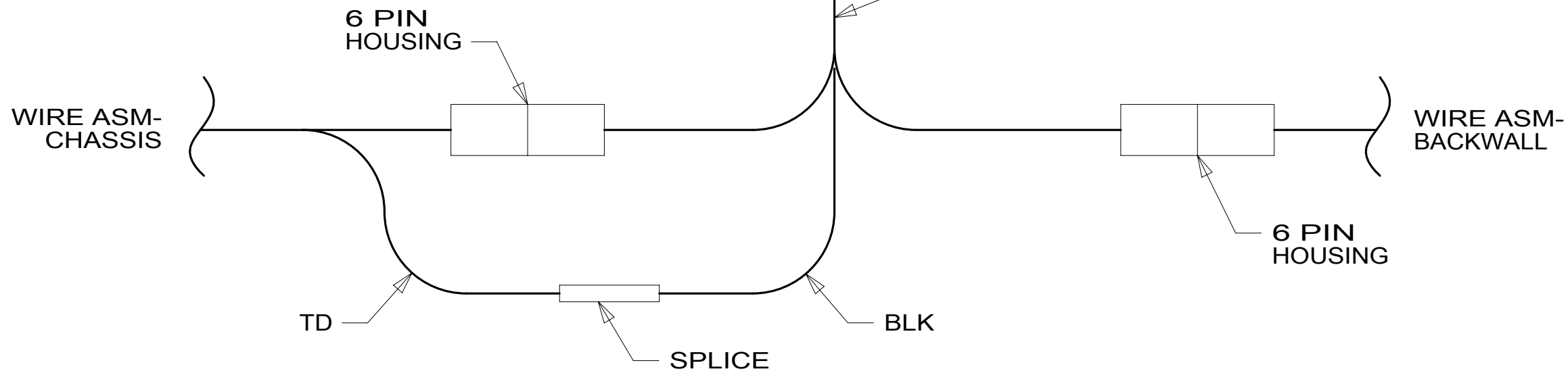
1 2 CONTROL-TRAIL LT POWER (REF) DETAIL CB

4 PIN TRAILER PLUG ROUTES THROUGH FLOOR IN THIS AREA ON 623B

WIRING HARNESS-TRLR HITCH, 4P 189681-02-000

2 PIN HOUSING TO CLEARANCE LAMPS ROUTES THROUGH CABINETS

4 PIN TRAILER PLUG ROUTES THROUGH FLOOR IN THIS AREA ON 623L



DETAIL CB

VIEW CA

- NOTES:
- 3 ON 623D MOUNT CONTROL-TRAIL UNDER BED CABINET AT DIMENSION SHOWN.
 - 2 ON 623L MOUNT CONTROL-TRAIL UNDER BED CABINET AT DIMENSION SHOWN.
 - 1 ON 623B MOUNT CONTROL-TRAIL UNDER LAVATORY CABINET AT DIMENSION SHOWN.

FOR ELECTRICAL TORQUE SPECIFICATIONS SEE DWG NO. 128783-01-000

FOR ELECTRICAL CALLOUTS SEE DWG NO. 121339-01-000

- 265 CODES/STANDARDS-CSA/CMVSS
- 1B1 CODES/STANDARDS USA

1B1	265
FIRST USED	
14 600-SER	
DO NOT SCALE DRAWING	
TITLE: WIRING INSTL-EXTERIOR LAMPS	
SHEET 3	PART NO 184533 REV

*184533 *A