



**DANGER**

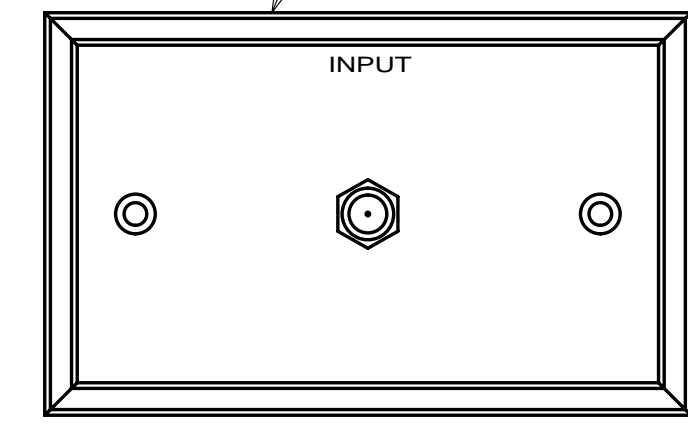
**Danger of electrical shock, burns or death.** Always remove all power sources before attempting any repair, service or diagnostic work. Power can be present from shore power, generator, inverter or battery. All power sources must be disabled and secured before performing any service.



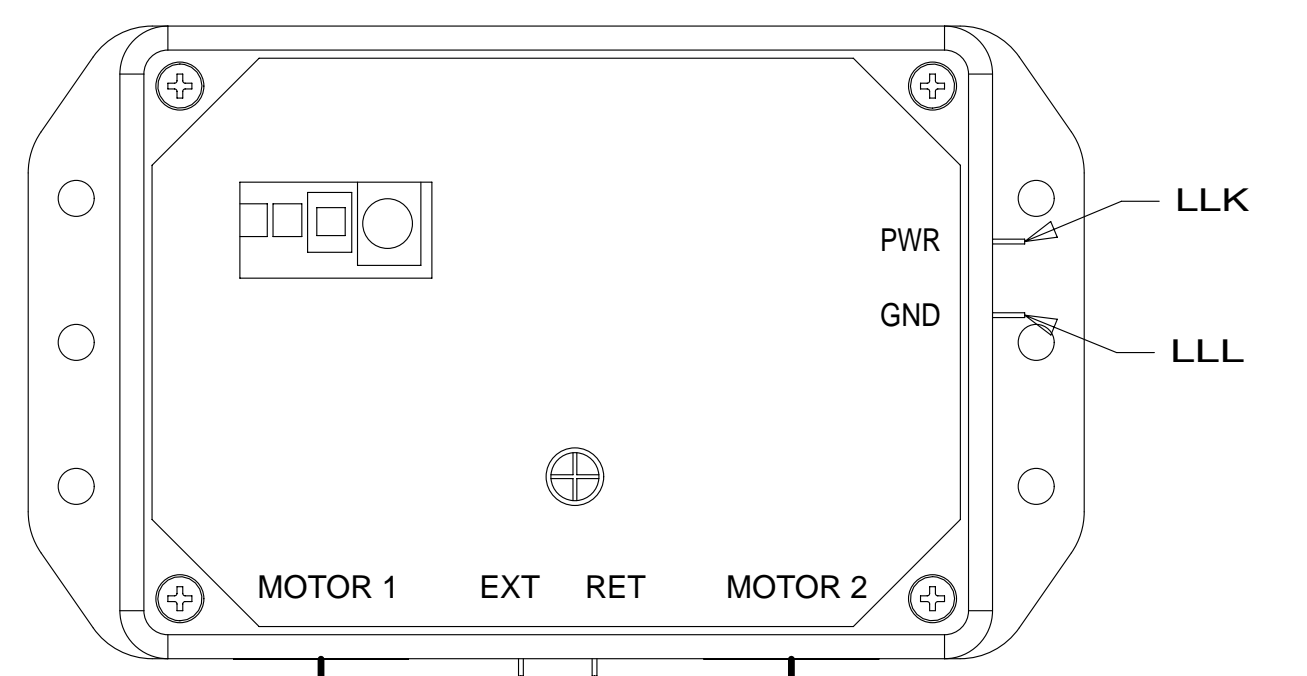
**CAUTION**

If you lack the skills, tools or equipment to perform diagnostic or repair work leave such work to an authorized Winnebago Industries dealer or other qualified shop.

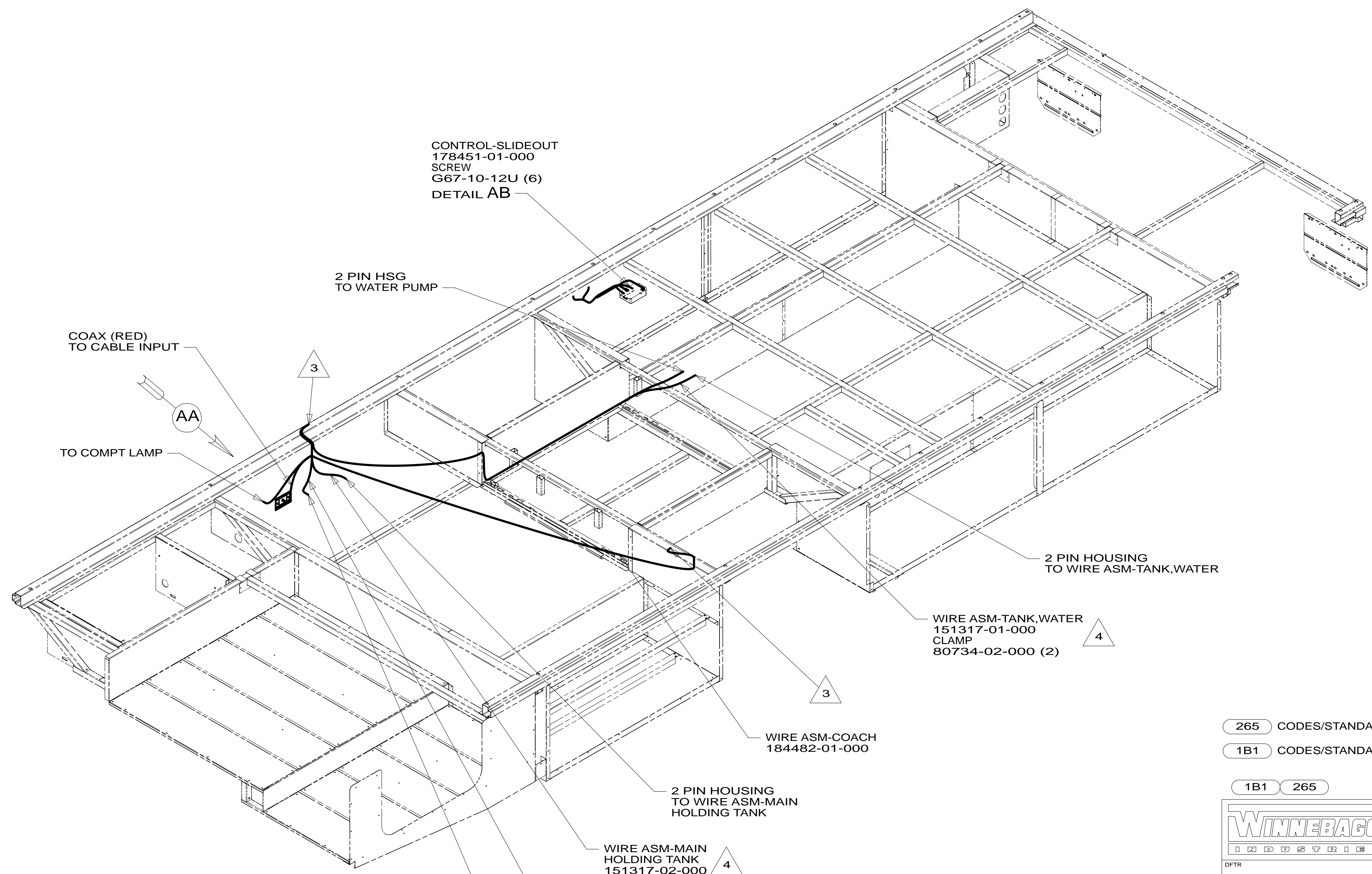
PLATE-WALL, DUAL COAX  
 149557-07-CHT  
 SCREW  
 G39-08-08U (2)



VIEW AA

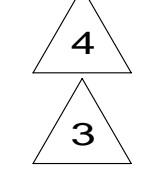


DETAIL AB



ROUTE TO REAR MOTOR  
 ROUTE TO FRONT MOTOR

- NOTES:
1. ALL WIRES TO BE SECURED WITH CLAMP 10495 OR 10497 OR WIRE TIE 8343 OR 108046 EVERY 600MM, USE SCREW G67-XX-XXX OR G56-XX-XXX AS APPROPRIATE FOR INSTALLATION.
  2. ROUTE TANK SENSOR WIRES SO THEY DO NOT PASS OVER SENSORS. USE WIRE TIE MOUNT 155366-01-000 AND WIRE TIE 8343-01-000 AS NEEDED. TANK SURFACE MUST BE CLEANED USING ISOPROPYL ALCOHOL AND PRIMED WITH PRIMER 94.



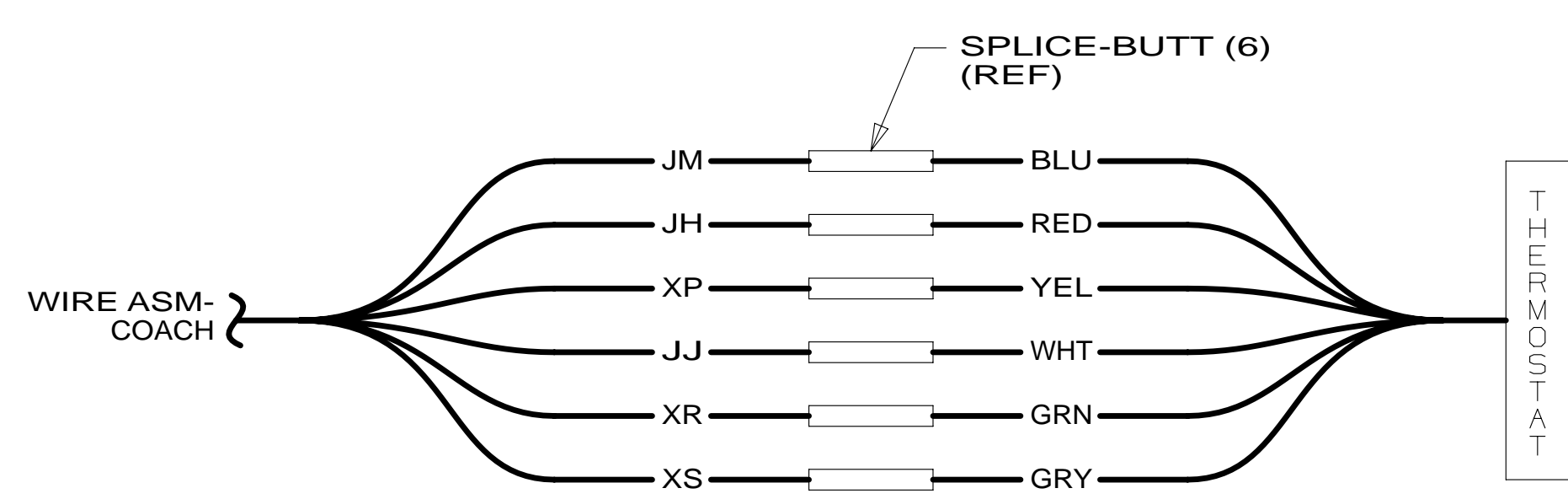
FOR ELECTRICAL TORQUE SPECIFICATIONS SEE DWG NO. 128783-01-000

FOR ELECTRICAL CALLOUTS SEE DWG NO. 121339-01-000

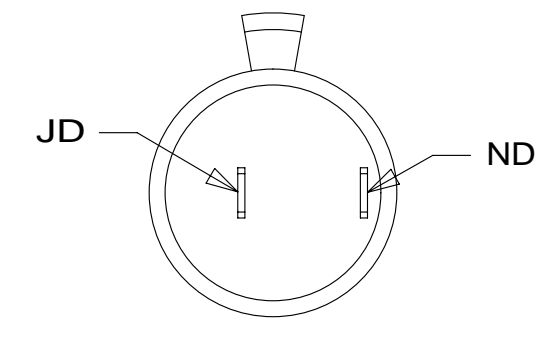
- 265 CODES/STANDARDS-CSA/CMVSS
- 1B1 CODES/STANDARDS USA
- 1B1 265

		COPYRIGHT 2014 WINNEBAGO INDUSTRIES, INC.
DFTR	ORIG. DATE	
CHKR	ALL DIMENSIONS ARE IN MILLIMETERS	
P.E.		
M.E.	FIRST USED	
DSNR	<b>14 E31KE</b>	
UNSPECIFIED TOLERANCES ARE:		MATERIAL:
WHOLE DIM (X)	: 3	
ONE-PLACE (X.X)	: 1.5	
TWO-PLACE (X.XX)	: 0.50	
ANGLE	: 1°	
THIRD ANGLE PROJECTION		
DO NOT SCALE DRAWING		REFER TO ES0018 FOR FASTENER TIGHTENING GUIDELINES
TITLE: <b>WIRING INSTL-BODY, 12V</b>		
SHEET 1 OF 7	PART NO. <b>184479</b>	REV
REF:	1	09-Jul-2014

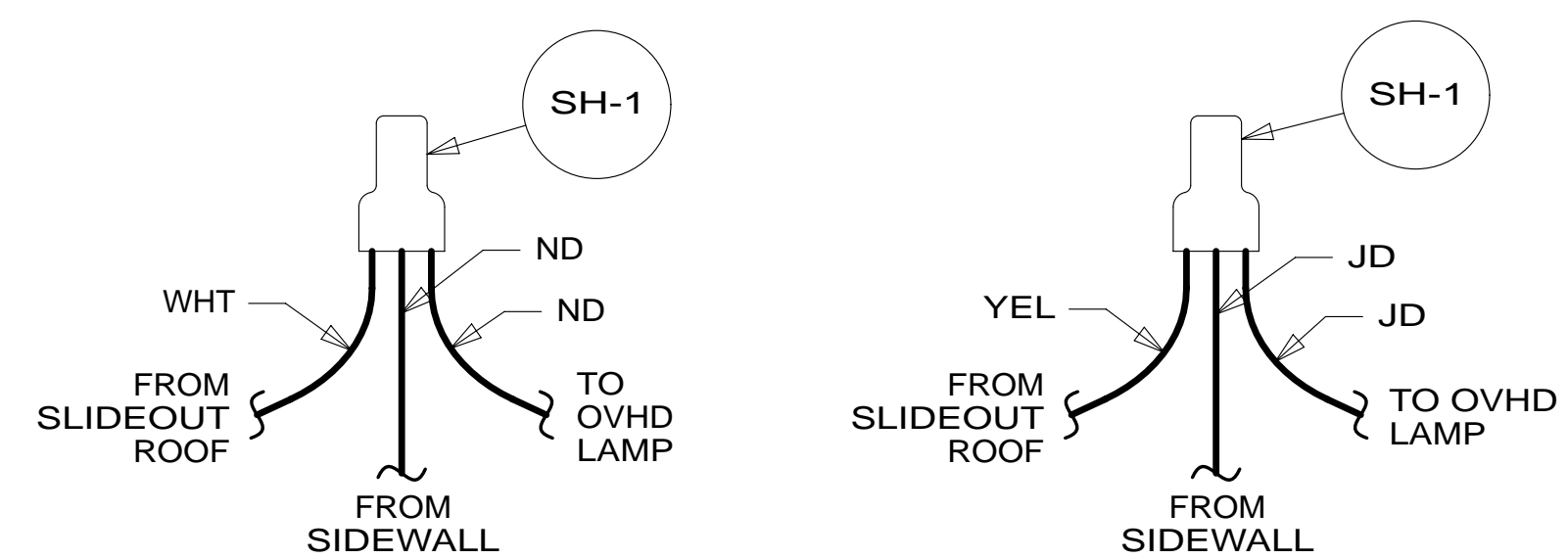
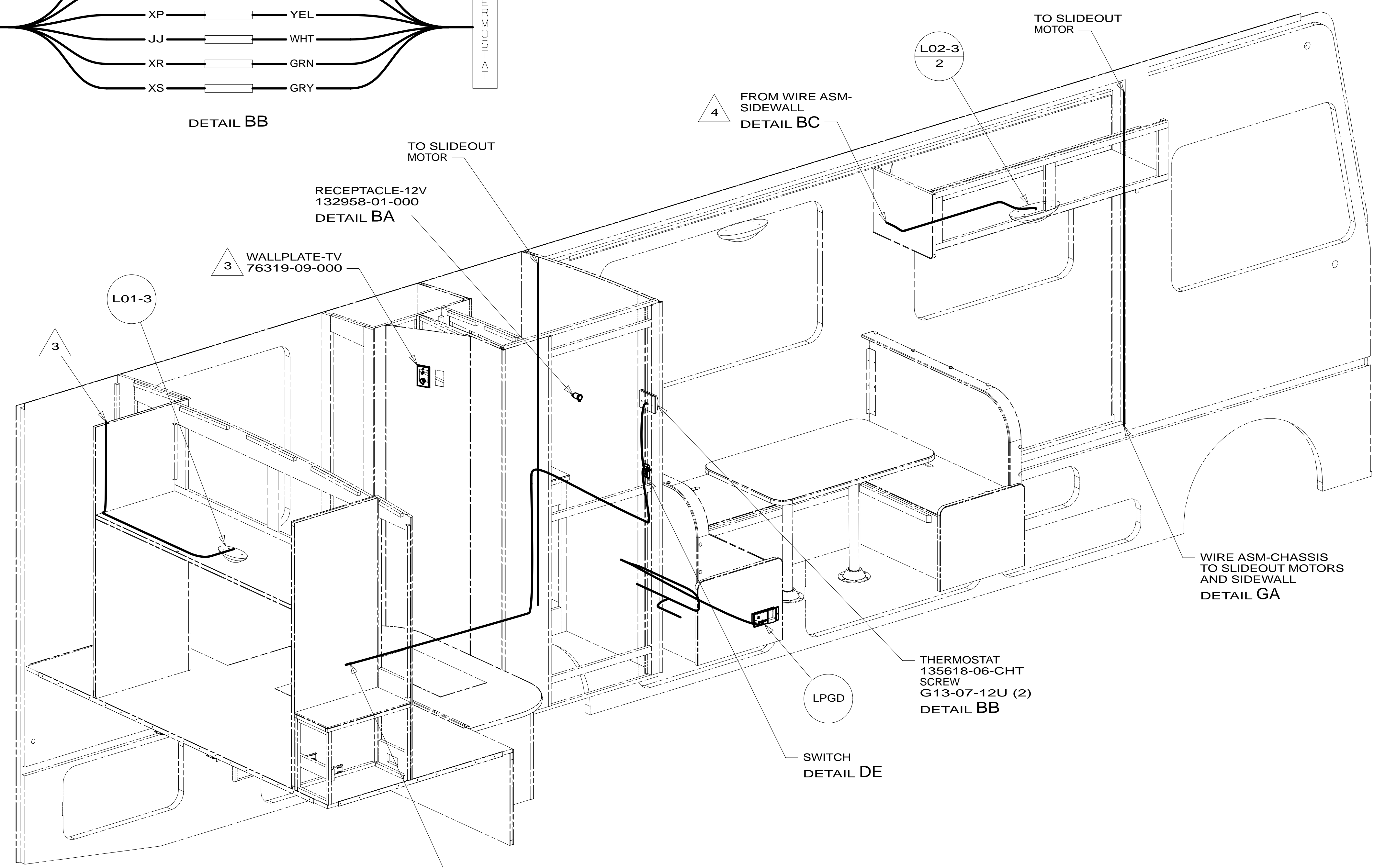
\* 184479 \*



DETAIL BB



DETAIL BA



DETAIL BC

- 4 CUT THE JD,ND WIRES FROM THE SIDEWALL AND RECONNECT AS SHOWN IN DETAIL BC.
- 3 WIRE FROM ROOF.
- 2 WIRE PASSES THROUGH FLOOR IN THIS AREA.

1. ALL WIRES TO BE SECURED WITH CLAMP 10495 OR 10497 OR WIRE TIE 8343 OR 108046 EVERY 600MM, USE SCREW G67-XX-XXX OR G56-XX-XXX AS APPROPRIATE FOR INSTALLATION.

NOTES:

265 CODES/STANDARDS-CSA/CMVSS  
 1B1 CODES/STANDARDS USA

1B1 265

FIRST USED **14 E31KE**

DO NOT SCALE DRAWING

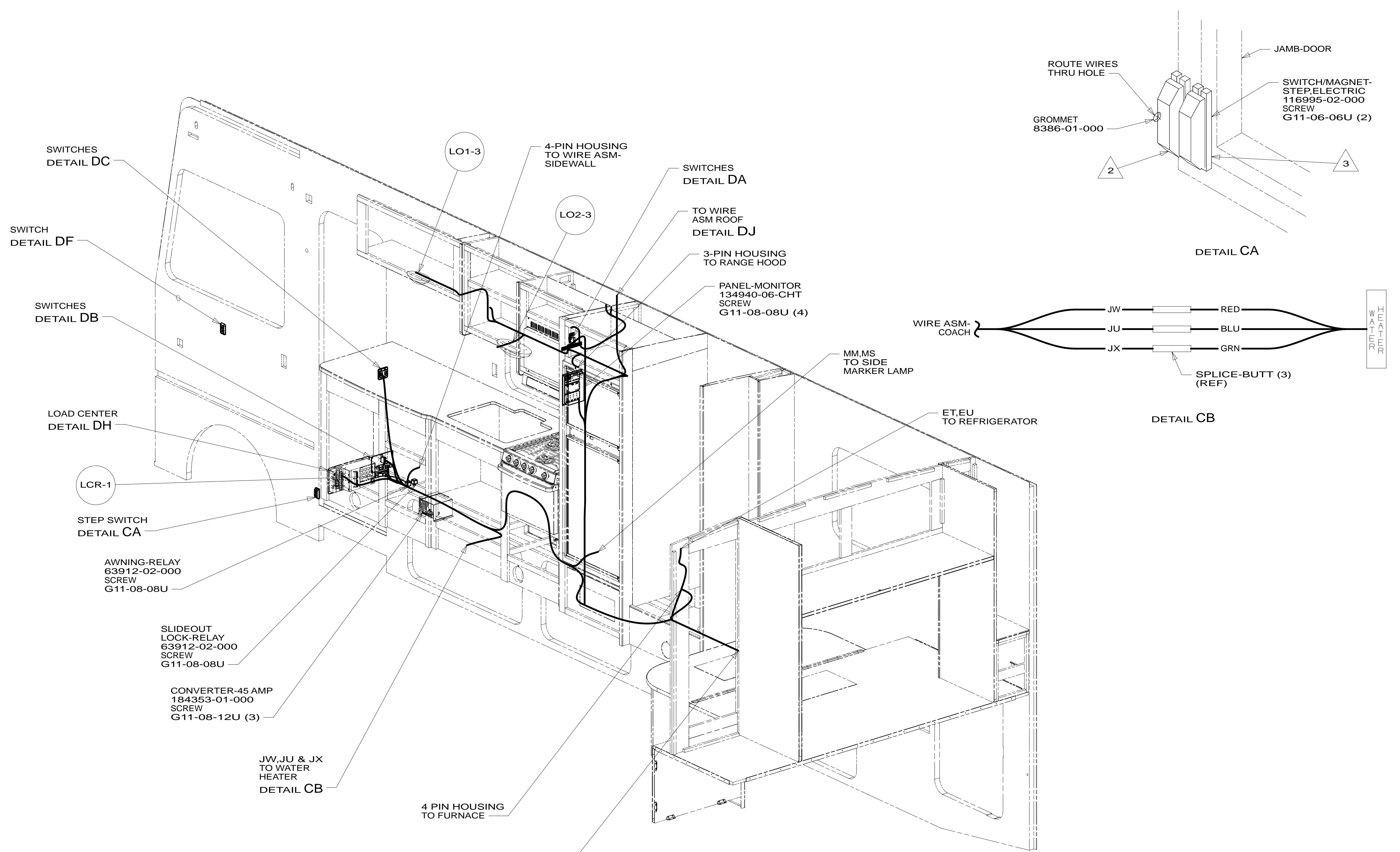
TITLE: **WIRING INSTL-BODY,12V**

SHEET 2 PART NO **184479** REV

FOR ELECTRICAL TORQUE SPECIFICATIONS SEE DWG NO. 128783-01-000

FOR ELECTRICAL CALLOUTS SEE DWG NO. 121339-01-000

\* 184479 \* A



- 4 WIRE PASSES THROUGH FLOOR IN THIS AREA.
- 3 MOUNT MAGNET TO SCREEN DOOR FRAME, MOUNT WITH MAGNET TOWARD SWITCH.
- 2 MOUNT SWITCH TO DOOR JAMB WITH TAPE 076322-21-000.

1. ALL WIRES TO BE SECURED WITH CLAMP 10495 OR 10497 OR WIRE TIE 8343 OR 108046 EVERY 600MM, USE SCREW G67-XX-XXX OR G56-XX-XXX AS APPROPRIATE FOR INSTALLATION.

NOTES:

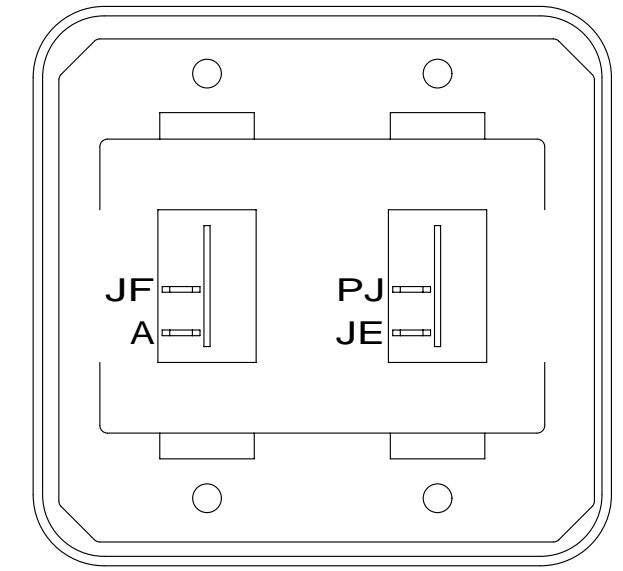
- 265 CODES/STANDARDS-CSA/CMVSS
- 1B1 CODES/STANDARDS USA
- 1B1 265

FOR ELECTRICAL TORQUE SPECIFICATIONS SEE DWG NO. 128783-01-000

FOR ELECTRICAL CALLOUTS SEE DWG NO. 121339-01-000

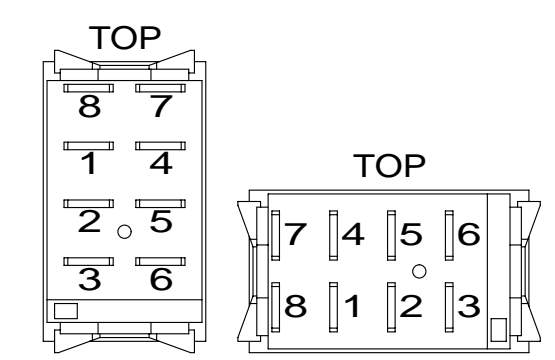
FIRST USED	
<b>14 E31KE</b>	
DO NOT SCALE DRAWING	
TITLE: <b>WIRING INSTL-BODY, 12V</b>	
SHEET 3	PART NO <b>184479</b> REV
09-Jul-2014	

\* 184479 \* A

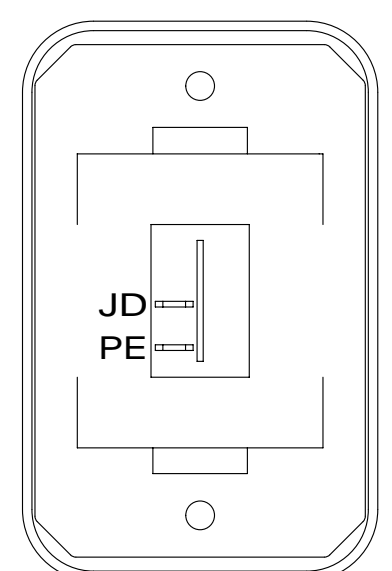


SWITCH-ROCKER  
135740-01-CHT (2)  
SWITCH-BASE  
135741-02-CHT  
SWITCH-BEZEL  
135742-02-CHT  
SCREW  
G11-08-08U (4)

DETAIL DC

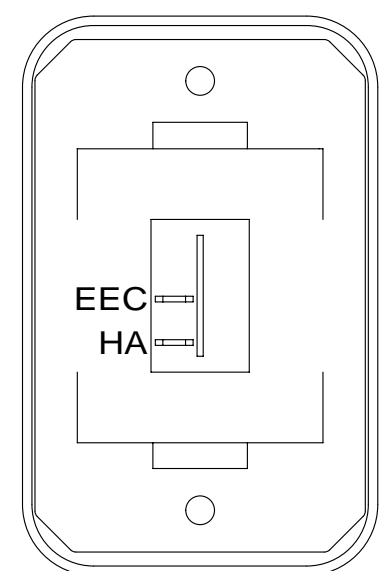


DETAIL DD



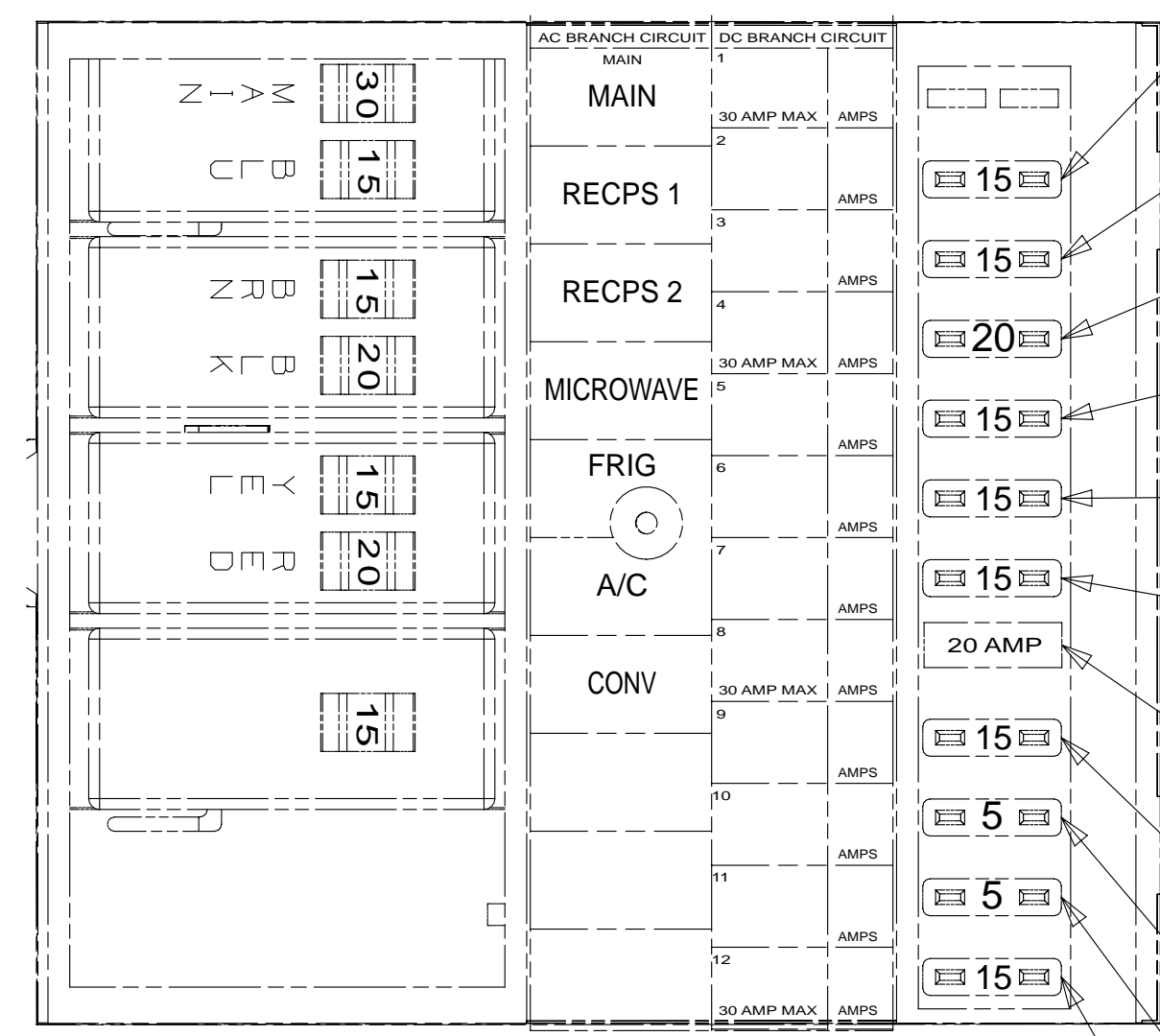
SWITCH-ROCKER  
135740-01-CHT  
SWITCH-BASE  
135741-01-CHT  
SWITCH-BEZEL  
135742-01-CHT  
SCREW  
G11-08-08U (2)

DETAIL DE



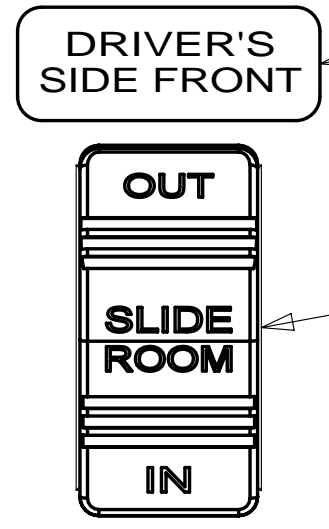
SWITCH-ROCKER  
135740-01-CHT  
SWITCH-BASE  
135741-01-CHT  
SWITCH-BEZEL  
135742-01-CHT  
SCREW  
G11-08-08U (2)

DETAIL DF 45B



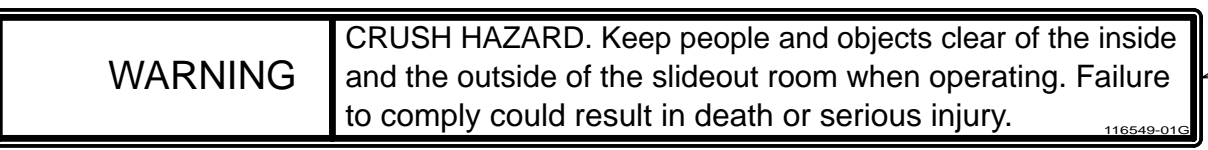
DETAIL DH

- JA 12 YEL (WATER PUMP) (ISOLATED CIRCUIT)
- JB 14 YEL (FURNACE)
- EEC 12 YEL (LOFT BED) 45B
- JC 14 YEL (LAMPS)
- JD 14 YEL (LAMPS)
- JE 14 YEL (MONITOR PANEL AND LAMPS)
- NM 12 YEL (DRAIN PUMP) (ISOLATED CIRCUIT)
- JF 14 YEL (AUDIO/VIDEO)
- ET 16 YEL (REFRIG)
- WB 16 YEL (LP LEAK DETECTOR)
- WC COMPT LAMPS



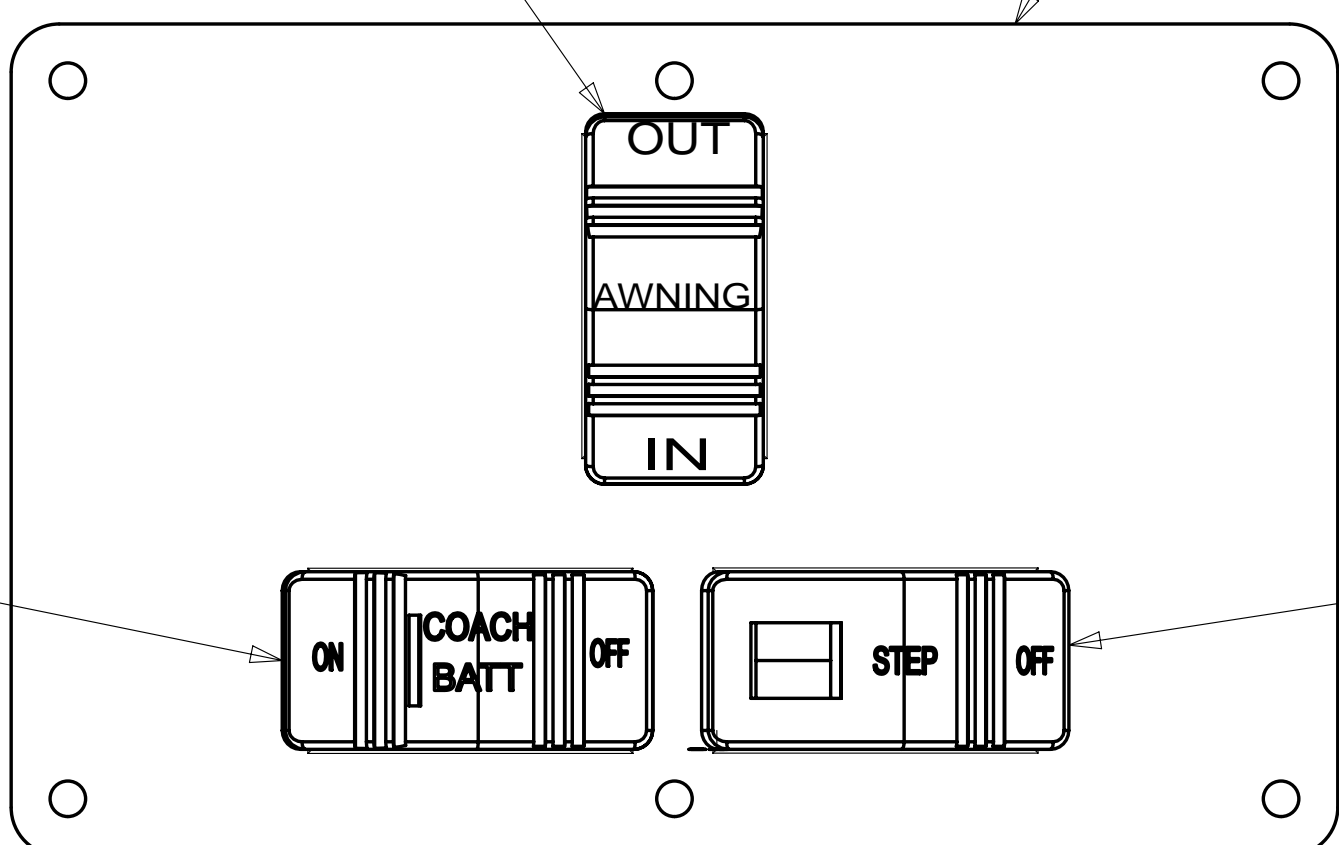
LABEL-SLIDEOUT, DRIVER, FRONT  
163992-01-CHT

SWITCH  
108357-07-000  
ACTUATOR  
108356-24-CHT  
CIRCUITS  
DR,DT,DU



LABEL-WARNING, SLIDEOUT  
116549-01-000

DETAIL DA



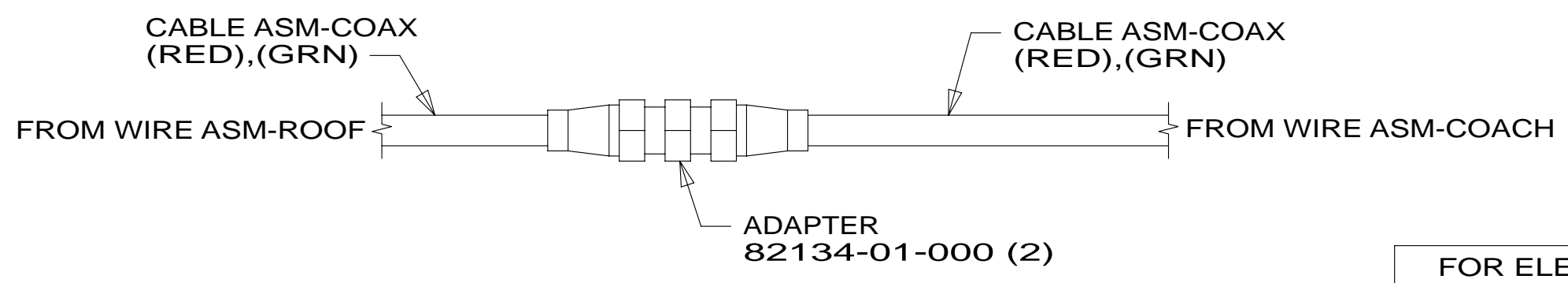
DETAIL DB 1

SWITCH-AWNING  
108357-06-000  
ACTUATOR-SWITCH  
108356-12-CHT  
CIRCUITS  
FFD,FFR,FFE  
FFE,JJR,FFD

PLATE-SWITCH  
158431-10-CHT  
SCREW  
G11-06-10U (6)

SWITCH-COACH BATTERY  
108357-18-000  
ACTUATOR-SWITCH  
108356-19-CHT  
CIRCUITS  
KF,LG,LJ,LH,WC  
WIRE ASM-THERM  
186796-01-000

SWITCH-STEP  
108357-19-000  
CIRCUITS ER,ES



DETAIL DJ

FOR ELECTRICAL TORQUE SPECIFICATIONS SEE DWG NO. 128783-01-000

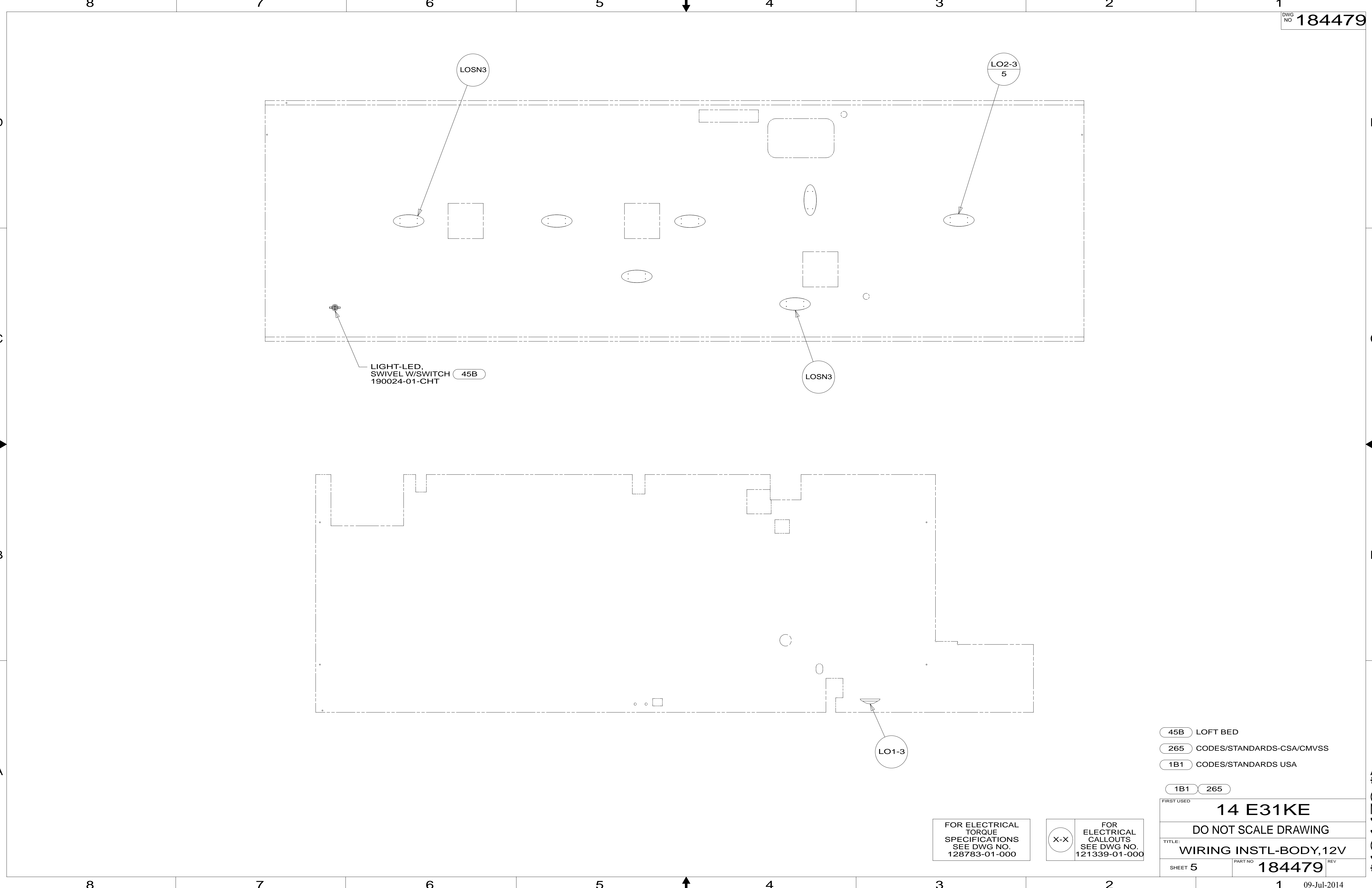
FOR ELECTRICAL CALLOUTS SEE DWG NO. 121339-01-000

- 45B LOFT BED
- 265 CODES/STANDARDS-CSA/CMVSS
- 1B1 CODES/STANDARDS USA

1B1	265
FIRST USED	
<b>14 E31KE</b>	
DO NOT SCALE DRAWING	
TITLE: <b>WIRING INSTL-BODY,12V</b>	
SHEET 4	PART NO <b>184479</b> REV

NOTES:  
1 FOR SWITCH ORIENTATION SEE DETAIL DD.

\* 184479 \* A



LIGHT-LED,  
SWIVEL W/SWITCH  
190024-01-CHT **45B**

- 45B** LOFT BED
- 265** CODES/STANDARDS-CSA/CMVSS
- 1B1** CODES/STANDARDS USA

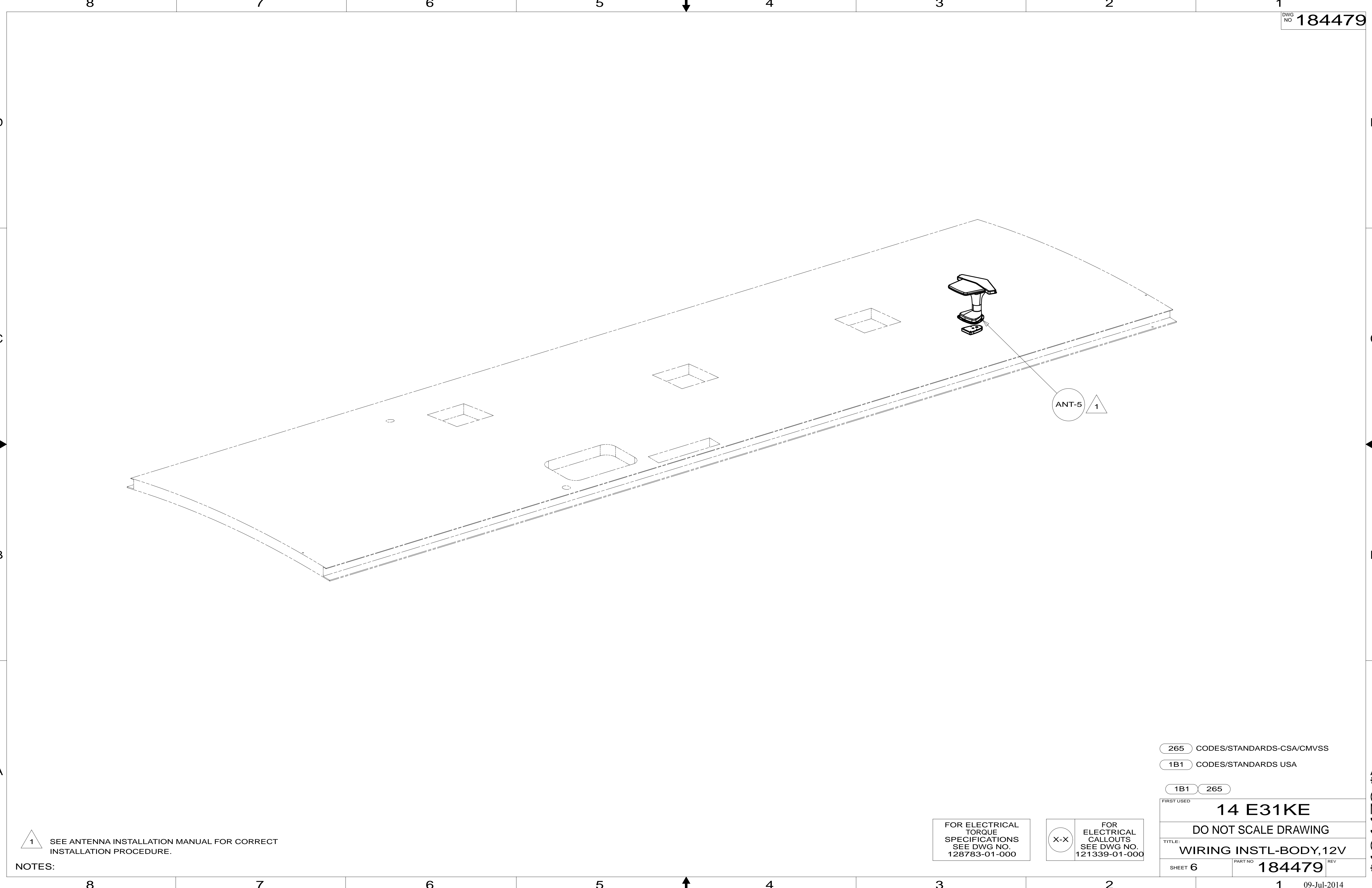
**1B1** **265**

FOR ELECTRICAL  
TORQUE  
SPECIFICATIONS  
SEE DWG NO.  
128783-01-000

**X-X**  
FOR  
ELECTRICAL  
CALLOUTS  
SEE DWG NO.  
121339-01-000

FIRST USED	<b>14 E31KE</b>	
	DO NOT SCALE DRAWING	
TITLE:	<b>WIRING INSTL-BODY, 12V</b>	
SHEET 5	PART NO <b>184479</b>	REV

\*184479 \*A



NOTES:

1 SEE ANTENNA INSTALLATION MANUAL FOR CORRECT INSTALLATION PROCEDURE.

FOR ELECTRICAL TORQUE SPECIFICATIONS SEE DWG NO. 128783-01-000

FOR ELECTRICAL CALLOUTS SEE DWG NO. 121339-01-000

265 CODES/STANDARDS-CSA/CMVSS

1B1 CODES/STANDARDS USA

1B1 265

FIRST USED **14 E31KE**

DO NOT SCALE DRAWING

TITLE: **WIRING INSTL-BODY,12V**

SHEET 6 PART NO **184479** REV



D

D

C

C

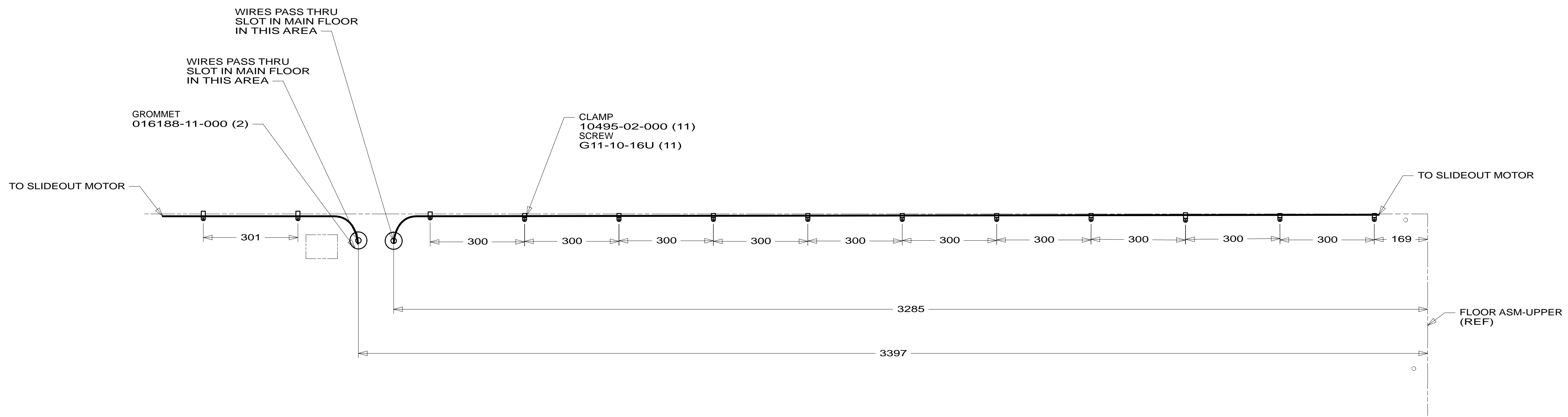
B

B

A

A

\*184479 \*A



VIEW GA

FOR ELECTRICAL  
TORQUE  
SPECIFICATIONS  
SEE DWG NO.  
128783-01-000

FOR  
ELECTRICAL  
CALLOUTS  
SEE DWG NO.  
121339-01-000

265 CODES/STANDARDS-CSA/CMVSS

1B1 CODES/STANDARDS USA

1B1 265

FIRST USED **14 E31KE**

DO NOT SCALE DRAWING

TITLE: **WIRING INSTL-BODY,12V**

SHEET 7 PART NO **184479** REV