



DANGER

Danger of electrical shock, burns or death. Always remove all power sources before attempting any repair, service or diagnostic work. Power can be present from shore power, generator, inverter or battery. All power sources must be disabled and secured before performing any service.

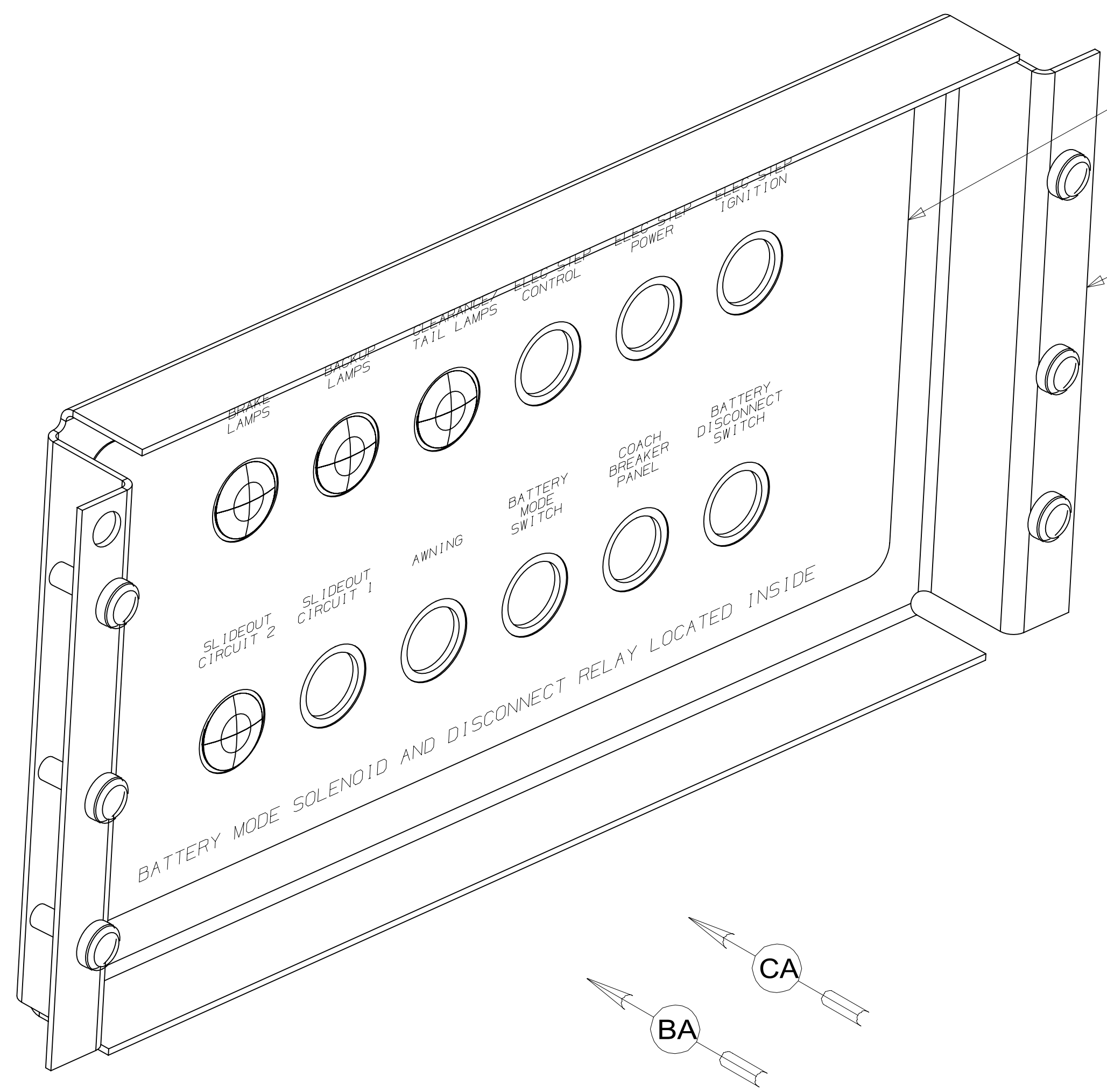
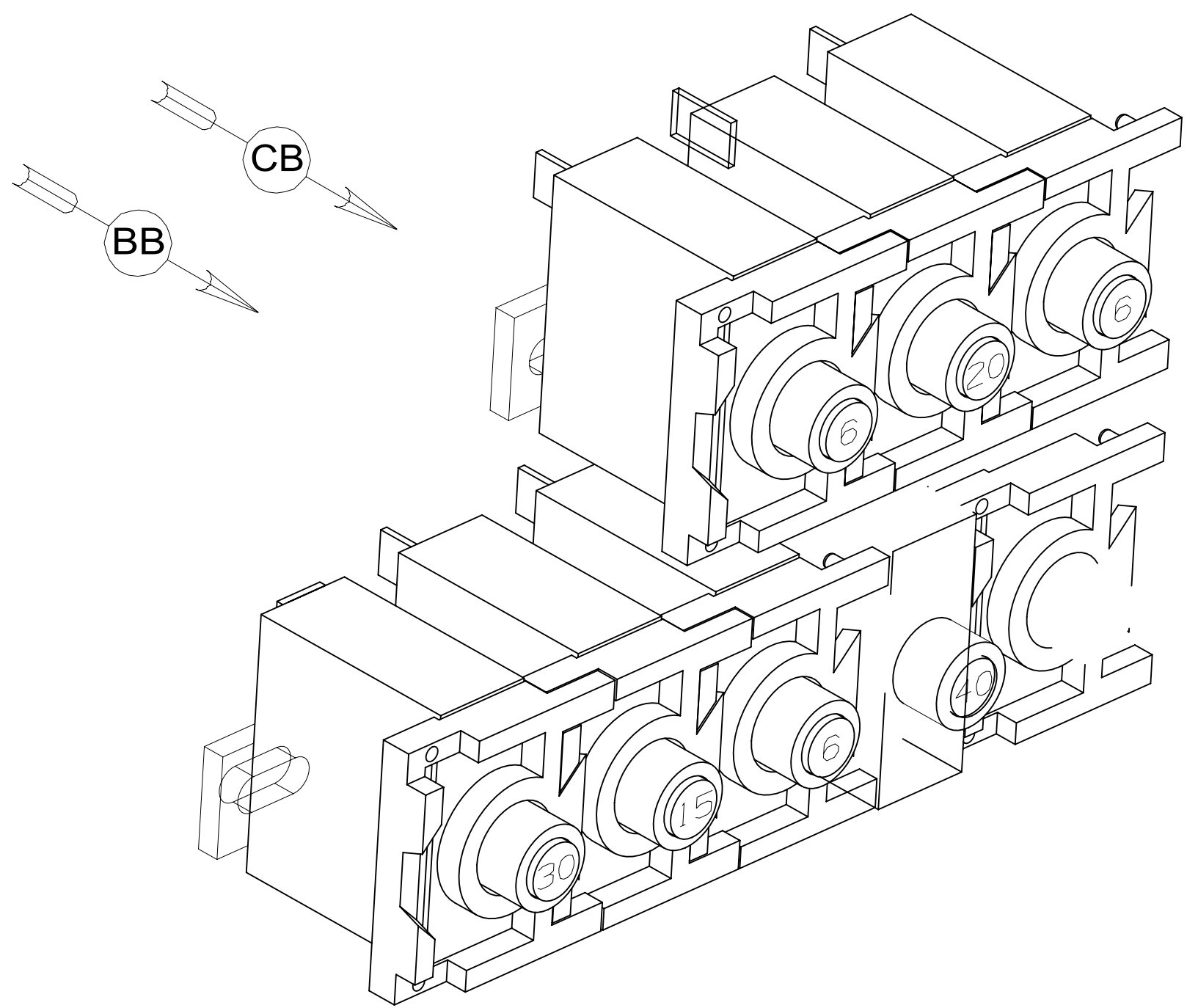


CAUTION

If you lack the skills, tools or equipment to perform diagnostic or repair work leave such work to an authorized Winnebago Industries dealer or other qualified shop.

DRAWING NO.	SHEET	MODEL
183976-01	1,2,4	H25P,H25T
183976-02	1,3,4	H25Q

RELEASE	REV/DATE	DWG NO	183976
REV ZONE	REVISION RECORD	DATE	DTR-ORIG



LABEL
93236-73-000

PLATE-CIRCUIT BREAKERS
161084-01-CHT
SCREW
G39-08-08U (6)

- 265 CODES/STANDARDS-CSA/CMVSS
- 1B1 CODES/STANDARDS USA
- 1B1 265



DTR	ORIG. DATE
CHKR	ALL DIMENSIONS ARE IN MILLIMETERS
P.E.	
M.E.	FIRST USED
DSNR	14 H-SERIES
UNSPECIFIED TOLERANCES ARE:	
WHOLE DIM (X)	: 3
ONE-PLACE (X.X)	: 1.5
TWO-PLACE (X.XX)	: 0.50
ANGLE	: 1°
THIRD ANGLE PROJECTION	

FOR ELECTRICAL
TORQUE
SPECIFICATIONS
SEE DWG NO.
128783-01-000

FOR
ELECTRICAL
CALLOUTS
SEE DWG NO.
121339-01-000

DO NOT SCALE DRAWING REFER TO ES0018 FOR FASTENER TIGHTENING GUIDELINES

TITLE:	CHASSIS ELECTRICAL BOX ASM	
SHEET	1 OF 4	PART NO
		183976
		REV

*183976 *A

CIRCUIT BREAKER-6 AMP
93654-01-000
SCREW
G52-06-05U
SPACER-CIRCUIT BREAKER
141789-01-000

CIRCUIT BREAKER-15 AMP
93654-02-000 (2)
SPACER-CIRCUIT BREAKER
141789-01-000 (2)
SCREW
G52-06-05U (2)
(AWNING)

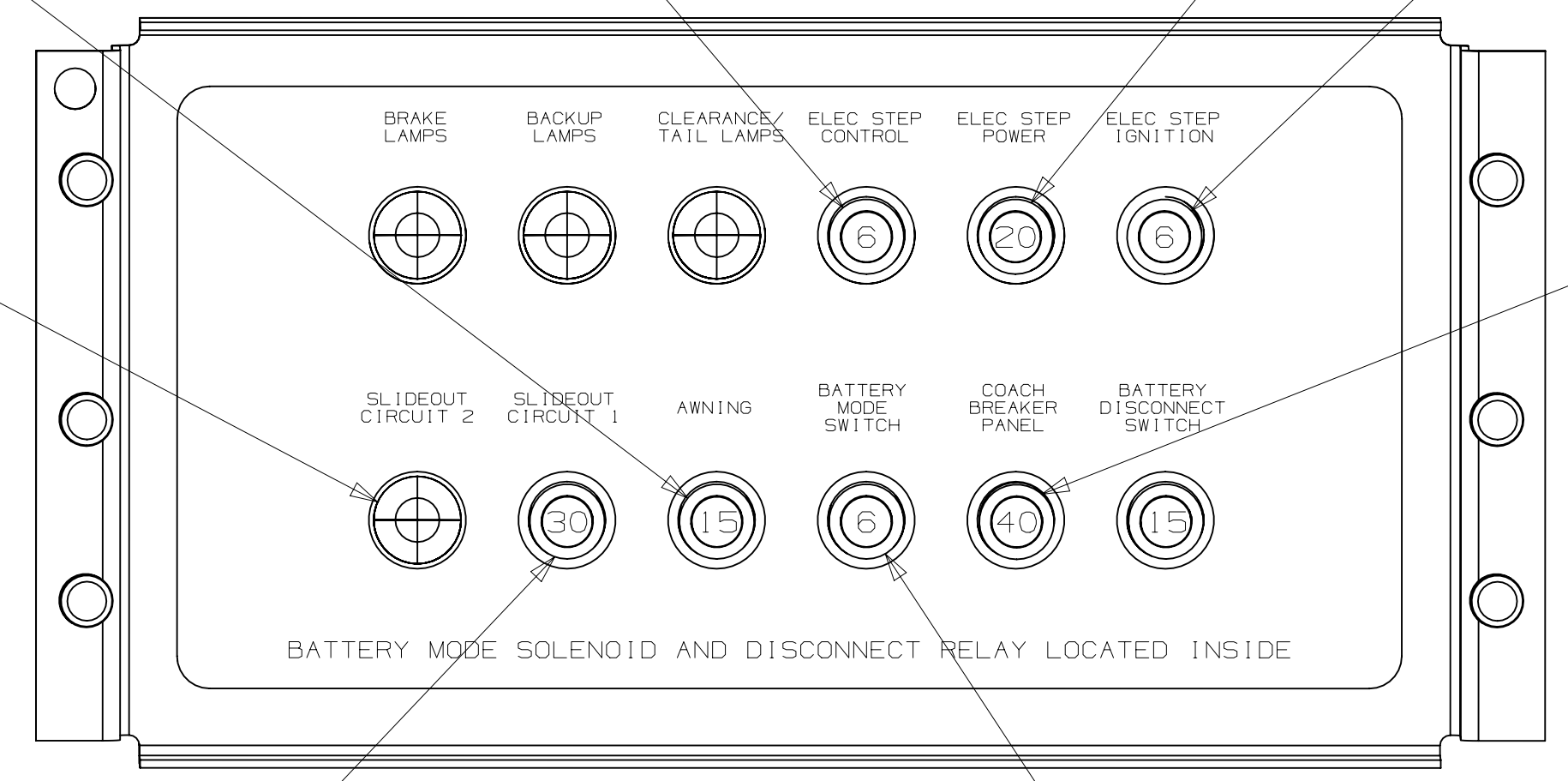
CIRCUIT BREAKER-20 AMP
93654-03-000
SCREW
G52-06-05U
SPACER-CIRCUIT BREAKER
141789-01-000

CIRCUIT BREAKER-6 AMP
93654-01-000
SCREW
G52-06-05U
SPACER-CIRCUIT BREAKER
141789-01-000

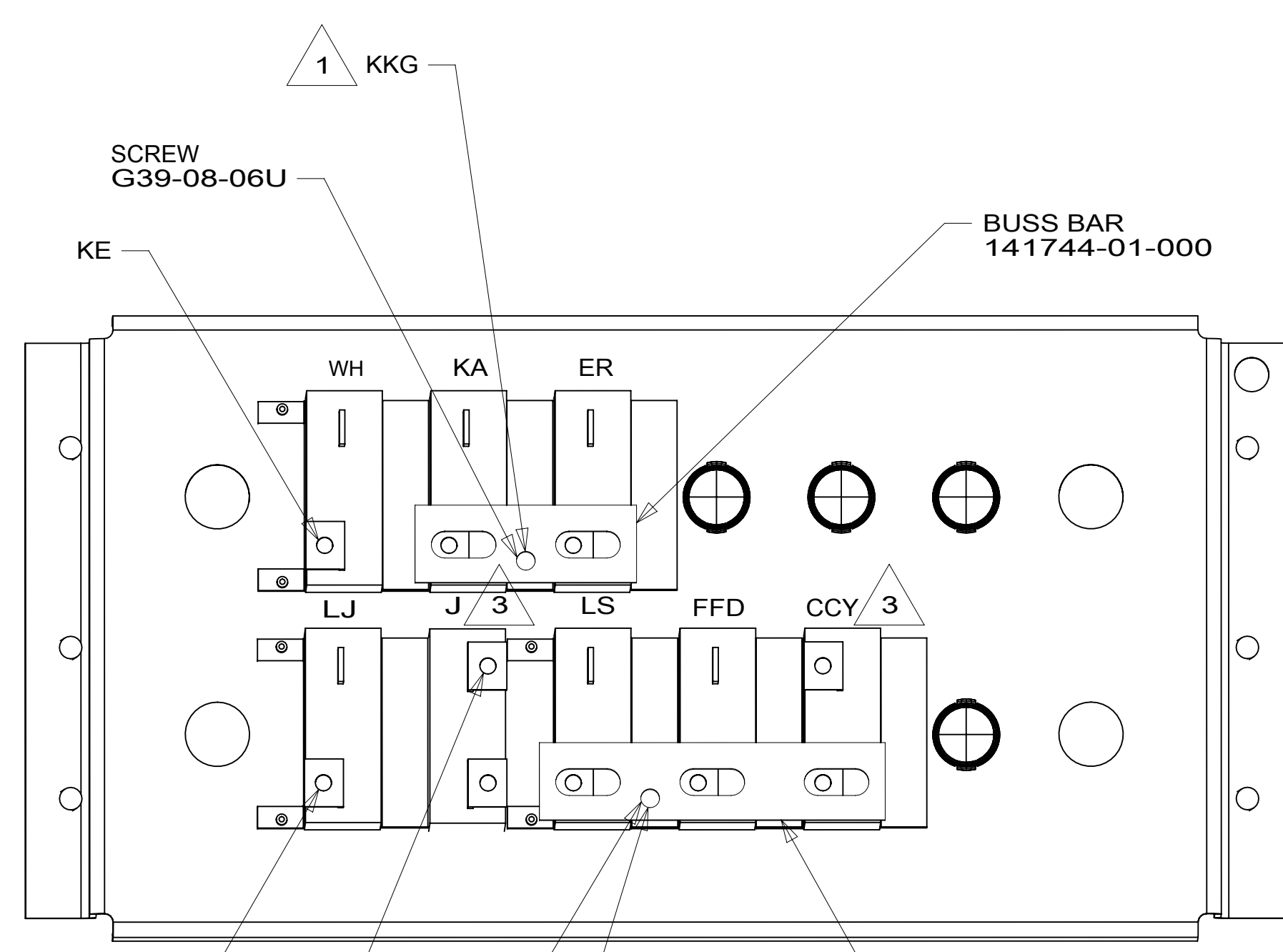
CIRCUIT BREAKER-40 AMP
93655-03-000

CIRCUIT BREAKER-30 AMP
93655-02-000
SCREW
G52-06-04U
G52-06-05U
SPACER-CIRCUIT BREAKER
141789-01-000

CIRCUIT BREAKER-6 AMP
93654-01-000
SCREW
G52-06-05U
SPACER-CIRCUIT BREAKER
141789-01-000



VIEW BA



VIEW BB

- NOTES:
- 4 REPLACE EXISTING SCREW TO PROPERLY ATTACH BREAKER TO BUSS BAR.
 - 3 CIRCUIT IS FROM WIRE ASM-CHASSIS.
 - 2 WIRE IS MARKED WITH YELLOW TAPE.
 - 1 WIRE IS MARKED WITH RED TAPE.

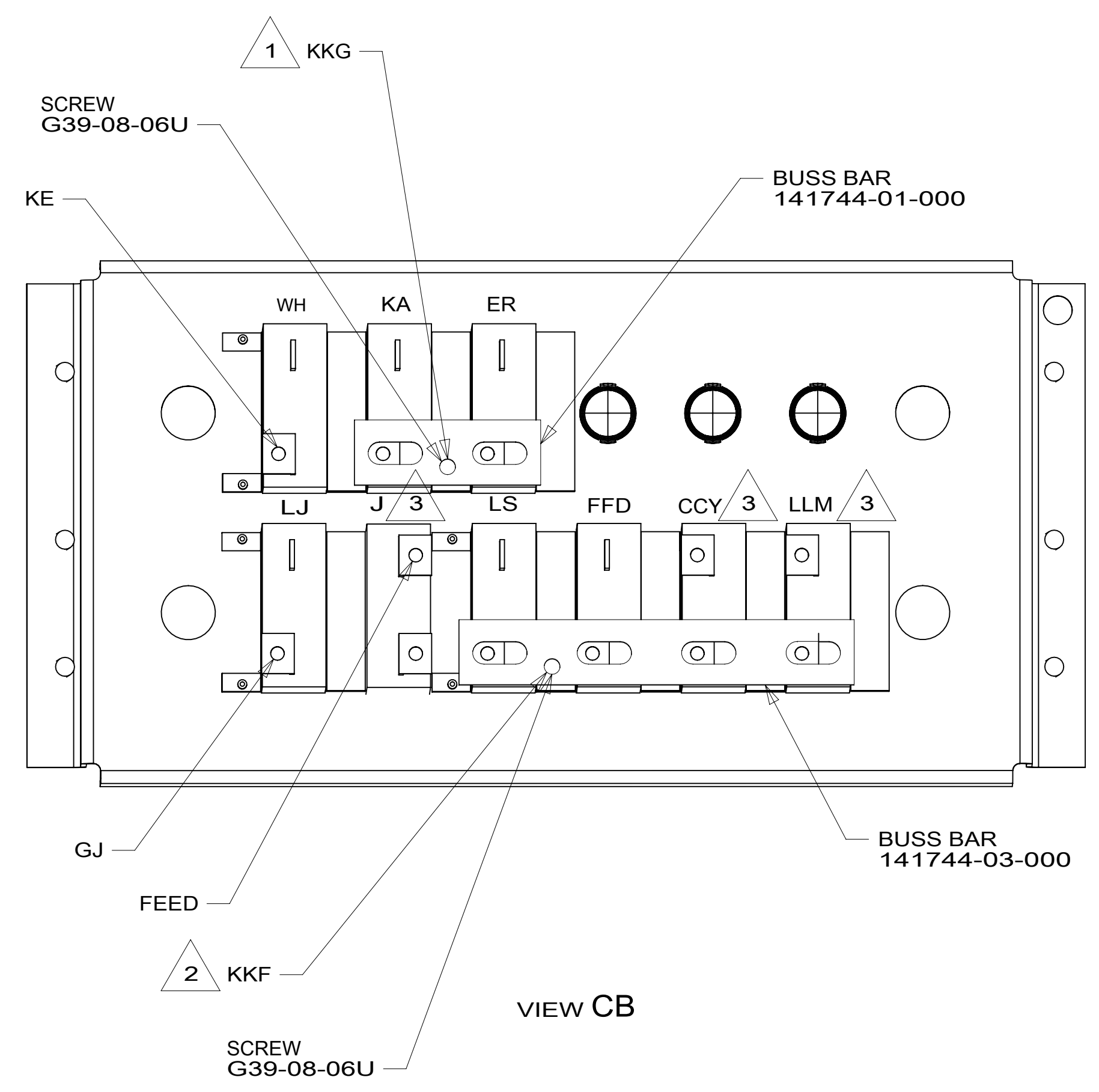
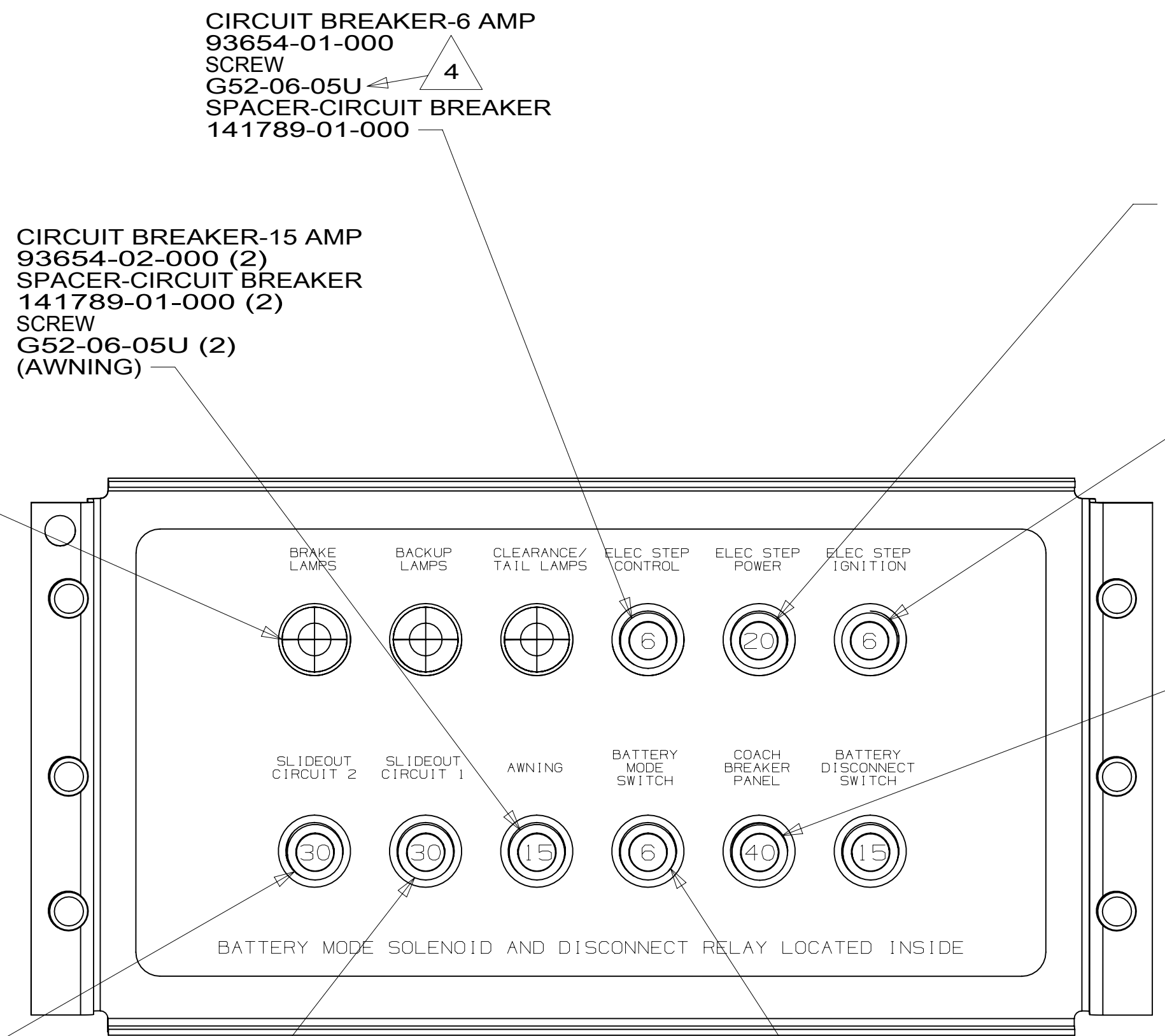
- 1E2 ENTRANCE STEP-ELEC.
- 265 CODES/STANDARDS-CSA/CMVSS
- 1B1 CODES/STANDARDS USA

FIRST USED	
14 H-SERIES	
DO NOT SCALE DRAWING	
TITLE: CHASSIS ELECTRICAL BOX ASM	
SHEET 2	PART NO 183976 REV
1 18-Aug-2015	

FOR ELECTRICAL TORQUE SPECIFICATIONS SEE DWG NO. 128783-01-000

FOR ELECTRICAL CALLOUTS SEE DWG NO. 121339-01-000

183976



- NOTES:
- 4 REPLACE EXISTING SCREW TO PROPERLY ATTACH BREAKER TO BUSS BAR.
 - 3 CIRCUIT IS FROM WIRE ASM-CHASSIS.
 - 2 WIRE IS MARKED WITH YELLOW TAPE.
 - 1 WIRE IS MARKED WITH RED TAPE.

- 1E2 ENTRANCE STEP-ELEC.
- 265 CODES/STANDARDS-CSA/CMVSS
- 1B1 CODES/STANDARDS USA

FIRST USED

14 H-SERIES

DO NOT SCALE DRAWING

TITLE:
CHASSIS ELECTRICAL BOX ASM

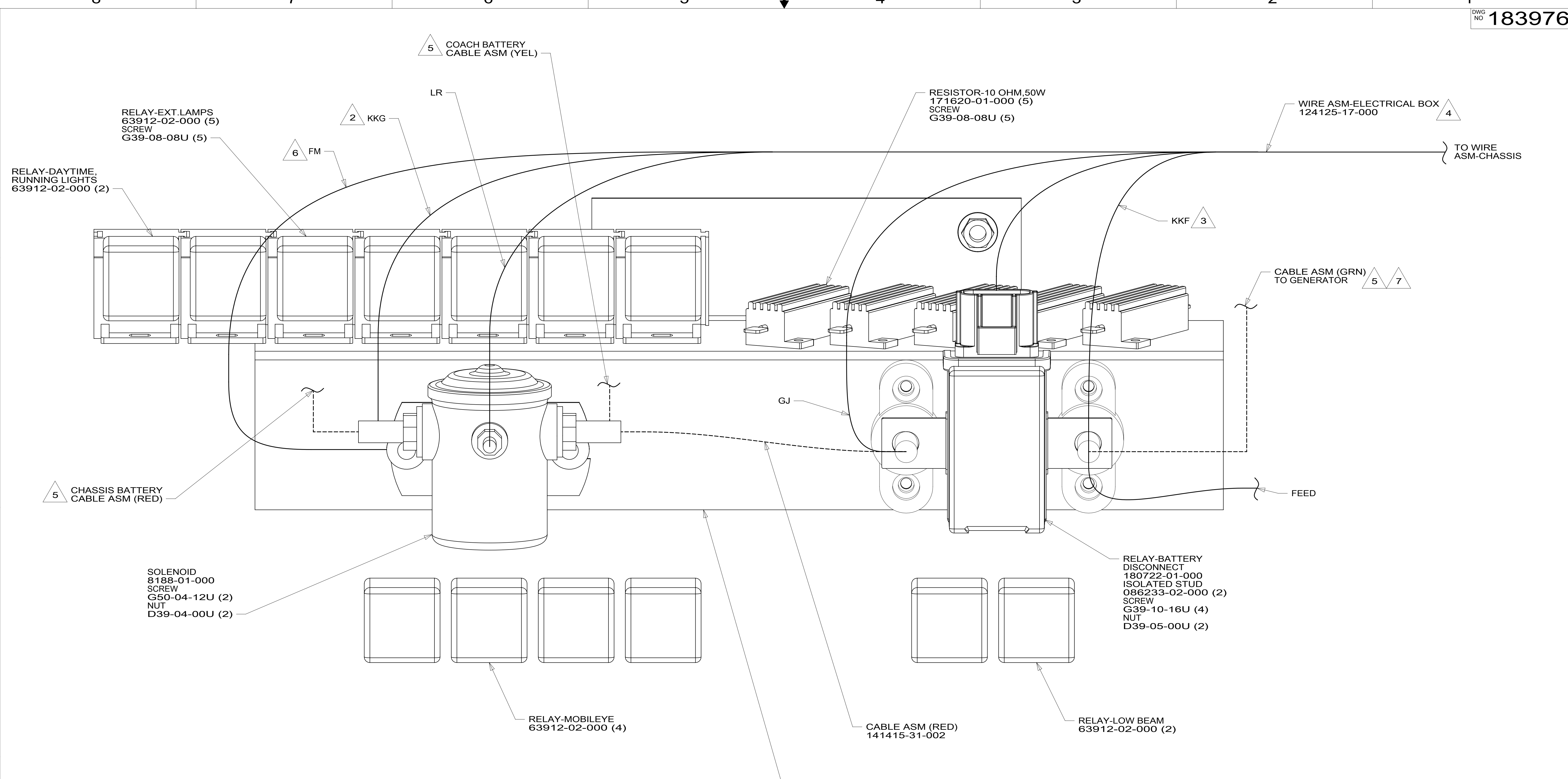
SHEET 3 PART NO **183976** REV

18-Aug-2015

FOR ELECTRICAL TORQUE SPECIFICATIONS SEE DWG NO. 128783-01-000

FOR ELECTRICAL CALLOUTS SEE DWG NO. 121339-01-000

183976



- 7 WITH FEATURE 321 OR 323 NOT CONNECT
CABLE ASM-GENERATOR (GRN) TO SOLENOID.
TAPE END WITH TAPE 8363-01-000 AND LEAVE
CABLE END LOOSE IN ELECTRICAL BOX.
- 6 SECURE WITH SOLENOID MOUNTING SCREW.
- 5 WIRING INSTL-CHASSIS FOR ADDITIONAL INFORMATION.
- 4 TAPE BACK UNUSED WIRES TO HARNESS.
- 3 WIRE IS MARKED WITH YELLOW TAPE.
- 2 WIRE IS MARKED WITH RED TAPE.

1. LEGEND: — WINNEBAGO: - - - - - CABLE: - - - - - CHASSIS SUPPLIED WIRING.

- 323 GENERATOR PREP KIT - DIESEL
- 321 GENERATOR PREP KIT
- 265 CODES/STANDARDS-CSA/CMVSS
- 1B1 CODES/STANDARDS USA

1B1 265

FIRST USED

14 H-SERIES

DO NOT SCALE DRAWING

TITLE: CHASSIS ELECTRICAL BOX ASM

SHEET 4 PART NO 183976 REV

1 18-Aug-2015

FOR ELECTRICAL
TORQUE
SPECIFICATIONS
SEE DWG NO.
128783-01-000

X-X
FOR
ELECTRICAL
CALLOUTS
SEE DWG NO.
121339-01-000

183976