



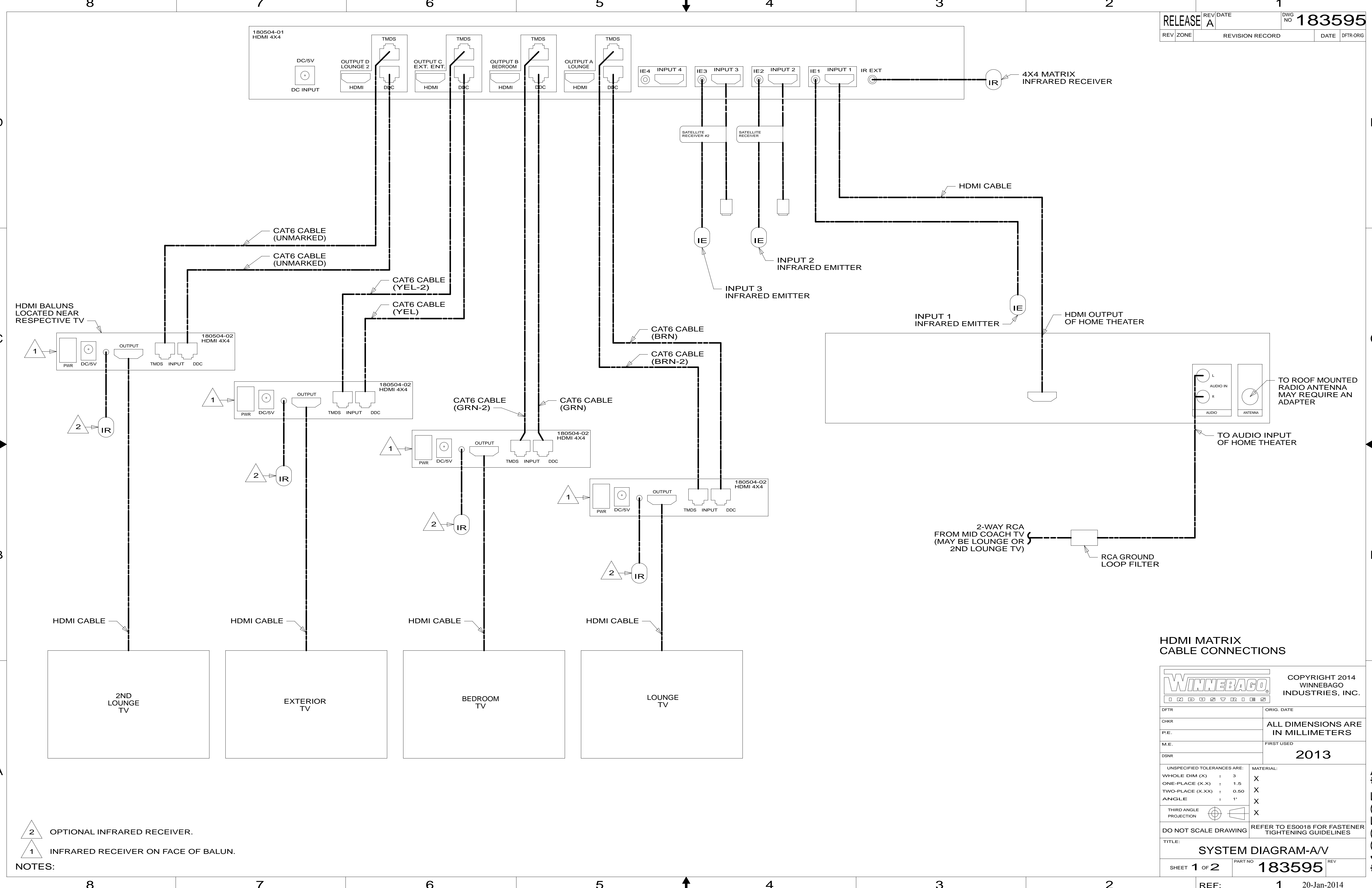
DANGER

Danger of electrical shock, burns or death. Always remove all power sources before attempting any repair, service or diagnostic work. Power can be present from shore power, generator, inverter or battery. All power sources must be disabled and secured before performing any service.



CAUTION

If you lack the skills, tools or equipment to perform diagnostic or repair work leave such work to an authorized Winnebago Industries dealer or other qualified shop.

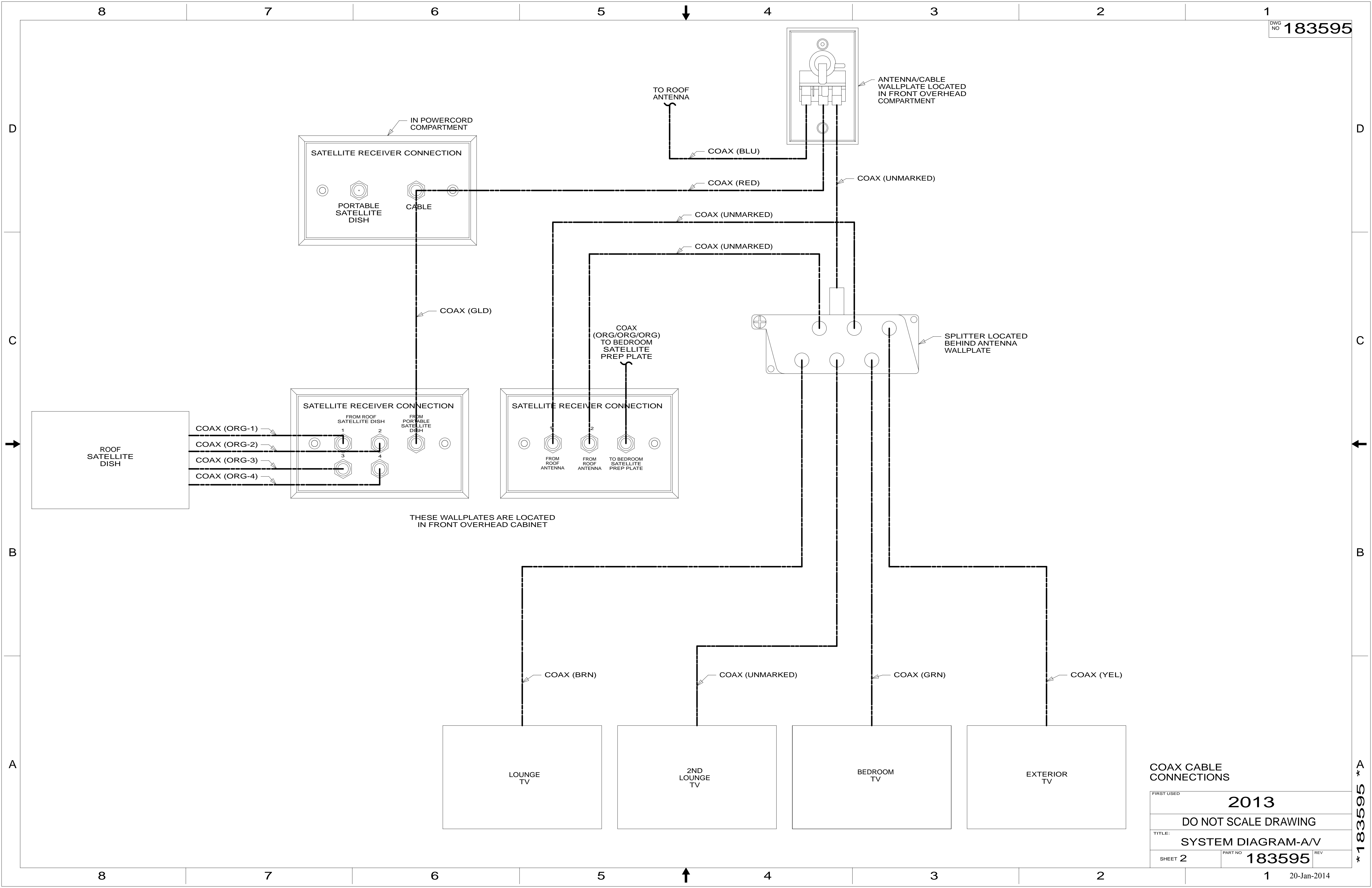


NOTES:
 2 OPTIONAL INFRARED RECEIVER.
 1 INFRARED RECEIVER ON FACE OF BALUN.

HDMI MATRIX CABLE CONNECTIONS

		COPYRIGHT 2014 WINNEBAGO INDUSTRIES, INC.	
DFTR	ORIG. DATE	ALL DIMENSIONS ARE IN MILLIMETERS	
CHKR		FIRST USED	
P.E.		2013	
M.E.			
DSNR			
UNSPECIFIED TOLERANCES ARE:		MATERIAL:	
WHOLE DIM (X)	: 3	X	
ONE-PLACE (X.X)	: 1.5	X	
TWO-PLACE (X.XX)	: 0.50	X	
ANGLE	: 1'	X	
THIRD ANGLE PROJECTION		X	
DO NOT SCALE DRAWING		REFER TO ES0018 FOR FASTENER TIGHTENING GUIDELINES	
TITLE: SYSTEM DIAGRAM-A/V			
SHEET 1 OF 2	PART NO 183595	REV	
REF:	1	20-Jan-2014	

* 183595 * A



COAX CABLE CONNECTIONS

FIRST USED	2013	
DO NOT SCALE DRAWING		
TITLE:	SYSTEM DIAGRAM-A/V	
SHEET 2	PART NO 183595	REV

* 183595 * A