



**DANGER**

**Danger of electrical shock, burns or death.** Always remove all power sources before attempting any repair, service or diagnostic work. Power can be present from shore power, generator, inverter or battery. All power sources must be disabled and secured before performing any service.

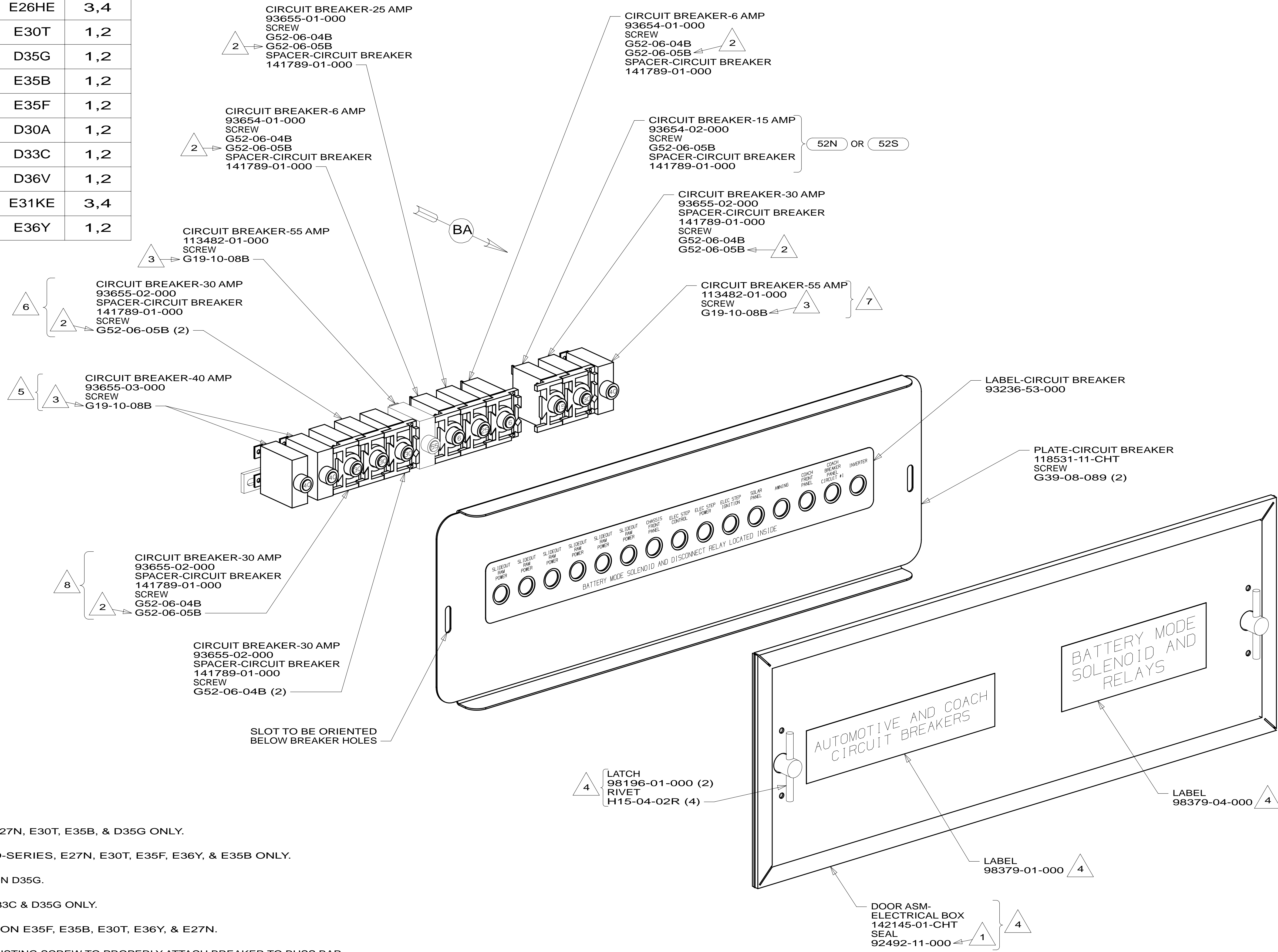


**CAUTION**

If you lack the skills, tools or equipment to perform diagnostic or repair work leave such work to an authorized Winnebago Industries dealer or other qualified shop.

| DRAWING NO. | MODEL | SHEET |
|-------------|-------|-------|
| 183488-01   | E27N  | 1,2   |
| 183488-02   | E26HE | 3,4   |
| 183488-03   | E30T  | 1,2   |
| 183488-04   | D35G  | 1,2   |
| 183488-05   | E35B  | 1,2   |
| 183488-06   | E35F  | 1,2   |
| 183488-07   | D30A  | 1,2   |
| 183488-08   | D33C  | 1,2   |
| 183488-09   | D36V  | 1,2   |
| 183488-10   | E31KE | 3,4   |
| 183488-11   | E36Y  | 1,2   |

|          |                 |        |          |
|----------|-----------------|--------|----------|
| RELEASE  | REV/DATE        | DWG NO | 183488   |
| REV ZONE | REVISION RECORD | DATE   | DTR-ORIG |



- 52S AWNING - 2ND PATIO, ELECTRIC
- 52N AWNING - PATIO, ELECTRIC
- 265 CODES/STANDARDS-CSA/CMVSS
- 1B1 CODES/STANDARDS USA

- 1B1 265

**WINNEBAGO** COPYRIGHT 2014 WINNEBAGO INDUSTRIES, INC.

|                             |  |
|-----------------------------|--|
| DTR                         | ORIG. DATE   |
| CHKR                        | ALL DIMENSIONS ARE IN MILLIMETERS                  |
| P.E.                        |  |
| M.E.                        | FIRST USED   |
| DSNR                        | 14 D&E-SER   |
| UNSPECIFIED TOLERANCES ARE: |  |
| WHOLE DIM (X)               | : 3  |
| ONE-PLACE (X.X)             | : 1.5  |
| TWO-PLACE (X.XX)            | : 0.50   |
| ANGLE                       | : 1°   |
| THIRD ANGLE PROJECTION      |  |
| DO NOT SCALE DRAWING        | REFER TO ES0018 FOR FASTENER TIGHTENING GUIDELINES |

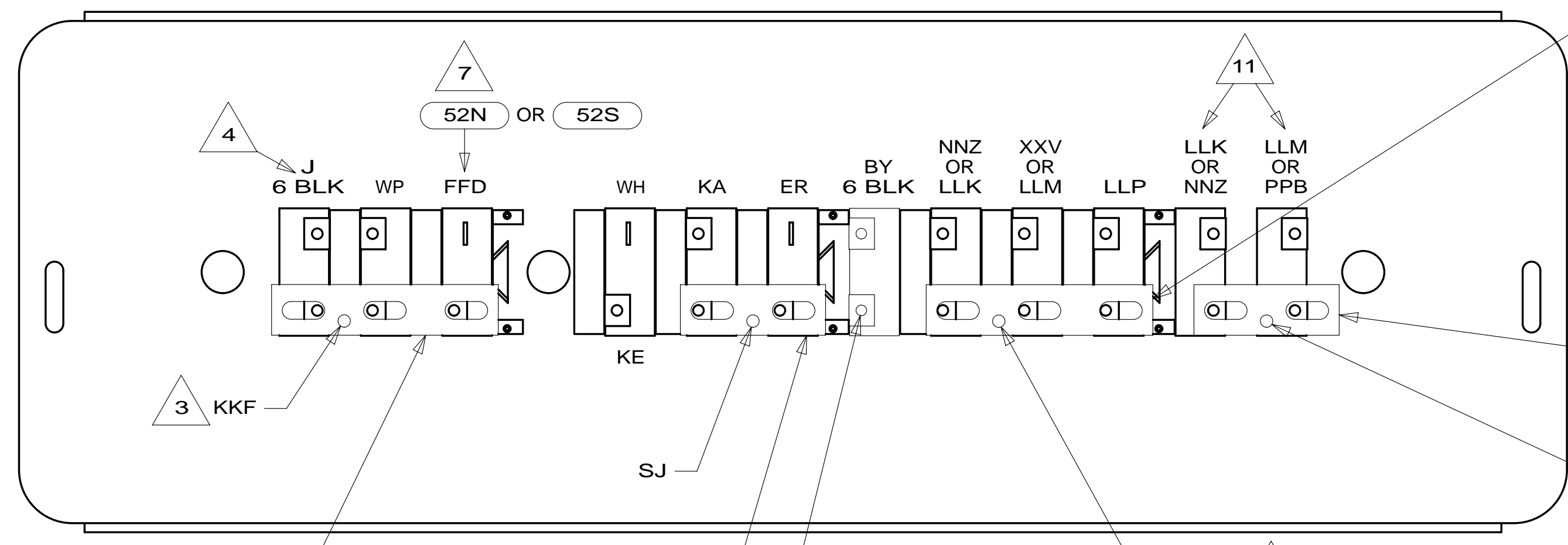
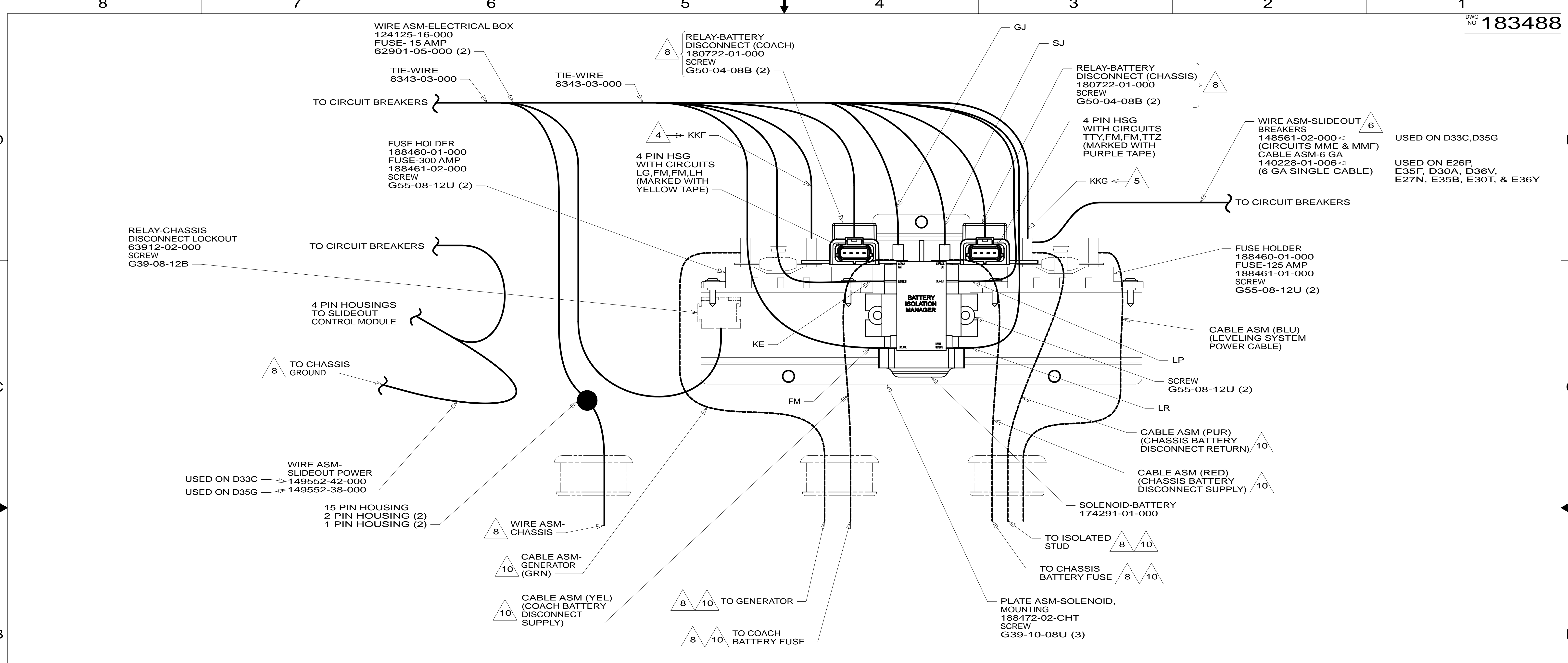
|                                   |                |
|-----------------------------------|----------------|
| TITLE: CHASSIS ELECTRICAL BOX ASM |                |
| SHEET 1 OF 4                      | PART NO 183488 |

- NOTES:
- 8 USED ON E27N, E30T, E35B, & D35G ONLY.
  - 7 USED ON D-SERIES, E27N, E30T, E35F, E36Y, & E35B ONLY.
  - 6 NOT USED ON D35G.
  - 5 USED ON D33C & D35G ONLY.
  - 4 NOT USED ON E35F, E35B, E30T, E36Y, & E27N.
  - 3 REPLACE EXISTING SCREW TO PROPERLY ATTACH BREAKER TO BUSS BAR.
  - 2 USE THE LONGER SCREW TO PROPERLY ATTACH BREAKER TO BUSS BAR.
  - 1 PLACE AROUND ENTIRE PERIMETER OF DOOR WITH SEAM AT BOTTOM.

FOR ELECTRICAL TORQUE SPECIFICATIONS SEE DWG NO. 128783-01-000

X-X FOR ELECTRICAL CALLOUTS SEE DWG NO. 121339-01-000

\* 183488 \*



- 11 FROM WIRE ASM-SLIDEOUT POWER ON D33C & D35G ONLY.
- 10 SEE BATTERY INSTL FOR ADDITIONAL INFORMATION.
- 9 WITHOUT 52N OR 52S
- 8 SEE WIRING INSTL-CHASSIS FOR ADDITIONAL INFORMATION.
- 7 IF CIRCUIT NOT USED, TAPE BACK TO HARNESS.
- 6 WIRE MARKED WITH RED TAPE.
- 5 WIRE MARKED WITH PURPLE TAPE.
- 4 WIRE MARKED WITH YELLOW TAPE.
- 3 WIRE MARKED WITH 2 WRAPS OF YELLOW TAPE.

2. SECURE CONDUIT 41953, TAB AS REQUIRED, OVER ALL WIRES IN CONTACT WITH SHARP EDGES.

1. LEGEND: — WINNEBAGO; - - - - - CABLE; - - - - - CHASSIS SUPPLIED WIRING.

NOTES:

BUSS BAR 141744-01-000 USED ON E35F, D30A, D33C, & D36V  
 141744-02-000 USED ON E35B, E27N, D35G, E30T, & E36Y

BUSS BAR 141744-01-000 USED ON D33C

MMF 6 USED ON D33C, D35G

MME OR 6 GA SINGLE CABLE USED ON D30A, D36V, D35G, E27N, E30T, E35F, E35B, & E36Y

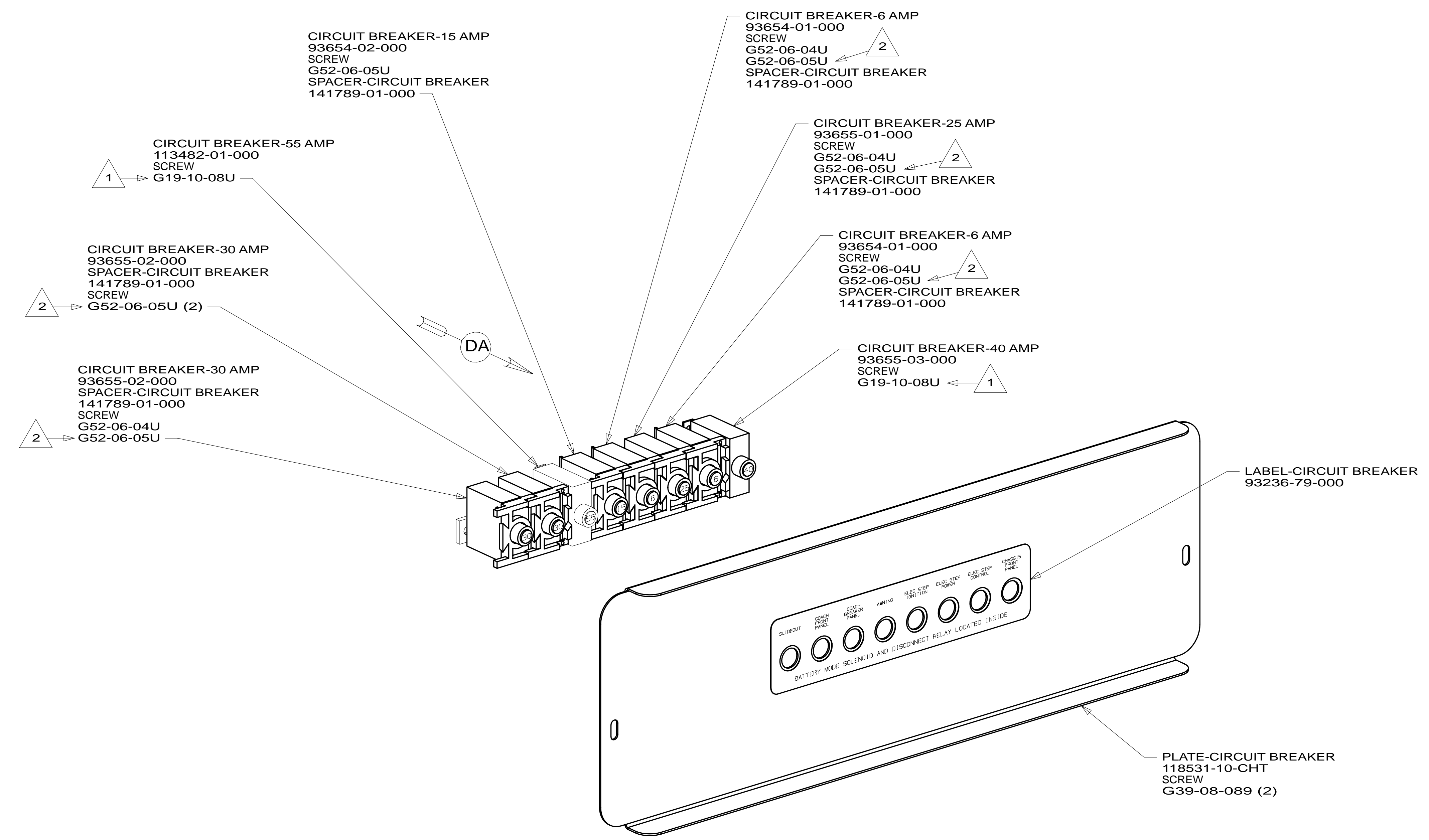
FOR ELECTRICAL TORQUE SPECIFICATIONS SEE DWG NO. 128783-01-000

FOR ELECTRICAL CALLOUTS SEE DWG NO. 121339-01-000

- 52S AWNING - 2ND PATIO, ELECTRIC
- 52N AWNING - PATIO, ELECTRIC
- 265 CODES/STANDARDS - CSA/CMVSS
- 1B1 CODES/STANDARDS - USA

|   |                           |
|---|---------------------------|
| FIRST USED                                  |                           |
| <b>14 D&amp;E-SER</b>                       |                           |
| <b>DO NOT SCALE DRAWING</b>                 |                           |
| TITLE:<br><b>CHASSIS ELECTRICAL BOX ASM</b> |                           |
| SHEET 2                                     | PART NO <b>183488</b> REV |

\* 183488 \*



- 2 USE THE LONGER SCREW TO PROPERLY ATTACH BREAKER TO BUSS BAR.
- 1 REPLACE EXISTING SCREW TO PROPERLY ATTACH BREAKER TO BUSS BAR.

NOTES:

FOR ELECTRICAL TORQUE SPECIFICATIONS SEE DWG NO. 128783-01-000

FOR ELECTRICAL CALLOUTS SEE DWG NO. 121339-01-000

265 CODES/STANDARDS - CSA/CMVSS

1B1 CODES/STANDARDS - USA

1B1 265

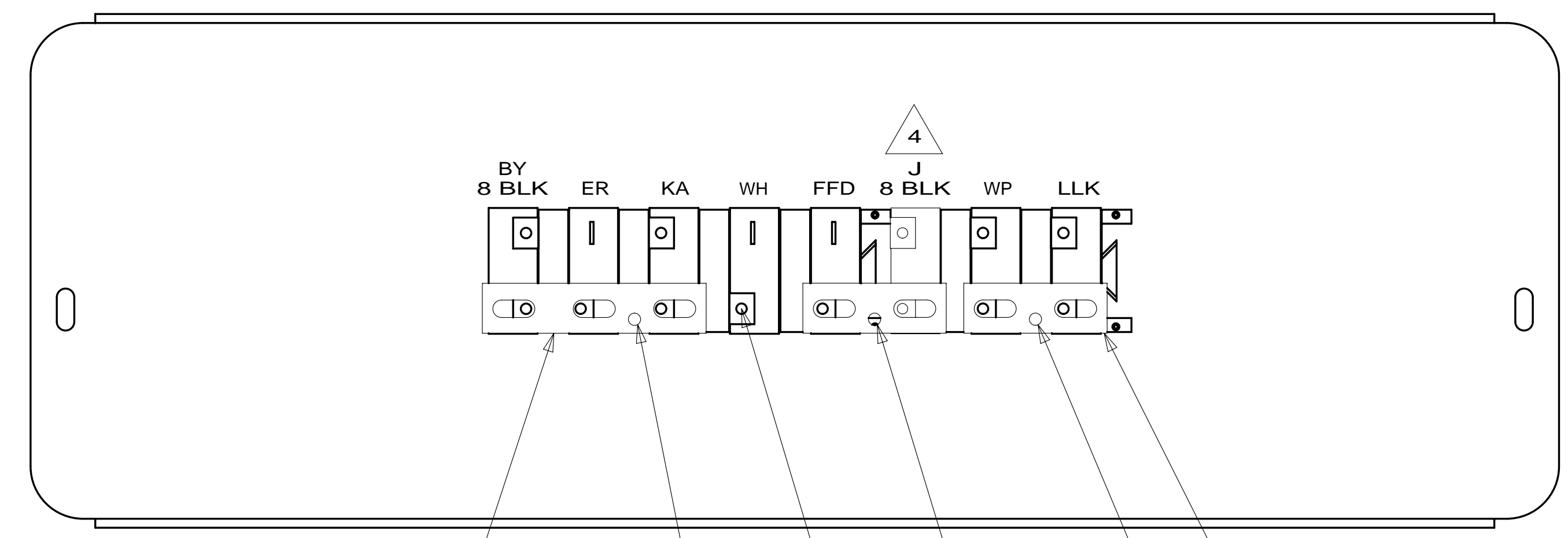
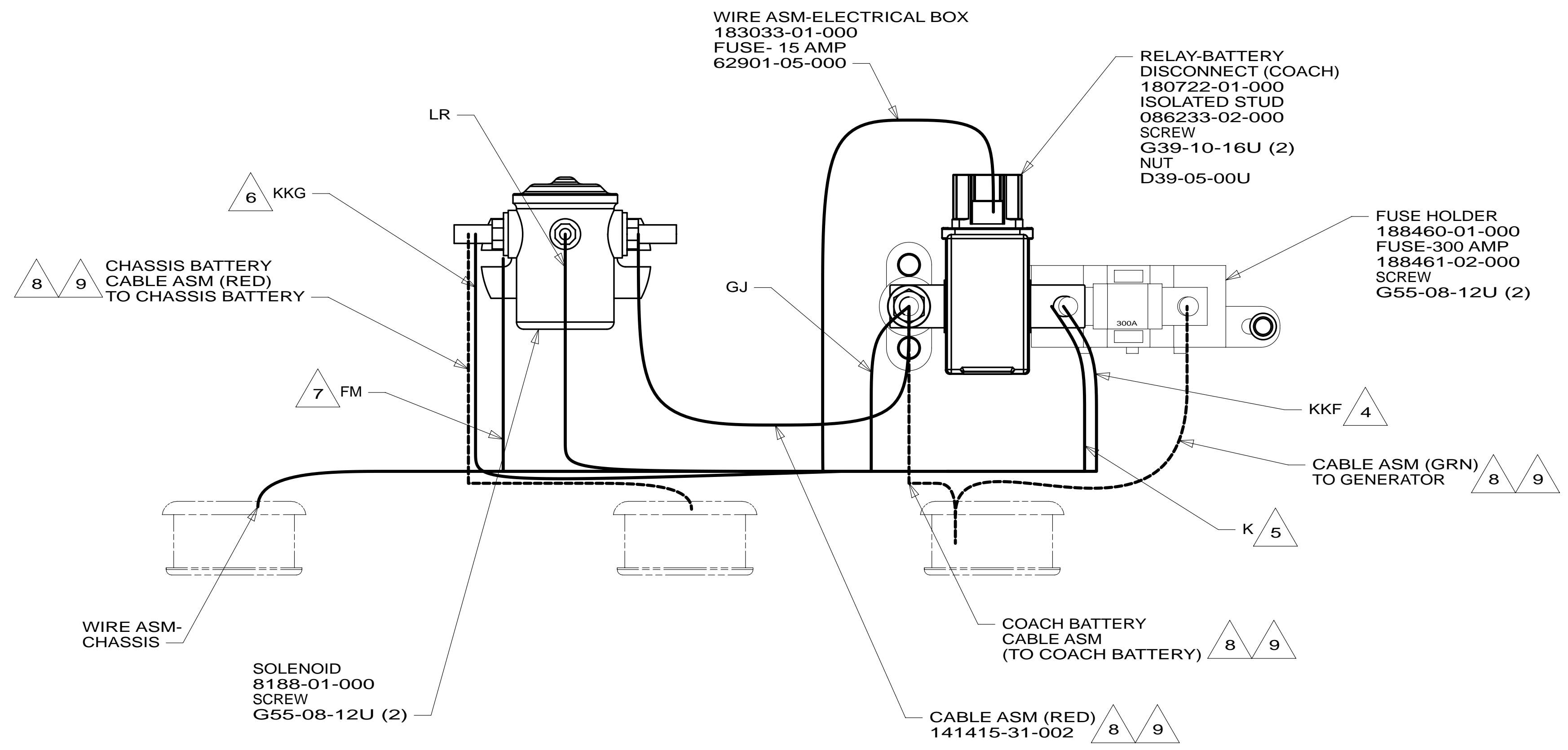
FIRST USED **14 D&E-SER**

**DO NOT SCALE DRAWING**

TITLE: **CHASSIS ELECTRICAL BOX ASM**

SHEET 3 PART NO **183488** REV

\* 183488 \* A



- 9 SEE BATTERY INSTL FOR ADDITIONAL INFORMATION.
- 8 SEE WIRING INSTL-CHASSIS FOR ADDITIONAL INFORMATION.
- 7 SECURE WITH SOLENOID MOUNTING SCREW.
- 6 WIRE MARKED WITH RED TAPE.
- 5 WIRE MARKED WITH PURPLE TAPE.
- 4 WIRE MARKED WITH YELLOW TAPE.
- 3 WIRE MARKED WITH 2 WRAPS OF YELLOW TAPE.

2. SECURE CONDUIT 41953, TAB AS REQUIRED, OVER ALL WIRES IN CONTACT WITH SHARP EDGES.

1. LEGEND: — WINNEBAGO; - - - - - GABLE; - - - - - CHASSIS SUPPLIED WIRING.

NOTES:

DETAIL DA

FOR ELECTRICAL TORQUE SPECIFICATIONS SEE DWG NO. 128783-01-000

FOR ELECTRICAL CALLOUTS SEE DWG NO. 121339-01-000

265 CODES/STANDARDS - CSA/CMVSS  
 1B1 CODES/STANDARDS - USA

1B1 265

|   |                           |
|---|---------------------------|
| FIRST USED                                  |                           |
| <b>14 D&amp;E-SER</b>                       |                           |
| <b>DO NOT SCALE DRAWING</b>                 |                           |
| TITLE:<br><b>CHASSIS ELECTRICAL BOX ASM</b> |                           |
| SHEET 4                                     | PART NO <b>183488</b> REV |

\* 183488 \* \* A