



**DANGER**

**Danger of electrical shock, burns or death.** Always remove all power sources before attempting any repair, service or diagnostic work. Power can be present from shore power, generator, inverter or battery. All power sources must be disabled and secured before performing any service.



**CAUTION**

If you lack the skills, tools or equipment to perform diagnostic or repair work leave such work to an authorized Winnebago Industries dealer or other qualified shop.


DRAWING NO.	MODEL	SHEET
183487-01	E27N	1,2,3,6
183487-02	E26HE	1,2,3,7
183487-03	E30T	1,2,3,6
183487-04	D35G	1,2,3,6
183487-05	E35B	1,2,3,6
183487-06	E35F	1,2,3,6
183487-07	D30A	1,2,3,6
183487-08	D33C	1,2,3,6
183487-09	D36V	1,2,3,6
183487-10	E31KE	1,2,3,7
183487-11	E36Y	1,4,5,6

D-SERIES		D30A	D33C	D35G	D36V
CABLE ASM-CHASSIS GND EXT (BLK)		133566-12-011	133566-12-042	133566-12-041	133566-12-011
CABLE ASM-CHASSIS BATTERY DISCONNECT SUPPLY (RED)		141415-32-019	141415-32-055	141415-32-037	141415-32-019
CABLE ASM-COACH BATTERY DISCONNECT SUPPLY (YEL)		141416-52-014	141416-52-050	141416-52-043	141416-52-014
CABLE ASM-COACH BATTERY GND (BLK)		133567-12-008	133567-12-008	133567-12-008	133567-12-008
CABLE ASM-CHASSIS BATTERY DISCONNECT RETURN (PUR)		141415-12-023	141415-12-026	141415-12-015	141415-12-025
CABLE ASM-GENERATOR (GRN)		141415-42-068	141415-42-085	141415-42-094	141415-42-093
LEVELING SYSTEM POWER CABLE (BLU)	60M	141415-22-048	141415-22-012	141415-22-038	141415-22-050
LEVELING SYSTEM GND CABLE (BLK)	60M	133566-12-008	133566-12-008	133566-12-008	133566-12-008
WIRE ASM-INVERTER	401	154845-02-053	154845-02-017	154845-02-005	154845-02-029
CABLE ASM-STARTER (RED)		141416-32-010	141416-32-041	141416-32-043	141416-32-010
CABLE ASM-COACH BATTERY FUSE		141416-52-003	141416-52-003	141416-52-003	141416-52-003
CABLE ASM-CHASSIS BATTERY FUSE		141415-32-003	141415-32-003	141415-32-003	141415-32-003

E-SERIES		E26HE	E27N	E30T	E31KE	E35B	E35F	E36Y
CABLE ASM-CHASSIS GND EXT (BLK)		133566-12-018	133566-12-011	133566-12-032	133566-12-011	133566-12-011	133566-12-010	133566-12-034
CABLE ASM-CHASSIS BATTERY DISCONNECT SUPPLY (RED)		141415-32-010	141415-32-029	141415-32-034	141415-32-023	141415-32-024	141415-32-026	141415-32-042
CABLE ASM-COACH BATTERY DISCONNECT SUPPLY (YEL)		141416-52-014	141416-52-024	141416-52-034	141416-52-020	141416-52-024	141416-52-023	141416-52-038
CABLE ASM-COACH BATTERY GND (BLK)		133567-12-008	133567-12-008	133567-12-008	133567-12-008	133567-12-008	133567-12-008	133567-12-008
CABLE ASM-CHASSIS BATTERY DISCONNECT RETURN (PUR)		-----	141415-12-028	141415-12-027		141415-12-028	141415-12-030	141415-12-032
CABLE ASM-GENERATOR (GRN)		141415-42-071	141415-42-067	141415-42-074	141415-42-080	141415-42-106	141415-42-104	141415-42-118
CABLE ASM-GENERATOR GND (BLK)		133566-12-008	133566-12-008	133566-12-008	133566-12-008			
LEVELING SYSTEM POWER CABLE (BLU)	60M	141415-29-023	141415-29-015	141415-29-010	141415-29-023	141415-29-011	141415-29-011	141415-29-011
LEVELING SYSTEM GND CABLE (BLK)	60M	133566-12-008	133566-12-008	133566-12-008	133566-12-008	133566-12-008	133566-12-008	133566-12-008
WIRE ASM-INVERTER	401		154845-02-025	154845-02-035		154845-02-031	154845-02-026	
CABLE ASM-STARTER (RED)		141416-32-016	141416-32-010	141416-32-032	141416-32-010	141416-32-010	141416-32-010	141416-32-035
CABLE ASM (ORG) FROM COACH BATTERY TO INVERTER FUSE								175207-62-005
CABLE ASM (ORG) FROM INVERTER FUSE TO INVERTER BATT DISCONNECT								175207-62-020
CABLE ASM (ORG) FROM BATTERY DISCONNECT TO POSITIVE POST ON INVERTER								175207-62-006
CABLE ASM (BLK) FROM COACH BATTERY TO INVERTER NEGATIVE TERMINAL								175211-01-012
CABLE ASM-TEMPERATURE								175385-03-000
CABLE ASM (YEL) JUMPER BETWEEN POSITIVE POSTS ON COACH BATTERY								141417-52-004 141417-51-002 (2) ← 15L
CABLE ASM (BLK) JUMPER BETWEEN NEGATIVE POSTS ON COACH BATTERY								133568-12-004 133568-11-002 (2) ← 15L
CABLE ASM-INVERTER GROUND (GRN)								136145-01-013
CABLE ASM-COACH BATTERY FUSE		141416-52-003	141416-52-003	141416-52-003	141416-52-003	141416-52-003	141416-52-003	141416-52-003
CABLE ASM-CHASSIS BATTERY FUSE		141415-32-003	141415-32-003	141415-32-003	141415-32-003	141415-32-003	141415-32-003	141415-32-003

RELEASE	REV/DATE	DWG NO	183487
REV ZONE	A	REVISION RECORD	DATE DFT-ORIG

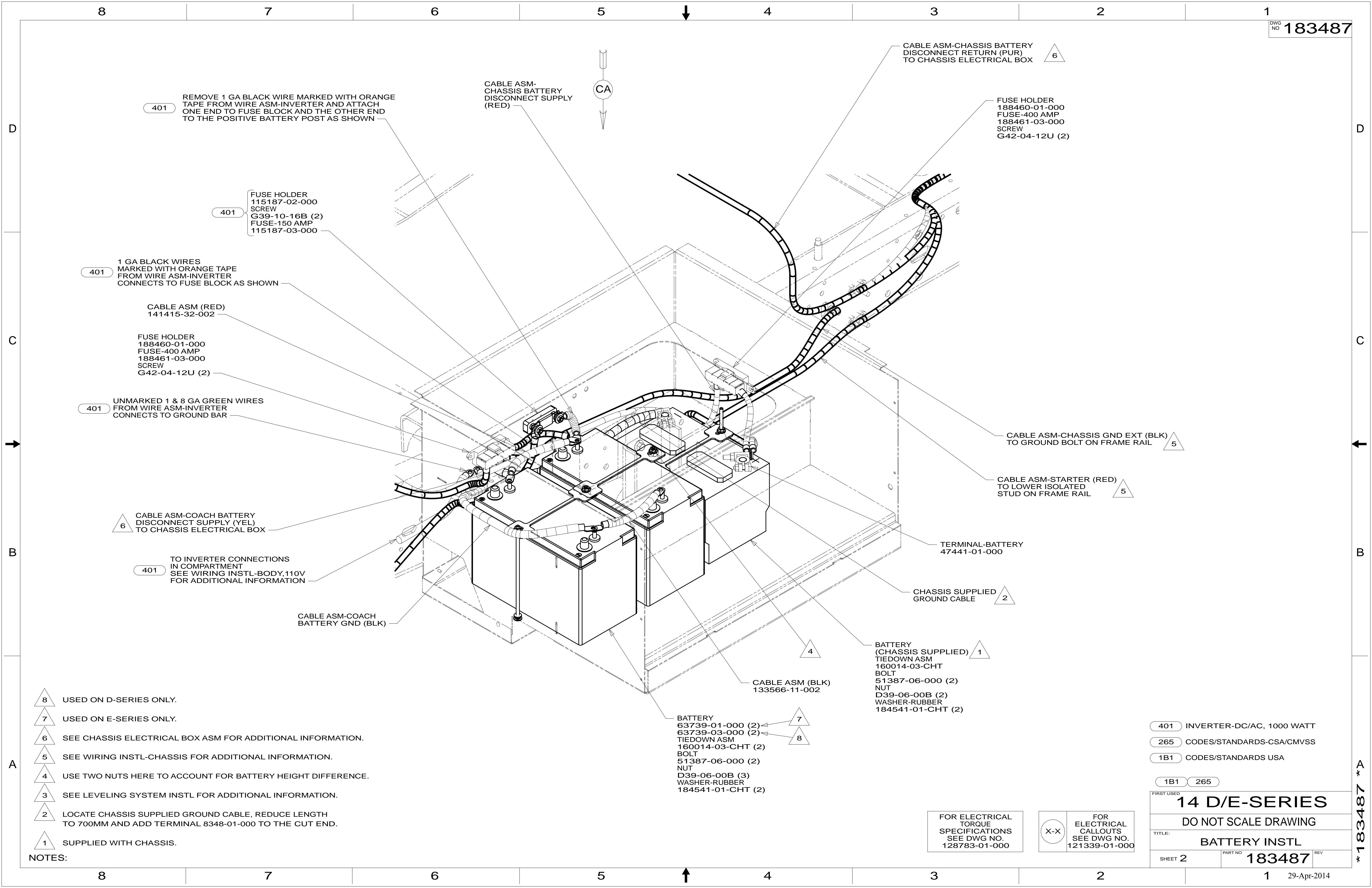
- 15L RESIDENTIAL REFRIGERATOR PKG
- 60M HYDRAULIC LEVEL JACKS-AUTO
- 401 INVERTER-DC/AC, 1000 WATT
- 265 CODES/STANDARDS-CSA/CMVSS
- 1B1 CODES/STANDARDS USA

		COPYRIGHT 2014 WINNEBAGO INDUSTRIES, INC.
UNSPECIFIED TOLERANCES ARE: WHOLE DIM (X) : 3 ONE-PLACE (X.X) : 1.5 TWO-PLACE (X.XX) : 0.50 ANGLE : 1°	MATERIAL: REFER TO ES0018 FOR FASTENER TIGHTENING GUIDELINES	
DFT-ORIG CHKR P.E. M.E. DSNR	ALL DIMENSIONS ARE IN MILLIMETERS FIRST USED <b>14 D/E-SERIES</b>	
THIRD ANGLE PROJECTION	DO NOT SCALE DRAWING	
TITLE: <b>BATTERY INSTL</b>		
SHEET 1 OF 7	PART NO <b>183487</b>	REV

FOR ELECTRICAL TORQUE SPECIFICATIONS SEE DWG NO. 128783-01-000

X-X FOR ELECTRICAL CALLOUTS SEE DWG NO. 121339-01-000

\* 183487 \* A



- 8 USED ON D-SERIES ONLY.
- 7 USED ON E-SERIES ONLY.
- 6 SEE CHASSIS ELECTRICAL BOX ASM FOR ADDITIONAL INFORMATION.
- 5 SEE WIRING INSTL-CHASSIS FOR ADDITIONAL INFORMATION.
- 4 USE TWO NUTS HERE TO ACCOUNT FOR BATTERY HEIGHT DIFFERENCE.
- 3 SEE LEVELING SYSTEM INSTL FOR ADDITIONAL INFORMATION.
- 2 LOCATE CHASSIS SUPPLIED GROUND CABLE, REDUCE LENGTH TO 700MM AND ADD TERMINAL 8348-01-000 TO THE CUT END.
- 1 SUPPLIED WITH CHASSIS.

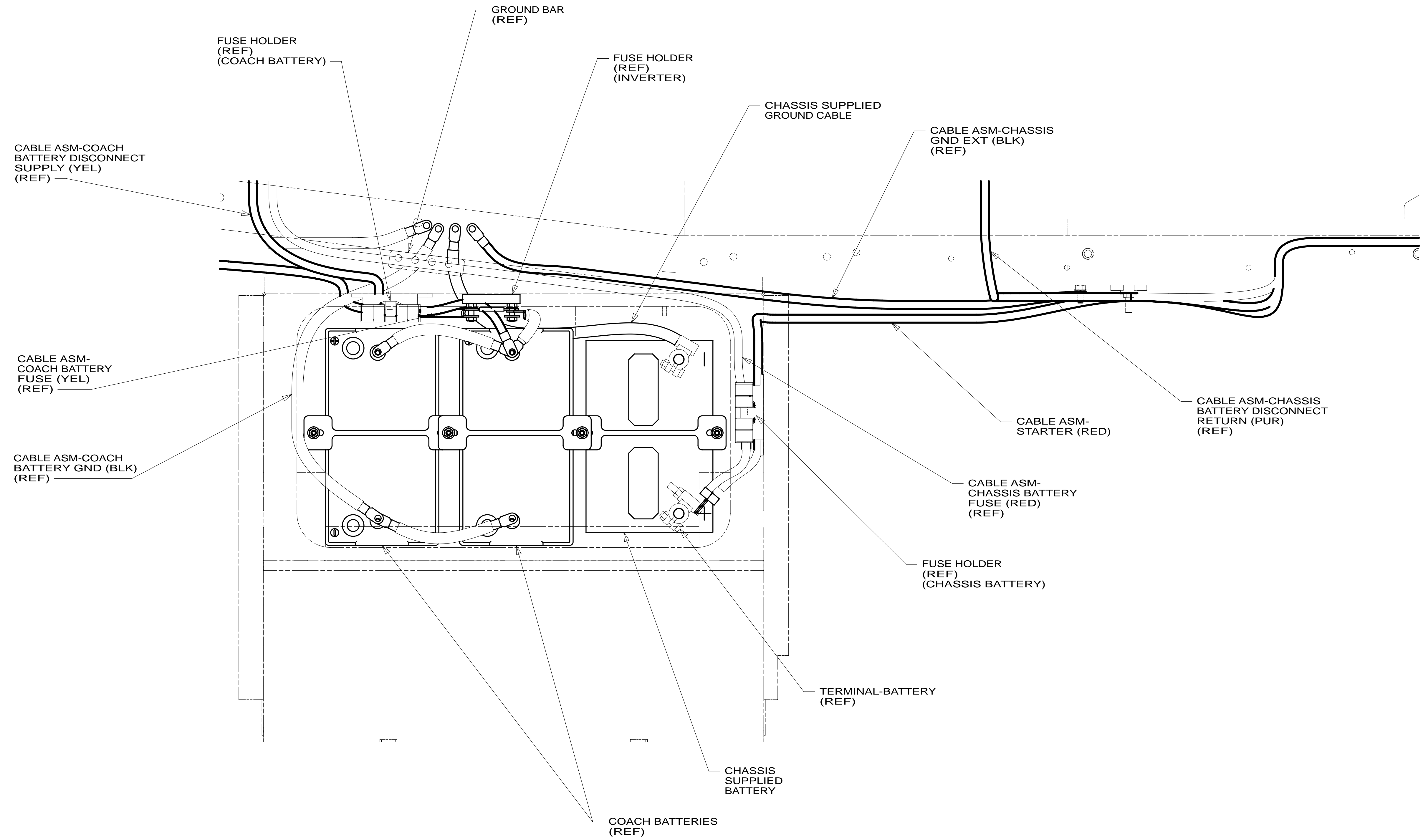
- 401 INVERTER-DC/AC, 1000 WATT
- 265 CODES/STANDARDS-CSA/CMVSS
- 1B1 CODES/STANDARDS USA

FIRST USED	
<b>14 D/E-SERIES</b>	
<b>DO NOT SCALE DRAWING</b>	
TITLE: <b>BATTERY INSTL</b>	
SHEET 2	PART NO <b>183487</b> REV

FOR ELECTRICAL TORQUE SPECIFICATIONS SEE DWG NO. 128783-01-000

FOR ELECTRICAL CALLOUTS SEE DWG NO. 121339-01-000

\* 183487 \* A



265 CODES/STANDARDS-CSA/CMVSS

1B1 CODES/STANDARDS USA

1B1 265

FIRST USED 14 D/E-SERIES

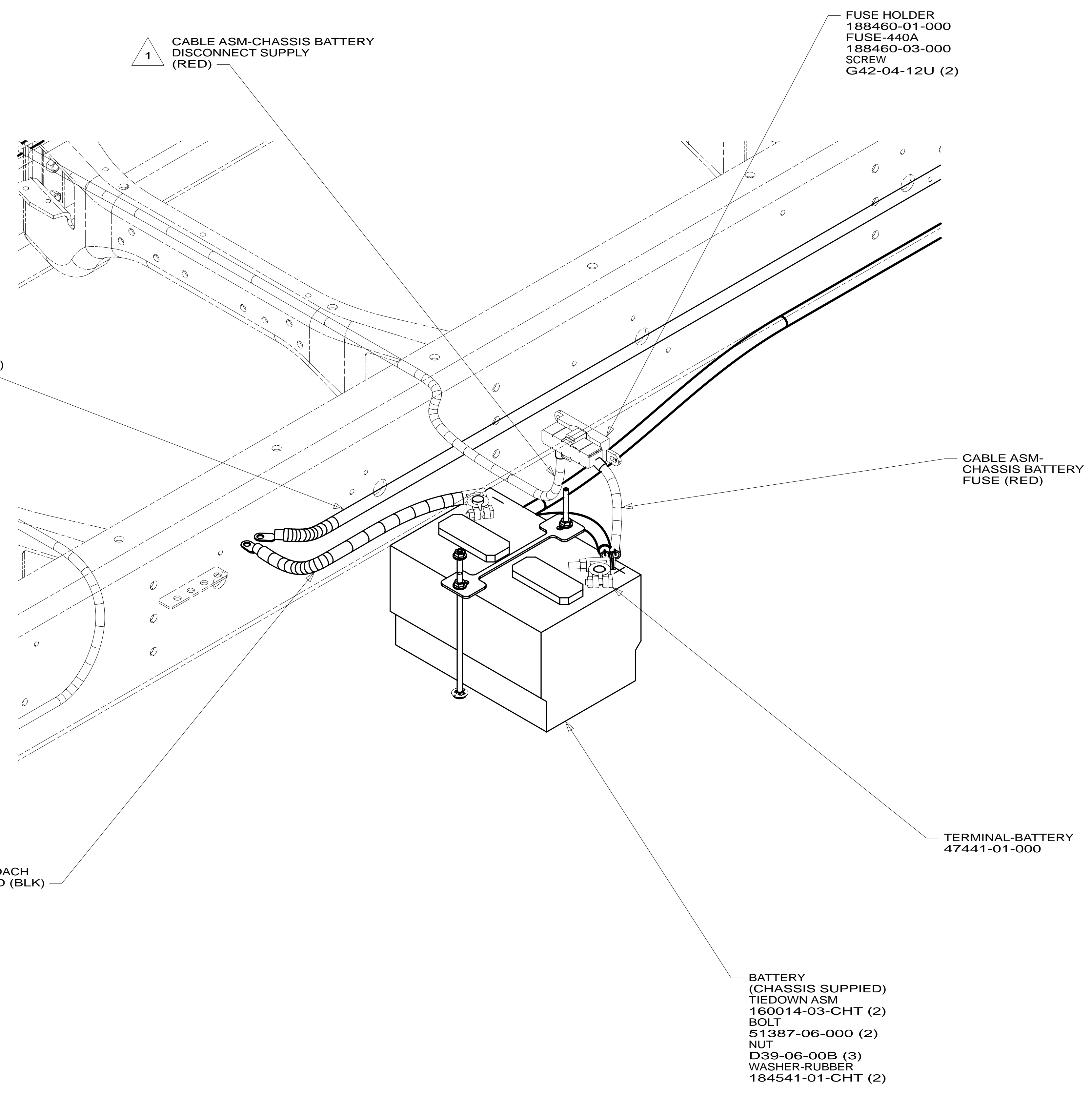
DO NOT SCALE DRAWING

TITLE: BATTERY INSTL

SHEET 3 PART NO 183487 REV

FOR ELECTRICAL TORQUE SPECIFICATIONS SEE DWG NO. 128783-01-000

X-X FOR ELECTRICAL CALLOUTS SEE DWG NO. 121339-01-000



2 CABLE ASM-CHASSIS GND EXT (BLK) TO GROUND BOLT ON FRAME RAIL

1 CABLE ASM-CHASSIS BATTERY DISCONNECT SUPPLY (RED)

FUSE HOLDER 188460-01-000  
FUSE-440A 188460-03-000  
SCREW G42-04-12U (2)

CABLE ASM-CHASSIS BATTERY FUSE (RED)

TERMINAL-BATTERY 47441-01-000

BATTERY (CHASSIS SUPPLIED) TIEDOWN ASM 160014-03-CHT (2)  
BOLT 51387-06-000 (2)  
NUT D39-06-00B (3)  
WASHER-RUBBER 184541-01-CHT (2)

CABLE ASM-COACH BATTERY GND (BLK)

- NOTES:
- 2 SEE WIRING INSTL-CHASSIS FOR ADDITIONAL INFORMATION.
  - 1 SEE CHASSIS ELECTRICAL BOX ASM FOR ADDITIONAL INFORMATION.

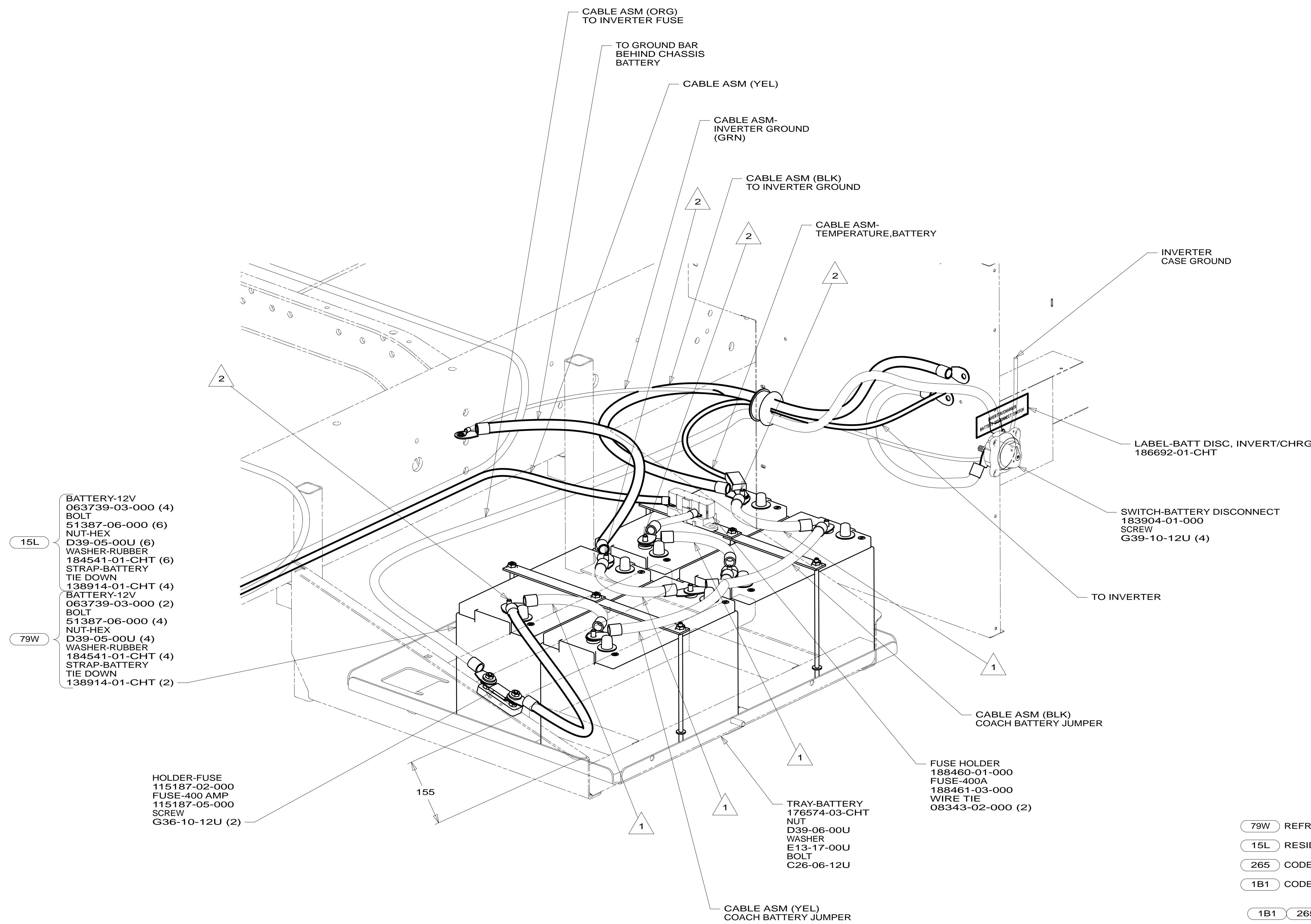
FOR ELECTRICAL TORQUE SPECIFICATIONS SEE DWG NO. 128783-01-000

FOR ELECTRICAL CALLOUTS SEE DWG NO. 121339-01-000

- 265 CODES/STANDARDS-CSA/CMVSS
- 1B1 CODES/STANDARDS USA
- 1B1 265

FIRST USED	
<b>14 D/E-SERIES</b>	
<b>DO NOT SCALE DRAWING</b>	
TITLE: <b>BATTERY INSTL</b>	
SHEET 4	PART NO <b>183487</b> REV

\* 183487 \* A



- 15L BATTERY-12V 063739-03-000 (4) BOLT 51387-06-000 (6) NUT-HEX D39-05-00U (6) WASHER-RUBBER 184541-01-CHT (6) STRAP-BATTERY TIE DOWN 138914-01-CHT (4)
- 79W BATTERY-12V 063739-03-000 (2) BOLT 51387-06-000 (4) NUT-HEX D39-05-00U (4) WASHER-RUBBER 184541-01-CHT (4) STRAP-BATTERY TIE DOWN 138914-01-CHT (2)

- 79W REFRIGERATOR-4 DOOR
- 15L RESIDENTIAL REFRIGERATOR PKG
- 265 CODES/STANDARDS-CSA/CMVSS
- 1B1 CODES/STANDARDS USA

2 CONNECT TO OUTER BATTERY WITH OPTION 79W OPTION 15L SHOWN.

1 CABLE NOT USED WITH OPTION 79W

FOR ELECTRICAL TORQUE SPECIFICATIONS SEE DWG NO. 128783-01-000

X-X FOR ELECTRICAL CALLOUTS SEE DWG NO. 121339-01-000

FIRST USED

### 14 D/E-SERIES

DO NOT SCALE DRAWING

TITLE: BATTERY INSTL

SHEET 5 PART NO 183487 REV

29-Apr-2014

\* 183487 \* A

GENERATOR

INVERTER

LEVELING PUMP

BATTERY DISCONNECT SWITCH

HOUSE BATTERY BANK

CHASSIS BATTERY BANK

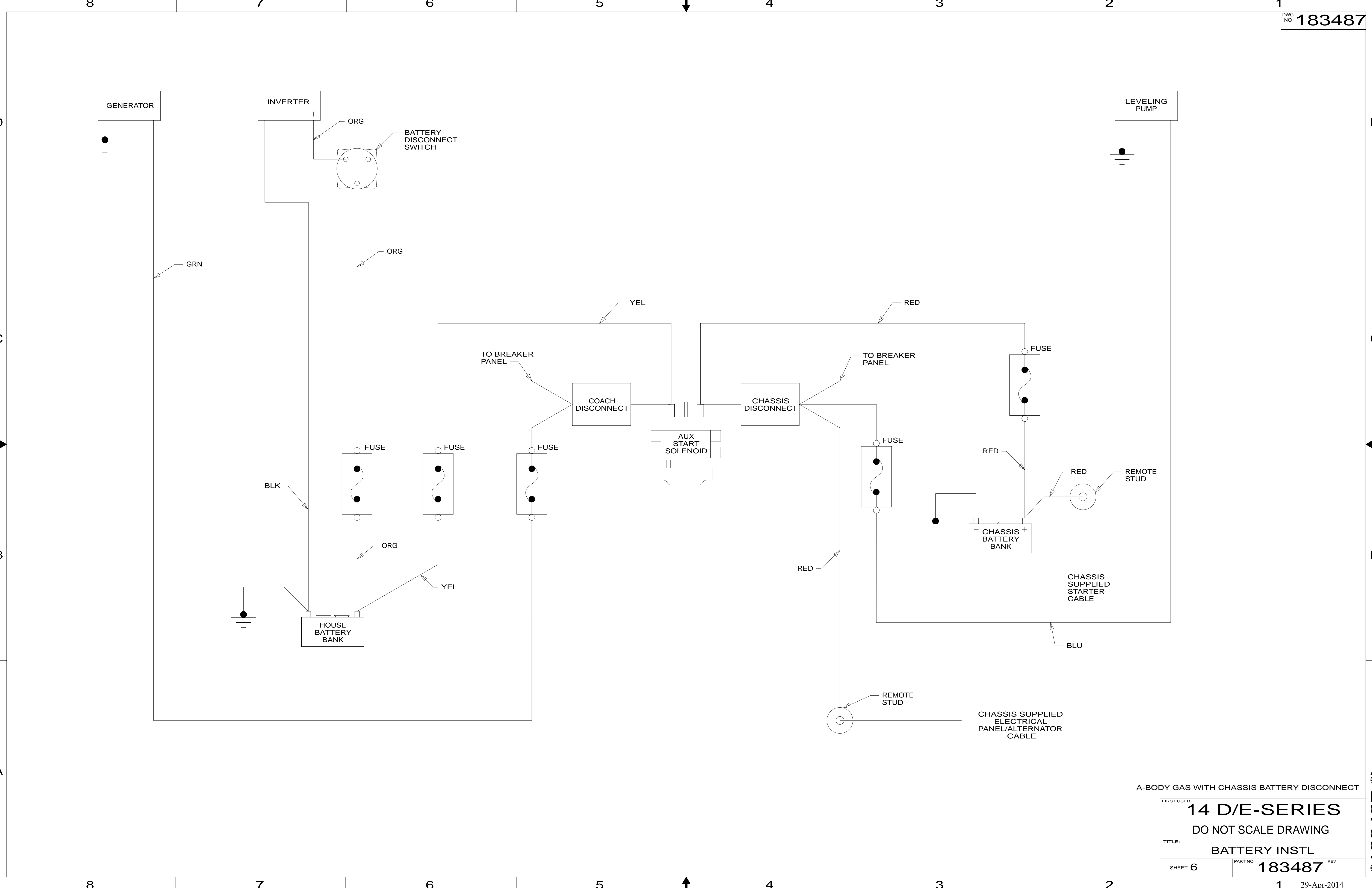
AUX START SOLENOID

COACH DISCONNECT

CHASSIS DISCONNECT

CHASSIS SUPPLIED STARTER CABLE

CHASSIS SUPPLIED ELECTRICAL PANEL/ALTERNATOR CABLE



A-BODY GAS WITH CHASSIS BATTERY DISCONNECT

FIRST USED	<b>14 D/E-SERIES</b>	
TITLE:	DO NOT SCALE DRAWING	
	BATTERY INSTL	
SHEET 6	PART NO <b>183487</b>	REV

\* 183487 \* A

GENERATOR

LEVELING PUMP

HOUSE BATTERY BANK

CHASSIS BATTERY BANK

AUX START SOLENOID

COACH DISCONNECT

FUSE

FUSE

FUSE

FUSE

GRN

YEL

RED

TO BREAKER PANEL

TO BREAKER PANEL

RED

FUSE

RED

CHASSIS SUPPLIED STARTER CABLE

BLU

CHASSIS SUPPLIED ELECTRICAL PANEL/ALTERNATOR CABLE

A-BODY GAS WITHOUT CHASSIS BATTERY DISCONNECT

FIRST USED	<b>14 D/E-SERIES</b>		
TITLE:	DO NOT SCALE DRAWING		
	BATTERY INSTL		
SHEET 7	PART NO	<b>183487</b>	REV