



DANGER

Danger of electrical shock, burns or death. Always remove all power sources before attempting any repair, service or diagnostic work. Power can be present from shore power, generator, inverter or battery. All power sources must be disabled and secured before performing any service.



CAUTION

If you lack the skills, tools or equipment to perform diagnostic or repair work leave such work to an authorized Winnebago Industries dealer or other qualified shop.

DRAWING NO.	MODEL	SHEET
183486-01	E27N	1,2,4,6
183486-02	E26HE	1,2,4,5,6
183486-03	E30T	1,2,4,6
183486-04	E35B	1,2,3,5,6
183486-05	E35F	1,2,5,6,7
183486-06	E31KE	1,2,4,5,6
183486-07	E36Y	1,2,5,6,8

		E26HE	E27N	E30T	E35B	E35F	E31KE	E36Y
RED	1B1	136135-07-045	136135-07-091	136135-07-073	136135-07-062	136135-07-055	136135-07-058	136135-07-057
	265	136136-07-045	136136-07-091	136136-07-073	136136-07-062	136136-07-055	136136-07-058	136136-07-057
YEL	1B1	136131-05-010	136131-05-070	136131-05-024	136131-05-037	136131-05-012	136131-05-050	136131-05-012
	265	136134-05-010	136134-05-070	136134-05-024	136134-05-037	136134-05-012	136134-05-050	136134-05-012
YEL-2	1B1				136131-13-051	136131-13-042		
	265				136134-13-051	136134-13-042		
BRN	1B1	136131-03-051	136131-03-056	136131-03-043	136131-03-122	136131-03-077	136131-03-100	136131-03-115
	265	136134-03-051	136134-03-056	136134-03-043	136134-03-122	136134-03-077	136134-03-100	136134-03-115
BLU	1B1	136131-02-085	136131-02-150	136131-02-140	136131-02-142	136131-02-200	136131-02-129	136131-02-115
	265	136134-02-085	136134-02-150	136134-02-140	136134-02-142	136134-02-200	136134-02-129	136134-02-115
MAIN	1B1	136137-01-065	136137-01-020	136137-01-064			136137-01-081	176841-01-024
	265	136138-01-065	136138-01-020	136138-01-064			136138-01-081	176841-01-024
MAIN	1B1				136139-01-084	136139-01-080		
	265				136140-01-084	136140-01-080		
GRN	1B1				136135-08-062	136135-08-055		136135-08-057
	265				136136-08-062	136136-08-055		136136-08-057
GRY	1B1					136131-15-050		
	265					136134-15-050		
PUR	1B1				136131-04-047	136131-04-047		136131-04-020
	265				136134-04-047	136134-04-047		136134-04-020
BLK	1B1	136135-06-017	136135-06-080	136135-06-022	136131-06-062	136131-06-054	136135-06-061	136131-06-012
	265	136136-06-017	136136-06-080	136136-06-022	136134-06-062	136134-06-054	136136-06-061	136134-06-012
WHT	1B1		136135-09-030	136135-09-053	136135-09-027	136135-09-030		136135-09-024
	265		136136-09-030	136136-09-053	136136-09-027	136136-09-030		136136-09-024
GLD	1B1							136131-10-035
	265							136134-10-035
GLD-2	1B1							136131-20-035
	265							136134-20-035
GROUND ATS			136145-01-015	136145-01-042	136145-01-062	136145-01-048		136145-01-015
GROUND MAIN		178545-01-012	178545-01-024	178545-01-015	136145-01-050	136145-01-056	178545-01-020	136145-01-024
GROUND CONVERTER		178545-01-019						

RELEASE A REV/DATE DWG NO. 183486
 REV ZONE REVISION RECORD DATE DFR-ORIG

- ELECTRICAL SYSTEM-50 AMP
- ELECTRICAL SYSTEM 30 AMP
- CODES/STANDARDS-CSA/CMVSS
- CODES/STANDARDS USA



DFTR	ORIG. DATE
CHKR	ALL DIMENSIONS ARE IN MILLIMETERS
P.E.	
M.E.	FIRST USED
DSNR	14 E-SERIES

UNSPECIFIED TOLERANCES ARE:
 WHOLE DIM (X) : 3
 ONE-PLACE (X.X) : 1.5
 TWO-PLACE (X.XX) : 0.50
 ANGLE : 1°
 THIRD ANGLE PROJECTION

DO NOT SCALE DRAWING REFER TO ES0018 FOR FASTENER TIGHTENING GUIDELINES

TITLE: **LOAD CENTER/ATS ASM**
 SHEET 1 OF 8 PART NO. 183486 REV

- NOTES:
- SEE DETAIL FD FOR EMS INSTALLATION.
 - SEE DETAIL FB FOR CONNECTOR INSTALLATION.
 - 1. ALL GROUNDS WIRES TO BE COVERED WITH TUBING 8041-02-000.

FOR ELECTRICAL TORQUE SPECIFICATIONS SEE DWG NO. 128783-01-000

FOR ELECTRICAL CALLOUTS SEE DWG NO. 121339-01-000

* 183486 *

		E26HE	E27N	E30T	E35B	E35F	E31KE	E36Y
THROW IN WIRE #1	1B1	136131-03-061	136131-03-012	136131-02-010	136131-12-055	136131-03-055	136131-03-032	136131-04-019
	265	136134-03-061	136134-03-012	136134-02-010	136134-12-055	136134-03-055	136134-03-032	136134-04-019
THROW IN WIRE #2	1B1	136131-05-012	136131-02-043	136131-19-180	136131-12-150	136131-12-190		136131-06-024
	265	136134-05-012	136134-02-043	136134-19-180	136134-12-150	136134-12-190		136134-06-024
THROW IN WIRE #3	1B1		136131-03-011 401	136131-03-009 401	136131-04-009 401	136131-04-007 401		136131-05-024
	265		136134-03-011 401	136134-03-009 401	136134-04-009 401	136134-04-007 401		136134-05-024
THROW IN WIRE #4	1B1		136131-19-011 401	136131-19-009 401	136131-12-009 401	136131-12-007 401		136131-03-020
	265		136134-19-011 401	136134-19-009 401	136134-12-009 401	136134-12-007 401		136134-03-020
THROW IN WIRE #5	1B1		136131-19-100	136131-02-003	136131-12-036			136131-04-088
	265		136134-19-100	136134-02-003	136134-12-036			136134-04-088
THROW IN WIRE #6	1B1		136131-19-040	136131-19-025 21R				136131-04-018
	265		136134-19-040	136134-19-025 21R				136134-04-018
THROW IN WIRE #7	1B1			136131-03-036	136131-03-016			136131-03-050
	265			136134-03-036	136134-03-016			136134-03-050
THROW IN WIRE #8	1B1			136131-19-021 21R				136131-02-035
	265			136134-19-021 21R				136134-02-035
THROW IN WIRE #9	1B1							136131-02-055
	265							136134-02-055
GENERATOR CABLE ASM	1B1					136137-01-038		136148-02-048
	265					136138-01-038		136148-02-048
GENERATOR CABLE ASM	1B1				174762-01-049	136137-01-038		
	265				174762-01-049	136138-01-038		
GROUND INVERTER								136145-04-012
SLIDEOUT WIRE #1			136151-02-018	136151-03-031	136151-12-034	136151-03-015	136151-03-016	
SLIDEOUT WIRE #2			136151-05-018		136151-12-032	136151-03-025		
SLIDEOUT WIRE #3			136151-03-018					
SLIDEOUT WIRE #4			136152-06-018					
INVERTER CHARGER MAIN	1B1							136137-01-065
	265							136138-01-065
INVERTER CHARGER SUB MAIN	1B1							136137-01-065
	265							136138-01-065

- DINING/BUFFET/POWERED TV
- INVERTER-DC/AC, 1000 WATT
- CODES/STANDARDS-CSA/CMVSS
- CODES/STANDARDS USA

FIRST USED

14 E-SERIES

DO NOT SCALE DRAWING

TITLE: **LOAD CENTER/ATS ASM**

SHEET 2 PART NO **183486** REV

SEE DETAIL FE FOR ADDITIONAL INFORMATION.
 SEE DETAIL FB FOR CONNECTOR INSTALLATION.

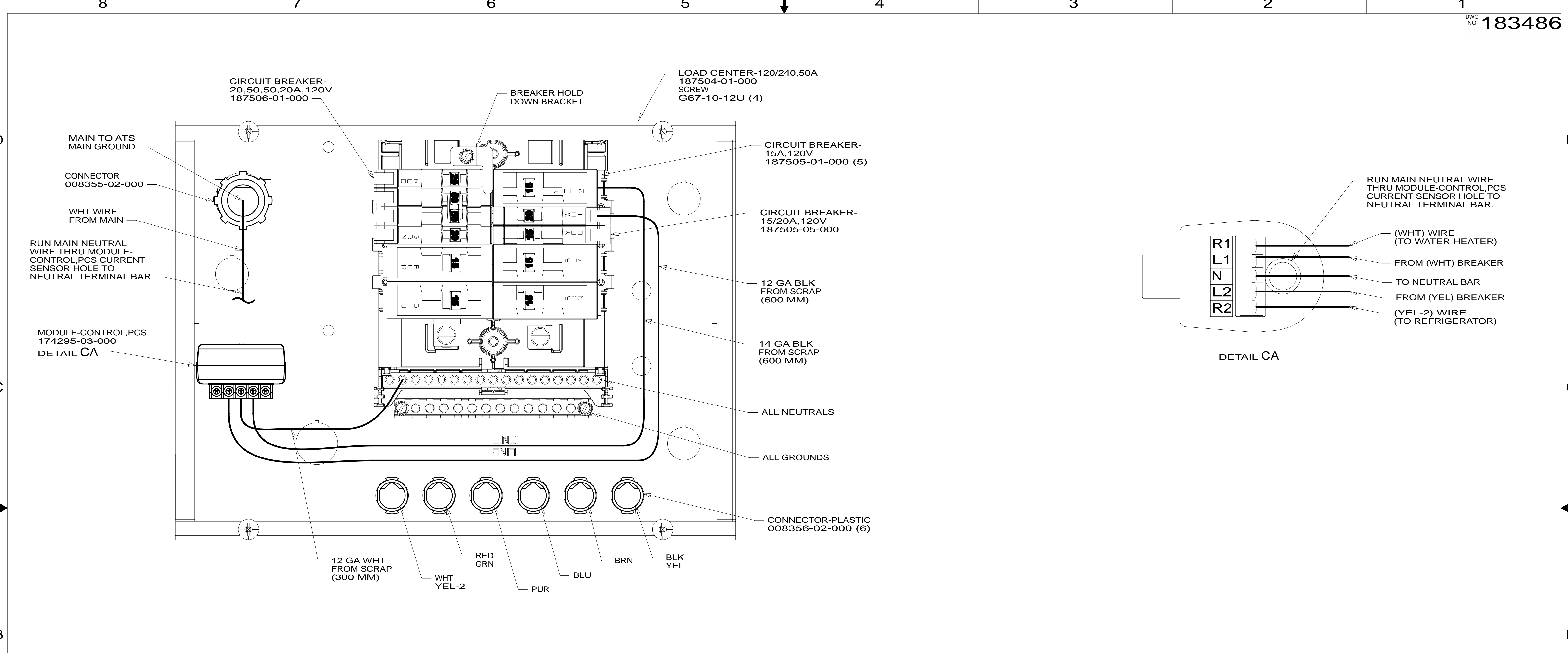
SEE DETAIL FC FOR CONNECTOR INSTALLATION.
 SEE DETAIL FA FOR CONNECTOR INSTALLATION.
 SEE DETAIL FG FOR ADDITIONAL INFORMATION.

NOTES:
 1. ALL GROUNDS WIRES TO BE COVERED WITH TUBING 8041-02-000.

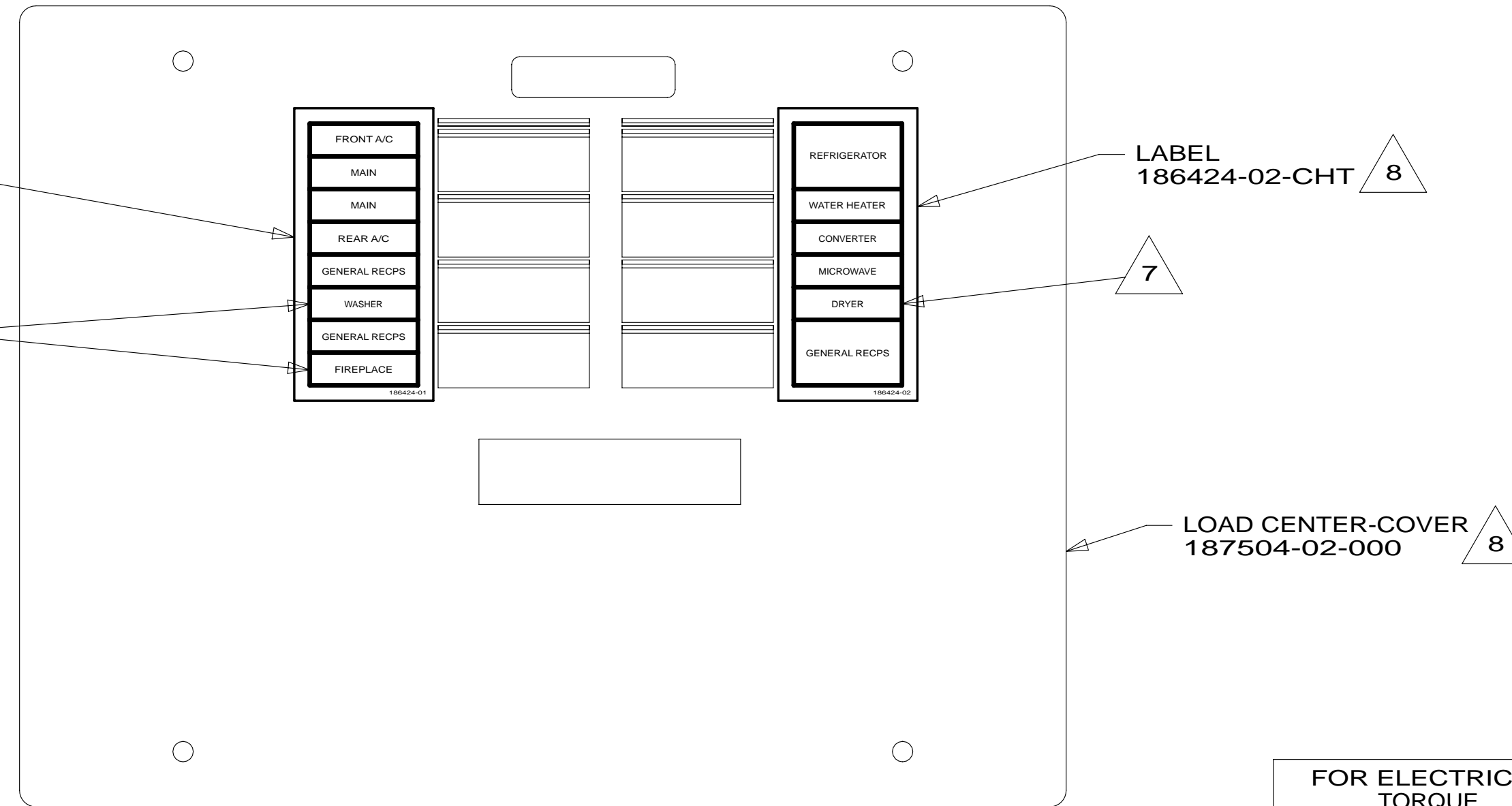
FOR ELECTRICAL TORQUE SPECIFICATIONS SEE DWG NO. 128783-01-000

FOR ELECTRICAL CALLOUTS SEE DWG NO. 121339-01-000

* 183486 * A



- NOTES:**
- 8 INSTALLED BY ASSEMBLY LINE.
 - 7 BLACKEN OUT "WASHER", "DRYER", AND "FIREPLACE" WITH BLACK MARKER.
 - 6. ATTACH WIRES TO BACKSIDE OF LOAD CENTER, USE EXISTING HOLES AND TIE-WIRE 116673-01-000.
 - 5. REMOVE 400MM FROM OUTER JACKET ON ALL WIRES ENTERING LOAD CENTER AND TRIM INDIVIDUAL CONDUCTORS AS REQUIRED TO MAKE INTERNAL CONNECTIONS
 - 4. ALL 110V STRANDED WIRE W/O TERMINALS TO BE STRIPPED 10MM AND SOLDER DIPPED.
 - 3. ALL WIRES TO BE CLAMPED WITHIN 200MM OF ATS.
 - 2. GROUND WIRES ARE NOT SHOWN FOR CLARITY.
 - 1. ALL GROUND WIRES TO BE COVERED WITH TUBING 8041-02-000.



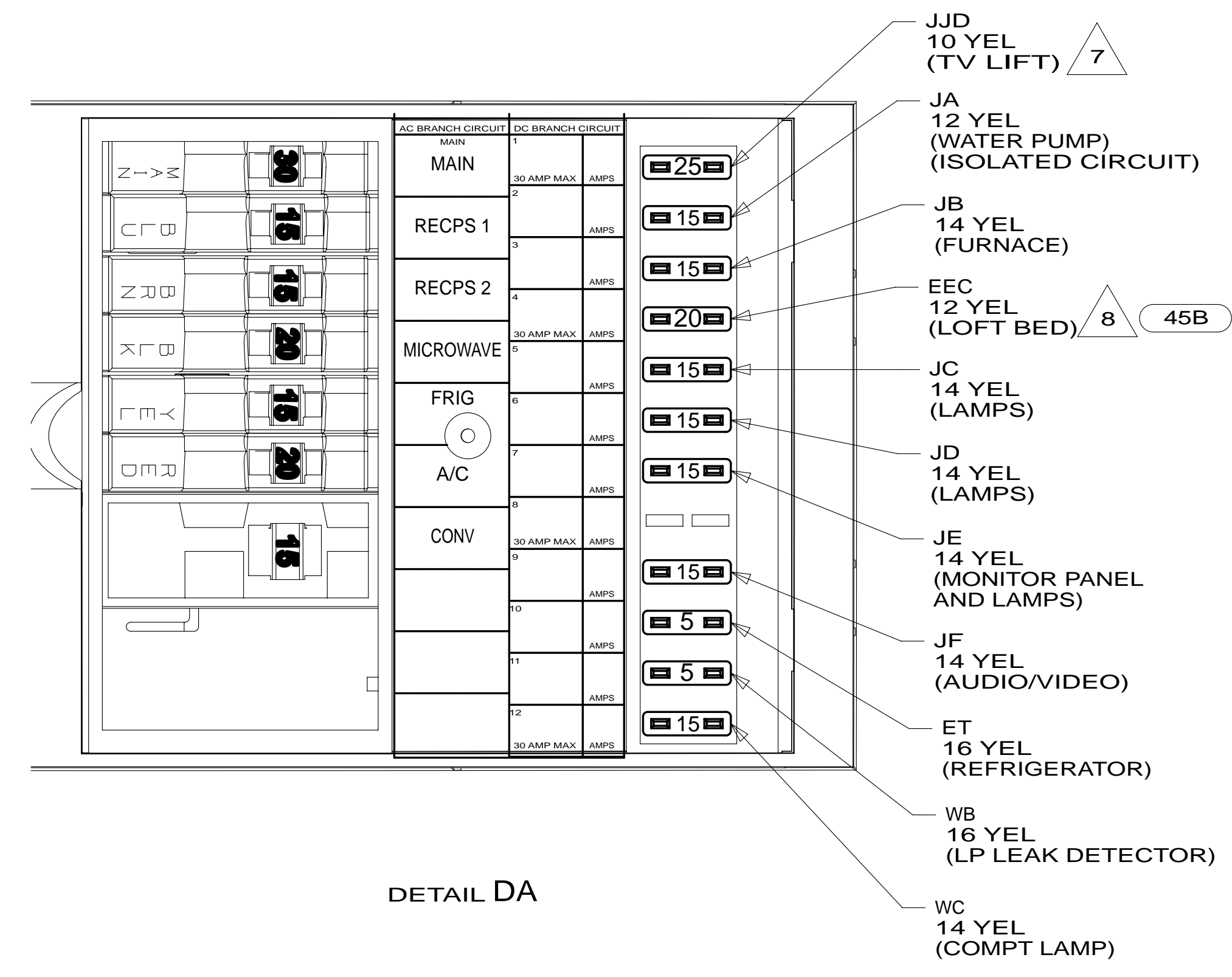
FOR ELECTRICAL TORQUE SPECIFICATIONS SEE DWG NO. 128783-01-000

FOR ELECTRICAL CALLOUTS SEE DWG NO. 121339-01-000

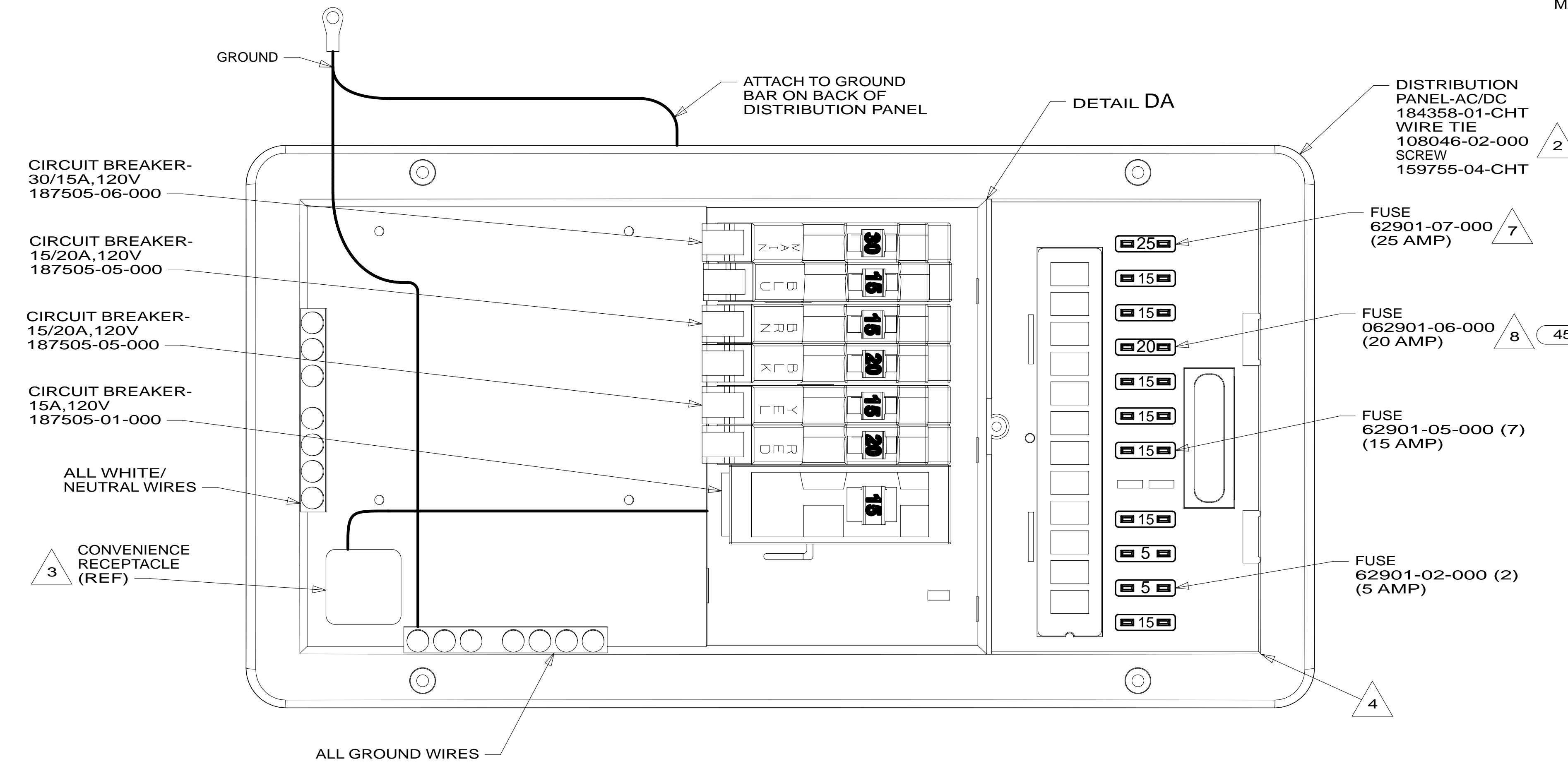
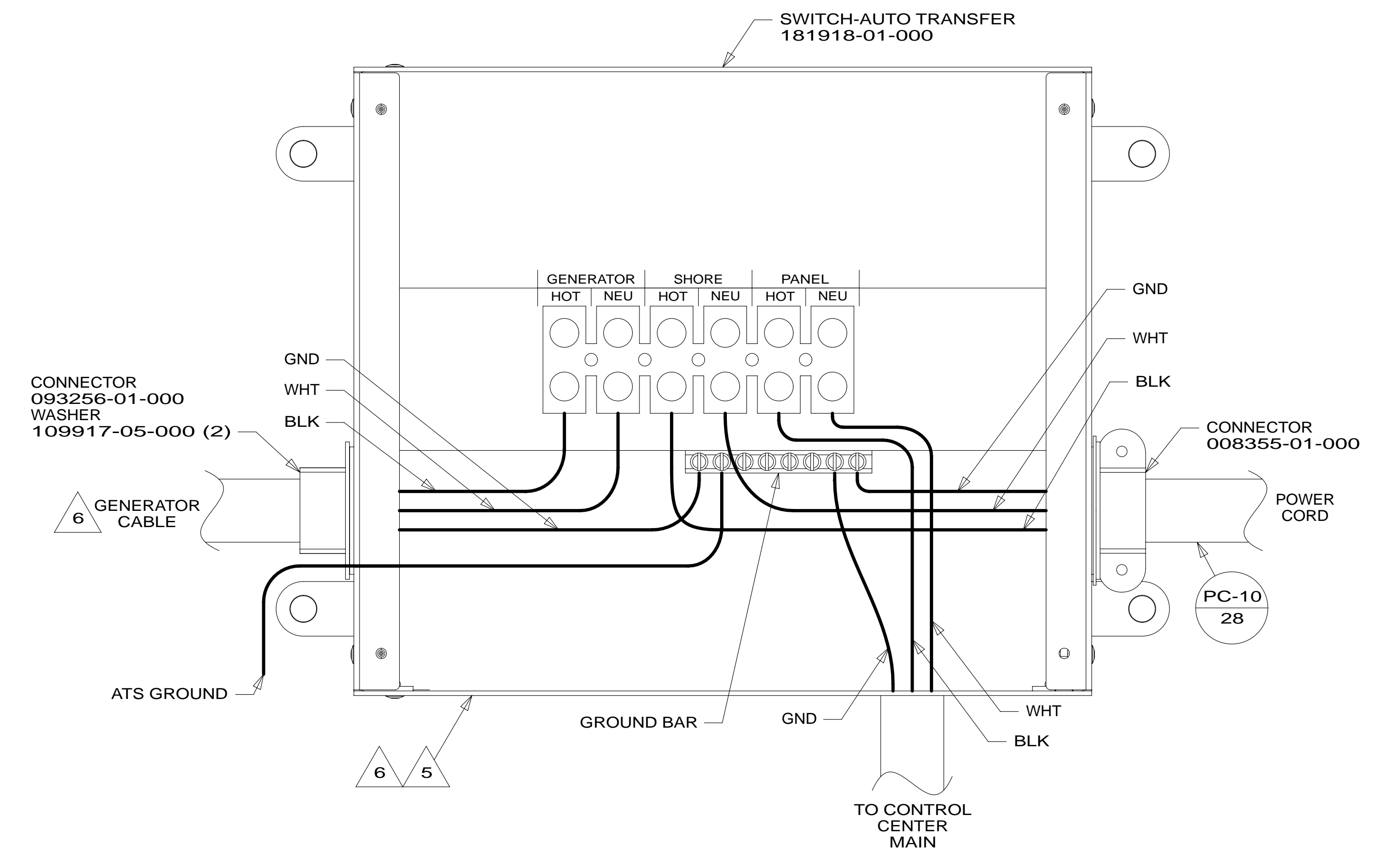
- 53D WTR HTR-6GAL/ELE/LP/MOTORAID
- 29R AC HEAT PUMP-2 HI EFFICIENCY
- 276 A/C ROOF-HI EFF (2) W/EMS
- 78J ELECTRICAL SYSTEM-50 AMP
- 265 CODES/STANDARDS-CSA/CMVSS
- 1B1 CODES/STANDARDS USA

FIRST USED	
14 E-SERIES	
DO NOT SCALE DRAWING	
TITLE: LOAD CENTER/ATS ASM	
SHEET 3	PART NO. 183486 REV

* 183486 * * A



DETAIL DA



- NOTES:
- 8 NOT USED ON E26HE.
 - 7 USED ON E30T.
 - 6 GENERATOR CABLE ON BOTTOM FOR E30T.
 - 5 NOT USED ON E26HE OR E31KE.
 - 4 SEE WIRING INSTL-BODY, 12V FOR ADDITIONAL INFORMATION.
 - 3 CONNECT BLACK WIRE FROM CONVENIENCE RECEPTACLE TO DEDICATED CIRCUIT BREAKER.
 - 2 ATTACH TO UNUSED SCREW HOLE ON BACK SIDE OF PANEL TO SECURE WIRES.
1. ALL GROUND WIRES TO BE COVERED WITH TUBING 8041-02-000.

- 45B LOFT BED
- 29J AC HEAT PUMP-1
- 25Q A/C ROOF AIR (1) 14,800 BTU
- 12D ELECTRICAL SYSTEM 30 AMP
- 265 CODES/STANDARDS-CSA/CMVSS
- 1B1 CODES/STANDARDS USA

FOR ELECTRICAL TORQUE SPECIFICATIONS SEE DWG NO. 128783-01-000

X-X FOR ELECTRICAL CALLOUTS SEE DWG NO. 121339-01-000

FIRST USED

14 E-SERIES

DO NOT SCALE DRAWING

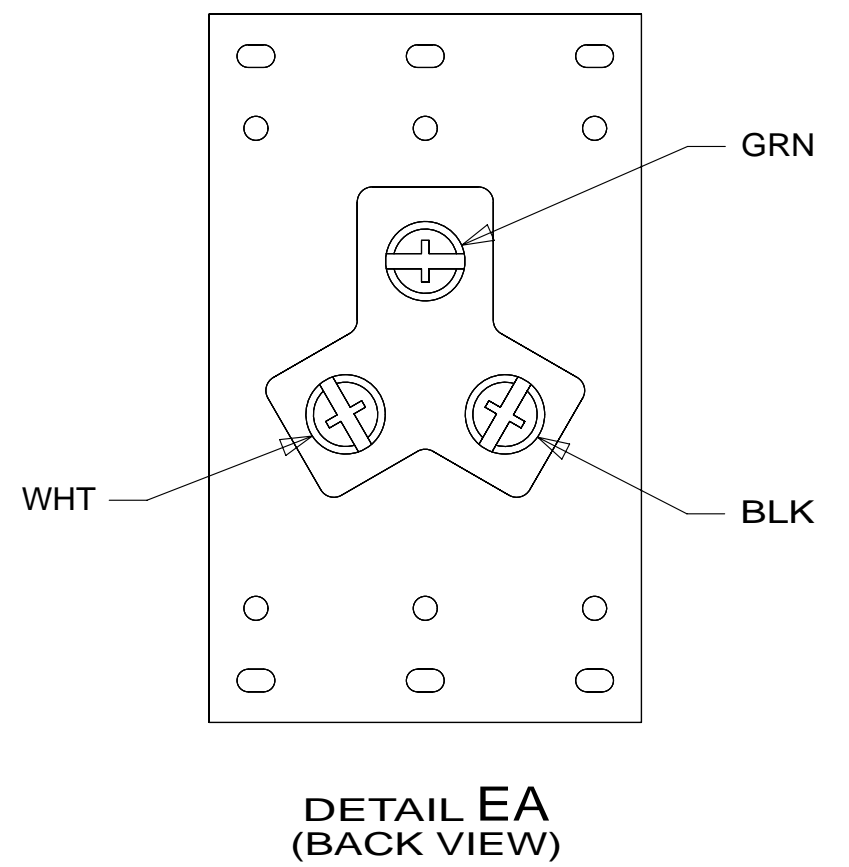
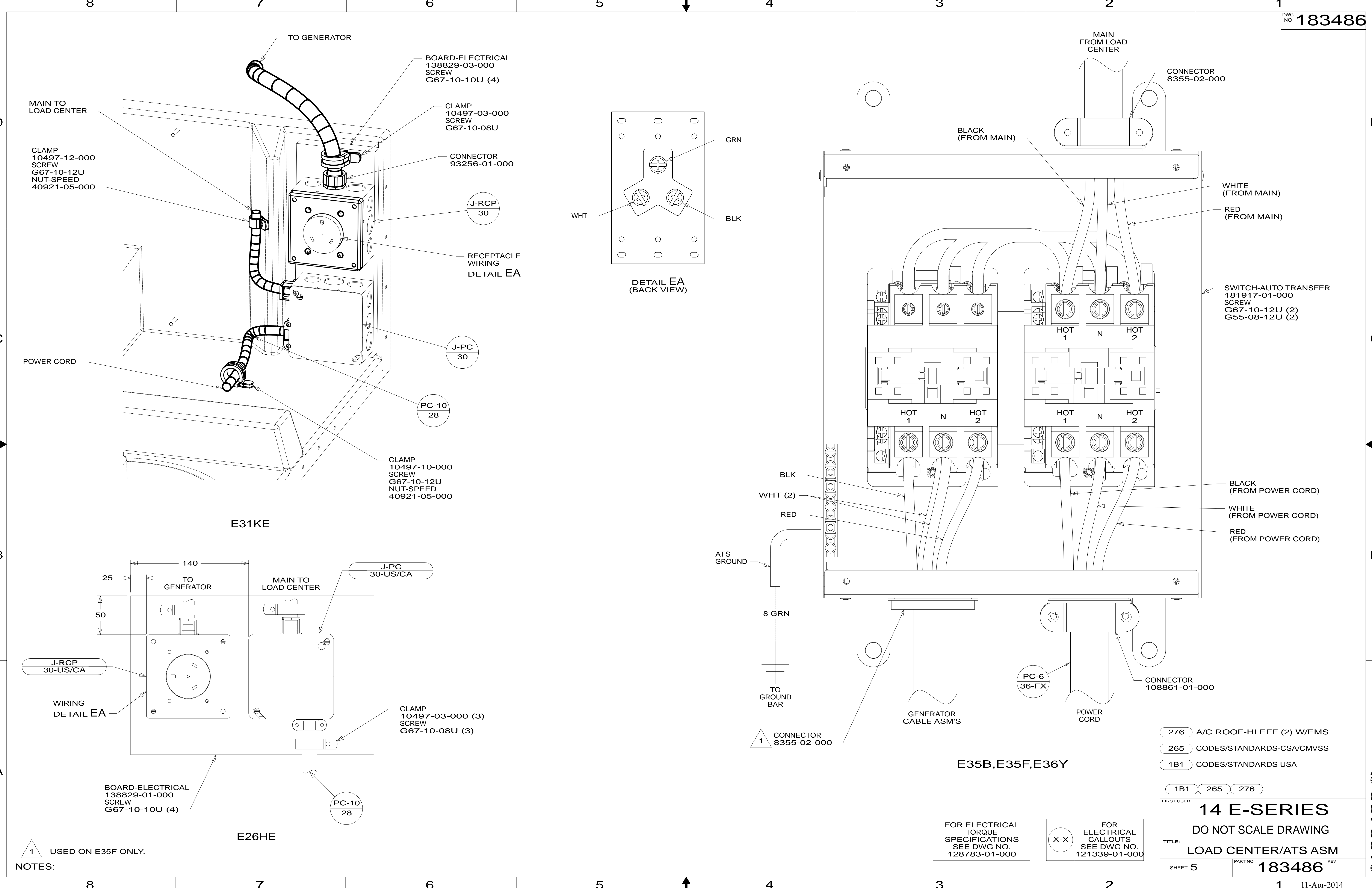
TITLE: LOAD CENTER/ATS ASM

SHEET 4 PART NO 183486 REV

11-Apr-2014

E27N,E30T,E26HE,E31KE

* 183486 * A



CLAMP
10497-12-000
SCREW
G67-10-12U
NUT-SPEED
40921-05-000

BOARD-ELECTRICAL
138829-03-000
SCREW
G67-10-10U (4)

CLAMP
10497-03-000
SCREW
G67-10-08U

CONNECTOR
93256-01-000

J-RCP
30

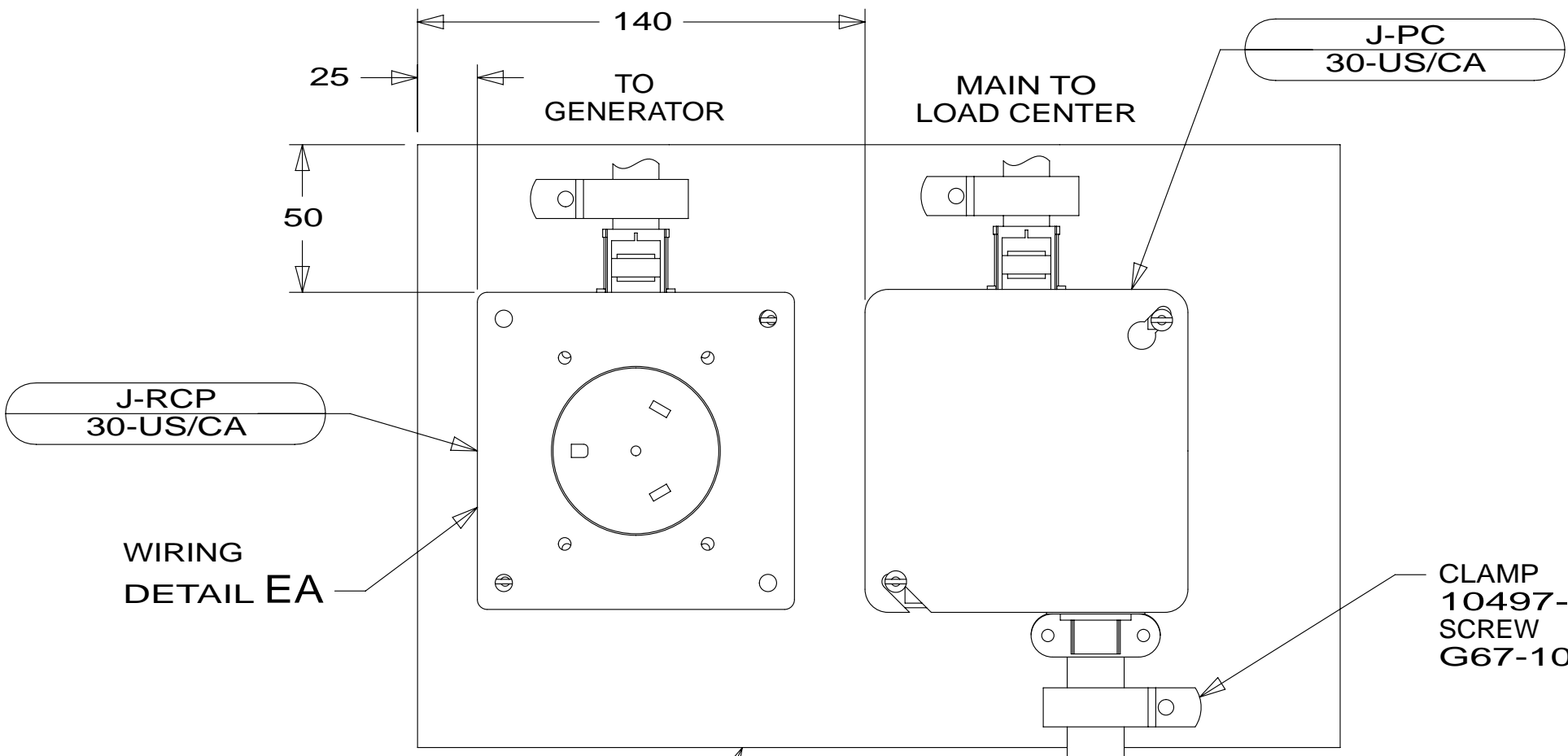
RECEPTACLE
WIRING
DETAIL EA

J-PC
30

PC-10
28

CLAMP
10497-10-000
SCREW
G67-10-12U
NUT-SPEED
40921-05-000

E31KE



BOARD-ELECTRICAL
138829-01-000
SCREW
G67-10-10U (4)

PC-10
28

E26HE

BLK
WHT (2)
RED

ATS GROUND

8 GRN

TO GROUND BAR

CONNECTOR
8355-02-000

E35B, E35F, E36Y

BLACK (FROM MAIN)
WHITE (FROM MAIN)
RED (FROM MAIN)

CONNECTOR
8355-02-000

WHITE (FROM MAIN)
RED (FROM MAIN)

BLACK (FROM POWER CORD)
WHITE (FROM POWER CORD)
RED (FROM POWER CORD)

SWITCH-AUTO TRANSFER
181917-01-000
SCREW
G67-10-12U (2)
G55-08-12U (2)

- 276 A/C ROOF-HI EFF (2) W/EMS
- 265 CODES/STANDARDS-CSA/CMVSS
- 1B1 CODES/STANDARDS USA

1B1 265 276

FIRST USED
14 E-SERIES

DO NOT SCALE DRAWING

TITLE:
LOAD CENTER/ATS ASM

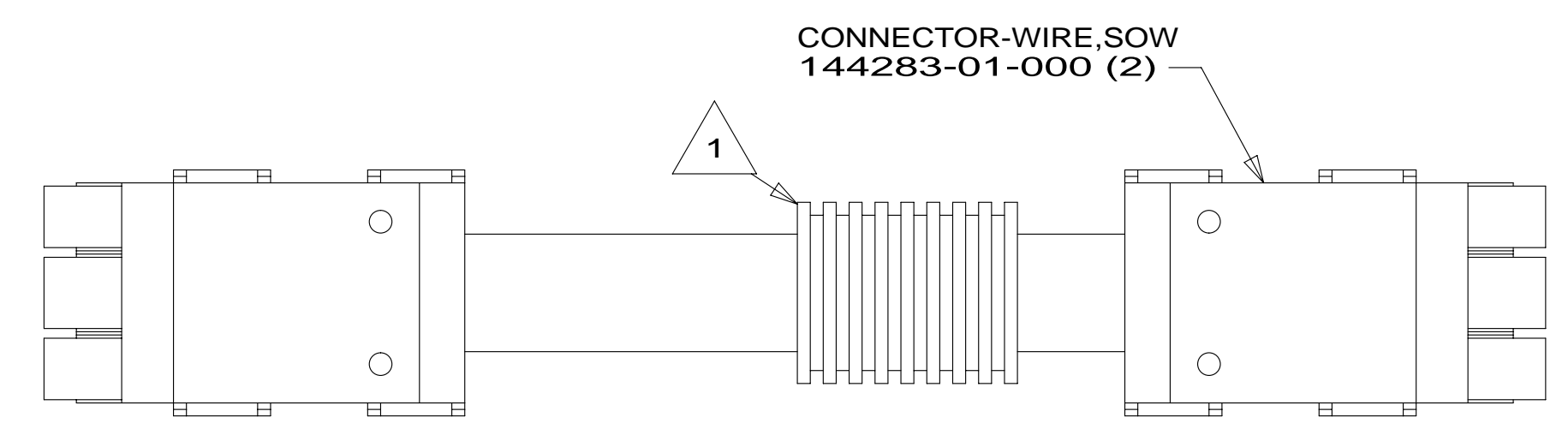
SHEET 5 PART NO **183486** REV

FOR ELECTRICAL
TORQUE
SPECIFICATIONS
SEE DWG NO.
128783-01-000

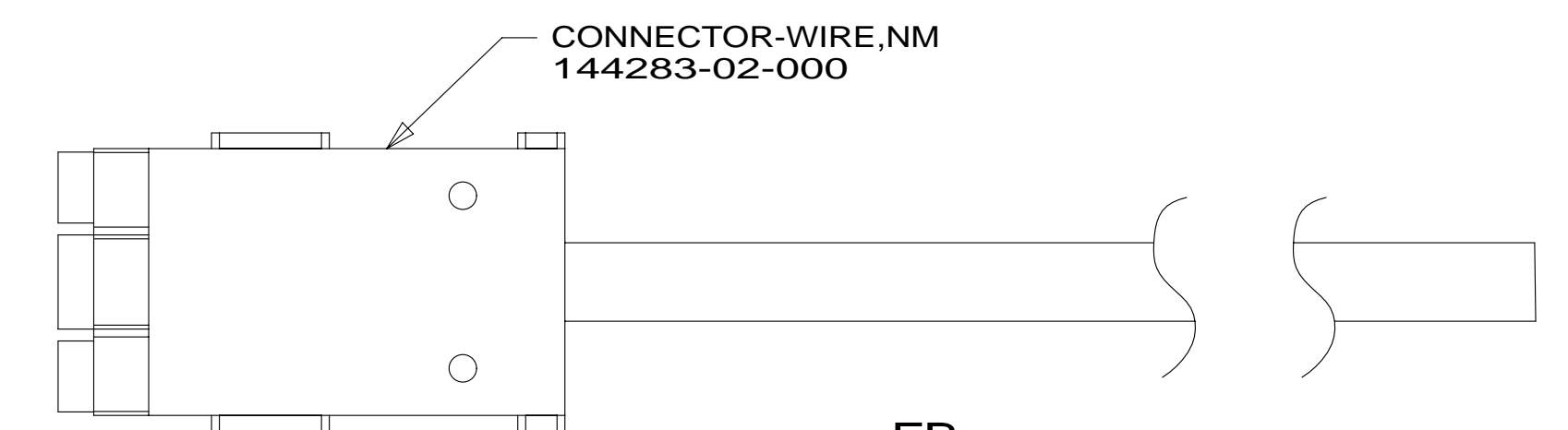
FOR ELECTRICAL
CALLOUTS
SEE DWG NO.
121339-01-000

NOTES:
1 USED ON E35F ONLY.

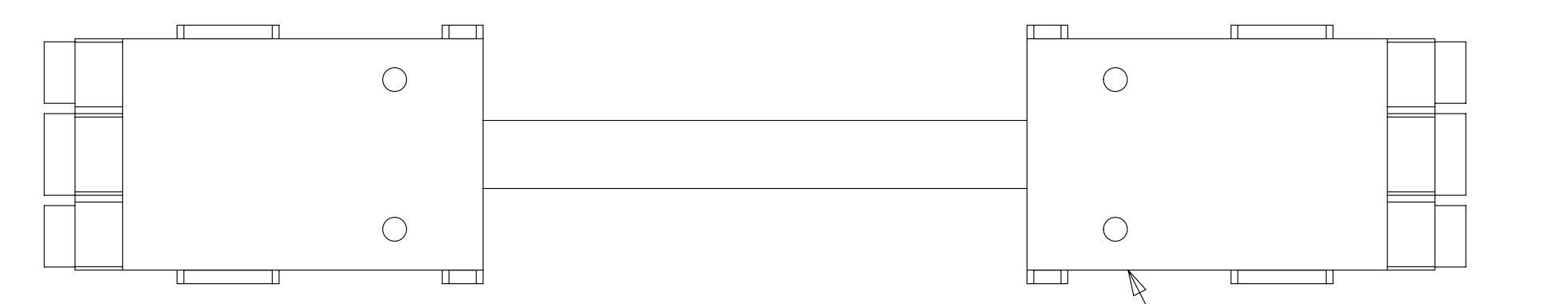
* 183486 * A



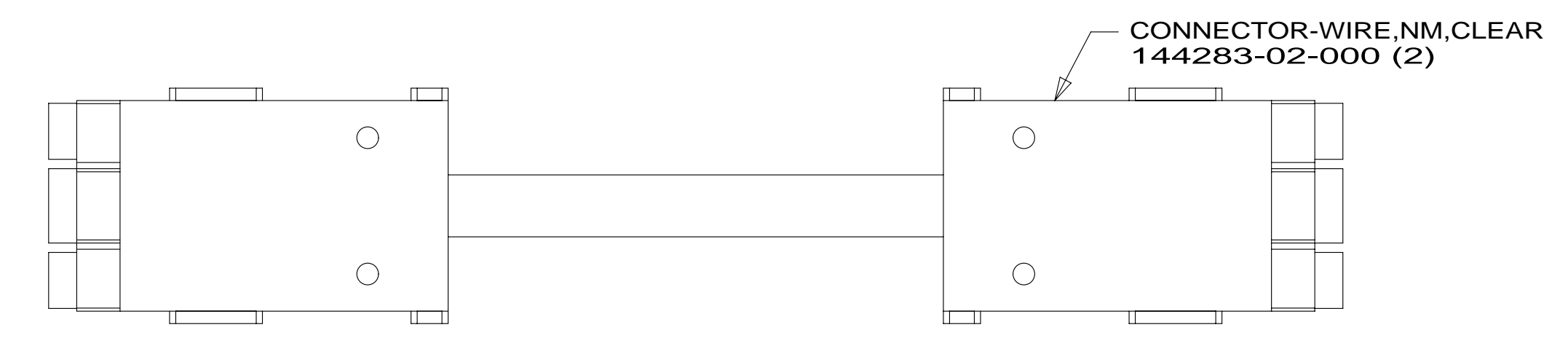
DETAIL FA



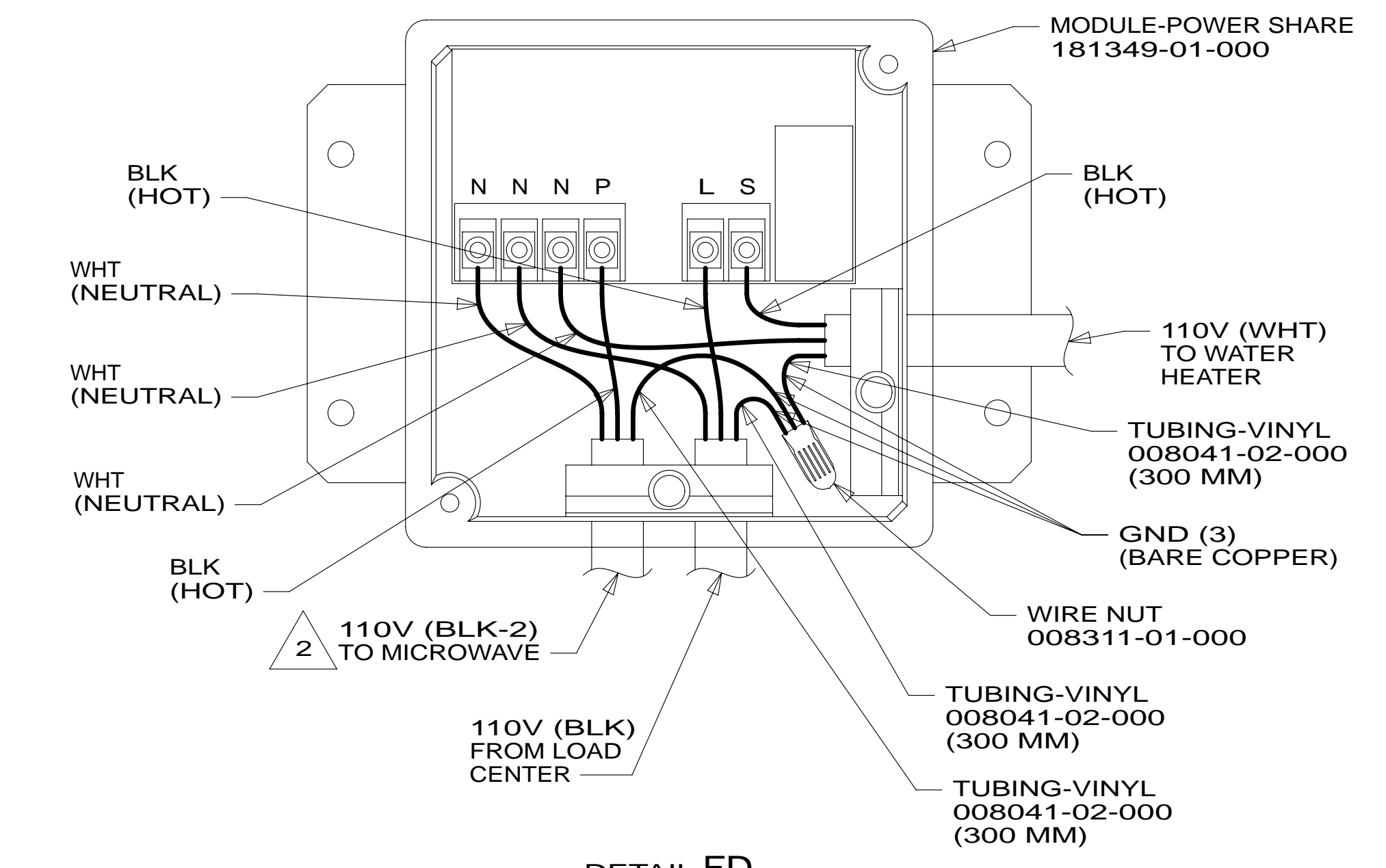
DETAIL FB



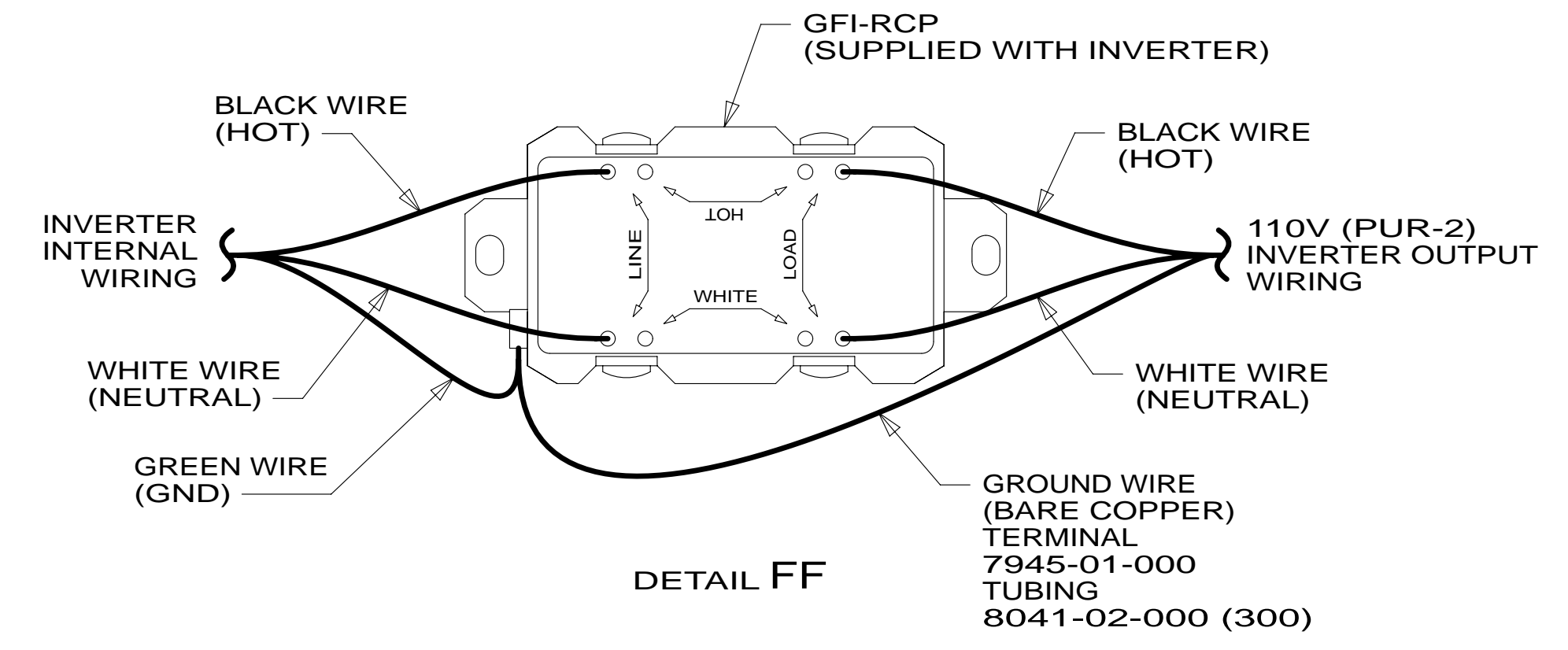
DETAIL FC



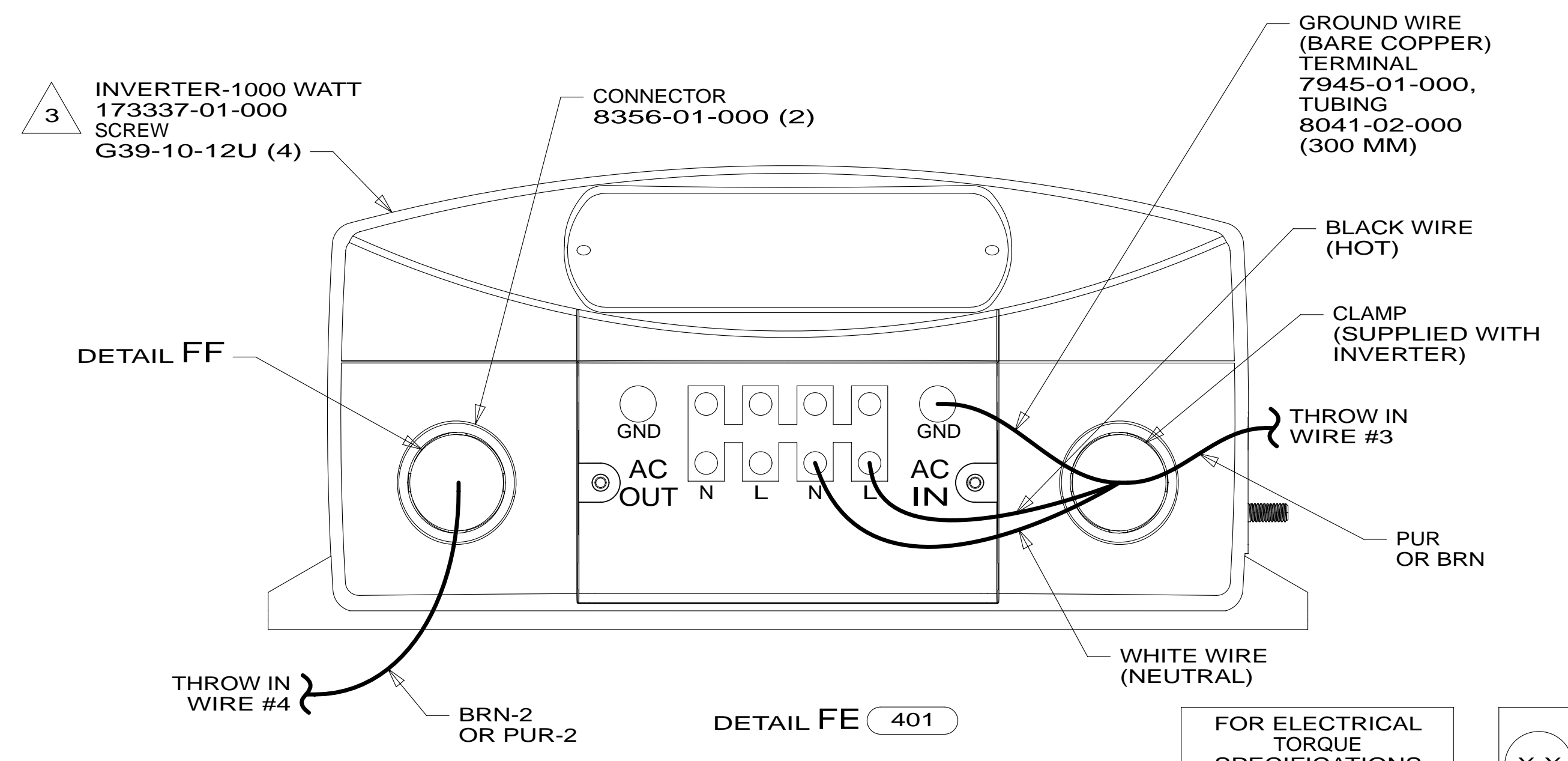
DETAIL FG



DETAIL FD



DETAIL FF



DETAIL FE (401)

- NOTES:
- 3 INVERTER SUPPLIED WITH REMOTE PANEL. SEND PANEL TO MANUFACTURING LINE.
 - 2 ON E27N, MEASURE 700 MM FROM THE BACK OF THE LOAD CENTER, LOOP THE BLACK WIRE AND CONNECT AS SHOWN. ON THE E30T, MEASURE 1200 MM FROM THE BACK OF THE LOAD CENTER.
 - 1 APPLY 300MM OF CONDUIT-CONVOLUTE 41953-05-000 OVER WIRE AT DIMENSION SHOWN AND SECURE BOTH ENDS OF TUBING TO WIRE WITH TAPE 8363-01-000.

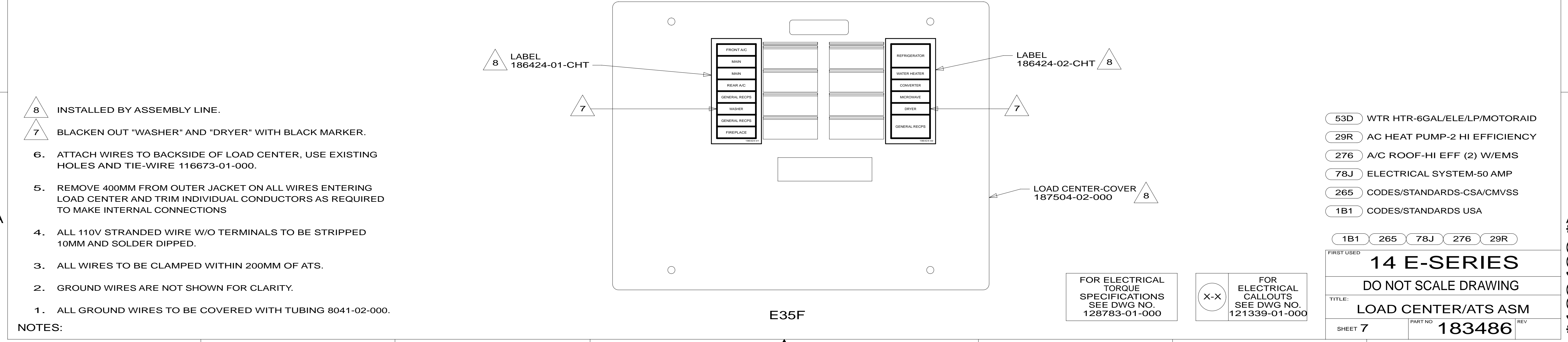
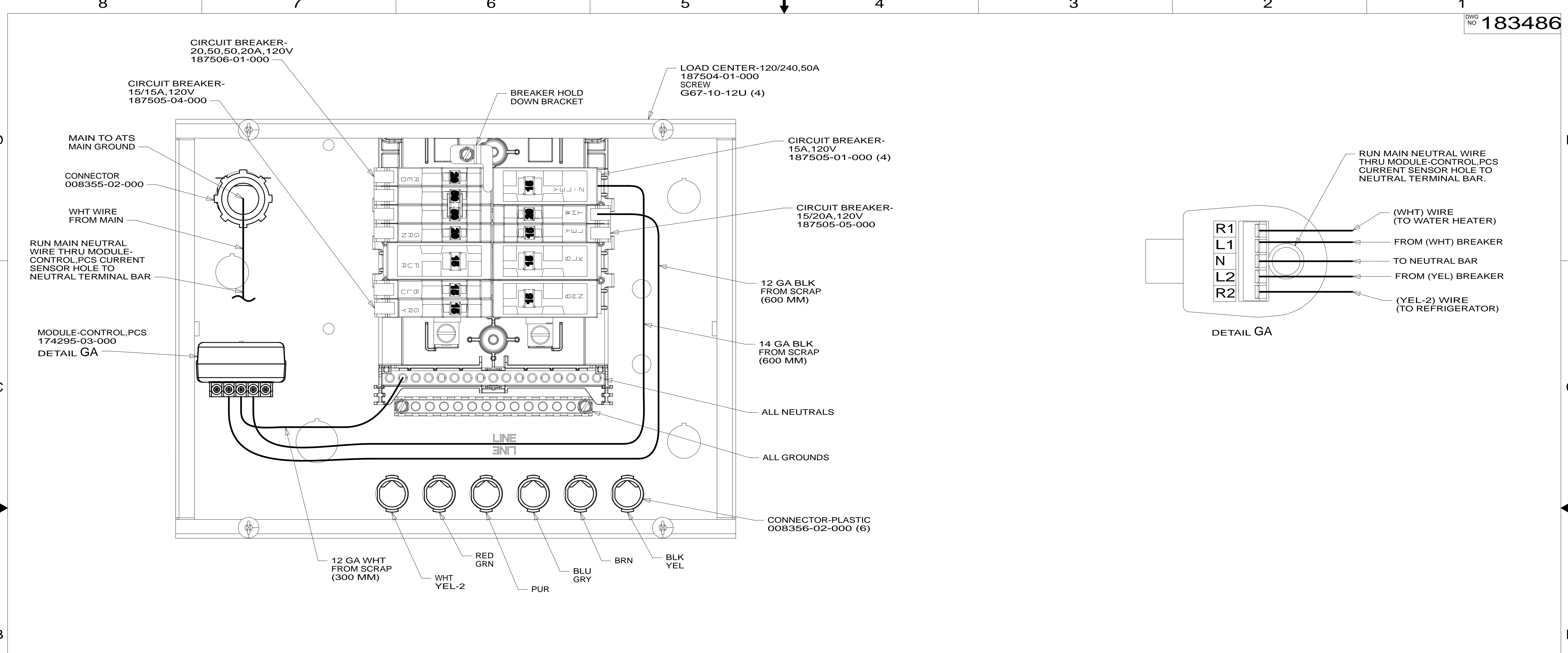
- 53D WTR HTR-6GAL/ELE/LP/MOTORAID
- 53B WTR HTR-6GAL ELECTRIC/LP GAS
- 401 INVERTER-DC/AC, 1000 WATT
- 265 CODES/STANDARDS-CSA/CMVSS
- 1B1 CODES/STANDARDS USA

FIRST USED	
14 E-SERIES	
DO NOT SCALE DRAWING	
TITLE: LOAD CENTER/ATS ASM	
SHEET 6	PART NO 183486 REV

FOR ELECTRICAL TORQUE SPECIFICATIONS SEE DWG NO. 128783-01-000

FOR ELECTRICAL CALLOUTS SEE DWG NO. 121339-01-000

* 183486 * A



- NOTES:**
- 8 INSTALLED BY ASSEMBLY LINE.
 - 7 BLACKEN OUT "WASHER" AND "DRYER" WITH BLACK MARKER.
 - 6. ATTACH WIRES TO BACKSIDE OF LOAD CENTER, USE EXISTING HOLES AND TIE-WIRE 116673-01-000.
 - 5. REMOVE 400MM FROM OUTER JACKET ON ALL WIRES ENTERING LOAD CENTER AND TRIM INDIVIDUAL CONDUCTORS AS REQUIRED TO MAKE INTERNAL CONNECTIONS
 - 4. ALL 110V STRANDED WIRE W/O TERMINALS TO BE STRIPPED 10MM AND SOLDER DIPPED.
 - 3. ALL WIRES TO BE CLAMPED WITHIN 200MM OF ATS.
 - 2. GROUND WIRES ARE NOT SHOWN FOR CLARITY.
 - 1. ALL GROUND WIRES TO BE COVERED WITH TUBING 8041-02-000.

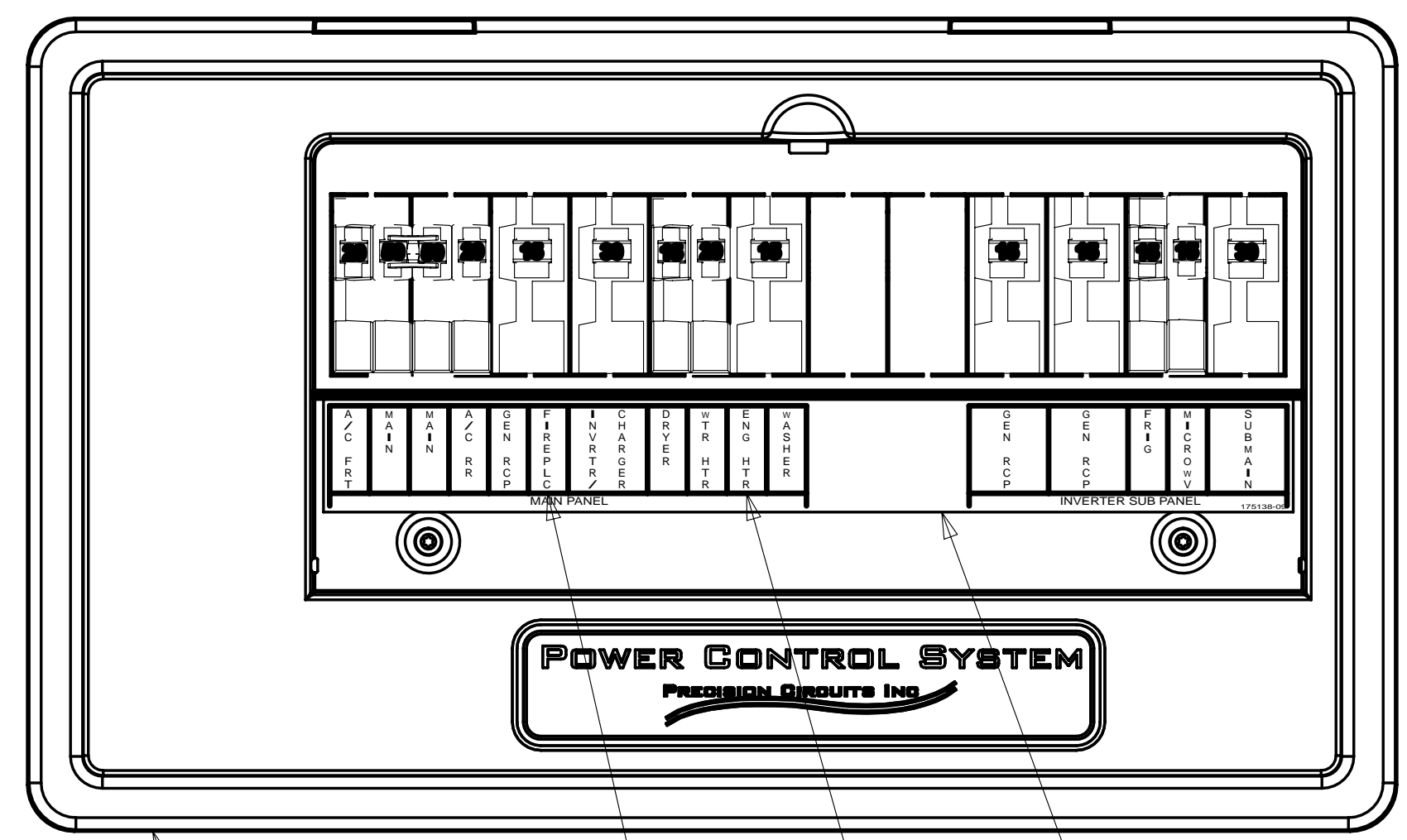
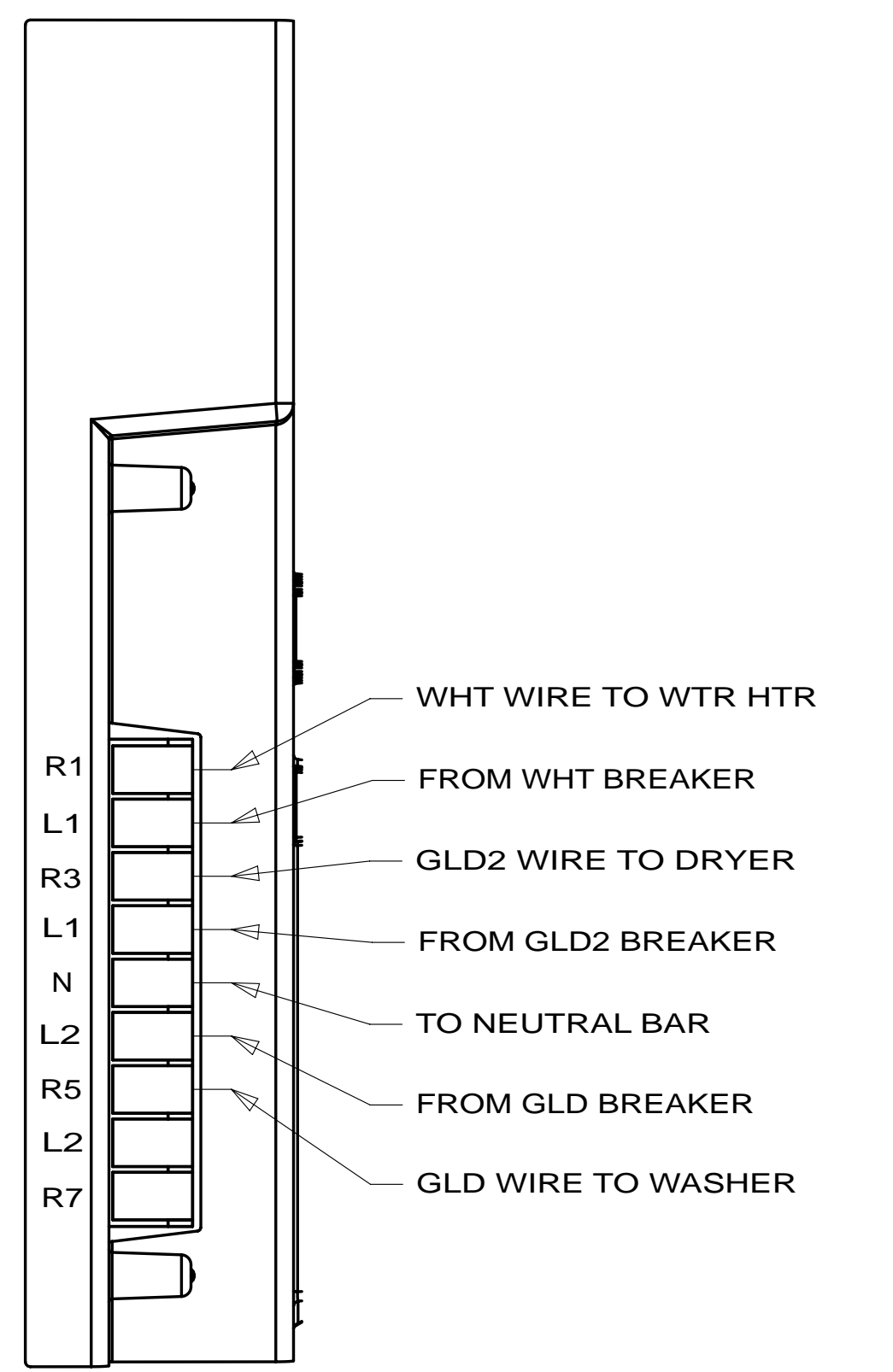
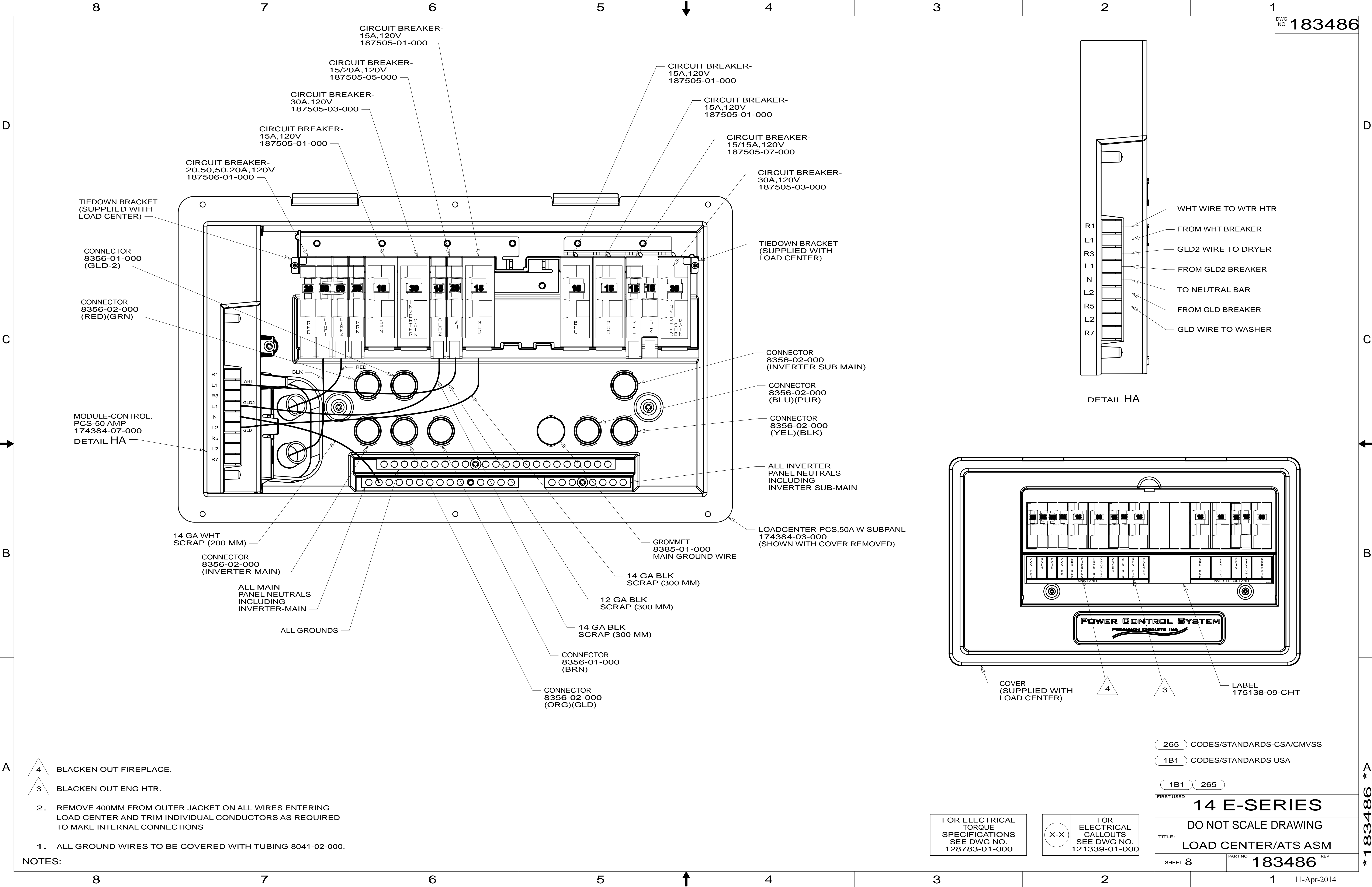
FOR ELECTRICAL TORQUE SPECIFICATIONS SEE DWG NO. 128783-01-000

FOR ELECTRICAL CALLOUTS SEE DWG NO. 121339-01-000

- 53D WTR HTR-6GAL/ELE/LP/MOTORAID
- 29R AC HEAT PUMP-2 HI EFFICIENCY
- 276 A/C ROOF-HI EFF (2) W/EMS
- 78J ELECTRICAL SYSTEM-50 AMP
- 265 CODES/STANDARDS-CSA/CMVSS
- 1B1 CODES/STANDARDS USA

FIRST USED	
14 E-SERIES	
DO NOT SCALE DRAWING	
TITLE: LOAD CENTER/ATS ASM	
SHEET 7	PART NO. 183486 REV

* 183486 * A



- 4 BLACKEN OUT FIREPLACE.
- 3 BLACKEN OUT ENG HTR.

2. REMOVE 400MM FROM OUTER JACKET ON ALL WIRES ENTERING LOAD CENTER AND TRIM INDIVIDUAL CONDUCTORS AS REQUIRED TO MAKE INTERNAL CONNECTIONS
1. ALL GROUND WIRES TO BE COVERED WITH TUBING 8041-02-000.

NOTES:

265 CODES/STANDARDS-CSA/CMVSS
1B1 CODES/STANDARDS USA

1B1 265

FIRST USED
14 E-SERIES

DO NOT SCALE DRAWING

TITLE:
LOAD CENTER/ATS ASM

SHEET 8 PART NO **183486** REV

FOR ELECTRICAL TORQUE SPECIFICATIONS SEE DWG NO. 128783-01-000

FOR ELECTRICAL CALLOUTS SEE DWG NO. 121339-01-000

* 183486 *