



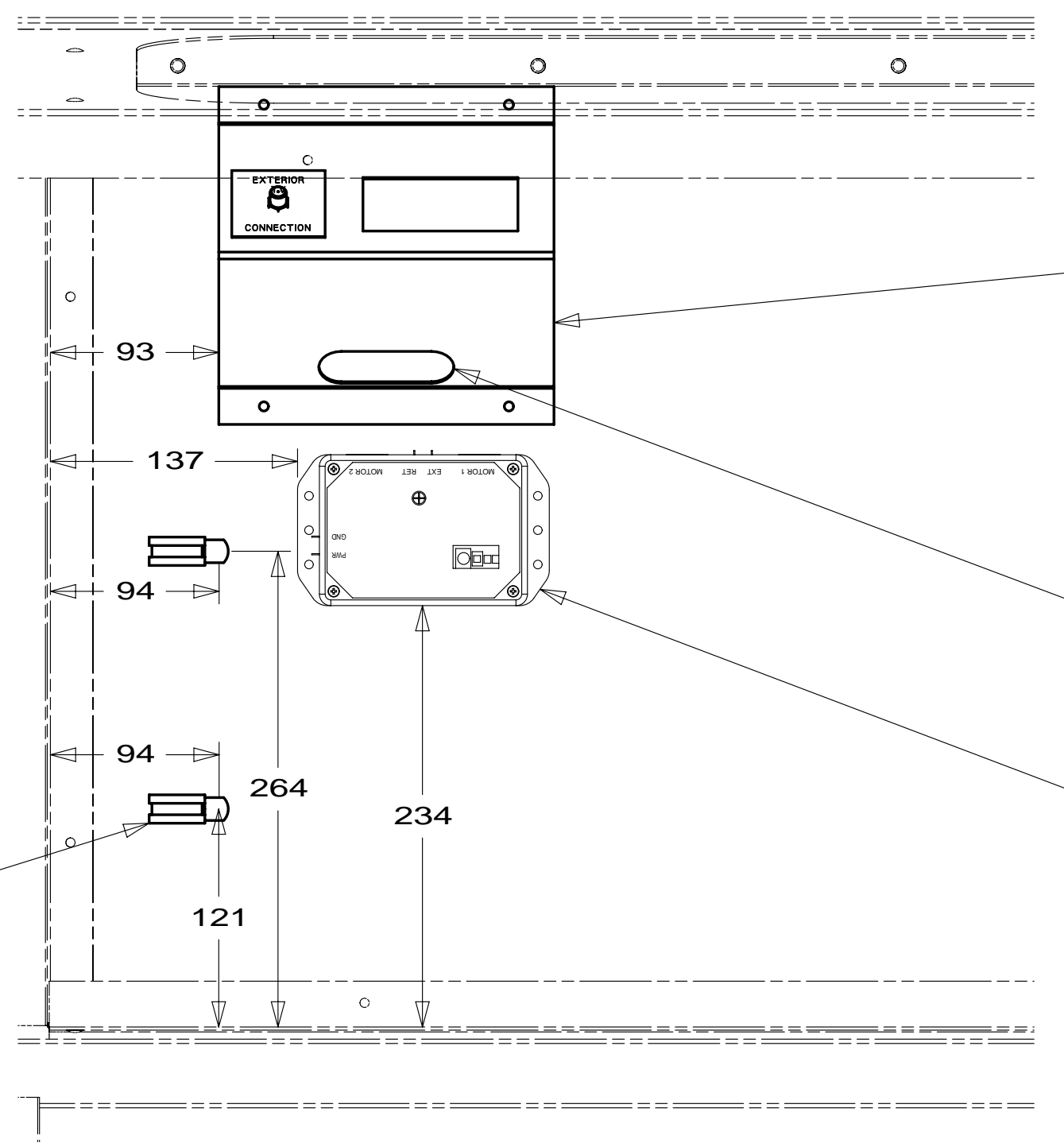
DANGER

Danger of electrical shock, burns or death. Always remove all power sources before attempting any repair, service or diagnostic work. Power can be present from shore power, generator, inverter or battery. All power sources must be disabled and secured before performing any service.



CAUTION

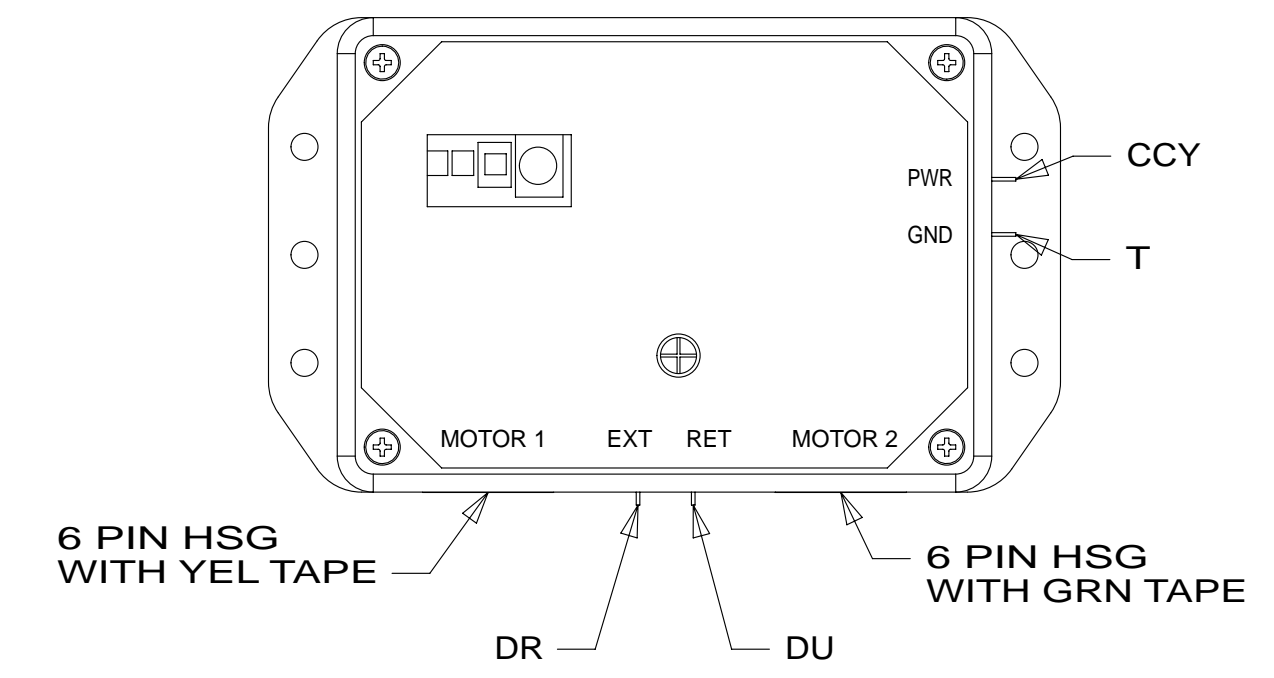
If you lack the skills, tools or equipment to perform diagnostic or repair work leave such work to an authorized Winnebago Industries dealer or other qualified shop.



PANEL-RCP
 151376-02-CHT
 ADAPTER
 082134-01-000
 NUT
 82136-01-000
 LABEL
 157486-01-CHT
 SCREW
 G67-10-12U (4)

SEAL-TRIM,EDGE
 115870-01-000
 (180 MM)

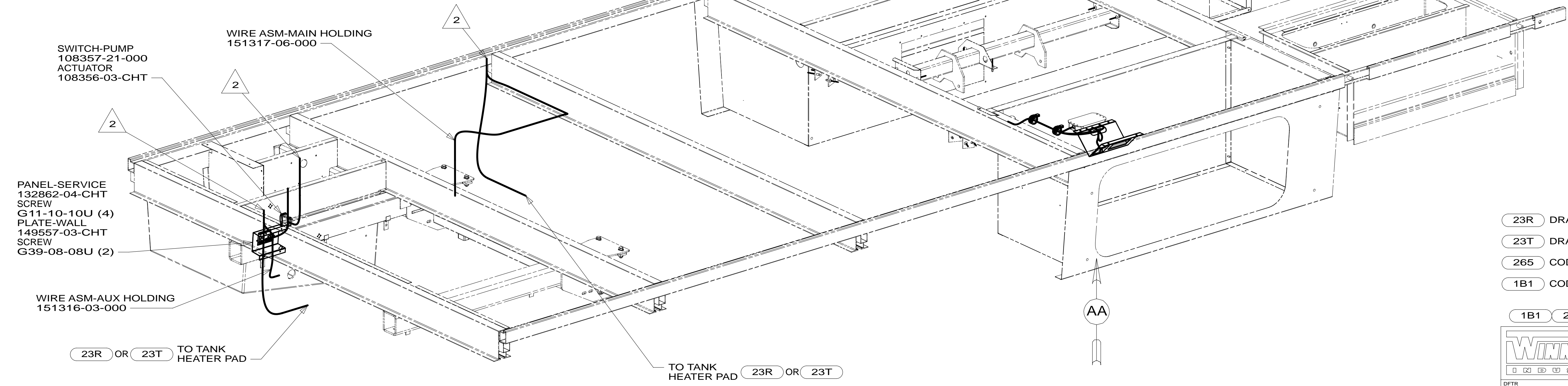
CONTROL-SLIDEOUT,IN-WALL
 178451-01-000
 SCREW
 G39-08-12U (4)
 DETAIL AB



VIEW AB

SWITCH-LP VALVE
 108357-01-000
 ACTUATOR-SWITCH
 108356-01-CHT

VIEW AA



SWITCH-PUMP
 108357-21-000
 ACTUATOR
 108356-03-CHT

WIRE ASM-MAIN HOLDING
 151317-06-000

PANEL-SERVICE
 132862-04-CHT
 SCREW
 G11-10-10U (4)
 PLATE-WALL
 149557-03-CHT
 SCREW
 G39-08-08U (2)

WIRE ASM-AUX HOLDING
 151316-03-000

23R OR 23T TO TANK HEATER PAD

TO TANK HEATER PAD 23R OR 23T

- 23R DRAINAGE SYSTEM/HEAT-PREWIRE
- 23T DRAINAGE SYSTEM-HEATED
- 265 CODES/STANDARDS-CSA/CMVSS
- 1B1 CODES/STANDARDS USA

2 WIRE ROUTED THROUGH FLOOR IN THIS AREA.

1. ROUTE TANK SENSOR WIRES SO THEY DO NOT PASS OVER SENSORS. USE WIRE TIE MOUNT 155366-01-000 AS NEEDED. TANK SURFACE MUST BE CLEANED USING ISOPROPYL ALCOHOL AND PRIME WITH PRIMER 94.

NOTES:

FOR ELECTRICAL TORQUE SPECIFICATIONS SEE DWG NO. 128783-01-000

FOR ELECTRICAL CALLOUTS SEE DWG NO. 121339-01-000

WINNEBAGO COPYRIGHT 2014 WINNEBAGO INDUSTRIES, INC.

ALL DIMENSIONS ARE IN MILLIMETERS

14 H25P

UNSPECIFIED TOLERANCES ARE:
 WHOLE DIM (X) : 3
 ONE-PLACE (X.X) : 1.5
 TWO-PLACE (X.XX) : 0.50
 ANGLE : 1°

THIRD ANGLE PROJECTION

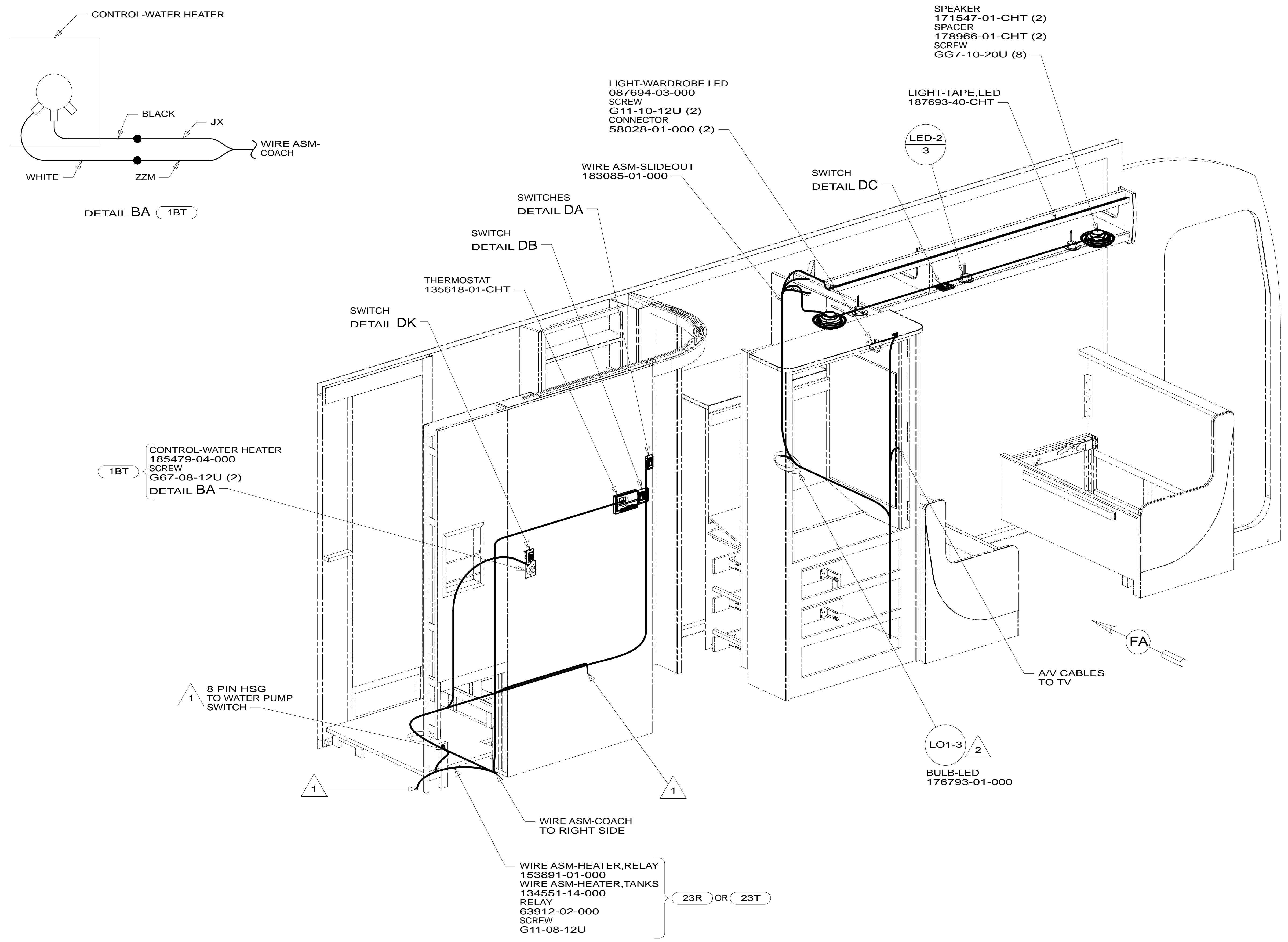
DO NOT SCALE DRAWING REFER TO ES0018 FOR FASTENER TIGHTENING GUIDELINES

TITLE: **WIRING INSTL-BODY,12V**

SHEET 1 OF 6 PART NO. 182687 REV

REF: 1 02-Apr-2014

* 182687 * A



1BT CONTROL-WATER HEATER
185479-04-000
SCREW
G67-08-12U (2)
DETAIL BA

LIGHT-WARDROBE LED
087694-03-000
SCREW
G11-10-12U (2)
CONNECTOR
58028-01-000 (2)

SPEAKER
171547-01-CHT (2)
SPACER
178966-01-CHT (2)
SCREW
GG7-10-20U (8)

LIGHT-TAPE,LED
187693-40-CHT

LED-2
3

WIRE ASM-SLIDEOUT
183085-01-000

SWITCH
DETAIL DC

SWITCHES
DETAIL DA

SWITCH
DETAIL DB

THERMOSTAT
135618-01-CHT

SWITCH
DETAIL DK

1BT

1 8 PIN HSG
TO WATER PUMP
SWITCH

FA

A/V CABLES
TO TV

LO1-3
2

BULB-LED
176793-01-000

WIRE ASM-COACH
TO RIGHT SIDE

WIRE ASM-HEATER,RELAY
153891-01-000
WIRE ASM-HEATER,TANKS
134551-14-000
RELAY
63912-02-000
SCREW
G11-08-12U

23R OR 23T

- 1BT WATER HEATER, TANKLESS
- 23T DRAINAGE SYSTEM-HEATED
- 23R DRAINAGE SYSTEM/HEAT-PREWIRE
- 265 CODES/STANDARDS-CSA/CMVSS
- 1B1 CODES/STANDARDS USA

1B1 265

FIRST USED	
14 H25P	
DO NOT SCALE DRAWING	
TITLE: WIRING INSTL-BODY,12V	
SHEET 2	PART NO 182687 REV

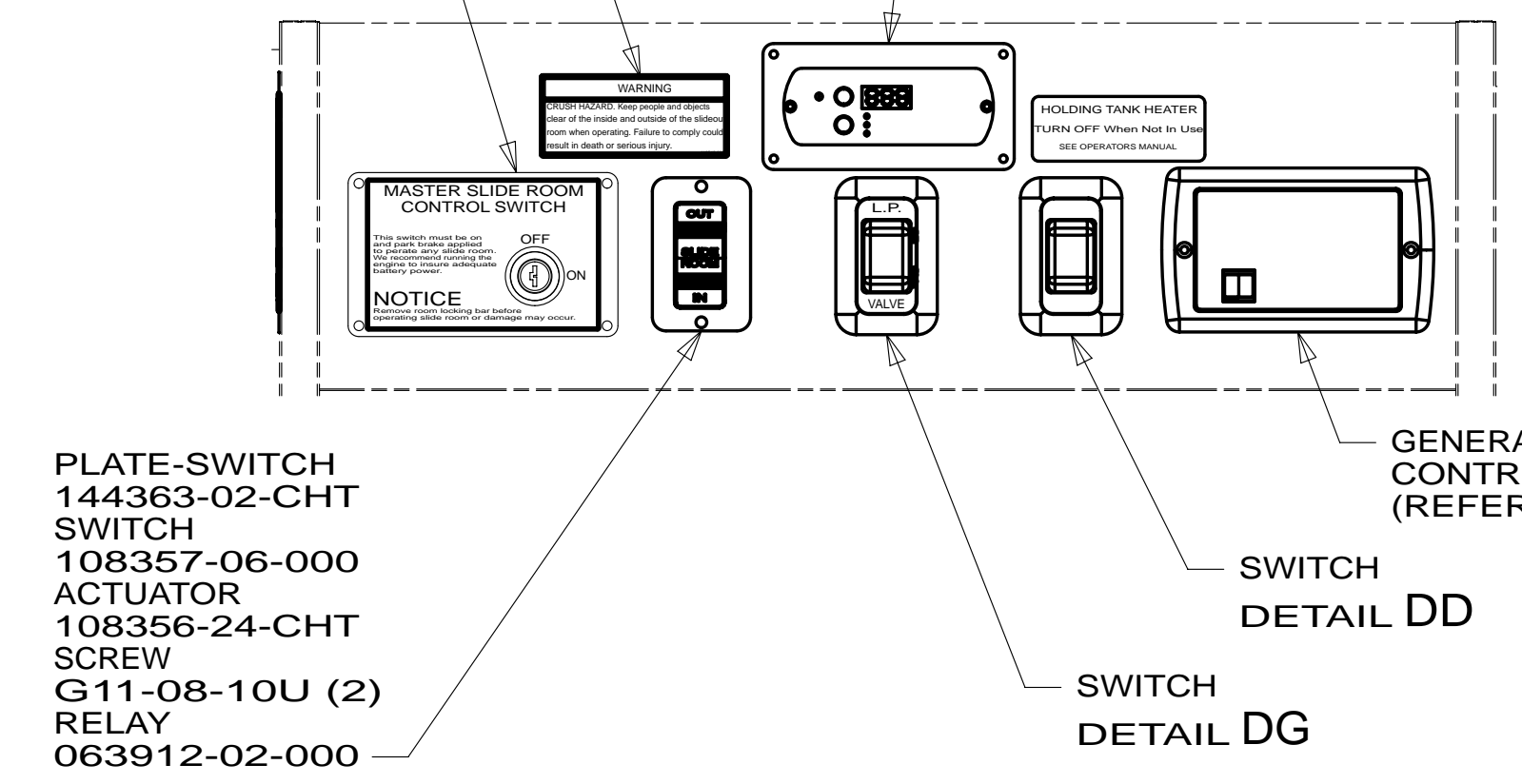
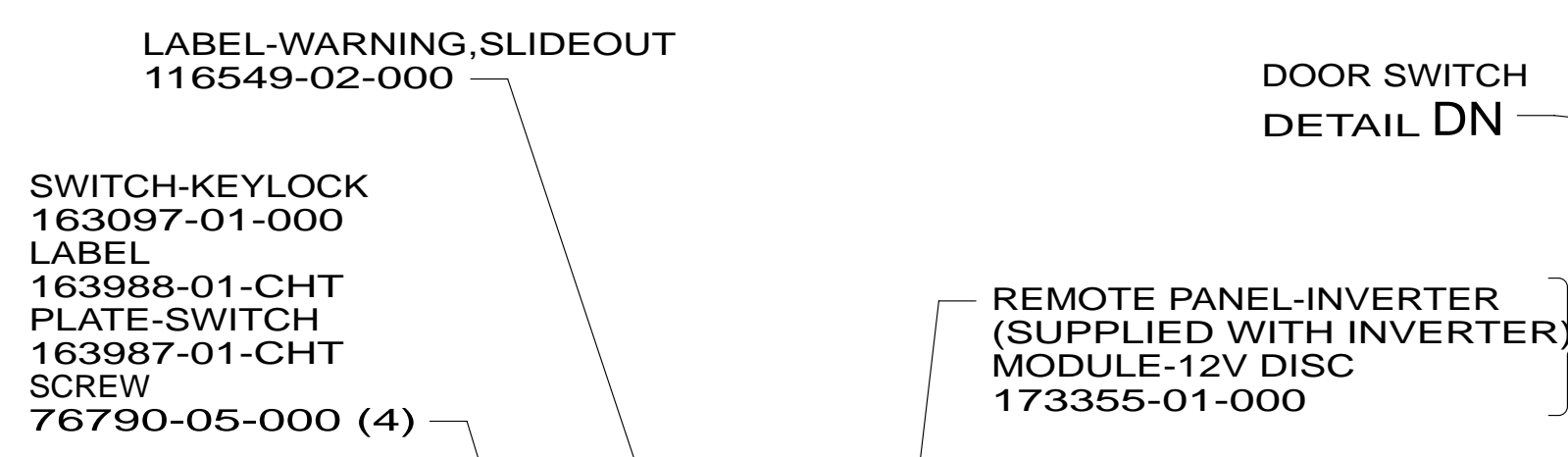
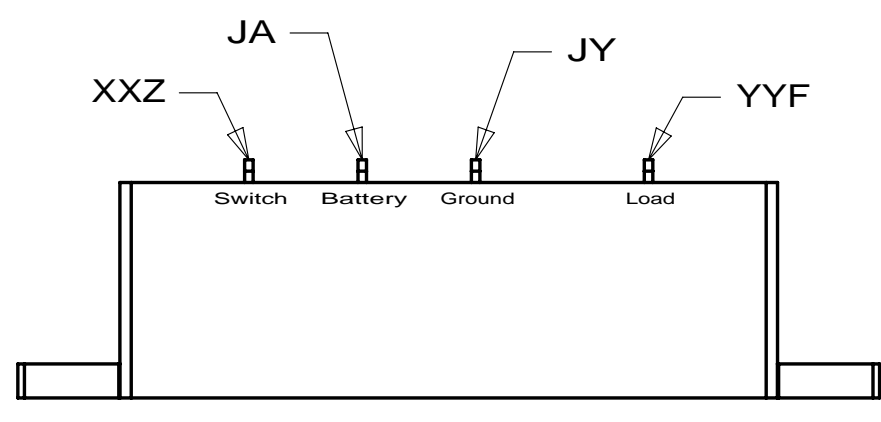
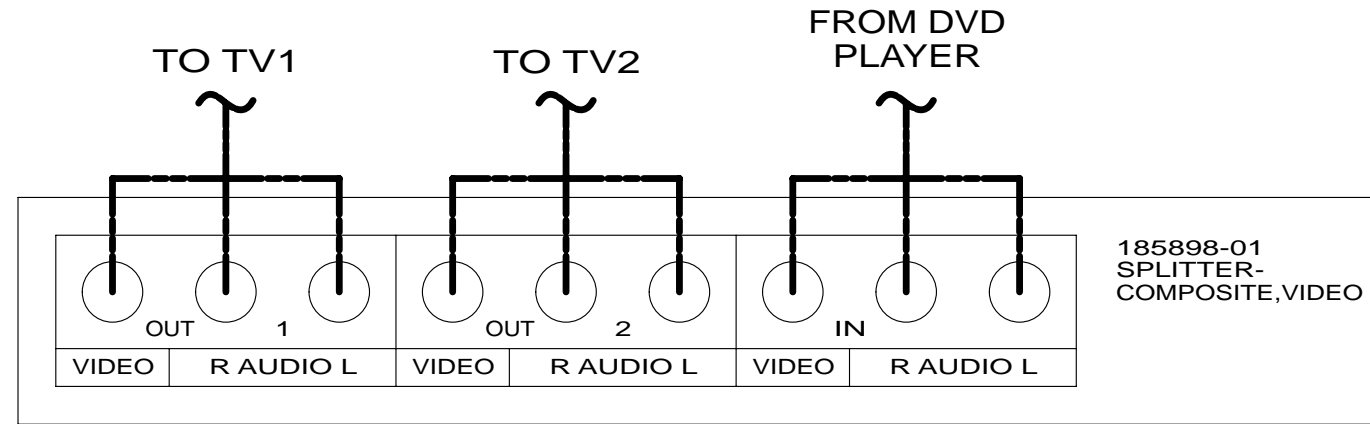
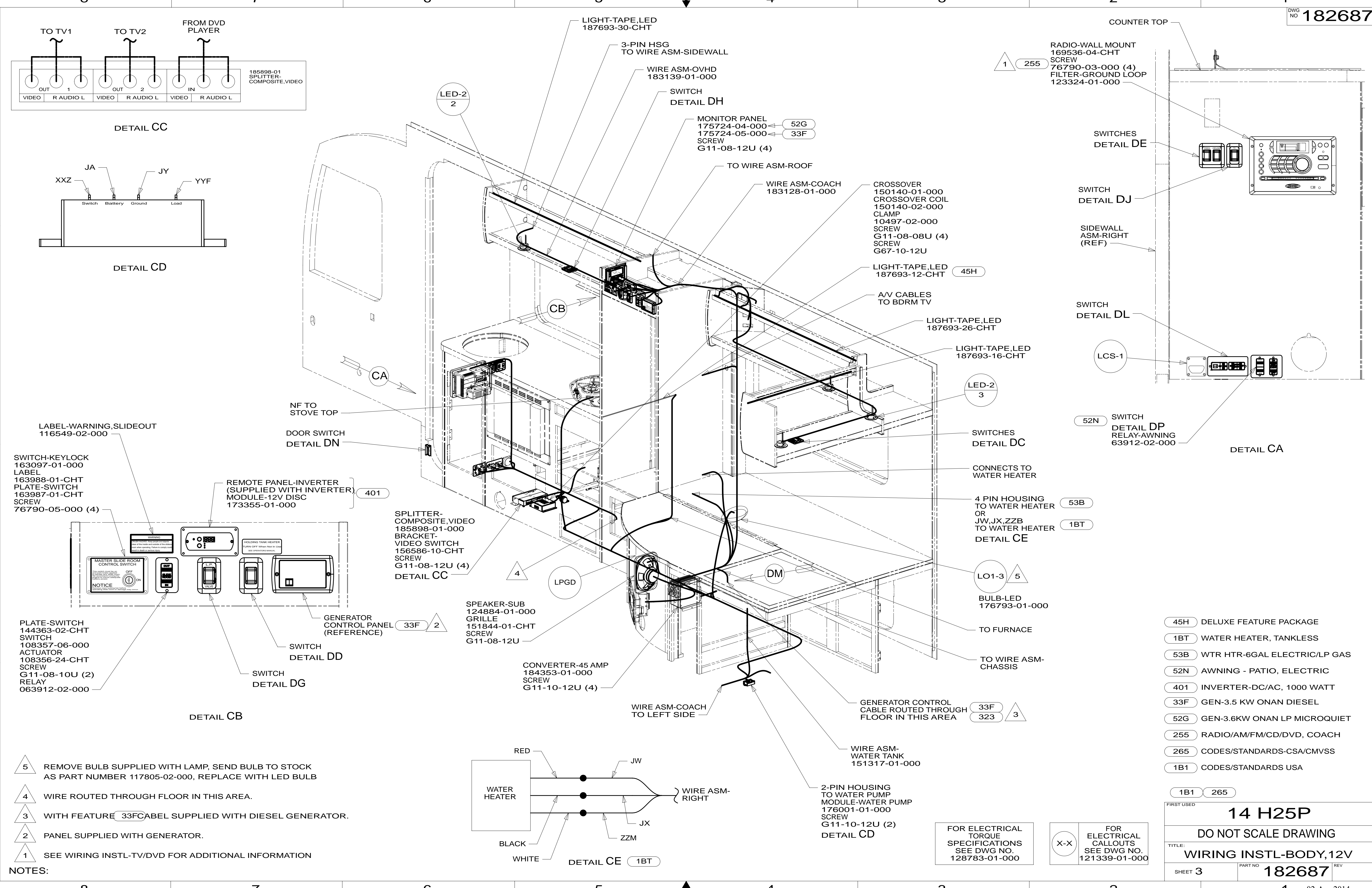
FOR ELECTRICAL
TORQUE
SPECIFICATIONS
SEE DWG NO.
128783-01-000

FOR
ELECTRICAL
CALLOUTS
SEE DWG NO.
121339-01-000

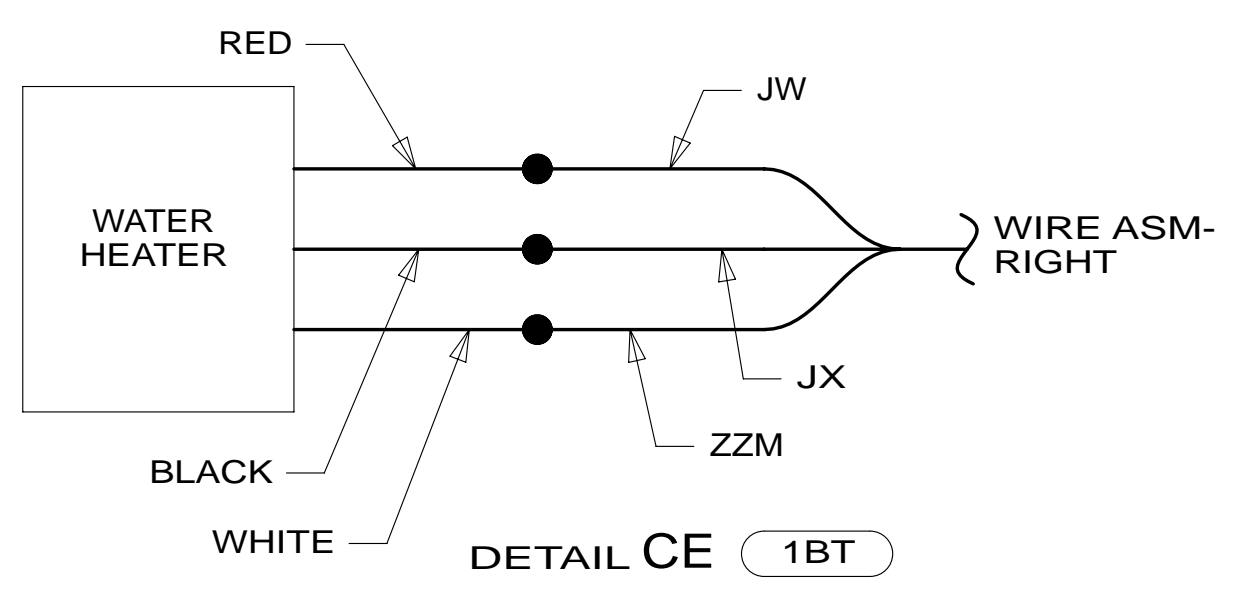
- 2 REMOVE BULB SUPPLIED WITH LAMP, END BULB TO STOCK AS PART NUMBER 117805-02-000, REPLACE WITH LED BULB.
- 1 WIRE ROUTED THROUGH FLOOR IN THIS AREA.

NOTES:

* 182687



- NOTES:
- 5 REMOVE BULB SUPPLIED WITH LAMP, SEND BULB TO STOCK AS PART NUMBER 117805-02-000, REPLACE WITH LED BULB
 - 4 WIRE ROUTED THROUGH FLOOR IN THIS AREA.
 - 3 WITH FEATURE 33FC LABEL SUPPLIED WITH DIESEL GENERATOR.
 - 2 PANEL SUPPLIED WITH GENERATOR.
 - 1 SEE WIRING INSTL-TV/DVD FOR ADDITIONAL INFORMATION



FOR ELECTRICAL TORQUE SPECIFICATIONS SEE DWG NO. 128783-01-000

FOR ELECTRICAL CALLOUTS SEE DWG NO. 121339-01-000

- 45H DELUXE FEATURE PACKAGE
- 1BT WATER HEATER, TANKLESS
- 53B WTR HTR-6GAL ELECTRIC/LP GAS
- 52N AWNING - PATIO, ELECTRIC
- 401 INVERTER-DC/AC, 1000 WATT
- 33F GEN-3.5 KW ONAN DIESEL
- 52G GEN-3.6KW ONAN LP MICROQUIET
- 255 RADIO/AM/FM/CD/DVD, COACH
- 265 CODES/STANDARDS-CSA/CMVSS
- 1B1 CODES/STANDARDS USA

FIRST USED

14 H25P

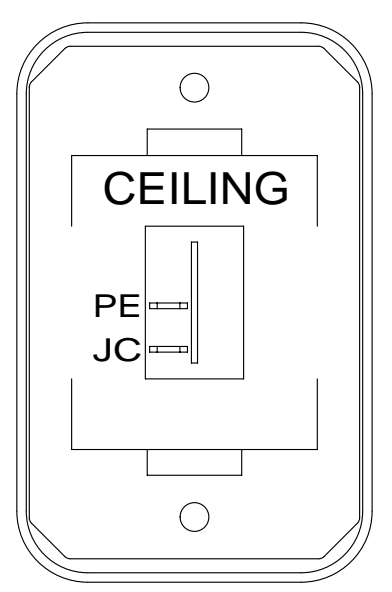
DO NOT SCALE DRAWING

TITLE: **WIRING INSTL-BODY,12V**

SHEET 3 PART NO **182687** REV

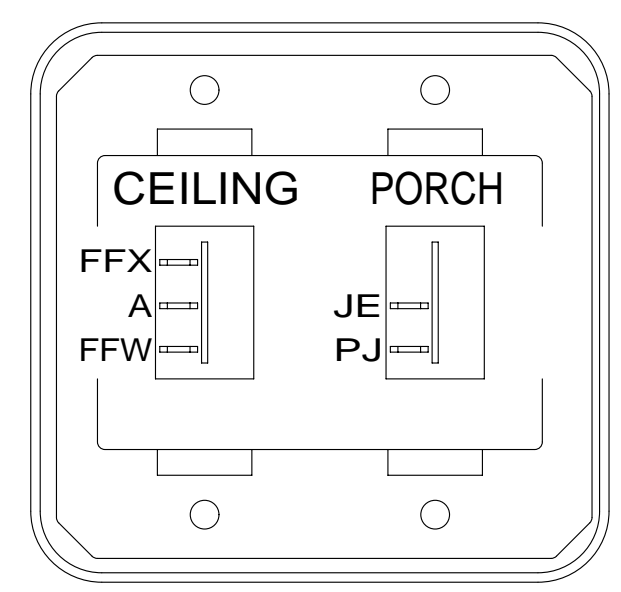
02-Apr-2014

* 182687 * A



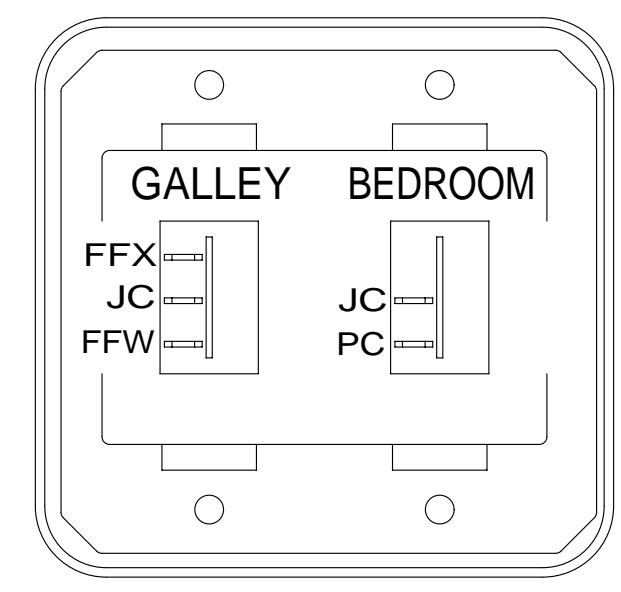
SWITCH-ROCKER
135740-01-CHT
SWITCH-BASE
135741-01-CHT
SWITCH-BEZEL
135742-07-CHT
SCREW
G11-08-08U (2)

DETAIL DA



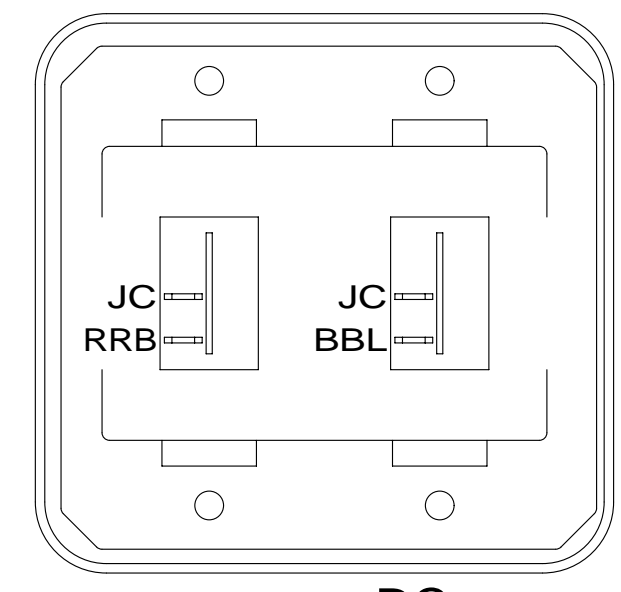
SWITCH-ROCKER
135740-01-CHT
135740-02-CHT
SWITCH-BASE
135741-02-CHT
SWITCH-BEZEL
135742-19-CHT
SCREW
G11-08-08U (4)

DETAIL DE



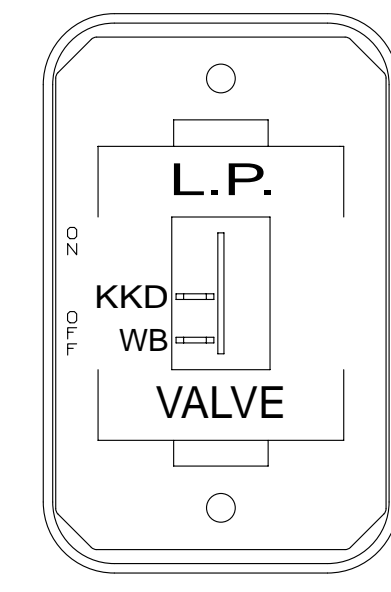
SWITCH-ROCKER
135740-01-CHT
135740-02-CHT
SWITCH-BASE
135741-02-CHT
SWITCH-BEZEL
135742-54-CHT
SCREW
G11-08-08U (4)

DETAIL DB



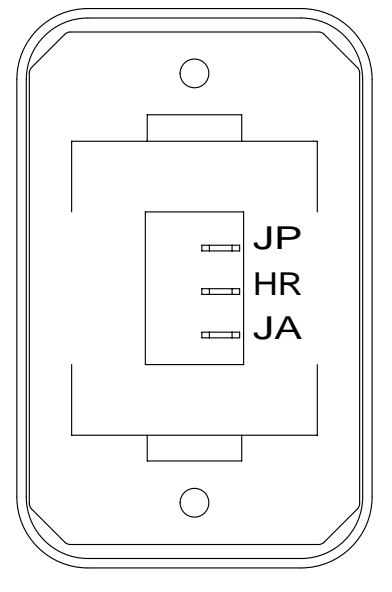
SWITCH-ROCKER
135740-01-CHT (2)
SWITCH-BASE
135741-02-CHT
SWITCH-BEZEL
135742-02-CHT
SCREW
G11-08-08U (4)

DETAIL DC (2 PLACES)



SWITCH-ROCKER
135740-01-CHT
SWITCH-BASE
135741-01-CHT
SWITCH-BEZEL
135742-59-CHT
SCREW
G11-08-08U (2)

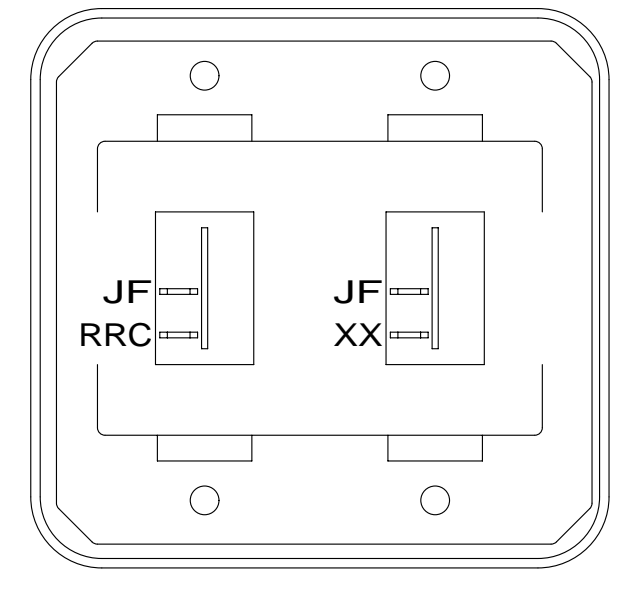
DETAIL DG



SWITCH-BLANK
138253-01-CHT
SWITCH-ROCKER
135740-06-CHT
SWITCH-BASE
135741-01-CHT
SWITCH-BEZEL
135742-01-CHT
SCREW
G11-08-08U (2)
LABEL-SWITCH
134563-01-CHT

DETAIL DD

HOLDING TANK HEATER
TURN OFF When Not In Use
SEE OPERATORS MANUAL



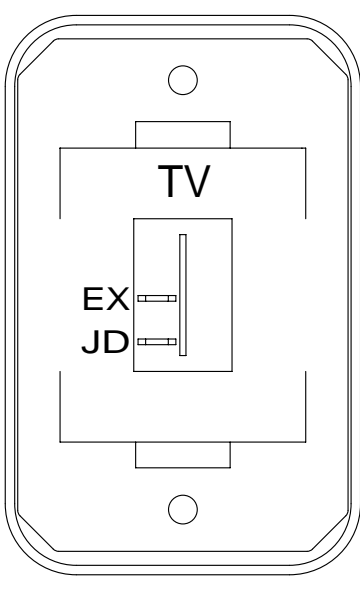
SWITCH-ROCKER
135740-01-CHT (2)
SWITCH-BASE
135741-02-CHT
SWITCH-BEZEL
135742-02-CHT
SCREW
G11-08-08U (4)

DETAIL DH



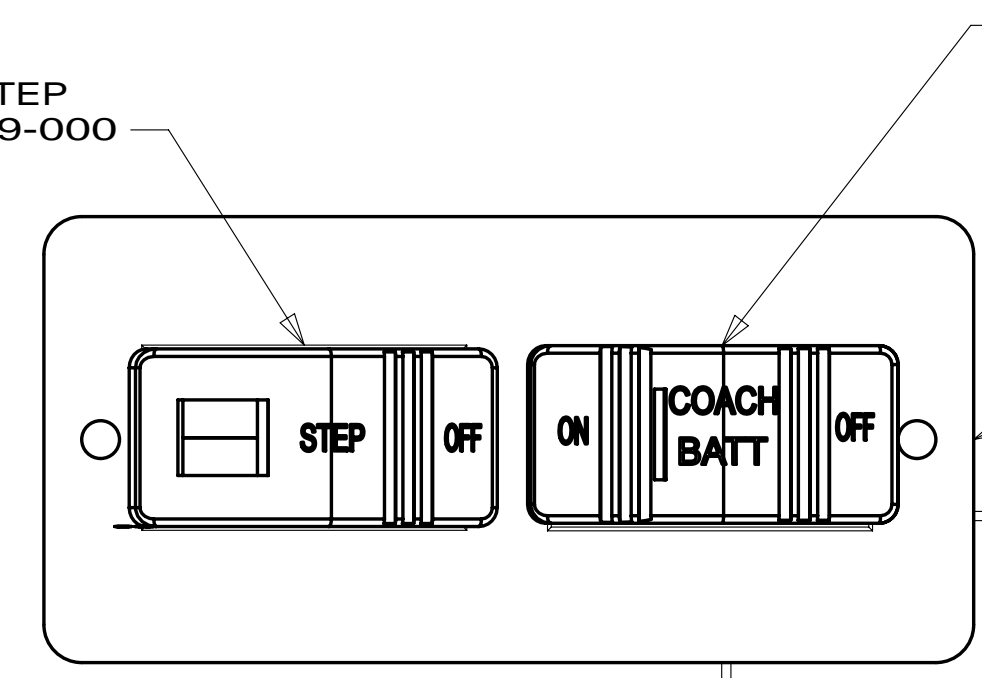
ROUTE WIRES THRU HOLE
GROMMET
8386-01-000
SWITCH/MAGNET-STEP, ELECTRIC
116995-03-000
SCREW
G11-06-08U (4)

DETAIL DN



SWITCH-ROCKER
135740-01-CHT
SWITCH-BASE
135741-01-CHT
SWITCH-BEZEL
135742-45-CHT
SCREW
G11-08-08U (2)

DETAIL DJ 1LK

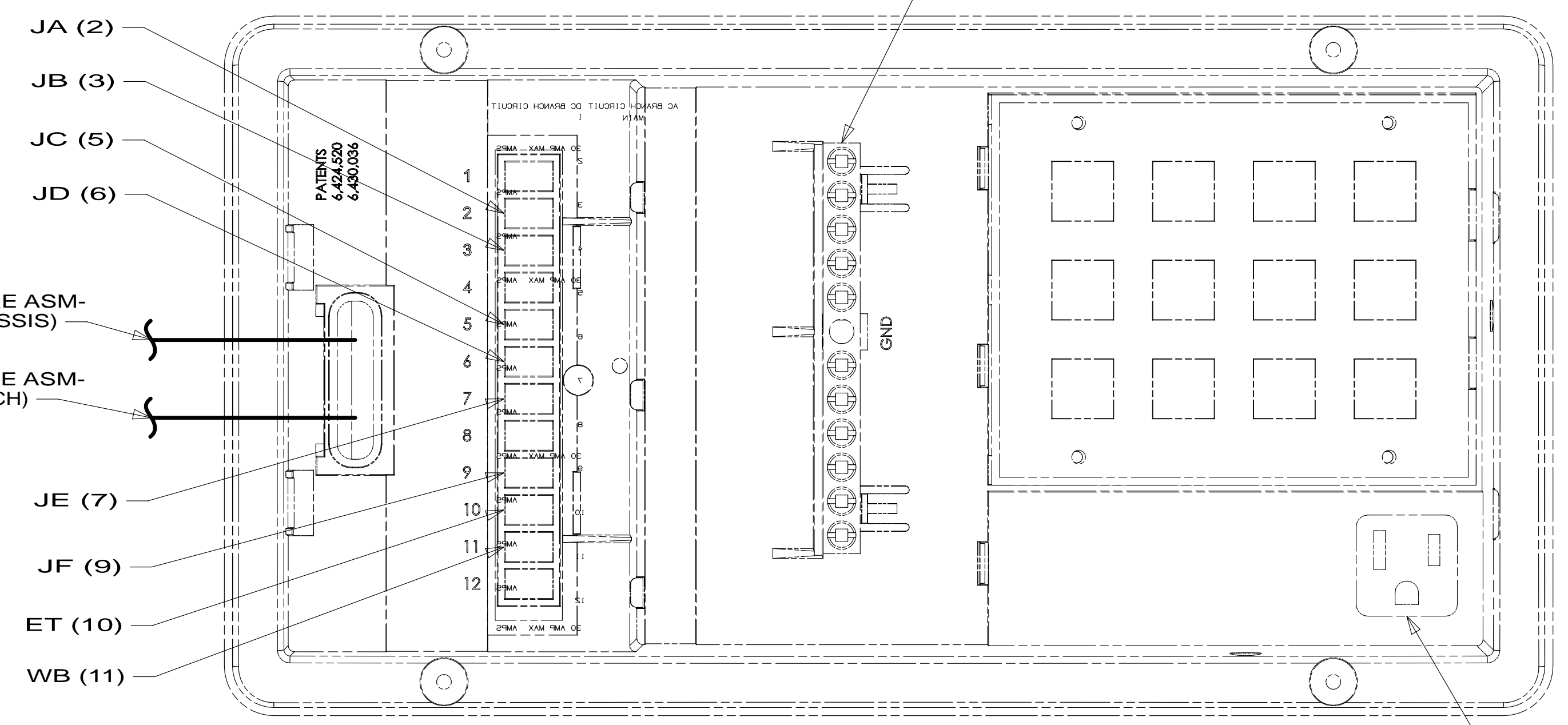


SWITCH-STEP
108357-19-000

SWITCH-BATT DISC
108357-18-000
ACTUATOR-BATT DISC
108356-19-CHT
WIRE ASM-THERMISTOR
186796-01-000

PLATE-SWITCH
164352-06-CHT
SCREW
G11-06-10U (4)

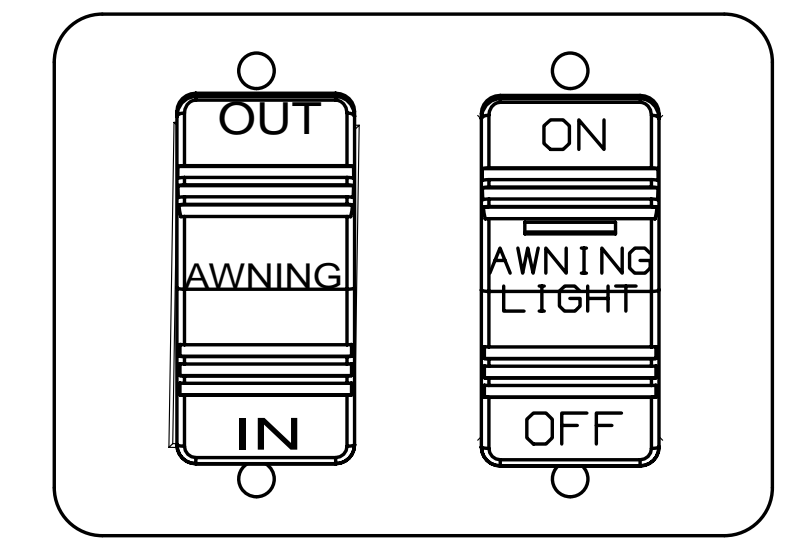
DETAIL DL



GROUNDS
JX,EU,UK,FFE,JP,JM,
NF,PM,JY,NE,NC,ND

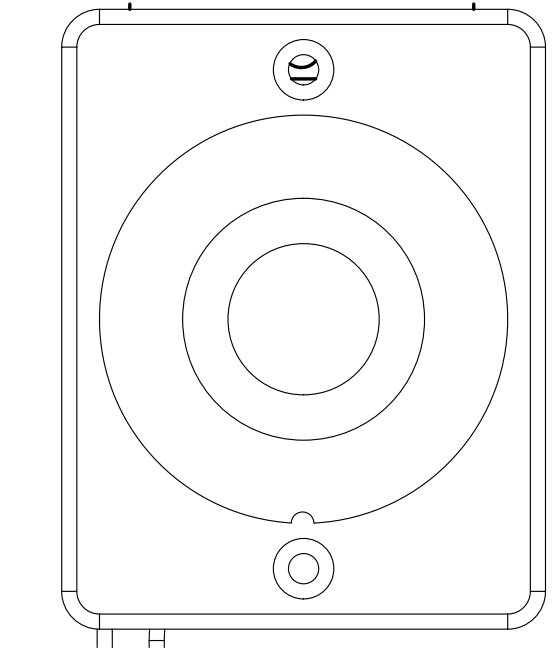
VIEW DM

PLUG CONVERTER INTO OUTLET



SWITCH-AWNING
108357-06-000
ACTUATOR-AWNING
108357-12-CHT
SWITCH-AWNING LIGHT
108357-14-000
ACTUATOR
108356-28-CHT
PLATE
158431-17-CHT
SCREW
G11-06-10U (4)

DETAIL DP 52N



SWITCH-WATER PUMP
108357-21-000
ACTUATOR
108356-23-CHT
PLATE
144363-02-CHT
SCREW
G11-06-10U (2)

DETAIL DK

- NOTES:
- 3 MOUNT SWITCH AND SPACER TO BLOCK ON JAMB. ADJUST HEIGHT TO MATCH MAGNET.
 - 2 MOUNT MAGNET USING PILOT HOLES IN SCREEN DOOR FRAME. MOUNT WITH MAGNET TOWARD SWITCH.
 - 1 WITHOUT 23T OR 23R

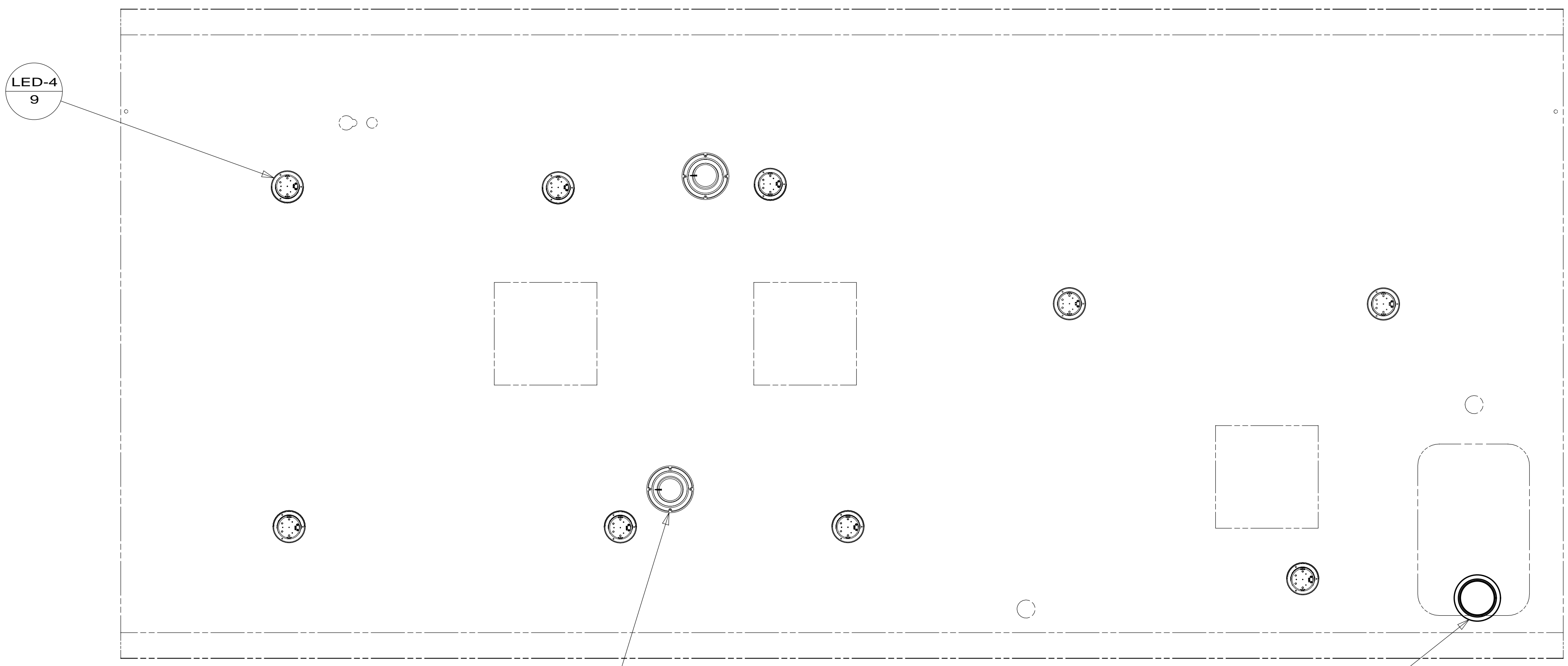
FOR ELECTRICAL TORQUE SPECIFICATIONS SEE DWG NO. 128783-01-000

FOR ELECTRICAL CALLOUTS SEE DWG NO. 121339-01-000

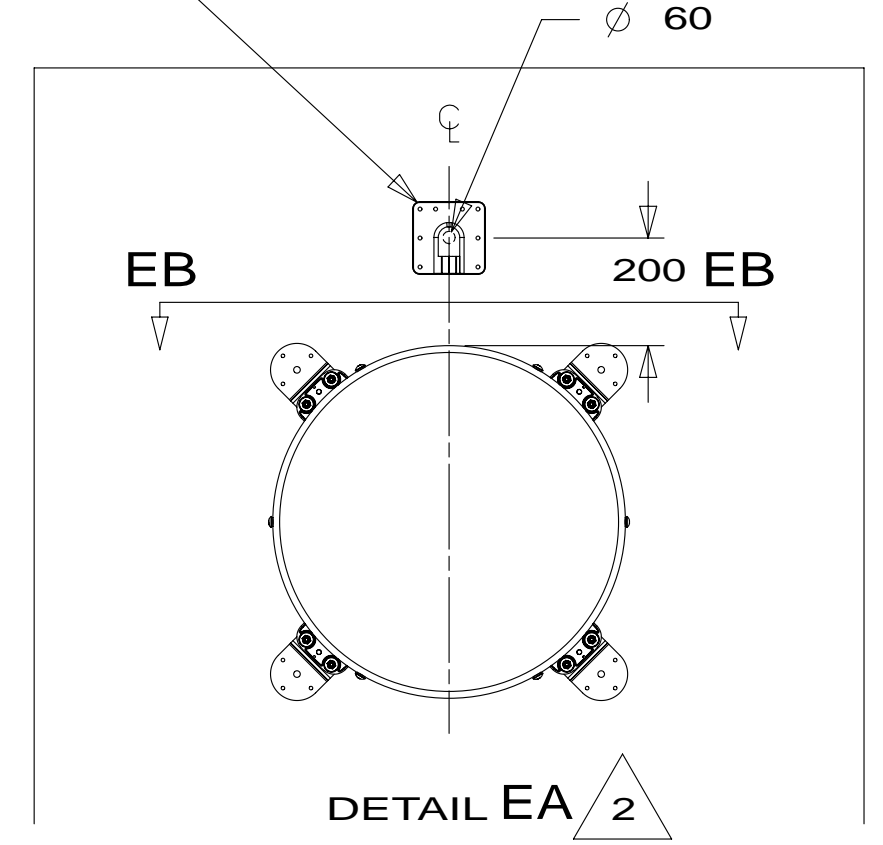
- 23R DRAINAGE SYSTEM/HEAT-PREWIRE
- 52N AWNING - PATIO, ELECTRIC
- 23T DRAINAGE SYSTEM-HEATED
- 1LK TV-20"DC,COLOR,LCD W/REMOTE
- 265 CODES/STANDARDS-CSA/CMVSS
- 1B1 CODES/STANDARDS USA

FIRST USED		14 H25P	
DO NOT SCALE DRAWING			
TITLE: WIRING INSTL-BODY,12V			
SHEET 4	PART NO 182687	REV	

* 182687



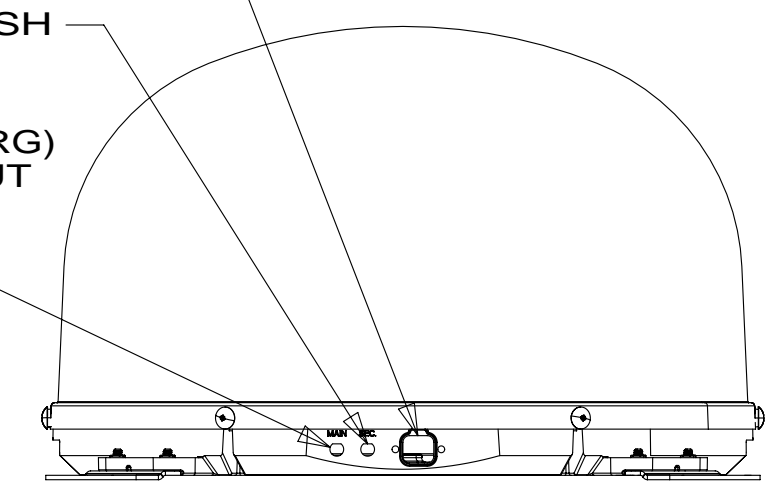
THE SATELLITE DISH WIRE CONNECTIONS ARE TO BE PLACED ON THE CENTERLINE OF THE MOTORHOME FACING FORWARD



CONNECT 2-PIN HOUSING FROM ROOF ASM TO SATELLITE DISH HERE AND ADD CONVOLUTED TUBING

CONNECT CABLE ASM COAX (ORG-2) FROM ROOF ASM TO SEC INPUT ON SATELLITE DISH

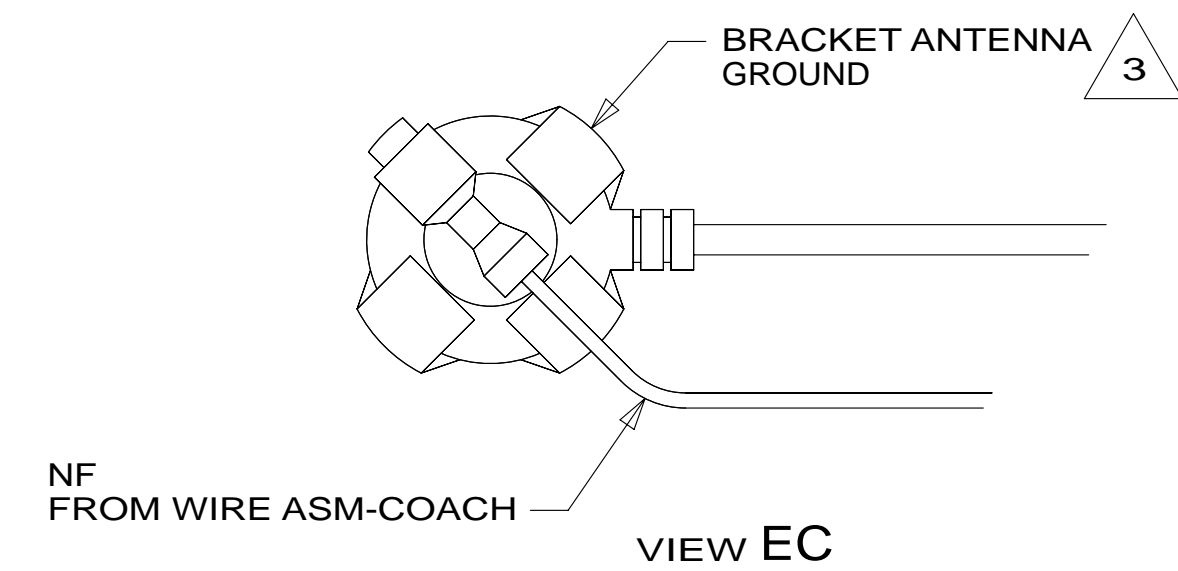
CONNECT CABLE ASM COAX (ORG) FROM ROOF ASM TO MAIN INPUT ON SATELLITE DISH



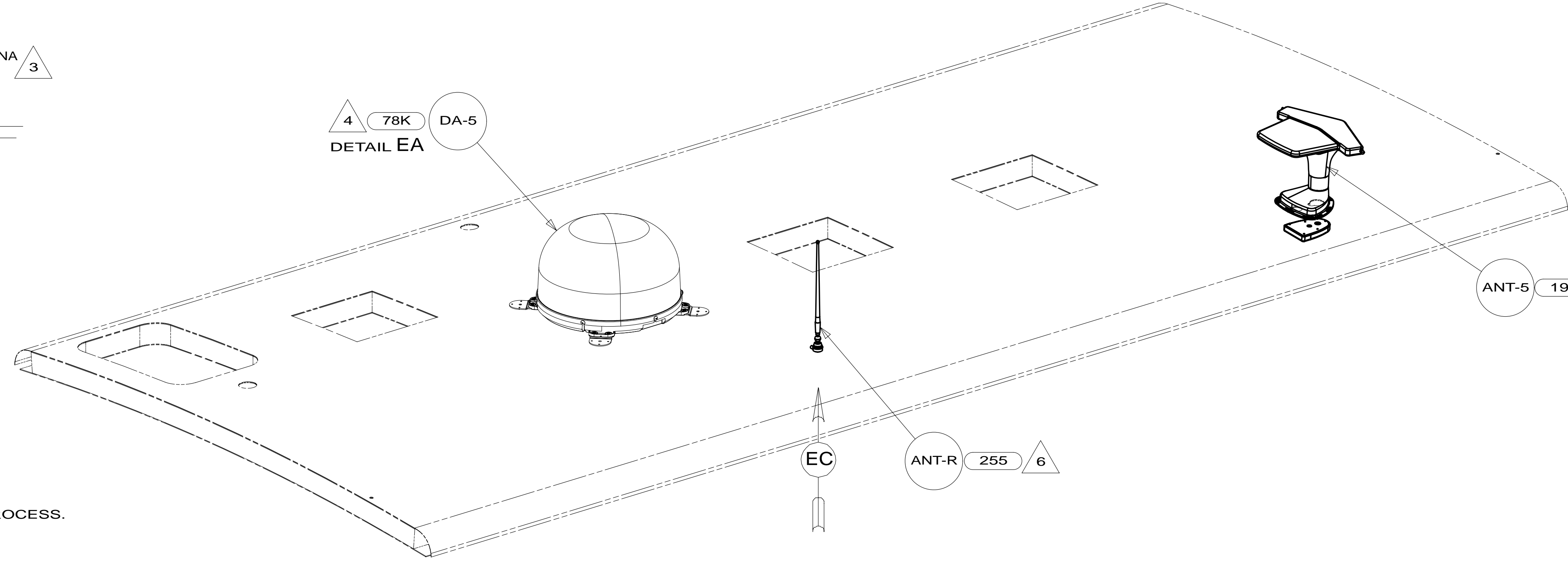
SPEAKER 179783-01-CHT (2)
SCREW OG1208-12-170 (8)

LSH-3

VIEW EB-EB



4 78K DA-5
DETAIL EA



ANT-5 193 2

ANT-R 255 6

EC

- 6 REMOVE GROUND WIRE FROM ANTENNA BASE.
- 5 SENSOR SUPPLIED WITH SATELLITE ASSEMBLY.
- 4 INSTALL AS SPECIFIED IN THE INSTALLATION PROCESS.
- 3 WRAP BRACKET LEGS AROUND ANTENNA BASE.
- 2 SEE ANTENNA INSTALLATION MANUAL FOR CORRECT INSTALLATION PROCEDURE.

1. SEE ROOF ASM FOR ADDITIONAL INFORMATION.

NOTES:

- 78K SATELLITE TV SYSTEM AUTO
- 193 TV ANTENNA-AMPLIFIED SYSTEM
- 255 RADIO/AM/FM/CD/DVD, COACH
- 265 CODES/STANDARDS-CSA/CMVSS
- 1B1 CODES/STANDARDS USA

1B1 265

FIRST USED	14 H25P	
DO NOT SCALE DRAWING		
TITLE: WIRING INSTL-BODY, 12V		
SHEET 5	PART NO 182687	REV

FOR ELECTRICAL TORQUE SPECIFICATIONS SEE DWG NO. 128783-01-000

X-X FOR ELECTRICAL SPECIFICATIONS SEE DWG NO. 121339-01-000

* 182687 * A

6 PIN HSG TO SLIDEOUT MOTOR WITH YELLOW TAPE

6 PIN HSG TO SLIDEOUT MOTOR WITH GREEN TAPE

WIRE ROUTED BEHIND TRIM PIECE IN THIS AREA

WIRE ROUTED BEHIND TRIM PIECE IN THIS AREA

WIRE PASSES THROUGH FLOOR TO SLIDEOUT CONTROL (WIRE ASM-CHASSIS) DETAIL AB

WIRE PASSES THROUGH FLOOR TO SLIDEOUT CONTROL (WIRE ASM-CHASSIS) DETAIL AB

VIEW FA

265 CODES/STANDARDS-CSA/CMVSS

1B1 CODES/STANDARDS USA

1B1 265

FIRST USED 14 H25P

DO NOT SCALE DRAWING

TITLE: WIRING INSTL-BODY, 12V

SHEET 6 PART NO 182687 REV

FOR ELECTRICAL TORQUE SPECIFICATIONS SEE DWG NO. 128783-01-000

FOR ELECTRICAL CALLOUTS SEE DWG NO. 121339-01-000

X-X

* 182687 * A