

- 11. REQUIRES 5 GALLONS RV ANTIFREEZE 182955-01-000 PER TOLIET. FOLLOW TECMA TOLIET WINTERIZATION PROCEDURE.
- 10. APPLY PRIMER 126427-02-000 AND CEMENT 126427-01-000 BETWEEN ELBOW AND FLEX PIPE.
- 9. SEE DRAWING 061607 FOR INSTALLATION OF GROMMETS.
- 8. SECURE DRAINAGE PIPES TO CABINET USING WIRE TIE 108046-02-000, AND SCREW 000G67-10-12U AT INTERVALS OF NOT OF NOT MORE THAN 4 FEET APART.
- 7. SECURE VENT PIPE TO GROMMET WITH CLAMP 062401-02-000.
- 6. VENT PIPE MUST PROJECT 51 MIN AND 64 MAX ABOVE ROOF FOR PROPER FIT AND FUNCTION. ADD S-1 (116666-01-CHT SEAL-VENT PIPE) AROUND PIPE ON ROOF BEFORE VENT CAP IS INSTALLED.
- 5. SEAL AROUND SHOWER WITH SILICONE.
- 4. USE SMOOTH PLUMBERS PUTTY 167459-01-000 TO SEAL STRAINER (0.2 PER STRAINER).
- 3. ALL PIPE AND FITTINGS TO BE ASSEMBLED WITH SOLVENT 004020-01-000 (USA), 004020-02-000 (CAN)
- 2. SLOPE OF TRAP ARM MUST BE 6 PER 305 mm.
- 1. SLOPE OF HORIZONTAL PIPING TO BE MINIMUM OF 3 PER 305 mm.

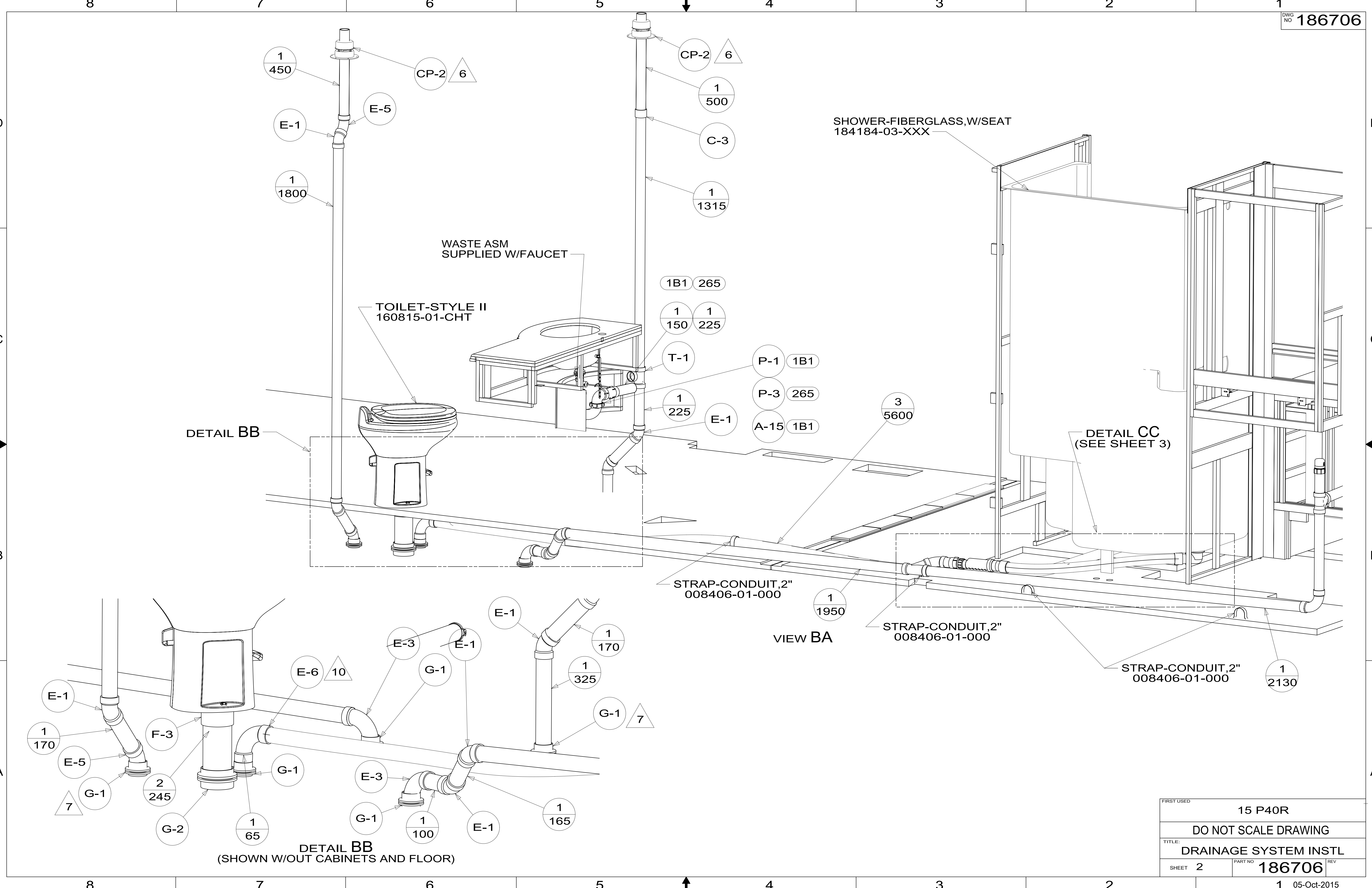
- 21S WASHER/DRYER STACKED
- 1B1 CODES/STANDARDS USA
- 265 CODES/STDS-CSA,CMVSS
- 21M WASHER/DRYER PREP

WINNEBAGO INDUSTRIES, INC. COPYRIGHT 2014

DFT-ORIG	ORIG. DATE
CHKR	ALL DIMENSIONS ARE IN MILLIMETERS
P.E.	
M.E.	FIRST USED
DSNR	15 P40R
UNSPECIFIED TOLERANCES ARE:	
WHOLE DIM (X)	: 3
ONE-PLACE (X.X)	: 1.5
TWO-PLACE (X.XX)	: 0.50
ANGLE	: 1°
THIRD ANGLE PROJECTION	
DO NOT SCALE DRAWING	REFER TO ES0018 FOR FASTENER TIGHTENING GUIDELINES
TITLE: DRAINAGE SYSTEM INSTL	
SHEET 1 OF 4	PART NO 186706 REV
REF:	1 05-Oct-2015

FOR DRAINAGE CALLOUTS SEE DWG NO 116229-01-000

186706



DETAIL BB

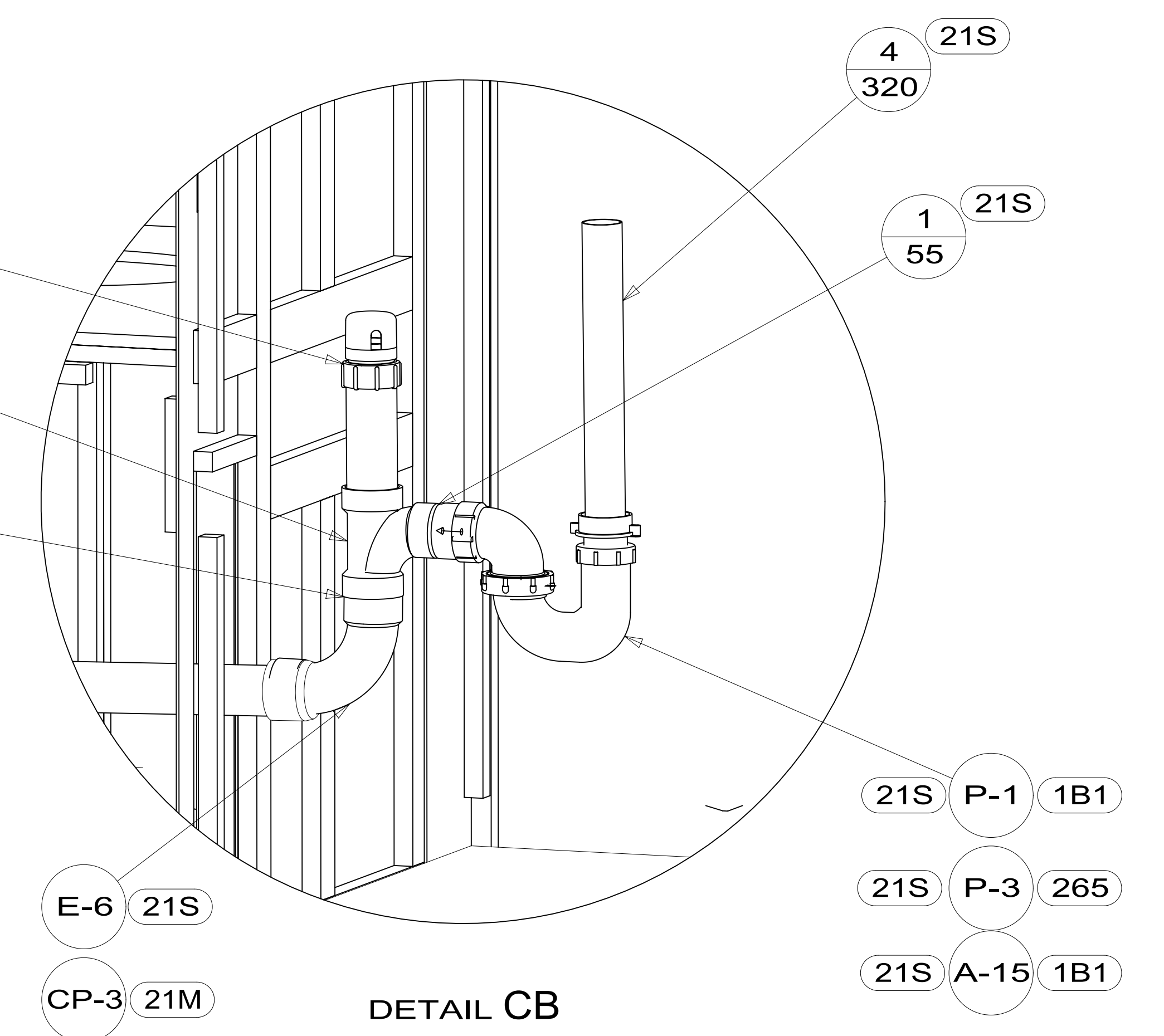
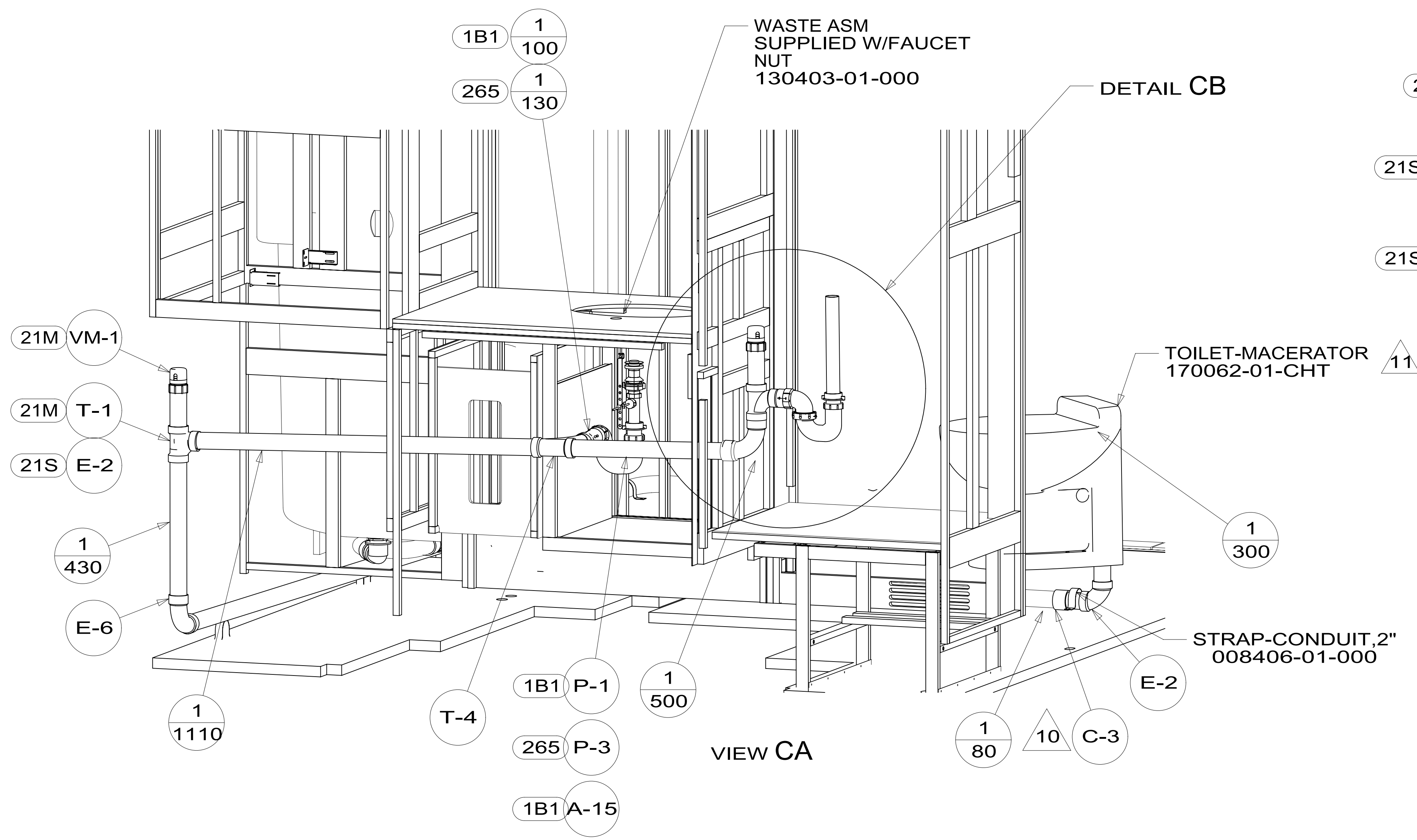
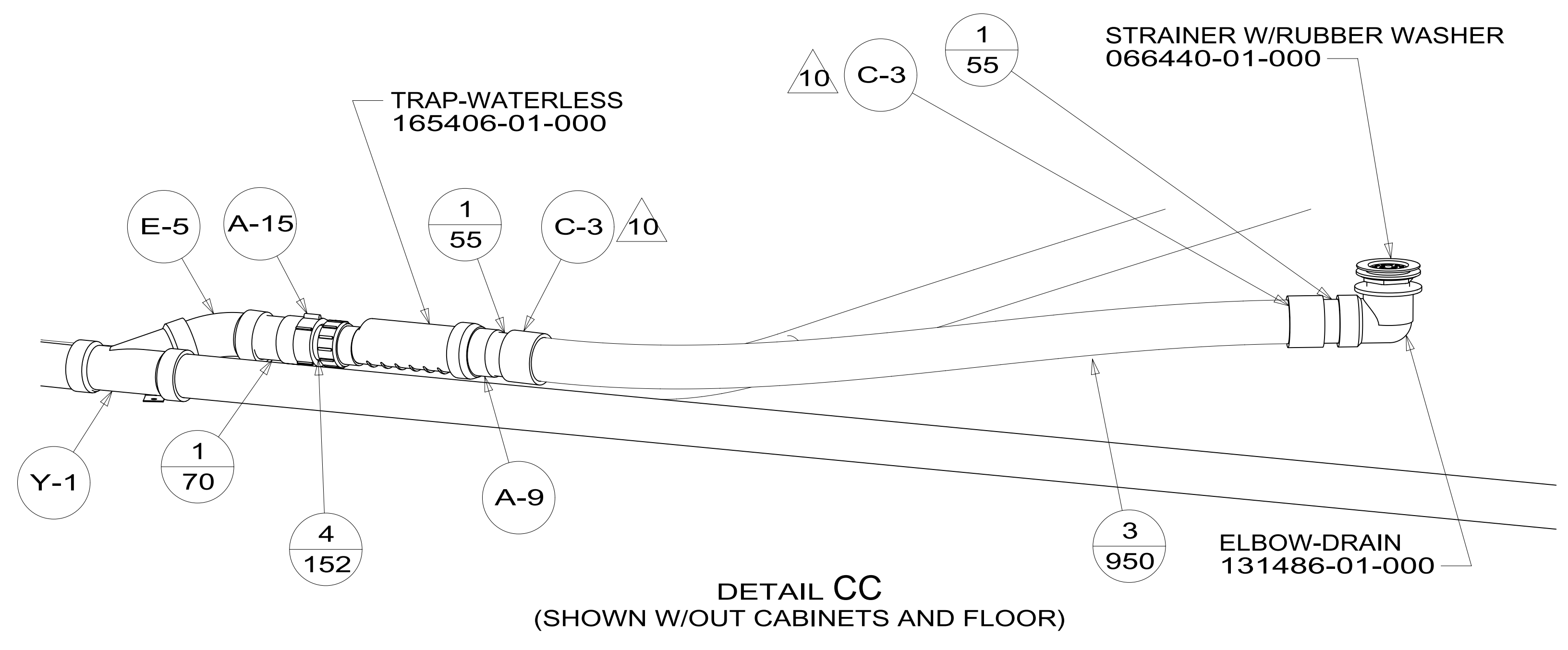
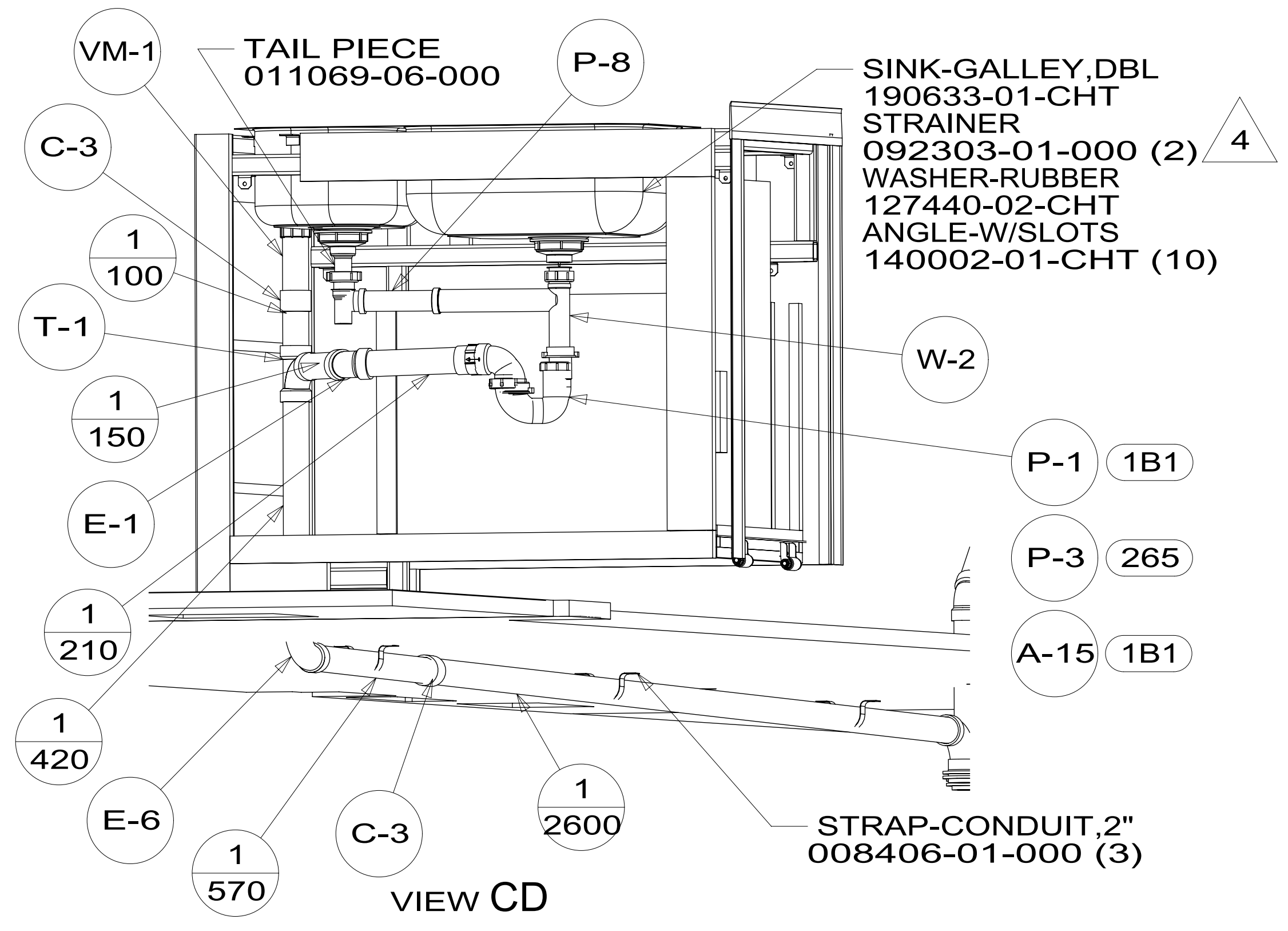
DETAIL CC (SEE SHEET 3)

VIEW BA

DETAIL BB (SHOWN W/OUT CABINETS AND FLOOR)

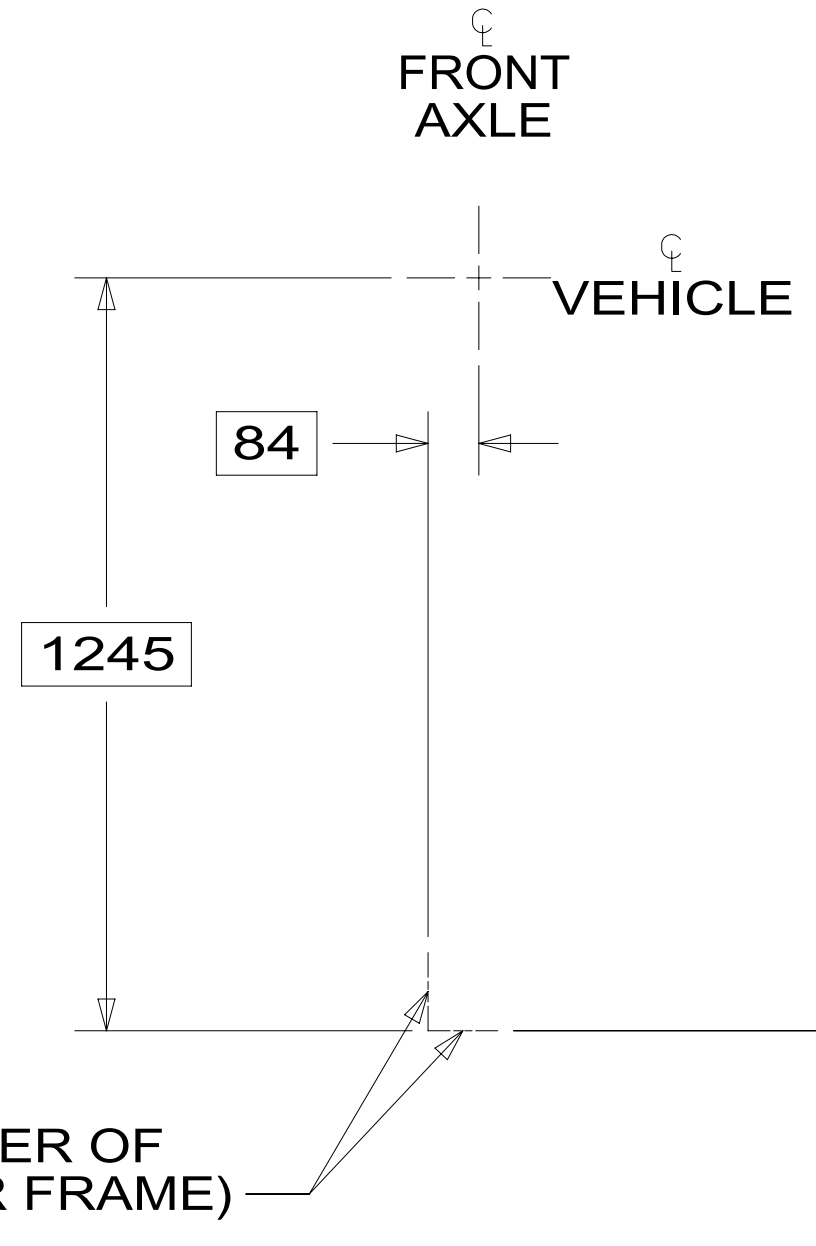
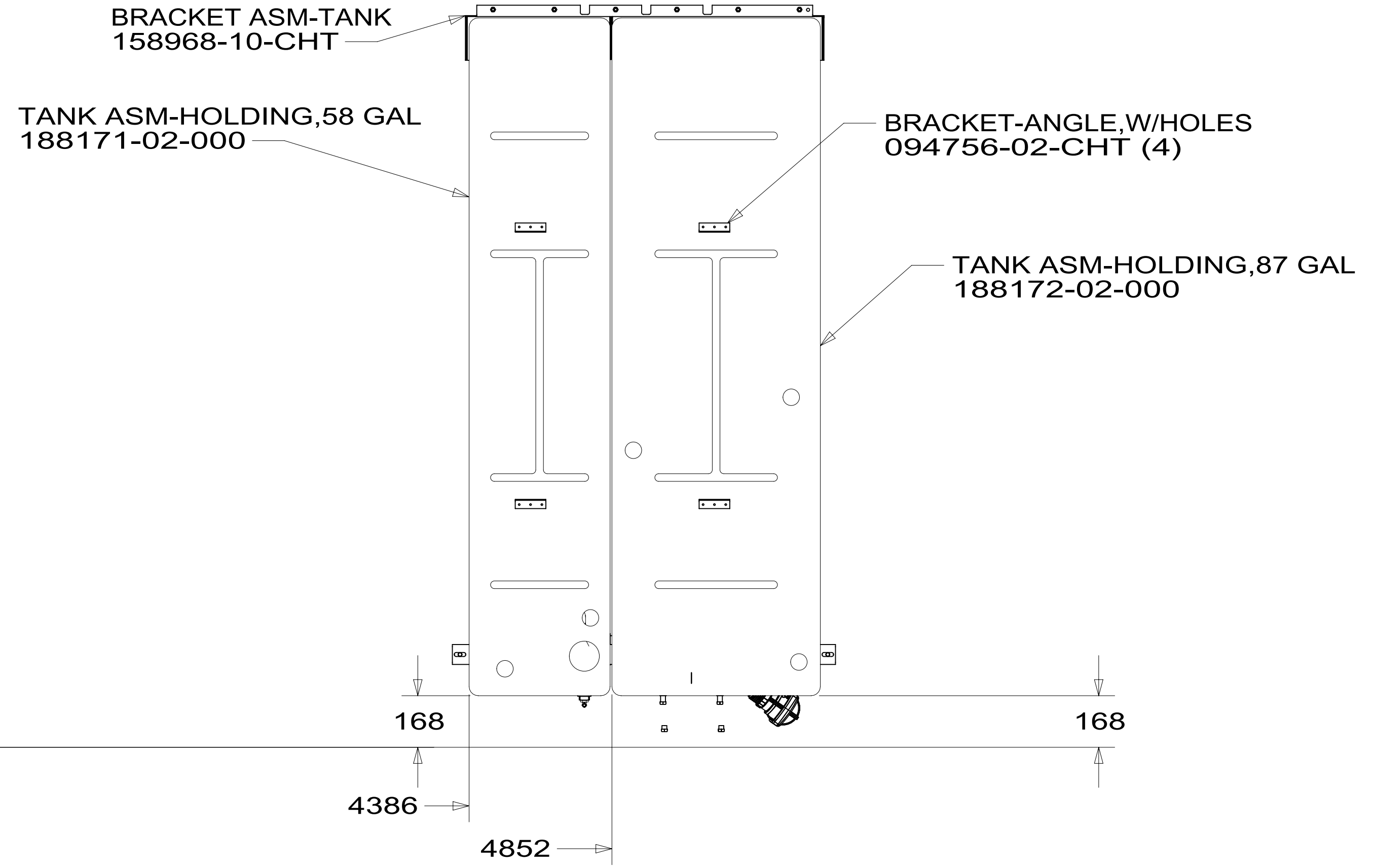
FIRST USED	15 P40R	
TITLE:	DO NOT SCALE DRAWING	
SHEET	2	PART NO 186706
REV	1	05-Oct-2015

186706

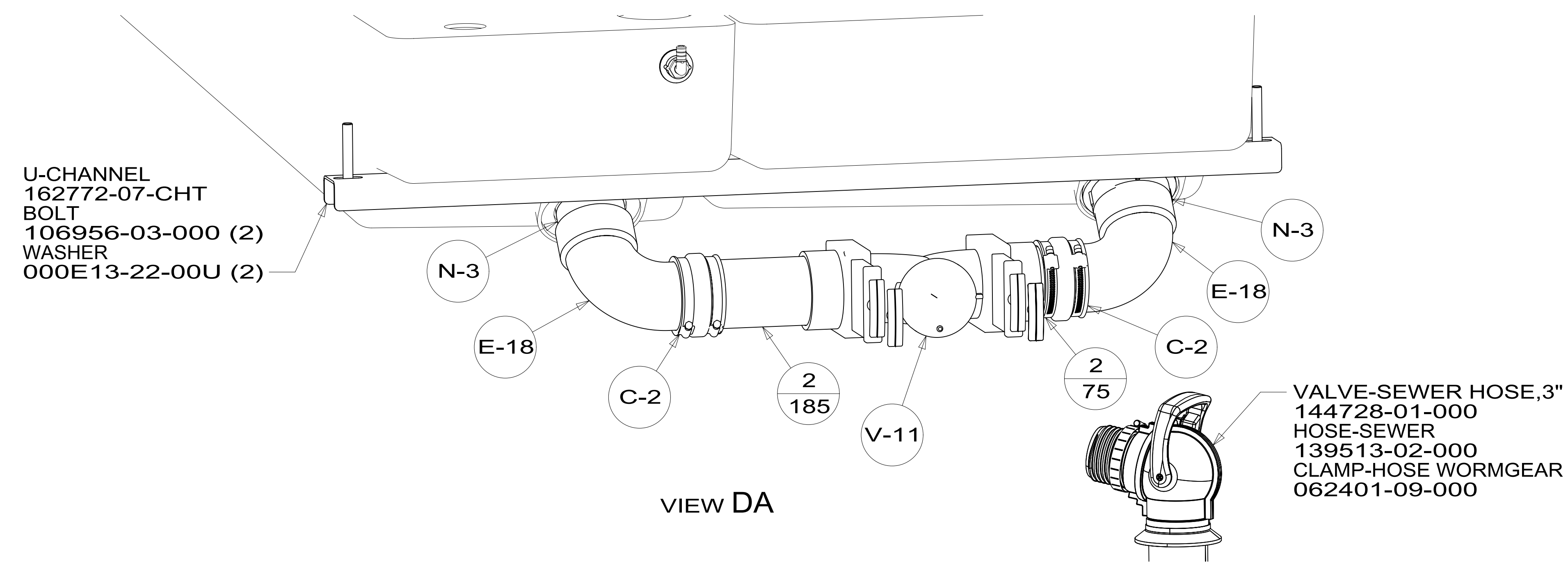


FIRST USED	15 P40R	
TITLE:	DO NOT SCALE DRAWING	
SHEET 3	PART NO	186706
	REV	1
05-Oct-2015		

186706



TOP VIEW SHOWING TANKS AND DRAINS

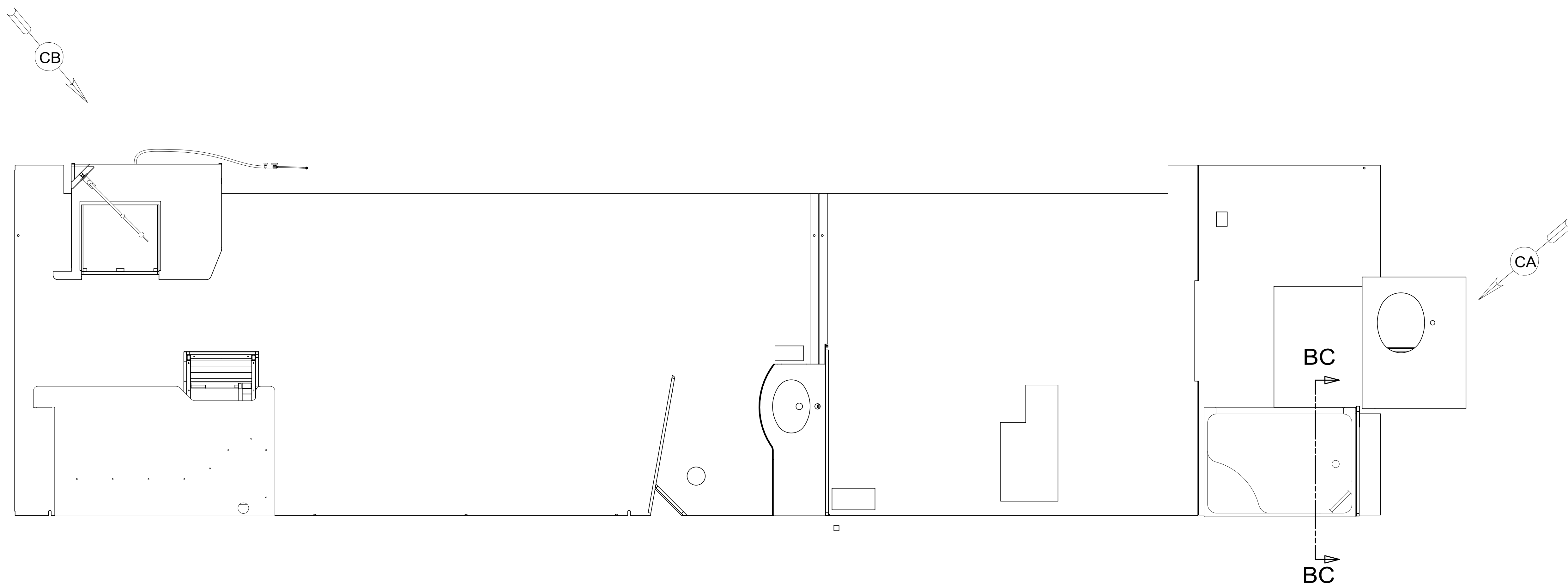


FIRST USED	15 P40R	
DO NOT SCALE DRAWING		
TITLE: DRAINAGE SYSTEM INSTL		
SHEET 4	PART NO 186706	REV
1 05-Oct-2015		

186706

DWG NO	SERVICE CENTER ASM
186709-01	163268-22-XXX
186709-02	163268-27-XXX

RELEASE	REV/DATE	DWG NO	186709
REV ZONE	REVISION RECORD	DATE	DFT-ORIG



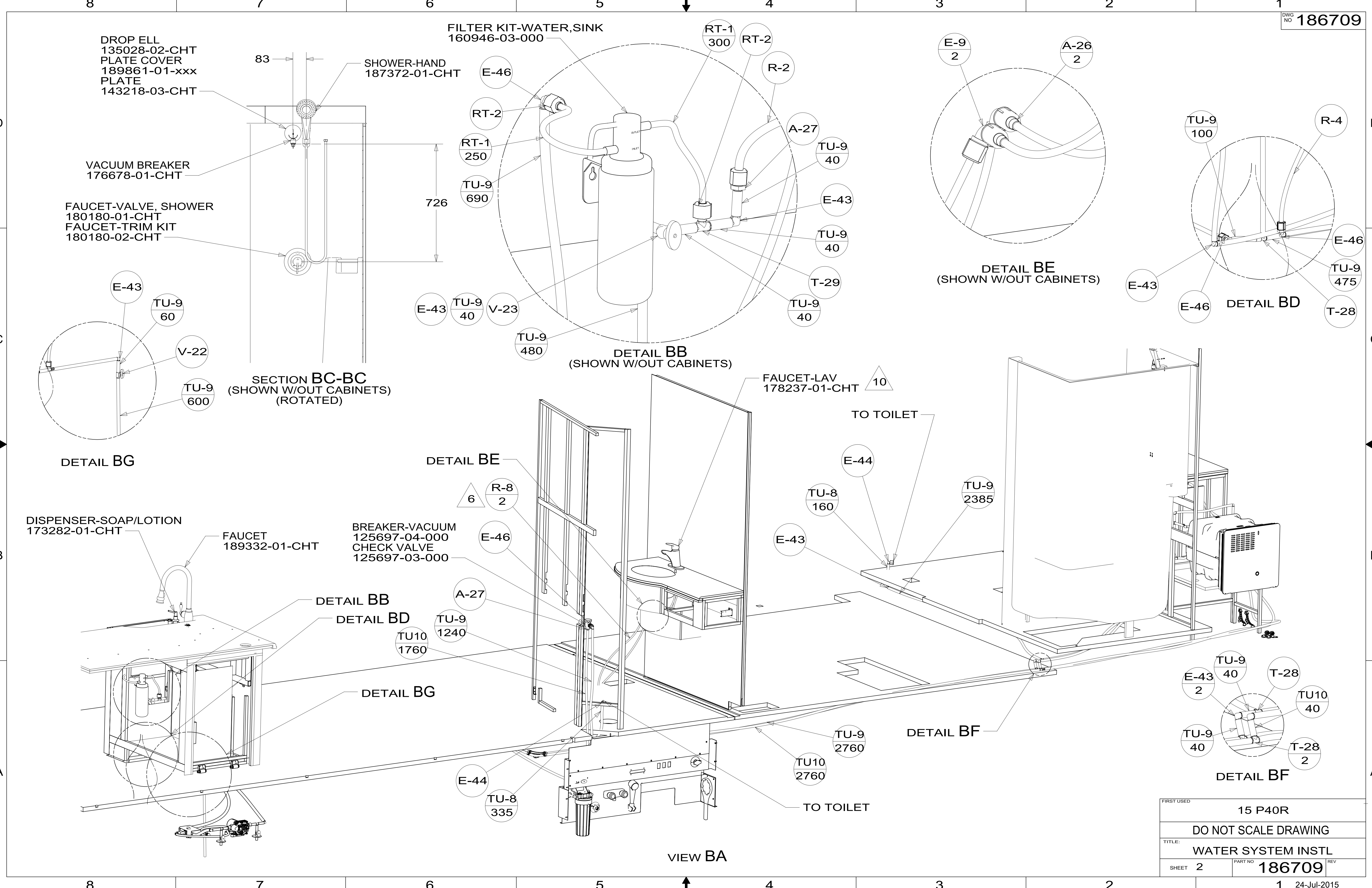
- NOTES:
1. PLASTIC FITTINGS TO BE SEALED WITH SEALANT 084456-01-000.
 2. TUBING TO BE INSTALLED WITH SUFFICIENT SLOPE TO PROVIDE DRAINAGE TO NEAREST VALVE.
 3. ALL TUBING TO BE SECURED AT 1200 INTERVALS MAXIMUM WITH CLAMP 010495-01-000 AND SCREW 000G67-10-12U OR EQUIVALENT.
 4. ADD TEFLON TAPE 010405-02-000.
 5. ADD PIPE WRAP (LADDER SCRAP 110157-02-000) INSULATION.
 6. LABEL HOT AND COLD SUPPLY TUBES AND TAPE FITTING TO TUBE BEFORE CABINET SET TO PREVENT MOVEMENT.
 7. ALL CRIMP FITTINGS TO 5/8" PEX TUBING REQUIRE 5/8" CLAMP 140171-04-000.
 8. ALL CRIMP FITTINGS TO 1/2" PEX TUBING REQUIRE 1/2" CLAMP 140171-03-000.
 9. VALVE MUST REMAIN OPEN AFTER WATER TEST.
 10. INSTALL FAUCET W/OUT BASEPLATE.
 11. FOR INSTALLATION USE SILICON ADHESIVE 131264-05-CHT, APPLY ON TOP OF PLATE, PLACE COVER ON, AND PUT ADHESIVE AROUND COVER.

- 1BT WATER HEATER, TANKLESS
- 1B2 WTR HTR-10GAL/ELEC/LP/MTRAIID
- 21S WASHER & DRYER-PAIR
- 21M WASHER/DRYER PREP

FOR WATER CALLOUTS SEE DWG NO 116230-01-000

WINNEBAGO		COPYRIGHT 2014 WINNEBAGO INDUSTRIES, INC.	
DFT-ORIG	ORIG. DATE	ALL DIMENSIONS ARE IN MILLIMETERS	
CHKR			
P.E.			
M.E.	FIRST USED	15 P40R	
DSNR			
UNSPECIFIED TOLERANCES ARE:		MATERIAL:	
WHOLE DIM (X)	: 3		
ONE-PLACE (X.X)	: 1.5		
TWO-PLACE (X.XX)	: 0.50		
ANGLE	: 1°		
THIRD ANGLE PROJECTION			
DO NOT SCALE DRAWING	REFER TO ES0018 FOR FASTENER TIGHTENING GUIDELINES		
TITLE: WATER SYSTEM INSTL			
SHEET 1 OF 4	PART NO 186709	REV	
REF:	1	24-Jul-2015	

*186709 *A



FILTER KIT-WATER, SINK
160946-03-000

DROP ELL
135028-02-CHT
PLATE COVER
189861-01-xxx
PLATE
143218-03-CHT

SHOWER-HAND
187372-01-CHT

VACUUM BREAKER
176678-01-CHT

FAUCET-VALVE, SHOWER
180180-01-CHT
FAUCET-TRIM KIT
180180-02-CHT

FAUCET-LAV
178237-01-CHT

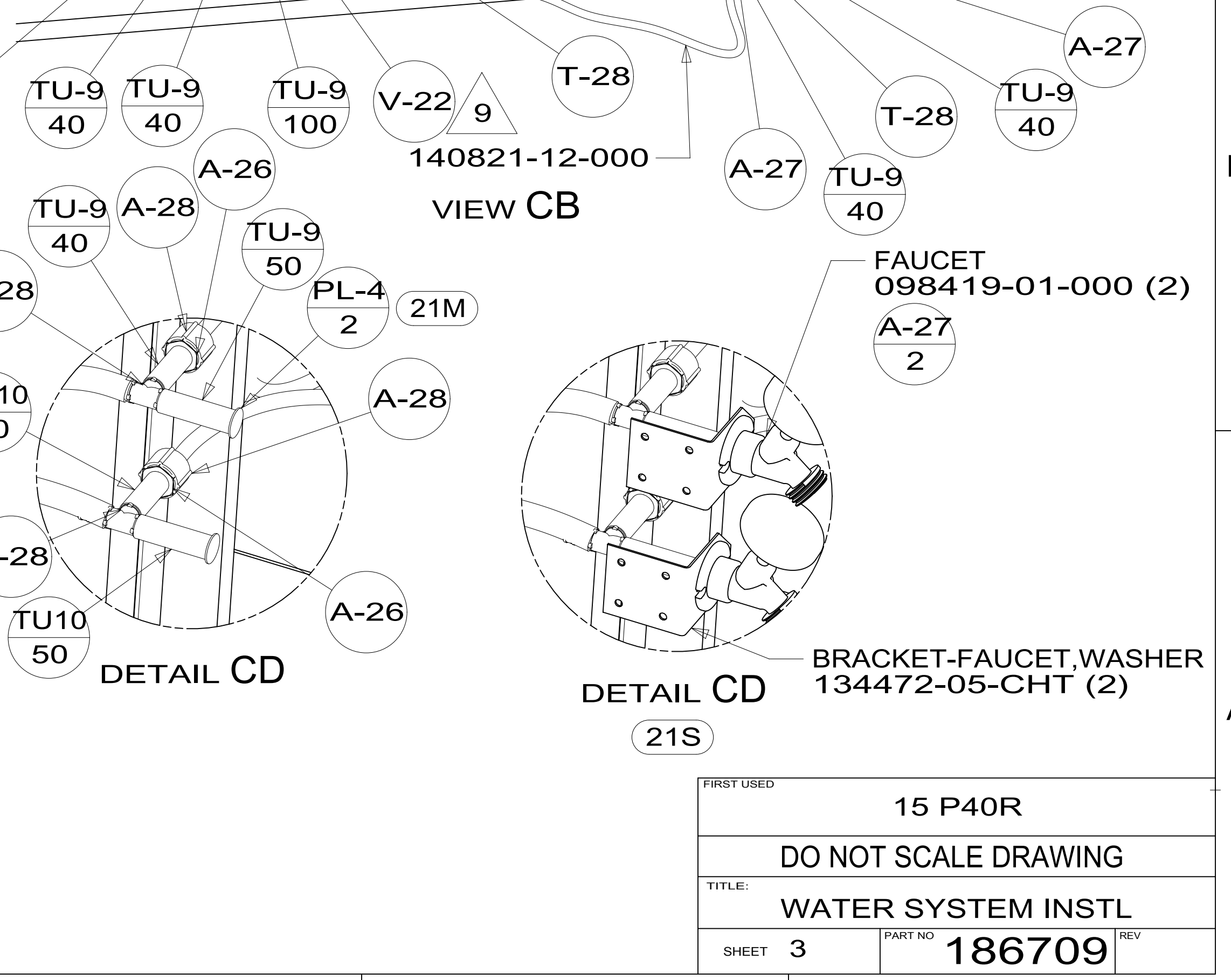
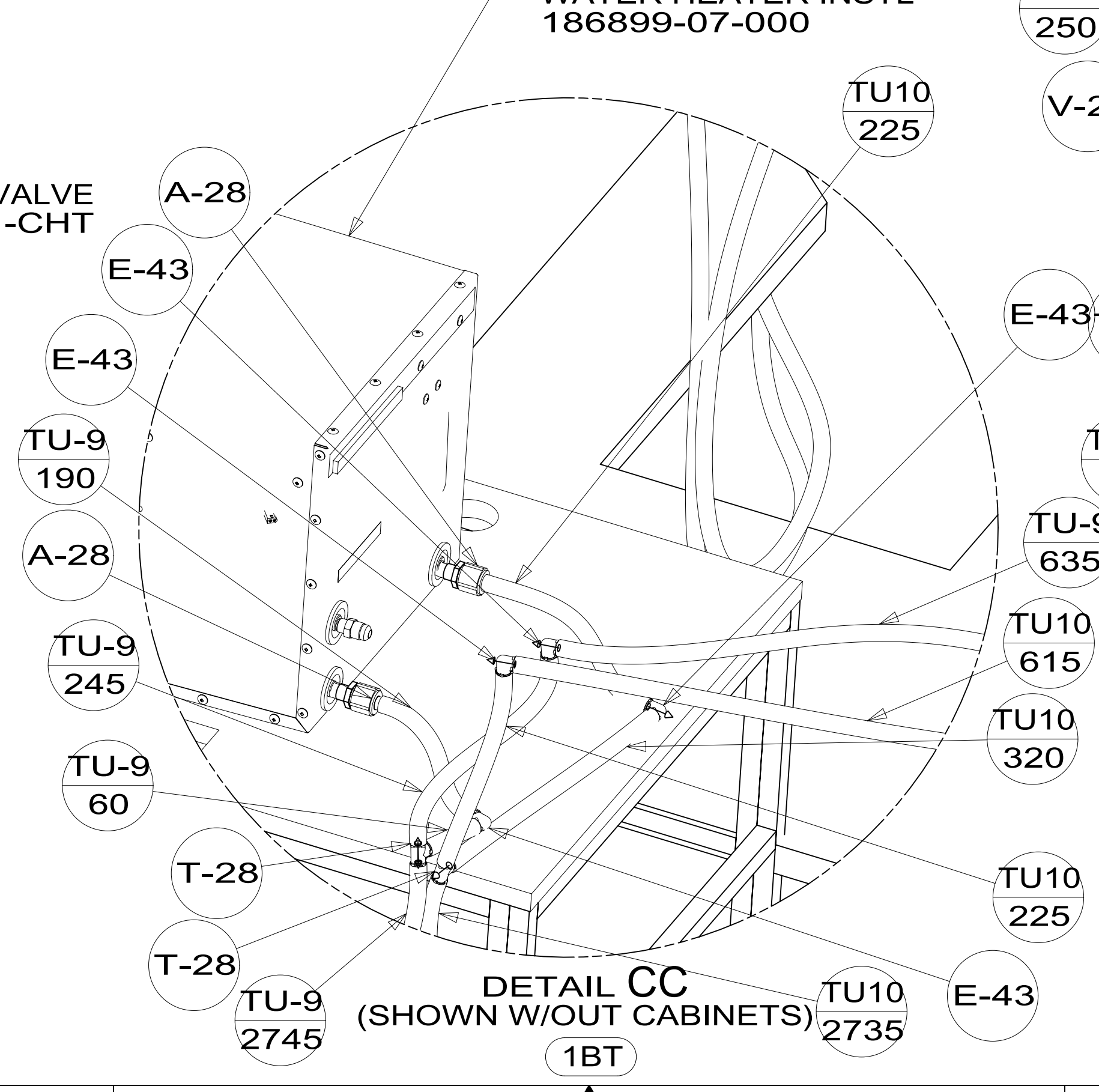
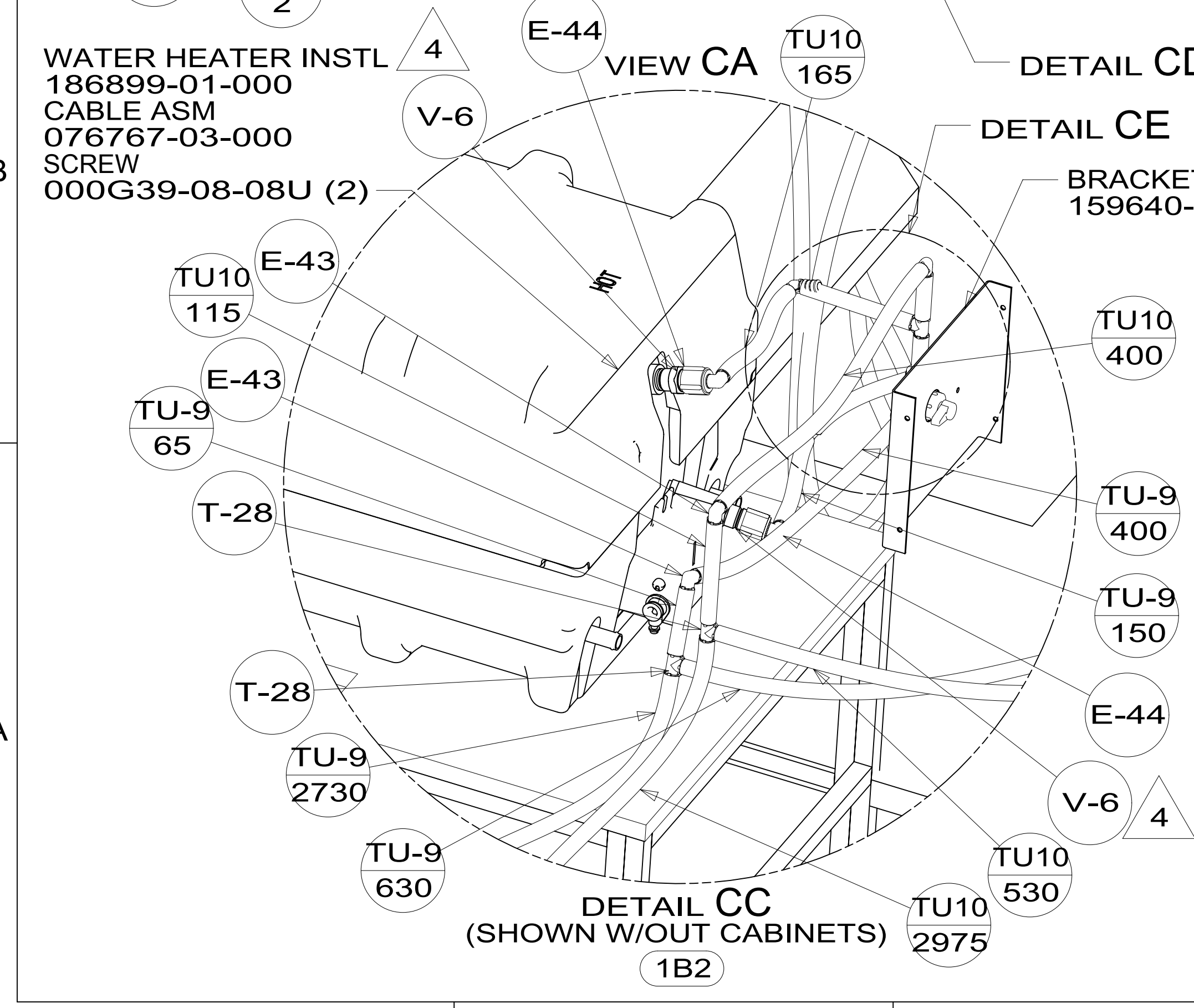
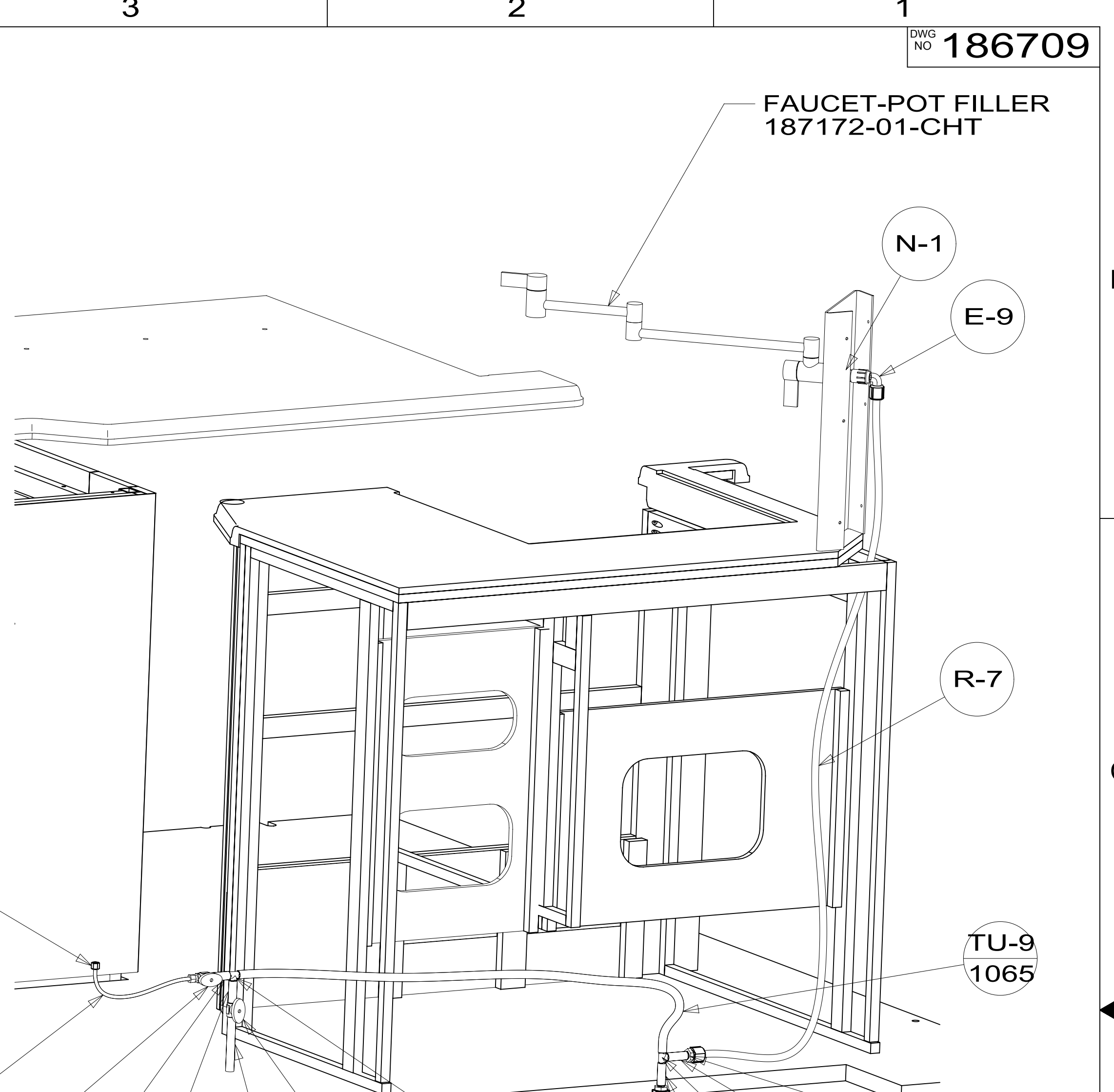
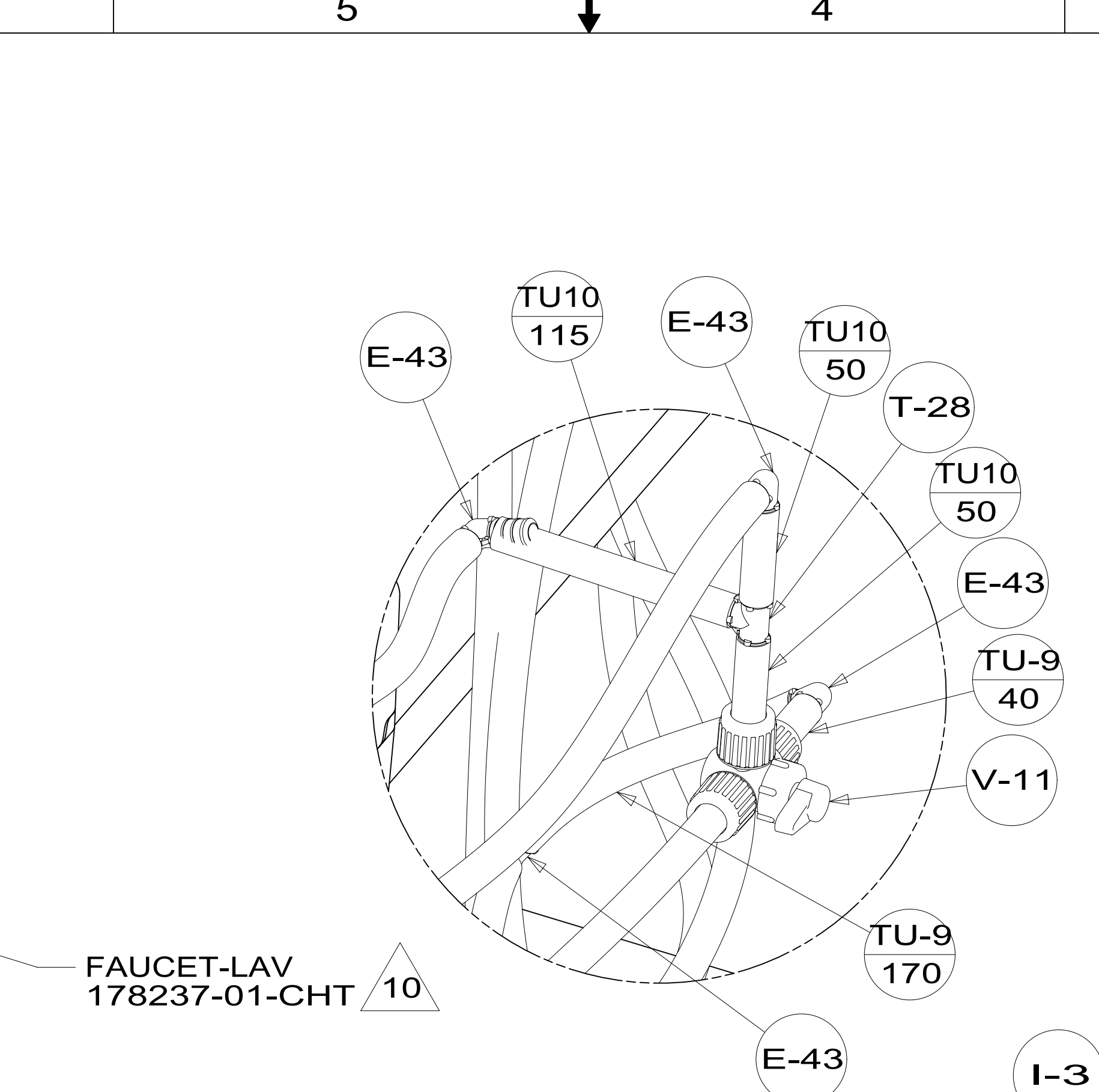
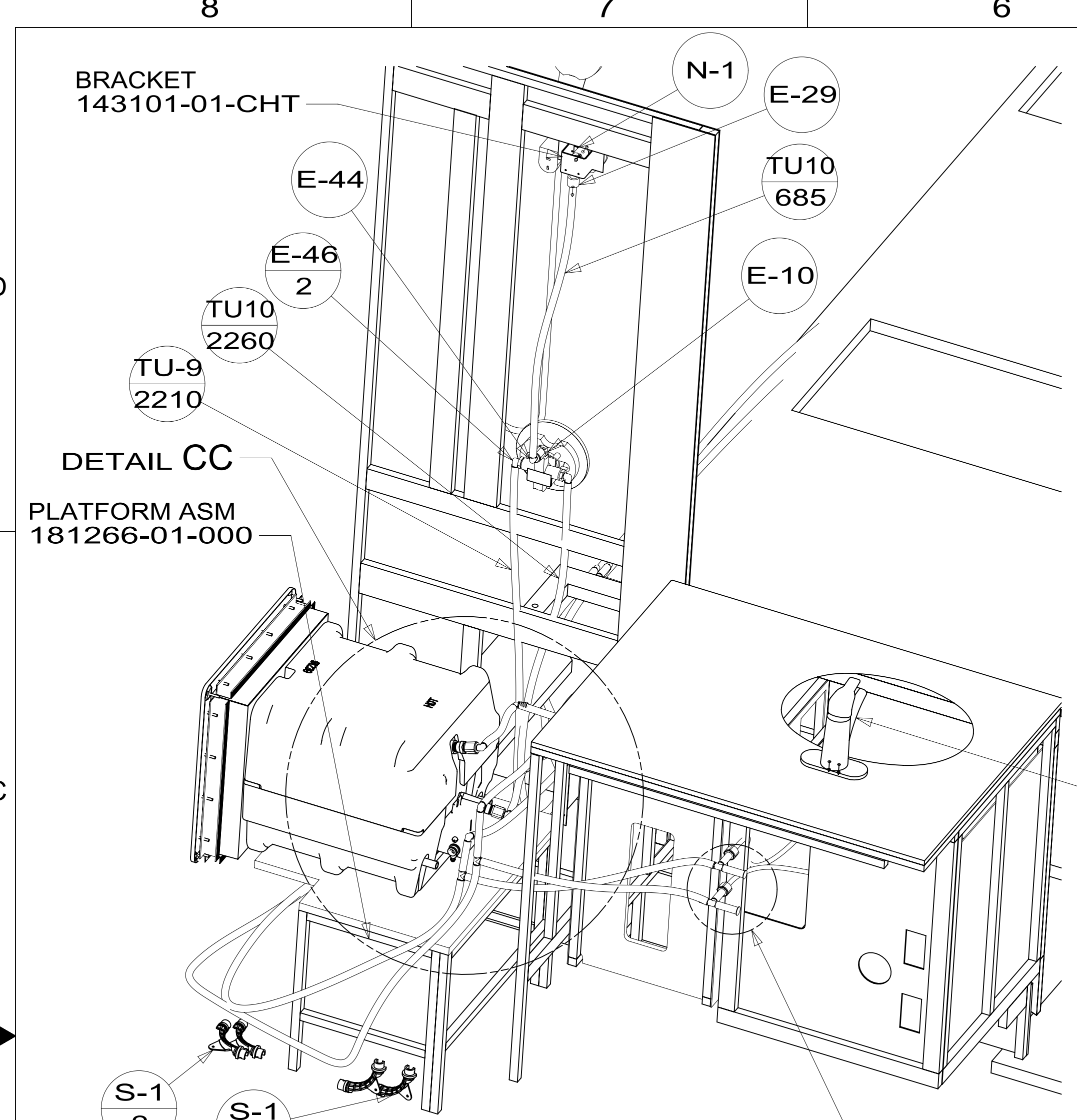
DISPENSER-SOAP/LOTION
173282-01-CHT

FAUCET
189332-01-CHT

BREAKER-VACUUM
125697-04-000
CHECK VALVE
125697-03-000

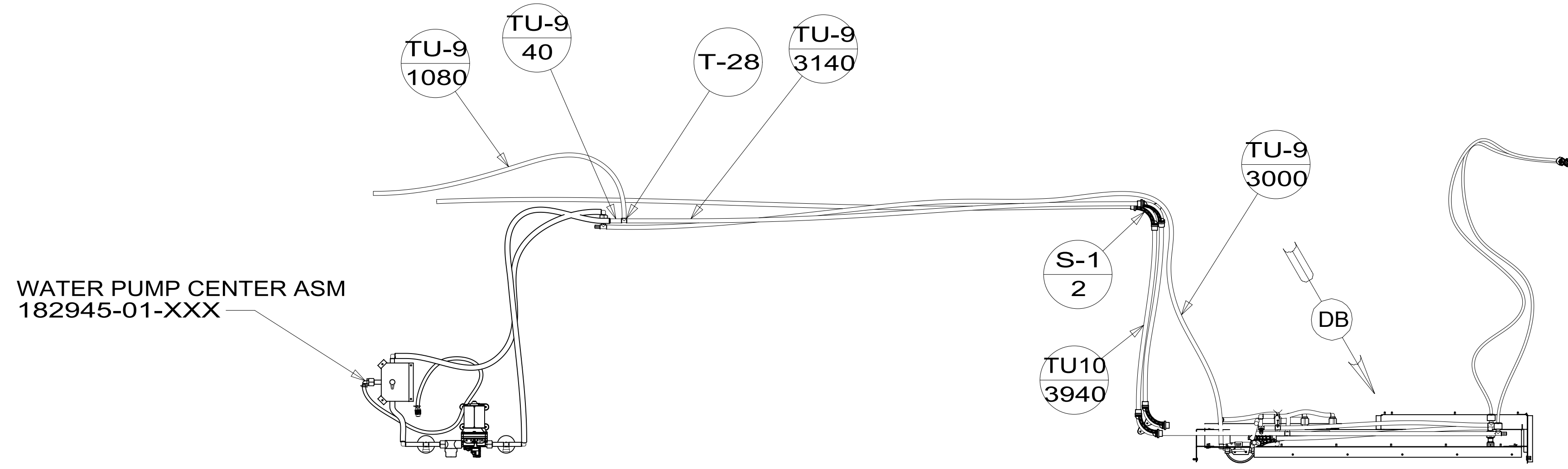
FIRST USED	15 P40R	
TITLE:	DO NOT SCALE DRAWING	
	WATER SYSTEM INSTL	
SHEET 2	PART NO 186709	REV
		24-Jul-2015

186709

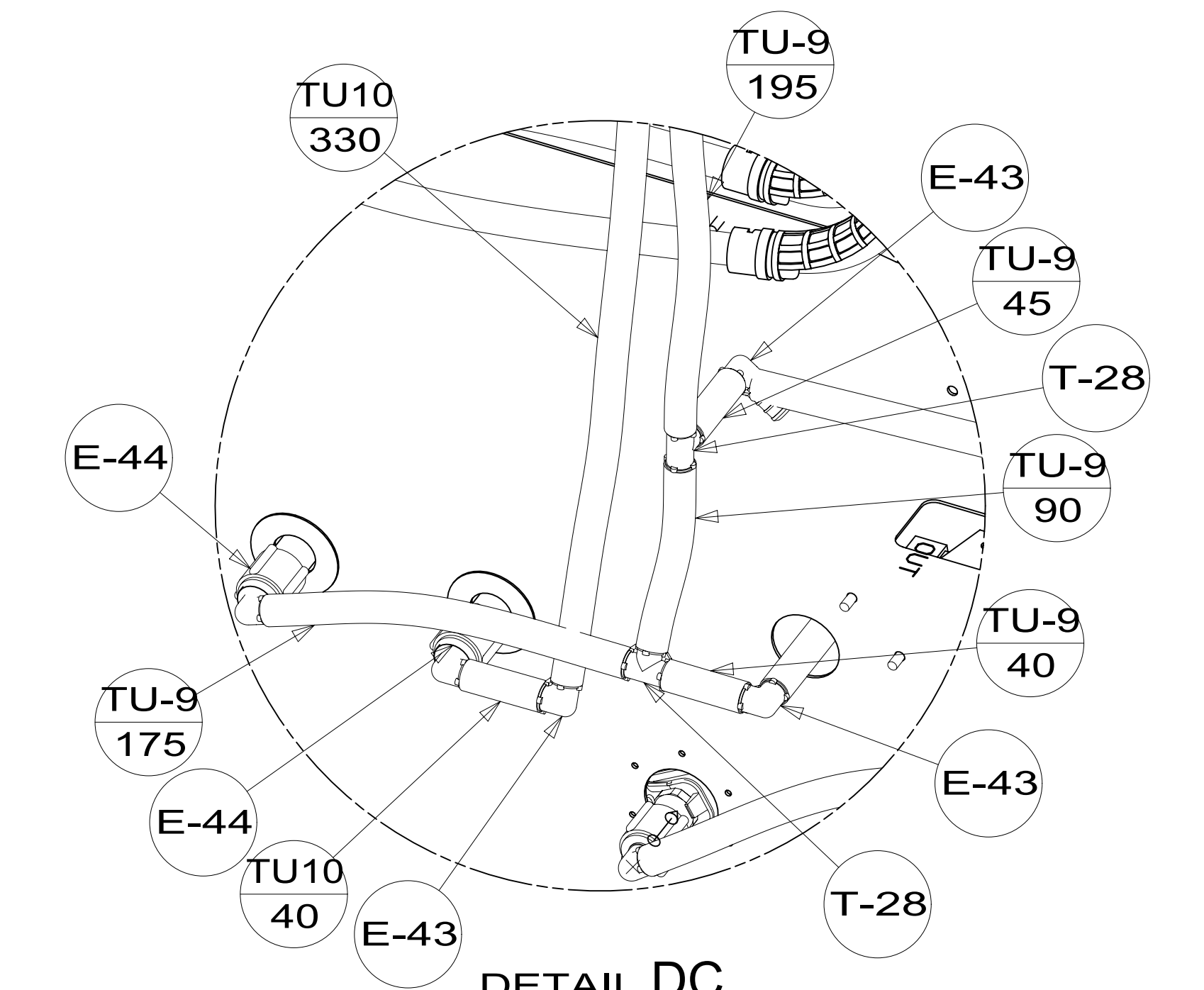
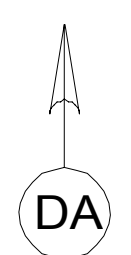


FIRST USED	15 P40R	
TITLE:	DO NOT SCALE DRAWING	
SHEET 3	PART NO	186709
	REV	
	24-Jul-2015	

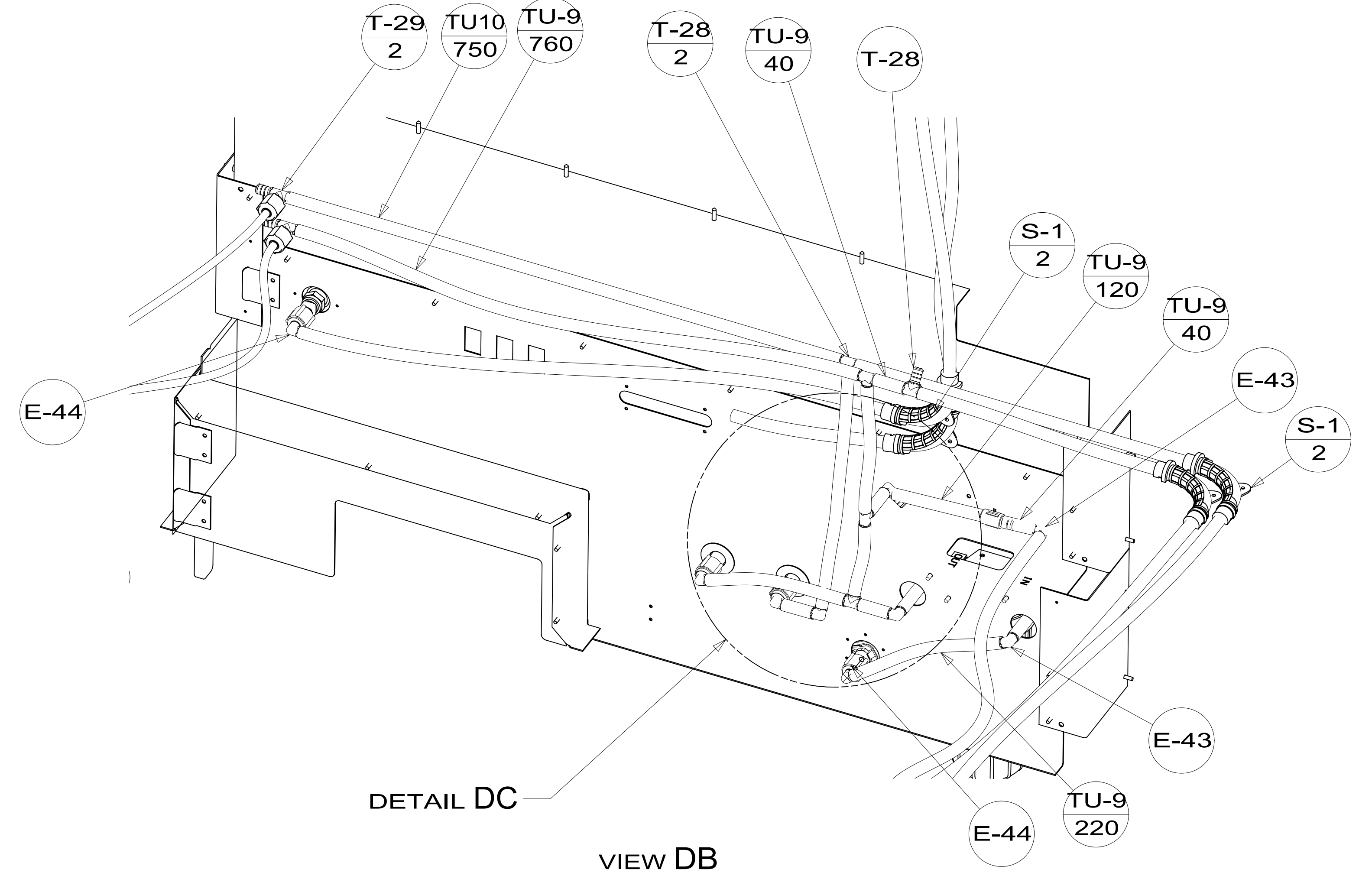
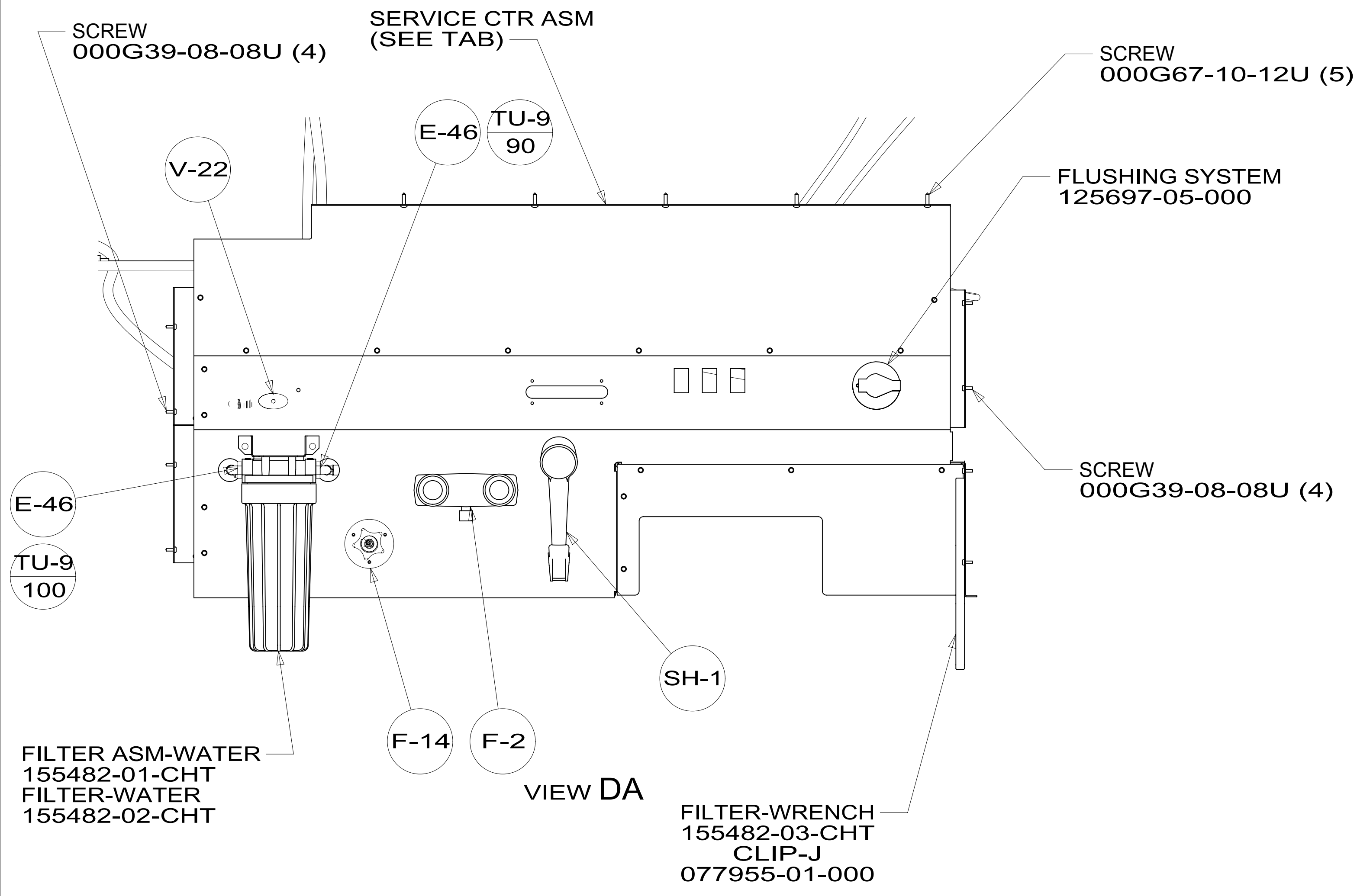
186709



SHOWING LINES UNDER FLOOR



DETAIL DC



FIRST USED	15 P40R	
TITLE:	DO NOT SCALE DRAWING	
	WATER SYSTEM INSTL	
SHEET 4	PART NO 186709	REV
		24-Jul-2015

186709