

- NOTES:**
12. REQUIRES 5 GALLONS RV ANTIFREEZE 182955-01-000 PER TOLIET. FOLLOW TECMA TOLIET WINTERIZATION PROCEDURE.
 11. GLUE FITTING AFTER CABINET IS INSTALLED.
 10. APPLY PRIMER 126427-02-000 AND CEMENT 126427-01-000 BETWEEN ELBOW AND FLEX PIPE.
 9. SEE DRAWING 061607 FOR INSTALLATION OF GROMMETS.
 8. SECURE DRAINAGE PIPES TO CABINET USING WIRE TIE 108046-02-000, AND SCREW 000G67-10-12U AT INTERVALS OF NOT OF NOT MORE THAN 4 FEET APART.
 7. SECURE VENT PIPE TO GROMMET WITH CLAMP 062401-02-000.
 6. VENT PIPE MUST PROJECT 51 MIN AND 64 MAX ABOVE ROOF FOR PROPER FIT AND FUNCTION. ADD S-1 (116666-01-CHT SEAL-VENT PIPE) AROUND PIPE ON ROOF BEFORE VENT CAP IS INSTALLED.
 5. SEAL AROUND SHOWER WITH SILICONE.
 4. USE SMOOTH PLUMBERS PUTTY 167459-01-000 TO SEAL STRAINER (0.2 PER STRAINER).
 3. ALL PIPE AND FITTINGS TO BE ASSEMBLED WITH SOLVENT 004020-01-000 (USA), 004020-02-000 (CAN)
 2. SLOPE OF TRAP ARM MUST BE 6 PER 305 mm.
 1. SLOPE OF HORIZONTAL PIPING TO BE MINIMUM OF 3 PER 305 mm.

- 21S WASHER/DRYER STACKED
- 1B1 CODES/STANDARDS USA
- 265 CODES/STDS-CSA,CMVSS
- 21M WASHER/DRYER PREP

WINNEBAGO INDUSTRIES, INC. COPYRIGHT 2014

DFTR	ORIG. DATE
CHKR	ALL DIMENSIONS ARE IN MILLIMETERS
P.E.	
M.E.	FIRST USED
DSNR	15 L36G
UNSPECIFIED TOLERANCES ARE:	
WHOLE DIM (X)	: 3
ONE-PLACE (X.X)	: 1.5
TWO-PLACE (X.XX)	: 0.50
ANGLE	: 1°
THIRD ANGLE PROJECTION	
DO NOT SCALE DRAWING	REFER TO ES0018 FOR FASTENER TIGHTENING GUIDELINES
TITLE: DRAINAGE SYSTEM INSTL	
SHEET 1 OF 4	PART NO 189550 REV
REF:	1 08-Oct-2015

FOR DRAINAGE CALLOUTS SEE DWG NO 116229-01-000

*189550 *A

4 SINK-GALLEY
184806-01-CHT
STRAINER
092303-01-000 (2)
WASHER-RUBBER
127440-02-CHT
ANGLE-W/SLOTS
140002-01-CHT (10)

STRAP-CONDUIT
008406-01-000 (21S)

1 140 1B1 21S

1 160 265 21S

4 320 21S

DETAIL BD

P-1 21S 1B1

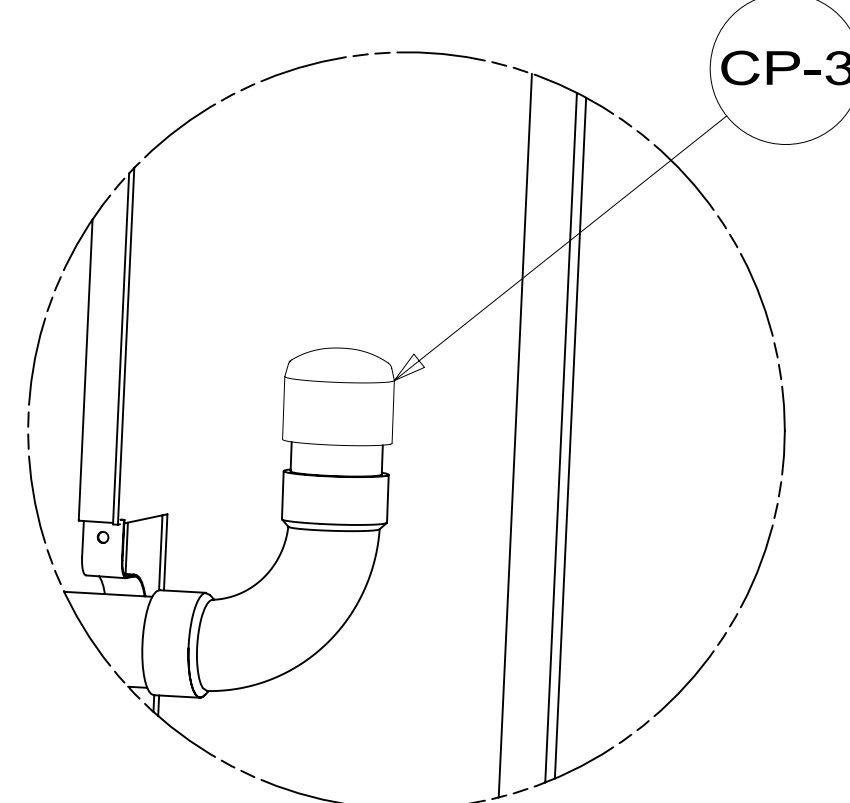
P-3 21S 265

A-15 21S 1B1

1 75

E-6

STRAP-CONDUIT
008406-01-000(3)



DETAIL BD
21M

DETAIL BB

1 935

W-2

P-1 1B1

P-3 265

A-15 1B1

C-3

1 1900

21S T-1

VM-1 21S

10 ELBOW
136111-01-000

3 270

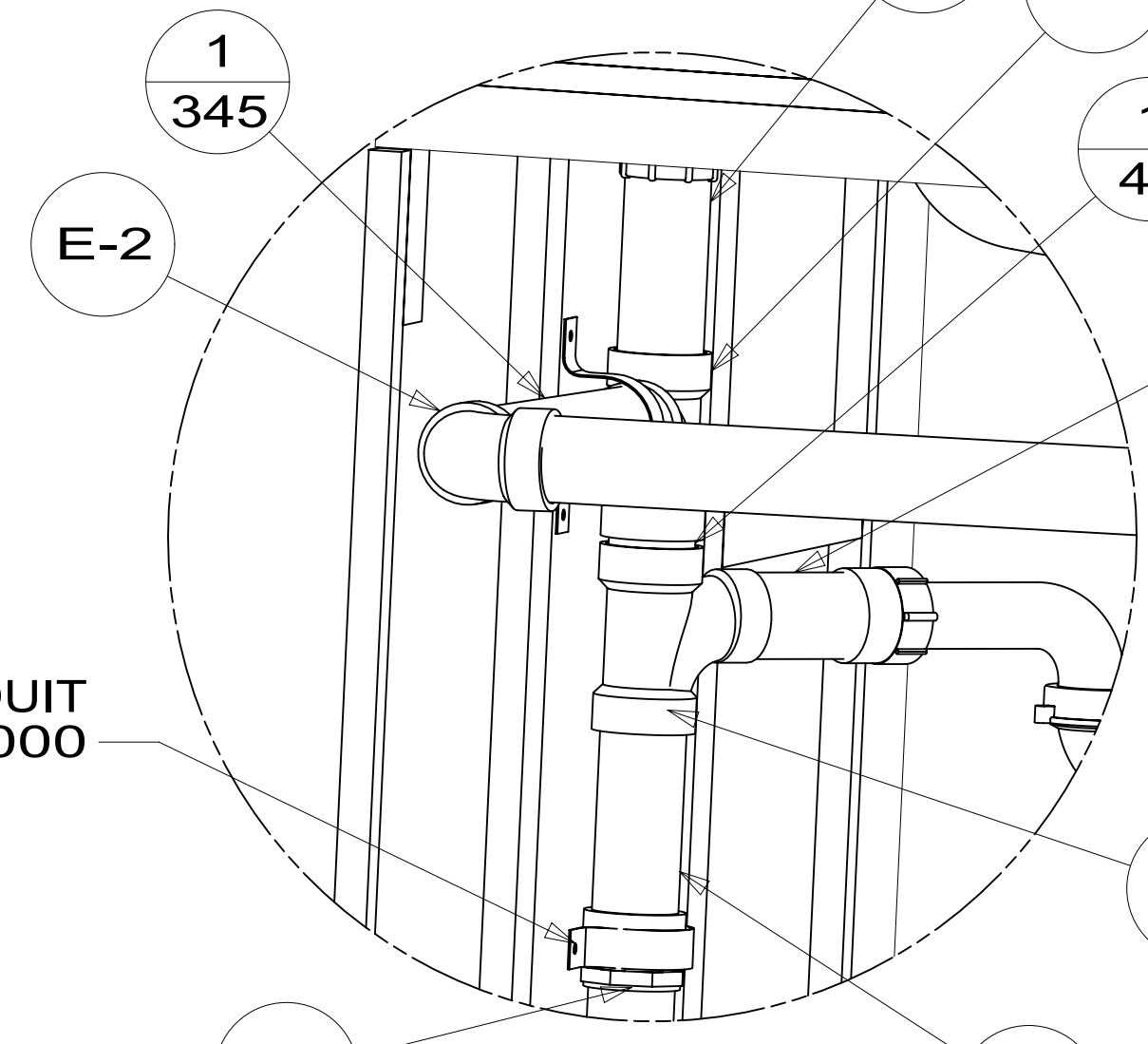
DETAIL BC

1 1635

VIEW BA

G-1

E-14



DETAIL BB

1 345

1 40

1 105 1B1

1 190 265

STRAP-CONDUIT
008406-01-000

A-13

1 130

10 ELBOW
136111-01-000

7 A-13

1 65

FITTING
136656-01-CHT

E-2

1 60

E-14 10

PL-1 B-2

A-13

T-1

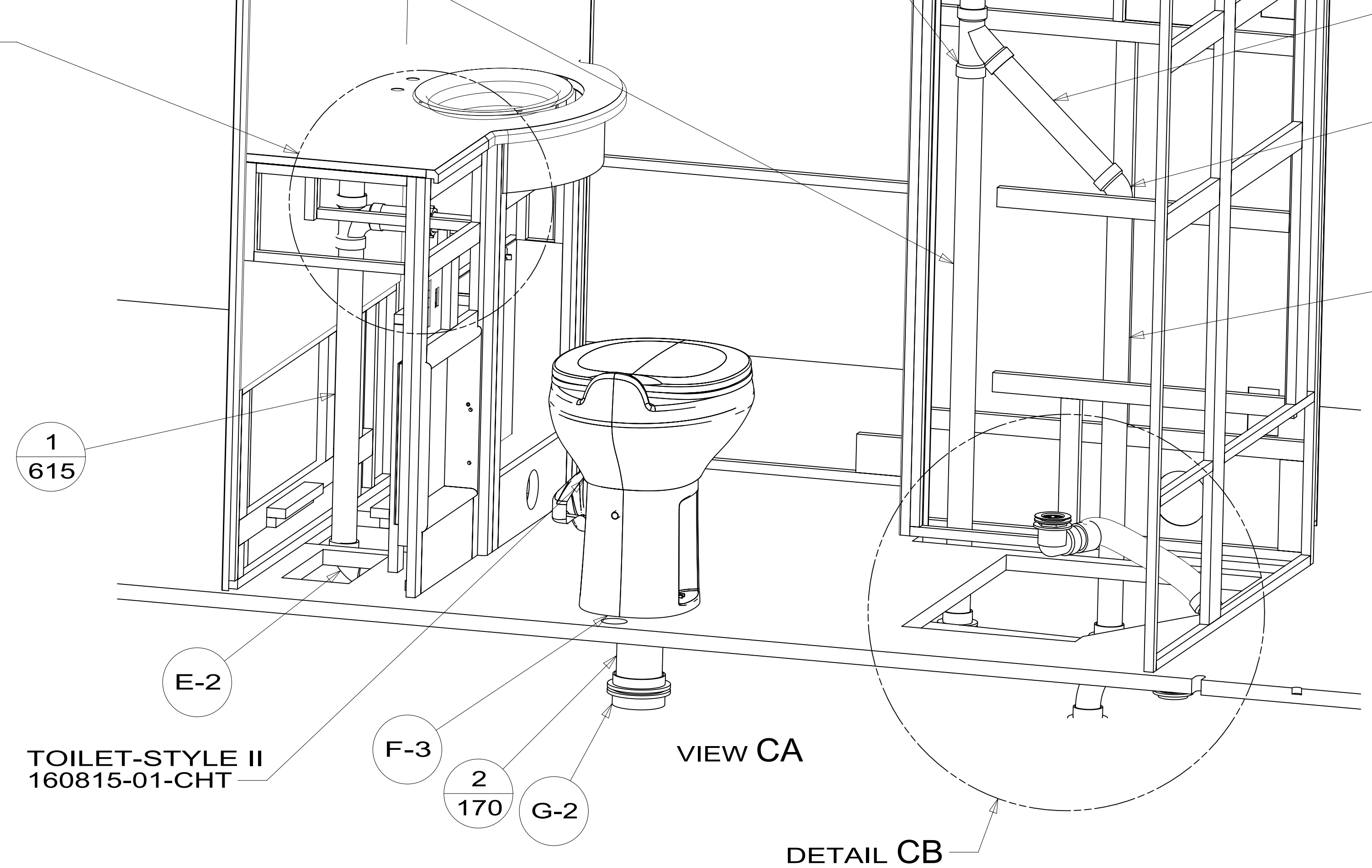
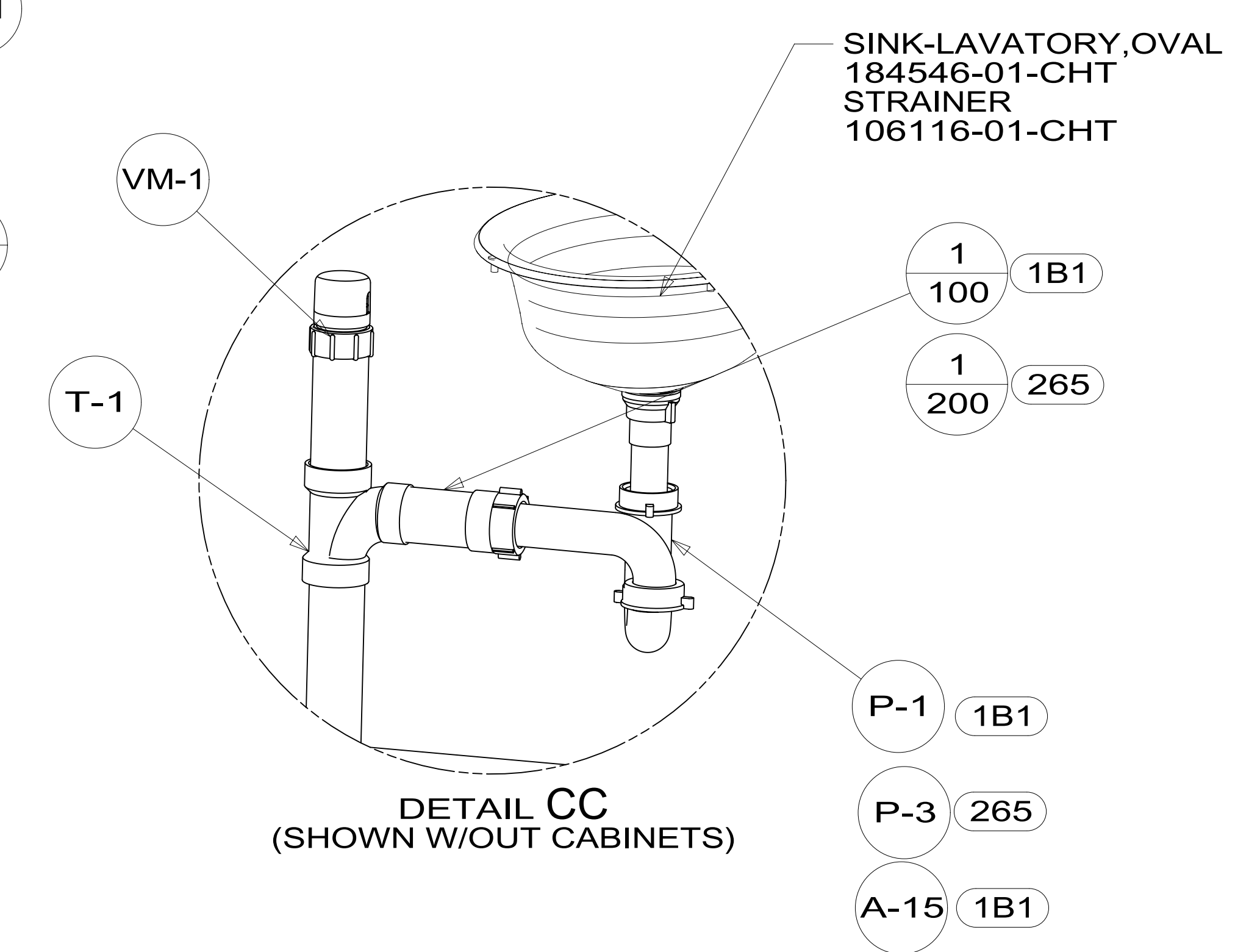
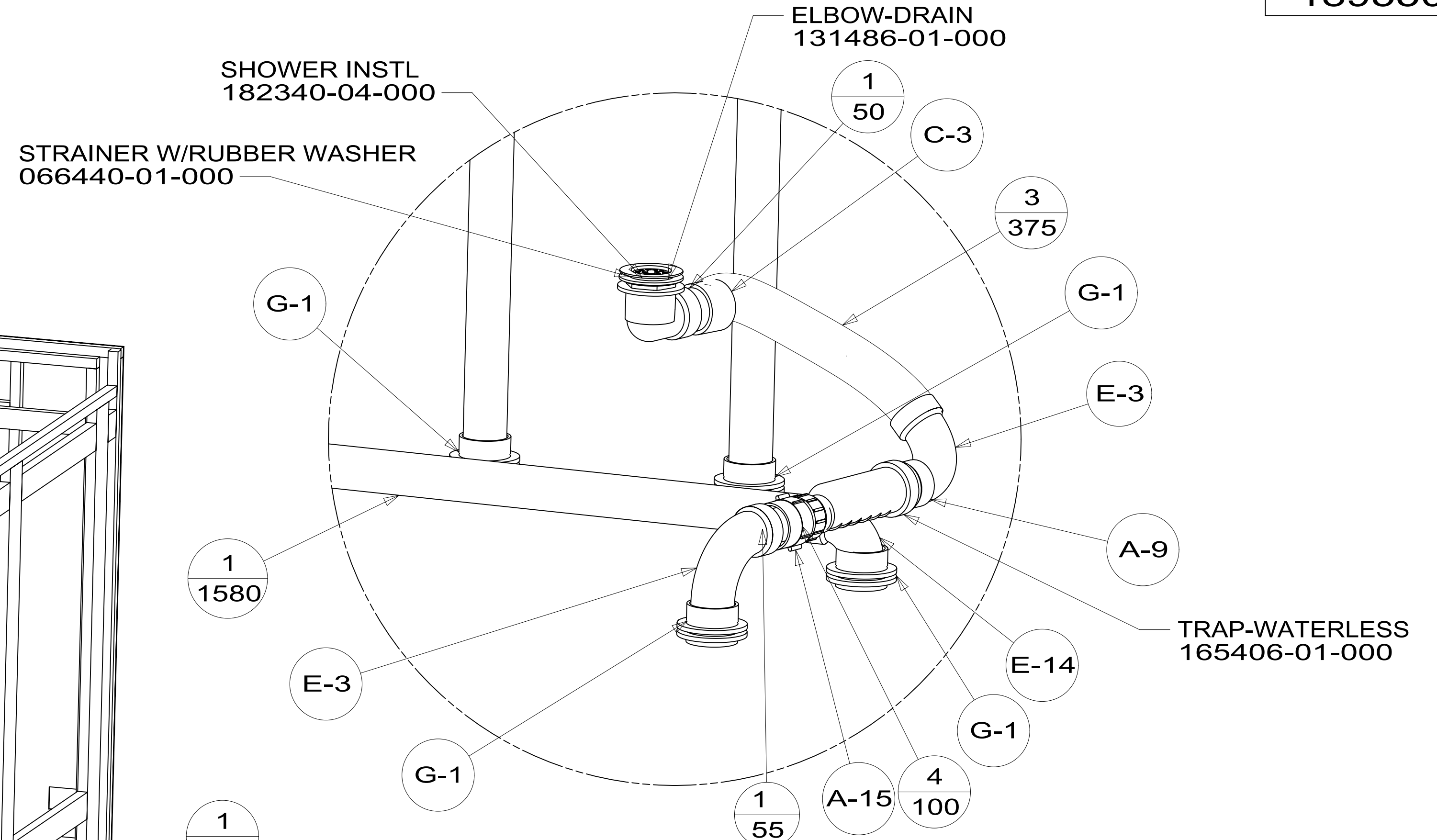
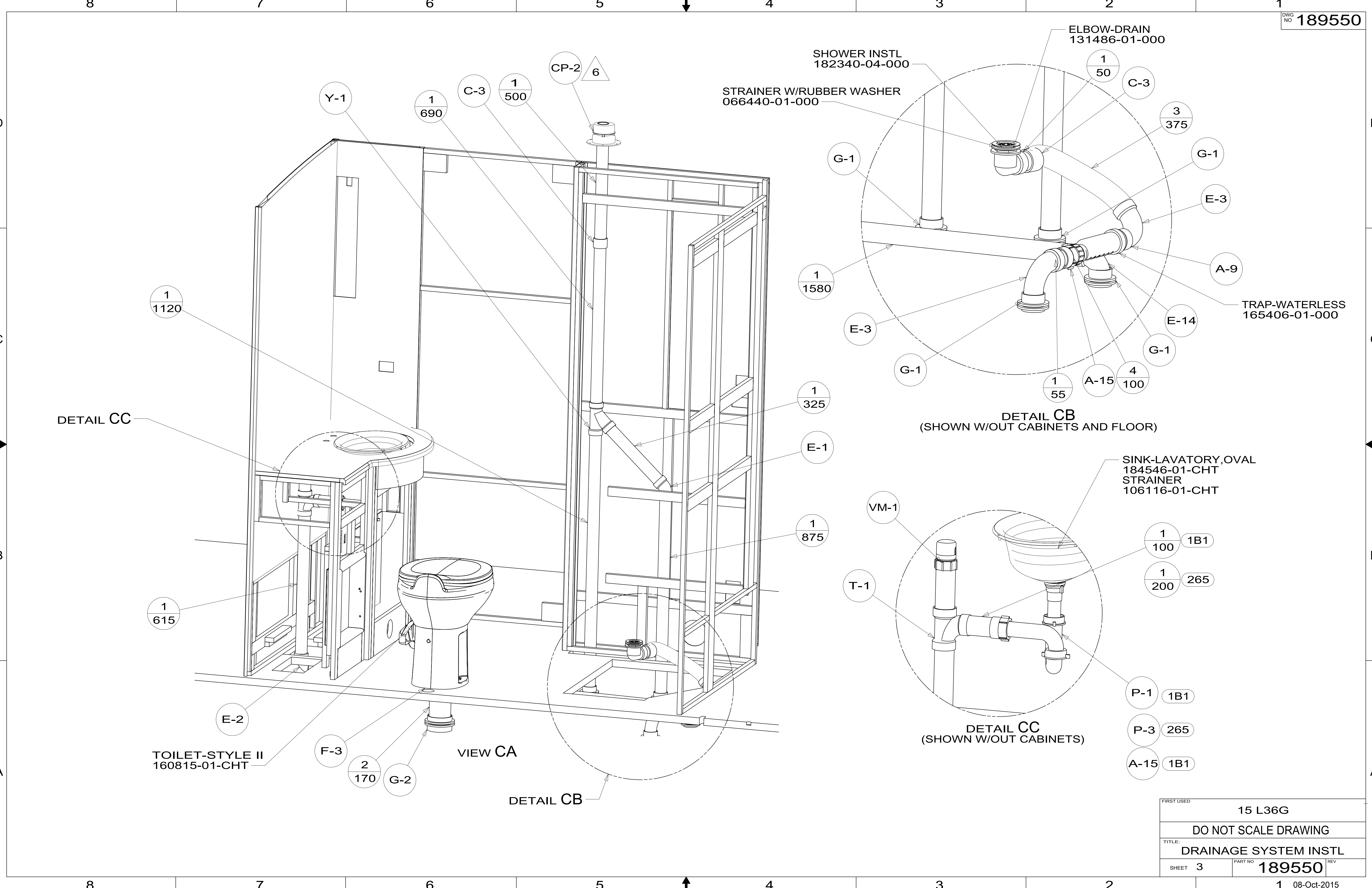
ELBOW
136111-01-000 10

1 60

DETAIL BC

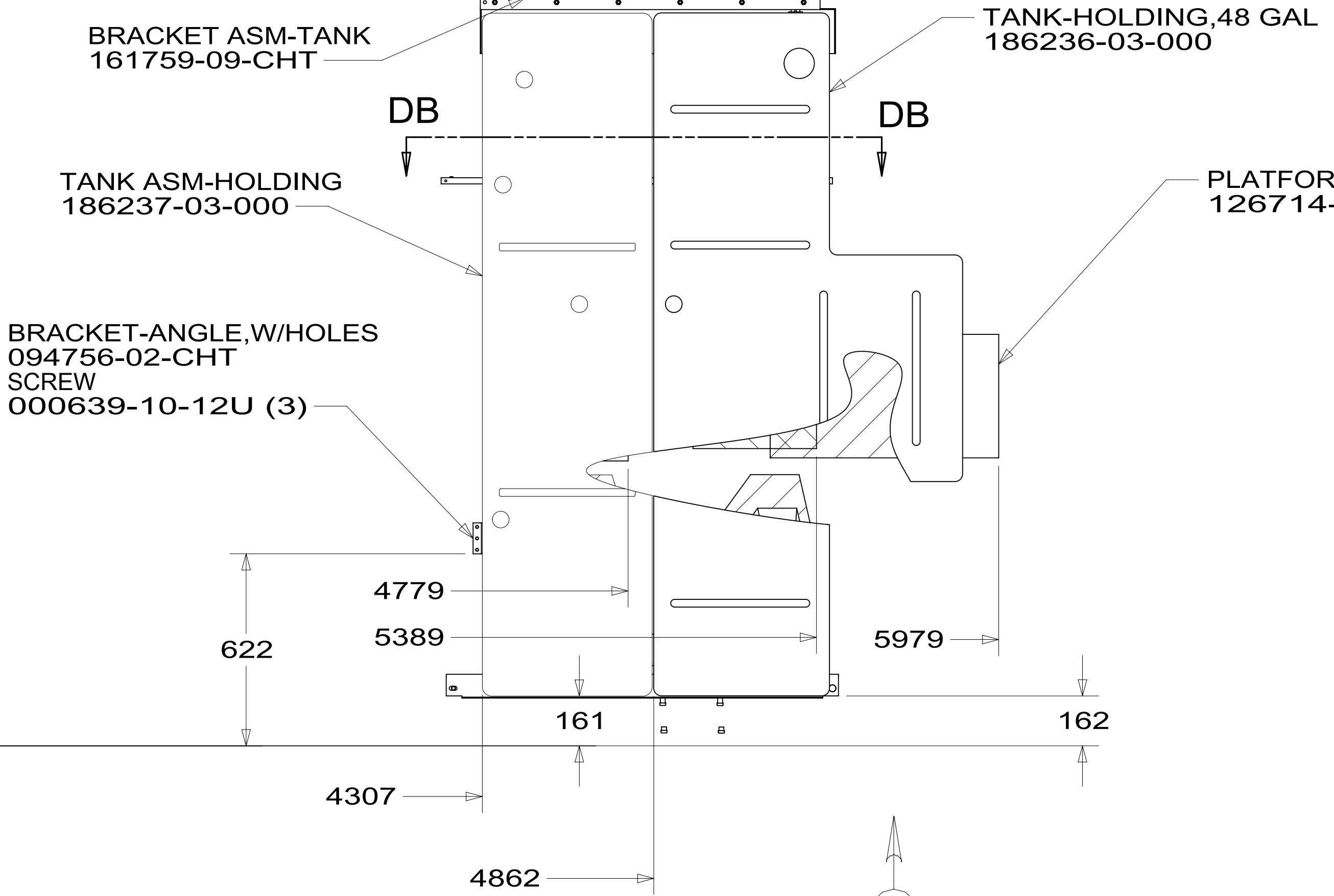
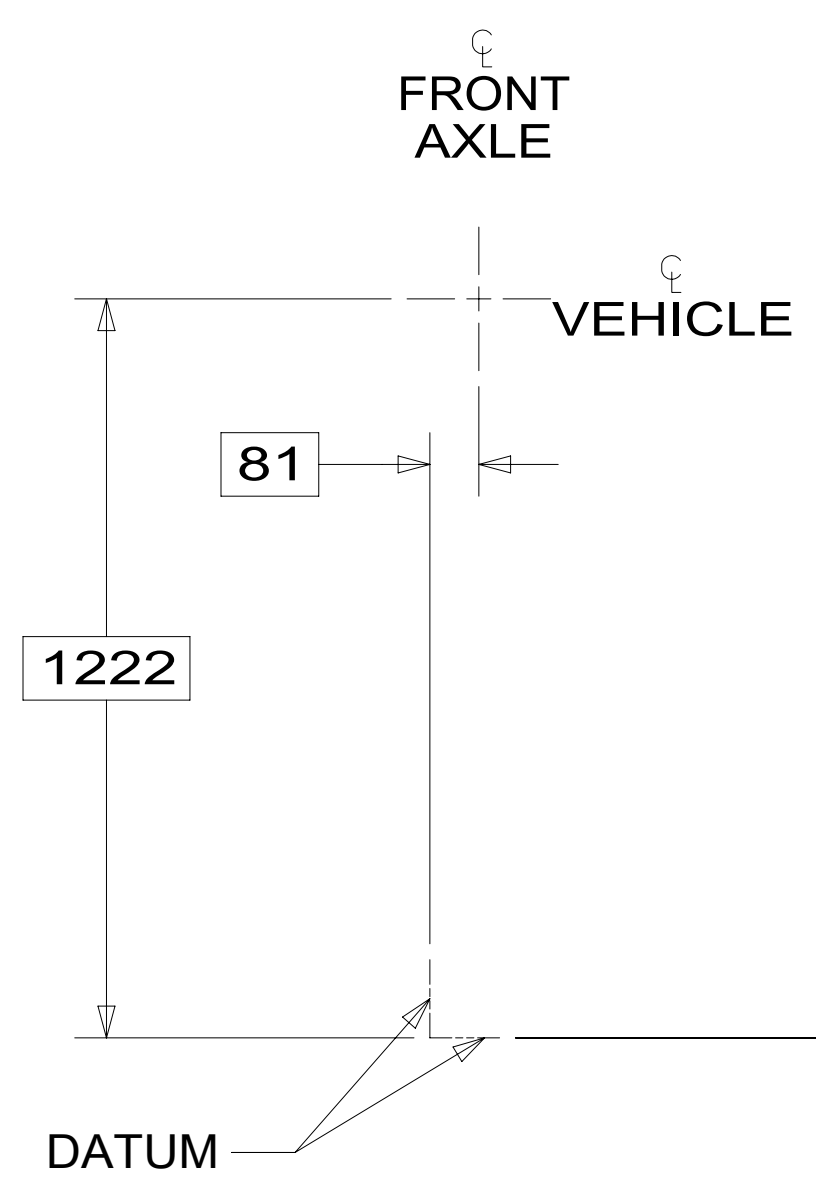
FIRST USED	15 L36G
DO NOT SCALE DRAWING	
TITLE: DRAINAGE SYSTEM INSTL	
SHEET 2	PART NO 189550
REV 1 08-Oct-2015	

189550

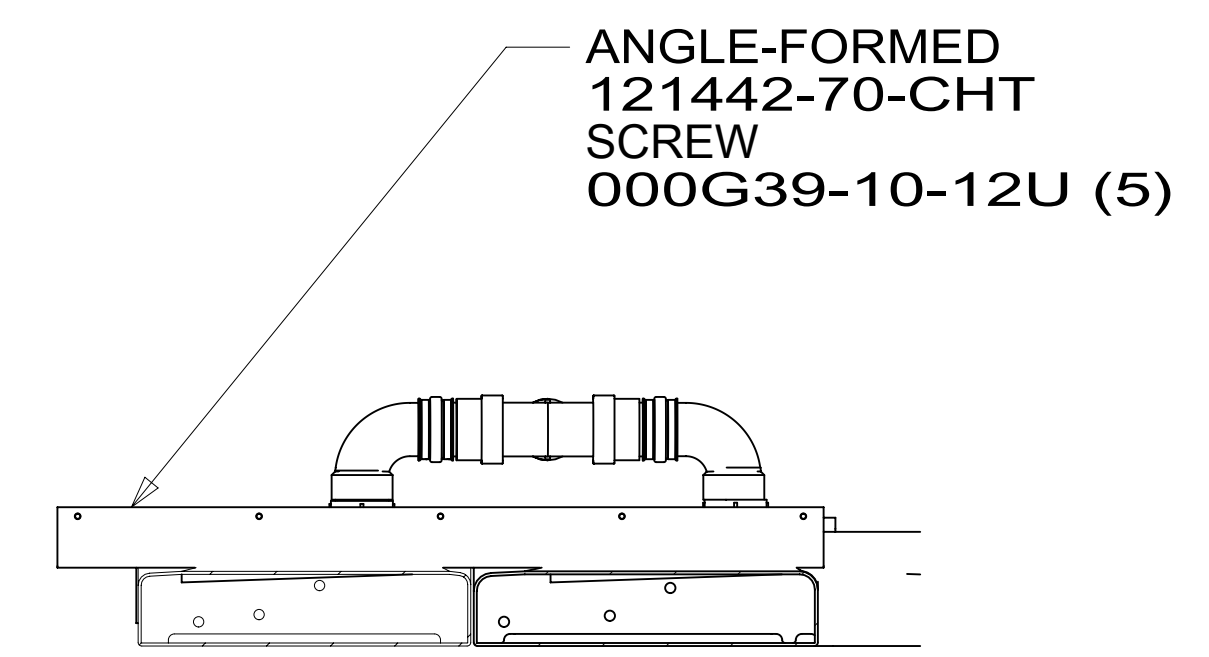
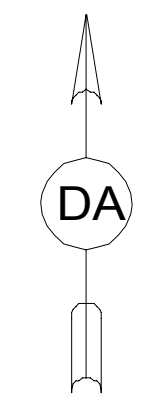


FIRST USED	15 L36G	
TITLE:	DO NOT SCALE DRAWING	
	DRAINAGE SYSTEM INSTL	
SHEET 3	PART NO 189550	REV
	1	08-Oct-2015

189550

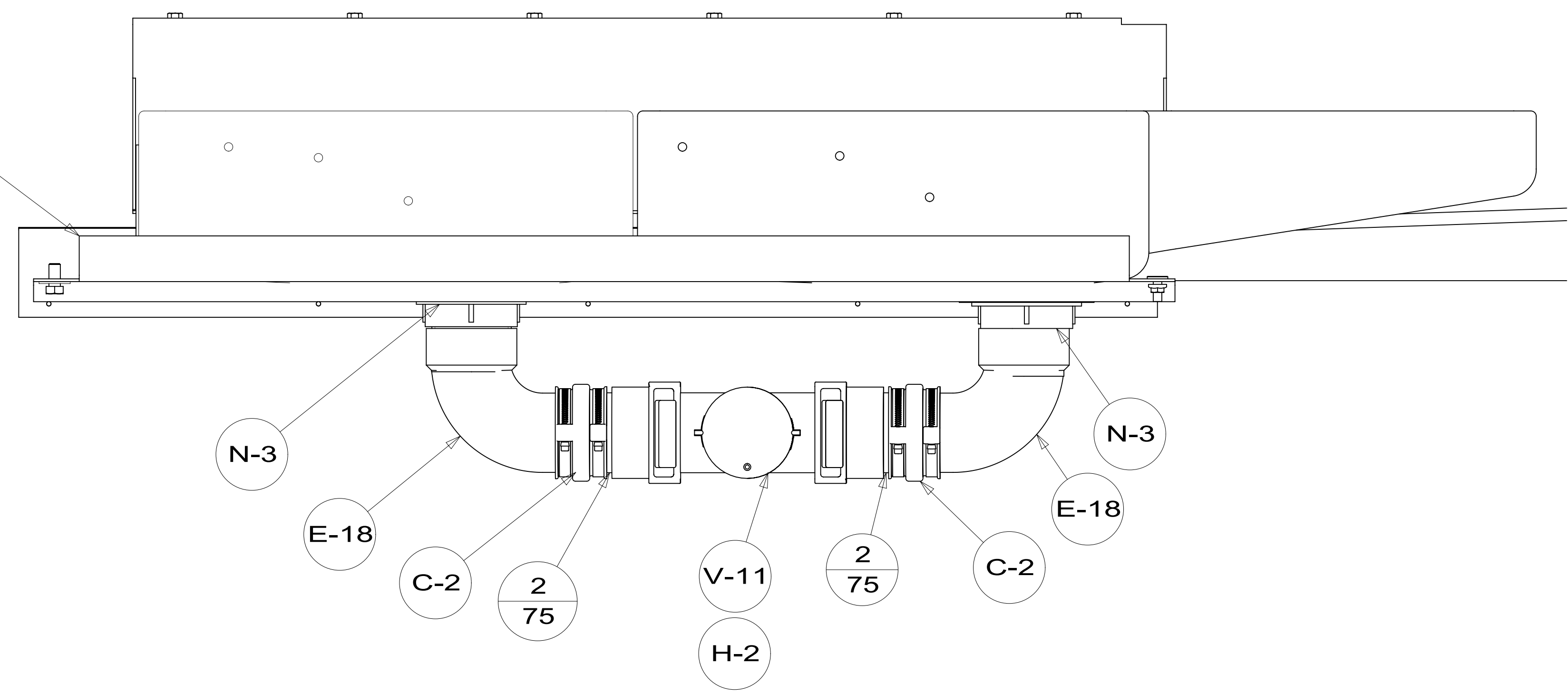


TOP VIEW SHOWING TANKS AND DRAINS



SECTION DB-DB

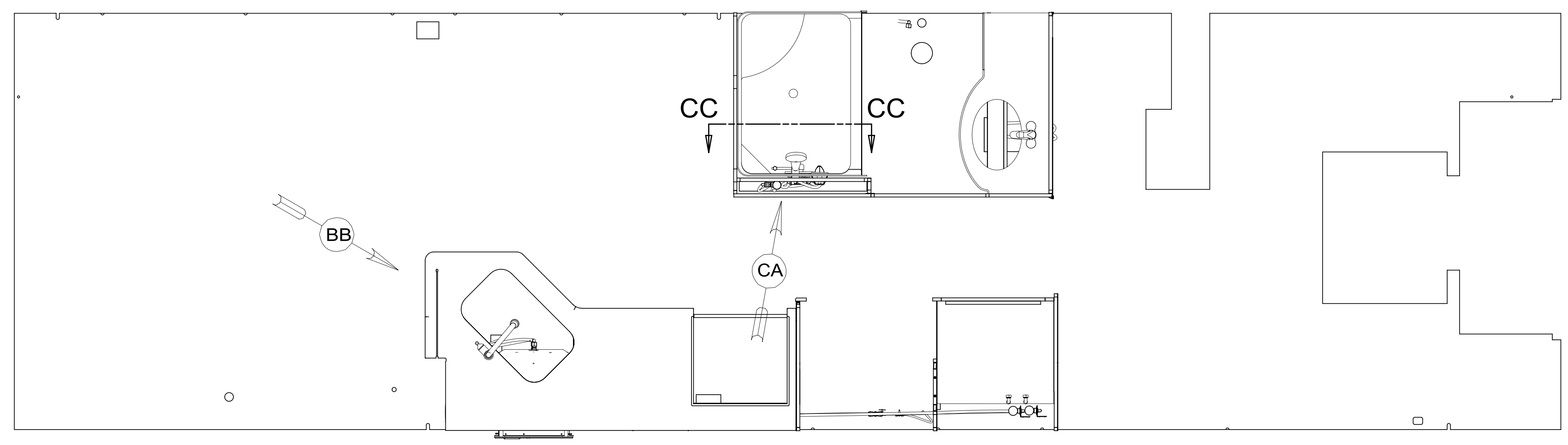
- BRACKET ASM-TANK, HOLDING
162818-03-CHT
- BOLT
000C12-08-16U (2)
- WASHER-LOCK
000E11-08-00U (2)
- WASHER
000E13-22-00U (2)
- NUT
000D39-06-00U (2)



VIEW DA

FIRST USED	15 L36G		
TITLE:	DO NOT SCALE DRAWING		
TITLE:	DRAINAGE SYSTEM INSTL		
SHEET 4	PART NO	189550	REV
	1	08-Oct-2015	

189550



- 12 FOR INSTALLATION USE SILICON-ADHESIVE 131264-05-CHT. APPLY ON TOP OF PLATE, PLACE COVER ON, AND PUT ADHESIVE AROUND COVER.
- 11 VALVE MUST REMAIN OPEN AFTER WATER TEST.
- 10 INSTALL FAUCET W/OUT BASEPLATE.
- 9 ELBOW TO BE TURN 45° BELOW HORIZONTAL LINE.
- 8. ALL CRIMP FITTINGS TO 1/2" PEX TUBING REQUIRE 1/2" CLAMP 140171-03-000.
- 7. ALL CRIMP FITTINGS TO 5/8" PEX TUBING REQUIRE 5/8" CLAMP 140171-04-000.
- 6 LABEL HOT AND COLD SUPPLY TUBES AND TAPE FITTING TO TUBE BEFORE CABINET SET TO PREVENT MOVEMENT.
- 5 ADD PIPE WRAP (LADDER SCRAP 110157-02-000) INSULATION.
- 4 ADD TEFLON TAPE 010405-02-000.
- 3. ALL TUBING TO BE SECURED AT 1200 INTERVALS MAXIMUM WITH CLAMP 010495-01-000 AND SCREW 000G67-10-12U OR EQUIVALENT.
- 2. TUBING TO BE INSTALLED WITH SUFFICIENT SLOPE TO PROVIDE DRAINAGE TO NEAREST VALVE.
- 1. PLASTIC FITTINGS TO BE SEALED WITH SEALANT 084456-01-000.

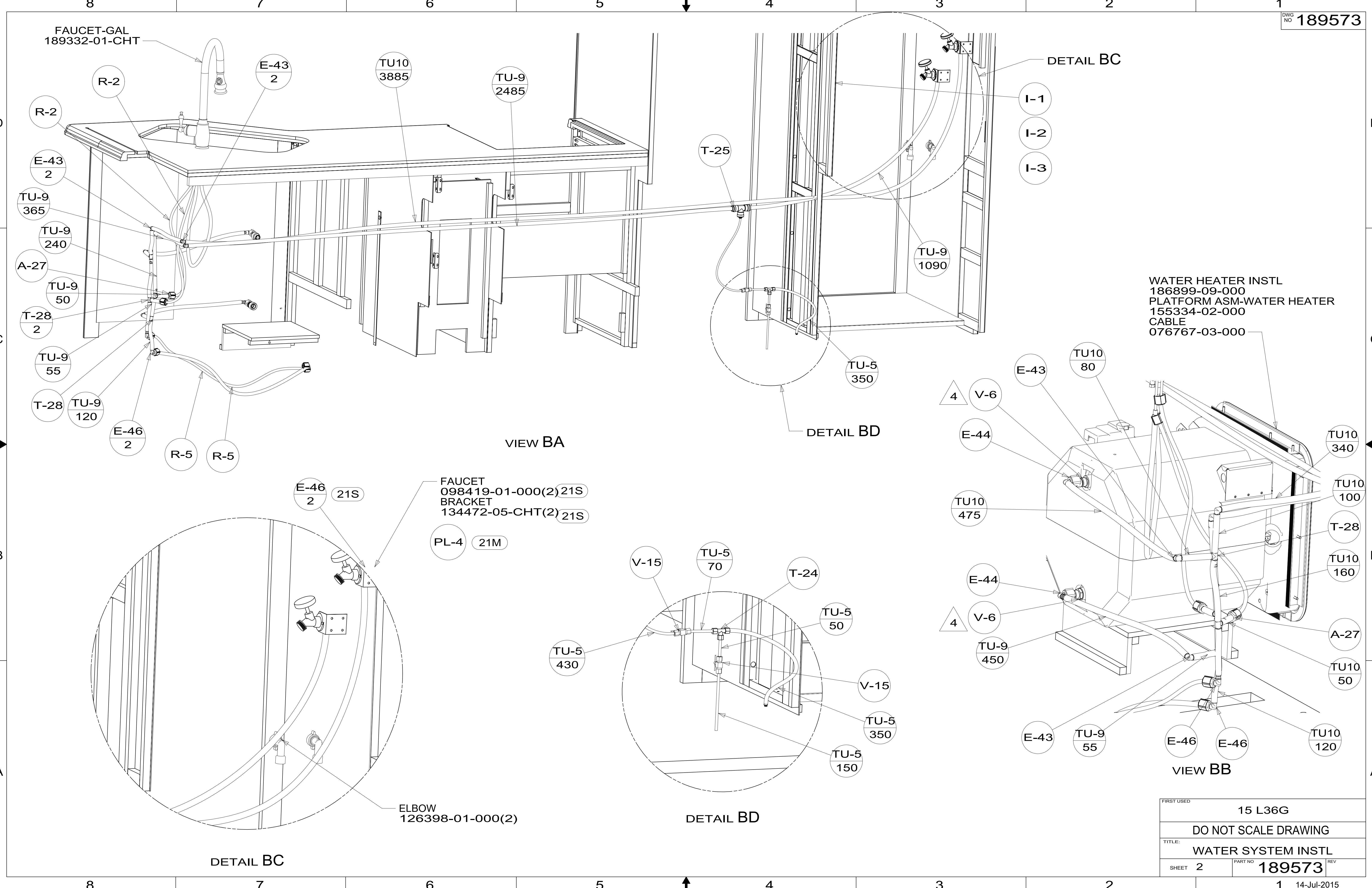
- 21S WASHER & DRYER-PAIR
- 21M WASHER/DRYER PREP

WINNEBAGO INDUSTRIES, INC. COPYRIGHT 2014

DFT-ORIG	ORIG. DATE
CHKR	ALL DIMENSIONS ARE IN MILLIMETERS
P.E.	
M.E.	FIRST USED
DSNR	15 L36G
UNSPECIFIED TOLERANCES ARE:	
WHOLE DIM (X)	: 3
ONE-PLACE (X.X)	: 1.5
TWO-PLACE (X.XX)	: 0.50
ANGLE	: 1°
THIRD ANGLE PROJECTION	
DO NOT SCALE DRAWING	REFER TO ES0018 FOR FASTENER TIGHTENING GUIDELINES
TITLE: WATER SYSTEM INSTL	
SHEET 1 OF 5	PART NO 189573 REV
REF:	1 14-Jul-2015

FOR WATER CALLOUTS SEE DWG NO 116230-01-000

*189573 *A



FAUCET-GAL
189332-01-CHT

DETAIL BC

VIEW BA

DETAIL BD

WATER HEATER INSTL
186899-09-000
PLATFORM ASM-WATER HEATER
155334-02-000
CABLE
076767-03-000

FAUCET
098419-01-000(2) 21S
BRACKET
134472-05-CHT(2) 21S

VIEW BB

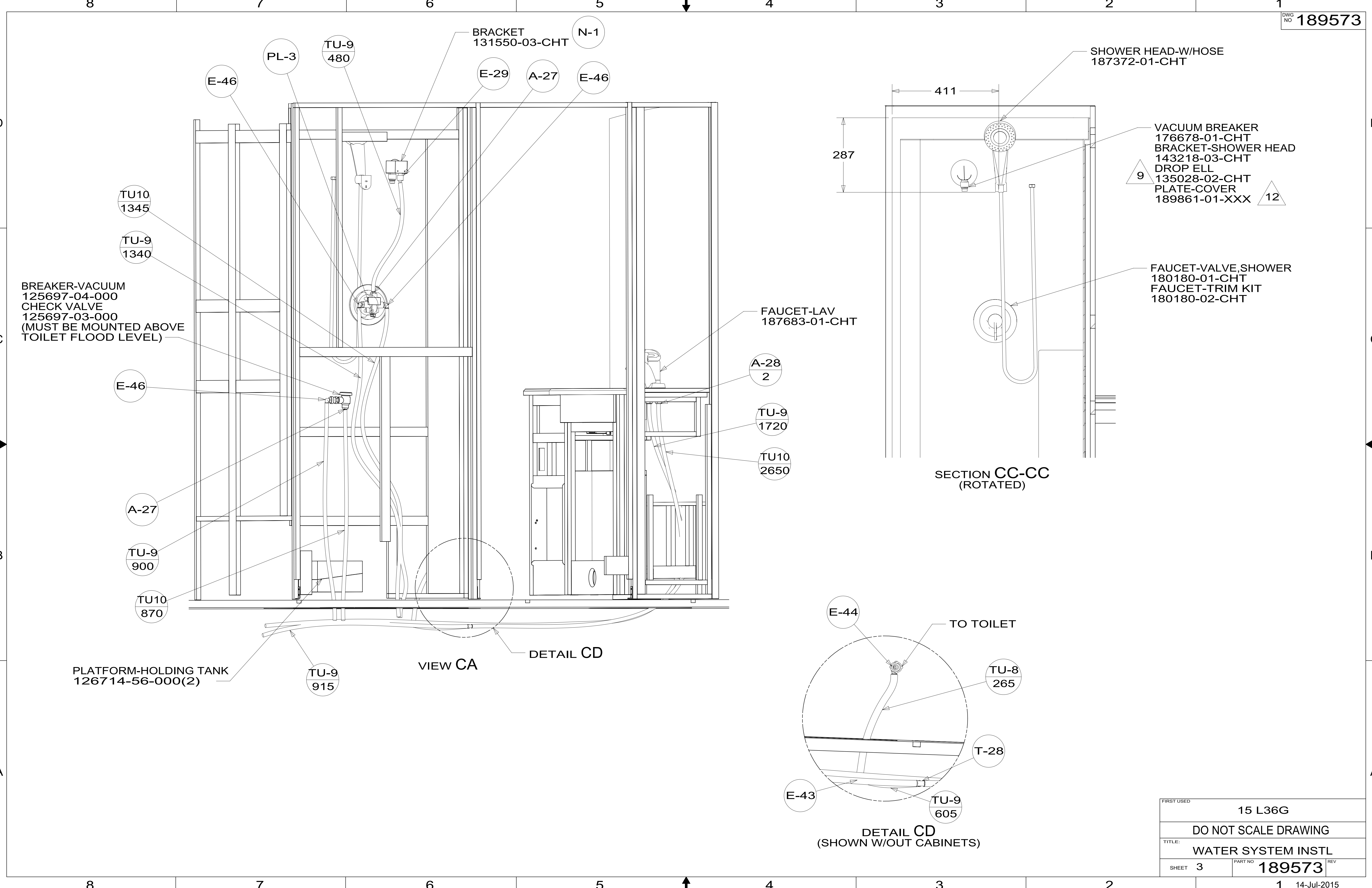
DETAIL BD

DETAIL BC

ELBOW
126398-01-000(2)

FIRST USED	15 L36G	
TITLE:	DO NOT SCALE DRAWING	
	WATER SYSTEM INSTL	
SHEET 2	PART NO 189573	REV

189573



BREAKER-VACUUM
125697-04-000
CHECK VALVE
125697-03-000
(MUST BE MOUNTED ABOVE
TOILET FLOOD LEVEL)

PLATFORM-HOLDING TANK
126714-56-000(2)

VACUUM BREAKER
176678-01-CHT
BRACKET-SHOWER HEAD
143218-03-CHT
DROP ELL
135028-02-CHT
PLATE-COVER
189861-01-XXX

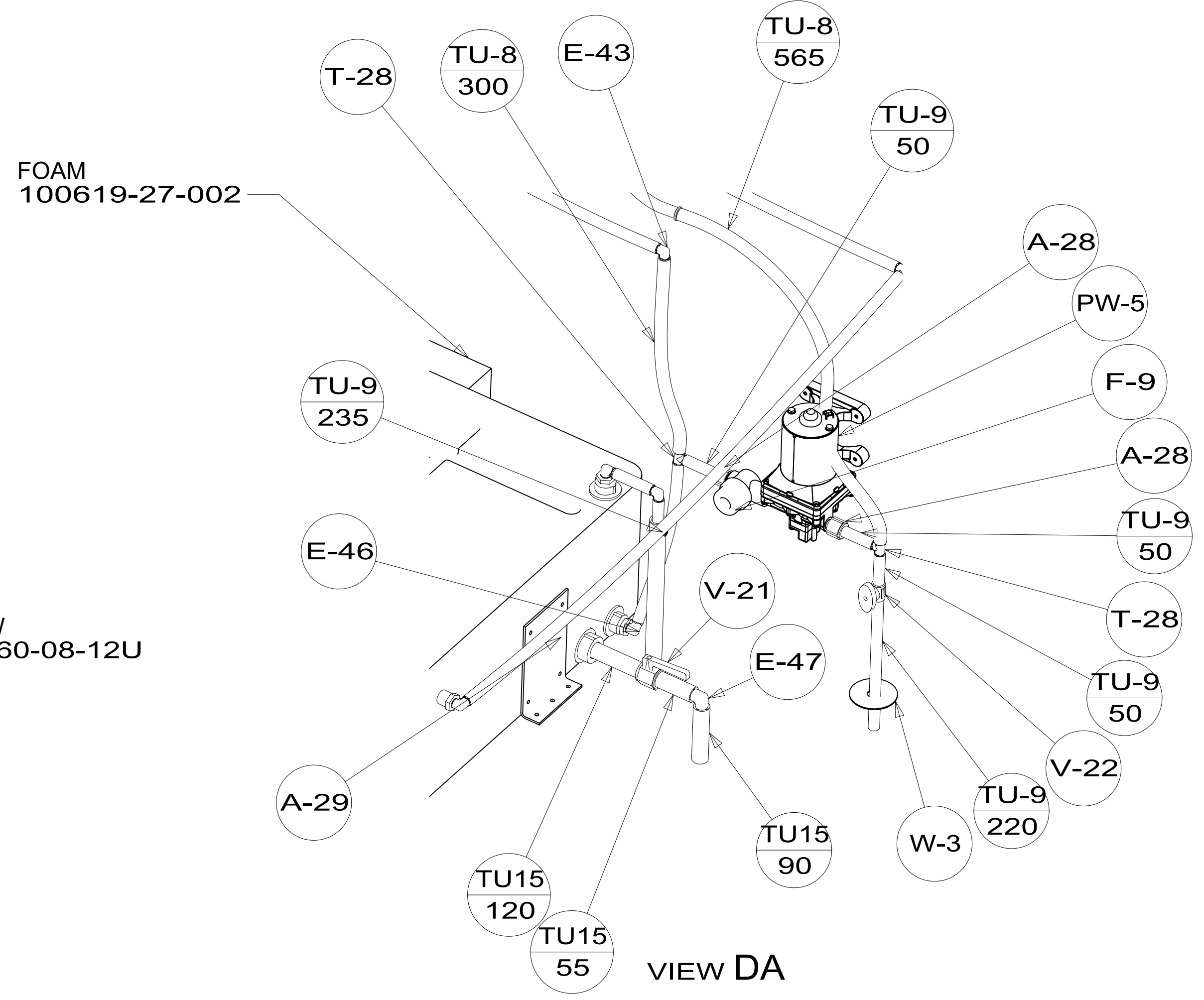
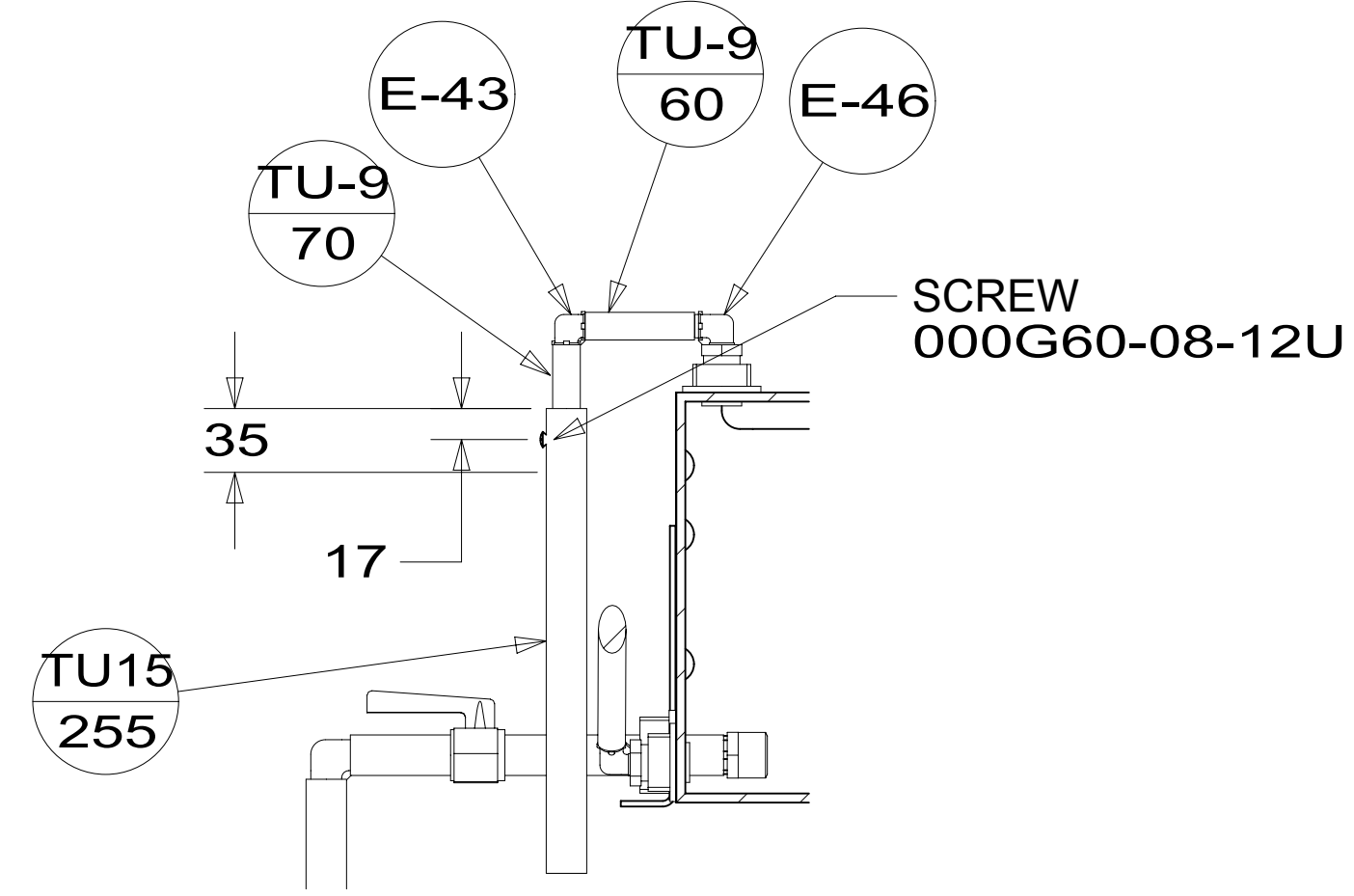
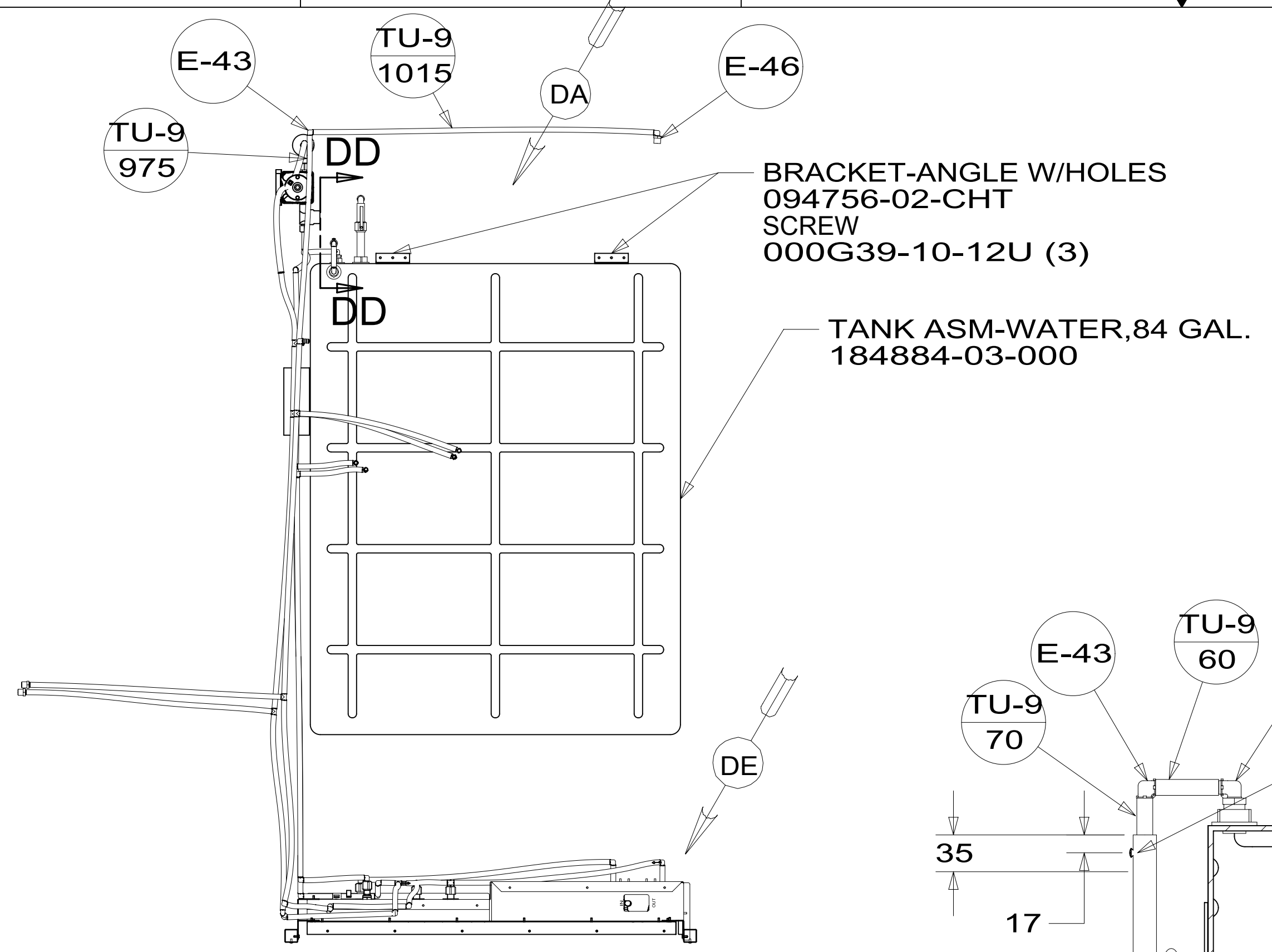
FAUCET-VALVE, SHOWER
180180-01-CHT
FAUCET-TRIM KIT
180180-02-CHT

TO TOILET

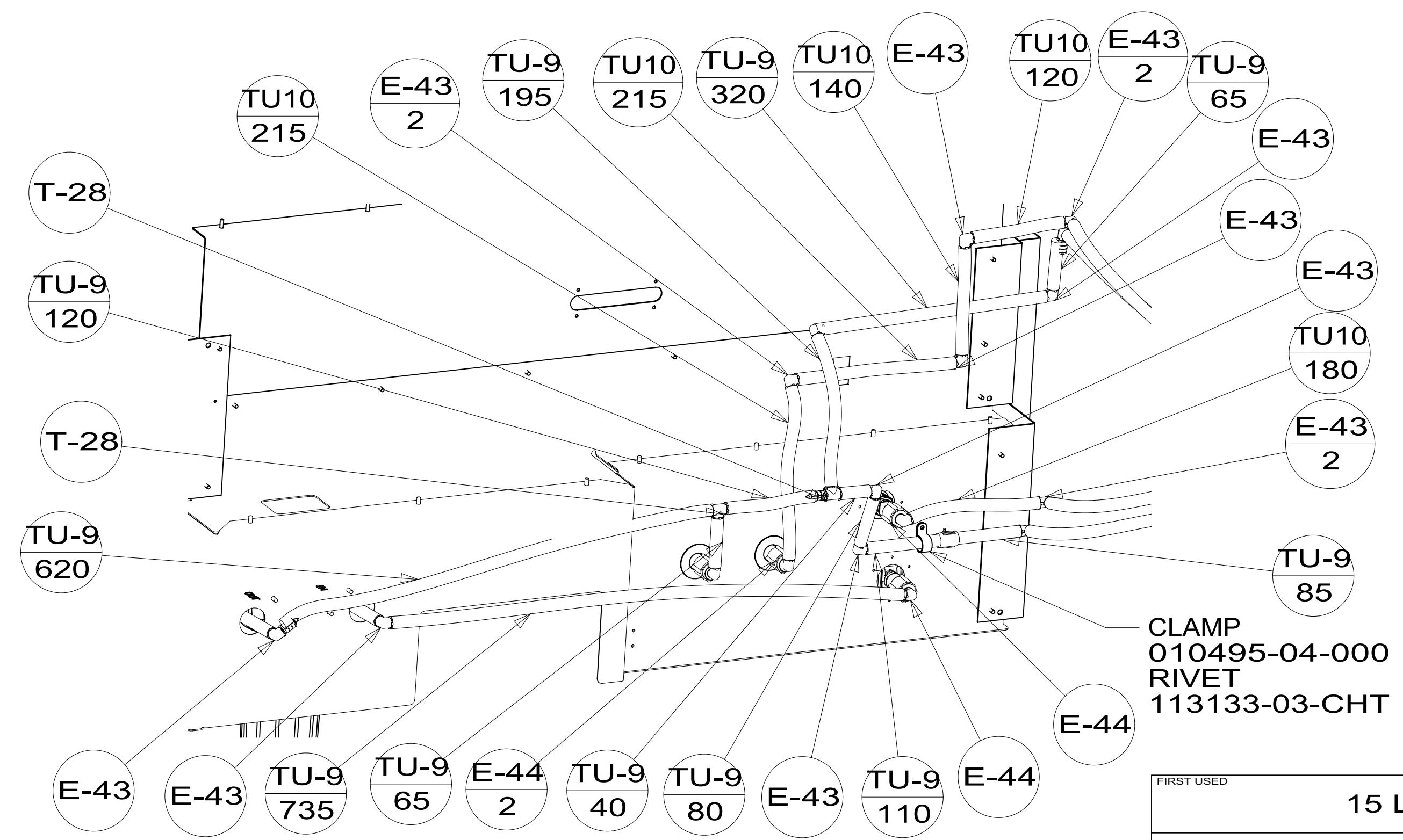
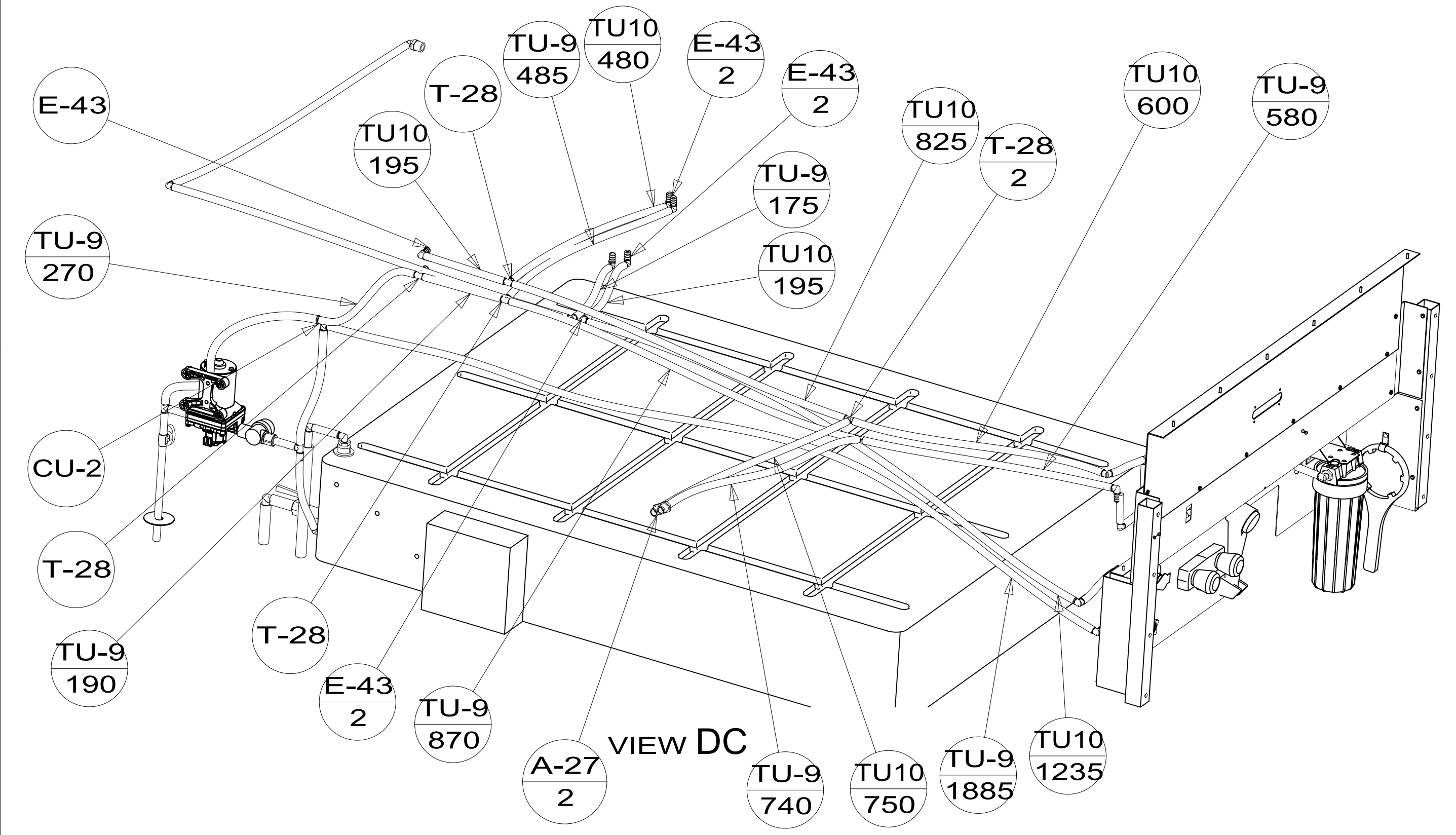
DETAIL CD
(SHOWN W/OUT CABINETS)

FIRST USED	15 L36G		
TITLE:	DO NOT SCALE DRAWING		
SHEET	3	PART NO	189573
		REV	1
			14-Jul-2015

*189573 *A

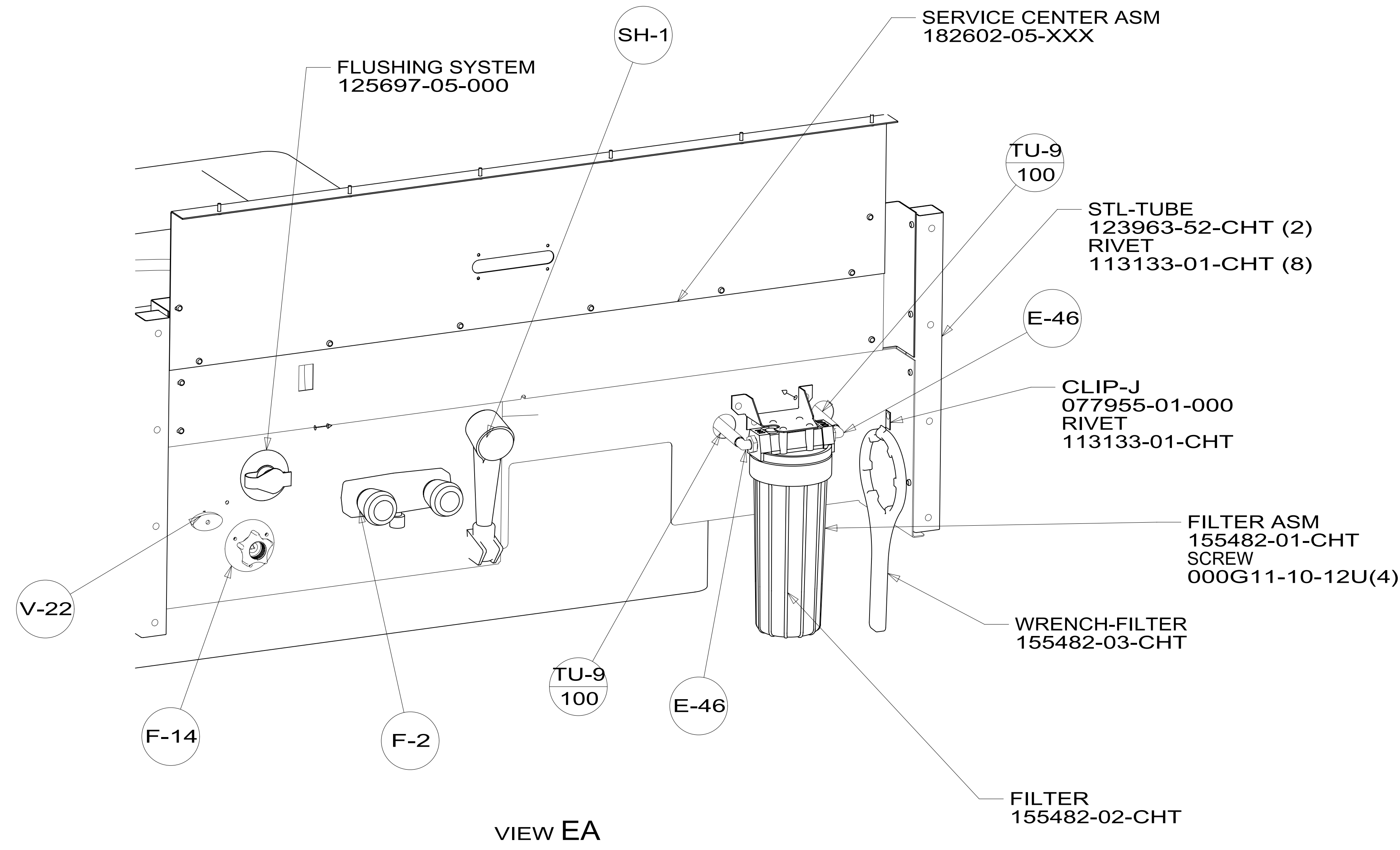


VIEW SHOWING LINE UNDER FLOOR



FIRST USED	15 L36G	
TITLE:	DO NOT SCALE DRAWING	
SHEET 4	PART NO	189573
	REV	1
14-Jul-2015		

189573



FIRST USED	15 L36G		
DO NOT SCALE DRAWING			
TITLE:	WATER SYSTEM INSTL		
SHEET 5	PART NO	189573	REV
		1	14-Jul-2015

*189573 *A