

9. SEE DRAWING 061607 FOR INSTALLATION OF GROMMETS.
8. SECURE DRAINAGE PIPES TO CABINET USING WIRE TIE 108046-02-000, AND SCREW 000G67-10-12U AT INTERVALS OF NOT OF NOT MORE THAN 4 FEET APART.
7. SECURE VENT PIPE TO FLOOR WITH CLAMP 062401-02-000 (2), SCREW 000G67-10-12U (2), BRACKET 136878-01-CHT (2).
6. VENT PIPE MUST PROJECT 51 MIN AND 64 MAX ABOVE ROOF FOR PROPER FIT AND FUNCTION. ADD S-1 (116666-01-CHT SEAL-VENT PIPE) AROUND PIPE ON ROOF BEFORE VENT CAP IS INSTALLED.
5. SEAL AROUND SHOWER WITH SILICONE.
4. USE SMOOTH PLUMBERS PUTTY 167459-01-000 TO SEAL STRAINER (0.2 PER STRAINER).
3. ALL PIPE AND FITTINGS TO BE ASSEMBLED WITH SOLVENT 004020-01-000 (USA), 004020-02-000 (CAN)
2. SLOPE OF TRAP ARM MUST BE 6 PER 305 mm.
1. SLOPE OF HORIZONTAL PIPING TO BE MINIMUM OF 3 PER 305 mm.

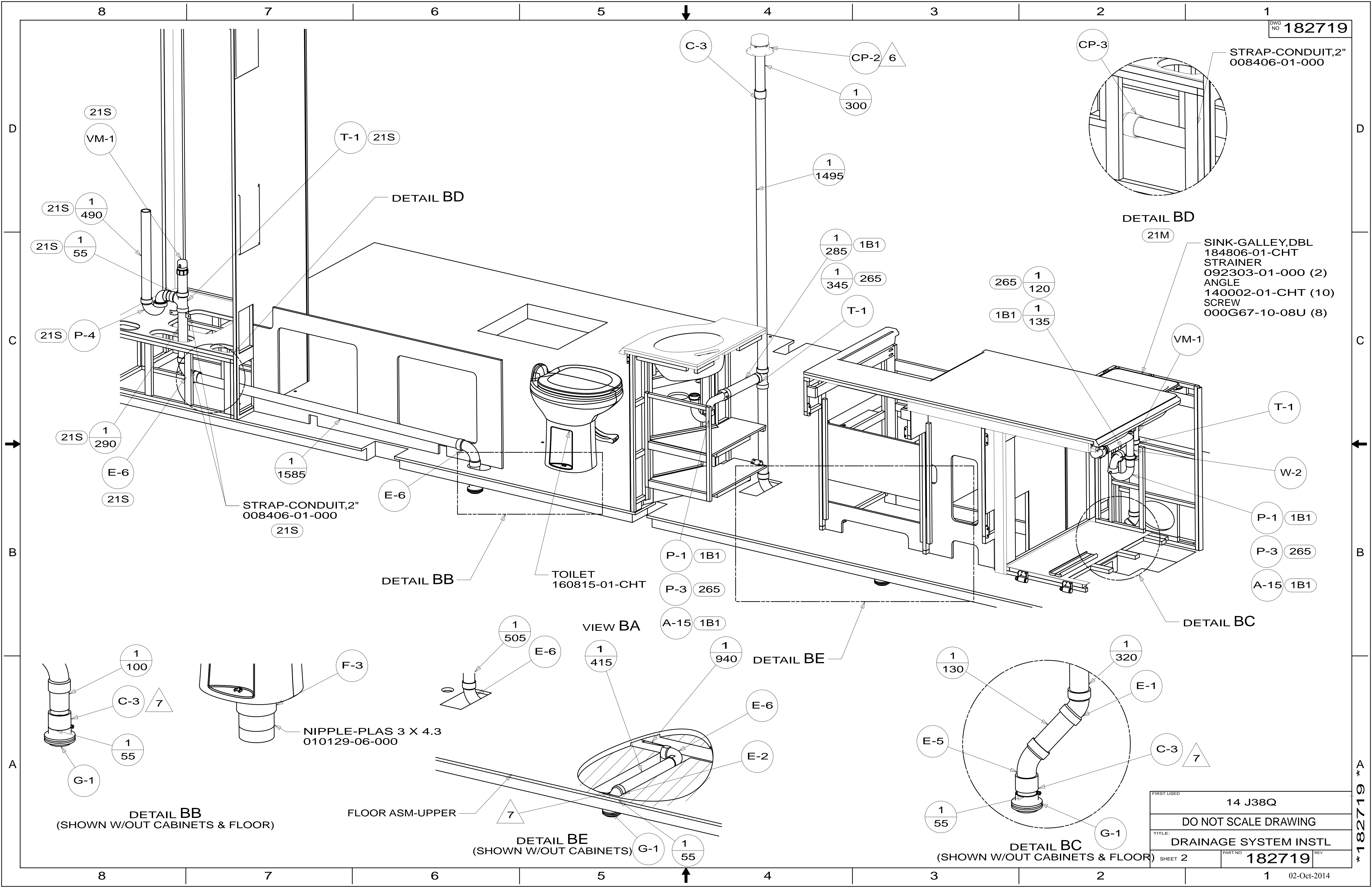
- 21M WASHER/DRYER PREP
- 21S WASHER & DRYER-PAIR

**WINNEBAGO** INDUSTRIES, INC. COPYRIGHT 2014

DFT-ORIG	ORIG. DATE
CHKR	ALL DIMENSIONS ARE IN MILLIMETERS
P.E.	
M.E.	FIRST USED
DSNR	14 J38Q
UNSPECIFIED TOLERANCES ARE:	
WHOLE DIM (X)	: 3
ONE-PLACE (X.X)	:
TWO-PLACE (X.XX)	:
ANGLE	:
THIRD ANGLE PROJECTION	
DO NOT SCALE DRAWING	REFER TO ES0018 FOR FASTENER TIGHTENING GUIDELINES
TITLE: DRAINAGE SYSTEM INSTL	
SHEET 1 OF 4	PART NO 182719 REV
REF:	1 02-Oct-2014

FOR DRAINAGE CALLOUTS SEE DWG NO 116229-01-000

\* 182719 \* A



STRAP-CONDUIT,2" 008406-01-000

DETAIL BD

SINK-GALLEY,DBL 184806-01-CHT STRAINER 092303-01-000 (2) ANGLE 140002-01-CHT (10) SCREW 000G67-10-08U (8)

STRAP-CONDUIT,2" 008406-01-000

TOILET 160815-01-CHT

NIPPLE-PLAS 3 X 4.3 010129-06-000

DETAIL BB (SHOWN W/OUT CABINETS & FLOOR)

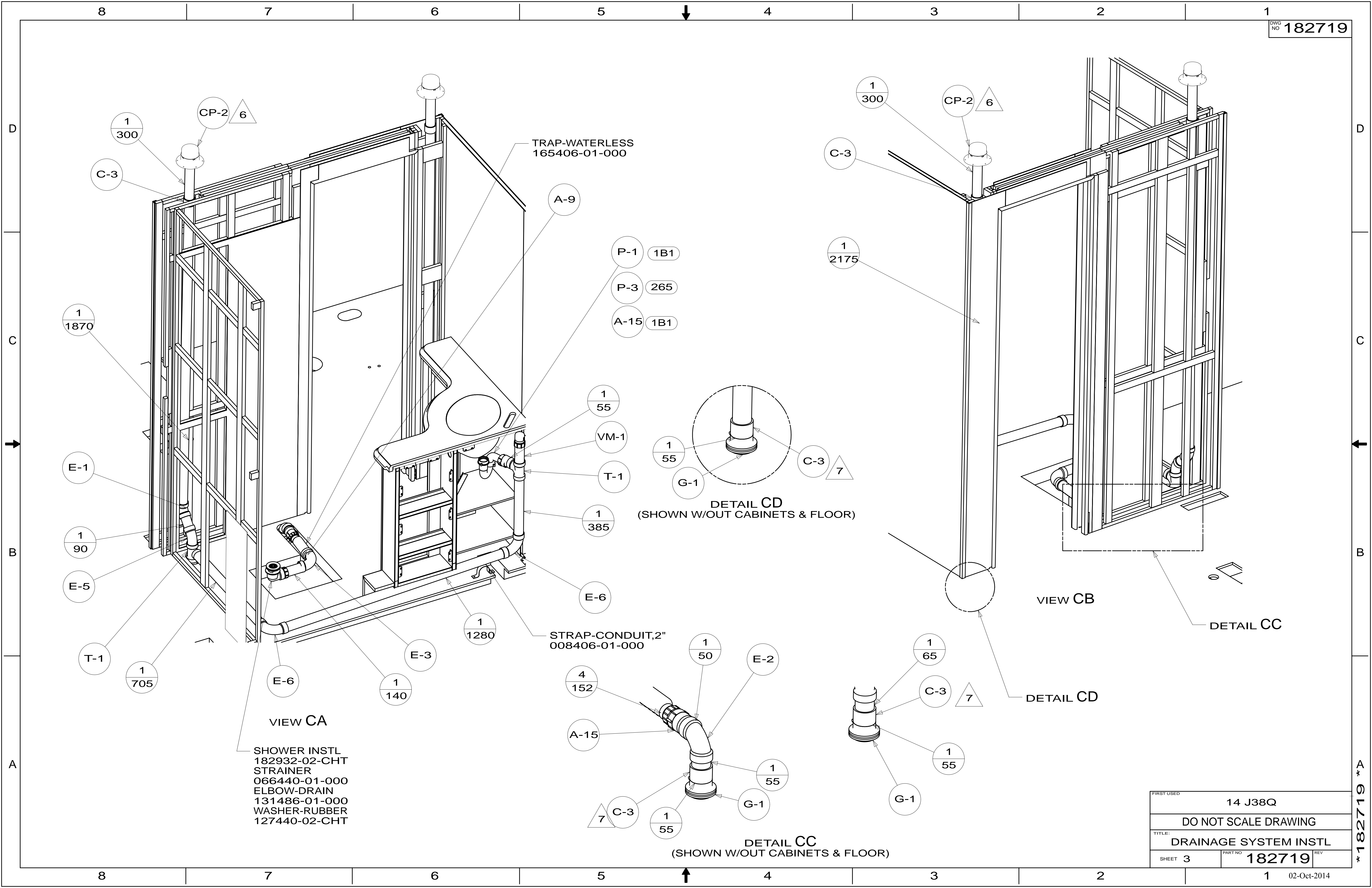
DETAIL BE (SHOWN W/OUT CABINETS)

DETAIL BC (SHOWN W/OUT CABINETS & FLOOR)

FLOOR ASM-UPPER

FIRST USED	14 J38Q
DO NOT SCALE DRAWING	
TITLE:	DRAINAGE SYSTEM INSTL
SHEET 2	PART NO 182719 REV
02-Oct-2014	

\*182719\*\*A



TRAP-WATERLESS  
165406-01-000

DETAIL CD  
(SHOWN W/OUT CABINETS & FLOOR)

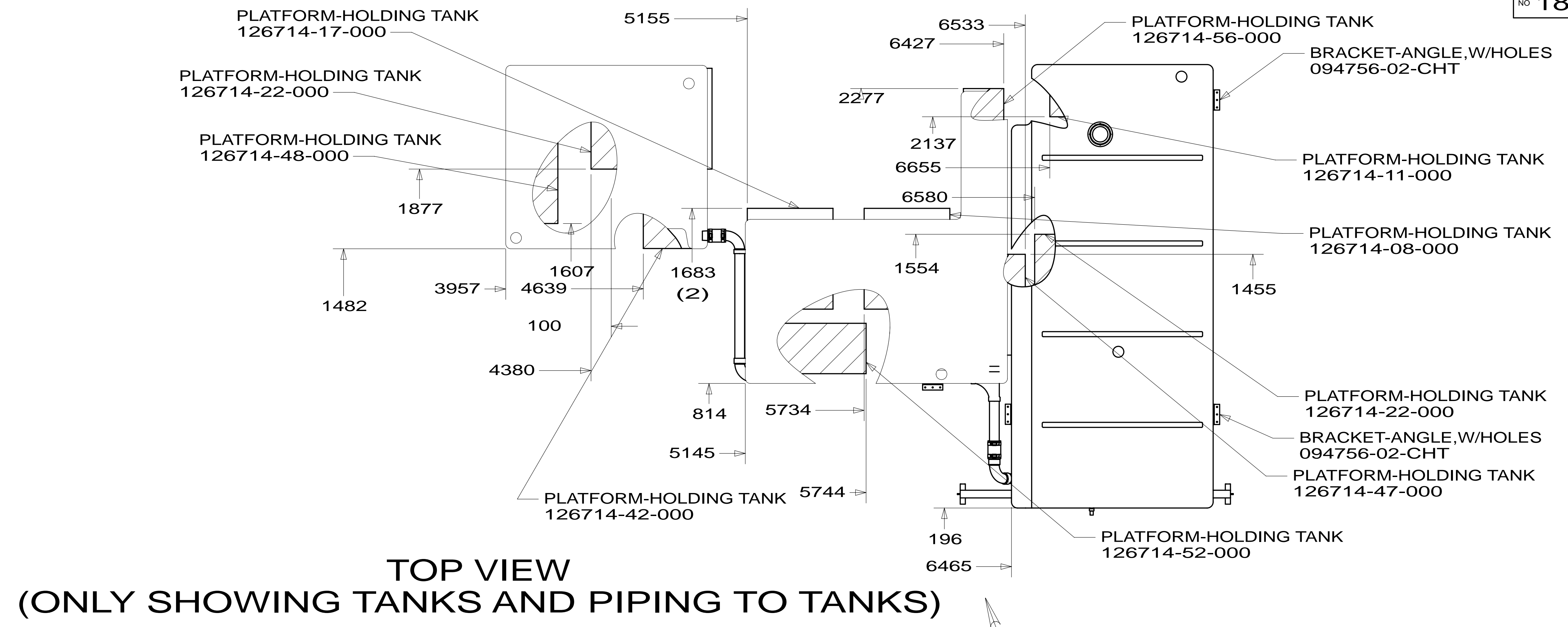
DETAIL CC  
(SHOWN W/OUT CABINETS & FLOOR)

STRAP-CONDUIT, 2"  
008406-01-000

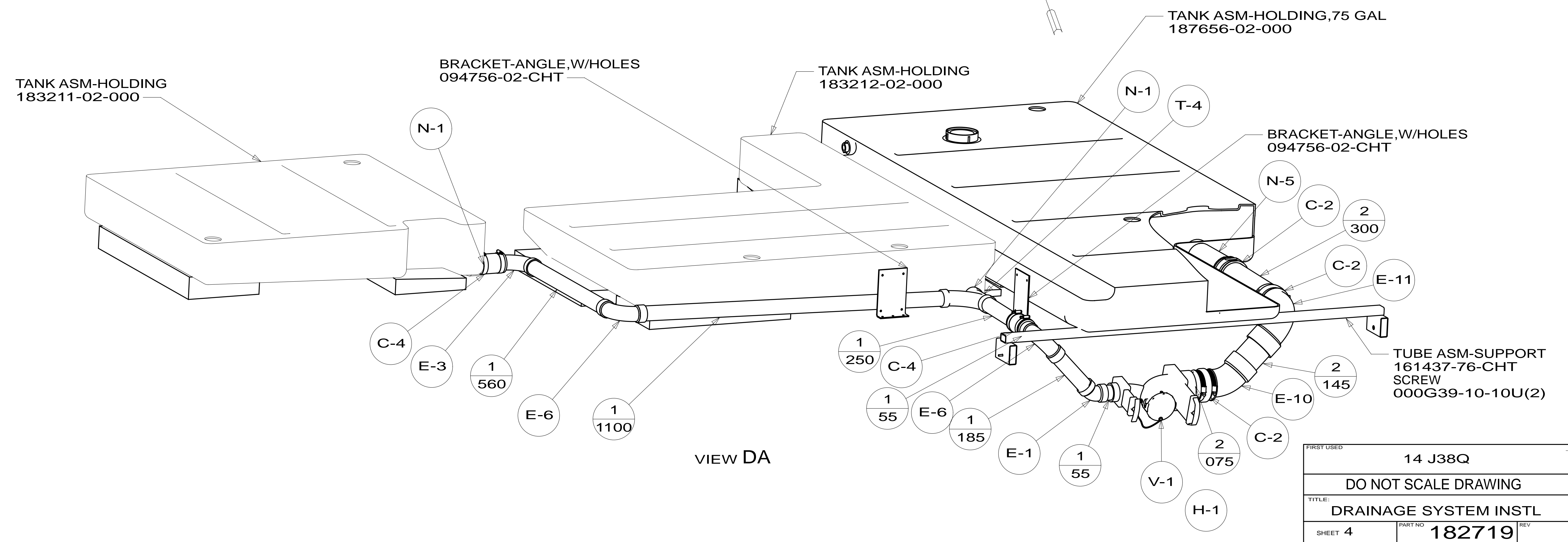
SHOWER INSTL  
182932-02-CHT  
STRAINER  
066440-01-000  
ELBOW-DRAIN  
131486-01-000  
WASHER-RUBBER  
127440-02-CHT

FIRST USED	14 J38Q	
DO NOT SCALE DRAWING		
TITLE: DRAINAGE SYSTEM INSTL		
SHEET 3	PART NO 182719	REV
		02-Oct-2014

\*182719 \*A



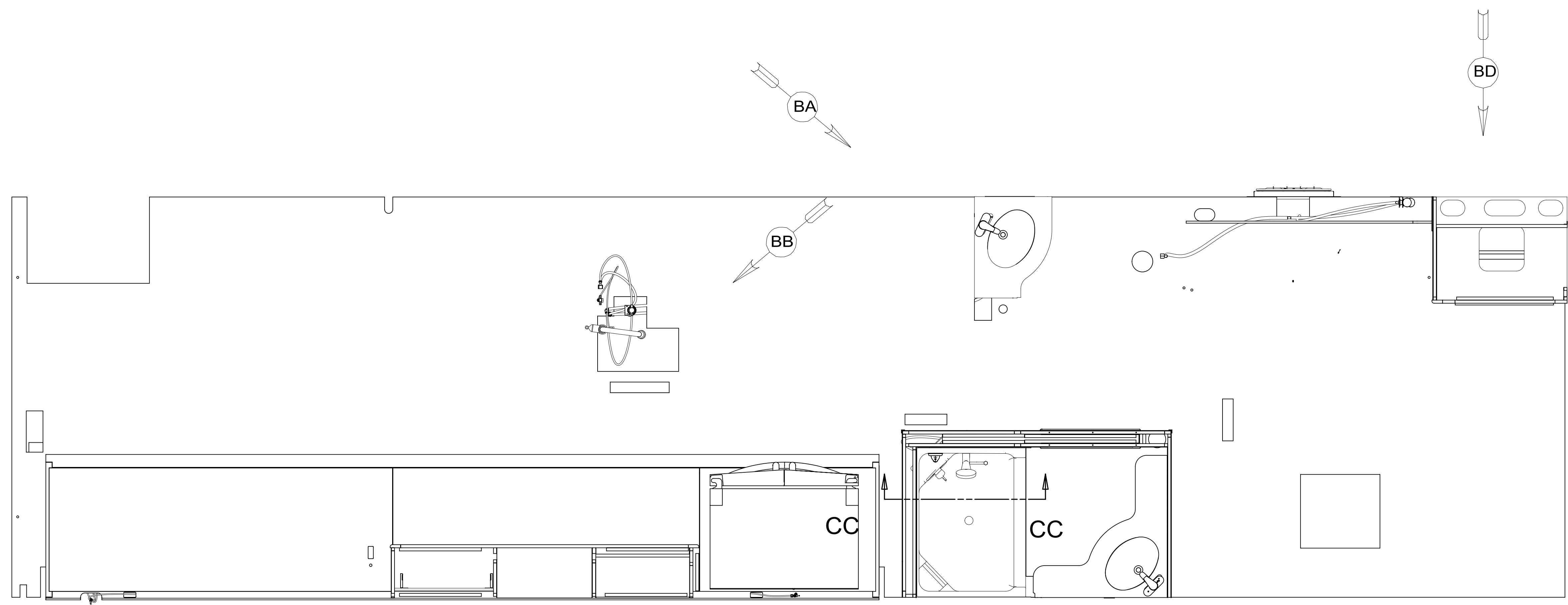
TOP VIEW  
(ONLY SHOWING TANKS AND PIPING TO TANKS)



FIRST USED	14 J38Q	
TITLE:	DO NOT SCALE DRAWING	
TITLE:	DRAINAGE SYSTEM INSTL	
SHEET 4	PART NO 182719	REV
		02-Oct-2014

\* 182719 \* A





- NOTES:
1. PLASTIC FITTINGS TO BE SEALED WITH SEALANT 084456-01-000.
  2. TUBING TO BE INSTALLED WITH SUFFICIENT SLOPE TO PROVIDE DRAINAGE TO NEAREST VALVE.
  3. ALL TUBING TO BE SECURED AT 1200 INTERVALS MAXIMUM WITH CLAMP 010495-01-000 AND SCREW 000G67-10-12U OR EQUIVALENT.
  4. ADD TEFLON TAPE 010405-02-000.
  5. ADD PIPE WRAP (LADDER SCRAP 110157-02-000) INSULATION.
  6. LABEL HOT AND COLD SUPPLY TUBES AND TAPE FITTING TO TUBE BEFORE CABINET SET TO PREVENT MOVEMENT.
  7. ALL CRIMP FITTINGS TO 5/8" FLEX TUBING REQUIRE 5/8" CLAMP 140171-04-000.
  8. ALL CRIMP FITTINGS TO 1/2" PEX TUBING REQUIRE 1/2" CLAMP 140171-03-000.
  9. FLUSHING SYSTEM REQUIRES 125697-06-000 INSTRUCTION SHEET.
  10. ALL CRIMP FITTINGS TO 3/4" PEX TUBING REQUIRE 3/4" CLAMP 140171-05-000.
  11. INSTALL GALLEY FAUCET SO EXTREME ENDS OF FAUCET SWING WILL NOT DRIP ON COUNTERTOP.

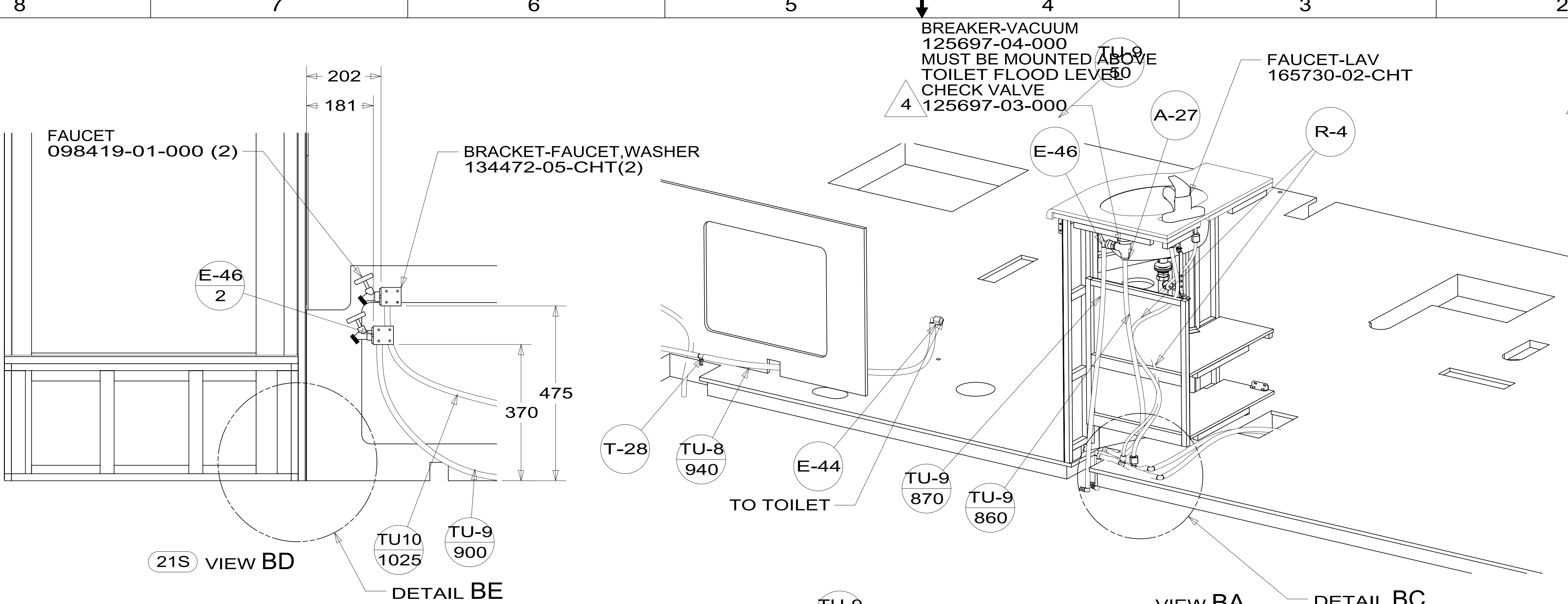
- 1BT WATER HEATER, TANKLESS
- 1B2 WTR HTR-10GAL/ELEC/LP/MTRAIID
- 21M WASHER/DRYER PREP
- 21S WASHER & DRYER-PAIR

FOR WATER CALLOUTS SEE DWG NO 116230-01-000

**WINNEBAGO** INDUSTRIES, INC. COPYRIGHT 2014

DFT-ORIG	ORIG. DATE
CHKR	ALL DIMENSIONS ARE IN MILLIMETERS
P.E.	
M.E.	FIRST USED
DSNR	15 J38Q
UNSPECIFIED TOLERANCES ARE:	
WHOLE DIM (X)	: 3
ONE-PLACE (X.X)	: 1.5
TWO-PLACE (X.XX)	: 0.50
ANGLE	: 1°
THIRD ANGLE PROJECTION	
DO NOT SCALE DRAWING	REFER TO ES0018 FOR FASTENER TIGHTENING GUIDELINES
TITLE: WATER SYSTEM INSTL	
SHEET 1 OF 5	PART NO 189415 REV
REF:	1 20-Feb-2015

\*189415 \*A

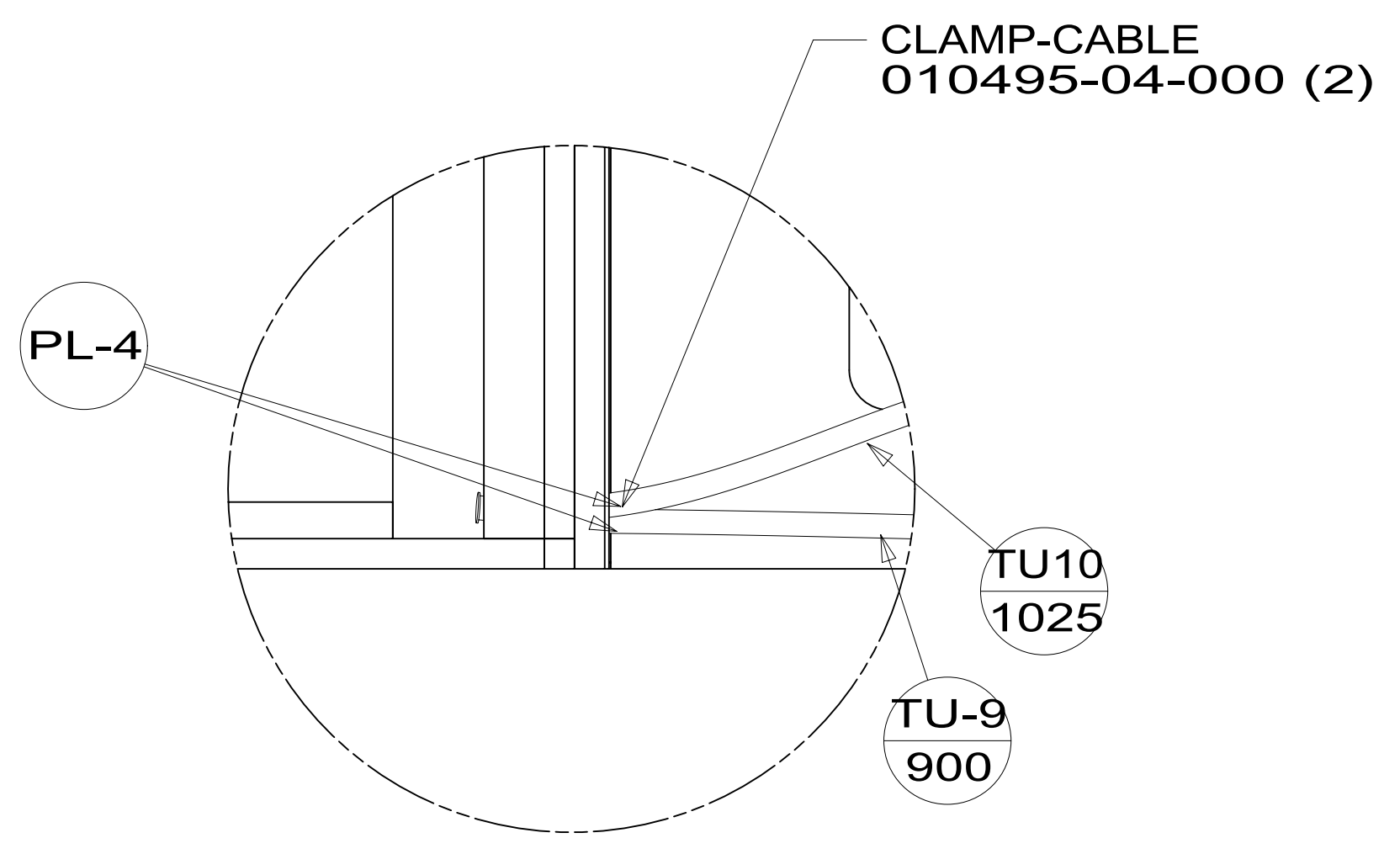


21S VIEW BD

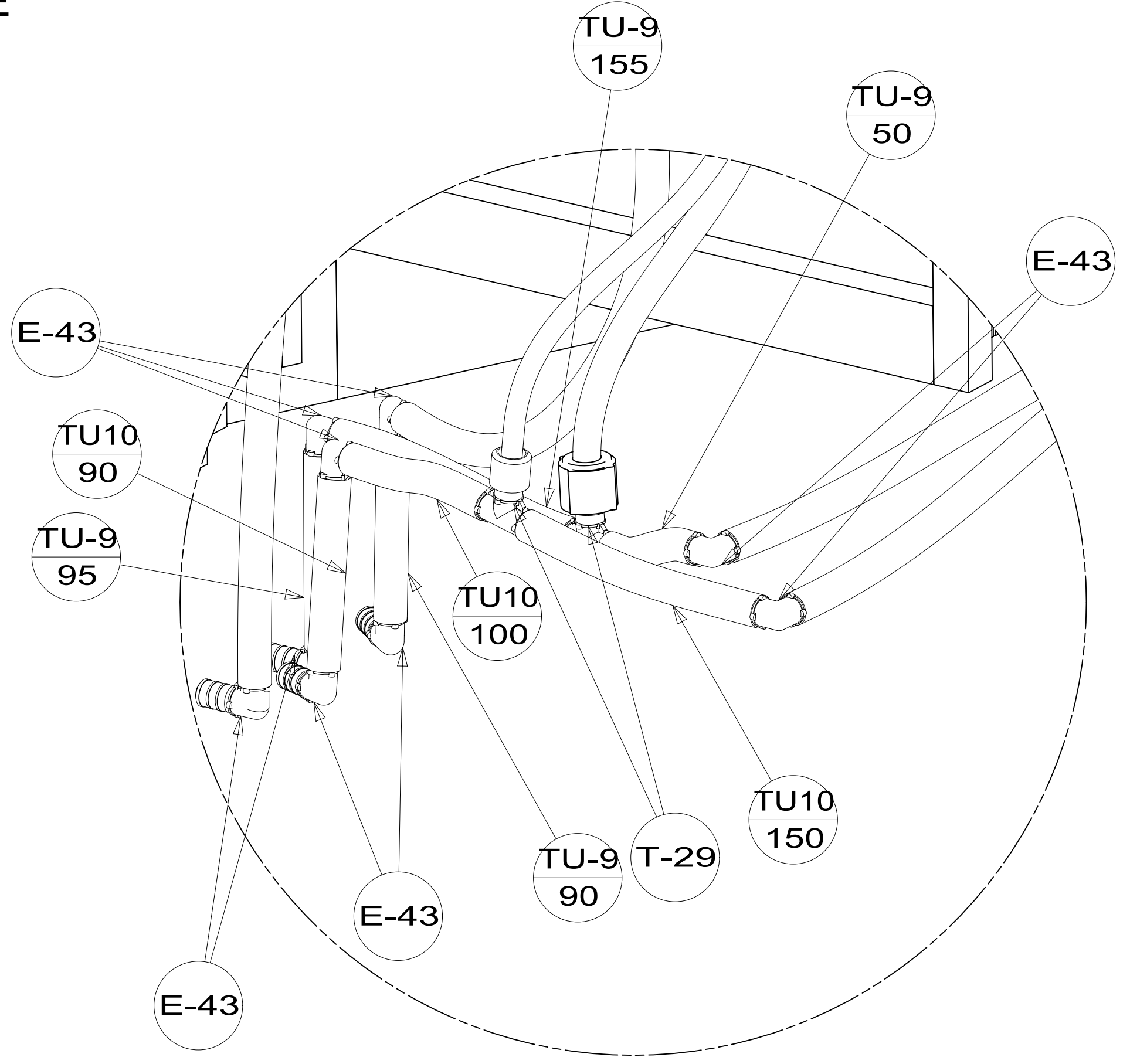
DETAIL BE

VIEW BA

DETAIL BC

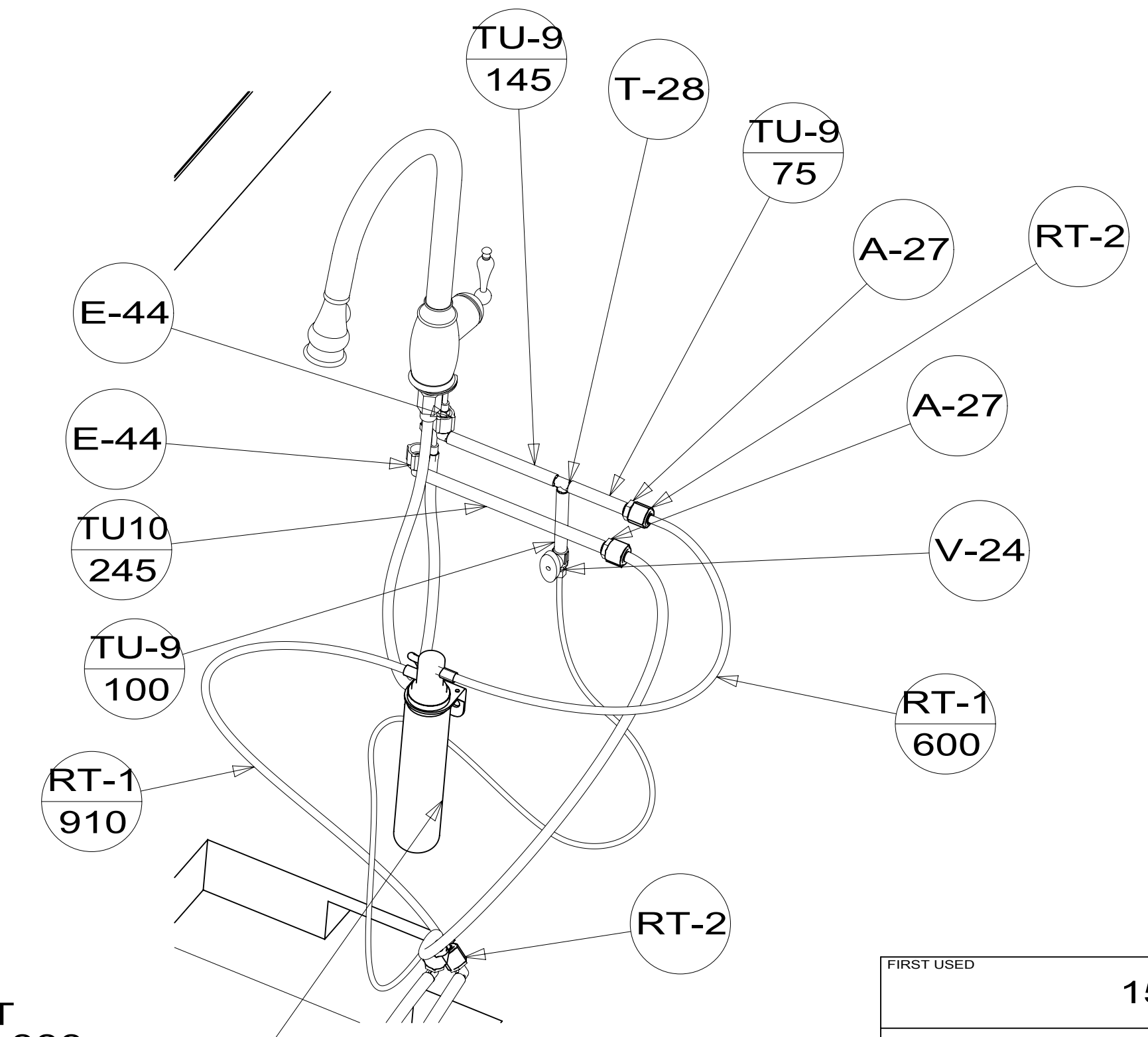


DETAIL BE  
21M



DETAIL BC  
(SHOWN W/OUT FLOOR)

FILTER-KIT  
160946-03-000  
SCREW  
000G67-10-12U (2)



VIEW BB

FIRST USED	15 J38Q	
DO NOT SCALE DRAWING		
TITLE:	WATER SYSTEM INSTL	
SHEET 2	PART NO	189415
	REV	1

\*189415\*

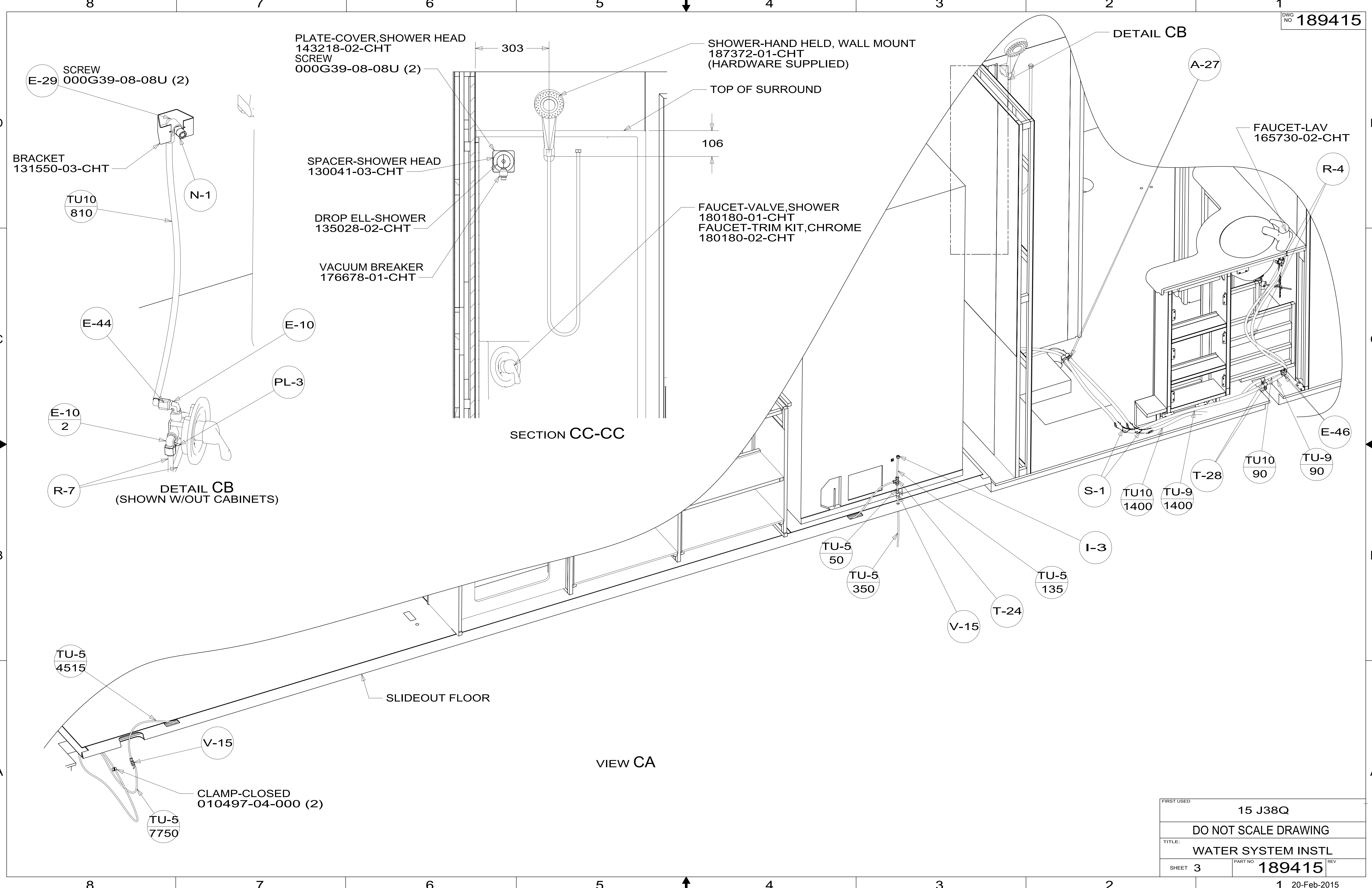


PLATE-COVER,SHOWER HEAD  
143218-02-CHT  
SCREW  
000G39-08-08U (2)

SHOWER-HAND HELD, WALL MOUNT  
187372-01-CHT  
(HARDWARE SUPPLIED)

DETAIL CB

SCREW  
E-29  
000G39-08-08U (2)

BRACKET  
131550-03-CHT

SPACER-SHOWER HEAD  
130041-03-CHT

TOP OF SURROUND

106

FAUCET-LAV  
165730-02-CHT

TU10  
810

N-1

DROP ELL-SHOWER  
135028-02-CHT

FAUCET-VALVE,SHOWER  
180180-01-CHT  
FAUCET-TRIM KIT,CHROME  
180180-02-CHT

VACUUM BREAKER  
176678-01-CHT

E-44

E-10

PL-3

E-10  
2

SECTION CC-CC

R-7

DETAIL CB  
(SHOWN W/OUT CABINETS)

R-4

S-1

TU10  
1400

TU-9  
1400

T-28

TU10  
90

TU-9  
90

E-46

TU-5  
50

TU-5  
350

I-3

TU-5  
135

V-15

T-24

TU-5  
4515

V-15

SLIDEOUT FLOOR

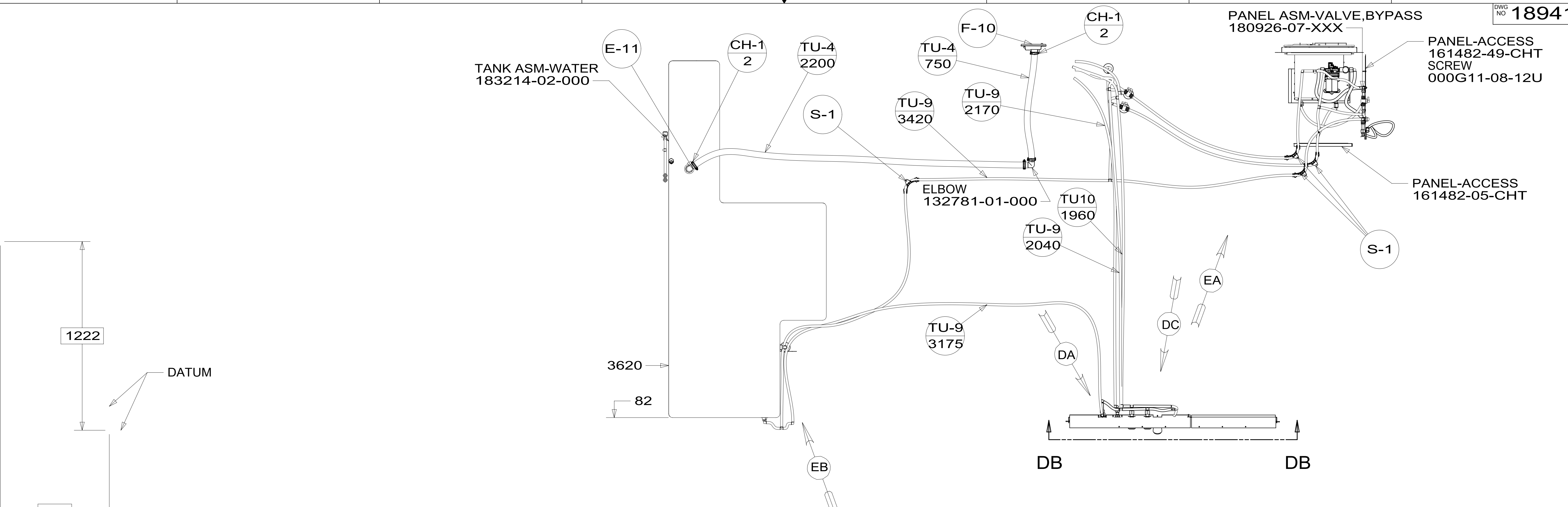
VIEW CA

CLAMP-CLOSED  
010497-04-000 (2)

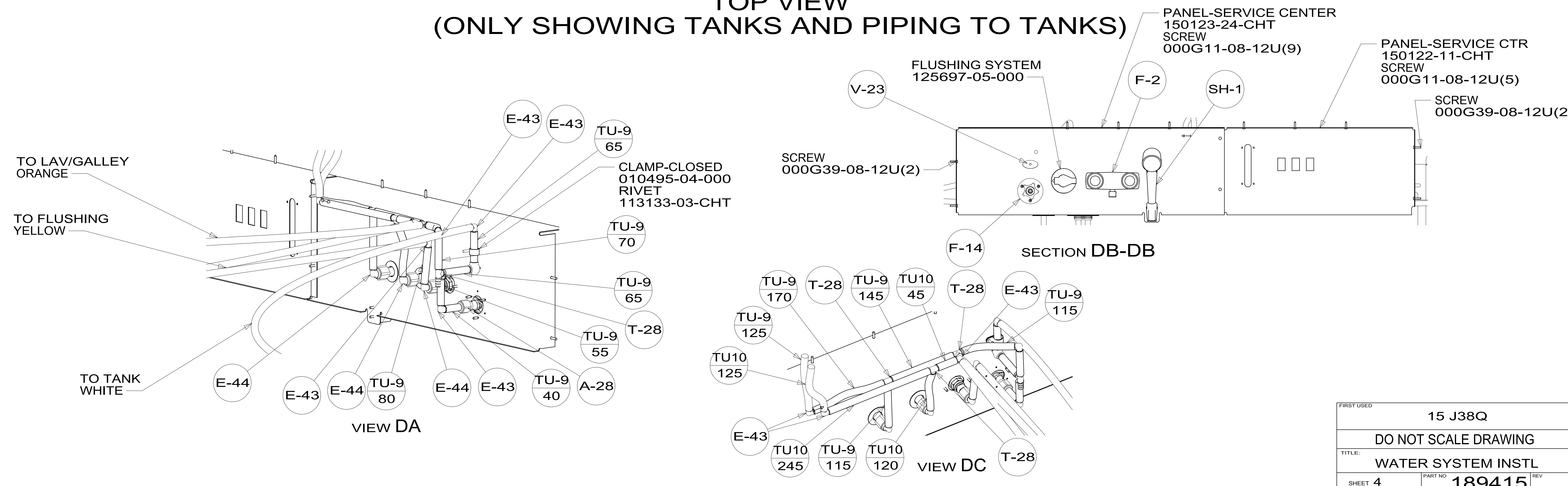
TU-5  
7750

FIRST USED	15 J38Q
TITLE:	DO NOT SCALE DRAWING
	WATER SYSTEM INSTL
SHEET 3	PART NO 189415
	REV 1 20-Feb-2015

\*189415 \*A



**TOP VIEW  
(ONLY SHOWING TANKS AND PIPING TO TANKS)**



FIRST USED	15 J38Q	
TITLE:	DO NOT SCALE DRAWING	
TITLE:	WATER SYSTEM INSTL	
SHEET 4	PART NO	189415
	REV	1
		20-Feb-2015

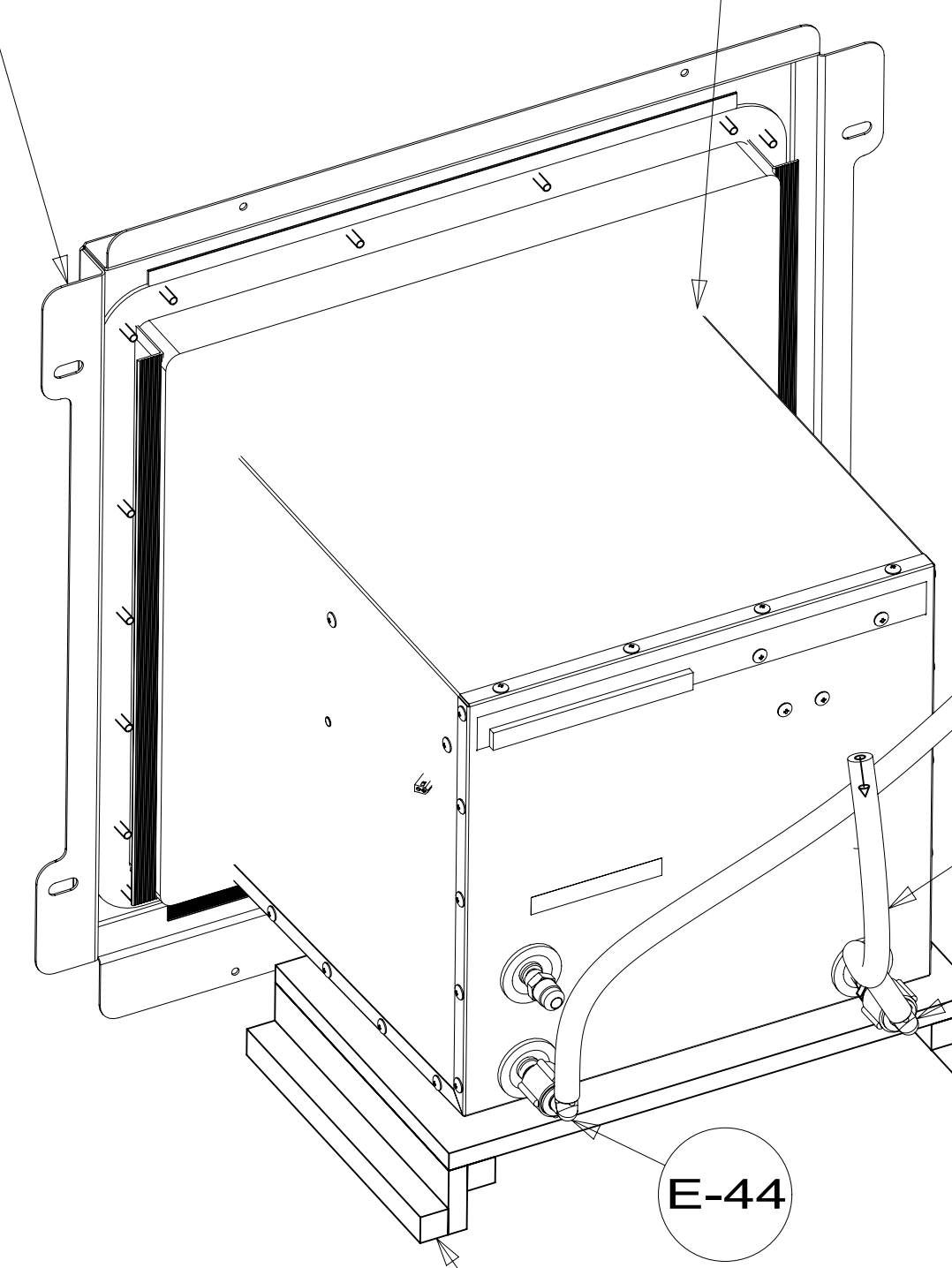
\*189415 \*A



PANEL-WATER HEATER, TANKLESS  
189479-01-CHT

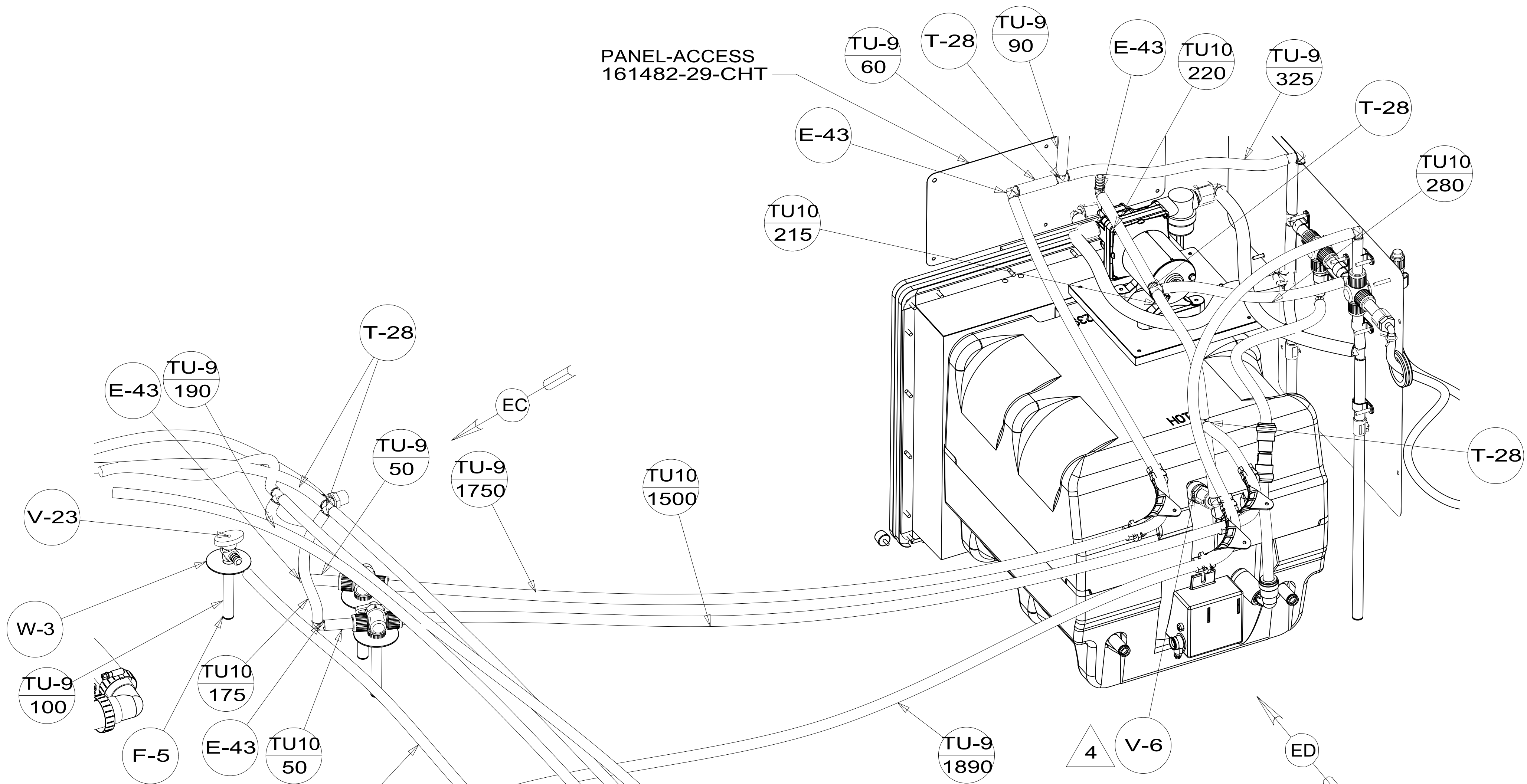
WATER HEATER INSTL-TANKLESS  
186899-07-000

PANEL-ACCESS  
161482-29-CHT

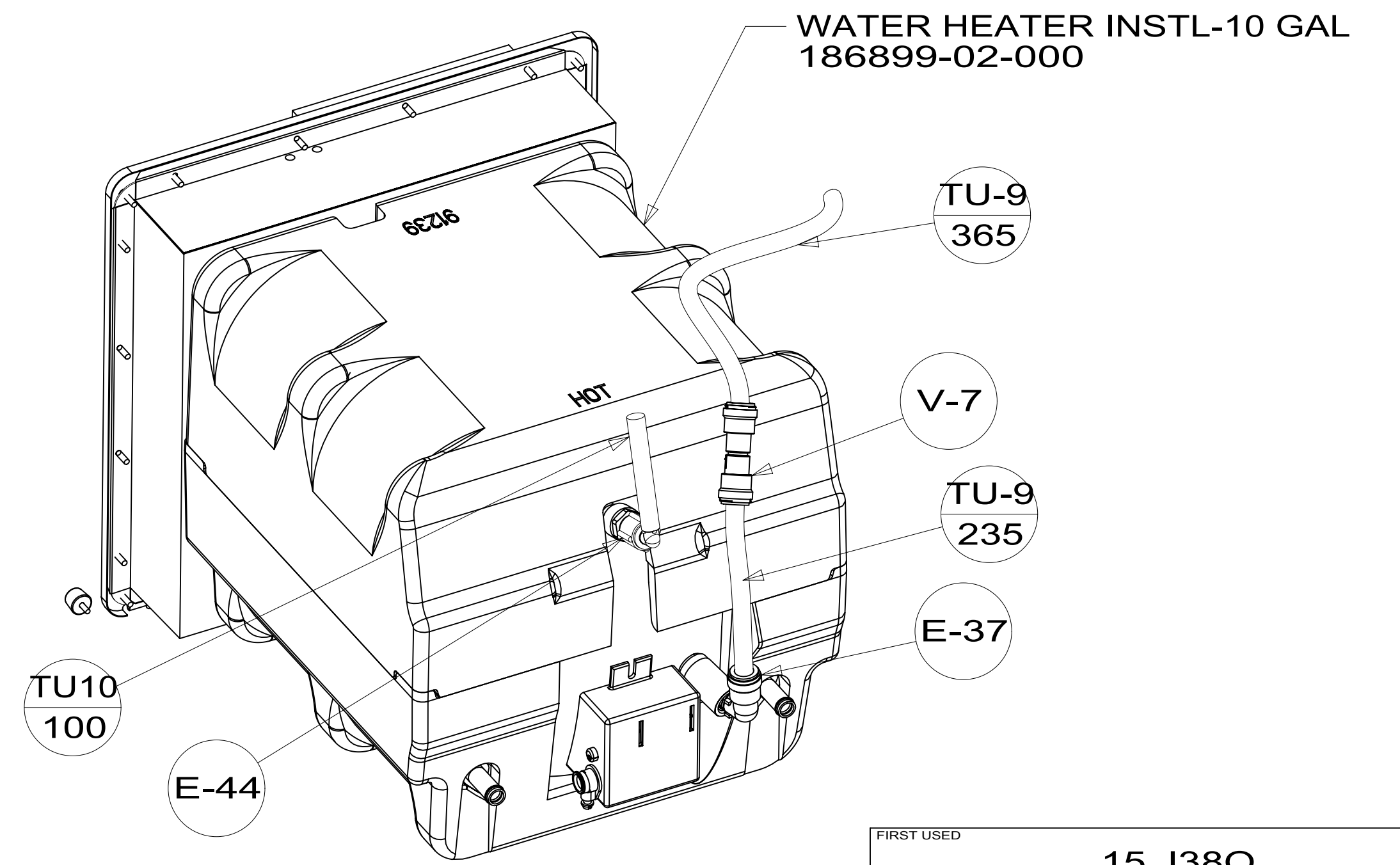


PLATFORM ASM-WATER HEATER  
144200-10-000

VIEW ED 1BT

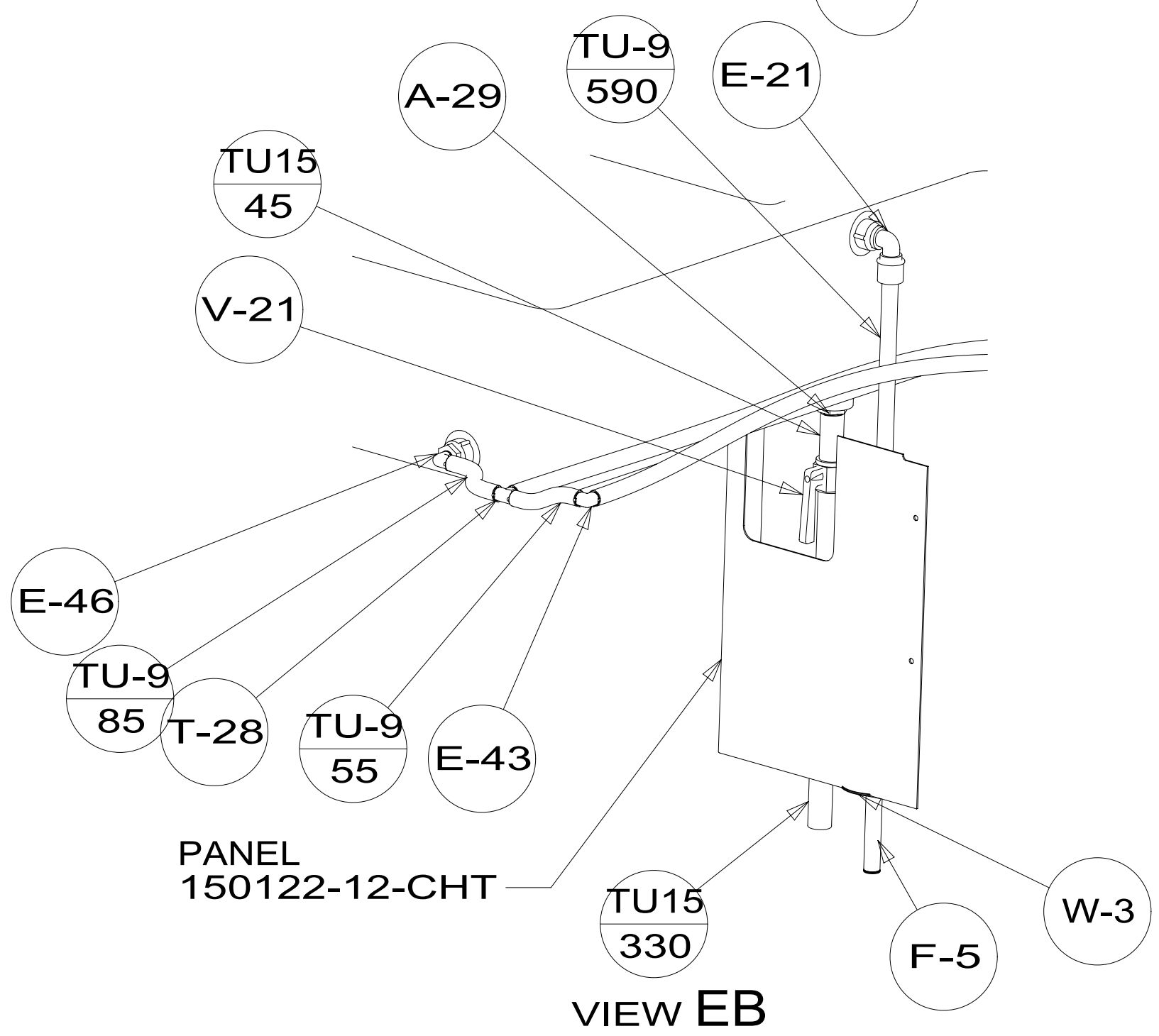


VIEW EA  
(SHOWN W/OUT ACCESS PANEL)



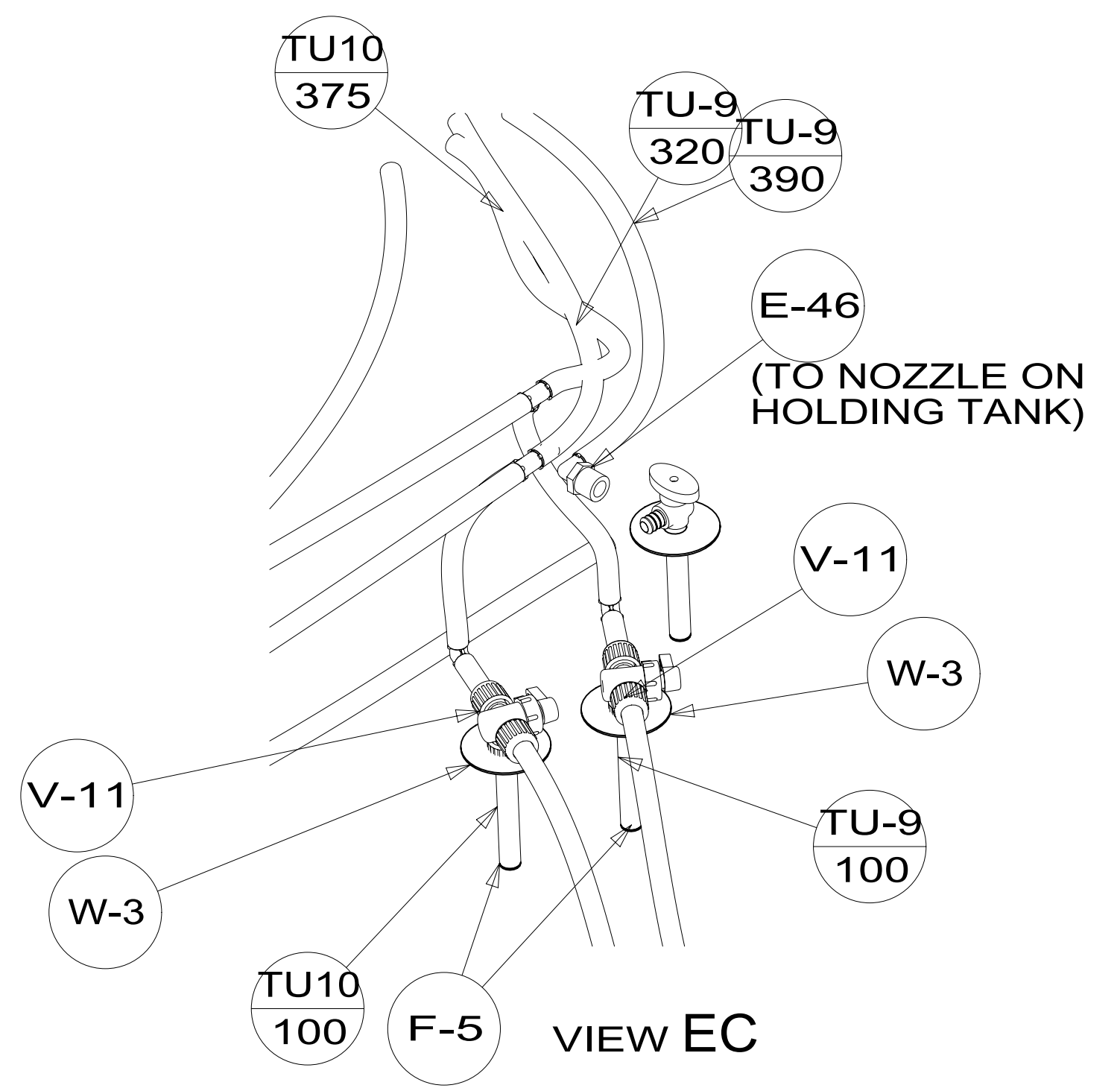
WATER HEATER INSTL-10 GAL  
186899-02-000

VIEW ED 1B2



PANEL  
150122-12-CHT

VIEW EB



VIEW EC

FIRST USED	15 J38Q	
DO NOT SCALE DRAWING		
TITLE:	WATER SYSTEM INSTL	
SHEET 5	PART NO 189415	REV
1 20-Feb-2015		

\*189415\*