

14. REQUIRES 10 GALLONS OF 182955-01-000.
13. PLACE PLYWOOD UNDER SHOWER AS REQUIRED.
12. ADD TEFLON TAPE 010405-01-000.
11. GLUE FITTING AFTER CABINET IS INSTALLED.
10. APPLY PRIMER 126427-02-000 AND CEMENT 126427-01-000 BETWEEN ELBOW AND FLEX PIPE.
9. SEE DRAWING 061607 FOR INSTALLATION OF GROMMETS.
8. SECURE DRAINAGE PIPES TO CABINET USING WIRE TIE 108046-02-000, AND SCREW 000G67-10-12U AT INTERVALS OF NOT MORE THAN 1219 MM APART.
7. SECURE VENT PIPE TO TANK WITH CLAMP 062401-02-000.
6. VENT PIPE MUST PROJECT 51 MIN AND 64 MAX ABOVE ROOF FOR PROPER FIT AND FUNCTION. ADD S-1 (116666-01-CHT SEAL-VENT PIPE) AROUND PIPE ON ROOF BEFORE VENT CAP IS INSTALLED.
5. SEAL AROUND SHOWER WITH SILICONE.
4. USE SMOOTH PLUMBERS PUTTY 167459-01-000 TO SEAL STRAINER (0.2 PER STRAINER).
3. ALL PIPE AND FITTINGS TO BE ASSEMBLED WITH SOLVENT 004020-01-000 (USA), 004020-02-000 (CAN)
2. SLOPE OF TRAP ARM MUST BE 6 PER 305 mm.
1. SLOPE OF HORIZONTAL PIPING TO BE MINIMUM OF 3 PER 305 mm.

- (21S) WASHER & DRYER-PAIR
- (21M) WASHER/DRYER PREP
- (1B1) CODES/STANDARDS USA
- (265) CODES/STANDARDS-CSA/CMVSS

WINNEBAGO INDUSTRIES, INC. COPYRIGHT 2014

DFT-ORIG	ORIG. DATE
CHKR	ALL DIMENSIONS ARE IN MILLIMETERS
P.E.	
M.E.	FIRST USED
DSNR	14 J37F

UNSPECIFIED TOLERANCES ARE:

WHOLE DIM (X)	: 3
ONE-PLACE (X.X)	: 1.5
TWO-PLACE (X.XX)	: 0.50
ANGLE	: 1°

THIRD ANGLE PROJECTION

DO NOT SCALE DRAWING REFER TO ES0018 FOR FASTENER TIGHTENING GUIDELINES

TITLE: **DRAINAGE SYSTEM INSTL**

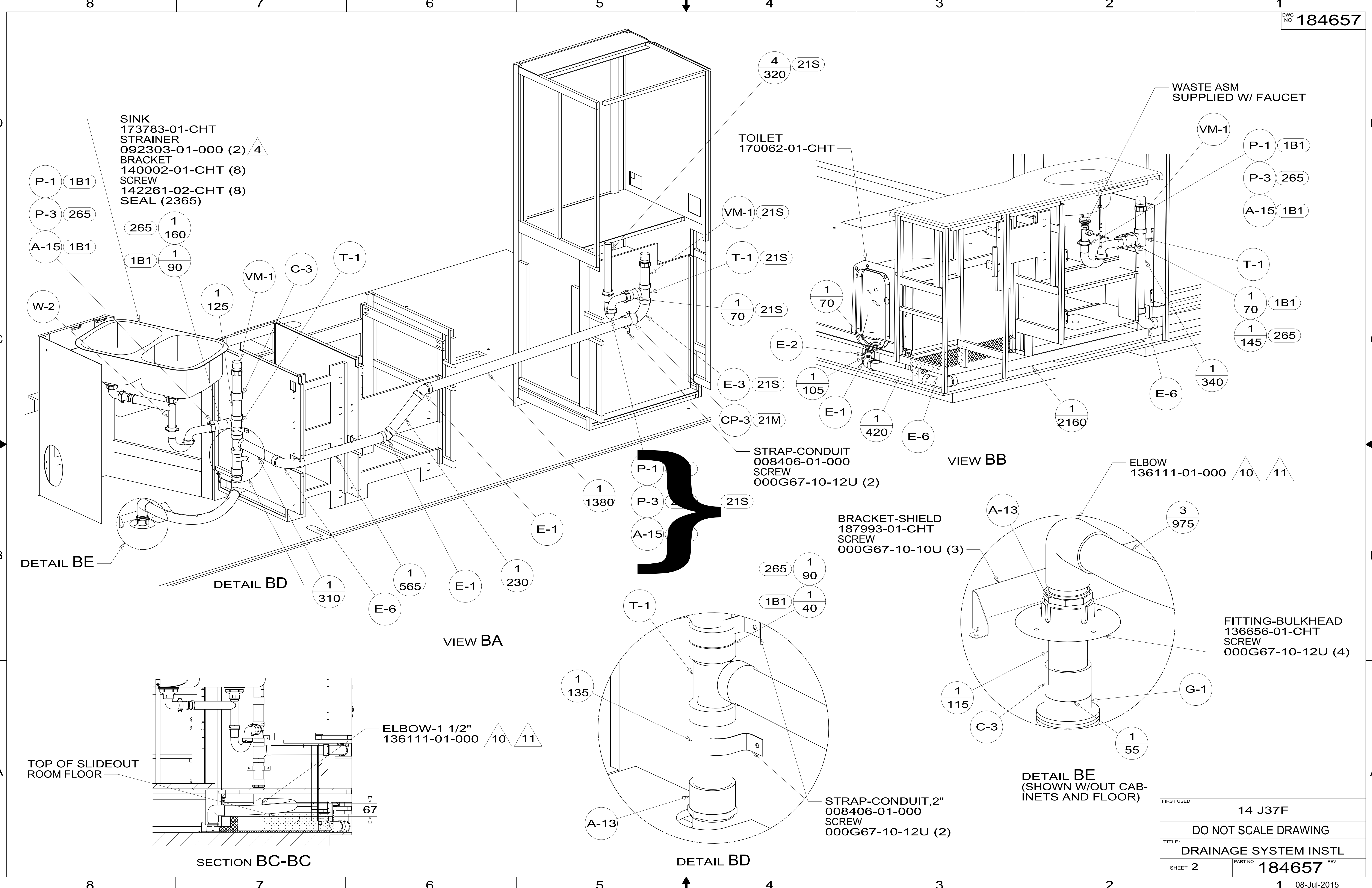
SHEET 1 OF 4 PART NO **184657** REV

REF: 1 08-Jul-2015

FOR DRAINAGE CALLOUTS SEE DWG NO 116229-01-000

NOTES:

*184657 *A



- SINK
173783-01-CHT
- STRAINER
092303-01-000 (2) \triangle 4
- BRACKET
140002-01-CHT (8)
- SCREW
142261-02-CHT (8)
- SEAL (2365)

TOILET
170062-01-CHT

WASTE ASM
SUPPLIED W/ FAUCET

VIEW BB

VIEW BA

SECTION BC-BC

DETAIL BD

DETAIL BE
(SHOWN W/OUT CAB-
INETS AND FLOOR)

TOP OF SLIDEOUT
ROOM FLOOR

STRAP-CONDUIT
008406-01-000
SCREW
000G67-10-12U (2)

BRACKET-SHIELD
187993-01-CHT
SCREW
000G67-10-10U (3)

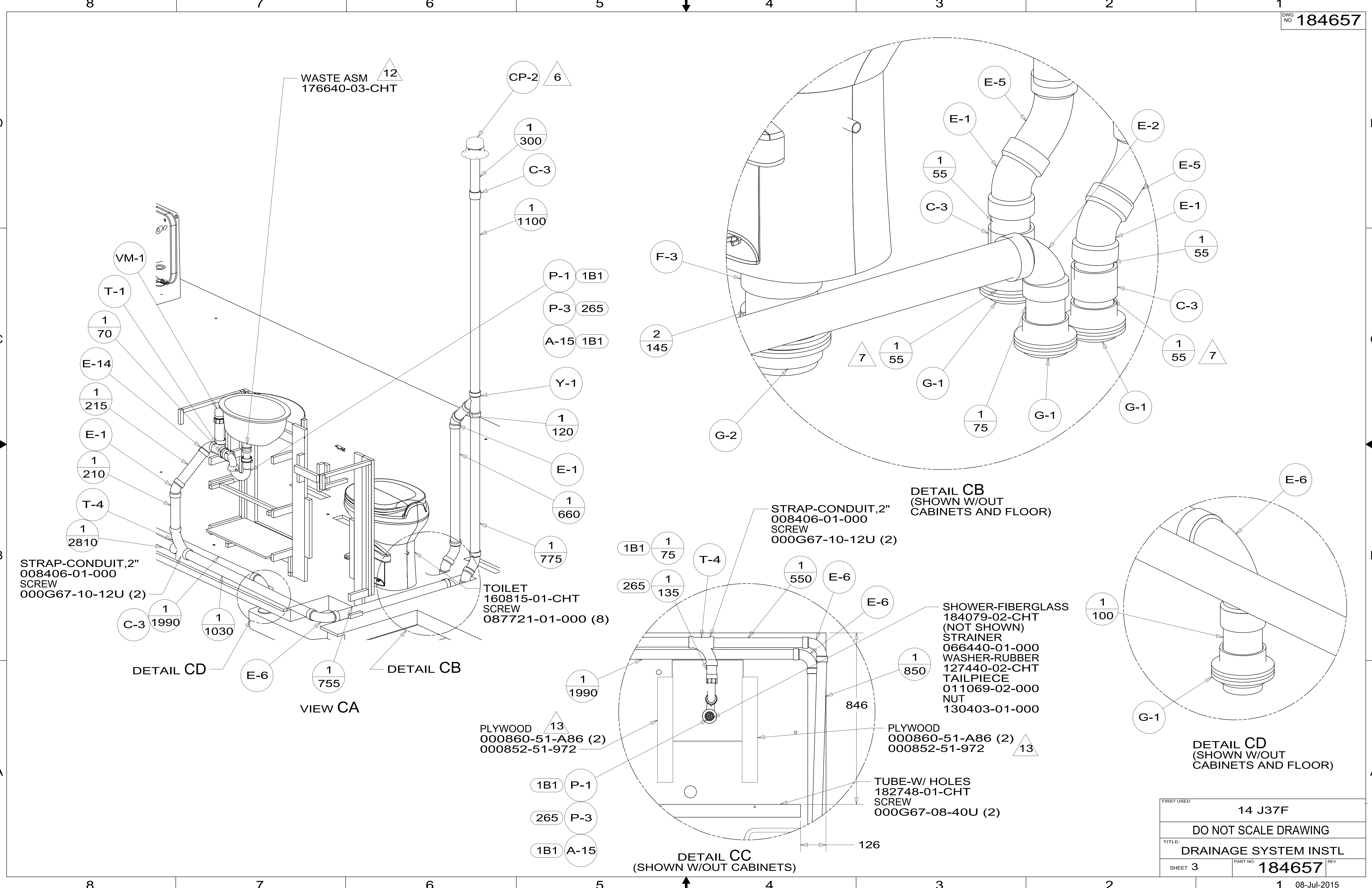
FITTING-BULKHEAD
136656-01-CHT
SCREW
000G67-10-12U (4)

ELBOW-1 1/2"
136111-01-000 \triangle 10 \triangle 11

STRAP-CONDUIT, 2"
008406-01-000
SCREW
000G67-10-12U (2)

FIRST USED	14 J37F	
TITLE:	DO NOT SCALE DRAWING	
	DRAINAGE SYSTEM INSTL	
SHEET 2	PART NO	184657
	REV	1
		08-Jul-2015

184657



WASTE ASM
176640-03-CHT

STRAP-CONDUIT, 2"
008406-01-000
SCREW
000G67-10-12U (2)

TOILET
160815-01-CHT
SCREW
087721-01-000 (8)

STRAP-CONDUIT, 2"
008406-01-000
SCREW
000G67-10-12U (2)

DETAIL CB
(SHOWN W/OUT
CABINETS AND FLOOR)

SHOWER-FIBERGLASS
184079-02-CHT
(NOT SHOWN)
STRAINER
066440-01-000
WASHER-RUBBER
127440-02-CHT
TAILPIECE
011069-02-000
NUT
130403-01-000

PLYWOOD
000860-51-A86 (2)
000852-51-972

PLYWOOD
000860-51-A86 (2)
000852-51-972

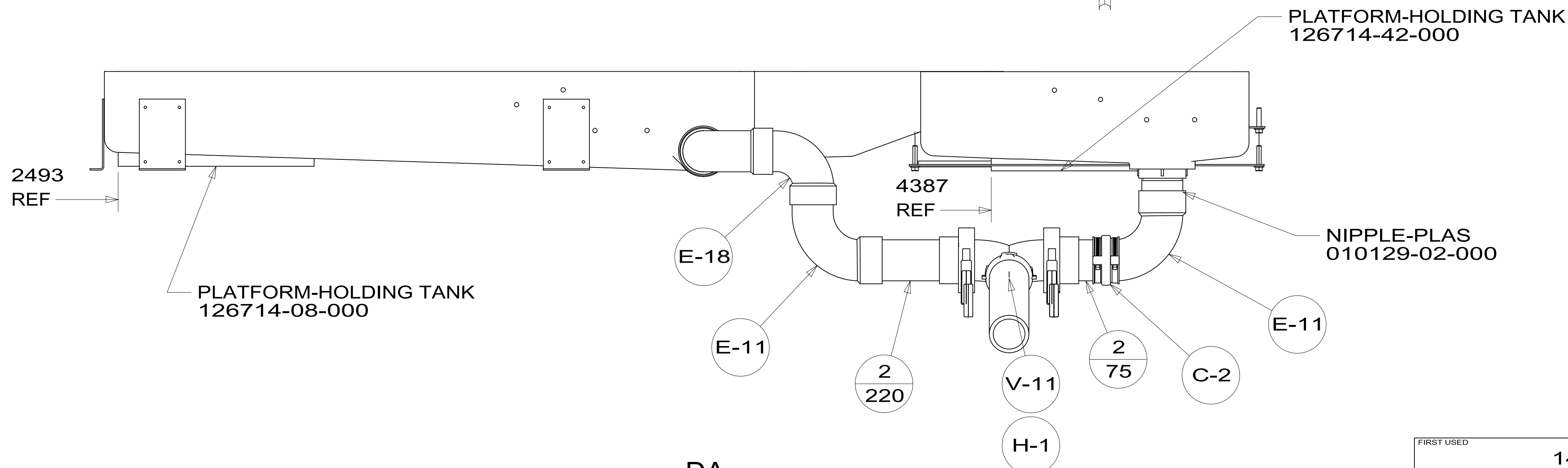
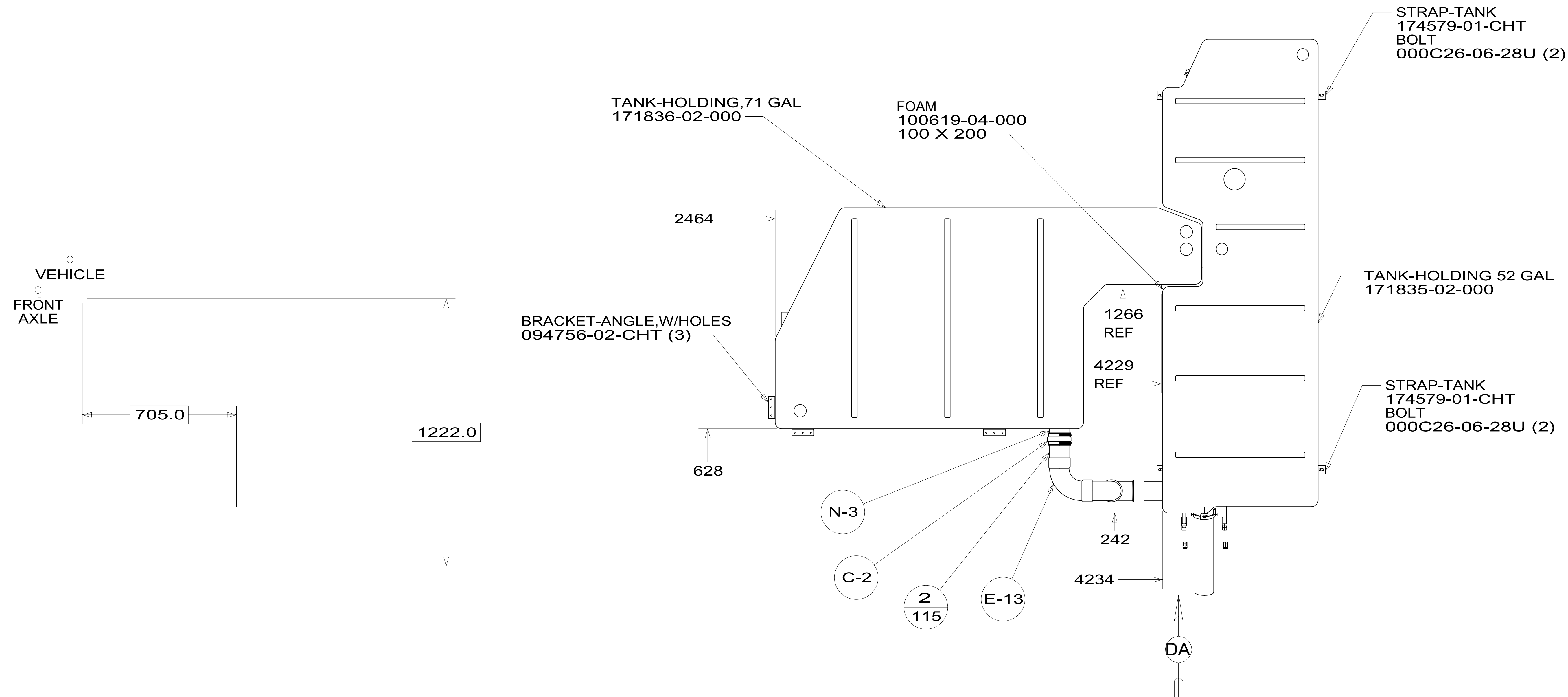
TUBE-W/ HOLES
182748-01-CHT
SCREW
000G67-08-40U (2)

DETAIL CC
(SHOWN W/OUT CABINETS)

DETAIL CD
(SHOWN W/OUT
CABINETS AND FLOOR)

FIRST USED	14 J37F
DO NOT SCALE DRAWING	
TITLE: DRAINAGE SYSTEM INSTL	
SHEET 3	PART NO 184657 REV
1 08-Jul-2015	

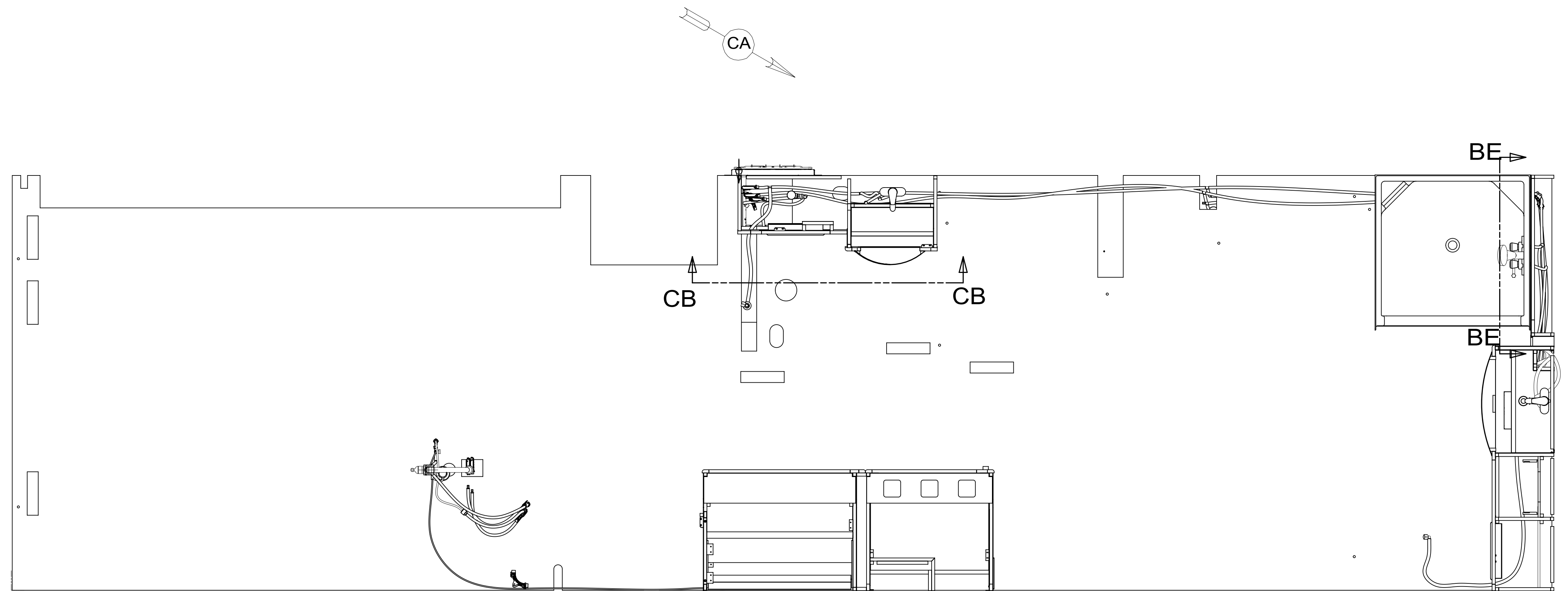
184657



VIEW DA

FIRST USED	14 J37F	
TITLE:	DO NOT SCALE DRAWING	
TITLE:	DRAINAGE SYSTEM INSTL	
SHEET 4	PART NO 184657	REV
	1	08-Jul-2015

*184657 *A



- 1BT WATER HEATER, TANKLESS
- 21S WASHER & DRYER-PAIR
- 21M WASHER/DRYER PREP
- 79W REFRIGERATOR-4 DOOR
- 15L RESIDENTIAL REFRIGERATOR PKG
- 1B2 WTR HTR-10 GAL/ELEC/LP/MTRAIID
- 53E WATER SYS WINTERIZATION PKG

- NOTES:
9. ALL CRIMP FITTINGS TO 3/4" PEX TUBING REQUIRE 3/4" CLAMP 140171-05-000.
 8. ALL CRIMP FITTINGS TO 1/2" PEX TUBING REQUIRE 1/2" CLAMP 140171-03-000.
 7. ALL CRIMP FITTINGS TO 5/8" FLEX TUBING REQUIRE 5/8" CLAMP 140171-04-000.
 - 6 LABEL HOT AND COLD SUPPLY TUBES AND TAPE FITTING TO TUBE BEFORE CABINET SET TO PREVENT MOVEMENT.
 - 5 ADD PIPE WRAP (LADDER SCRAP 110157-02-000) INSULATION.
 - 4 ADD TEFLON TAPE 010405-02-000.
 3. ALL TUBING TO BE SECURED AT 1200 INTERVALS MAXIMUM WITH CLAMP 010495-01-000 AND SCREW 000G67-10-12U OR EQUIVALENT.
 2. TUBING TO BE INSTALLED WITH SUFFICIENT SLOPE TO PROVIDE DRAINAGE TO NEAREST VALVE.
 1. PLASTIC FITTINGS TO BE SEALED WITH SEALANT 084456-01-000.

FOR WATER CALLOUTS SEE DWG NO 116230-01-000

WINNEBAGO INDUSTRIES, INC. COPYRIGHT 2014

DFTR	ORIG. DATE
CHKR	ALL DIMENSIONS ARE IN MILLIMETERS
P.E.	
M.E.	FIRST USED
DSNR	15 J37F

UNSPECIFIED TOLERANCES ARE:

WHOLE DIM (X)	: 3
ONE-PLACE (X.X)	: 1.5
TWO-PLACE (X.XX)	: 0.50
ANGLE	: 1°

THIRD ANGLE PROJECTION

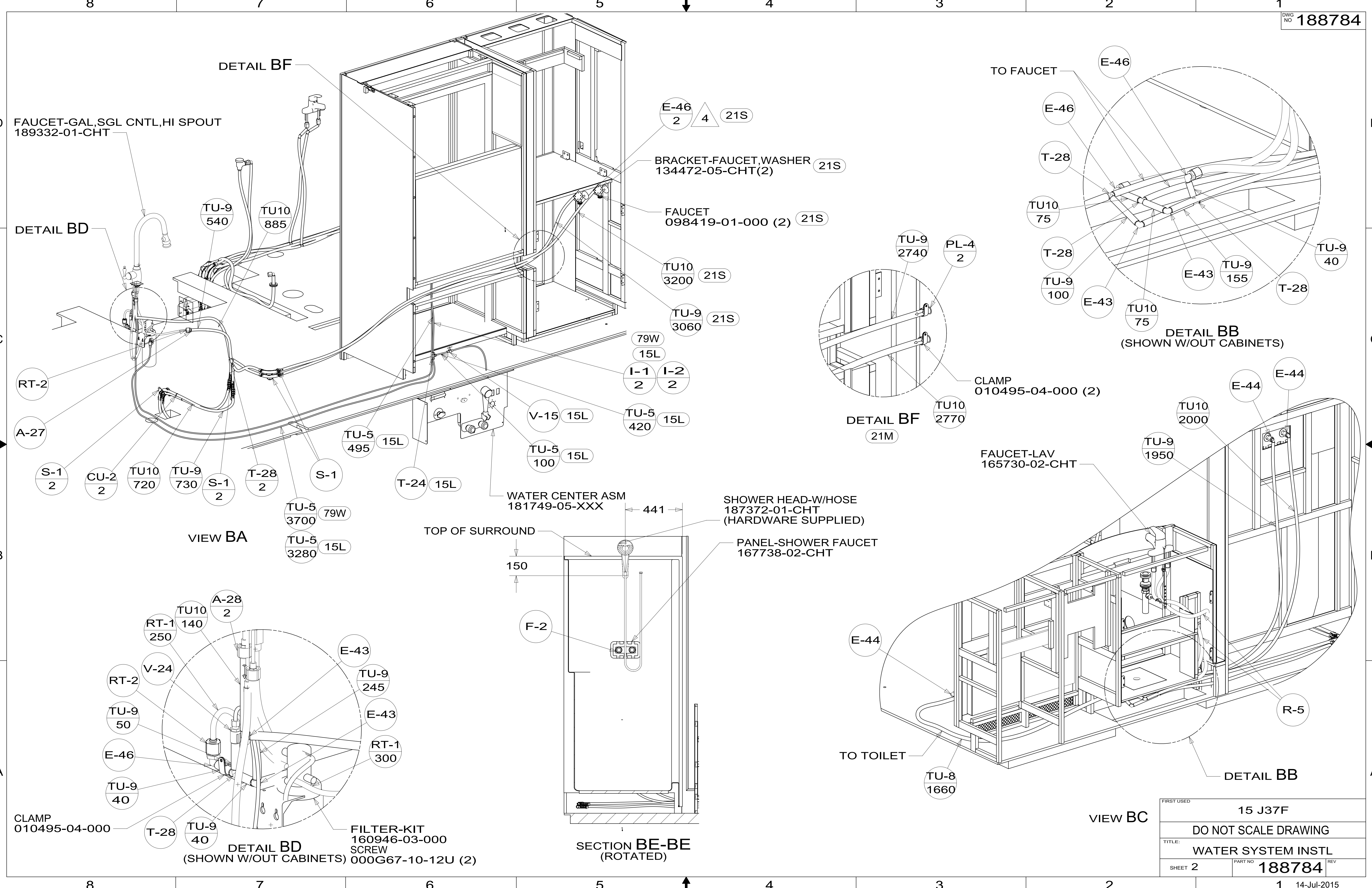
DO NOT SCALE DRAWING REFER TO ES0018 FOR FASTENER TIGHTENING GUIDELINES

TITLE: WATER SYSTEM INSTL

SHEET 1 OF 4 PART NO 188784 REV

REF: 1 14-Jul-2015

*188784 *A



FAUCET-GAL,SGL CNTL,HI SPOUT
189332-01-CHT

E-46
2 4 21S

BRACKET-FAUCET,WASHER
134472-05-CHT(2) 21S

FAUCET
098419-01-000 (2) 21S

TU10
3200 21S

TU-9
3060 21S

79W
15L

I-1
2

I-2
2

TU-5
420 15L

V-15
15L

TU-5
100 15L

TU-5
495 15L

T-24
15L

TU-5
3700 79W

TU-5
3280 15L

WATER CENTER ASM
181749-05-XXX

SHOWER HEAD-W/HOSE
187372-01-CHT
(HARDWARE SUPPLIED)

PANEL-SHOWER FAUCET
167738-02-CHT

CLAMP
010495-04-000 (2)

FAUCET-LAV
165730-02-CHT

TU-9
1950

TU10
2000

DETAIL BD

VIEW BA

TOP OF SURROUND

SECTION BE-BE
(ROTATED)

DETAIL BF
21M

DETAIL BB
(SHOWN W/OUT CABINETS)

DETAIL BB

VIEW BC

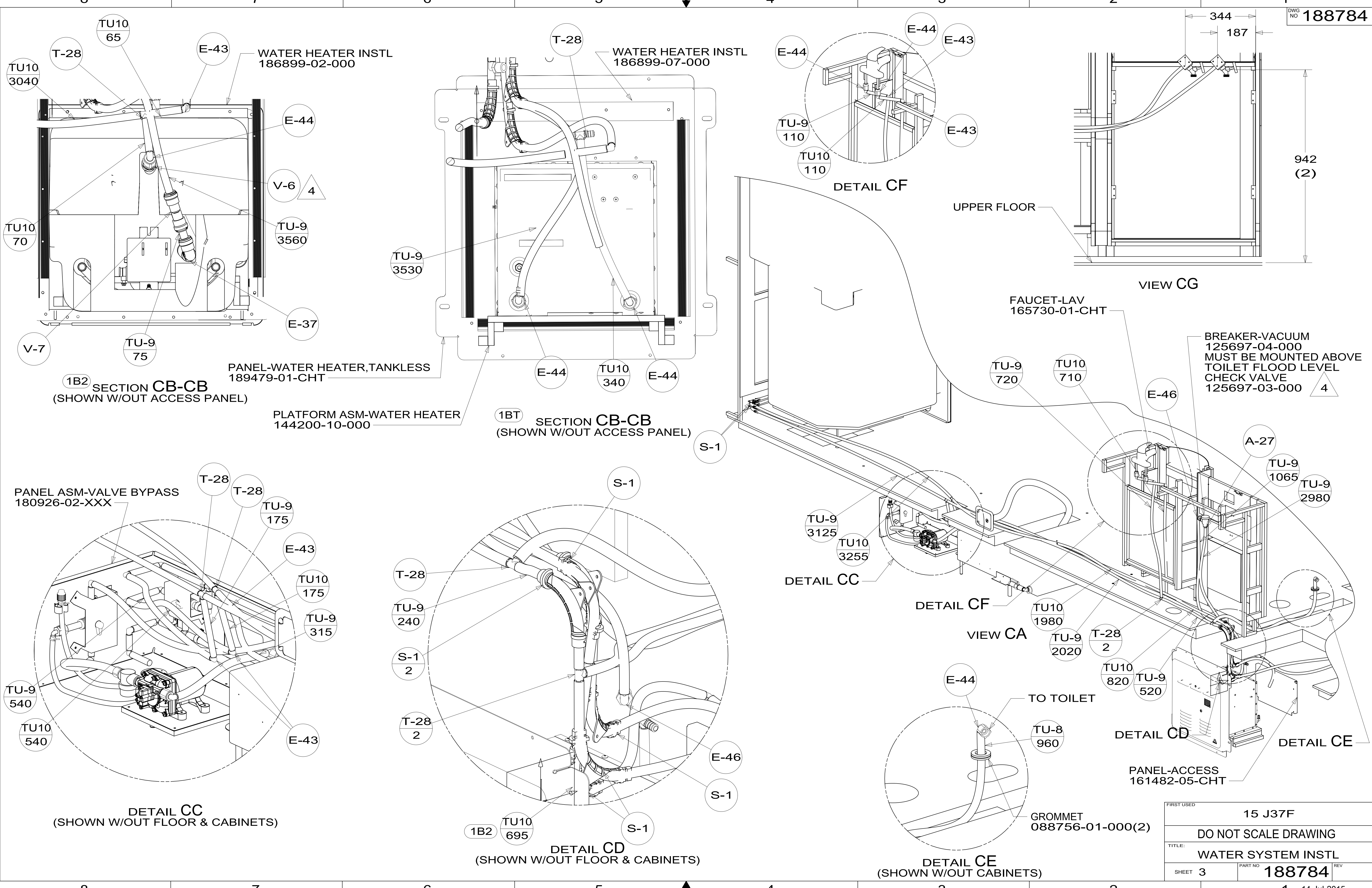
CLAMP
010495-04-000

DETAIL BD
(SHOWN W/OUT CABINETS)

FILTER-KIT
160946-03-000
SCREW
000G67-10-12U (2)

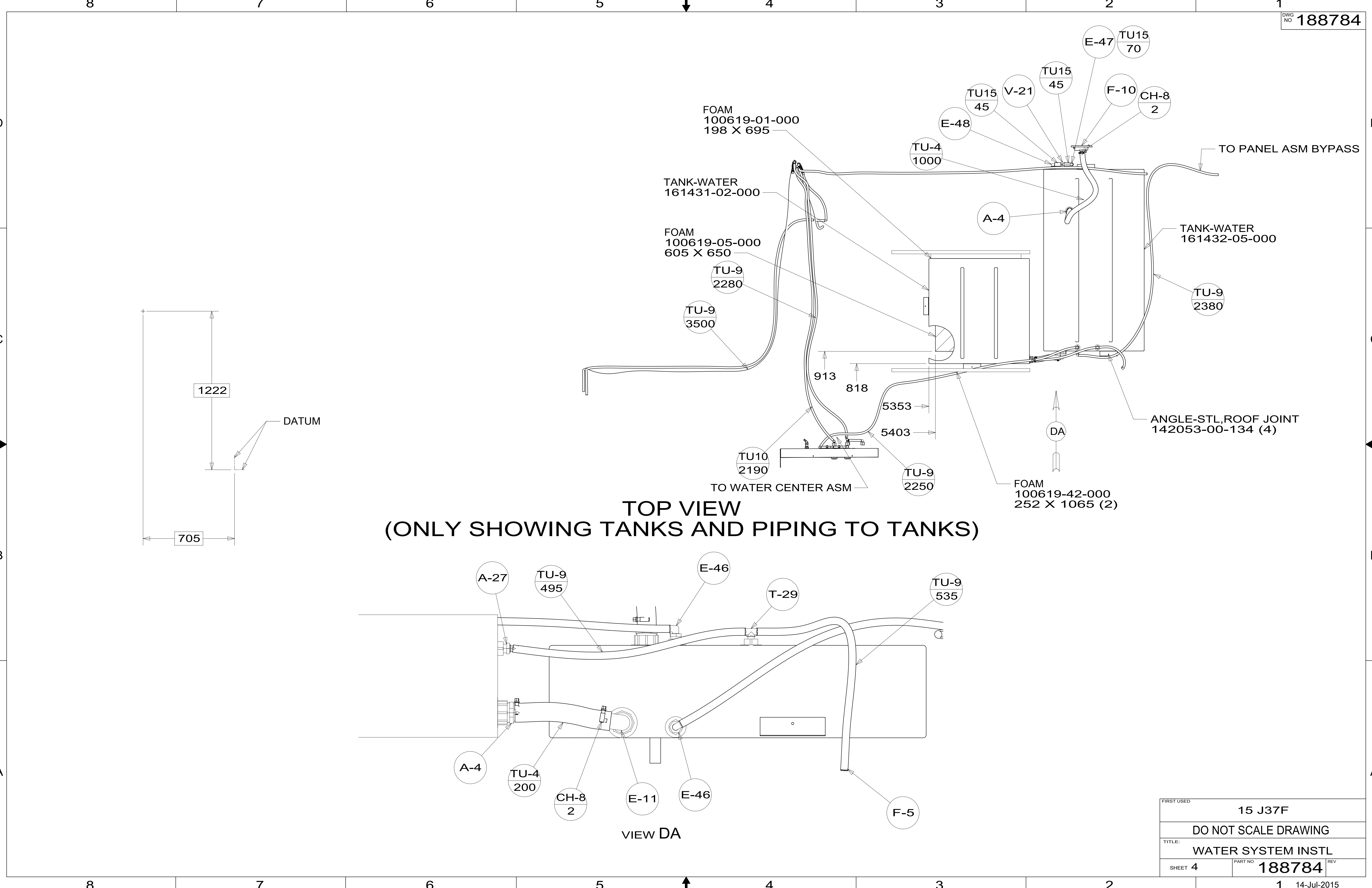
FIRST USED	15 J37F	
TITLE:	DO NOT SCALE DRAWING	
TITLE:	WATER SYSTEM INSTL	
SHEET 2	PART NO	188784
	REV	
		14-Jul-2015

188784



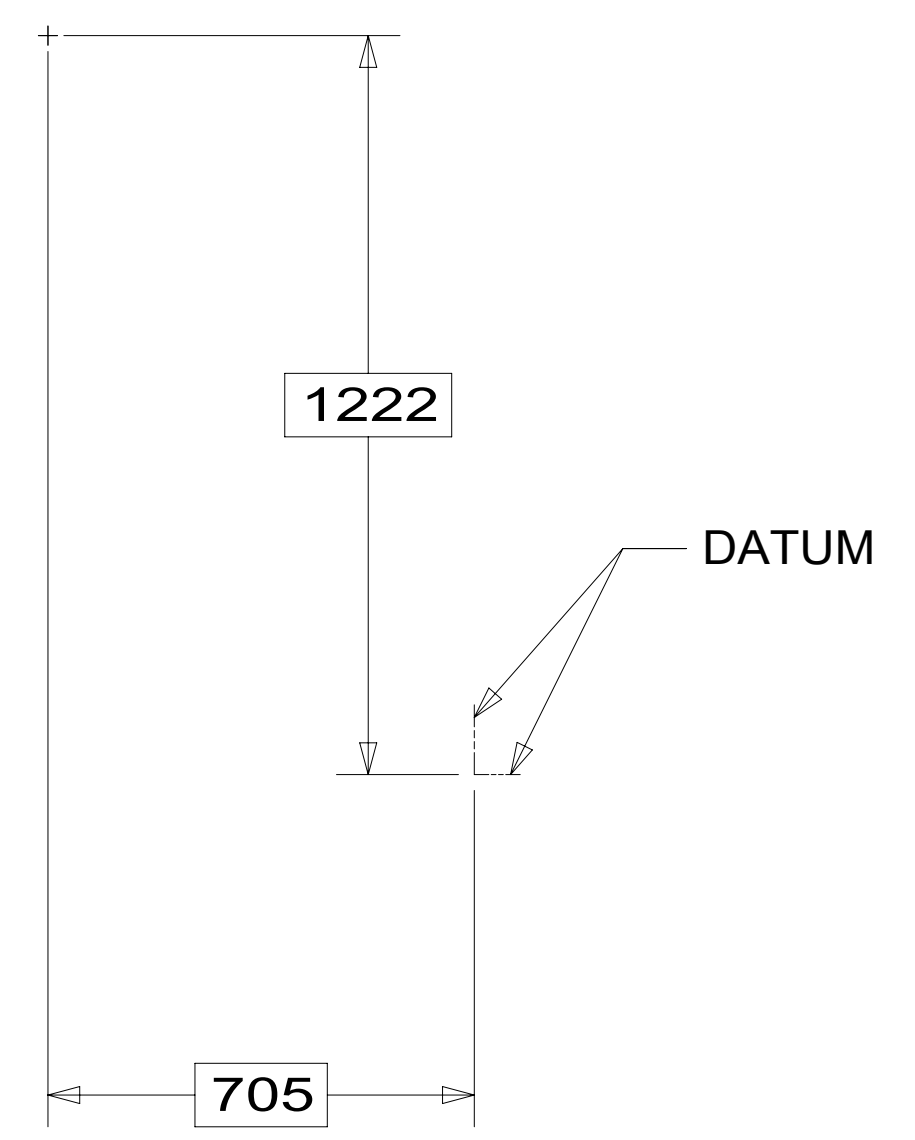
FIRST USED	15 J37F
DO NOT SCALE DRAWING	
TITLE: WATER SYSTEM INSTL	
SHEET 3	PART NO 188784 REV
14-Jul-2015	

*188784 *A



TOP VIEW
(ONLY SHOWING TANKS AND PIPING TO TANKS)

VIEW DA



FIRST USED	15 J37F	
TITLE:	DO NOT SCALE DRAWING	
	WATER SYSTEM INSTL	
SHEET 4	PART NO 188784	REV
	1	14-Jul-2015

*188784 *A