

- NOTES:
1. SLOPE OF HORIZONTAL PIPING TO BE MINIMUM OF 3 PER 305 mm.
  2. SLOPE OF TRAP ARM MUST BE 6 PER 305 mm.
  3. ALL PIPE AND FITTINGS TO BE ASSEMBLED WITH SOLVENT 004020-01-000 (USA), 004020-02-000 (CAN)
  4. USE SMOOTH PLUMBERS PUTTY 167459-01-000 TO SEAL STRAINER (0.2 PER STRAINER).
  5. SEAL AROUND SHOWER WITH SILICONE.
  6. VENT PIPE MUST PROJECT 51 MIN AND 64 MAX ABOVE ROOF FOR PROPER FIT AND FUNCTION. ADD S-1 (116666-01-CHT SEAL-VENT PIPE) AROUND PIPE ON ROOF BEFORE VENT CAP IS INSTALLED.
  7. SECURE VENT PIPE TO TANK WITH CLAMP 062401-02-000.
  8. SECURE DRAINAGE PIPES TO CABINET USING WIRE TIE 108046-02-000, AND SCREW 000G67-10-12U AT INTERVALS OF NOT MORE THAN 4 FEET APART.
  9. SEE DRAWING 061607 FOR INSTALLATION OF GROMMETS.
  10. APPLY PRIMER 126427-02-000 AND CEMENT 126427-01-000 BETWEEN ELBOW AND FLEX PIPE.
  11. GLUE FITTING AFTER CABINET IS INSTALLED.

- 21S WASHER & DRYER-PAIR
- 21M WASHER/DRYER PREP
- 1B1 CODES/STANDARDS USA
- 265 CODES/STANDARDS-CSA/CMVSS

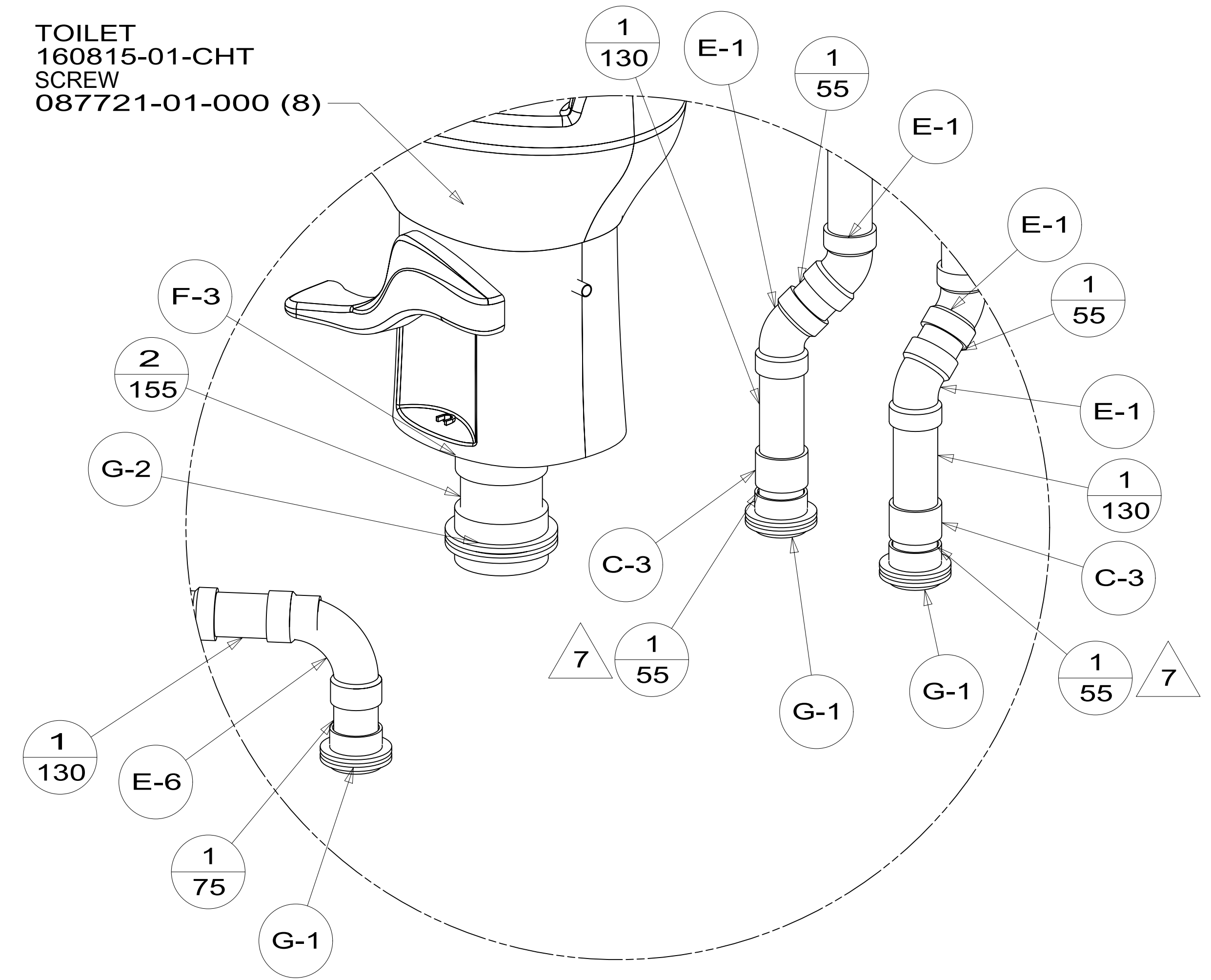
**WINNEBAGO** INDUSTRIES, INC. COPYRIGHT 2014

|                              |  |
|------------------------------|--|
| DFT-ORIG                     | ORIG. DATE   |
| CHKR                         | ALL DIMENSIONS ARE IN MILLIMETERS                  |
| P.E.                         |  |
| M.E.                         | FIRST USED   |
| DSNR                         | 15 J35P  |
| UNSPECIFIED TOLERANCES ARE:  |  |
| WHOLE DIM (X)                | : 3  |
| ONE-PLACE (X.X)              | : 1.5  |
| TWO-PLACE (X.XX)             | : 0.50   |
| ANGLE                        | : 1°   |
| THIRD ANGLE PROJECTION       |  |
| DO NOT SCALE DRAWING         | REFER TO ES0018 FOR FASTENER TIGHTENING GUIDELINES |
| TITLE: DRAINAGE SYSTEM INSTL |  |
| SHEET 1 OF 4                 | PART NO 188786 REV                                 |
| REF:                         | 1 09-Jul-2015                                      |

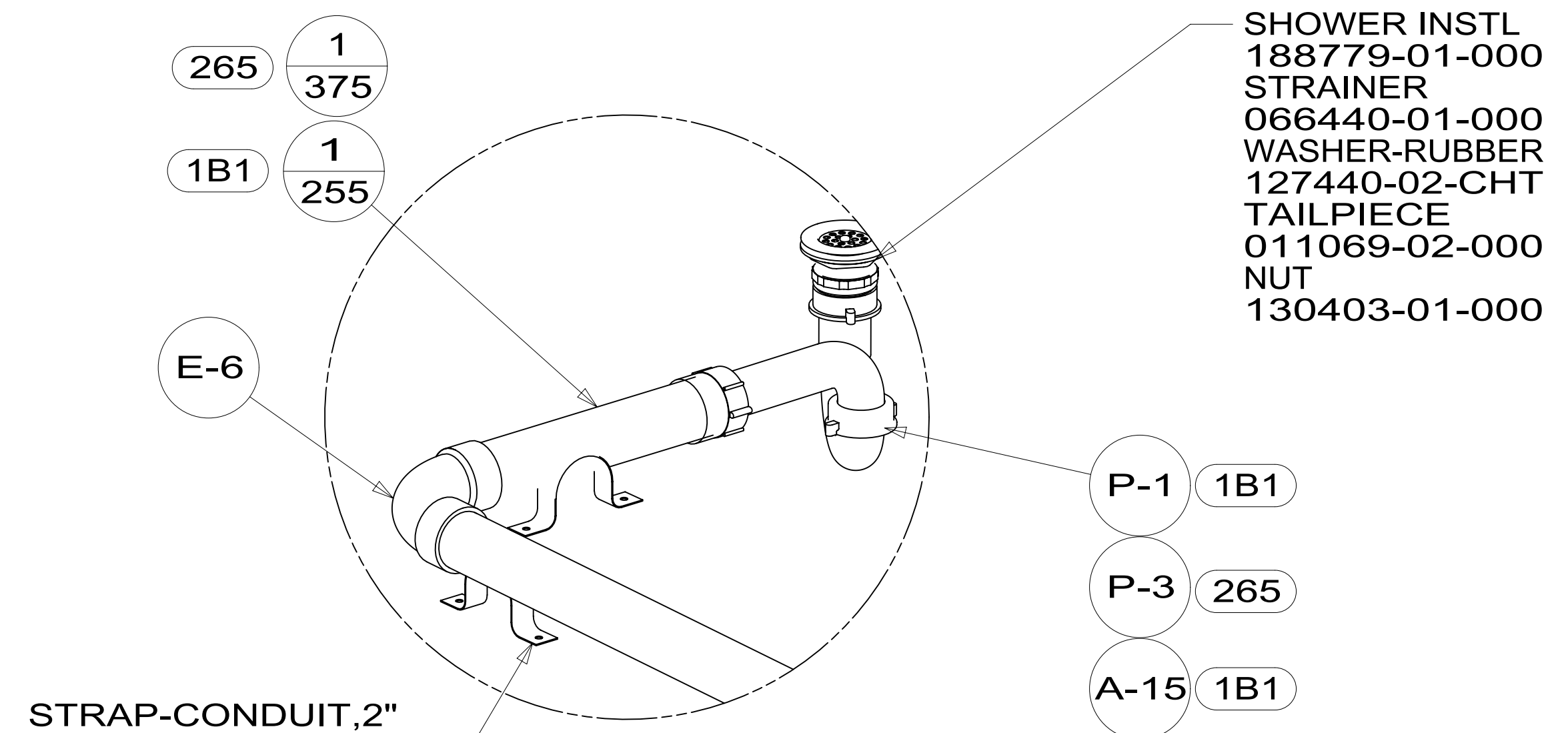
FOR DRAINAGE CALLOUTS SEE DWG NO 116229-01-000

\*188786\*

TOILET  
160815-01-CHT  
SCREW  
087721-01-000 (8)



DETAIL B  
(SHOWN W/OUT FLOOR & CABINETS)



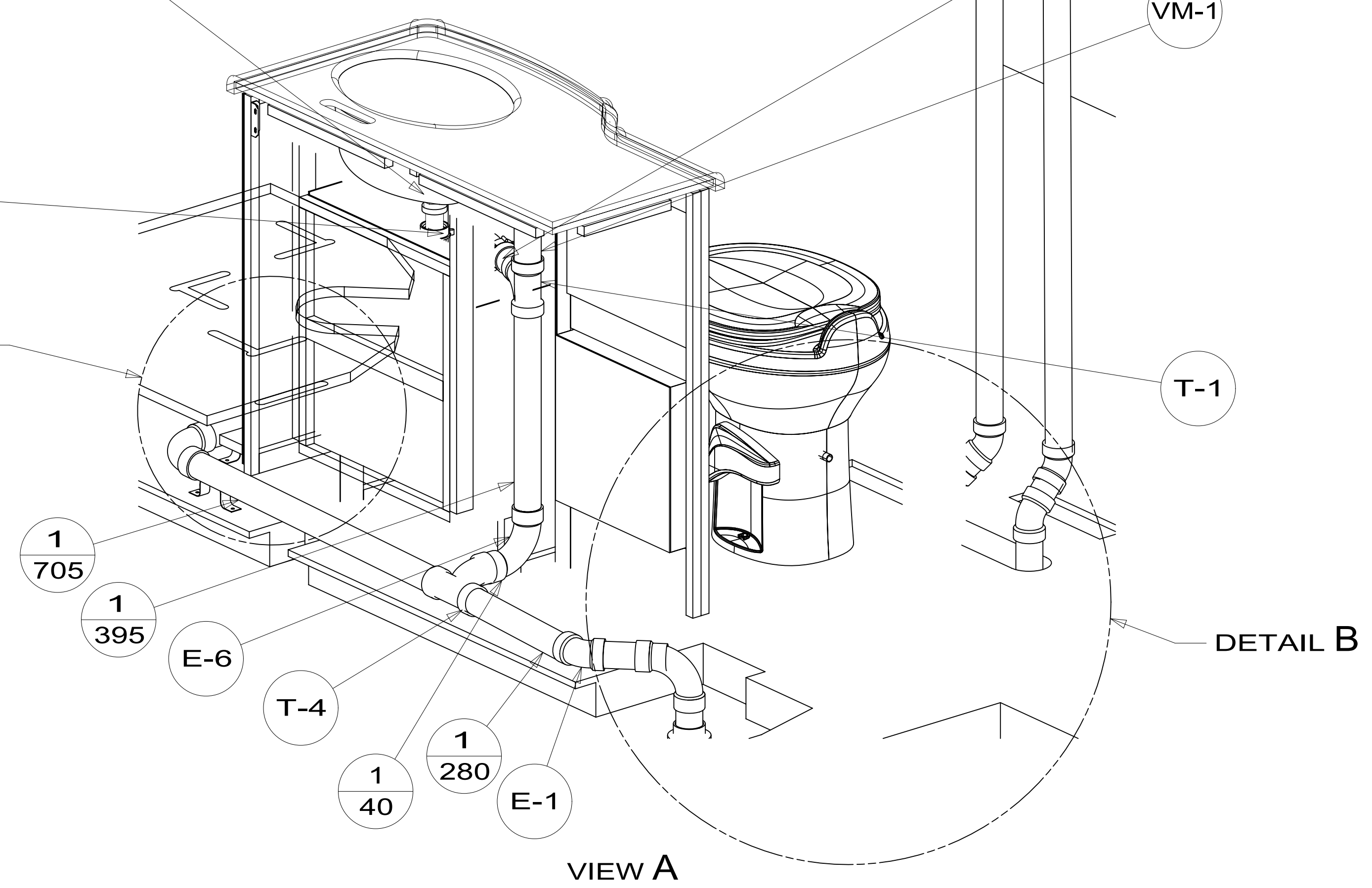
DETAIL C  
(SHOWN W/OUT FLOOR & CABINETS)

STRAP-CONDUIT, 2"  
008406-01-000 (2)

WASTE ASM-LAV, POPUP, VESSEL  
176640-03-CHT

- 1B1 P-1
- 265 P-3
- 1B1 A-15

DETAIL C

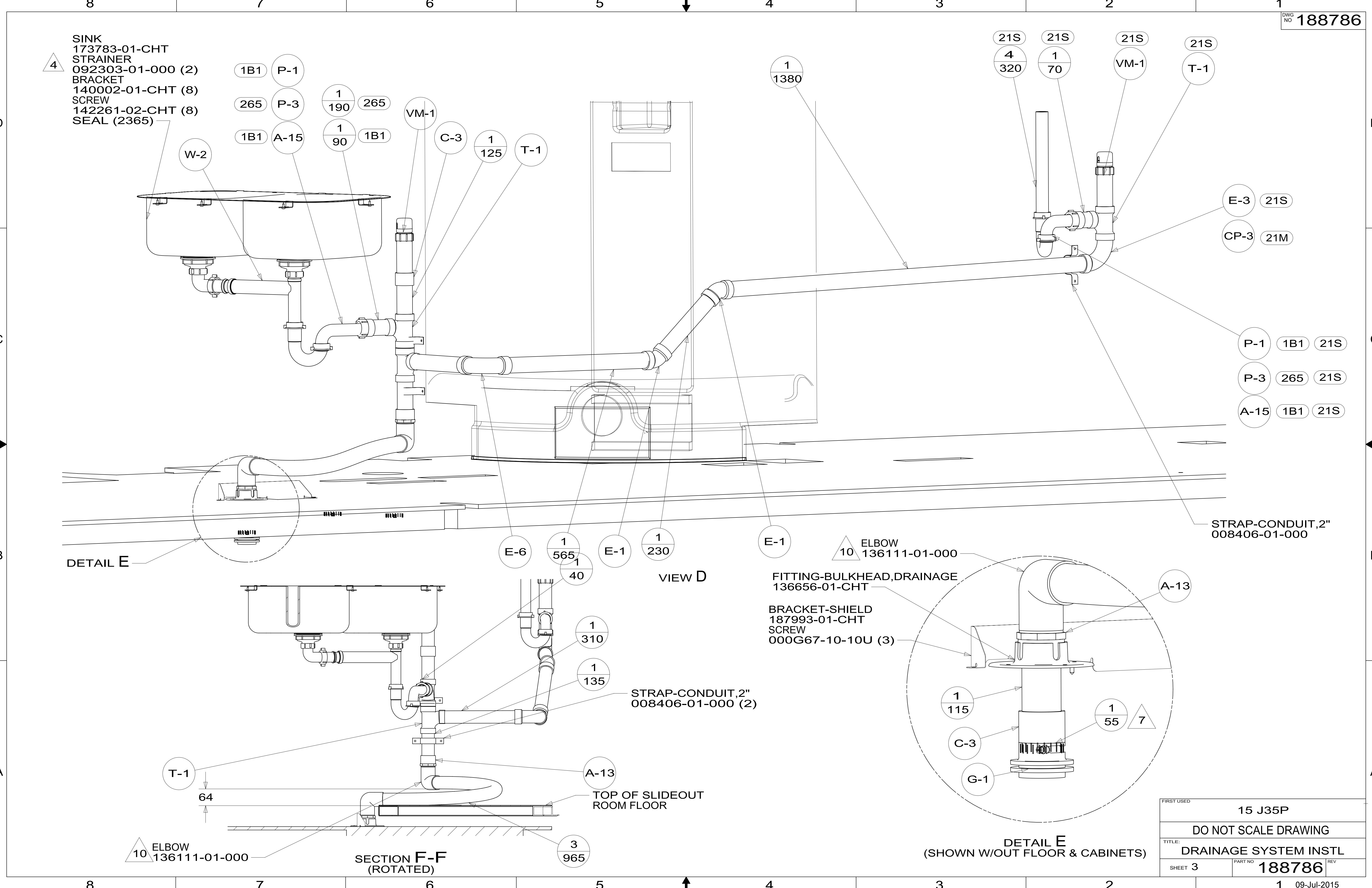


VIEW A

|            |                       |             |
|------------|-----------------------|-------------|
| FIRST USED | 15 J35P               |             |
| TITLE:     | DO NOT SCALE DRAWING  |             |
|            | DRAINAGE SYSTEM INSTL |             |
| SHEET 2    | PART NO 188786        | REV         |
|            |                       | 09-Jul-2015 |

\*188786\*

- SINK 173783-01-CHT
- STRAINER 092303-01-000 (2)
- BRACKET 140002-01-CHT (8)
- SCREW 142261-02-CHT (8)
- SEAL (2365)



- 4
- 1B1 P-1
- 265 P-3
- 1 190
- 265
- 1B1 A-15
- 1 90
- 1B1
- VM-1
- C-3
- 1 125
- T-1

- 21S 4 320
- 21S 1 70
- 21S VM-1
- 21S T-1

- E-3 21S
- CP-3 21M

- P-1 1B1 21S
- P-3 265 21S
- A-15 1B1 21S

STRAP-CONDUIT, 2" 008406-01-000

DETAIL E

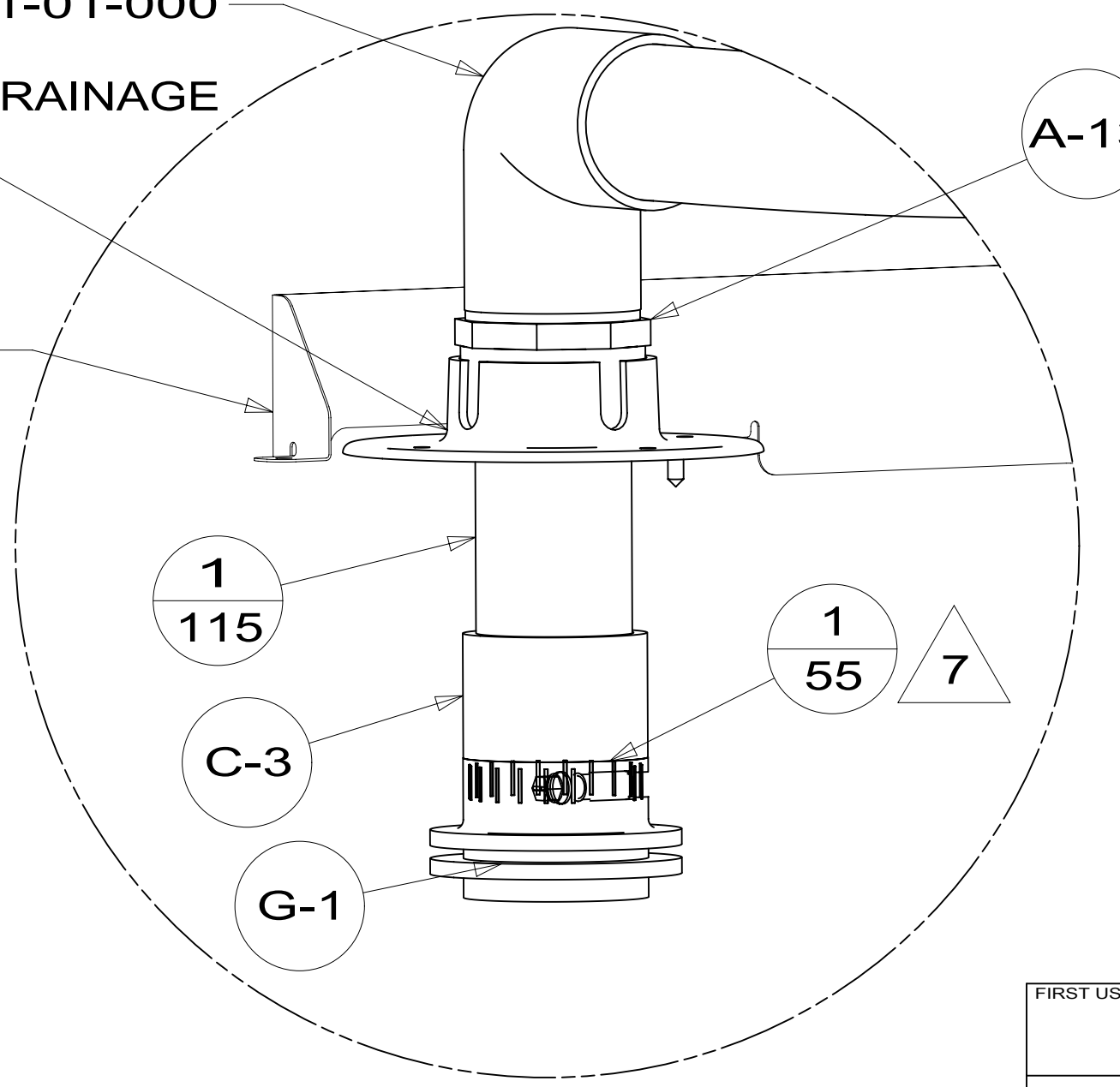
VIEW D

10 ELBOW 136111-01-000

FITTING-BULKHEAD, DRAINAGE 136656-01-CHT

BRACKET-SHIELD 187993-01-CHT  
SCREW 000G67-10-10U (3)

STRAP-CONDUIT, 2" 008406-01-000 (2)



DETAIL E (SHOWN W/OUT FLOOR & CABINETS)

T-1  
64

TOP OF SLIDEOUT ROOM FLOOR

10 ELBOW 136111-01-000

SECTION F-F (ROTATED)

|            |                       |             |
|------------|-----------------------|-------------|
| FIRST USED | 15 J35P               |             |
| TITLE:     | DO NOT SCALE DRAWING  |             |
|            | DRAINAGE SYSTEM INSTL |             |
| SHEET 3    | PART NO 188786        | REV         |
|            | 1                     | 09-Jul-2015 |

\*188786\*

8

7

6

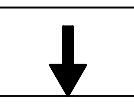
5

4

3

2

1



D

D

C

C

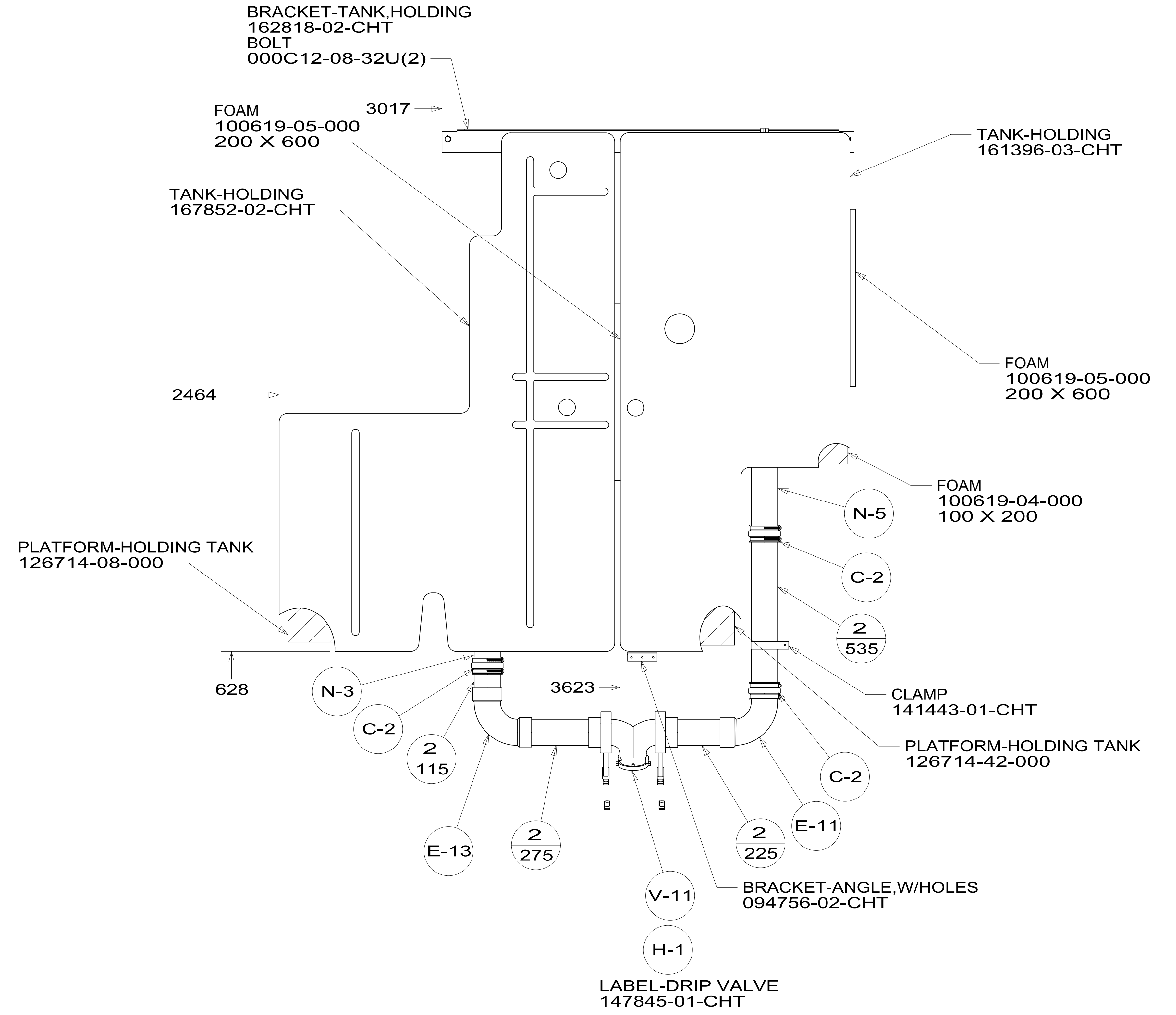
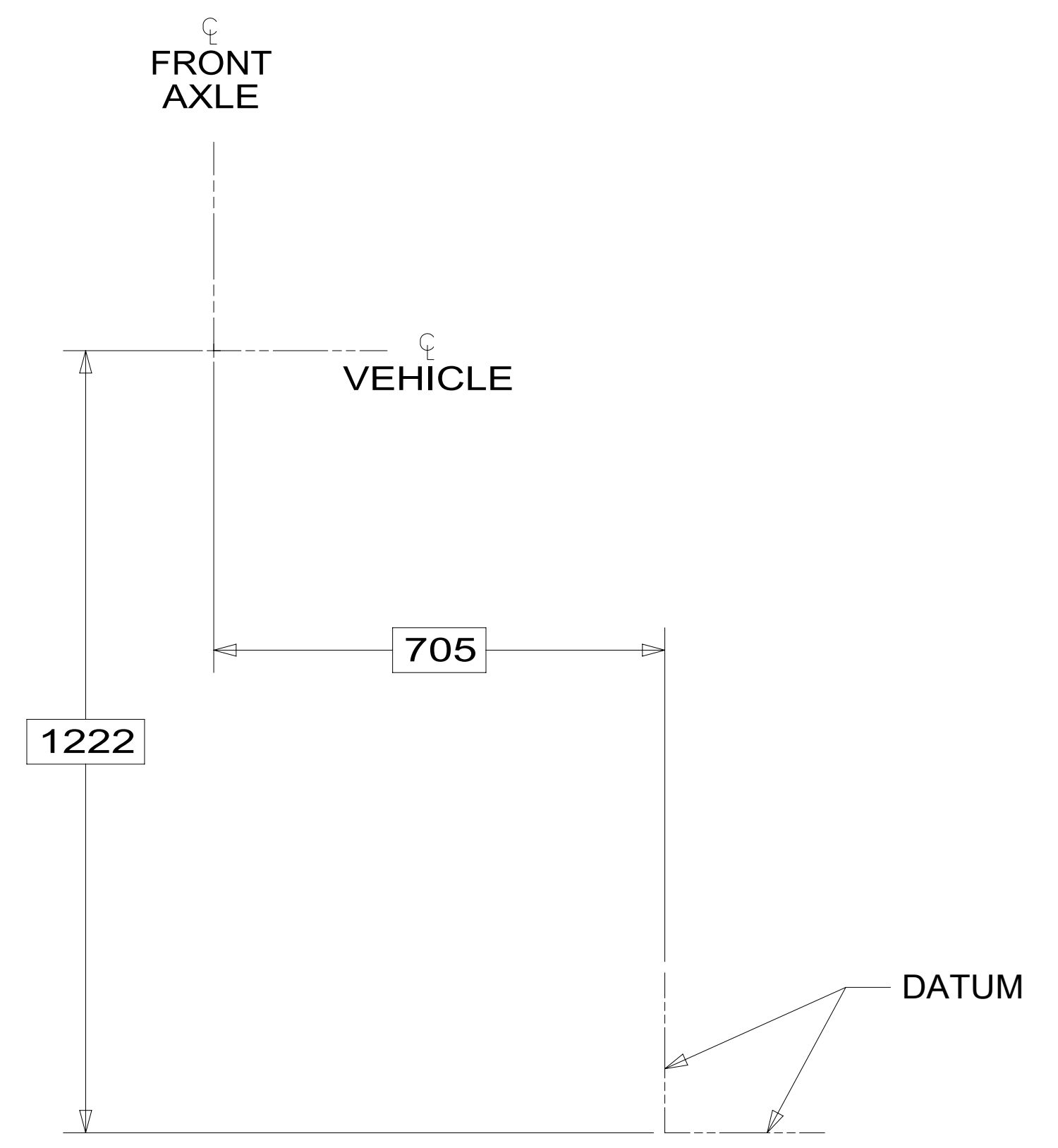


B

B

A

A



**TOP VIEW  
(SHOWING ONLY TANKS & DRAINS)**

|            |                       |        |               |
|------------|-----------------------|--------|---------------|
| FIRST USED | 15 J35P               |        |               |
| TITLE:     | DO NOT SCALE DRAWING  |        |               |
| TITLE:     | DRAINAGE SYSTEM INSTL |        |               |
| SHEET 4    | PART NO               | 188786 | REV           |
|            |                       |        | 1 09-Jul-2015 |

\*188786\*

8

7

6

5

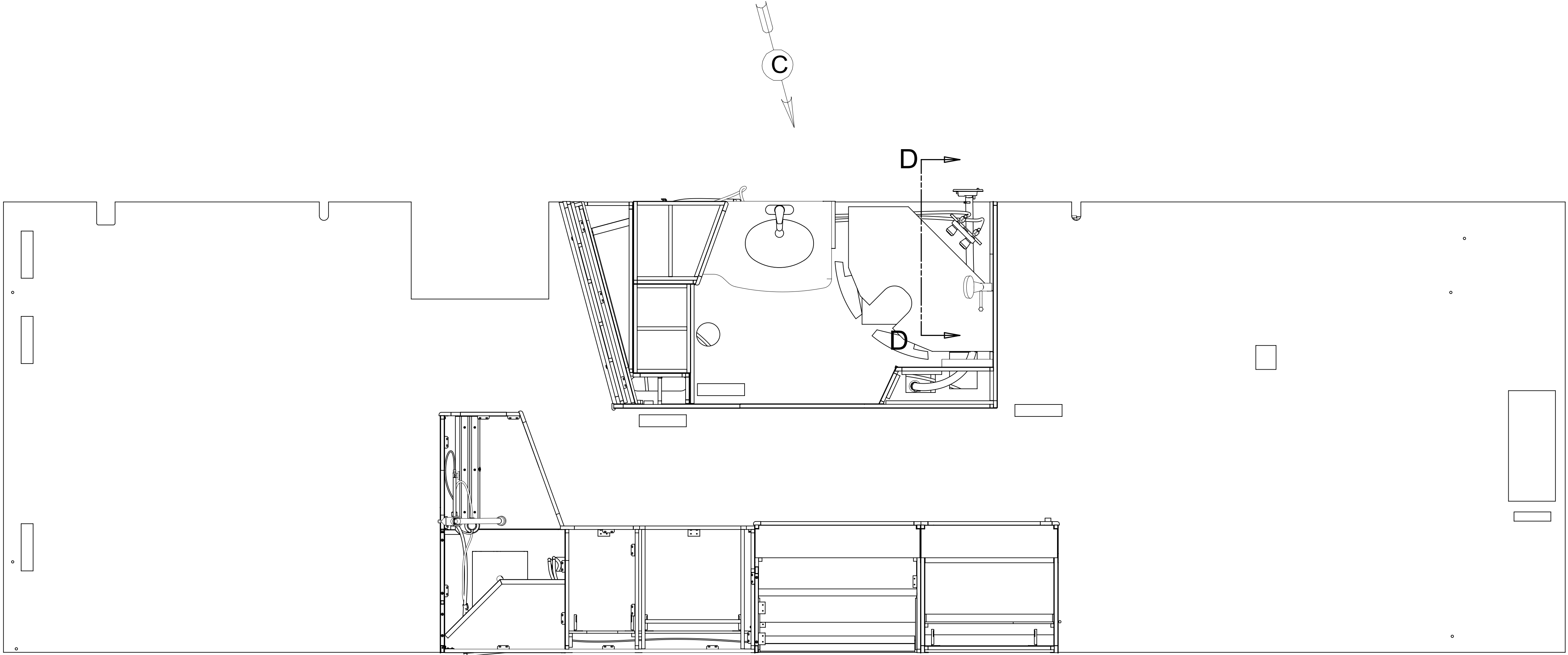
4

3

2

1

|          |                 |        |           |
|----------|-----------------|--------|-----------|
| RELEASE  | REV/DATE        | DWG NO | 188785    |
| REV ZONE | REVISION RECORD | DATE   | DFTR-ORIG |



- (1BT) WATER HEATER, TANKLESS
- (1B2) WTR HTR-10GAL/ELEC/LP/MTRRID
- (21M) WASHER/DRYER PREP
- (21S) WASHER & DRYER-PAIR

8. ALL CRIMP FITTINGS TO 1/2" PEX TUBING REQUIRE 1/2" CLAMP 140171-03-000.
7. ALL CRIMP FITTINGS TO 5/8" PEX TUBING REQUIRE 5/8" CLAMP 140171-04-000.
- 6 LABEL HOT AND COLD SUPPLY TUBES AND TAPE FITTING TO TUBE BEFORE CABINET SET TO PREVENT MOVEMENT.
- 5 ADD PIPE WRAP (LADDER SCRAP 110157-02-000) INSULATION.
- 4 ADD TEFLON TAPE 010405-02-000.
3. ALL TUBING TO BE SECURED AT 1200 INTERVALS MAXIMUM WITH CLAMP 010495-01-000 AND SCREW 000G67-10-12U OR EQUIVALENT.
2. TUBING TO BE INSTALLED WITH SUFFICIENT SLOPE TO PROVIDE DRAINAGE TO NEAREST VALVE.
1. PLASTIC FITTINGS TO BE SEALED WITH SEALANT 084456-01-000.

NOTES:

**WINNEBAGO** INDUSTRIES, INC. COPYRIGHT 2014

|      |                                   |
|------|-----------------------------------|
| DFTR | ORIG. DATE                        |
| CHKR | ALL DIMENSIONS ARE IN MILLIMETERS |
| P.E. |                                   |
| M.E. | FIRST USED                        |
| DSNR | 15 J35P                           |

UNSPECIFIED TOLERANCES ARE:

|                  |        |
|------------------|--------|
| WHOLE DIM (X)    | : 3    |
| ONE-PLACE (X.X)  | : 1.5  |
| TWO-PLACE (X.XX) | : 0.50 |
| ANGLE            | : 1°   |

THIRD ANGLE PROJECTION

DO NOT SCALE DRAWING REFER TO ES0018 FOR FASTENER TIGHTENING GUIDELINES

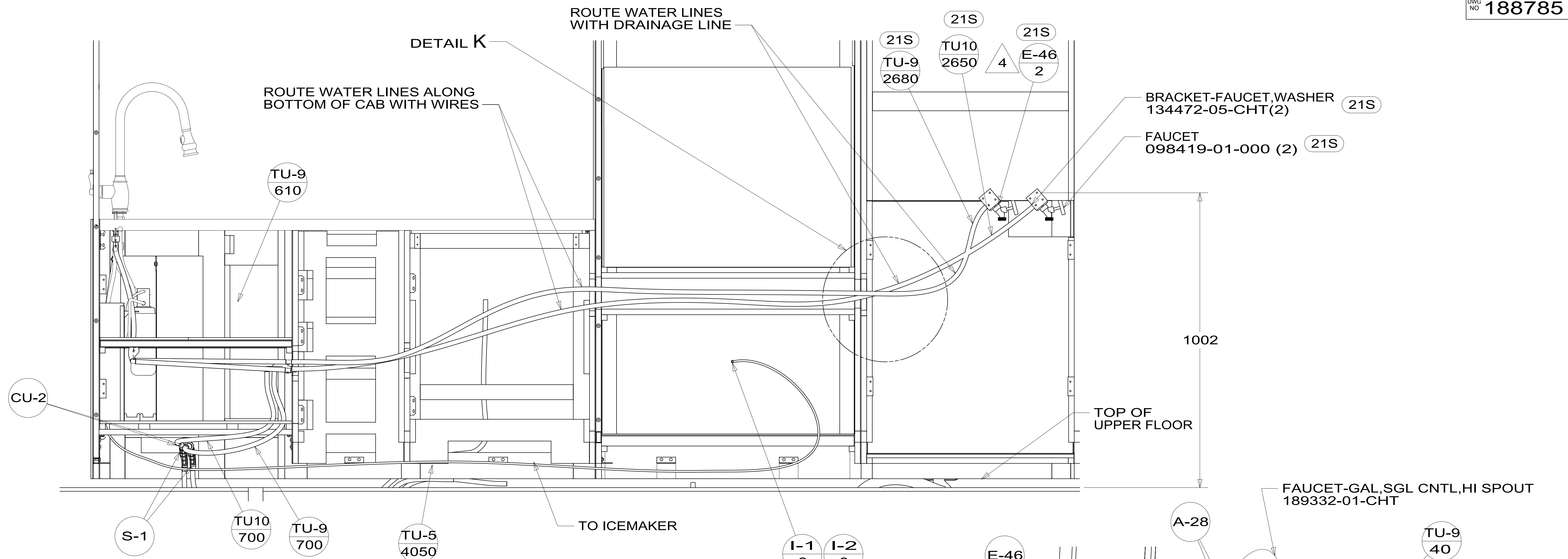
TITLE: **WATER SYSTEM INSTL**

SHEET 1 OF 4 PART NO **188785** REV

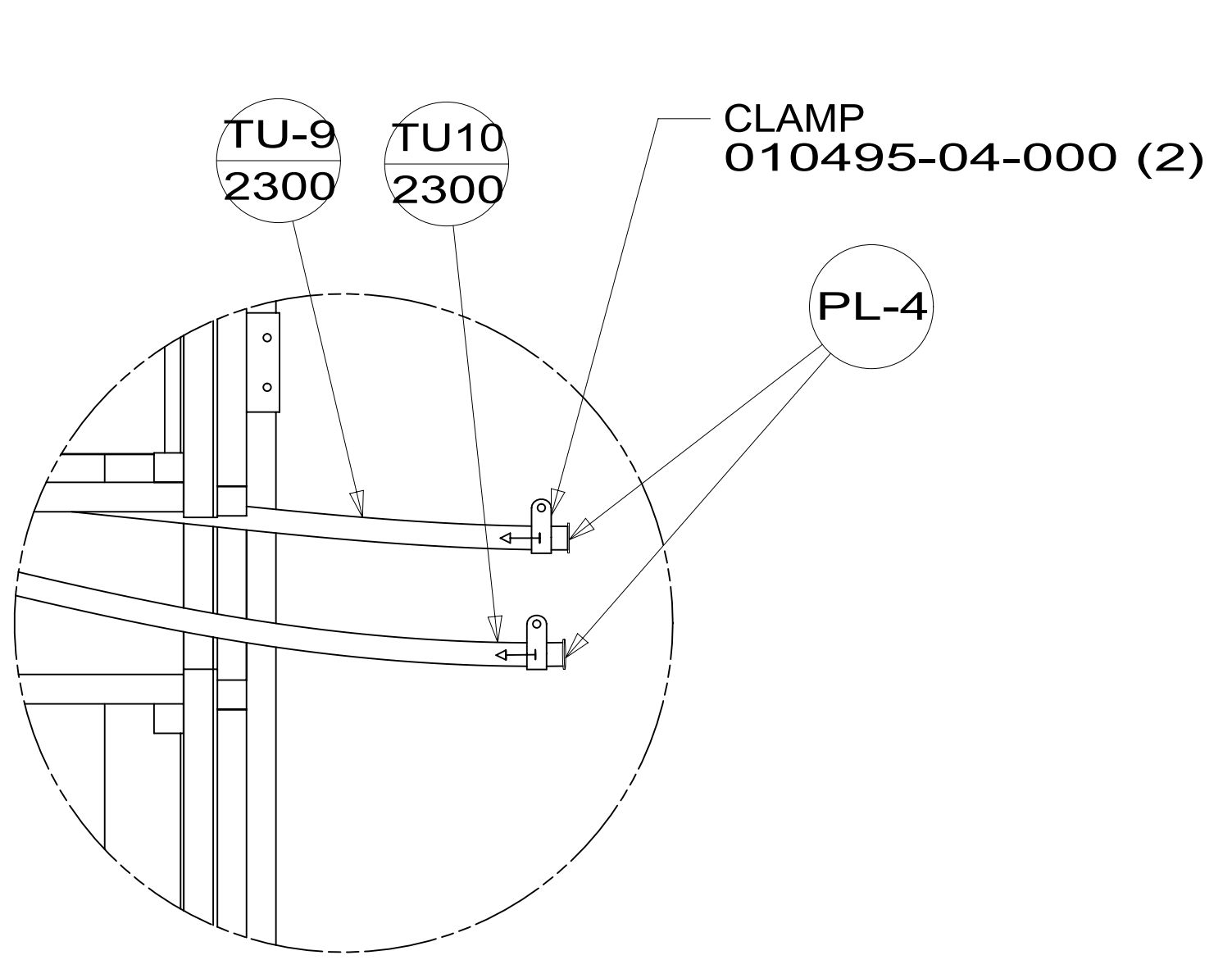
REF: 1 14-Jul-2015

FOR WATER CALLOUTS SEE DWG NO 116230-01-000

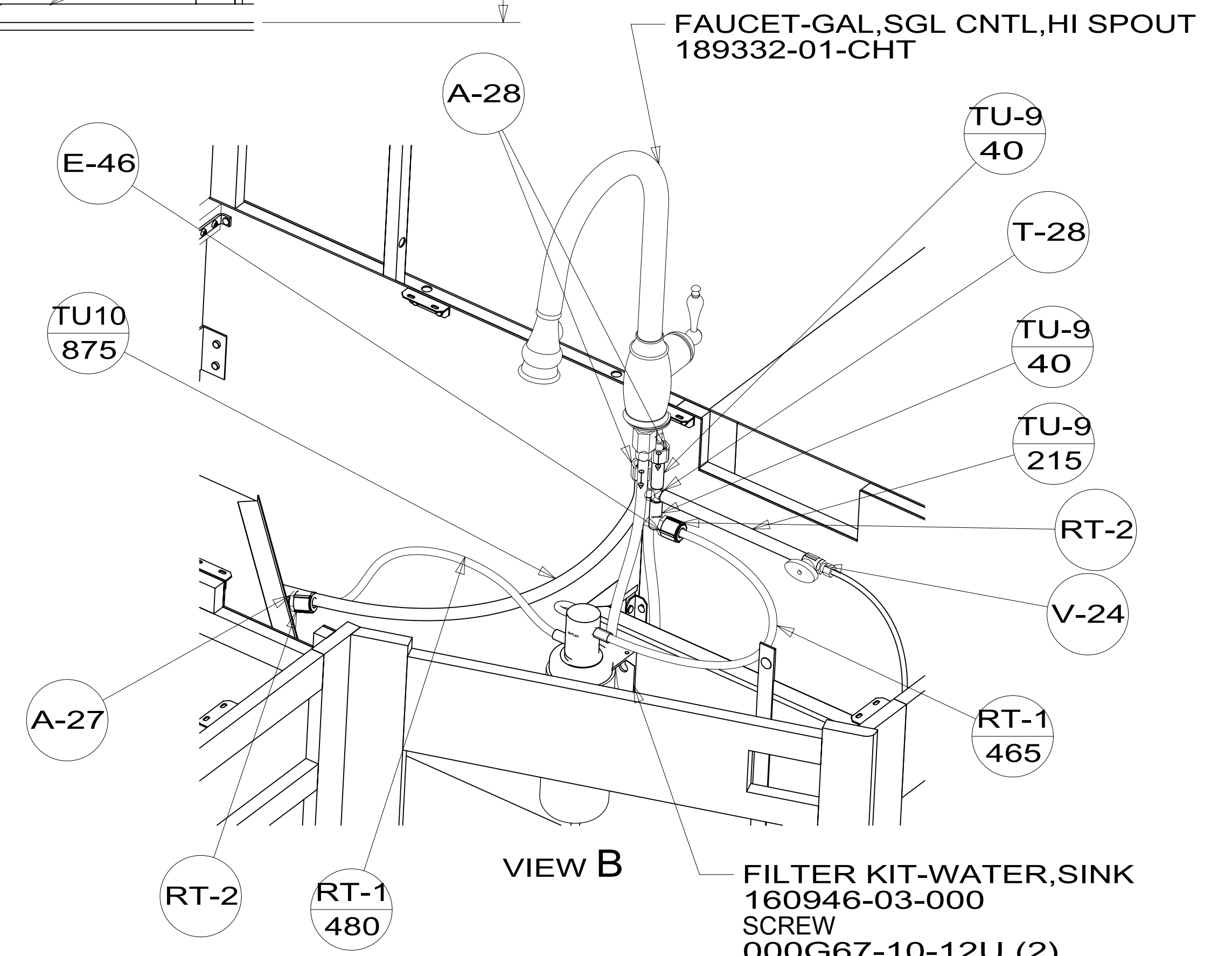
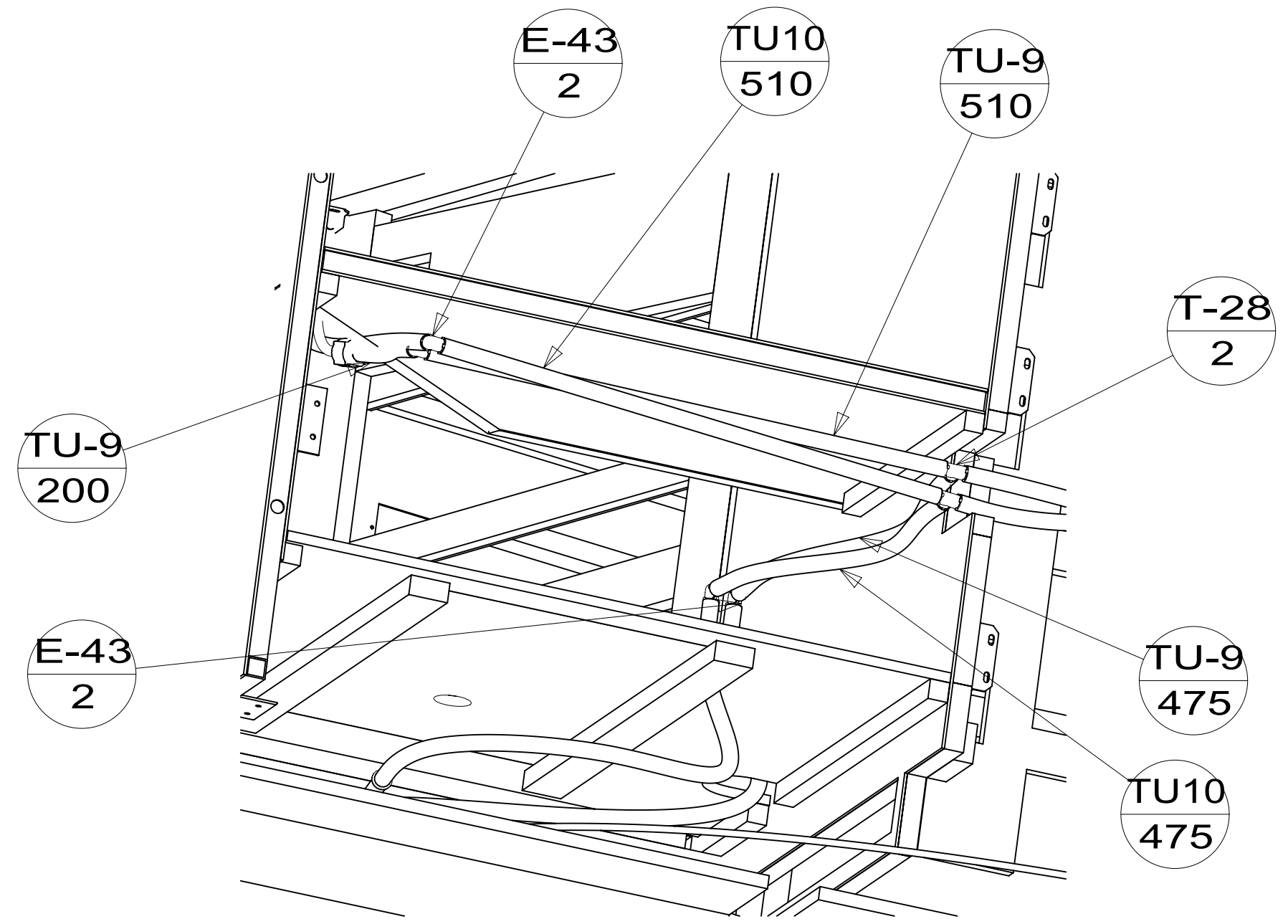
\*188785 \*A



VIEW A



DETAIL K  
21M



VIEW B

FILTER KIT-WATER, SINK  
160946-03-000  
SCREW  
000G67-10-12U (2)

|            |                      |             |
|------------|----------------------|-------------|
| FIRST USED | 15 J35P              |             |
| TITLE:     | DO NOT SCALE DRAWING |             |
|            | WATER SYSTEM INSTL   |             |
| SHEET 2    | PART NO              | 188785      |
|            | REV                  | 1           |
|            |                      | 14-Jul-2015 |

\*188785\*

PANEL-SHOWER  
167738-02-CHT

4 E-44

TU-9  
1570

TU10  
1520

E-9

E-9

FAUCET-LAV  
165730-01-CHT

E-46

BREAKER-VACUUM  
125697-04-000  
MUST BE MOUNTED ABOVE  
TOILET FLOOD LEVEL  
CHECK VALVE  
125697-03-000 4

A-27

R-5

R-4

T-28

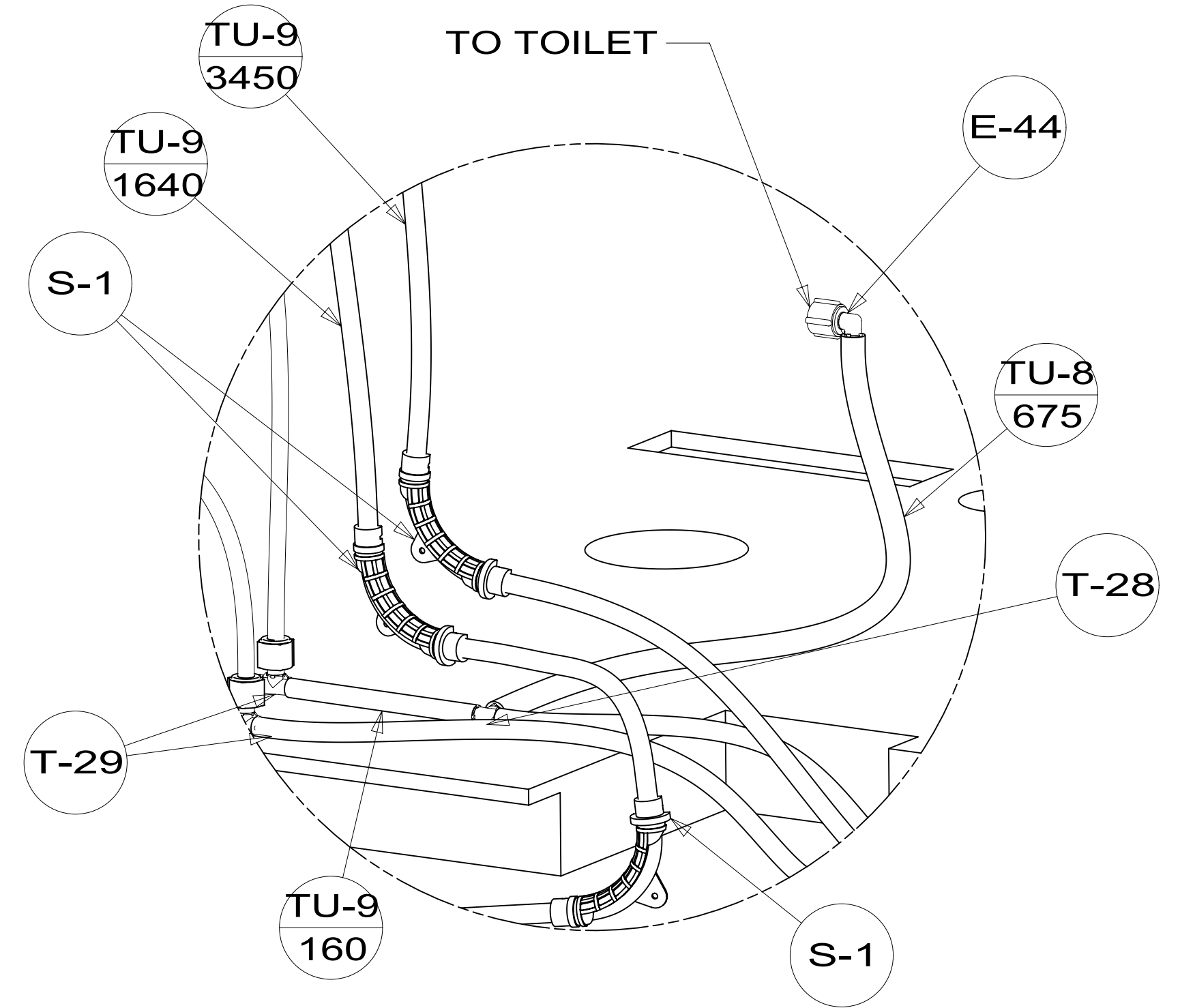
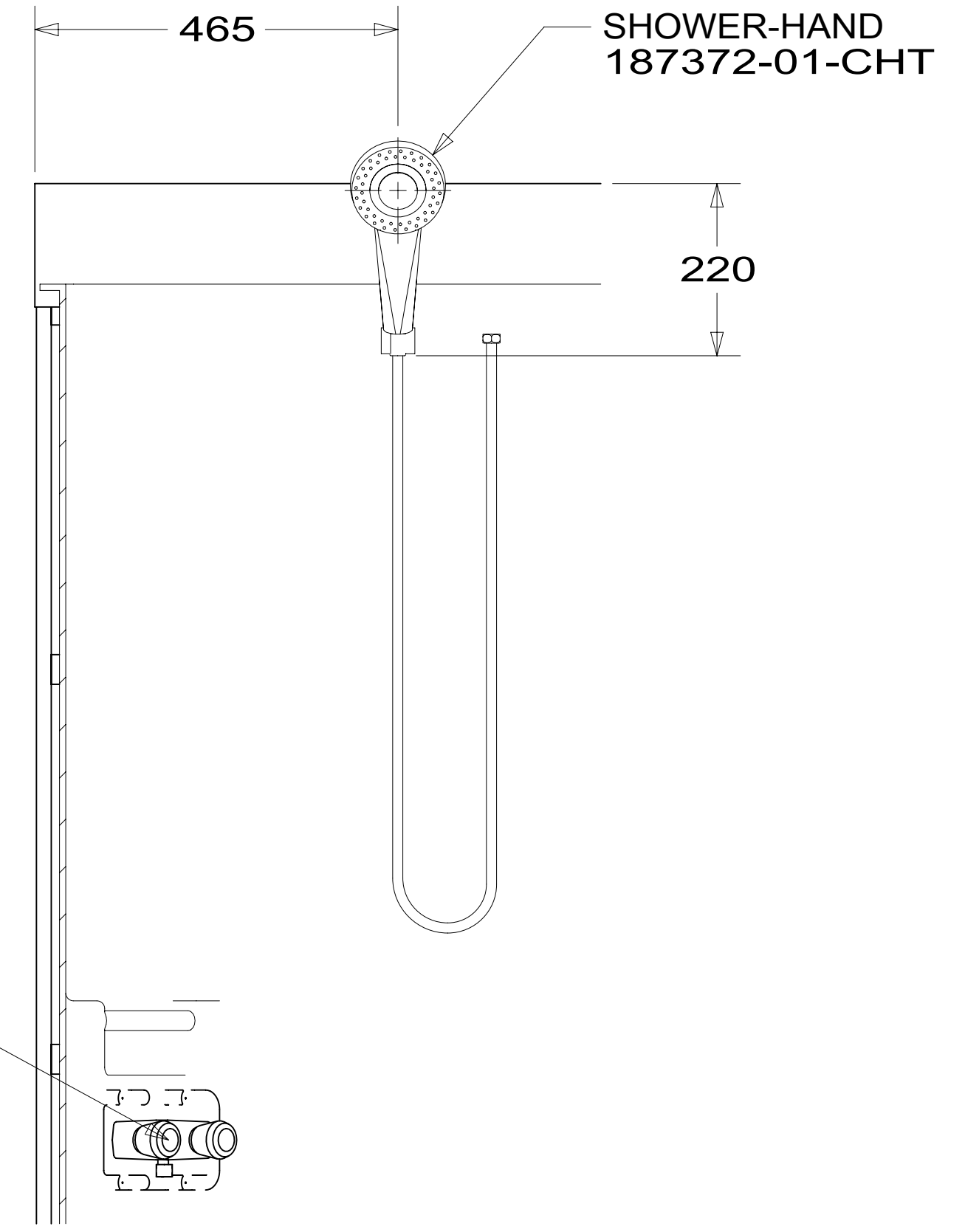
TU-9  
605

TU10  
610

E-21

VIEW C

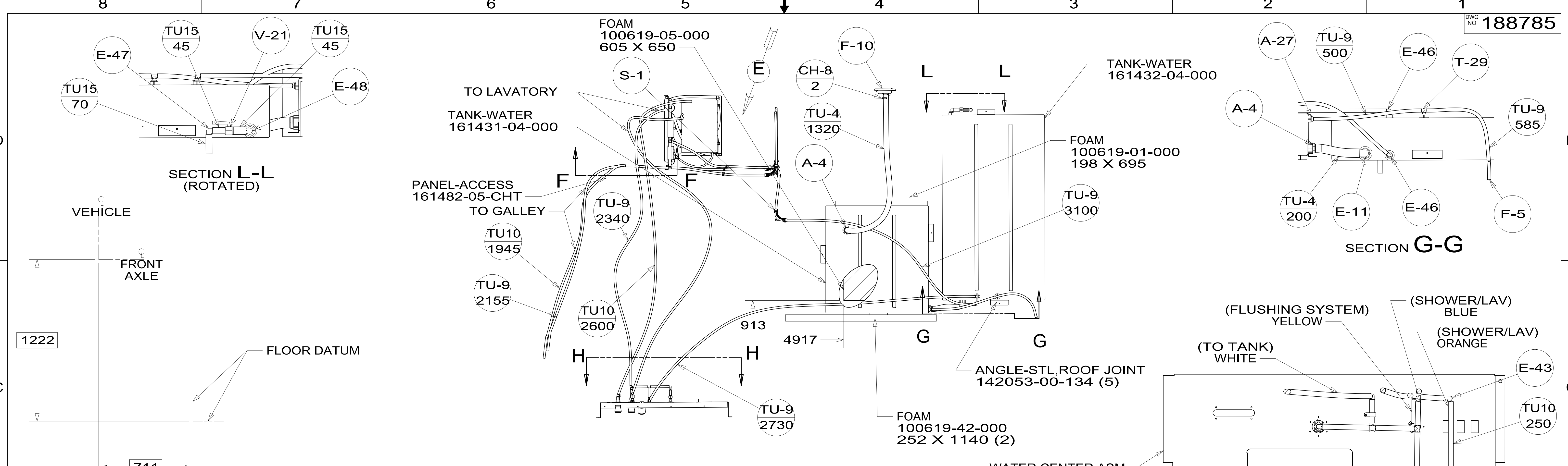
DETAIL J



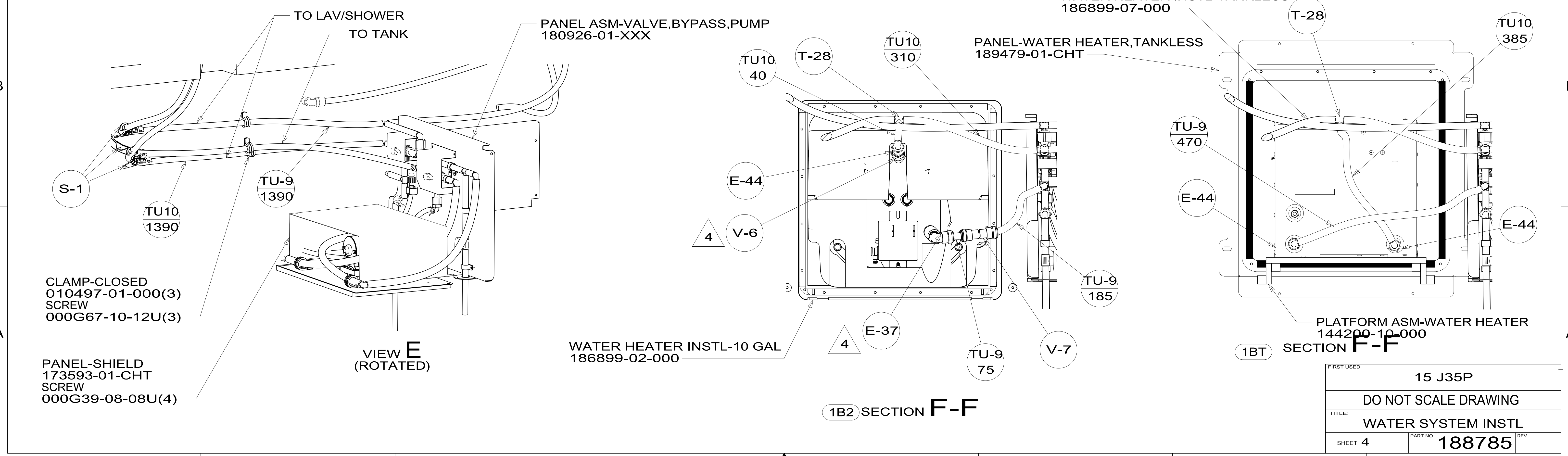
DETAIL J  
(SHOWN W/OUT CABINET)

|            |                      |               |
|------------|----------------------|---------------|
| FIRST USED | 15 J35P              |               |
| TITLE:     | DO NOT SCALE DRAWING |               |
| TITLE:     | WATER SYSTEM INSTL   |               |
| SHEET 3    | PART NO 188785       | REV           |
|            |                      | 1 14-Jul-2015 |

\*188785\*



TOP VIEW LINES UNDER FLOOR SHOWN ONLY



\*188785\*