

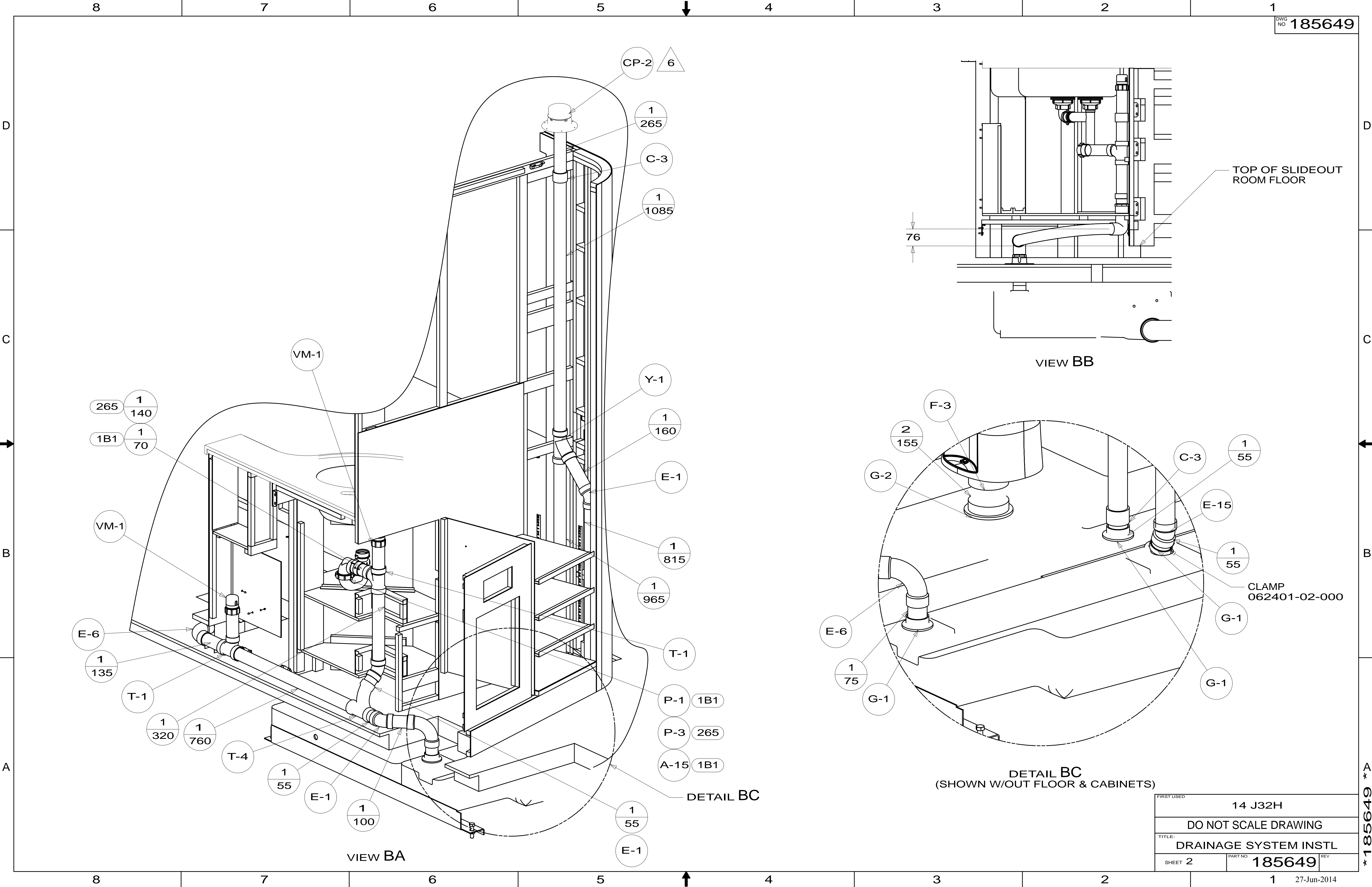
- 1D3 ENTERTAIN CENTR/EXT TV-DVD
- 1B1 CODES/STANDARDS-USA
- 265 CODES/STANDARDS-CSA/CMVSS

- NOTES:
1. SLOPE OF HORIZONTAL PIPING TO BE MINIMUM OF 3 PER 305 mm.
 2. SLOPE OF TRAP ARM MUST BE 6 PER 305 mm.
 3. ALL PIPE AND FITTINGS TO BE ASSEMBLED WITH SOLVENT 004020-01-000 (USA), 004020-02-000 (CAN)
 4. USE SMOOTH PLUMBERS PUTTY 167459-01-000 TO SEAL STRAINER (0.2 PER STRAINER).
 5. SEAL AROUND SHOWER WITH SILICONE.
 6. VENT PIPE MUST PROJECT 51 MIN AND 64 MAX ABOVE ROOF FOR PROPER FIT AND FUNCTION. ADD S-1 (116666-01-CHT SEAL-VENT PIPE) AROUND PIPE ON ROOF BEFORE CAP IS INSTALLED.
 7. APPLY PRIMER 126427-02-000 AND CEMENT 126427-01-000 BETWEEN ELBOW AND FLEX PIPE.
 8. SECURE DRAINAGE PIPES TO CABINET USING WIRE TIE 108046-02-000, AND SCREW 000G67-10-12U AT INTERVALS OF NOT MORE THAN 4 FEET APART.

FOR DRAINAGE CALLOUTS SEE DWG NO 116229-01-000

		COPYRIGHT 2014 WINNEBAGO INDUSTRIES, INC.
DTR	ORIG. DATE	
CHKR	ALL DIMENSIONS ARE IN MILLIMETERS	
P.E.		
M.E.	FIRST USED	
DSNR	14 J32H	
UNSPECIFIED TOLERANCES ARE:		MATERIAL:
WHOLE DIM (X)	: 3	
ONE-PLACE (X.X)	: 1.5	
TWO-PLACE (X.XX)	: 0.50	
ANGLE	: 1°	
THIRD ANGLE PROJECTION		
DO NOT SCALE DRAWING		REFER TO ES0018 FOR FASTENER TIGHTENING GUIDELINES
TITLE: DRAINAGE SYSTEM INSTL		
SHEET 1 OF 4	PART NO 185649	REV
REF:	1	27-Jun-2014

* 185649 * A



265 1
140 1
1B1 1
70 1

VM-1

E-6

1 135

T-1

1 320

1 760

T-4

1 55

E-1

1 100

VIEW BA

CP-2 6

1 265

C-3

1 1085

Y-1

1 160

E-1

1 815

1 965

T-1

P-1 1B1

P-3 265

A-15 1B1

DETAIL BC

1 55

E-1

76

VIEW BB

TOP OF SLIDEOUT ROOM FLOOR

F-3

2 155

G-2

C-3

1 55

E-15

1 55

CLAMP 062401-02-000

G-1

E-6

1 75

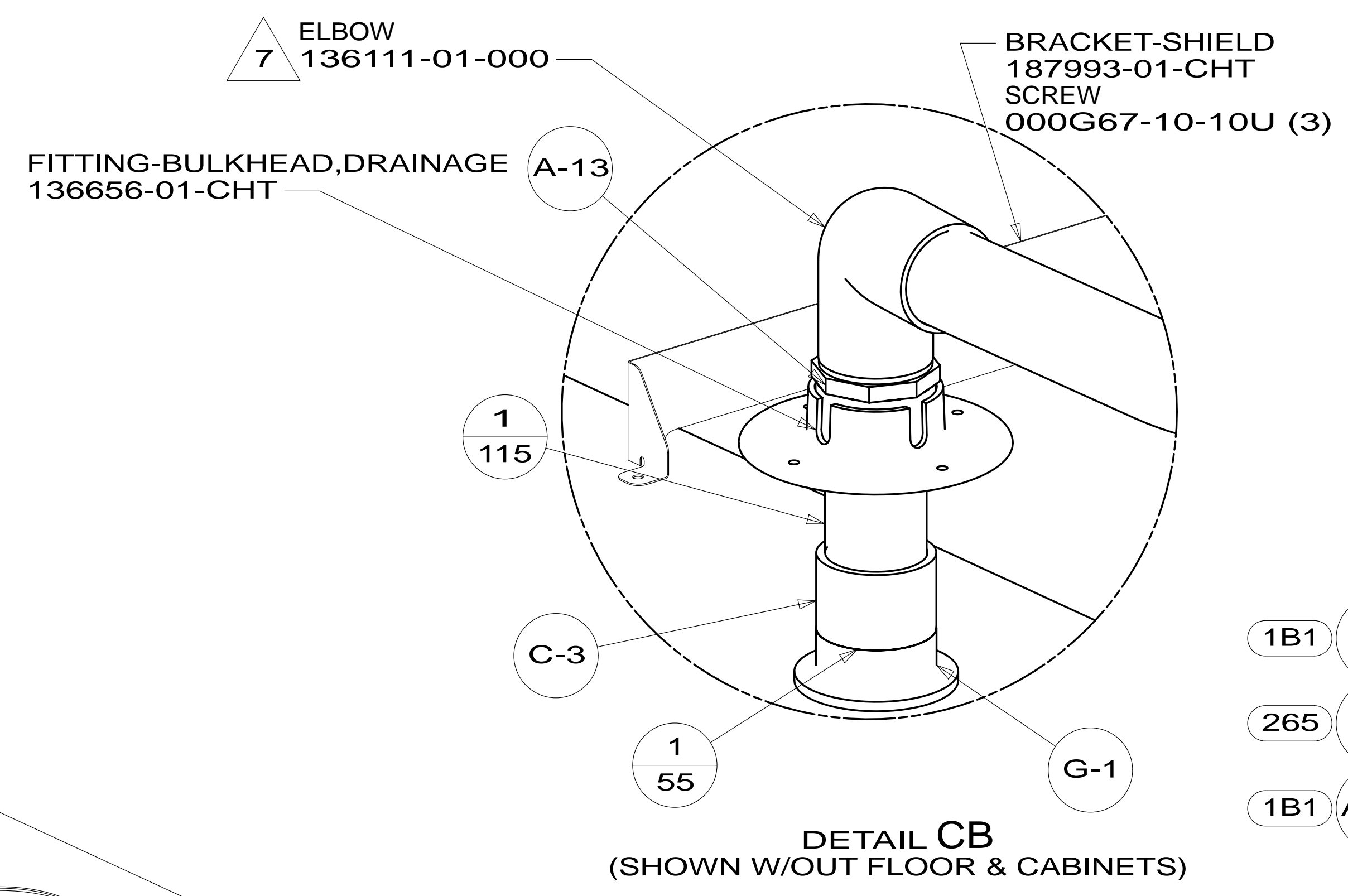
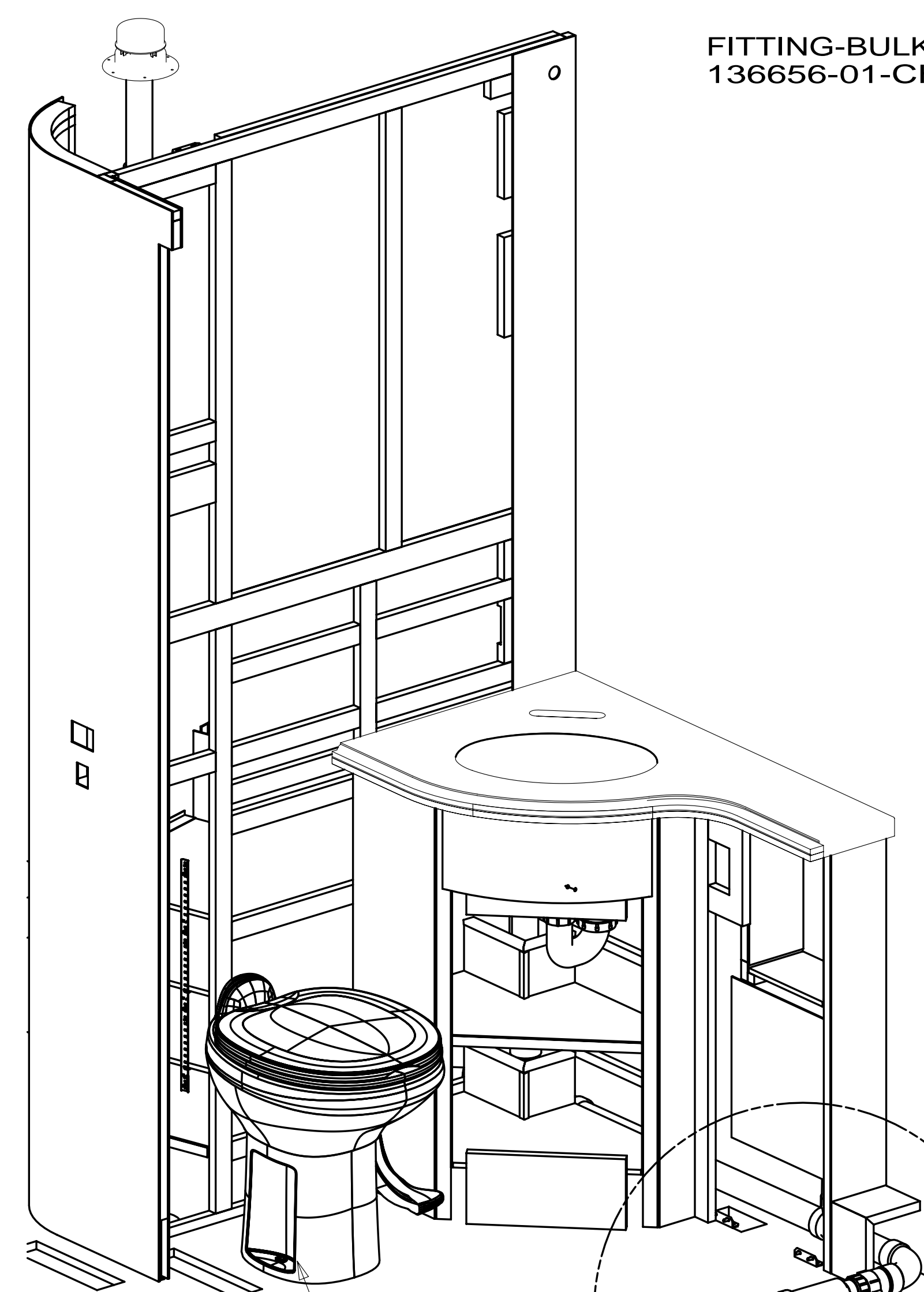
G-1

G-1

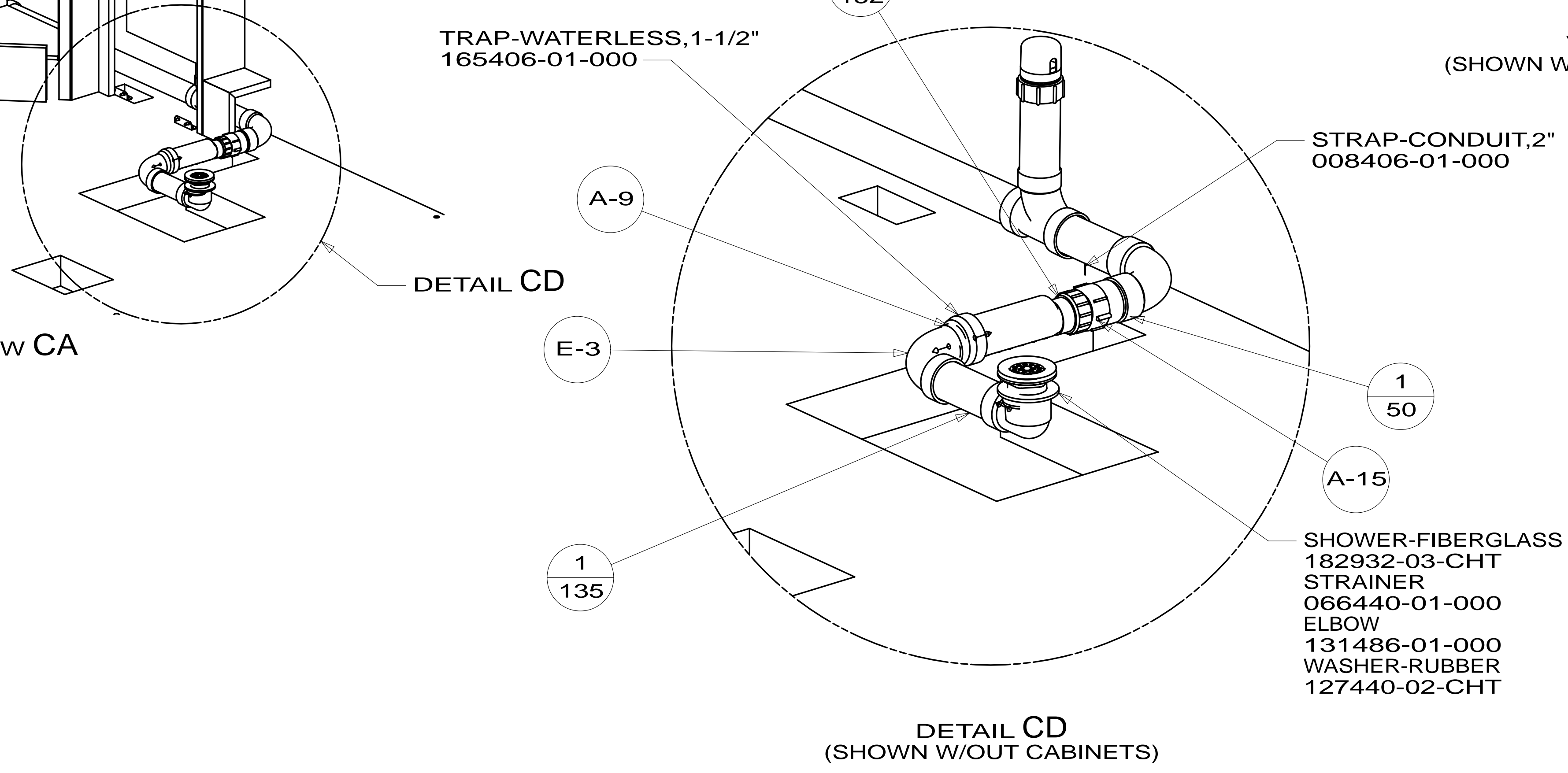
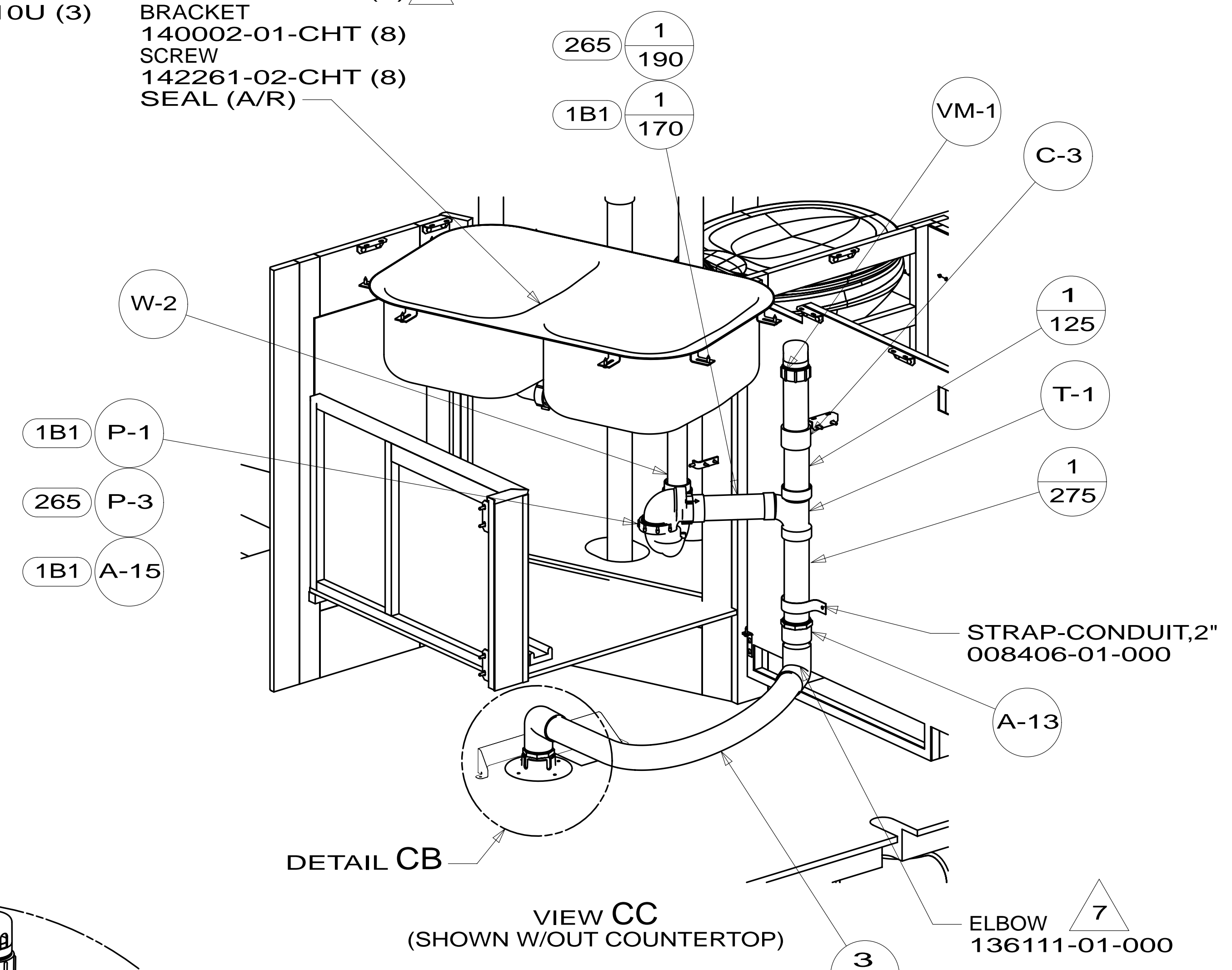
DETAIL BC (SHOWN W/OUT FLOOR & CABINETS)

FIRST USED	14 J32H	
DO NOT SCALE DRAWING		
TITLE: DRAINAGE SYSTEM INSTL		
SHEET 2	PART NO 185649	REV
		27-Jun-2014

* 185649 * A



- SINK
173783-01-CHT
- STRAINER
092303-01-000 (2) 4
- BRACKET
140002-01-CHT (8)
- SCREW
142261-02-CHT (8)
- SEAL (A/R)



TOILET
160815-01-CHT
SCREW
087721-01-000 (8)

VIEW CA

DETAIL CD

FIRST USED	14 J32H	
DO NOT SCALE DRAWING		
TITLE: DRAINAGE SYSTEM INSTL		
SHEET 3	PART NO 185649	REV
		27-Jun-2014

* 185649 * A

BRACKET-TANK,HOLDING
162818-01-CHT
BOLT
000C12-08-32U (2)

TANK-HOLDING
161396-02-CHT

FOAM
100619-05-000
200 X 600

FOAM
100619-05-000
200 X 600

FOAM
100619-04-000
100 X 200

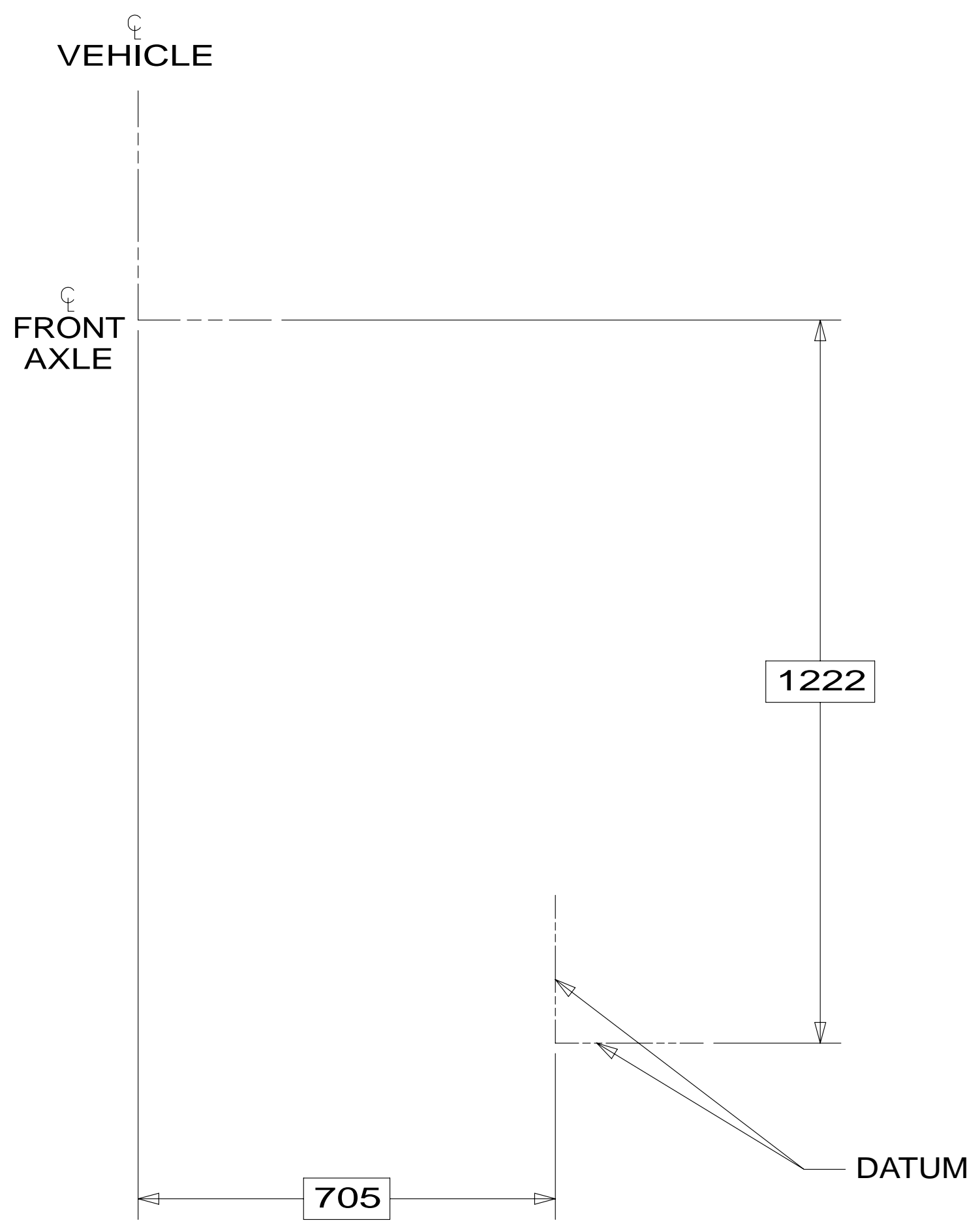
TANK-HOLDING
161397-02-CHT

PLATFORM-HOLDING TANK
126714-08-000

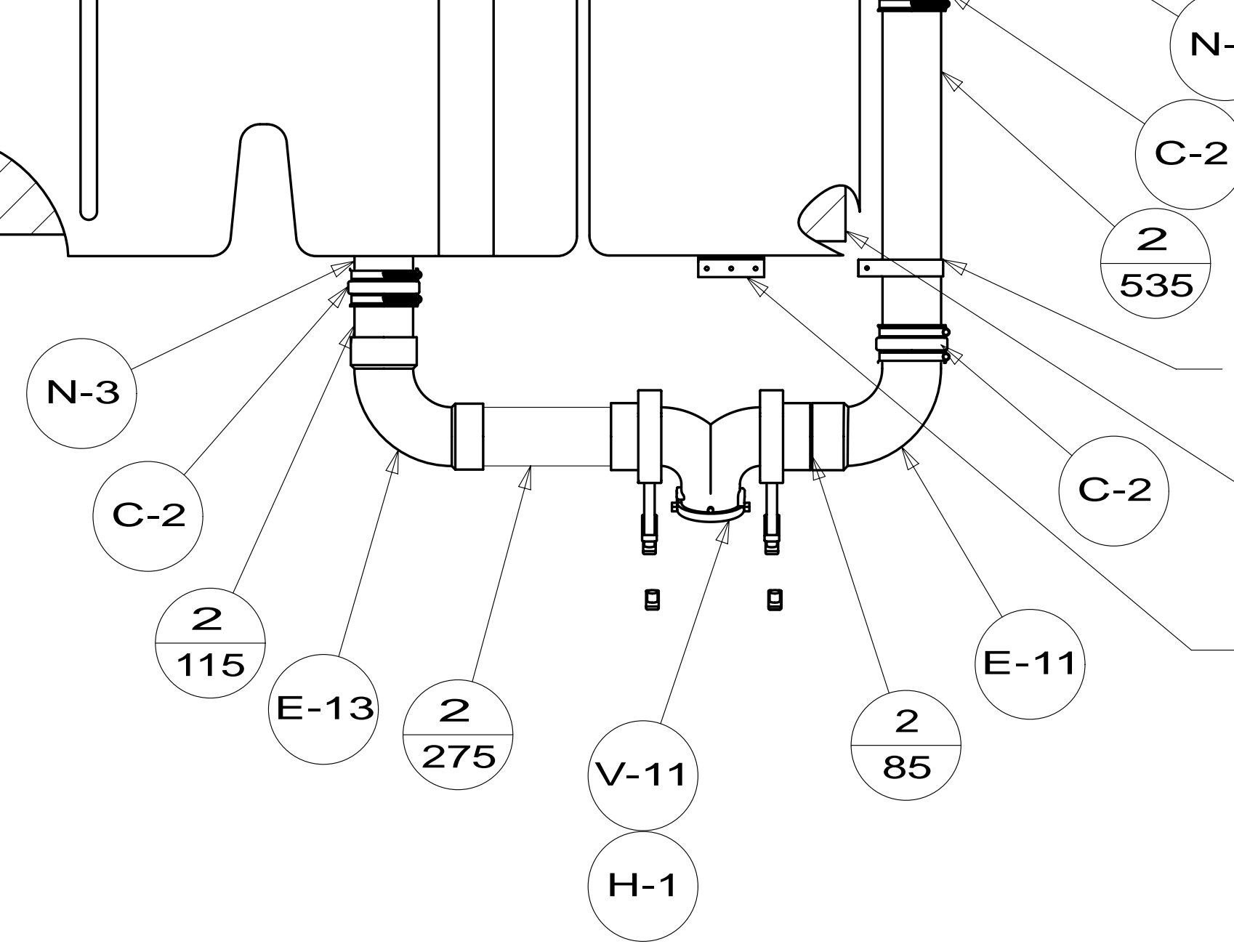
HOLDER-RING
141443-01-CHT

PLATFORM-HOLDING TANK
126714-42-000

BRACKET-ANGLE,W/HOLES
094756-02-CHT

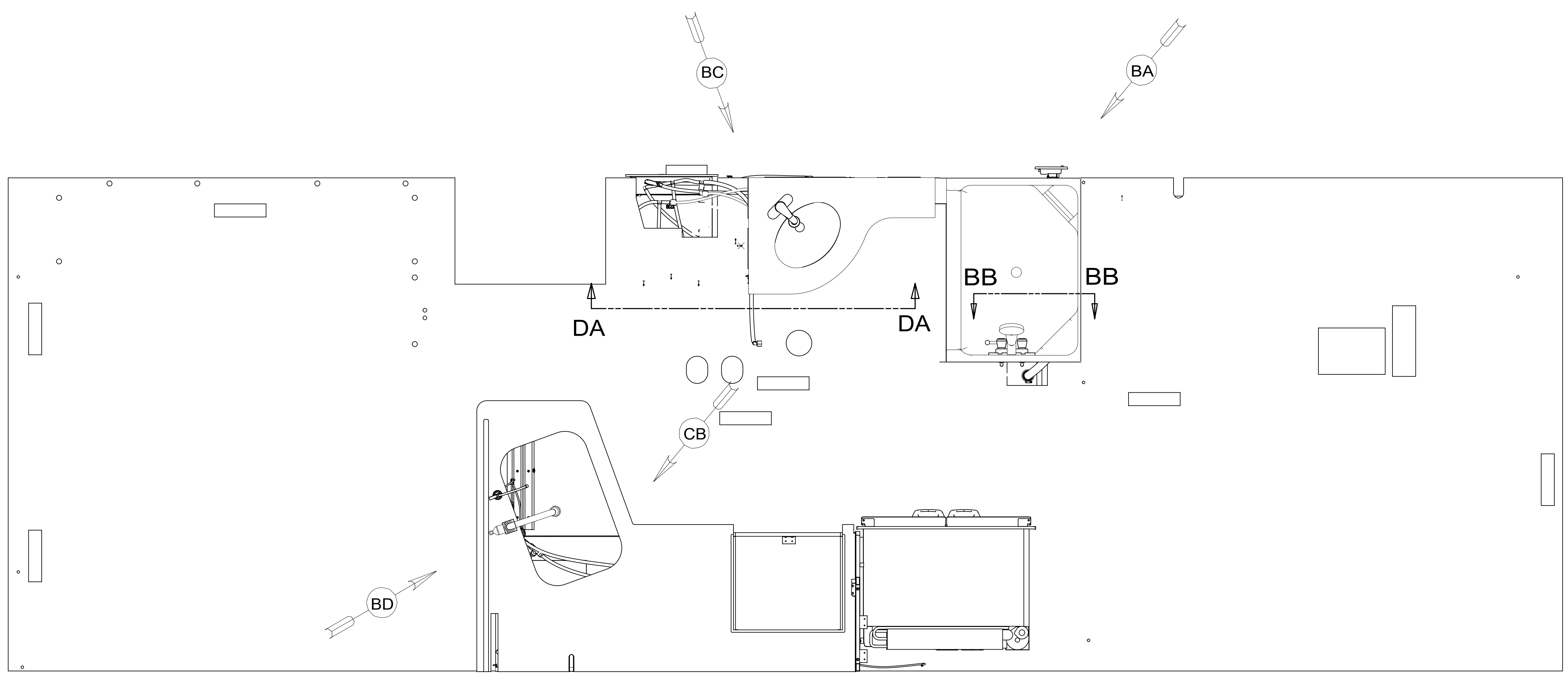


TOP VIEW
(SHOWING TANKS AND DRAINS)



FIRST USED	14 J32H		
TITLE:	DO NOT SCALE DRAWING		
TITLE:	DRAINAGE SYSTEM INSTL		
SHEET 4	PART NO	185649	REV
			27-Jun-2014

* 185649 * A



- 144 REFRIGERATOR-DOUBLE DOOR
- 79W REFRIGERATOR - 4 DOOR
- 29B WATER PURIFIER
- 1B2 WTR HTR-10 GAL/ELEC/LP/MTRAIID
- 53E WATER SYS WINTERIZATION PKG

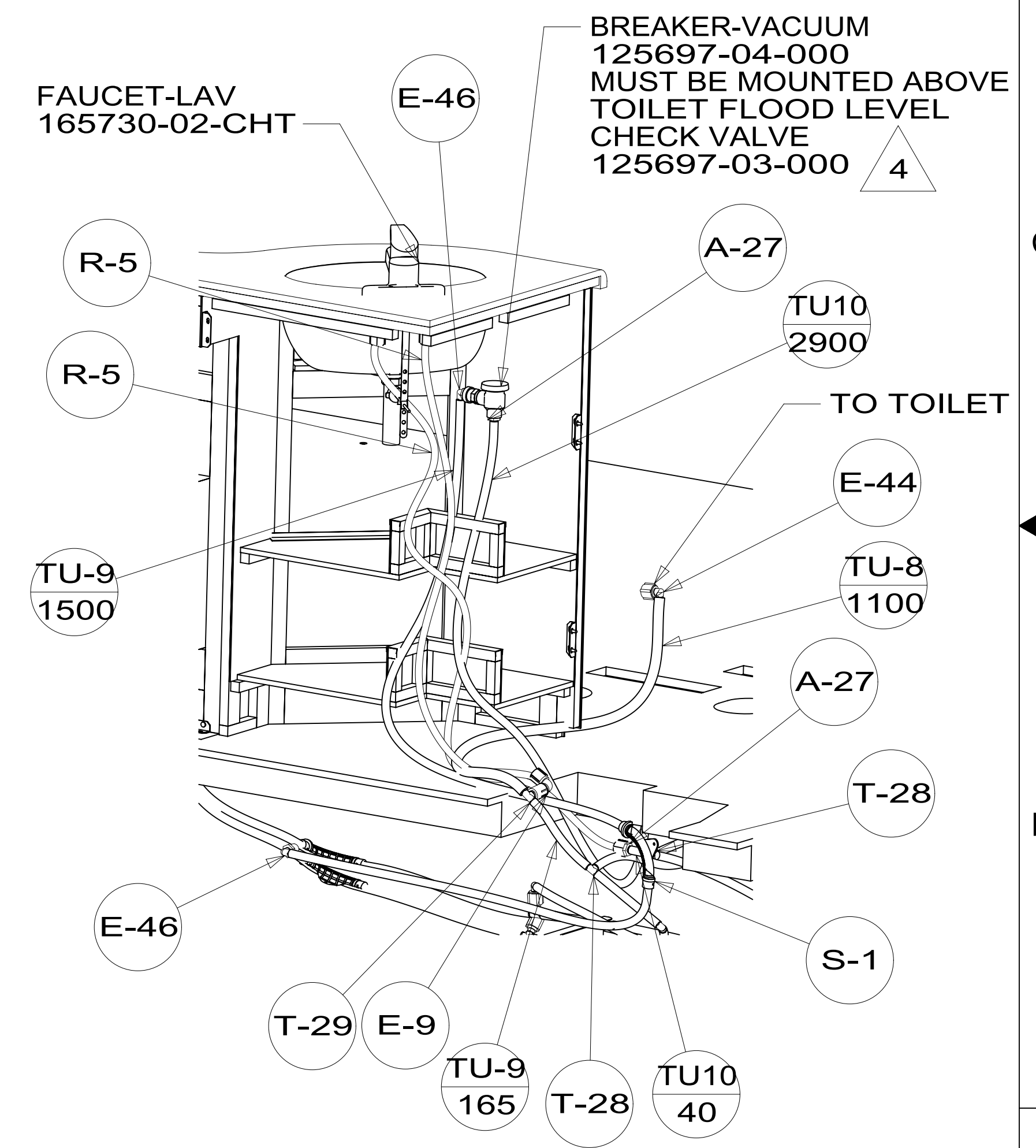
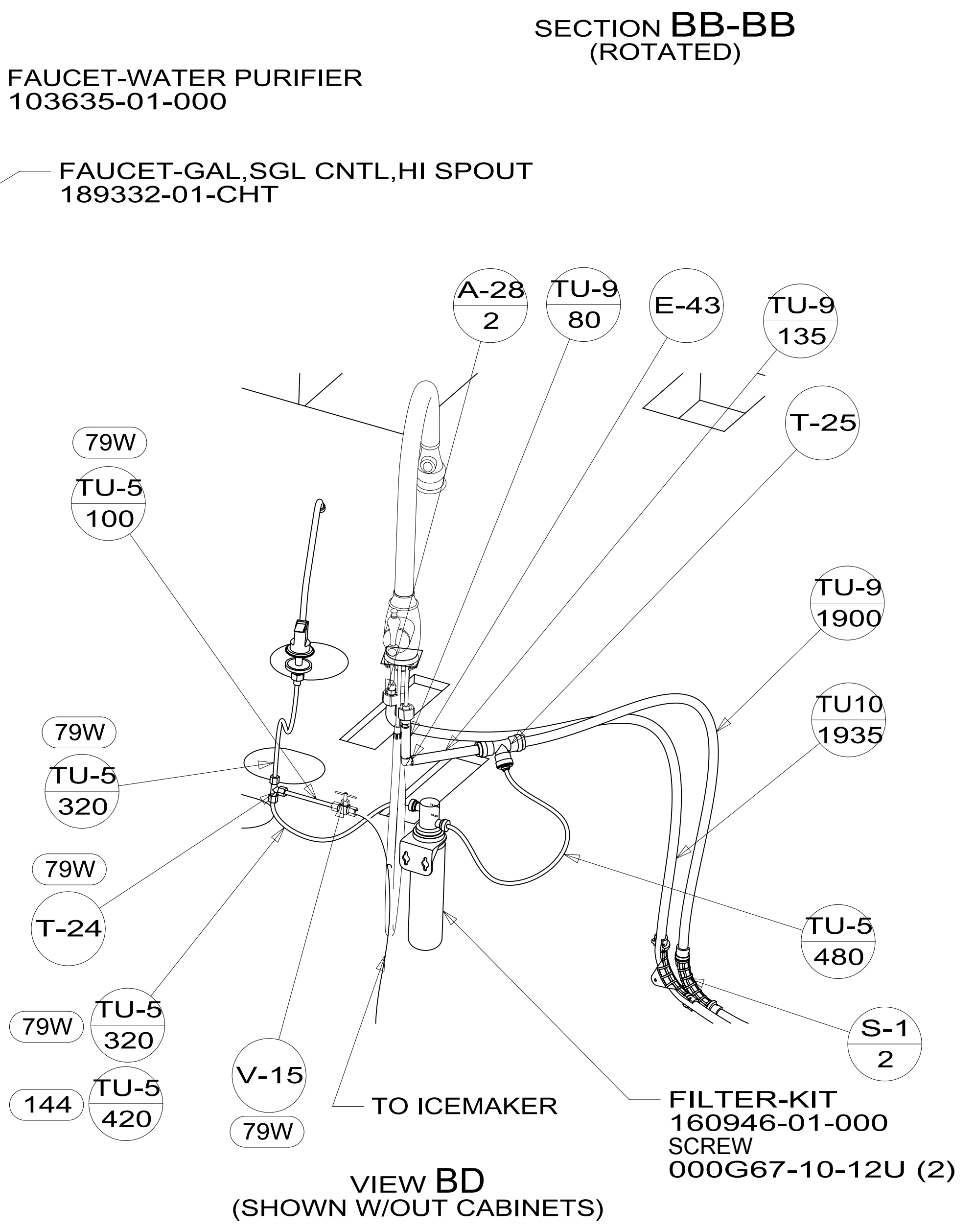
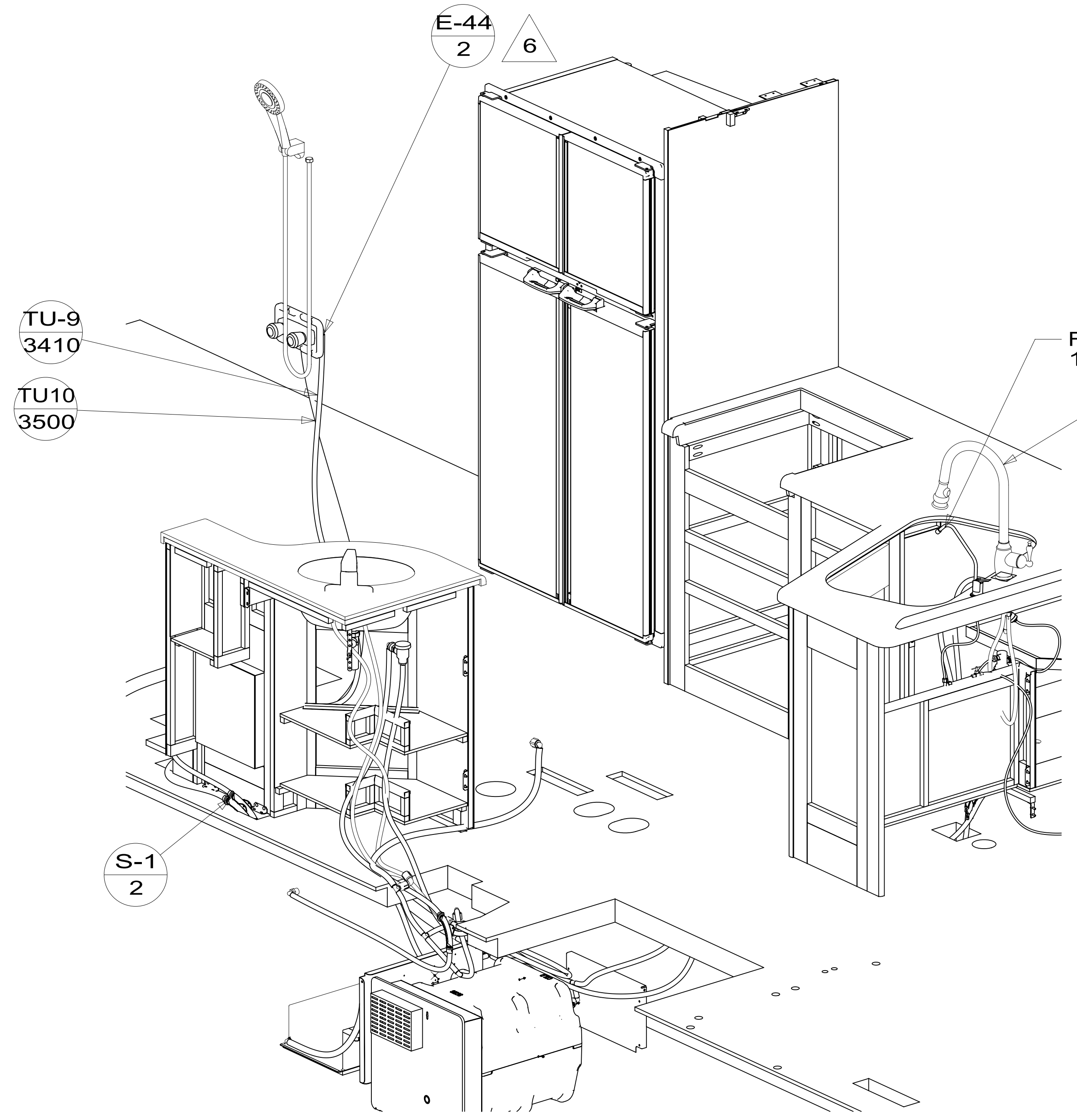
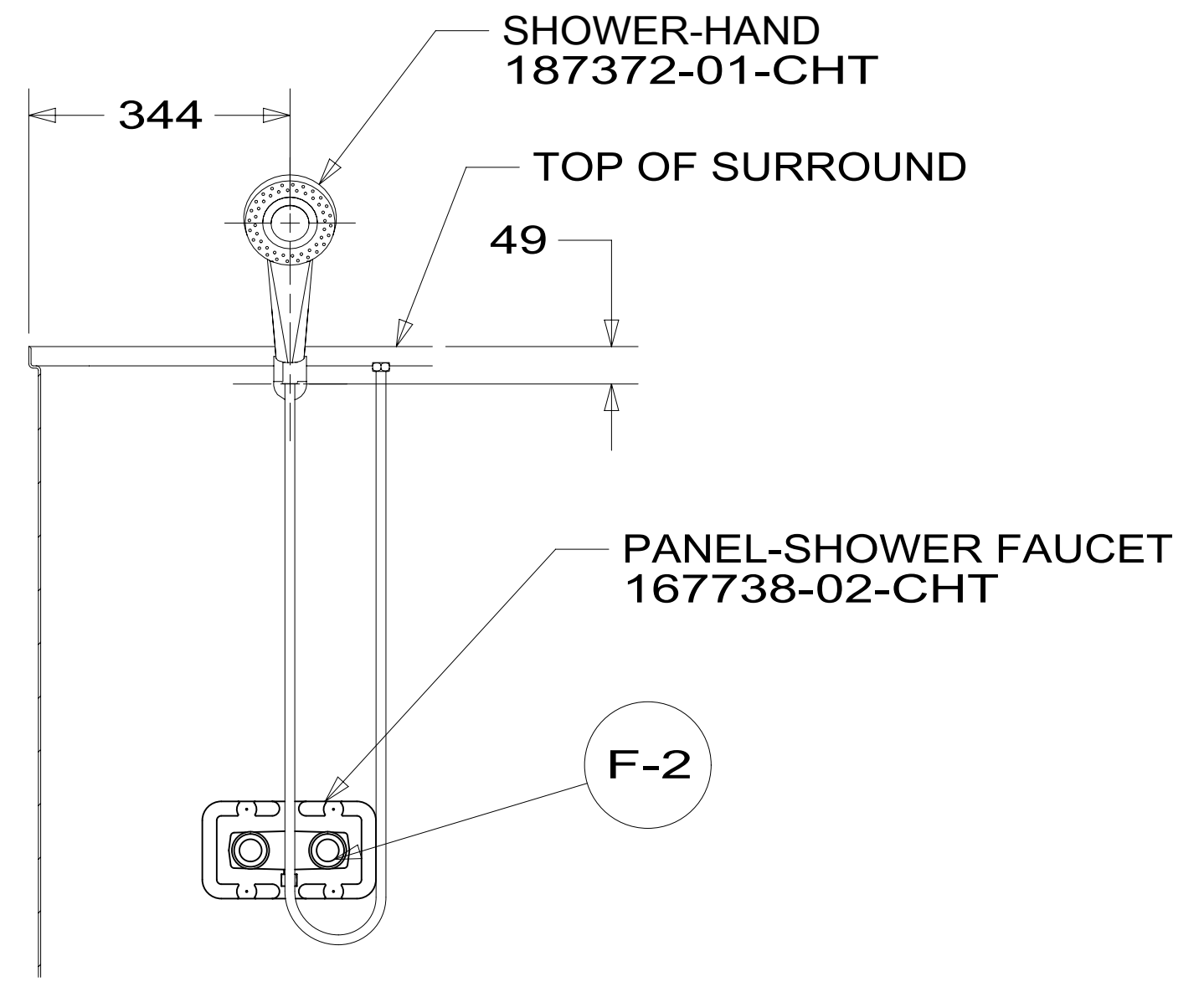
9. ALL CRIMP FITTINGS TO 3/4" PEX TUBING REQUIRE 3/4" CLAMP 140171-05-000.
8. ALL CRIMP FITTINGS TO 1/2" PEX TUBING REQUIRE 1/2" CLAMP 140171-03-000.
7. ALL CRIMP FITTINGS TO 5/8" FLEX TUBING REQUIRE 5/8" CLAMP 140171-04-000.
6. LABEL HOT AND COLD SUPPLY TUBES AND TAPE FITTING TO TUBE BEFORE CABINET SET TO PREVENT MOVEMENT.
5. ADD PIPE WRAP (LADDER SCRAP 110157-02-000) INSULATION.
4. ADD TEFLON TAPE 010405-02-000.
3. ALL TUBING TO BE SECURED AT 1200 INTERVALS MAXIMUM WITH CLAMP 010495-01-000 AND SCREW 000G67-10-12U OR EQUIVALENT.
2. TUBING TO BE INSTALLED WITH SUFFICIENT SLOPE TO PROVIDE DRAINAGE TO NEAREST VALVE.
1. PLASTIC FITTINGS TO BE SEALED WITH SEALANT 084456-01-000.

NOTES:

WINNEBAGO		<small>COPYRIGHT 2014 WINNEBAGO INDUSTRIES, INC.</small>	
DFTR	ORIG. DATE		
CHKR	ALL DIMENSIONS ARE IN MILLIMETERS		
P.E.	MATERIAL:		
M.E.	15 J32H		
DSNR	UNSPECIFIED TOLERANCES ARE:		
	WHOLE DIM (X)	: 3	
	ONE-PLACE (X.X)	: 1.5	
	TWO-PLACE (X.XX)	: 0.50	
	ANGLE	: 1°	
THIRD ANGLE PROJECTION			
DO NOT SCALE DRAWING	REFER TO ES0018 FOR FASTENER TIGHTENING GUIDELINES		
TITLE: WATER SYSTEM INSTL			
SHEET 1 OF 5	PART NO	189439	REV
REF:	1 11-Dec-2014		

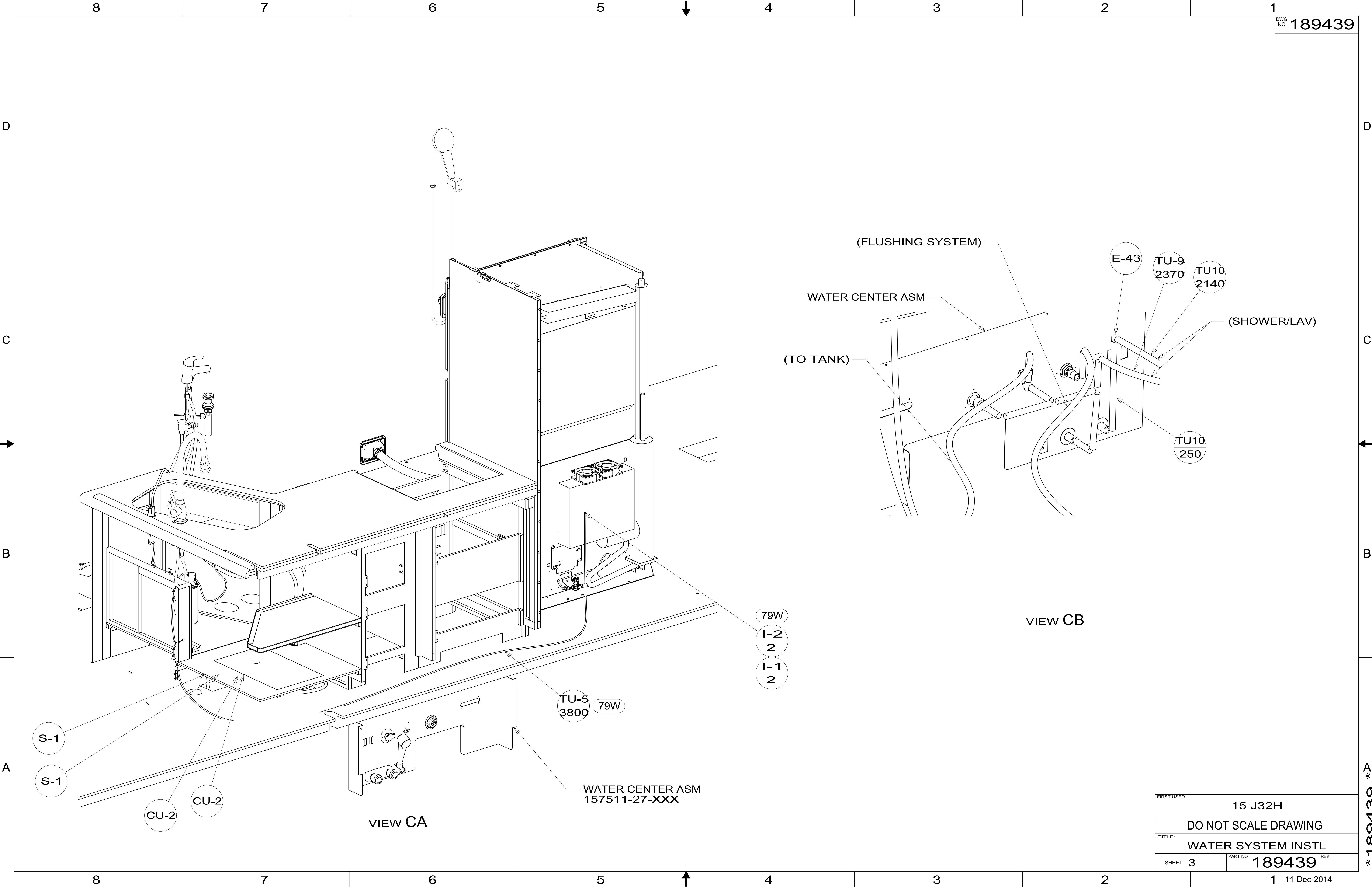
X-X
FOR
WATER
CALLOUTS
SEE DWG NO
116230-01-000

189439



FIRST USED	15 J32H	
TITLE:	DO NOT SCALE DRAWING	
SHEET 2	PART NO	189439
	REV	1
11-Dec-2014		

* 189439 *



(FLUSHING SYSTEM)

WATER CENTER ASM

(TO TANK)

E-43

TU-9
2370

TU10
2140

(SHOWER/LAV)

TU10
250

VIEW CB

79W
I-2
2
I-1
2

TU-5
3800 79W

WATER CENTER ASM
157511-27-XXX

VIEW CA

S-1

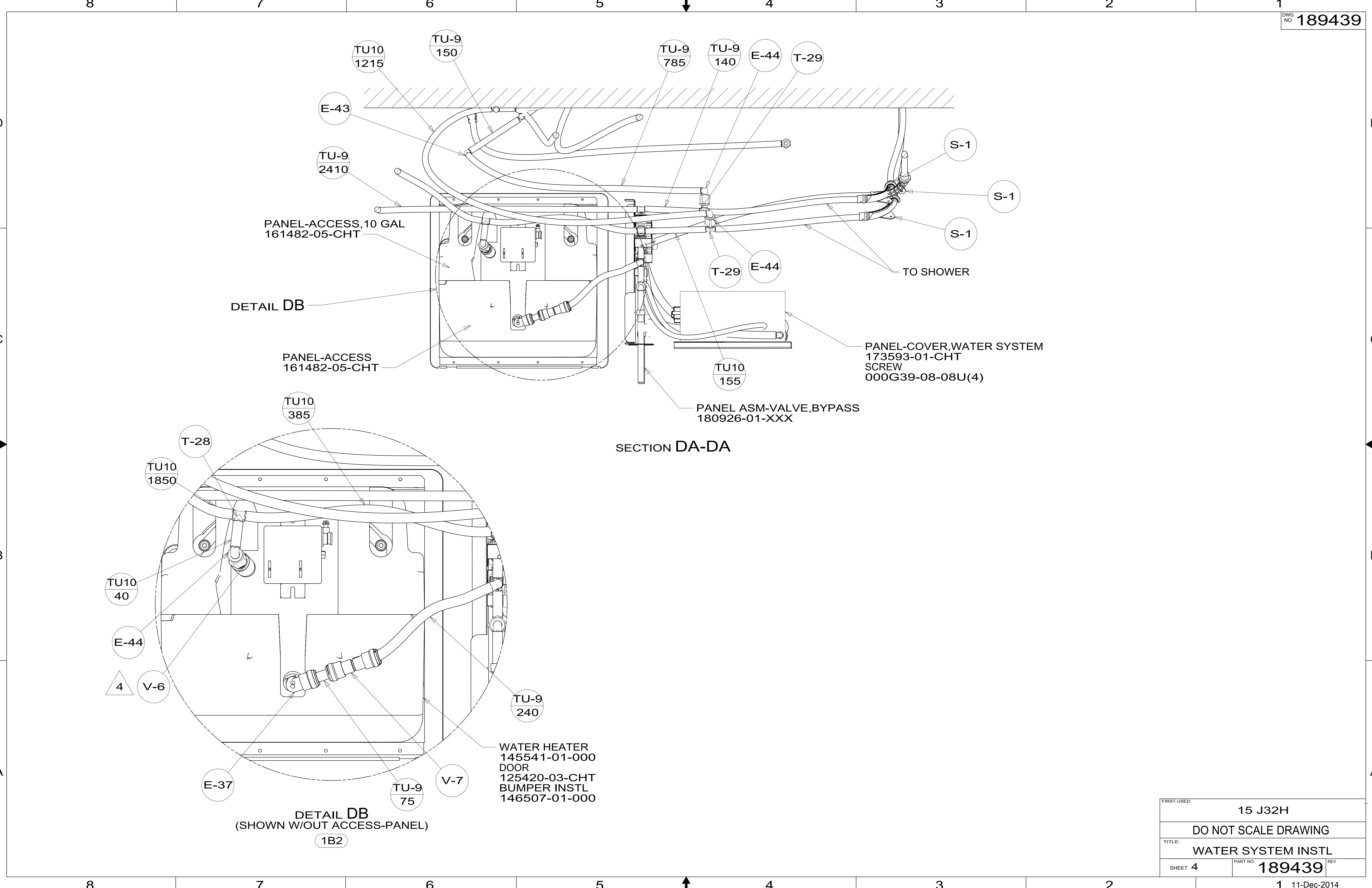
S-1

CU-2

CU-2

FIRST USED	15 J32H		
TITLE:	DO NOT SCALE DRAWING		
TITLE:	WATER SYSTEM INSTL		
SHEET 3	PART NO	189439	REV
			1 11-Dec-2014

189439



FIRST USED	15 J32H	
TITLE:	DO NOT SCALE DRAWING	
TITLE:	WATER SYSTEM INSTL	
SHEET 4	PART NO	189439
	REV	

189439

8

7

6

5

4

3

2

1

D

D

C

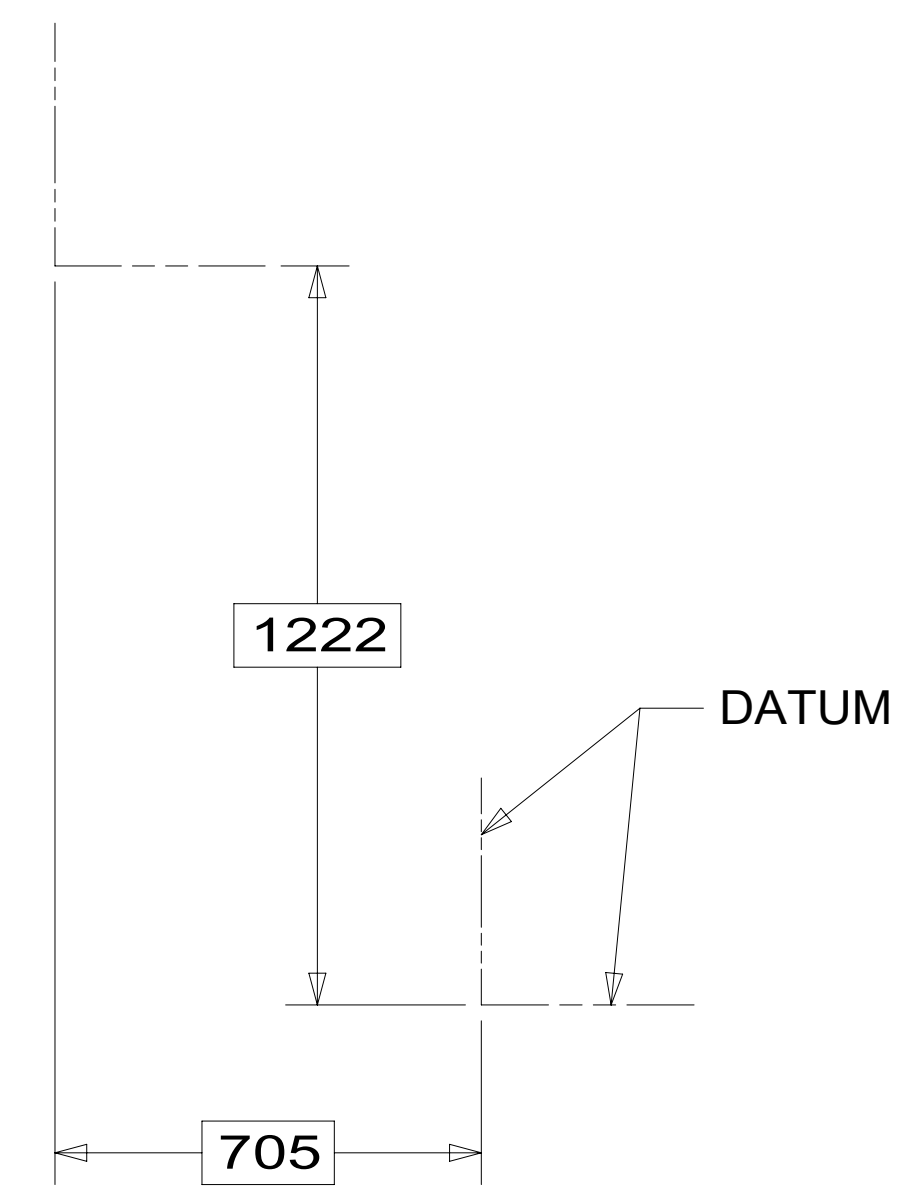
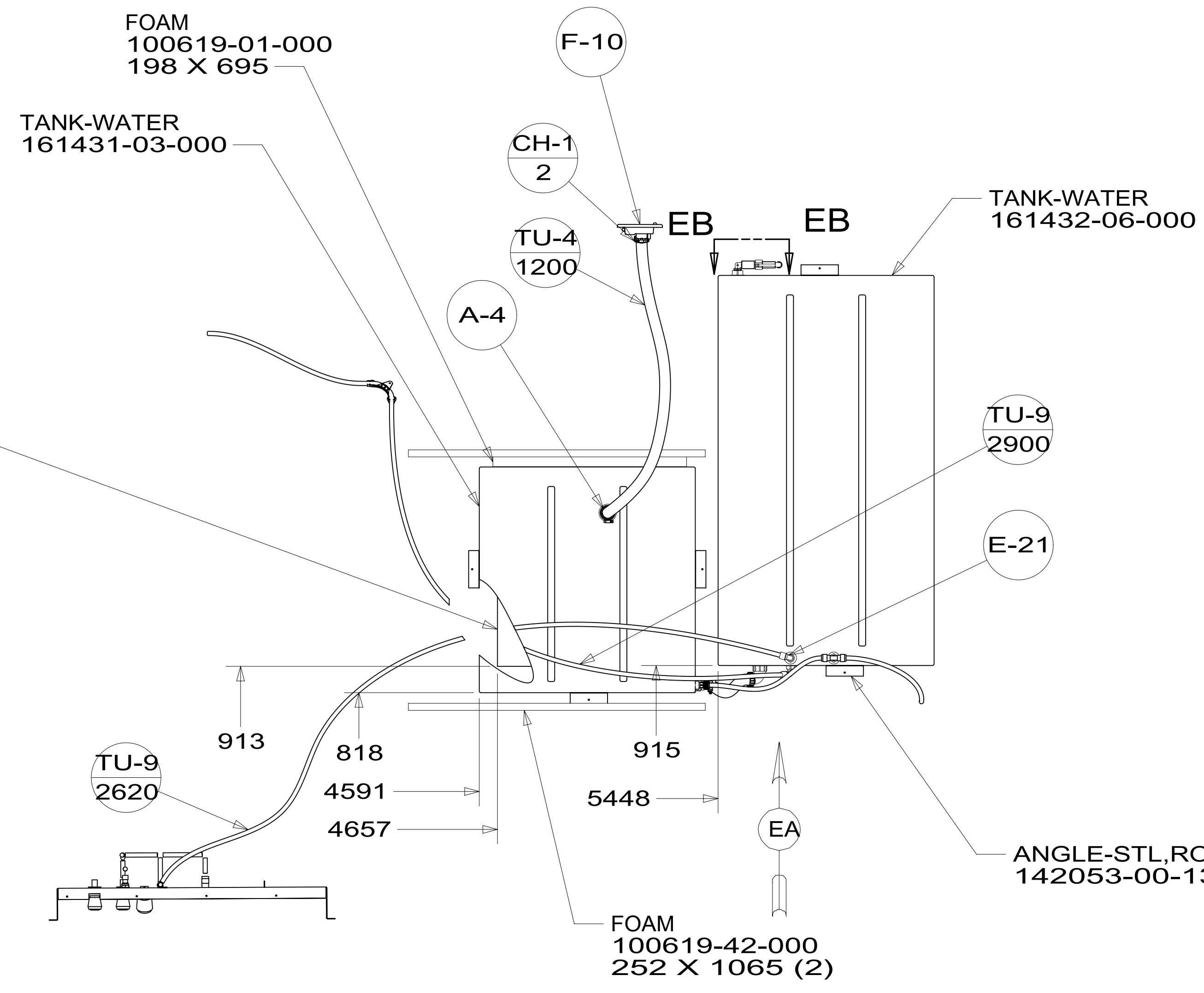
C

B

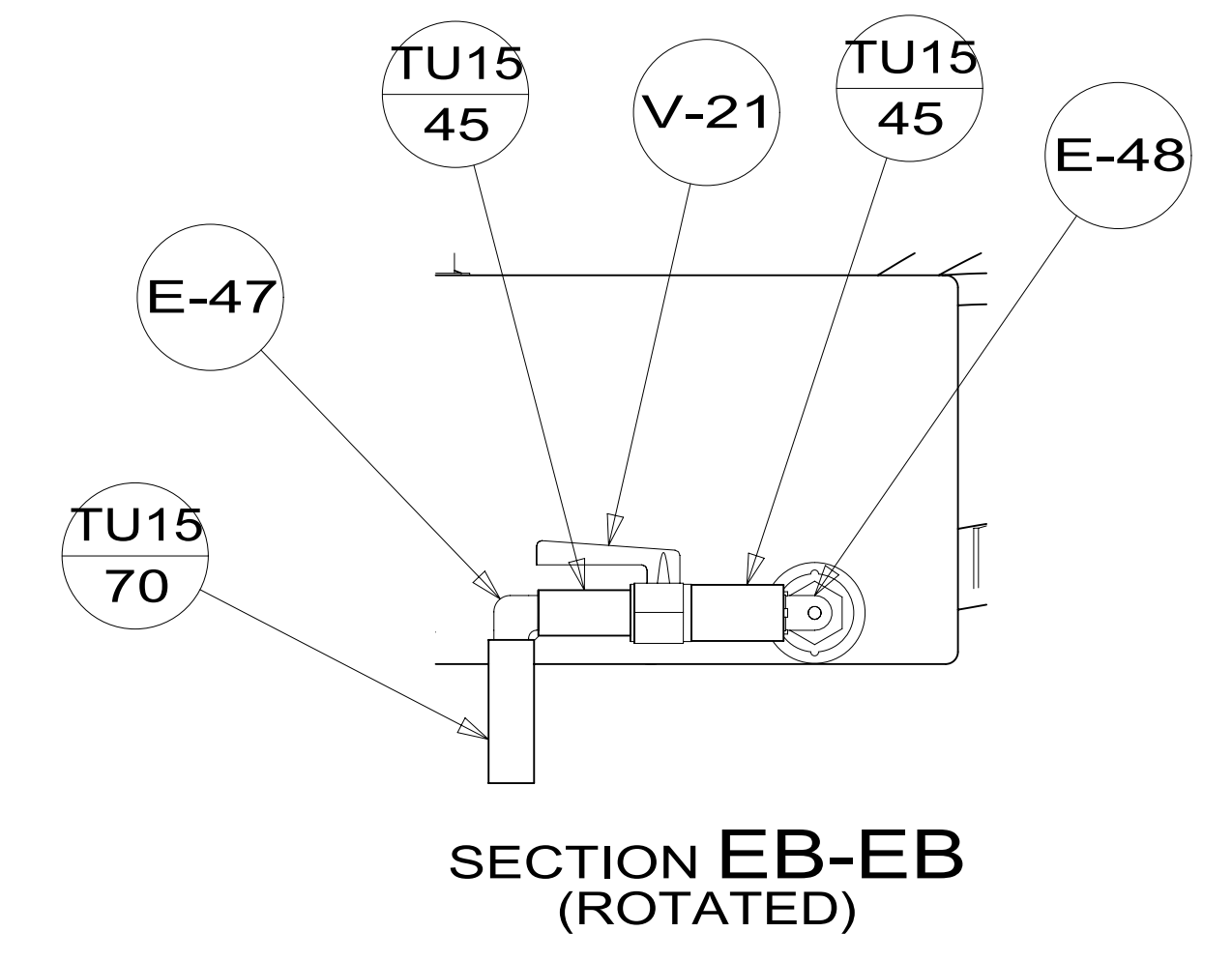
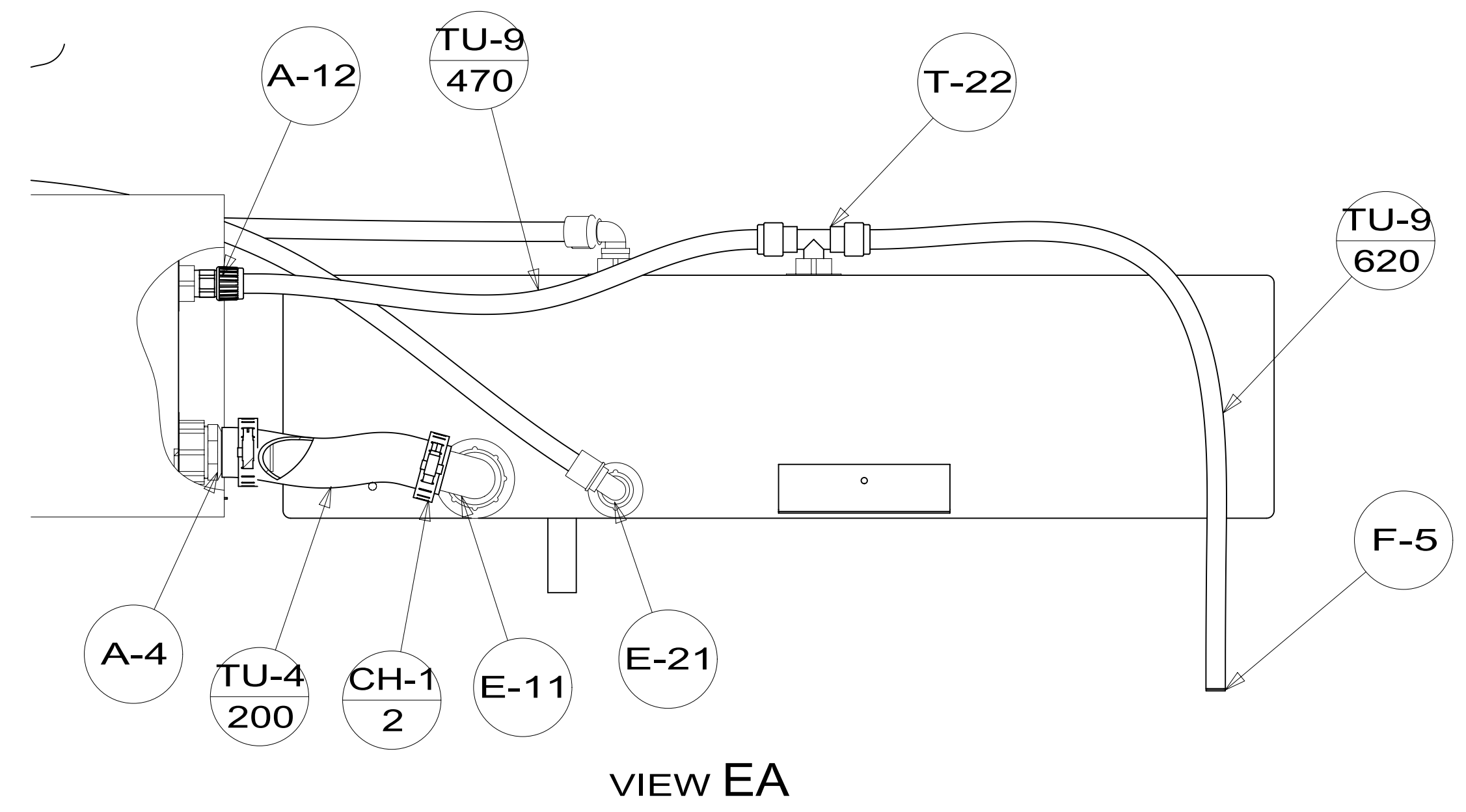
B

A

A



(ONLY SHOWING TANKS AND PIPING UNDER FLOOR)



FIRST USED	15 J32H		
TITLE:	DO NOT SCALE DRAWING		
TITLE:	WATER SYSTEM INSTL		
SHEET 5	PART NO	189439	REV
			1 11-Dec-2014

189439