

9. SEE DRAWING 061607 FOR INSTALLATION OF GROMMETS.
8. SECURE DRAINAGE PIPES TO CABINET USING WIRE TIE 108046-02-000, AND SCREW 000G67-10-12U AT INTERVALS OF NOT OF NOT MORE THAN 4 FEET APART.
7. SECURE VENT PIPE TO FLOOR WITH CLAMP 062401-02-000 (2), SCREW 000G67-10-12U (2), BRACKET 136878-01-CHT (2).
6. VENT PIPE MUST PROJECT 51 MIN AND 64 MAX ABOVE ROOF FOR PROPER FIT AND FUNCTION. ADD S-1 (116666-01-CHT SEAL-VENT PIPE) AROUND PIPE ON ROOF BEFORE VENT CAP IS INSTALLED.
5. SEAL AROUND SHOWER WITH SILICONE.
4. USE SMOOTH PLUMBERS PUTTY 167459-01-000 TO SEAL STRAINER (0.2 PER STRAINER).
3. ALL PIPE AND FITTINGS TO BE ASSEMBLED WITH SOLVENT 004020-01-000 (USA), 004020-02-000 (CAN)
2. SLOPE OF TRAP ARM MUST BE 6 PER 305 mm.
1. SLOPE OF HORIZONTAL PIPING TO BE MINIMUM OF 3 PER 305 mm.

NOTES:

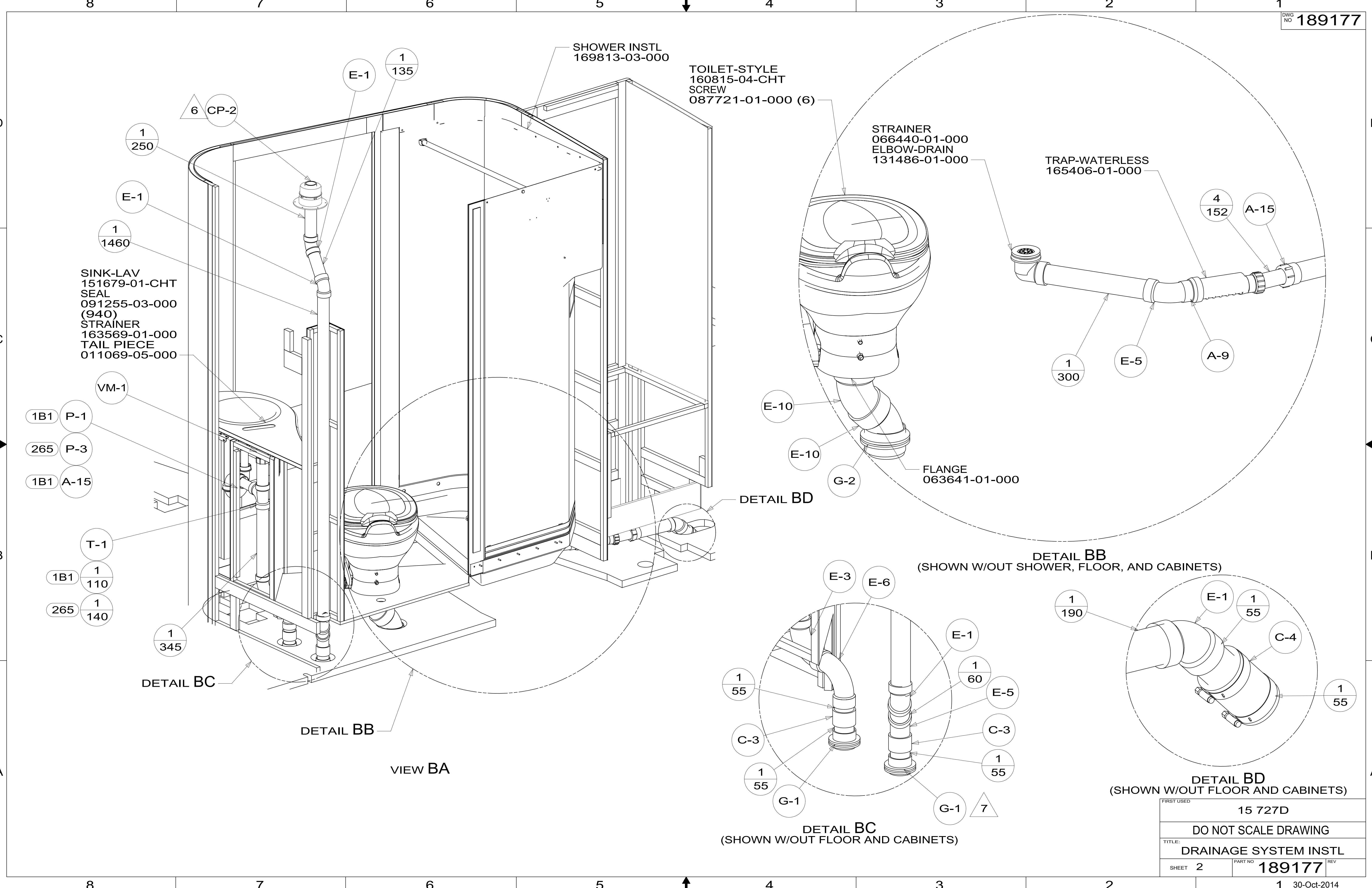
265 CODES/STANDARDS-CSA/CMVSS
 1B1 CODES/STANDARDS USA



| | |
|------------------------------|--|
| DFT-ORIG | ORIG. DATE |
| CHKR | ALL DIMENSIONS ARE IN MILLIMETERS |
| P.E. | |
| M.E. | FIRST USED |
| DSNR | 15 727D |
| UNSPECIFIED TOLERANCES ARE: | |
| WHOLE DIM (X) | : 3 |
| ONE-PLACE (X.X) | : 1.5 |
| TWO-PLACE (X.XX) | : 0.50 |
| ANGLE | : 1° |
| THIRD ANGLE PROJECTION | |
| DO NOT SCALE DRAWING | REFER TO ES0018 FOR FASTENER TIGHTENING GUIDELINES |
| TITLE: DRAINAGE SYSTEM INSTL | |
| SHEET 1 OF 4 | PART NO 189177 REV |
| REF: | 1 30-Oct-2014 |

FOR DRAINAGE CALLOUTS SEE DWG NO 116229-01-000

189177



D

D

C

C

B

B

A

A

→

←

↑

↓

DETAIL BC

DETAIL BB

VIEW BA

DETAIL BD

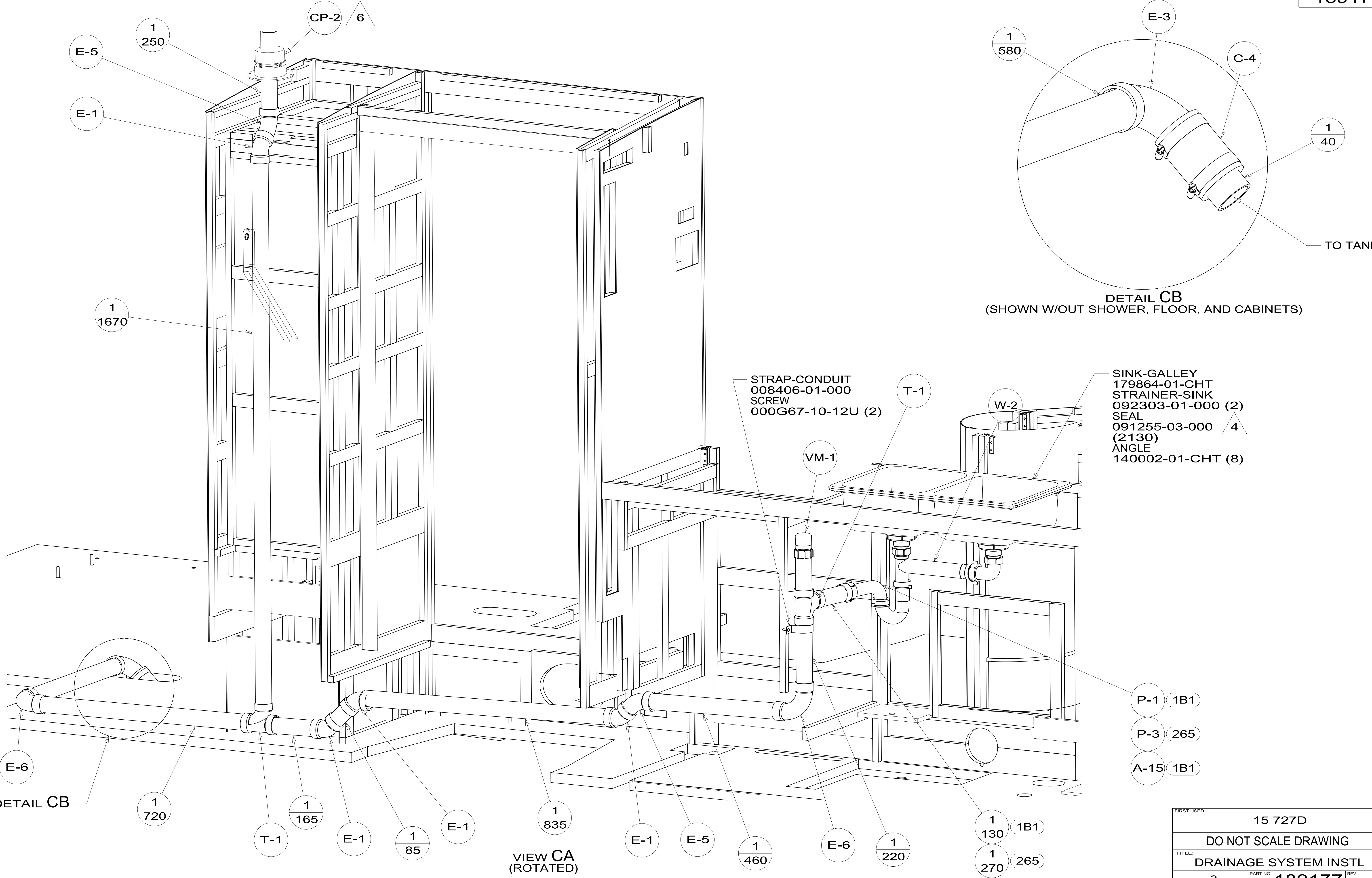
DETAIL BB
(SHOWN W/OUT SHOWER, FLOOR, AND CABINETS)

DETAIL BC
(SHOWN W/OUT FLOOR AND CABINETS)

DETAIL BD
(SHOWN W/OUT FLOOR AND CABINETS)

| | | |
|------------|-----------------------|---------------|
| FIRST USED | 15 727D | |
| TITLE: | DO NOT SCALE DRAWING | |
| TITLE: | DRAINAGE SYSTEM INSTL | |
| SHEET 2 | PART NO 189177 | REV |
| | | 1 30-Oct-2014 |

189177



DETAIL CB
(SHOWN W/OUT SHOWER, FLOOR, AND CABINETS)

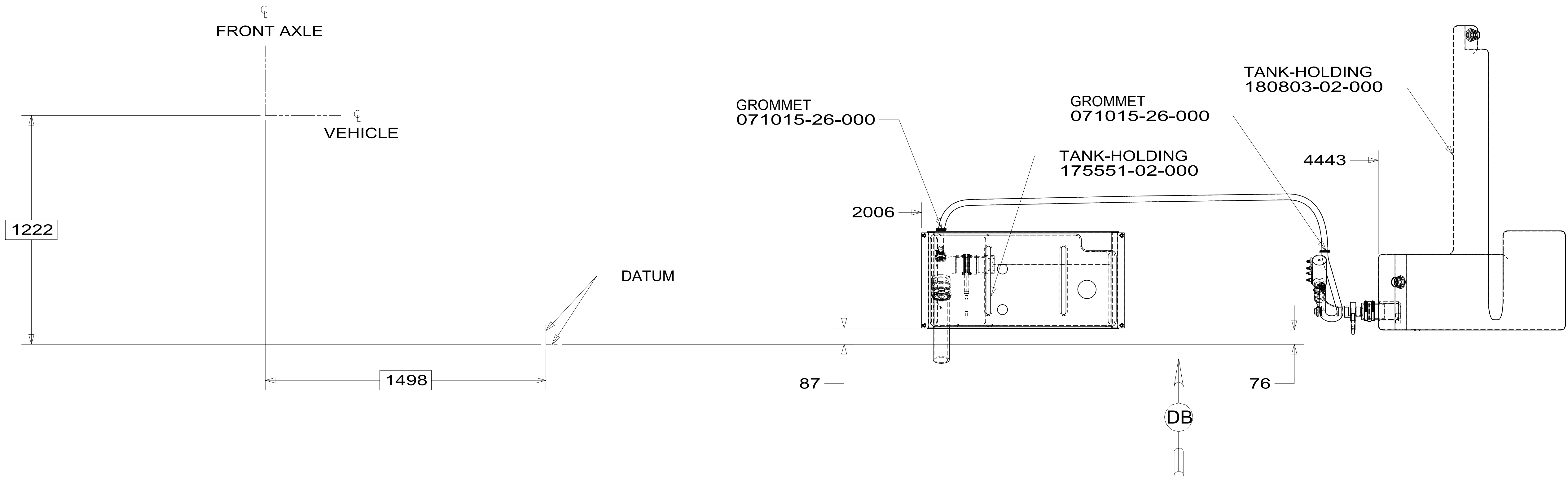
STRAP-CONDUIT
008406-01-000
SCREW
000G67-10-12U (2)

SINK-GALLEY
179864-01-CHT
STRAINER-SINK
092303-01-000 (2)
SEAL
091255-03-000 (2130)
ANGLE
140002-01-CHT (8)

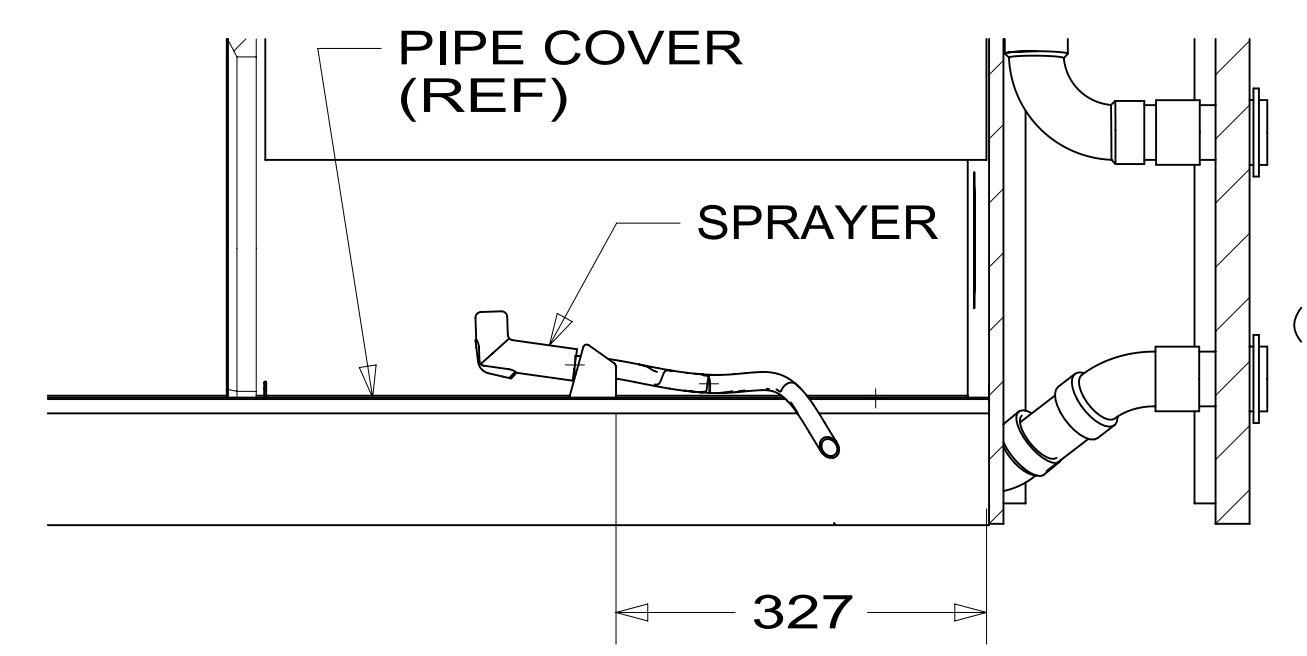
VIEW CA
(ROTATED)

| | |
|------------------------------|--------------------|
| FIRST USED | 15 727D |
| DO NOT SCALE DRAWING | |
| TITLE: DRAINAGE SYSTEM INSTL | |
| SHEET 3 | PART NO 189177 REV |
| 1 30-Oct-2014 | |

189177



TOP VIEW SHOWING TANKS AND DRAINS ONLY

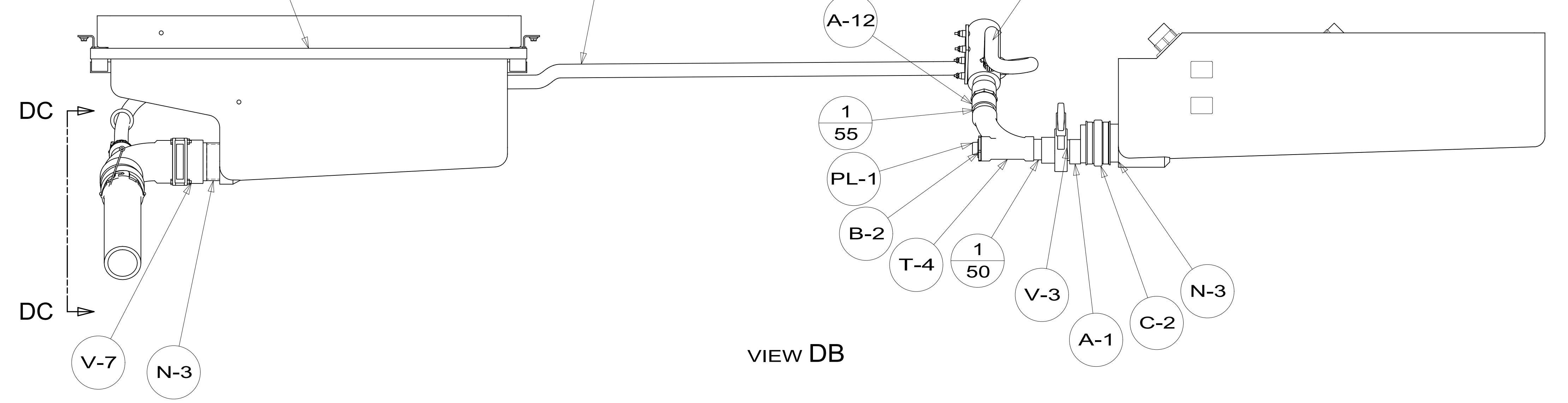


SECTION DA-DA

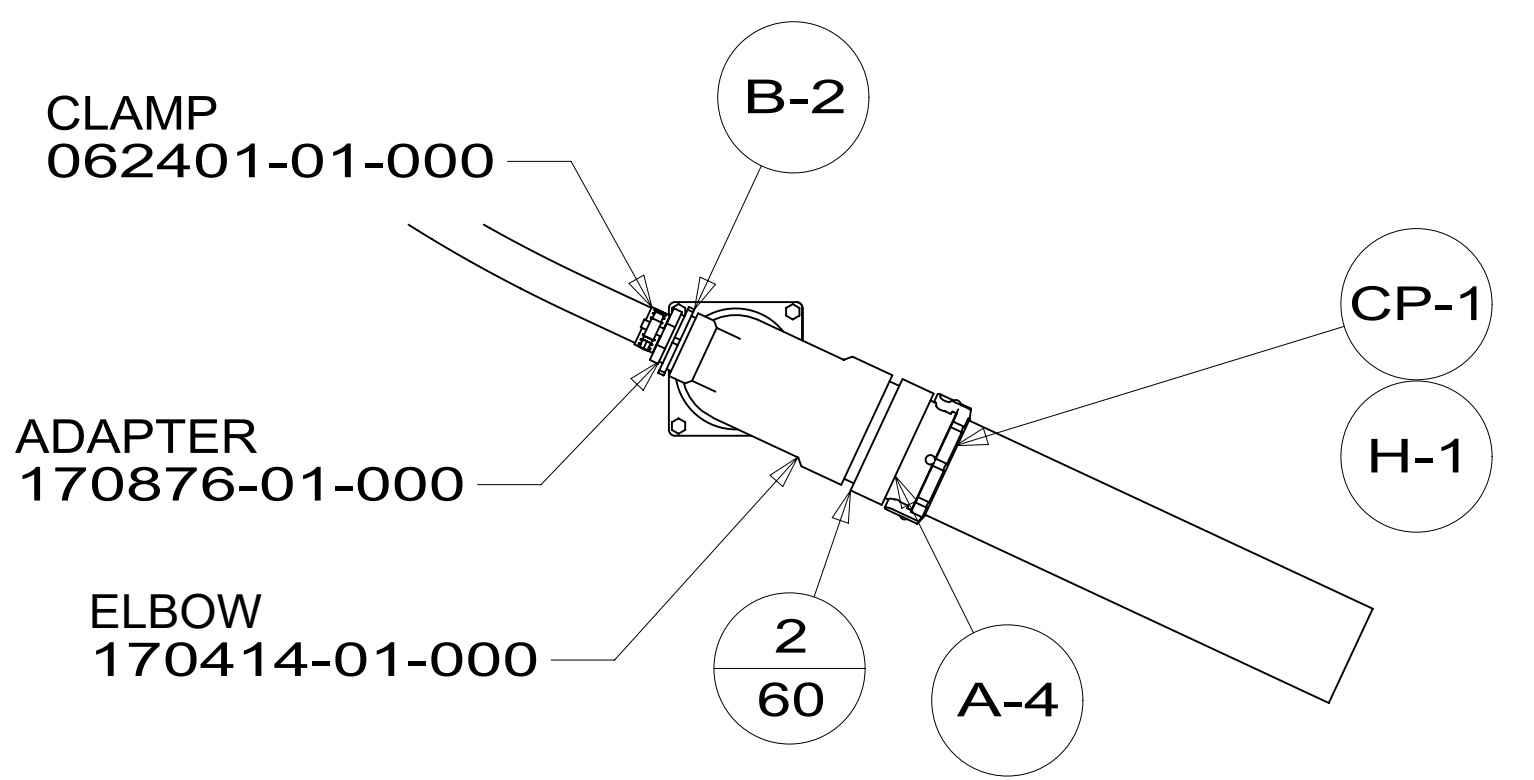
- CRADLE ASM 156612-08-CHT
- WASHER 000E13-16-00U (4)
- NUT 000D39-05-00U (4)

- HOSE 177021-01-000 (3500)
- (WIRE TIE MACERATOR PUMP HOSE UP TO THE CHASSIS FRAME ASM)

- PUMP-MACERATOR 165762-02-000
- CLAMP 062401-01-000
- SCREW 000G19-10-20U (4)
- WASHER 000E13-11-00U (8)
- NUT 000D24-10-00U (4)



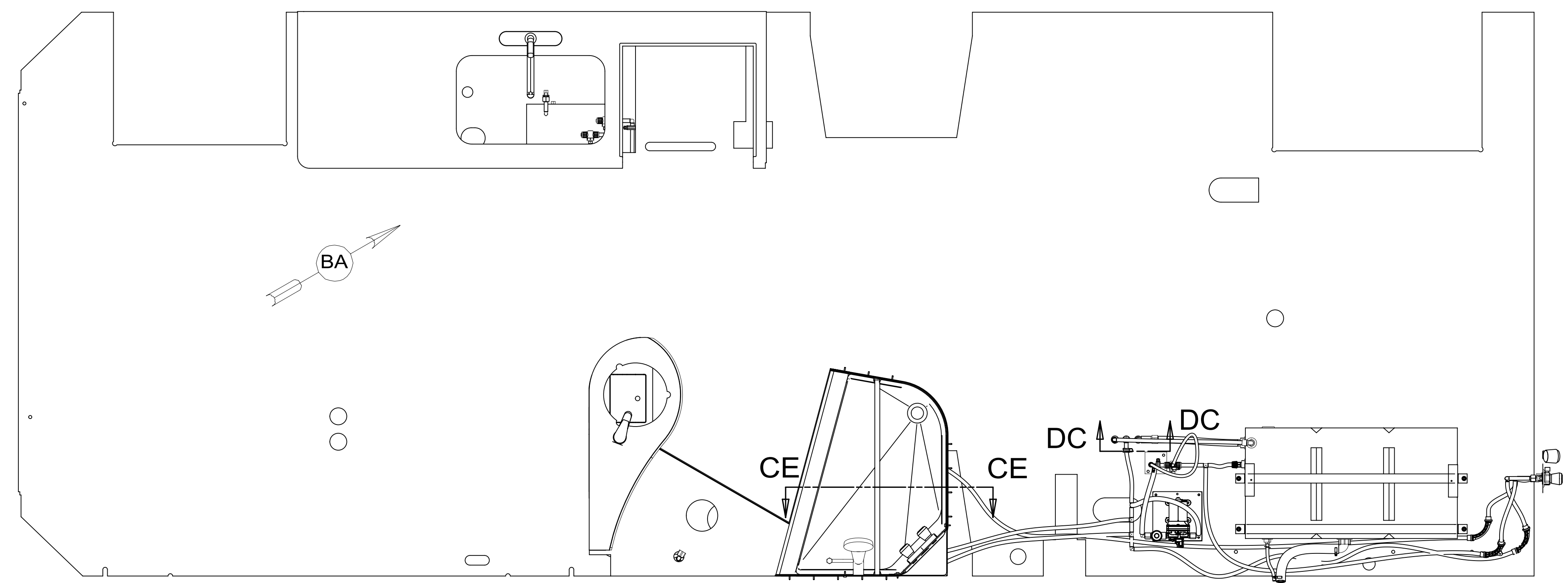
VIEW DB



SECTION DC-DC

| | | |
|------------|-----------------------|---------------|
| FIRST USED | 15 727D | |
| TITLE: | DO NOT SCALE DRAWING | |
| TITLE: | DRAINAGE SYSTEM INSTL | |
| SHEET 4 | PART NO 189177 | REV |
| | | 1 30-Oct-2014 |

189177



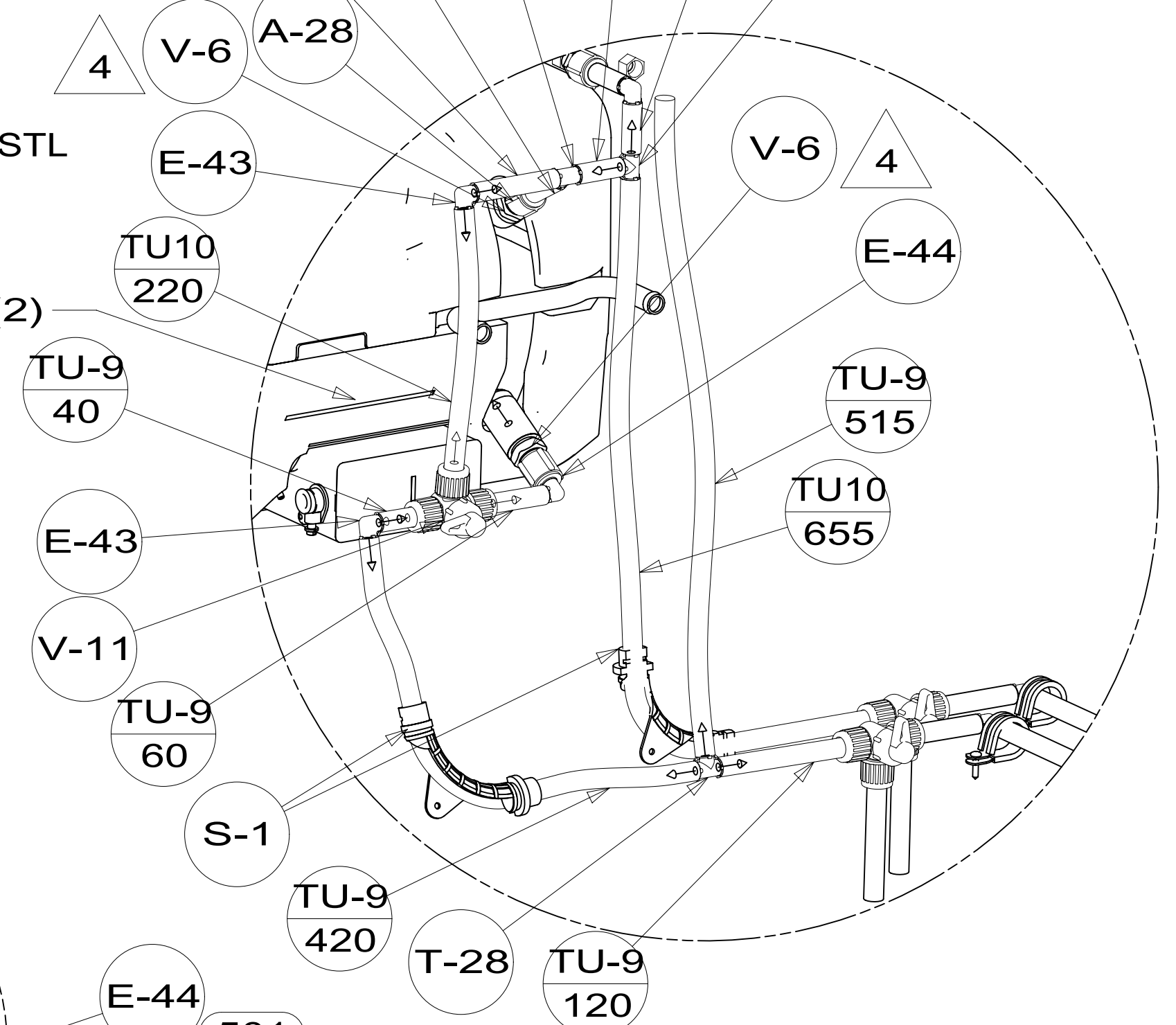
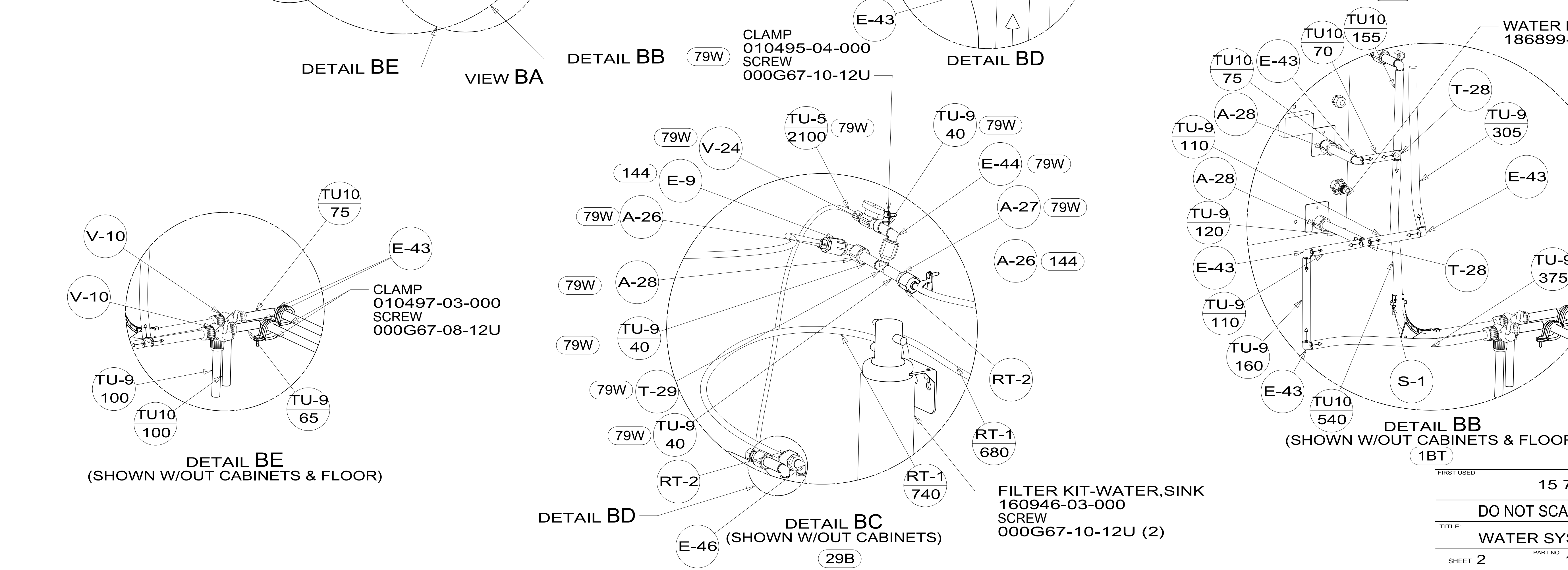
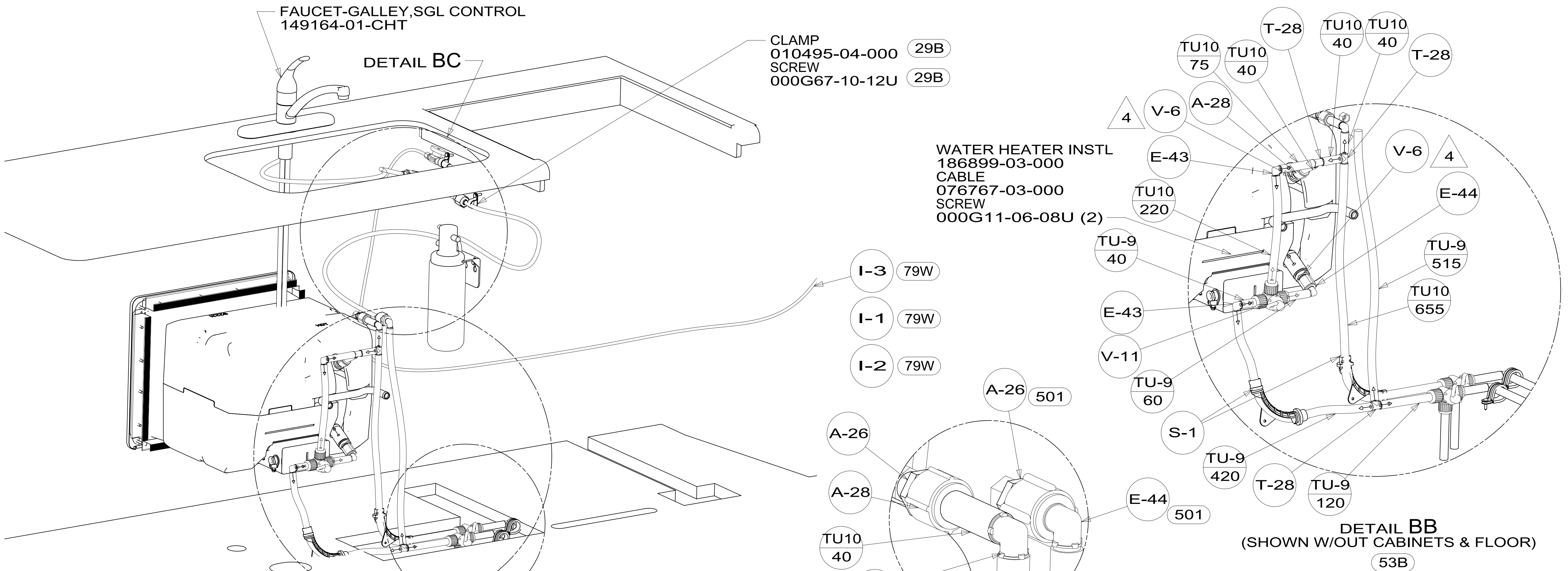
- (144) REFRIGERATOR-DOUBLE DOOR
- (1BT) WATER HEATER-TANKLESS
- (53B) WTR HTR-6 GAL ELECTRIC/LP GAS
- (29B) WATER PURIFIER
- (501) WATER PURIFIER-WITHOUT
- (53E) WATER SYS WINTERIZATION PKG
- (64R) EXTERIOR WASH STATION

- NOTES:
9. ALL CRIMP FITTINGS TO 3/4" PEX TUBING REQUIRE 3/4" CLAMP 140171-05-000.
 8. ALL CRIMP FITTINGS TO 1/2" PEX TUBING REQUIRE 1/2" CLAMP 140171-03-000.
 7. ALL CRIMP FITTINGS TO 5/8" FLEX TUBING REQUIRE 5/8" CLAMP 140171-04-000.
 6. LABEL HOT AND COLD SUPPLY TUBES AND TAPE FITTING TO TUBE BEFORE CABINET SET TO PREVENT MOVEMENT.
 5. ADD PIPE WRAP (LADDER SCRAP 110157-02-000) INSULATION.
 4. ADD TEFLON TAPE 010405-02-000.
 3. ALL TUBING TO BE SECURED AT 1200 INTERVALS MAXIMUM WITH CLAMP 010495-01-000 AND SCREW 000G67-10-12U OR EQUIVALENT.
 2. TUBING TO BE INSTALLED WITH SUFFICIENT SLOPE TO PROVIDE DRAINAGE TO NEAREST VALVE.
 1. PLASTIC FITTINGS TO BE SEALED WITH SEALANT 084456-01-000.

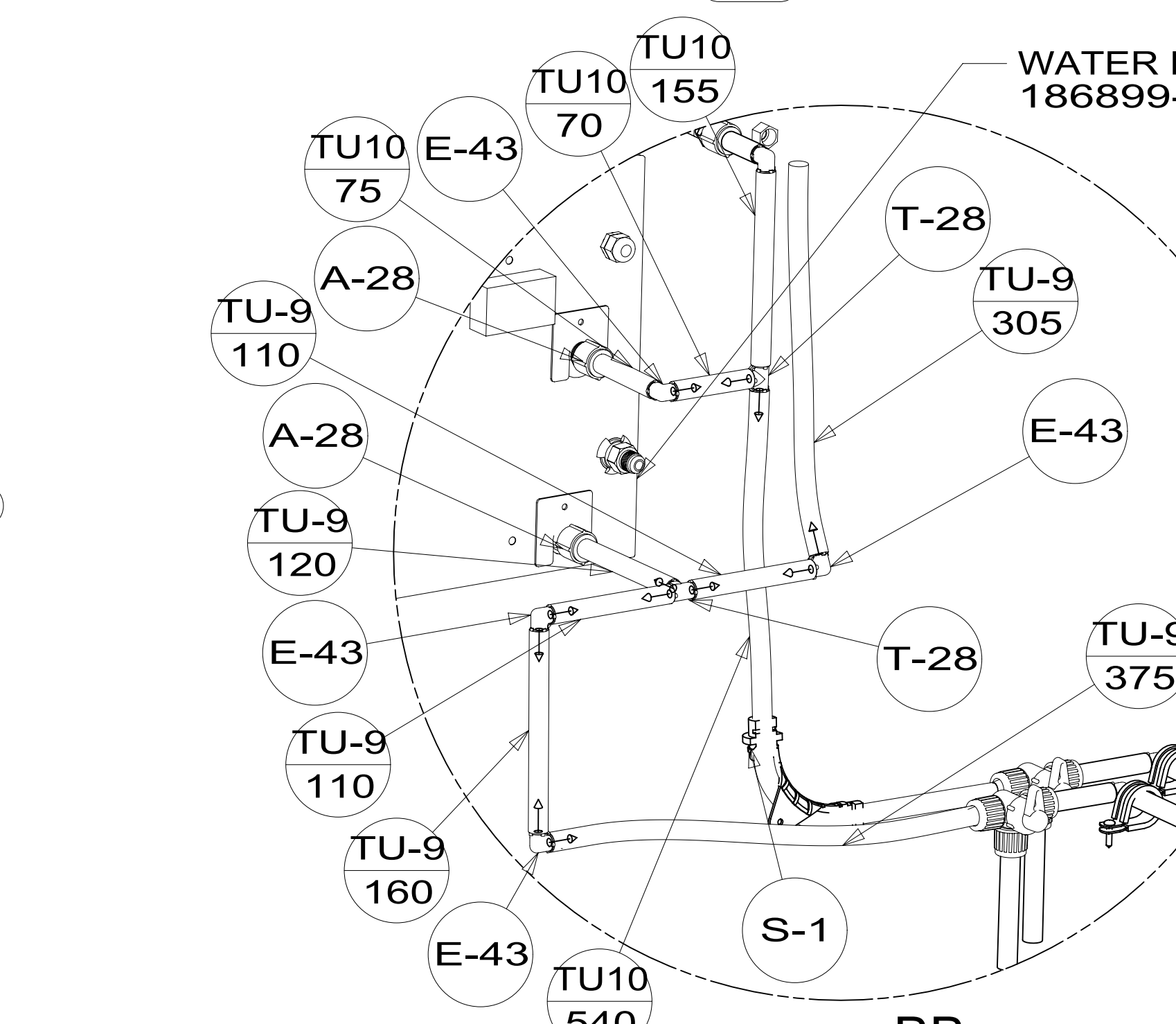
(X-X)
FOR WATER CALLOUTS SEE DWG NO 116230-01-000

| | | | |
|-----------------------------|-----------------------------------|--|-------------|
| WINNEBAGO | | COPYRIGHT 2014 WINNEBAGO INDUSTRIES, INC. | |
| DFTR | ORIG. DATE | | |
| CHKR | ALL DIMENSIONS ARE IN MILLIMETERS | | |
| P.E. | MATERIAL: | | |
| M.E. | FIRST USED | | |
| DSNR | 15 727D | | |
| UNSPECIFIED TOLERANCES ARE: | | MATERIAL: | |
| WHOLE DIM (X) | : 3 | | |
| ONE-PLACE (X.X) | : | | |
| TWO-PLACE (X.XX) | : | | |
| ANGLE | : | | |
| THIRD ANGLE PROJECTION | | | |
| DO NOT SCALE DRAWING | | REFER TO ES0018 FOR FASTENER TIGHTENING GUIDELINES | |
| TITLE: WATER SYSTEM INSTL | | | |
| SHEET 1 OF 4 | PART NO | 189135 | REV |
| REF: | | 1 | 05-Aug-2015 |

*189135*A



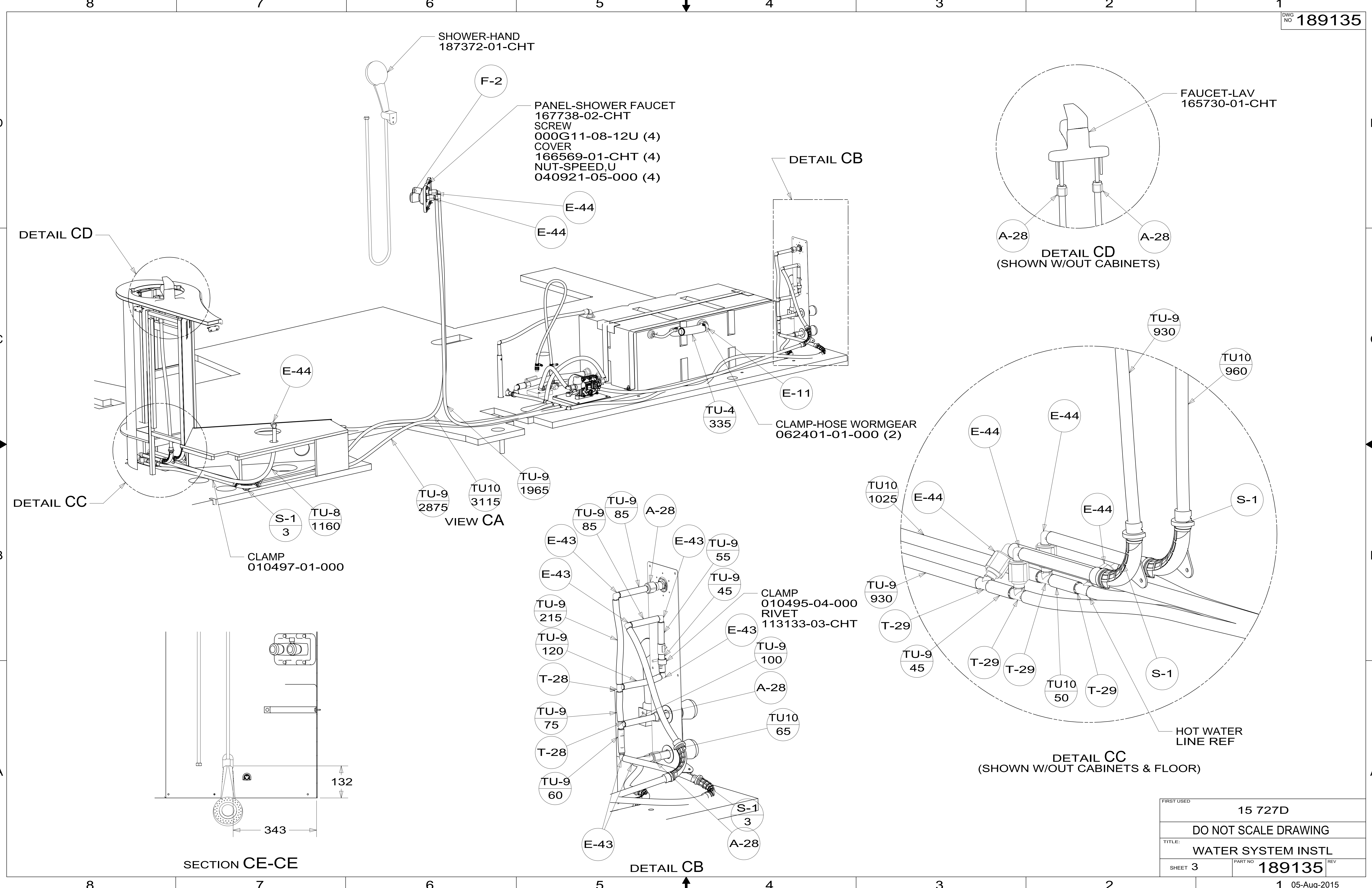
DETAIL BB
(SHOWN W/OUT CABINETS & FLOOR)
53B



DETAIL BB
(SHOWN W/OUT CABINETS & FLOOR)
1BT

| | |
|---------------------------|--------------------|
| FIRST USED | 15 727D |
| DO NOT SCALE DRAWING | |
| TITLE: WATER SYSTEM INSTL | |
| SHEET 2 | PART NO 189135 REV |
| 1 05-Aug-2015 | |

189135



| | |
|------------|----------------------|
| FIRST USED | 15 727D |
| TITLE: | DO NOT SCALE DRAWING |
| | WATER SYSTEM INSTL |
| SHEET 3 | PART NO 189135 REV |

189135

STRAP
118994-08-CHT (2)
NUT
000D39-05-00U (4)

TANK ASM-WATER,27 GAL
045195-14-000

ANGLE-STL,ROOF JOINT
142053-00-134

ANGLE-STL,ROOF JOINT
142053-00-130

F-14

PANEL-WATER,BACKWALL
177643-03-CHT

DETAIL DD

SH-1

V-22

F-2

DE

TU-9
1950

TU-9
2000

TU10
4870

TU-9
540

TU-9
100

TU-3
1000

T-28

TU15
330

E-21

TU-8
475

A-29

TU-9
110

A-12

TANK FILL
LINE REF

A-5

CH-2
2

TU-3
170

F-10

PANEL-WATER PUMP
149477-02-CHT
FOAM PAD
140364-01-CHT
SCREW
000G39-08-24U (4)

TANK FILL
LINE REF

HOT WATER
LINE REF

COLD WATER
LINE REF

VIEW DA

VIEW DB

HOT WATER
LINE REF

PW-5 SCREW
000G39-08-16U (4)

TU-9
90

E-43

E-47

SCREW
000G60-08-12U

76

TU15
40

V-21

TU15
500

TU15
135

SECTION DC-DC

CLAMP
010497-01-000 (2)
SCREW
000G67-08-12U (2)

V-23

TU-9
45

CH-3
2

A-13

A-28

TU-9
40

V-11

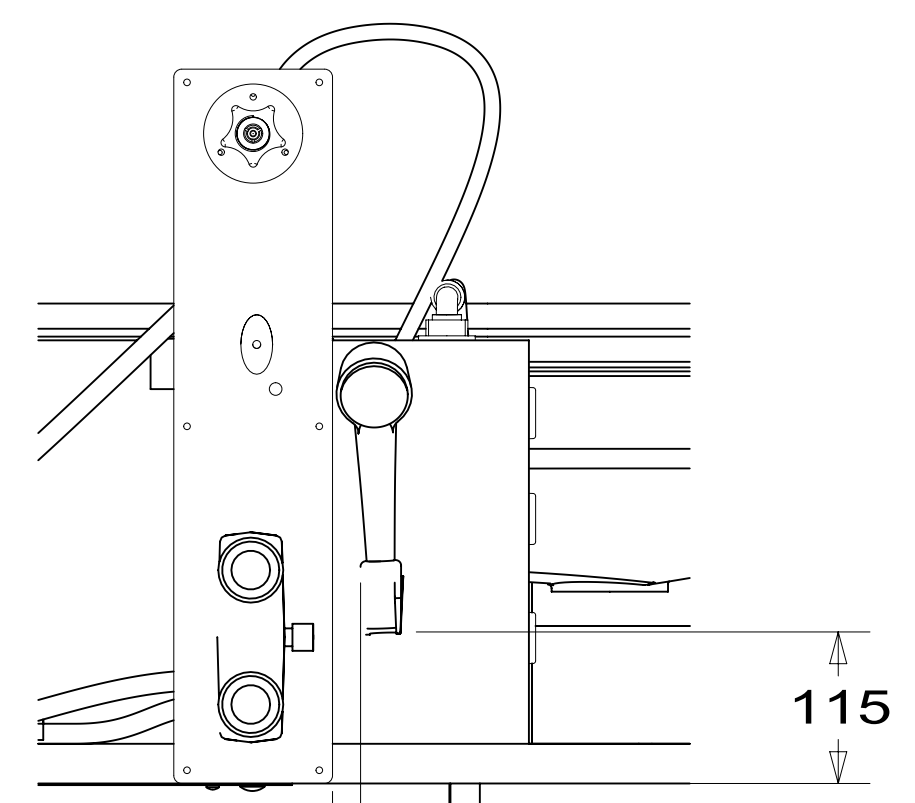
PLYWOOD
000860-51-330
SCREW
000G67-10-24U (2)

CI-3

E-43

TU-9
40

DETAIL DD



VIEW DE

| | |
|------------------------------|--------------------|
| FIRST USED | 15 727D |
| DO NOT SCALE DRAWING | |
| TITLE: WATER SYSTEM INSTL | |
| SHEET 4 | PART NO 189135 REV |