

- NOTES:**
1. SLOPE OF HORIZONTAL PIPING TO BE MINIMUM OF 3 PER 305 mm.
  2. SLOPE OF TRAP ARM MUST BE 6 PER 305 mm.
  3. ALL PIPE AND FITTINGS TO BE ASSEMBLED WITH SOLVENT 004020-01-000 (USA), 004020-02-000 (CAN)
  4. USE SMOOTH PLUMBERS PUTTY 167459-01-000 TO SEAL STRAINER (0.2 PER STRAINER).
  5. SEAL AROUND SHOWER WITH SILICONE.
  6. VENT PIPE MUST PROJECT 51 MIN AND 64 MAX ABOVE ROOF FOR PROPER FIT AND FUNCTION. ADD S-1 (116666-01-CHT SEAL-VENT PIPE) AROUND PIPE ON ROOF BEFORE VENT CAP IS INSTALLED.
  7. SECURE VENT PIPE TO TANK WITH CLAMP 062401-02-000.
  8. SECURE DRAINAGE PIPES TO CABINET USING WIRE TIE 108046-02-000, AND SCREW 000G67-10-12U AT INTERVALS OF NOT OF NOT MORE THAN 4 FEET APART.
  9. SEE DRAWING 061607 FOR INSTALLATION OF GROMMETS.
  10. USE TEFLON TAPE 010405-01-000 FOR PUMP TO A-12 CONNECTION.

- 265 CODES/STDS-CSA/CMVSS
- 1B1 CODES/STANDARDS-USA

**WINNEBAGO** INDUSTRIES, INC. COPYRIGHT 2014

DFTR	ORIG. DATE
CHKR	ALL DIMENSIONS ARE IN MILLIMETERS
P.E.	
M.E.	FIRST USED
DSNR	15 E35F

UNSPECIFIED TOLERANCES ARE:

WHOLE DIM (X)	: 3
ONE-PLACE (X.X)	:
TWO-PLACE (X.XX)	:
ANGLE	:

THIRD ANGLE PROJECTION

DO NOT SCALE DRAWING REFER TO ES0018 FOR FASTENER TIGHTENING GUIDELINES

TITLE: **DRAINAGE SYSTEM INSTL**

SHEET 1 OF 4 PART NO **188499** REV

REF: 1 17-Jul-2015

FOR DRAINAGE CALLOUTS SEE DWG NO 116229-01-000

\*188499\*

8

7

6

5

4

3

2

1

8

7

6

5

4

3

2

1

D

D

C

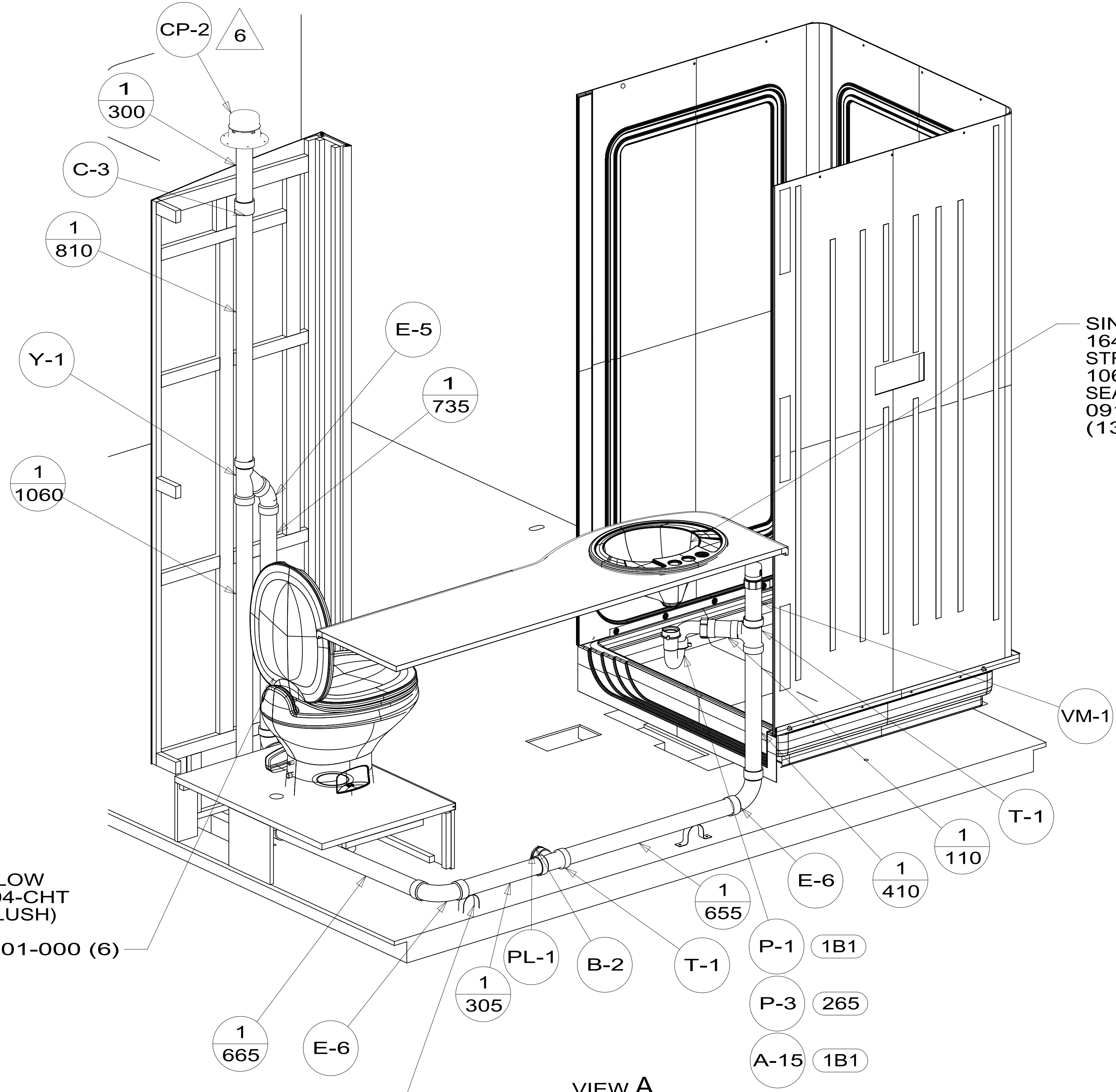
C

B

B

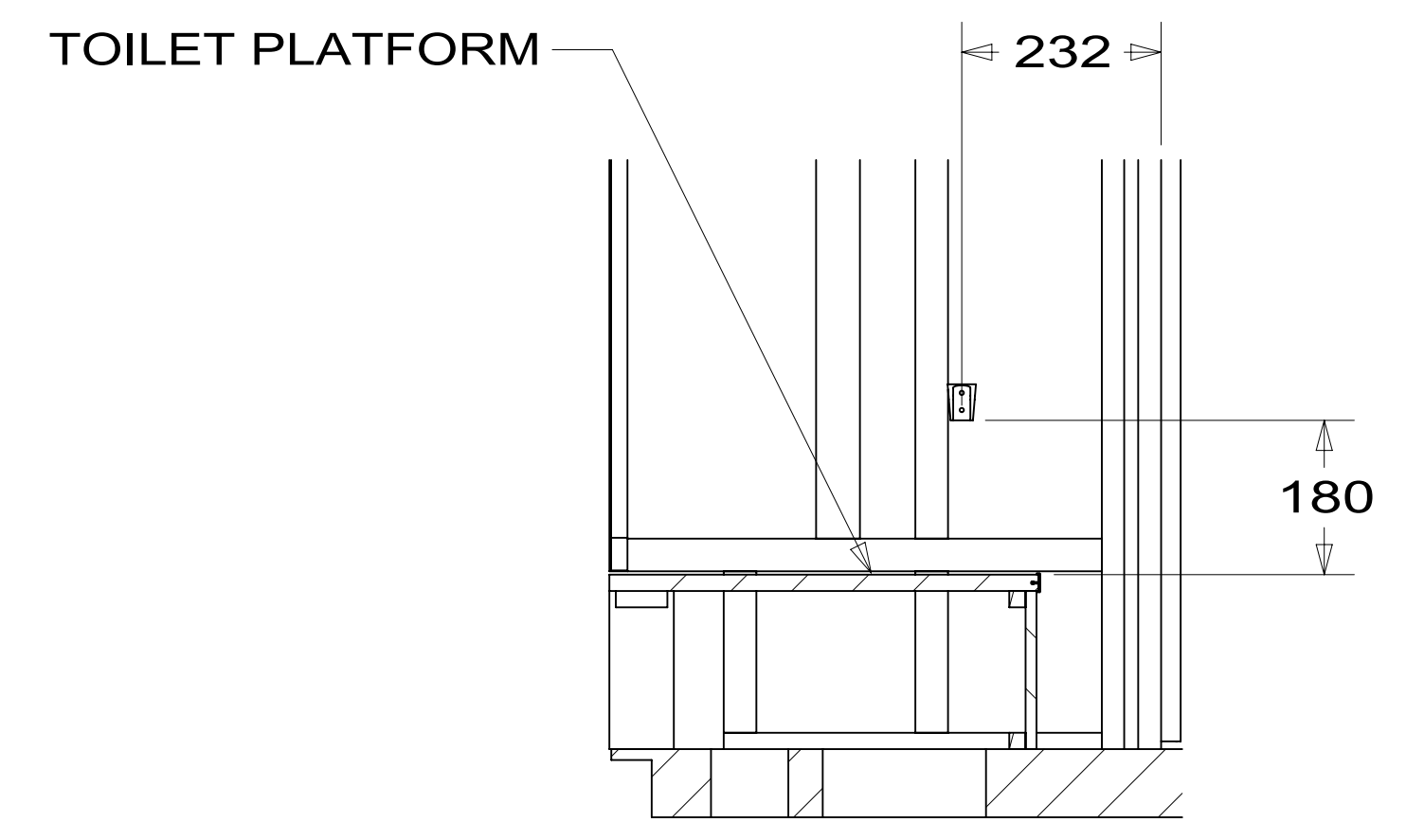
A

A

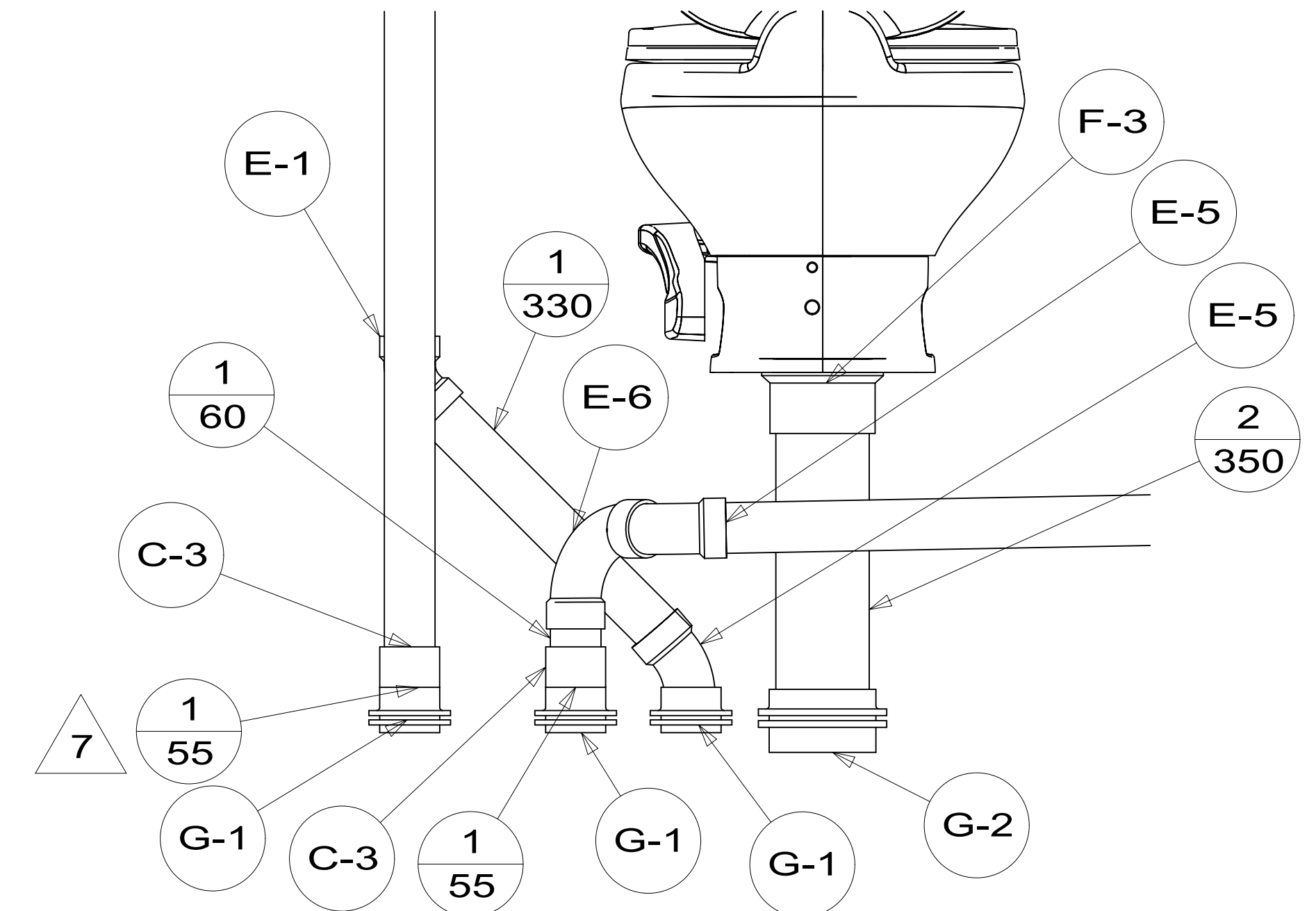


VIEW A

SINK-LAV  
164615-01-CHT  
STRAINER  
106116-01-CHT  
SEAL  
091255-03-000  
(1300)



SECTION BA-BA



VIEW D  
(SHOWN W/OUT CABINETS AND FLOOR)

STRAP-CONDUIT, 2"  
008406-01-000(2)

FIRST USED	15 E35F	
DO NOT SCALE DRAWING		
TITLE: DRAINAGE SYSTEM INSTL		
SHEET 2	PART NO 188499	REV
17-Jul-2015		

\*188499\*

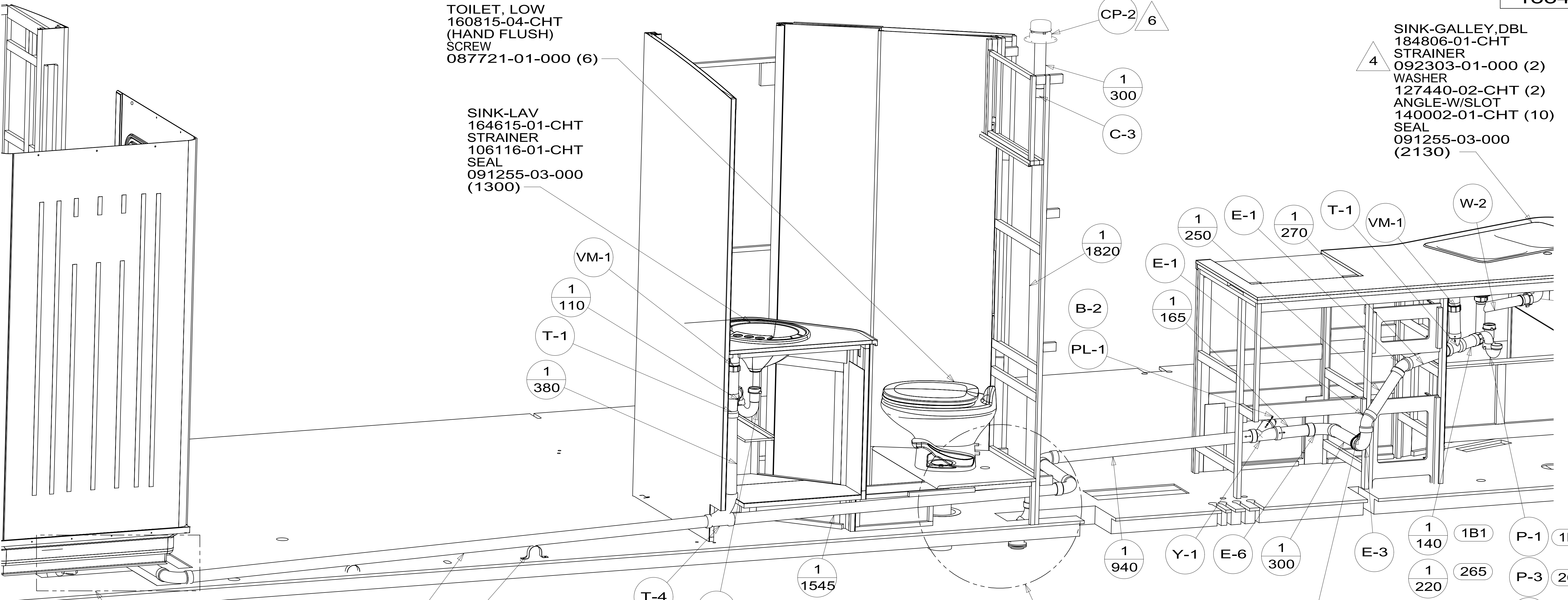
TOILET, LOW  
160815-04-CHT  
(HAND FLUSH)  
SCREW  
087721-01-000 (6)

SINK-LAV  
164615-01-CHT  
STRAINER  
106116-01-CHT  
SEAL  
091255-03-000  
(1300)

SINK-GALLEY, DBL  
184806-01-CHT  
STRAINER  
092303-01-000 (2)  
WASHER  
127440-02-CHT (2)  
ANGLE-W/SLOT  
140002-01-CHT (10)  
SEAL  
091255-03-000  
(2130)

SHOWER INSTL-ENCLOSURE  
174527-01-000  
STRAINER  
066440-01-000  
TAILPIECE  
011069-06-000  
RUBBER WASHER  
127440-02-CHT  
NUT  
130403-01-000

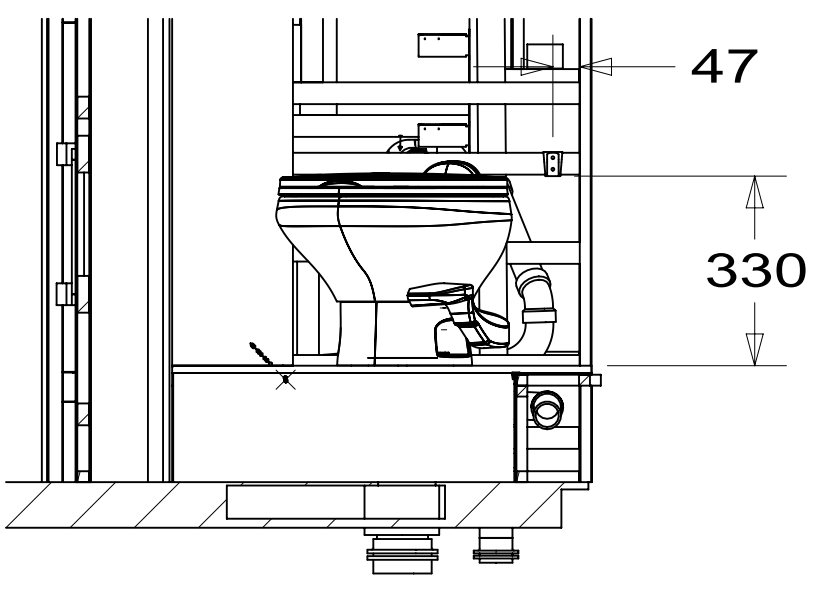
CLAMP-WIRE  
083610-02-000  
SCREW  
000G67-10-12U



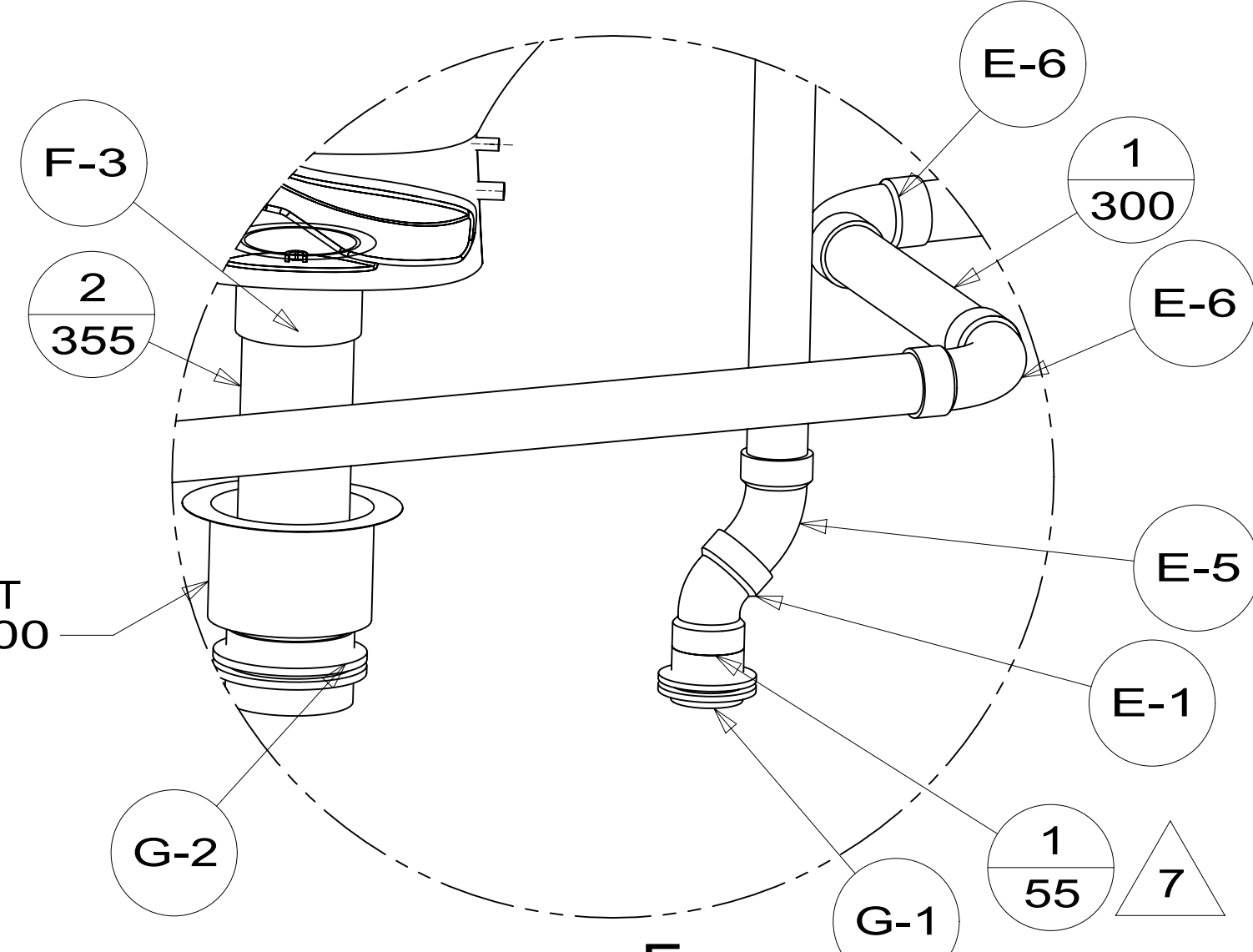
DETAIL C

VIEW B

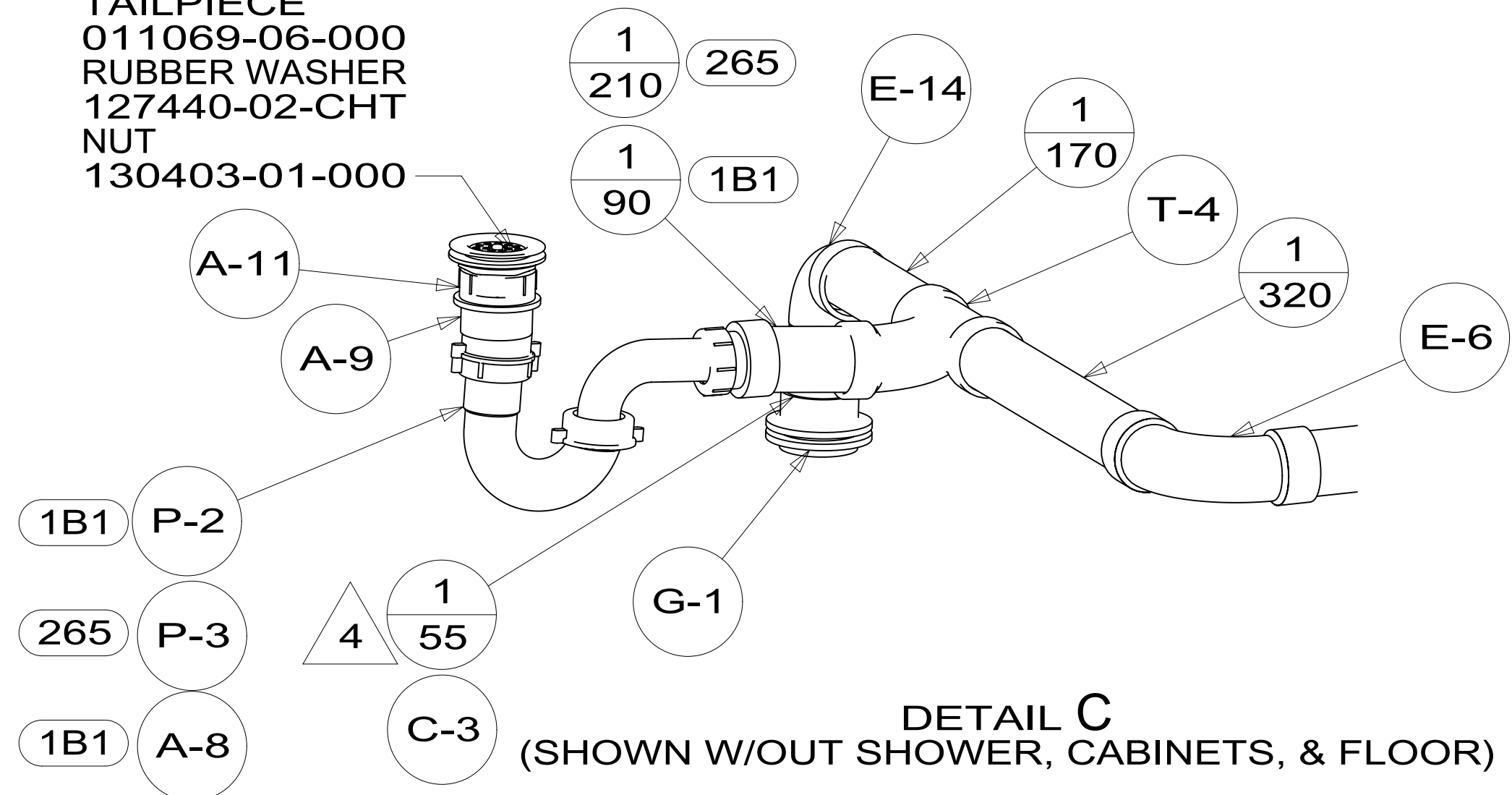
DETAIL E



SECTION CA-CA



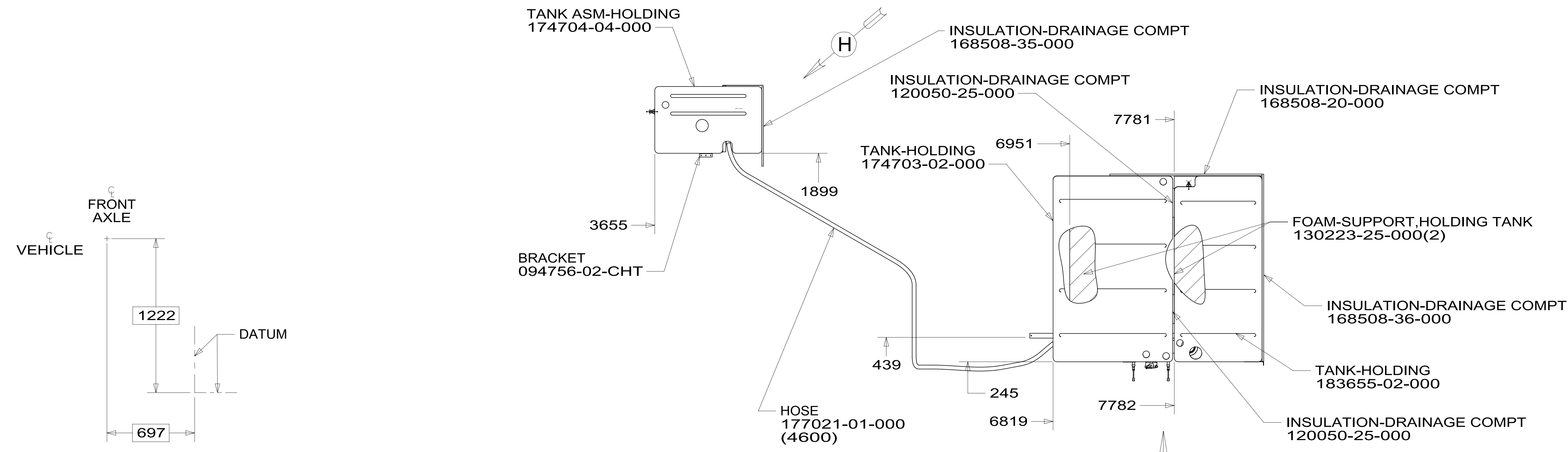
DETAIL E  
(SHOWN W/OUT CABINETS & FLOOR)



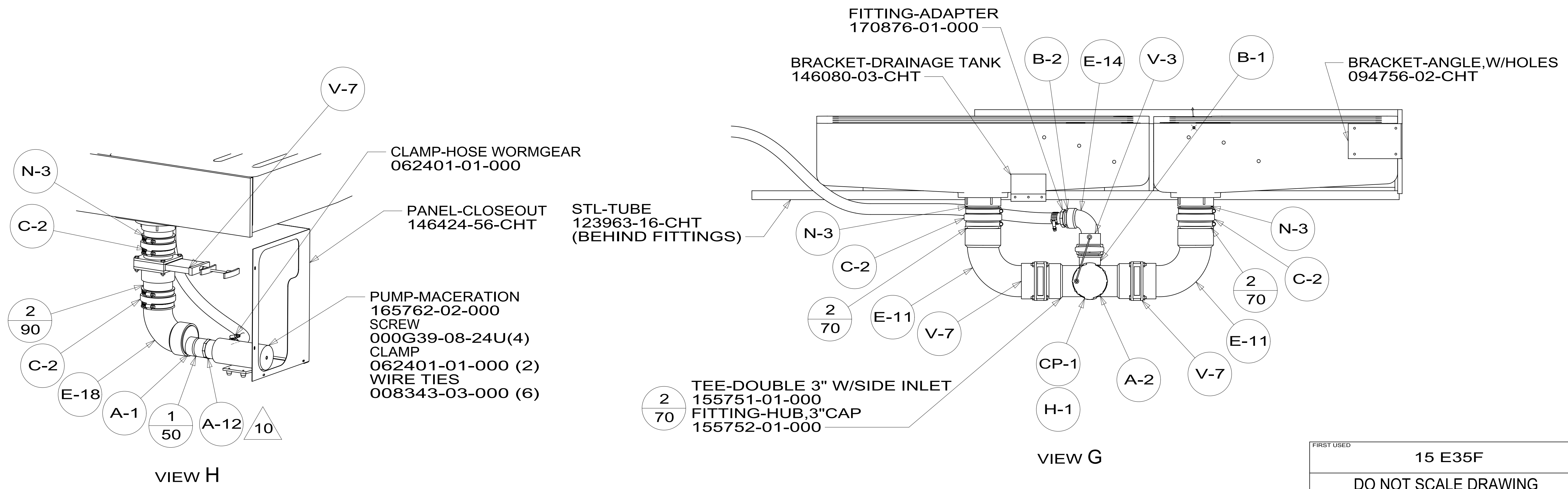
DETAIL C  
(SHOWN W/OUT SHOWER, CABINETS, & FLOOR)

FIRST USED	15 E35F
DO NOT SCALE DRAWING	
TITLE: DRAINAGE SYSTEM INSTL	
SHEET 3	PART NO 188499 REV
1 17-Jul-2015	

\*188499\*

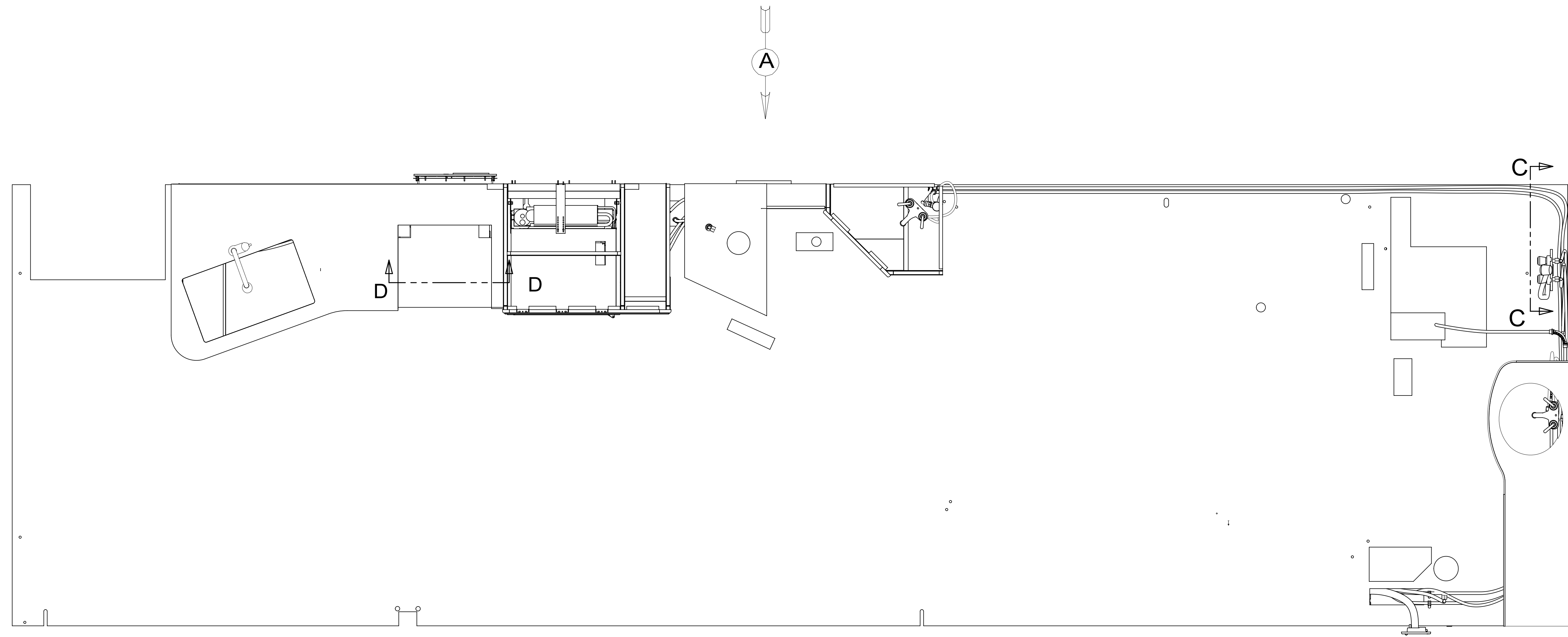


TOP VIEW SHOWING TANKS AND DRAINS



FIRST USED	15 E35F	
TITLE:	DO NOT SCALE DRAWING	
TITLE:	DRAINAGE SYSTEM INSTL	
SHEET 4	PART NO 188499	REV
	1	17-Jul-2015

\* 188499 \*



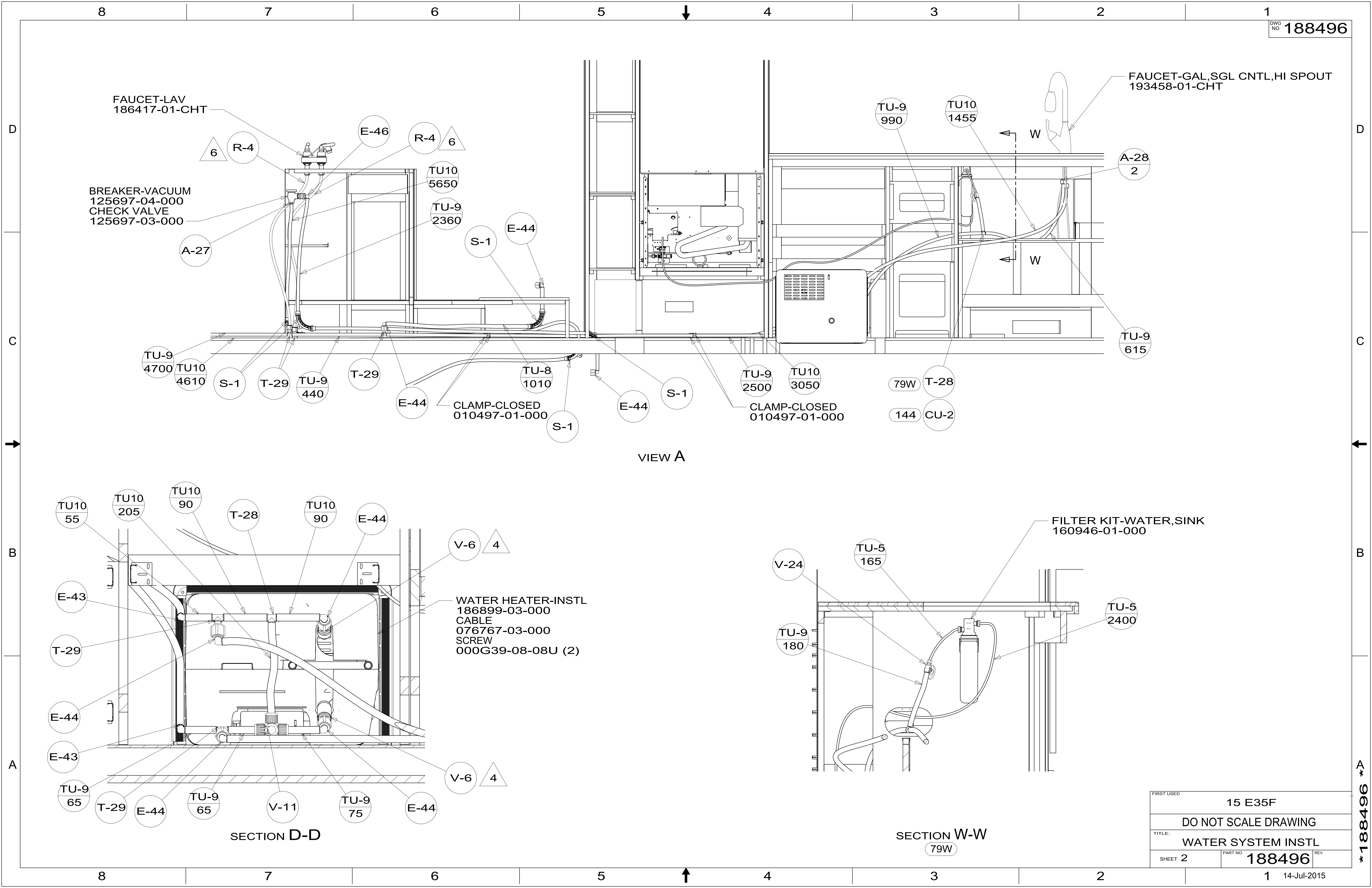
- 9. ALL CRIMP FITTINGS TO 3/4" PEX TUBING REQUIRE 3/4" CLAMP 140171-05-000.
- 8. ALL CRIMP FITTINGS TO 1/2" PEX TUBING REQUIRE 1/2" CLAMP 140171-03-000.
- 7. ALL CRIMP FITTINGS TO 5/8" FLEX TUBING REQUIRE 5/8" CLAMP 140171-04-000.
- 6 LABEL HOT AND COLD SUPPLY TUBES AND TAPE FITTING TO TUBE BEFORE CABINET SET TO PREVENT MOVEMENT.
- 5 ADD PIPE WRAP (LADDER SCRAP 110157-02-000) INSULATION.
- 4 ADD TEFLON TAPE 010405-02-000.
- 3. ALL TUBING TO BE SECURED AT 1200 INTERVALS MAXIMUM WITH CLAMP 010495-01-000 AND SCREW 000G67-10-12U OR EQUIVALENT.
- 2. TUBING TO BE INSTALLED WITH SUFFICIENT SLOPE TO PROVIDE DRAINAGE TO NEAREST VALVE.
- 1. PLASTIC FITTINGS TO BE SEALED WITH SEALANT 084456-01-000.

144 REFRIGERATOR-DOUBLE DOOR  
 79W REFRIGERATOR-4 DOOR

		COPYRIGHT 2014 WINNEBAGO INDUSTRIES, INC.
DFTR	ORIG. DATE	
CHKR	ALL DIMENSIONS ARE IN MILLIMETERS	
P.E.		
M.E.	FIRST USED	
DSNR	15 E35F	
UNSPECIFIED TOLERANCES ARE:		
WHOLE DIM (X)	: 3	
ONE-PLACE (X.X)	: 1.5	
TWO-PLACE (X.XX)	: 0.50	
ANGLE	: 1°	
THIRD ANGLE PROJECTION		
DO NOT SCALE DRAWING	REFER TO ES0018 FOR FASTENER TIGHTENING GUIDELINES	
TITLE: WATER SYSTEM INSTL		
SHEET 1 OF 5	PART NO	188496
REF:	1	14-Jul-2015

FOR WATER CALLOUTS SEE DWG NO 116230-01-000

\* 188496 \*



FAUCET-LAV  
186417-01-CHT

BREAKER-VACUUM  
125697-04-000  
CHECK VALVE  
125697-03-000

FAUCET-GAL,SGL CNTL,HI SPOUT  
193458-01-CHT

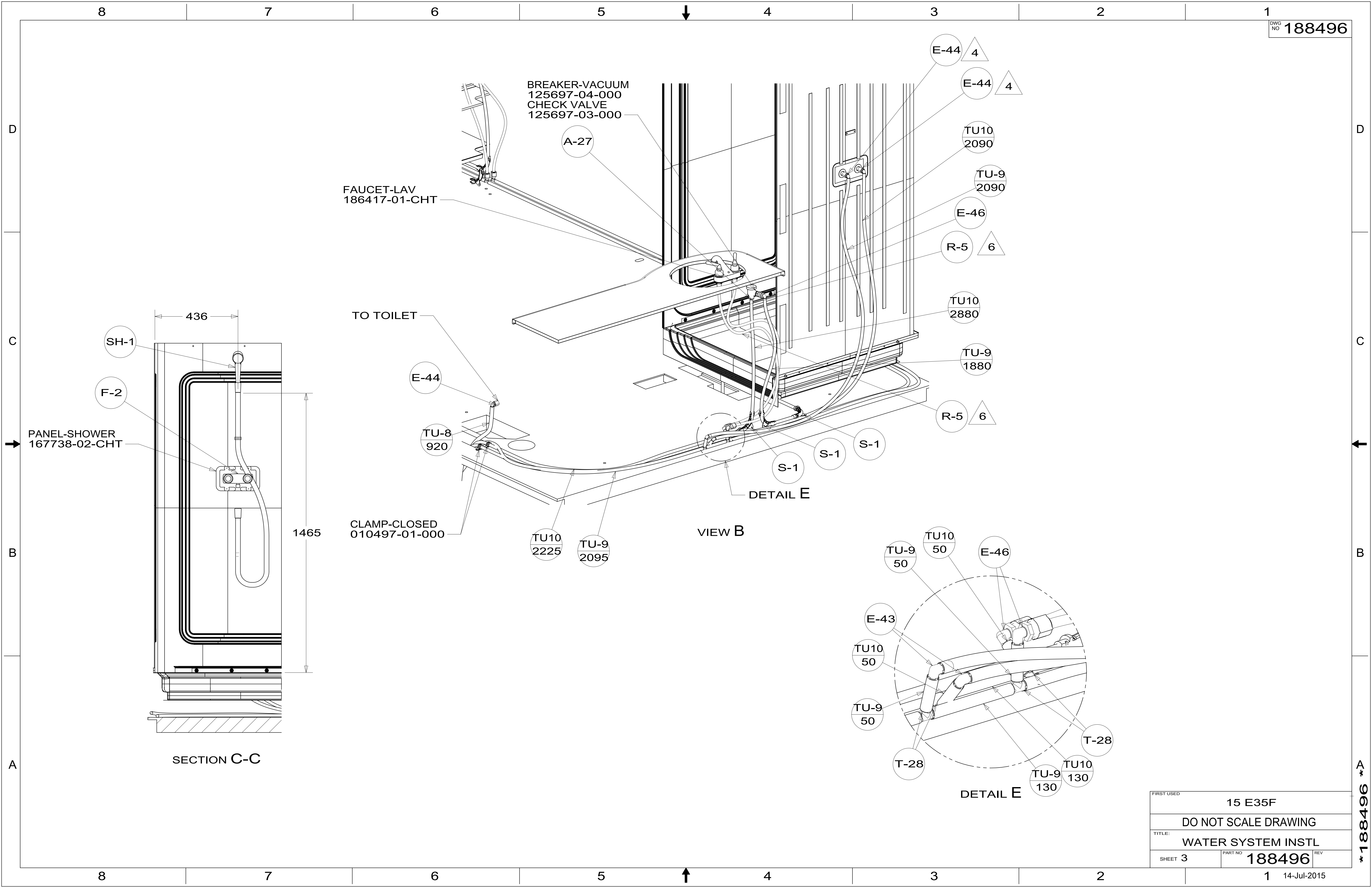
VIEW A

SECTION D-D

SECTION W-W  
79W

FIRST USED	15 E35F	
TITLE:	DO NOT SCALE DRAWING	
SHEET 2	PART NO	188496
	REV	1
		14-Jul-2015

\*188496\*



FIRST USED	15 E35F	
TITLE:	DO NOT SCALE DRAWING	
	WATER SYSTEM INSTL	
SHEET 3	PART NO 188496	REV
	1	14-Jul-2015

\*188496\*

TANK ASM-WATER,74 GAL  
174701-04-000

INSULATION-DRAINAGE COMPT  
168508-50-000

INSULATION-DRAINAGE COMPT  
168508-50-000

INSULATION-DRAINAGE COMPT  
168508-50-000

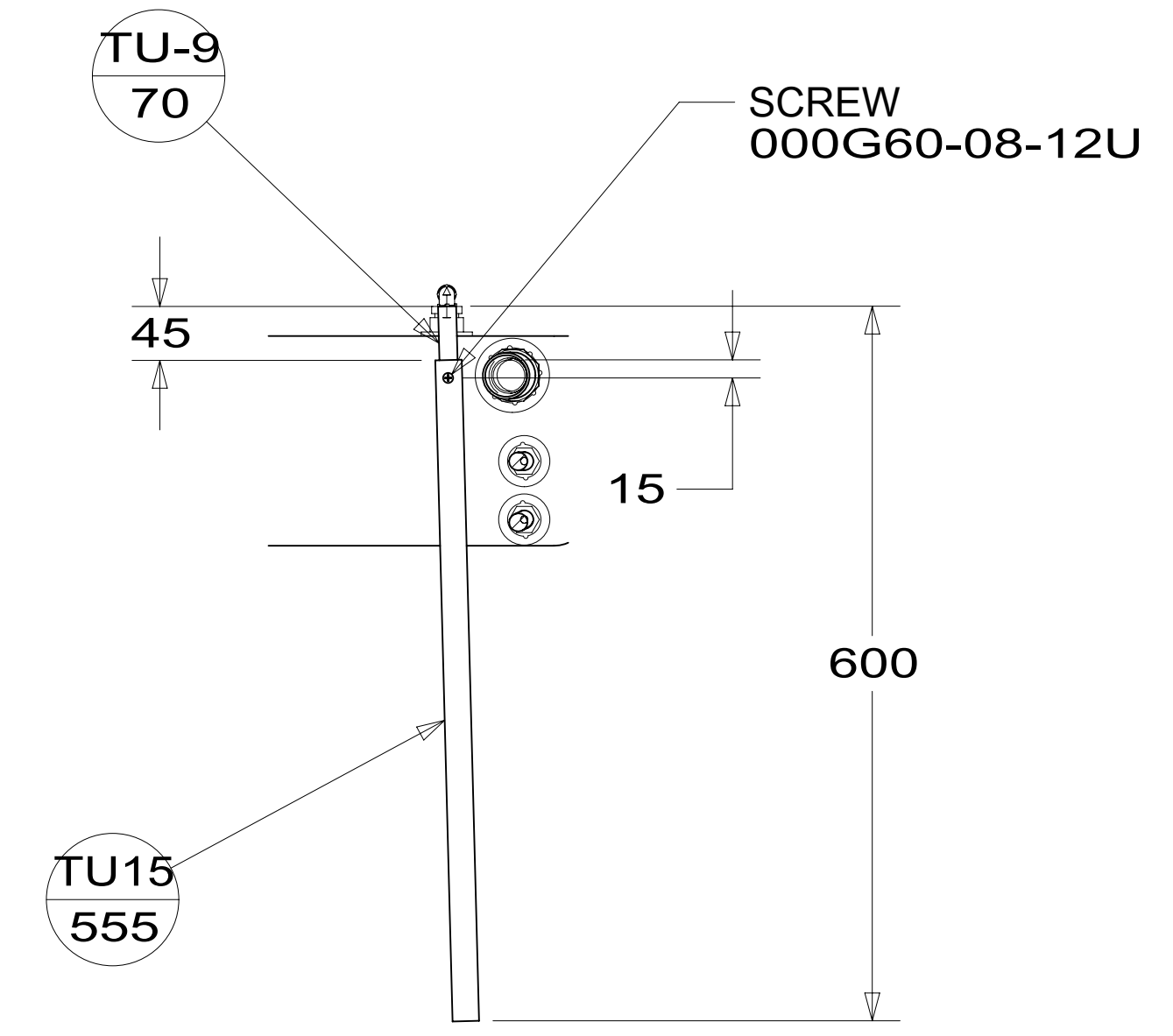
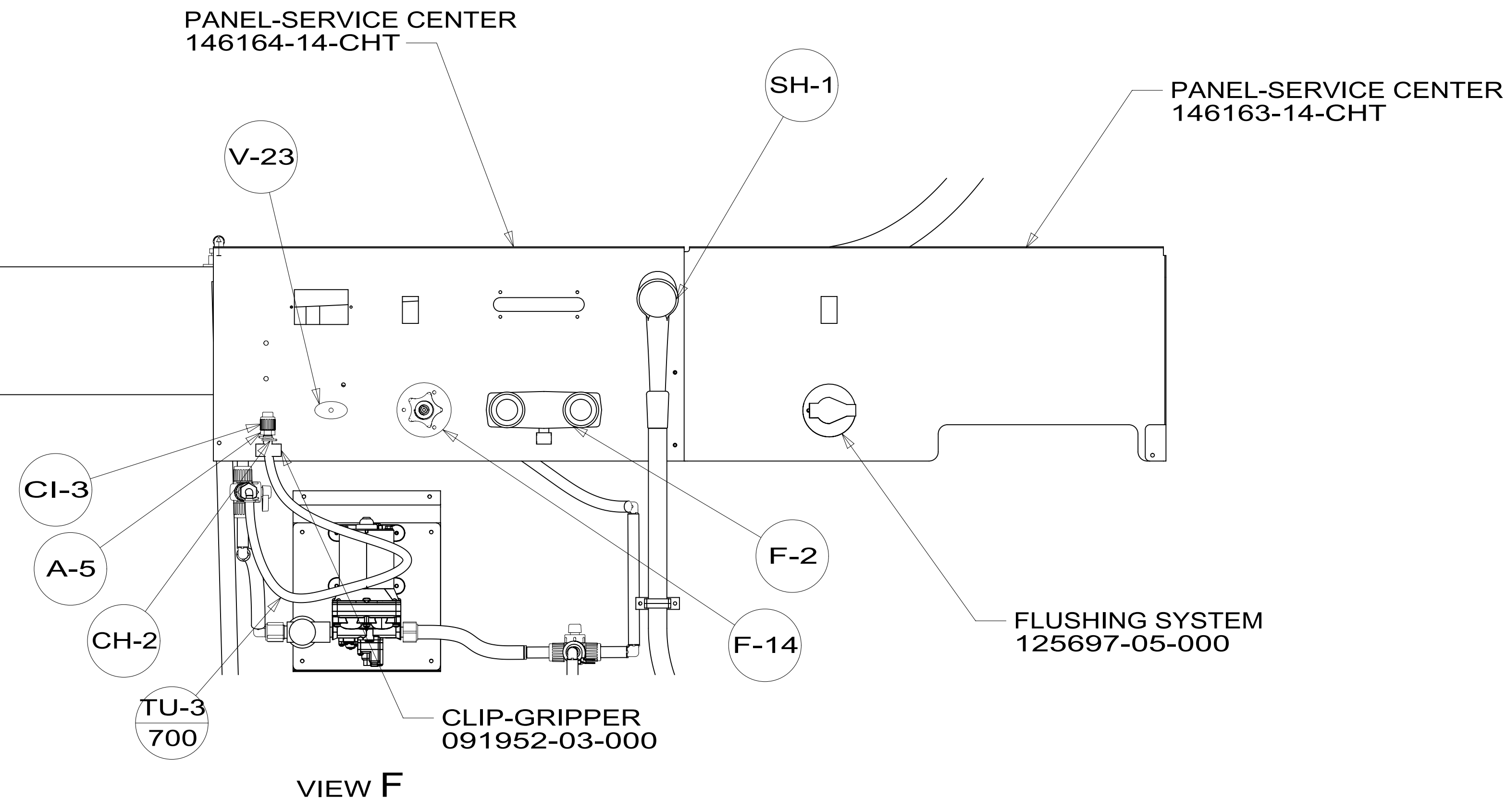
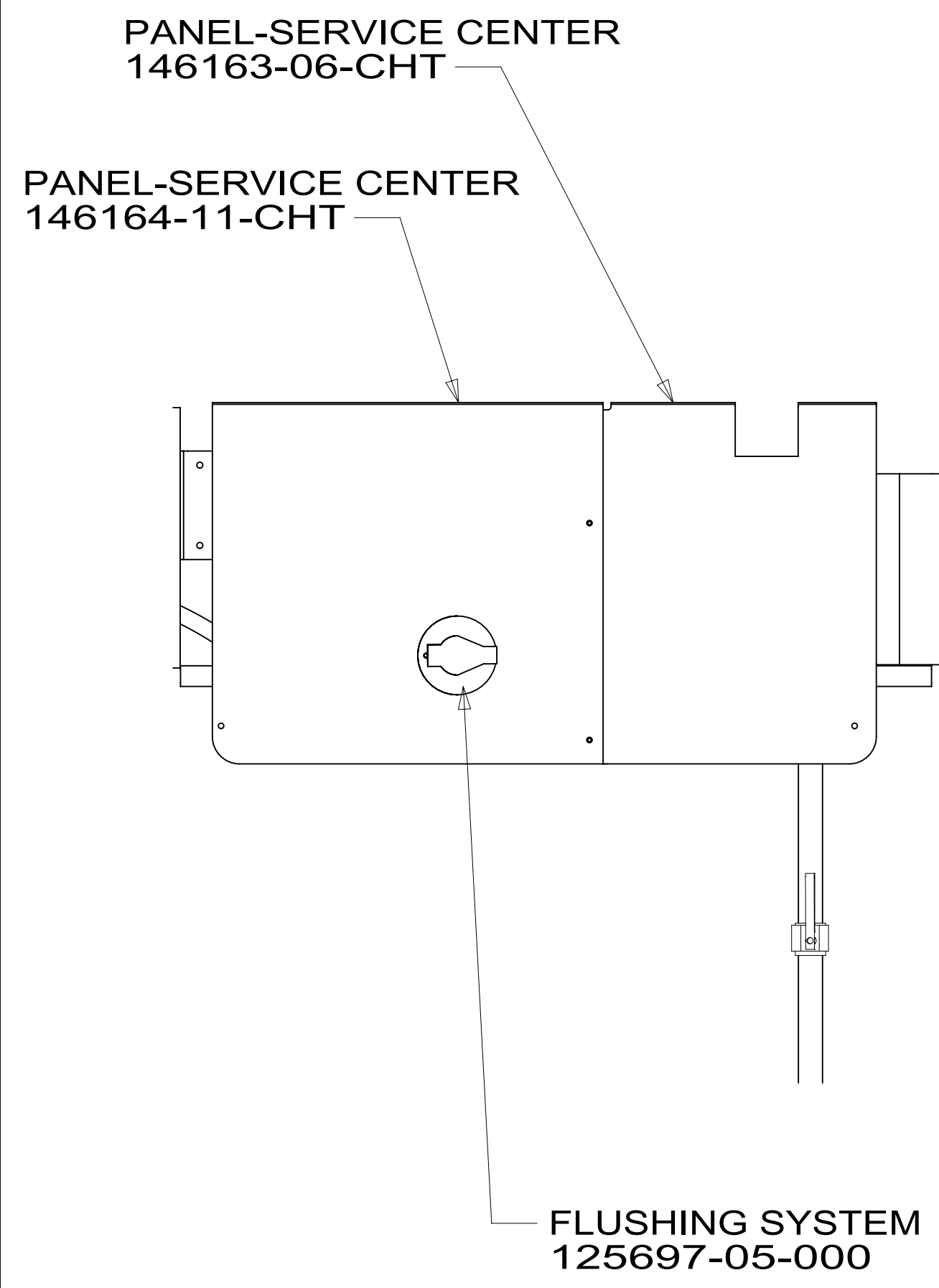
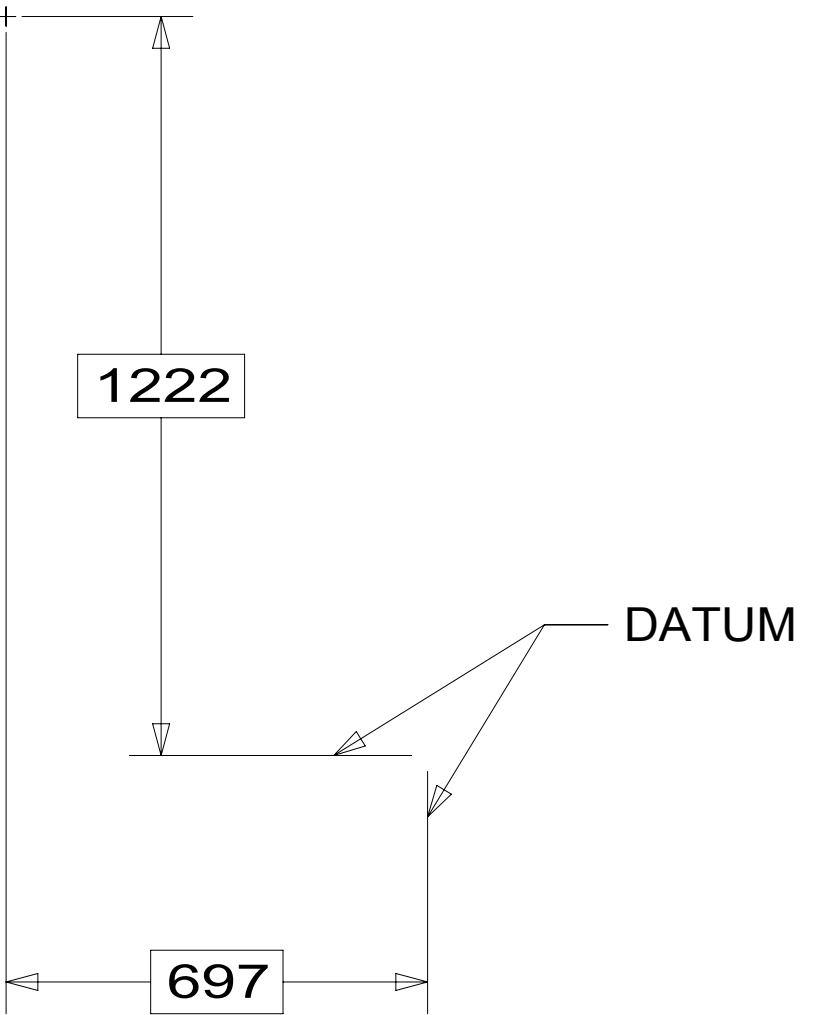
INSULATION-DRAINAGE COMPT  
168508-32-000(2)

BRACKET-ANGLE,W/HOLES  
094756-02-CHT

STL-TUBE  
123963-34-CHT

WATER FILL  
131081-04-XXX

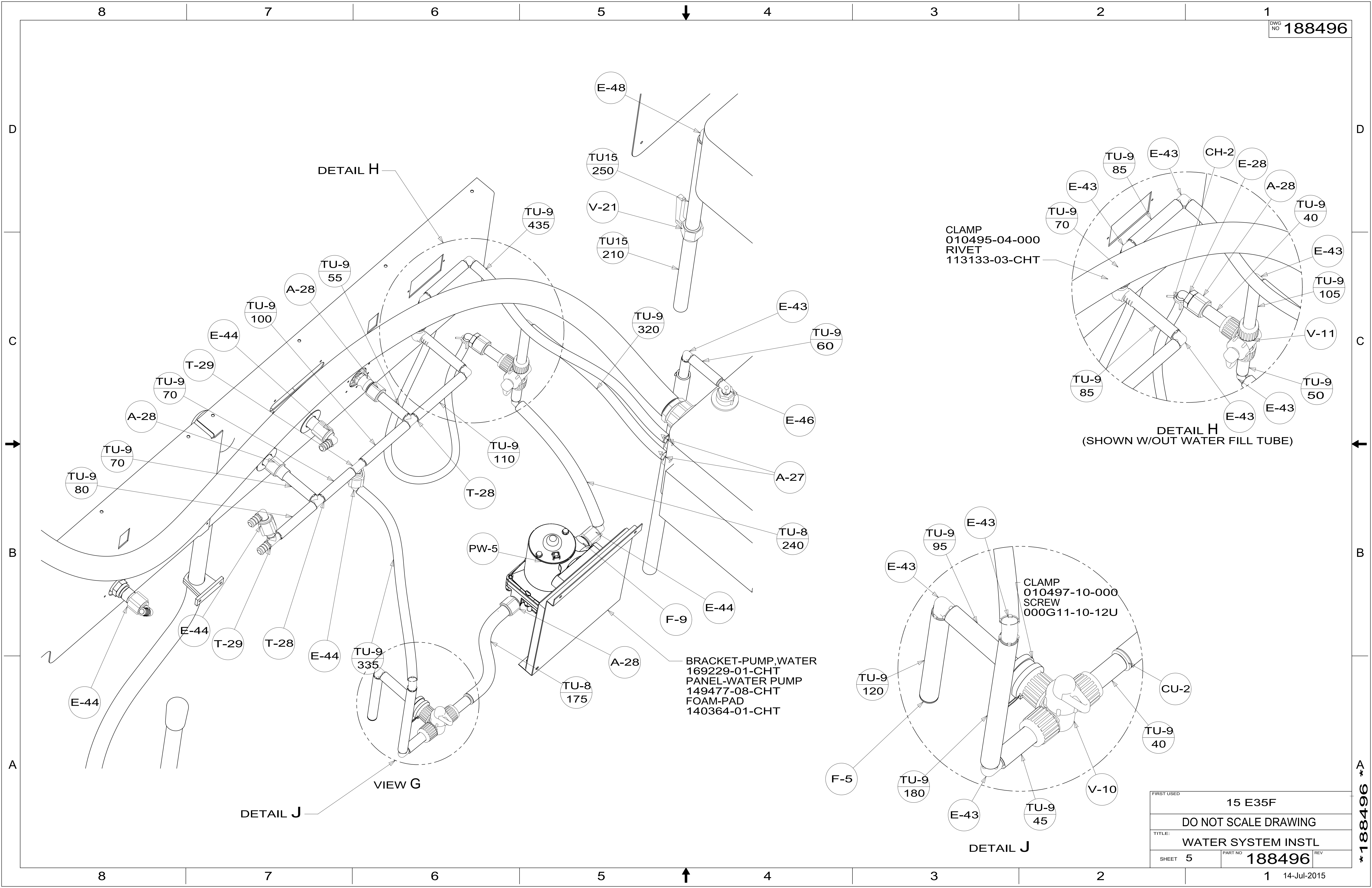
### SHOWING ONLY TANKS AND DRAINS



FIRST USED	15 E35F	
TITLE:	DO NOT SCALE DRAWING	
TITLE:	WATER SYSTEM INSTL	
SHEET 4	PART NO	188496
	REV	1
		14-Jul-2015

\*188496\*





FIRST USED	15 E35F		
TITLE:	DO NOT SCALE DRAWING		
SHEET	5	PART NO	188496
		REV	1
14-Jul-2015			

\*188496\*