

8

7

6

5

4

3

2

1

|          |                 |        |          |
|----------|-----------------|--------|----------|
| RELEASE  | REV/DATE        | DWG NO | 189024   |
| REV ZONE | REVISION RECORD | DATE   | DFT-ORIG |

D

D

C

C

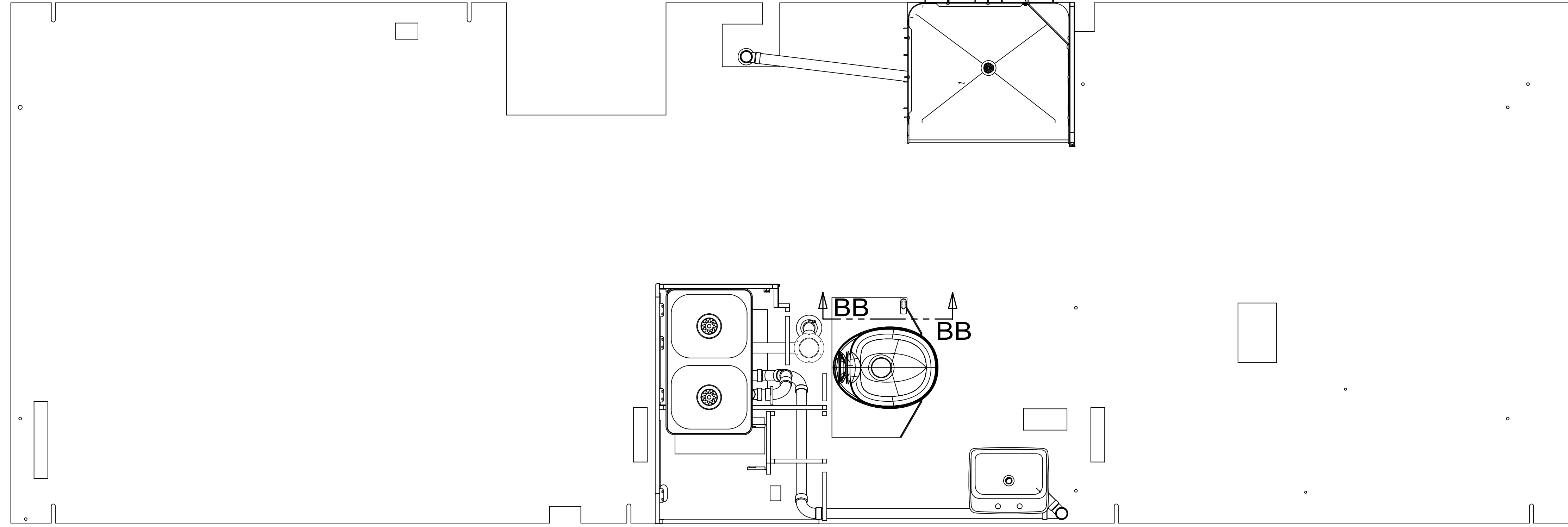
B

B

A

A

FRONT OF COACH



- 9. SEE DRAWING 061607 FOR INSTALLATION OF GROMMETS.
- 8. SECURE DRAINAGE PIPES TO CABINET USING WIRE TIE 108046-02-000, AND SCREW 000G67-10-12U AT INTERVALS OF NOT OF NOT MORE THAN 4 FEET APART.
- 7. SECURE VENT PIPE TO FLOOR WITH CLAMP 062401-02-000 (2), SCREW 000G67-10-12U (2), BRACKET 136878-01-CHT (2).
- 6. VENT PIPE MUST PROJECT 51 MIN AND 64 MAX ABOVE ROOF FOR PROPER FIT AND FUNCTION. ADD S-1 (116666-01-CHT SEAL-VENT PIPE) AROUND PIPE ON ROOF BEFORE VENT CAP IS INSTALLED.
- 5. SEAL AROUND SHOWER WITH SILICONE.
- 4. USE SMOOTH PLUMBERS PUTTY 167459-01-000 TO SEAL STRAINER (0.2 PER STRAINER).
- 3. ALL PIPE AND FITTINGS TO BE ASSEMBLED WITH SOLVENT 004020-01-000 (USA), 004020-02-000 (CAN)
- 2. SLOPE OF TRAP ARM MUST BE 6 PER 305 mm.
- 1. SLOPE OF HORIZONTAL PIPING TO BE MINIMUM OF 3 PER 305 mm.

NOTES:

- 265 CODES/STDS-CSA/CMVSS
- 1B1 CODES/STANDARDS-USA

|                              |  |   |
|------------------------------|--|---|
|                              |  | COPYRIGHT 2014<br>WINNEBAGO<br>INDUSTRIES, INC. |
| DFT-ORIG                     | ORIG. DATE   |   |
| CHKR                         | ALL DIMENSIONS ARE IN MILLIMETERS                  |   |
| P.E.                         |  |   |
| M.E.                         | FIRST USED   |   |
| DSNR                         | 15 E30T  |   |
| UNSPECIFIED TOLERANCES ARE:  |  | MATERIAL:                                       |
| WHOLE DIM (X)                | : 3  |   |
| ONE-PLACE (X.X)              | :  |   |
| TWO-PLACE (X.XX)             | :  |   |
| ANGLE                        | :  |   |
| THIRD ANGLE PROJECTION       |  |   |
| DO NOT SCALE DRAWING         | REFER TO ES0018 FOR FASTENER TIGHTENING GUIDELINES |   |
| TITLE: DRAINAGE SYSTEM INSTL |  |   |
| SHEET 1 OF 4                 | PART NO 189024                                     | REV   |
| REF:                         | 1  | 02-Jul-2015                                     |

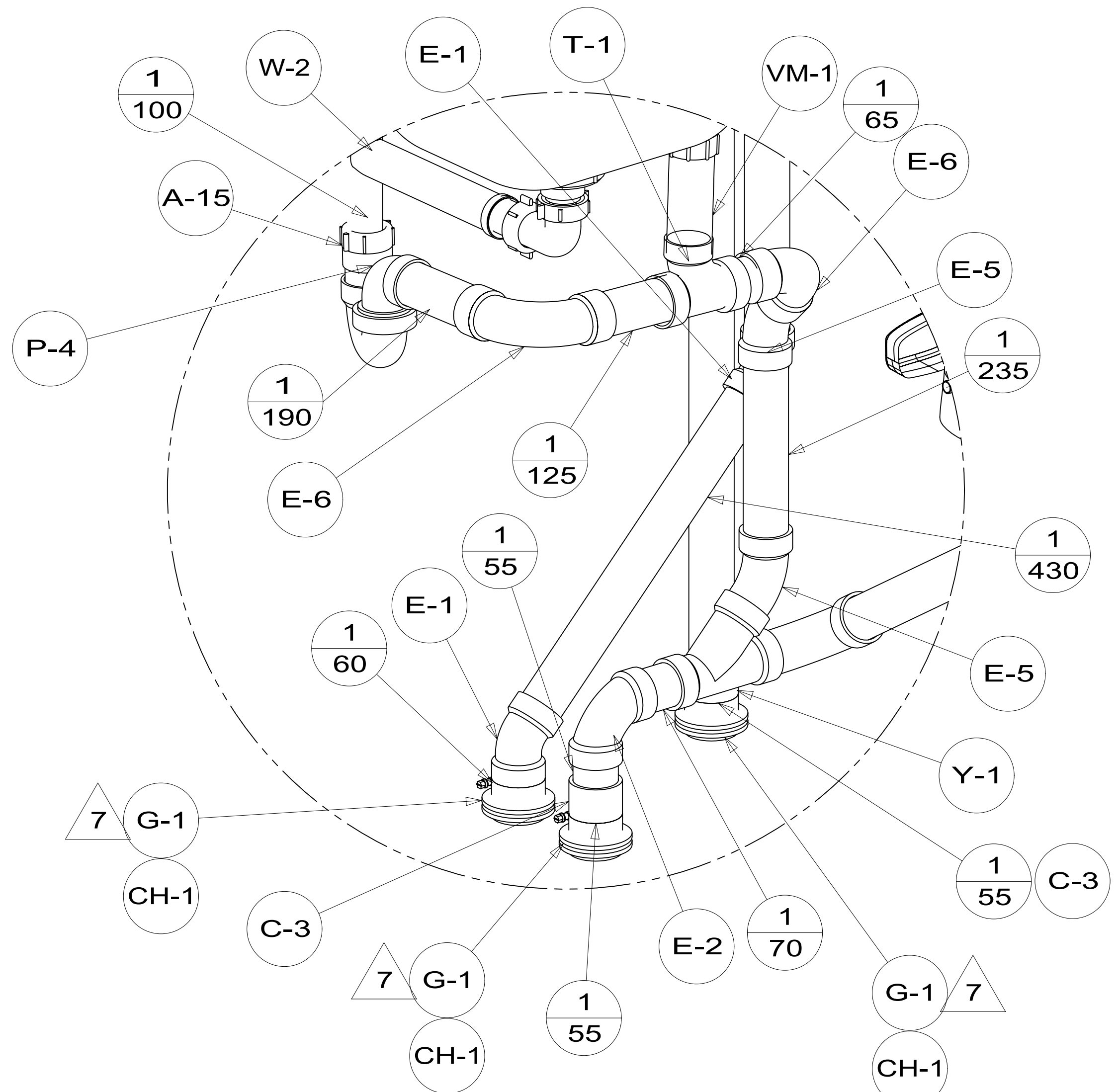
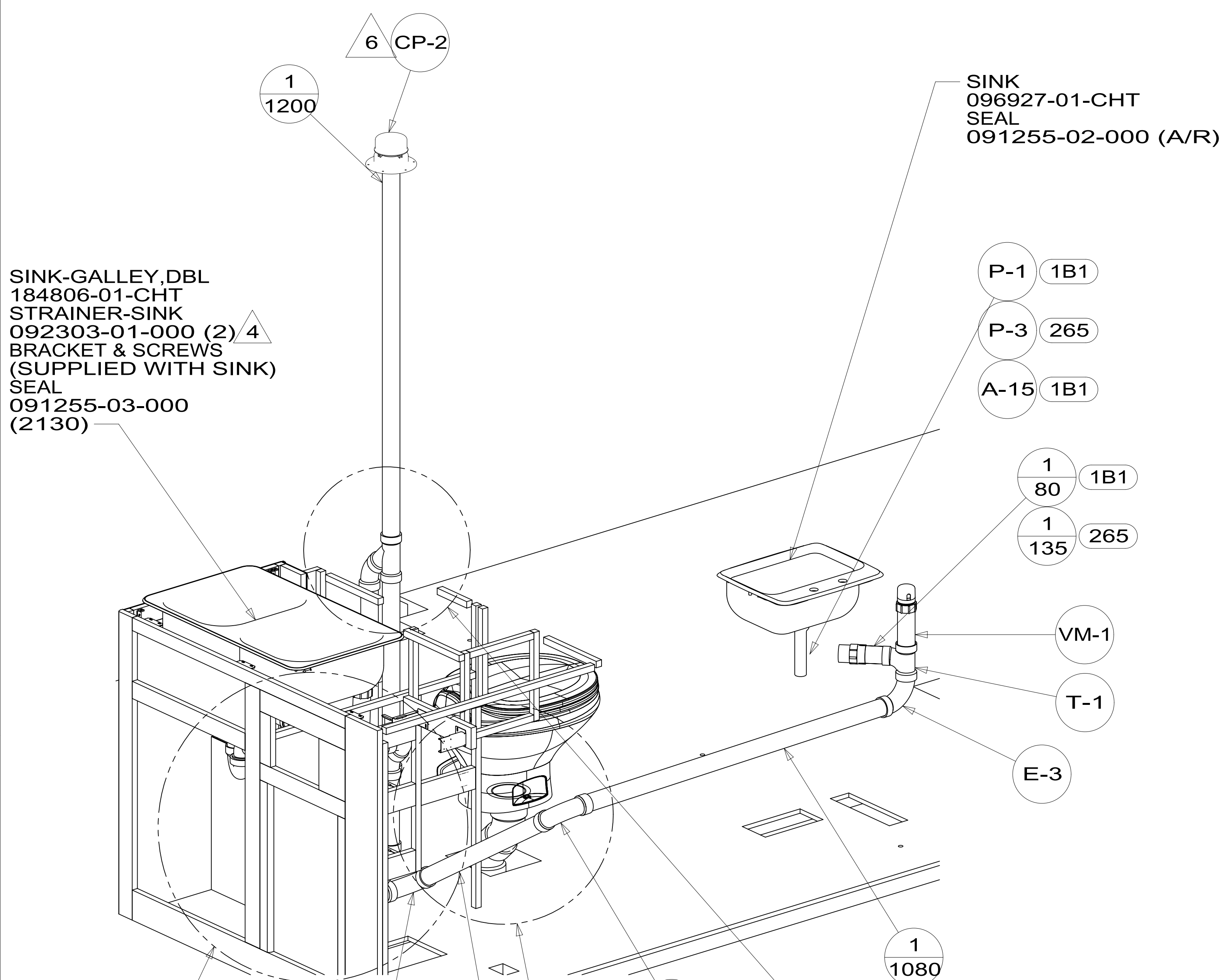
FOR DRAINAGE CALLOUTS SEE DWG NO 116229-01-000

\*189024 \*A

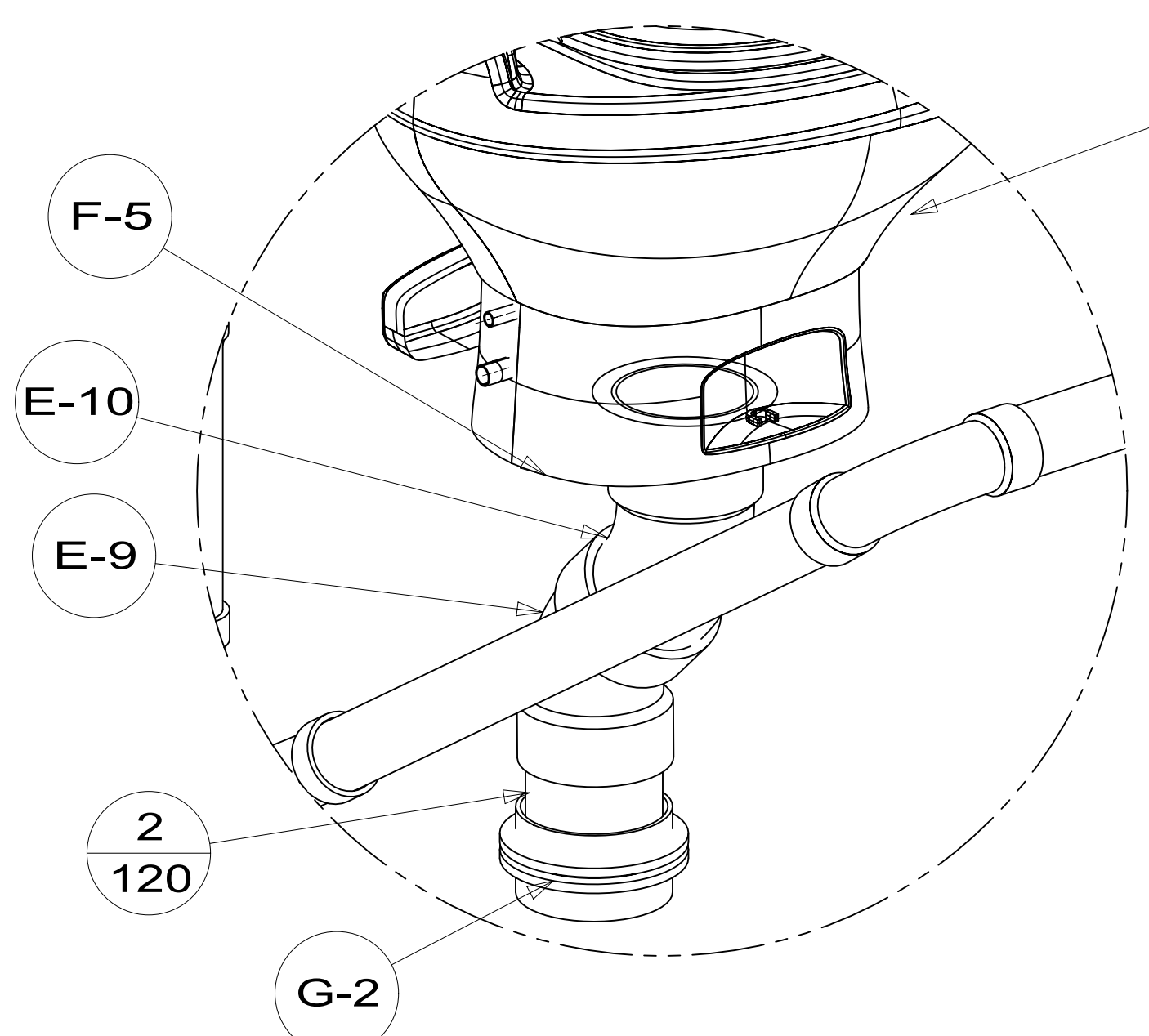
SINK-GALLEY, DBL  
 184806-01-CHT  
 STRAINER-SINK  
 092303-01-000 (2) 4  
 BRACKET & SCREWS  
 (SUPPLIED WITH SINK)  
 SEAL  
 091255-03-000  
 (2130)

SINK  
 096927-01-CHT  
 SEAL  
 091255-02-000 (A/R)

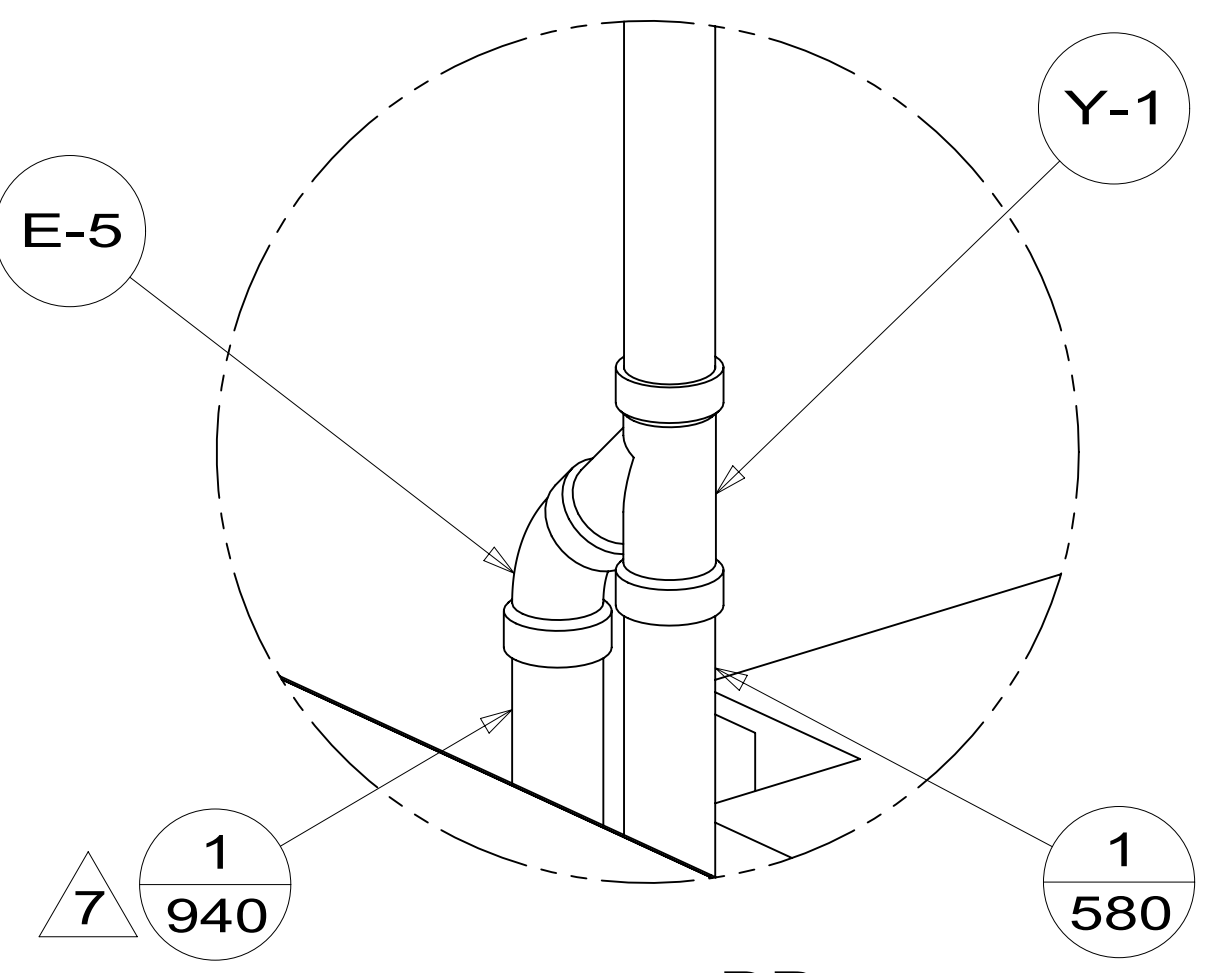
TOILET, LOW  
 160815-04-CHT  
 (FOOT FLUSH)  
 SCREW  
 087721-01-000 (6)



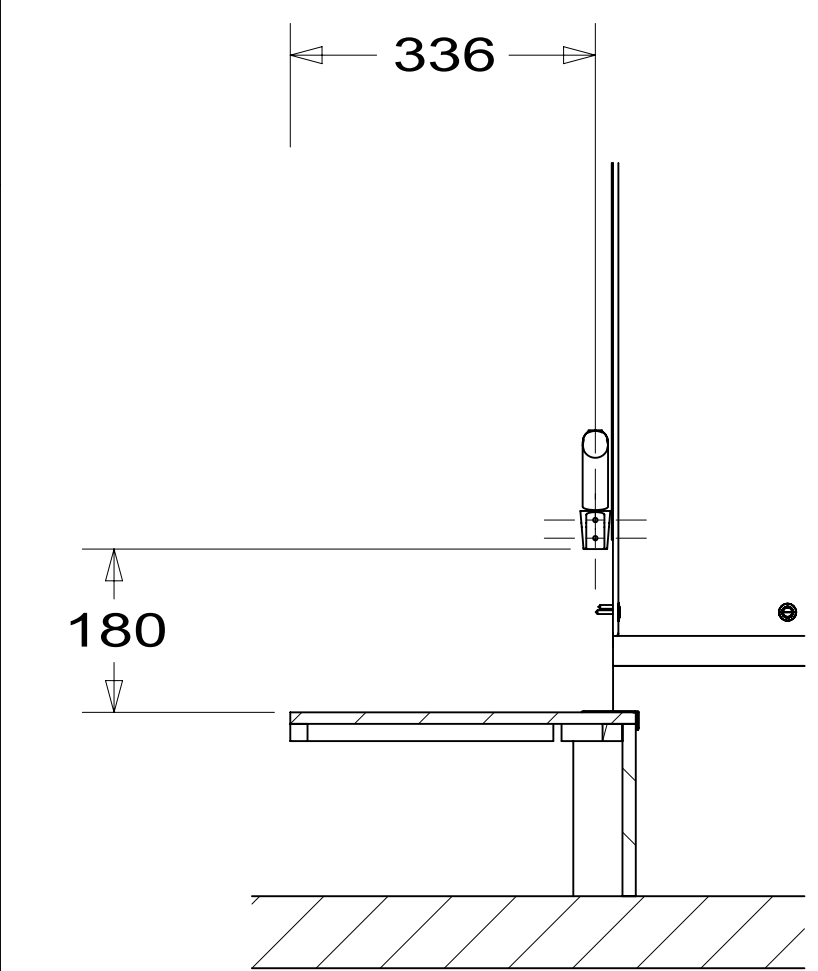
DETAIL BC  
 (SHOWN W/OUT CABINETS AND FLOOR)



DETAIL BE  
 (SHOWN W/OUT CABINETS AND FLOOR)



DETAIL BD  
 (SHOWN W/OUT CABINETS)



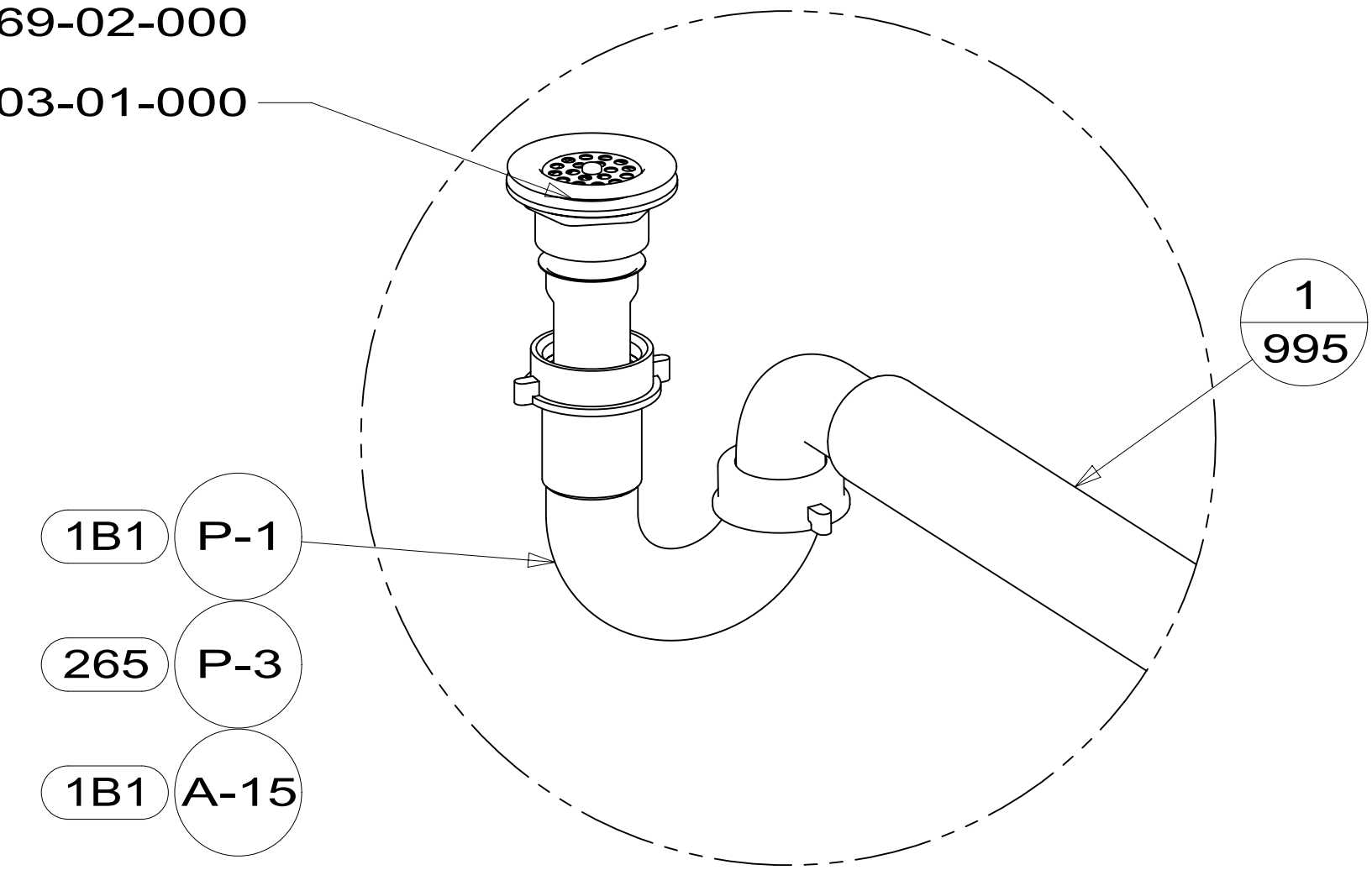
SECTION BB-BB

VIEW BA

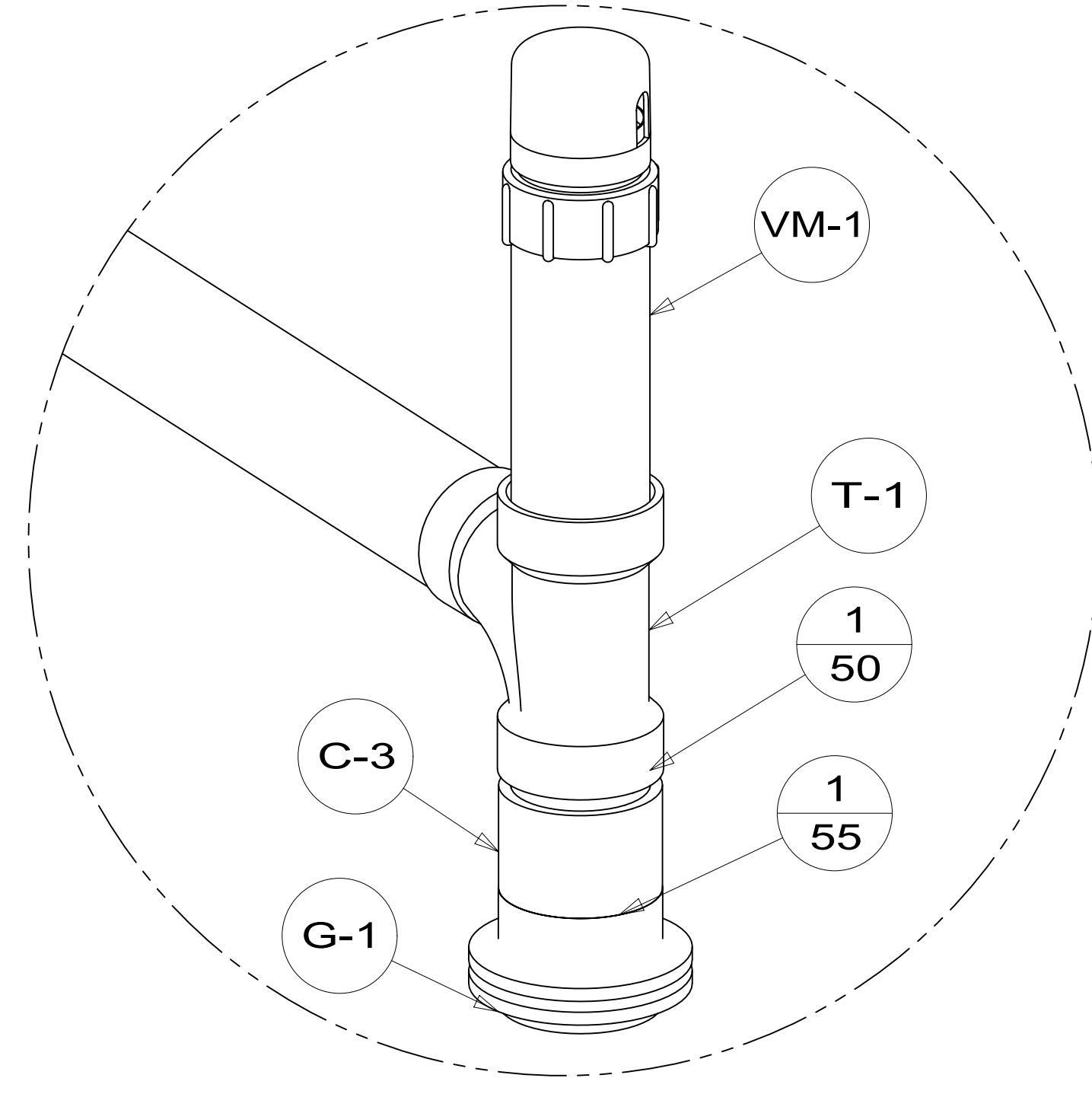
|            |                       |             |
|------------|-----------------------|-------------|
| FIRST USED | 15 E30T               |             |
| TITLE:     | DO NOT SCALE DRAWING  |             |
| TITLE:     | DRAINAGE SYSTEM INSTL |             |
| SHEET 2    | PART NO               | 189024      |
|            | REV                   | 1           |
|            |                       | 02-Jul-2015 |

\*189024 \*A

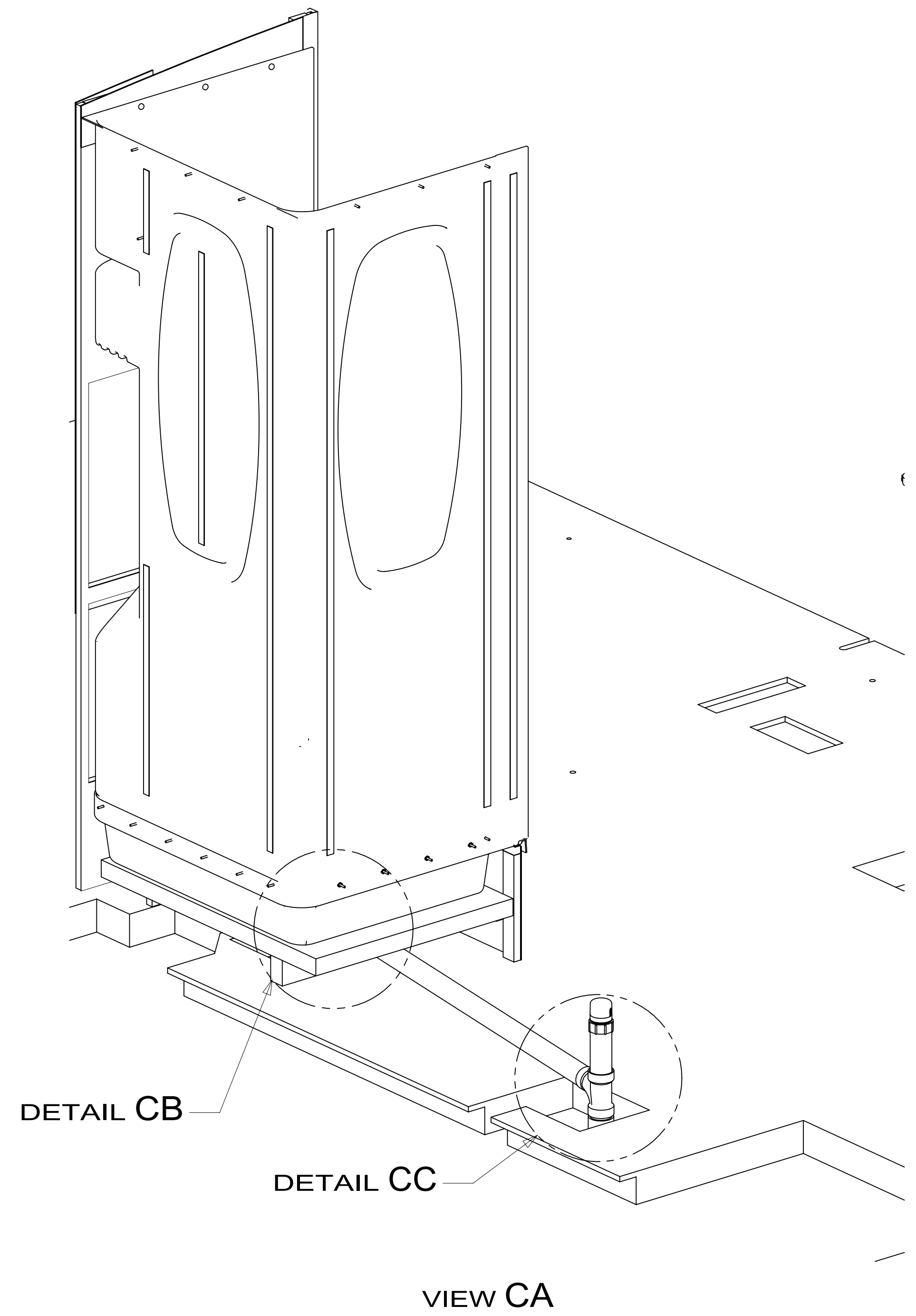
- SHOWER INSTL-ENCLOSURE
- 147936-04-000
- WASHER-RUBBER
- 127440-02-CHT
- SEALER
- 069640-01-000
- STRAINER
- 066440-01-000
- TAIL PIECE
- 011069-02-000
- NUT
- 130403-01-000



DETAIL CB  
(SHOWN W/OUT SHOWER PAN AND FLOOR)



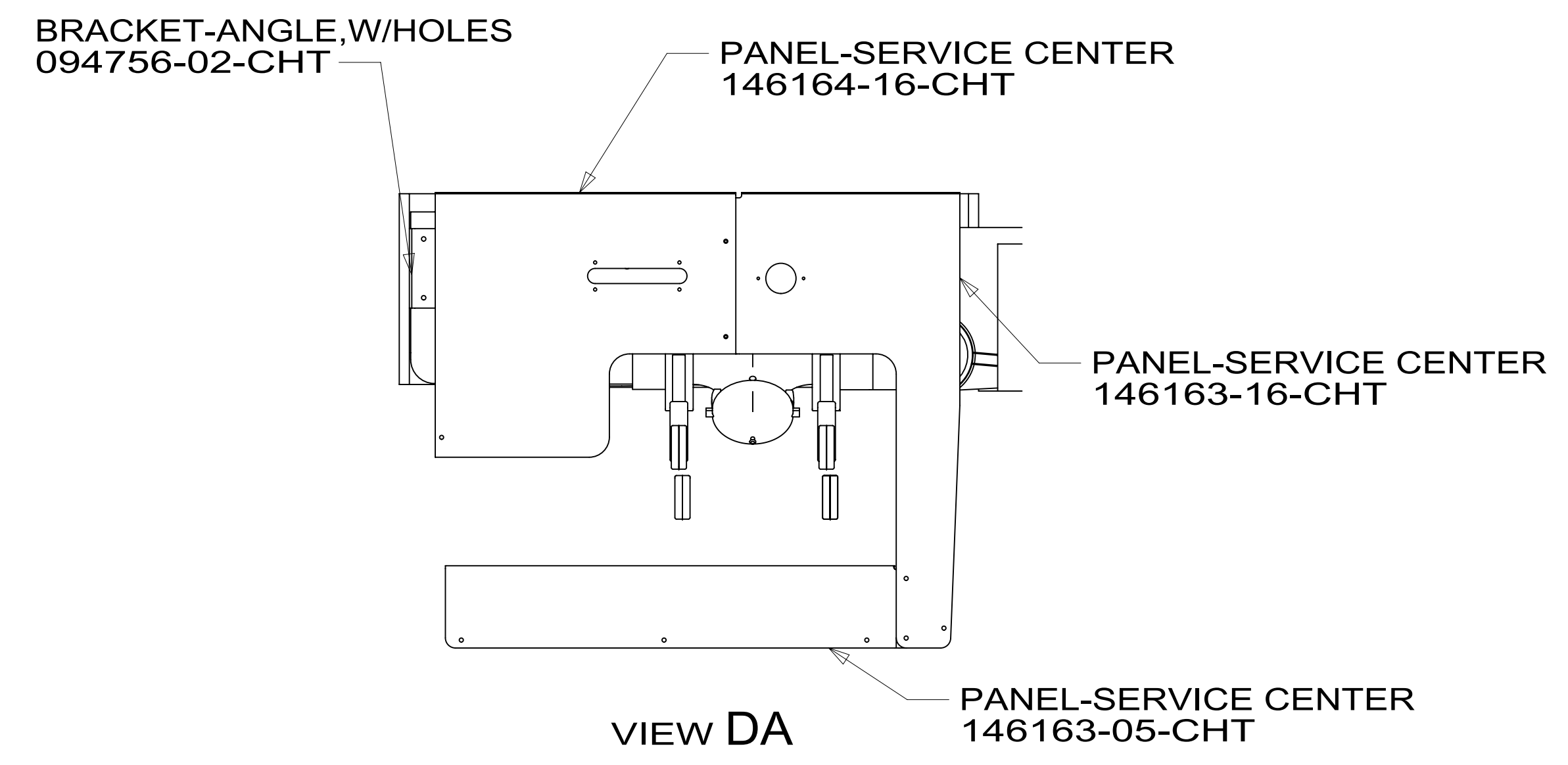
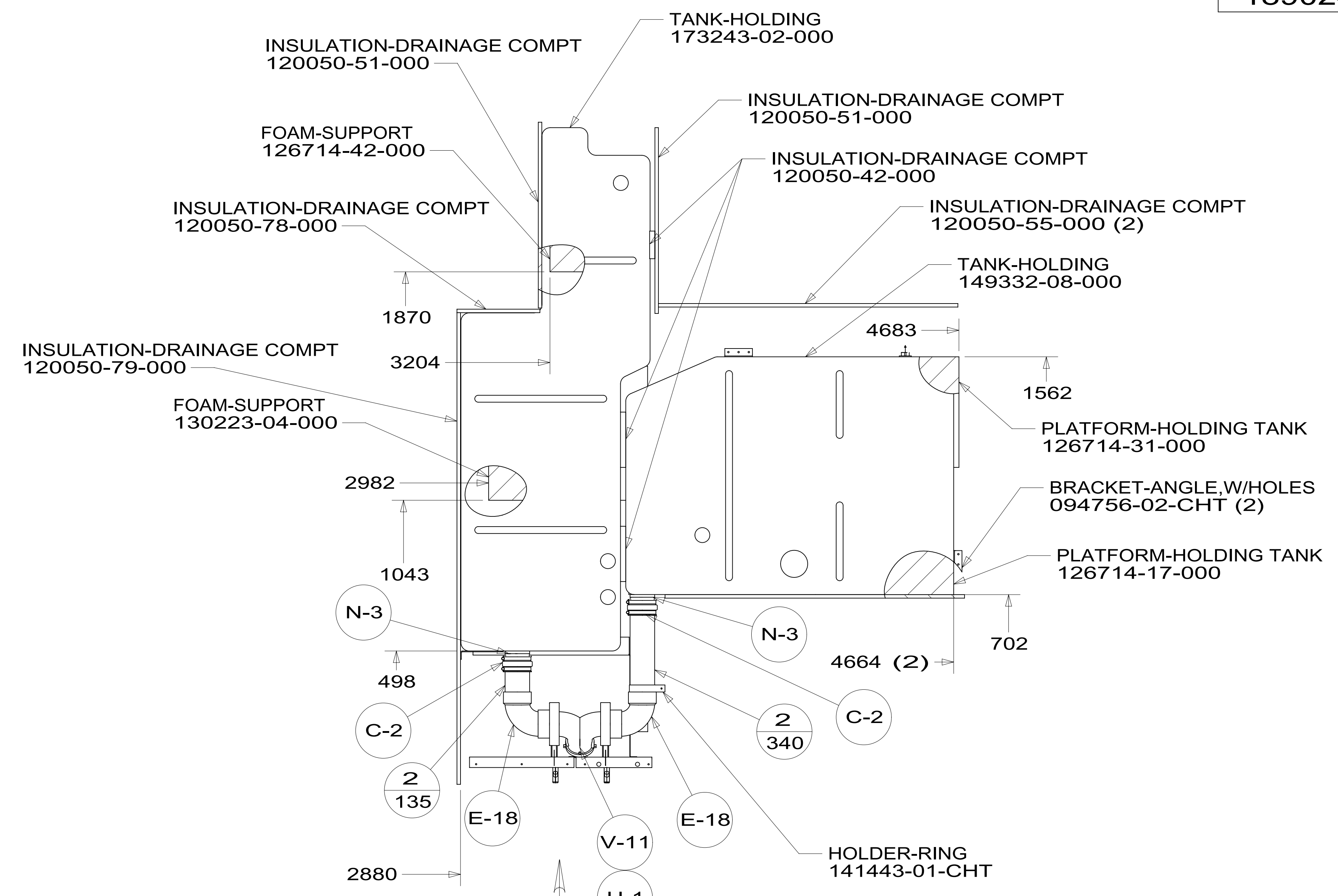
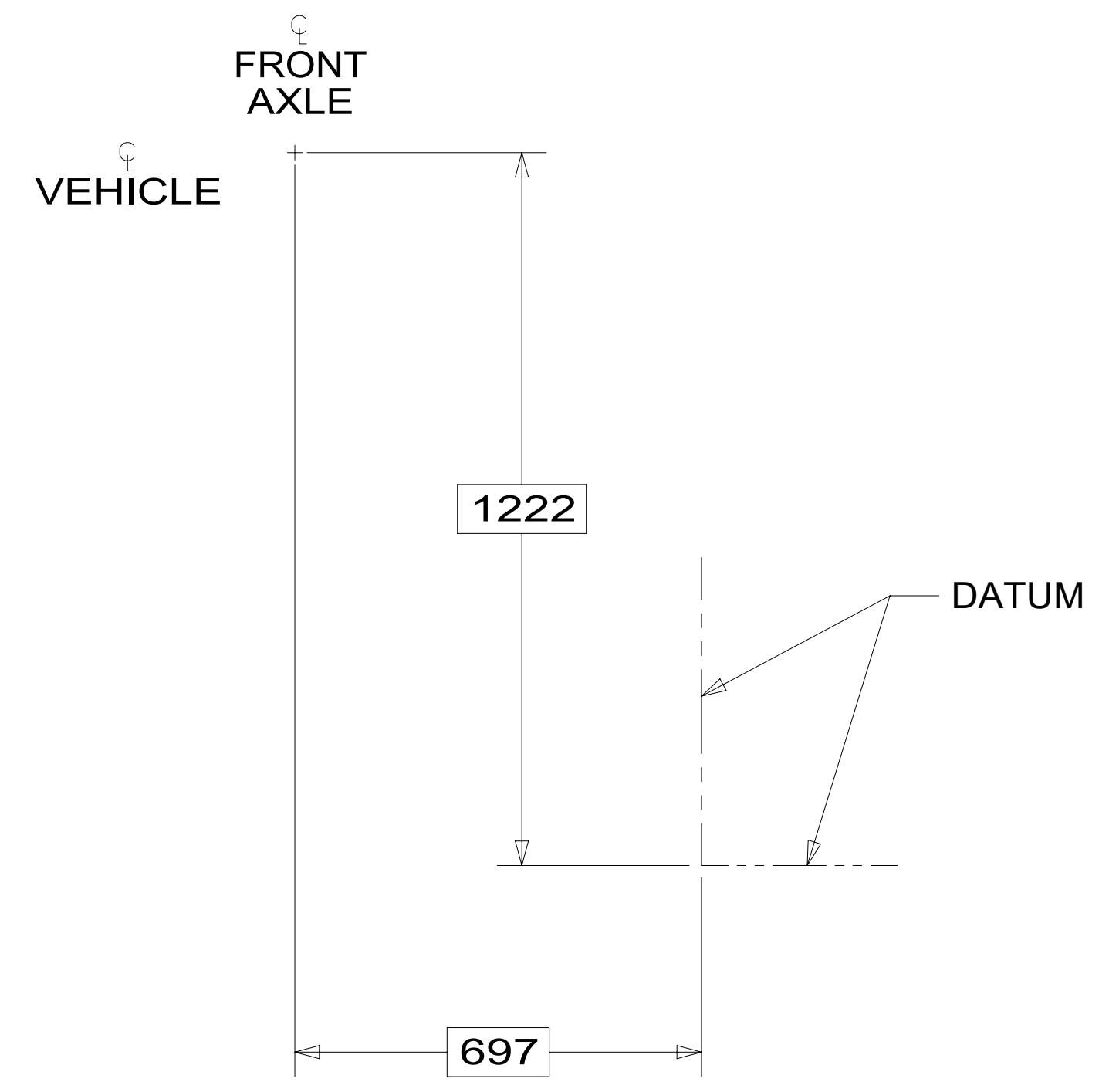
DETAIL CC  
(SHOWN W/OUT CABINETS AND FLOOR)



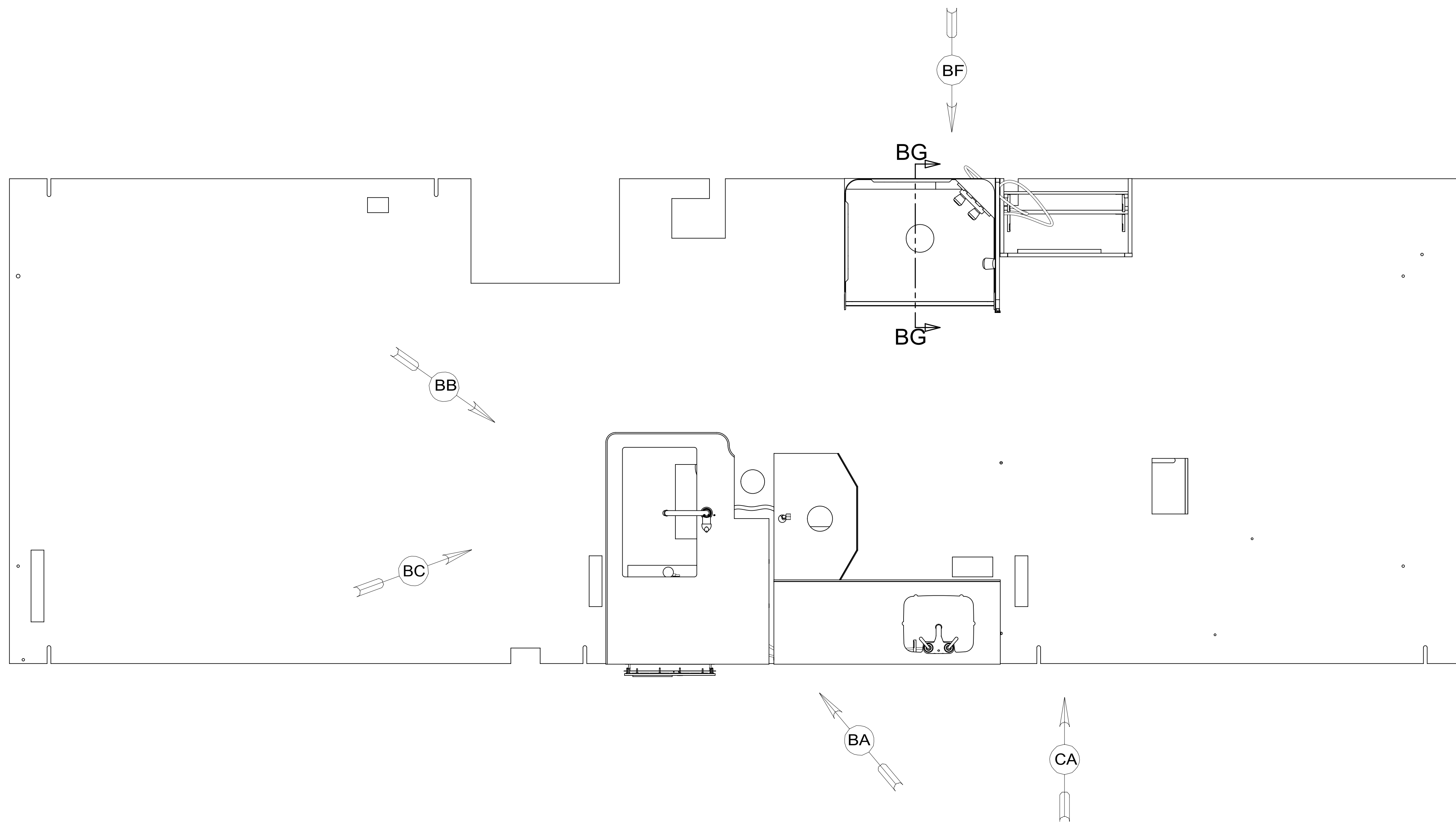
VIEW CA

|                              |                |               |
|------------------------------|----------------|---------------|
| FIRST USED                   | 15 E30T        |               |
| DO NOT SCALE DRAWING         |                |               |
| TITLE: DRAINAGE SYSTEM INSTL |                |               |
| SHEET 3                      | PART NO 189024 | REV           |
|                              |                | 1 02-Jul-2015 |

\*189024 \*A



|            |                       |               |
|------------|-----------------------|---------------|
| FIRST USED | 15 E30T               |               |
| TITLE:     | DO NOT SCALE DRAWING  |               |
| TITLE:     | DRAINAGE SYSTEM INSTL |               |
| SHEET 4    | PART NO 189024        | REV           |
|            |                       | 1 02-Jul-2015 |



9. ALL CRIMP FITTINGS TO 3/4" PEX TUBING REQUIRE 3/4" CLAMP 140171-05-000.
8. ALL CRIMP FITTINGS TO 1/2" PEX TUBING REQUIRE 1/2" CLAMP 140171-03-000.
7. ALL CRIMP FITTINGS TO 5/8" FLEX TUBING REQUIRE 5/8" CLAMP 140171-04-000.
6. LABEL HOT AND COLD SUPPLY TUBES AND TAPE FITTING TO TUBE BEFORE CABINET SET TO PREVENT MOVEMENT.
5. ADD PIPE WRAP (LADDER SCRAP 110157-02-000) INSULATION.
4. ADD TEFLON TAPE 010405-02-000.
3. ALL TUBING TO BE SECURED AT 1200 INTERVALS MAXIMUM WITH CLAMP 010495-01-000 AND SCREW 000G67-10-12U OR EQUIVALENT.
2. TUBING TO BE INSTALLED WITH SUFFICIENT SLOPE TO PROVIDE DRAINAGE TO NEAREST VALVE.
1. PLASTIC FITTINGS TO BE SEALED WITH SEALANT 084456-01-000.

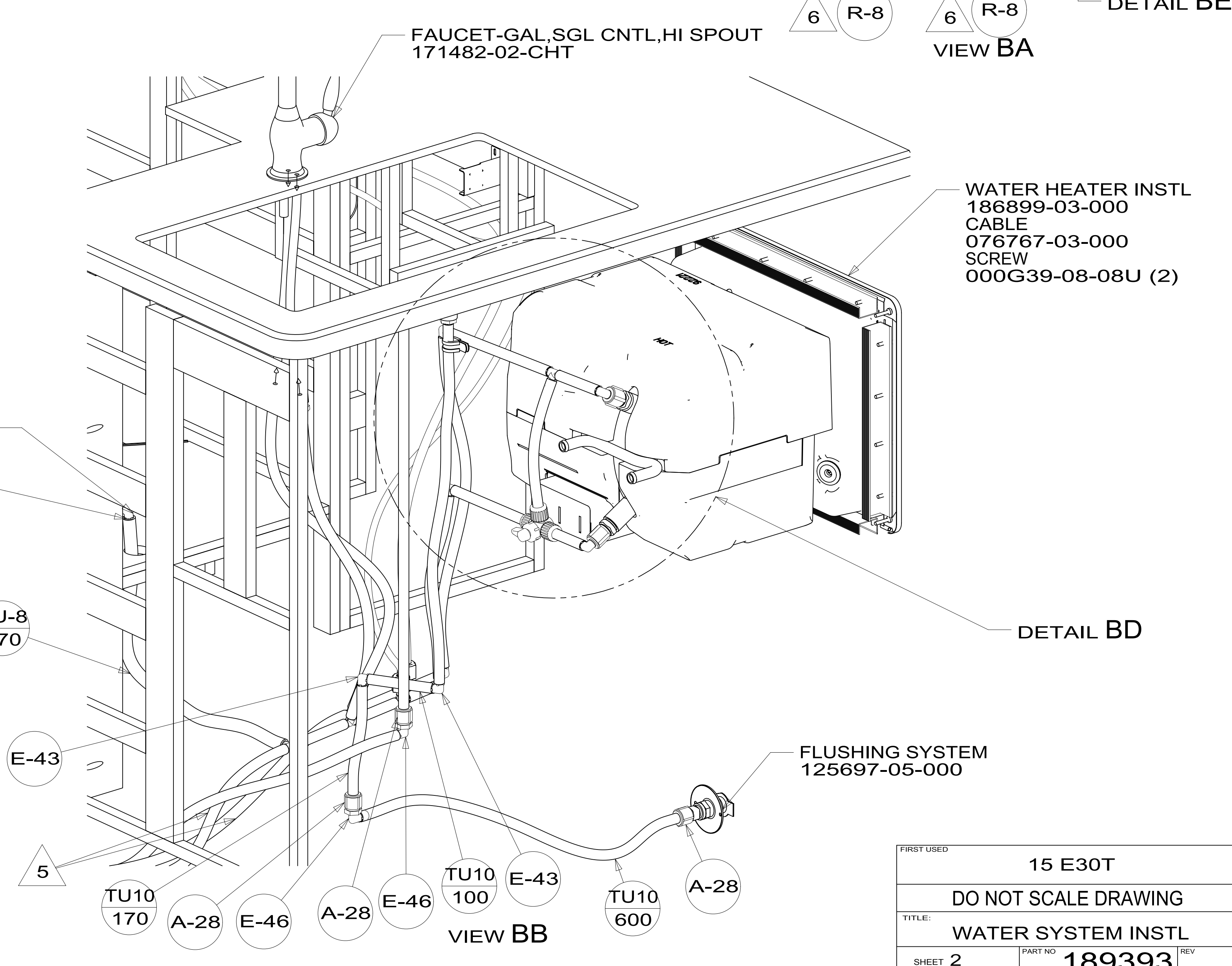
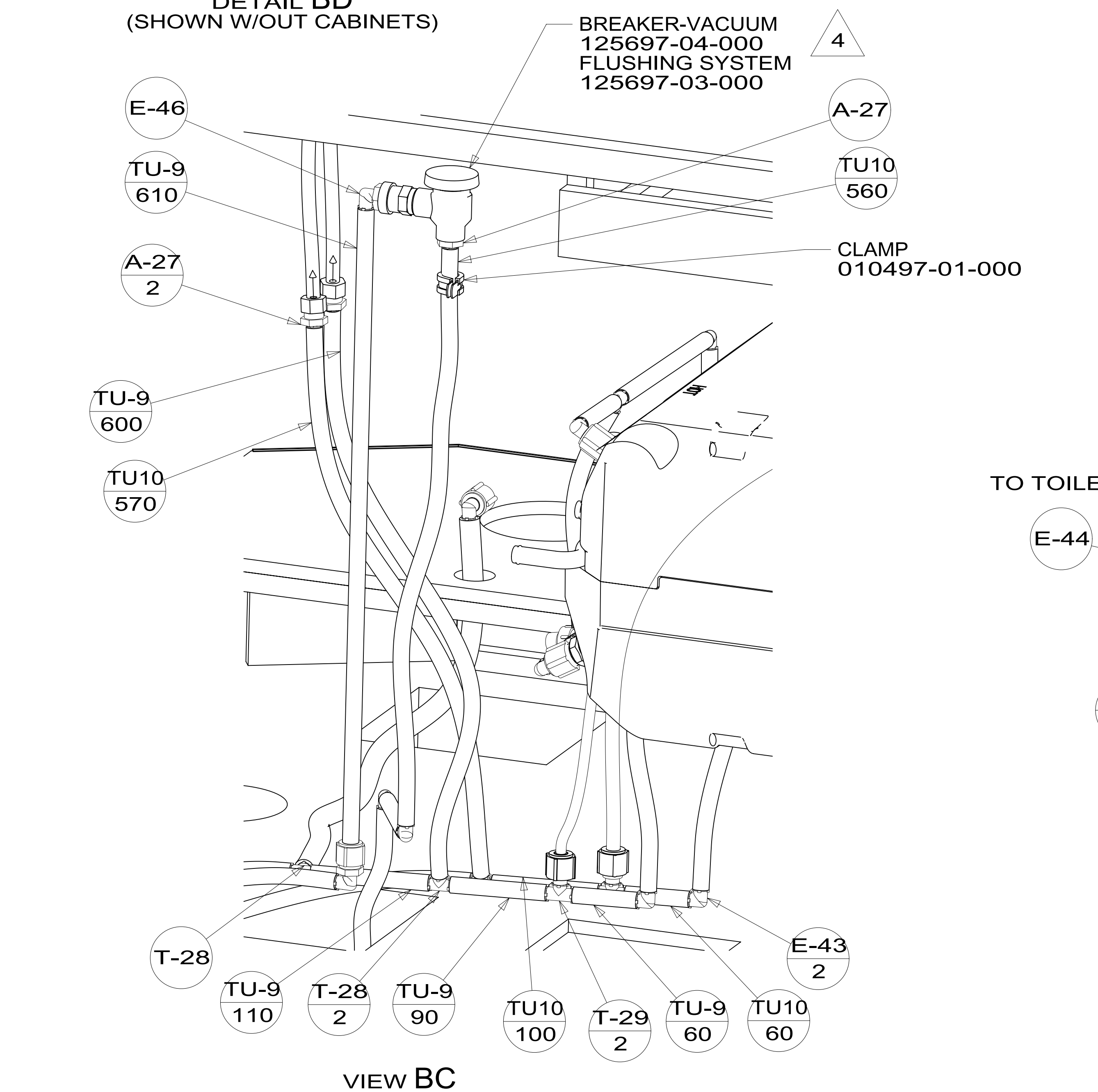
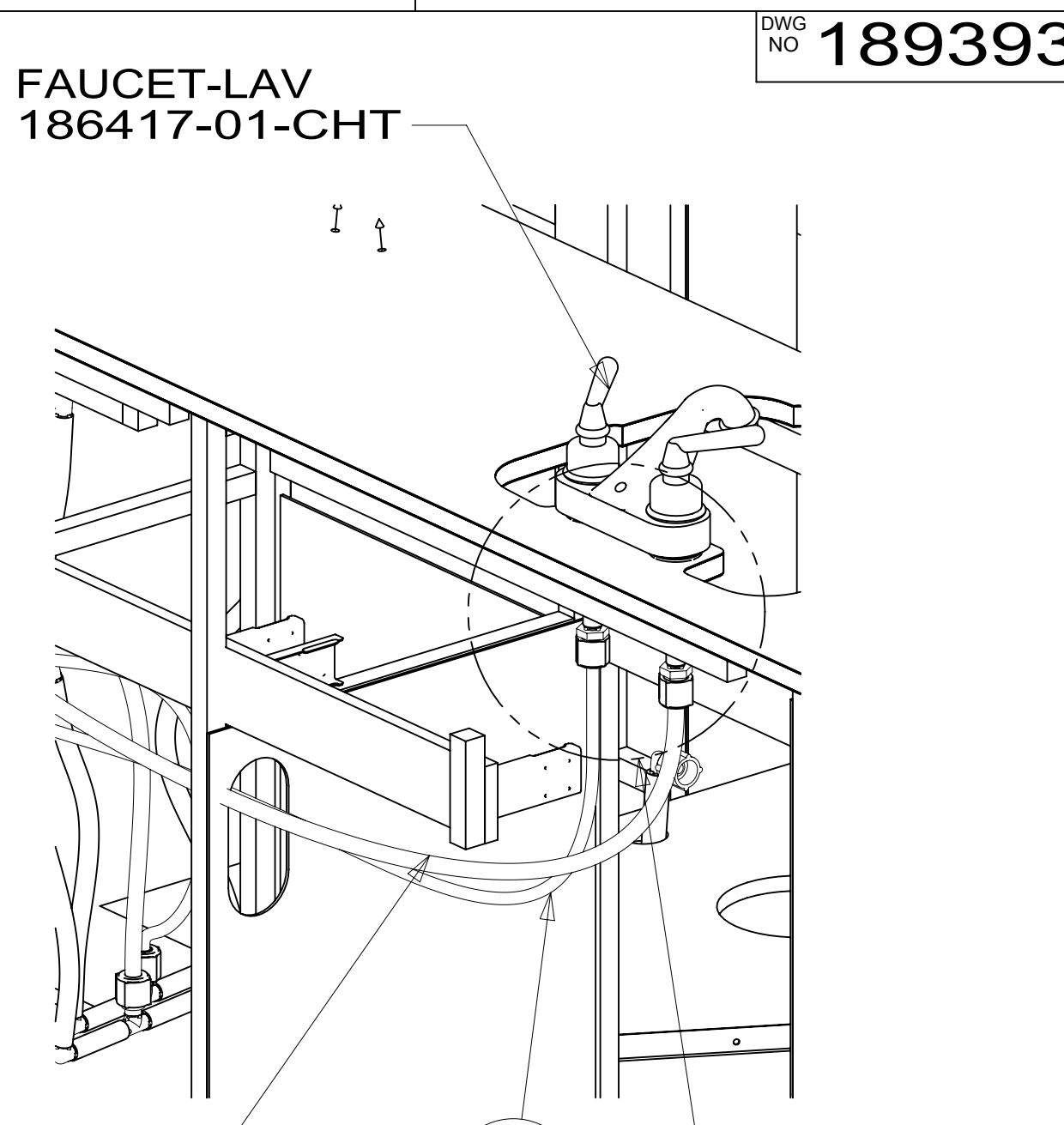
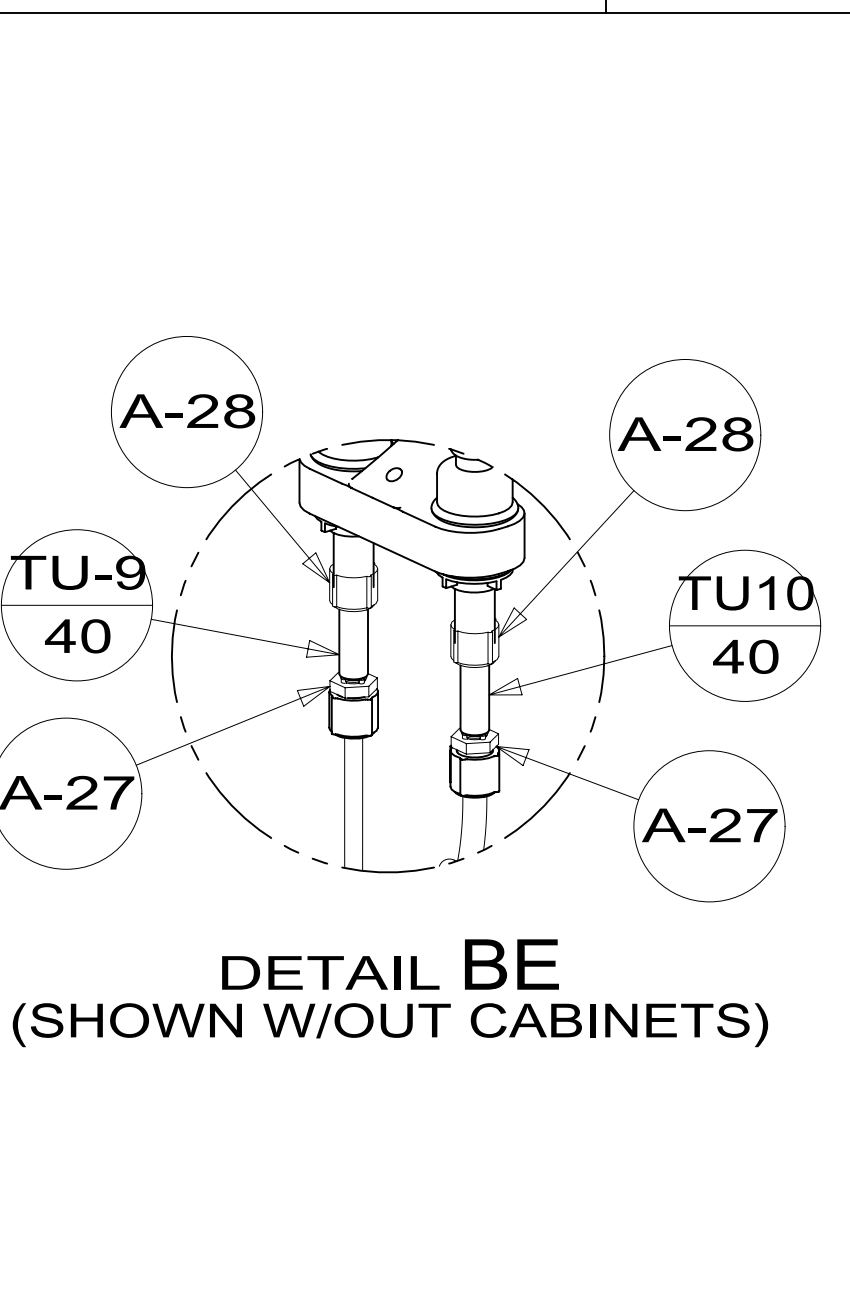
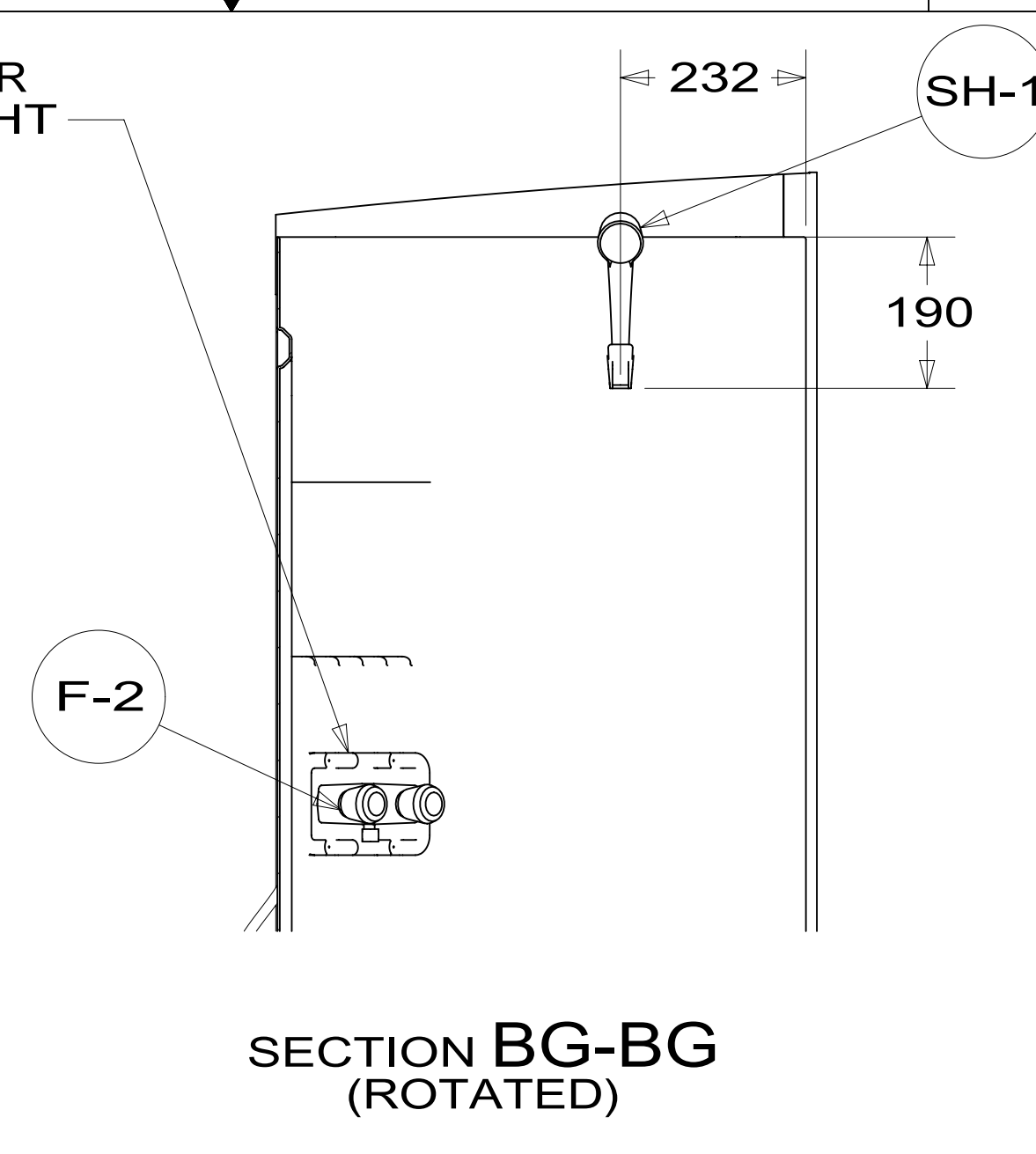
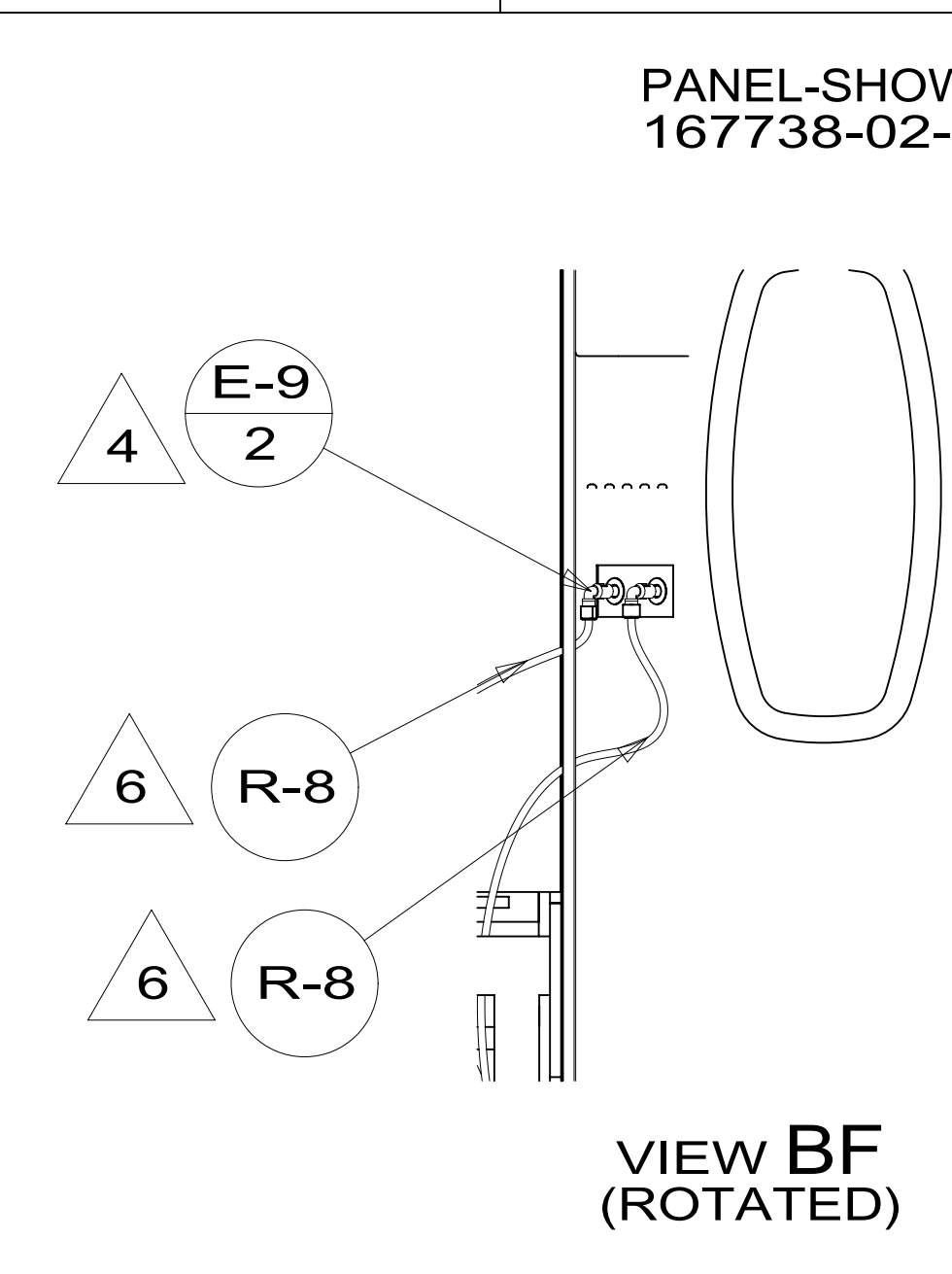
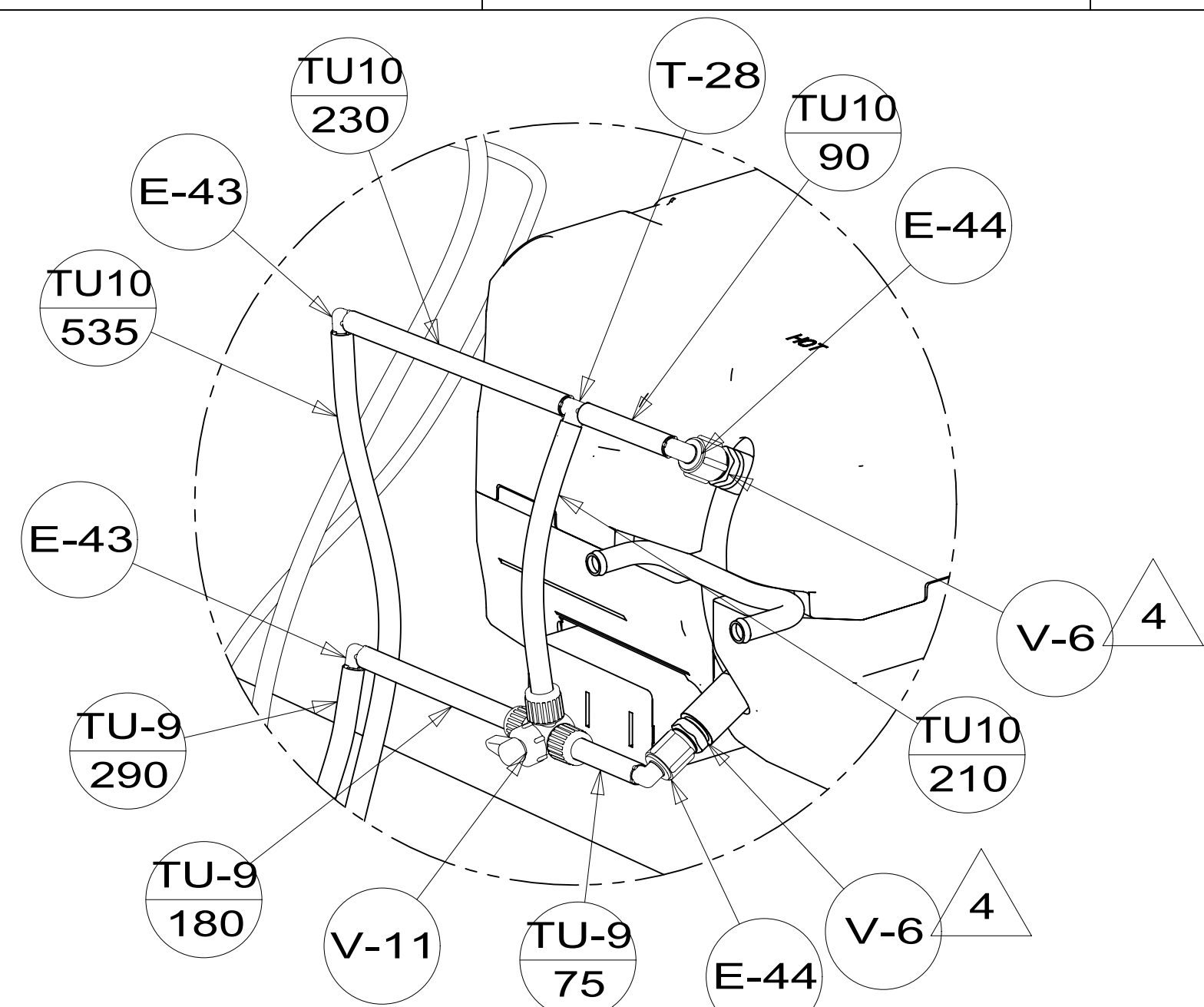
NOTES:

FOR WATER CALLOUTS SEE DWG NO 116230-01-000

**WINNEBAGO** INDUSTRIES, INC. COPYRIGHT 2014

|                             |  |
|-----------------------------|--|
| DFTR                        | ORIG. DATE   |
| CHKR                        | ALL DIMENSIONS ARE IN MILLIMETERS                  |
| P.E.                        |  |
| M.E.                        | FIRST USED   |
| DSNR                        | 15 E30T  |
| UNSPECIFIED TOLERANCES ARE: |  |
| WHOLE DIM (X)               | : 3  |
| ONE-PLACE (X.X)             | : 1.5  |
| TWO-PLACE (X.XX)            | : 0.50   |
| ANGLE                       | : 1°   |
| THIRD ANGLE PROJECTION      |  |
| DO NOT SCALE DRAWING        | REFER TO ES0018 FOR FASTENER TIGHTENING GUIDELINES |
| TITLE: WATER SYSTEM INSTL   |  |
| SHEET 1 OF 3                | PART NO 189393 REV                                 |
| REF:                        | 1 13-Apr-2015                                      |

\*189393\*



|            |                    |             |
|------------|--------------------|-------------|
| FIRST USED | 15 E30T            |             |
| TITLE:     | WATER SYSTEM INSTL |             |
| SHEET 2    | PART NO            | 189393      |
|            | REV                | 1           |
|            |                    | 13-Apr-2015 |

\* 189393 A \*

INSULATION-DRAINAGE COMPT  
120050-51-000

BRACKET-HOLDING TANK  
126796-05-CHT

TANK ASM-WATER,78 GAL  
149269-04-000

BRACKET-ANGLE,W/HOLES  
094756-02-CHT

INSULATION-DRAINAGE COMPT  
120050-54-000

BRACKET-ANGLE,W/HOLES  
094756-02-CHT

DETAIL CC

ONLY SHOWING LINES UNDER FLOOR

PANEL-SERVICE  
150123-27-CHT

PANEL-SERVICE  
150122-07-CHT

CLIP-GRIPPER  
091952-03-000

VIEW CA

BRACKET-PUMP,WATER  
169229-01-CHT  
PANEL-WATER PUMP  
149477-08-CHT  
FOAM-PAD  
140364-01-CHT

CLAMP  
010495-04-000  
RIVET  
113133-03-CHT

VIEW CB

SECTION CE-CE

|                              |                    |
|------------------------------|--------------------|
| FIRST USED                   | 15 E30T            |
| DO NOT SCALE DRAWING         |                    |
| TITLE:<br>WATER SYSTEM INSTL |                    |
| SHEET 3                      | PART NO 189393 REV |

\*189393