

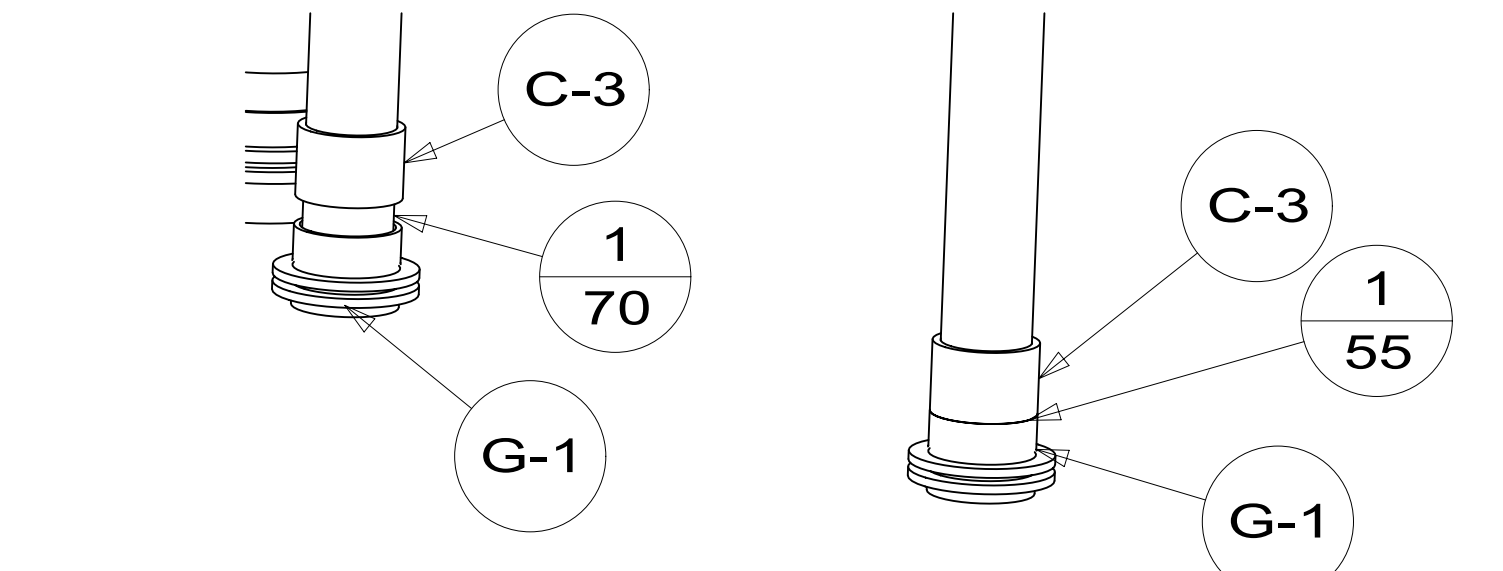
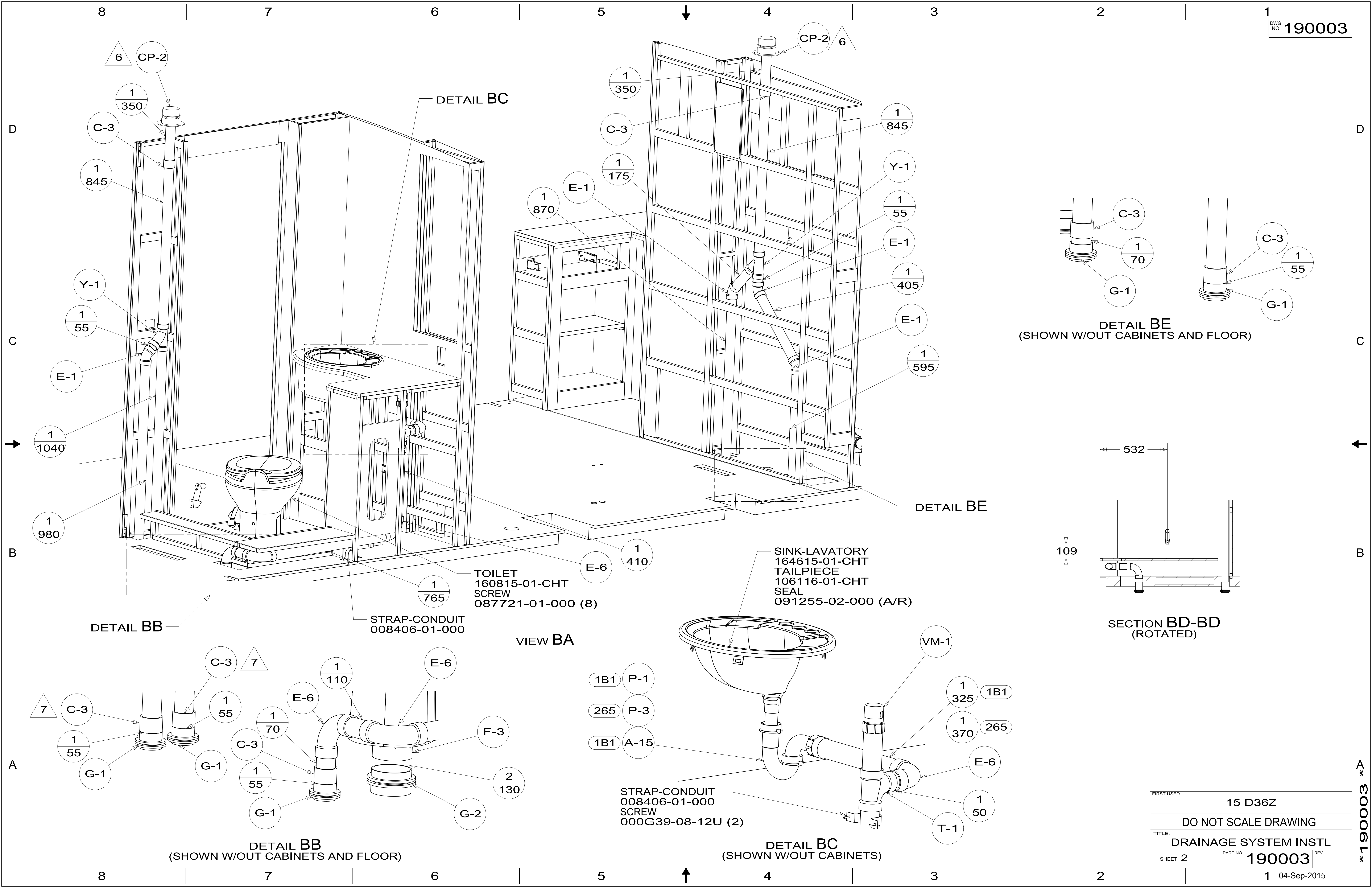
- NOTES:
9. PLACE PLYWOOD UNDER SHOWER AS REQUIRED.
 8. SECURE DRAINAGE PIPES TO CABINET USING WIRE TIE 108046-02-000, AND SCREW 000G67-10-12U AT INTERVALS OF NOT MORE THAN 4 FEET APART.
 7. SECURE VENT PIPE TO FLOOR WITH CLAMP 062401-02-000 (2), SCREW 000G67-10-12U (2), BRACKET 136878-01-CHT (2).
 6. VENT PIPE MUST PROJECT 51 MIN AND 64 MAX ABOVE ROOF FOR PROPER FIT AND FUNCTION. ADD S-1 (116666-01-CHT SEAL-VENT CAP) AROUND PIPE ON ROOF BEFORE VENT CAP IS INSTALLED.
 5. SEAL AROUND SHOWER WITH SILICONE.
 4. GLUE FITTING AFTER CABINET IS INSTALLED.
 3. ALL PIPE AND FITTINGS TO BE ASSEMBLED WITH SOLVENT 004020-01-000 (USA), 004020-02-000 (CAN)
 2. SLOPE OF TRAP ARM MUST BE 6 PER 305 mm.
 1. SLOPE OF HORIZONTAL PIPING TO BE MINIMUM OF 3 PER 305 mm.

- 1B1 CODES/STANDARDS USA
- 265 CODES/STANDARDS-CSA/CMVSS

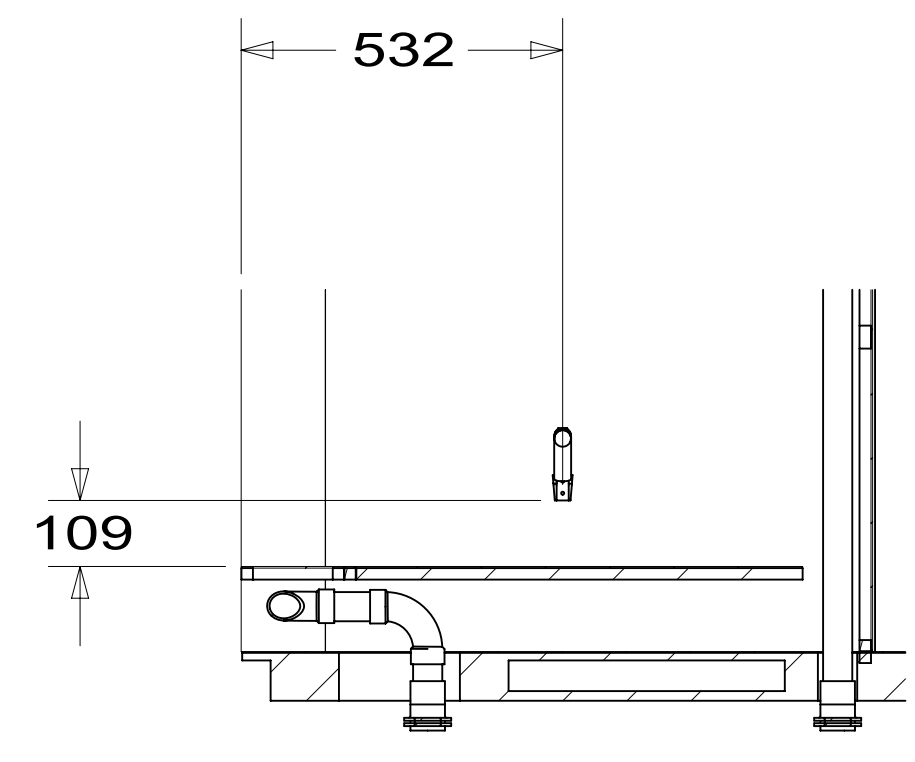
WINNEBAGO		<small>COPYRIGHT 2014 WINNEBAGO INDUSTRIES, INC.</small>	
DFT-ORIG	ORIG. DATE	15 D36Z	
CHKR	ALL DIMENSIONS ARE IN MILLIMETERS		
P.E.	FIRST USED		
M.E.			
DSNR			
UNSPECIFIED TOLERANCES ARE:		MATERIAL:	
WHOLE DIM (X)	: 3		
ONE-PLACE (X.X)	:		
TWO-PLACE (X.XX)	:		
ANGLE	:		
THIRD ANGLE PROJECTION			
DO NOT SCALE DRAWING		REFER TO ES0018 FOR FASTENER TIGHTENING GUIDELINES	
TITLE: DRAINAGE SYSTEM INSTL			
SHEET 1 OF 4	PART NO	190003	REV
REF:	1 04-Sep-2015		

FOR
DRAINAGE
CALLOUTS
SEE DWG NO
116229-01-000

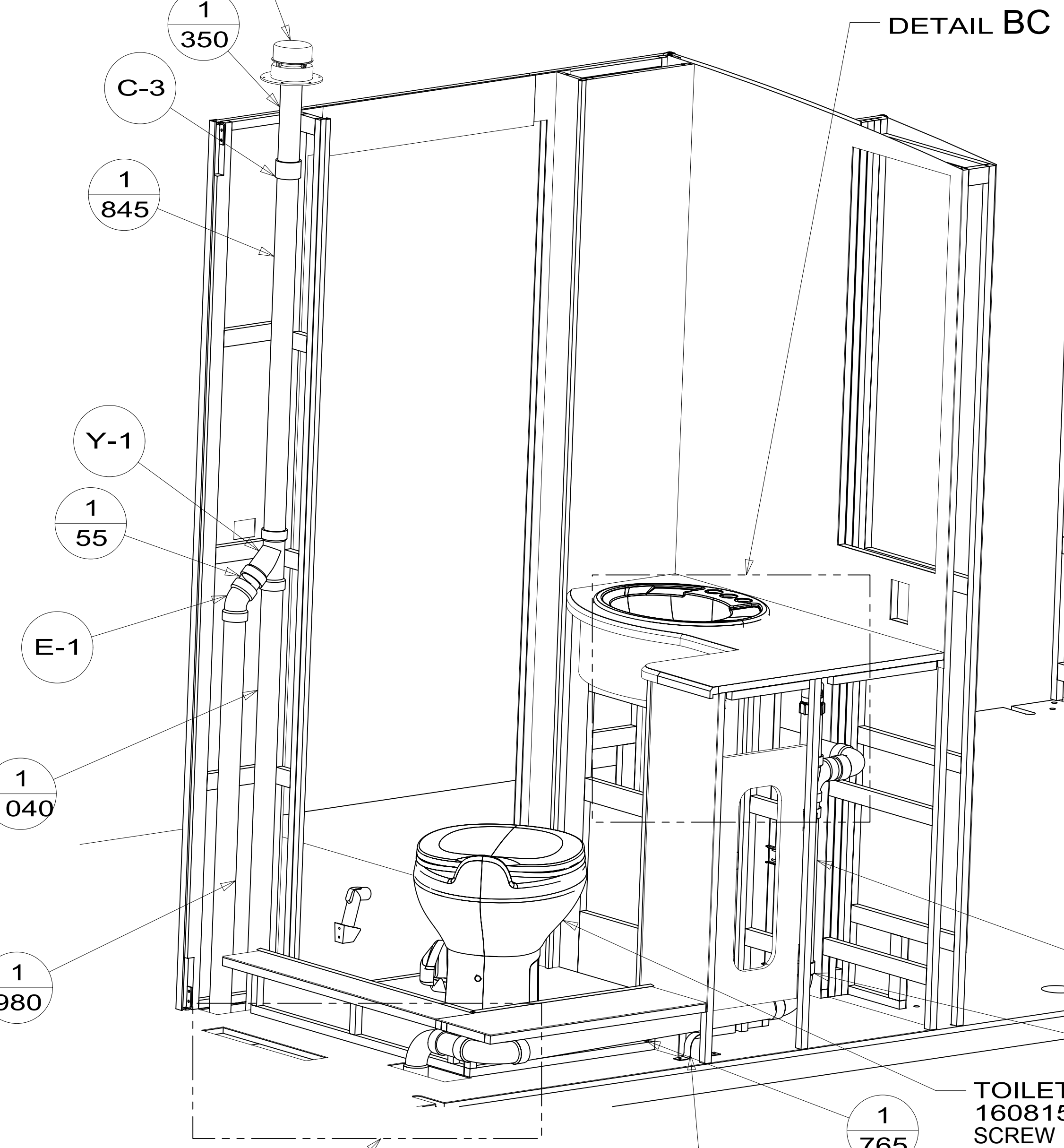
190003



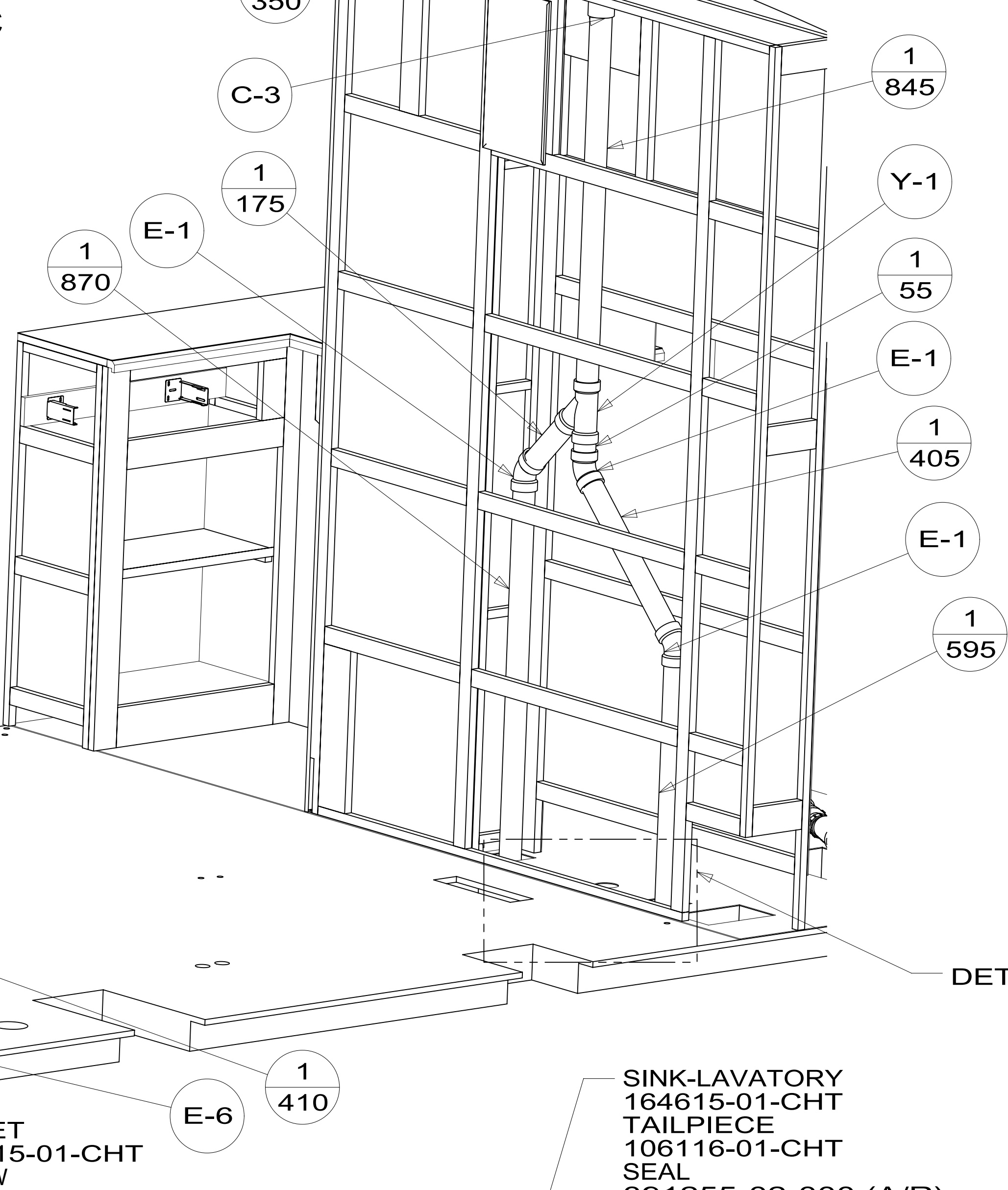
DETAIL BE
(SHOWN W/OUT CABINETS AND FLOOR)



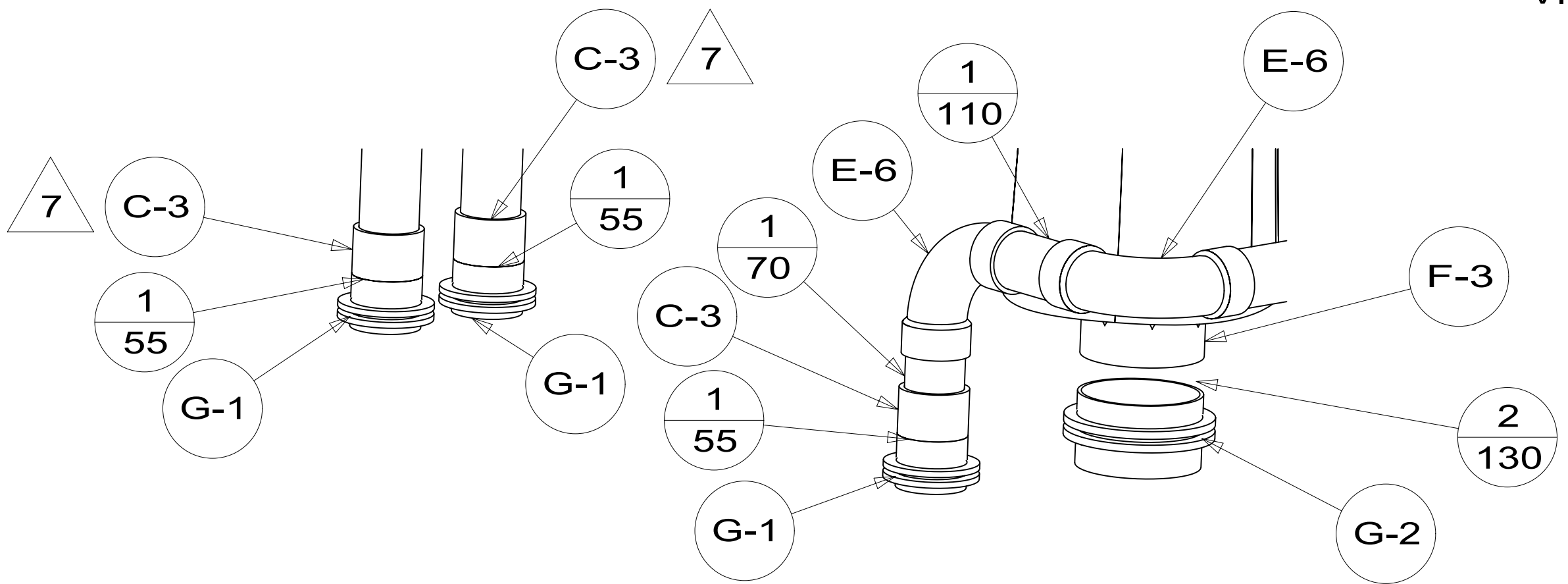
SECTION BD-BD
(ROTATED)



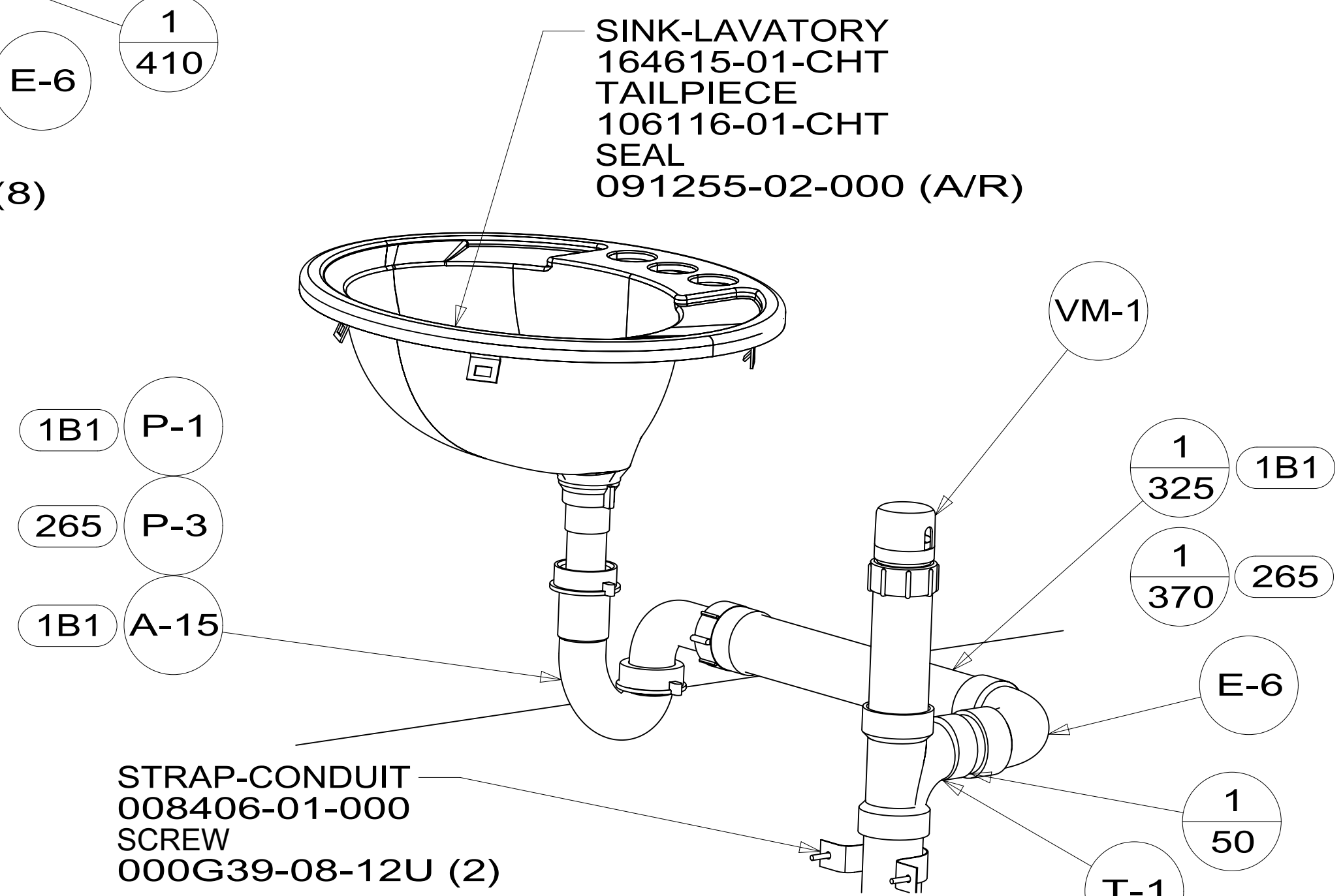
DETAIL BB
(SHOWN W/OUT CABINETS AND FLOOR)



DETAIL BC
(SHOWN W/OUT CABINETS)



DETAIL BB
(SHOWN W/OUT CABINETS AND FLOOR)



DETAIL BC
(SHOWN W/OUT CABINETS)

TOILET
160815-01-CHT
SCREW
087721-01-000 (8)

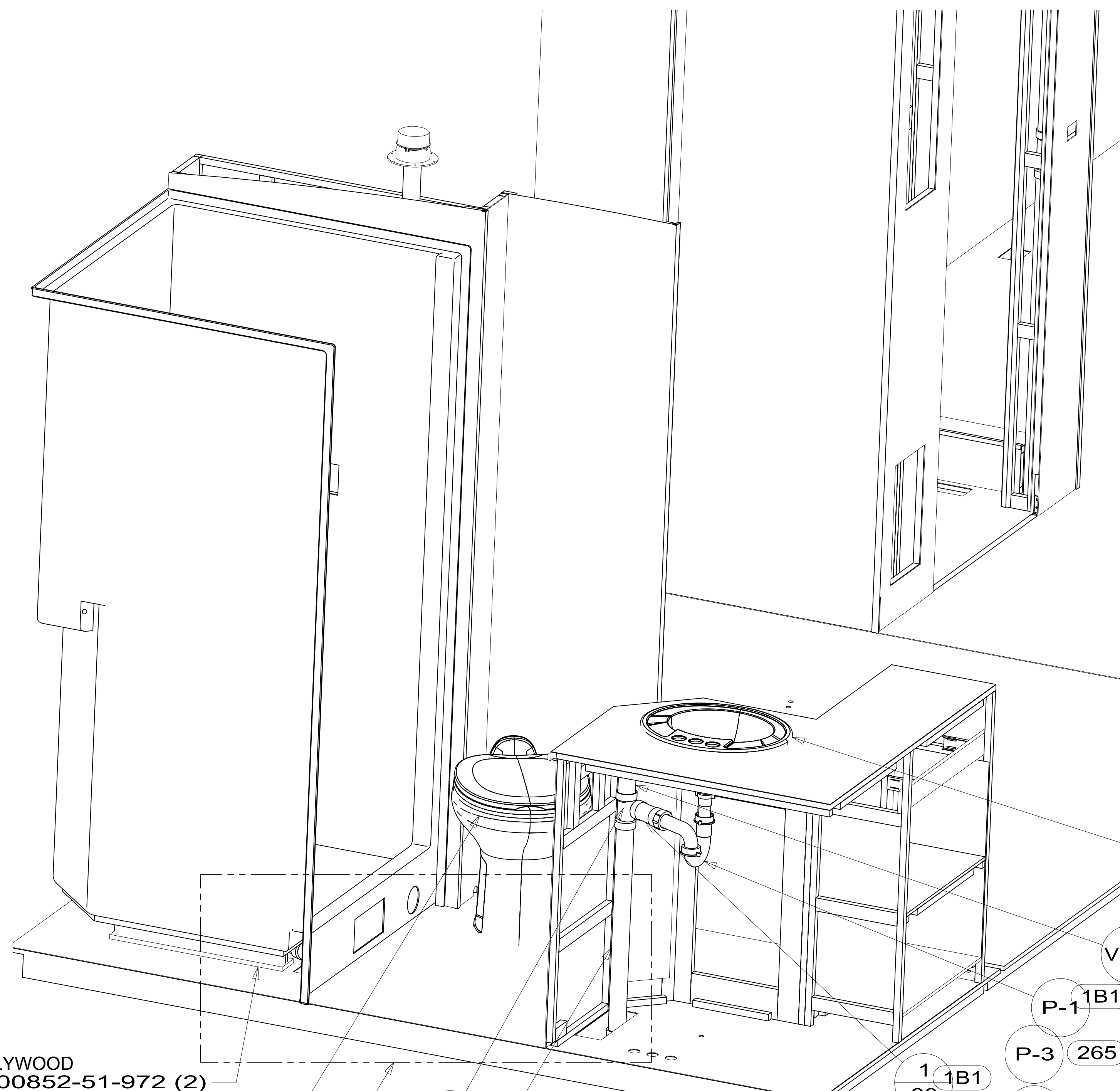
SINK-LAVATORY
164615-01-CHT
TAILPIECE
106116-01-CHT
SEAL
091255-02-000 (A/R)

STRAP-CONDUIT
008406-01-000

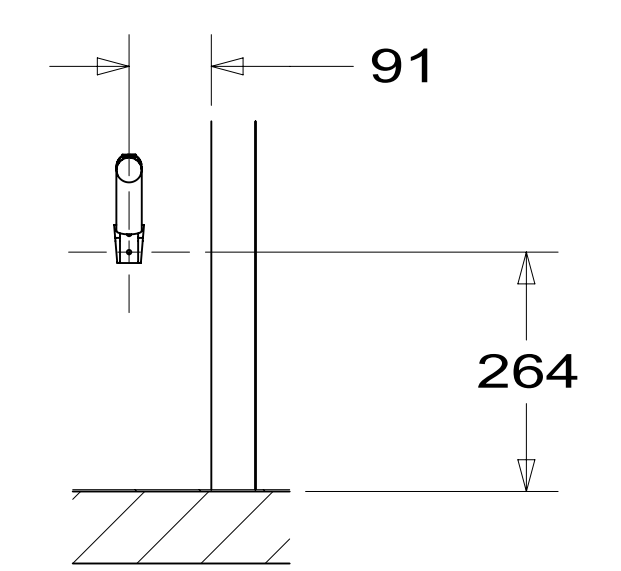
STRAP-CONDUIT
008406-01-000
SCREW
000G39-08-12U (2)

FIRST USED	15 D36Z
TITLE:	DO NOT SCALE DRAWING
DRAINAGE SYSTEM INSTL	
SHEET 2	PART NO 190003 REV
1 04-Sep-2015	

*190003



VIEW CA



SECTION CD-CD (ROTATED)

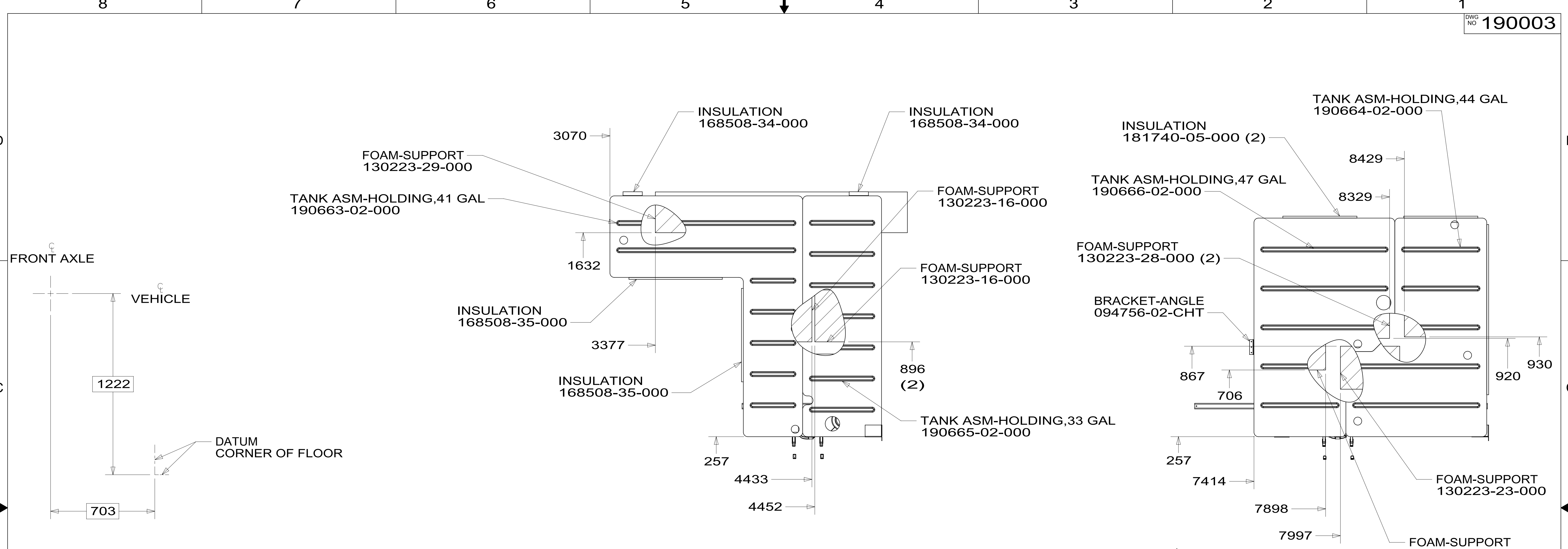
DETAIL CB

DETAIL CB (SHOWN W/OUT CABINETS AND FLOOR)

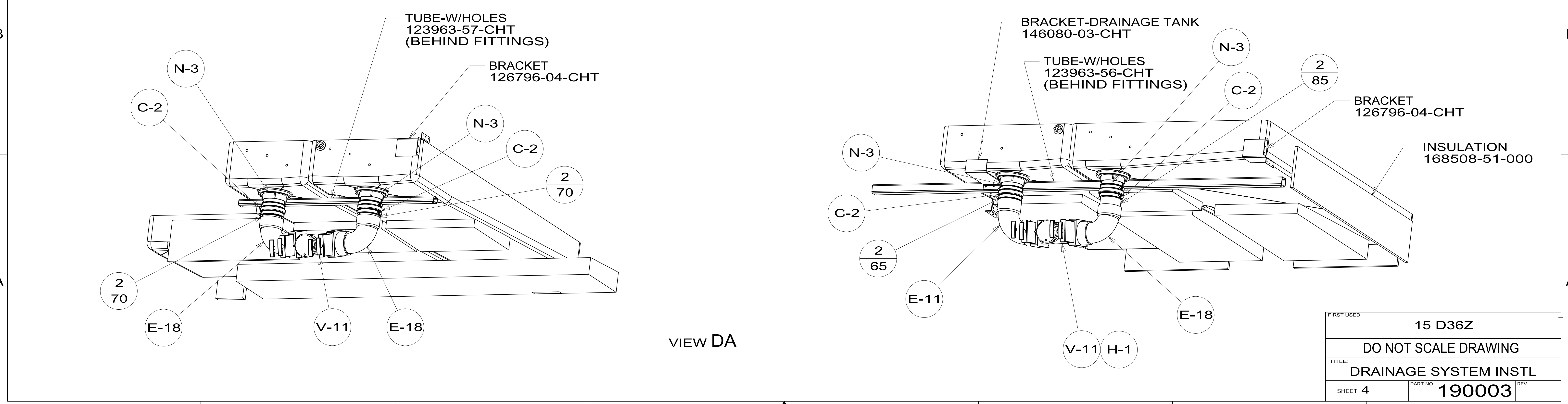
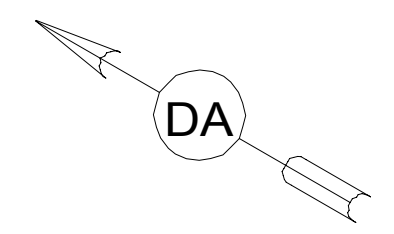
DETAIL CC (SHOWN W/OUT CABINETS AND FLOOR)

FIRST USED	15 D36Z
TITLE:	DO NOT SCALE DRAWING
DRAINAGE SYSTEM INSTL	
SHEET 3	PART NO 190003 REV
1 04-Sep-2015	

*190003



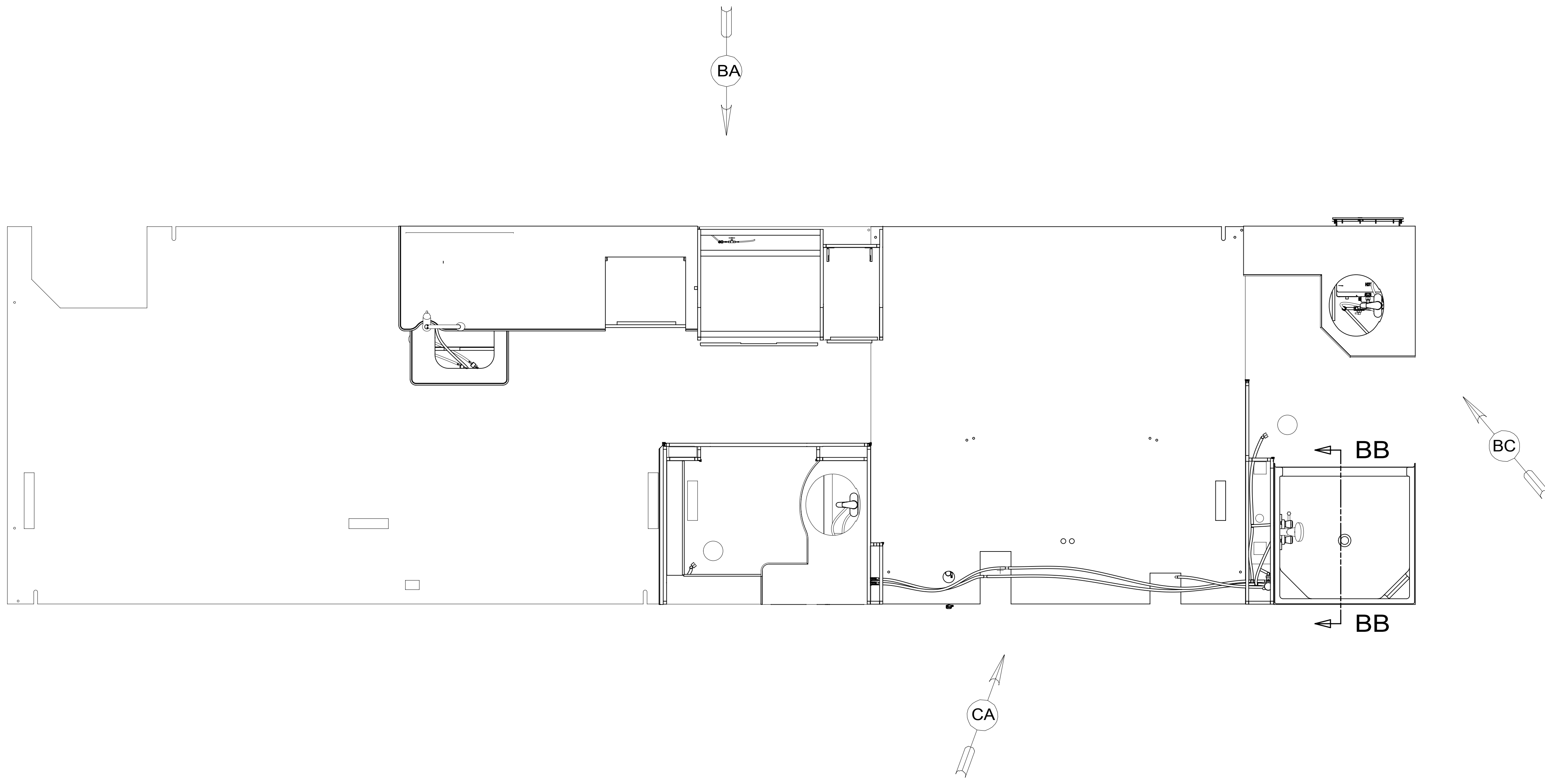
SHOWING TANKS AND DRAINS



VIEW DA

FIRST USED	15 D36Z	
DO NOT SCALE DRAWING		
TITLE: DRAINAGE SYSTEM INSTL		
SHEET 4	PART NO 190003	REV
1 04-Sep-2015		

190003 A



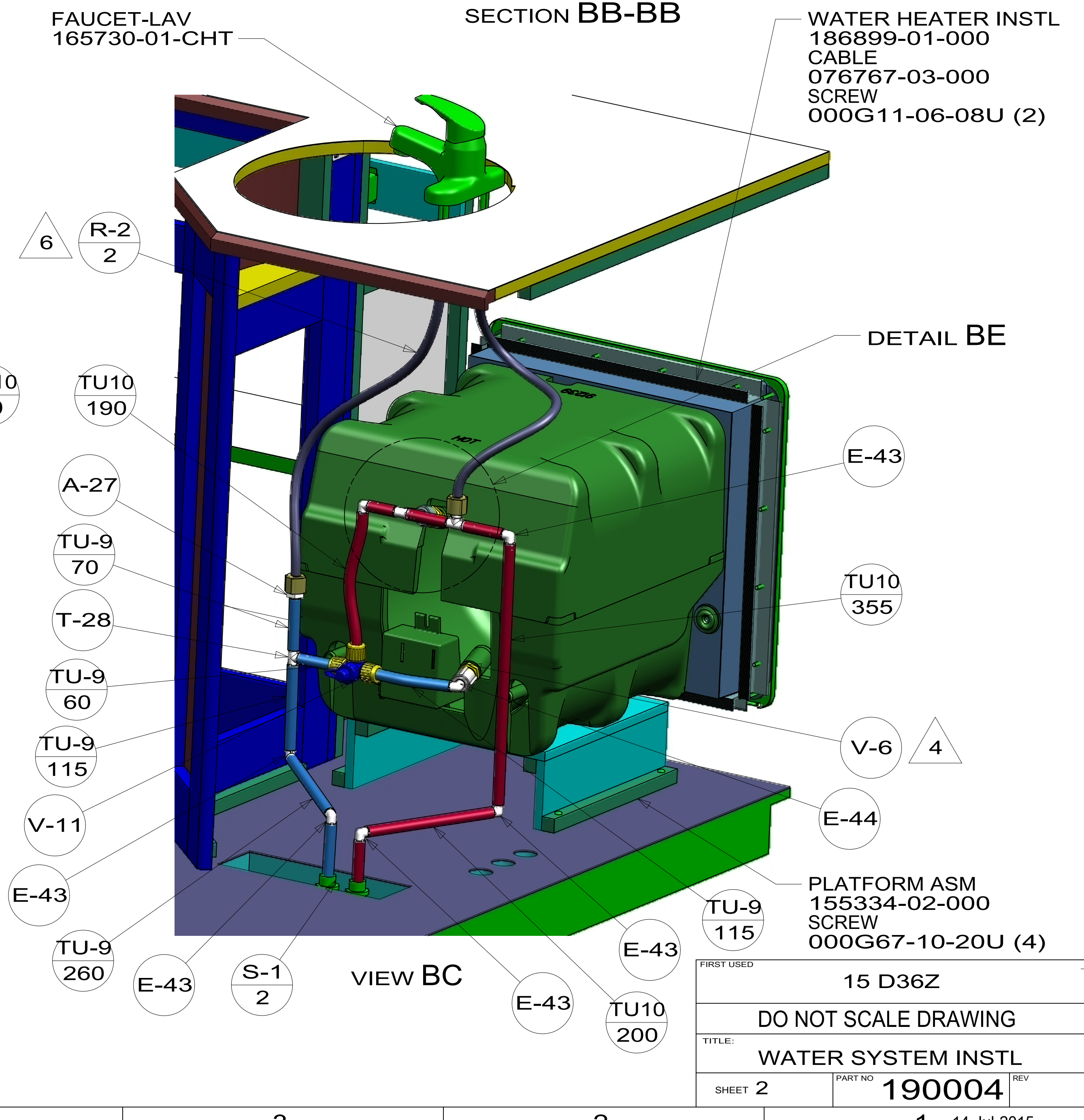
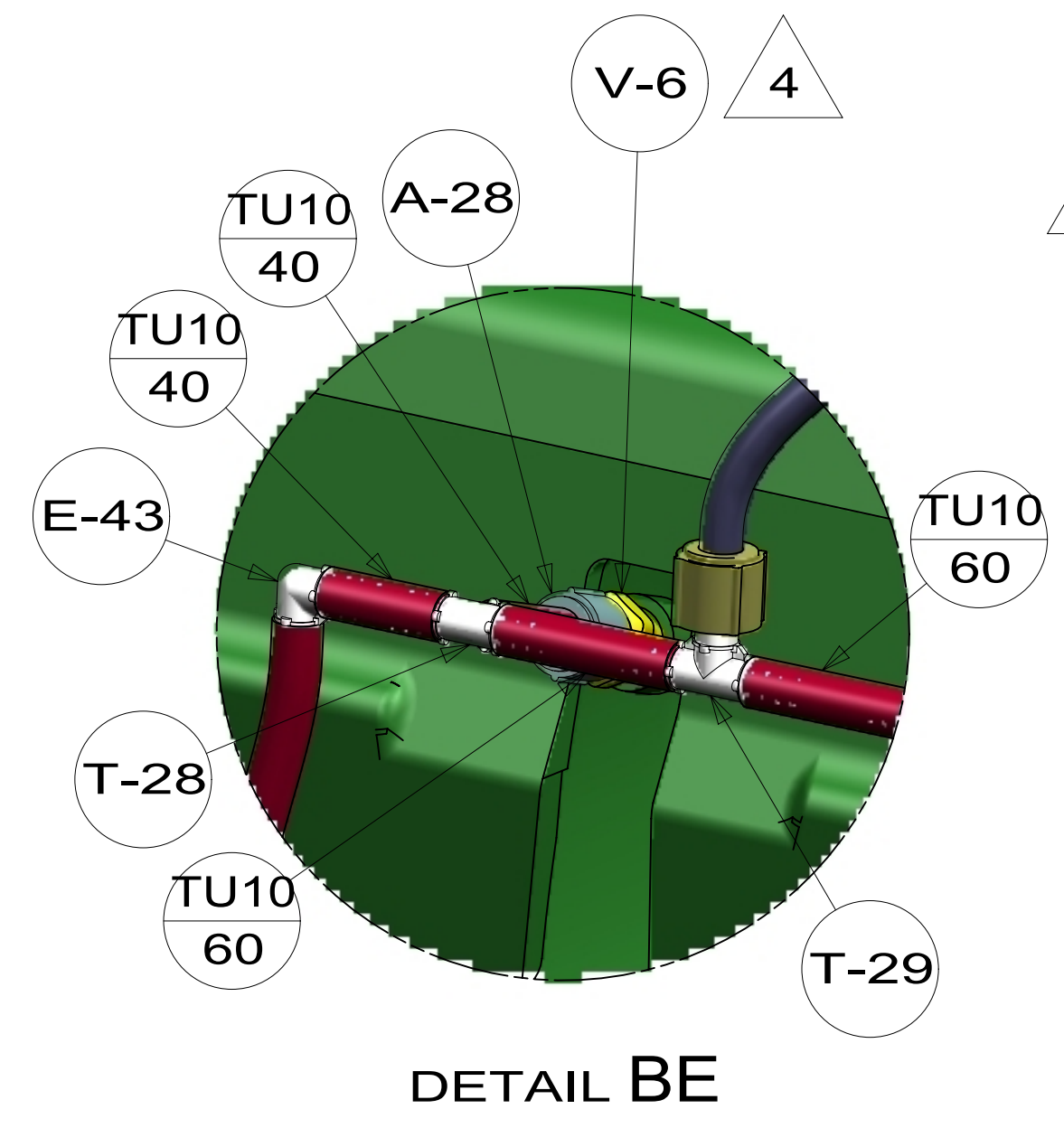
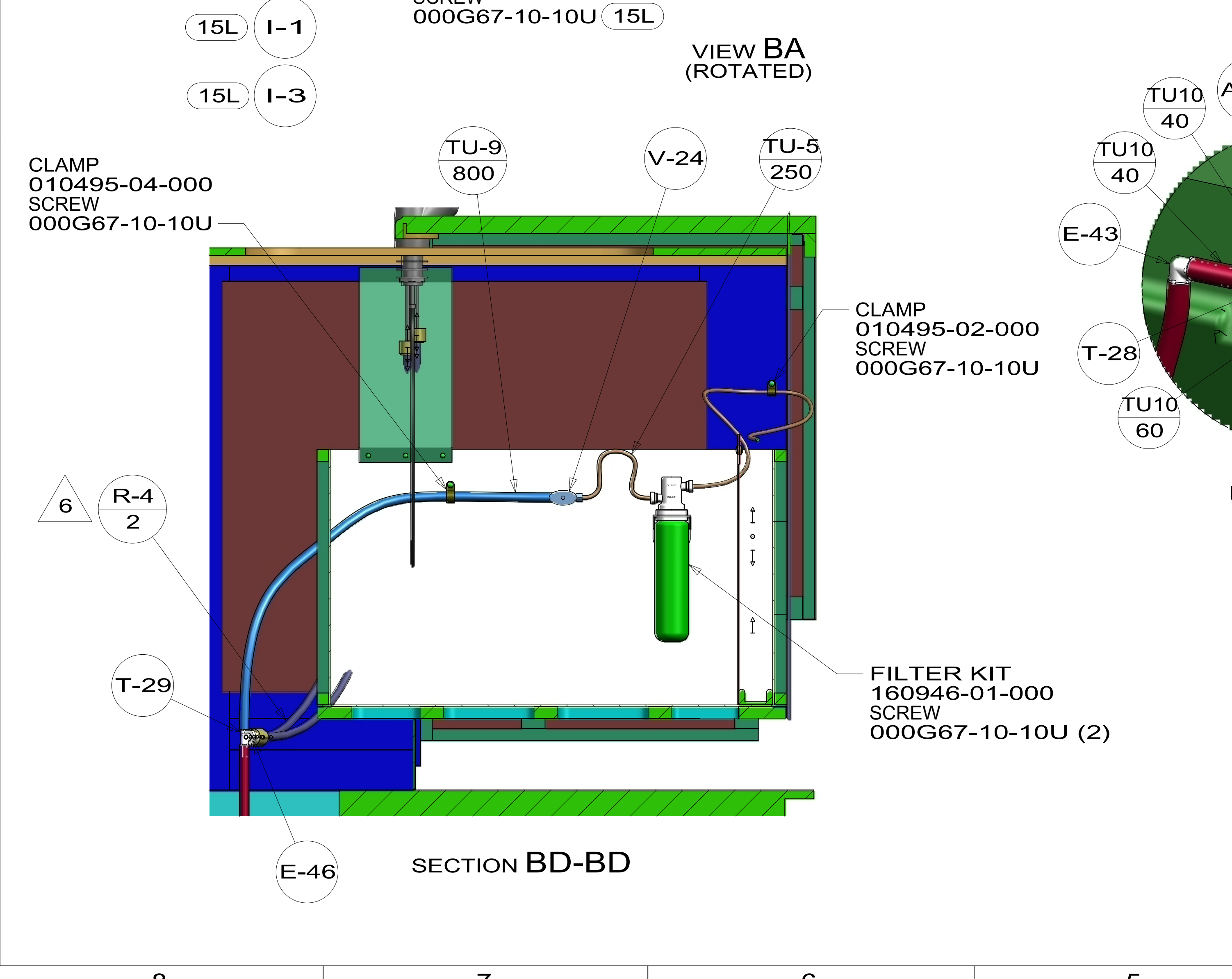
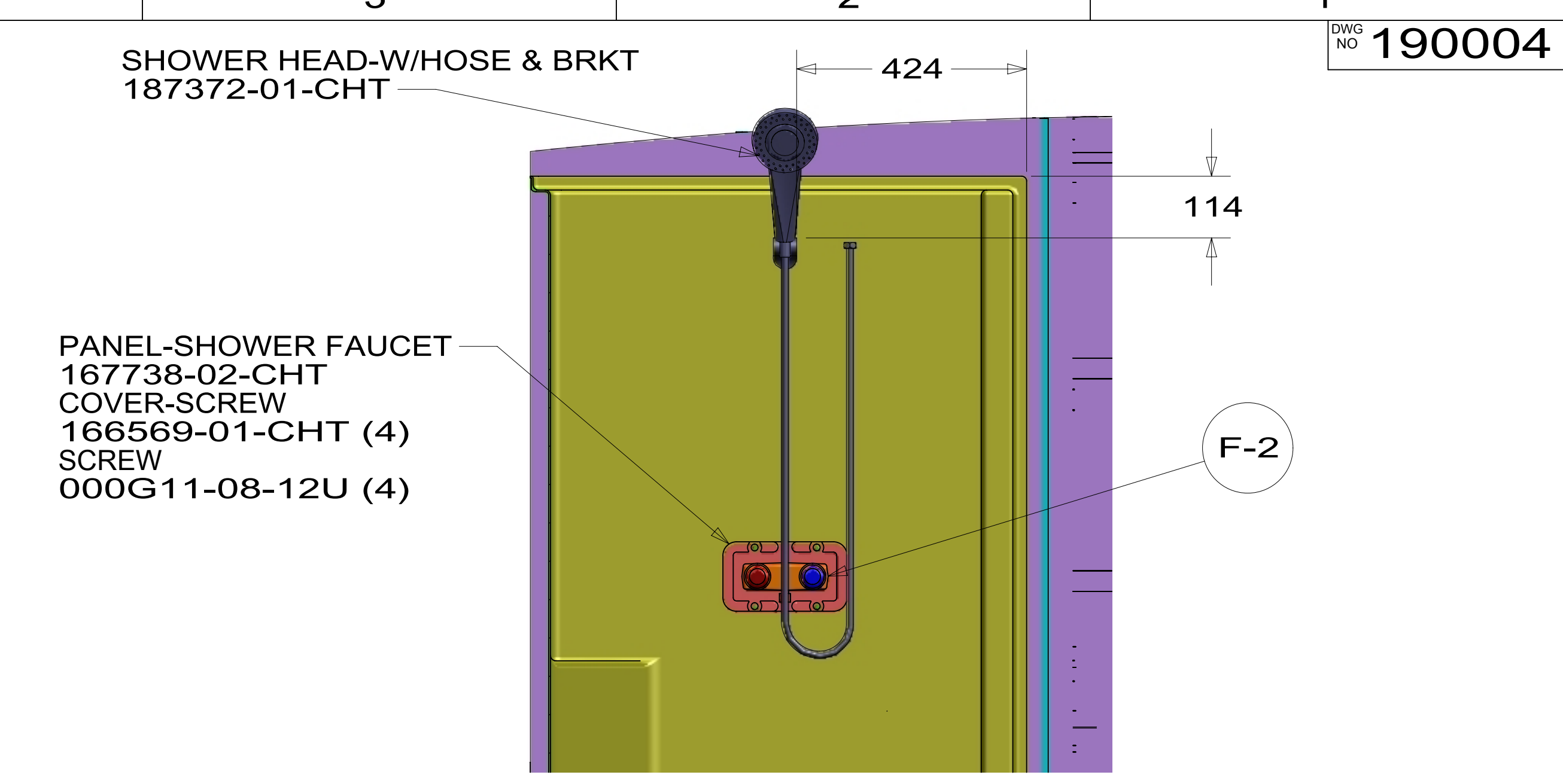
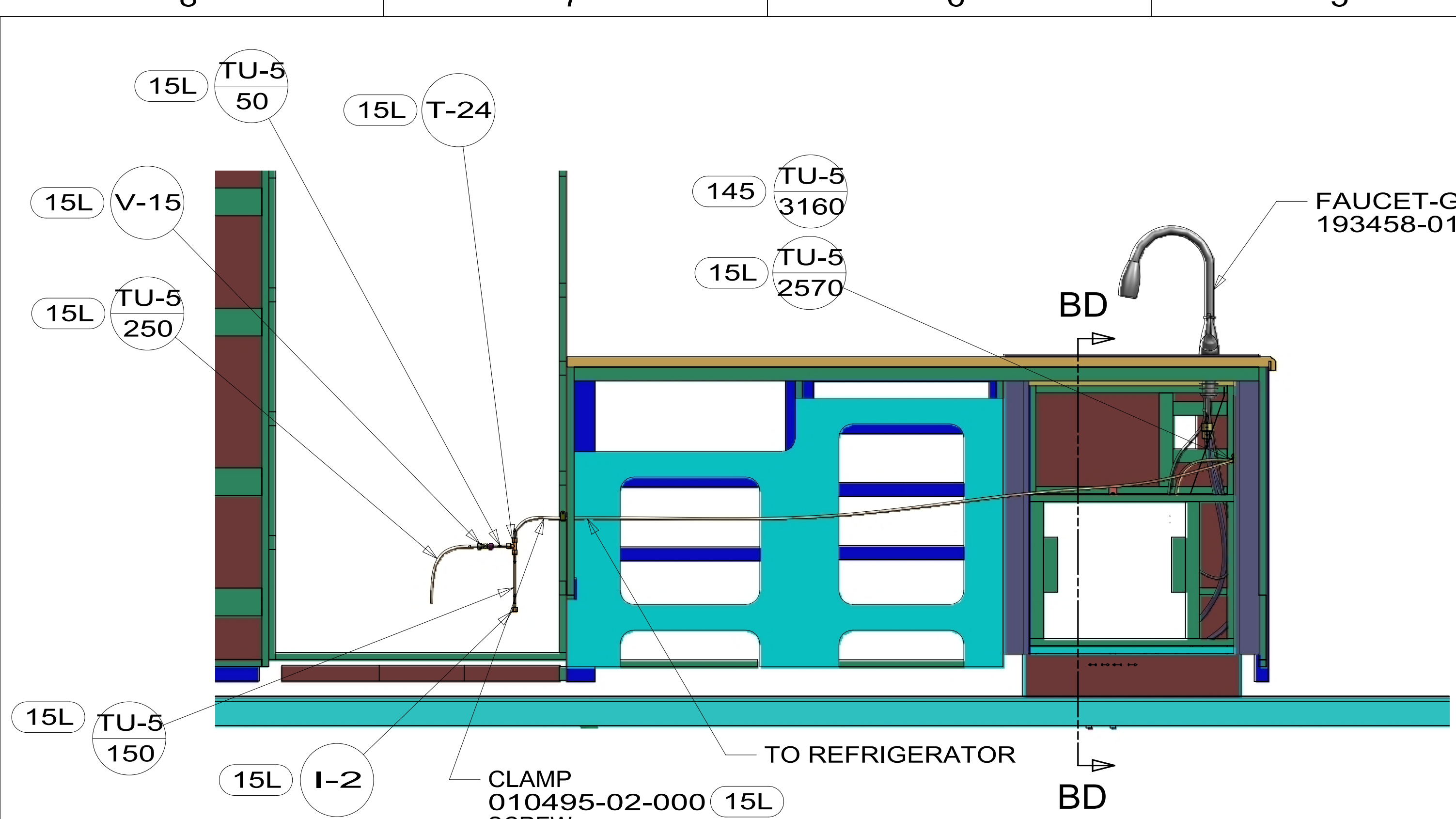
- 10 SEAL VENT HOLE IN DOOR W/SILICONE SEALANT.
- 9. ALL CRIMP FITTINGS TO 3/4" PEX TUBING REQUIRE 3/4" CLAMP 140171-05-000.
- 8. ALL CRIMP FITTINGS TO 1/2" PEX TUBING REQUIRE 1/2" CLAMP 140171-03-000.
- 7. ALL CRIMP FITTINGS TO 5/8" FLEX TUBING REQUIRE 5/8" CLAMP 140171-04-000.
- 6 LABEL HOT AND COLD SUPPLY TUBES AND TAPE FITTING TO TUBE BEFORE CABINET SET TO PREVENT MOVEMENT.
- 5 ADD PIPE WRAP (LADDER SCRAP 110157-02-000) INSULATION.
- 4 ADD TEFLON TAPE 010405-02-000.
- 3. ALL TUBING TO BE SECURED AT 1200 INTERVALS MAXIMUM WITH CLAMP 010495-01-000 AND SCREW 000G67-10-12U OR EQUIVALENT.
- 2. TUBING TO BE INSTALLED WITH SUFFICIENT SLOPE TO PROVIDE DRAINAGE TO NEAREST VALVE.
- 1. PLASTIC FITTINGS TO BE SEALED WITH SEALANT 084456-01-000.

- 145 REFR-EXTRA CAP W/ICEMAKER
- 15L RESIDENTIAL REFRIGERATOR PKG

		COPYRIGHT 2014 WINNEBAGO INDUSTRIES, INC.
DFTR	ORIG. DATE	
CHKR	ALL DIMENSIONS ARE IN MILLIMETERS	
P.E.		
M.E.	FIRST USED	
DSNR	15 D36Z	
UNSPECIFIED TOLERANCES ARE:		
WHOLE DIM (X)	: 3	
ONE-PLACE (X.X)	:	
TWO-PLACE (X.XX)	:	
ANGLE	:	
THIRD ANGLE PROJECTION		
DO NOT SCALE DRAWING	REFER TO ES0018 FOR FASTENER TIGHTENING GUIDELINES	
TITLE: WATER SYSTEM INSTL		
SHEET 1 OF 5	PART NO 190004	REV
REF:	1	14-Jul-2015

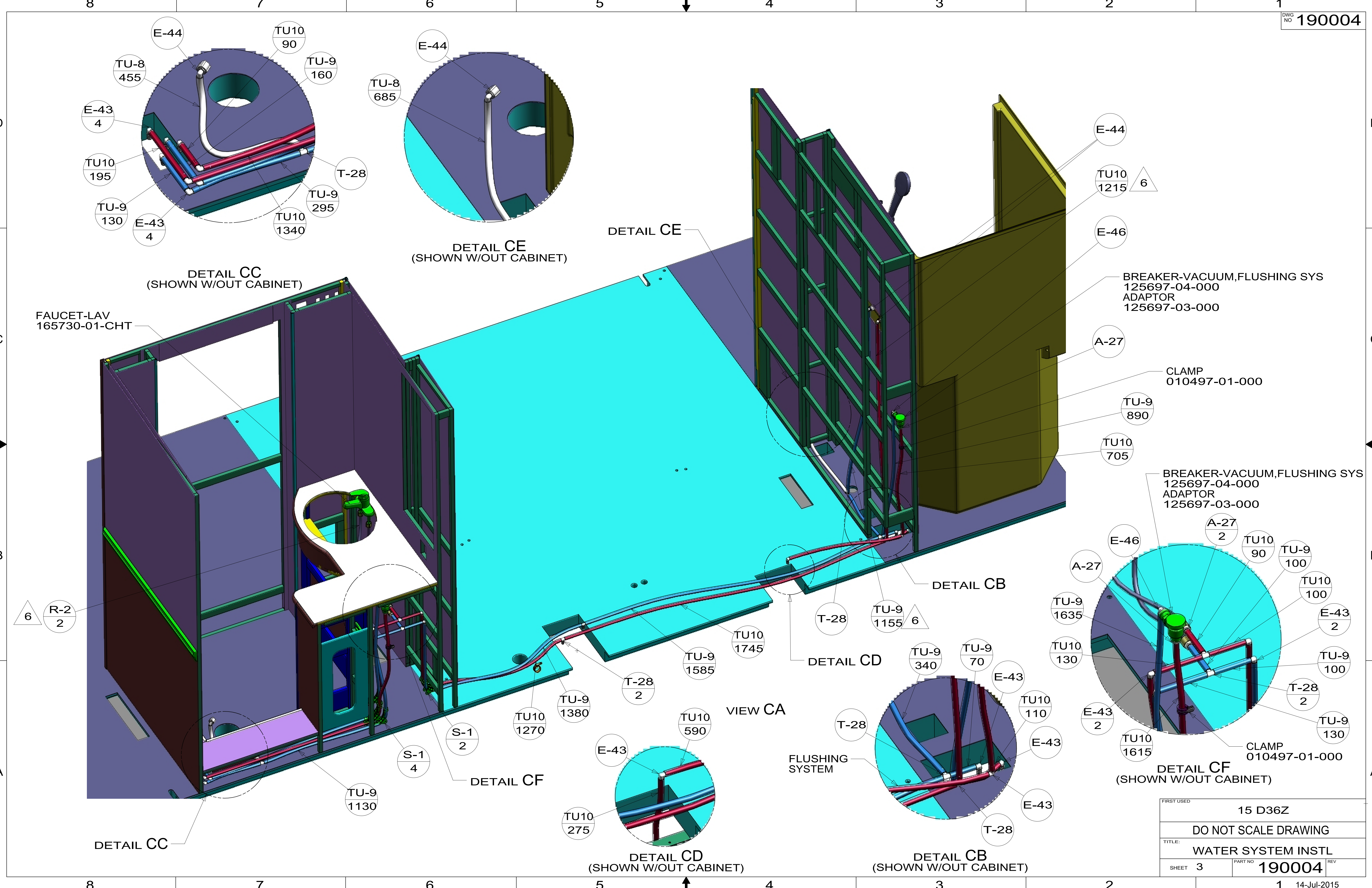
FOR WATER CALLOUTS SEE DWG NO 116230-01-000

190004



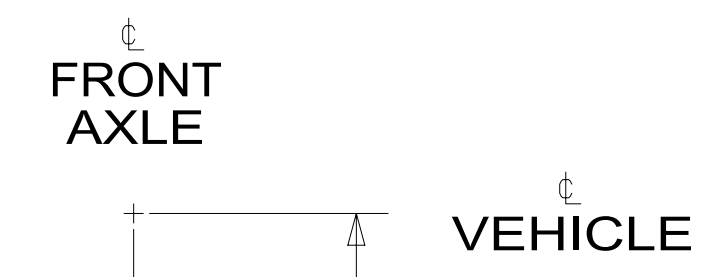
FIRST USED	15 D36Z
DO NOT SCALE DRAWING	
TITLE: WATER SYSTEM INSTL	
SHEET 2	PART NO 190004 REV
14-Jul-2015	

190004

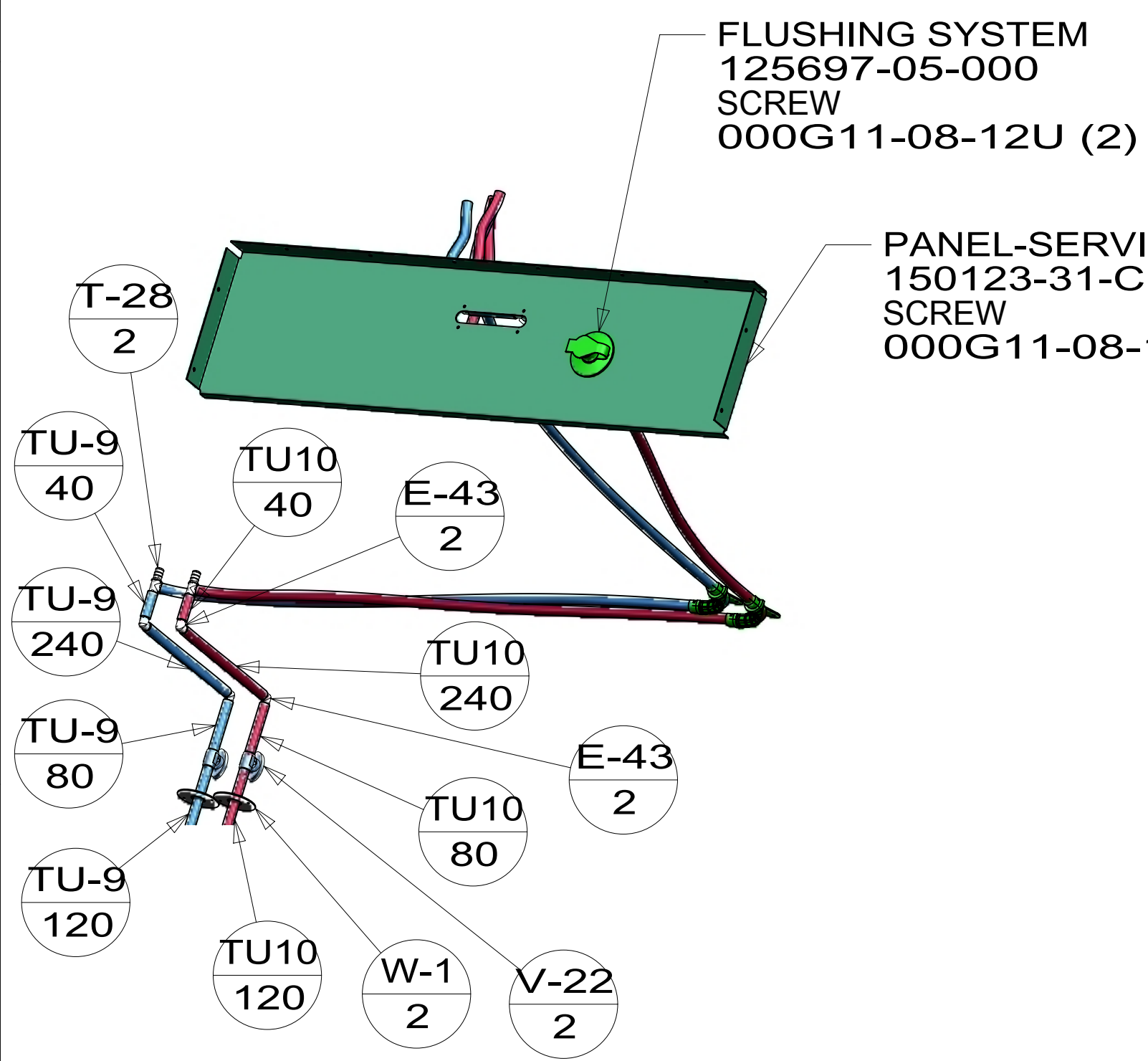
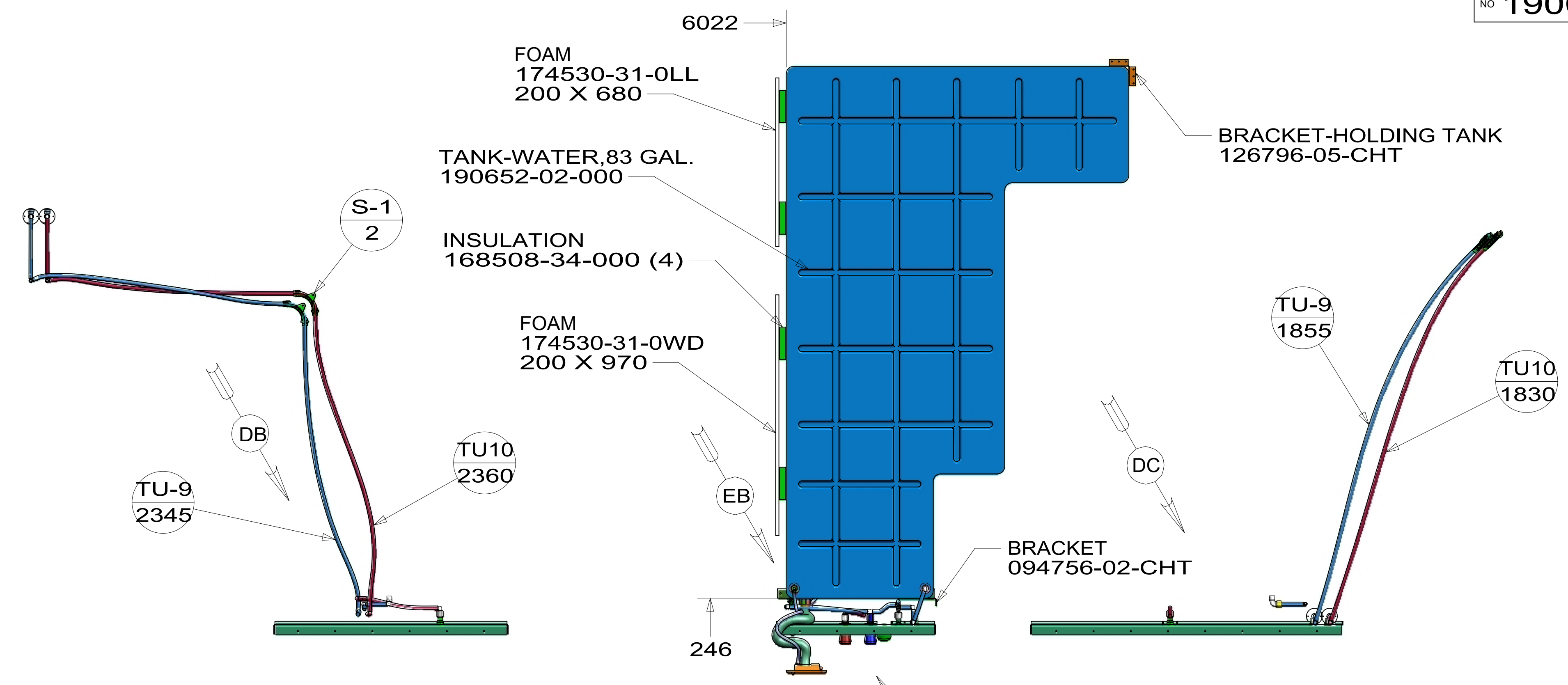


FIRST USED	15 D36Z	
TITLE:	DO NOT SCALE DRAWING	
SHEET	3	PART NO 190004
		REV 14-Jul-2015

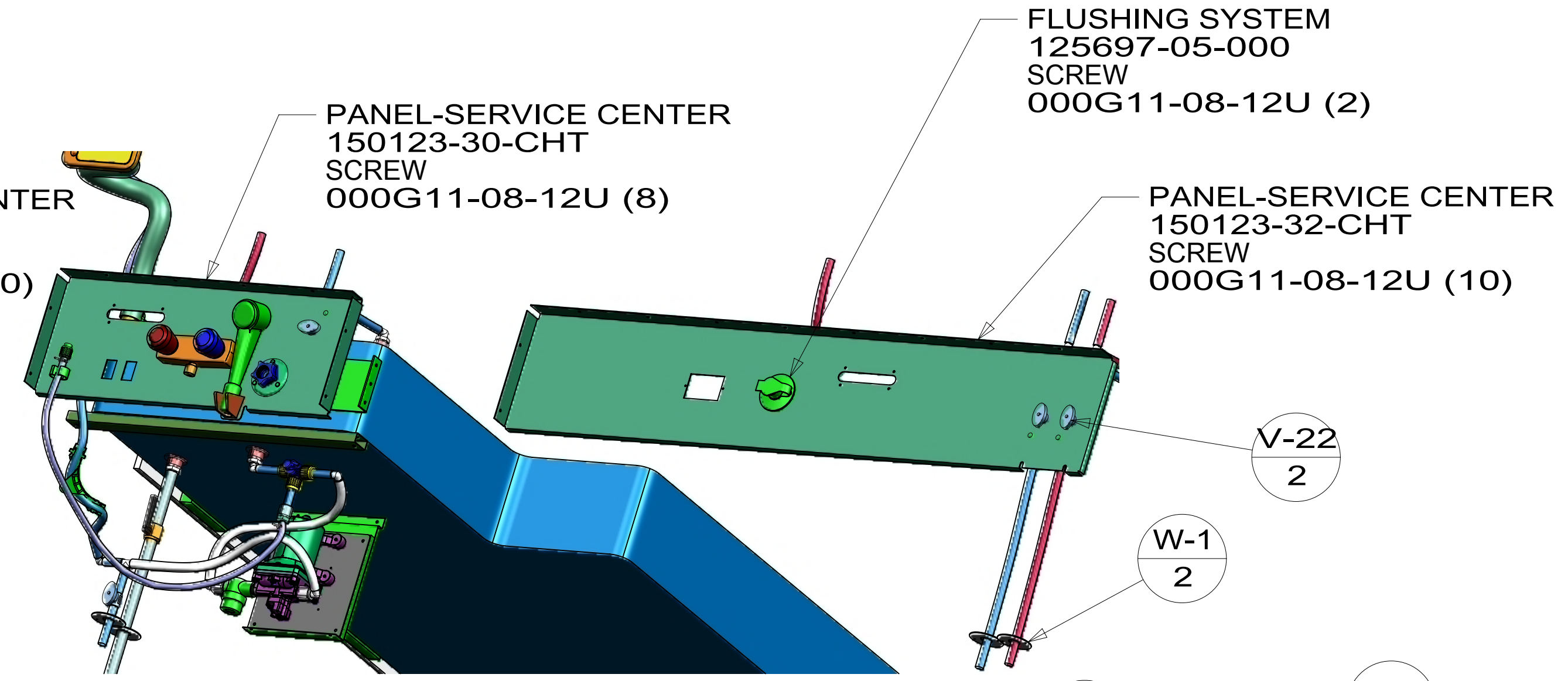
190004



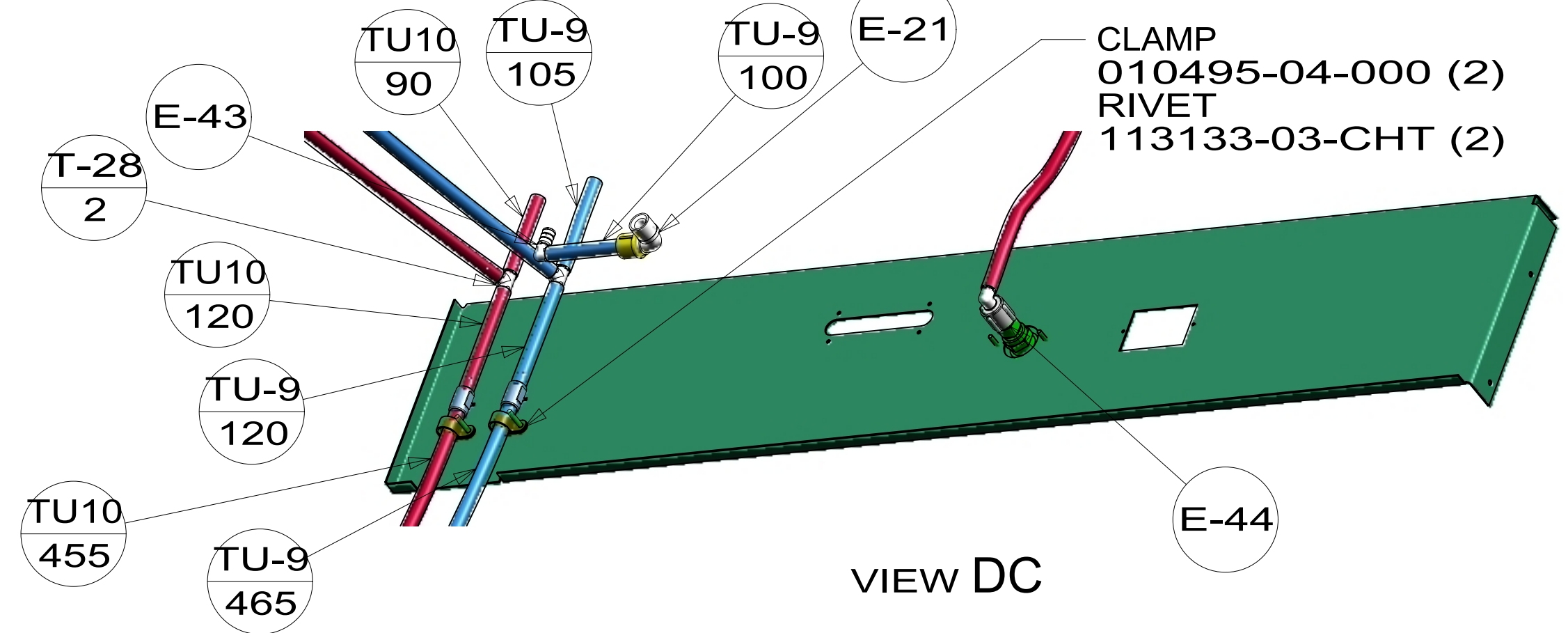
SHOWING TOP VIEW COMPTS UNDER FLOOR



VIEW DA



VIEW DB



VIEW DC

FIRST USED	15 D36Z
TITLE:	DO NOT SCALE DRAWING
SHEET 4	PART NO 190004
REV	14-Jul-2015

190004

