

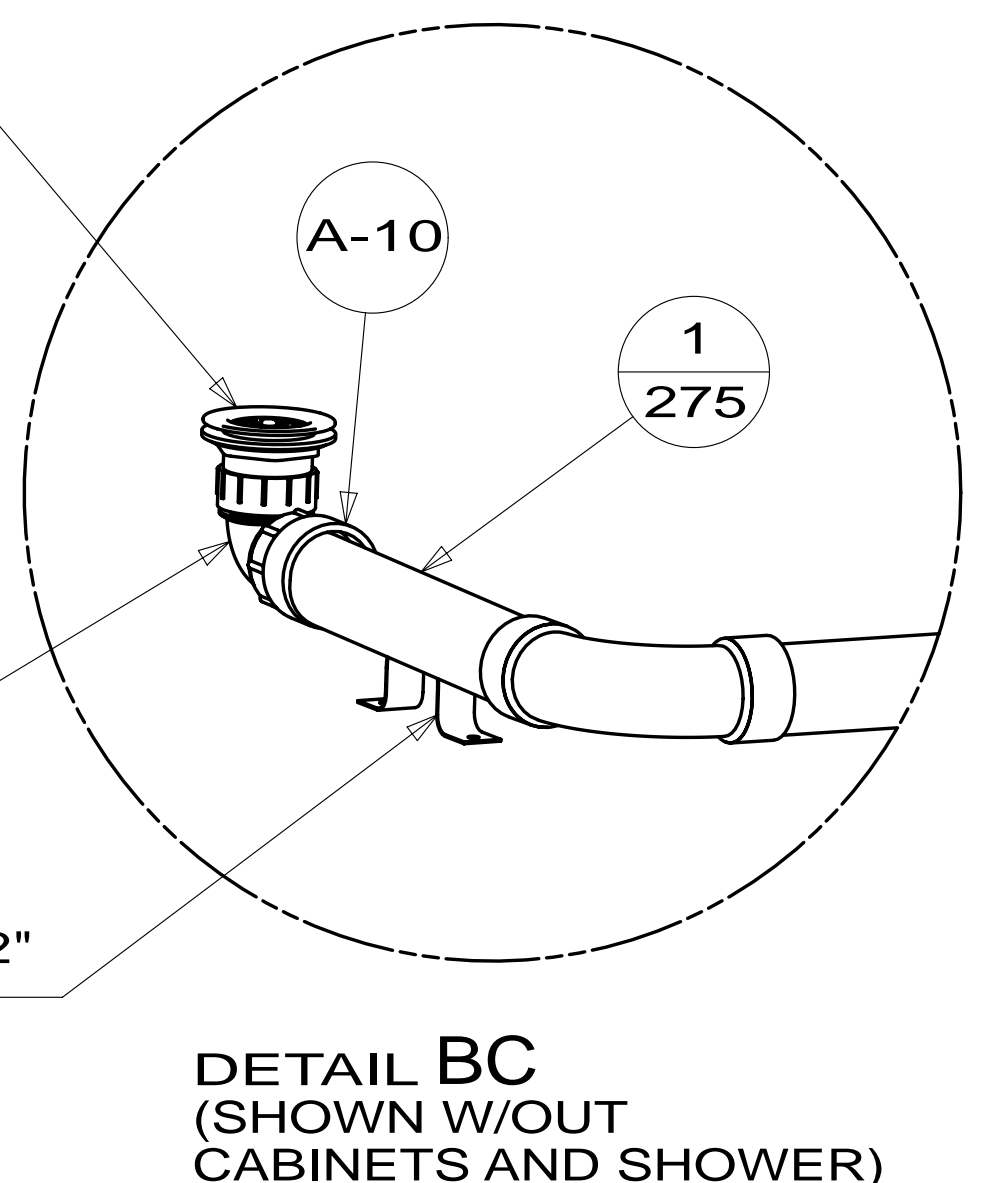
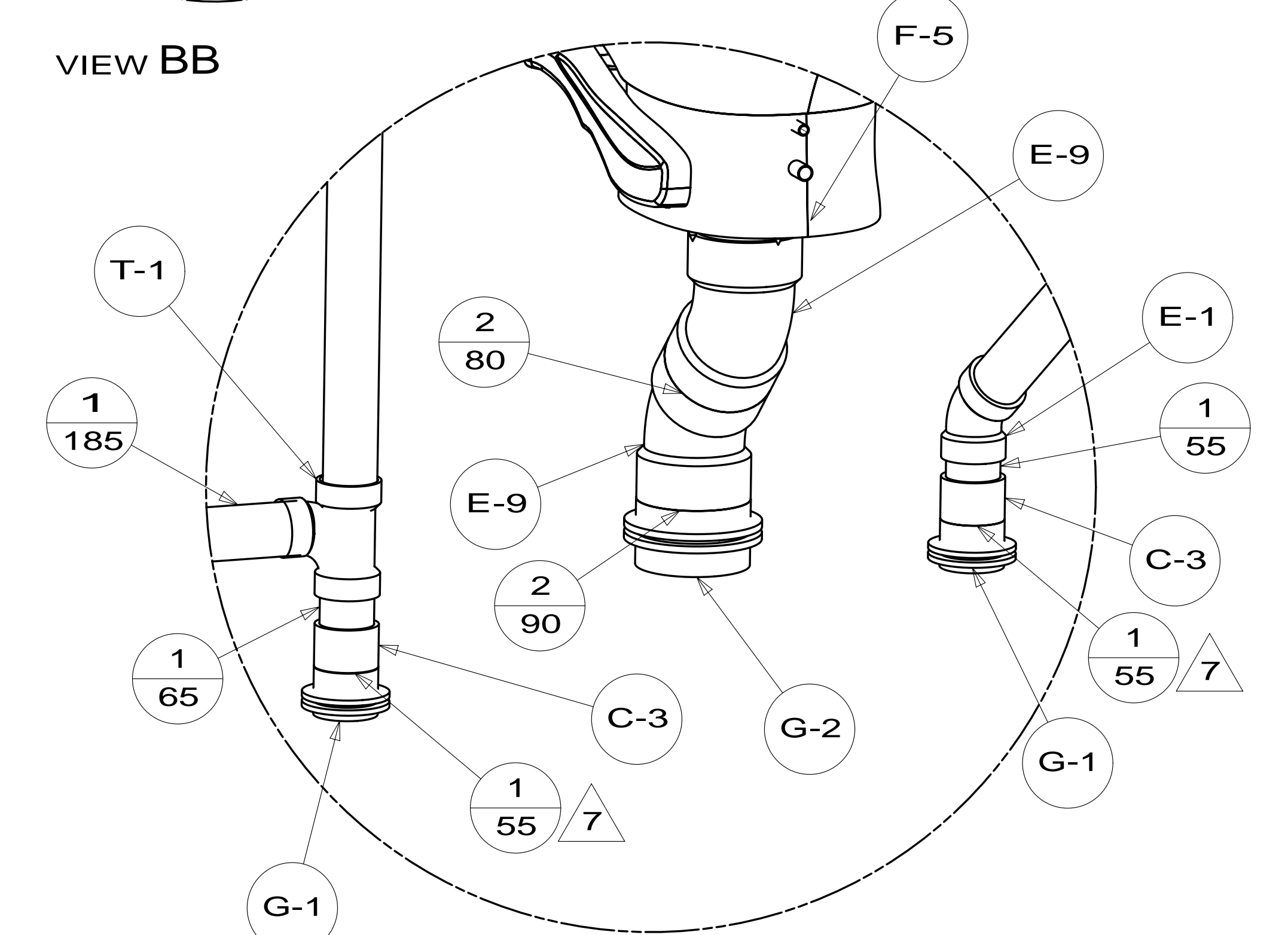
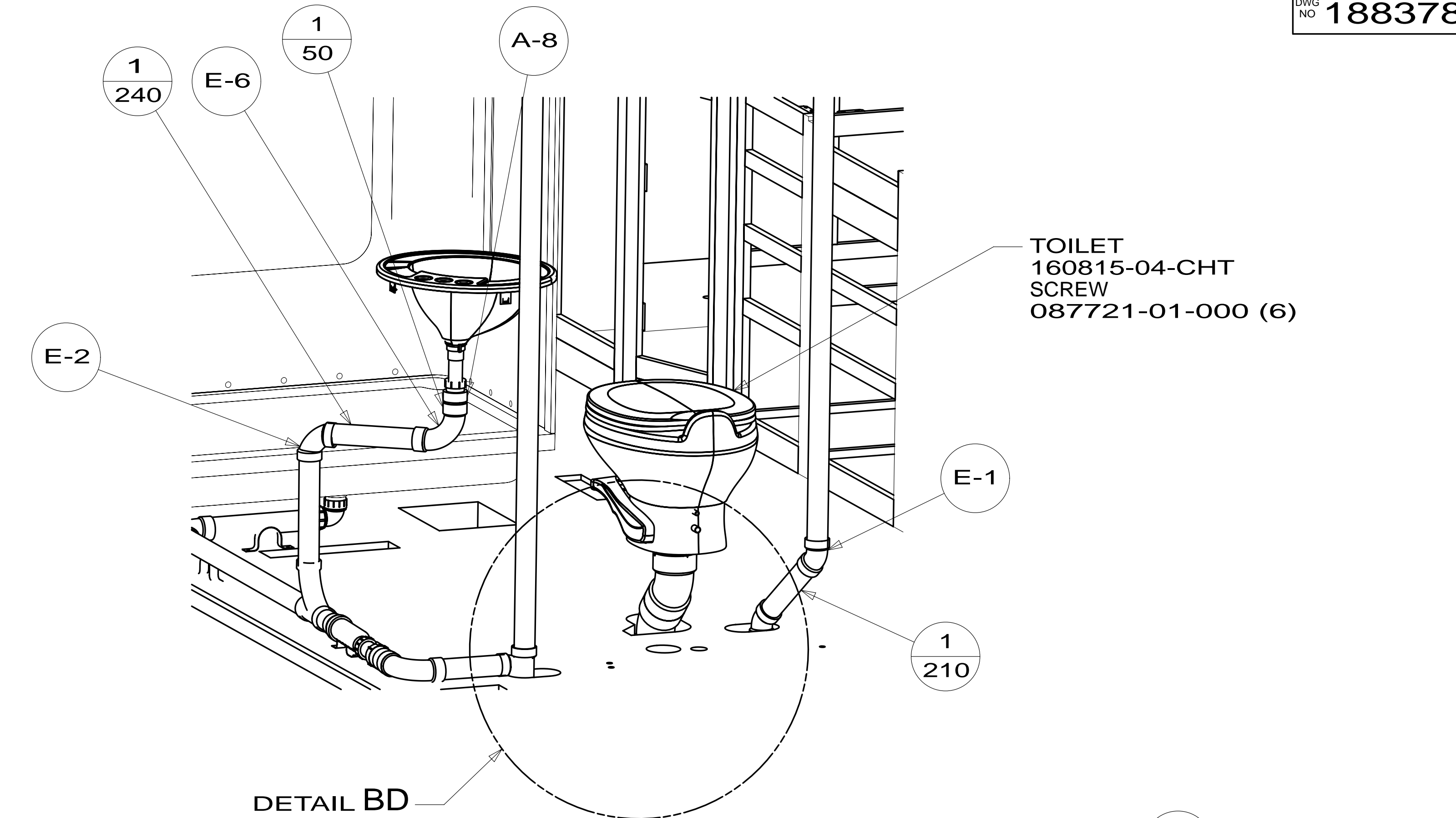
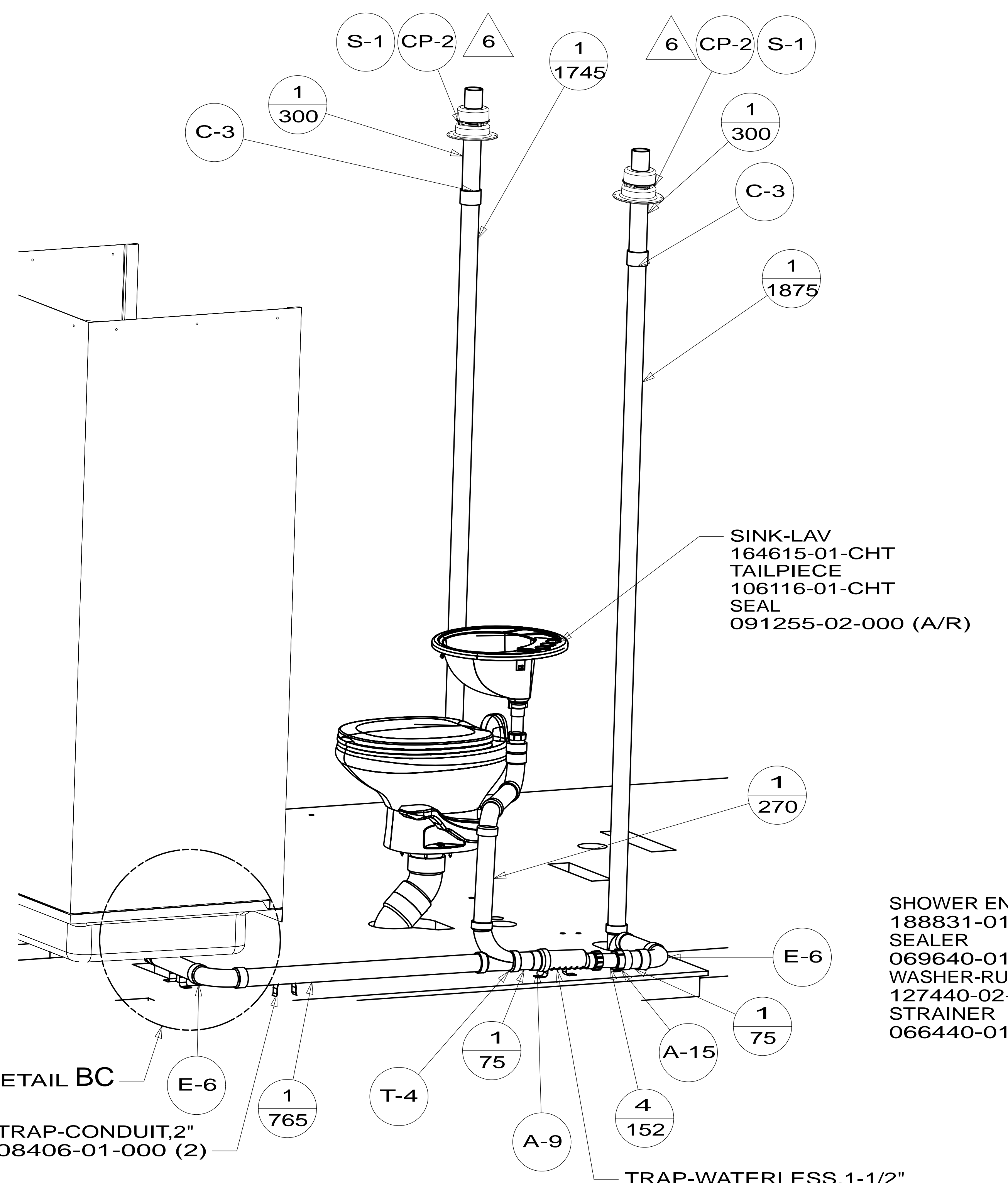
- NOTES:
1. SLOPE OF HORIZONTAL PIPING TO BE MINIMUM OF 3 PER 305 mm.
 2. SLOPE OF TRAP ARM MUST BE 6 PER 305 mm.
 3. ALL PIPE AND FITTINGS TO BE ASSEMBLED WITH SOLVENT 004020-01-000 (USA), 004020-02-000 (CAN)
 4. USE SMOOTH PLUMBERS PUTTY 167459-01-000 TO SEAL STRAINER (0.2 PER STRAINER).
 5. SEAL AROUND SHOWER WITH SILICONE.
 6. VENT PIPE MUST PROJECT 51 MIN AND 64 MAX ABOVE ROOF FOR PROPER FIT AND FUNCTION. ADD S-1 (116666-01-CHT SEAL-VENT PIPE) AROUND PIPE ON ROOF BEFORE VENT CAP IS INSTALLED.
 7. SECURE VENT PIPE TO FLOOR WITH CLAMP 062401-02-000 (2), SCREW 000G67-10-12U (2), BRACKET 136878-01-CHT (2).
 8. SECURE DRAINAGE PIPES TO CABINET USING WIRE TIE 108046-02-000, AND SCREW 000G67-10-12U AT INTERVALS OF NOT OF NOT MORE THAN 4 FEET APART.
 9. SEE DRAWING 061607 FOR INSTALLATION OF GROMMETS.
 10. TRIM TAIL PIECE TO FIT.

1B1 CODES/STANDARDS-USA
 265 CODES/STDA-CSA/CMVSS

		COPYRIGHT 2014 WINNEBAGO INDUSTRIES, INC.	
DFT-ORIG	ORIG. DATE	ALL DIMENSIONS ARE IN MILLIMETERS	
CHKR			
P.E.			
M.E.	FIRST USED		
DSNR		15 D30A	
UNSPECIFIED TOLERANCES ARE:		MATERIAL:	
WHOLE DIM (X)	: 3		
ONE-PLACE (X.X)	:		
TWO-PLACE (X.XX)	:		
ANGLE	:		
THIRD ANGLE PROJECTION			
DO NOT SCALE DRAWING		REFER TO ES0018 FOR FASTENER TIGHTENING GUIDELINES	
TITLE: DRAINAGE SYSTEM INSTL			
SHEET 1 OF 4	PART NO	188378	REV
REF:	1	24-Apr-2014	

FOR DRAINAGE CALLOUTS SEE DWG NO 116229-01-000

* 188378 * A



DETAIL BC
STRAP-CONDUIT, 2"
008406-01-000 (2)

VIEW BA

FIRST USED	15 D30A	
TITLE:	DO NOT SCALE DRAWING	
TITLE:	DRAINAGE SYSTEM INSTL	
SHEET 2	PART NO	188378
	REV	
		24-Apr-2014

* 188378 * A

SINK-GALLEY
173783-01-CHT
BRACKET
140002-01-CHT (8)
SCREW
142261-02-CHT (8)
STRAINER
092303-01-000 (2)
SEAL
091255-03-000
(2130)

NUT
130403-01-000
TAIL PIECE
011069-05-000 10

NUT
130403-01-000
TAIL PIECE
011069-05-000 10

STRAP-CONDUIT,2"
008406-01-000 (3)
SCREW
000G39-08-12U (6)

265 1/170 4
1B1 1/70

1/70 1B1
1/170 265

P-1 1B1
P-3 265
A-15 1B1

1/200 1B1
1/250 265

P-1 1B1
P-3 265
A-15 1B1

STRAP-CONDUIT,2"
008406-01-000
SCREW
000G39-08-12U (2)

3
1350

DETAIL G

A-14 T-1
ELBOW
136111-01-000

VIEW CA

1/290 E-1 1/315 E-1 1/1145 E-1 1/195 E-1 1/500 Y-1 1/175

ELBOW
136111-01-000

A-13

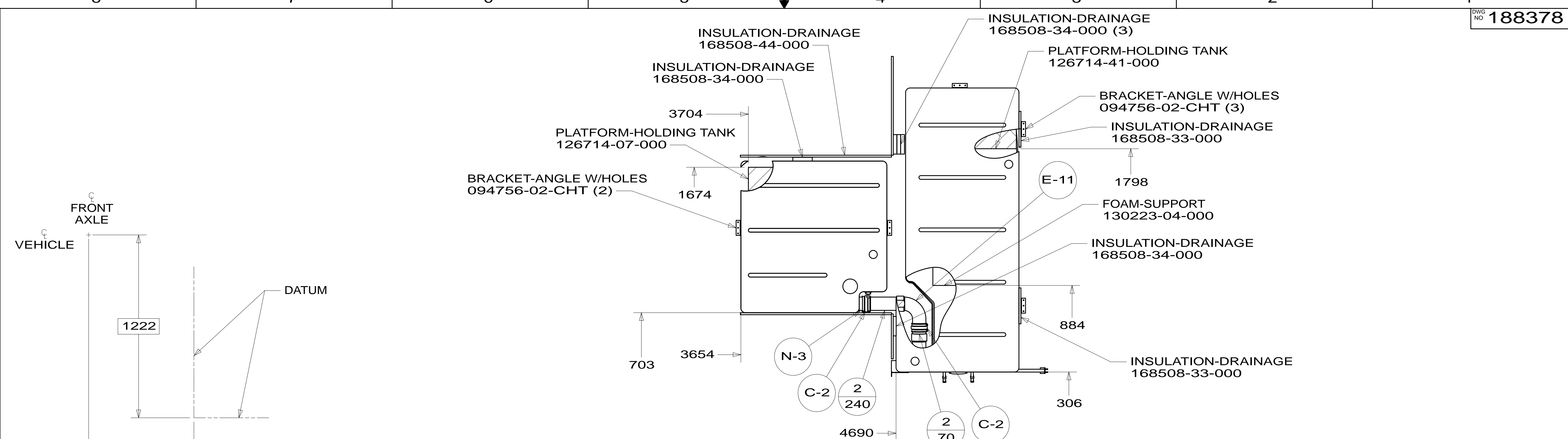
FITTING-BULKHEAD
136656-01-CHT

1/55 G-1 C-3 1/110

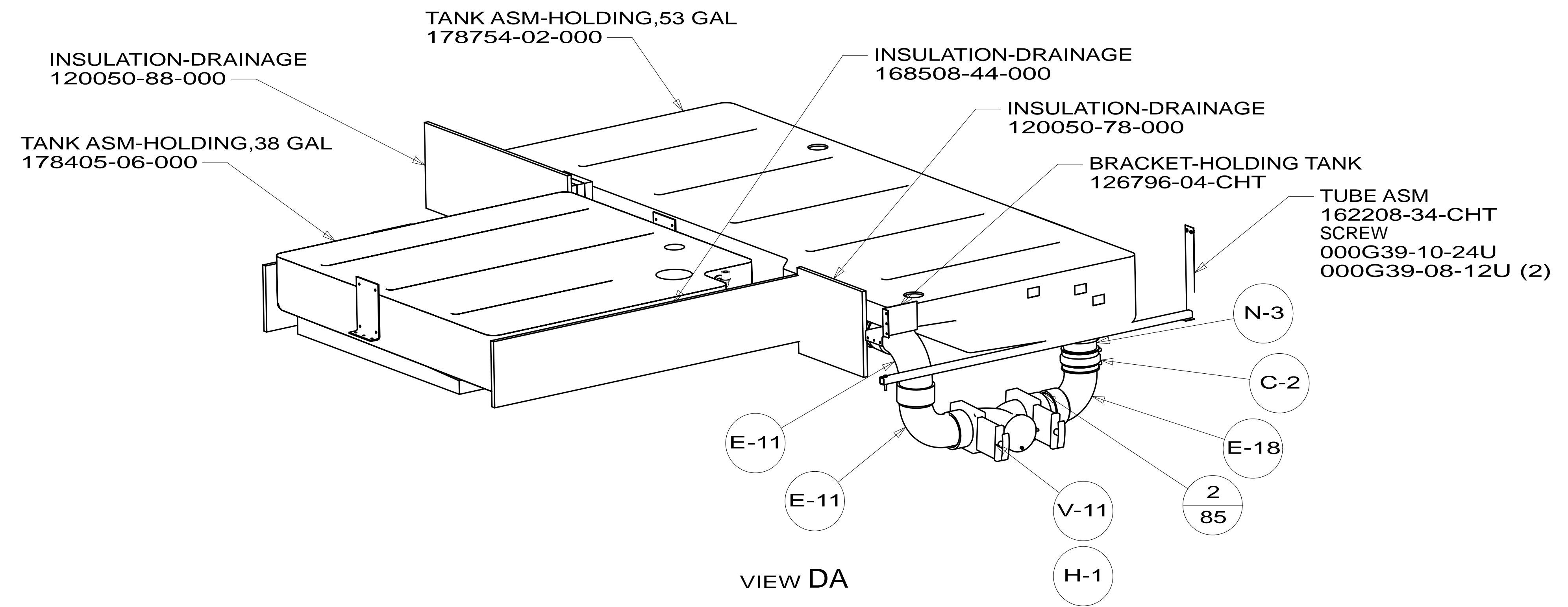
DETAIL G

FIRST USED	15 D30A
TITLE:	DO NOT SCALE DRAWING
TITLE:	DRAINAGE SYSTEM INSTL
SHEET 3	PART NO 188378 REV
	24-Apr-2014

*188378 *A



SHOWING TANKS AND DRAINS



FIRST USED	15 D30A	
TITLE:	DO NOT SCALE DRAWING	
TITLE:	DRAINAGE SYSTEM INSTL	
SHEET 4	PART NO 188378	REV
		24-Apr-2014

* 188378 * A

8

7

6

5

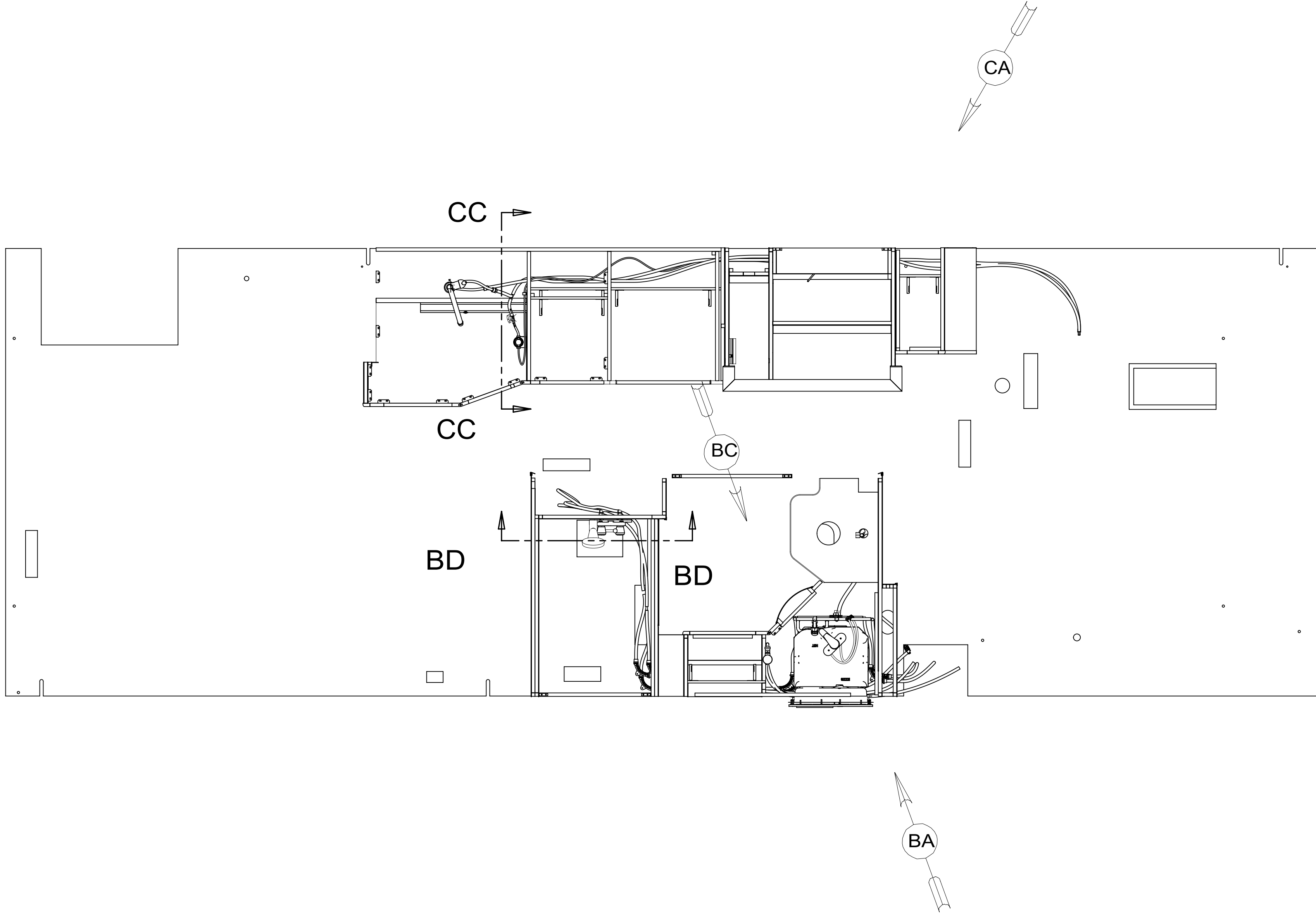
4

3

2

1

RELEASE	REV/DATE	DWG NO	188382
REV ZONE	REVISION RECORD	DATE	DFTR-ORIG



- 9. ALL CRIMP FITTINGS TO 3/4" PEX TUBING REQUIRE 3/4" CLAMP 140171-05-000.
- 8. ALL CRIMP FITTINGS TO 1/2" PEX TUBING REQUIRE 1/2" CLAMP 140171-03-000.
- 7. ALL CRIMP FITTINGS TO 5/8" FLEX TUBING REQUIRE 5/8" CLAMP 140171-04-000.
- 6. LABEL HOT AND COLD SUPPLY TUBES AND TAPE FITTING TO TUBE BEFORE CABINET SET TO PREVENT MOVEMENT.
- 5. ADD PIPE WRAP (LADDER SCRAP 110157-02-000) INSULATION.
- 4. ADD TEFLON TAPE 010405-02-000.
- 3. ALL TUBING TO BE SECURED AT 1200 INTERVALS MAXIMUM WITH CLAMP 010495-01-000 AND SCREW 000G67-10-12U OR EQUIVALENT.
- 2. TUBING TO BE INSTALLED WITH SUFFICIENT SLOPE TO PROVIDE DRAINAGE TO NEAREST VALVE.
- 1. PLASTIC FITTINGS TO BE SEALED WITH SEALANT 084456-01-000.

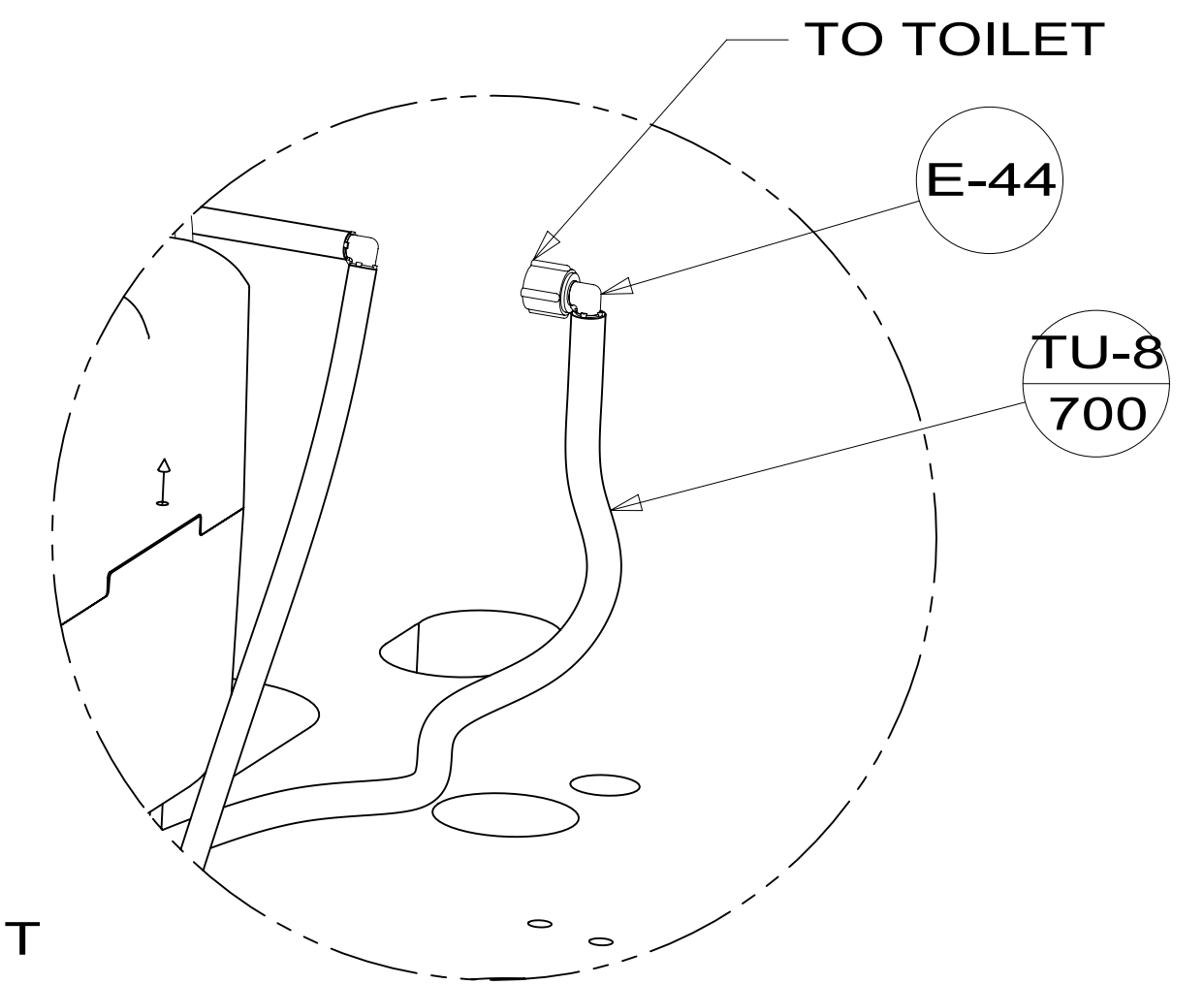
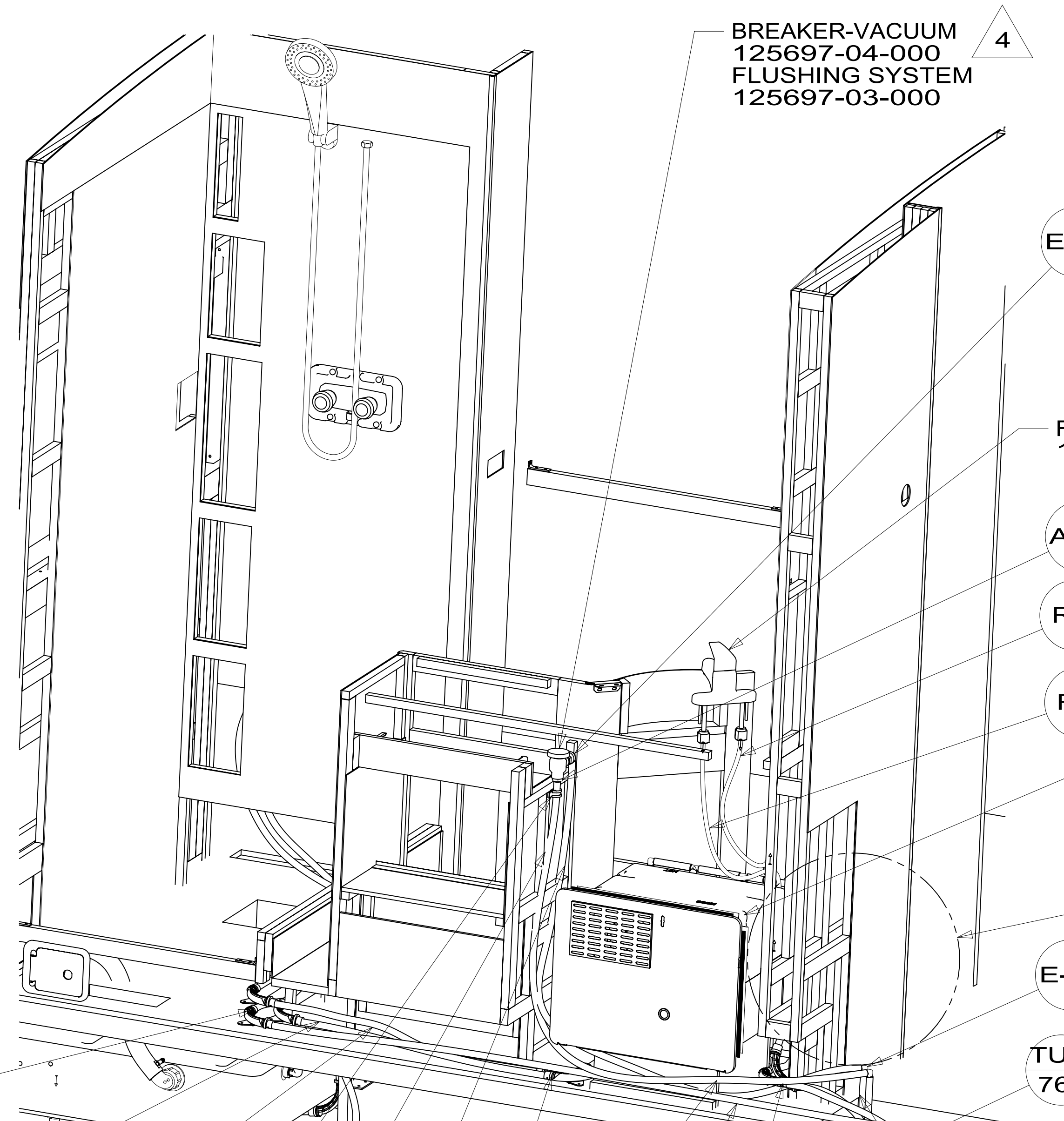
NOTES:

WINNEBAGO INDUSTRIES, INC. COPYRIGHT 2014

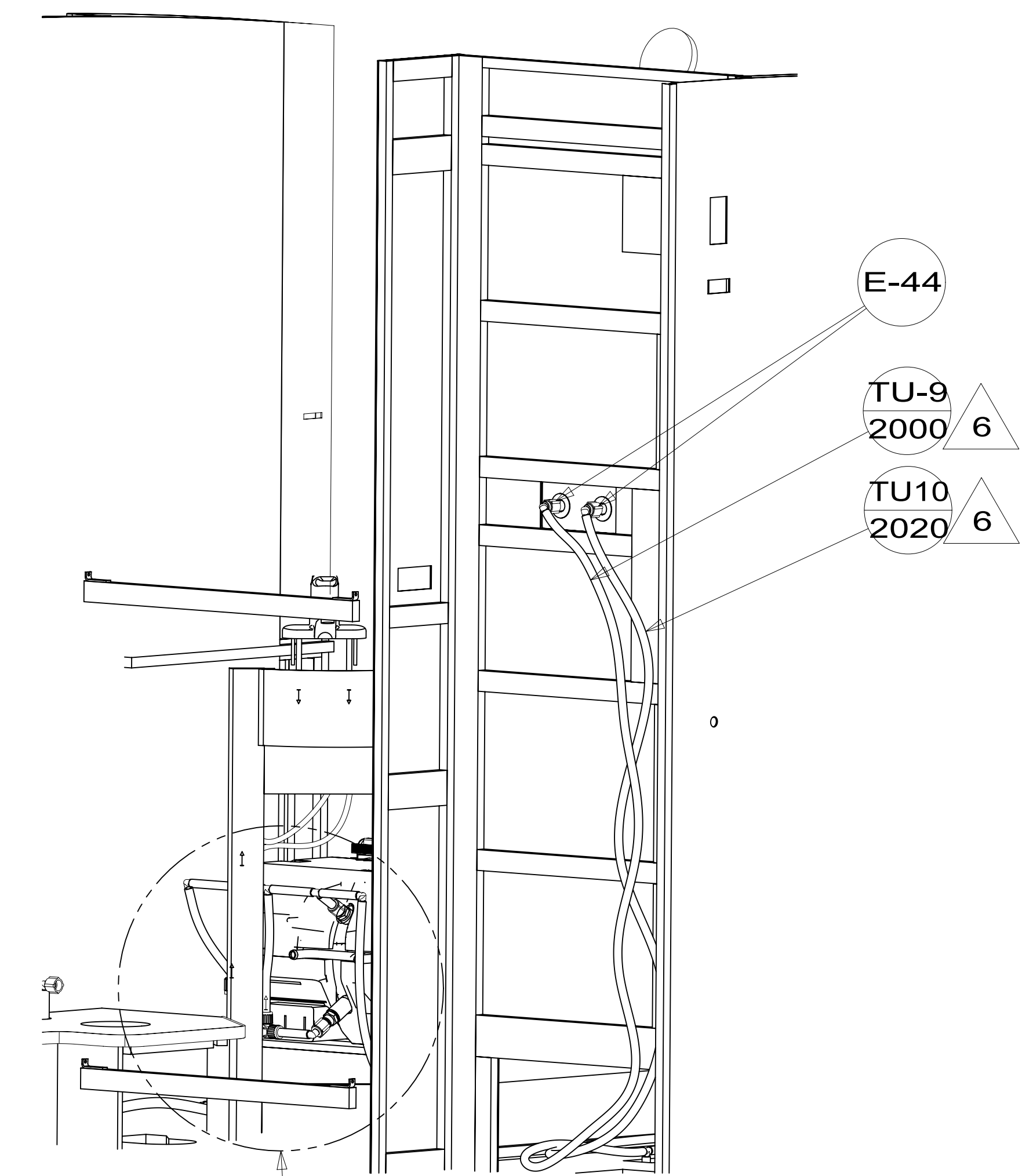
DFTR	ORIG. DATE
CHKR	ALL DIMENSIONS ARE IN MILLIMETERS
P.E.	
M.E.	FIRST USED
DSNR	15 D30A
UNSPECIFIED TOLERANCES ARE:	
WHOLE DIM (X)	: 3
ONE-PLACE (X.X)	:
TWO-PLACE (X.XX)	:
ANGLE	:
THIRD ANGLE PROJECTION	
DO NOT SCALE DRAWING	REFER TO ES0018 FOR FASTENER TIGHTENING GUIDELINES
TITLE: WATER SYSTEM INSTL	
SHEET 1 OF 4	PART NO 188382 REV
REF:	1 22-May-2015

FOR WATER CALLOUTS SEE DWG NO 116230-01-000

188382

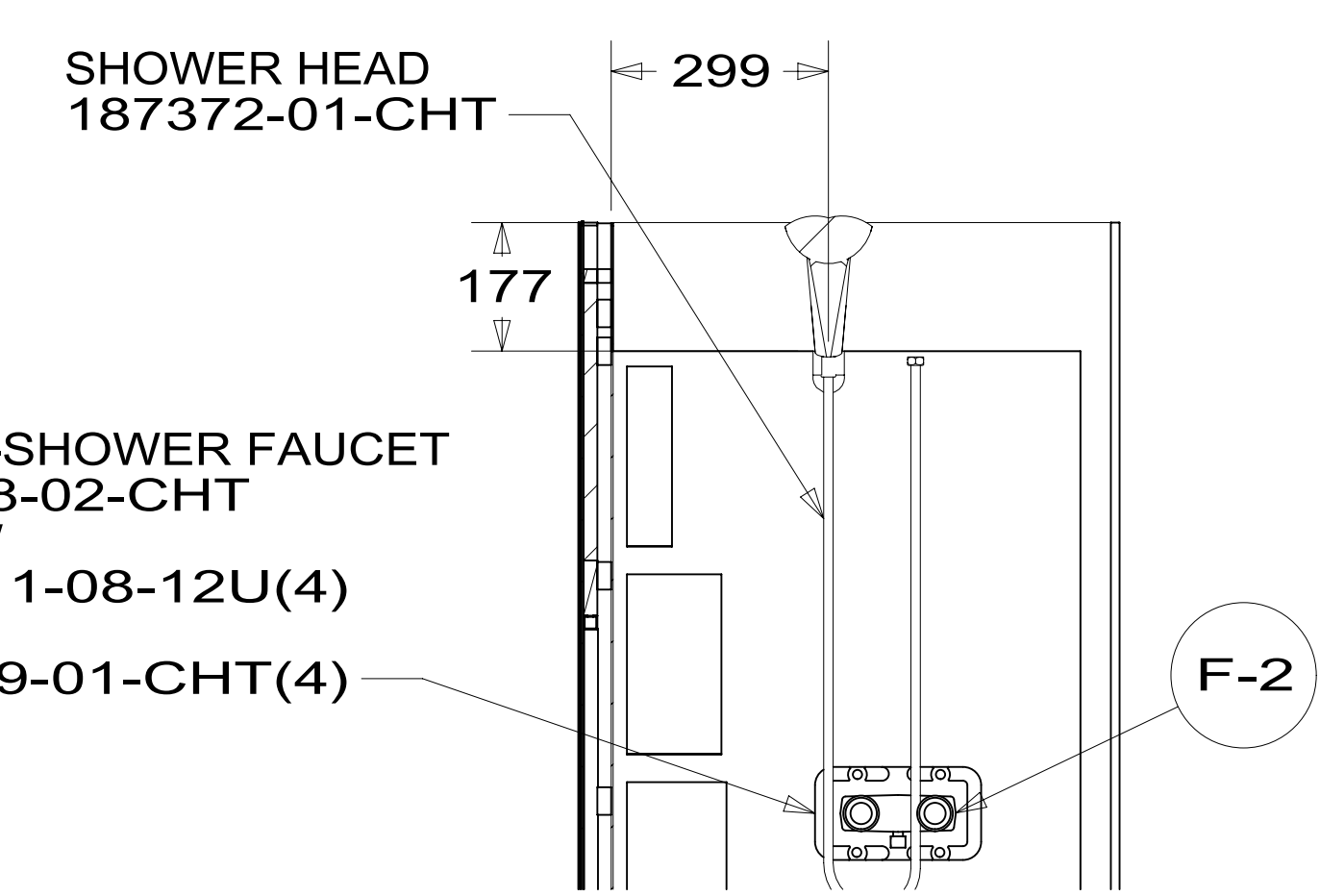


DETAIL BE
(SHOWN W/OUT CABINETS)

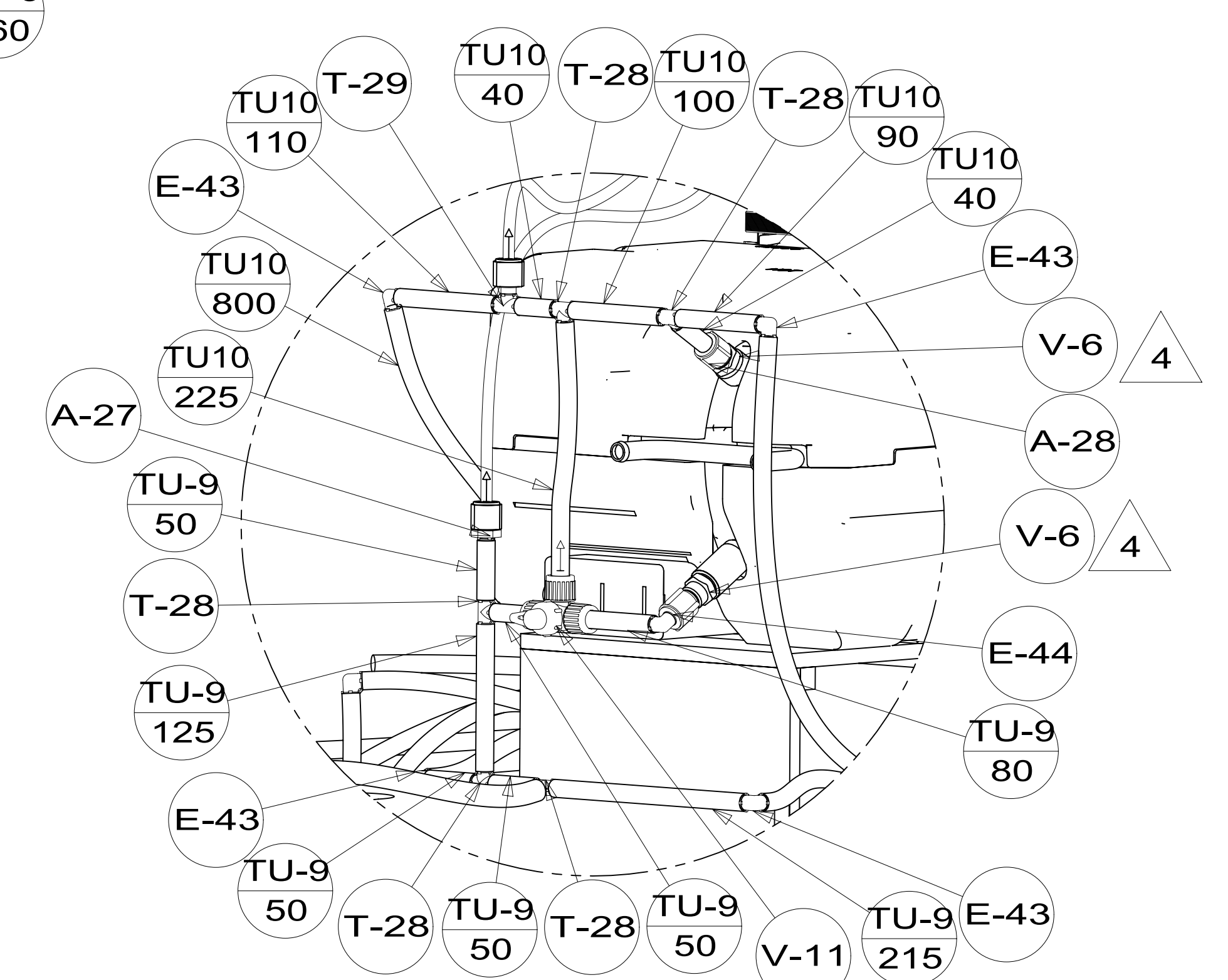


VIEW BC

DETAIL BB



SECTION BD-BD

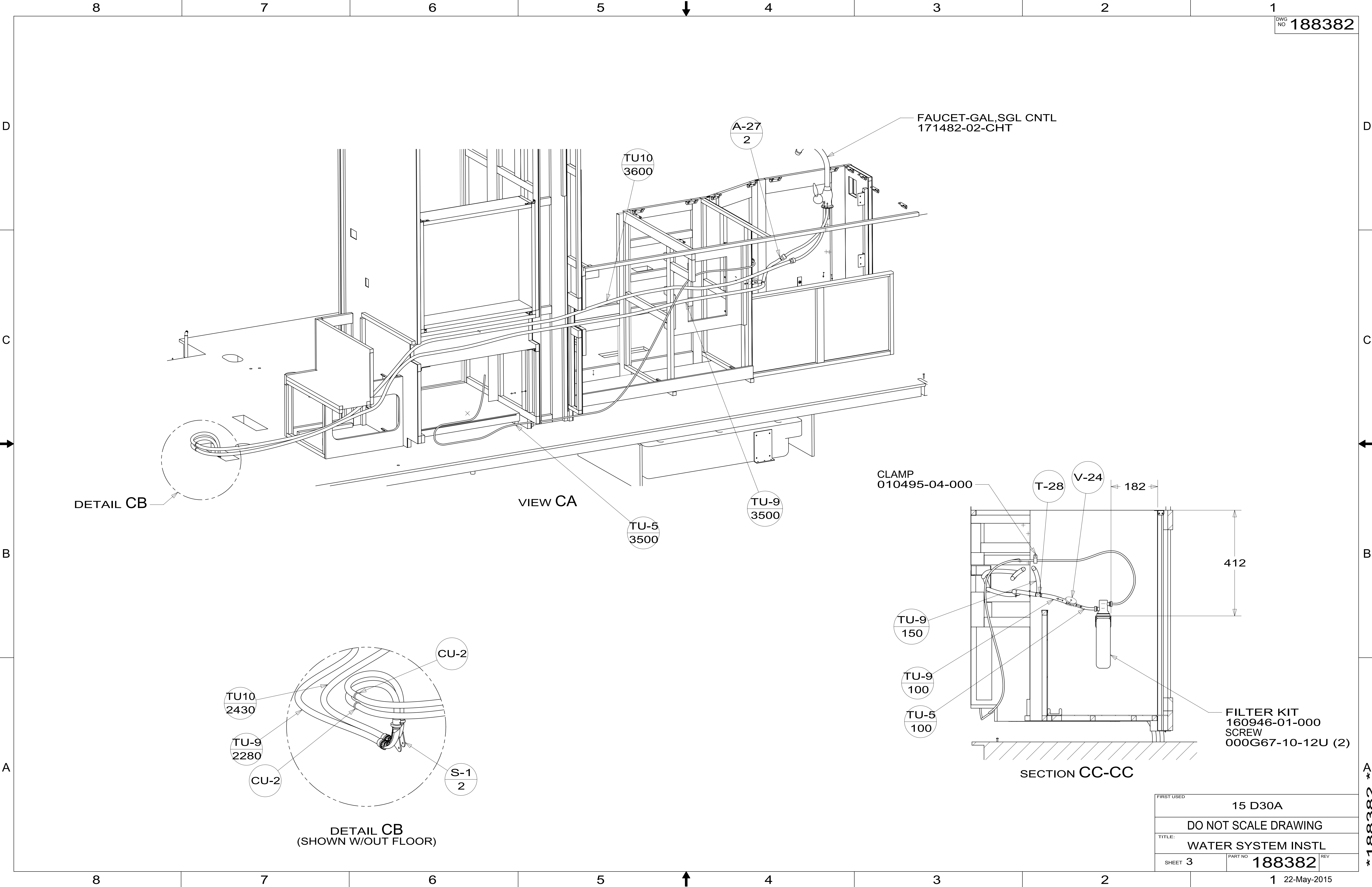


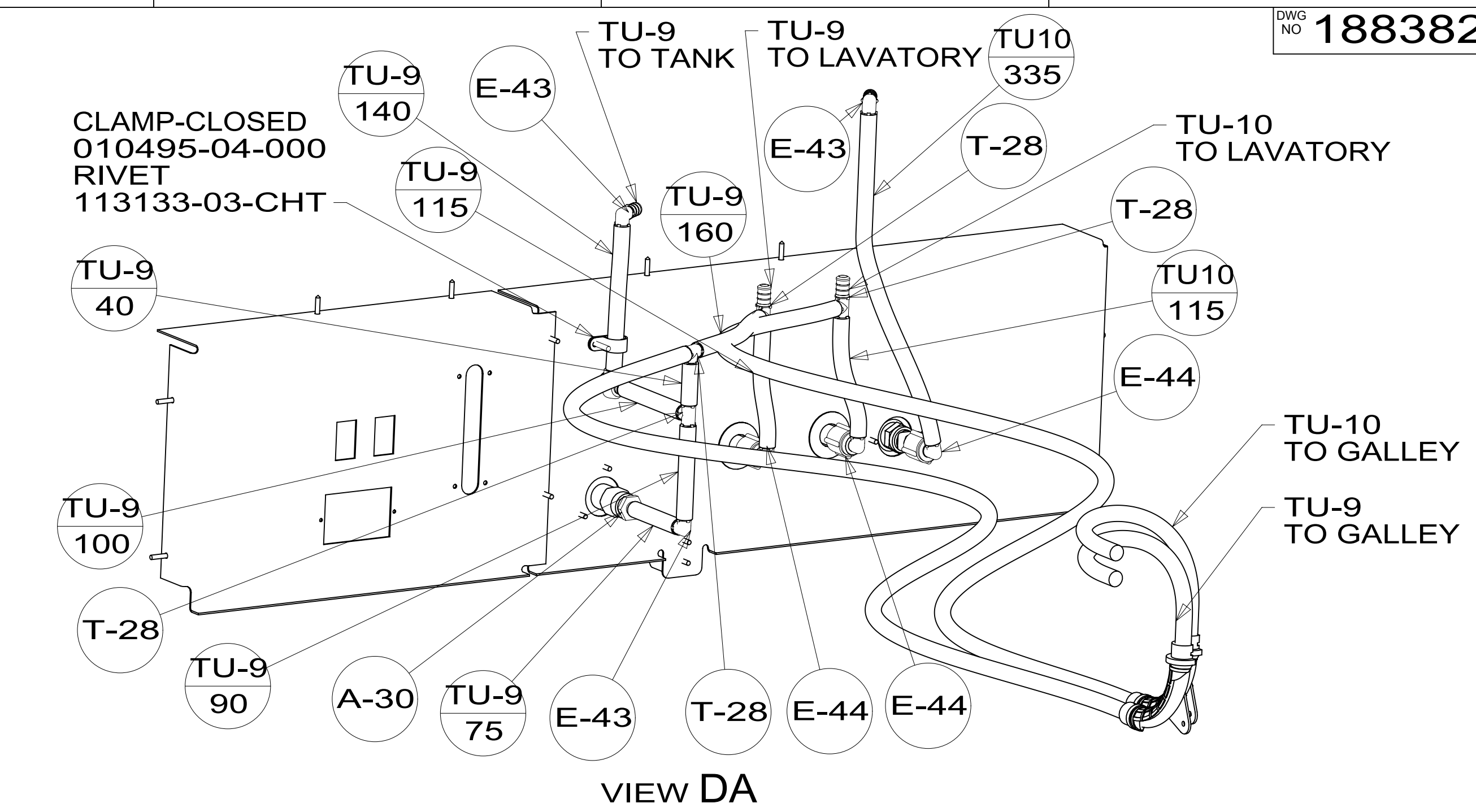
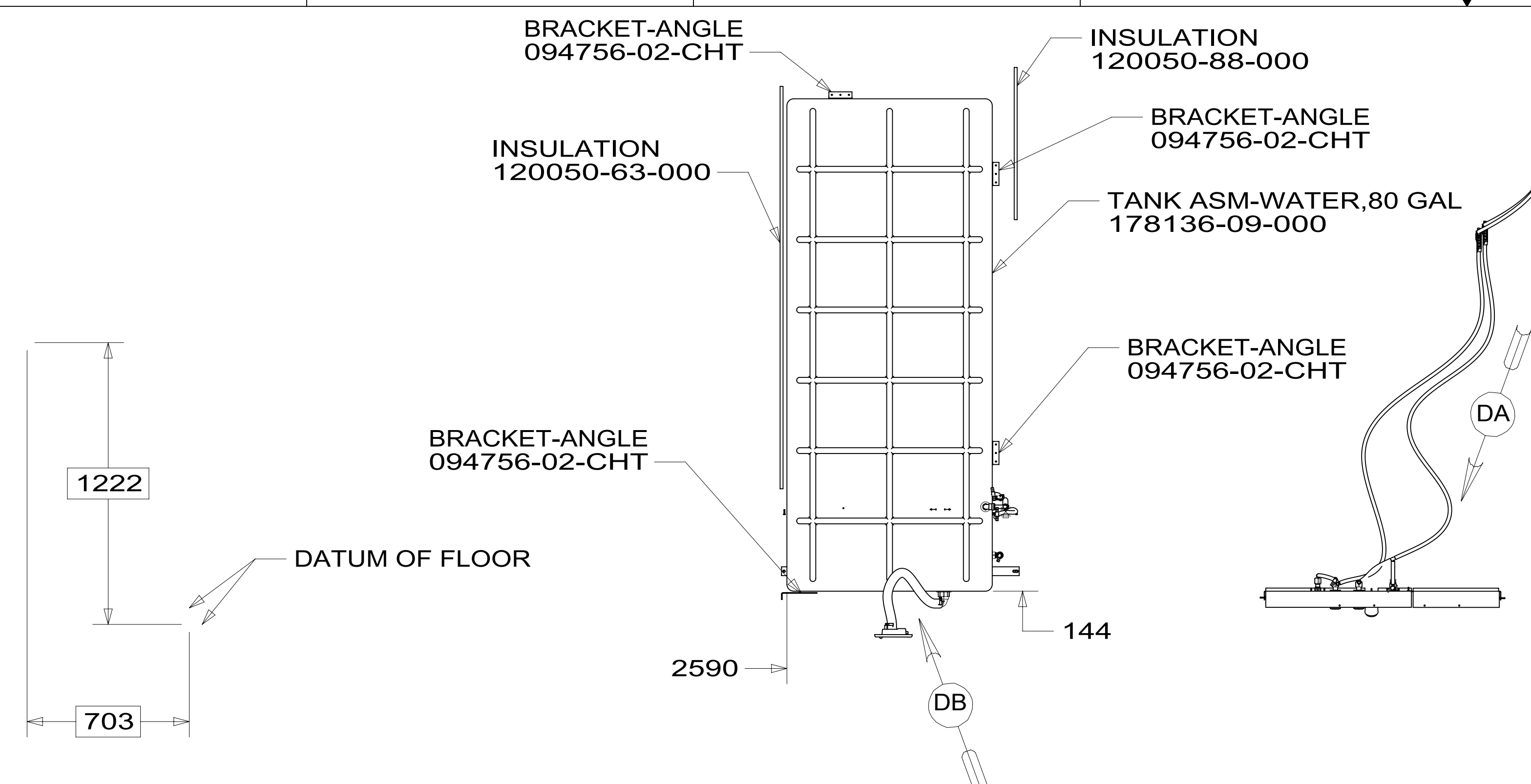
DETAIL BB
(SHOWN W/OUT CABINETS)

VIEW BA

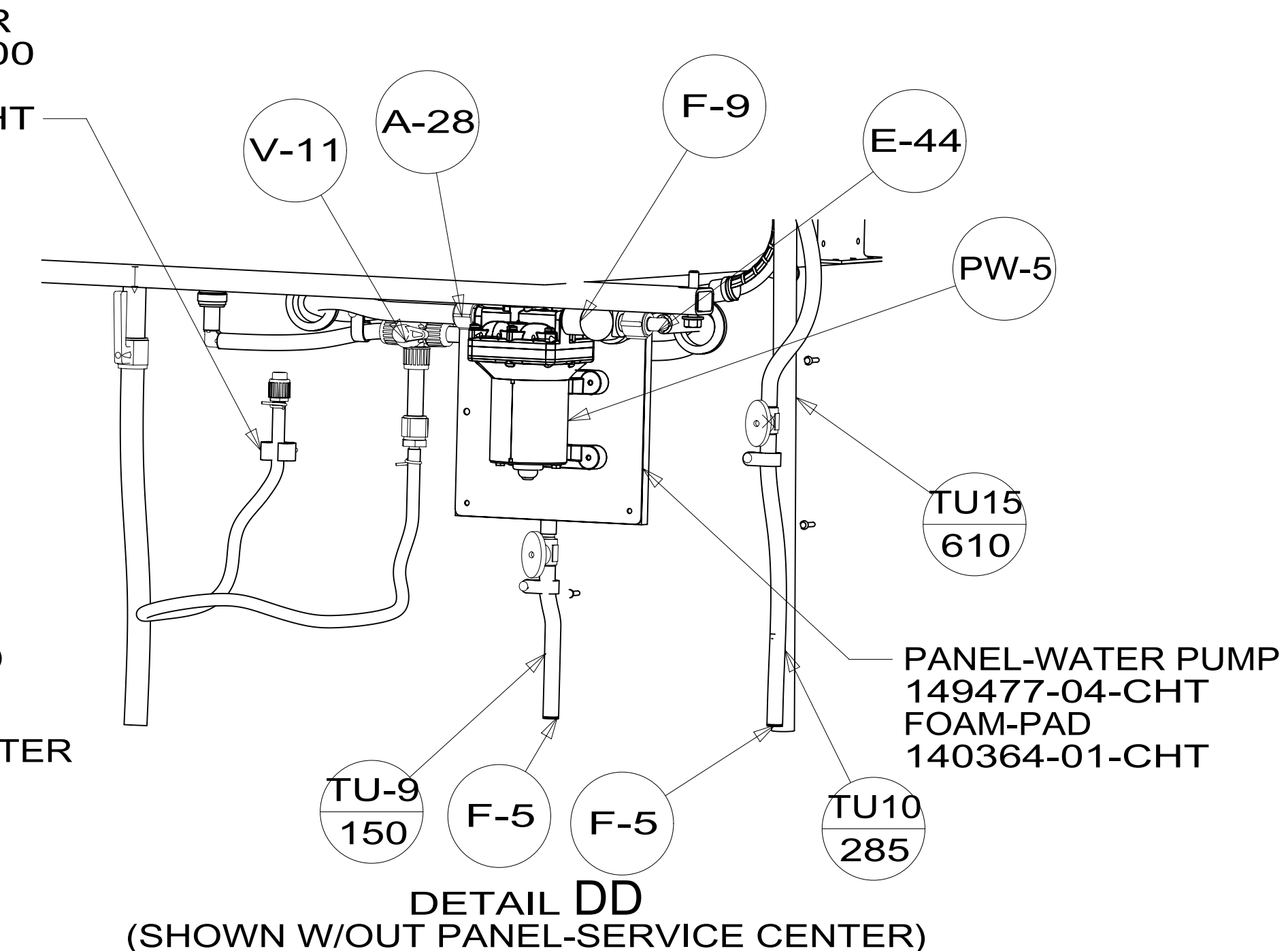
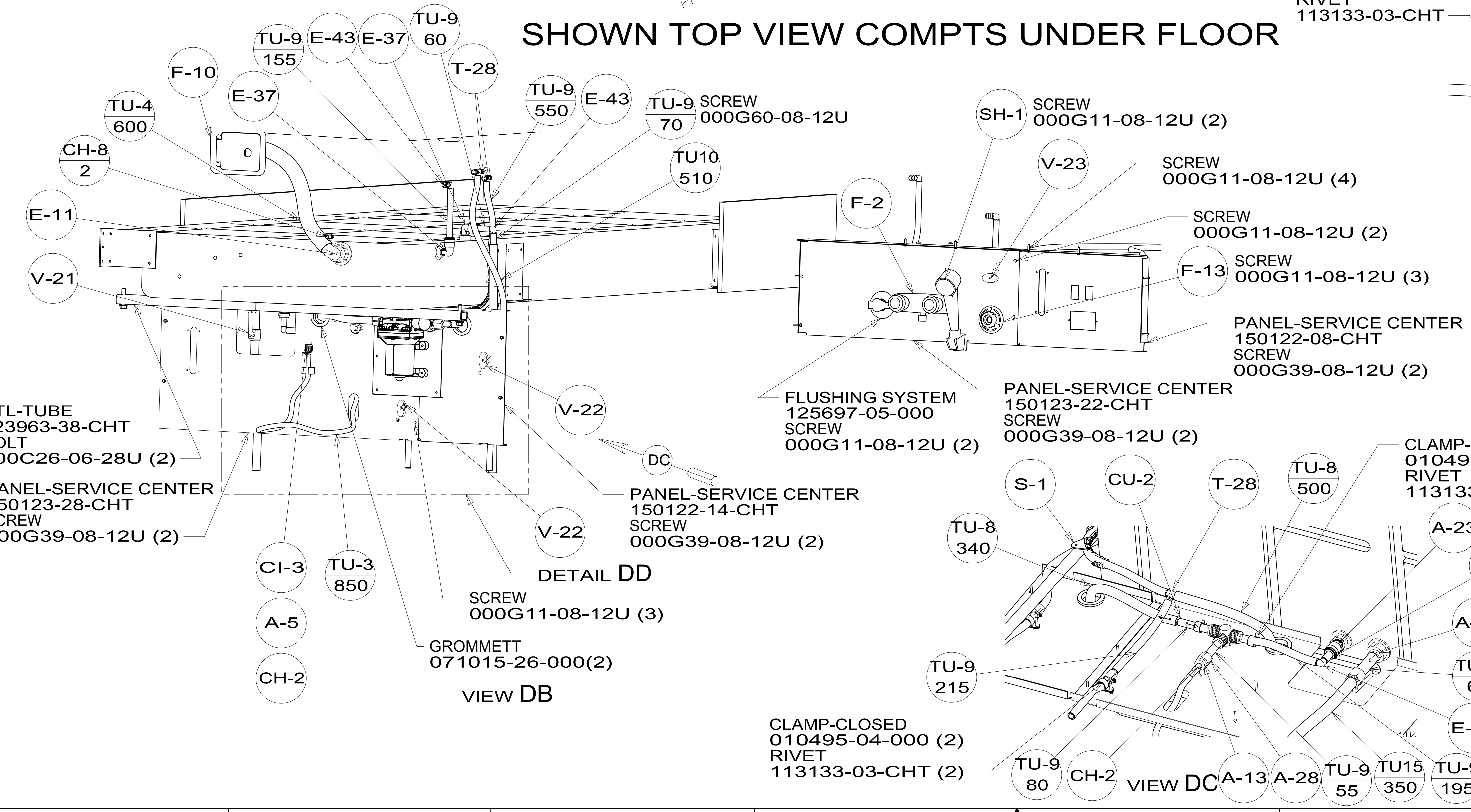
FIRST USED	15 D30A	
TITLE:	DO NOT SCALE DRAWING	
TITLE:	WATER SYSTEM INSTL	
SHEET 2	PART NO	188382
	REV	1

*188382





SHOWN TOP VIEW COMPTS UNDER FLOOR



FIRST USED	15 D30A	
TITLE:	DO NOT SCALE DRAWING	
TITLE:	WATER SYSTEM INSTL	
SHEET 4	PART NO 188382	REV
1 22-May-2015		

* 188382 A *