

- 9. SEE DRAWING 061607 FOR INSTALLATION OF GROMMETS.
- 8. SECURE DRAINAGE PIPES TO CABINET USING WIRE TIE 108046-02-000, AND SCREW 000G67-10-12U AT INTERVALS OF NOT OF NOT MORE THAN 4 FEET APART.
- 7. SECURE VENT PIPE TO FLOOR WITH CLAMP 062401-02-000 (2), SCREW 000G67-10-12U (2), BRACKET 136878-01-CHT (2).
- 6. VENT PIPE MUST PROJECT 51 MIN AND 64 MAX ABOVE ROOF FOR PROPER FIT AND FUNCTION. ADD 116666-01-CHT (S-1 SEAL-VENT PIPE) AROUND PIPE ON ROOF BEFORE VENT CAP IS INSTALLED.
- 5. SEAL AROUND SHOWER WITH SILICONE.
- 4. USE SMOOTH PLUMBERS PUTTY 167459-01-000 TO SEAL STRAINER (0.2 PER STRAINER).
- 3. ALL PIPE AND FITTINGS TO BE ASSEMBLED WITH SOLVENT 004020-01-000 (USA), 004020-02-000 (CAN)
- 2. SLOPE OF TRAP ARM MUST BE 6 PER 305 mm.
- 1. SLOPE OF HORIZONTAL PIPING TO BE MINIMUM OF 3 PER 305 mm.

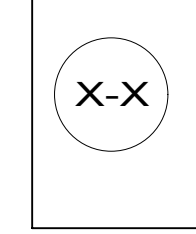
NOTES:

(265) CODES/STANDARDS-CSA/CMVSS
 (1B1) CODES/STANDARDS USA

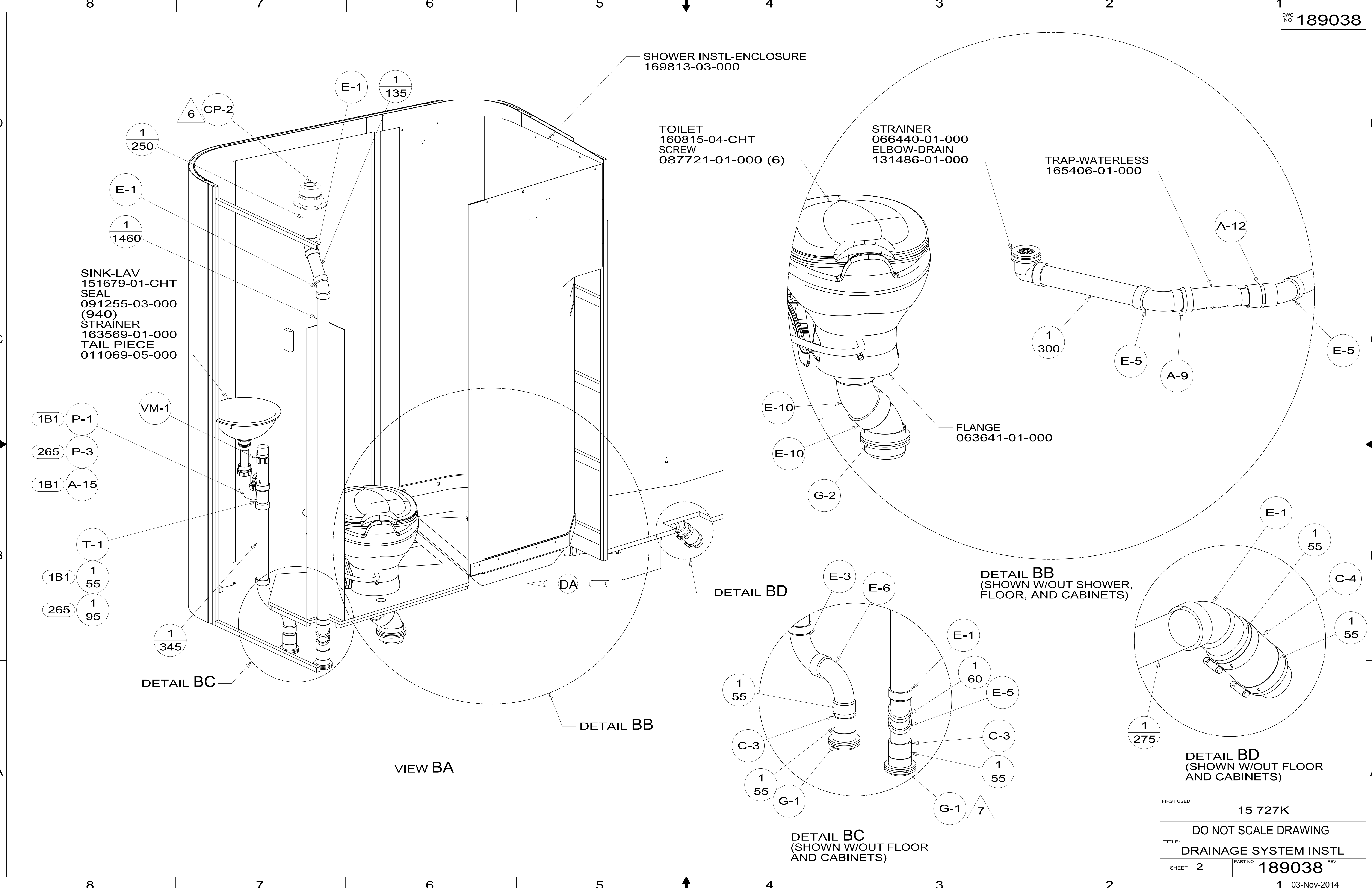


DFTR	ORIG. DATE
CHKR	ALL DIMENSIONS ARE IN MILLIMETERS
P.E.	
M.E.	FIRST USED
DSNR	15 727K
UNSPECIFIED TOLERANCES ARE:	
WHOLE DIM (X)	: 3
ONE-PLACE (X.X)	: 1.5
TWO-PLACE (X.XX)	: 0.50
ANGLE	: 1°
THIRD ANGLE PROJECTION	
DO NOT SCALE DRAWING	REFER TO ES0018 FOR FASTENER TIGHTENING GUIDELINES
TITLE: DRAINAGE SYSTEM INSTL	
SHEET 1 OF 4	PART NO 189038 REV
REF:	1 03-Nov-2014

FOR DRAINAGE CALLOUTS SEE DWG NO 116229-01-000

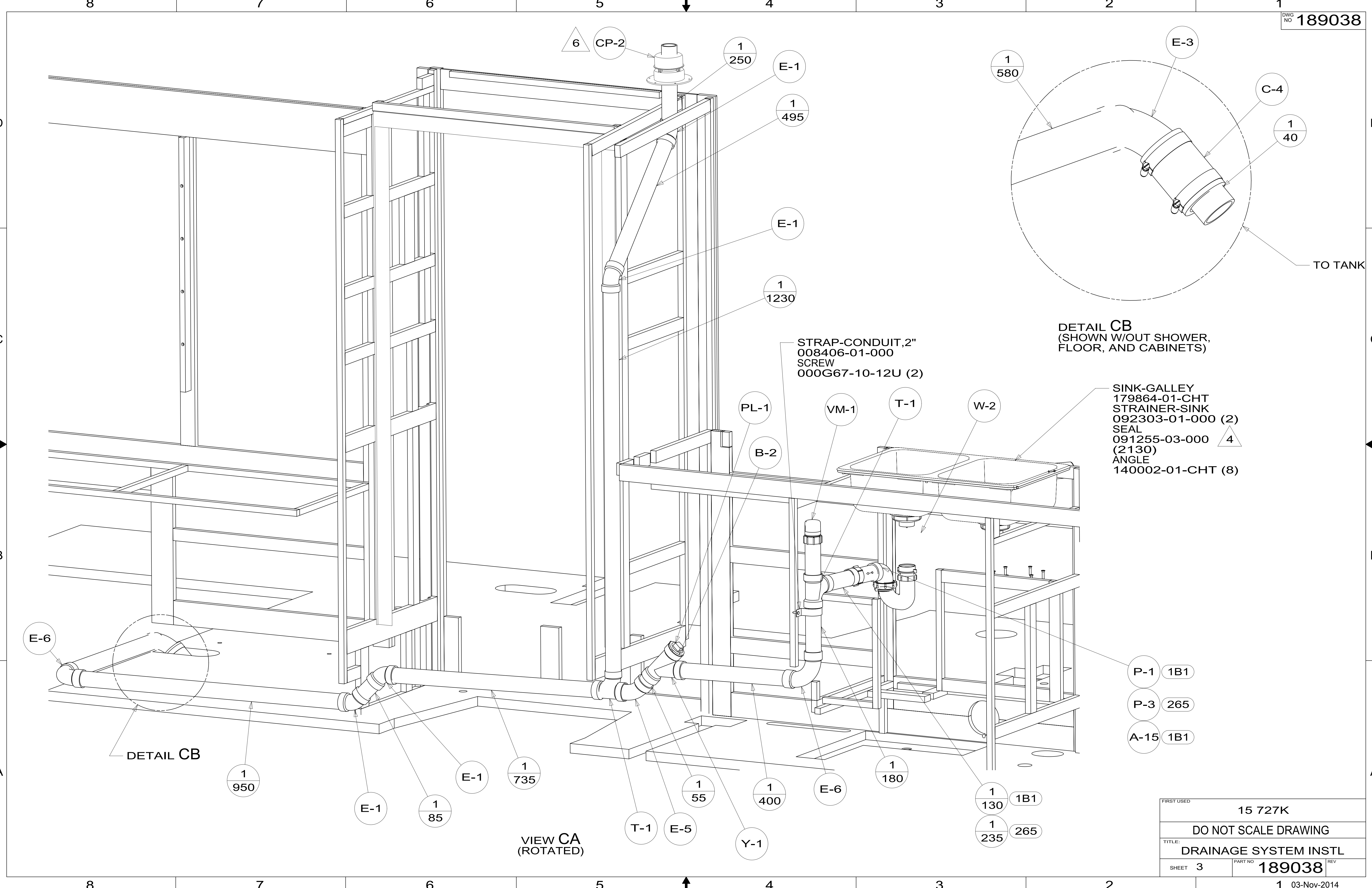


* 189038 *



FIRST USED	15 727K	
TITLE:	DO NOT SCALE DRAWING	
TITLE:	DRAINAGE SYSTEM INSTL	
SHEET 2	PART NO 189038	REV
1 03-Nov-2014		

* 189038 A *



DETAIL CB
(SHOWN W/OUT SHOWER,
FLOOR, AND CABINETS)

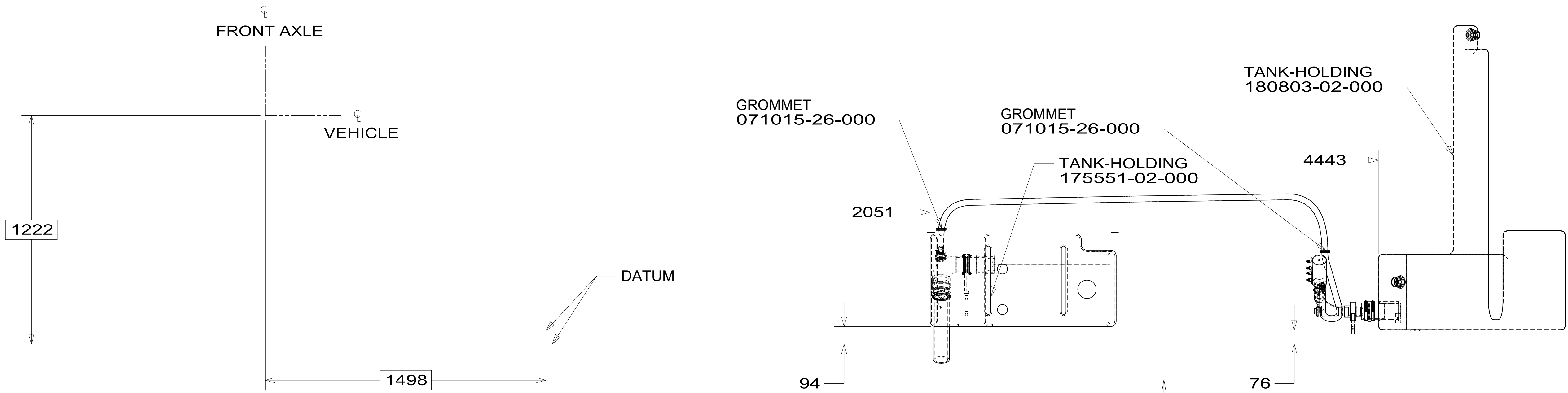
SINK-GALLEY
179864-01-CHT
STRAINER-SINK
092303-01-000 (2)
SEAL
091255-03-000 (2130) \triangle 4
ANGLE
140002-01-CHT (8)

STRAP-CONDUIT, 2"
008406-01-000
SCREW
000G67-10-12U (2)

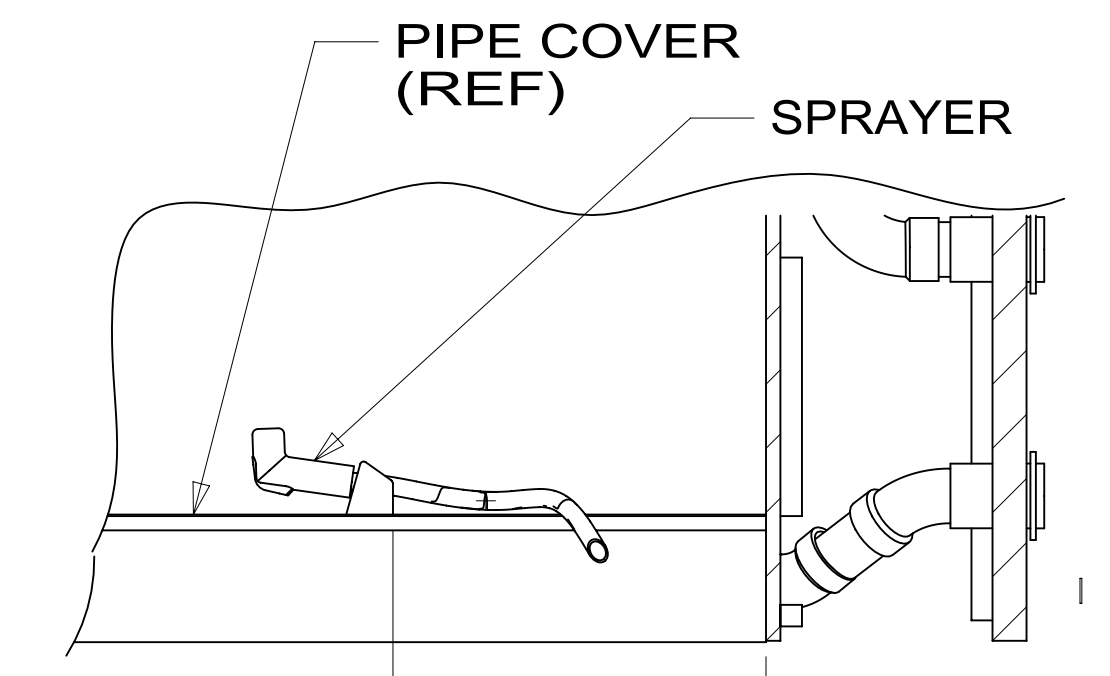
VIEW CA
(ROTATED)

FIRST USED	15 727K	
DO NOT SCALE DRAWING		
TITLE: DRAINAGE SYSTEM INSTL		
SHEET 3	PART NO 189038	REV
1 03-Nov-2014		

* 189038 A *



SHOWING TANKS AND DRAINS ONLY

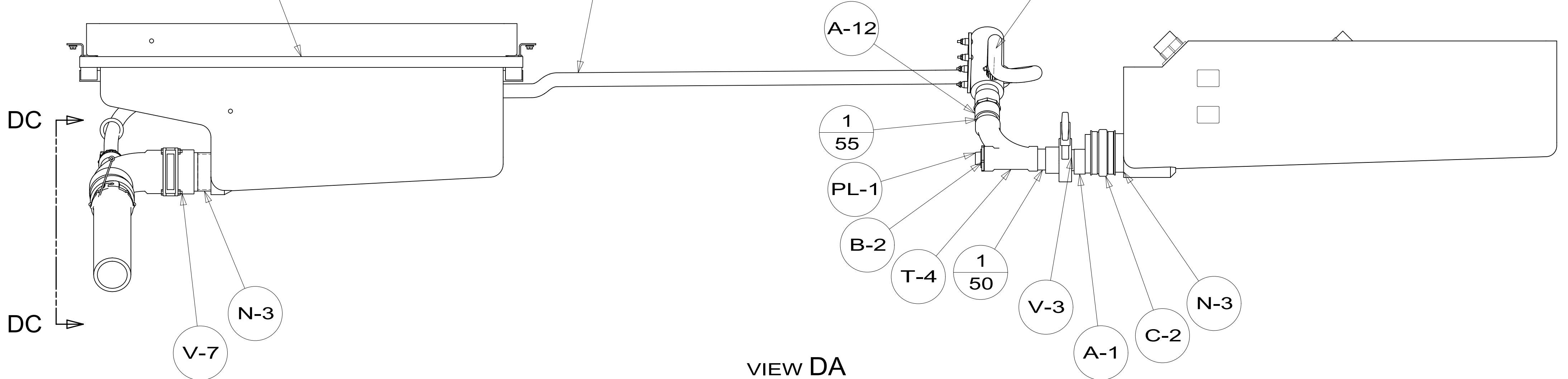


SECTION DB-DB

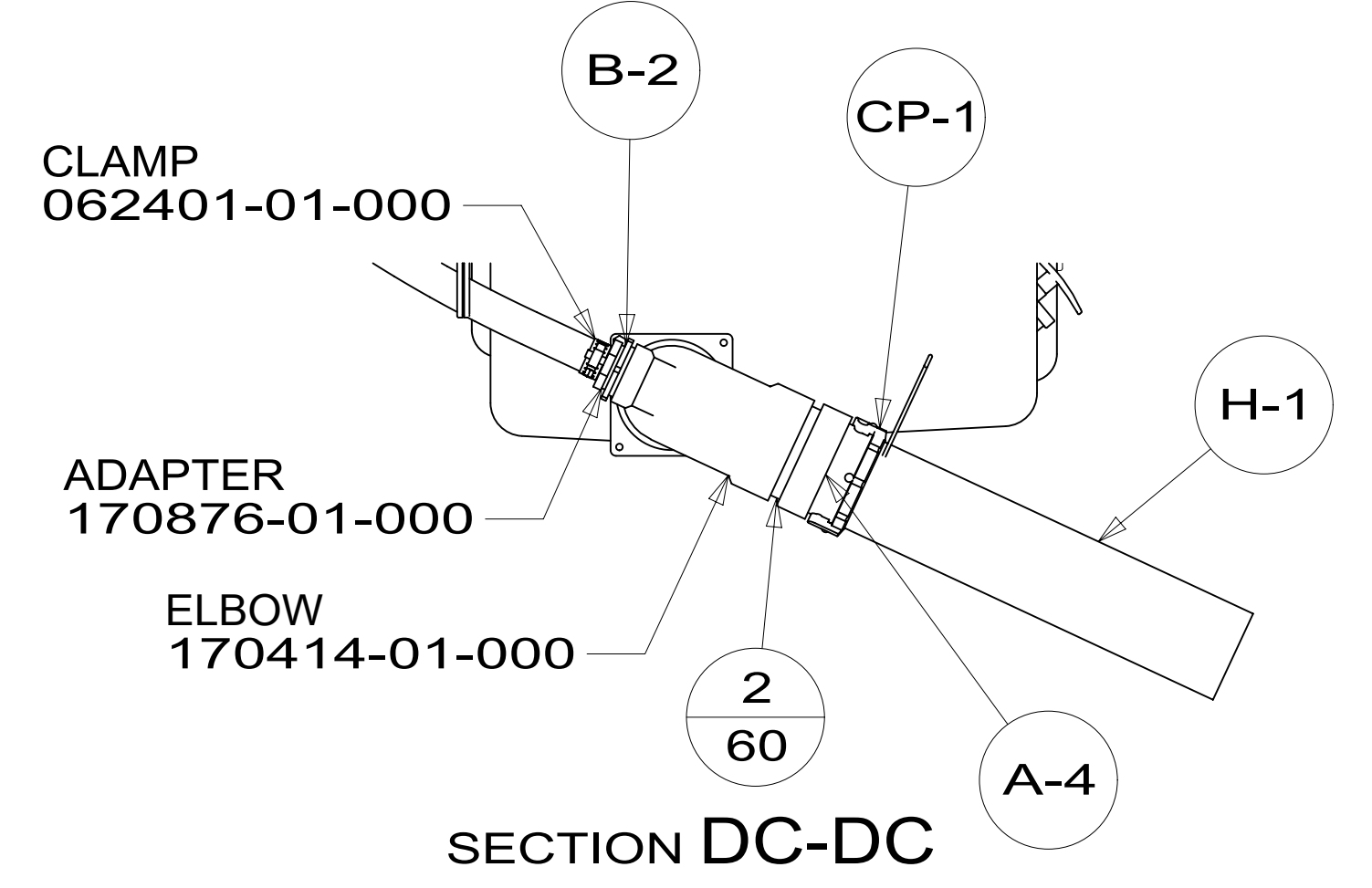
- CRADLE ASM 156612-08-CHT
- WASHER 000E13-16-00U (4)
- NUT 000D39-05-00U (4)

- HOSE 177021-01-000 (3500)
- (WIRE TIE MACERATOR PUMP HOSE UP TO THE CHASSIS FRAME ASM)

- PUMP-MACERATOR 165762-02-000
- CLAMP 062401-01-000
- SCREW 000G19-10-20U(4)
- WASHER 000E13-11-00U(8)
- NUT 000D24-10-00U(4)



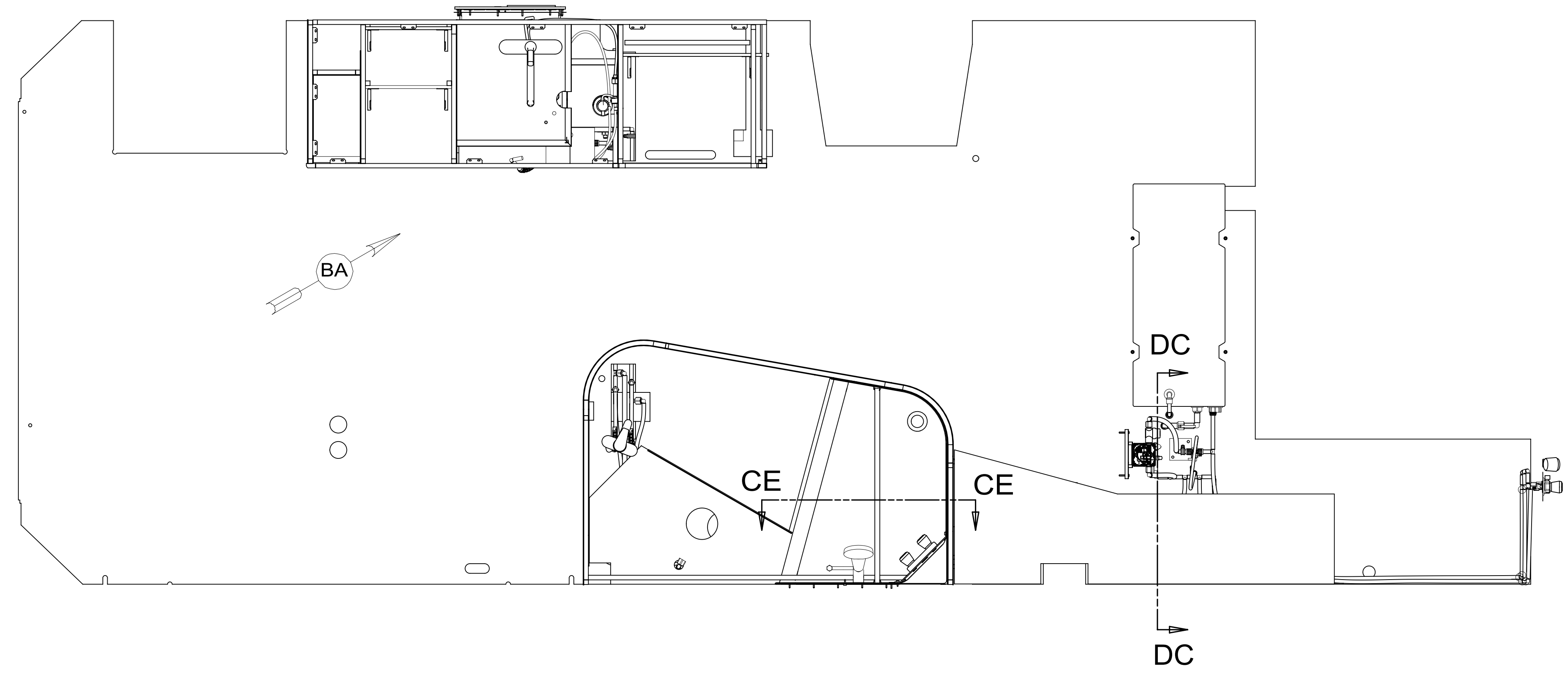
VIEW DA



SECTION DC-DC

FIRST USED	15 727K	
TITLE:	DO NOT SCALE DRAWING	
TITLE:	DRAINAGE SYSTEM INSTL	
SHEET 4	PART NO 189038	REV
1 03-Nov-2014		

* 189038 *



- (1BT) WATER HEATER-TANKLESS
- (53B) WTR HTR-6 GAL ELECTRIC/LP GAS
- (29B) WATER PURIFIER
- (501) WATER PURIFIER-WITHOUT
- (53E) WATER SYS WINTERIZATION PKG

- NOTES:
9. ALL CRIMP FITTINGS TO 3/4" PEX TUBING REQUIRE 3/4" CLAMP 140171-05-000.
 8. ALL CRIMP FITTINGS TO 1/2" PEX TUBING REQUIRE 1/2" CLAMP 140171-03-000.
 7. ALL CRIMP FITTINGS TO 5/8" FLEX TUBING REQUIRE 5/8" CLAMP 140171-04-000.
 6. LABEL HOT AND COLD SUPPLY TUBES AND TAPE FITTING TO TUBE BEFORE CABINET SET TO PREVENT MOVEMENT.
 5. ADD PIPE WRAP (LADDER SCRAP 110157-02-000) INSULATION.
 4. ADD TEFLON TAPE 010405-01-000.
 3. ALL TUBING TO BE SECURED AT 1200 INTERVALS MAXIMUM WITH CLAMP 010495-01-000 AND SCREW 000G67-10-12U OR EQUIVALENT.
 2. TUBING TO BE INSTALLED WITH SUFFICIENT SLOPE TO PROVIDE DRAINAGE TO NEAREST VALVE.
 1. PLASTIC FITTINGS TO BE SEALED WITH SEALANT 084456-01-000.

(X-X)
FOR WATER CALLOUTS SEE DWG NO 116230-01-000

WINNEBAGO INDUSTRIES, INC. COPYRIGHT 2014

DFT-ORIG	ORIG. DATE
CHKR	ALL DIMENSIONS ARE IN MILLIMETERS
P.E.	
M.E.	FIRST USED
DSNR	15 727K
UNSPECIFIED TOLERANCES ARE:	
WHOLE DIM (X)	: 3
ONE-PLACE (X.X)	:
TWO-PLACE (X.XX)	:
ANGLE	:
THIRD ANGLE PROJECTION	
DO NOT SCALE DRAWING	REFER TO ES0018 FOR FASTENER TIGHTENING GUIDELINES
TITLE: WATER SYSTEM INSTL	
SHEET 1 OF 4	PART NO 188938 REV
REF:	1 29-May-2015

188938

FAUCET-GALLEY
149164-01-CHT

DETAIL BC

29B

RT-1 29B
RT2 740

CLAMP
010495-04-000 29B
SCREW
000G67-10-12U 29B

29B

RT-2
RT-1 29B
680

FILTER KIT-WATER,SINK
160946-03-000 29B
SCREW
000G67-10-12U (2)

I-3 29B & 79W

I-1 29B & 79W

I-2 29B & 79W

CLAMP
010497-03-000 (2)
SCREW
000G67-08-12U (2)

WATER HEATER INSTL
186899-03-000
CABLE
076767-03-000
SCREW
000G11-06-08U (2)

DETAIL BF

V-6 4

TU10 220

TU-9 40

TU-9 510

TU10 655

E-43

V-11

TU-9 60

S-1

E-44

S-1

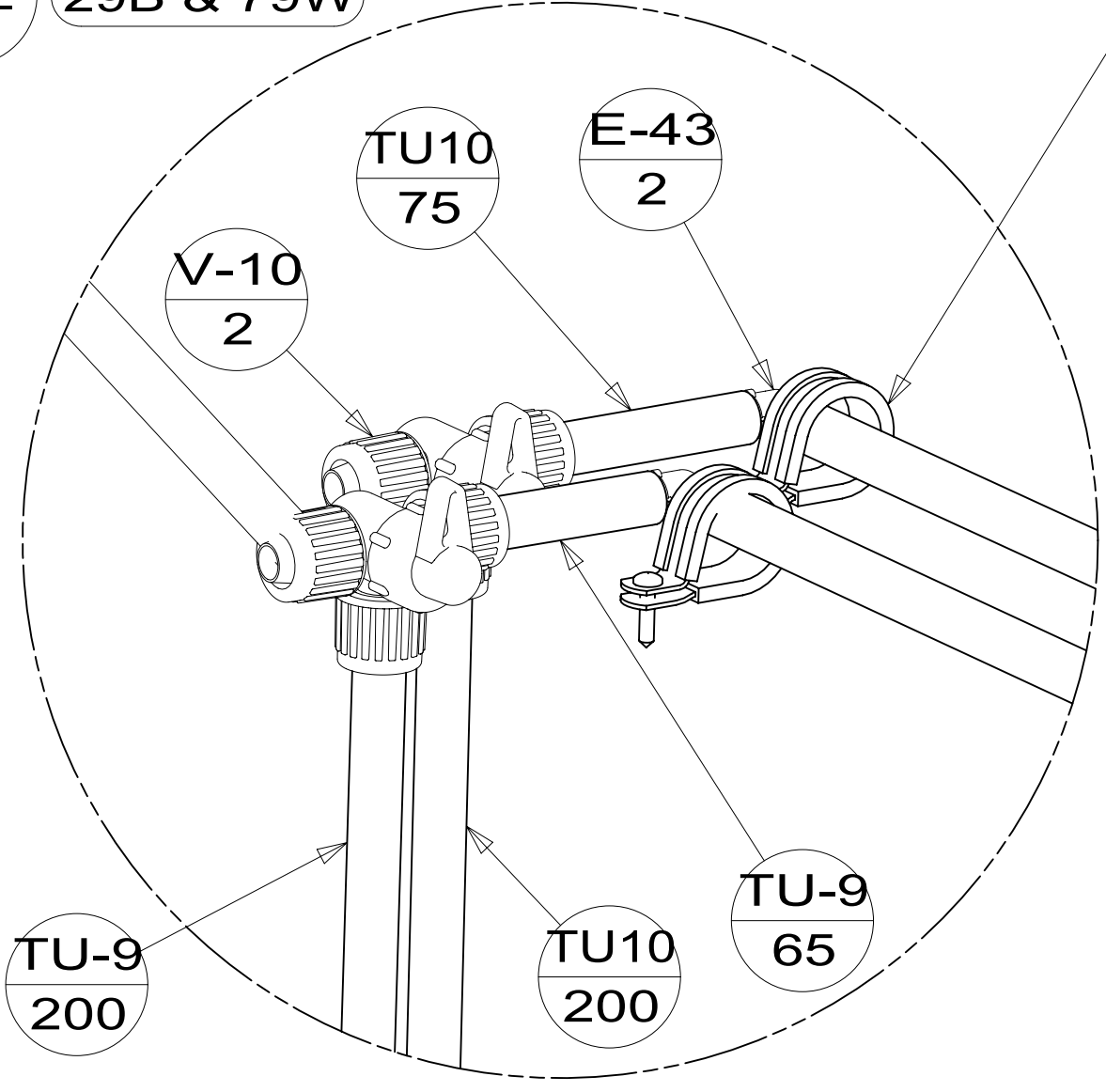
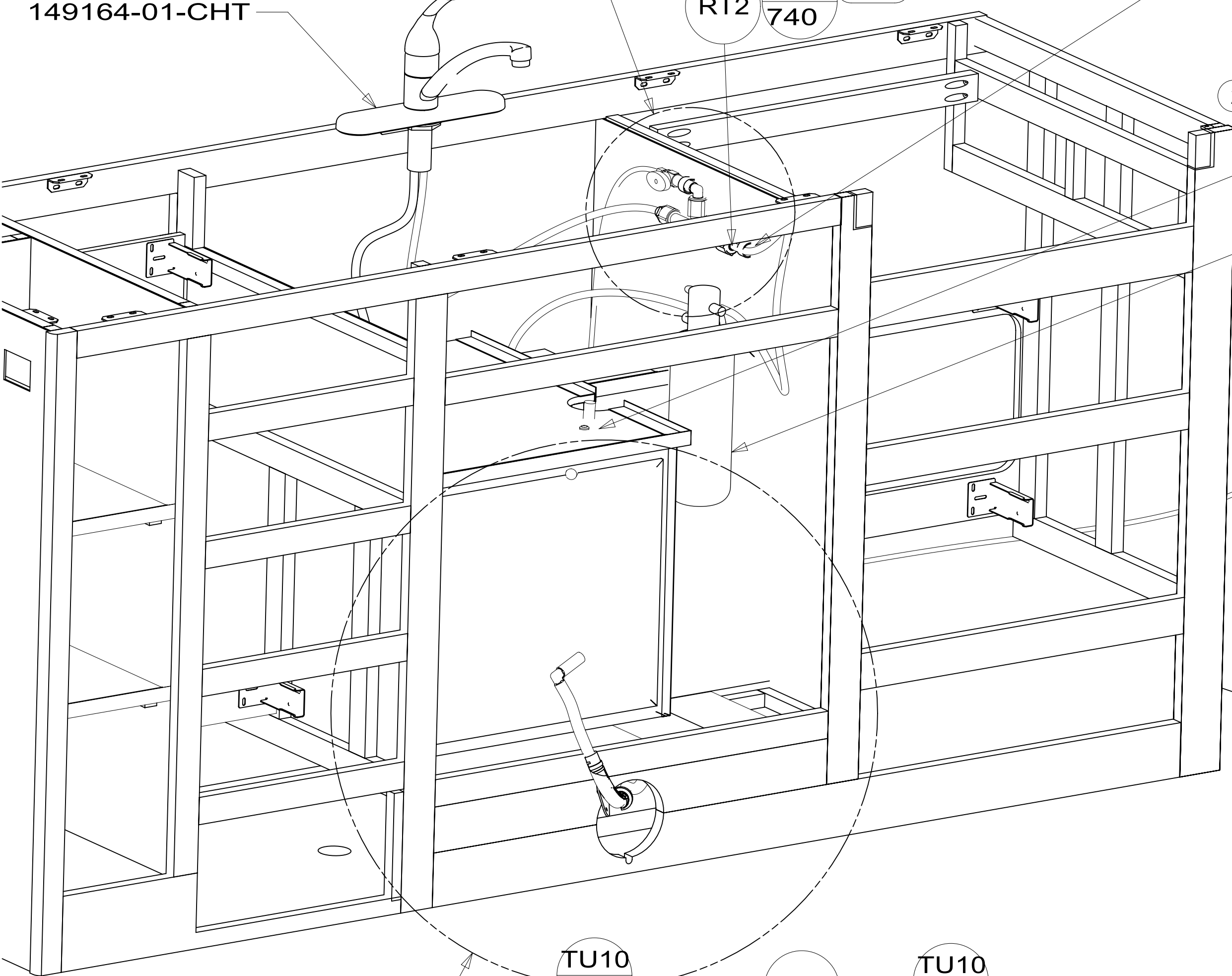
TU-9 420

T-28

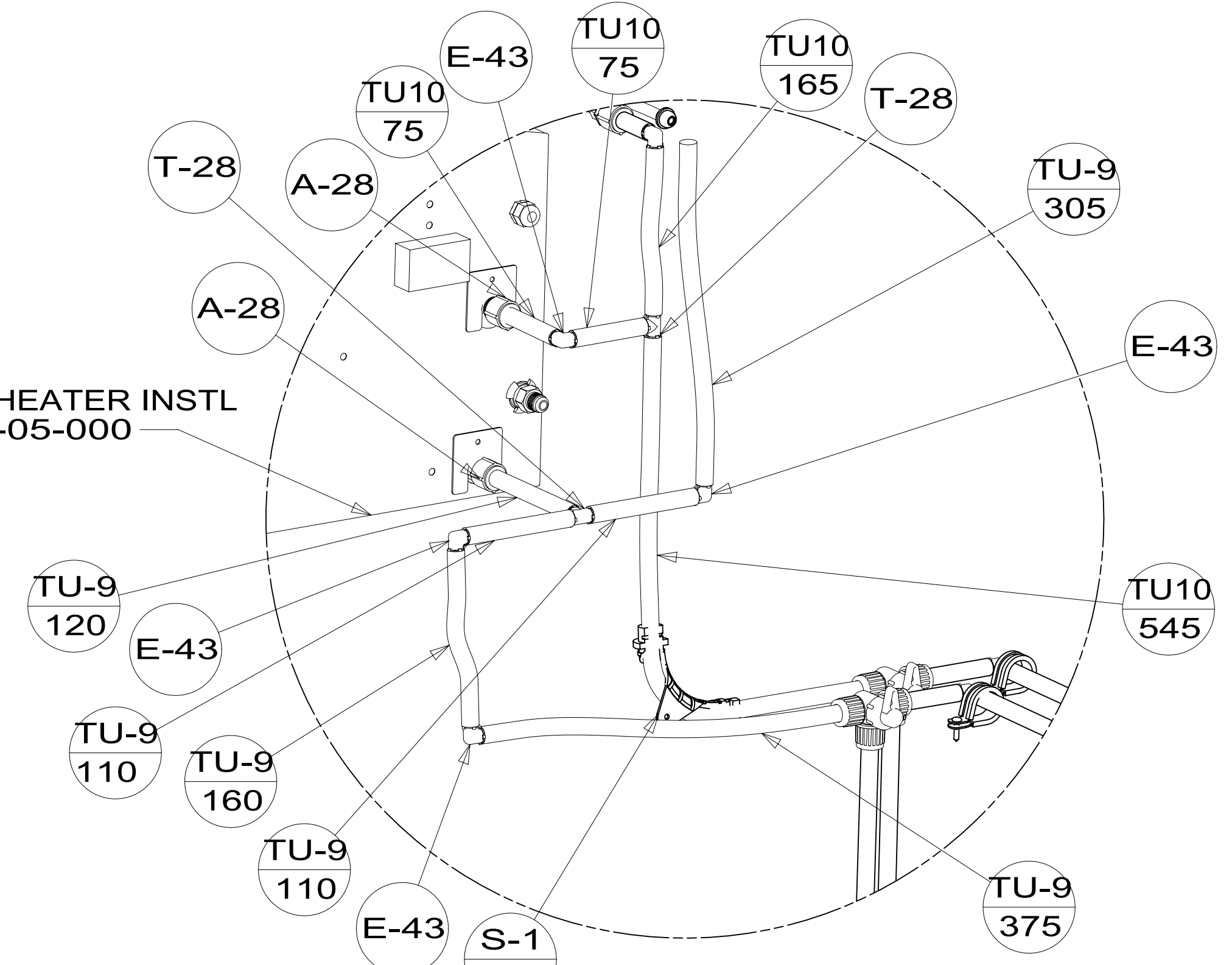
TU-9 120

DETAIL BE

DETAIL BB
(SHOWN W/OUT CABINETS & FLOOR)
53B



DETAIL BE



DETAIL BB
(SHOWN W/OUT CABINETS & FLOOR)
1BT

DETAIL BB

VIEW BA

TU10 40
A-26
TU10 40
A-26 501
A-28

53B

53B T-28

53B TU10 75

53B E-43

53B A-27

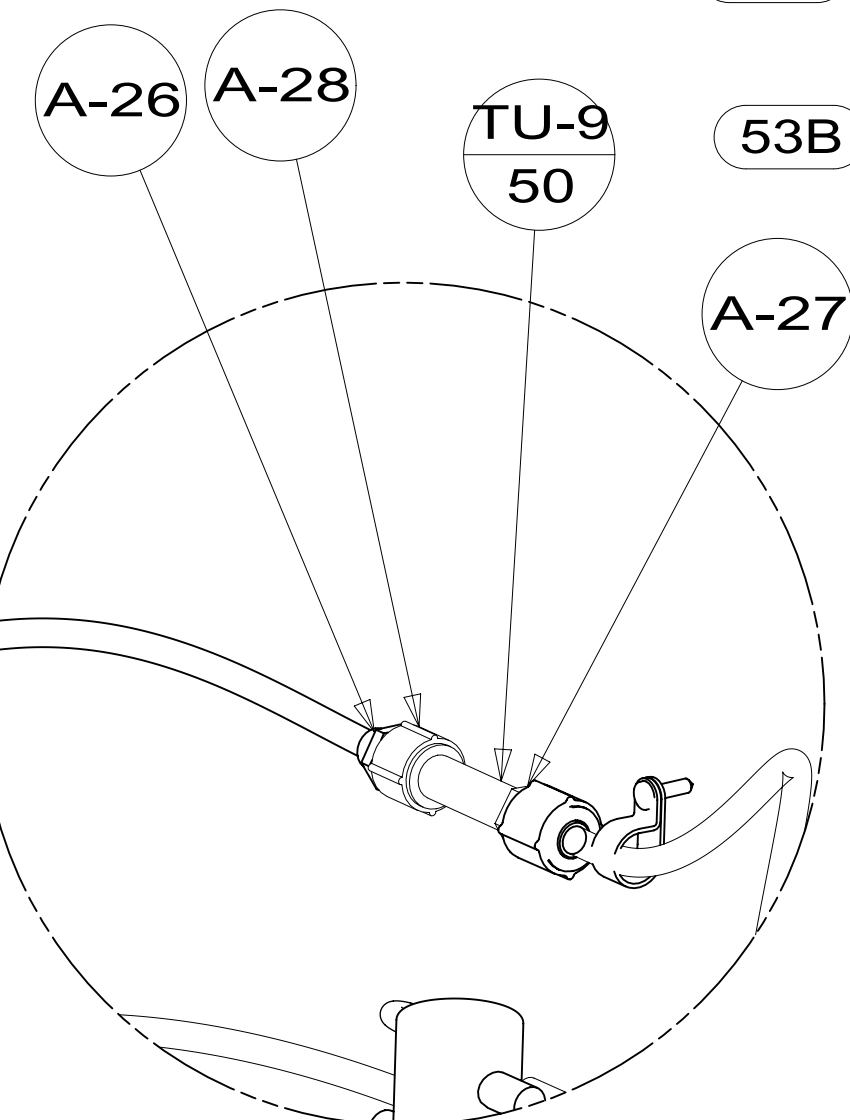
4 V-6

53B A-28

53B

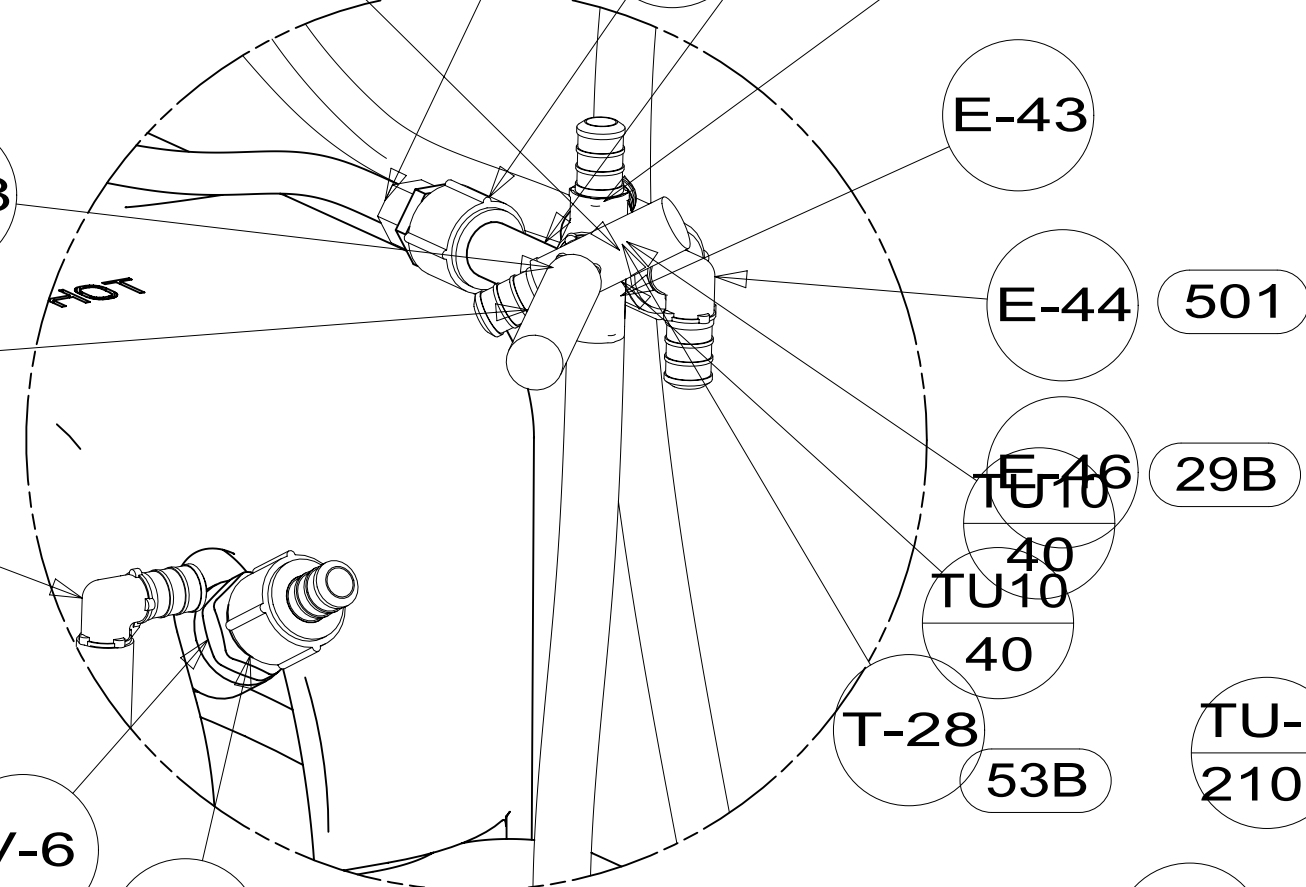
DETAIL BF

53B



DETAIL BC
(SHOWN W/OUT CABINETS)

29B & 144



E-43 29B

TU-9 40

TU10 40

T-28 53B

A-26

A-28

TU-9 40

T-29

TU-9 40

CLAMP
010495-04-000
SCREW
000G67-10-12U

TU-5 2100

V-24

TU-9 40

E-44

A-27

TU-9 40

TU-9 40

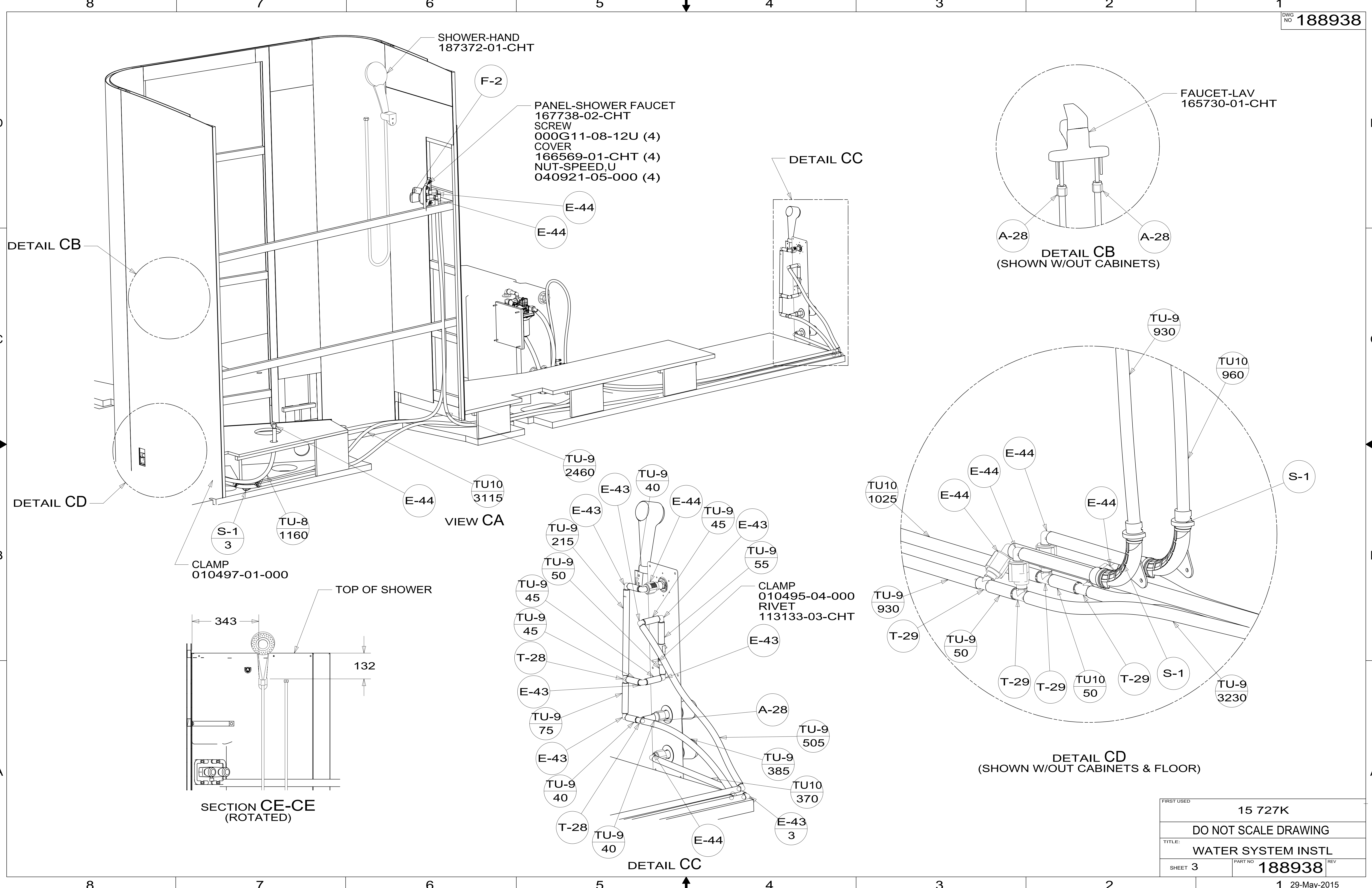
TU-9 40

DETAIL BC
(SHOWN W/OUT CABINETS)

29B & 79W

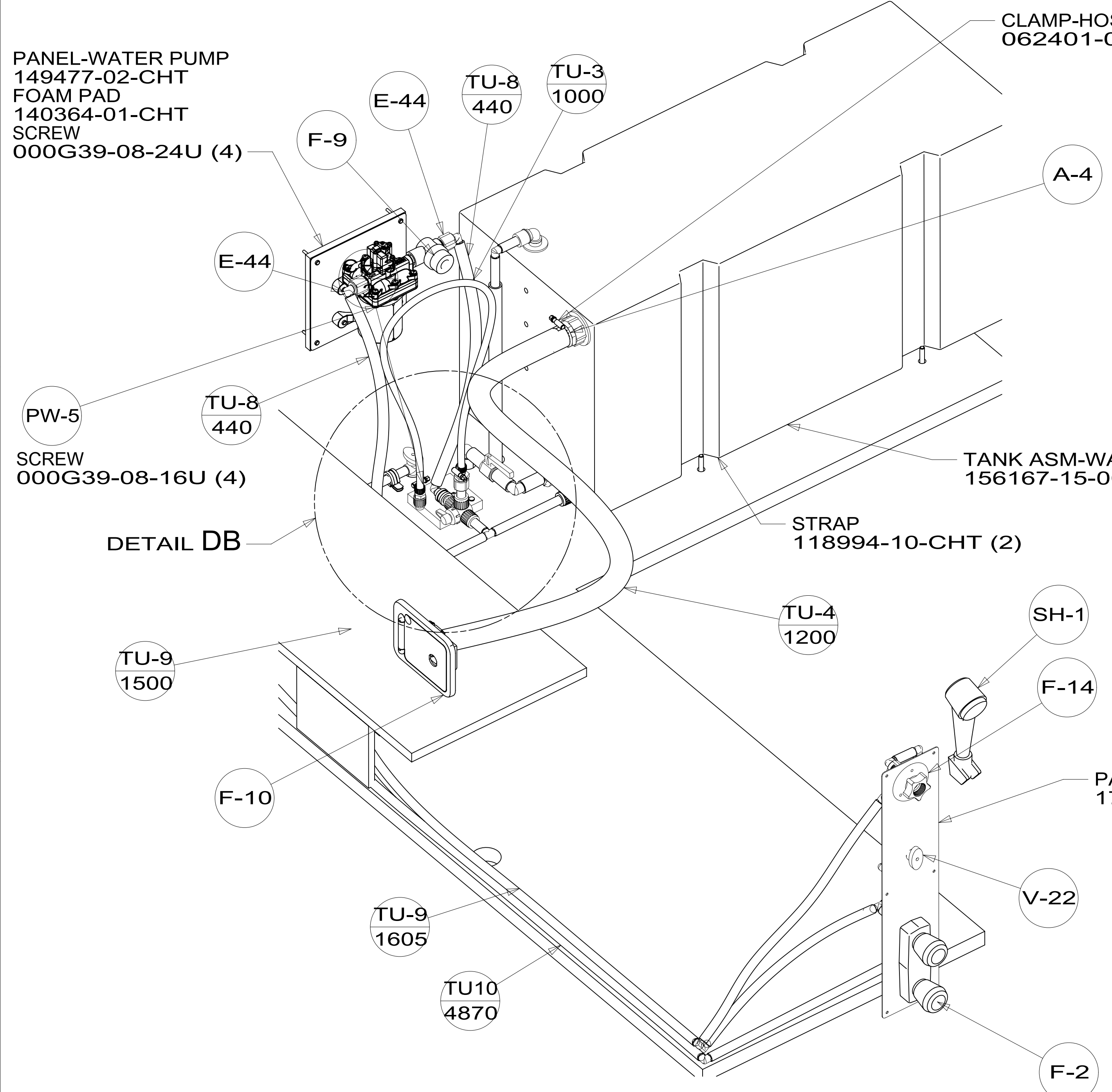
FIRST USED	15 727K
TITLE:	DO NOT SCALE DRAWING
	WATER SYSTEM INSTL
SHEET 2	PART NO 188938 REV
	1 29-May-2015

*188938

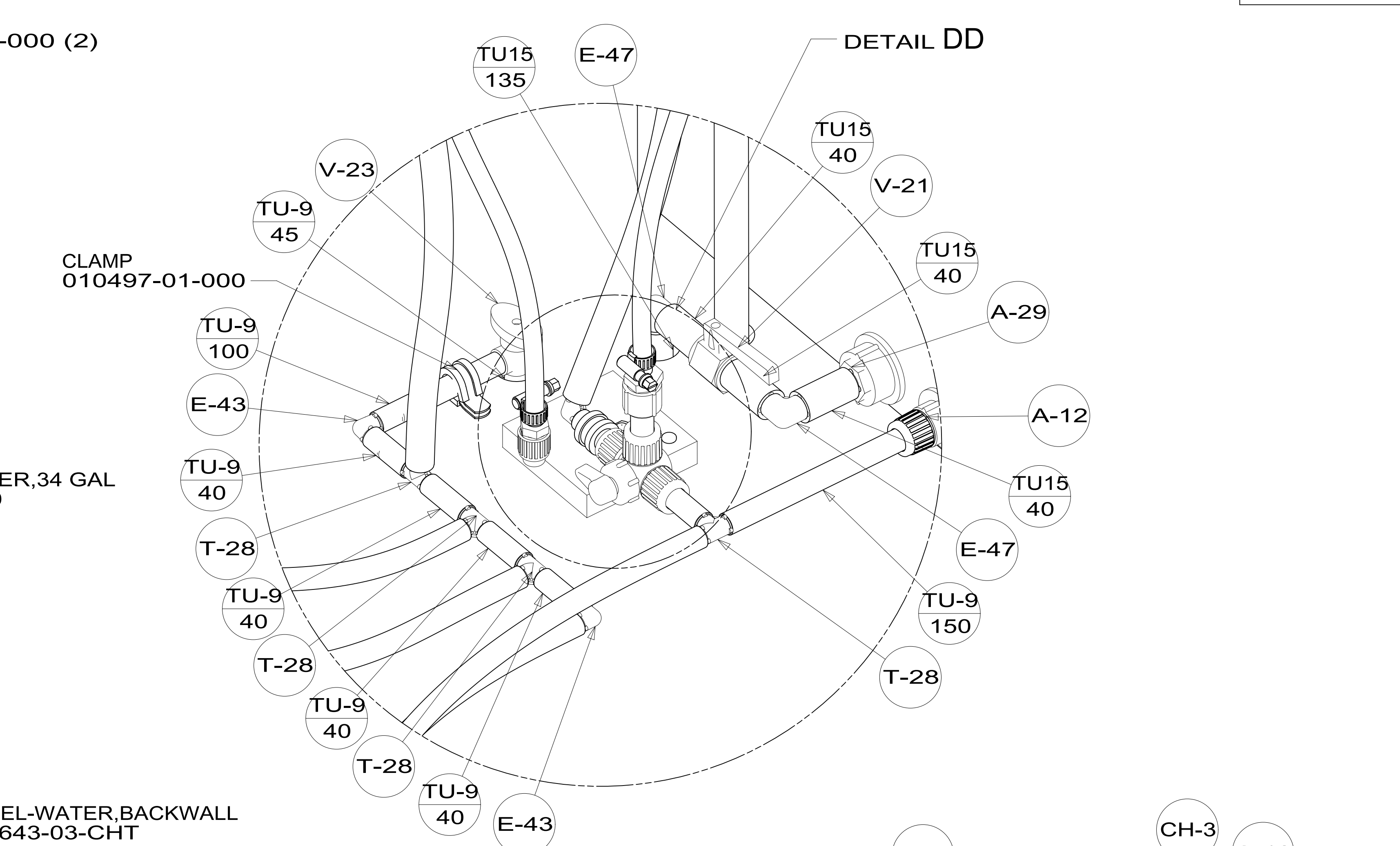


FIRST USED	15 727K
TITLE:	DO NOT SCALE DRAWING
	WATER SYSTEM INSTL
SHEET 3	PART NO 188938 REV
	1 29-May-2015

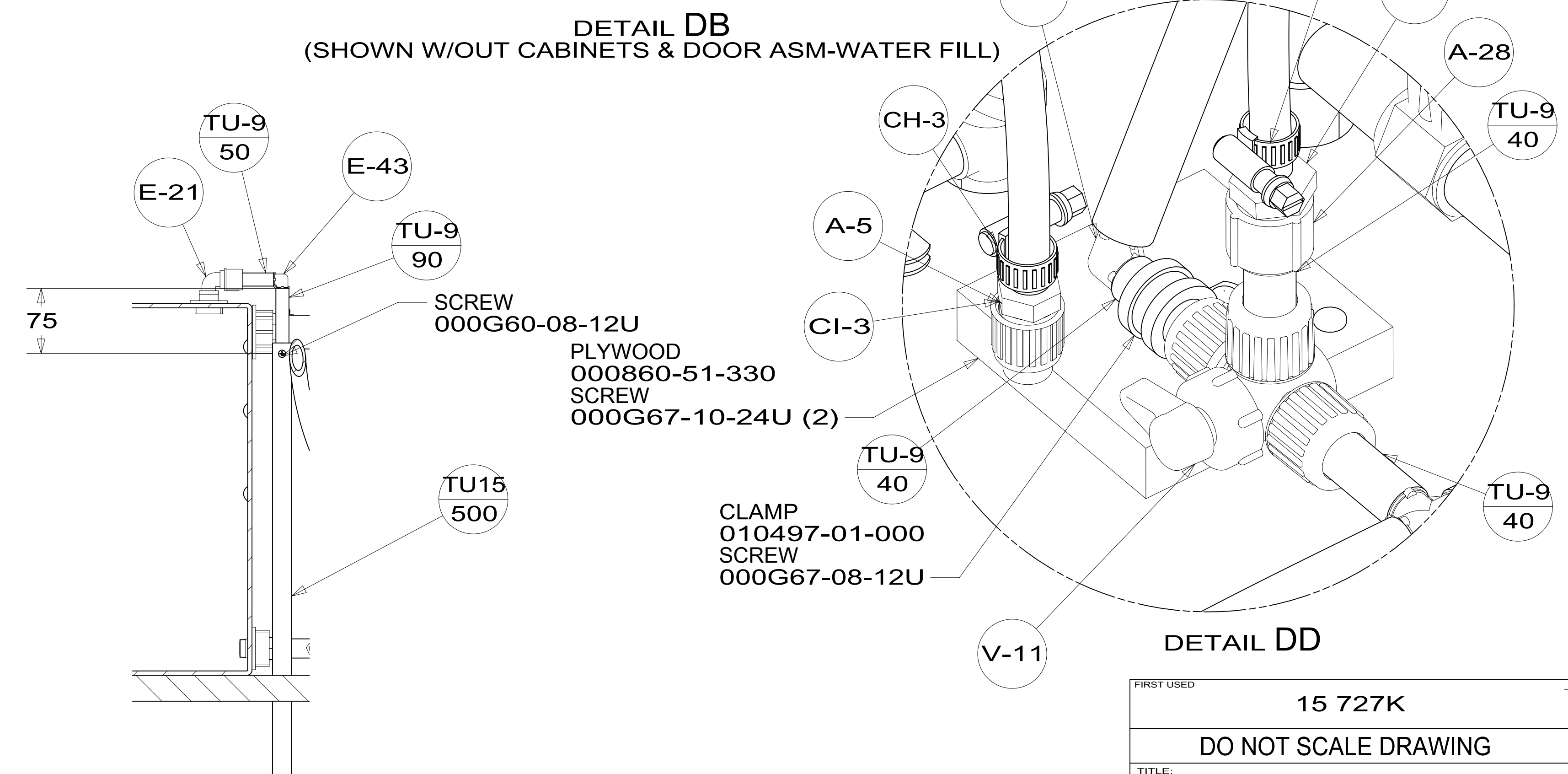
* 188938



VIEW DA



DETAIL DD



DETAIL DB
(SHOWN W/OUT CABINETS & DOOR ASM-WATER FILL)

DETAIL DD

SECTION DC-DC

FIRST USED	15 727K	
TITLE:	DO NOT SCALE DRAWING	
	WATER SYSTEM INSTL	
SHEET 4	PART NO 188938	REV

*188938