

- 1B1 CODES/STANDARDS-USA
- 265 CODES/STANDARDS-CSA/CMVSS
- 43E TOILET-PORCELAIN
- 1JD DRAINAGE SYSTEM-HEATED-W/O
- 23T DRAINAGE SYSTEM-HEATED

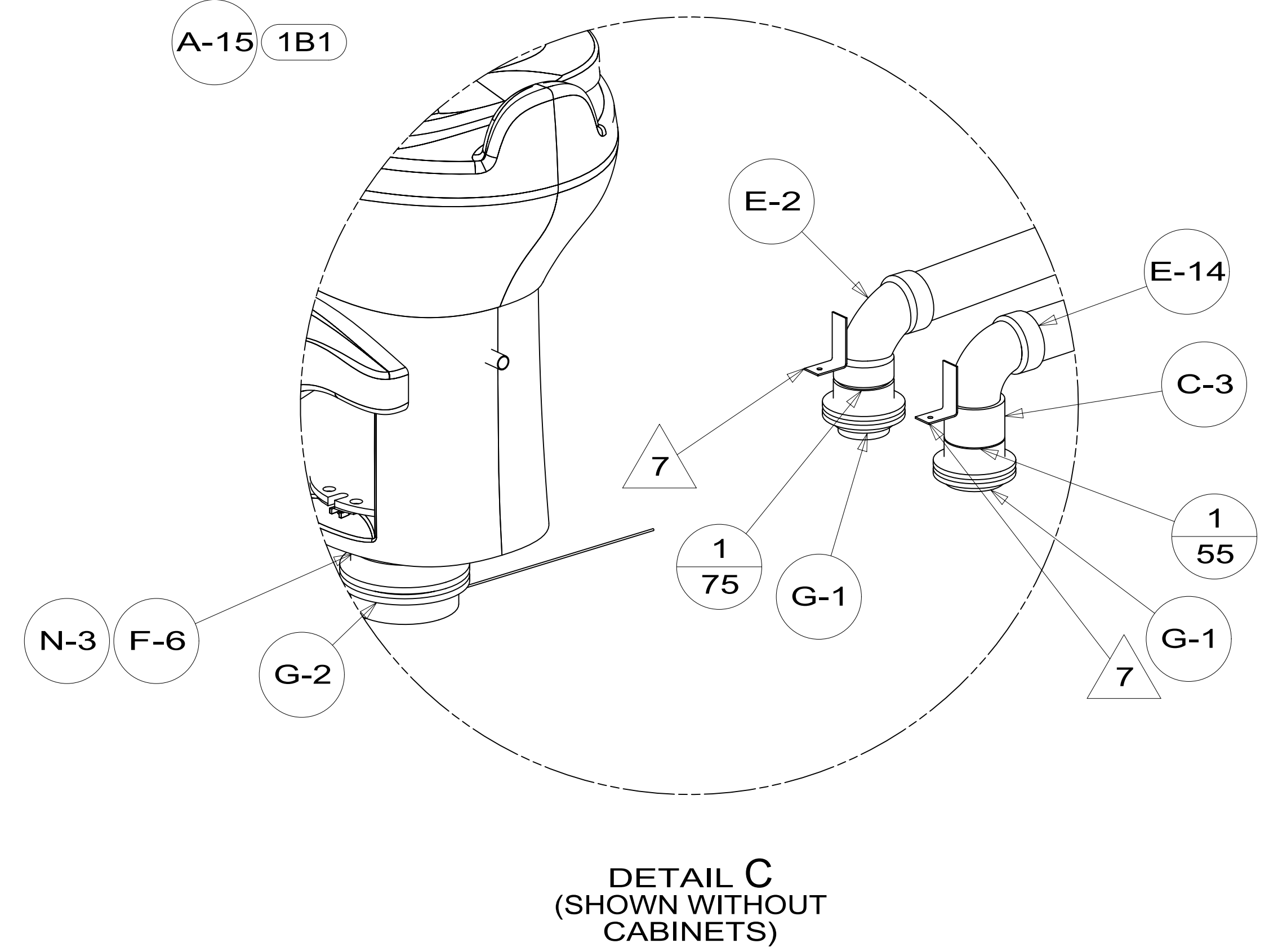
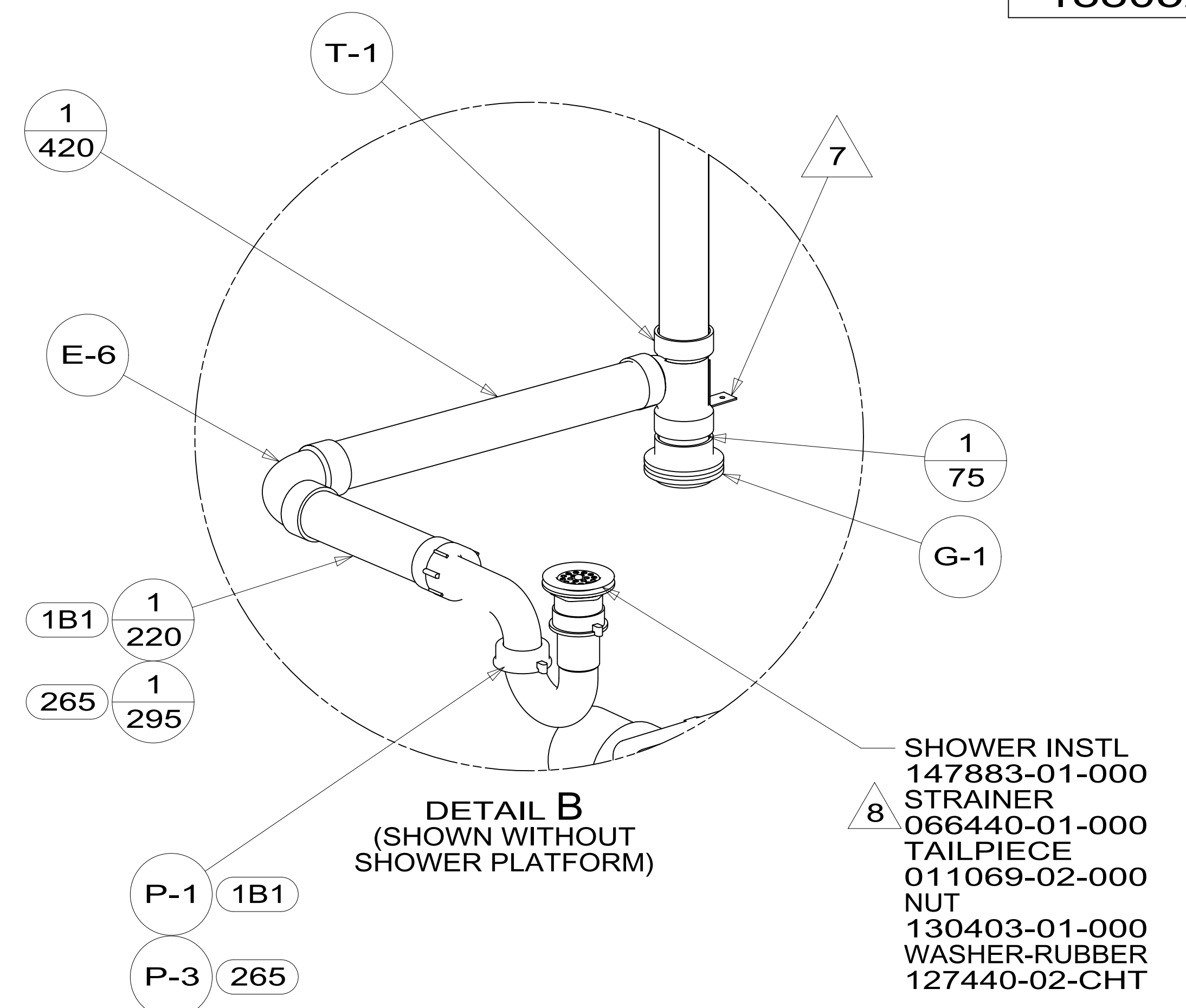
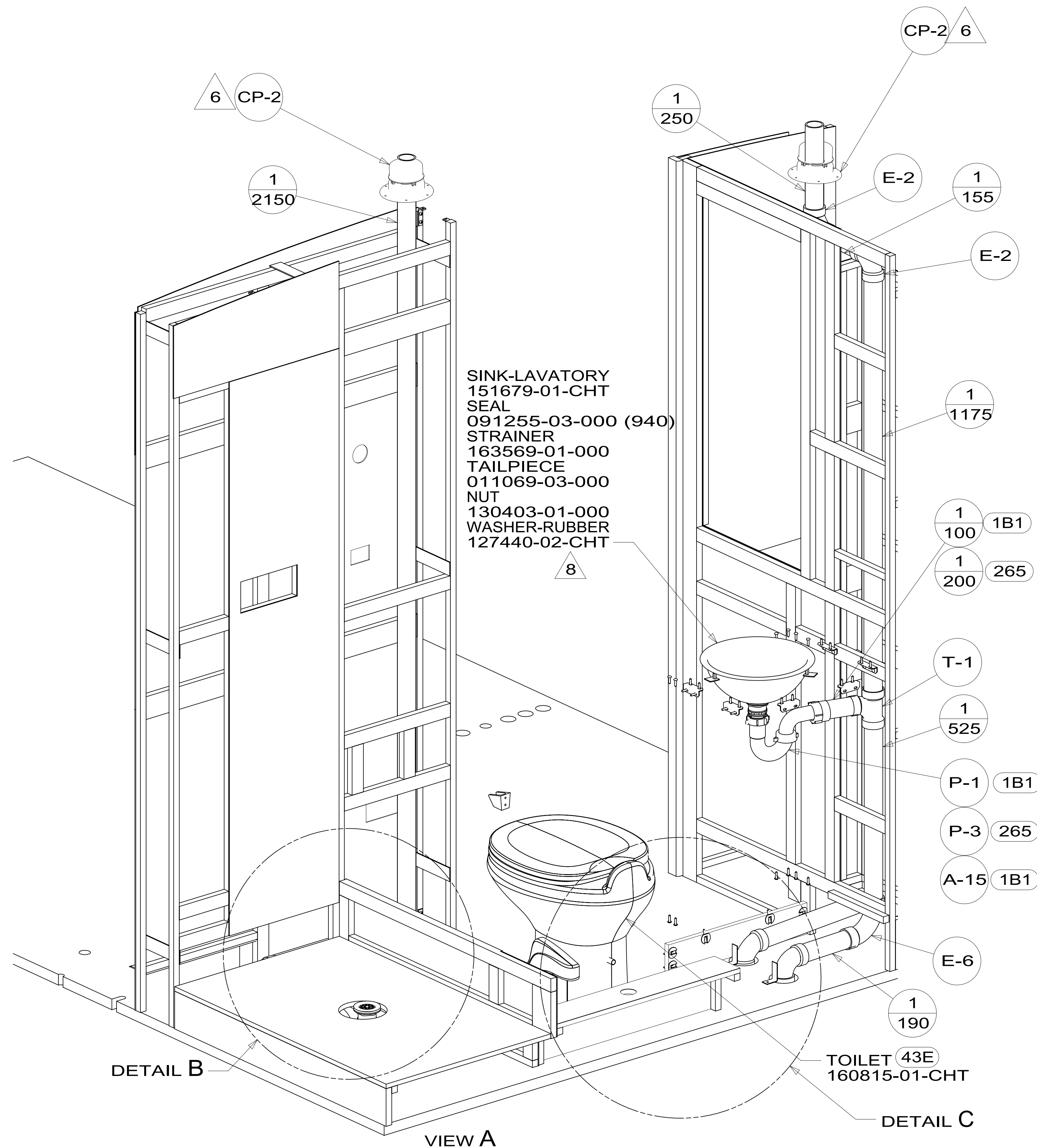
9. PREPARE THE SURFACE PER MANUFACTURERS INSTRUCTIONS. BEFORE APPLYING THE HEAT PADS.
8. USE SMOOTH PLUMBERS PUTTY 167459-01-000 TO SEAL STRAINER (.2 PER STRAINER).
7. SECURE VENT PIPE TO FLOOR WITH CLAMP 062401-02-000 (3), SCREW 000G67-10-12U (3), BRACKET 136878-01-CHT (3).
6. VENT PIPE MUST PROJECT 51 MIN AND 64 MAX ABOVE ROOF FOR PROPER FIT AND FUNCTION. ADD S-1 (116666-01-CHT SEAL-VENT PIPE) AROUND PIPE ON ROOF BEFORE VENT CAP IS INSTALLED.
5. SEAL AROUND SHOWER WITH SILICONE.
4. SECURE DRAINAGE PIPES TO CABINET USING WIRE TIES 108046-02-000 AND SCREW 000G67-10-12U AT INTERVALS OF NOT MORE THAN 4 FEET APART.
3. ALL PIPE AND FITTINGS TO BE ASSEMBLED WITH SOLVENT 004020-01-000 (USA), 004020-02-000 (CAN)
2. SLOPE OF TRAP ARM MUST BE 6 PER 305 mm.
1. SLOPE OF HORIZONTAL PIPING TO BE MINIMUM OF 3 PER 305 mm.

NOTES:

FOR DRAINAGE CALLOUTS SEE DWG NO 116229-01-000

<b>WINNEBAGO</b>		<small>COPYRIGHT 2014 WINNEBAGO INDUSTRIES, INC.</small>	
DFTR	ORIG. DATE		
CHKR	ALL DIMENSIONS ARE IN MILLIMETERS		
P.E.	MATERIAL:		
M.E.	FIRST USED		
DSNR	15 524M		
UNSPECIFIED TOLERANCES ARE:		THIRD ANGLE PROJECTION	
WHOLE DIM (X)	: 3		
ONE-PLACE (X.X)	: 1.5		
TWO-PLACE (X.XX)	: 0.50		
ANGLE	: 1°		
DO NOT SCALE DRAWING		REFER TO ES0018 FOR FASTENER TIGHTENING GUIDELINES	
TITLE: DRAINAGE SYSTEM INSTL			
SHEET 1 OF 4	PART NO	188052	REV
REF:	1 05-Nov-2015		

\*188052 \*A

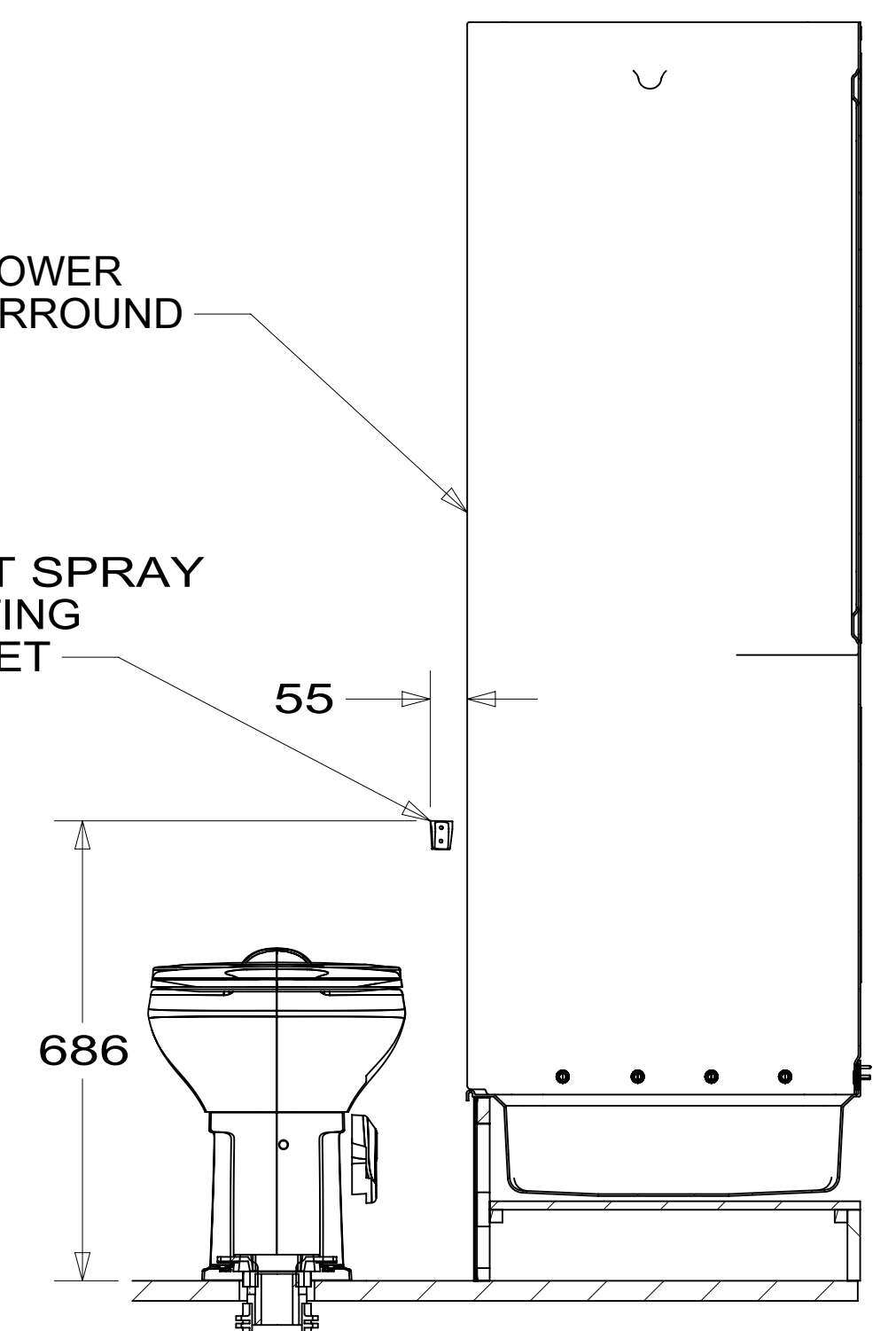


FIRST USED	15 524M	
TITLE:	DO NOT SCALE DRAWING	
SHEET 2	PART NO	188052
	REV	1
		05-Nov-2015

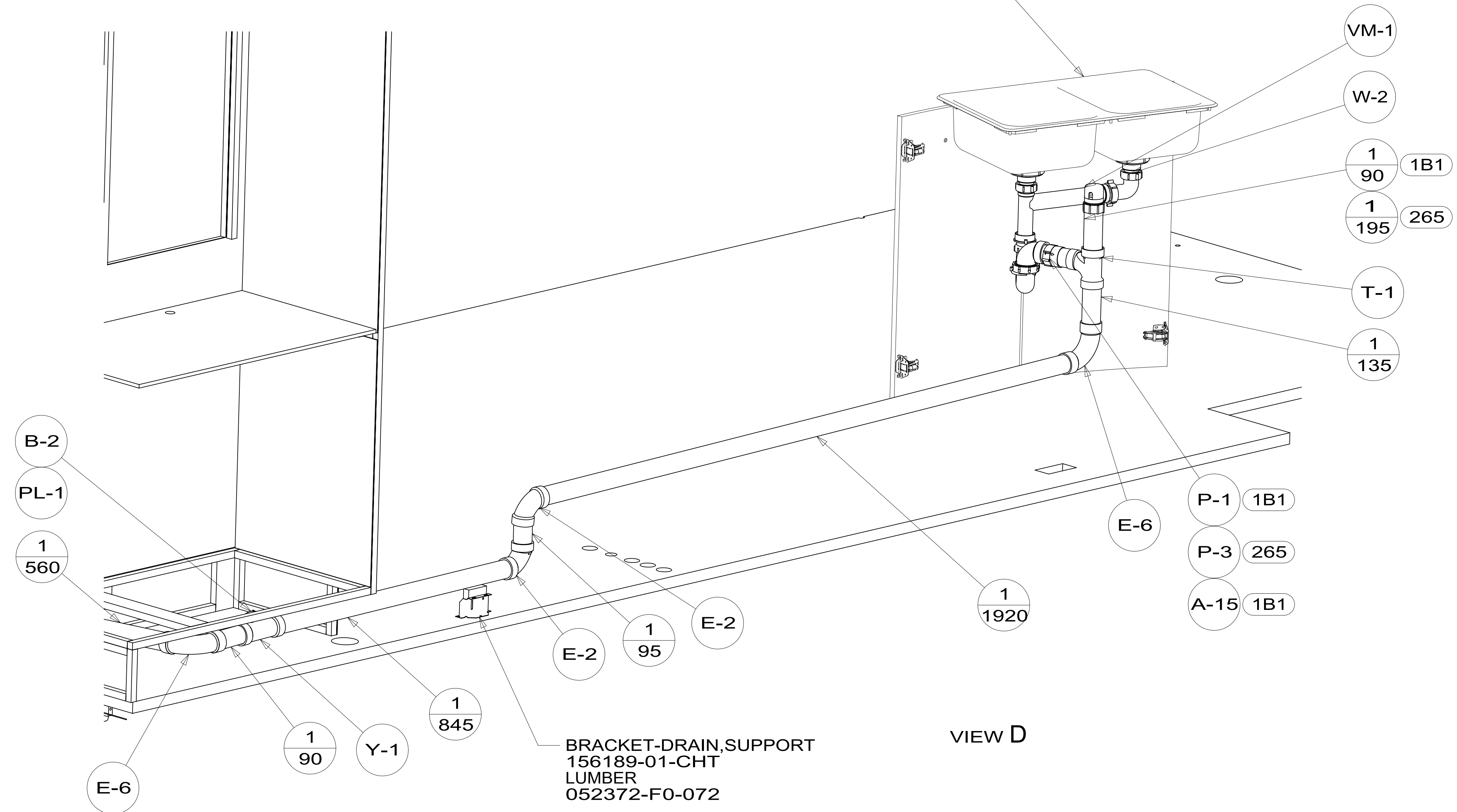
\*188052\*

8  
SINK-GALLEY, DBL, 15X25X5  
179864-01-CHT  
SEAL  
091255-03-000 (2130)  
STRAINER  
092303-01000 (2)

SHOWER SURROUND  
TOILET SPRAY MOUNTING BRACKET



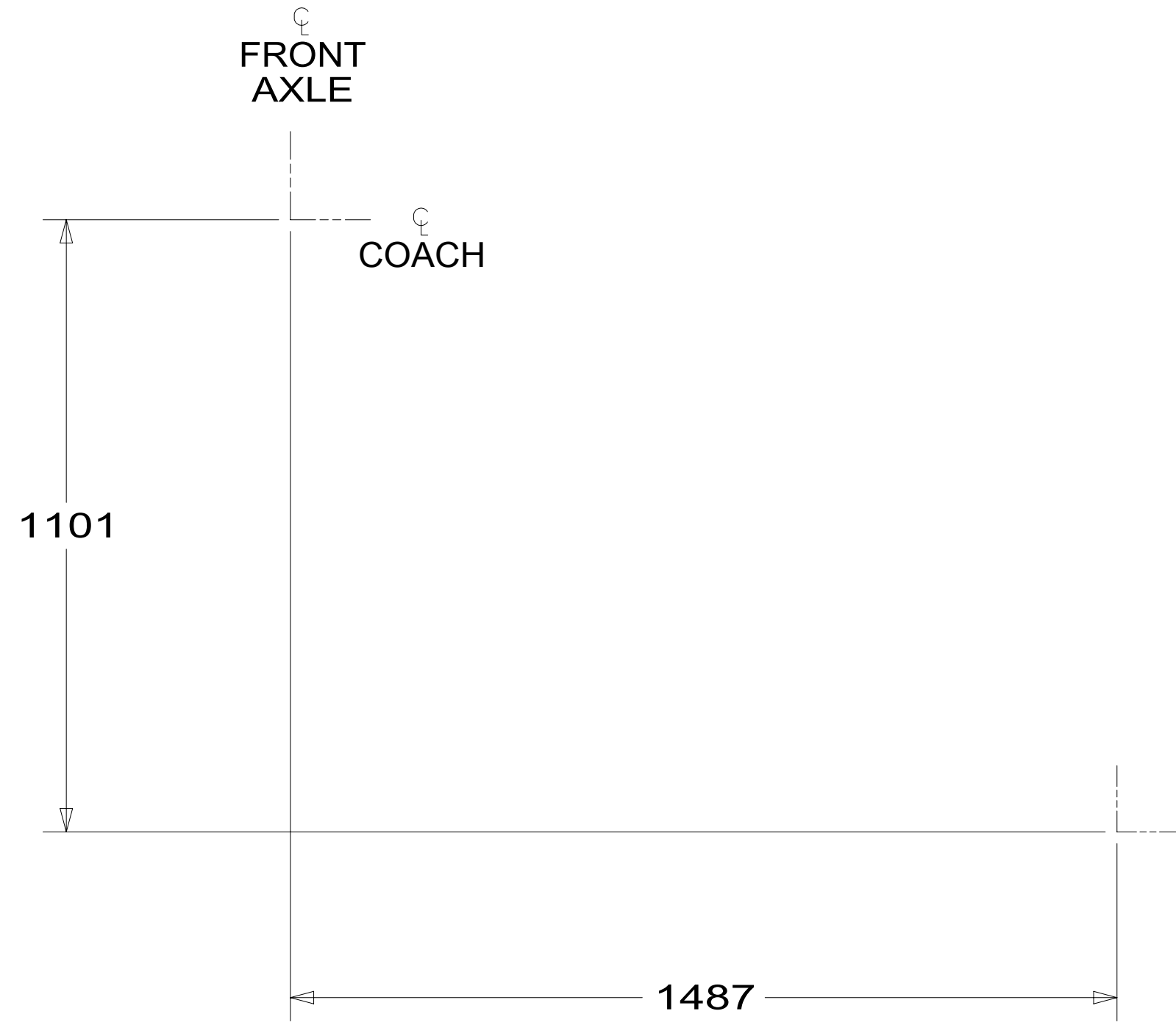
SECTION F-F  
(ROTATED)



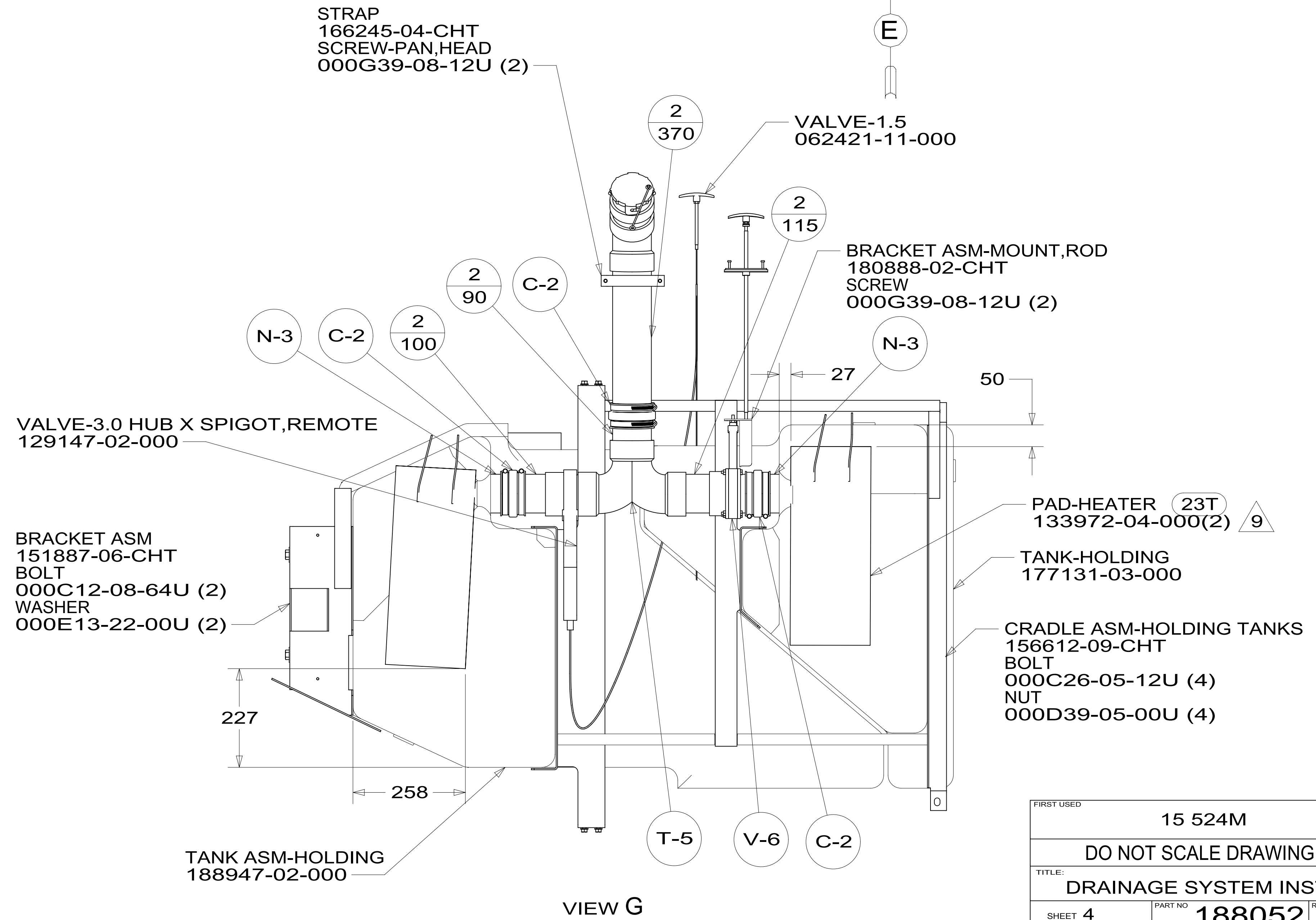
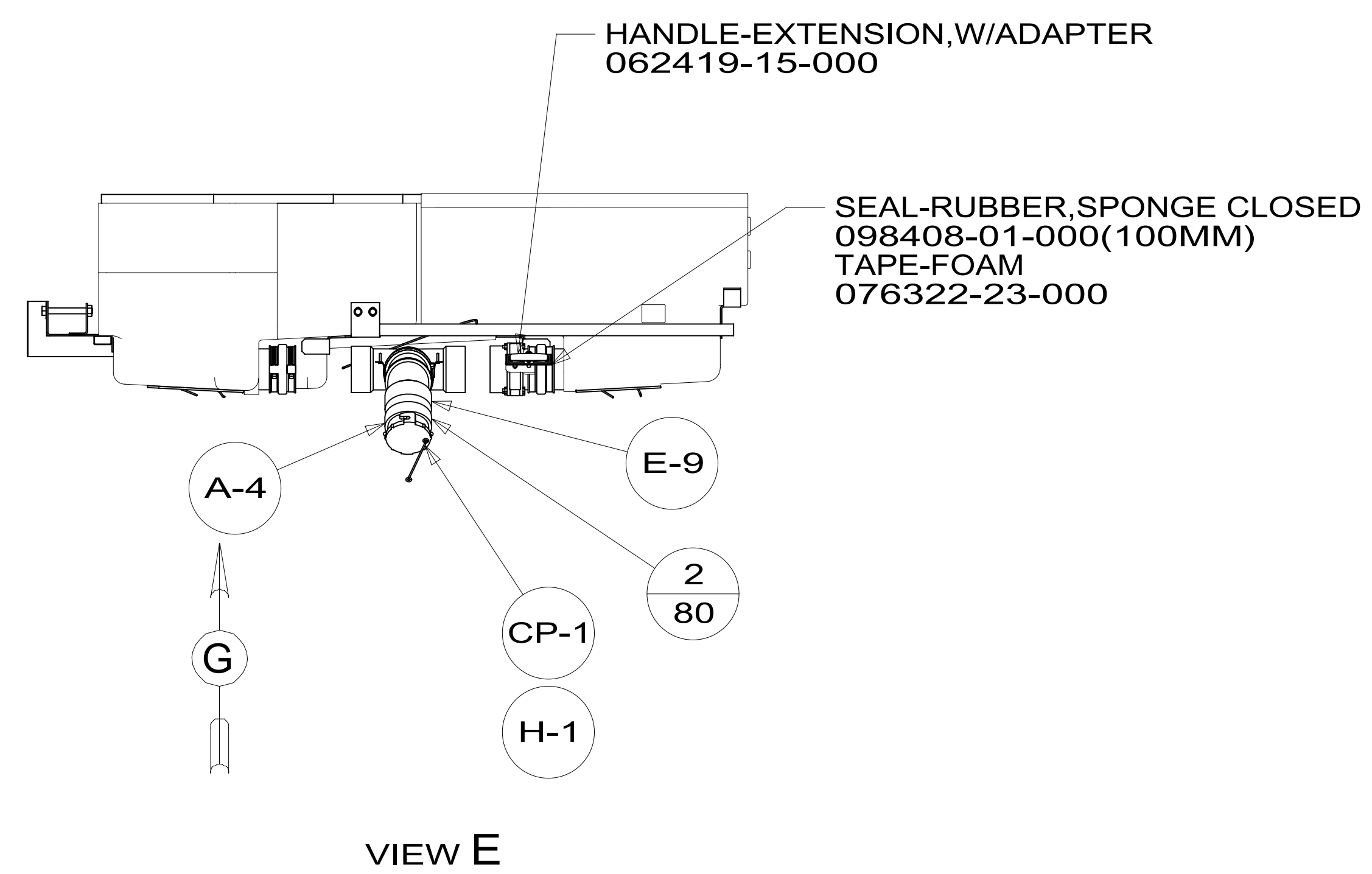
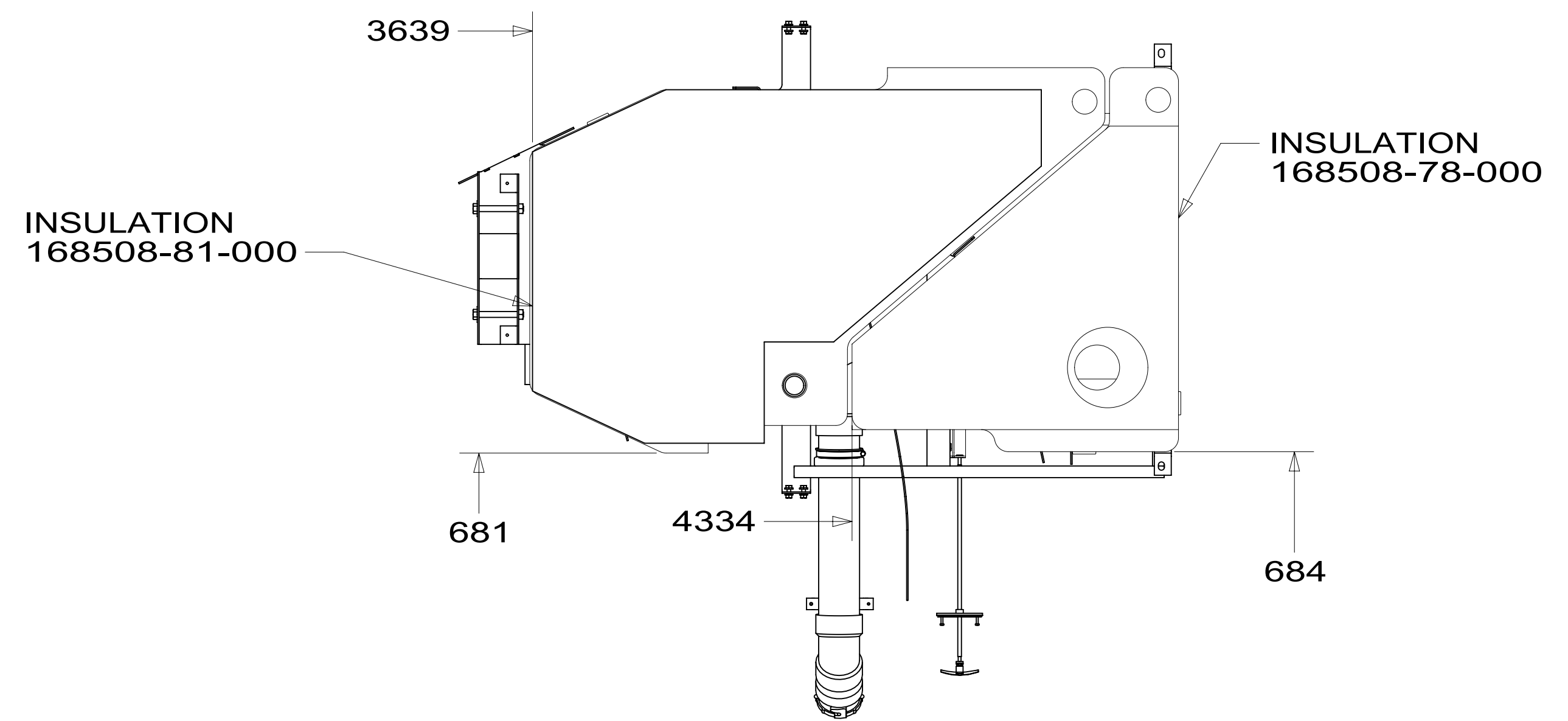
VIEW D

FIRST USED	15 524M
DO NOT SCALE DRAWING	
TITLE: DRAINAGE SYSTEM INSTL	
SHEET 3	PART NO 188052 REV
1 05-Nov-2015	

\*188052\*

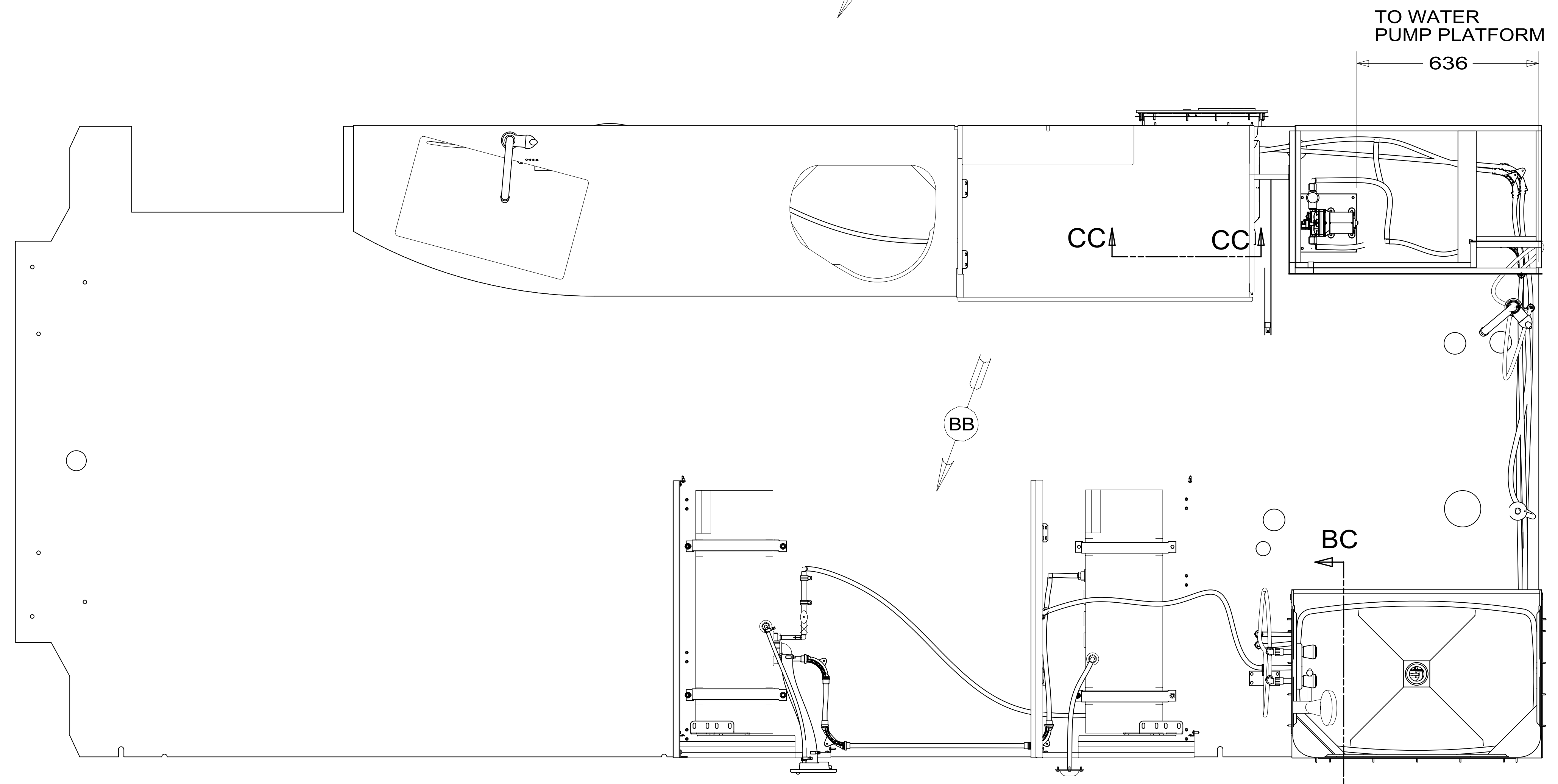


### VIEW SHOWING TANKS AND DRAINS



FIRST USED	15 524M
DO NOT SCALE DRAWING	
TITLE: DRAINAGE SYSTEM INSTL	
SHEET 4	PART NO 188052 REV
1 05-Nov-2015	

\*188052\*



- 29B WATER PURIFIER
- 501 WATER PURIFIER WITHOUT
- 53E WATER SYS WINTERIZATION PKG
- 53B WTR HTR-6GAL ELECTRIC/LP GAS
- 64R EXTERIOR WASH STATION

- 9 LAVATORY FAUCET SPOUT TO BE TURNED 180° SO CONTROLS ARE ON LEFT SIDE.
- 8. ALL CRIMP FITTINGS TO 1/2" PEX TUBING REQUIRE 1/2" CLAMP 140171-03-000.
- 7. ALL CRIMP FITTINGS TO 5/8" PEX TUBING REQUIRE 5/8" CLAMP 140171-04-000.
- 6 ADD TEFLON TAPE 010405-03-000.
- 5 ADD TEFLON TAPE 010405-02-000.
- 4 ADD TEFLON TAPE 010405-01-000.
- 3. ALL TUBING TO BE SECURED AT 1200 INTERVALS MAXIMUM WITH CLAMP 010495-01-000 AND SCREW 000G67-10-12U OR EQUIVALENT.
- 2. TUBING TO BE INSTALLED WITH SUFFICIENT SLOPE TO PROVIDE DRAINAGE TO NEAREST VALVE.
- 1. PLASTIC FITTINGS TO BE SEALED WITH SEALANT 084456-01-000.

- 13 INSTALL BETWEEN MOUNTING PLATE AND RETAINING NUTS.
- 12 INSTALL CONNECTOR WITH TAPERED END AWAY FROM FAUCET.
- 11 VENT TUBE MUST BE PROJECTED 6 TO 15MM FROM SIDEWALL FOR PROPER FIT AND FUNCTION. SEAL TUBE IN PLACE.
- 10 TURN FAUCET APPROXIMATELY 15° SO THAT THE HANDLE MISSES THE WINDOW TREATMENTS.

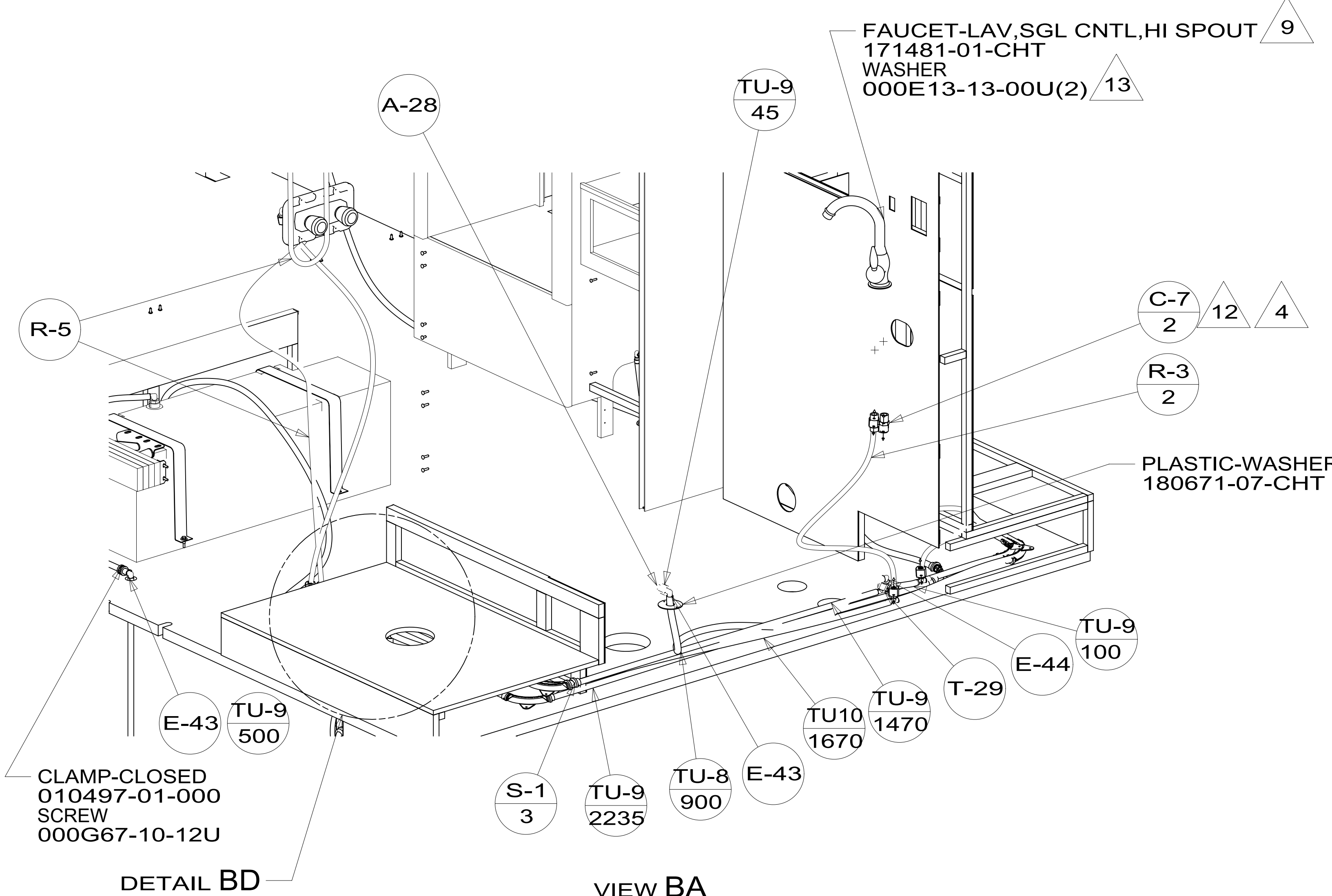
FOR WATER CALLOUTS SEE DWG NO 116230-01-000

		COPYRIGHT 2014 WINNEBAGO INDUSTRIES, INC.
DFT-ORIG	ORIG. DATE	
CHKR	ALL DIMENSIONS ARE IN MILLIMETERS	
P.E.		
M.E.	FIRST USED	
DSNR	15 524M	
UNSPECIFIED TOLERANCES ARE:		
WHOLE DIM (X)	: 3	
ONE-PLACE (X.X)	: 1.5	
TWO-PLACE (X.XX)	: 0.50	
ANGLE	: 1°	
THIRD ANGLE PROJECTION		
DO NOT SCALE DRAWING	REFER TO ES0018 FOR FASTENER TIGHTENING GUIDELINES	
TITLE: WATER SYSTEM INSTL		
SHEET 1 OF 5	PART NO 188059	REV
REF:	1 12-Oct-2015	

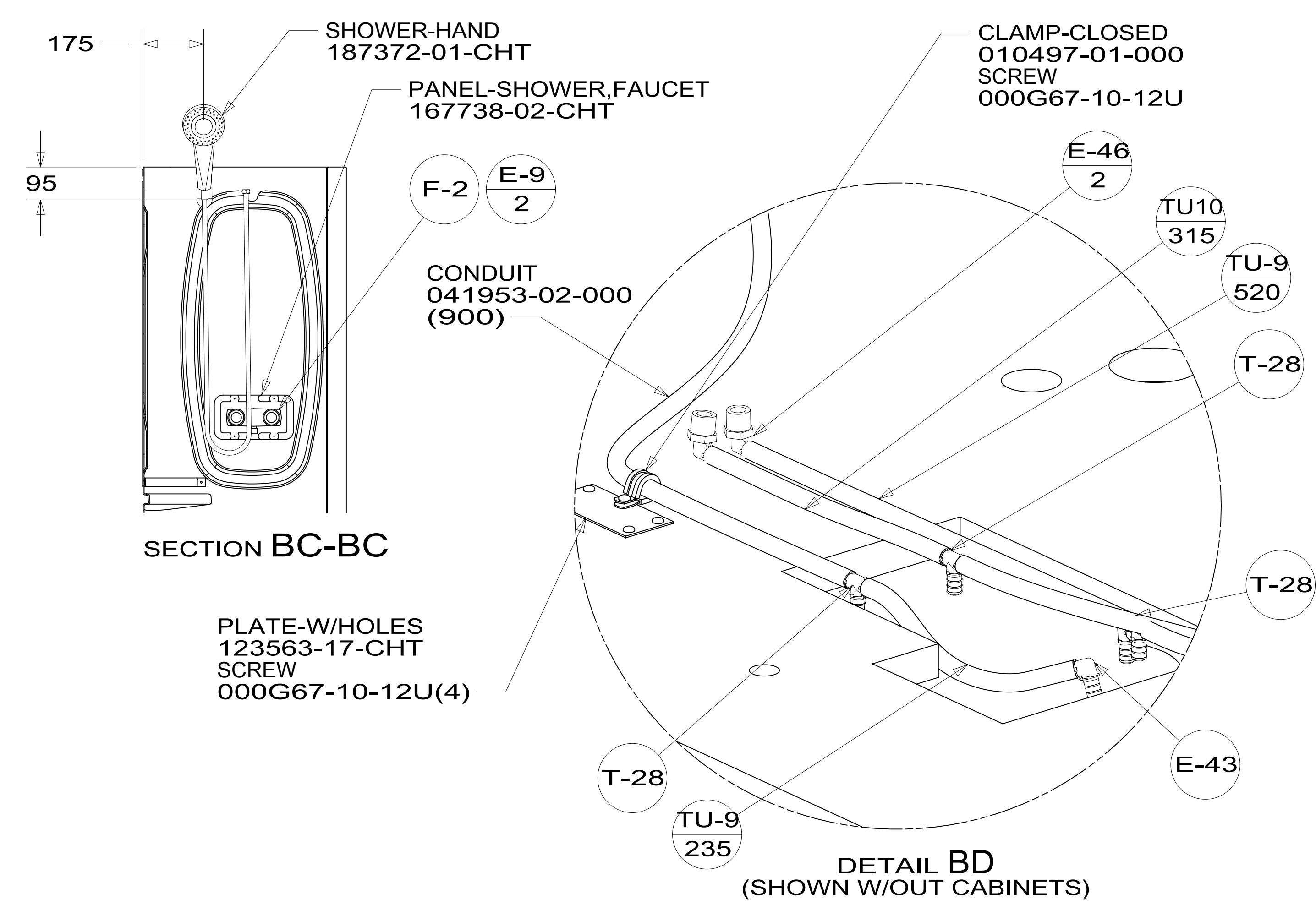
NOTES:

\*188059\*



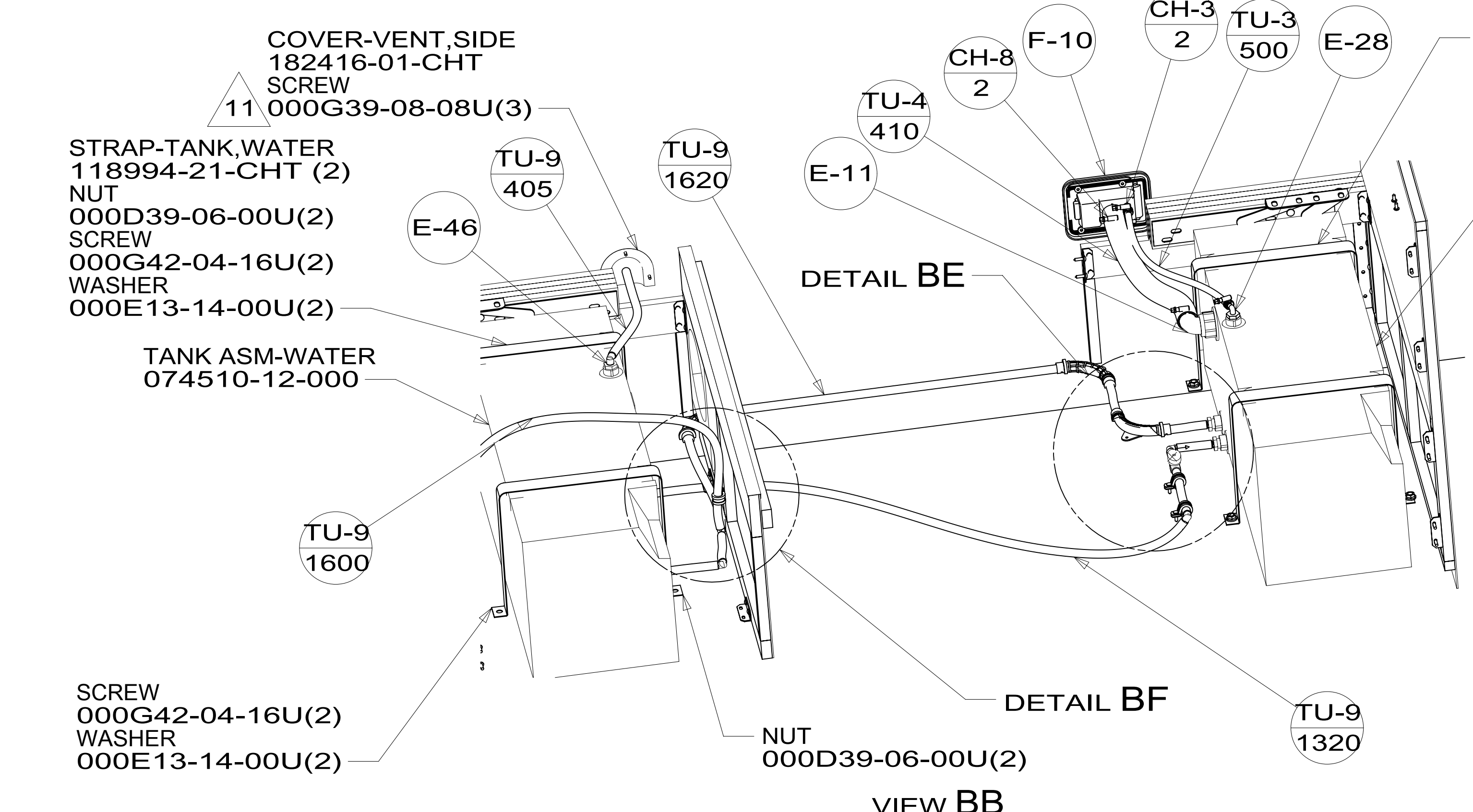


VIEW BA

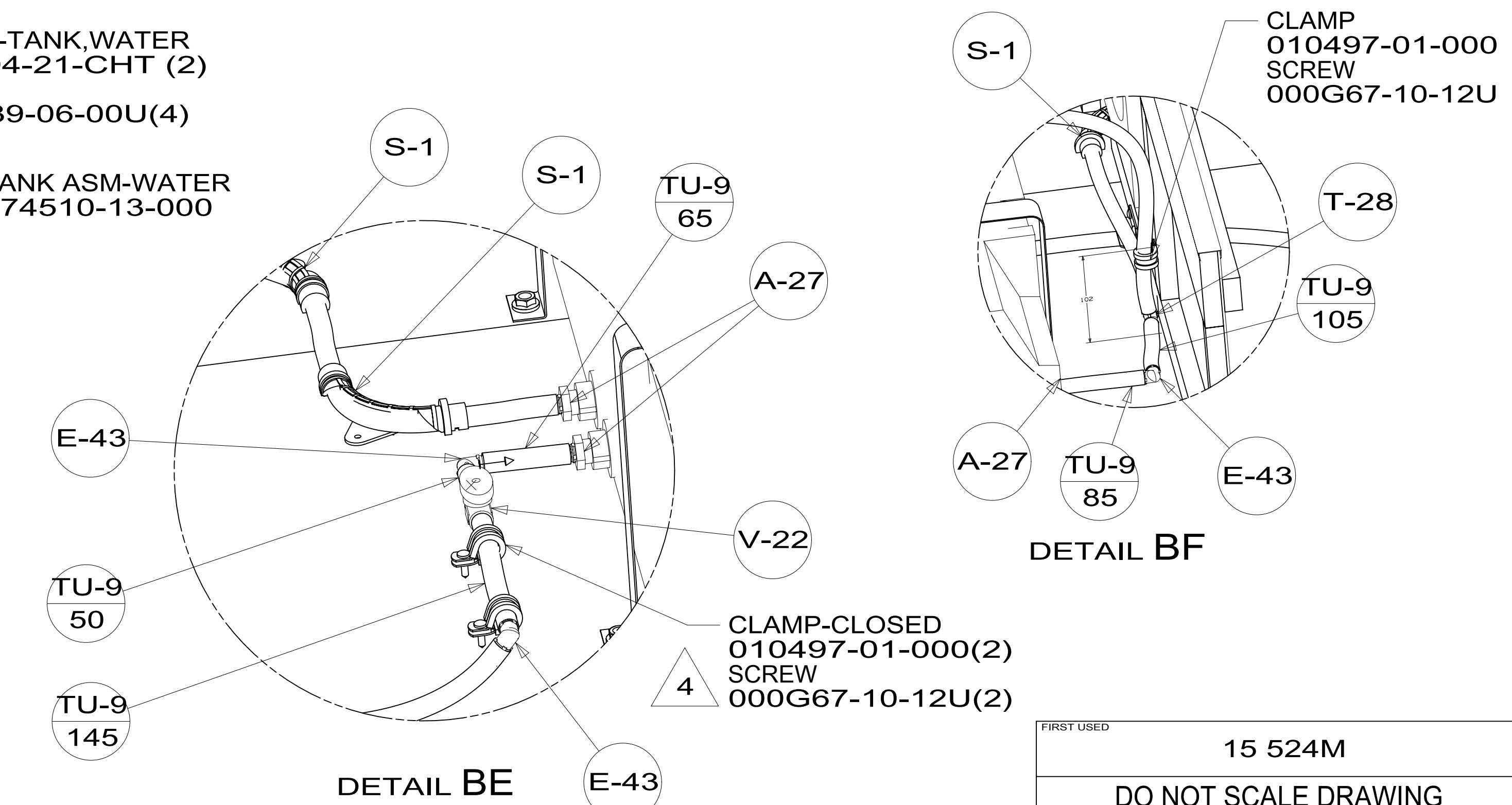


SECTION BC-BC

DETAIL BD  
(SHOWN W/OUT CABINETS)



VIEW BB



DETAIL BE

DETAIL BF

FIRST USED	15 524M	
TITLE:	DO NOT SCALE DRAWING	
TITLE:	WATER SYSTEM INSTL	
SHEET 2	PART NO	188059
	REV	
		12-Oct-2015

\*188059\*

FAUCET-GALLEY  
171482-02-CHT  
WASHER  
000E13-13-00U(2)

FILTER  
160946-03-000  
SCREW  
000G67-10-12U(2)

DETAIL CD

DETAIL CD

VIEW CA

SECTION CC-CC

DETAIL CB  
(SHOWN W/OUT CABINETS)

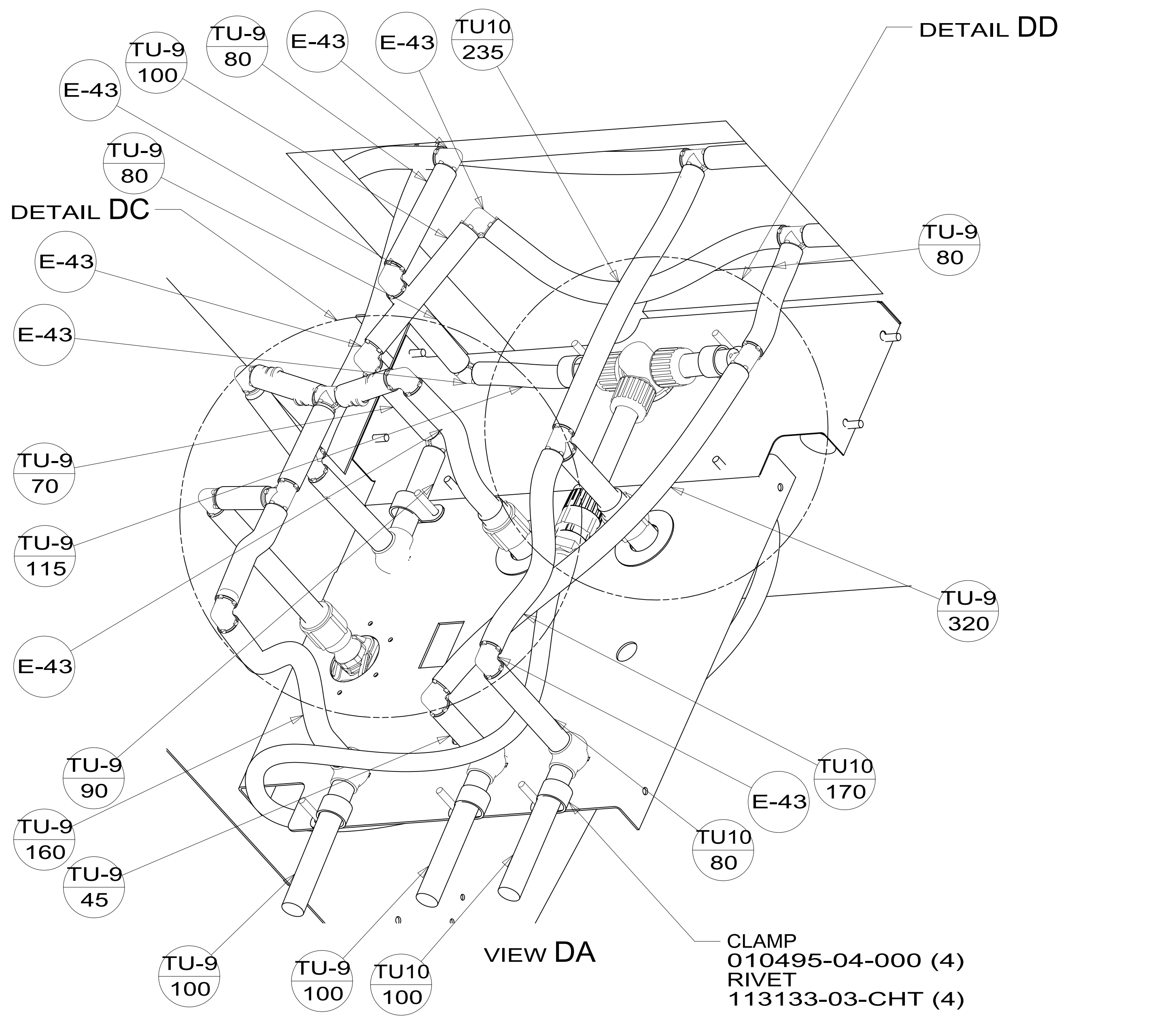
WATER HEATER INSTL-6 GAL 53B  
186899-03-000  
CABLE  
076767-03-000  
SCREW  
000G11-06-08U (2)

PANEL-WATER PUMP  
149477-08-CHT  
FOAM  
140364-01-CHT  
SCREW  
000G39-08-24U (4)

SCREW  
000G39-08-16U (4)

FIRST USED	15 524M	
TITLE:	DO NOT SCALE DRAWING	
SHEET 3	PART NO	188059
	REV	1
		12-Oct-2015

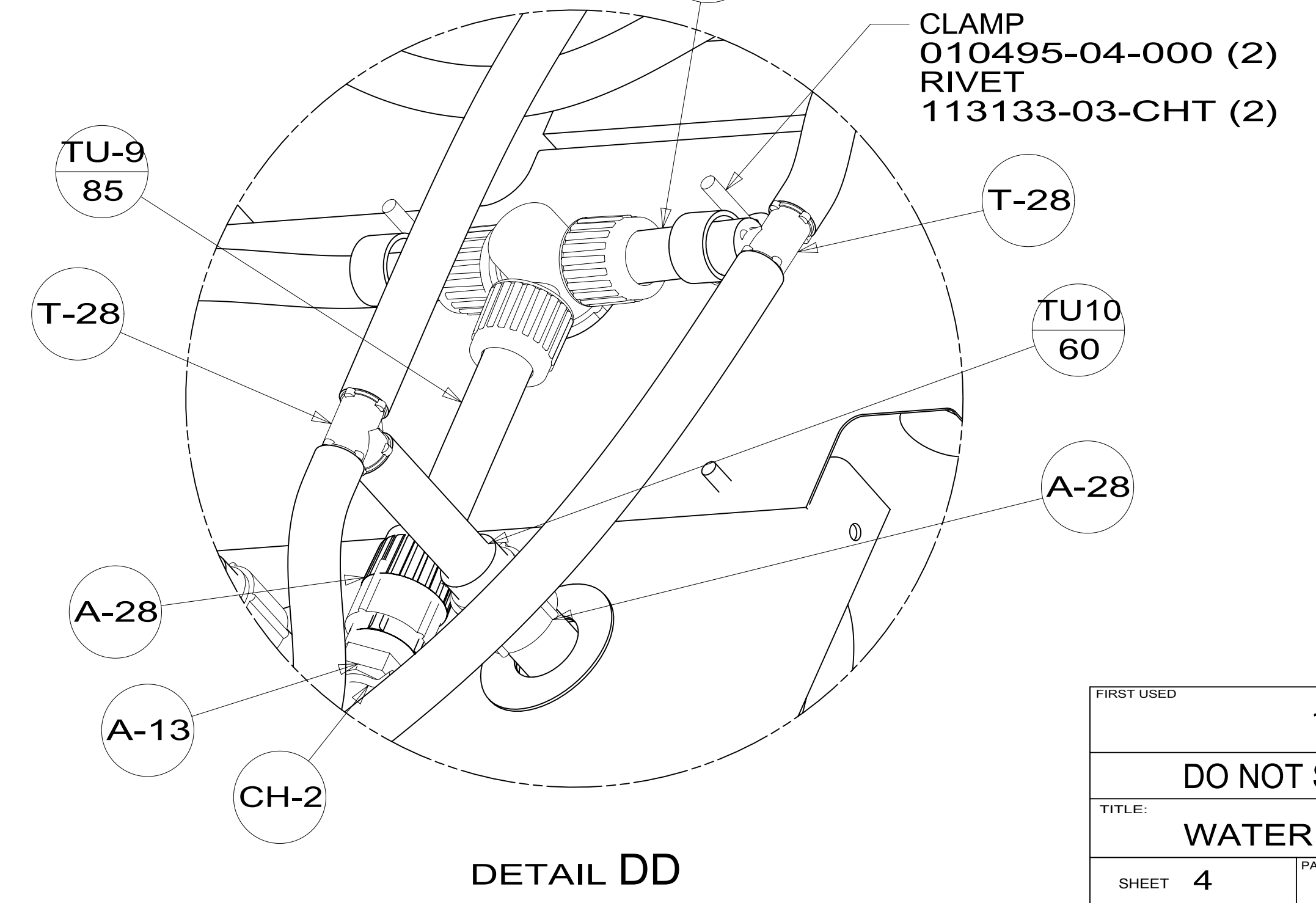
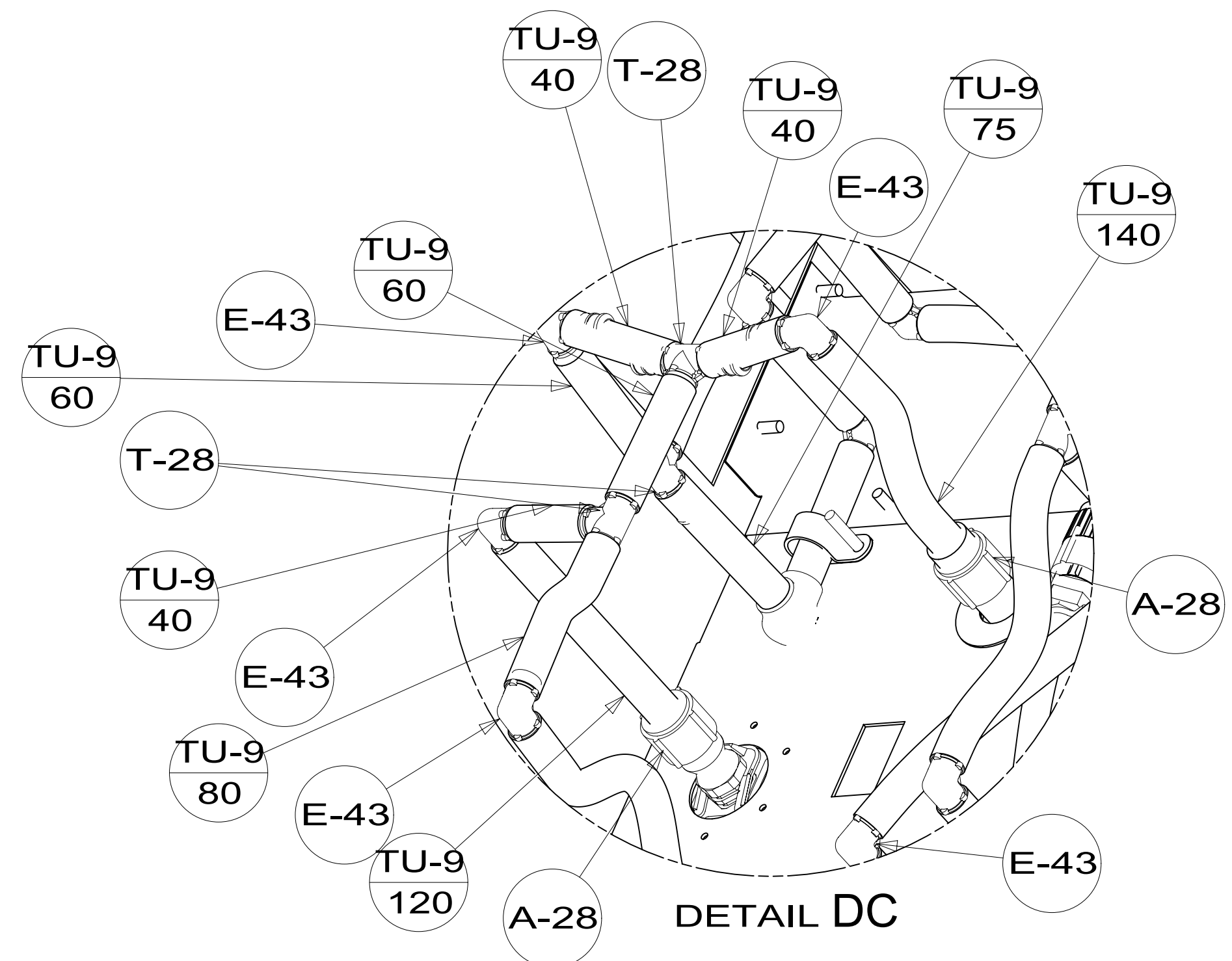
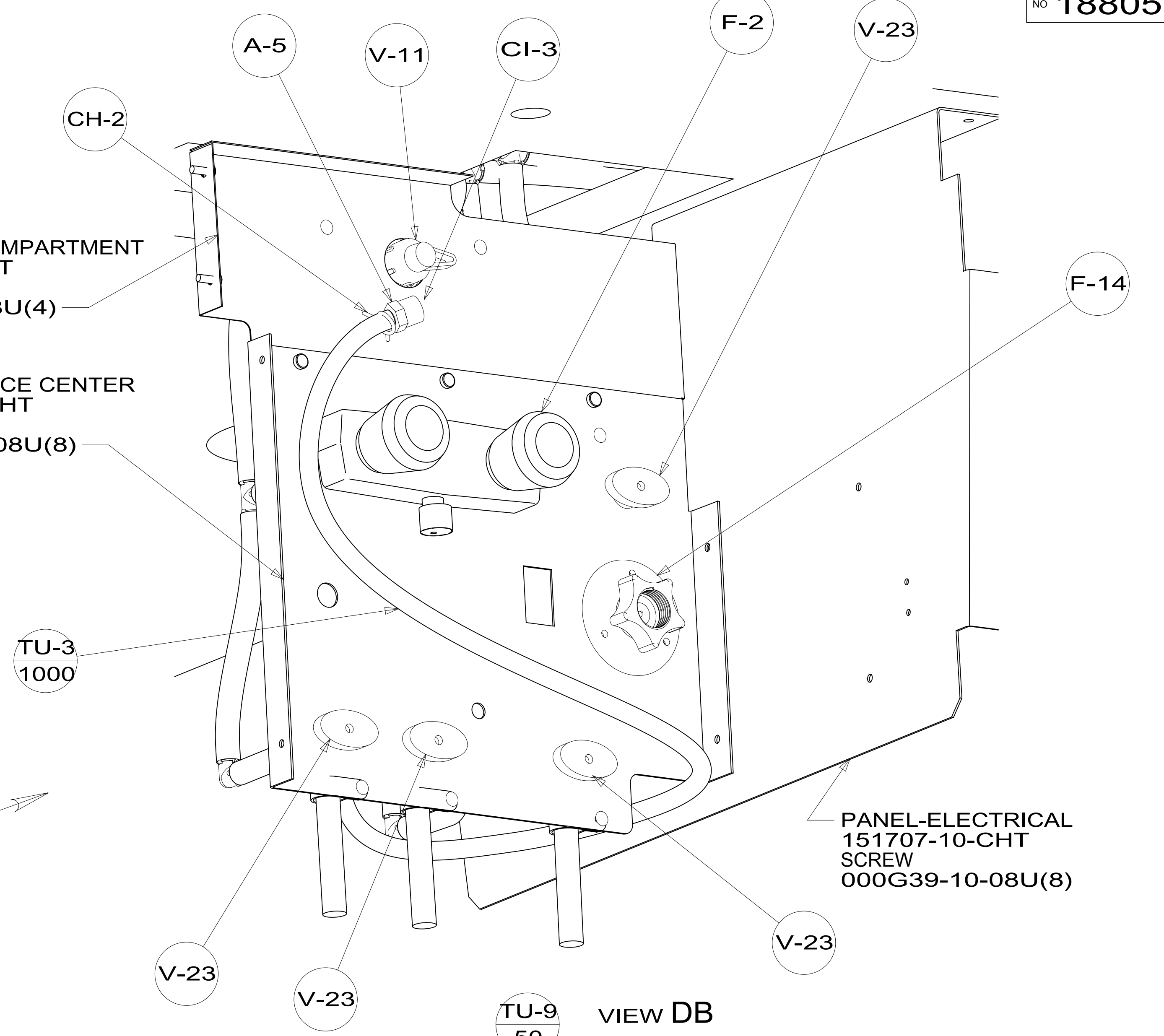
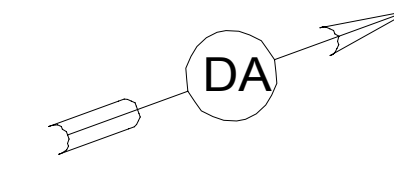
\*188059\*



PANEL-SIDE COMPARTMENT  
170356-16-CHT  
SCREW  
000G39-10-08U(4)

PANEL-SERVICE CENTER  
166877-13-CHT  
SCREW  
000G39-10-08U(8)

PANEL-ELECTRICAL  
151707-10-CHT  
SCREW  
000G39-10-08U(8)



FIRST USED	15 524M	
TITLE:	DO NOT SCALE DRAWING	
	WATER SYSTEM INSTL	
SHEET 4	PART NO 188059	REV
		1 12-Oct-2015

\*188059\*