

FRONT OF COACH

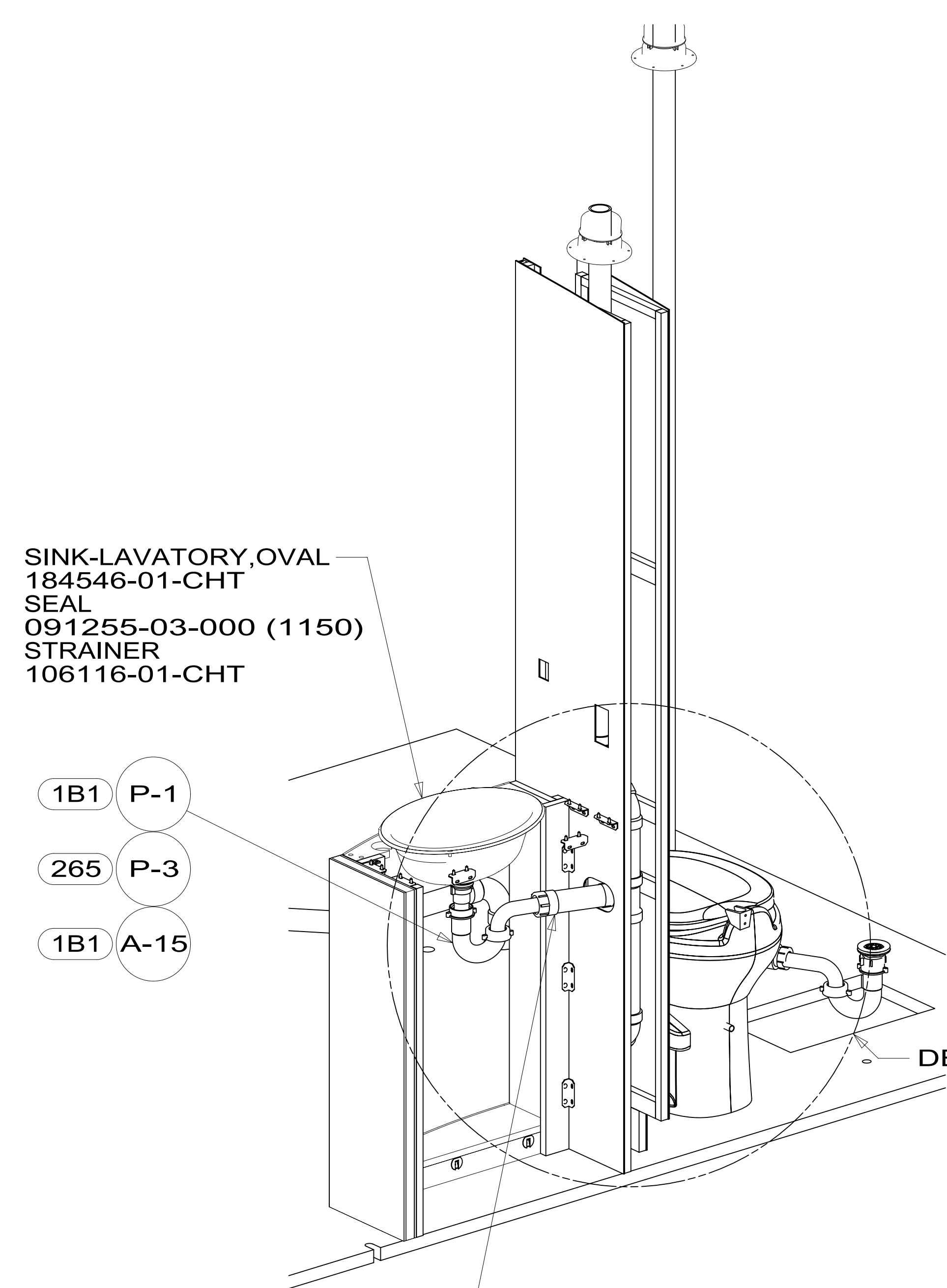
- 1B1 CODES/STANDARDS USA
- 265 CODES/STANDARDS-CSA/CMVSS
- 23T DRAINAGE SYSTEM-HEATED
- 1JD DRAINAGE SYSTEM-HEATED-W/O
- 43E TOILET PORCELAIN-ROUND

- NOTES:
- 8 PREP THE SURFACE PER MANUFACTURERS INSTRUCTIONS BEFORE APPLYING THE HEATING PAD.
 - 7 USE SMOOTH PLUMBERS PUTTY 167459-01-000 TO SEAL STRAINER (.2 PER STAINER)
 - 6 VENT PIPE MUST PROJECT 51 MIN AND 64 MAX ABOVE ROOF FOR PROPER FIT AND FUNCTION.
 - 5 SEAL AROUND SHOWER WITH SILICONE.
 - 4 SECURE VENT PIPE TO FLOOR WITH CLAMP 062401-02-000 (2), SCREW 000G67-10-12U (2), BRACKET 136878-01-CHT (2).
 - 3 ALL PIPE AND FITTINGS TO BE ASSEMBLED WITH SOLVENT 004020-01-000 (USA), 004020-02-000 (CAN)
 - 2 SLOPE OF TRAP ARM MUST BE 6 PER 305 mm.
 - 1 SLOPE OF HORIZONTAL PIPING TO BE MIN 3 PER 305 mm.

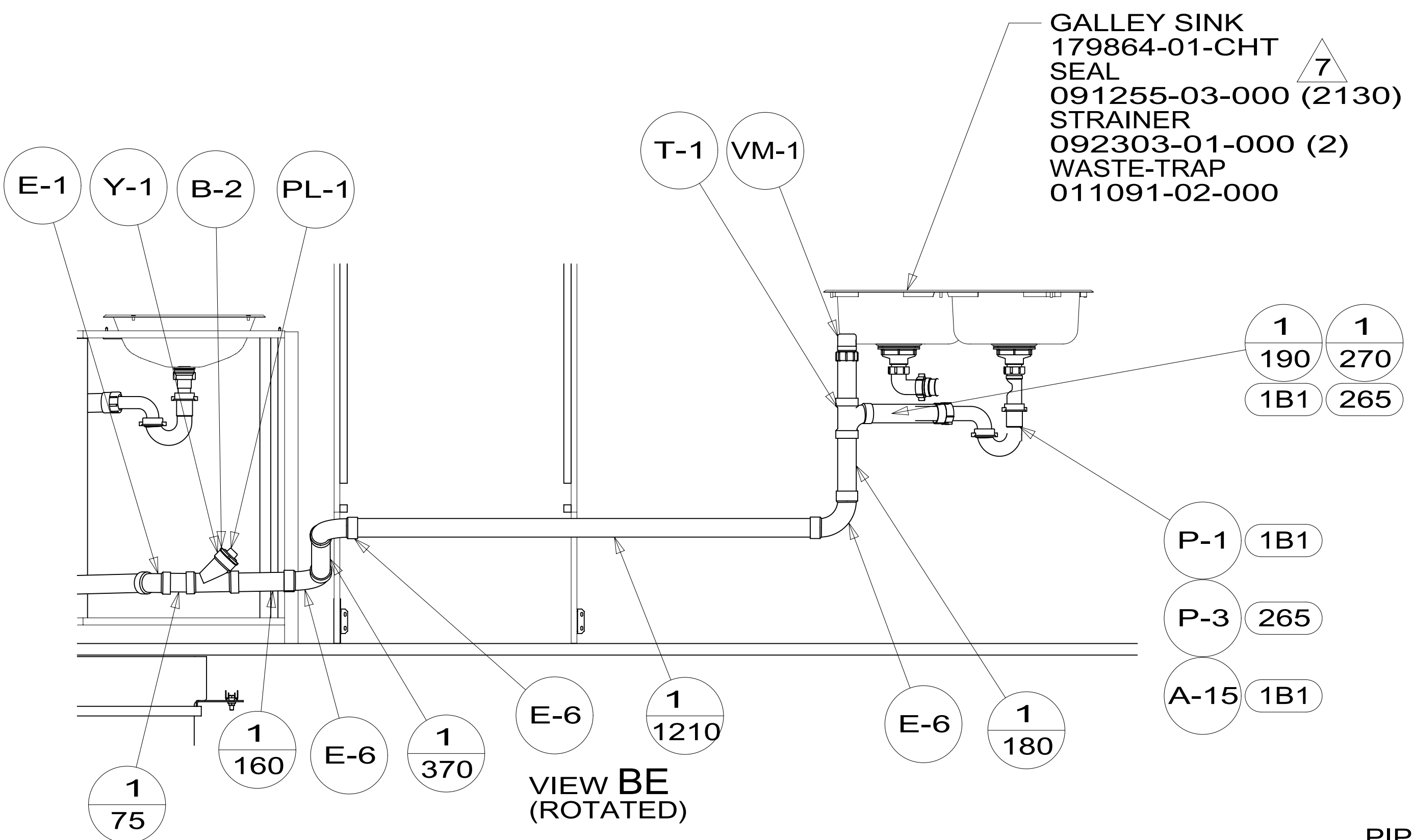
FOR DRAINAGE CALLOUTS SEE DWG NO 116229-01-000

WINNEBAGO		COPYRIGHT 2014 WINNEBAGO INDUSTRIES, INC.	
DFTR	ORIG. DATE	ALL DIMENSIONS ARE IN MILLIMETERS	
CHKR			
P.E.			
M.E.	FIRST USED	15 524J	
DSNR			
UNSPECIFIED TOLERANCES ARE:		MATERIAL:	
WHOLE DIM (X)	: 3		
ONE-PLACE (X.X)	: 1.5		
TWO-PLACE (X.XX)	: 0.50		
ANGLE	: 1°		
THIRD ANGLE PROJECTION			
DO NOT SCALE DRAWING	REFER TO ES0018 FOR FASTENER TIGHTENING GUIDELINES		
TITLE: DRAINAGE SYSTEM INSTL			
SHEET 1 OF 4	PART NO 186877	REV	
REF:	1	19-Aug-2015	

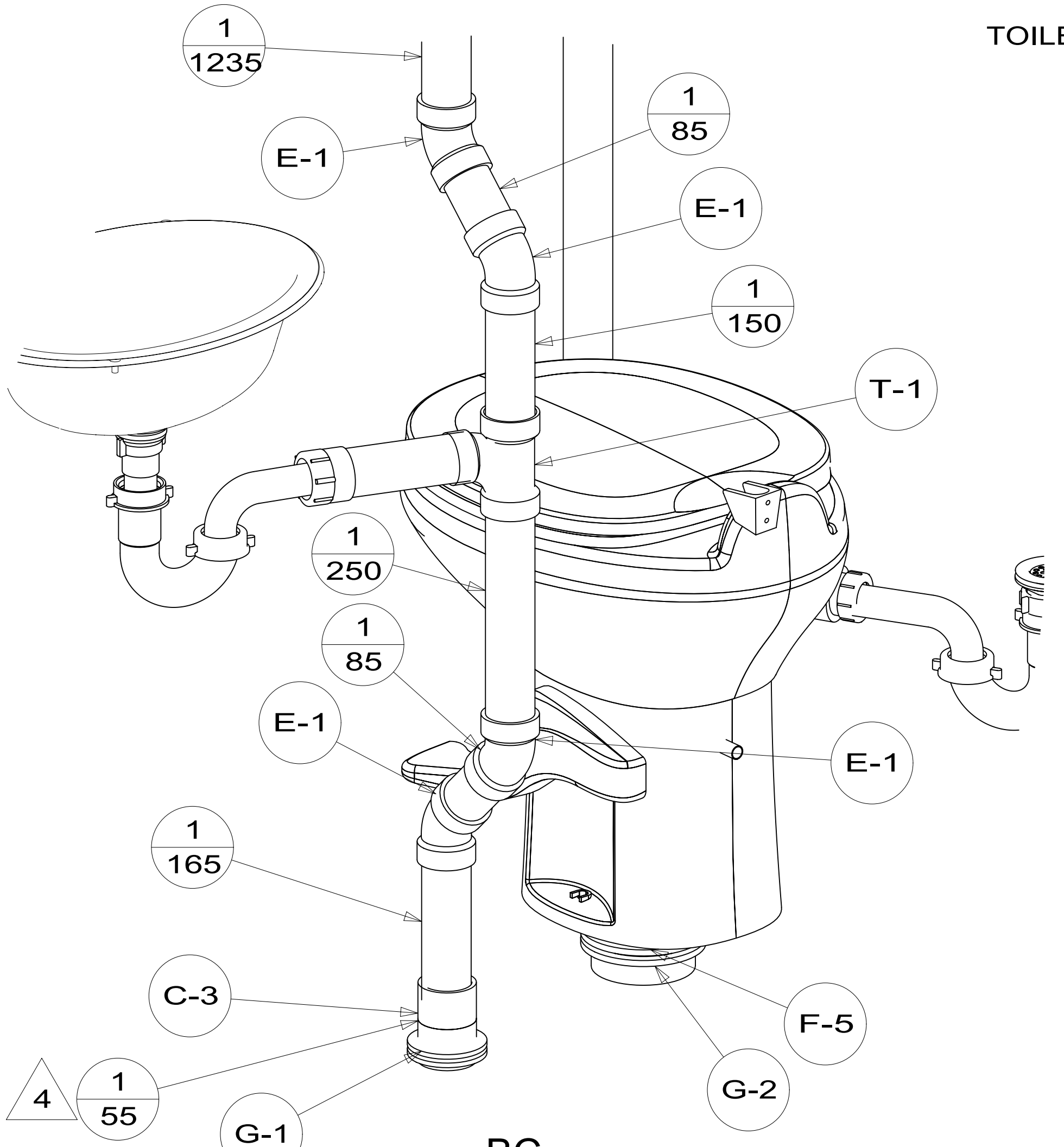
186877



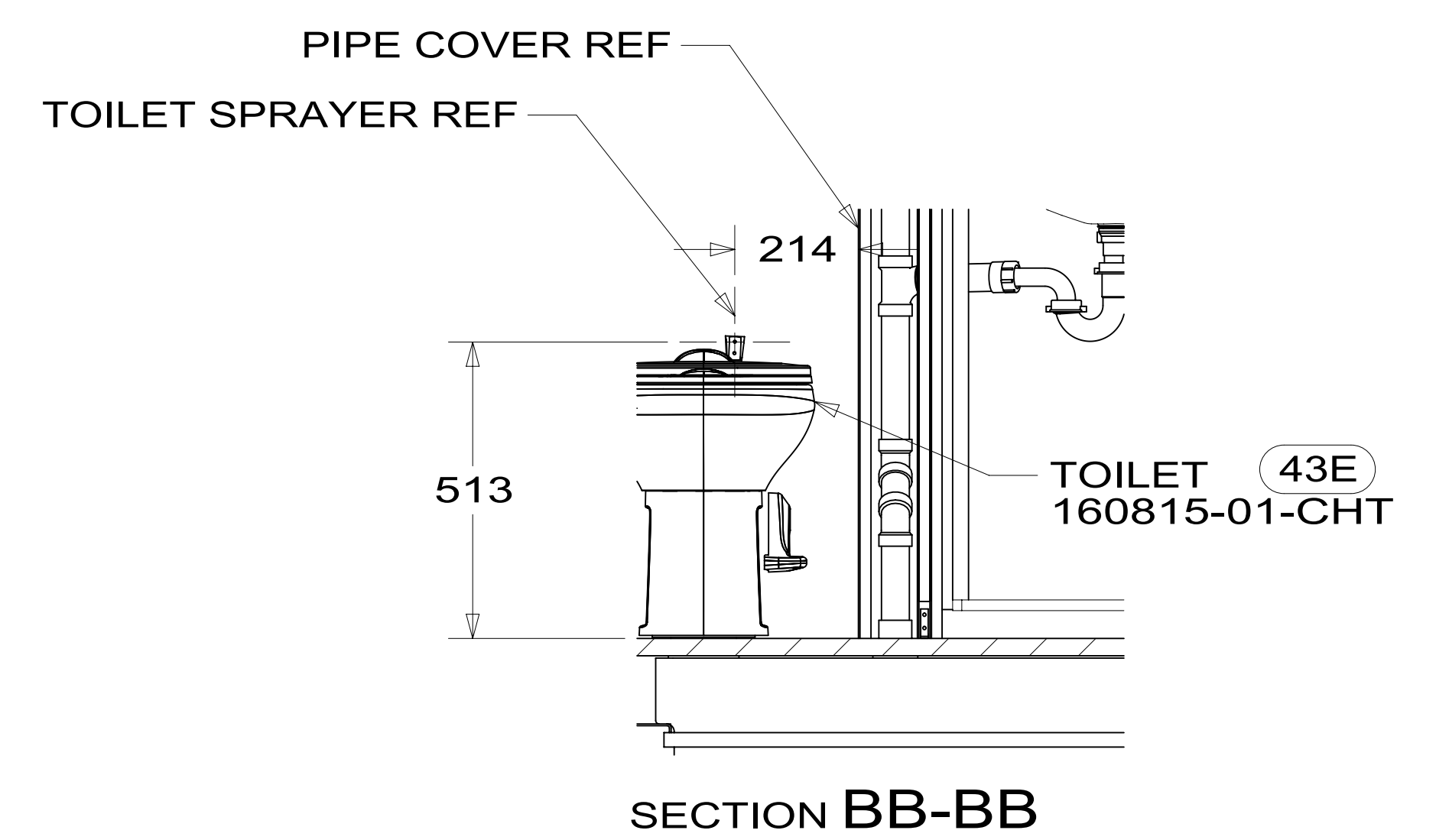
VIEW BA



VIEW BE (ROTATED)



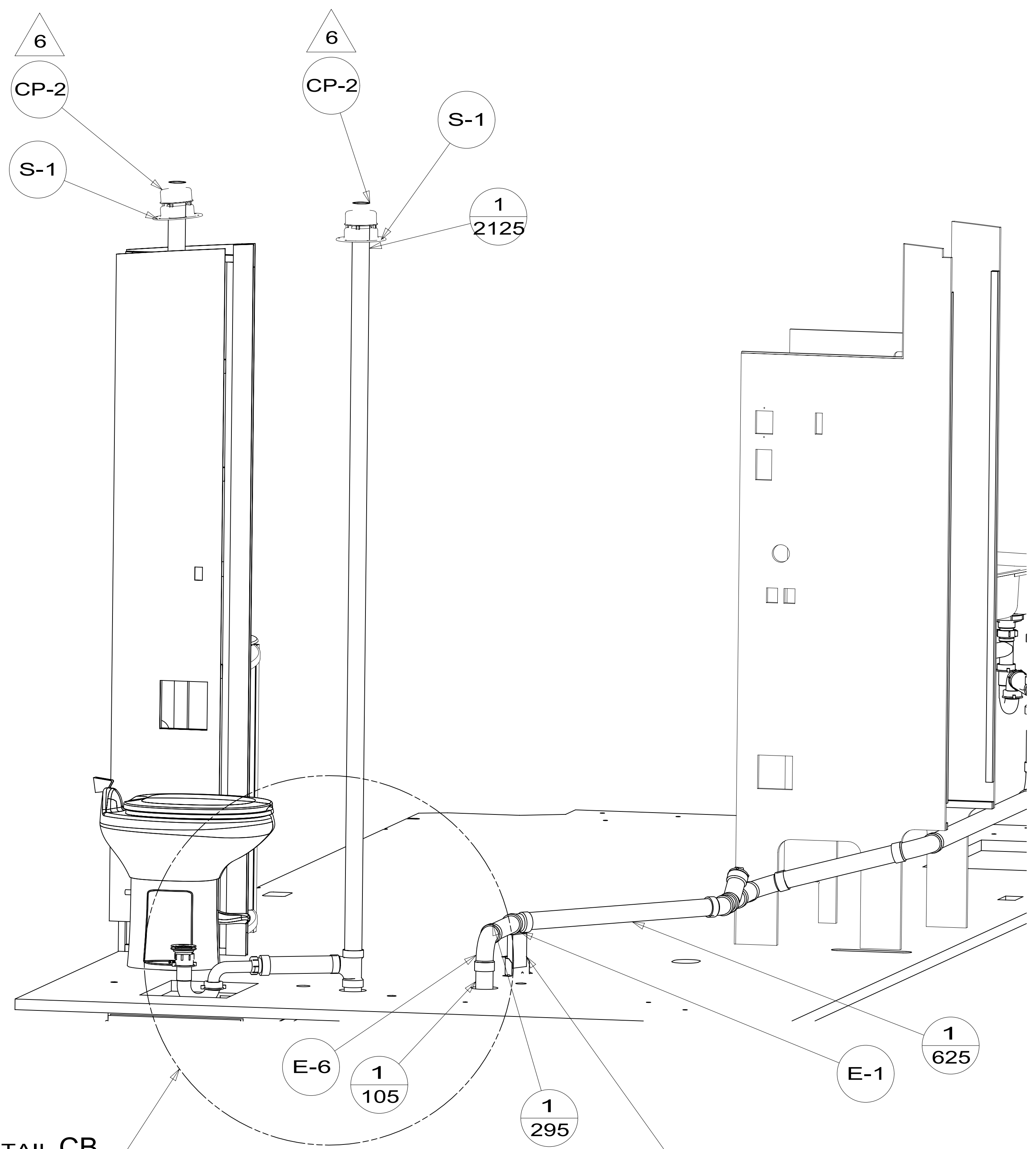
DETAIL BC (SHOWN W/OUT CABINETS AND FLOOR)



SECTION BB-BB

FIRST USED	15 524J	
TITLE:	DO NOT SCALE DRAWING	
	DRAINAGE SYSTEM INSTL	
SHEET 2	PART NO 186877	REV
	1 19-Aug-2015	

186877

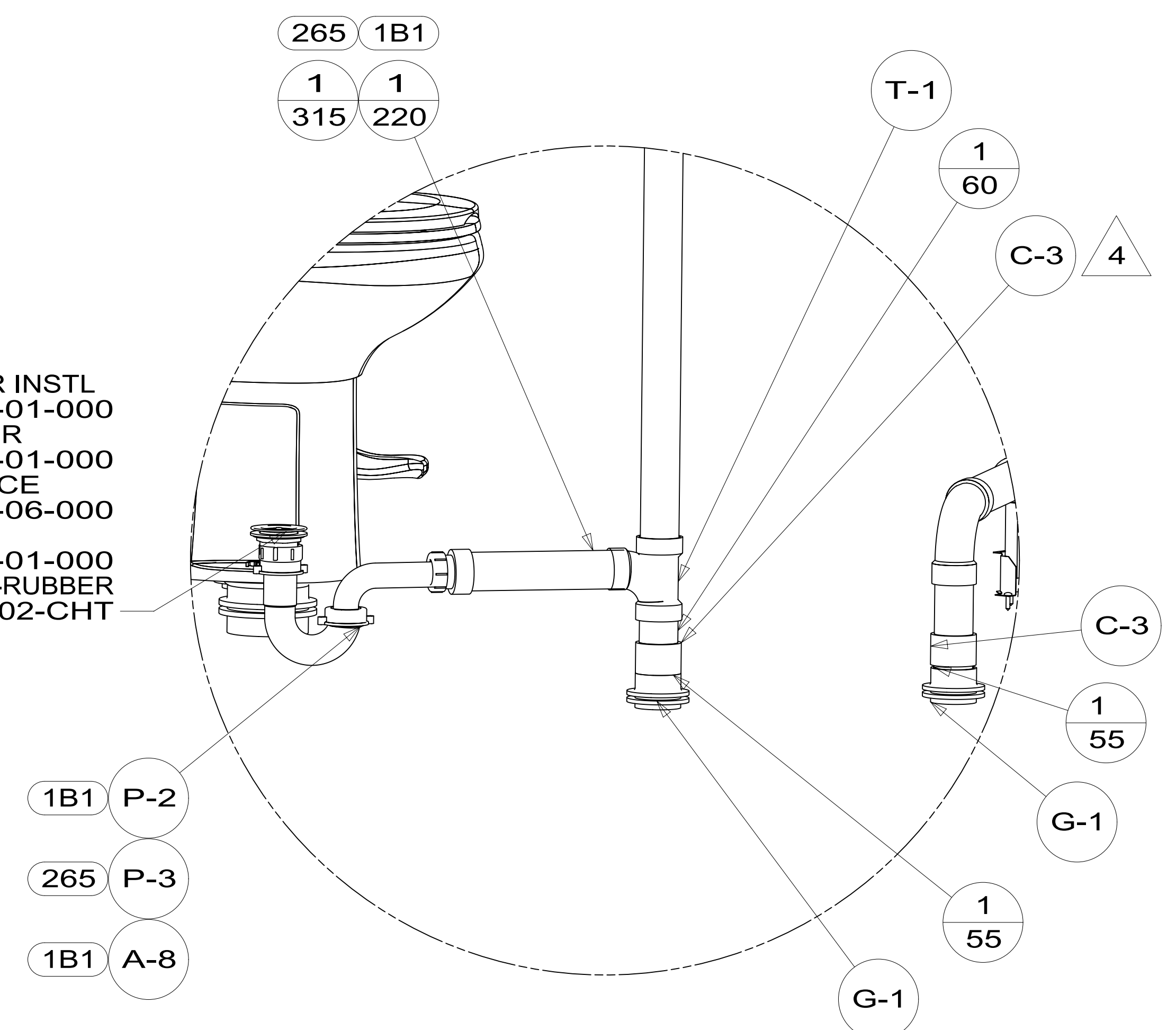


BRACKET
156189-01-CHT
LUMBER
052372-F0-094
SCREW
000G67-10-12U (5)

VIEW CA

DETAIL CB

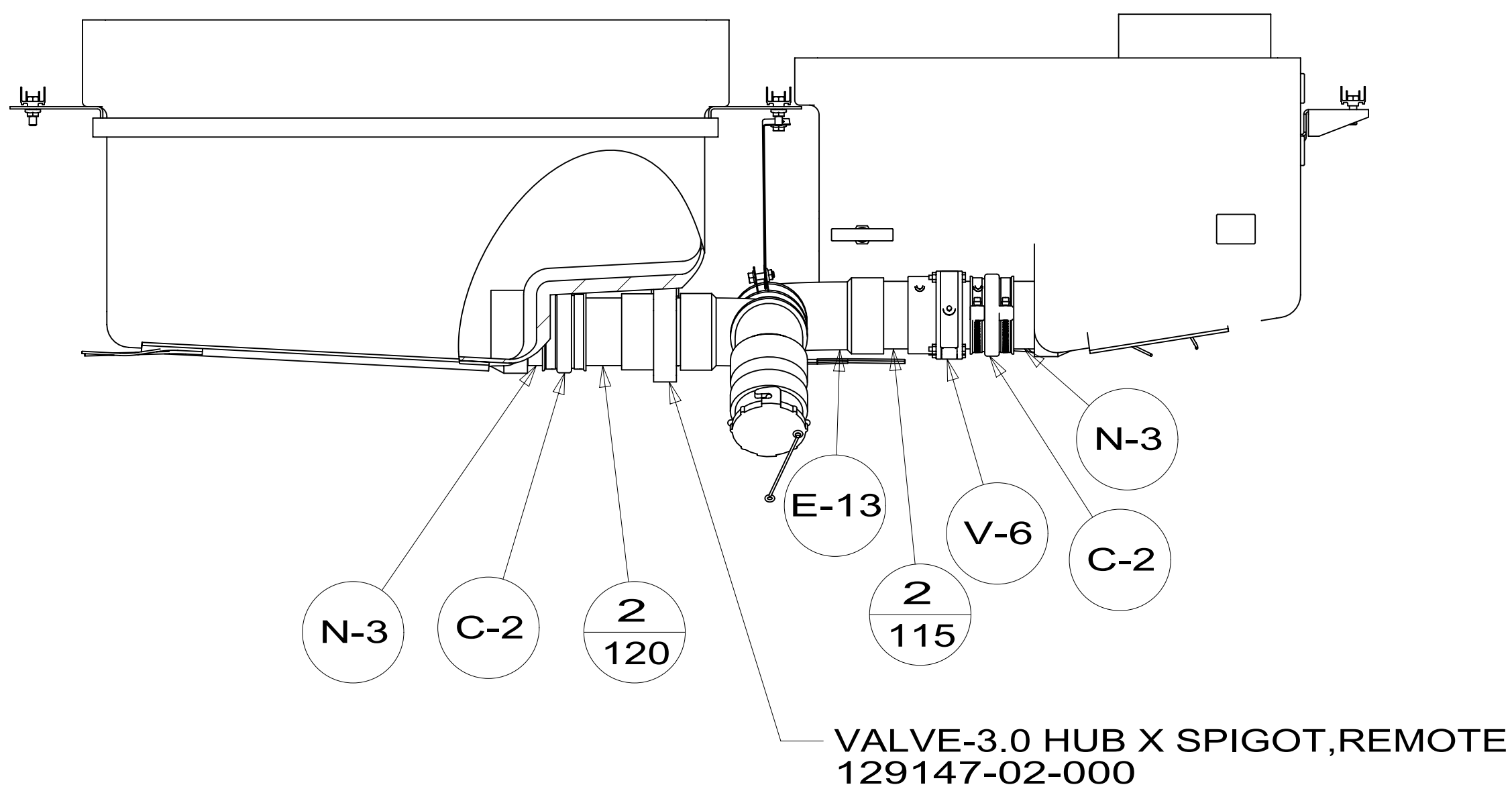
SHOWER INSTL
147936-01-000
STRAINER
066440-01-000
TAILPIECE
011069-06-000
NUT
130403-01-000
WASHER-RUBBER
127440-02-CHT



DETAIL CB
(SHOWN W/OUT
CABINETS AND FLOOR)

FIRST USED	15 524J	
TITLE:	DO NOT SCALE DRAWING	
TITLE:	DRAINAGE SYSTEM INSTL	
SHEET 3	PART NO 186877	REV
	1	19-Aug-2015

186877



VIEW DB

23T 8 PAD-HEATER 133972-03-000

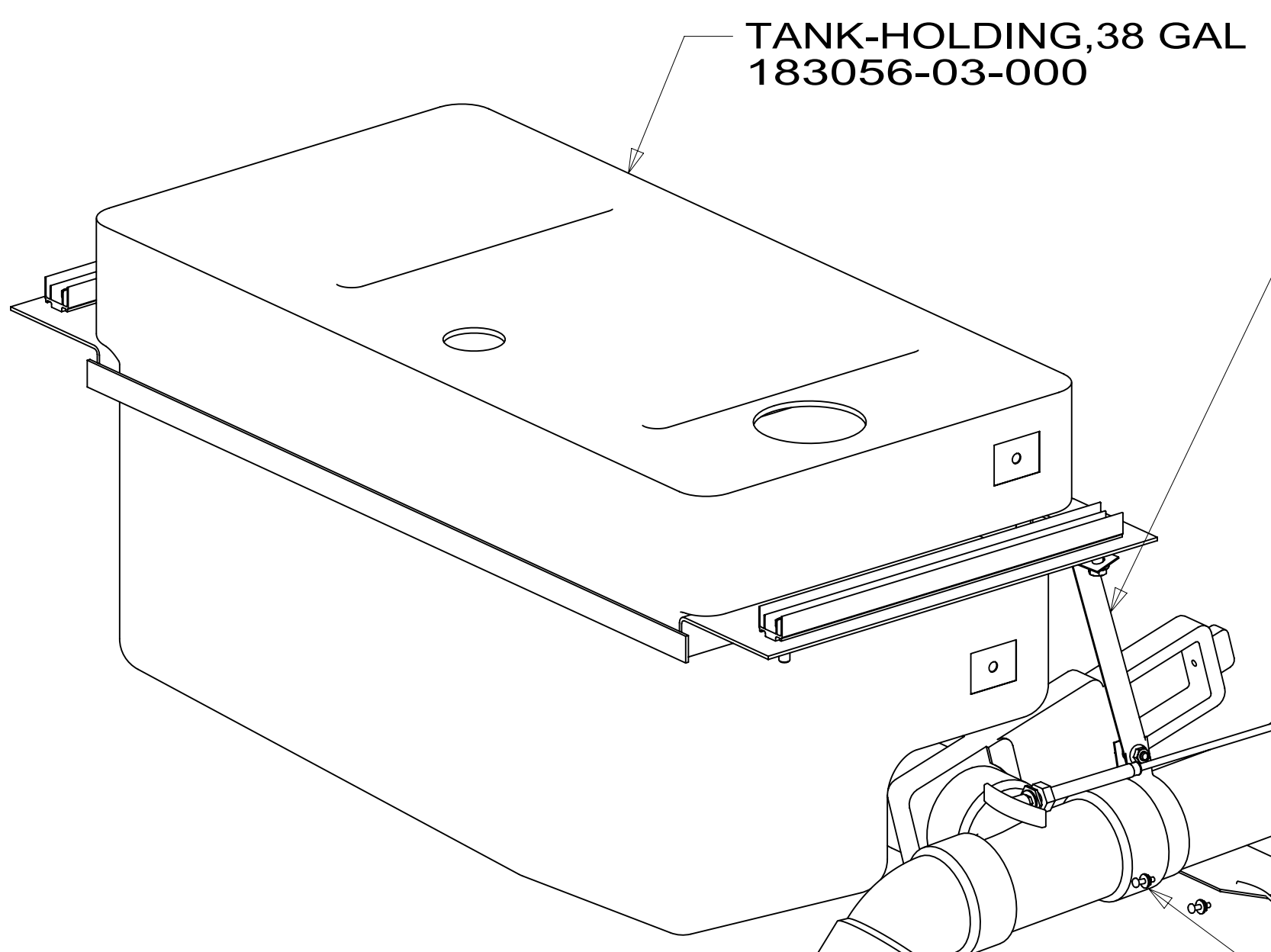
ULOCK-RISER 151437-10-CHT (2)
BOLT 000C12-06-20U (4)

INSULATION-DRAINAGE COMPT 168508-40-000

HANDLE-EXTENSION,W/6 ADAPTER 062419-15-000
BOLT 000G18-08-12U (2)
NUT 000D65-08-00U (2)

VALVE-1.5 062421-11-000

CRADLE ASM-HOLDING TANK 137611-04-CHT



VIEW DA

HANGER-STRAP 140220-19-CHT
HOLDER-RING 141443-05-CHT
NUT 000D39-06-00U
BOLT 000C26-05-16U
NUT 000D39-05-00U

ULOCK-RISER 151437-12-CHT (2)

BOLT 000C12-06-20U (4)
NUT 000D39-06-00U (4)

BRACKET ASM-TANK MOUNT 167936-05-CHT

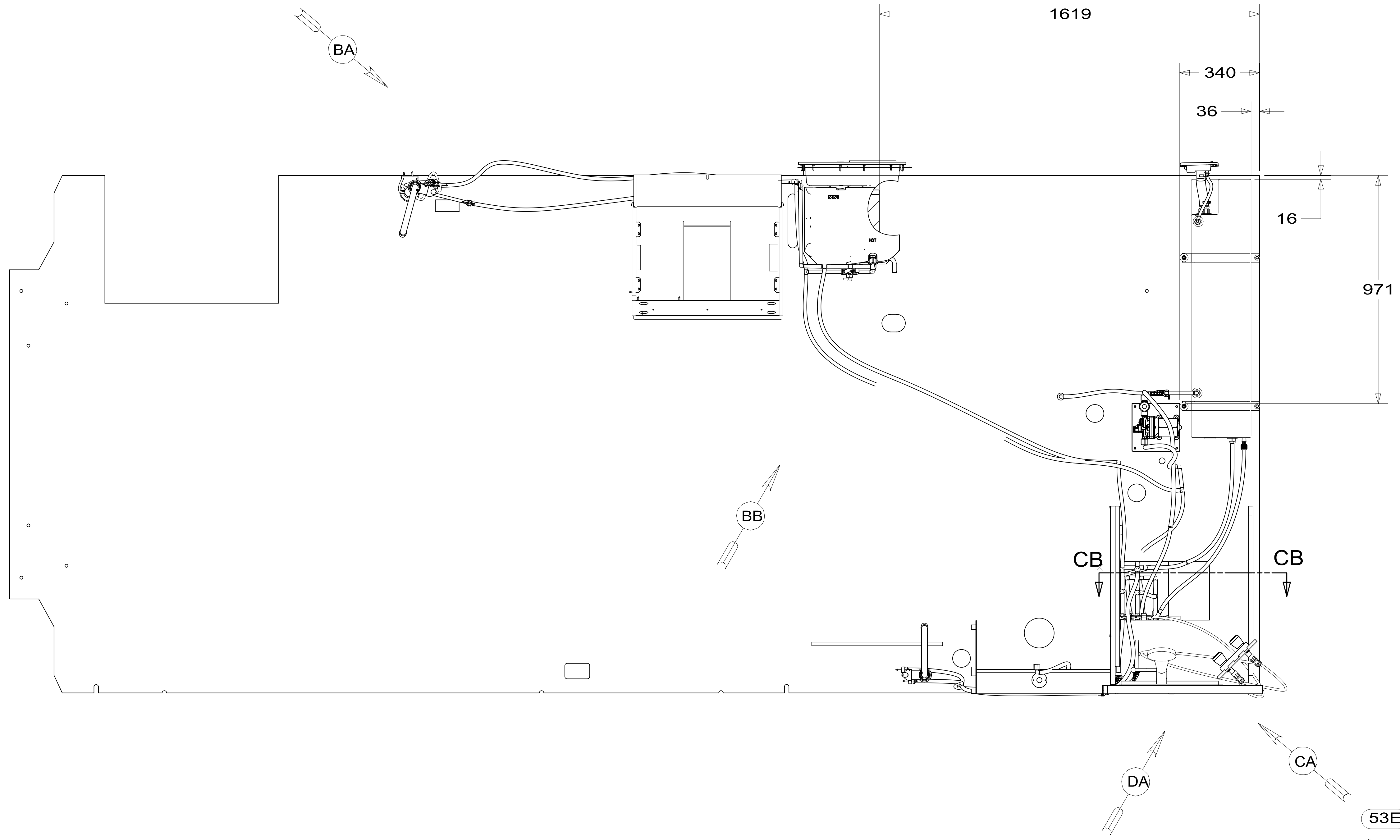
TANK ASM-HOLDING,40 GAL 172748-04-000

BRACKET ASM-TANK MOUNT 167936-03-CHT

PAD-HEATER 133972-04-000 (2) 8 23T

FIRST USED	15 524J	
TITLE:	DO NOT SCALE DRAWING	
	DRAINAGE SYSTEM INSTL	
SHEET 4	PART NO 186877	REV
	1 19-Aug-2015	

186877



10. LAVATORY FAUCET SPOUT TO BE TURNED 180 DEGREES SO THE ON/FF HANDLE IS FACING TOWARD THE CENTER OF THE COACH.
9. INSTALL BYPASS PLUG FOR SYSTEM TESTING AND SHIPPING.
8. ALL CRIMP FITTINGS TO 1/2" PEX TUBING REQUIRE 1/2" CLAMP 140171-03-000.
7. ALL CRIMP FITTINGS TO 5/8" PEX TUBING REQUIRE 5/8" CLAMP 140171-04-000.
6. LABEL HOT AND COLD SUPPLY TUBES AND TAPE FITTING TO TUBE BEFORE CABINET SET TO PREVENT MOVEMENT.
5. ADD PIPE WRAP (LADDER SCRAP 110157-02-000) INSULATION.
4. ADD TEFLON TAPE 010405-02-000.
3. ALL TUBING TO BE SECURED AT 1200 INTERVALS MAXIMUM WITH CLAMP 010495-01-000 AND SCREW 000G67-10-12U OR EQUIVALENT.
2. TUBING TO BE INSTALLED WITH SUFFICIENT SLOPE TO PROVIDE DRAINAGE TO NEAREST VALVE.
1. PLASTIC FITTINGS TO BE SEALED WITH SEALANT 084456-01-000.

- 53E WATER SYS WINTERIZATION PKG
- 53B WTR HTR-6 GAL ELEC/LP/GAS
- 29B WATER PURIFIER
- 64R EXTERIOR WASH STATION

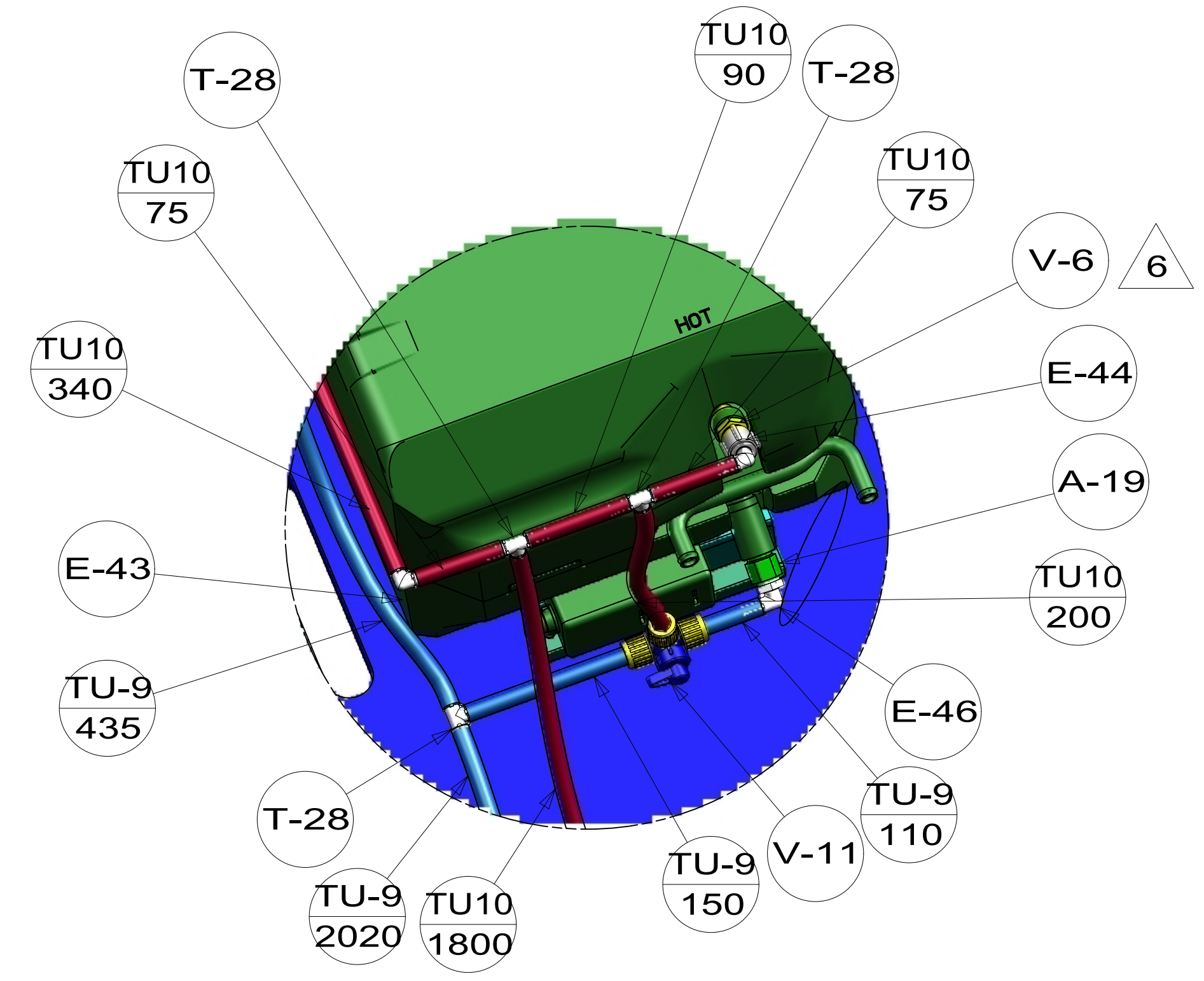
NOTES:

FOR WATER CALLOUTS SEE DWG NO 116230-01-000

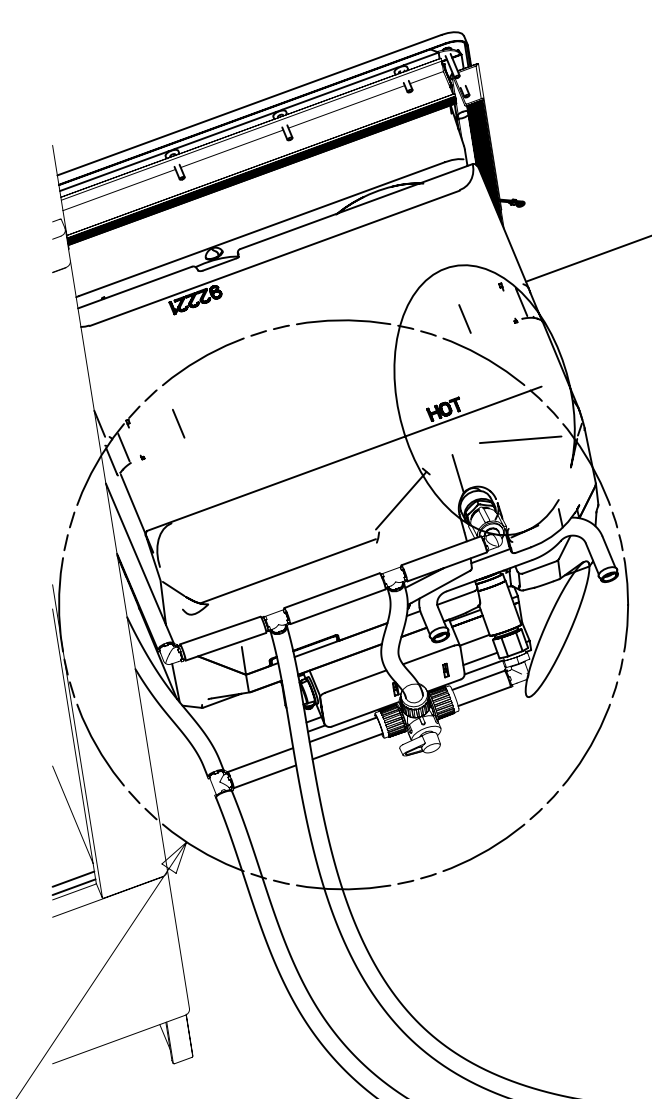
WINNEBAGO		COPYRIGHT 2014 WINNEBAGO INDUSTRIES, INC.	
DFTR	ORIG. DATE	ALL DIMENSIONS ARE IN MILLIMETERS	
CHKR			
P.E.			
M.E.	FIRST USED		
DSNR		15 524J	
UNSPECIFIED TOLERANCES ARE:		MATERIAL:	
WHOLE DIM (X)	: 3		
ONE-PLACE (X.X)	: 1.5		
TWO-PLACE (X.XX)	: 0.50		
ANGLE	: 1°		
THIRD ANGLE PROJECTION			
DO NOT SCALE DRAWING		REFER TO ES0018 FOR FASTENER TIGHTENING GUIDELINES	
TITLE: WATER SYSTEM INSTL			
SHEET 1 OF 4	PART NO	186884	REV
REF:	1	20-Jul-2015	

*186884 *A

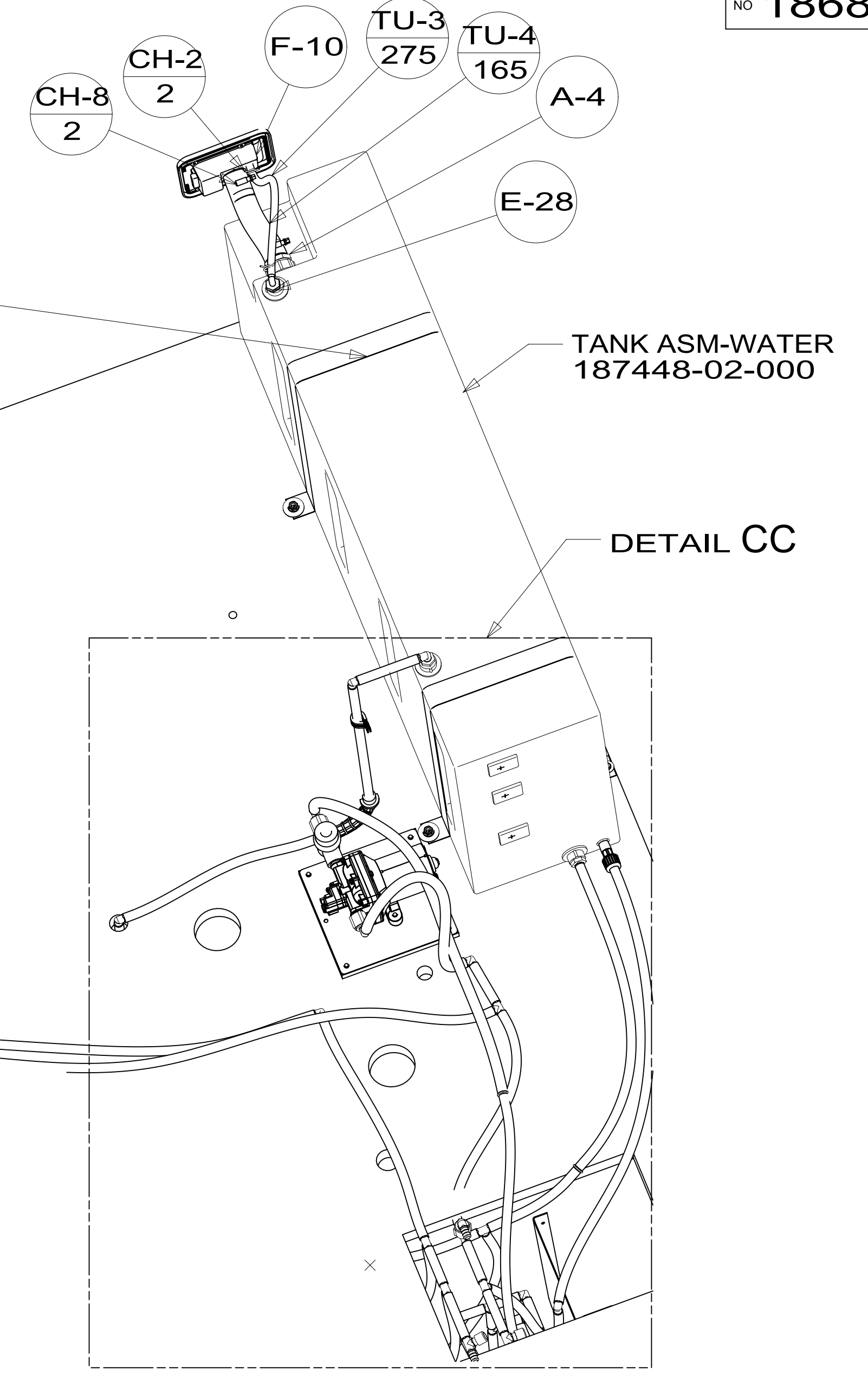
- STRAP-TANK, WATER
- 118994-26-CHT (2)
- SCREW
- 000G42-04-24U (2)
- WASHER
- 000E13-16-00U (2)
- SCREW
- 000G39-10-08U(2)
- NUT
- 000D39-05-00U(2)
- WASHER
- 000E13-22-00U(2)



DETAIL BC
(SHOWN W/OUT CABINETS)



DETAIL BC

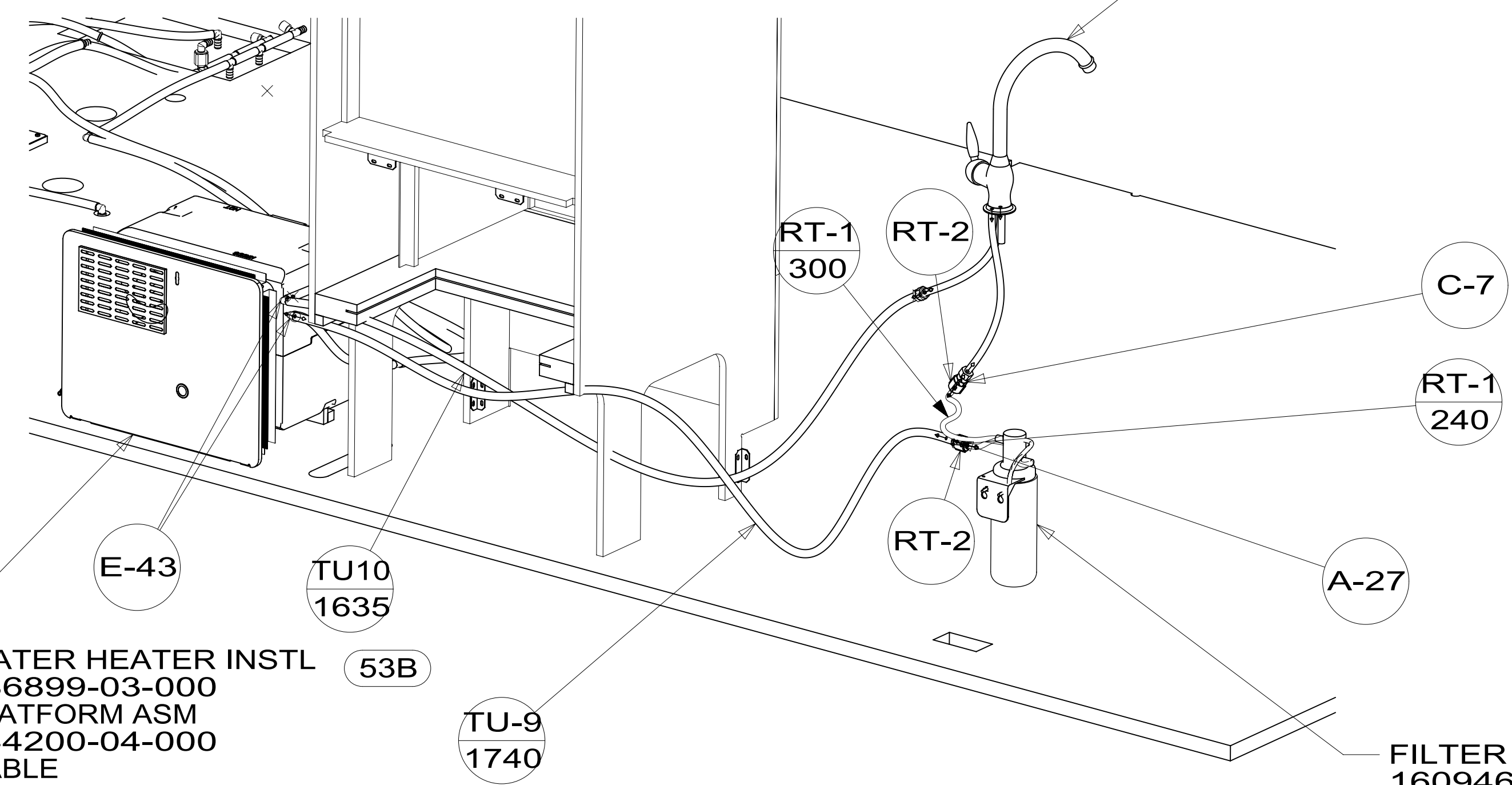


TANK ASM-WATER
187448-02-000

DETAIL CC

VIEW BB

FAUCET-GAL, SGL CNTL
171482-02-CHT



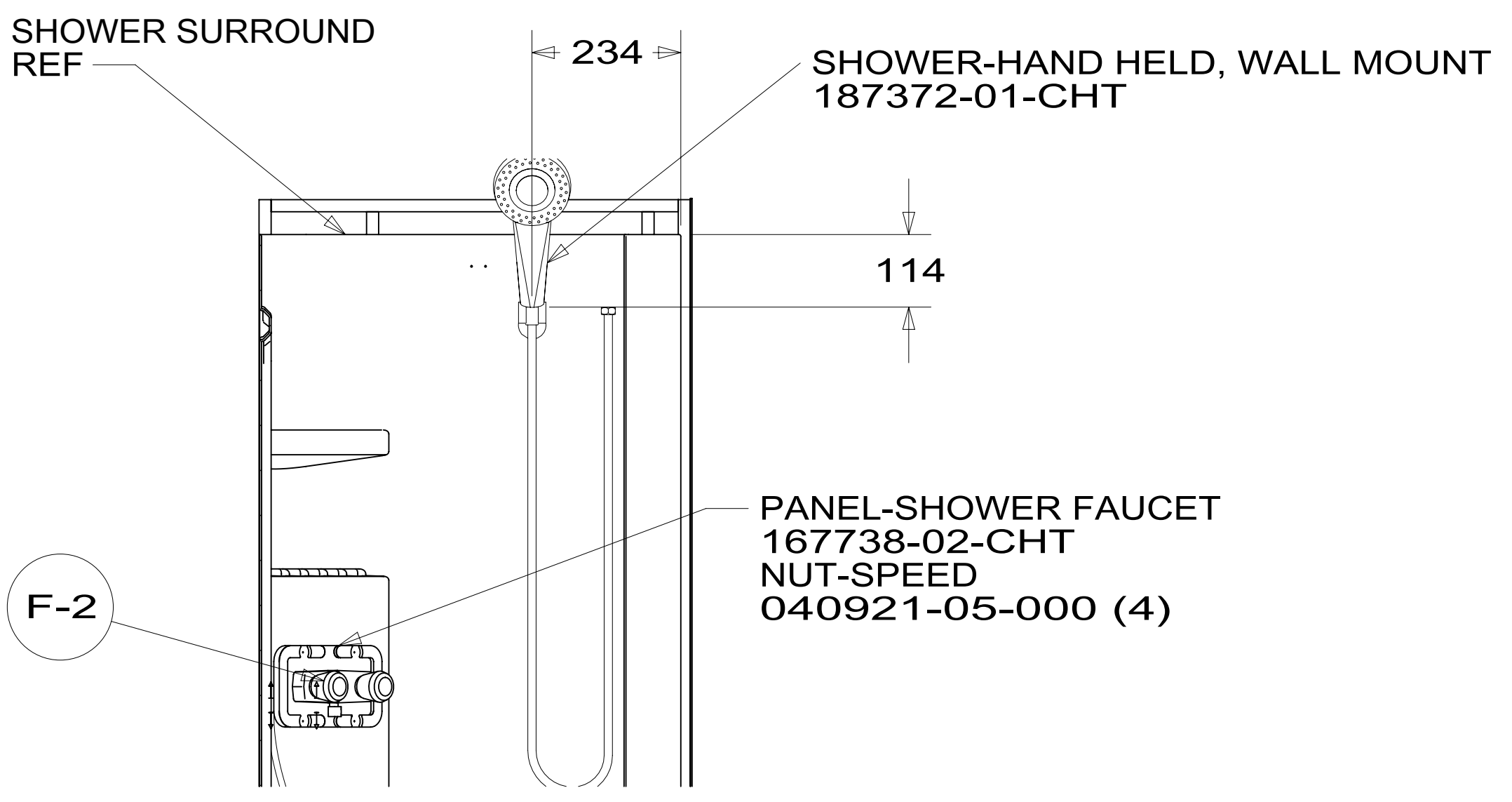
VIEW BA

FILTER KIT-WATER
160946-03-000
SCREW
000G67-10-12U(2)

- WATER HEATER INSTL
- 186899-03-000
- PLATFORM ASM
- 144200-04-000
- CABLE
- 076767-03-000
- SCREW
- 000G39-08-08U (2)

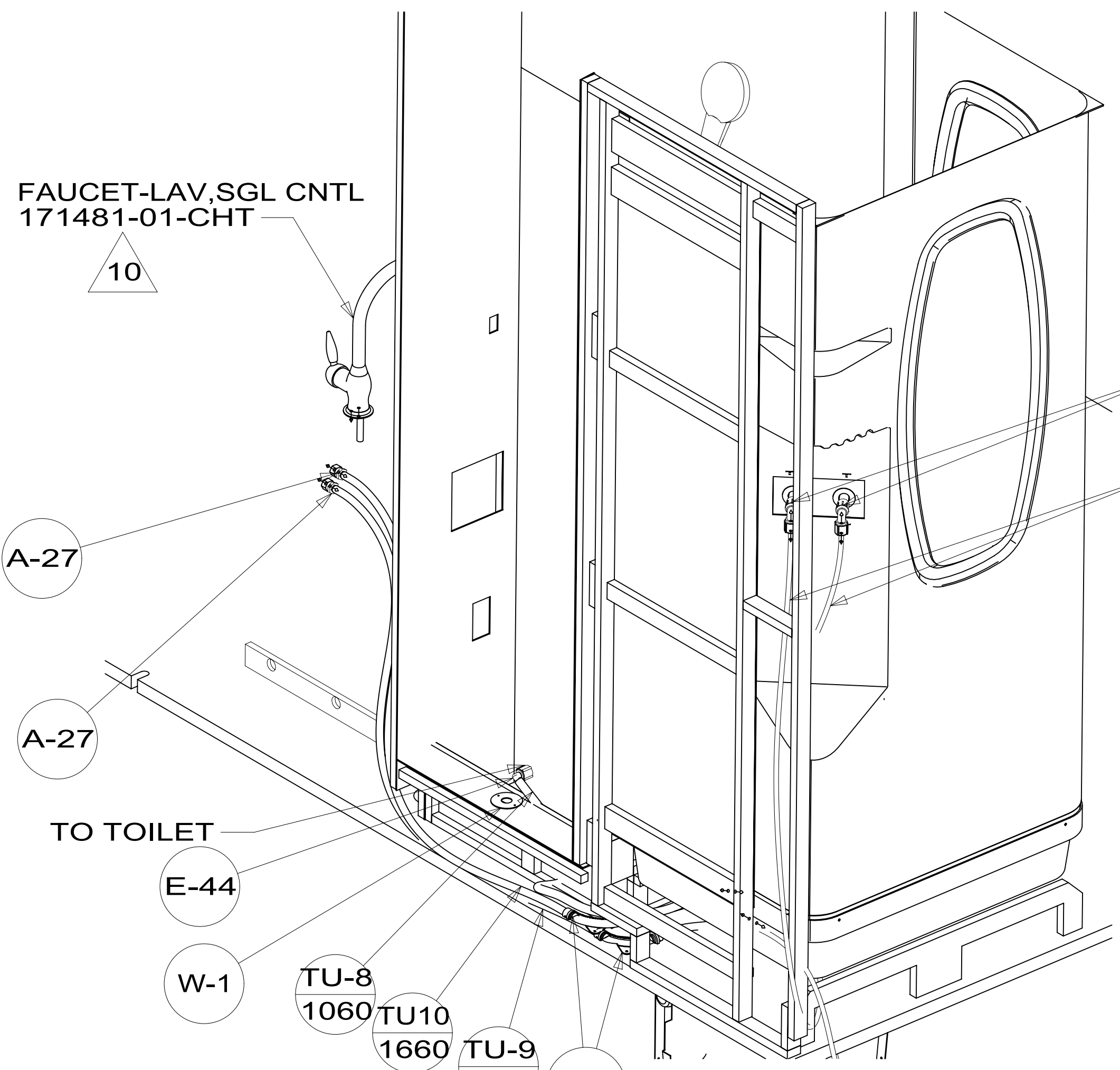
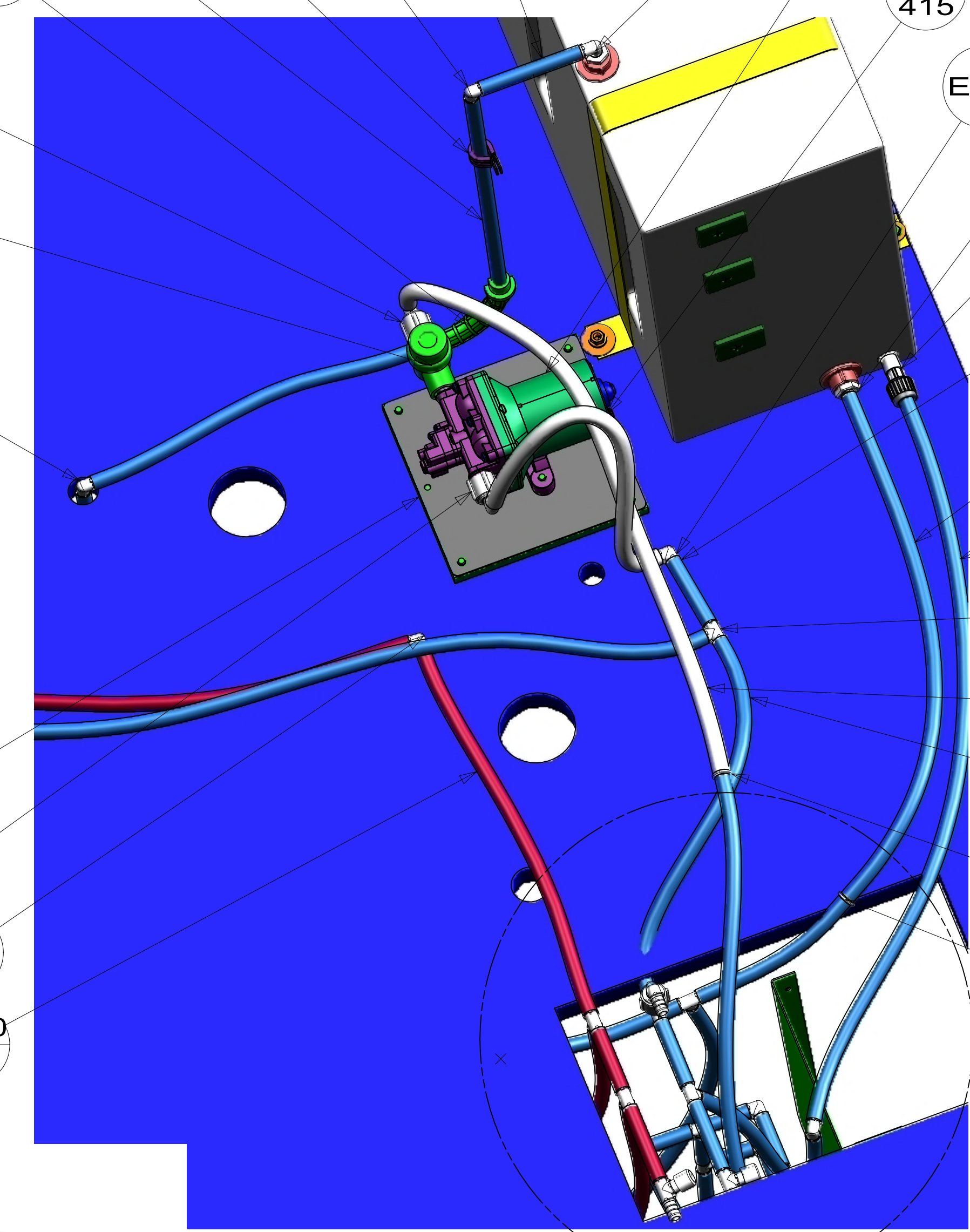
FIRST USED	15 524J	
DO NOT SCALE DRAWING		
TITLE: WATER SYSTEM INSTL		
SHEET 2	PART NO 186884	REV
		1 20-Jul-2015

*186884 *A

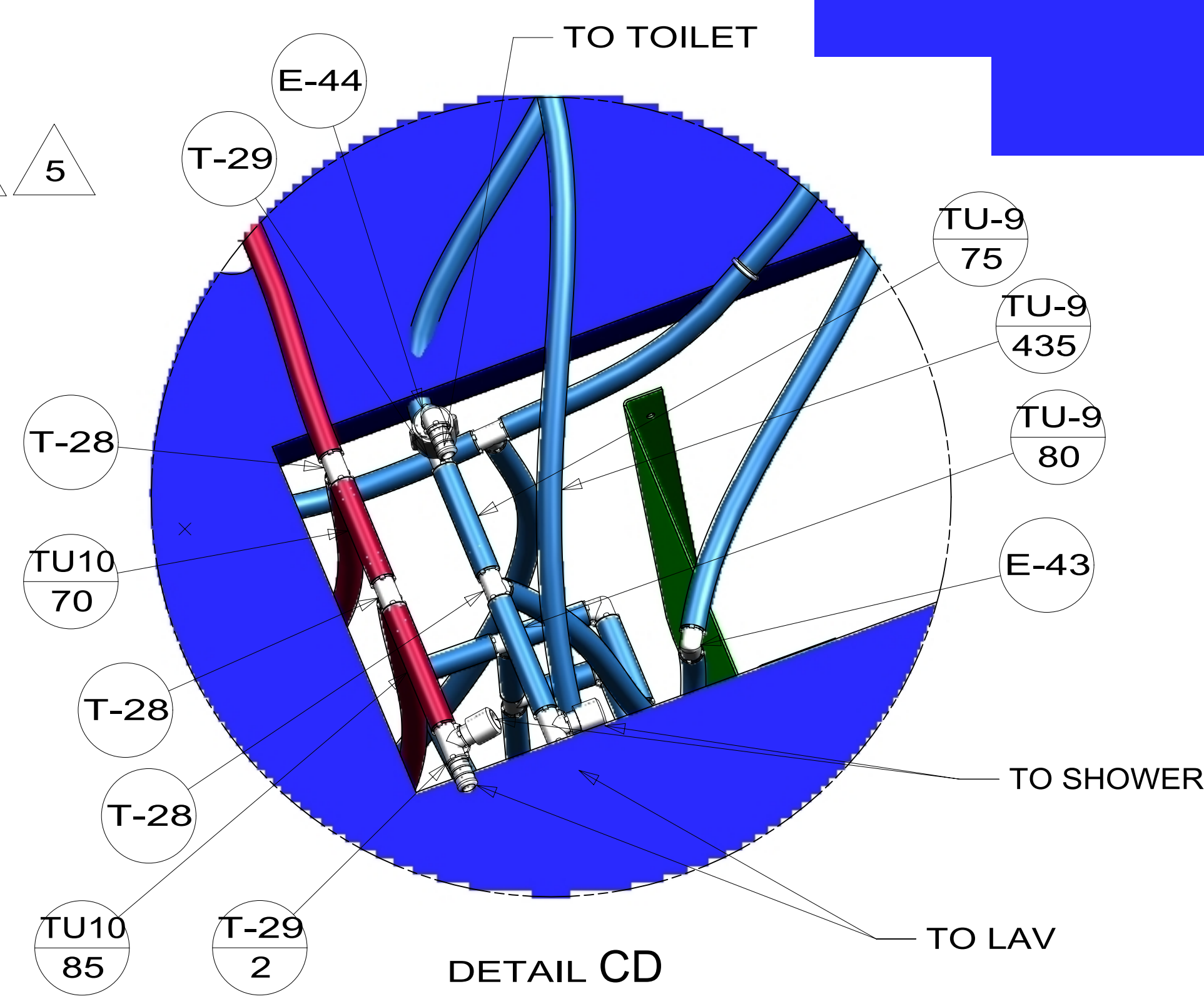


SECTION CB-CB

PANEL-WATER PUMP
149477-08-CHT
FOAM
140364-01-CHT
SCREW
000G39-08-16U (4)



VIEW CA



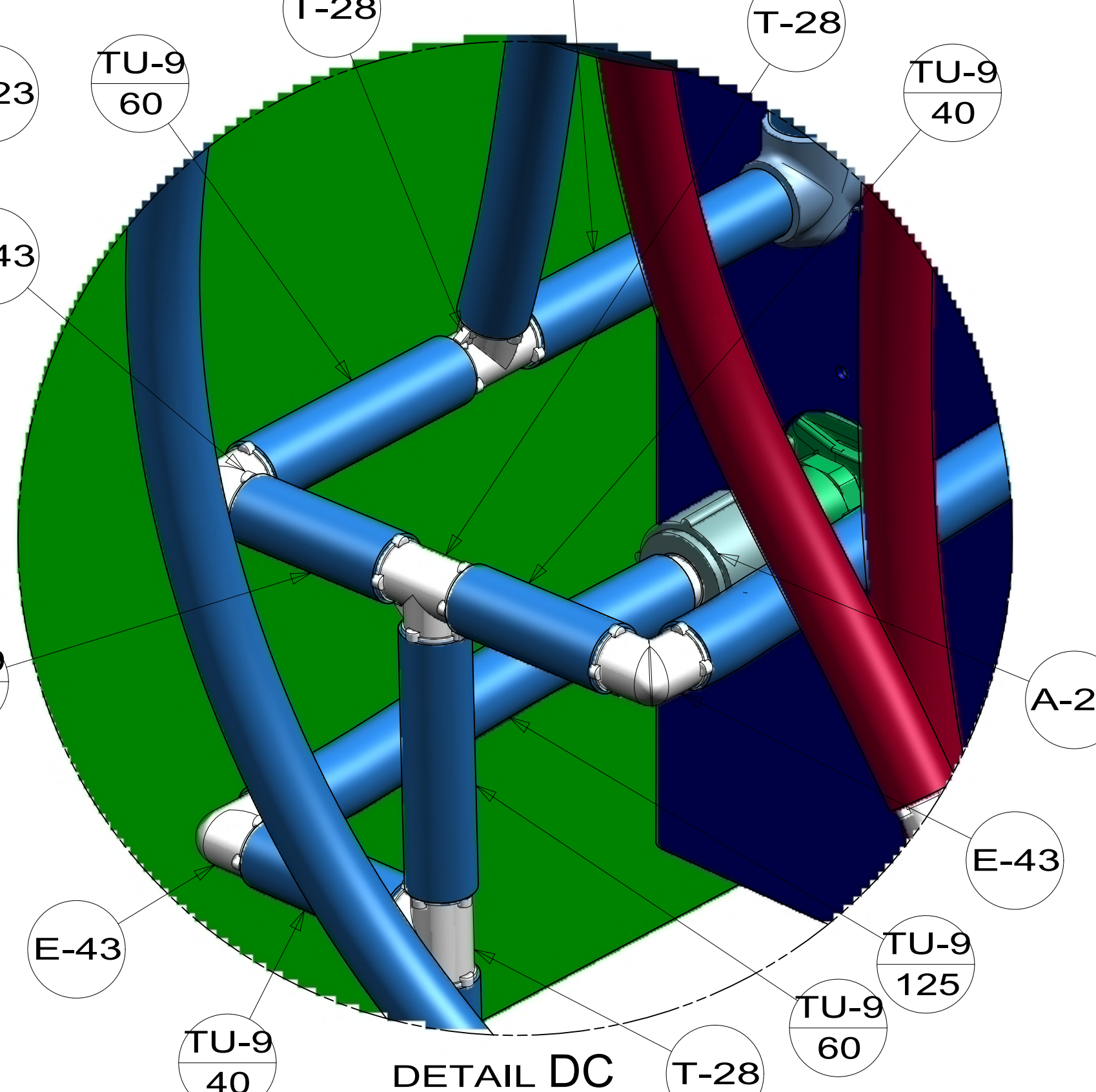
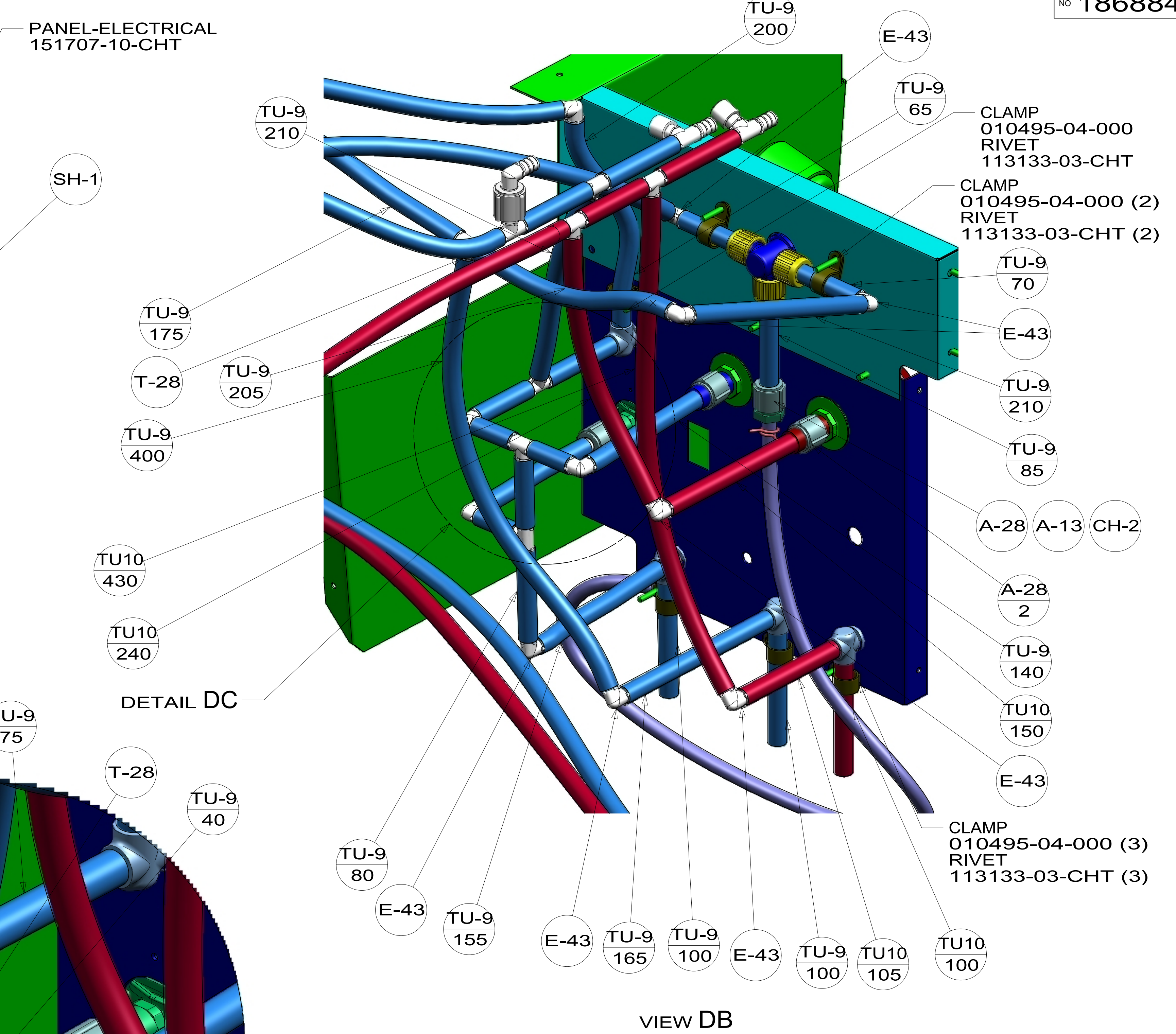
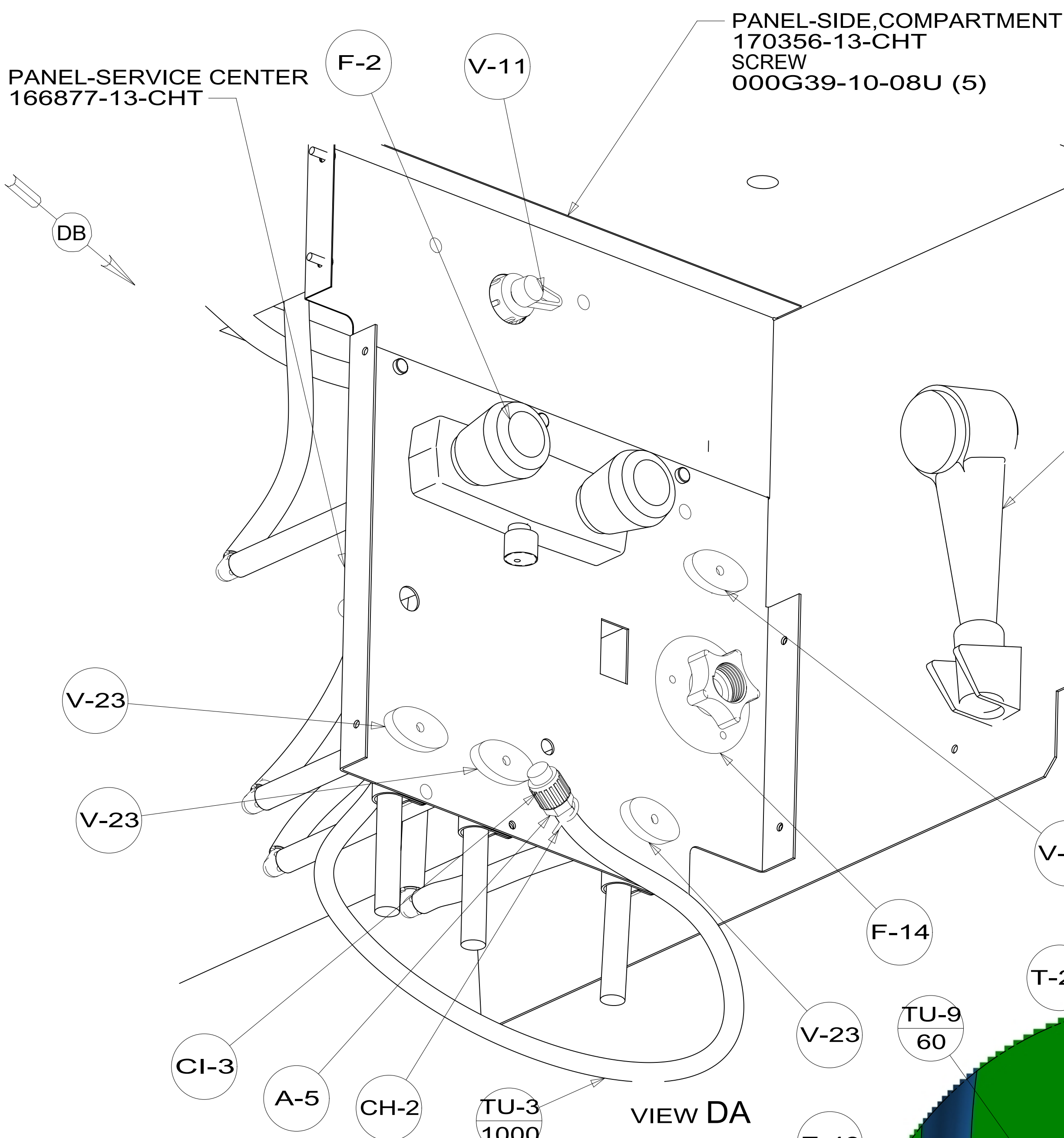
DETAIL CD

DETAIL CC

DETAIL CD

FIRST USED	15 524J	
TITLE:	DO NOT SCALE DRAWING	
	WATER SYSTEM INSTL	
SHEET 3	PART NO	186884
	REV	1
		20-Jul-2015

186884



FIRST USED	15 524J	
DO NOT SCALE DRAWING		
TITLE:	WATER SYSTEM INSTL	
SHEET 4	PART NO	186884
	REV	
		20-Jul-2015

*186884 *A