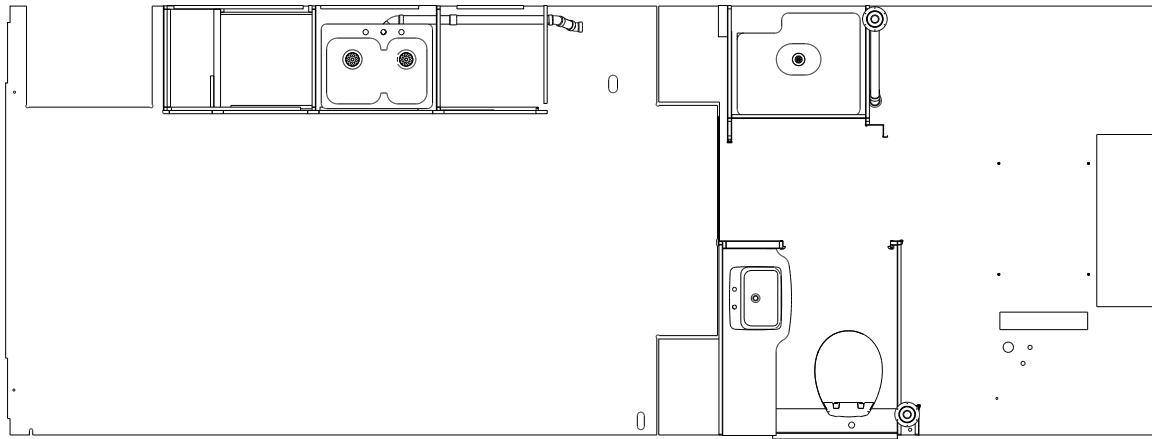


DWG NO	MODEL	DETAIL DB OR DC	DETAIL CB OR CC	DETAIL BD OR BC	DETAIL CD OR CE
186990-01	331K/KR	DB	CB	BD	CD
186990-02	331KP	DC	CC	BC	CE

RELEASE	REV/DATE	DWG NO	186990
REV ZONE	REVISION RECORD	DATE	07R-016



13 NOT USED W/ (644)

12 CUT PART TO 90mm.

11 PREP THE SURFACE PER MANUFACTURERS INSTRUCTIONS BEFORE APPLYING THE HEATING PAD.

10 SEE WIRING INSTL-BODY FOR ELECTRICAL CONNECTION.

9. SEE DRAWING 061607 FOR INSTALLATION OF GROMMETS.

8. SECURE DRAINAGE PIPES TO CABINET USING WIRE TIE 108046-02-000, AND SCREW 000667-10-12U AT INTERVALS OF NOT OF NOT MORE THAN 4 FEET APART.

7. SECURE VENT PIPE TO FLOOR WITH CLAMP 062401-02-000 (2), SCREW 000667-10-12U (2), BRACKET 136878-01-CHT (2).

6. VENT PIPE MUST PROJECT 51 MIN AND 64 MAX ABOVE ROOF FOR PROPER FIT AND FUNCTION. ADD S-1 (116666-01-CHT SEAL-VENT PIPE) AROUND PIPE ON ROOF BEFORE VENT CAP IS INSTALLED.

5. SEAL AROUND SHOWER WITH SILICONE.

4. USE SMOOTH PLUMBERS PUTTY 167459-01-000 TO SEAL STRAINER (0.2 PER STRAINER).

3. ALL PIPE AND FITTINGS TO BE ASSEMBLED WITH SOLVENT 004020-01-000 (USA), 004020-02-000 (CAN)

2. SLOPE OF TRAP ARM MUST BE 6 PER 305 mm.

1. SLOPE OF HORIZONTAL PIPING TO BE MINIMUM OF 3 PER 305 mm.

NOTES:

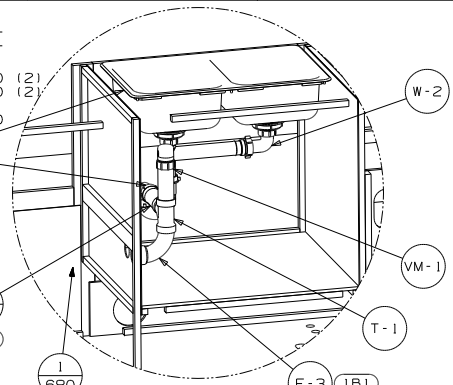
- (644) GREAT ALASKAN RENTAL PACKAGE
- (265) CODES/STANDARDS-CSA/CMVSS
- (23T) DRAINAGE SYSTEM-HEATED
- (1B1) CODES/STANDARDS USA

WINNEBAGO COPYRIGHT 2014
WINNEBAGO INDUSTRIES, INC.

QTR	ORIG. DATE
CHR	ALL DIMENSIONS ARE IN MILLIMETERS
P.E.	FIRST USED
W.E.	
QTR	14 331K
UNSPECIFIED TOLERANCES ARE:	
SIZE DIM (X)	MATERIAL
ONE-PLACE (X,X)	1.5
TWO-PLACE (X,X,X)	0.50
ANGLE	1°
THIRD ANGLE PROJECTION	
DO NOT SCALE DRAWING REFER TO ES0016 FOR FASTENER TIGHTENING GUIDELINES	
TITLE: DRAINAGE SYSTEM INSTL	
SHEET 1 of 4	PART NO 186990 REV
REF: 183460M 1	

FOR DRAINAGE CALLOUTS SEE DWG NO 116229-01-000

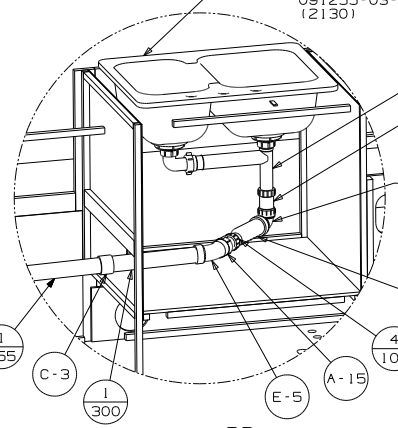
- SINK 179864-01-CHT
- 644 179864-02-CHT
- STRAINER 092303-01-000 (2)
- 644 163569-01-000 (2)
- SEAL 091255-03-000 (2130)
- 1B1 P-1
- 265 P-3
- 1B1 A-15
- 1 185 1 125
- 265 1B1



DETAIL BC
(SEE TAB)
644) DETAIL BD

- 1 680
- E-3 1B1
- E-6 265
- 1 35 265

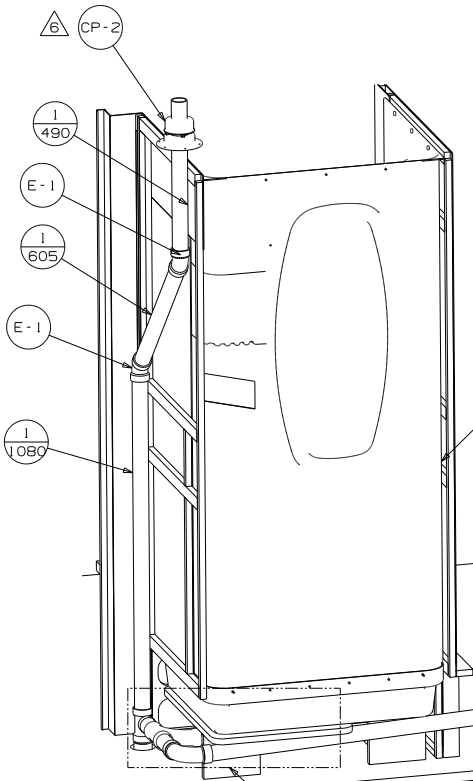
- SINK 163942-03-CHT
- STRAINER 092303-01-000 (2)
- SEAL 091255-03-000 (2130)



DETAIL BD
(SEE TAB)

- W-2
- ADAPTER-IN LINE, 1/2" 165406-03-000
- ADAPTER-ANGLE, WATERLESS TRAP 165406-02-000
- TRAP-WATERLESS, 1-1/2" 165406-01-000

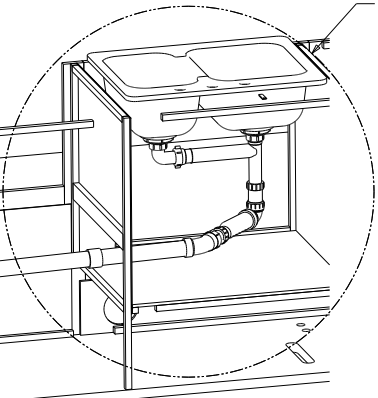
- 4 100
- E-5
- A-15



DETAIL BB

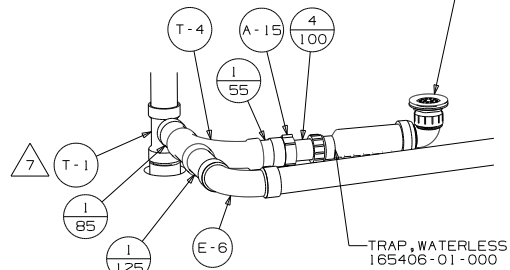
SHOWER INSTL-ENCLOSURE
147936-05-000

DETAIL BD OR BC
(SEE TAB)



- 1 1615
- E-1
- 1 100
- E-1

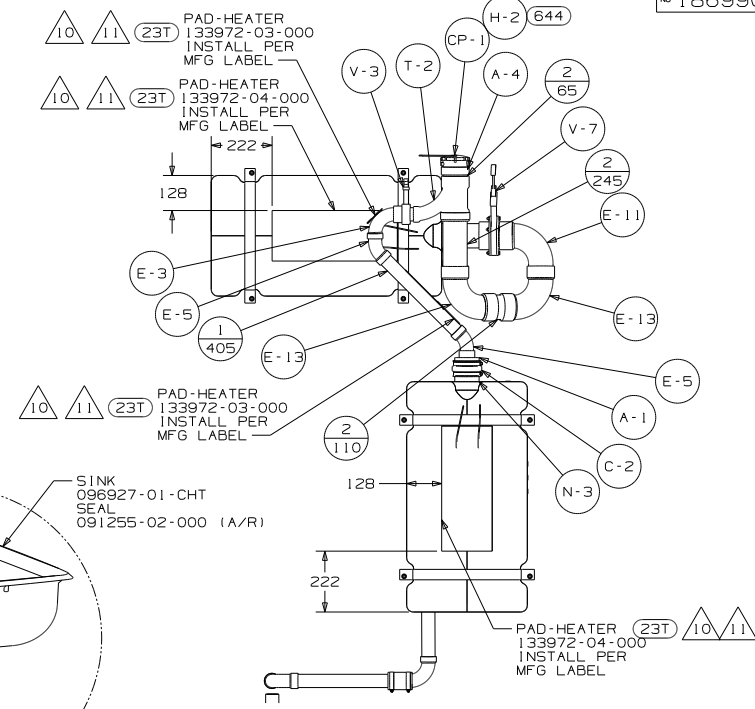
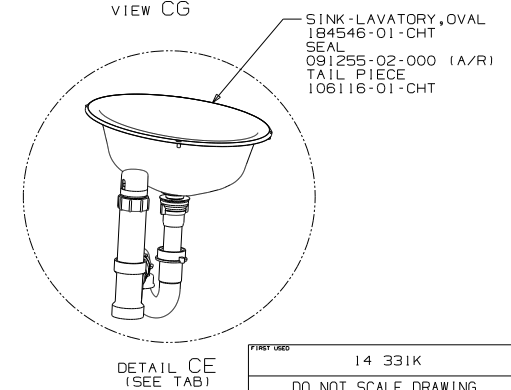
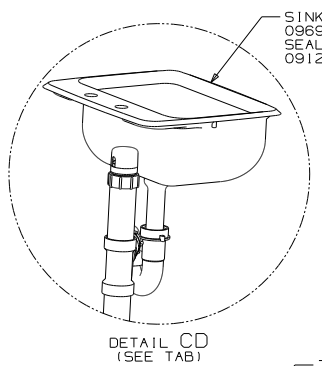
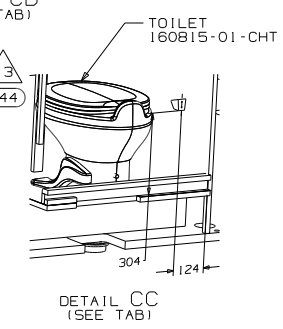
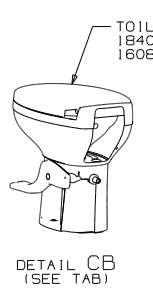
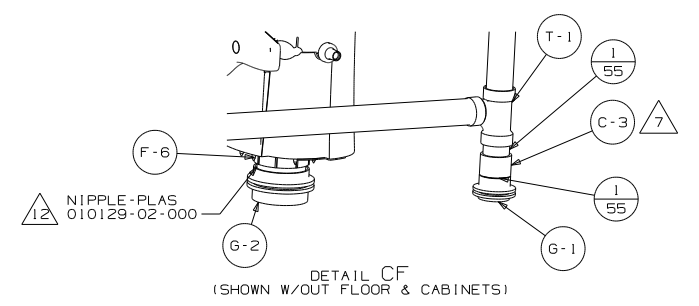
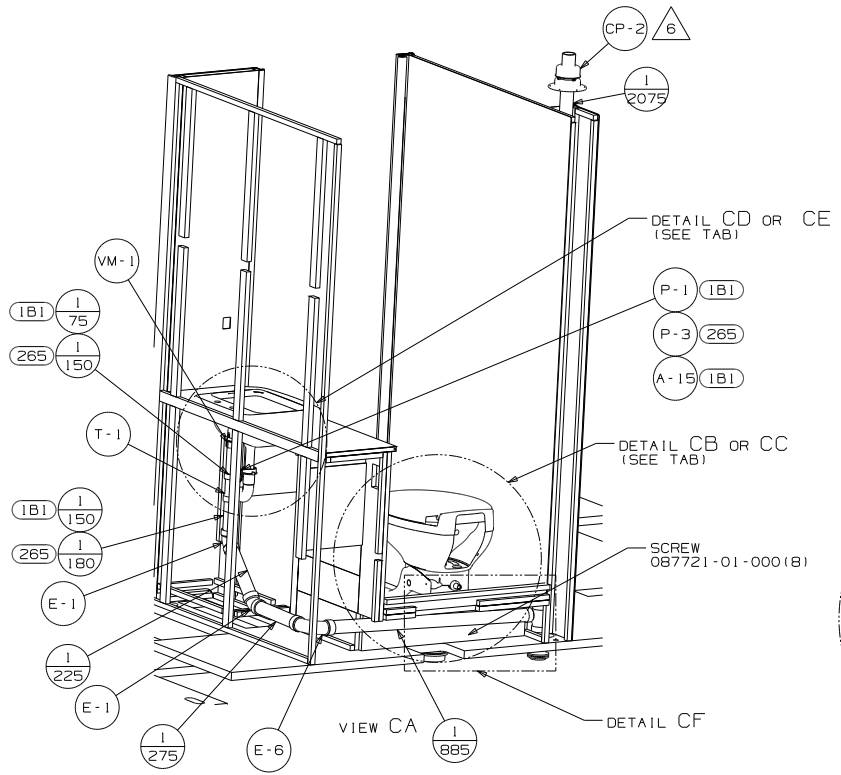
- STRAINER 086440-01-000
- SEALER 069640-01-000
- ADAPTER 165406-02-000
- WASHER-RUBBER 127440-02-CHT



DETAIL BB
(SHOWN W/OUT SHOWER & CABINETS)

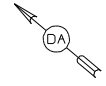
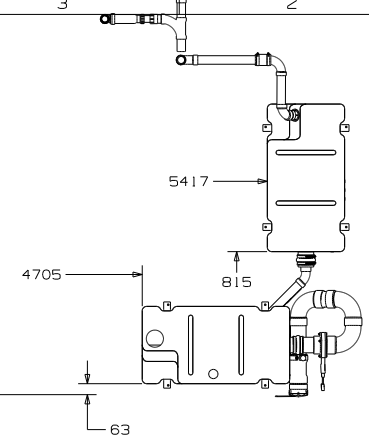
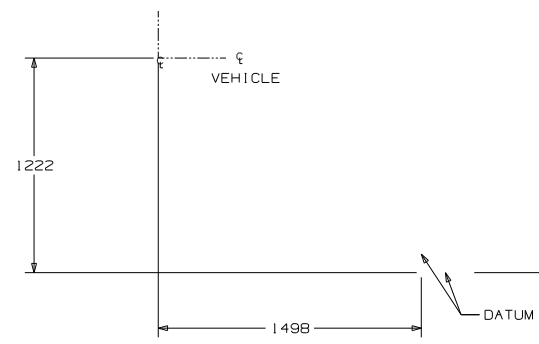
VIEW BA

PART USES		14 331K
DO NOT SCALE DRAWING		
TITLE: DRAINAGE SYSTEM INSTL		
SHEET 2	PART NO	186990



PART USED		14 331K	
DO NOT SCALE DRAWING			
TITLE: DRAINAGE SYSTEM INSTL			
SHEET 3	PART NO	186990	REV

FRONT AXLE

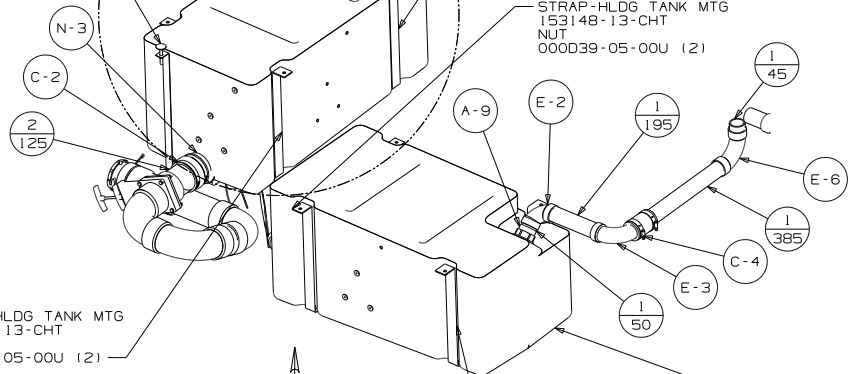


- HANGER-STRAP
140220-22-CHT
- BOLT
000C18-05-40U
- NUT
000D39-05-00U
- HOLDER-RING
141443-03-CHT
- BOLT
000C26-05-16U
- NUT
000D39-05-00U

DETAIL DB OR DC
(SEE TAB)

- STRAP-HLDG TANK MTG
153148-12-CHT
- NUT
000D39-05-00U (2)

- STRAP-HLDG TANK MTG
153148-13-CHT
- NUT
000D39-05-00U (2)

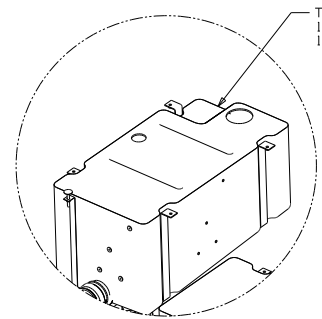


- STRAP-HLDG TANK MTG
153148-13-CHT
- NUT
000D39-05-00U (2)

VIEW DA

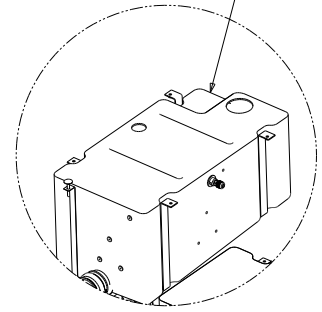
- STRAP-HLDG TANK MTG
153148-12-CHT
- NUT
000D39-05-00U (2)

- TANK-HOLDING
183786-02-000
- 183786-08-000



- TANK-HOLDING
183786-03-000
- 183786-09-000

DETAIL DB
(SEE TAB)



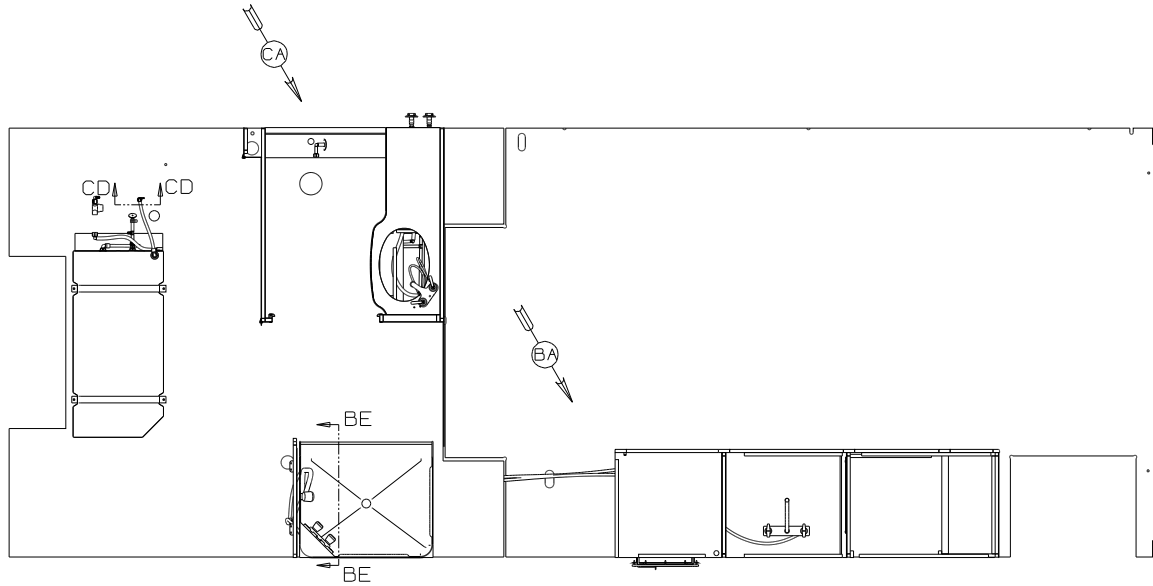
- TANK-HOLDING
183786-05-000

DETAIL DC
(SEE TAB)

FIRST USED	14 331K
DO NOT SCALE DRAWING	
TITLE: DRAINAGE SYSTEM INSTL	
SHEET 4	PART NO 186990 REV

DWG NO	MODEL	CF OR CG	BF OR BG	DETAIL CE
186991-01	331K	CF	BG	NO
186991-02	331KP	CG	BF	YES

RELEASE	REV/DATE	DWG NO	186991
REV ZONE	REVISION RECORD	DATE	DTR-016



- 10. NOT USED WITH 644.
- 9. FASTEN PLATFORM TO FLOOR AFTER SIDEWALL IS SET AND HEATER IS ATTACHED TO WALL.
- 8. ALL CRIMP FITTINGS TO 1/2" PEX TUBING REQUIRE 1/2" CLAMP 140171-03-000.
- 7. ALL CRIMP FITTINGS TO 5/8" PEX TUBING REQUIRE 5/8" CLAMP 140171-04-000.
- 6. LABEL HOT AND COLD SUPPLY TUBES AND TAPE FITTING TO TUBE BEFORE CABINET SET TO PREVENT MOVEMENT.
- 5. ADD PIPE WRAP (LADDER SCRAP 110157-02-000) INSULATION.
- 4. ADD TEFLON TAPE 010405-02-000.
- 3. ALL TUBING TO BE SECURED AT 1200 INTERVALS MAXIMUM WITH CLAMP 010495-01-000 AND SCREW 000667-10-12U OR EQUIVALENT.
- 2. TUBING TO BE INSTALLED WITH SUFFICIENT SLOPE TO PROVIDE DRAINAGE TO NEAREST VALVE.
- 1. PLASTIC FITTINGS TO BE SEALED WITH SEALANT 084456-01-000.

- 644 GREAT ALASKAN RENTAL PACKAGE
- 501 WATER PURIFIER WITHOUT
- 79W REFRIGERATOR-4 DOOR

WINNEBAGO INDUSTRIES, INC. COPYRIGHT 2014

QTR	ORIG. DATE
CHR	ALL DIMENSIONS ARE IN MILLIMETERS
P.E.	FIRST USED
W.E.	14 331K
CDR	

UNSPECIFIED TOLERANCES ARE:
 HOLE DIA (X) ± .3
 ONE-PLACE (X, X1) ± 1.5
 TWO-PLACE (X, X1) ± 0.50
 ANGLE ± 1°

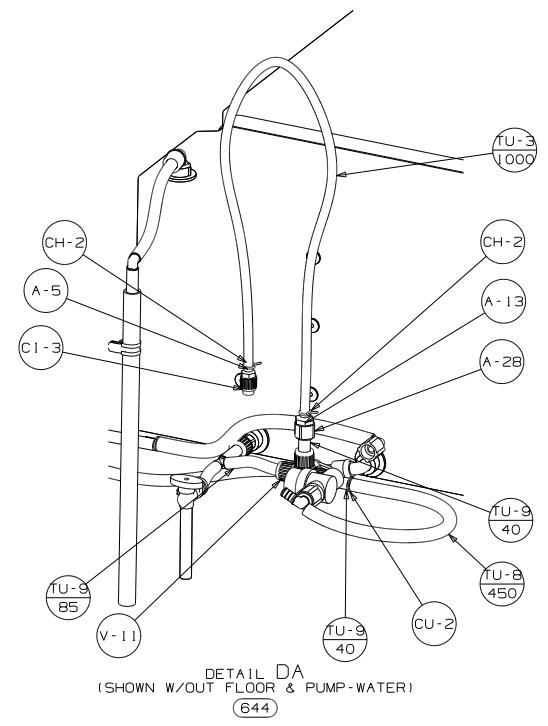
THIRD ANGLE PROJECTION

DO NOT SCALE DRAWING REFER TO ES0018 FOR FASTENER TIGHTENING GUIDELINES

TITLE: WATER SYSTEM INSTL

SHEET 1 of 4 PART NO 186991 REV

(X-X)
 FOR WATER CALLOUTS SEE DWG NO 116230-01-000



DETAIL DA
 (SHOWN W/OUT FLOOR & PUMP-WATER)
 (644)

FIRST USED	14 331K
DO NOT SCALE DRAWING	
TITLE: WATER SYSTEM INSTL	
SHEET 4	PART NO 186991 REV