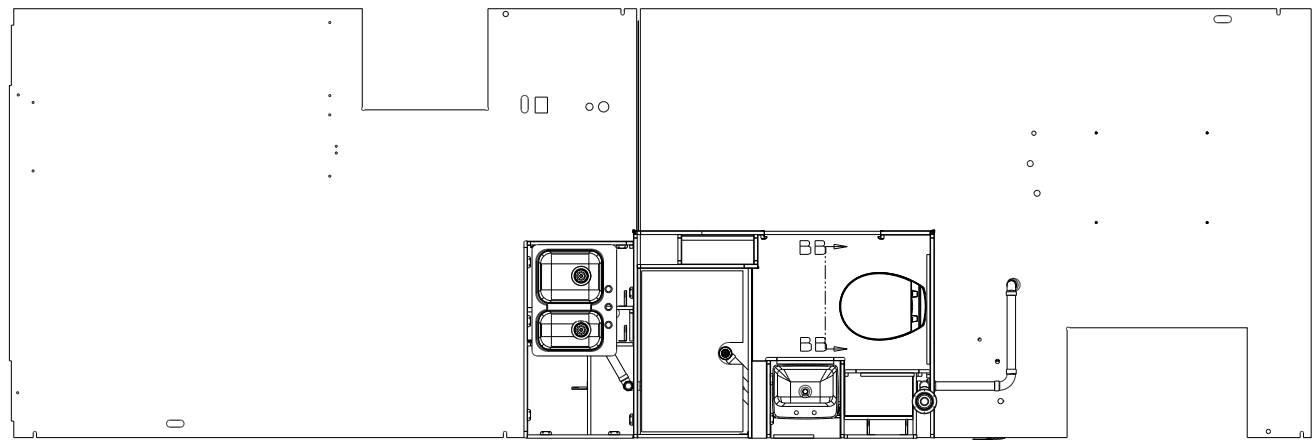
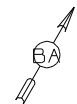


RELEASE	REV/DATE	DWG NO	190541
REV/ZONE	REVISION RECORD	DATE	DTR-016



- 13 CUT DOWN 90MM
- 12 SEE WIRING INSTL-BODY FOR ELECTRICAL CONNECTION.
- 11 PREP THE SURFACE PER MANUFACTURERS INSTRUCTIONS BEFORE APPLYING THE HEATING PAD.
- 10 WATERLESS P-TRAP MUST BE INSTALLED WITH THE RIBS POINTING DOWN.
  - 9. SEE DRAWING 061607 FOR INSTALLATION OF GROMMETS.
- 8. SECURE DRAINAGE PIPES TO CABINET USING WIRE TIE 108046-02-000, AND SCREW 000667-10-12U AT INTERVALS OF NOT OF NOT MORE THAN 4 FEET APART.
- 7 SECURE VENT PIPE TO FLOOR WITH CLAMP 062401-02-000 (2),SCREW 000667-10-12U (2), BRACKET 136878-01-CHT (2).
- 6 VENT PIPE MUST PROJECT 51 MIN AND 64 MAX ABOVE ROOF FOR PROPER FIT AND FUNCTION. ADD S-1 (116666-01-CHT SEAL-VENT PIPE) AROUND PIPE ON ROOF BEFORE VENT CAP IS INSTALLED.
- 5. SEAL AROUND SHOWER WITH SILICONE.
- 4 USE SMOOTH PLUMBERS PUTTY 167459-01-000 TO SEAL STRAINER (0.2 PER STRAINER).
- 3. ALL PIPE AND FITTINGS TO BE ASSEMBLED WITH SOLVENT 004020-01-000 (USA), 004020-02-000 (CAN)
- 2. SLOPE OF TRAP ARM MUST BE 6 PER 305 mm.
- 1. SLOPE OF HORIZONTAL PIPING TO BE MINIMUM OF 3 PER 305 mm.



- 181 CODES/STANDARDS USA
- 265 CODES/STANDARDS-CSA/CMVSS
- 231 DRAINAGE SYSTEM-HEATED
- 644 GREAT ALASKAN RENTALS

**WINNEBAGO** COPYRIGHT 2014 WINNEBAGO INDUSTRIES, INC.

DTR	ORIG. DATE
CHR	ALL DIMENSIONS ARE IN MILLIMETERS
F.E.	FIRST USED
W.E.	15 331H
DTR	MATERIAL

UNSPECIFIED TOLERANCES ARE:  
 HOLE DIA (X) + .3  
 ONE-PLACE (X,X) + 1.5  
 TWO-PLACE (X,X) + 0.50  
 ANGLE + .1°

THIRD ANGLE PROJECTION

DO NOT SCALE DRAWING REFER TO ES0018 FOR FASTENER TIGHTENING GUIDELINES

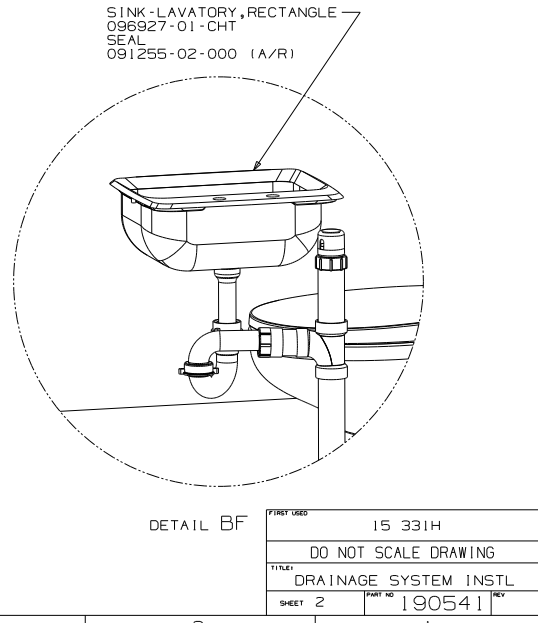
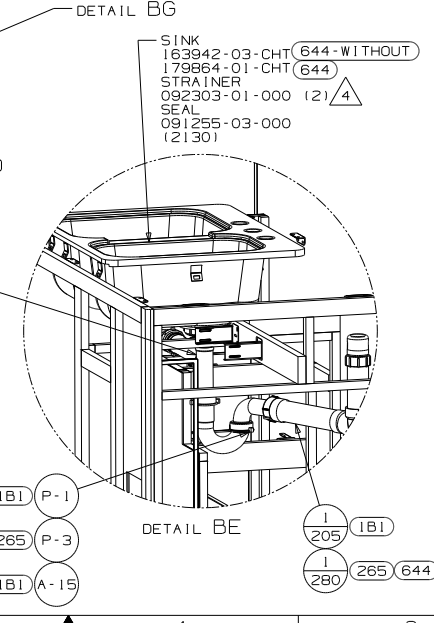
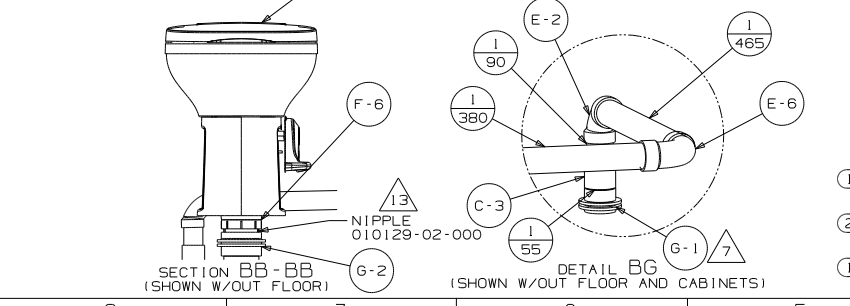
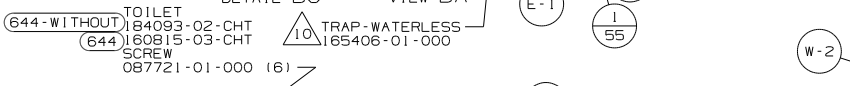
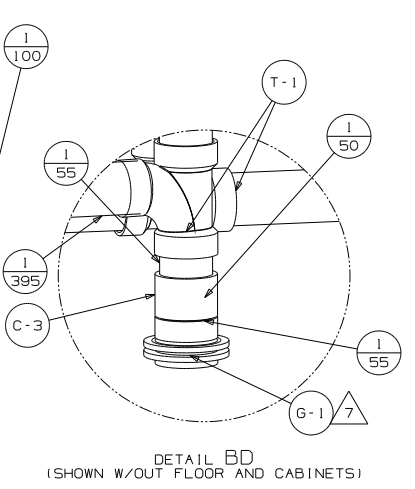
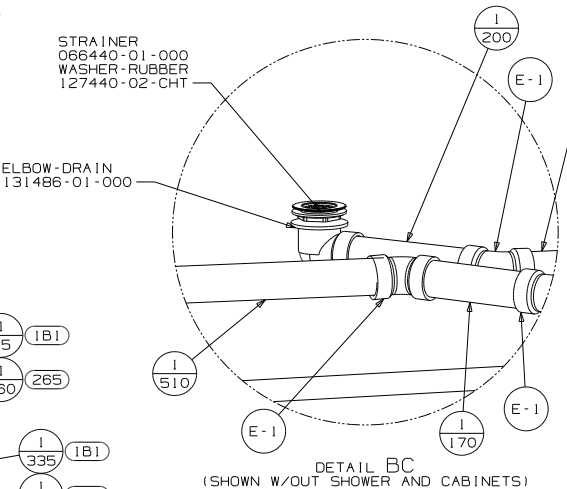
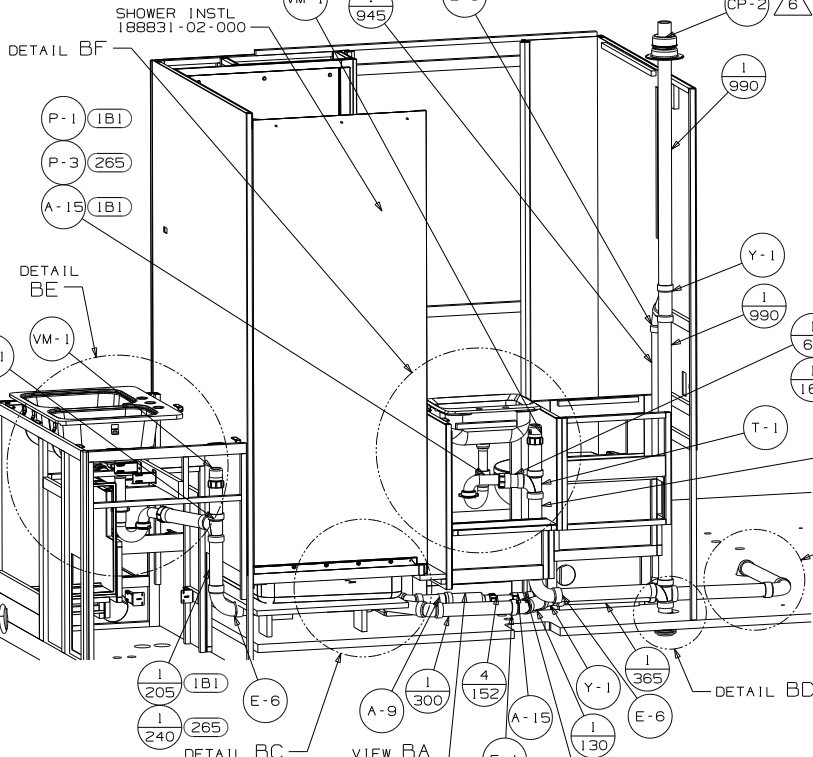
TITLE: DRAINAGE SYSTEM INSTL

SHEET 1 of 3 PART NO 190541 REV

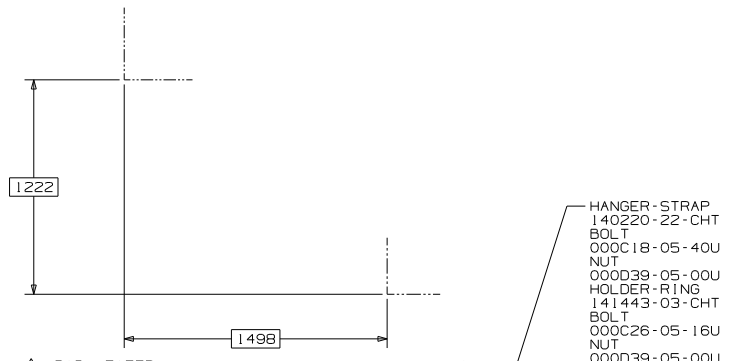
184744P 1

FOR DRAINAGE CALLOUTS SEE DWG NO 116229-01-000

NOTES:

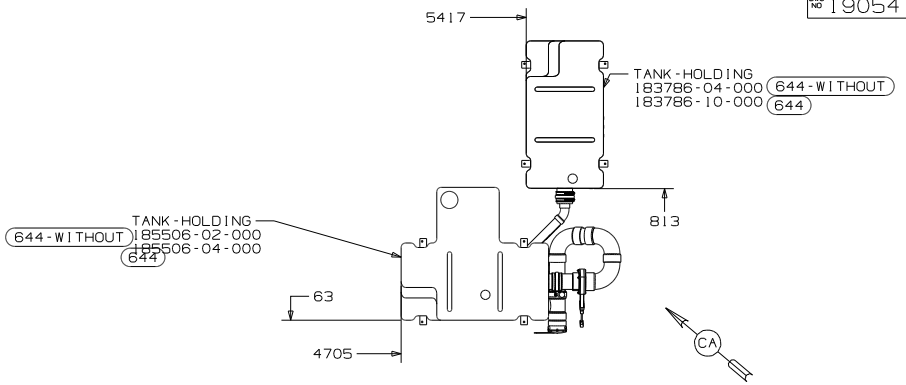
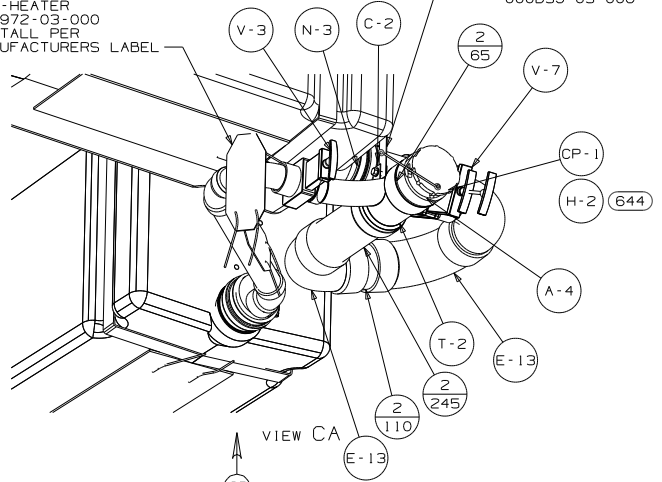


PART USES		15 331H
DO NOT SCALE DRAWING		
TITLE DRAINAGE SYSTEM INSTL		
SHEET 2	PART NO	190541 REV



- HANGER-STRAP  
140220-22-CHT
- BOLT  
000C18-05-40U
- NUT  
000D39-05-00U
- HOLDER-RING  
141443-03-CHT
- BOLT  
000C26-05-16U
- NUT  
000D39-05-00U

23T 11 12  
PAD-HEATER  
133972-03-000  
INSTALL PER  
MANUFACTURERS LABEL



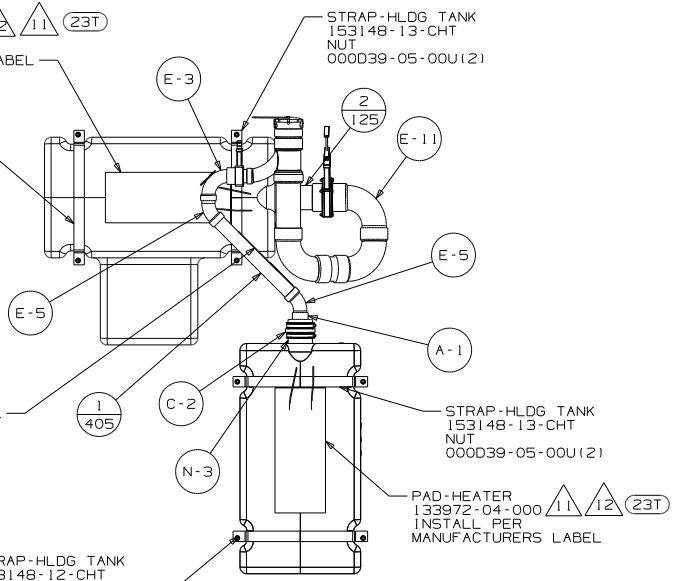
644-WITHOUT  
TANK-HOLDING  
185506-02-000  
185506-04-000

PAD-HEATER  
133972-04-000  
INSTALL PER  
MANUFACTURERS LABEL

STRAP-HLDG TANK  
153148-12-CHT  
NUT  
000D39-05-00U(2)

12 11 23T  
PAD-HEATER  
133972-03-000  
INSTALL PER  
MANUFACTURERS LABEL

STRAP-HLDG TANK  
153148-12-CHT  
NUT  
000D39-05-00U(2)

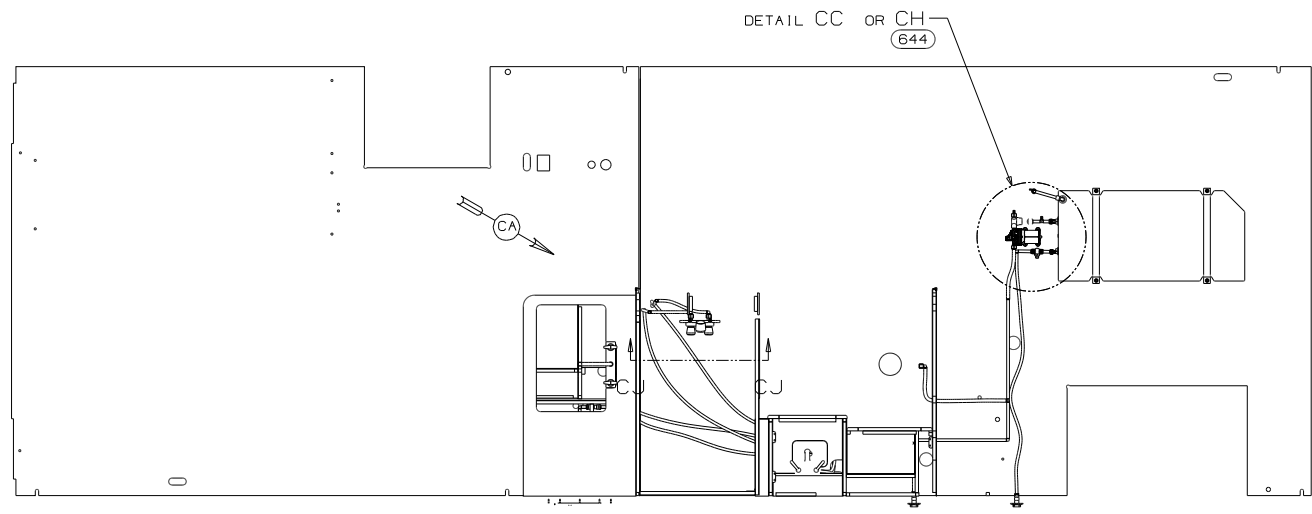


VIEW CB

FIRST USED		15 331H	
DO NOT SCALE DRAWING			
TITLE: DRAINAGE SYSTEM INSTL			
SHEET 3	PART NO	190541 REV	

DWG NO	DETAIL	DETAIL	DETAIL	MODEL
184749-01	BD	---	CE	231H
184749-02	BE	BF	CF	231HP

RELEASE	REV/DATE	DWG NO
		184749
REV ZONE	REVISION RECORD	DATE



9. ALL CRIMP FITTINGS TO 3/4" PEX TUBING REQUIRE 3/4" CLAMP 140171-05-000.
8. ALL CRIMP FITTINGS TO 1/2" PEX TUBING REQUIRE 1/2" CLAMP 140171-03-000.
7. ALL CRIMP FITTINGS TO 5/8" FLEX TUBING REQUIRE 5/8" CLAMP 140171-04-000.
6. LABEL HOT AND COLD SUPPLY TUBES AND TAPE FITTING TO TUBE BEFORE CABINET SET TO PREVENT MOVEMENT.
5. ADD PIPE WRAP (LADDER SCRAP 110157-02-000) INSULATION.
4. ADD TEFLON TAPE 010405-02-000.
3. ALL TUBING TO BE SECURED AT 1200 INTERVALS MAXIMUM WITH CLAMP 010495-01-000 AND SCREW 000667-10-12U OR EQUIVALENT.
2. TUBING TO BE INSTALLED WITH SUFFICIENT SLOPE TO PROVIDE DRAINAGE TO NEAREST VALVE.
1. PLASTIC FITTINGS TO BE SEALED WITH SEALANT 084456-01-000.

(644) GREAT ALASKAN RENTAL PACKAGE

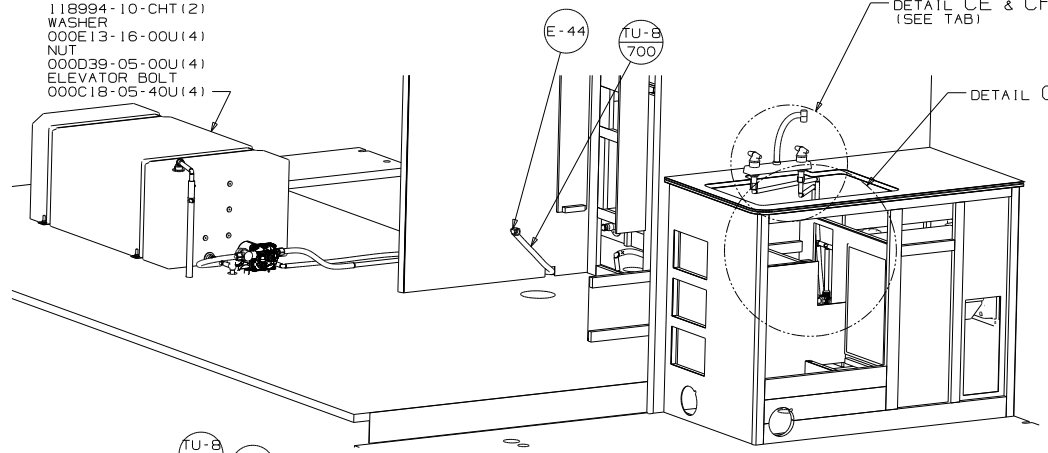
<b>WINNEBAGO</b> COPYRIGHT 2014 WINNEBAGO INDUSTRIES, INC.	
QTR	ORIG. DATE
CHR	ALL DIMENSIONS ARE IN MILLIMETERS
P.E.	FIRST USED
W.E.	
CDR	14 331H
UNSPECIFIED TOLERANCES ARE:	
SIZE DIM (X)	MATERIAL
ONE-PLACE (X,XX)	1 1.5
TWO-PLACE (X,XXX)	0.50
ANGLE	1°
THIRD ANGLE PROJECTION	
DO NOT SCALE DRAWING	REFER TO ES0018 FOR FASTENER TIGHTENING GUIDELINES
TITLE:	WATER SYSTEM INSTL
SHEET 1 of 3	PART NO 184749 REV
REF: 178495L 1	

(X-X)  
FOR WATER CALLOUTS SEE DWG NO 116230-01-000

NOTES:

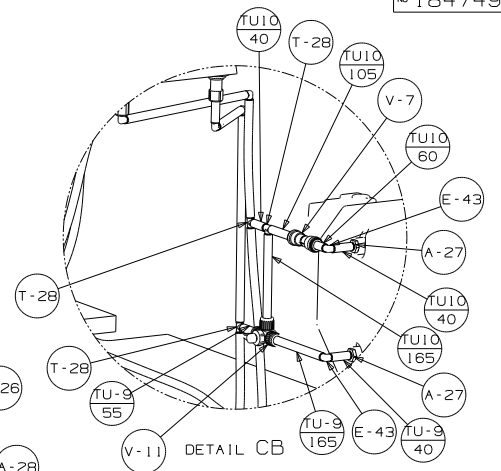
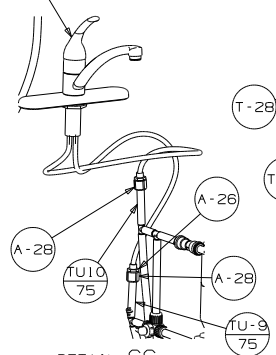


- TANK ASM-WATER, 47 GAL
- 183814-02-000
- 183814-03-000 (644)
- STRAP
- 118994-10-CHT (2)
- WASHER
- 000E13-16-00U (4)
- NUT
- 000D39-05-00U (4)
- ELEVATOR BOLT
- 000C18-05-40U (4)

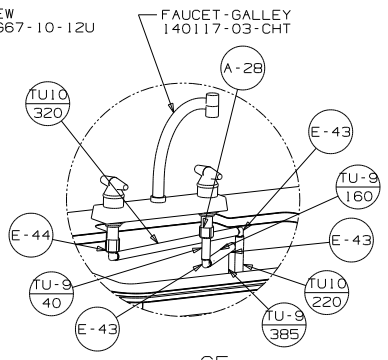
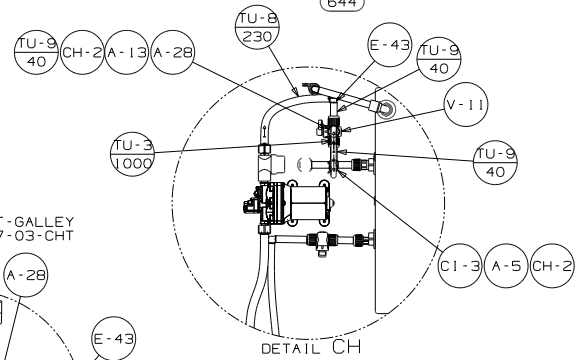
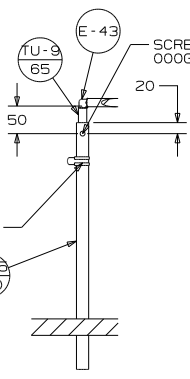
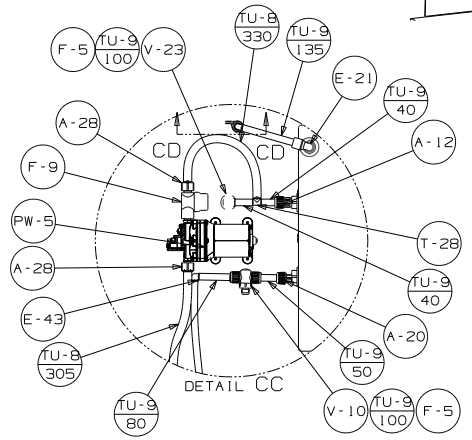
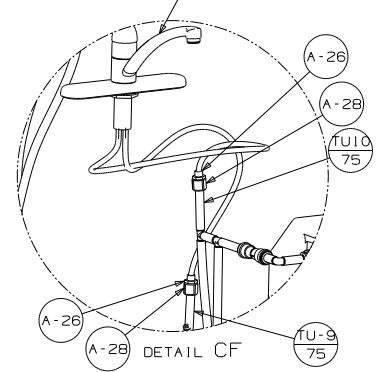


VIEW CA

FAUCET-GALLEY 149164-01-CHT



FAUCET-GALLEY 149164-01-CHT



PART USED		14 331H
DO NOT SCALE DRAWING		
TITLE		
WATER SYSTEM INSTL		
SHEET 3	PART NO	184749 REV