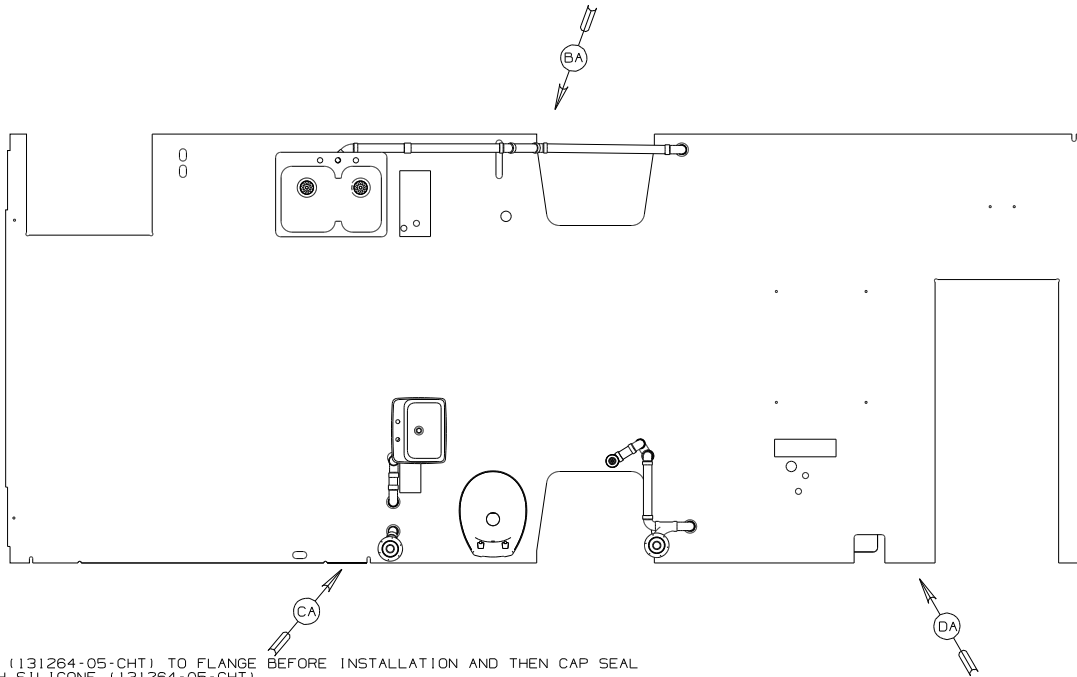


DWG NO	MODEL	DETAIL BB OR BC	DETAIL CB OR CC	DETAIL CE OR CF	DETAIL CG OR CH	DETAIL DC OR DD	DETAIL DE OR DF
191123-01	3270	BB	CB	CE	CG	DC	DE
191123-02	3270P	BC	CC	CF	CH	DD	DF

RELEASE	REV/DATE	DWG NO	191123
REV/ZONE	REVISION RECORD	DATE	DTR-016



- 13. APPLY 1/4" BEAD OF SILICONE (131264-05-CHT) TO FLANGE BEFORE INSTALLATION AND THEN CAP SEAL SINK/COLIAN COUNTER TOP WITH SILICONE (131264-05-CHT).
- 12. CUT PART TO 90mm.
- 11. PREP THE SURFACE PER MANUFACTURERS INSTRUCTIONS BEFORE APPLYING THE HEATING PAD.
- 10. SEE WIRING INSTL-BODY FOR ELECTRICAL CONNECTION.
- 9. SEE DRAWING 061607 FOR INSTALLATION OF GROMMETS.
- 8. SECURE DRAINAGE PIPES TO CABINET USING WIRE TIE 108046-02-000, AND SCREW 000667-10-12U AT INTERVALS OF NOT MORE THAN 4 FEET APART.
- 7. SECURE VENT PIPE TO FLOOR WITH CLAMP 062401-02-000 (2), SCREW 000667-10-12U (2), BRACKET 136878-01-CHT (2).
- 6. VENT PIPE MUST PROJECT 51 MIN AND 64 MAX ABOVE ROOF FOR PROPER FIT AND FUNCTION. ADD S-1 (116666-01-CHT SEAL-VENT PIPE) AROUND PIPE ON ROOF BEFORE VENT CAP IS INSTALLED.
- 5. SEAL AROUND SHOWER WITH SILICONE.
- 4. USE SMOOTH PLUMBERS PUTTY 167459-01-000 TO SEAL STRAINER (0.2 PER STRAINER).
- 3. ALL PIPE AND FITTINGS TO BE ASSEMBLED WITH SOLVENT 004020-01-000 (USA), 004020-02-000 (CAN)
- 2. SLOPE OF TRAP ARM MUST BE 6 PER 305 mm.
- 1. SLOPE OF HORIZONTAL PIPING TO BE MINIMUM OF 3 PER 305 mm.

- (644) GREAT ALASKAN RENTAL PACKAGE
- (640) RENTAL - GAH WITHOUT
- (285) CODES/STANDARDS-CSA/CMVSS
- (23T) DRAINAGE SYSTEM-HEATED
- (1B1) CODES/STANDARDS USA

WINNEBAGO COPYRIGHT 2014 WINNEBAGO INDUSTRIES, INC.

DTR	ORIG. DATE
CHR	ALL DIMENSIONS ARE IN MILLIMETERS
P.E.	FIRST USED
W.E.	15 3270 / OP
DTR	

UNSPECIFIED TOLERANCES ARE:	MATERIAL
HOLES (Ø) 1.3	
ONE-PLACE (X, Y) 1.5	
TWO-PLACE (X, Y) 0.50	
ANGLE 1°	

THIRD ANGLE PROJECTION

DO NOT SCALE DRAWING REFER TO ES0018 FOR FASTENER TIGHTENING GUIDELINES

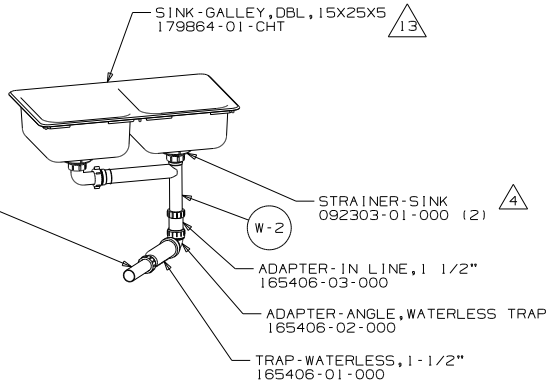
TITLE: DRAINAGE SYSTEM INSTL

SHEET 1 of 5 PART NO 191123 REV

REF: 186159T 1

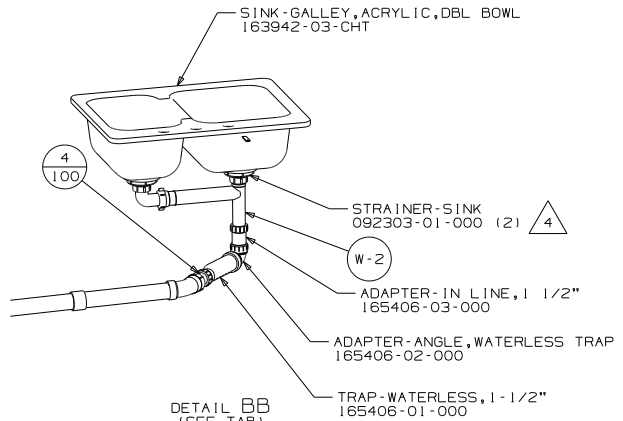
FOR DRAINAGE CALLOUTS SEE DWG NO 116229-01-000

NOTES:

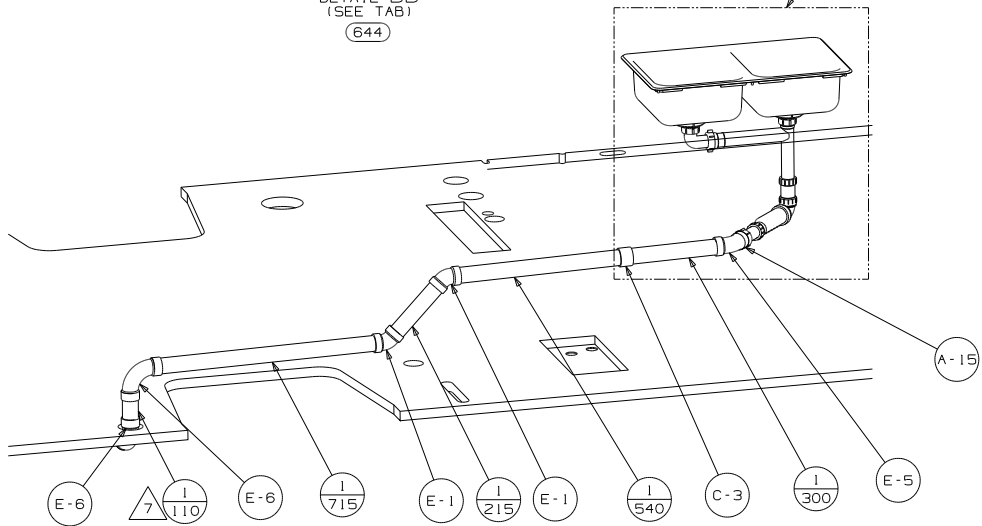


DETAIL BB
(SEE TAB)
644

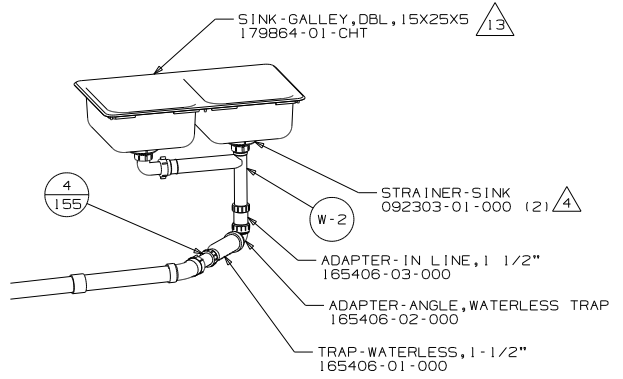
SEE TAB FOR
DETAIL BB OR
DETAIL BC



DETAIL BB
(SEE TAB)
640

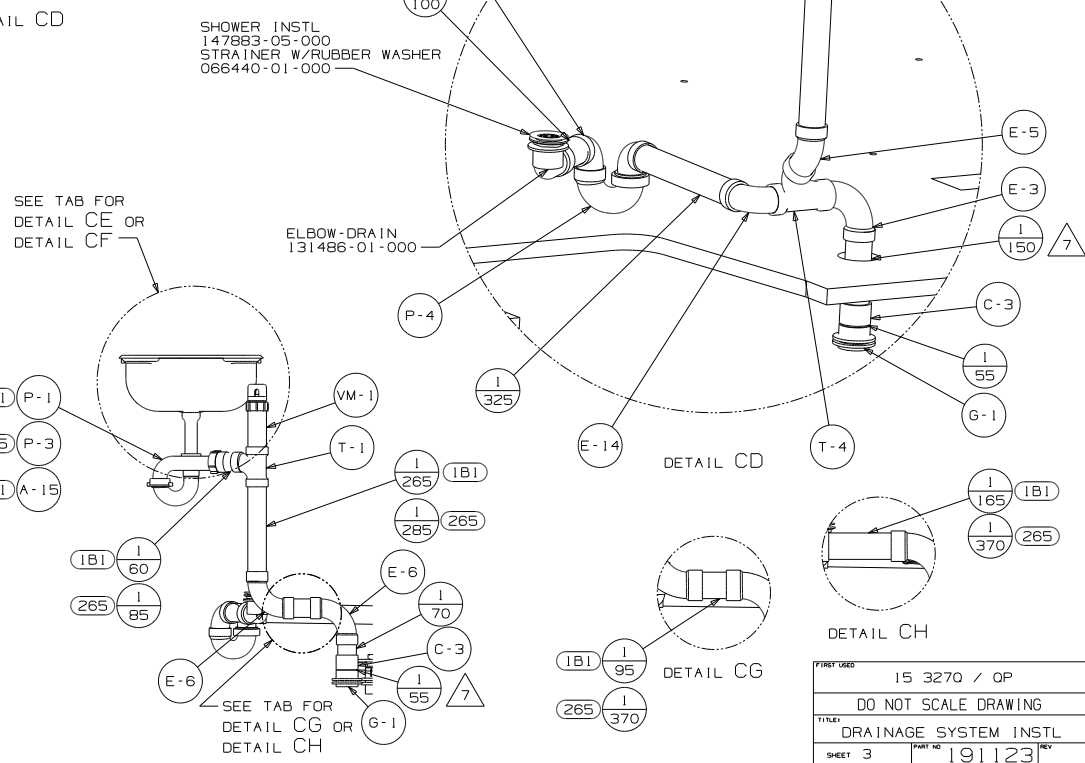
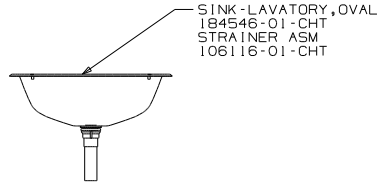
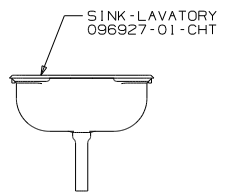
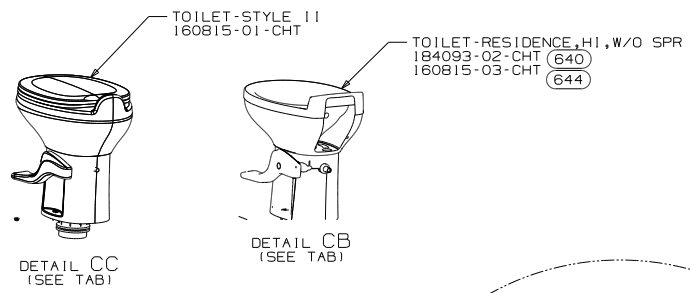
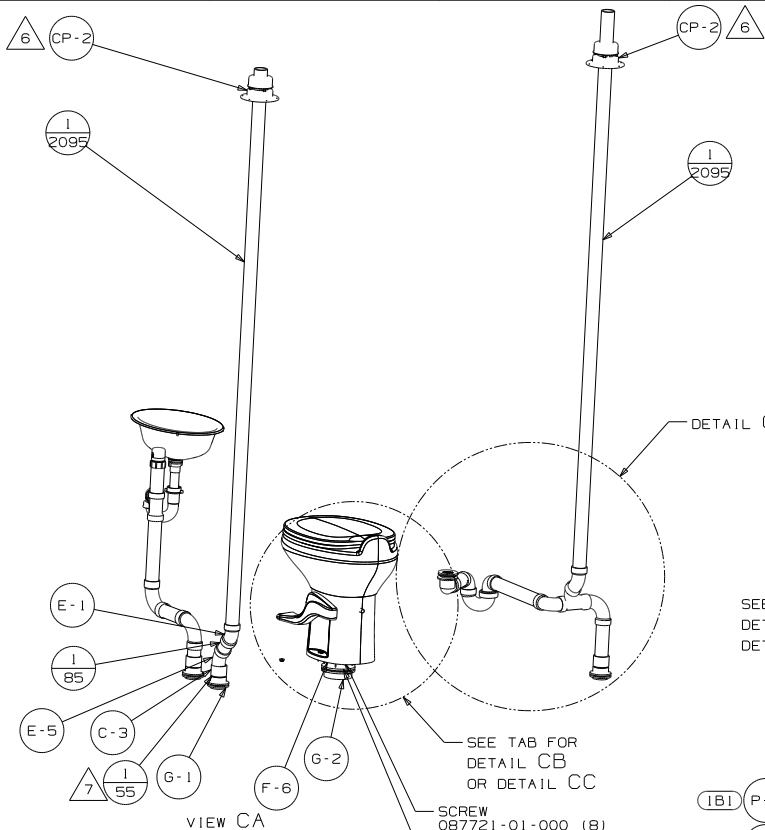


VIEW BA

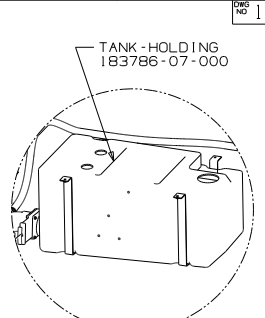
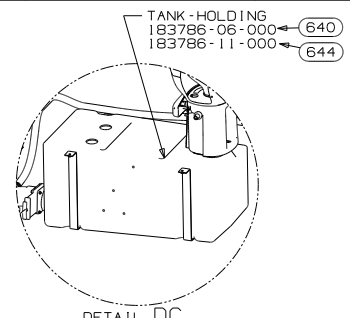
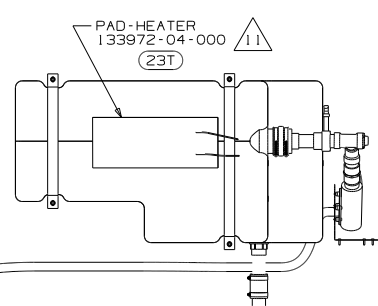
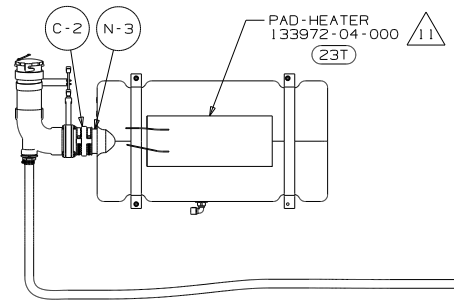


DETAIL BC
(SEE TAB)

FIRST USED		15 3270 / OP	
DO NOT SCALE DRAWING			
TITLE: DRAINAGE SYSTEM INSTL			
SHEET 2	PART NO	191123	REV



FIRST USES	15 3270 / OP
DO NOT SCALE DRAWING	
TITLE DRAINAGE SYSTEM INSTL	
SHEET 3	PART NO 191123 REV



VIEW DB

DETAIL DC
(SEE TAB)

DETAIL DD
(SEE TAB)

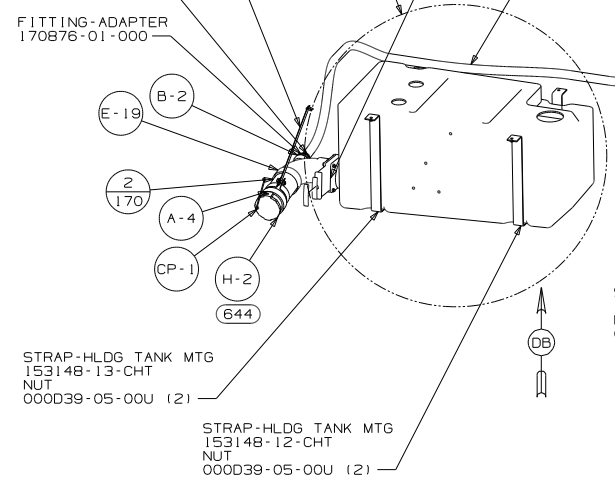
SEE TAB FOR
DETAIL DC OR DD

SEE TAB FOR
DETAIL DE OR DF

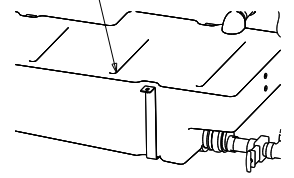
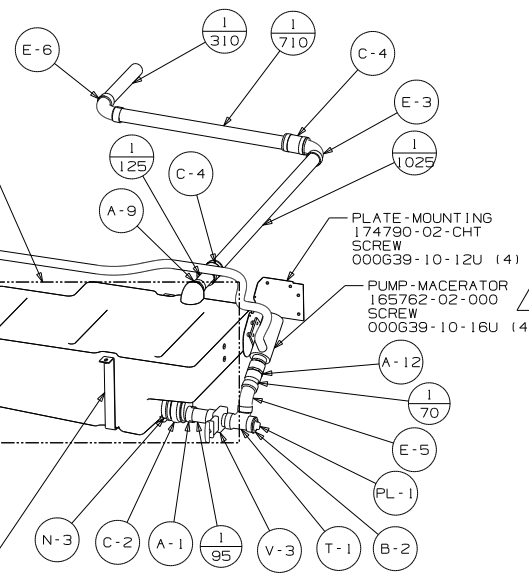
- STRAP-W/HOLES
133939-06-CHT
- HOLDER-RING
141443-05-CHT
- SCREW
000639-08-12U (2)
- BOLT
000C26-05-16U
- NUT
000D39-05-00U
- CLAMP-HOSE WORMGEAR
062401-01-000
- FITTING-ADAPTER
170876-01-000

- HOSE
177021-01-000
(4270)
- WIRE TIE MACERATOR PUMP
HOSE UP TO THE CHASSIS
FRAME ASM)

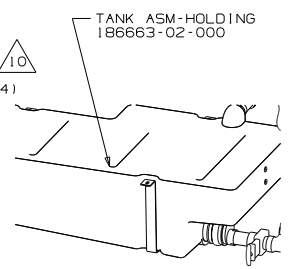
- TANK ASM-HOLDING
186663-02-000 (640)
- 186663-03-000 (644)



VIEW DA

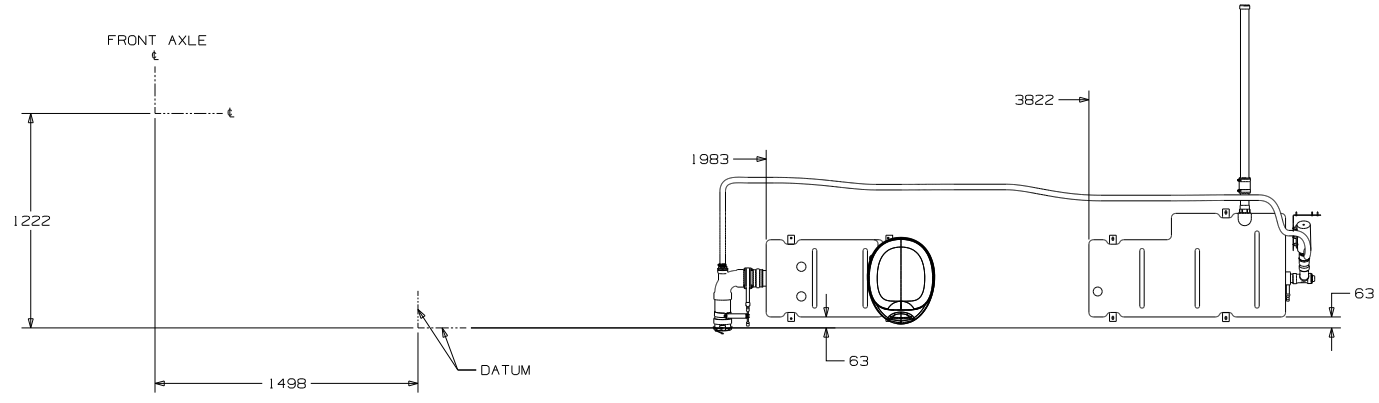


DETAIL DE
(SEE TAB)



DETAIL DF
(SEE TAB)

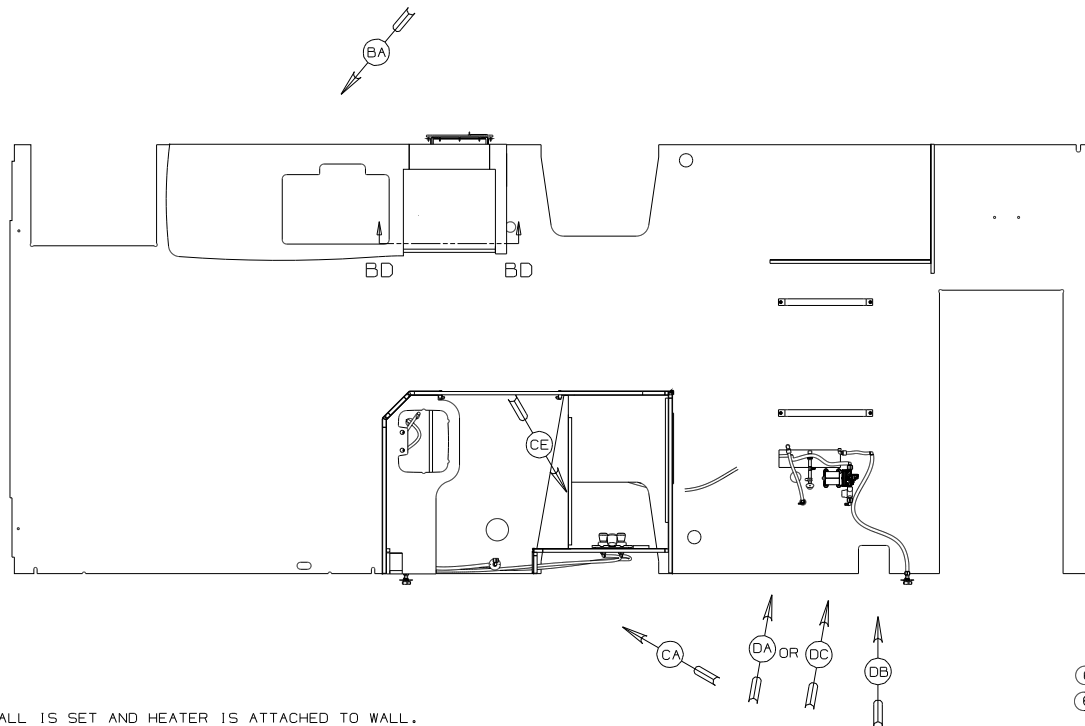
FIRST USES	15 3270 / OP
DO NOT SCALE DRAWING	
TITLE: DRAINAGE SYSTEM INSTL	
SHEET 4	PART NO 191123 REV



FIRST USED	15 3270 / OP
DO NOT SCALE DRAWING	
TITLE: DRAINAGE SYSTEM INSTL	
SHEET 5	PART NO 191123 REV

DWG NO	MODEL	DETAIL BB OR BC	DETAIL CB OR CC	DETAIL DA OR DC
191133-01	327Q	BB	CC	DA
191133-02	327QP	BC	CB	DC

RELEASE	REV/DATE	DWG NO	191133
REV ZONE	REVISION RECORD	DATE	DTR-016



- ③ FASTEN PLATFORM TO FLOOR AFTER SIDEWALL IS SET AND HEATER IS ATTACHED TO WALL.
- 8. ALL CRIMP FITTINGS TO 1/2" PEX TUBING REQUIRE 1/2" CLAMP 140171-03-000.
- 7. ALL CRIMP FITTINGS TO 5/8" PEX TUBING REQUIRE 5/8" CLAMP 140171-04-000.
- ⑥ LABEL HOT AND COLD SUPPLY TUBES AND TAPE FITTING TO TUBE BEFORE CABINET SET TO PREVENT MOVEMENT.
- ⑤ ADD PIPE WRAP (LADDER SCRAP 110157-02-000) INSULATION.
- ④ ADD TEFLON TAPE 010405-02-000.
- 3. ALL TUBING TO BE SECURED AT 1200 INTERVALS MAXIMUM WITH CLAMP 010495-01-000 AND SCREW 000667-10-12U OR EQUIVALENT.
- 2. TUBING TO BE INSTALLED WITH SUFFICIENT SLOPE TO PROVIDE DRAINAGE TO NEAREST VALVE.
- 1. PLASTIC FITTINGS TO BE SEALED WITH SEALANT 084456-01-000.

- ⑥40 RENTAL - GAH WITHOUT
- ⑥44 GREAT ALASKAN RENTAL PACKAGE

WINNEBAGO COPYRIGHT 2014 WINNEBAGO INDUSTRIES, INC.

DTR	ORIG. DATE
CHR	ALL DIMENSIONS ARE IN MILLIMETERS
F.E.	FIRST USED
W.E.	15 327Q / OP
DTR	

UNSPECIFIED TOLERANCES ARE:
 HOLE DIA (X) ± .3
 ONE-PLACE (X,X1) ± 1.5
 TWO-PLACE (X,X2) ± 0.50
 ANGLE ± 1°

THIRD ANGLE PROJECTION

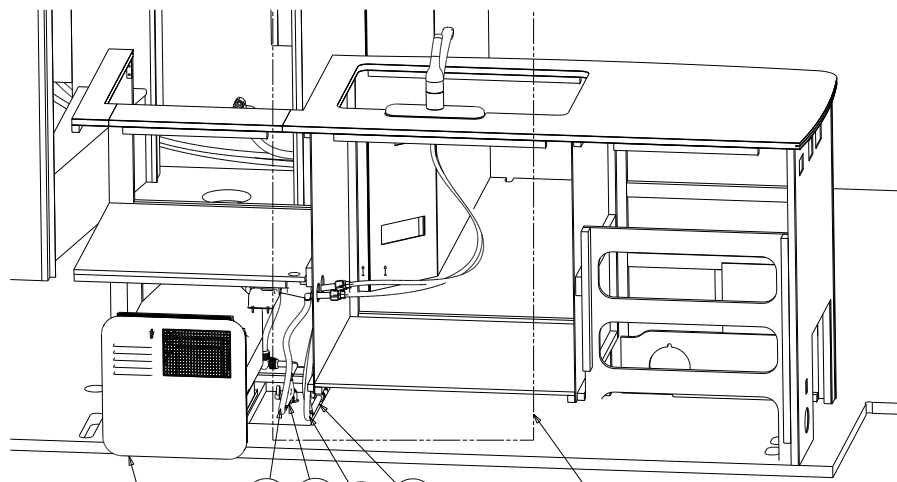
DO NOT SCALE DRAWING

TITLE: WATER SYSTEM INSTL

SHEET 1 of 4 PART NO 191133 REV

REF: 186162Z 1

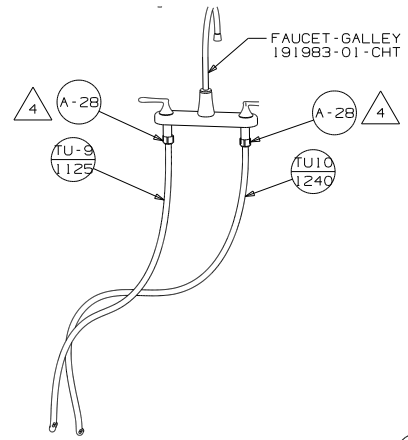
FOR WATER CALLOUTS SEE DWG NO 116230-01-000



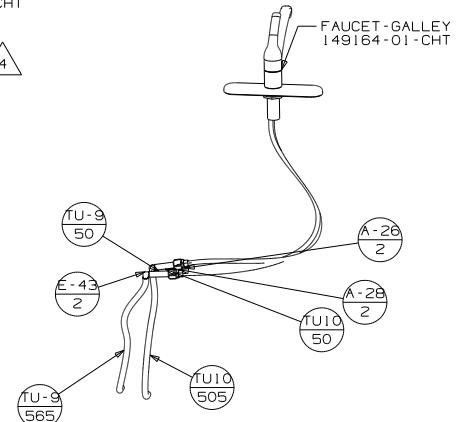
T-28
TU-9
70
T-28
TU10
125

VIEW BA

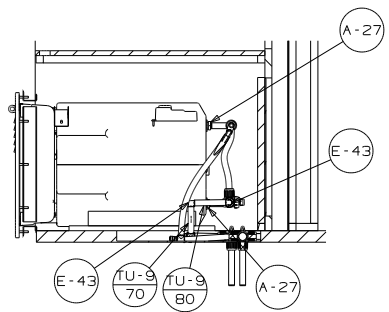
SEE TAB FOR
VIEW BB OR
VIEW BC



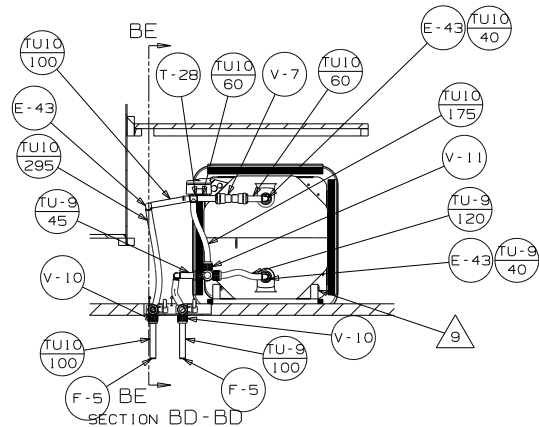
DETAIL BB
(SEE TAB)
640



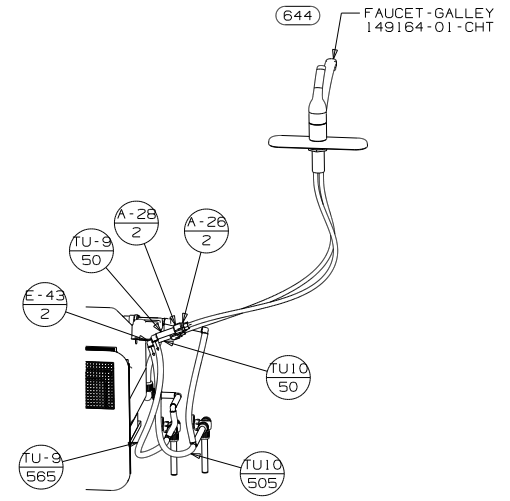
DETAIL BB
(SEE TAB)
644



SECTION BE-BE

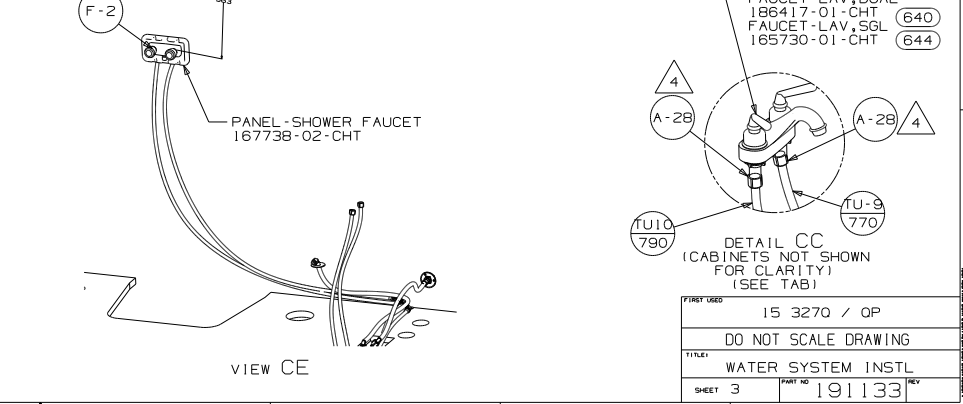
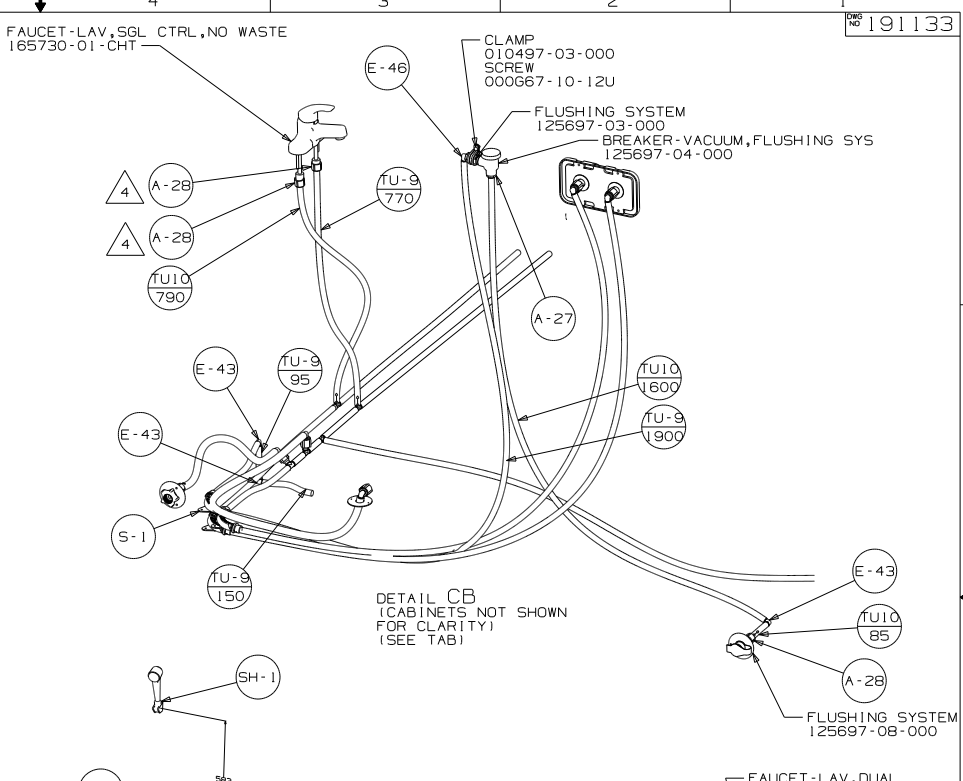
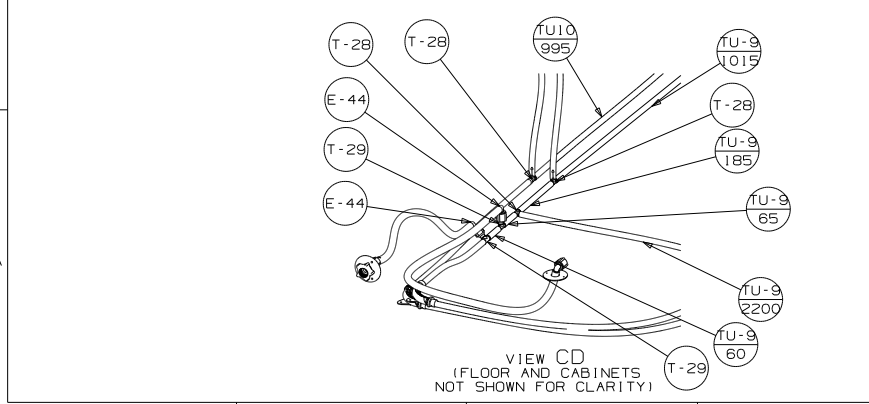
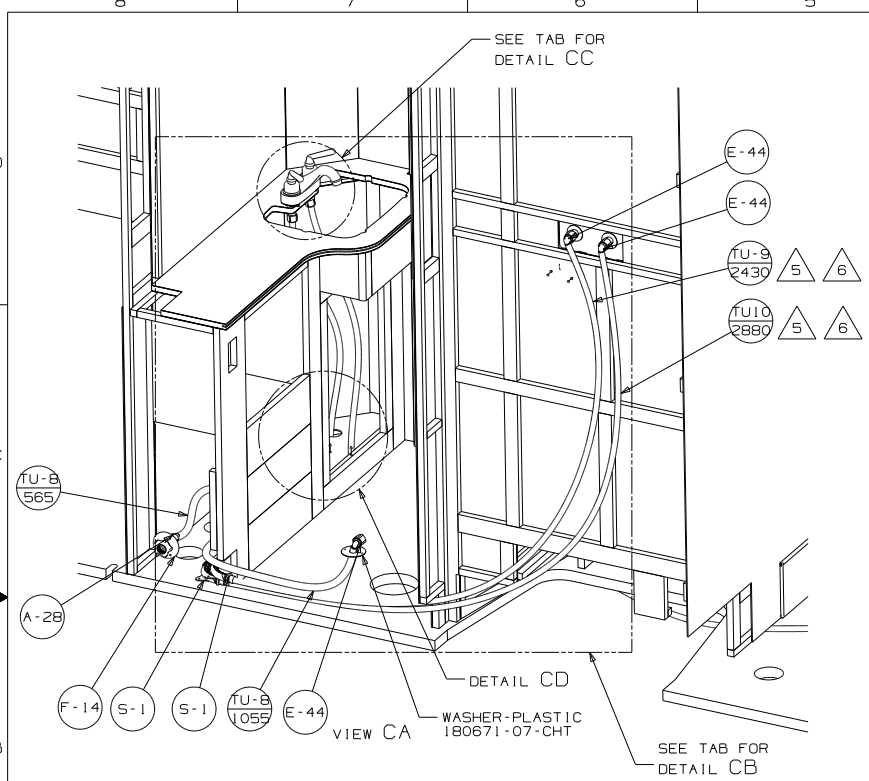


SECTION BD-BD



DETAIL BC
(SEE TAB)

PART USED		15 3270 / OP	
DO NOT SCALE DRAWING			
TITLE: WATER SYSTEM INSTL			
SHEET 2	PART NO	191133	REV



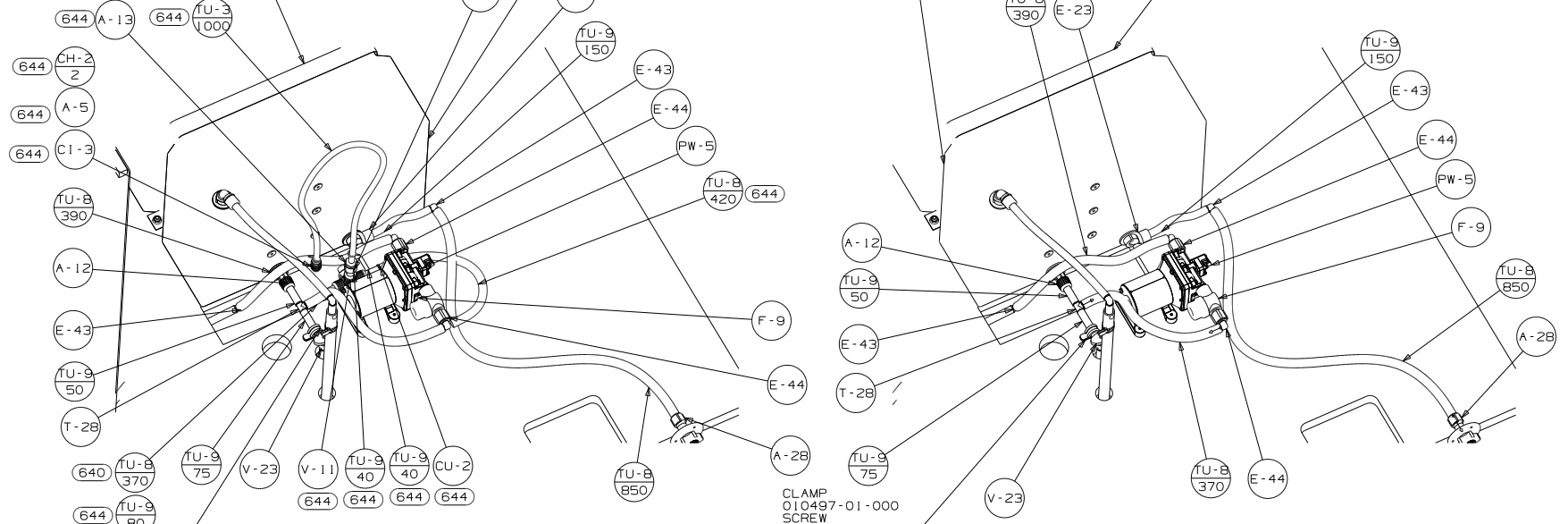
PART USES	15 3270 / OP	
DO NOT SCALE DRAWING		
TITLE:	WATER SYSTEM INSTL	
SHEET 3	PART NO	191133 REV

STRAP-TANK, WATER
118994-16-CHT (2)
NUT
000D39-05-00U (4)

TANK ASM-WATER, 44 GAL
183814-02-000 (640)
183814-03-000 (644)

TANK ASM-WATER, 44 GAL
183814-02-000

STRAP-TANK, WATER
118994-16-CHT (2)
NUT
000D39-05-00U (4)

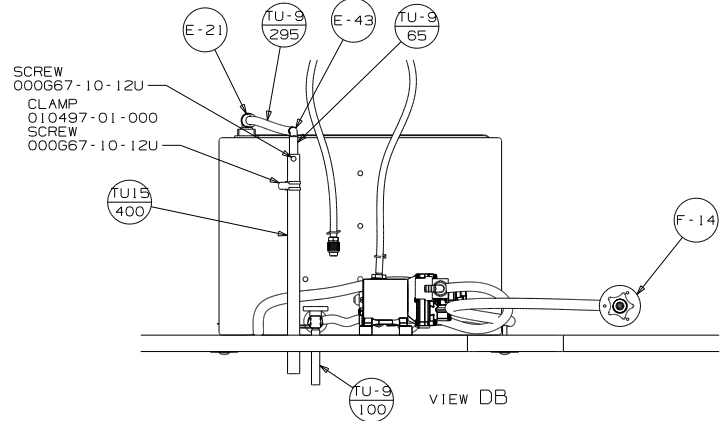


CLAMP
010497-01-000
SCREW
000667-10-12U

VIEW DA
(SEE TAB)

CLAMP
010497-01-000
SCREW
000667-10-12U

VIEW DC
(SEE TAB)



SCREW
000667-10-12U
CLAMP
010497-01-000
SCREW
000667-10-12U

VIEW DB

FIRST USED		15 3270 / OP	
DO NOT SCALE DRAWING			
TITLE: WATER SYSTEM INSTL			
SHEET 4	PART NO	191133	REV