

- 1. SLOPE OF HORIZONTAL PIPING TO BE MINIMUM OF 3 PER 305 mm.
- 2. SLOPE OF TRAP ARM MUST BE 6 PER 305 mm.
- 3. ALL PIPE AND FITTINGS TO BE ASSEMBLED WITH SOLVENT 004020-01-000 (USA), 004020-02-000 (CAN)
- 4. USE SMOOTH PLUMBERS PUTTY 167459-01-000 TO SEAL STRAINER (0.2 PER STRAINER).
- 5. SEAL AROUND SHOWER WITH SILICONE.
- 6. VENT PIPE MUST PROJECT 51 MIN AND 64 MAX ABOVE ROOF FOR PROPER FIT AND FUNCTION. ADD S-1 (116666-01-CHT SEAL-VENT PIPE) AROUND PIPE ON ROOF BEFORE VENT CAP IS INSTALLED.
- 7. SECURE VENT PIPE TO FLOOR WITH CLAMP 062401-02-000 (2), SCREW 000667-10-12U (2), BRACKET 136878-01-CHT (2).
- 8. SECURE DRAINAGE PIPES TO CABINET USING WIRE TIE 108046-02-000, AND SCREW 000667-10-12U AT INTERVALS OF NOT OF NOT MORE THAN 4 FEET APART.
- 9. SEE DRAWING 061607 FOR INSTALLATION OF GROMMETS.
- 10. SEE WIRING INSTL-BODY FOR ELECTRICAL CONNECTION.
- 11. PREP THE SURFACE PER MANUFACTURERS INSTRUCTIONS BEFORE APPLYING THE HEATING PAD.
- 12. CUT PART TO 90MM.

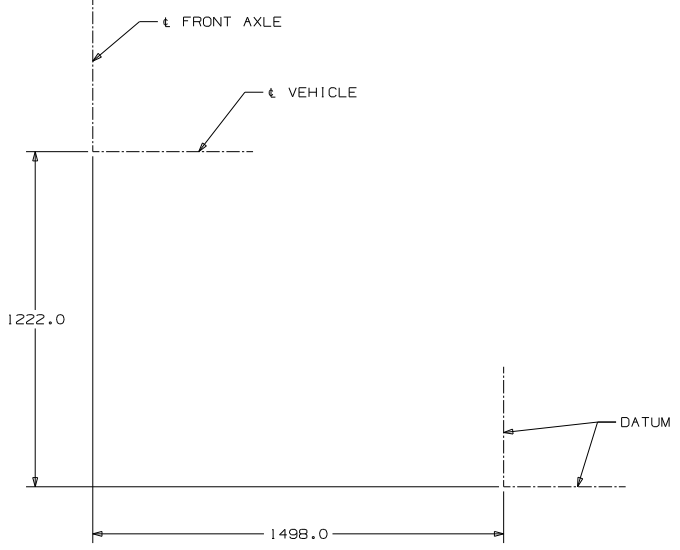
- (644) GREAT ALASKAN RENTAL PACKAGE
- (265) CODES/STANDARDS-CSA/CMVSS
- (23T) DRAINAGE SYSTEM-HEATED
- (IB1) CODES/STANDARDS USA

WINNEBAGO COPYRIGHT 2014 WINNEBAGO INDUSTRIES, INC.

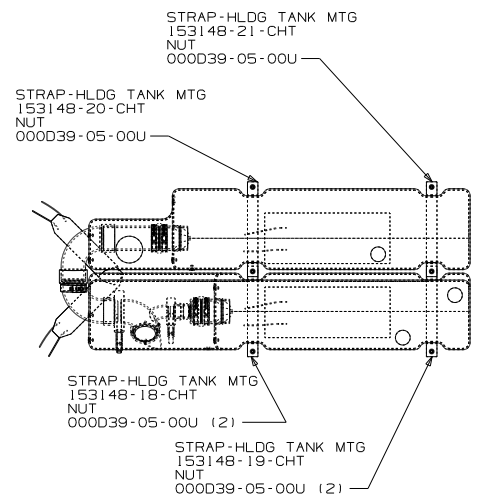
DTR	ORIG. DATE
CHR	ALL DIMENSIONS ARE IN MILLIMETERS
P.E.	FIRST USED
W.E.	
DTR	14 322R
UNSPECIFIED TOLERANCES ARE:	
SIZE DIM (X)	MATERIAL
ONE-PLACE (X,XX)	1 1.5
TWO-PLACE (X,XXX)	0.50
ANGLE	1°
THIRD ANGLE PROJECTION	
DO NOT SCALE DRAWING	REFER TO ES0016 FOR FASTENER TIGHTENING SCHEDULES
TITLE:	DRAINAGE SYSTEM INSTL
SHEET 1 of 3	PART NO 185534 REV

FOR DRAINAGE CALLOUTS SEE DWG NO 116229-01-000

NOTES:



VIEW CC

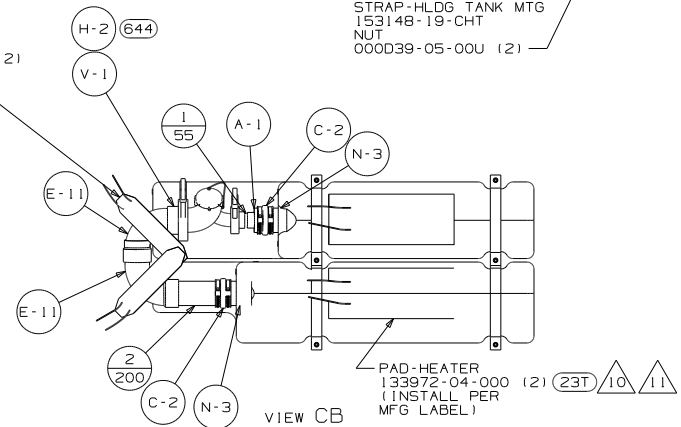


- HANGER-STRAP
140220-06-CHT
- NUT
000D39-05-00U
- HOLDER-RING
141443-05-CHT
- BOLT
000C26-05-16U
- NUT
000D39-05-00U

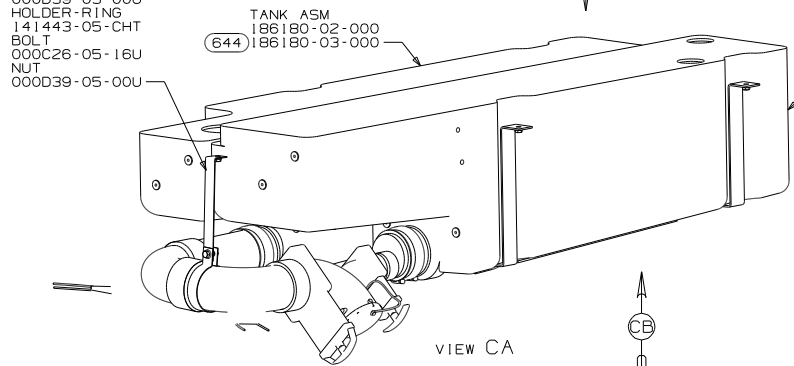
- TANK ASM
186180-02-000
- (644) 186180-03-000

- (11) (10) (23T) PAD-HEATER
133972-05-000 (2)
(INSTALL PER
MFG LABEL)

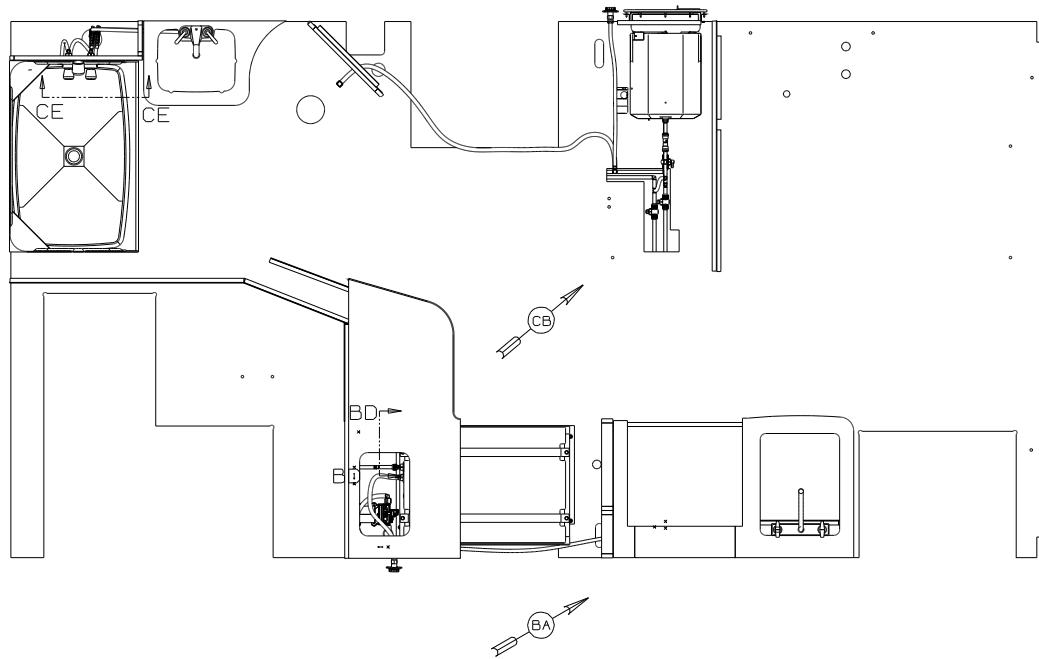
- TANK ASM
186179-02-000
- (644) 186179-03-000



VIEW CB



FIRST USED		14 322R
DO NOT SCALE DRAWING		
TITLE: DRAINAGE SYSTEM INSTL		
SHEET 3	PART NO	185534 REV



10. NOT USED W/ (644)

9. ALL CRIMP FITTINGS TO 3/4" PEX TUBING REQUIRE 3/4" CLAMP 140171-05-000.
8. ALL CRIMP FITTINGS TO 1/2" PEX TUBING REQUIRE 1/2" CLAMP 140171-03-000.
7. ALL CRIMP FITTINGS TO 5/8" FLEX TUBING REQUIRE 5/8" CLAMP 140171-04-000.
6. LABEL HOT AND COLD SUPPLY TUBES AND TAPE FITTING TO TUBE BEFORE CABINET SET TO PREVENT MOVEMENT.
5. ADD PIPE WRAP (LADDER SCRAP 110157-02-000) INSULATION.
4. ADD TEFLON TAPE 010405-01-000.
3. ALL TUBING TO BE SECURED AT 1200 INTERVALS MAXIMUM WITH CLAMP 010495-01-000 AND SCREW 00067-10-12U OR EQUIVALENT.
2. TUBING TO BE INSTALLED WITH SUFFICIENT SLOPE TO PROVIDE DRAINAGE TO NEAREST VALVE.
1. PLASTIC FITTINGS TO BE SEALED WITH SEALANT 084456-01-000.

(644) GREAT ALASKAN RENTAL PACKAGE

WINNEBAGO COPYRIGHT 2014 WINNEBAGO INDUSTRIES, INC.	
DTR	ORIG. DATE
CHR	ALL DIMENSIONS ARE IN MILLIMETERS
P.E.	FIRST USED
W.E.	14 322R
DWR	
UNSPECIFIED TOLERANCES ARE:	MATERIAL
HOLES (Ø) (X) :	3
ONE-PLACE (X, X) :	1
TWO-PLACE (X, X) :	1
ANGLE :	1
THIRD ANGLE PROJECTION	
DO NOT SCALE DRAWING	REFER TO 550016 FOR FASTENER TIGHTENING GUIDELINES
TITLE: WATER SYSTEM INSTL	
SHEET 1 of 3	PART NO 185537 REV
REF: 184035K 1	

(X-X)
FOR WATER CALLOUTS SEE DWG NO 116230-01-000

WATER HEATER INSTL
186599-04-000
PLATFORM ASM
184166-01-000

10 FAUCET-LAV
186417-01-CHT
644 165730-01-CHT

FILL-CITY WATER
167984-01-CHT
SCREW
000667-10-12U(3)
(CITY CONNECTION)

PANEL-SHOWER FAUCET
167798-02-CHT
SCREW
000611-08-12U (4)
COVER
166569-01-CHT (4)
NUT-SPEED
040921-05-000 (2)

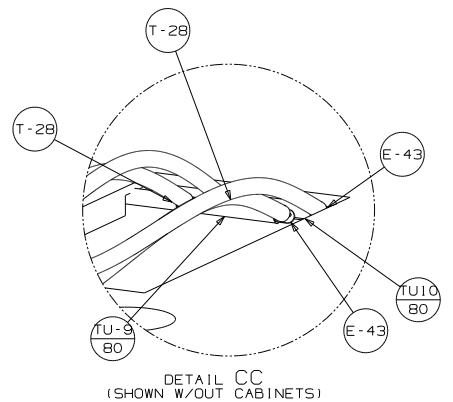
F-2

SECTION CE-CE

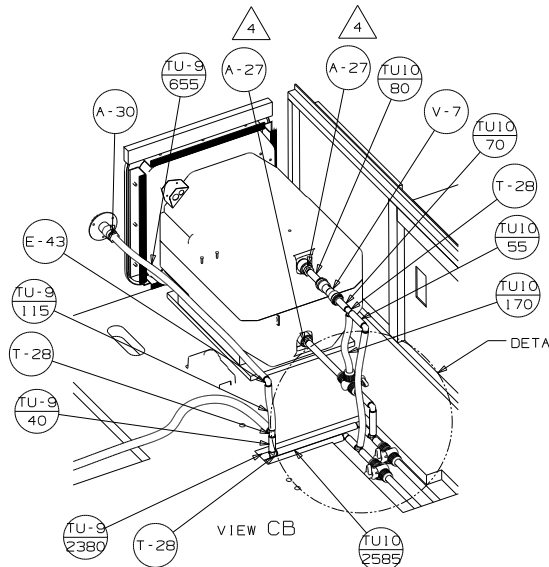
626

DETAIL CC

VIEW CA

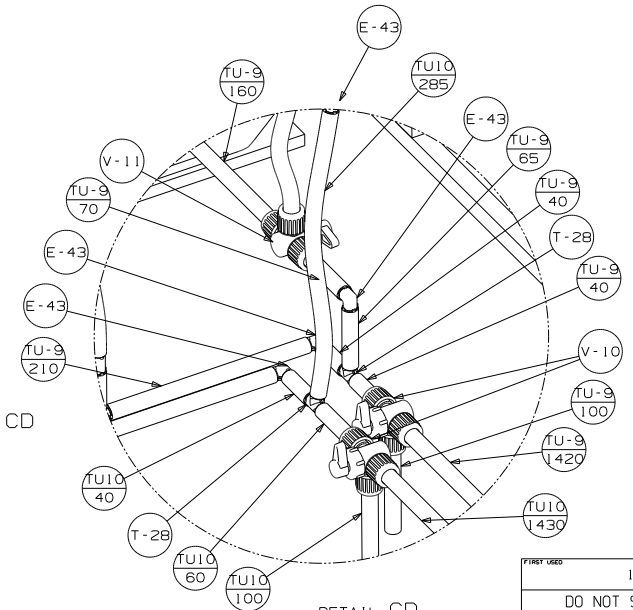


DETAIL CC
(SHOWN W/OUT CABINETS)



VIEW CB

DETAIL CD



DETAIL CD
(SHOWN W/OUT CABINETS)

FIRST USES		14 322R
DO NOT SCALE DRAWING		
TITLE: WATER SYSTEM INSTL		
SHEET 3	PART NO	185537 REV